

Chronic Corticosterone Exposure during Adolescence Reduces Impulsive Action but Increases Impulsive Choice and Sensitivity to Yohimbine in Male Sprague-Dawley Rats

Mary M Torregrossa¹, Maylene Xie¹ and Jane R Taylor^{*1,2}

¹Department of Psychiatry, Yale University, New Haven, CT, USA; ²Department of Psychology, Yale University, New Haven, CT, USA

Chronic stress during adolescence is associated with an increased risk for alcoholism and addictive disorders. Addiction is also associated with increased impulsivity, and stress during adolescence could alter cortical circuits responsible for response inhibition. Therefore, the present study determined the effect of chronic exposure to the stress hormone corticosterone (CORT) during adolescence on tests of impulsivity in adulthood and examined possible biochemical mechanisms. Male Sprague-Dawley rats were exposed to CORT by their drinking water during adolescence (post-natal day 30–50). The rats were then tested in adulthood to assess behavior on the 5-choice serial reaction time task (5CSRTT), stop-signal reaction time task (SSRTT), and the delay-discounting task, which differentially assess attention, impulsive action, and impulsive choice. Yohimbine-induced impulsivity on the 5CSRTT and biochemical analysis of the lateral orbital frontal cortex (IOFC) was also assessed owing to the ability of yohimbine to activate the hypothalamic-pituitary-adrenal axis and influence impulsivity. Adolescent CORT-treated rats were found to behave largely like controls on the 5CSRTT, but did show reduced premature responses when the intertrial interval was increased. Nevertheless, the CORT-treated rats tended to have more yohimbine-induced impulsive responses at low doses on this task, which was not found to be due to increased pCREB in the IOFC, but could be related to a higher expression/activity of the AMPA receptor subunit GluR1. Adolescent CORT-treated rats performed more accurately on the SSRTT, but showed greater impulsivity on the delay-discounting task, as indicated by steeper discounting functions. Therefore, adolescent CORT exposure reduced impulsive action but increased impulsive choice, indicating that chronic stress hormone exposure in adolescence can have long-term consequences on behavior.

Neuropsychopharmacology (2012) **37**, 1656–1670; doi:10.1038/npp.2012.111; published online 15 February 2012

Keywords: impulsivity; adolescence; stress; yohimbine; delay discounting; lateral orbital frontal cortex

INTRODUCTION

Adolescence is a critical period for physical, social, and emotional development. Underlying many of these outward signs of development are ongoing changes in brain structure and function. In particular, stress responsive brain regions, including the prefrontal cortex (PFC), limbic system, and hypothalamic-pituitary-adrenal (HPA) axis, undergo significant developmental changes during adolescence (Lewis, 1997; Spear, 2000). In addition, stress and adverse events in adolescence are reported to increase the risk for psychiatric disorders in adulthood (Covault *et al*, 2007; Fox *et al*, 2010; Laucht *et al*, 2009a, b). An individual's propensity to engage in impulsive behavior or make

impulsive choices is also known to contribute to risk for certain psychiatric disorders (eg, addiction/alcoholism) and is characteristic of other psychiatric disorders (eg, attention-deficit hyperactivity disorder) and bipolar disorder (Jentsch and Taylor, 1999; Moeller *et al*, 2001; Swann, 2010; de Wit, 2009). Therefore, exposure to chronic stress in adolescence may influence the development of the PFC, thus altering cognitive control processes, leading to increased impulsivity and risk for developing psychiatric disorders (Andersen and Teicher, 2009; Chambers *et al*, 2003). Although the effects of chronic stress in adult animals have been studied extensively, there have been relatively few studies examining the effects of chronic stress in adolescent animals, particularly on measures of impulsive behavior.

Several laboratories have studied chronic stress in adolescence using a variety of stressors including chronic restraint, social isolation, social defeat, and unpredictable stress. Different types of stress can have very selective consequences on behavioral outcomes, but the types of stressors adolescents encounter can include physical, social, and emotional stress. Therefore, it is convenient to use a

*Correspondence: Dr JR Taylor, Department of Psychiatry, Yale University School of Medicine, Division of Molecular Psychiatry, S307, Connecticut Mental Health Center, Ribicoff Research Laboratories, 34 Park St., New Haven, CT 06508, USA, Tel: +1 203 974 7727, Fax: +1 203 974 7724, E-mail: jane.taylor@yale.edu
Received 16 August 2011; revised 10 January 2012; accepted 11 January 2012

paradigm that mimics aspects of chronic stress stemming from multiple sources. One such model is the chronic corticosterone (CORT) exposure procedure where animals are given CORT via their drinking water, providing a non-invasive means of keeping the primary output hormone of the HPA axis at relatively high circulating levels for many days with predictable, circadian fluctuations (Gourley and Taylor, 2009). Adult animals treated with chronic CORT display a variety of altered behaviors that look very much like chronic exposure to other stressors. These include an increase in depression-like and anhedonic-like behaviors including increased immobility in the forced swim test and a decrease in sucrose preference that can be reversed by antidepressant treatment (Gourley and Taylor, 2009; Gourley *et al*, 2008a, b). These animals also show deficits in extinction of contextual fear, indicating that they may also have a PTSD-like phenotype (Gourley *et al*, 2009). Some effects of juvenile/adolescent stress can also be mimicked by CORT exposure alone (Jacobson-Pick and Richter-Levin, 2010). Interestingly, some of the effects of chronic CORT or stress exposure in adult animals do not appear to occur when the stress takes place during adolescence (Bourke and Neigh, 2011; Jankord *et al*, 2011; Xu *et al*, 2011). For example, male rodents exposed to chronic restraint or unpredictable stress in adolescence do not show reductions in hippocampal neurogenesis, as is observed in adult animals exposed to chronic stress (Barha *et al*, 2011; Toth *et al*, 2008). However, female rodents exposed to chronic stress in either adolescence or adulthood show reductions in neurogenesis (Barha *et al*, 2011). In addition, chronic CORT exposure in both young (adolescent) and older adult monkeys decreases inhibitory control in a PFC-dependent test of behavioral flexibility (Lyons *et al*, 2000). However, these studies were done in female monkeys who might be more sensitive to chronic CORT in adolescence. In addition, the monkeys were treated with CORT throughout testing, and the greatest deficits were seen after a prolonged CORT exposure. Few other studies have examined the effects of adolescent stress on cognitive function or impulsivity. Therefore, the present studies used the chronic CORT model in male adolescent rats, and tested impulsivity and other aspects of cognitive function on three well-established tasks, the 5-choice serial reaction time task (5CSRTT), stop-signal reaction time task (SSRTT), and the delay-discounting task (c.f., Evenden, 1999; Winstanley, 2011). In addition, we assessed the sensitivity of the animals to yohimbine-induced increases in impulsivity as this α 2a-noradrenergic antagonist has been shown to activate the HPA axis and increase impulsivity (Sun *et al*, 2010; Swann *et al*, 2005). Yohimbine primarily antagonizes pre-synaptic 2a receptors, resulting in increased release of norepinephrine, and we hypothesized that noradrenergic activity could be modulated by long-term plasticity induced by chronic exposure to CORT in adolescence. Finally, we also examined whether CORT treatment altered the phosphorylation state of two downstream targets of protein kinase A (PKA): the AMPA receptor GluR1 and the transcription factor CREB in the lateral orbital frontal cortex (IOFC), as a previous study indicated that increased CREB phosphorylation in this region is necessary for yohimbine-induced increases in impulsivity (Sun *et al*, 2010) and this may be mediated through activation of PKA.

MATERIALS AND METHODS

Subjects

Male Sprague-Dawley rats were delivered to our animal facility aged 24–26 days (Charles River, Kingston, NY). The rats were allowed approximately 5 days to acclimate to the facility before CORT treatment was initiated at approximately post-natal day (PND) 30. The rats were housed in pairs for the duration of the experiment on a 12:12-h light-dark cycle in a temperature- and humidity-controlled environment. Rats had *ad libitum* access to food and water except during periods of food restriction described below. All procedures conformed to the policies set forth by the Yale University Institutional Animal Care and Use Committee and the National Institutes of Health Guidelines on the Care and Use of Laboratory Animals.

Chronic Corticosterone Exposure

Beginning at approximately PND 30, rats were divided into two groups. The first group was treated with 4-pregnen-11 β ,21-diol-3,20-dione 21-hemisuccinate, also known as corticosterone hemisuccinate (CORT) (Steraloids, Newport, RI) for 20 days (until approximately PND50), encompassing the majority of rodent adolescence. The rats received a concentration of 50 μ g/ml CORT for the first 14 days of treatment, then the CORT was gradually weaned away by progressively decreasing the concentration to 25 μ g/ml for 3 days, then 12.5 μ g/ml for 3 more days, and finally switching the rats back to normal tap water for the remainder of the experiments (see Figure 1a for experimental timeline). The second group served as a control and continued to receive normal tap water throughout adolescence and adulthood. These animals were weighed and had their bottles weighed and water changed in the same manner as the CORT-treated group. These methods were almost identical to those described previously (Gourley and Taylor, 2009). The adolescent CORT exposure did not cause any significant differences in weight gain or fluid consumption across adolescence or into adulthood (Figures 1b and c).

Behavioral Testing

All rats remained CORT-free during behavioral testing. For all experiments, rats began food restriction 7–10 days after the CORT exposure period had ended at approximately PND 60, which corresponds to early adulthood and allowed time for the HPA axis to recover production of endogenous corticosterone. During food restriction, rats were maintained at 85–90% of their free-feeding weight. The rats were then trained to respond for 45 mg sucrose pellets (Bio-Serv, Frenchtown, NJ) on one of the three behavioral tasks described below. Separate cohorts of animals were used for testing on each task so that there is no confound of prior behavioral testing. All testing was conducted in standard operant chambers (MedAssociates, St. Albans, VT) and behavioral programs were controlled by MedPC software. All boxes were housed in a sound-attenuating chamber and consisted of Plexiglas front and back walls and ceiling and aluminum sidewalls. The 5CSRTT boxes were extra tall and had one rounded sidewall that contained five apertures

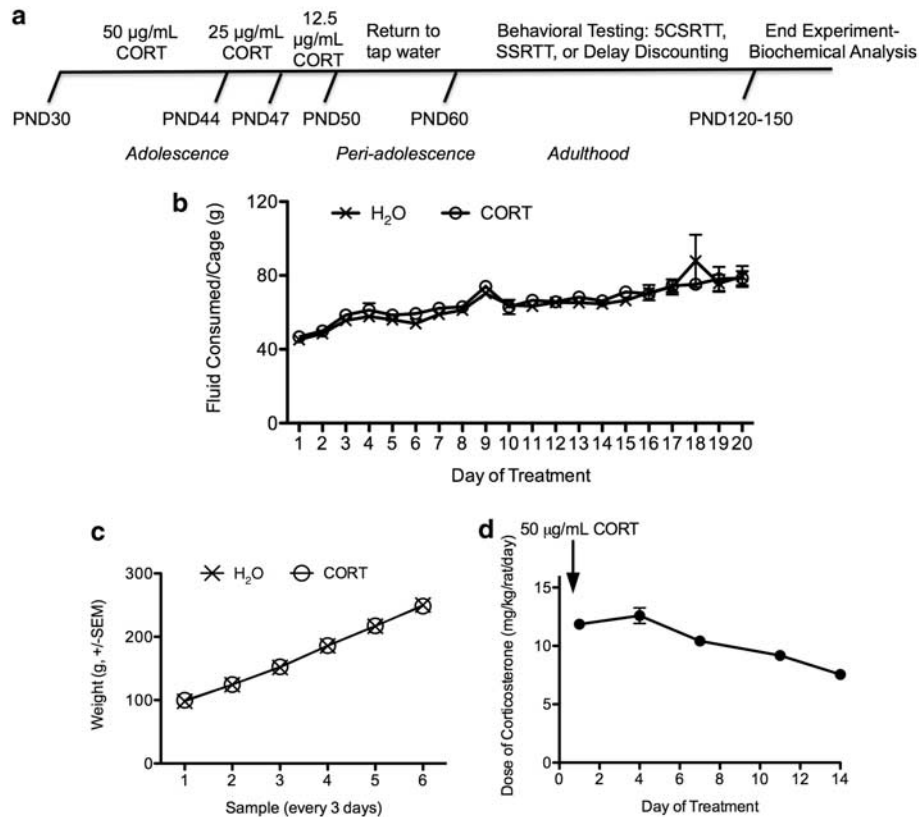


Figure 1 Timeline of experimental events. (a) Male Sprague-Dawley rats were treated with corticosterone via their drinking water during post-natal days (PNDs) 30–50, and all behavioral testing began at PND 60, 10 days after the CORT exposure. There was no corticosterone CORT given during behavioral testing. (b) The CORT-exposed rats drank the same amount of fluid as rats drinking normal tap water throughout the CORT exposure period. (c) CORT-exposed rats did not differ from control rats in the amount of weight gained during the CORT exposure across adolescence. Data are displayed as samples throughout the exposure period. (d) The figure depicts the average dose in mg/kg of CORT that rats consumed on selected days throughout the 50-µg/ml phase of exposure.

equipped with lights and sensors to detect when a rat poked his nose into the aperture to break an infrared light beam. The other sidewall consisted of a central port or magazine where sucrose pellets were delivered. The magazine also contained a light and infrared sensors to monitor magazine entries. The boxes used for the SSRTT and delay-discounting task had a flat sidewall with two, rather than five, nose poke apertures that were not used for the experiments, and the other sidewall contained a magazine as described above, and two retractable levers (one placed on either side of the magazine). All boxes were also equipped with a houselight, tone generator, food dispenser, and fan for ventilation and to produce background noise.

5CSRTT. Rats were trained on the 5CSRTT in a similar manner as previously described methods (Chudasama *et al*, 2003; Jentsch and Taylor, 2003). In brief, rats were trained to make a nosepoke response in a lit nosepoke aperture while ignoring the four unlit apertures. On each trial, one of the five apertures was selected at random by the computer program to be the correct lit aperture.

Initial training. Sessions began with lighting of the magazine. After the rat responded in the magazine, there was a fixed 1 s intertrial interval (ITI) before the lighting of one aperture. During initial training, the aperture remained

lit until the rat responded in one of the apertures. A correct response on the lit aperture resulted in delivery of one sucrose pellet and illumination of the magazine. The rat then had to retrieve the pellet and respond in the magazine again to initiate another trial. An incorrect response in an unlit aperture resulted in a 2-s timeout where the houselight and all other lights were turned off. The timeout ended with illumination of the magazine so that the rat could initiate a new trial. Rats were trained in one 40 min session per day, with no limit on the number of trials that could be completed. Rats were trained until they made the correct response on at least 70% of trials.

Remedial training. A few rats from both the adolescent CORT and control groups required additional training to learn the nosepoke response. These rats were given trials where instead of one nosepoke aperture being lit, all five apertures were lit and a response on any of the five resulted in delivery of a sucrose pellet, turning off of the nosepoke aperture lights and turning on the magazine light. Once these rats were making >100 reinforced nosepoke responses, they were switched back to the initial training program where only one aperture was lit on a given trial. Rats then had to achieve at least 70% accuracy on this phase of training before being moved on to the next phase.

Stimulus duration training. From this point on rats were trained on the same basic program with stimulus durations that were progressively decreased. These sessions lasted for 40 min or until the rat completed 200 trials, whichever came first. These sessions were similar to the initial training described above, except that there was a fixed 2-s ITI between responding in the magazine and lighting of one of the apertures. The aperture was lit for a fixed time (stimulus duration) beginning at 60 s and progressively decreased to 20 s, 5 s, 2 s, and 1 s. Rats could make a correct response by nose-poking in the lit aperture while it was illuminated, or during a 5-s limited hold period immediately following the light being turned off. Again, a correct response resulted in the delivery of one sucrose pellet and lighting of the magazine. A response on an unlit aperture was counted as an incorrect response. Failure to respond on any aperture on a trial was counted as an omission. A response made during the 2-s ITI before lighting of an aperture was counted as a premature or impulsive response. Finally, incorrect responses on an unlit aperture that was the previously correct, reinforced aperture on the immediately preceding trial were counted as perseverative responses. Accuracy was calculated as a ratio of correct responses over the total number of responses (ie, omissions were not included in the calculation of accuracy).

Rats had to achieve at least 70% accuracy at each of the stimulus durations before being moved on to the next shorter stimulus duration. For the longer stimulus durations, this generally only required 1–2 sessions, but at the 1-sec stimulus duration rats were trained for 5 days regardless of the accuracy achieved.

Variable stimulus duration testing: Rats were then tested for attention and vigilance by varying the length of the stimulus duration within a single session. In these sessions, the stimulus duration was chosen at random for each trial and could be 1.6 s, 1.2 s, or 0.8 s. Rats were tested on three daily 40-min sessions with variable stimulus durations.

Long ITI testing: Next, in order to test the propensity of the rats to make premature, impulsive responses, the stimulus duration was kept constant at 2 s but the ITI was varied across sessions. Rats were first returned to their prior training of a 2-s stimulus duration and 2-s ITI for one session to insure that the rats remained highly accurate at these parameters. Rats were then switched to a session where the ITI was fixed at 4 s. The rats had three sessions at a 4-s ITI and were then switched to a 6-s ITI for an additional three sessions.

Yohimbine testing: Previous studies have found that yohimbine increases impulsive responses on the 5CSRTT in rats and humans (Sun *et al*, 2010; Swann *et al*, 2005). Yohimbine is also anxiogenic and activates the HPA axis (Charney *et al*, 1984; Myers *et al*, 2005). Therefore, because the adolescent CORT-treated rats may have differential reactions to a pharmacological stressor, we tested the propensity of yohimbine to increase impulsive responses on the 5CSRTT in these animals. Rats were maintained on a schedule where the ITI was 6 s, but the stimulus duration was reduced to 1 s. Once the rats achieved stable behavior

on this schedule, they were given injections of saline and two doses of yohimbine on different days in random order, 10 min prior to the behavioral testing session. Yohimbine hydrochloride (Sigma-Aldrich, St. Louis, MO) was dissolved in saline at concentrations of 0.625, 1.25, 2.5, and 5 mg/ml. Rats were given intraperitoneal injections of two of these doses on different days in a volume of 1 ml/kg body weight. All rats received a saline injection prior to one day of testing. The doses used have been described previously as being in the behaviorally active range (Sun *et al*, 2010).

SSRTT. A separate cohort of adolescent CORT-treated and control rats were tested on the SSRTT to assess whether adolescent CORT treatment affected impulsive action, or the ability to inhibit a prepotent response. Rats were trained and tested on this task in a manner very similar to previously published methods (Eagle and Robbins, 2003a,b). Briefly, rats were trained to press two levers in order, in quick succession. On these 'go' trials, a correct response on the second lever resulted in receipt of a sucrose pellet reinforcer. On a subset of trials (stop trials) a stop-signal tone was introduced, indicating that the rat had to withhold responding on the second lever in order to receive reinforcement. The time from the second lever becoming available to presentation of the stop signal varied over testing sessions to obtain a measure of how accurately the rats could withhold responding on stop trials as the signal was presented closer to each individual rat's average time to make a go response (mean reaction time (MRT)) on the task.

One-lever training: In order to initiate lever responding in the task, rats were first trained to press a single lever to receive reinforcement. Each session began with illumination of the houselight, delivery of one sucrose pellet, and lighting of the magazine. The rat then had to initiate the first and each subsequent trial by responding in the magazine. Once the rat made a magazine entry the magazine light would go off, and either the left or right lever (counterbalanced across groups) was inserted into the box. A single response on this lever resulted in reinforcement. Each session terminated after 30 min. Once the rats acquired at least 100 reinforcers in a session, they were moved on to the next phase of training.

Two-lever go training: Go training sessions began in the same way as one-lever training, but a response on the first lever resulted in immediate retraction of that lever and insertion of the opposite lever, rather than reinforcement. Once the second lever was inserted, the rats were initially given 10 s to make a response. A single lever press resulted in delivery of a sucrose pellet and illumination of the magazine. Failure to make a response resulted in a 5-sec timeout, where the lever was retracted and the houselight turned off. A new trial began with lighting of the magazine and the houselight. Rats initiated a new trial by making a response in the magazine. The sessions lasted for 30 min or the completion of 200 trials whichever came first. For every session, the average time required for each rat to respond on the second lever after insertion of the second lever was calculated. This value is the MRT. Once rats were reliably responding on the second lever for reinforcement by

completing > 100 trials (usually requiring 1–2 sessions), the time that the second lever was available was reduced to a value 200 ms greater than each rat's MRT. This time was adjusted for each daily session based on the behavior of each rat on the prior day's session. This training was continued until the rats' MRT became fast (0.75–1.8 s) and stable across sessions with completion of at least 70% of trials.

Stop signal training: Once the rats were responding accurately and rapidly on go trials, the stop signal trials were introduced. Stop signal training began with the stop signal presented with zero delay. In other words, at the same time that the second lever was presented, a 2-s tone was initiated that signaled to the animal that he needed to withhold responding on the second lever in order to obtain reinforcement. If the rat responded on the second lever on a stop trial then he was given a 5-s timeout as described above. If the rat successfully withheld a response, then the lever was retracted, a sucrose reinforcer was delivered, and the magazine was lit. Stop trials occurred at random on 20% of trials during a session to maintain accurate go trial responding. There was no difference in the structure of go trials once the stop signal trials were introduced. Rats generally required several days of training to learn to withhold responding on stop trials. Once rats learned to respond with at least 65% accuracy on both stop and go trials, they were moved to the stop signal-testing phase. Only a subset of rats learned to accurately respond on both stop and go trials, so three separate cohorts of adolescent CORT-treated and control rats were tested on the SSRTT in order to obtain sufficient statistical power for analysis.

Stop-signal testing: During stop-signal testing, the time delay between the second lever being presented and the initiation of the stop signal tone was varied across sessions to occur either 800, 600, 400, 200, or 100 ms prior to each rat's own MRT from the previous day. In other words, the stop-signal delay (SSD) for 800 ms was calculated for each individual rat according to the following equation:

$$\text{SSD} = \text{MRT} - 0.800\text{s}$$

Each rat began stop signal testing with a delay set to 800 ms before his MRT to ensure that the rat could maintain accurate stop trial responding when the initiation time of the stop signal was varied. After testing at 800 ms, the SSD was varied across daily sessions in random order from 100–600 ms prior to each rat's MRT. Once rats completed sessions at every SSD, they were re-tested at zero delay to verify that the animals could still accurately respond on both stop and go trials. Any rat that could not maintain > 65% accuracy on go trials at every SSD delay tested was not included in the analysis. Removing these rats from the analysis was necessary because a fraction of rats would change their response strategy at varying delays and elect to stop responding on go trials in order to achieve higher accuracy on stop trials. Inclusion of these animals could have skewed these data toward inappropriately high stop trial accuracy.

Estimation of stop-signal reaction time: We estimated the stop-signal reaction time (ie, the amount of time it takes

for the stopping process to finish after the onset of the stop signal) using the method described by Eagle and Robbins (2003b). The estimated stop-signal reaction time was calculated for each rat at the 800, 600, 400, and 200 ms delays, as these corresponded to the linear portion of the stop function that passed through 50% accuracy. The average of these four values was then calculated for each rat and taken as the strongest estimate of their stop-signal reaction time. These values were then averaged for each group.

Delay Discounting

Finally, another cohort of adolescent CORT-treated and control rats was tested on the delay-discounting task as a measure of impulsive choice. The behavioral paradigm was based on the previously published protocols (Mar and Robbins, 2007; Mar et al, 2011). Briefly, rats were trained to press one lever for delivery of one sucrose pellet and to press the opposite lever for delivery of four sucrose pellets. The delivery of one pellet always occurred immediately after making the lever press, but pressing the lever for four pellets resulted in delivery of the pellets after varying delays. In this manner, the task assesses each animal's willingness to wait for a large reinforcer, rather than choosing a smaller, immediate reinforcer. Rats were first trained to lever press for reinforcement in general and to become accustomed to long ITIs before introducing delays.

Lever press training: In the initial phase of training, each session began with lighting of the houselight and the magazine light. The rat had to respond in the magazine to initiate a trial. Once the rat made a magazine response, the magazine light was extinguished and either the left or right lever was inserted into the chamber at random. A single lever press resulted in delivery of one sucrose pellet, retraction of the lever, and illumination of the magazine. Failure to make a lever response within 30 s resulted in retraction of the lever and a 5-s timeout where the houselight was extinguished. On the next trial, the opposite lever was inserted into the magazine and a single response resulted in delivery of one sucrose pellet. The first lever to be inserted on each pair of trials was randomly chosen, but the rats had an equal number of trials where the left or right lever was available. Sessions lasted for 30 min or until 100 trials were completed. Once rats learned to respond on the majority of trials for both the left and right lever, they were moved on to the next phase of training.

Training on increased ITI: The next phase of training was essentially the same as initial lever press training except that a 40-s ITI was introduced at the end of each trial, regardless of whether the rat made a lever response or not. If the rat made a response on the inserted lever then he received a single sucrose pellet, the magazine was lit, and the lever was retracted. After responding in the magazine to consume the pellet, the magazine light and houselight were extinguished for 40 s. At the end of the ITI, the magazine light was turned on and a response initiated a new trial, which began with lighting of the houselight, insertion of one of the two levers, and extinction of the magazine light. If the

rat failed to respond on the lever within 10 s, then the houselight was extinguished and the lever was retracted. After 40 s, the magazine light was lit to signal that a new trial could be initiated. The sessions lasted for 60 min or until 90 trials were completed. Once rats were successfully responding on the majority of trials, they were moved on to the next phase of training.

Lever discrimination and delay-discounting training:

The next phase of training involved training the rats that one lever (always the left or the right, counterbalanced across groups) was associated with immediate delivery of one pellet, whereas the other lever was associated with delivery of four pellets at varying delays. These sessions consisted of five blocks of 12 trials each. Each block of 12 trials represented different delays to delivery of the four pellets if the large reinforcer lever was chosen. Each successive block of trials used a progressively increasing delay for delivery of the four pellets in the following order: 0 s, 10 s, 20 s, 40 s, and 60 s. The rat had to make a response in the magazine to begin each trial as before. Each block of trials began with two forced-choice trials where either the left or right lever only was inserted on the first of these two trials, chosen at random, and the opposite lever was inserted on the next forced-choice trial. A response on the inserted lever resulted in reinforcement under the conditions for that block of trials for that lever. In other words, if the left lever was paired with immediate delivery of one pellet, then pressing the left resulted in this outcome. On the next forced-choice trial, only the right lever would be available and a response on this lever would result in four pellets delivered after the delay that was operating during that block of trials. The next 10 trials in the block were free-choice trials where on each trial both levers were inserted into the chamber and the rat could choose to respond on either lever, with the left always giving immediate reinforcement of one pellet and the right always giving four pellets after the set delay. For all trials, rats had 10 s to initiate a trial after the magazine was lit, otherwise the light was extinguished and a new ITI began. The number of missed trials was recorded as an estimate of attention and motivation to perform the task. Likewise, rats were given 10 s to respond on a lever on each trial, or the lever was retracted, the houselight was extinguished, and a new ITI began. Lever omissions were also recorded. During this phase of the experiment, the ITI was set at 90 s. The session continued until all 60 potential trials were completed (roughly 110 min). Successful training in the task was indicated by rats efficiently discriminating between the levers associated with small and large reinforcement with 0 s delay. Rats that understand the task should preferentially choose the large reinforcer when there is no delay to reinforcer delivery. Rats demonstrating a side bias (ie, always choosing the left lever regardless of reward magnitude or delay) were switched to the opposite lever-reinforcer size contingency, and if the rats still did not adjust their behavior then they were excluded from the analysis.

Short delay testing: After the rats reached stable behavior for several days at these delays (16 total sessions), they were switched to a series of shorter delays as follows: 0 s, 3 s, 6 s,

10 s, and 15 s, in order to assess whether rats would choose the larger reinforcer more frequently if there was a shorter delay. All other aspects of the task remained exactly as described above. Rats were maintained on this version of the task for 10 sessions.

Biochemical Studies

The methods used for biochemical analysis were similar to those previously published in our laboratory (Gourley *et al*, 2009). At the end of behavioral testing on the 5CSRTT, rats were killed by rapid decapitation and the brains were rapidly dissected and frozen on dry ice. Brains were stored at -80°C until dissection by cutting frozen brains into 2 mm slices using a metal brain mold (Plastics One, Roanoke, VA). Specific brain regions were then obtained from the slices using a tissue punch (1.2 mm diameter, Fine Science Tools, Foster City, CA) including the lateral region of the IOFC. The tissue punches were stored at -80°C until the tissue could be homogenized using a sonicator in a buffer containing 1.37 mM NaCl, 20 mM TrisHCl, 1% Igepal, 10% glycerol, and 1:100 phosphatase inhibitor cocktails I and II (Sigma-Aldrich). Protein concentrations in each sample were then quantified using the Pierce bicinchoninic acid assay kit (ThermoScientific, Rockford, IL). For immunoblotting, 10 μg of protein from each sample was diluted 4:1 in 1% SDS and loading buffer containing 20% glycerol, 2% SDS, and bromophenol blue, and the samples were then boiled for 10 min. Samples were loaded onto 10–20% Tris-glycine gradient gels (Invitrogen, Carlsbad, CA) and proteins were separated using electrophoresis. Proteins were then transferred to nitrocellulose membranes and incubated in the following primary antibodies: anti-phospho Ser133 CREB (Rb, 1:1000, Sigma-Aldrich, St. Louis, MO), anti-CREB (Rb, 1:1000, Sigma), anti-phospho Ser845 GluR1 (Rb, 1:1000, Phosphosolutions, Aurora, CO), anti-GluR1 (Rb, 1:500, Millipore, Billerica, MA), and anti-GAPDH (Ms, 1:10,000, Advanced Immunochemicals, Long Beach, CA). Immunoblots were incubated in the following secondary antibodies for analysis on the LI-COR Odyssey Imager: IRDye700 Dx Anti-Rb IgG and IRDye800 Dx Anti-Ms IgG (1:5000, Rockland Immunochemicals, Gilbertsville, PA). Protein bands were identified and analyzed using Licor-Odyssey software. The expression of each protein was normalized to GAPDH expression for that sample, and for each gel, bands were further normalized to the average of the H_2O -treated group to control for between gel variations.

Statistical Analysis

For the majority of the statistical analysis, a repeated-measures (rm) ANOVA was used where the between-subjects factor was adolescent CORT or H_2O treatment whereas the within-subjects factor was stimulus duration, ITI, yohimbine dose, SSD, or delay to larger reinforcer, as appropriate for each test. Significance was set at α of 0.05, and any significant interaction effects were further analyzed by Bonferroni's *post hoc* test. Western blot data were quantified and analyzed by an unpaired, *t*-test with α set to 0.05.

RESULTS

Corticosterone Exposure

Data from all experiments was combined to analyze whether CORT exposure affected fluid consumption or weight gain across adolescence. These data were combined because there were no significant differences between the different cohorts of animals. During the entire CORT exposure period, each cage of rats consumed the same amount of fluid whether they were drinking CORT-containing water or regular tap water, as indicated by no significant effect of solution or interaction when analyzed by rmANOVA ($p=0.24$; $p=0.95$, respectively). There was a significant effect of day indicating that as the animals grew, their total fluid consumption also increased ($F_{(1,19)}=13.52$, $p<0.001$; Figure 1b). Likewise, weight was sampled across the CORT exposure period and Figure 1c indicates that CORT had no significant effect on adolescent weight gain ($p=0.79$), but that weight significantly increased over time ($p<0.001$). Figure 1d illustrates the total dose of CORT in mg/kg per rat per day consumed at days sampled during the 50 $\mu\text{g}/\text{ml}$ phase of CORT exposure, indicating that the level of CORT the rats were exposed to ranged from approximately 12.5–7.5 mg/kg across days and decreased in direct relation to their increase in weight. The total dose at the end of the exposure period is similar to that previously reported for adult rats, and that maintains high levels of circulating CORT (Gourley and Taylor, 2009; Gourley *et al*, 2008a).

5CSRTT—Stimulus Duration Testing

Eight adolescent CORT-treated and eight H₂O-treated control rats were trained on the 5CSRTT beginning 10 days after the cessation of CORT treatment and PND60 (Figure 1a). Rats acquired accurate responding on the task at roughly the same rate, with 7/8 CORT rats and 6/8 H₂O rats responding with >70% accuracy at the 5-s stimulus duration on the 10th total day of training (all phases). The H₂O control rats required 3 and 5 days, respectively, of

additional training to reach the same criteria, and the CORT rat required four additional days of training. From that point on all rats progressed at about the same rate, indicating that prior adolescent CORT treatment did not produce a difference in ability to learn the task.

Figure 2 illustrates the results of varying the stimulus duration on accuracy, omissions, premature, and perseverative responses when rats were tested at stable stimulus durations of 5, 2, or 1 s each session, and accuracy when rats were tested at variable stimulus durations (1.6, 1.2, and 0.8 s). A rmANOVA of accuracy across stimulus durations revealed a main effect of stimulus duration ($F_{(2,28)}=57.31$, $p<0.001$), but no significant effect of treatment ($p=0.51$) or interaction ($p=0.89$), indicating that although all rats showed reduced accuracy as the stimulus duration decreased and attentional demands increased, there was no effect of adolescent CORT treatment (Figure 2a). Likewise, when rats were tested at variable stimulus durations within a session, analysis of accuracy by rmANOVA revealed a main effect of stimulus duration ($F_{(2,28)}=7.63$, $p=0.002$), but no effect of treatment ($p=0.48$) or interaction ($p=0.81$). Again, these data indicated that although decreasing the stimulus duration does decrease accuracy as expected, there is no effect of adolescent CORT treatment on performance in the task (Figure 2b).

Analysis of premature responses again indicated a main effect of stimulus duration ($F_{(2,28)}=9.96$, $p=0.005$), and although there was no significant effect of treatment ($F_{(1,28)}=2.79$, $p=0.12$), or interaction ($F_{(2,28)}=2.65$, $p=0.09$); there was a strong trend toward adolescent CORT treatment reducing premature responses, particularly at the 1-s stimulus duration (Figure 2c). Analysis of omissions and perseverative responses revealed a main effect of stimulus duration ($F_{(2,28)}=7.18$, $p=0.003$; $F_{(2,28)}=18.08$, $p<0.001$), but no effect of treatment ($p=0.63$; $p=0.43$) or interaction ($p=0.68$; $p=0.41$), respectively, for each measure (Figures 2d and e). Finally, there were no differences between CORT-treated and control rats on their latency to make a response or initiate new trials (data not shown).

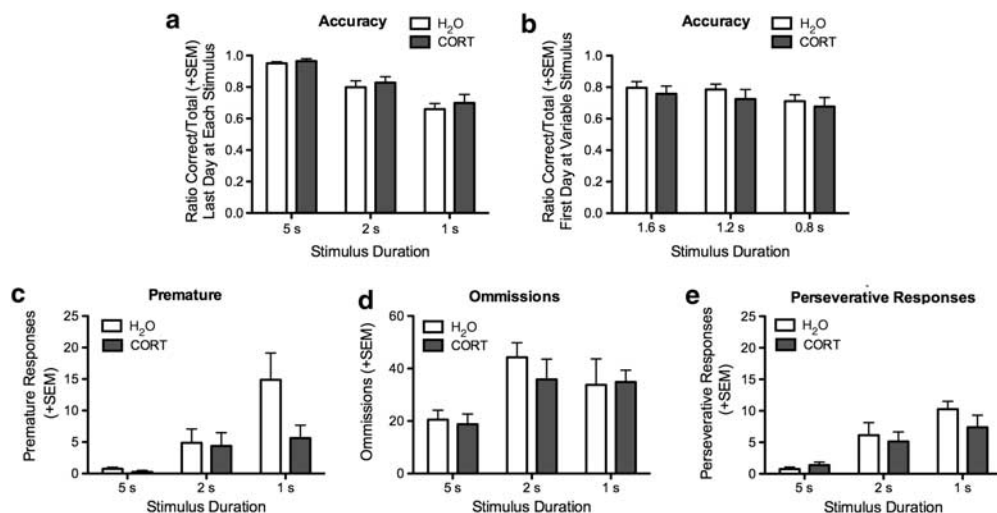


Figure 2 Effects of chronic adolescent corticosterone (CORT) on baseline behaviors in the 5-choice serial reaction time task (5CSRTT). Chronic adolescent CORT had no significant effects on task accuracy at stable stimulus durations (a) or variable stimulus durations (b), though all rats showed decrements in performance as stimulus duration decreased. Chronic adolescent CORT also produced no significant differences in other measures of task performance including premature responses at a stable intertrial interval (ITI) (c), trial omissions (d), or perseverative responses (e).

5CSRTT—ITI Testing

In order to determine whether there might be a real difference in premature or impulsive responding between the adolescent CORT-treated and control-treated rats, we next tested the animals at increasing ITIs. The rats were first returned to a stable stimulus duration of 2 s and an ITI of 2 s, for which they had been well trained. Then, on the next daily session, the rats were switched to an ITI of 4 s, which forced the animals to wait longer than they were accustomed to find out which nose-poke port was the correct one to make a response for reinforcement. Increasing the ITI is known to produce an increase in premature responses (Chudasama *et al.*, 2003). The rats were kept at a 4-s ITI for a total of three sessions, and then it was increased again to 6 s to again force the animals to wait longer than they were accustomed to make an accurate response. Figure 3 illustrates the performance of rats on the re-baseline day at a 2-sec stimulus duration and 2 s ITI, followed by performance on the first day the animals were switched to a 4-s ITI and the first day they were switched to a 6-s ITI. All rats improved their accuracy and decreased premature responding after multiple days of training on a new ITI, so these data reflect the ability of the rats to adjust to novel changes in task demands. As expected, rmANOVA revealed a main effect of ITI on accuracy in the task ($F_{(2,28)} = 261.8$, $p < 0.001$), as the rats made many more premature responses and often missed the stimulus light. There was a strong trend for a main effect of adolescent CORT treatment ($F_{(1,28)} = 4.13$, $p = 0.061$) on accuracy in the task, but there was no significant interaction ($p = 0.30$). However, when accuracy at the 2-s ITI was removed from analysis in order to specifically assess differences in accuracy in the face of changing task demands, as opposed to baseline behavior that had been well-trained, we found a significant effect of adolescent CORT treatment ($F_{(1,14)} = 5.43$, $p = 0.035$), but no significant interaction,

indicating that although at baseline adolescent CORT treatment did not affect accuracy, prior CORT treatment does result in a slight improvement in performance in the face of novel task demands (Figure 3a).

The adolescent CORT treatment also improved performance in the task in terms of reducing impulsive, premature responses. Figure 3b illustrates that there was a significant main effect of prior CORT on the number of premature responses ($F_{(1,28)} = 7.62$, $p = 0.015$), as well as a main effect of ITI ($F_{(2,28)} = 96.84$, $p < 0.001$), but no significant interaction, though there was a strong trend ($p = 0.068$). The effect of adolescent CORT treatment was also significant when the 2-s stimulus duration was excluded from analysis. Therefore, adolescent CORT treatment reduced the tendency of rats to respond prematurely in response to increases in the ITI. Analysis of omissions revealed a significant effect of ITI ($F_{(2,28)} = 12.20$, $p = 0.002$), but no significant effect of treatment ($p = 0.17$) or interaction ($p = 0.86$; Figure 3c). Likewise, although there was a significant effect of ITI on perseverative responses ($F_{(2,28)} = 5.61$, $p = 0.009$), there was no effect of treatment ($p = 0.80$) or interaction ($p = 0.67$). Although in general, increasing the ITI worsens performance on the task, increasing the ITI actually decreases perseverative responses. This was likely due to the fewer correct responses that the rats made overall, and possibly because of an inability of the rats to maintain in working memory the identity of the previously reinforced aperture over longer delays. Regardless, prior adolescent CORT treatment did not significantly affect perseverative responding at changing ITIs (Figure 3d).

5CSRTT—Yohimbine Dose-Response Curve

The α -2-noradrenergic receptor antagonist yohimbine has been shown to increase impulsive responding on the

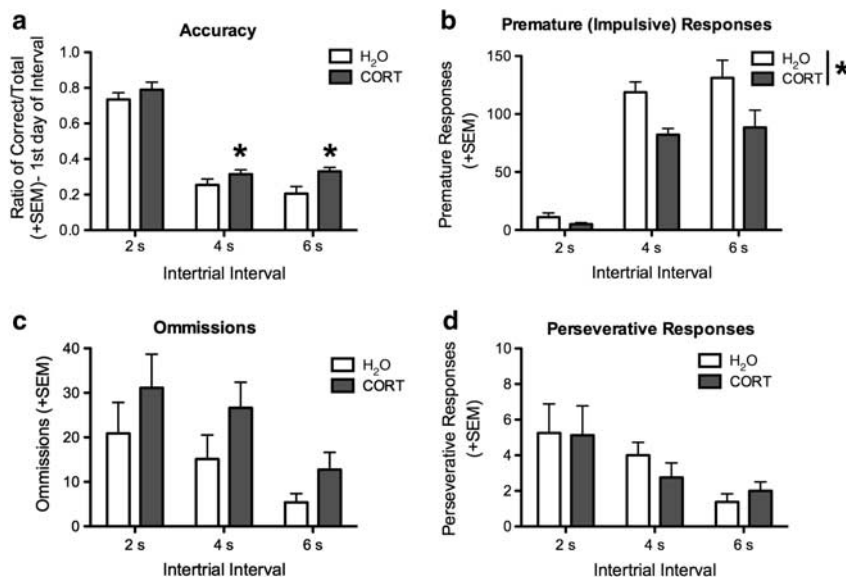


Figure 3 Chronic adolescent corticosterone (CORT) decreases impulsivity with changing intertrial intervals (ITIs) on the 5-choice serial reaction time task (5CSRTT). Chronic adolescent CORT improved task accuracy when the ITI was switched to both 4 and 6 s (a), and produced an overall reduction in premature responses on the first day that the ITI was switched (b). The adolescent CORT-treated rats showed no significant differences in omissions (c) or perseverative responses (d) as the ITI increased. * $p < 0.05$.

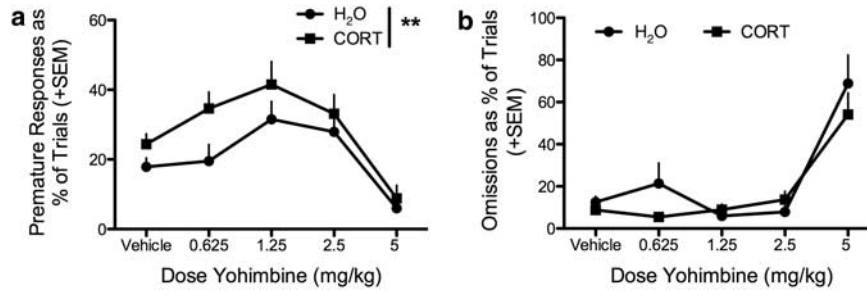


Figure 4 Chronic adolescent corticosterone (CORT) treatment enhances sensitivity to yohimbine-induced impulsivity on the 5-choice serial reaction time task (5CSRTT). Adolescent CORT-treated and control rats were given injections of saline and varying doses of yohimbine prior to testing on the 5CSRTT with a stable intertrial interval (ITI) and stimulus duration. Adolescent CORT-treated rats had an upward and leftward shift in the yohimbine dose–response curve, indicative of a greater sensitivity to yohimbine’s effects on impulsivity (a), whereas the number of omissions on the task was not different between groups and was not significantly disrupted except at the highest dose of yohimbine (b). $**p < 0.01$.

5CSRTT in rats and humans (Sun *et al*, 2010; Swann *et al*, 2005), and because chronic CORT exposure during adolescence could alter brain responsiveness to noradrenergic stimulation and other stressors in adulthood, we examined the effect of yohimbine at several doses on behavior in the 5CSRTT. Figure 4 illustrates the effects of yohimbine on premature responses and omissions as a percentage of trials initiated. Yohimbine, particularly at the highest dose, altered the number of trials the rats would actually initiate, as opposed to data presented above, where all rats initiated close to all possible trials. Analysis of the percent of trials resulting in a premature response by ANOVA revealed a main effect of dose ($F_{(4,86)} = 11.67$, $p < 0.001$) and a main effect of adolescent CORT treatment ($F_{(1,86)} = 8.18$, $p = 0.005$), but no interaction ($p = 0.70$). The lower doses of yohimbine increased premature responding in all animals, but the CORT-treated animals showed a greater amount of impulsive responding, as indicated by the main effect of CORT (Figure 4a). Both groups of animals showed a great reduction in impulsivity at the 5-mg/kg dose, and this was largely because of an overall disruption in behavior in the task. For example, analysis of omissions revealed a main effect of dose ($F_{(4,86)} = 28.67$, $p < 0.001$), but no effect of treatment ($p = 0.17$) or interaction ($p = 0.27$), illustrating that the 5-mg/kg dose greatly increased omissions in the task in both groups, whereas the other doses of yohimbine had relatively little impact on completion of trials in the task (Figure 4b). Similarly, accuracy was not altered by yohimbine when compared with a vehicle injection except at the 5-mg/kg dose where accuracy decreased. In addition, perseverative responses increased at the 5-mg/kg dose, but only in the subset of animals of both treatment groups that made any perseverative responses at all at that dose (data not shown).

5CSRTT—Biochemical Analysis

A study by Sun *et al* (2010) found that the yohimbine-induced increase in impulsivity on the 5CSRTT was associated with an acute increase in phosphorylation of CREB in the IOFC, and that inactivation of CREB could prevent yohimbine-induced increase in impulsivity. Therefore, we examined whether baseline differences in phospho-CREB in the adolescent CORT-treated rats could explain the observed differences in impulsivity, either in response to changing ITI’s or to yohimbine administration. We also

examined the expression of the phosphorylated form of the AMPA receptor subunit GluR1 at serine 845, as this is also a target of cAMP-dependent PKA. We analyzed protein expression using eight rats per group. Analysis of phospho- and total CREB expression, and the ratio of phospho- to total CREB revealed no significant differences between the adolescent CORT-treated and control animals ($p = 0.36$, 0.27 , and 0.49 , respectively; Figure 5a). However, analysis of phospho-GluR1 expression revealed a significant increase in the adolescent CORT-treated rats over controls ($p = 0.028$). Although there was no significant increase in the expression of total GluR1, there was a trend ($p = 0.087$), and because there was no significant difference in the ratio of phospho- to total GluR1 expression ($p = 0.484$), it is likely that the increase in phospho-GluR1 represents an overall increase in GluR1 in the IOFC after adolescent CORT treatment that is maintained in the more active, phosphorylated state (Figure 5b). An increase in active GluR1 could represent a mechanism by which adolescent CORT-treated rats are more sensitive to yohimbine-induced impulsivity.

SSRTT

The reduction in premature responses at increasing ITIs produced by adolescent CORT exposure on the 5CSRTT could be interpreted as an improved ability to wait for the stimulus light to appear, or as an improved ability to inhibit ongoing responses. In order to tease apart these two possibilities additional rats were tested on the SSRTT, which gives an estimate of the ability to inhibit prepotent responding, and the delay-discounting task, which assesses willingness to wait for larger reinforcement. First, a separate cohort of rats were treated with CORT or maintained on regular H₂O during adolescence. Beginning 10 days after the end of CORT exposure (PND60), rats were trained to perform the SSRTT. Overall, a lower percentage of rats successfully reached the learning criteria of this task (ie, $> 65\%$ accuracy on go trials and stop trials with zero delay); therefore, a total of 24 H₂O and 24 CORT rats were trained on the task in order to have final group sizes of 15 H₂O and 11 CORT-treated animals, which allowed sufficient power for statistical analysis.

Figure 6 illustrates the behavior of the rats that did successfully learn the task. A rmANOVA of accuracy on stop trials across the varying SSDs indicated a main effect of treatment ($F_{(1,96)} = 4.45$, $p = 0.045$), illustrating that the

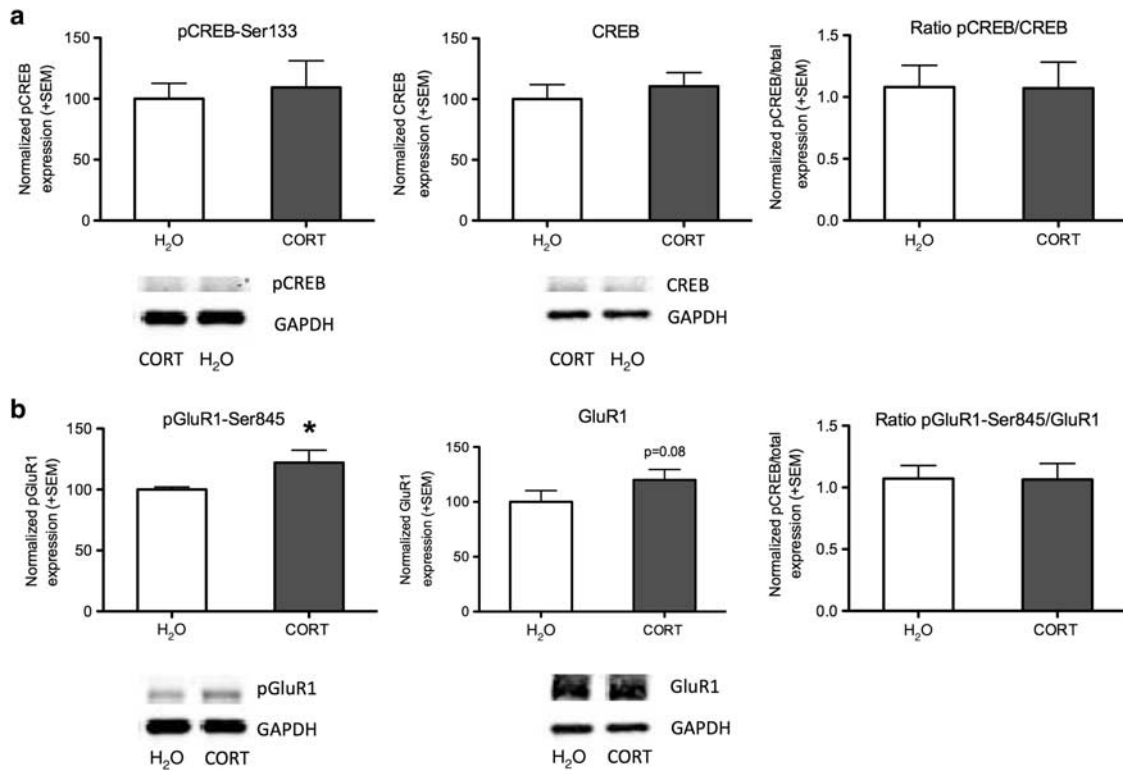


Figure 5 Chronic adolescent corticosterone (CORT) treatment does not alter expression of CREB, but increases phosphorylated GluR1 in the lateral orbital frontal cortex (IOFC). Phosphorylation of CREB in the IOFC is associated with yohimbine-induced impulsivity on the 5-choice serial reaction time task (5CSRTT) (Sun et al, 2010), but adolescent CORT treatment did not alter the expression of phospho-CREB at ser133, total CREB, or the ratio of phospho-total CREB in the IOFC (a). Adolescent CORT treatment did significantly increase phosphorylation of the AMPA receptor subunit GluR1 at the protein kinase A (PKA) site ser845, with a trend toward increasing overall GluR1 expression, $p = 0.08$. However, the ratio of phosphorylated to total GluR1 was not different, indicating a likely overall increase in protein expression that is maintained in the phosphorylated state (b). All bands were normalized to GAPDH and representative blots are below the graphical quantification, $*p < 0.05$.

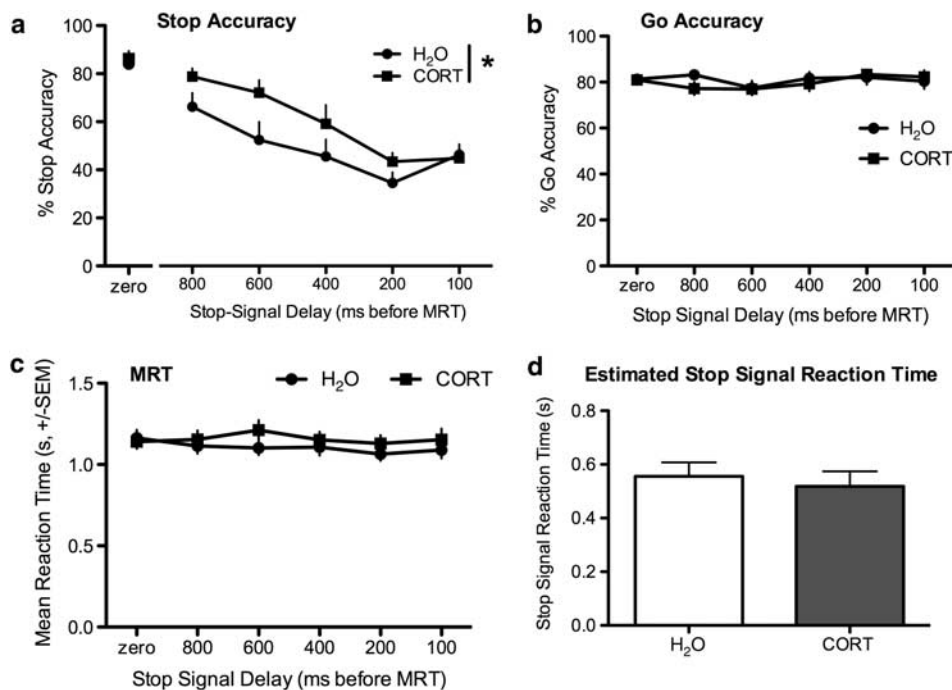


Figure 6 Chronic adolescent corticosterone (CORT) improves accuracy on the SSRTT. Adolescent CORT-treated rats demonstrated better stop accuracy across increasing stop signal delays (SSDs), but were not different from controls at baseline stop accuracy with zero delay (a). Adolescent CORT treatment did not affect accuracy on go trials at any SSD (b). CORT treatment did not affect the mean reaction time (MRT) on go trials at any delay (c). CORT treatment did not significantly alter the estimated stop-signal reaction time (d), $*p < 0.05$.

adolescent CORT-treated rats were actually more accurate at withholding responses on stop trials across the SSDs compared with the H₂O-treated controls. There was also a main effect of SSD as expected, with all animals performing less accurately on stop trials as the delay was increased and got closer to each animal's mean go reaction time ($F_{(4,96)} = 17.03$, $p < 0.001$), and there was no significant interaction ($p = 0.26$), indicating that the CORT-treated animals were more accurate overall, rather than at any specific SSD (Figure 6a). There was no significant difference between the CORT and H₂O groups on stop accuracy at zero delay to the stop signal using an unpaired *t* test ($p = 0.68$), indicating that there was no innate difference in ability to withhold responding on stop trials when task demand was low. The difference produced by adolescent CORT treatment only was manifested as the difficulty of the task increased (Figure 6a). Likewise, analysis of accuracy on go trials across all of the SSDs by rmANOVA revealed no effect of delay ($p = 0.14$), treatment ($p = 0.99$), or interaction ($p = 0.40$), indicating that neither adolescent CORT treatment or varying the SSD altered the ability of rats to accurately respond on go trials in the task (Figure 6b). Analysis of the mean go reaction times across SSDs indicated that there was no significant effect of treatment ($p = 0.47$), suggesting that CORT's effects on stop accuracy were not because of overall slowing of responses (Figure 6c). In addition, analysis of the estimated stop-signal reaction time by a one-tailed *t*-test indicated no significant difference between groups in stop-signal reaction time ($p = 0.32$; Figure 6d).

Delay-Discounting Task

Although the results of the SSRTT indicate that adolescent CORT exposure reduced impulsive action, they do not address whether adolescent CORT exposure affects impulsive choice/decision making. Therefore, we tested a novel cohort of rats on the delay-discounting task, a procedure that requires animals to choose between immediate, small reinforcement and delayed, larger reinforcement to assess impulsive decision-making ability. A group of eight adolescent CORT-treated and eight H₂O-treated control rats were initially trained on the task. One CORT-treated rat and one H₂O-treated rat developed a lever bias, such that they responded on the same lever (left or right), regardless of whether it was associated with immediate or delayed reinforcement. These animals were excluded from data analysis, so that the final group sizes were seven adolescent CORT-treated and seven adolescent H₂O-treated. Rats were initially trained at delays to reinforcement ranging from 0–60 s. Both groups required approximately 12 sessions of training to reach stable choice responding at these delays. The rats continued on this schedule for four additional sessions to insure behavioral stability. Figure 7 illustrates the discounting functions for both groups as percent choice of the large, delayed reinforcer across the various delays. The function is based on the average percent choice of the larger reinforcer from the last 3 days of training for each rat at each delay, which is how delay-discounting data has been reported in previous studies (Mar and Robbins, 2007). Figure 7a illustrates responding early in training before rats show a strong

preference for the larger reinforcer at zero delay. There was no significant effect of treatment early in training ($p = 0.27$). After stable responding was established, analysis by ANOVA revealed a significant effect of delay ($F_{(4,60)} = 106.6$, $p < 0.001$), indicating that as the delay to reinforcement got longer, all rats switched preference to the small, immediate reinforcer, but there was no effect of treatment ($p = 0.14$) or significant interaction ($p = 0.44$, Figure 7b).

Owing to the very steep discounting functions observed at these delays, with rats only choosing the large reinforcer at the shortest delay of 10 s 20–30% of the time, we decided to test shorter delays ranging from 3–15 s to see whether group differences could be observed when rats did not have to wait so long for the larger reinforcer. A statistical difference in choice behavior between the groups was observed after 5 days of training at the new delays, with a significant main effect of both treatment ($F_{(1,60)} = 12.46$, $p < 0.001$) and delay ($F_{(4,60)} = 29.40$, $p < 0.001$), with both groups preferring the large reinforcer over 80% of the time with zero delay, but with the CORT-treated group choosing the larger reinforcer significantly less frequently if there was any delay to reinforcement (Figure 7c). The rats were trained for an additional five sessions and the statistical difference between groups was maintained. The discounting functions based on the last 3 days of training at the shorter delays are illustrated in Figure 7d. Again, there was a main effect of treatment ($F_{(1,60)} = 5.40$, $p = 0.024$) and delay ($F_{(4,60)} = 31.79$, $p < 0.001$), but no significant interaction effect ($p = 0.86$), indicating that the adolescent CORT-treated rats made significantly more impulsive choices at all of the delays to large reinforcement. No consistent significant differences were found between groups on any other measures on the task, including reaction time to choose a lever or initiate a trial, or on trial omissions (data not shown).

DISCUSSION

Chronic CORT exposure specifically during adolescence produces enduring changes in the expression of impulsive behaviors well into adulthood, long after the cessation of CORT treatment. Interestingly, adolescent CORT exposure resulted in bidirectional effects on impulsivity depending on the dimension of impulsive behavior analyzed. Adolescent CORT-treated rats were less impulsive on measures of impulsive action. In particular, these rats were better able to inhibit a prepotent response on the SSRTT. Similarly, adolescent CORT-treated rats were less impulsive at increasing ITIs on the 5CSRTT, suggesting that the treatment either increased their ability to inhibit an ongoing response or wait for the response signal. The results of the SSRTT strongly suggest that adolescent CORT treatment increases the ability to inhibit responding. To provide further support for this conclusion, we also tested adolescent CORT-treated rats on the delay-discounting task, which assesses impulsive choice or the ability to wait for a bigger reward. Unlike the results from the 5CSRTT and SSRTT, the adolescent CORT treatment markedly increased impulsive choice, with the CORT-treated animals selecting the immediate, small reinforcer at a greater frequency than the larger reinforcer even at a very short 3 s delay. Therefore, adolescent CORT treatment appears to increase

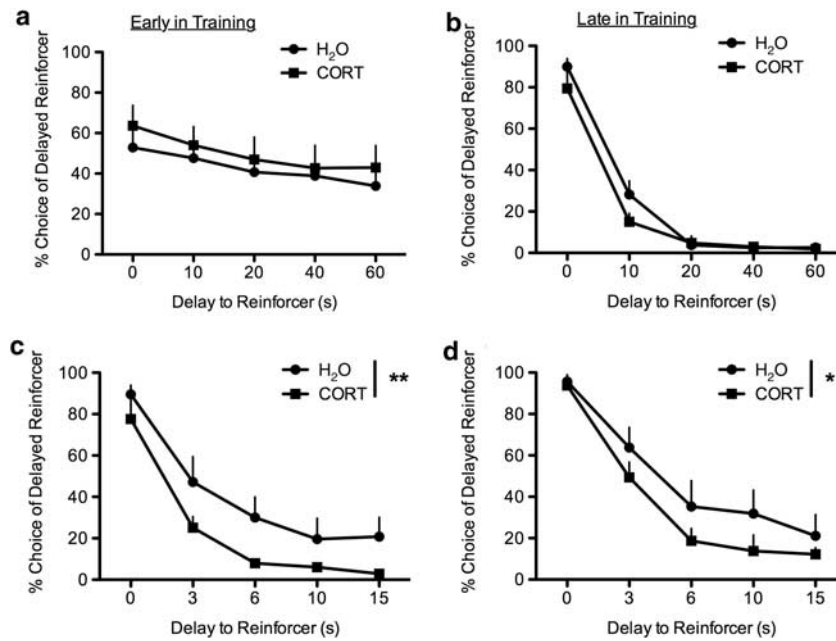


Figure 7 Chronic adolescent corticosterone (CORT) increases impulsive choice on the delay-discounting task. When the range of delays to the larger reinforcer were long (maximum 60 s), there was no significant difference between adolescent CORT-treated and control rats on the discounting function either early (a) or late (b) in training. However, when the range of delays to large reinforcement were short (maximum 15 s), adolescent CORT treatment caused steeper discounting functions both early (c) and late (d) in training at the new delays, indicating an increased impulsive choice, * $p < 0.05$, ** $p < 0.01$.

impulsive choice while simultaneously being able to decrease impulsive action.

Notably, yohimbine caused the adolescent CORT-treated animals to make more impulsive responses on the 5CSRTT. When tested under conditions of the yohimbine challenge, the animals were not asked to adjust their behavior on the basis of a changing ITI, and thus, the yohimbine effect may reflect a decrease in the ability to wait for the stimulus before making a response—conditions under which the adolescent CORT-treated animals were particularly sensitive. In addition, although the increase in yohimbine-induced impulsivity could not be attributed to an increase in baseline levels of phosphorylated CREB, the CORT-treated animals did show an increase in GluR1 expression that was in the active, phosphorylated state. Therefore, upon yohimbine injection, the adolescent CORT-treated animals may have higher levels of AMPA receptor signaling/trafficking and/or PKA activity that could lead to acute increases in phosphorylated CREB that are not observed at baseline, but may have been observed in response to yohimbine, as was demonstrated by Sun *et al* (2010). This possible difference in reactivity to norepinephrine-stimulated cAMP activity in the IOFC could also put adolescent CORT-treated animals at risk for behaving impulsively under stressful conditions, though this was not explicitly tested here. Studies of the interaction between stress, norepinephrine, and GluR1 activity in the hippocampus do indicate that norepinephrine and stress can lower the threshold for phosphorylation-dependent LTP-induced incorporation of GluR1 (Hu *et al*, 2007). If similar mechanisms exist in the IOFC, then the high levels of pGluR1 produced by chronic adolescent CORT could potentiate the effects of noradrenergic activation on impulsivity. In addition, increased PKA activation has been associated with disruption of PFC-dependent tasks, and the increase in

pGluR1 at the PKA site ser845 could indicate an increase in PKA activity that could be exacerbated by yohimbine to produce behavioral disruptions including greater impulsivity (Taylor *et al*, 1999; Arnsten *et al*, 2005).

Stress during adolescence has been associated with an increased risk for developing disorders associated with high impulsivity, including substance abuse and other psychiatric disorders (Moeller *et al*, 2001). Stress exposure during certain vulnerability periods, including adolescence, is known to alter how the HPA axis responds to future stressors (Barha *et al*, 2011; Burke *et al*, 2010; Isgor *et al*, 2004; Weintraub *et al*, 2010). Therefore, chronic high levels of the hormone corticosterone, which is released by the adrenal glands after HPA axis activation, could produce permanent changes in response to stressors long after the CORT exposure has ended. Indeed, several studies have shown that chronic stress or the presence of an anxiety disorder can increase sensitivity to the effects of yohimbine (Charney *et al*, 1984; Park *et al*, 2001; Rosen *et al*, 1999; Zoladz *et al*, 2008). However, the majority of differences in impulsivity observed here are unlikely to be explained by altered HPA axis function, but rather by long-lasting neuroplasticity in the circuits that regulate impulsive behavior and decision-making. Indeed, several studies involving adolescent stress exposure report that in adulthood the animals have no difference in baseline CORT levels, though they may have a reduction in peak CORT levels or faster negative feedback after an acute stressor (Weintraub *et al*, 2010; Burke *et al*, 2010; Barha *et al*, 2011).

The ability of chronic adolescent CORT to actually decrease measures of impulsivity on the 5CSRTT and SSRTT could reflect neuroplasticity that results in an increased sensitivity to the punishment that is used in both of these tests when an inappropriate response is made. Future studies could include analysis of physiological

measures like heart rate during the time out to determine whether rats previously exposed to CORT find the punishment more stressful than controls, and analysis of post-error slowing could assess how they learn after a mistake. Nevertheless, this explanation is supported by the fact that the adolescent CORT-treated animals were more impulsive on the delay-discounting procedure, which does not include a punishment component. Another interpretation of our results is that exposure to high levels of CORT during adolescence remodels brain circuits in a manner that makes individuals better able to cope with stressful situations in the future, and thus better able to inhibit responding under changing conditions. Indeed, several studies have indicated that chronic stress during adolescence can confer resilience to stressful events later in life (Lyons *et al*, 2010), and the adolescent CORT-treated animals were only less impulsive on tests that involved changing parameters, not when the task was well learned or parameters were stable.

All of these accounts could lead to the results observed in the present studies where animals show reduced impulsive action. The fact that adolescent CORT treatment increases impulsive choice would not be a direct result of any differences in sensitivity to punishment, coping, or anxiety-like behavior. Increased impulsive choice, however, could result from an inability to bridge delays between actions and outcomes and/or a greater perceived reduction in the value of a delayed reward. Likewise, the differences in different aspects of impulsivity could represent changes in specific brain circuits induced by chronic CORT exposure. For example, whereas yohimbine-induced impulsivity involves activation of specific signaling cascades in the IOFC (Sun *et al*, 2010), lesions of the infralimbic region of PFC, not IOFC, have been reported to increase impulsive responding in the face of increasing ITIs on the 5CSRTT (Chudasama *et al*, 2003). Similarly, behavioral inhibition on the SSRTT may be more dependent on dorsal medial PFC and dorsal striatal activity (Bari *et al*, 2011; Eagle and Robbins, 2003a; Eagle *et al*, 2011), whereas choice behavior on the delay-discounting task may be more dependent on a circuit involving the IOFC and ventral striatum (Bezzina *et al*, 2008; Bezzina *et al*, 2007; Mobini *et al*, 2002). Whatever the mechanism, an increase in the likelihood of making impulsive decisions, particularly for immediate 'gratification', could certainly put individuals at a higher risk for developing addictive disorders. It may be this increase in impulsive choice that underlies clinical reports that adolescents exposed to high levels of stress have an increased likelihood to develop addictive disorders (Covault *et al*, 2007; Lloyd and Turner, 2008; Pilowsky *et al*, 2009). Moreover, the increase in yohimbine-induced impulsivity represents an additional risk factor for psychiatric disorders, especially addiction. Drug addicts are known to be more likely to relapse after a period of abstinence in response to stress (Sinha, 2007; Stewart, 2003), and acute stress increases the propensity to use drugs (Sinha, 2001). Therefore, although baseline levels of behavioral inhibition may not be impaired after adolescent CORT exposure, the propensity to increase impulsivity in response to state-dependent changes could put these individuals at a greater risk for problem drug use.

Although many studies have not attempted to fractionate impulsivity when assessing risk for psychiatric disorders,

this is not the first study to find that different measures of impulsivity are not always correlated. Rats identified as having extremely high impulsivity on the 5CSRTT (upper 25% of population) do not show high novelty reactivity, which is considered another measure of impulsivity or risk taking (Belin *et al*, 2008; Molander *et al*, 2011). In humans, children with ADHD who are considered to be more impulsive showed either an increase in impulsive action or impulsive choice, but behavior on the two types of tasks was not correlated (Sonuga-Barke, 2002). In addition, a recent study found that adolescent atomoxetine treatment decreases impulsive choice without affecting impulsive action in adulthood (Sun *et al*, 2012). Therefore, exposure to high levels of stress hormones during adolescence may manifest as differential risk for certain psychiatric diseases. In addition, different forms of impulsivity may increase risk for developing an addiction to specific substances. For example, high innate impulsivity on the 5CSRTT is associated with the development of compulsive cocaine-, but not heroin-seeking behavior (Belin *et al*, 2008; Economidou *et al*, 2009; McNamara *et al*, 2010). On the other hand, impulsive choice on delay-discounting tasks has been associated with risk for developing an addiction to several drugs of abuse, and drug addiction is often characterized by more impulsive behavior (increased use or relapse) under stressful conditions, suggesting that chronic adolescent stress hormone exposure could certainly put individuals at risk for developing addictive disorders (Jentsch and Taylor, 1999; Moeller *et al*, 2001; de Wit, 2009). Impulsive choice on delay discounting may be more likely to influence addiction to specific substances, but more research is needed to determine how specific types of impulsivity confer risk for addiction to different substances.

In conclusion, we find that chronic adolescent CORT exposure does not globally alter general cognitive function or attentional ability and actually reduces measures of impulsive action. However, adolescent CORT exposure did significantly increase impulsive choice and impulsive action induced by yohimbine challenge. The behavioral outcomes identified here may be explained by alterations in AMPA receptor/PKA activity in the lateral OFC, but further research is needed to verify this hypothesis. Nevertheless, the results do indicate that individuals exposed to chronic, high levels of stress hormones during adolescence may be at an increased risk for developing psychiatric disorders including addiction because of an increased likelihood to make impulsive choices.

ACKNOWLEDGEMENTS

We thank Jessica Gordon for her technical assistance. This work was supported by the Interdisciplinary Research Consortium on Stress, Self-control and Addiction (UL1-DE19586 (Sinha)) and the NIH Roadmap for Medial Research/Common Fund, PHS AA017537, DA011717, MH066172 and the Connecticut Department of Mental Health and Addiction Services (Taylor).

DISCLOSURE

The authors declare no conflict of interest.

REFERENCES

- Andersen SL, Teicher MH (2009). Desperately driven and no brakes: developmental stress exposure and subsequent risk for substance abuse. *Neurosci Biobehav Rev* 33: 516–524.
- Arnsten AF, Ramos BP, Birnbaum SG, Taylor JR (2005). Protein kinase A as a therapeutic target for memory disorders: rationale and challenges. *Trends Mol Med* 11: 121–128.
- Barha CK, Brummelte S, Lieblich SE, Galea LAM (2011). Chronic restraint stress in adolescence differentially influences hypothalamic-pituitary-adrenal axis function and adult hippocampal neurogenesis in male and female rats. *Hippocampus* 21: 1216–1227.
- Bari A, Mar AC, Theobald DE, Elands SA, Oganya KCNA, Eagle DM et al (2011). Prefrontal and monoaminergic contributions to stop-signal task performance in rats. *J Neurosci* 31: 9254–9263.
- Belin D, Mar AC, Dalley JW, Robbins TW, Everitt BJ (2008). High impulsivity predicts the switch to compulsive cocaine-taking. *Science* 320: 1352–1355.
- Bezzina G, Body S, Cheung THC, Hampson CL, Bradshaw CM, Szabadi E et al (2008). Effect of disconnecting the orbital prefrontal cortex from the nucleus accumbens core on intertemporal choice behaviour: a quantitative analysis. *Behav Brain Res* 191: 272–279.
- Bezzina G, Cheung THC, Asgari K, Hampson CL, Body S, Bradshaw CM et al (2007). Effects of quinolinic acid-induced lesions of the nucleus accumbens core on intertemporal choice: a quantitative analysis. *Psychopharmacol* 195: 71–84.
- Bourke CH, Neigh GN (2011). Behavioral effects of chronic adolescent stress are sustained and sexually dimorphic. *Horm Behav* 60: 112–120.
- Burke AR, Renner KJ, Forster GL, Watt MJ (2010). Adolescent social defeat alters neural, endocrine and behavioral responses to amphetamine in adult male rats. *Brain Res* 1352: 147–156.
- Chambers RA, Taylor JR, Potenza MN (2003). Developmental neurocircuitry of motivation in adolescence: a critical period of addiction vulnerability. *Am J Psychiatry* 160: 1041–1052.
- Charney DS, Heninger GR, Breier A (1984). Noradrenergic function in panic anxiety. Effects of yohimbine in healthy subjects and patients with agoraphobia and panic disorder. *Arch Gen Psychiatry* 41: 751–763.
- Chudasama Y, Passetti F, Rhodes SEV, Lopian D, Desai A, Robbins TW (2003). Dissociable aspects of performance on the 5-choice serial reaction time task following lesions of the dorsal anterior cingulate, infralimbic and orbitofrontal cortex in the rat: differential effects on selectivity, impulsivity and compulsivity. *Behav Brain Res* 146: 105–119.
- Covault J, Tennen H, Armeli S, Conner TS, Herman AI, Cillessen AHN et al (2007). Interactive effects of the serotonin transporter 5-HTTLPR polymorphism and stressful life events on college student drinking and drug use. *Biol Psychiatry* 61: 609–616.
- de Wit H (2009). Impulsivity as a determinant and consequence of drug use: a review of underlying processes. *Addiction Biol* 14: 22–31.
- Eagle DM, Robbins TW (2003a). Inhibitory control in rats performing a stop-signal reaction-time task: effects of lesions of the medial striatum and d-amphetamine. *Behavioral Neurosci* 117: 1302–1317.
- Eagle DM, Robbins TW (2003b). Lesions of the medial prefrontal cortex or nucleus accumbens core do not impair inhibitory control in rats performing a stop-signal reaction time task. *Behav Brain Res* 146: 131–144.
- Eagle DM, Wong JCK, Allan ME, Mar AC, Theobald DE, Robbins TW (2011). Contrasting roles for dopamine D1 and D2 receptor subtypes in the dorsomedial striatum but not the nucleus accumbens core during behavioral inhibition in the stop-signal task in rats. *J Neurosci* 31: 7349–7356.
- Economidou D, Pelloux Y, Robbins TW, Dalley JW, Everitt BJ (2009). High impulsivity predicts relapse to cocaine-seeking after punishment-induced abstinence. *Biol Psychiatry* 65: 851–856.
- Evenden J (1999). Impulsivity: a discussion of clinical and experimental findings. *J Psychopharmacol* 13: 180–192.
- Fox HC, Bergquist KL, Peihua G, Sinha R (2010). Interactive effects of cumulative stress and impulsivity on alcohol consumption. *Alcohol Clin Exp Res* 34: 1376–1385.
- Gourley SL, Kedves AT, Olausson P, Taylor JR (2009). A history of corticosterone exposure regulates fear extinction and cortical NR2B, GluR2/3, and BDNF. *Neuropsychopharmacology* 34: 707–716.
- Gourley SL, Kiraly DD, Howell JL, Olausson P, Taylor JR (2008a). Acute hippocampal brain-derived neurotrophic factor restores motivational and forced swim performance after corticosterone. *Biol Psychiatry* 64: 884–890.
- Gourley SL, Taylor JR (2009). Recapitulation and reversal of a persistent depression-like syndrome in rodents. *Current Prot Neurosci Chapter 9*, Unit 9.32.
- Gourley SL, Wu FJ, Kiraly DD, Ploski JE, Kedves AT, Duman RS et al (2008b). Regionally specific regulation of ERK MAP kinase in a model of antidepressant-sensitive chronic depression. *Biol Psychiatry* 63: 353–359.
- Hu H, Real E, Takamiya K, Kang MG, Ledoux J, Haganir RL et al (2007). Emotion enhances learning via norepinephrine regulation of AMPA-receptor trafficking. *Cell* 131: 160–173.
- Isgor C, Kabbaj M, Akil H, Watson SJ (2004). Delayed effects of chronic variable stress during peripubertal-juvenile period on hippocampal morphology and on cognitive and stress axis functions in rats. *Hippocampus* 14: 636–648.
- Jacobson-Pick S, Richter-Levin G (2010). Differential impact of juvenile stress and corticosterone in juvenility and in adulthood, in male and female rats. *Behav Brain Res* 214: 268–276.
- Jankord R, Solomon MB, Albrecht J, Flak JN, Zhang R, Herman JP (2011). Stress vulnerability during adolescent development in rats. *Endocrinology* 152: 629–638.
- Jentsch JD, Taylor JR (1999). Impulsivity resulting from frontostriatal dysfunction in drug abuse: implications for the control of behavior by reward-related stimuli. *Psychopharmacology* 146: 373–390.
- Jentsch JD, Taylor JR (2003). Sex-related differences in spatial divided attention and motor impulsivity in rats. *Behav Neurosci* 117: 76–83.
- Laucht M, Treutlein J, Blomeyer D, Buchmann AF, Schmid B, Becker K et al (2009a). Interaction between the 5-HTTLPR serotonin transporter polymorphism and environmental adversity for mood and anxiety psychopathology: evidence from a high-risk community sample of young adults. *Int J Neuropsychopharmacol* 12: 737–747.
- Laucht M, Treutlein J, Schmid B, Blomeyer D, Becker K, Buchmann AF et al (2009b). Impact of psychosocial adversity on alcohol intake in young adults: moderation by the LL genotype of the serotonin transporter polymorphism. *Biol Psychiatry* 66: 102–109.
- Lewis DA (1997). Development of the prefrontal cortex during adolescence: insights into vulnerable neural circuits in schizophrenia. *Neuropsychopharmacology* 16: 385–398.
- Lloyd DA, Turner RJ (2008). Cumulative lifetime adversities and alcohol dependence in adolescence and young adulthood. *Drug Alcohol Dep* 93: 217–226.
- Lyons DM, Lopez JM, Yang C, Schatzberg AF (2000). Stress-level cortisol treatment impairs inhibitory control of behavior in monkeys. *J Neurosci* 20: 7816–7821.
- Lyons DM, Parker KJ, Schatzberg AF (2010). Animal models of early life stress: implications for understanding resilience. *Developmental Psychobiol* 52: 616–624.
- Mar AC, Robbins TW (2007). Delay discounting and impulsive choice in the rat. *Cur Prot Neurosci Chapter 8*, Unit 8.22.
- Mar AC, Walker ALJ, Theobald DE, Eagle DM, Robbins TW (2011). Dissociable effects of lesions to orbitofrontal cortex subregions on impulsive choice in the rat. *J Neurosci* 31: 6398–6404.

- McNamara R, Dalley JW, Robbins TW, Everitt BJ, Belin D (2010). Trait-like impulsivity does not predict escalation of heroin self-administration in the rat. *Psychopharmacology* **212**: 453–464.
- Mobini S, Body S, Ho M-Y, Bradshaw CM, Szabadi E, Deakin JFW et al (2002). Effects of lesions of the orbitofrontal cortex on sensitivity to delayed and probabilistic reinforcement. *Psychopharmacology* **160**: 290–298.
- Moeller FG, Barratt ES, Dougherty DM, Schmitz JM, Swann AC (2001). Psychiatric aspects of impulsivity. *Am J Psychiatry* **158**: 1783–1793.
- Molander AC, Mar A, Norbury A, Steventon S, Moreno M, Caprioli D et al (2011). High impulsivity predicting vulnerability to cocaine addiction in rats: some relationship with novelty preference but not novelty reactivity, anxiety or stress. *Psychopharmacology* **215**: 721–731.
- Myers EA, Banihashemi L, Rinaman L (2005). The anxiogenic drug yohimbine activates central viscerosensory circuits in rats. *J Comp Neurol* **492**: 426–441.
- Park CR, Campbell AM, Diamond DM (2001). Chronic psychosocial stress impairs learning and memory and increases sensitivity to yohimbine in adult rats. *Biol Psychiatry* **50**: 994–1004.
- Pilowsky DJ, Keyes KM, Hasin DS (2009). Adverse childhood events and lifetime alcohol dependence. *Am J Pub Health* **99**: 258–263.
- Rosen MI, Kosten TR, Kreek MJ (1999). The effects of naltrexone maintenance on the response to yohimbine in healthy volunteers. *Biol Psychiatry* **45**: 1636–1645.
- Sinha R (2001). How does stress increase risk of drug abuse and relapse? *Psychopharmacology* **158**: 343–359.
- Sinha R (2007). The role of stress in addiction relapse. *Cur Psychiatry Rep* **9**: 388–395.
- Sonuga-Barke EJS (2002). Psychological heterogeneity in AD/HD—a dual pathway model of behaviour and cognition. *Behav Brain Res* **130**: 29–36.
- Spear LP (2000). The adolescent brain and age-related behavioral manifestations. *Neurosci Biobehav Rev* **24**: 417–463.
- Stewart J (2003). Stress and relapse to drug seeking: studies in laboratory animals shed light on mechanisms and sources of long-term vulnerability. *Am J Addictions* **12**: 1–17.
- Sun H, Cocker PJ, Zeeb FD, Winstanley CA (2012). Chronic atomoxetine treatment during adolescence decreases impulsive choice, but not impulsive action, in adult rats and alters markers of synaptic plasticity in the orbitofrontal cortex. *Psychopharmacology* **219**: 285–301.
- Sun H, Green TA, Theobald DEH, Birnbaum SG, Graham DL, Zeeb FD et al (2010). Yohimbine increases impulsivity through activation of cAMP response element binding in the orbitofrontal cortex. *Biol Psychiatry* **67**: 649–656.
- Swann AC (2010). Mechanisms of impulsivity in bipolar disorder and related illness. *Epidemiol Psychiatr Soc* **19**: 120–130.
- Swann AC, Birnbaum D, Jagar AA, Dougherty DM, Moeller FG (2005). Acute yohimbine increases laboratory-measured impulsivity in normal subjects. *Biol Psychiatry* **57**: 1209–1211.
- Taylor JR, Birnbaum S, Ubriani R, Arnsten AF (1999). Activation of cAMP-dependent protein kinase A in prefrontal cortex impairs working memory performance. *J Neurosci* **19**: RC23.
- Toth E, Gersner R, Wilf-Yarkoni A, Raizel H, Dar DE, Richter-Levin G et al (2008). Age-dependent effects of chronic stress on brain plasticity and depressive behavior. *J Neurochem* **107**: 522–532.
- Weintraub A, Singaravelu J, Bhatnagar S (2010). Enduring and sex-specific effects of adolescent social isolation in rats on adult stress reactivity. *Brain Res* **1343**: 83–92.
- Winstanley CA (2011). The utility of rat models of impulsivity in developing pharmacotherapies for impulse control disorders. *Brit J Pharmacol* **164**: 1301–1321.
- Xu Z, Zhang Y, Hou B, Gao Y, Wu Y, Zhang C (2011). Chronic corticosterone administration from adolescence through early adulthood attenuates depression-like behaviors in mice. *J Affective Dis* **131**: 128–135.
- Zoladz PR, Conrad CD, Fleshner M, Diamond DM (2008). Acute episodes of predator exposure in conjunction with chronic social instability as an animal model of post-traumatic stress disorder. *Stress* **11**: 259–281.