



# Role of $\beta$ Pix in the kidney

Alexander Staruschenko<sup>1\*</sup> and Andrey Sorokin<sup>2\*</sup>

<sup>1</sup> Department of Physiology, Medical College of Wisconsin, Milwaukee, WI, USA

<sup>2</sup> Division of Nephrology, Department of Medicine, Medical College of Wisconsin, Milwaukee, WI, USA

## Edited by:

Nuria M. Pastor-Soler, University of Pittsburgh School of Medicine, USA

## Reviewed by:

Alan Pao, Stanford University School of Medicine, USA

Kirk L. Hamilton, University of Otago, New Zealand

## \*Correspondence:

Alexander Staruschenko, Department of Physiology, Medical College of Wisconsin, 8701 Watertown Plank Road, Milwaukee, WI 53226, USA.

e-mail: staruschenko@mcw.edu;

Andrey Sorokin, Division of Nephrology, Department of Medicine, Medical College of Wisconsin, 8701 Watertown Plank Road, Milwaukee, WI 53226, USA.

e-mail: sorokin@mcw.edu

Small GTPases function as molecular switches in cell signaling, alternating between an inactive, GDP-bound state, and active GTP-bound state.  $\beta$ Pix is one of guanine nucleotide exchange factors (GEFs) that catalyze the exchange of bound GDP for ambient GTP. The central goal of this review article is to summarize recent findings on  $\beta$ Pix and the role it plays in kidney pathology and physiology. Recent studies shed new light on several key questions concerning the signaling mechanisms mediated by  $\beta$ Pix. This manuscript provides a review of the various mechanisms whereby  $\beta$ Pix has been shown to function within the kidney through a wide range of actions. Both canonical GEF activity and non-canonical signaling pathways mediated by  $\beta$ Pix are discussed. Distribution patterns of  $\beta$ Pix in the kidney will be also covered. Much has yet to be discerned, but it is clear that  $\beta$ Pix plays a significant role in the kidney.

**Keywords:** Pix, GEF, small GTPase, Rac1, Cdc42, 14-3-3, p21-activated kinase, urothelium

## GUANINE NUCLEOTIDE EXCHANGE FACTORS (GEFs)

Low molecular weight small G proteins (or small GTPases) are involved in the regulation of a plethora of biological pathways. The Rho family of small G proteins comprises at least 20 members of ubiquitously expressed proteins in mammals, including its best characterized members RhoA, Rac1, and Cdc42 (Heasman and Ridley, 2008). Much evidence has accumulated in the last 20 years to implicate activation of Rho family proteins in the pathogenesis of hypertension and kidney diseases (Sharpe and Hendry, 2003; Loirand et al., 2006; Heasman and Ridley, 2008; Loirand and Pacaud, 2010). Small GTPases switch between an active GTP-bound and an inactive GDP-bound form. The cycling of small G proteins between these two states is modulated by guanine nucleotide exchange factors (GEFs) and GTPase-activating proteins (GAPs; **Figure 1**). In addition to GEFs and GAPs, Rho guanine-dissociation inhibitors (RhoGDIs) play a role in this cycle by binding Rho family proteins in an inactive state within the cytoplasm (Boulter et al., 2010).

p21-Activated kinase (PAK)-interacting exchange factor  $\beta$  ( $\beta$ Pix) is a member of the diffuse B-cell lymphoma (DBL) Pix/cloned out of library (Cool) family of Rho-GEFs for Rac1 and Cdc42. It is known that the PAK family of kinases is regulated through interaction with the small GTPases Cdc42 and Rac1, but the signaling components immediately upstream or downstream of these proteins were not known until the late 1990s when Pix was first cloned and characterized. Pix was first cloned as p85SPR (SH3 domain-containing proline-rich protein) and it was proposed that this protein may interact with protein(s) in focal complexes (Oh et al., 1997). Manser et al. (1998) also have purified and cloned a new protein, binding tightly through its N-terminal SH3 domain to a conserved proline-rich PAK sequence. Similarly, two isoforms

of Cool proteins were also cloned in 1998 (Bagrodia et al., 1998). Both identified isoforms of Cool contained a SH3 domain that directly mediates interaction with Pak and tandem DBL homology and pleckstrin homology (PH) domains (Bagrodia et al., 1998).

## DOMAIN STRUCTURE AND FUNCTION OF $\beta$ Pix

The Pix sub-family/group contains two members,  $\alpha$ Pix and  $\beta$ Pix.  $\beta$ Pix is a product of *ARHGEF7* gene located in chromosome 13 in humans. Orthologs of *ARHGEF7* have been cloned now from 26 species. **Table 1** demonstrates gene/chromosome locations of  $\alpha$ Pix and  $\beta$ Pix genes in human, mouse, and rat. Interestingly that  $\alpha$ Pix is conservatively localized at the X chromosome in all presented species. Thus, this protein could be potentially involved in some gender distinctions. However, there are no data so far related to a role of Pix proteins in sex differences.

**Figure 2** depicts domain structure of the Pix protein family.  $\alpha$ Pix contains a CH (calponin homology/actin binding) domain in the N-termini not present on the two splice variants of  $\beta$ Pix. The CH and C-terminal portions of the molecule are necessary for the binding of  $\alpha$ Pix with  $\beta$ -parvin, which are known to interact with integrin-linked kinase (ILK) and is involved in the early stage of cell-substrate interaction through integrins (Rosenberger et al., 2003). Oligomerization of Pix proteins appears to be very important for their signaling. Putative leucine zipper coiled-coil domains at the C-terminal end of the members of Pix family of proteins mediate homodimerization of Pix molecules (Kim et al., 2001). Interestingly, the formation of heterodimer between  $\alpha$ Pix and  $\beta$ Pix was also demonstrated. Again, C-terminal ends, which contains leucine zipper coiled-coil domains, are required for their interaction and heterodimerization (Rosenberger et al., 2003).

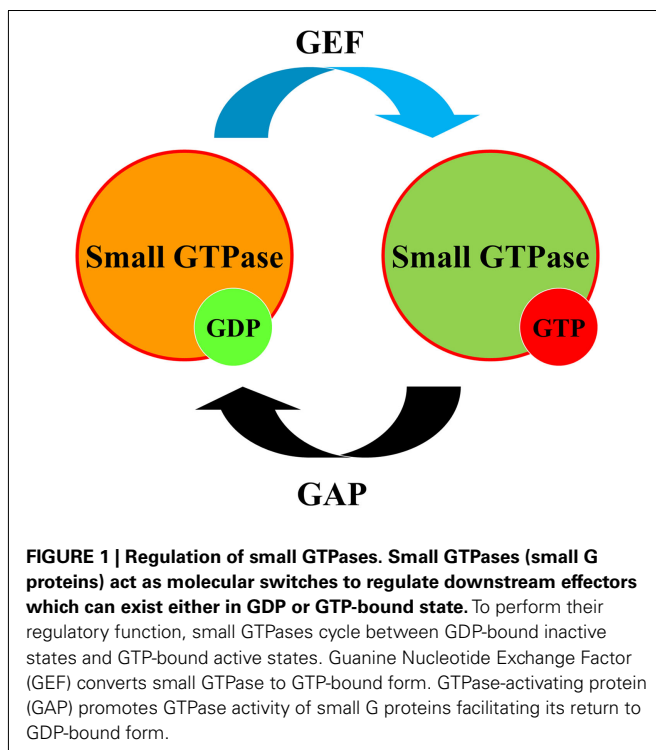
Deletion of amino acids 602–611 in rat  $\beta_1$ Pix completely abolished its ability to form dimers (Chahdi and Sorokin, 2008b). Recently, using combination of structural and hydrodynamic techniques,  $\beta$ Pix was shown to exist in a trimeric state *in vitro* (Schlenker and Rittinger, 2009).

$\beta$ Pix exists in several splice isoforms with two major isoforms  $\beta_1$ Pix and  $\beta_2$ Pix, which are different due to the presence of a serine-rich region in the C-terminus of  $\beta_2$ Pix (Koh et al., 2001). Since  $\beta_1$ Pix emerged as a predominant Pix isoform in kidney, this review will focus predominantly on the biology and function of  $\beta_1$ Pix (Koh et al., 2001). The percent of homology between  $\alpha$ Pix,  $\beta_1$ Pix, and  $\beta_2$ Pix isoforms is shown in **Figure 2**.

All Pix isoforms have a DBL homology (DH) domain and a flanking PH domain. The DH domain required for mediating guanine nucleotide exchange on the Rho family GTPases Cdc42 and Rac1 (Hoffman and Cerione, 2002). The PH domain is necessary for binding with phosphatidylinositol lipids and proteins including the  $\beta\gamma$ -subunits of heterotrimeric G proteins. In addition the C-terminus of  $\beta_1$ Pix contains a glutamic acid-rich region (ERD) which is similar in  $\alpha$ Pix and  $\beta_2$ Pix (Feng et al., 2002). As mentioned above, all Pix isoforms contain a N-terminal SH3 domain. SH3 domain mediates specific interaction of  $\beta$ Pix with

a proline–arginine motif (PxxxPR) present within the ubiquitin ligase Cbl and Pak1 kinase (Schmidt et al., 2006).

It is known that  $\beta$ Pix interacts with G protein-coupled receptor kinase interactor 1 (GIT1) via the GIT-binding site in the carboxy-terminal portion of  $\beta$ Pix (Botrugno et al., 2006). GIT1 contains domains which can bind dual specificity kinases MEKs (MAP kinase/ERK kinases) facilitating phosphorylation/activation of ERK (extracellular signal-regulated kinase). It was recently proposed that  $\beta_1$ Pix signaling complex might associate with ERK (Stockton et al., 2007). In addition, a complex involving  $\beta$ Pix, GIT1, and integrin  $\alpha_v\beta_8$  may regulate embryonic vascular stabilization (Liu et al., 2012). Mutations in *ARHGEF6*, encoding  $\alpha$ Pix, were found in patients with X-linked non-specific mental retardation (MRX; Kutsche et al., 2000). Mutation screening of 119 patients with non-specific mental retardation revealed a mutation in the first intron of *ARHGEF6* (IVS1-11T  $\rightarrow$  C) in all affected males in a large Dutch family. The mutation resulted in preferential skipping of exon 2, predicting a protein lacking 28 amino acids (Kutsche et al., 2000). Furthermore, there is some evidence describing a role of Pix proteins in both focal adhesion assembly as well as disassembly. The role of  $\alpha$ Pix and  $\beta$ Pix in focal adhesion formation was thoroughly reviewed (Rosenberger and Kutsche, 2006).



### CANONICAL AND NON-CANONICAL $\beta$ Pix SIGNALING

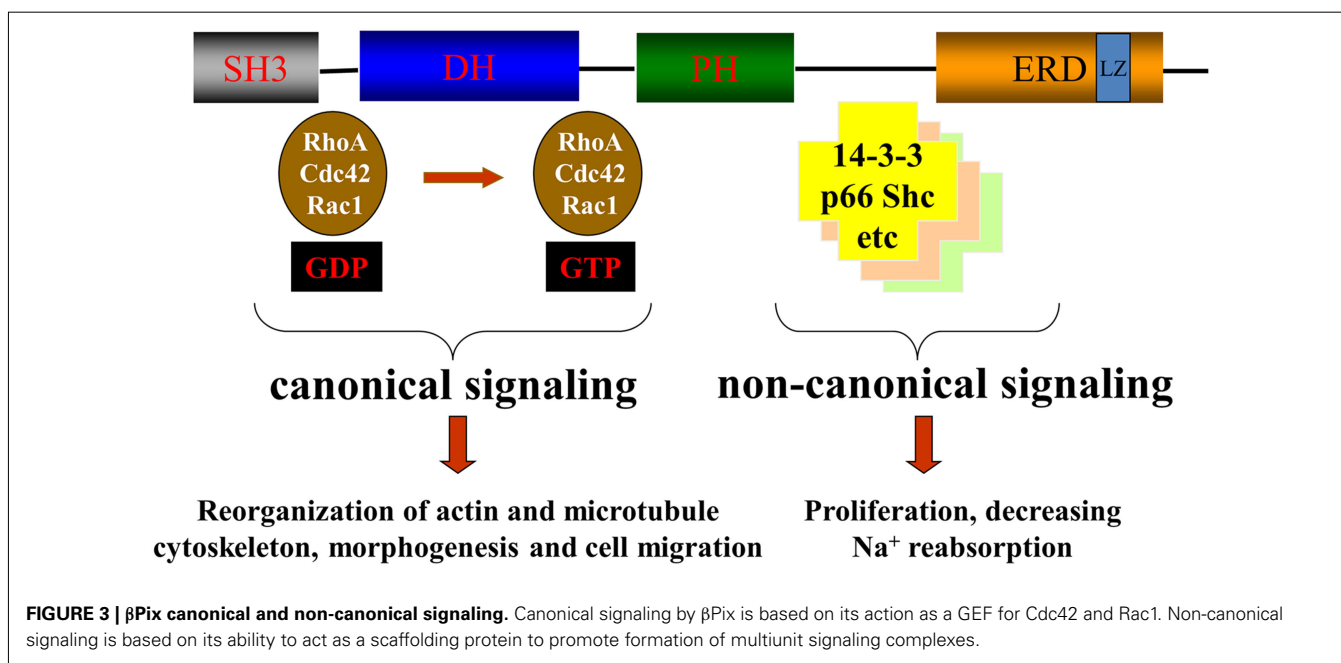
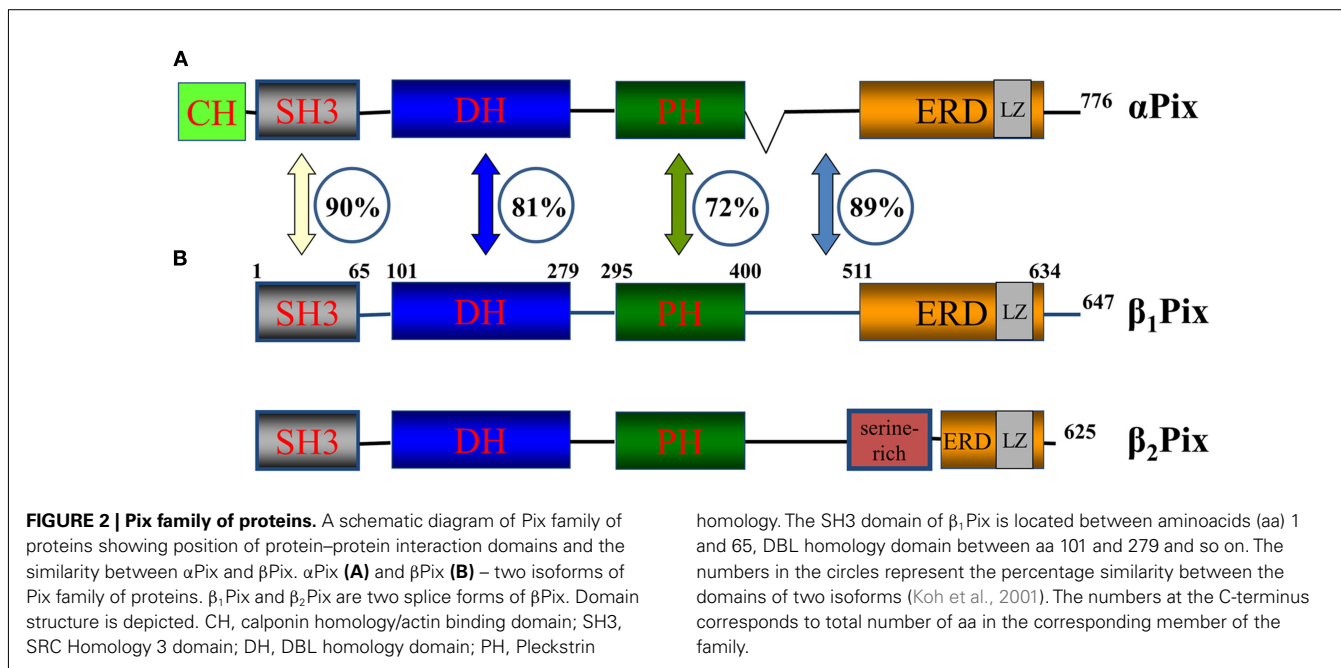
The best characterized function of  $\beta$ Pix is its GEF activity resulting in activation of Rac1 and/or Cdc42 small GTPases. However some examples of non-canonical activity of  $\beta$ Pix, when  $\beta$ Pix acts as a scaffolding protein, have been also described (Chahdi and Sorokin, 2008a; Pavlov et al., 2010). Both canonical and non-canonical actions of  $\beta$ Pix are depicted in **Figure 3**.

As mentioned above, in addition to GEF activity,  $\beta$ Pix can serve as a scaffolding protein in some signaling pathways. Using tagged 14-3-3 proteins, Pawson and colleagues showed for the first time that  $\beta$ Pix can bind 14-3-3 proteins (Jin et al., 2004). Later, Acker-Palmer and colleagues using tandem affinity purification (TAP) and liquid chromatography coupled to mass spectrometry (LC-MS) method confirmed 14-3-3 binding with  $\beta$ Pix (Angrand et al., 2006). We have provided a mechanistic insight into the role of 14-3-3 $\beta$  in modulating  $\beta_1$ Pix activity and identified 14-3-3 $\beta$  binding sites on  $\beta_1$ Pix (Chahdi and Sorokin, 2008b). **Figure 4** provides a schematic explaining 14-3-3/ $\beta_1$ Pix interaction. In this model, binding of 14-3-3 $\beta$  to  $\beta_1$ Pix is minimal and does not inhibit  $\beta_1$ Pix-GEF activity, since basal Rac1 is high and  $\beta_1$ Pix is able to promote membrane ruffle formation (**Figure 4A**). However, forskolin stimulation induces  $\beta_1$ Pix phosphorylation on Ser516 and Thr526 by protein kinase A (PKA), resulting in increased 14-3-3 $\beta$  binding.

**Table 1 | Gene/chromosome locations of  $\alpha$ Pix and  $\beta$ Pix.**

Protein	Gene/chromosome location (human)	Gene/chromosome location (mouse)	Gene/chromosome location (rat)
<i>Arhgef6</i> ( $\alpha$ Pix)	Chr. X: 135,747,709–135,863,503	Chr. X: 54,484,662–54,591,906	Chr. X: 141,946,362–142,068,557
<i>Arhgef7</i> ( $\beta$ Pix)	Chr. 13: 111,767,624–111,958,081	Chr. 8: 11,728,105–11,835,219	Chr. 16: 82,521,224–82,603,338

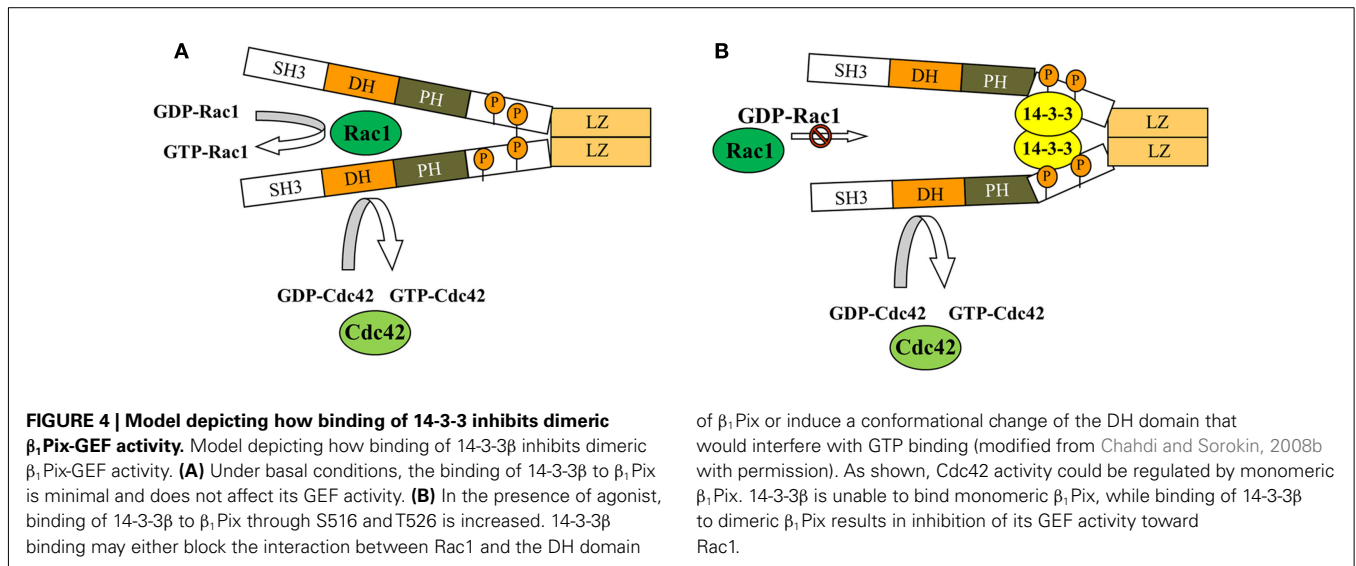
MCW Rat Genome Database website (<http://rgd.mcw.edu/>) was used as a source for gene/chromosome locations.



Consequently, the binding of 14-3-3β inhibits β<sub>1</sub>Pix-GEF activity through a conformational change that would directly affect the DH domain or block the interaction between β<sub>1</sub>Pix and Rac1 (Chahdi and Sorokin, 2008b; Figure 4B). Thus, 14-3-3 proteins, along with other proteins such as adaptor protein p66<sup>Shc</sup>, can be involved in βPix-mediated signaling pathways.

It is known that direct interaction between Gα subunits of heterotrimeric G proteins and GEFs can take place. Active Gα<sub>13</sub> directly interacts and activates p115RhoGEF (Hart et al., 1998), while another member of the family of Rho guanine nucleotide exchange factors, leukemia-associated RhoGEF (LARG), interacts

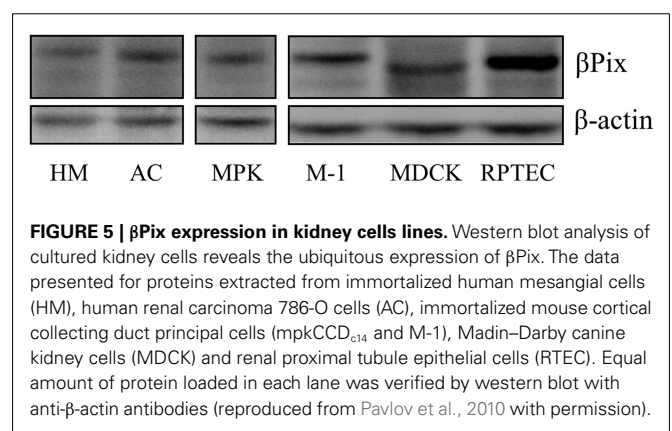
with active Gα<sub>q</sub> and Gα<sub>12/13</sub> through its regulator of G protein signaling (RGS) boxes to activate RhoA (Booden et al., 2002). βPix does not belong to the family of RGS box-containing RhoA-specific GEFs, but nevertheless, it was shown to interact specifically with a number of Gα subunits of endogenous heterotrimeric G proteins in the presence of AMF (Chahdi and Sorokin, 2010a,b). This binding requires βPix dimerization, since dimerization-deficient mutant fails to associate with Gα subunits. It is possible that this interaction is somehow mediated by binding of βPix to caveolin-1, a scaffolding protein that enables compartmentalization of specific signaling molecules in caveoli.



β<sub>1</sub>Pix co-immunoprecipitates with caveolin-1 and this interaction was significantly reduced in cells expressing dimerization-deficient β<sub>1</sub>Pix mutant, indicating that dimerization is crucial for caveolin-1 binding to β<sub>1</sub>Pix (Chahdi and Sorokin, 2010b). Caveolin-1 has been shown to interact with different Gα subunits through caveolin-1 scaffolding domain (Li et al., 1995; Oh and Schnitzer, 2001). It is possible that dimeric β<sub>1</sub>Pix in caveolae acts as platform to facilitate the binding and the activation of signaling molecules.

**RENAL LOCALIZATION**

βPix is expressed in a wide variety of human tissues with a majority of normal tissues displaying weak to moderate cytoplasmic immunoreactivity. We have recently described the expression of βPix in rat renal tissues and in a variety of cultured kidney cell by Western Blotting (antibodies against βPix do not distinguish between β<sub>1</sub>Pix and β<sub>2</sub>Pix isoforms; see above about βPix isoforms; Pavlov et al., 2010). The data presented in **Figure 5** show expression of βPix in human mesangial cells, renal carcinoma 786-O cells, differentiated mouse cortical collecting duct principal cells (mpkCCD<sub>c14</sub> and M-1), Madin–Darby canine kidney (MDCK) cells, and renal proximal tubule epithelial cells. These results demonstrate that βPix is expressed in various kidney cultured cell lines. Since expression profile of cultured cells often differs from the pattern of expression in corresponding tissues, immunohistochemistry analysis was performed in Sprague-Dawley rat kidneys to identify a distribution of βPix protein *in vivo*. **Figure 6** demonstrates representative immunohistochemistry staining for βPix in the kidney cortex at 20× and 40× magnifications (Pavlov et al., 2010). Negative controls (left; staining with secondary antibodies in the absence of primary antibodies) are also shown. Additional negative control (stained without primary and secondary antibodies) also did not show any staining (data not shown). As seen from this immunohistochemical image, βPix is expressed in variety of cells. Firstly, there is strong staining for βPix in the glomeruli (in both mesangial cells and podocytes). Secondly, βPix is highly expressed in the cortical collecting ducts. Thirdly, βPix is localized in vessels, and particularly in vascular smooth muscle cells.



Unexpectedly, βPix was expressed most extensively in renal pelvis area (the junction of ureter and kidney), where strong staining was identified in renal urothelial cells (data not shown).

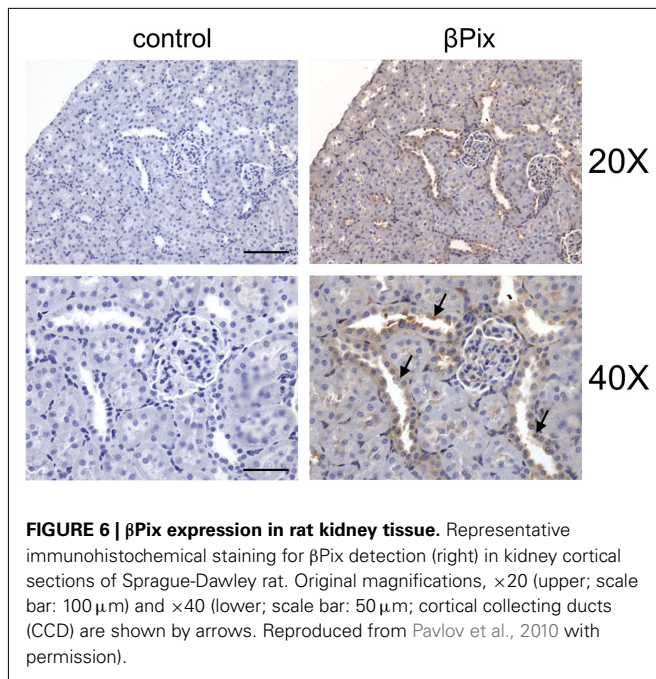
**ROLE OF βpix IN THE KIDNEY**

There are some ligands which modulate expression/activity of βPix in the kidney. For instance, endothelin-1 (ET-1) has emerged as an important regulator of renal physiology and pathophysiology (Kohan et al., 2011a,b). We previously demonstrated that ET-1-induced GTP-loading of Cdc42 and this activation was mediated by β<sub>1</sub>Pix (Chahdi et al., 2005; Chahdi and Sorokin, 2006). We have also shown that ET-1 induces β<sub>1</sub>Pix translocation to focal adhesions through a PKA-dependent pathway (Chahdi et al., 2005). Moreover, we have reported up-regulation of βPix expression by ET-1 in primary human mesangial cells and identified a number of signaling molecules which form multiunit signaling complex with βPix (Chahdi and Sorokin, 2008a). ET-1 induces βPix expression and also triggers signaling via βPix.

**βPix AND REGULATION OF ION TRANSPORT**

We have also recently demonstrated that βPix play an important role in regulation of the epithelial Na<sup>+</sup> channel (ENaC;





**FIGURE 6 |  $\beta$ Pix expression in rat kidney tissue.** Representative immunohistochemical staining for  $\beta$ Pix detection (right) in kidney cortical sections of Sprague-Dawley rat. Original magnifications,  $\times 20$  (upper; scale bar:  $100\ \mu\text{m}$ ) and  $\times 40$  (lower; scale bar:  $50\ \mu\text{m}$ ; cortical collecting ducts (CCD) are shown by arrows. Reproduced from Pavlov et al., 2010 with permission).

Pavlov et al., 2010). ENaC plays a critical role in fine-tuning of sodium reabsorption in the kidney (Loffing and Korbmacher, 2009; Soundararajan et al., 2010; Staruschenko, 2012). Several small GTPases, including RhoA and Rac1 alter ENaC activity (Staruschenko et al., 2004; Pochynuk et al., 2006, 2007a,b; Karpushev et al., 2011). It is of note, that our data suggest that the ability of  $\beta_1$ Pix to act as a scaffolding protein, not its GEF activity toward Cdc42 and Rac1, is first and foremost responsible for its capability to inhibit ENaC. 14-3-3 proteins are essential components of ENaC regulation. These proteins associate with serum glucocorticoid kinase 1 (SGK1)-phosphorylated Nedd4-2 to maintain its phosphorylated/inactive state and thereby obstruct its physical association with ENaC (Bhalla et al., 2005; Ichimura et al., 2005; Liang et al., 2006, 2008; Nagaki et al., 2006). SGK1 is an important aldosterone-induced gene, which controls ENaC-mediated  $\text{Na}^+$  transport (Chen et al., 1999; Naray-Fejes-Toth et al., 1999). Recent studies have begun to shed light on the mechanistic basis of SGK1-mediated modulation of Nedd4-2, by implicating phosphorylation-induced interaction with 14-3-3 proteins (Bhalla et al., 2005; Ichimura et al., 2005). Thus  $\beta$ Pix/14-3-3 interaction may be necessary to coordinate SGK1 regulation of Nedd4-2 and ENaC.  $\beta$ Pix inhibits the epithelial  $\text{Na}^+$  channel through a  $\beta$ Pix/14-3-3/Nedd4-2 pathway.

$\beta$ Pix was also shown to modulate another protein involved in ion transport processes in the kidney. Members of the  $\text{Na}^+/\text{H}^+$  exchanger (NHE) family are integral membrane proteins that catalyze the extrusion of intracellular proton ( $\text{H}^+$ ) ions in exchange for extracellular  $\text{Na}^+$  ions and play vital roles in the regulation of cellular pH as well as transepithelial ion and water transport (Bobulescu et al., 2005; McDonough, 2010; Pao et al., 2010). It was recently shown that  $\beta$ Pix, Shank2, and NHE3 form a macromolecular complex when expressed heterologously in mammalian cells as well as endogenously in kidney.  $\beta$ Pix up-regulates

NHE3 membrane expression and activity by Shank2-mediated protein–protein interaction and by activating Rho GTPases in the apical regions of epithelial cells (Lee et al., 2010). Thus,  $\beta$ Pix appears to increase  $\text{Na}^+/\text{H}^+$  exchange through a NHE3/Shank2 protein–protein interaction.

#### $\beta$ Pix AND REGULATION OF GLOMERULAR FUNCTION

$\beta$ Pix has been shown to be involved in regulation of glomerular function. In rat glomerulus  $\beta$ Pix is expressed in mesangial cells and in podocytes (see Figure 6; Pavlov et al., 2010). While the role of the expression of  $\beta$ Pix in glomerular podocytes has not been addressed yet,  $\beta$ Pix controls several functions of glomerular mesangial cells (GMC). In the adult glomerulus GMC provide structural support for the glomerular capillary network and regulate filtration area by contraction. In addition, GMC proliferation is initiated in the progress of experimental diabetic nephropathy and some forms of glomerulonephritis (Couser and Johnson, 1994). GMC are also responsible for the synthesis of extracellular matrix (ECM) proteins contributing to renal fibrosis. GMC are in constant cross-talk with endothelial cells and podocytes, which involves receipt and secretion of a number of regulatory molecules, including the potent bioactive peptides of the endothelin family (Sorokin, 2011). Endothelins, and particularly ET-1, stimulate a complex network of interconnected signaling cascades in GMC (Sorokin et al., 2002) and GMC play a central role in the physiology and pathophysiology of ET-1 in the kidney (Sorokin and Kohan, 2003). The physiological and pathological responses elicited in GMC by ET-1 ultimately require changes in the cytoskeletal organization whose architecture is modulated by the Rho family proteins Cdc42 and Rac1.  $\beta_1$ Pix serves as GEF for ET-1-mediated activation of Cdc42 in GMC and is translocated to focal complexes in ET-1-treated cells (Chahdi et al., 2005; Chahdi and Sorokin, 2006).  $\beta_1$ Pix is phosphorylated by PKA and overexpression of  $\beta_1$ Pix enhanced ET-1-induced Cdc42 activation, whereas overexpression of  $\beta_1$ Pix with major PKA phosphorylation sites replaced by alanine [ $\beta_1$ Pix(S516A/T526A)] blocked  $\beta_1$ Pix translocation to focal complexes and prevented Cdc42 activation (Chahdi et al., 2005). This pathway uses canonical signaling by  $\beta$ Pix, which acts as a GEF. These studies suggest that ET-1 regulates cytoskeleton reorganization in GMC at least partially via stimulation of  $\beta$ Pix GEF activity.

Glomerular mesangial cells are major constituent of the glomeruli and modulation of signaling in this type of cells is critical for the regulation of glomerular function. In addition to canonical  $\beta$ Pix modulation of the actin cytoskeleton in the GMC, as described above,  $\beta$ Pix play a role in this type of cells via its non-canonical signaling. Thus, the scaffolding activity of  $\beta$ Pix is important for ET-1-mediated downregulation of  $\text{p}27^{\text{kip}1}$  and progression of the cell through the cell cycle (Chahdi and Sorokin, 2008a). While activation of small GTPase Ras is indispensable for mitogen-induced proliferation of GMC, the proliferative effect of ET-1 also involves regulation of proteins which control the cell cycle. Thus, mitogenic signaling of ET-1 is inhibited by antisense oligonucleotides targeting cyclin D1 as well as by overexpression of a non-phosphorylatable form of pRb (Terada et al., 1998). It is established that downregulation of  $\text{p}27^{\text{kip}1}$  results in cell cycle progression into S phase. Expression of  $\text{p}27^{\text{kip}1}$  is under control

of Forkhead box O-class (FOXO) transcription factor FOXO3a which is regulated by Akt-dependent phosphorylation resulting in the cytoplasmic localization of FOXO3a and downregulation of p27<sup>kip1</sup>. Prolonged exposure of GMC to ET-1 resulted in the increase of expression of  $\beta$ Pix and adaptor protein p66<sup>Shc</sup> and the formation of multiunit signaling complex between p66<sup>Shc</sup>,  $\beta$ Pix, and FOXO3a (Chahdi and Sorokin, 2008a). Since the depletion of either  $\beta$ Pix or p66<sup>Shc</sup> inhibited ET-1-induced cell proliferation, the scaffolding activity of  $\beta$ Pix could be important for the progression of proliferative glomerular diseases. Using either p66<sup>Shc</sup> or Akt depleted cells it was shown that  $\beta_1$ Pix-mediated FOXO3a phosphorylation and p27<sup>kip1</sup> downregulation required p66<sup>Shc</sup> but was independent of Akt. Depletion of  $\beta$ Pix prevented p27<sup>kip1</sup> downregulation induced by ET-1 (Chahdi and Sorokin, 2008a). Since FOXO3a and other FOXO transcription factors function as tumor-suppressor proteins by promoting apoptosis and inhibiting cell proliferation (Huang and Tindall, 2006), the  $\beta$ Pix-dependent regulation of FOXO3a suggests a role of  $\beta$ Pix in regulation of apoptosis. Thus,  $\beta$ Pix signaling could promote GMC proliferation through  $\beta$ Pix-dependent FOXO3a phosphorylation and p27<sup>kip1</sup> downregulation contributing to kidney pathologies associated with abnormal function of renal mesangial cells.

#### $\beta$ Pix AND REGULATION OF UROTHELIAL SIGNALING

There is little known about the role for  $\beta$ Pix in urothelial cells. Urothelial cells form the interface between the urinary space and the underlying tissues. Recently, the urothelium (also known as transitional cell epithelium) had emerged as a mechanosensory tissue which not only maintains a barrier, but also is involved in complex sensory function (Birder, 2010). Urothelium is composed of several cell layers with an apical layer represented by cells known as umbrella cells. This single layer of superficial cells is strongly immunostained with anti- $\beta$ Pix antibodies (data not shown). Even though extra caution must be exercised when defining the protein expression in the urothelium, since it is particularly prone to non-specific adsorption of antibodies (Yu and Hill, 2011), the immunostaining of  $\beta$ Pix in the upper layer of renal urothelium seems specific. First, it is very intense – the single cell layer which lines renal pelvis is probably the most intensively stained group of cells in rat kidney. Tissue sections stained with secondary antibody alone showed no signal, confirming the specificity of  $\beta$ Pix staining in the renal pelvis. The role of urothelial cells in visceral, chemical, and mechanical sensation has been the focus of recent investigation (Birder, 2010). However, it must be taken into consideration that the majority of studies devoted to urothelial cell signaling are focused upon cells which line either the bladder or ureters. Urothelial cells of renal pelvis and calyx come from separate urothelial lineage. Thus, the uncovered communication mechanisms from the bladder and the proximal urethra urothelial cells are not necessary active in those from the ureter/renal pelvis (Birder, 2010). Nevertheless, it is intriguing that one of proteins expressed in the urothelium is ENaC (Hager et al., 2001), which is a target of regulation by  $\beta$ Pix (Pavlov et al., 2010). Urothelial carcinomas represent 90% of bladder carcinomas which are among the most common cancers in the United States (Tanaka and Sonpavde, 2011). Since, as described above,  $\beta$ Pix was shown to be essential for mitogenic activity of endothelin in GMC (Chahdi

and Sorokin, 2008a), its potential role in promotion of proliferation related diseases, such as urothelial carcinomas, cannot be ruled out. The existence of connection between  $\beta$ Pix expression and carcinogenesis is further supported by observation that  $\beta$ Pix is overexpressed in human breast cancer tissues (Ahn et al., 2003). The role of  $\beta$ Pix in renal urothelial is likely to be linked to either ENaC regulation or proliferation of urothelial cells.

#### COMPLEXITY OF $\beta$ Pix SIGNALING IN THE KIDNEY

It is not clear yet whether  $\beta$ Pix signaling in different tubule and glomerular cells are dissimilar or mediated by the same or interacting pathways. There is abundant evidence that  $\beta$ Pix plays a role in regulation of a number of signaling proteins and different mechanisms mediate these effects. For instance,  $\beta$ Pix regulates NHE3 in the renal proximal tubules and ENaC in the collecting ducts through canonical and non-canonical mechanisms, respectively. We cannot exclude the possibility that these pathways intersect in the same type of cells and the combination of signaling via canonical and non-canonical mechanisms are quite possible in the regulation of some cellular functions. However, we hypothesize that effects of  $\beta$ Pix vary in different types of cells due to distinct expression of other signaling proteins involved in  $\beta$ Pix-mediated signaling pathways. Even though the role of ET-1 as one of important activator of  $\beta$ Pix is essentially characterized, there are number of other factors that could potentially modulate  $\beta$ Pix expression and activity. Particularly, AMP-activated protein kinase (AMPK) K has been identified as a regulator of several ion transporters of significance in renal physiology, including the cystic fibrosis transmembrane conductance regulator (CFTR), ENaC, the Na<sup>+</sup>-K<sup>+</sup>-2Cl<sup>-</sup> co-transporter (NKCC), and the vacuolar H<sup>+</sup>-ATPase (V-ATPase) (Hallows et al., 2000, 2010; Carattino et al., 2005; Takiar et al., 2011) and might be a trigger for  $\beta$ Pix-mediated signaling pathways.

#### FUTURE DIRECTIONS

The significant progress in understanding the role of  $\beta$ Pix in the kidney should come from applying gene targeting techniques to well characterized animal models of renal pathologies.  $\alpha$ Pix knockout mice had reduced numbers of mature lymphocytes and defective immune responses (Missy et al., 2008). The phenotype of  $\beta$ Pix knockouts has not been reported yet and it is possible that complete knockout is lethal. Deletion of several amino acids in the C-terminus of  $\beta$ Pix is sufficient to abolish dimerization whereas scaffolding activity of  $\beta$ Pix often requires dimerization (Chahdi and Sorokin, 2008b). Thus, it is possible to generate  $\beta$ Pix mutants which will be devoid of either GEF or scaffolding activity. We have previously shown, that deletion of  $\beta_1$ Pix aminoacids 602–611 interferes with ability of  $\beta_1$ Pix to form complexes with signaling molecules 14-3-3 (Chahdi and Sorokin, 2008b), p66<sup>Shc</sup>, and FOXO3a (Chahdi and Sorokin, 2008a). It does not interfere with ability of  $\beta_1$ Pix to catalyze GTP-loading of Cdc42. On the other hand mutant  $\beta_1$ Pix S516A/T526A works as a dominant negative with regard to ET-1-mediated Cdc42 activation, but retains scaffolding activities. It would be informative to introduce changes into *Arhgef7* gene in order to generate animals which will produce either dimerization-deficient mutant, or  $\beta$ Pix devoid of GEF activity. Rat models offer unique opportunities with regard to studying

hypertension induced nephropathy and proliferative glomerular diseases. Until recently the precise modification of rat genome was not possible. Recently the generation of targeted gene changes using engineered transcription activator-like effector nucleases (TALENs) and Zinc Finger nucleases (ZFN) in inbred rat strains which does not require embryonic stem cells has become one of the major breakthroughs in the field dramatically increasing opportunities of investigators in utilizing rats for biomedical research (Geurts et al., 2009, 2010; Jacob et al., 2010; Moreno et al., 2011). Studies aiming to achieve rat genome precise editing (introduction of targeted modifications in the genome) to evaluate the role of canonical and non-canonical signaling of  $\beta$ Pix in rat models of kidney diseases are underway.

## CONCLUSION

As briefly summarized in this review article,  $\beta$ Pix has several important protein-protein interaction and signaling domains which enable it to play an important role in variety signaling processes either as a GEF for small GTPases in Rho family or as a scaffolding protein.  $\beta$ Pix has the potential to become a new therapeutic target in proliferative kidney diseases because of its critical role in variety of physiological and pathophysiological

## REFERENCES

- Ahn, S. J., Chung, K. W., Lee, R. A., Park, I. A., Lee, S. H., Park, D. E., and Noh, D. Y. (2003). Overexpression of  $\beta$ Pix-a in human breast cancer tissues. *Cancer Lett.* 193, 99–107.
- Angrand, P. O., Segura, I., Volkel, P., Ghidelli, S., Terry, R., Brajenovic, M., Vintersten, K., Klein, R., Superti-Furga, G., Drewes, G., Kuster, B., Bouwmester, T., and Acker-Palmer, A. (2006). Transgenic mouse proteomics identifies new 14-3-3-associated proteins involved in cytoskeletal rearrangements and cell signaling. *Mol. Cell. Proteomics* 5, 2211–2227.
- Bagrodia, S., Taylor, S. J., Jordon, K. A., Van, A. L., and Cerione, R. A. (1998). A novel regulator of p21-activated kinases. *J. Biol. Chem.* 273, 23633–23636.
- Bhalla, V., Daidie, D., Li, H., Pao, A. C., LaGrange, L. P., Wang, J., Vandewalle, A., Stockand, J. D., Staub, O., and Pearce, D. (2005). Serum- and glucocorticoid-regulated kinase 1 regulates ubiquitin ligase neural precursor cell-expressed, developmentally down-regulated protein 4–2 by inducing interaction with 14-3-3. *Mol. Endocrinol.* 19, 3073–3084.
- Birder, L. A. (2010). Urothelial signaling. *Auton. Neurosci.* 153, 33–40.
- Bobulescu, I. A., Di, S. E., and Moe, O. W. (2005).  $\text{Na}^+/\text{H}^+$  exchangers: physiology and link to hypertension and organ ischemia. *Curr. Opin. Nephrol. Hypertens.* 14, 485–494.
- Booden, M. A., Siderovski, D. P., and Der, C. J. (2002). Leukemia-associated Rho guanine nucleotide exchange factor promotes G $\alpha$ q-coupled activation of RhoA. *Mol. Cell Biol.* 22, 4053–4061.
- Botrugno, O. A., Paris, S., Za, L., Gualdoni, S., Cattaneo, A., Bachi, A., and de Curtis, I. (2006). Characterization of the endogenous GIT1- $\beta$ PIX complex, and identification of its association to membranes. *Eur. J. Cell Biol.* 85, 35–46.
- Boulter, E., Garcia-Mata, R., Guilluy, C., Dubash, A., Rossi, G., Brennwald, P. J., and BurrIDGE, K. (2010). Regulation of Rho GTPase crossstalk, degradation and activity by RhoGDI1. *Nat. Cell Biol.* 12, 477–483.
- Carattino, M. D., Edinger, R. S., Grieser, H. J., Wise, R., Neumann, D., Schlattner, U., Johnson, J. P., Kleyman, T. R., and Hallows, K. R. (2005). Epithelial sodium channel inhibition by AMP-activated protein kinase in oocytes and polarized renal epithelial cells. *J. Biol. Chem.* 280, 17608–17616.
- Chahdi, A., Miller, B., and Sorokin, A. (2005). Endothelin 1 induces  $\beta$ 1Pix translocation and Cdc42 activation via protein kinase A-dependent pathway. *J. Biol. Chem.* 280, 578–584.
- Chahdi, A., and Sorokin, A. (2006). Endothelin 1 stimulates  $\beta$ 1Pix-dependent activation of Cdc42 through the G $\text{so}$  pathway. *Exp. Biol. Med.* 231, 761–765.
- Chahdi, A., and Sorokin, A. (2008a). Endothelin-1 couples  $\beta$ Pix to p66Shc: role of  $\beta$ Pix in cell proliferation through FOXO3a phosphorylation and p27kip1 down-regulation independently of Akt. *Mol. Biol. Cell* 19, 2609–2619.
- Chahdi, A., and Sorokin, A. (2008b). Protein kinase A-dependent phosphorylation modulates  $\beta$ 1Pix guanine nucleotide exchange factor activity through 14-3-3  $\beta$  binding. *Mol. Cell Biol.* 28, 1679–1687.
- Chahdi, A., and Sorokin, A. (2010a). Endothelin-1 induces p66Shc activation through EGF receptor transactivation: role of  $\beta$ 1Pix/Gai3 interaction. *Cell. Signal.* 22, 325–329.
- Chahdi, A., and Sorokin, A. (2010b). The role of  $\beta$ 1Pix/caveolin-1 interaction in endothelin signaling through Gasubunits. *Biochem. Biophys. Res. Commun.* 391, 1330–1335.
- Chen, S. Y., Bhargava, A., Mastroberardino, L., Meijer, O. C., Wang, J., Buse, P., Firestone, G. L., Verrey, E., and Pearce, D. (1999). Epithelial sodium channel regulated by aldosterone-induced protein sgk. *Proc. Natl. Acad. Sci. U.S.A.* 96, 2514–2519.
- Couser, W. G., and Johnson, R. J. (1994). Mechanisms of progressive renal disease in glomerulonephritis. *Am. J. Kidney Dis.* 23, 193–198.
- Feng, Q., Albeck, J. G., Cerione, R. A., and Yang, W. (2002). Regulation of the Cool/Pix proteins: key binding partners of the Cdc42/Rac targets, the p21-activated kinases. *J. Biol. Chem.* 277, 5644–5650.
- Geurts, A. M., Cost, G. J., Freyvert, Y., Zeitler, B., Miller, J. C., Choi, V. M., Jenkins, S. S., Wood, A., Cui, X., Meng, X., Vincent, A., Lam, S., Michalkiewicz, M., Schilling, R., Foeckler, J., Kalloway, S., Weiler, H., Menoret, S., Anegon, I., Davis, G. D., Zhang, L., Rebar, E. J., Gregory, P. D., Urnov, F. D., Jacob, H. J., and Buelow, R. (2009). Knock-out rats via embryo microinjection of zinc-finger nucleases. *Science* 325, 433.
- Geurts, A. M., Cost, G. J., Remy, S., Cui, X., Tesson, L., Usal, C., Menoret, S., Jacob, H. J., Anegon, I., and Buelow, R. (2010). Generation of gene-specific mutated rats using zinc-finger nucleases. *Methods Mol. Biol.* 597, 211–225.
- Hager, H., Kwon, T. H., Vinnikova, A. K., Masilamani, S., Brooks, H. L., Frokier, J., Knepper, M. A., and Nielsen, S. (2001). Immunocytochemical and immunoelectron microscopic localization of  $\alpha$ -,  $\beta$ -, and  $\gamma$ -ENaC in rat kidney. *Am. J. Physiol. Renal Physiol.* 280, F1093–F1106.
- Hallows, K. R., Mount, P. F., Pastor-Soler, N. M., and Power, D. A. (2010). Role of the energy sensor AMP-activated protein kinase in renal physiology and disease. *Am. J. Physiol. Renal Physiol.* 298, F1067–F1077.
- Hallows, K. R., Raghuram, V., Kemp, B. E., Witters, L. A., and Foskett, J. K. (2000). Inhibition of cystic fibrosis transmembrane conductance regulator by novel interaction with the metabolic sensor AMP-activated protein kinase. *J. Clin. Invest.* 105, 1711–1721.

## ACKNOWLEDGMENTS

Work from the authors' laboratories was supported by the American Diabetes Association grant 1-10-BS-168 (to Alexander Staruschenko), and the National Institutes of Health grants DK088018 (to Andrey Sorokin) and HL108880 (to Alexander Staruschenko).

- Hart, M. J., Jiang, X., Kozasa, T., Roscoe, W., Singer, W. D., Gilman, A. G., Sternweis, P. C., and Bollag, G. (1998). Direct stimulation of the guanine nucleotide exchange activity of p115 RhoGEF by  $G\alpha_{13}$ . *Science* 280, 2112–2114.
- Heasman, S. J., and Ridley, A. J. (2008). Mammalian Rho GTPases: new insights into their functions from in vivo studies. *Nat. Rev. Mol. Cell Biol.* 9, 690–701.
- Hoffman, G. R., and Cerione, R. A. (2002). Signaling to the Rho GTPases: networking with the DH domain. *FEBS Lett.* 513, 85–91.
- Huang, H., and Tindall, D. J. (2006). FOXO factors: a matter of life and death. *Future Oncol.* 2, 83–89.
- Ichimura, T., Yamamura, H., Sasamoto, K., Tominaga, Y., Taoka, M., Kakiuchi, K., Shinkawa, T., Takahashi, N., Shimada, S., and Isobe, T. (2005). 14-3-3 Proteins modulate the expression of epithelial  $Na^+$  channels by phosphorylation-dependent interaction with Nedd4-2 ubiquitin ligase. *J. Biol. Chem.* 280, 13187–13194.
- Jacob, H. J., Lazar, J., Dwinell, M. R., Moreno, C., and Geurts, A. M. (2010). Gene targeting in the rat: advances and opportunities. *Trends Genet.* 26, 510–518.
- Jin, J., Smith, F. D., Stark, C., Wells, C. D., Fawcett, J. P., Kulkarni, S., Metelnikov, P., O'Donnell, P., Taylor, P., Taylor, L., Zougman, A., Woodgett, J. R., Langeberg, L. K., Scott, J. D., and Pawson, T. (2004). Proteomic, functional, and domain-based analysis of in vivo 14-3-3 binding proteins involved in cytoskeletal regulation and cellular organization. *Curr. Biol.* 14, 1436–1450.
- Karpushev, A. V., Levchenko, V., Ilatovskaya, D. V., Pavlov, T. S., and Staruschenko, A. (2011). Novel role of Rac1/WAVE signaling mechanism in regulation of the epithelial  $Na^+$  channel. *Hypertension* 57, 996–1002.
- Kim, S., Lee, S. H., and Park, D. (2001). Leucine zipper-mediated homodimerization of the p21-activated kinase-interacting factor, βPix. Implication for a role in cytoskeletal reorganization. *J. Biol. Chem.* 276, 10581–10584.
- Koh, C. G., Manser, E., Zhao, Z. S., Ng, C. P., and Lim, L. (2001). βPIX, the PAK-interacting exchange factor, requires localization via a coiled-coil region to promote microvillus-like structures and membrane ruffles. *J. Cell Sci.* 114, 4239–4251.
- Kohan, D. E., Rossi, N. F., Inscho, E. W., and Pollock, D. M. (2011a). Regulation of blood pressure and salt homeostasis by endothelin. *Physiol. Rev.* 91, 1–77.
- Kohan, D. E., Inscho, E. W., Weston, D., and Pollock, D. M. (2011b). Physiology of endothelin and the kidney. *Compr. Physiol.* 1, 883–919.
- Kutsche, K., Yntema, H., Brandt, A., Jantke, I., Nothwang, H. G., Orth, U., Boavida, M. G., David, D., Chelly, J., Fryns, J. P., Moraine, C., Ropers, H. H., Hamel, B. C., van Bokhoven, H., and Gal, A. (2000). Mutations in ARHGGEF6, encoding a guanine nucleotide exchange factor for Rho GTPases, in patients with X-linked mental retardation. *Nat. Genet.* 26, 247–250.
- Lee, J. S., Lee, Y. M., Kim, J. Y., Park, H. W., Grinstein, S., Orłowski, J., Kim, E., Kim, K. H., and Lee, M. G. (2010). βPix up-regulates  $Na^+/H^+$  exchanger 3 through a Shank2-mediated protein-protein interaction. *J. Biol. Chem.* 285, 8104–8113.
- Li, S., Okamoto, T., Chun, M., Sargiacomo, M., Casanova, J. E., Hansen, S. H., Nishimoto, I., and Lisanti, M. P. (1995). Evidence for a regulated interaction between heterotrimeric G proteins and caveolin. *J. Biol. Chem.* 270, 15693–15701.
- Liang, X., Butterworth, M. B., Peters, K. W., Walker, W. H., and Frizzell, R. A. (2008). An obligatory heterodimer of 14-3-3β and 14-3-3ε is required for aldosterone regulation of the epithelial sodium channel. *J. Biol. Chem.* 283, 27418–27425.
- Liang, X., Peters, K. W., Butterworth, M. B., and Frizzell, R. A. (2006). 14-3-3 Isoforms are induced by aldosterone and participate in its regulation of epithelial sodium channels. *J. Biol. Chem.* 281, 16323–16332.
- Liu, J., Zeng, L., Kennedy, R. M., Gruenig, N. M., and Childs, S. J. (2012). βPix plays a dual role in cerebral vascular stability and angiogenesis, and interacts with integrin  $\alpha_v\beta_8$ . *Dev. Biol.* 363, 95–105.
- Loffing, J., and Korbmayer, C. (2009). Regulated sodium transport in the renal connecting tubule (CNT) via the epithelial sodium channel (ENaC). *Pflugers Arch.* 458, 111–135.
- Loirand, G., Guerin, P., and Pacaud, P. (2006). Rho kinases in cardiovascular physiology and pathophysiology. *Circ. Res.* 98, 322–334.
- Loirand, G., and Pacaud, P. (2010). The role of Rho protein signaling in hypertension. *Nat. Rev. Cardiol.* 7, 637–647.
- Manser, E., Loo, T. H., Koh, C. G., Zhao, Z. S., Chen, X. Q., Tan, L., Tan, I., Leung, T., and Lim, L. (1998). PAK kinases are directly coupled to the PIX family of nucleotide exchange factors. *Mol. Cell.* 1, 183–192.
- McDonough, A. A. (2010). Mechanisms of proximal tubule sodium transport regulation that link extracellular fluid volume and blood pressure. *Am. J. Physiol. Regul. Integr. Comp. Physiol.* 298, R851–R861.
- Missy, K., Hu, B., Schilling, K., Harenberg, A., Sakk, V., Kuchenbecker, K., Kutsche, K., and Fischer, K. D. (2008). βPIX Rho GTPase guanine nucleotide exchange factor regulates lymphocyte functions and antigen receptor signaling. *Mol. Cell Biol.* 28, 3776–3789.
- Moreno, C., Hoffman, M., Stodola, T. J., Didier, D. N., Lazar, J., Geurts, A. M., North, P. E., Jacob, H. J., and Greene, A. S. (2011). Creation and characterization of a renin knockout rat. *Hypertension* 57, 614–619.
- Nagaki, K., Yamamura, H., Shimada, S., Saito, T., Hisanaga, S., Taoka, M., Isobe, T., and Ichimura, T. (2006). 14-3-3 Mediates phosphorylation-dependent inhibition of the interaction between the ubiquitin E3 ligase Nedd4-2 and epithelial  $Na^+$  channels. *Biochemistry* 45, 6733–6740.
- Naray-Fejes-Toth, A., Canessa, C., Cleaveland, E. S., Aldrich, G., and Fejes-Toth, G. (1999). sgk is an aldosterone-induced kinase in the renal collecting duct. Effects on epithelial  $Na^+$  channels. *J. Biol. Chem.* 274, 16973–16978.
- Oh, P., and Schnitzer, J. E. (2001). Segregation of heterotrimeric G proteins in cell surface microdomains. Gq binds caveolin to concentrate in caveolae, whereas Gi and Gs target lipid rafts by default. *Mol. Biol. Cell* 12, 685–698.
- Oh, W. K., Yoo, J. C., Jo, D., Song, Y. H., Kim, M. G., and Park, D. (1997). Cloning of a SH3 domain-containing proline-rich protein, p85SPR, and its localization in focal adhesion. *Biochem. Biophys. Res. Commun.* 235, 794–798.
- Pao, A. C., Bhargava, A., Di, S. F., Quigley, R., Shao, X., Wang, J., Thomas, S., Zhang, J., Shi, M., Funder, J. W., Moe, O. W., and Pearce, D. (2010). Expression and role of serum and glucocorticoid-regulated kinase 2 in the regulation of  $Na^+/H^+$  exchanger 3 in the mammalian kidney. *Am. J. Physiol. Renal Physiol.* 299, F1496–F1506.
- Pavlov, T. S., Chahdi, A., Ilatovskaya, D. V., Levchenko, V., Vandewalle, A., Pochynyuk, O., Sorokin, A., and Staruschenko, A. (2010). Endothelin-1 inhibits the epithelial  $Na^+$  channel through βPIX/14-3-3/Nedd4-2. *J. Am. Soc. Nephrol.* 21, 833–843.
- Pochynyuk, O., Medina, J., Gamper, N., Genth, H., Stockand, J. D., and Staruschenko, A. (2006). Rapid translocation and insertion of the epithelial  $Na^+$  channel in response to RhoA signaling. *J. Biol. Chem.* 281, 26520–26527.
- Pochynyuk, O., Staruschenko, A., Bugaj, V., Lagrange, L., and Stockand, J. D. (2007a). Quantifying RhoA facilitated trafficking of the epithelial  $Na^+$  channel toward the plasma membrane with total internal reflection fluorescence-fluorescence recovery after photobleaching. *J. Biol. Chem.* 282, 14576–14585.
- Pochynyuk, O., Stockand, J. D., and Staruschenko, A. (2007b). Ion channel regulation by Ras, Rho, and Rab small GTPases. *Exp. Biol. Med.* 232, 1258–1265.
- Rosenberger, G., Jantke, I., Gal, A., and Kutsche, K. (2003). Interaction of αPIX (ARHGGEF6) with β-parvin (PARVB) suggests an involvement of αPIX in integrin-mediated signaling. *Hum. Mol. Genet.* 12, 155–167.
- Rosenberger, G., and Kutsche, K. (2006). αPIX and βPIX and their role in focal adhesion formation. *Eur. J. Cell Biol.* 85, 265–274.
- Schlenker, O., and Rittinger, K. (2009). Structures of dimeric GIT1 and trimeric β-PIX and implications for GIT-PIX complex assembly. *J. Mol. Biol.* 386, 280–289.
- Schmidt, M. H., Husnjak, K., Szymkiewicz, I., Haglund, K., and Dikic, I. (2006). Cbl escapes Cdc42-mediated inhibition by downregulation of the adaptor molecule βPix. *Oncogene* 25, 3071–3078.
- Sharpe, C. C., and Hendry, B. M. (2003). Signaling: focus on Rho in renal disease. *J. Am. Soc. Nephrol.* 14, 261–264.
- Sorokin, A. (2011). Endothelin signaling and actions in the renal mesangium. *Contrib. Nephrol.* 172, 50–62.
- Sorokin, A., Foschi, M., and Dunn, M. J. (2002). Endothelin signalling and regulation of protein kinases in glomerular mesangial cells. *Clin. Sci.* 103, 132S–136S.
- Sorokin, A., and Kohan, D. E. (2003). Physiology and pathology of endothelin-1 in renal mesangium. *Am. J. Physiol. Renal Physiol.* 285, F579–F589.



- Soundararajan, R., Pearce, D., Hughey, R. P., and Kleyman, T. R. (2010). Role of epithelial sodium channels and their regulators in hypertension. *J. Biol. Chem.* 285, 30363–30369.
- Staruschenko, A. (2012). Regulation of transport in the connecting tubule and cortical collecting duct. *Compr. Physiol.* 2, 1541–1584.
- Staruschenko, A., Nichols, A., Medina, J. L., Camacho, P., Zheleznova, N. N., and Stockand, J. D. (2004). Rho small GTPases activate the epithelial  $\text{Na}^+$  channel. *J. Biol. Chem.* 279, 49989–49994.
- Stockton, R., Reutershan, J., Scott, D., Sanders, J., Ley, K., and Schwartz, M. A. (2007). Induction of vascular permeability:  $\beta$ PIX and GIT1 scaffold the activation of extracellular signal-regulated kinase by PAK. *Mol. Biol. Cell* 18, 2346–2355.
- Takiar, V., Nishio, S., Seo-Mayer, P., King, J. D. Jr., Li, H., Zhang, L., Karihaloo, A., Hallows, K. R., Somlo, S., and Caplan, M. J. (2011). Activating AMP-activated protein kinase (AMPK) slows renal cystogenesis. *Proc. Natl. Acad. Sci. U.S.A.* 108, 2462–2467.
- Tanaka, M. F., and Sonpavde, G. (2011). Diagnosis and management of urothelial carcinoma of the bladder. *Postgrad. Med.* 123, 43–55.
- Terada, Y., Inoshita, S., Nakashima, O., Yamada, T., Tamamori, M., Ito, H., Sasaki, S., and Marumo, F. (1998). Cyclin D1, p16, and retinoblastoma gene regulate mitogenic signaling of endothelin in rat mesangial cells. *Kidney Int.* 53, 76–83.
- Yu, W., and Hill, W. G. (2011). Defining protein expression in the urothelium: a problem of more than transitional interest. *Am. J. Physiol. Renal Physiol.* 301, F932–F942.
- Conflict of Interest Statement:** The authors declare that the research was conducted in the absence of any commercial or financial relationships that could be construed as a potential conflict of interest.
- Received: 28 March 2012; accepted: 03 May 2012; published online: 28 May 2012.
- Citation: Staruschenko A and Sorokin A (2012) Role of  $\beta$ Pix in the kidney. *Front. Physiol.* 3:154. doi: 10.3389/fphys.2012.00154
- This article was submitted to *Frontiers in Renal and Epithelial Physiology*, a specialty of *Frontiers in Physiology*. Copyright © 2012 Staruschenko and Sorokin. This is an open-access article distributed under the terms of the Creative Commons Attribution Non Commercial License, which permits non-commercial use, distribution, and reproduction in other forums, provided the original authors and source are credited.