

Published in final edited form as:

*Brain Lang.* 2012 September ; 122(3): 142–150. doi:10.1016/j.bandl.2011.12.009.

## Dopamine regulation of human speech and bird song: A critical review

Kristina Simonyan<sup>1,\*</sup>, Barry Horwitz<sup>2</sup>, and Erich D. Jarvis<sup>3</sup>

<sup>1</sup>Department of Neurology and Otolaryngology, Mount Sinai School of Medicine, New York, NY.

<sup>2</sup>Department of Brain Imaging and Modeling Section, National Institute on Deafness and Other Communication Disorders, National Institutes of Health, Bethesda, MD.

<sup>3</sup>Howard Hughes Medical Institute, Department of Neurobiology, Duke University, Durham, NC

### Abstract

To understand the neural basis of human speech control, extensive research has been done using a variety of methodologies in a range of experimental models. Nevertheless, several critical questions about learned vocal motor control still remain open. One of them is the mechanism(s) by which neurotransmitters, such as dopamine, modulate speech and song production. In this review, we bring together the two fields of investigations of dopamine action on voice control in humans and songbirds, who share similar behavioral and neural mechanisms for speech and song production. While human studies investigating the role of dopamine in speech control are limited to reports in neurological patients, research on dopaminergic modulation of bird song control has recently expanded our views on how this system might be organized. We discuss the parallels between bird song and human speech from the perspective of dopaminergic control as well as outline important differences between these species.

### Keywords

speech and song control; basal ganglia; brain networks; neurotransmission

### Introduction

Production of learned vocal expressions is a rare ability that is found only in humans, bats, dolphins, elephants, and sea lions among mammals and in oscine songbirds (e.g., zebra finches, canaries, crows), parrots and hummingbirds among birds (Janik and Slater, 1997; Jurgens, 2002; Jarvis, 2004; Poole et al., 2005). Among these species, only humans have the most advanced abilities for speech and language production. Their closest relatives, non-human primates, have a very limited ability to learn new acoustic structures or sequences of vocalizations in order to produce new types of vocalizations (Jurgens, 2002; Egnor and Hauser, 2004) and, therefore, do not represent a good model for probing the brain mechanisms of learned vocal motor control (Simonyan and Horwitz, 2011). Similarly, the closest relatives of oscine songbirds, suboscine songbirds, lack the ability to learn new songs (Kroodsma and Konishi, 1991). Thus, the fundamental question of how exactly the brain controls learned voice production for speech and song remains to be addressed through the studies in vocal learning species only. While such studies in dolphins, elephants and sea lions are not always possible and feasible, research in the past years in humans, songbirds

---

\*Corresponding author: Kristina Simonyan, MD, PhD Department of Neurology Box 1137 Mount Sinai School of Medicine New York, NY Tel.: (212) 241-0656 Fax: (646) 537-8628 kristina.simonyan@mssm.edu.

and bats has provided some insights into the similarities and differences of their vocal motor pathways, which may lay a foundation for the understanding of the specialized control of their learned voice production.

Here, we review one of the aspects of learned vocal motor control in humans and songbirds, its dopaminergic regulation. First, we briefly outline the definitions of learned and innate voice production. We introduce the structural, functional and neurochemical organization of the basal ganglia with emphases on their involvement in human speech and bird song control. We then provide an overview of up-to-date findings on dopaminergic function of speech and song control in humans and songbirds, respectively, and suggest hypotheses on the role of dopamine in speaking and singing. We conclude with a discussion of the common and distinct features of learned vocal motor circuitry and its dopaminergic regulations between humans and songbirds.

## **Voice, vocalization, phonation, speech, song ... What's the difference?**

The terms ‘voice’, ‘vocalization’, and ‘phonation’ are often used interchangeably, but there are fine differences between them. In a narrower usage, ‘voice’ refers only to sound production during vocal fold vibration. In this regard, ‘phonation’ is a technical term to describe the physical and physiological processes involved with vocal fold vibration that leads to sound production. In a broader usage, ‘voice production’ is synonymous to human speaking and singing, which are learned (voluntary) behaviors. The term ‘speech’ usually refers to learned voice production with semantic content by humans, while human song can be produced both with and without semantic content. Among birds, song can be learned or innate depending on species, such as in oscine and suboscine songbirds, respectively. Song consists of syllables produced in a sequence separate from isolated calls. On the other hand, the term ‘voice production’ is frequently used not only in reference to speech and its elements (e.g., production of vowels, syllables) but also interchangeably with the term ‘vocalizations’ for the description of non-speech and pre-speech sounds, such as those produced by animals and human infants.

The behavioral mechanisms of vocal learning to produce human speech and birds song are thought to be similar because both have critical (or sensitive) periods for learning in early life before adulthood and require auditory experience and feedback to develop and maintain their learned vocal sequences (Doupe and Kuhl, 1999). There are, however, some fundamental differences between vocal learning birds and humans. While humans are able to learn new vocal expressions throughout the lifespan, closed-ended (age-limited) vocal learners, such as zebra finches, are not able to imitate new songs well, if at all, in adulthood, whereas the open-ended vocal learners, such as African Grey parrots, have only limited ability to imitate new sounds as adults (Catchpole and Slater, 2008). As a next distinction, the repertoire of human speech is much larger than that of the most vocal learning birds. Importantly, birds use most of their songs for affective communication as opposed to semantic communication typical for human speech. Despite these differences, learned song among vocal learning birds and speech in humans are considered to be semi-functionally analogous. However, a closer functional analogy, however, would be either song in vocal learning birds and song with affective meaning in humans (i.e., singing to gain attention) or learned sequences of calls with some higher levels of semantic complexity in some vocal learning birds (e.g., African Grey parrots) and speech in humans.

## **Basal ganglia circuits controlling human speech and bird song production**

As at the behavioral level, there are similarities, but also important differences in the brain organization between humans and songbirds in general and with respect to vocal motor pathways in particular. A major common feature of the basal ganglia circuitry between

humans and birds is the formation of the closed cortico-basal ganglia-thalamo-cortical loops, including parallel direct and indirect basal ganglia pathways. A major difference between humans and birds is that the latter's cortex-like structure, called pallium, does not have a six-layered cortical organization as typically present in mammals, but rather consists of clusters of nuclei. The pallial neurons have histological similarities with those found in the basal ganglia; however, pallial neuroanatomical connectivity and functional properties are similar to those of the mammalian cortex (Reiner et al., 2004; Doupe et al., 2005; Jarvis et al., 2005). Furthermore, in contrast to the human speech controlling system, the songbird pallidum, substantia nigra pars reticulata and subthalamic nucleus are not considered to be part of the bird song system.

### **Anatomy and function of the human basal ganglia: Implications for speech**

As we stated earlier, speech production is unique to humans, while other mammals, including non-human primates, have a limited ability to produce learned vocalizations. However, much of our understanding about the anatomical organization of the basal ganglia circuitry in humans comes from extensive research in non-human primates and rodents with an assumption of fundamental anatomical similarities between these mammalian species. On the other hand, recently developed neuroimaging techniques, such as diffusion tensor tractography and transcranial magnetic stimulation, have started probing human brain anatomical connectivity, investigations of which were limited in the past due to invasiveness of most neuroanatomical methodologies. Below, we present the anatomy of the basal ganglia circuitry and its implications for speech control based largely on neuroanatomical tracing studies in non-human primates and rodents as well as on limited, to date, neuroimaging studies in humans.

The human basal ganglia are a collection of closely interconnected subcortical nuclei that include the striatum (divided into the putamen and caudate nucleus), globus pallidus (divided into the internal (GPi) and external (GPe) segments), substantia nigra (divided into the pars compacta (SNc) and pars reticulata (SNr)), and the subthalamic nucleus (STN). The limbic portion of the basal ganglia includes the nucleus accumbens, ventral pallidum (or substantia innominata), and ventral tegmental area (VTA) (Fig. 1A). From the developmental point of view, the basal ganglia are considered to consist of only telencephalic structures, the striatum and pallidum, which are modulated by the brainstem structures, the STN, SN and VTA (Swanson, 2000; Reiner et al., 2004; Jarvis et al., 2005). Functionally, the human striato-pallidal system may be divided into the dorsal and ventral portions, which are involved in regulation of motor actions in response to cognitive activities and in processing of emotional and motivational stimuli, respectively (Heimer et al., 1982; Turner and Desmurget, 2010).

Within the descending vocal motor pathway, the laryngeal motor cortex (LMC) sends the strongest of all basal ganglia projections to the putamen, as determined using neuroanatomical tract tracing in non-human primates and diffusion tensor tractography in humans (Jurgens, 1976; Simonyan and Jurgens, 2003; Simonyan et al., 2009) (Figs. 2A and 3B,E). Cytoarchitectonically, the LMC is located in the ventral primary motor cortex in humans (area 4 of Brodmann (Brodmann, 1909) or area 4p of Geyer et al. (Geyer et al., 1996)) and in the ventral premotor cortex in non-human primates (area 6 of Brodmann (Brodmann, 1909) or area 6ba of Vogt and Vogt (Vogt and Vogt, 1919), area FCBm of von Bonin and Bailey (von Bonin and Bailey, 1947), area F5 of Matelli et al. (Matelli et al., 1985), area 6VR(F5)/ProM of Paxinos et al. (Paxinos et al., 2000), area F5(6Va/Vb) of Saleem and Logothetis (Saleem and Logothetis, 2007)) (Fig. 3A,D). Mapping studies have not been able to identify the laryngeal muscle representation in the primary motor cortex (area 4) in non-human primates (Hast et al., 1974; Jurgens, 1976; Simonyan and Jurgens, 2002; Coude et al., 2011), whereas the location of the LMC in the premotor cortex (area 6)

in humans is assumed but remains to be confirmed. The LMC region in the primary motor cortex in humans and in the premotor cortex in non-human primates are considered to be homologous, with similar anatomical connectivity but different function (for review, see (Simonyan and Horwitz, 2011)). In both humans and non-human primates, the respective LMC regions have been shown to establish strong connectivity with other cortical regions involved in vocal and orofacial motor planning and initiation, such as inferior frontal gyrus, premotor cortex, and supplementary motor area, (Fig. 2A) as well as to receive a direct auditory input from the superior temporal cortex, a proprioceptive input from the primary somatosensory and inferior parietal cortices, and a vocal gating input from the cingulate cortex, among others (Jurgens, 2002; Simonyan and Jurgens, 2002, 2005a; Simonyan et al., 2009). In this review, we will focus on LMC connections contributing to the vocal basal ganglia circuitry.

The descending LMC-striatal projections, as other motor cortical-striatal projections, are thought to be excitatory (glutamatergic) and terminate in the ventromedial portion of the dorsal striatum over its entire rostro-caudal extent, as found in non-human primates (Jurgens, 1976; Simonyan and Jurgens, 2003) (Fig. 3B). Here, the striatal LMC projections form a 'larynx' terminal field, which is segregated in the anterior dorsal putamen (i.e., putamen rostral to the anterior commissure) and overlaps with projections from the orofacial motor cortex in the posterior putamen (i.e., putamen caudal to the anterior commissure) (Kunzle, 1975; Jurgens, 1976; Simonyan and Jurgens, 2003).

The ascending striatal-LMC projections originate directly from the substantia innominata with its embedded cholinergic basal nucleus of Meynert and amygdaloid extension, as well as indirectly from the striatum via the basal ganglia-thalamic loops (Simonyan and Jurgens, 2005b) (Fig. 3C). Hence, the LMC in non-human primates and humans establishes direct connections with different functional divisions of the basal ganglia, which are engaged in higher-order cognitive processes (i.e., anterior dorsal putamen), sensorimotor control of movement coordination and execution (i.e., posterior dorsal striatum), and attention and memory processing (i.e., basal nucleus of Meynert) (Mesulam et al., 1983; Alexander et al., 1986; Richardson and DeLong, 1988; Nakano et al., 2000).

Other basal ganglia structures, such as STN, GP and SN, also participate in the basal ganglia vocal motor circuitry (Fig. 2). As has been found in non-human primates and is considered to be the case in humans, the descending LMC projections passing through the striatum project out of the telencephalon and reach the nucleus ambiguus of the brainstem (i.e., the site of laryngeal motoneurons) through the dorsolateral SNr; the latter also projects to the parvicellular reticular formation, connected directly with the nucleus ambiguus (Fig. 2A) (Jurgens, 2002). Additionally, in contrast to non-human primates, human LMC sends direct projections to the nucleus ambiguus (Kuypers, 1958; Iwatsubo et al., 1990). This direct LMC-nucleus ambiguus connection appears to be a unique feature, possibly allowing for voluntary control of complex voice production in humans, such as during speaking and singing (Jurgens, 2002; Simonyan and Horwitz, 2011).

Functionally, the exact role (or roles) of the basal ganglia system in the control of human speech is not fully understood. The putamen and the head of the caudate nucleus are hypothesized to be involved in the control of learned vocal patterns (e.g., speech and song) but not innate emotional vocalizations (e.g., monkey calls, human laughing and crying) based on the fact that striatal lesions cause dysphonia, dysarthria and other verbal aphasias in humans but have no profound effects on monkey vocalizations (Damasio et al., 1982; Jurgens et al., 1982; Cummings, 1993; Lee et al., 1996; Nadeau and Crosson, 1997; Watkins et al., 2002; Simonyan and Jurgens, 2003). A series of neuroimaging studies in humans have further demonstrated a greater involvement of the striatum in speech initiation and

production than in speech comprehension (for review, see (Price, 2010)). In addition, the putamen, together with cerebellum, has been implicated in the control of speech tempo (Hinton et al., 2004; Riecker et al., 2005; Riecker et al., 2006), while the head of the caudate nucleus was recently proposed to be involved in suppression of unintended responses (Price, 2010).

Besides the involvement of the striatum in the control of pure speech motor output, the functional importance of this region in speech control has been recently broadened by studies demonstrating its association with syntactic and semantic processing (Kotz et al., 2003; Davis and Gaskell, 2009; Price, 2010), explicit identification of linguistic aspects of emotional speech prosody (Bach et al., 2008), verbal semantic and episodic memory (Koylu et al., 2006; Ystad et al., 2010), and vocal imitation of novel speech sequences, including learning of a second language (Klein et al., 1994; Klein et al., 1995; Liu et al., 2010; Liegeois et al., 2011). Despite this recent progress, however, the question of how the putamen and caudate nucleus integrate and coordinate between all these motor and cognitive functions to contribute to the human speech controlling system remains to be elucidated.

Other basal ganglia components, such as STN and GP/SNr, have also been implicated as playing a role in the speech motor control. Recent studies have shown that the STN neuronal activity is modulated at the initiation, during the onset and following speech production (Watson and Montgomery, 2006; Hebb et al., 2011) and have suggested the STN importance in suppression of inappropriate responses or switching within semantic and phonemic sub-categories during verbal fluency tasks (Anzak et al., 2011) as well as in processing of emotional prosody (Bruck et al., 2011). The functional role of the GP/SNr remains less clear, as only a few studies have been conducted, with some suggesting a role for GP/SNr in verbal fluency and semantic processing (Wallesch et al., 1990; Murdoch, 2001; Troster et al., 2002). Given the anatomical importance of these structures in the formation of parallel descending LMC-basal ganglia-brainstem pathways, future studies exploring their functional role(s) will be critical for our complete understanding of the brain mechanisms underlying human speech control.

### **Anatomy and function of the songbird basal ganglia: Implications for vocal learning**

Similar to humans, the songbird basal ganglia consist of the striatum, pallidum, SN and STN (Fig. 1B). However, in contrast to humans, the songbird striatum consists of the lateral and medial segments, and the pallidum, SNr and STN are not considered integral components of bird song system. Instead, songbirds have a specialized song region in their dorsal striatum, called Area X, in which the majority of its medium spiny neurons (MSN) are intermingled with rare, sparsely distributed GP-like neurons. An Area X analog is present only in song learning bird lineages (i.e., songbirds, parrots and hummingbirds), but not in any other vocal non-learning birds studied to date (Kroodsma and Konishi, 1991; Feenders et al., 2008).

As it is the case with the role of the human striatum in speech control, the functional importance of Area X for bird singing is not fully understood. Due to similarities of neuroanatomical and functional properties as well as an impact of lesions on learned vocal behavior, Area X of song learning birds is considered to be analogous to human striatum. However, because songbird Area X has also an intermingling of pallidal neurons, lesions to Area X in songbirds might be more akin to a combination of striatal and pallidal lesions in humans. The dominating view assigns Area X a critical role in song learning based on studies showing that lesions to Area X impair learning of normal acoustic and syllabic sequence organization of the bird's song during early song learning phases (Scharff and Nottebohm, 1991) but have little effect on singing in adult songbirds, which have already learned their song (Kobayashi et al., 2001). However, it is important to note that lesions to Area X may lead to transient but substantial deficits in song sequencing (or production),



similar to stuttering in humans (Kobayashi et al., 2001; Kubikova et al., 2007b). Furthermore, it has been shown that Area X in adult songbirds is highly active during song production with increased neuronal firing rates and its plasticity-related gene regulation (e.g., *egr1*, *c-fos*) depending on the social context and vocal explorations (Kimpo and Doupe, 1997; Jarvis et al., 1998; Hessler and Doupe, 1999). Specifically, when a male bird produces undirected song for vocal explorations or practice, firing rates are variable from one song bout to another, plasticity-induced gene regulation is high, and the song pitch varies considerably. When the same male bird sings directly to a female bird, neuronal firing rates in Area X are significantly lower and more stereotyped, subsequent induction of plasticity related genes is much less than during undirected song, and the male bird produces significantly less variable song (Jarvis et al., 1998; Hessler and Doupe, 1999; Kao et al., 2005).

Pallial control of learned song production is performed by the song-specialized HVC nucleus (letter-based name) of the nidopallium and the robust nucleus of the arcopallium (RA) (Fig. 1B). The HVC nucleus has been hypothesized to be analogous to layer III and the RA nucleus analogous to layer V of the human LMC (Jarvis, 2004). Similar to the human LMC, the songbird RA nucleus projects directly to vocal motor neurons (nXIIts) of the brainstem (Nottebohm et al., 1976), but, unlike mammalian cortical layer V neurons, has no connections with the striatum (Jarvis, 2004). Instead, the HVC nucleus has two projection cell types, one projecting to the RA nucleus and the other projecting to striatal Area X. The latter projection is the input into the anterior forebrain pathway (AFP), i.e., pallial-basal ganglia-thalamo-pallial pathway. This loop consists of three interconnected major song nuclei: Area X projecting via pallidal-like neurons to the anterior dorsolateral medial (aDLM) and dorsal intermediate posterior (DIP) nuclei of the thalamus, which further projects to the pallial magnocellular nucleus of the anterior nidopallium (MAN), which closes the loop by projecting back to Area X. The lateral part of MAN (LMAN) sends output to the RA nucleus, and the medial part of MAN (MMAN) sends output to the HVC nucleus (Kubikova et al., 2007a). A balance between the variability generated by LMAN and possible consolidation generated by Area X has been proposed to enable vocal learning in songbirds (Scharff and Nottebohm, 1991; Jarvis, 2004). However, while behavioral studies suggest that LMAN induces variable patterns of song production in both juvenile and adult songbirds (Kao et al., 2005; Olveczky et al., 2005), recent studies in adult songbirds have shown that, unlike in juveniles, Area X is not needed to maintain a high level of stereotypy in a closed-ended learner (i.e., zebra finch) (Goldberg and Fee, 2011).

## Dopaminergic modulation of human speech and bird song control

### Anatomy of dopaminergic function with implication for human speech and bird song

The role of the basal ganglia in general and dopaminergic transmission through the nigro-striatal pathway in particular is critical for the movement control (Graybiel et al., 1994; Swanson, 2000; Redgrave et al., 2010). Similar to other motor behaviors, dopaminergic modulation of human speech production is thought to be exerted through the striatal dopamine release from the ventral portion of the SNc and the ventral tegmental area (VTA). Dopamine regulates the functional balance between the direct and indirect basal ganglia circuits. Moreover, due to direct projections from the SNc and VTA to the LMC as shown in non-human primates (Jurgens, 1982; Simonyan and Jurgens, 2005b) and to the GPi and STN as shown in non-human primates and rodents, respectively (Smith et al., 1989; Cragg et al., 2004) (Fig. 3C), it is likely that dopamine may additionally directly modulate the activity of the LMC and other components of the vocal basal ganglia circuitry during speech production (Fig. 2A). This hypothesis, however, remains to be tested.

Within the direct basal ganglia circuitry, the mammalian striatum conveys a direct input to the GPi and SNr, while giving off branching collaterals to the GPe (Albin et al., 1989; Redgrave et al., 2010) (Fig. 2A). The majority of these striato-pallidal and striatonigral projections are GABAergic (inhibitory) with some fibers also containing enkephalin, substance P and dynorphin (Parent and Hazrati, 1995). Within the indirect basal ganglia circuitry, the striatal projections first reach the GPe, which further projects directly to the GPi and indirectly, via the STN, to the SNr (Carpenter et al., 1981a; Carpenter et al., 1981b; Smith et al., 1990; Shink et al., 1996; Smith et al., 1998). The striato-GPi fibers contain GABA and substance P; the striato-GPe fibers contain GABA and enkephalin, whereas the STN-GPi and STN-SNr fibers express glutamate (Carpenter et al., 1981a; Carpenter et al., 1981b; Smith et al., 1990; Shink et al., 1996; Smith et al., 1998). Striato-pallidal and striatonigral pathways within both direct and indirect circuits send inhibitory (GABAergic) projections to the ventral lateral and centromedian (striatopallidal pathway) as well as ventral anterior and mediodorsal (striato-nigral pathway) thalamic nuclei (Carpenter et al., 1976; Ilinsky et al., 1985; Fenelon et al., 1990; Percheron, 2004), which further send an excitatory (glutamatergic) input to the cerebral cortex, including the LMC. The direct and indirect basal ganglia circuits interact with each other through the collaterals within the striatum (Yung et al., 1996) and the common connections with the GPi and SNr (Parent et al., 2000). The two circuits, however, have opposite effects on thalamic activity: while the direct pathway provides a positive feedback by increasing the activation of thalamo-cortical neurons, the indirect pathway exerts a negative feedback by reducing the thalamic activation of cortical neurons (Wilson, 2004).

In songbirds, similar direct and indirect pathways exist (Reiner et al., 2004; Doupe et al., 2005; Farries et al., 2005). Striatal neurons of Area X first project to GPi-type neurons sparsely located within Area X and then further to the vocal part of the thalamus (i.e., aDLM/DIP), thus forming a direct pathway. The GPe-type neurons within Area X also receive striatal input and further project to the same GPi-type neurons, which, in turn, project to the aDLM/DIP, thus forming an indirect pathway (Gale and Perkel, 2010; Goldberg et al., 2010). The aDLM sends an excitatory input to LMAN and RA, whereas DIP projects to MMAN.

In mammals and presumably in songbirds, the balance between the direct and indirect basal ganglia circuits is regulated through differential modulation of D<sub>1</sub>- and D<sub>2</sub>-family dopamine receptors by dopaminergic input from the SNc and VTA (Kubota et al., 1986; Gerfen, 2000; Ding and Perkel, 2002; Kubikova et al., 2010; Redgrave et al., 2010). In mammals, the D<sub>1</sub>-family receptors (including D<sub>1A</sub> and D<sub>1B</sub> (or D<sub>5</sub>)) are coupled to the G protein G<sub>αs</sub> and are preferentially expressed on the MSNs, mainly within the direct pathway, whereas the D<sub>2</sub>-family receptors (including D<sub>2</sub>, D<sub>3</sub> and D<sub>4</sub>) are coupled to the G protein G<sub>αi</sub> and are expressed mainly within the indirect pathway (Gerfen, 1992; Surmeier et al., 1998). In songbirds, preferential expression of D<sub>1</sub>- (including D<sub>1A</sub>, D<sub>1B</sub> (or D<sub>5</sub>) and D<sub>1D</sub>) and D<sub>2</sub>-family receptors (including D<sub>2</sub>, D<sub>3</sub> and D<sub>4</sub>) on the MSNs within the direct and indirect pathways, respectively, has also been proposed (Kubikova et al., 2010); however, more experiments are required to characterize their organization in birds. Because activation of the D<sub>1</sub> receptors enhances and activation of the D<sub>2</sub> suppresses the MSNs, dopamine release leads to excitation of the direct circuit and to inhibition of the indirect circuit. Collectively, dopamine released within both the direct and indirect circuits reduces the inhibition of thalamo-cortical neurons, allowing facilitation of movements initiated in the motor cortex (Alexander and Crutcher, 1990; Wichmann and DeLong, 1996; Smith et al., 1998). In turn, direct striatal projections to the SNc contain GABA and, hence inhibit the activity of the SNc in non-human primates and possibly in humans (Hedreen and DeLong, 1991; Lynd-Balta and Haber, 1994). Songbirds, however, do not appear to have a projection from the

striatum to the SNc (Gale and Perkel, 2010), indicating that such a projection may not be critical for learned sequencing of their songs.

### Functional role of dopamine in human speech

In spite of several differences between anatomical and functional organization of human speech and bird song systems, our present knowledge about dopaminergic function during normal speech production is largely based on a series of studies in songbirds and a recent report in bats. To date, investigations on the functional role(s) of dopamine (and other neurotransmitters) in human speech control have not been reported in healthy subjects. On the other hand, a few case reports of patients treated with dopamine receptor antagonists have described acute drug-induced alterations of dopaminergic transmission, which temporarily disrupted normal vocal motor control, leading to the development of uncontrolled laryngeal spasms (Newton-John, 1988; Warren and Thompson, 1998). Studies in neurological and psychiatric patients with voice and speech problems, such as Parkinson's disease (PD), stuttering, Tourette's syndrome, and schizophrenia, have further hinted at the importance of proper dopaminergic modulation of speech control.

The neuropathological hallmark of PD is a significant loss of dopaminergic neurons in the SNc, resulting in a reduction of striatal dopamine release (Hornykiewicz, 2001). Along with the main PD symptoms, such as bradykinesia, muscular rigidity, tremor and disturbances of gait and posture, nearly 90% of PD patients experience severe changes of their voice quality, characterized by monotone and hypotonic speech with limited pitch range, reduced loudness, decreased accuracy of articulation, and a raspy voice (Aronson, 1980). With the advancement of disease, more than half of non-demented patients develop additional cognitive deficits affecting speech and language, such as difficulties with phonological processing, syntactic complexity, and language comprehension (Walsh and Smith, 2011). In addition, patients with advanced Parkinson's disease occasionally develop compulsive involuntary singing and humming while receiving high-dose dopamine replacement therapy (Friedman, 1993; Bonvin et al., 2007; Kataoka and Ueno, 2010). Mechanistic aspects of dopaminergic dysfunction affecting voice and speech production in PD patients remain, however, largely unclear, while pharmacological and surgical (e.g., deep brain stimulation) treatments have mild, if any, effect on speech improvement.

Stuttering is another neurological disorder that has been linked to the alterations in dopaminergic function. It has been suggested that lateralization effects of the nigrostriatal dopamine release might represent a contributing factor in the pathophysiology of this disorder, as persons who stutter exhibit three times higher uptake of a dopamine precursor in the left but not the right caudate nucleus (Wu et al., 1997). Even though these findings stem from a single report, they provide a starting point for further investigations of dopamine lateralization effects on symptom expression in neurological patients with speech disorders.

Altered dopaminergic function has further been associated with such psychiatric voice problems as vocal tics in Tourette's syndrome and auditory verbal hallucinations in schizophrenia. Dopamine levels have been reported to be abnormally increased in Tourette's syndrome (Heinz et al., 1998; Wong et al., 2008), whereas schizophrenia symptoms have been associated with both elevated subcortical and deficient cortical dopaminergic function (Thompson et al., 2009).

Hence, the evidence from neurological and psychiatric patients explicitly indicates a central modulatory role played by dopamine in proper execution of motor commands and higher-order cognitive processing associated with speech production. Clinically, characterization of mechanistic aspects of normal and dysfunctional dopaminergic transmission would



potentially guide the identification of novel therapeutic opportunities in these patients, whose speech problems largely do not respond to currently available treatments.

### Functional role of dopamine in bird song

In songbirds, singing has been demonstrated to induce dopamine release into Area X (Sasaki et al., 2006) (Fig. 4). Importantly, the increases in striatal dopamine levels are dependent on the social context, such that higher levels of dopamine are maintained in Area X when a male bird sings directly to a female bird compared to when a male bird produces undirected song. Such high maintenance of dopamine release during directed singing appears to occur through differential activity of the dopamine re-uptake transporter in the VTA axons within Area X. Pharmacological blockade of the transporter has been shown to lead to increased levels of dopamine release during undirected singing similar to the high dopamine levels during directed singing (Sasaki et al., 2006) (Fig. 4), while unilateral damage of the VTA input to Area X has been reported to reduce a bird's production of socially directed but not undirected songs (Hara et al., 2007).

While dopamine release or pharmacological manipulations of dopamine receptors have been shown to modulate both D<sub>1</sub> and D<sub>2</sub> receptors in Area X (Ding and Perkel, 2002), activation of D<sub>1</sub> receptors has been found to have a stronger correlation with changes in song behavior (Kubikova and Kostal, 2010), triggering song variability difference in undirected versus directed singing (Leblois et al., 2010). The activation of D<sub>1</sub> receptors appears to suppress glutamatergic presynaptic input from HVC and LMAN onto Area X, similar to that found in mammalian nucleus accumbens (ventral striatum), but opposite of that found in mammalian dorsal striatum (Ding et al., 2003). Further, socially motivated singing behavior has been shown to correlate with D<sub>1</sub> but not D<sub>2</sub> receptor activation in the brainstem nuclei controlling motivation to sing (Heimovics et al., 2009). In contrast, a recent study in bats has demonstrated involvement of striatal D<sub>2</sub> but not D<sub>1</sub> receptors in modulation of their echolocation pulse acoustics (Tressler et al., 2011). Such differential involvement of D<sub>1</sub> and D<sub>2</sub> receptors in regulation of learned vocal behavior in songbirds and bats may represent vertebrate lineage differences between birds and mammals. However, it is likely that there will be some synergistic role between both receptor types, as synergetic activation of D<sub>1</sub> and D<sub>2</sub> receptors in mammals has been found to have greater modulatory enhancement of behavior than activation of either receptor type alone (Gerfen, 2000).

Based on a compilation of different proposals (Gerfen, 1992; Ding and Perkel, 2002, 2004; Kubikova et al., 2010; Leblois et al., 2010; Goldberg and Fee, 2011), we hypothesize that dopaminergic input into Area X modulates the behavioral output and subsequent gene induction in the pallial-basal-ganglia-thalamic song loop for long-term changes necessary in song behavior. A vocal learning bird develops an auditory memory of the song heard from the tutor, a so-called auditory template (Konishi, 2010). During undirected singing, the bird monitors his own song for errors to closely match it with the auditory template, while, during directed singing, bird sings an already perfected song to attract a female (Jarvis et al., 1998; Woolley and Doupe, 2008). When, during undirected singing, a match occurs to the song heard, the low levels of dopamine release would preferentially activate the Area X's D<sub>1</sub> receptors or possibly synergistically activate D<sub>1</sub> and D<sub>2</sub> receptors. These would then enhance or suppress the glutamatergic input from LMAN and HVC. On the other hand, during directed singing, higher levels of dopamine release would preferentially activate D<sub>2</sub> receptors and weaken the input from LMAN and HVC (Kubikova et al., 2010). These opposite changes in synaptic and behavioral plasticity may be due to the opposing effects of dopamine on D<sub>1</sub> and D<sub>2</sub> receptors, as shown in mammals (Gerfen, 2000). Validating this hypothesis requires testing whether dopamine levels during singing are different when the produced song matches the tutor song more closely than when there is a poor match. It will also require manipulating dopamine and their receptor levels during song learning or

modification and testing whether controlling dopamine can experimentally influence how well the song is copied.

## Summary

Human speech and bird song appear to share some similar features, although several differences also exist. Most importantly, both species are capable of learning new utterances for speech and song production, respectively, in addition to production of genetically pre-programmed, innate vocalizations. Although the songbird pallium consists of groups of nuclei instead of mammalian cortical layers, some similarities in the organization of vocal neural pathways in general and basal ganglia-thalamo-cortical loops in particular exist between songbirds and humans. Within the parallel direct and indirect basal ganglia circuits, dopaminergic function appears to be critical for modulation of the neural activity of striato-thalamo-cortical circuits for complex goal-directed or context-dependent changes in speech and song output.

On the other hand, differences in the underlying mechanisms of dopaminergic influences on human speech and bird song should be acknowledged. While dopaminergic modulation of bird singing has been shown to have larger effects through the striatal D<sub>1</sub> receptors than through the D<sub>2</sub> receptors in songbirds, a more complex human speech appears to be regulated through the modulation of activity of both receptor types. More detailed investigations are required to determine the potential role of D<sub>2</sub> receptors in bird song production as well as to identify the exact role(s) of both D<sub>1</sub> and D<sub>2</sub> receptors in normal and disordered human speech and language control.

Thus, due to similarities with humans in the ability to produce learned vocalizations, songbirds present a potentially useful model to study some shared mechanisms of dopaminergic transmission underlying speech and song production. However, as humans possess several unique features of speech control, human dopaminergic regulation may need to be studied in humans only. Some of these studies, however, may be challenging in humans and may depend on the development of innovative methods due to the invasive nature of the experimental approaches used to reveal the dopaminergic function in songbirds.

## Acknowledgments

This work was supported by the National Institute on Deafness and Other Communication Disorders, National Institutes of Health (DC009620 to K.S., Intramural Program to B. H.), the Howard Hughes Medical Institute and the National Institute of Mental Health (MH62083 to E.D.J.).

## Abbreviations

<b>AFP</b>	anterior forebrain pathway
<b>aDLM</b>	anterior dorsolateral medial nucleus of the thalamus
<b>DIP</b>	dorsointermedius posterior nucleus of the thalamus
<b>GABA</b>	gamma-aminobutyric acid
<b>GPI</b>	globus pallidus, internal segment
<b>GPe</b>	globus pallidus, external segment
<b>HVC nucleus of the nidopallium</b>	letter-based name

<b>LMC</b>	laryngeal motor cortex
<b>LMAN</b>	lateral part of magnocellular nucleus of the anterior nidopallium
<b>MAN</b>	magnocellular nucleus of the anterior nidopallium
<b>MMAN</b>	medial part of magnocellular nucleus of the anterior nidopallium
<b>MSN</b>	medium spiny neuron
<b>PD</b>	Parkinson's disease
<b>RA</b>	robust nucleus of the arcopallium
<b>SNc</b>	substantia nigra, pars compacta
<b>SNr</b>	substantia nigra, part reticulata
<b>STN</b>	subthalamic nucleus
<b>VTA</b>	ventral tegmental area

## References

- Albin RL, Young AB, Penney JB. The functional anatomy of basal ganglia disorders. *Trends Neurosci.* 1989; 12:366–375. [PubMed: 2479133]
- Alexander GE, Crutcher MD. Functional architecture of basal ganglia circuits: neural substrates of parallel processing. *Trends Neurosci.* 1990; 13:266–271. [PubMed: 1695401]
- Alexander GE, DeLong MR, Strick PL. Parallel organization of functionally segregated circuits linking basal ganglia and cortex. *Annu Rev Neurosci.* 1986; 9:357–381. [PubMed: 3085570]
- Anzak A, Gaynor L, Beigi M, Limousin P, Hariz M, Zrinzo L, Foltynie T, Brown P, Jahanshahi M. A gamma band specific role of the subthalamic nucleus in switching during verbal fluency tasks in Parkinson's disease. *Experimental neurology.* 2011; 232:136–142. [PubMed: 21872587]
- Aronson, AE. An interdisciplinary approach. Thieme; Stuttgart: 1980. *Clinical voice disorders.*
- Bach DR, Grandjean D, Sander D, Herdener M, Strik WK, Seifritz E. The effect of appraisal level on processing of emotional prosody in meaningless speech. *Neuroimage.* 2008; 42:919–927. [PubMed: 18586524]
- Bonvin C, Horvath J, Christe B, Landis T, Burkhard PR. Compulsive singing: another aspect of punning in Parkinson's disease. *Ann Neurol.* 2007; 62:525–528. [PubMed: 17696122]
- Brodmann, K. *Vergleichende Lokalisationslehre der Grosshirnrinde.* Barth; Leipzig: 1909.
- Bruck C, Wildgruber D, Kreifelts B, Kruger R, Wachter T. Effects of subthalamic nucleus stimulation on emotional prosody comprehension in Parkinson's disease. *PLoS One.* 2011; 6:e19140. [PubMed: 21552518]
- Carpenter MB, Nakano K, Kim R. Nigrothalamic projections in the monkey demonstrated by autoradiographic technics. *The Journal of comparative neurology.* 1976; 165:401–415. [PubMed: 57125]
- Carpenter MB, Batton RR 3rd, Carleton SC, Keller JT. Interconnections and organization of pallidal and subthalamic nucleus neurons in the monkey. *J Comp Neurol.* 1981a; 197:579–603. [PubMed: 7229129]
- Carpenter MB, Carleton SC, Keller JT, Conte P. Connections of the subthalamic nucleus in the monkey. *Brain Res.* 1981b; 224:1–29. [PubMed: 7284825]
- Catchpole, CK.; Slater, PJB. *Bird song: Biological Themes and Variations.* 2nd edition. Cambridge University Press; 2008. Edition
- Coude G, Ferrari PF, Roda F, Maranesi M, Borelli E, Veroni V, Monti F, Rozzi S, Fogassi L. Neurons controlling voluntary vocalization in the macaque ventral premotor cortex. *PLoS One.* 2011; 6:e26822. [PubMed: 22073201]

- Cragg SJ, Baufreton J, Xue Y, Bolam JP, Bevan MD. Synaptic release of dopamine in the subthalamic nucleus. *The European journal of neuroscience*. 2004; 20:1788–1802. [PubMed: 15380000]
- Cummings JL. Frontal-subcortical circuits and human behavior. *Archives of Neurology*. 1993; 50:873–880. [PubMed: 8352676]
- Damasio AR, Damasio H, Rizzo M, Varney N, Gersh F. Aphasia with nonhemorrhagic lesions in the basal ganglia and internal capsule. *Archives of Neurology*. 1982; 39:15–24. [PubMed: 7055442]
- Davis MH, Gaskell MG. A complementary systems account of word learning: neural and behavioural evidence. *Philos Trans R Soc Lond B Biol Sci*. 2009; 364:3773–3800. [PubMed: 19933145]
- Ding L, Perkel DJ. Dopamine modulates excitability of spiny neurons in the avian basal ganglia. *J Neurosci*. 2002; 22:5210–5218. [PubMed: 12077216]
- Ding L, Perkel DJ. Long-term potentiation in an avian basal ganglia nucleus essential for vocal learning. *J Neurosci*. 2004; 24:488–494. [PubMed: 14724247]
- Ding L, Perkel DJ, Farries MA. Presynaptic depression of glutamatergic synaptic transmission by D1-like dopamine receptor activation in the avian basal ganglia. *The Journal of neuroscience : the official journal of the Society for Neuroscience*. 2003; 23:6086–6095. [PubMed: 12853427]
- Doupe AJ, Kuhl PK. Birdsong and human speech: common themes and mechanisms. *Annual review of neuroscience*. 1999; 22:567–631.
- Doupe AJ, Perkel DJ, Reiner A, Stern EA. Birdbrains could teach basal ganglia research a new song. *Trends in neurosciences*. 2005; 28:353–363. [PubMed: 15935486]
- Egnor SE, Hauser MD. A paradox in the evolution of primate vocal learning. *Trends Neurosci*. 2004; 27:649–654. [PubMed: 15474164]
- Farries MA, Ding L, Perkel DJ. Evidence for “direct” and “indirect” pathways through the song system basal ganglia. *J Comp Neurol*. 2005; 484:93–104. [PubMed: 15717304]
- Feenders G, Liedvogel M, Rivas M, Zapka M, Horita H, Hara E, Wada K, Mouritsen H, Jarvis ED. Molecular mapping of movement-associated areas in the avian brain: a motor theory for vocal learning origin. *PLoS One*. 2008; 3:e1768. [PubMed: 18335043]
- Fenelon G, Francois C, Percheron G, Yelnik J. Topographic distribution of pallidal neurons projecting to the thalamus in macaques. *Brain research*. 1990; 520:27–35. [PubMed: 1698504]
- Friedman JH. Involuntary humming in autopsy-proven Parkinson's disease. *Mov Disord*. 1993; 8:401. [PubMed: 8341315]
- Gale SD, Perkel DJ. Anatomy of a songbird basal ganglia circuit essential for vocal learning and plasticity. *J Chem Neuroanat*. 2010; 39:124–131. [PubMed: 19596062]
- Gerfen CR. The neostriatal mosaic: multiple levels of compartmental organization in the basal ganglia. *Annu Rev Neurosci*. 1992; 15:285–320. [PubMed: 1575444]
- Gerfen CR. Molecular effects of dopamine on striatal-projection pathways. *Trends in neurosciences*. 2000; 23:S64–70. [PubMed: 11052222]
- Geyer S, Ledberg A, Schleicher A, Kinomura S, Schormann T, Burgel U, Klingberg T, Larsson J, Zilles K, Roland PE. Two different areas within the primary motor cortex of man. *Nature*. 1996; 382:805–807. [PubMed: 8752272]
- Goldberg JH, Fee MS. Vocal babbling in songbirds requires the basal ganglia-recipient motor thalamus but not the basal ganglia. *Journal of neurophysiology*. 2011; 105:2729–2739. [PubMed: 21430276]
- Goldberg JH, Adler A, Bergman H, Fee MS. Singing-related neural activity distinguishes two putative pallidal cell types in the songbird basal ganglia: comparison to the primate internal and external pallidal segments. *J Neurosci*. 2010; 30:7088–7098. [PubMed: 20484651]
- Graybiel AM, Aosaki T, Flaherty AW, Kimura M. The basal ganglia and adaptive motor control. *Science*. 1994; 265:1826–1831. [PubMed: 8091209]
- Hara E, Kubikova L, Hessler NA, Jarvis ED. Role of the midbrain dopaminergic system in modulation of vocal brain activation by social context. *Eur J Neurosci*. 2007; 25:3406–3416. [PubMed: 17553009]
- Hast MH, Fischer JM, Wetzel AB, Thompson VE. Cortical motor representation of the laryngeal muscles in *Macaca mulatta*. *Brain Res*. 1974; 73:229–240. [PubMed: 4208647]

- Hebb O, Darvas F, Miller KJ. Transient and state modulation of beta power in human subthalamic nucleus during speech production and finger movement. *Neuroscience*. 2011
- Hedreen JC, DeLong MR. Organization of striatopallidal, striatonigral, and nigrostriatal projections in the macaque. *The Journal of comparative neurology*. 1991; 304:569–595. [PubMed: 2013650]
- Heimer L, Switzer RD, Van Hoesen GW. Ventral Striatum and Ventral Pallidum –Components of the Motor System. *Trends in Neurosciences*. 1982; 5:83–87.
- Heimovics SA, Cornil CA, Ball GF, Ritters LV. D1-like dopamine receptor density in nuclei involved in social behavior correlates with song in a context-dependent fashion in male European starlings. *Neuroscience*. 2009; 159:962–973. [PubMed: 19356680]
- Heinz A, Knable MB, Wolf SS, Jones DW, Gorey JG, Hyde TM, Weinberger DR. Tourette's syndrome: [I-123]beta-CIT SPECT correlates of vocal tic severity. *Neurology*. 1998; 51:1069–1074. [PubMed: 9781531]
- Hessler NA, Doupe AJ. Social context modulates singing-related neural activity in the songbird forebrain. *Nature Neuroscience*. 1999; 2:209–211.
- Hinton SC, Harrington DL, Binder JR, Durgerian S, Rao SM. Neural systems supporting timing and chronometric counting: an fMRI study. *Brain Res Cogn Brain Res*. 2004; 21:183–192. [PubMed: 15464350]
- Hornykiewicz O. Chemical neuroanatomy of the basal ganglia--normal and in Parkinson's disease. *Journal of chemical neuroanatomy*. 2001; 22:3–12. [PubMed: 11470551]
- Illinsky IA, Jouandet ML, Goldman-Rakic PS. Organization of the nigrothalamocortical system in the rhesus monkey. *The Journal of comparative neurology*. 1985; 236:315–330. [PubMed: 4056098]
- Iwatsubo T, Kuzuhara S, Kanemitsu A, Shimada H, Toyokura Y. Corticofugal projections to the motor nuclei of the brainstem and spinal cord in humans. *Neurology*. 1990; 40:309–312. [PubMed: 2300253]
- Janik VM, Slater PJB. Vocal learning in mammals. *Advances in the study of behavior*. 1997; 26:59–99.
- Jarvis ED. Learned birdsong and the neurobiology of human language. *Ann N Y Acad Sci*. 2004; 1016:749–777. [PubMed: 15313804]
- Jarvis ED, Scharff C, Grossman MR, Ramos JA, Nottebohm F. For whom the bird sings: context-dependent gene expression. *Neuron*. 1998; 21:775–788. [PubMed: 9808464]
- Jarvis ED, et al. Avian brains and a new understanding of vertebrate brain evolution. *Nature reviews Neuroscience*. 2005; 6:151–159.
- Jurgens U. Projections from the cortical larynx area in the squirrel monkey. *Exp Brain Res*. 1976; 25:401–411. [PubMed: 821768]
- Jurgens U. Afferents to the cortical larynx area in the monkey. *Brain Res*. 1982; 239:377–389. [PubMed: 7093697]
- Jurgens U. Neural pathways underlying vocal control. *Neurosci Biobehav Rev*. 2002; 26:235–258. [PubMed: 11856561]
- Jurgens U, Kirzinger A, von Cramon D. The effects of deep-reaching lesions in the cortical face area on phonation. A combined case report and experimental monkey study. *Cortex*. 1982; 18:125–139. [PubMed: 7187629]
- Kao MH, Doupe AJ, Brainard MS. Contributions of an avian basal gangliaforebrain circuit to real-time modulation of song. *Nature*. 2005; 433:638–643. [PubMed: 15703748]
- Kataoka H, Ueno S. Compulsive singing associated with a dopamine agonist in Parkinson disease. *Cogn Behav Neurol*. 2010; 23:140–141. [PubMed: 20535065]
- Kimpo RR, Doupe AJ. FOS is induced by singing in distinct neuronal populations in a motor network. *Neuron*. 1997; 18:315–325. [PubMed: 9052801]
- Klein D, Zatorre RJ, Milner B, Meyer E, Evans AC. Left putaminal activation when speaking a second language: evidence from PET. *Neuroreport*. 1994; 5:2295–2297. [PubMed: 7881049]
- Klein D, Milner B, Zatorre RJ, Meyer E, Evans AC. The neural substrates underlying word generation: a bilingual functional-imaging study. *Proceedings of the National Academy of Sciences of the United States of America*. 1995; 92:2899–2903. [PubMed: 7708745]

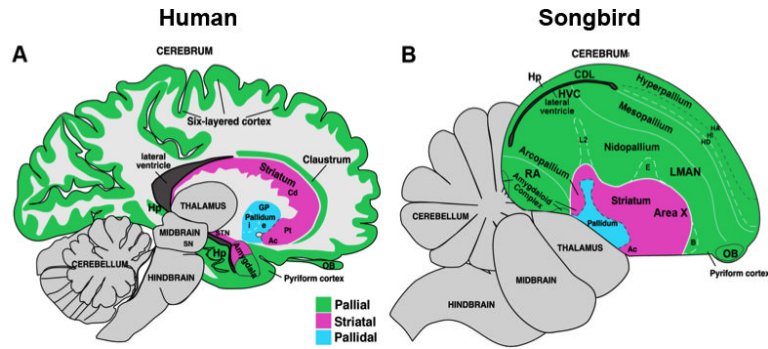


- Kobayashi K, Uno H, Okanoya K. Partial lesions in the anterior forebrain pathway affect song production in adult Bengalese finches. *Neuroreport*. 2001; 12:353–358. [PubMed: 11209949]
- Konishi M. From central pattern generator to sensory template in the evolution of birdsong. *Brain and language*. 2010; 115:18–20. [PubMed: 20955898]
- Kotz SA, Frisch S, von Cramon DY, Friederici AD. Syntactic language processing: ERP lesion data on the role of the basal ganglia. *Journal of the International Neuropsychological Society : JINS*. 2003; 9:1053–1060. [PubMed: 14738286]
- Koylu B, Trinka E, Ischebeck A, Visani P, Trieb T, Kremser C, Bartha L, Schocke M, Benke T. Neural correlates of verbal semantic memory in patients with temporal lobe epilepsy. *Epilepsy Res*. 2006; 72:178–191. [PubMed: 16996717]
- Kroodsma DE, Konishi M. A subsong bird (eastern phoebe, *Sayornis phoebe*) develops normal song without auditory feedback. *Animal Behaviour*. 1991; 42:477–487.
- Kubikova L, Kostal L. Dopaminergic system in birdsong learning and maintenance. *Journal of chemical neuroanatomy*. 2010; 39:112–123. [PubMed: 19900537]
- Kubikova L, Turner EA, Jarvis ED. The pallial basal ganglia pathway modulates the behaviorally driven gene expression of the motor pathway. *Eur J Neurosci*. 2007a; 25:2145–2160. [PubMed: 17419760]
- Kubikova L, Wada K, Jarvis ED. Dopamine receptors in a songbird brain. *The Journal of comparative neurology*. 2010; 518:741–769. [PubMed: 20058221]
- Kubikova, L.; Turner, EA.; Scarff, C.; Jarvis, ED. A predisposition to stutter and its recovery following basal ganglia damage.. Annual Meeting of the Society for Neuroscience; San Diego, CA. 2007b.
- Kubota Y, Inagaki S, Kito S. Innervation of substance P neurons by catecholaminergic terminals in the neostriatum. *Brain Res*. 1986; 375:163–167. [PubMed: 2424566]
- Kunzle H. Bilateral projections from precentral motor cortex to the putamen and other parts of the basal ganglia. An autoradiographic study in *Macaca fascicularis*. *Brain Res*. 1975; 88:195–209. [PubMed: 50112]
- Kuypers HGJM. Corticobulbar connexions to the pons and lower brain-stem in man. *Brain*. 1958; 81:364–388. [PubMed: 13596471]
- Leblois A, Wendel BJ, Perkel DJ. Striatal dopamine modulates basal ganglia output and regulates social context-dependent behavioral variability through D1 receptors. *J Neurosci*. 2010; 30:5730–5743. [PubMed: 20410125]
- Lee MS, Lee SB, Kim WC. Spasmodic dysphonia associated with a left ventrolateral putaminal lesion. *Neurology*. 1996; 47:827–828. [PubMed: 8797490]
- Liegeois F, Morgan AT, Connelly A, Vargha-Khadem F. Endophenotypes of FOXP2: Dysfunction within the human articulatory network. *Eur J Paediatr Neurol*. 2011
- Liu H, Hu Z, Guo T, Peng D. Speaking words in two languages with one brain: neural overlap and dissociation. *Brain research*. 2010; 1316:75–82. [PubMed: 20026317]
- Lynd-Balta E, Haber SN. Primate striatonigral projections: a comparison of the sensorimotor-related striatum and the ventral striatum. *The Journal of comparative neurology*. 1994; 345:562–578. [PubMed: 7962700]
- Matelli M, Luppino G, Rizzolatti G. Patterns of cytochrome oxidase activity in the frontal agranular cortex of the macaque monkey. *Behav Brain Res*. 1985; 18:125–136. [PubMed: 3006721]
- Mesulam MM, Mufson EJ, Levey AI, Wainer BH. Cholinergic innervation of cortex by the basal forebrain: cytochemistry and cortical connections of the septal area, diagonal band nuclei, nucleus basalis (substantia innominata), and hypothalamus in the rhesus monkey. *The Journal of comparative neurology*. 1983; 214:170–197. [PubMed: 6841683]
- Murdoch BE. Subcortical brain mechanisms in speech and language. *Folia phoniatrica et logopaedica : official organ of the International Association of Logopedics and Phoniatrics*. 2001; 53:233–251.
- Nadeau SE, Crosson B. Subcortical aphasia. *Brain Lang*. 1997; 58:355–402. discussion 418-323. [PubMed: 9222518]
- Nakano K, Kayahara T, Tsutsumi T, Ushiro H. Neural circuits and functional organization of the striatum. *J Neurol* 247 Suppl. 2000; 5:V1–15.

- Newton-John H. Acute upper airway obstruction due to supraglottic dystonia induced by a neuroleptic. *Bmj*. 1988; 297:964–965. [PubMed: 3142568]
- Nottebohm F, Stokes TM, Leonard CM. Central control of song in the canary, *Serinus canarius*. *Journal of Comparative Neurology*. 1976; 165:457–486. [PubMed: 1262540]
- Olveczky BP, Andalman AS, Fee MS. Vocal experimentation in the juvenile songbird requires a basal ganglia circuit. *PLoS Biol*. 2005; 3:e153. [PubMed: 15826219]
- Parent A, Hazrati LN. Functional anatomy of the basal ganglia. I. The cortico-basal ganglia-thalamo-cortical loop. *Brain Res Brain Res Rev*. 1995; 20:91–127. [PubMed: 7711769]
- Parent A, Sato F, Wu Y, Gauthier J, Levesque M, Parent M. Organization of the basal ganglia: the importance of axonal collateralization. *Trends Neurosci*. 2000; 23:S20–27. [PubMed: 11052216]
- Paxinos, G.; Huang, X-F.; Toga, AW. The rhesus monkey brain in stereotaxin coordinates. Academic Press; New York: 2000.
- Percheron, G. Thalamus.. In: Paxinos, G.; Mai, JK., editors. The human nervous system. Elsevier; Amsterdam: 2004. p. 592-675.
- Poole JH, Tyack PL, Stoeger-Horwath AS, Watwood S. Animal behaviour: Elephants are capable of vocal learning. *Nature*. 2005; 434:455–456. [PubMed: 15791244]
- Price CJ. The anatomy of language: a review of 100 fMRI studies published in 2009. *Ann N Y Acad Sci*. 2010; 1191:62–88. [PubMed: 20392276]
- Redgrave P, Rodriguez M, Smith Y, Rodriguez-Oroz MC, Lehericy S, Bergman H, Agid Y, DeLong MR, Obeso JA. Goal-directed and habitual control in the basal ganglia: implications for Parkinson's disease. *Nat Rev Neurosci*. 2010; 11:760–772. [PubMed: 20944662]
- Reiner A, Perkel DJ, Mello CV, Jarvis ED. Songbirds and the revised avian brain nomenclature. *Annals of the New York Academy of Sciences*. 2004; 1016:77–108. [PubMed: 15313771]
- Richardson RT, DeLong MR. A reappraisal of the functions of the nucleus basalis of Meynert. *Trends in neurosciences*. 1988; 11:264–267. [PubMed: 2465623]
- Riecker A, Kassubek J, Groschel K, Grodd W, Ackermann H. The cerebral control of speech tempo: opposite relationship between speaking rate and BOLD signal changes at striatal and cerebellar structures. *Neuroimage*. 2006; 29:46–53. [PubMed: 16085428]
- Riecker A, Mathiak K, Wildgruber D, Erb M, Hertrich I, Grodd W, Ackermann H. fMRI reveals two distinct cerebral networks subserving speech motor control. *Neurology*. 2005; 64:700–706. [PubMed: 15728295]
- Saleem, KS.; Logothetis, NK. A comparative MRI and histology atlas of the rhesus monkey brain in stereotaxic coordinates. First edition. Academic Press; 2007. Edition
- Sasaki A, Sotnikova TD, Gainetdinov RR, Jarvis ED. Social context-dependent singing-regulated dopamine. *J Neurosci*. 2006; 26:9010–9014. [PubMed: 16943558]
- Scharff C, Nottebohm F. A comparative study of the behavioral deficits following lesions of various parts of the zebra finch song system: implications for vocal learning. *Journal of Neuroscience*. 1991; 11:2896–2913. [PubMed: 1880555]
- Shink E, Bevan MD, Bolam JP, Smith Y. The subthalamic nucleus and the external pallidum: two tightly interconnected structures that control the output of the basal ganglia in the monkey. *Neuroscience*. 1996; 73:335–357. [PubMed: 8783253]
- Simonyan K, Jurgens U. Cortico-cortical projections of the motorcortical larynx area in the rhesus monkey. *Brain Res*. 2002; 949:23–31. [PubMed: 12213296]
- Simonyan K, Jurgens U. Efferent subcortical projections of the laryngeal motorcortex in the rhesus monkey. *Brain Res*. 2003; 974:43–59. [PubMed: 12742623]
- Simonyan K, Jurgens U. Afferent cortical connections of the motor cortical larynx area in the rhesus monkey. *Neuroscience*. 2005a; 130:133–149. [PubMed: 15561431]
- Simonyan K, Jurgens U. Afferent subcortical connections into the motor cortical larynx area in the rhesus monkey. *Neuroscience*. 2005b; 130:119–131. [PubMed: 15561430]
- Simonyan K, Horwitz B. Laryngeal motor cortex and control of speech in humans. *Neuroscientist*. 2011; 17:197–208. [PubMed: 21362688]

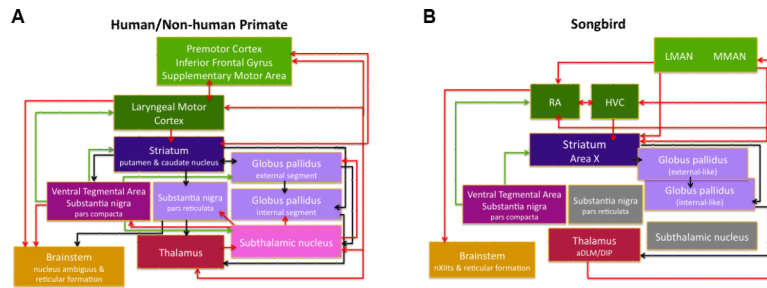
- Simonyan K, Ostuni J, Ludlow CL, Horwitz B. Functional but not structural networks of the human laryngeal motor cortex show left hemispheric lateralization during syllable but not breathing production. *J Neurosci*. 2009; 29:14912–14923. [PubMed: 19940187]
- Smith Y, Hazrati LN, Parent A. Efferent projections of the subthalamic nucleus in the squirrel monkey as studied by the PHA-L anterograde tracing method. *J Comp Neurol*. 1990; 294:306–323. [PubMed: 2332533]
- Smith Y, Lavoie B, Dumas J, Parent A. Evidence for a distinct nigropallidal dopaminergic projection in the squirrel monkey. *Brain research*. 1989; 482:381–386. [PubMed: 2565144]
- Smith Y, Bevan MD, Shink E, Bolam JP. Microcircuitry of the direct and indirect pathways of the basal ganglia. *Neuroscience*. 1998; 86:353–387. [PubMed: 9881853]
- Surmeier DJ, Yan Z, Song WJ. Coordinated expression of dopamine receptors in neostriatal medium spiny neurons. *Adv Pharmacol*. 1998; 42:1020–1023. [PubMed: 9328072]
- Swanson LW. Cerebral hemisphere regulation of motivated behavior. *Brain research*. 2000; 886:113–164. [PubMed: 11119693]
- Thompson JL, Urban N, Abi-Dargham A. How have developments in molecular imaging techniques furthered schizophrenia research? *Imaging Med*. 2009; 1:135–153. [PubMed: 21243081]
- Tressler J, Schwartz C, Wellman P, Hughes S, Smotherman M. Regulation of bat echolocation pulse acoustics by striatal dopamine. *J Exp Biol*. 2011; 214:3238–3247. [PubMed: 21900471]
- Troster AI, Woods SP, Fields JA, Hanisch C, Beatty WW. Declines in switching underlie verbal fluency changes after unilateral pallidal surgery in Parkinson's disease. *Brain and cognition*. 2002; 50:207–217. [PubMed: 12464190]
- Turner RS, Desmurget M. Basal ganglia contributions to motor control: a vigorous tutor. *Current opinion in neurobiology*. 2010; 20:704–716. [PubMed: 20850966]
- Vogt C, Vogt O. Allgemeinere Ergebnisse unserer Hirnforschung. *J Psychol Neurol*. 1919; 25:279–462.
- von Bonin, G.; Bailey, P. *The neocortex of Macaca mulatta*. University of Illinois Press; Urbana/Illinois: 1947.
- Wallesch CW, Karnath HO, Papagno C, Zimmermann P, Deuschl G, Lucking CH. Parkinson's disease patient's behaviour in a covered maze learning task. *Neuropsychologia*. 1990; 28:839–849. [PubMed: 2247210]
- Walsh B, Smith A. Linguistic complexity, speech production, and comprehension in Parkinson's disease: behavioral and physiological indices. *J Speech Lang Hear Res*. 2011; 54:787–802. [PubMed: 21060141]
- Warren J, Thompson P. Drug-induced supraglottic dystonia and spasmodic dysphonia. *Mov Disord*. 1998; 13:978–979. [PubMed: 9827629]
- Watkins KE, Dronkers NF, Vargha-Khadem F. Behavioural analysis of an inherited speech and language disorder: comparison with acquired aphasia. *Brain : a journal of neurology*. 2002; 125:452–464. [PubMed: 11872604]
- Watson P, Montgomery EB Jr. The relationship of neuronal activity within the sensori-motor region of the subthalamic nucleus to speech. *Brain and Language*. 2006; 97:233–240. [PubMed: 16445972]
- Wichmann T, DeLong MR. Functional and pathophysiological models of the basal ganglia. *Curr Opin Neurobiol*. 1996; 6:751–758. [PubMed: 9000030]
- Wilson, CJ. Basal ganglia.. In: Shepherd, GM., editor. *The synaptic organization of the brain*. 4th Edition. Oxford University Press; Oxford: 2004. p. 361–413.
- Wong DF, Brasic JR, Singer HS, Schretlen DJ, Kuwabara H, Zhou Y, Nandi A, Maris MA, Alexander M, Ye W, Rousset O, Kumar A, Szabo Z, Gjedde A, Grace AA. Mechanisms of dopaminergic and serotonergic neurotransmission in Tourette syndrome: clues from an in vivo neurochemistry study with PET. *Neuropsychopharmacology : official publication of the American College of Neuropsychopharmacology*. 2008; 33:1239–1251. [PubMed: 17987065]
- Woolley SC, Doupe AJ. Social context-induced song variation affects female behavior and gene expression. *PLoS biology*. 2008; 6:e62. [PubMed: 18351801]
- Wu JC, Maguire G, Riley G, Lee A, Keator D, Tang C, Fallon J, Najafi A. Increased dopamine activity associated with stuttering. *Neuroreport*. 1997; 8:767–770. [PubMed: 9106763]

- Ystad M, Eichele T, Lundervold AJ, Lundervold A. Subcortical functional connectivity and verbal episodic memory in healthy elderly--a resting state fMRI study. *Neuroimage*. 2010; 52:379–388. [PubMed: 20350608]
- Yung KK, Smith AD, Levey AI, Bolam JP. Synaptic connections between spiny neurons of the direct and indirect pathways in the neostriatum of the rat: evidence from dopamine receptor and neuropeptide immunostaining. *Eur J Neurosci*. 1996; 8:861–869. [PubMed: 8743734]

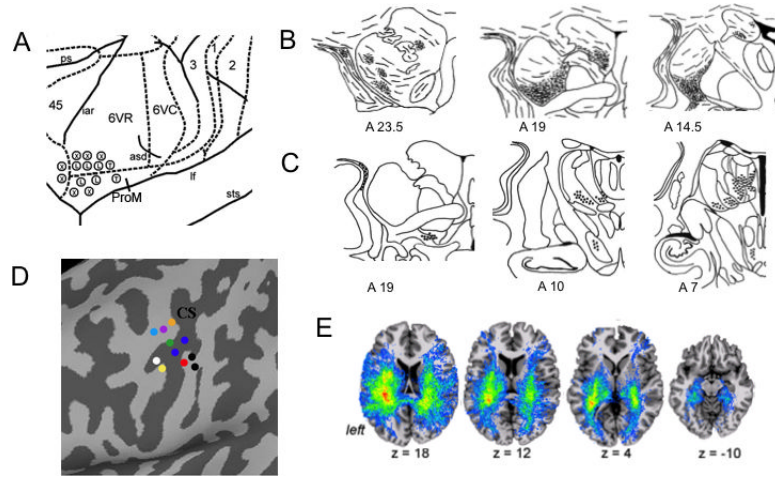


**Figure 1.** Comparative anatomy of human (A) and songbird (B) brain organization with the emphasis on the basal ganglia structures. Ac - accumbens; B - nucleus basalis; Cd -caudate nucleus; CDL - dorsal lateral corticoid area; E - ectostriatum; GP - globus pallidus (i - internal segment; e - external segment); HA - hyperstriatum accessorium; Hp - hippocampus; HV - hyperstriatum ventrale; HVC – HVC nucleus; IHA - interstitial hyperstriatum accessorium; L2 - field L2; LMAN – lateral magnocellular nucleus of anterior nidopallium; OB - olfactory bulb; Pt - putamen; RA – robust nucleus of arcopallium; SN – substantia nigra; STN – subthalamic nucleus. Modified and reprinted by permission from Macmillan Publishers Ltd: Jarvis et al., Nature Reviews Neuroscience, 2005.

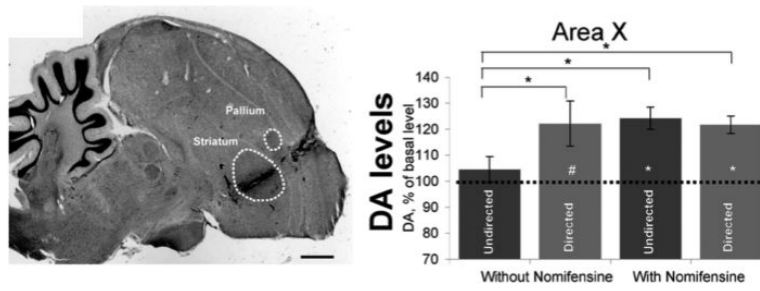




**Figure 2.** Block diagrams of basal ganglia networks related to control of production of human speech (A) and bird singing (B). Individual brain regions are represented in each block; red arrows indicate excitatory (glutamatergic) projections; black arrows indicate inhibitory (GABAergic projections); green arrows indicate dopaminergic input. In (A), the projection from the LMC to the nucleus ambiguus has been described in humans only. In (B), the vocal pallidum is represented within Area X; the subthalamic nucleus and substantia nigra pars reticulata are not considered integral components of bird song system. LMAN – lateral magnocellular nucleus of anterior nidopallium; MMAN – medial magnocellular nucleus of anterior nidopallium; RA – robust nucleus of arcopallium; aDLM – anterior part of the dorsal lateral nucleus of mediodorsal thalamus; DIP -dorsointermedius posterior nucleus of the thalamus.



**Figure 3.** Projections of the LMC to and from the basal ganglia. (A) depicts a lateral view of the rhesus monkey brain with the regions indicating the laryngeal motor cortex (encircled L for larynx); (B) shows projections from the LMC to the putamen and caudate nucleus in the rhesus monkey; (C) shows projections from the limbic striatum, substantia nigra, and ventral tegmental area to the LMC in the rhesus monkey; (D) depicts LMC in humans with multi-color dots indicating the peaks of activation as described in functional MRI studies of voice and speech production; (E) depicts connections between the LMC and basal ganglia in humans with red showing the strongest connectivity and blue showing the weakest connectivity between the brain regions. Cd – caudate nucleus; Pt – putamen; SI – substantia innominata; SN – substantia nigra; VTA – ventral tegmental area. Modified and reprinted with permissions from Elsevier, SAGE Publications Ltd, and the Journal of Neuroscience. Simonyan and Jurgens, 2003, 2005; Simonyan et al., 2005; Simonyan and Horwitz, 2011.



**Figure 4.** Dopamine release to the songbird striatum during singing. Photograph of the sagittal section of the songbird brain showing the placement of the microdialysis probe track in Area X of the striatum. The bar graph depicts the extracellular dopamine levels in Area X during undirected and directed singing without and with dopamine reuptake transporter blocker, nomifensine. Reprinted with permission from publisher. Modified and reprinted with permission from the Journal of Neuroscience, Sasaki et al., 2006.