

# Circulating Preproinsulin Signal Peptide–Specific CD8 T Cells Restricted by the Susceptibility Molecule HLA-A24 Are Expanded at Onset of Type 1 Diabetes and Kill $\beta$ -Cells

Deborah Kronenberg,<sup>1,2</sup> Robin R. Knight,<sup>2</sup> Megan Estorninho,<sup>2</sup> Richard J. Ellis,<sup>2</sup> Michel G. Kester,<sup>3</sup> Arnoud de Ru,<sup>4</sup> Martin Eichmann,<sup>2</sup> Guo C. Huang,<sup>5</sup> Jake Powrie,<sup>1,6</sup> Colin M. Dayan,<sup>7</sup> Ania Skowera,<sup>1,2</sup> Peter A. van Veelen,<sup>4</sup> and Mark Peakman<sup>1,2</sup>

Type 1 diabetes results from T cell–mediated  $\beta$ -cell destruction. The *HLA-A\*24* class I gene confers significant risk of disease and early onset. We tested the hypothesis that HLA-A24 molecules on islet cells present preproinsulin (PPI) peptide epitopes to CD8 cytotoxic T cells (CTLs). Surrogate  $\beta$ -cell lines secreting proinsulin and expressing HLA-A24 were generated and their peptide ligandome examined by mass spectrometry to discover naturally processed and HLA-A24–presented PPI epitopes. A novel PPI epitope was identified and used to generate HLA-A24 tetramers and examine the frequency of PPI-specific T cells in new-onset *HLA-A\*24*<sup>+</sup> patients and control subjects. We identified a novel naturally processed and HLA-A24–presented PPI signal peptide epitope (PPI<sub>3–11</sub>; LWMRLPLLL). HLA-A24 tetramer analysis reveals a significant expansion of PPI<sub>3–11</sub>-specific CD8 T cells in the blood of *HLA-A\*24*<sup>+</sup> recent-onset patients compared with HLA-matched control subjects. Moreover, a patient-derived PPI<sub>3–11</sub>-specific CD8 T-cell clone shows a proinflammatory phenotype and kills surrogate  $\beta$ -cells and human *HLA-A\*24*<sup>+</sup> islet cells in vitro. These results indicate that the type 1 diabetes susceptibility molecule HLA-A24 presents a naturally processed PPI signal peptide epitope. PPI-specific, HLA-A24–restricted CD8 T cells are expanded in patients with recent-onset disease. Human islet cells process and present PPI<sub>3–11</sub>, rendering themselves targets for CTL-mediated killing. *Diabetes* 61:1752–1759, 2012

**T**he hallmark of type 1 diabetes is the destruction of insulin-producing  $\beta$ -cells in the pancreas. The processes and immune cells involved are not fully understood as yet, but there is an emerging view that CD8 T cells have a major role in  $\beta$ -cell death. Evidence for this includes the fact that CD8 T cells are the predominant population of lymphocytes infiltrating the islets in newly diagnosed type 1 diabetic patients (1). Moreover,

their frequency is inversely correlated with insulin positivity, and once insulin content within an islet is lost, the number of CD8 T cells declines (2). Several studies show an increased expression of HLA class I on islet cells in type 1 diabetic patients (1,3,4), which implies an enhanced susceptibility to CD8 T cell–mediated killing. Finally, in a previous study, we recapitulated the CD8 T-cell pathway of selective  $\beta$ -cell death in vitro by showing that T-cell clones generated from the blood of a patient, which recognize a peptide of preproinsulin (PPI) presented by HLA-A2\*0201, can mediate specific  $\beta$ -cell killing (5).

More recent, further weight has been added to the importance of the CD8 T-cell autoantigen/HLA class I pathway by the discovery in a large-scale single nucleotide polymorphism study of allelic forms of HLA class I genes that confer significant type 1 diabetes risk (6). Within these alleles, *HLA-A\*24* has a strong disease-predisposing effect (odds ratio  $\sim$ 1.5) and also is significantly associated with a younger age of diabetes onset (6). The *HLA-A\*24* super-type is present in 12–20% of Caucasian and  $\sim$ 60% of Japanese populations, with *HLA-A\*2402* being the most common variant (7,8).

We hypothesized that the presence of HLA-A24 molecules confers risk for type 1 diabetes through presentation of epitopes from key  $\beta$ -cell autoantigens and that recognition of these by CD8 cytotoxic T cells (CTLs), when displayed on the  $\beta$ -cell surface, contributes to  $\beta$ -cell death. We therefore examined the HLA-A24 peptide ligandome of a surrogate human  $\beta$ -cell line generated by transfection of *HLA-A\*24* and *INS* genes into an inert *HLA*-negative carrier cell. We elected to study PPI as the index autoantigen, since there is evidence that proinsulin is the major target of the autoimmune response in children developing type 1 diabetes (9). In the current study, we identify a new epitope naturally processed and presented from the signal peptide of PPI and examine the prevalence of circulating PPI-specific CD8 T cells in newly diagnosed, *HLA-A\*24*<sup>+</sup> type 1 diabetic patients. Of import, we show the generation of CD8 T-cell clones specific for the HLA-A24–PPI complex and use cytotoxicity assays to examine the natural processing and presentation of PPI by human islet cells. These data highlight the importance of the PPI signal peptide in shaping the  $\beta$ -cell–specific autoreactive T-cell repertoire in type 1 diabetes and elucidate potential mechanisms through which HLA class I molecules might contribute to the pathogenesis of the disease.

## RESEARCH DESIGN AND METHODS

**Transfected cell lines.** PPI cDNA was inserted between the *Bam*HI and *Eco*RI sites in pcDNA6/myc-His B vector (Invitrogen, Paisley, Scotland, U.K.) for expression in mammalian cell lines. *HLA-A\*2402* was cloned from Epstein

From the <sup>1</sup>National Institute for Health Research Comprehensive Biomedical Research Centre at Guy's and St. Thomas' National Health Service Foundation Trust and King's College London, London, U.K.; the <sup>2</sup>Department of Immunobiology, King's College London, London, U.K.; the <sup>3</sup>Department of Hematology, Leiden University Medical Centre, Leiden, the Netherlands; the <sup>4</sup>Department of Immunohematology and Blood Transfusion, Leiden University Medical Centre, Leiden, the Netherlands; the <sup>5</sup>Division of Diabetes and Nutritional Science, King's College London, London, U.K.; the <sup>6</sup>Department of Diabetes and Endocrinology, Guy's and St. Thomas' Hospital National Health Service Foundation Trust, London, U.K.; and the <sup>7</sup>Department of Medicine, Cardiff University, Cardiff, Wales, U.K.

Corresponding author: Mark Peakman, mark.peakman@kcl.ac.uk.

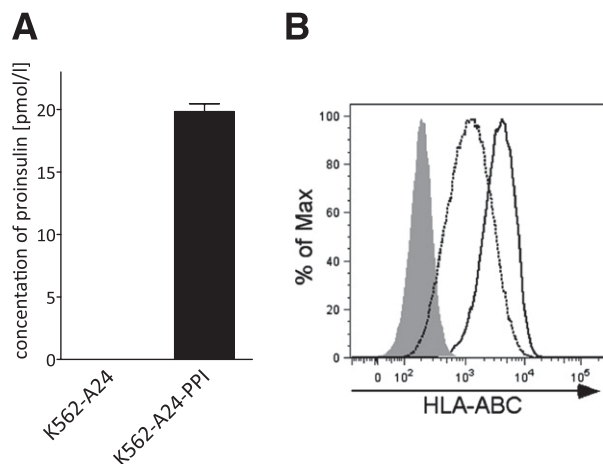
Received 28 October 2011 and accepted 3 March 2012.

DOI: 10.2337/db11-1520

This article contains Supplementary Data online at <http://diabetes.diabetesjournals.org/lookup/suppl/doi:10.2337/db11-1520/-/DC1>.

P.A.v.V. and M.P. contributed equally to this study.

© 2012 by the American Diabetes Association. Readers may use this article as long as the work is properly cited, the use is educational and not for profit, and the work is not altered. See <http://creativecommons.org/licenses/by-nc-nd/3.0/> for details.

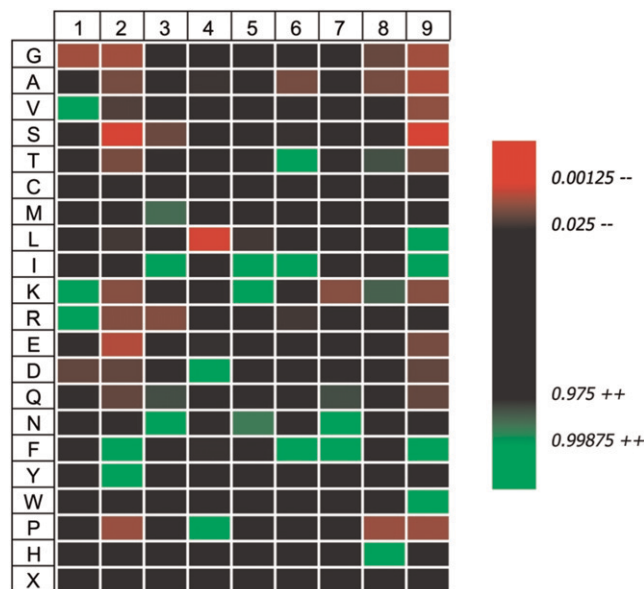


**FIG. 1.** Generation and characterization of surrogate  $\beta$ -cell line. The myelogenous leukemia cell line K562 is transfected with *HLA-A\*2402* and *INS* genes to express PPI (A), such that immunoreactive insulin is detectable in culture supernatants by ELISA, and HLA-A24 (B), shown here detected by flow cytometry using a pan-HLA-ABC monoclonal antibody W6/32. Expression of major histocompatibility complex class I molecules on K562-A24-PPI cells (solid line) was slightly higher than in the K562-A24 cells (dashed line). Isotype control staining was similar in both cell lines; gray filled curve shows K562-A24-PPI isotype staining.

Barr virus-transformed B cells and inserted between *Bam*HI and *Eco*RI sites in pcDNA3.1 vector (Invitrogen). K562 cells were cultured in RPMI-1640 medium supplemented with 10% heat-inactivated FCS and 1% penicillin/streptomycin solution (all Invitrogen) at 37°C, 5% CO<sub>2</sub>, and transfected using Effectene (QIAGEN, Hilden, Germany) to yield K562-PPI, K562-A24, and K562-A24-PPI cell lines that were maintained in the presence of appropriate selection media (Blasticidin 10  $\mu$ g/mL and Geneticin 0.7 mg/mL). Expression of HLA class I molecules was confirmed by flow cytometry using anti-HLA-ABC antibody (W6/32; AbD Serotec, Oxford, U.K.). Proinsulin was detected in supernatant of overnight cultures by ELISA (DRG International, Marburg, Germany). Next,  $5 \times 10^9$  cells from the relevant cell line were harvested and washed with PBS, and cell pellets were stored at  $-80^\circ\text{C}$ .

**Affinity purification and mass spectrometry.** Immunoaffinity purification of HLA class I molecules and peptide extraction were carried out as previously described (5). Peptides were resuspended in 100/0.1 v/v water/formic acid and analyzed by an online nano high-performance liquid chromatography-mass spectrometry system (10). Next, 15- $\mu$ L injections were added onto a precolumn (Reprosil, 15 mm  $\times$  100  $\mu$ m) and eluted via an analytical column (Reprosil, 20 cm  $\times$  50  $\mu$ m), and peptides were resolved using a gradient of 30 min to 50% solvent B (10/90/0.1 v/v/v water/acetonitrile/formic acid). The analytical column was drawn to a tip of  $\sim 5$   $\mu$ m internal diameter, and the tip functioned as the electrospray needle of the nanoelectrospray source of an LTQ FT Ultra mass spectrometer (Thermo Scientific, Bremen, Germany). All tandem mass spectra were searched against the human International Protein Index database with the database search program MASCOT version 2.2.04. Peptides with MASCOT scores  $<40$  were discarded.

**Subjects.** Fresh heparinized blood samples were obtained from 10 *HLA-A\*24\** patients with recent-onset type 1 diabetes and 10 *HLA-A\*24\** nondiabetic control subjects (Table 1). Studies were carried out with the approval of the local research ethics committee, and informed consent was obtained from all participants. *HLA-A\*24* genotype was identified by PCR sequence-specific primer sequencing. Peripheral blood mononuclear cells (PBMCs) were isolated fresh on density gradients (Lymphoprep; Nycomed, Oslo, Norway) and



**FIG. 2.** Distribution of amino acids at all positions including both major anchors (P2 and P9) for all 107 9-mer peptides eluted from *HLA-A\*24\** K562 cells expressing PPI compared with the amino acid frequency of the human proteome. Data shown as a heatmap in which increased or decreased amino acid frequencies are drawn as a gradient of green or red shades, respectively. Only amino acids that show a significant difference in distribution from the theoretical human proteome are shown ( $P < 0.05$ ). Heatmap was created using iceLogo software (21). Trp at P2 is highly unusual for HLA-A24 but does not show as significantly upregulated in iceLogo since it is also relatively rare in the human proteome (1.4%). (A high-quality color representation of this figure is available in the online issue.)

washed in RPMI-1640 with 1% penicillin/streptomycin and 2% human AB serum (all Invitrogen) twice before use.

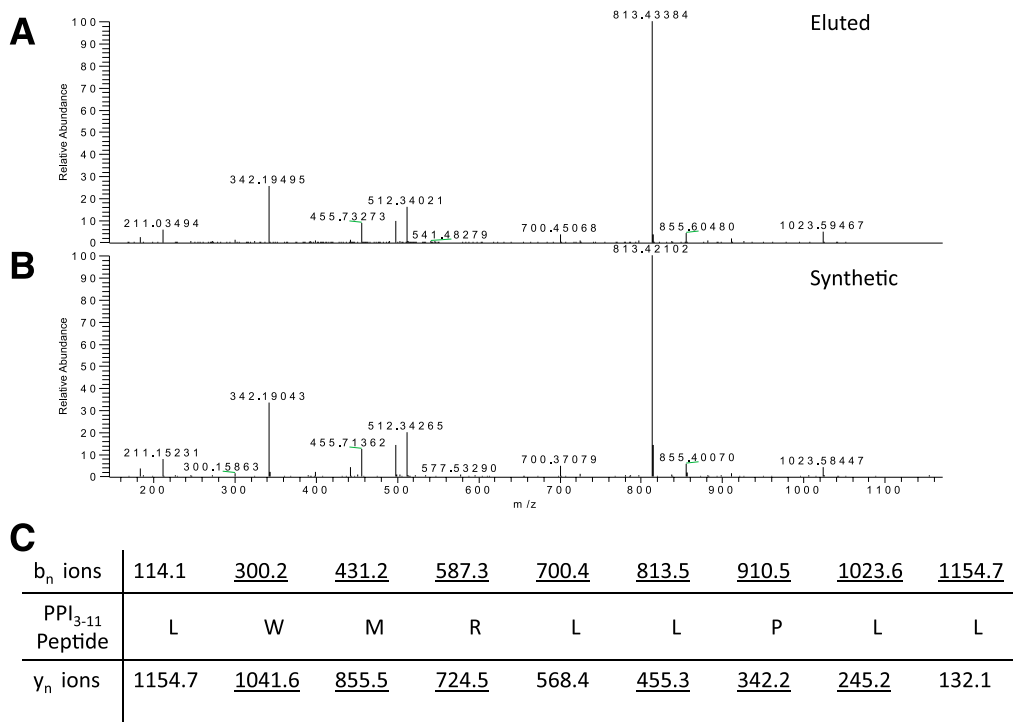
**Ex vivo tetramer analysis of CD8 T-cell responses.** HLA-A24 tetramers labeled with phycoerythrin (PE) and allophycocyanin (APC) were generated as described (5) and loaded with either PPI<sub>3-11</sub> (LWMRLPLLL) or the immunodominant, HLA-A24-presented cytomegalovirus (CMV) peptide (IEI<sub>248-257</sub>, AYAQKIFKIL; referred to as CMV-AYA) (11,12). Patient and control subject samples were examined for the presence of tetramer-positive CD8 T cells using  $3 \times 10^6$  PBMCs washed twice with PBS and stained with a live/dead violet amine reactive dye (Invitrogen) for 15 min at room temperature, followed by washing and incubation with 100 nmol/L protein kinase inhibitor (dasatinib) (13) for 30 min at 37°C, 5% CO<sub>2</sub>. Subsequently, PBMCs were stained for 15 min at 37°C, 5% CO<sub>2</sub>, with either dual-labeled (PE and APC) PPI<sub>3-11</sub> or single-labeled (PE) CMV-AYA tetramers. After washing in PBS, cells were stained with the following surface monoclonal antibodies: anti-CD3 V500, anti-CD8 APC-H7 (both BD Biosciences, San Jose, CA), anti-CD14 Pacific Blue, and anti-CD19 Pacific Blue (both Invitrogen). The gating strategy can be found in Supplementary Fig. 1. Stained PBMC were maintained on ice and in the dark until acquisition on the same day on a BD FACSCanto II (BD Biosciences) and analyzed using FlowJo software (Tree Star, Ashland, OR).

**Generation of CD8 T-cell clones.** CD8 T-cell clones specific for PPI<sub>3-11</sub> were generated as described (5). In brief, blood monocytes were cultured in X-Vivo 15 medium (Lonza, Walkersville, MD) supplemented with 5% AB, 100 IU/mL penicillin and 100  $\mu$ g/mL streptomycin (Invitrogen), 100 ng/mL interleukin

**TABLE 1**  
Characteristics of type 1 diabetic patients and control subjects

	<i>n</i>	Male (%)	Age (years), mean (SD)	Duration of type 1 diabetes (months)	Autoantibodies (% positive)	
					Antiglutamic acid decarboxylase	Anti-IA2 autoantibodies
Patients	10	40	28 (7)	7.5	75 ( <i>n</i> = 8)	50 ( <i>n</i> = 8)
Control subjects	10	20	36 (10)	N/A	Negative	Negative

IA2, insulinoma-associated protein 2; N/A, not applicable.



**FIG. 3. A:** Tandem mass spectrometry analysis of collision-induced dissociation revealing the tandem mass spectrum of a peptide of mass (577.86 m/z) in fraction 33. **B:** The correct identity of the peptide was proven by tandem mass spectrometry of the synthetic compound. **C:** Amino acid sequence of the peptide with the expected b- and y-fragment ions. Observed fragment ions are underlined. This confirms PPI<sub>3-11</sub> (LMWRLPLL) as naturally processed and presented by HLA-A24 on K562-A24-PPI cells. (A high-quality color representation of this figure is available in the online issue.)

(IL)-4, and 50 ng/mL granulocyte-macrophage colony-stimulating factor (Biosource/Invitrogen, Paisley, Scotland, U.K.) to obtain monocyte-derived immature dendritic cells (iDCs), which were harvested on day 6 and cryopreserved. iDCs were thawed 24 h before arrival of a fresh patient sample, washed in X-Vivo/5% AB serum, and split at a ratio of 4:1 in which 4 parts were stimulated in media supplemented with tumor necrosis factor (TNF)- $\alpha$  (25 ng/mL; Miltenyi Biotec, Bergisch Gladbach, Germany), IL-1 $\beta$  (10 ng/mL; Strathmann Biotech, Hannover, Germany), IL-6 (100 ng/mL; Miltenyi Biotec), and prostaglandin E-2 (1  $\mu$ g/mL; Sigma-Aldrich, Poole, U.K.) and 1 part with poly I:C (12.5  $\mu$ g/mL; InvivoGen, San Diego, CA). After 24 h, matured dendritic cells (DCs) were harvested, washed, and pulsed with 10  $\mu$ g PPI<sub>3-11</sub> peptide in X-Vivo/5% AB serum for 1 h at 37°C. After extensive washing, matured DCs were cultured at a 1:30 ratio with freshly obtained immunomagnetically isolated CD8 T cells (CD8 Isolation Kit II; Miltenyi Biotec) in 48-well culture plates in X-vivo/5% AB serum supplemented with 10 ng/mL IL-7 (PeproTech, Rocky Hill, NJ), 0.1 ng/mL IL-15, 5% Cellkine (Helvetica Health Care, Geneva, Switzerland), and 25 IU/mL IL-2 (Prometheus/Novartis, San Diego, CA). On day 10, cells were harvested and stained with anti-CD3 (V500), anti-CD8 (APC H7), violet amine reactive dye (live/dead exclusion; pacific blue), and PPI<sub>3-11</sub> tetramer (PE and APC) as appropriate. CD3<sup>+</sup>CD8 double tetramer-positive T cells were flow sorted (for gating strategy, see Supplementary Fig. 1) and seeded at one cell per well into 96-well plates containing  $0.2 \times 10^6$  irradiated PBMCs in culture medium (CM; X-Vivo/5% AB serum, with IL-7 [10 ng/mL], IL-15 [0.1 ng/mL], IL-2 [100 IU/mL], and 2.5% Cellkine) and phytohemagglutinin-M (5  $\mu$ g/mL; Sigma-Aldrich). Growing CD8 T-cell clones were restimulated every 15–20 days. CMV-AYA clones were generated directly ex vivo after staining of PBMCs as above using CMV-AYA tetramers.

**Cytotoxicity assays.** HLA-A\*24<sup>+</sup> human islets were obtained with appropriate ethical approval from the King's College Hospital Islet Transplantation Unit. As described previously (5), islet-enriched cell fractions were cultured in CMRL1066 containing 5.6 mmol/L glucose, supplemented with 10% FCS, 100 units/mL penicillin, 100  $\mu$ g/mL streptomycin, 2 mmol/L L-Gln (Invitrogen), 500 IU/mL interferon (IFN)- $\gamma$ , 50 IU/mL IL-1 $\beta$ , 2,500 IU/mL TNF- $\alpha$  (all Miltenyi), and 1,000 IU/mL IFN- $\alpha$  (Roche, Mannheim, Germany) to upregulate HLA class I expression (5). Cytotoxicity was analyzed by a nonradioactive europium hydrophilic ligand cytotoxicity assay using DELFIA Technology (PerkinElmer) as described (5). When using K562 cell lines,  $1 \times 10^6$  K562-A24 cells were pulsed with 10  $\mu$ g PPI<sub>3-11</sub> for 1 h at 37°C or left unpulsed (K562-A24-PPI and K562-A24). Target cells ( $2.5 \times 10^3$ /well) were seeded into each of the 96-well plates containing CD8 T-cell clone in CM, and after 4 h at 37°C, 20  $\mu$ L supernatant

was removed for measurement of the fluorescent signal (FLUOstar Omega Time-Resolved Fluorescence Reader, BMG Labtech, Offenburg, Germany). To determine maximum lysis, K562 or islet cells were treated with 20  $\mu$ L lysis buffer. Spontaneous release was measured from wells containing labeled K562 or islet cells as appropriate. Specific lysis was calculated as follows: % specific lysis = (experimental-spontaneous release)  $\times$  100/(maximum-spontaneous release).

**Cytokine analysis.** Clone cells ( $2 \times 10^5$ ) were seeded in duplicate into 96-well plates and incubated with  $2 \times 10^4$  islet cells for 18 h at 37°C in CM. Positive control stimulation was achieved with 50 ng/mL phorbol myristic acid (PMA) and 10  $\mu$ g/mL ionomycin. Supernatant (100  $\mu$ L) was removed and analyzed in duplicate with a cytokine multiplex assay (Millipore, Billerica, MA), and plates were analyzed on a Luminex Flexmap 3D system (Invitrogen).

**T-cell receptor sequencing.** T-cell receptor (TCR) clonotyping was performed from tetramer-sorted clone cells pelleted and resuspended in RNAlater (Ambion, Austin, TX). Total RNA was extracted (RNeasy Mini Kit, QIAGEN) and first strand synthesis of 5' cDNA fragments prepared using the SMARTer 5' RACE cDNA Amplification Kit (Clontech, Palo Alto, CA). PCR of the tailed cDNA was performed using a TCR  $\beta$ -constant region-specific primer (5'-GCT-GACCCACTGTGCACCTCCTTCCC-3') or  $\alpha$ -constant region-specific primer (5'-CCAGGCCACAGCACTGTTGCTCTTGAAGTCC-3') with Phusion High-Fidelity enzyme (Finnzymes, Oy, Finland). PCR products were purified by gel extraction, A-tailed, ligated into the pGEM-T Easy Vector System I (Promega, Madison, WI), transformed into TOP10 cells (Invitrogen), and sequences determined using the IMGT/V-QUEST tool (14).

**Statistical analysis.** A two-tailed Mann-Whitney test was used for comparing the frequency of tetramer-positive cells between disease groups. A two-tailed Spearman test was used to assess the correlation between the percentage of CMV-AYA and PPI<sub>3-11</sub>-specific CD8 T cells, with  $P < 0.05$  considered significant.

## RESULTS

**Identification of a novel naturally processed PPI epitope presented by HLA-A24.** Using a previously described approach (5), we transfected the HLA-negative myelogenous leukemia cell line K562 with *INS* encoding human PPI and *HLA-A\*2402* to generate surrogate  $\beta$ -cells (K562-A24-PPI) secreting proinsulin and expressing HLA-A24

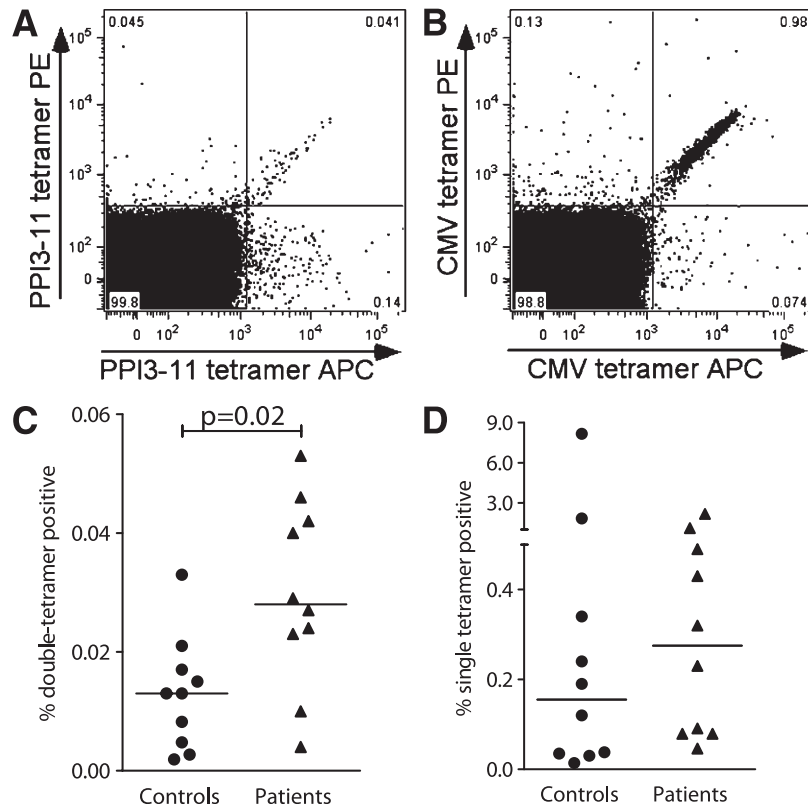


molecules on their surface (Fig. 1). We then affinity purified HLA-A24 from bulk cultures of these cells and acid eluted the peptide ligandome. Using stringent mass spectra matching (MASCOT scores  $\geq 40$ ), we identified 179 peptides of 8–12 amino acid length that represent variants of 165 unique peptides, with the vast majority (60%) being 9-mers. In accordance with earlier reports (15,16), we found a strong preference for an aromatic residue in position P2 (90% Tyr or Phe) and a nonhydrophobic amino acid at the c-terminus (89% Leu, Phe, or Ile) (Fig. 2). Within the peptide pool, we identified a sequence of PPI signal peptide (PPI<sub>3–11</sub>) (Fig. 3A) that was confirmed by the tandem mass spectrometry profile of the synthetic compound (Fig. 3B). It is intriguing that PPI<sub>3–11</sub> has a Trp at P2; only 1.9% of 9-mer peptides we identified had a Trp at this position, and Trp at P2 is highly unusual in published algorithms of HLA-A24 binding peptides (15,16). Within our peptide pool of 9-mers, there were no peptides with nucleophilic (Ser, Thr, and Cys), acidic (Asp and Glu), or basic (His, Lys, and Arg) amino acids in P2. There was a strong preference for hydrophobic amino acids at P9, although amino acids with neutral side chains (Trp and Tyr) were also tolerated (Fig. 2). Although at other positions certain amino acids were significantly more frequently found (e.g., Ile, Lys, and Asn in P5), there were no or very few amino acids that were not tolerated at those positions. Overall, only P2 and P9 showed a restrictive amino acid pattern.

**Detection of PPI<sub>3–11</sub>-specific CD8 T cells by HLA-A24 tetramer analysis.** We used PPI<sub>3–11</sub>- and CMV-AYA-loaded HLA-A24 tetramers to assess the frequencies of circulating

autoreactive and antiviral CD8 T cells, respectively, in recent-onset *HLA-A\*24*<sup>+</sup> patients with type 1 diabetes and in non-diabetic *HLA-A\*24*<sup>+</sup> control subjects (Table 1). To address the issue of signal to noise being unfavorable in the detection of rare autoreactive T cells, we used a dual-labeled tetramer approach for identifying PPI<sub>3–11</sub>-specific CD8 T cells similar to that used in the quantum dot studies of Velthuis et al. (17) for quantification of HLA-A2-restricted autoreactive T cells. Dual-stained PPI<sub>3–11</sub> and CMV-AYA tetramer-positive CD8 T cells were clearly distinguishable (Fig. 4A and B and Supplementary Fig. 1). Tetramer-positive CD8 T cells reactive to PPI<sub>3–11</sub> were significantly more frequent in recent-onset patients with type 1 diabetes compared with control subjects ( $P = 0.02$ ) (Fig. 4C). In contrast, CMV-AYA-specific CD8 T cells were detected at similar levels in patients and control subjects ( $P = \text{NS}$ ) (Fig. 4D). There was no significant correlation between the frequencies of PPI<sub>3–11</sub>- and CMV-AYA-specific CD8 T cells in patients and control subjects.

**Isolation of CD8 T-cell clones.** At two different time points, we attempted to isolate PPI<sub>3–11</sub>-specific CD8 T-cell clones from the same index patient with type 1 diabetes. On the first occasion, short-term peptide-stimulated PBMC lines were generated. Single cell sorting of dual PPI<sub>3–11</sub> tetramer-positive cells on day 9, followed by expansion in vitro, yielded three clones of sufficient number to identify as dual PPI<sub>3–11</sub> tetramer positive (1D5, 1D10, and 2B3) (Supplementary Fig. 2). Cell pellets were stored for TCR clonotyping, but these clones failed to expand further. On the second occasion, 6 months later, sufficient PBMCs from two coordinated blood draws were available to enable



**FIG. 4.** Representative dual tetramer staining (PE- and APC-labeled) of PBMCs from a patient with type 1 diabetes. Gated, live CD3<sup>+</sup>CD8 cells are shown stained with PPI<sub>3–11</sub>-loaded (A) and CMV-AYA-loaded (B) tetramers. C: Percentage of CD8 T cells that are dual tetramer positive when stained with PPI<sub>3–11</sub>-loaded reagents in 10 patients with recent onset type 1 diabetes and 10 control subjects, all bearing *HLA-A\*24*. Horizontal lines represent medians, and levels are significantly higher in patients than in control subjects. D: Staining with dual tetramers loaded with CMV-AYA. Percentage dual tetramer-positive cells is similar in patients and control subjects.

use of our conventional cloning strategy (5) in which autologous matured DCs pulsed with PPI<sub>3-11</sub> are cultured with purified peripheral blood CD8 T cells. Using this strategy, a further three dual PPI<sub>3-11</sub> tetramer-positive clones were established (4C6, 3E7, and 1C11) (Fig. 5A–C) and expanded to sufficient quantity for functional analysis. PPI<sub>3-11</sub>-specific clones did not bind irrelevant tetramer (CMV-AYA) (Supplementary Fig. 3). In addition, a CMV-AYA-specific CD8 T-cell clone was obtained by direct ex vivo single cell sorting of dual CMV-AYA HLA-A24 tetramer-positive cells (Fig. 5D). TCR clonotyping established that 1D5, 1D10, and 2B3 from the first cloning and 4C6 and 3E7 (1C11 not tested) from the second cloning 6 months later all expressed the same clonotype: the TCR  $\alpha$ -chain gene *TRAV5\*01* with CDR3- $\alpha$  sequence CAEPSGNTGKLI $\alpha$  and  $\beta$ -chain gene *TRBV7-9\*03* with CDR3- $\beta$  sequence CASSLHHEQYF.

**Cytotoxic potential of PPI<sub>3-11</sub>-reactive CD8 T-cell clones.** We examined the antigen-specific cytotoxic potential of PPI<sub>3-11</sub>-reactive CD8 T-cell clone 4C6 initially against K562-A24-PPI cells, which according to the elution studies, naturally process and present PPI<sub>3-11</sub>, and also against K562-A24 cells pulsed with relevant peptide. Using a range of effector-to-target ratios, killing was specific and approached a maximal ratio of 12:1 when K562-A24 cells were pulsed with PPI<sub>3-11</sub> peptide (Fig. 6A). K562-A24-PPI cells, naturally processing and presenting PPI<sub>3-11</sub>, were also killed, albeit to a lesser extent (Fig. 6A). The specificity of 4C6 for PPI<sub>3-11</sub> is indicated by the very low level of killing seen upon coculture

of clone with K562-A24 cells pulsed with peptide only (open bars, Fig. 6A) or pulsed with an irrelevant peptide (CMV-AYA) (Fig. 6B). HLA-A24-restricted CD8 T-cell clone cells (1G8) specific for CMV-AYA did not kill K562-A24-PPI cells to any significant degree (Fig. 6C), and this low-level killing lacked specificity since it was similar to that observed when K562-A24 (unpulsed) or K562-A24-PPI cells were used as targets (Fig. 6B and C).

We next examined the cytotoxic potential of the PPI<sub>3-11</sub> CD8 T-cell clone on *HLA-A\*24*<sup>+</sup> human islet cells. Islet cell numbers were limiting and, therefore, a restricted range of effector-to-target ratios were used selected based on the K562 cell line killing experiments. Islet cells were killed by PPI<sub>3-11</sub>-specific CD8 T-cell clone 4C6; in contrast, CD8 T-cell clone 1G8 specific for CMV-AYA failed to kill (Fig. 6D). Both PPI<sub>3-11</sub>- and CMV-AYA-specific clones killed *HLA-A\*24*<sup>+</sup> islet cells to a comparable and much higher degree when the targets were pulsed with cognate peptide. The lower level of PPI<sub>3-11</sub>-mediated killing with unpulsed human islet cells is likely to reflect the heterogeneous nature of the islet cell preparations and the fact that levels of surface peptide-HLA complexes achieved via endogenous processing and presentation do not reach that attained via exogenous pulsing. Only background levels of killing were observed when HLA-A24 PPI<sub>3-11</sub> CTL 4C6 or HLA-A24 CMV-AYA CTL 1G8 were cocultured with human *HLA-A\*0201*<sup>+</sup> (*HLA-A\*24*<sup>-</sup>) islet cells (Fig. 6E).

When cocultured with *HLA-A\*24*<sup>+</sup> human islets, the PPI<sub>3-11</sub>-specific CD8 T-cell clone 4C6 secreted effector cytokines,

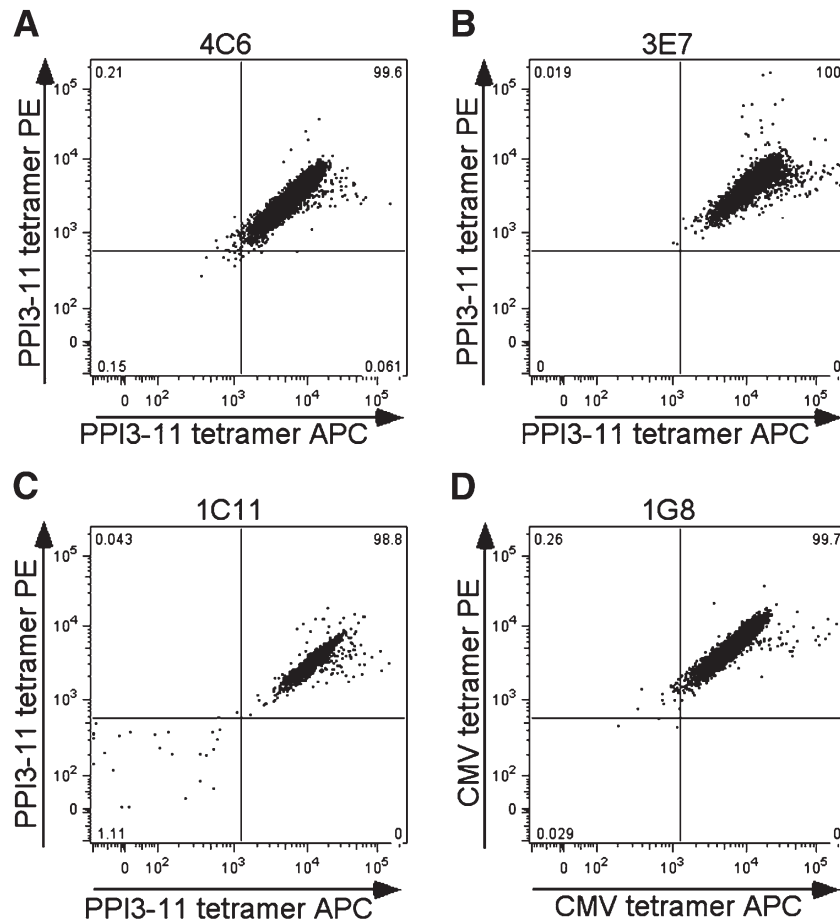
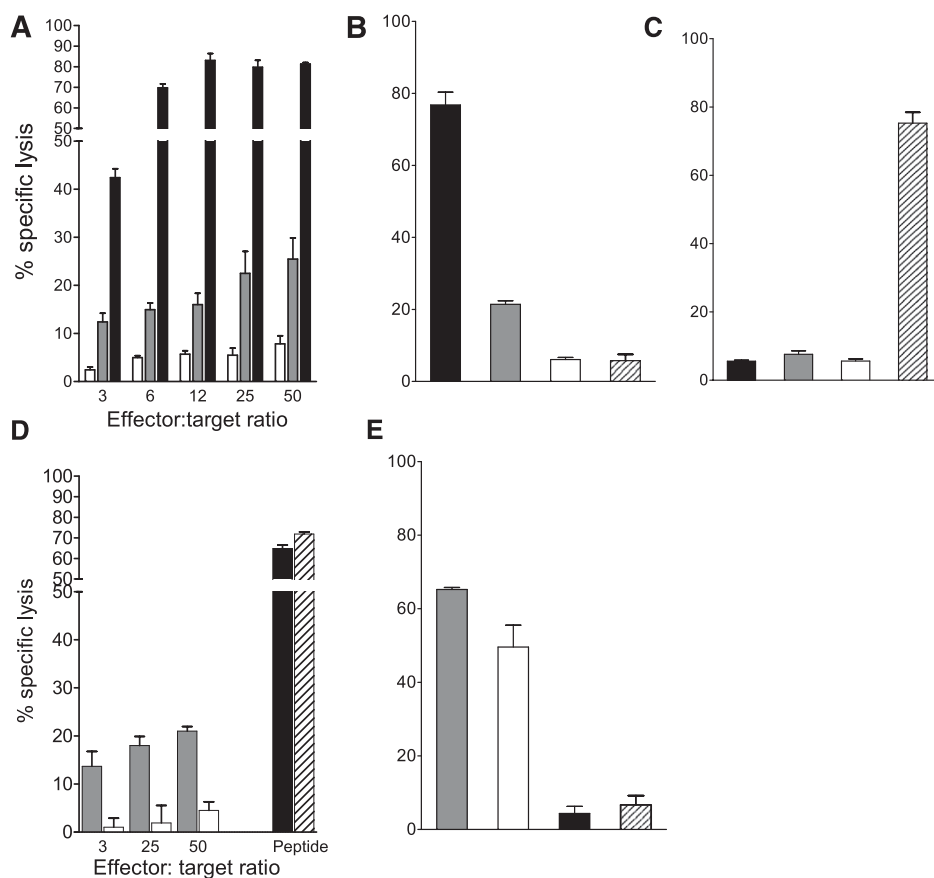


FIG. 5. A–C: Representative staining of three CD8 T-cell clones generated from a single patient that are dual PPI<sub>3-11</sub>-tetramer positive and a single clone staining with CMV-AYA-loaded reagents (D).



**FIG. 6.** Cytotoxicity assays using 4C6 PPI<sub>3-11</sub>- and 1G8 CMV-AYA-specific CD8 T-cell clones. **A:** 4C6 PPI<sub>3-11</sub> CTLs kill K562-A24-PPI cells naturally processing and presenting PPI<sub>3-11</sub> (gray bar) at a range of effector-to-target ratios, with increasing killing as the ratio increases. Higher killing is observed, and peaks at a ratio of 12:1, when K562-A24 cells are pulsed with PPI<sub>3-11</sub> (black bar). Low-level killing is seen with K562-A24 pulsed with peptide diluent only (open bar). Results are representative of three experiments, and error bars are SEMs from triplicate wells. **B:** 4C6 PPI<sub>3-11</sub> CTLs kill K562-A24 cells pulsed with PPI<sub>3-11</sub> peptide (black bar) and K562-A24-PPI naturally presenting PPI<sub>3-11</sub> (gray bar), but only background killing of K562-A24 cells pulsed with irrelevant CMV-AYA peptide (cross-hatched bar) or peptide diluent only (open bar) is seen. Effector-to-target ratio 25:1. **C:** 1G8 CMV-AYA CTLs kill K562-A24 target cells pulsed with CMV-AYA peptide (cross-hatched bar), but show background killing only in the presence of K562-A24 pulsed with PPI<sub>3-11</sub> (black bar), K562-A24-PPI naturally presenting PPI (gray bar), or K562-A24 pulsed with peptide diluent only (open bar). Effector-to-target ratio 25:1. **D:** 4C6 PPI<sub>3-11</sub> CTLs kill HLA-A\*24<sup>+</sup> human islet cells naturally processing and presenting PPI<sub>3-11</sub> (gray bar). Only low-level killing is seen with CMV-AYA CTLs (open bar). Both PPI<sub>3-11</sub> and CMV-AYA CTLs kill human islet cells to comparable, high levels when targets are pulsed with cognate peptide (black and cross-hatched bar, respectively). Results are a single experiment, and error bars are SEMs from triplicate wells. **E:** There is robust, high-level killing of human HLA-A\*24<sup>+</sup> islets by the previously characterized CTL clone 3F2, specific for PPI<sub>15-24</sub> when presented by HLA-A2 (5) either when the islet cells are pulsed with PPI<sub>15-24</sub> (gray bar) or when islets are naturally presenting PPI<sub>15-24</sub> (open bar). In contrast, killing of the same HLA-A\*24<sup>+</sup> islets (unpulsed) is only at background levels in the presence of HLA-A24-restricted 4C6 PPI<sub>3-11</sub> CTLs (black bar) and HLA-A24 1G8 CMV-AYA CTLs (cross-hatched bar). Effector-to-target ratio 50:1. Experiments represented in **B**, **C**, and **E** were performed in parallel to one another with the same passage of CTL.

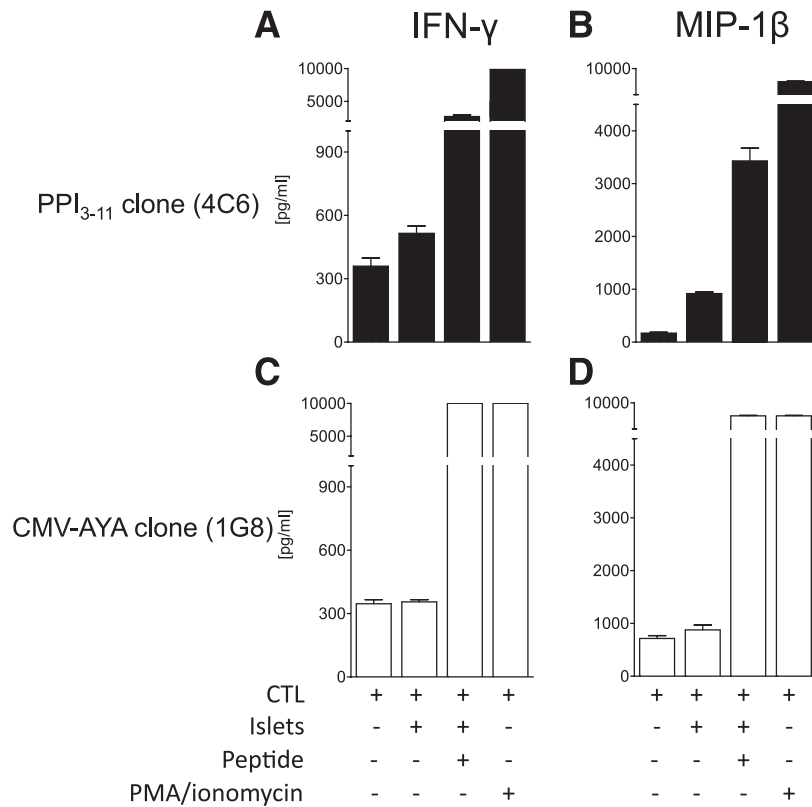
most notable, macrophage inflammatory protein (MIP)-1 $\beta$  and IFN- $\gamma$  when compared with resting levels (Fig. 7), as well as TNF- $\alpha$  (data not shown). In contrast, the 1G8 CMV-AYA-specific CD8 clone failed to produce cytokine in response to coculture with human islets. Both clones show maximal MIP-1 $\beta$  and IFN- $\gamma$  secretion when cocultured with cognate peptide-pulsed HLA-A\*24<sup>+</sup> islets or when stimulated with PMA/ionomycin (Fig. 7).

## DISCUSSION

The underlying basis for HLA class I gene-associated risk in type 1 diabetes is not known. In an attempt to elucidate this, in the current study we manufactured an HLA class I negative human cell line to express the type 1 diabetes-risk allele HLA-A24 and also PPI, a major  $\beta$ -cell-specific autoantigen targeted in the disease. We used sensitive mass spectrometry to examine the HLA-associated peptides that these cells display. A 9-mer sequence from the

signal peptide region of PPI, LWMRLLPLL, was identified as naturally processed and presented by HLA-A24 under these conditions. This PPI epitope was confirmed as being recognized by CD8 T cells in the peripheral blood using HLA-A24 tetramers loaded with LWMRLLPLL. Moreover, circulating CD8 T cells recognizing this peptide were significantly more frequent in patients with type 1 diabetes than in control subjects matched for HLA-A\*24. It is important that disease relevance was substantiated by the demonstration that a CD8 T-cell clone specific for LWMRLLPLL presented by HLA-A24 kills human islet cells in vitro. These results identify a new biomarker of PPI-specific autoreactivity for the HLA-A\*24<sup>+</sup> subset of type 1 diabetic patients and add weight to the notion that cytotoxic CD8 T cells have the potential to mediate  $\beta$ -cell death.

The peptides we eluted and sequenced from the K562-A24-PPI cell line are entirely consistent with the previously published motif (15,16), indicating that our approach yields



**FIG. 7.** Cytokine production by 4C6 PPI<sub>3-11</sub>- and 1G8 CMV-AYA-specific CD8 T-cell clones after coculture with HLA-A\*24<sup>+</sup> human islet cells. 4C6 PPI<sub>3-11</sub> CTLs make IFN- $\gamma$  (A) and MIP-1 $\beta$  (B) in response to culture with HLA-A\*24<sup>+</sup> human islet cells. Levels are maximal when human islet cells are pulsed with PPI<sub>3-11</sub> peptide or CTLs are stimulated with PMA/ionomycin. C and D: 1G8 CMV-AYA CTLs fail to make these cytokines in response to culture with unmanipulated human islet cells but show full cytokine production capability when cells are pulsed with cognate peptide or stimulated with PMA/ionomycin. Results are a single experiment and error bars are SEMs from duplicate wells.

peptides naturally processed and presented by HLA-A24. It is intriguing that LWMRLPLL derives from the signal peptide region that acts as a presequence targeting proinsulin to the endoplasmic reticulum. Signal peptide epitopes are unusual in relation to human disease, but this is the second time that this phenomenon has been observed in the context of type 1 diabetes. Other signal peptide epitopes have also been suggested to play a role in type 1 diabetes, including the prediction that PPI<sub>8-16</sub> would bind DQB1\*0602DQA1\*0102 with high affinity (18). In a previous study that uses a similar approach, we showed that the signal peptide epitope PPI<sub>15-24</sub> is naturally presented by HLA-A2 (5). In that study, we also provided evidence that epitope presentation from the signal peptide may not follow a conventional processing route (i.e., it does not require proteasome cleavage and import into the endoplasmic reticulum via transporter associated with processing). Future studies will be required to establish whether the same holds for LWMRLPLL. For both PPI<sub>15-24</sub> and PPI<sub>3-11</sub>, we confirmed presentation by human islet cells, using CTL lines as probes and cytotoxicity as the read out. This finding rules out the possibility that the discovery of signal peptide epitopes is solely an artifact of using a surrogate  $\beta$ -cell line in the discovery process.

This is the first time that PPI<sub>3-11</sub> has been described as being naturally processed and presented by HLA-A24 molecules. An earlier report by Chang et al. (19) identified PPI<sub>3-11</sub> as being capable of binding to HLA-B15, HLA-B8, and HLA-A2 using HLA class I assembly assays, although of interest, binding to HLA-A24 could not be demonstrated.

Toma et al. (20) tested the binding affinity and CD8 T-cell response toward the 10-mer PPI<sub>2-11</sub>, which was identified as a potential epitope of HLA-A24 using a binding algorithm (20). Despite extensive searching for oxidized and nonoxidized forms, we did not identify this 10-mer as being naturally processed and presented by K562-A24-PPI cells. Moreover, the same group only rarely detected responses to PPI<sub>2-11</sub> in newly diagnosed patients with type 1 diabetes using a sensitive IFN- $\gamma$  enzyme-linked immunospot assay. It remains unclear, therefore, whether a nested set of peptides, similar to the combination of epitopes (PPI<sub>15-24</sub> and PPI<sub>17-24</sub>) that we described previously for HLA-A2, also exists in this region for HLA-A24. Although our approach requires a complex series of techniques that includes the challenge of cloning epitope-specific CD8 T cells, the advantage of this strategy is that the novel HLA-A24-presented PPI<sub>3-11</sub> epitope is confirmed as naturally processed and presented by both surrogate  $\beta$ -cells and human HLA-A\*24<sup>+</sup> islet cells.

The disease relevance of the PPI<sub>3-11</sub> epitope is further bolstered by the increased number of circulating PPI<sub>3-11</sub>-specific CD8 T cells that we detected in recent-onset type 1 diabetic patients when compared with control subjects. Since both groups bear HLA-A\*24<sup>+</sup>, there is a strong implication that this expansion is directly associated with either disease development or disease predisposition. The cytotoxicity studies that we conducted in vitro, although using a single CD8 T-cell clonotype from a single patient, offer the proof of concept that a CTL response to PPI<sub>3-11</sub>, in type 1 diabetic patients with HLA-A\*24<sup>+</sup>, is a direct



contributor to  $\beta$ -cell death and, hence, to disease pathogenesis. Future studies on the *HLA-A\*24*<sup>+</sup> subset of patients and at-risk subjects will be able to use the PPI<sub>3-11</sub>-A24 tetramer reagents that we describe here to track, enumerate, and phenotype PPI-reactive CD8 CTLs and establish whether there are temporal links to decline in  $\beta$ -cell mass.

On two separate occasions, 6 months apart, we generated PPI<sub>3-11</sub>-specific T-cell clones with the same antigen-specific TCR clonotype. This evidence of prolonged existence of circulating, identical, disease-related clonotypes is of considerable interest. Again, the finding resonates with our previous work, in which we showed that PPI<sub>15-24</sub>-specific CD8 T cells with identical TCR clonotypes could be isolated from fresh blood samples obtained from the same patient 1.5 years apart (5). The data imply that there may be ancestral clones that are long lived and likely to be dominant in the immune response of an individual patient. It is tempting to speculate that this quality may be a component of the mechanism(s) through which HLA-A24, and comparable disease-risk HLA molecules, render an individual susceptible to disease or an early age of onset. It is plausible that molecules such as HLA-A24 bias the selection of T-cell repertoires, either during positive selection in the thymus or during priming in the periphery, toward a configuration that favors presentation of autoantigenic epitopes that are in turn dominantly and abundantly presented by the  $\beta$ -cell. PPI signal peptide has properties that fit this description, being generated in tune with metabolic demands on the  $\beta$ -cell and being cotranslated with HLA class I molecules at the intracellular location that is critical for their peptide loading.

#### ACKNOWLEDGMENTS

D.K. is in receipt of a PhD Studentship from the U.K. Department of Health via the National Institute for Health Research Comprehensive Biomedical Research Centre Award to Guy's and St. Thomas' National Health Service Foundation Trust in partnership with King's College London. R.R.K. is in receipt of a Diabetes U.K. PhD Studentship. The study was supported by grants from the Juvenile Diabetes Research Foundation (7-2005-877 and 1-2007-1803 to M.P.). M.P. receives funding via the EU FP7 EU Framework 7 Large-Scale Focused Collaborative Research Project on Natural Immunomodulators as Novel Immunotherapies for Type 1 Diabetes.

No potential conflicts of interest relevant to this article were reported.

D.K. designed and performed experiments, analyzed data, conceived ideas, oversaw research, and wrote the manuscript. R.R.K., M.E., R.J.E., M.G.K., A.d.R., M.E., and G.C.H. performed experiments. J.P. and C.M.D. recruited and characterized patients. A.S. performed experiments, conceived ideas, and oversaw research. P.A.v.V. designed and performed experiments, analyzed data, conceived ideas, and oversaw research. M.P. designed and performed experiments, analyzed data, conceived ideas, oversaw research, and wrote the manuscript. M.P. is the guarantor of this work and, as such, had full access to all of the data in the study and takes responsibility for the integrity of the data and the accuracy of the data analysis.

The authors are grateful to Amanda Bishop and Nicola McLintock (University of Bristol, London, U.K.) and Samantha Gillman (Guy's Hospital, London, U.K.) for their help with the sample collection, and to all patients and control

subjects for their blood donation. The authors also are grateful to Professor John Todd (Cambridge University) for discussions on HLA class I associations in type 1 diabetes and Professor David Price (Cardiff University) for advice on TCR clonotyping.

#### REFERENCES

1. Bottazzo GF, Dean BM, McNally JM, MacKay EH, Swift PG, Gamble DR. In situ characterization of autoimmune phenomena and expression of HLA molecules in the pancreas in diabetic insulinitis. *N Engl J Med* 1985;313:353-360
2. Willcox A, Richardson SJ, Bone AJ, Foulis AK, Morgan NG. Analysis of islet inflammation in human type 1 diabetes. *Clin Exp Immunol* 2009;155:173-181
3. Foulis AK, Farquharson MA, Hardman R. Aberrant expression of class II major histocompatibility complex molecules by B cells and hyperexpression of class I major histocompatibility complex molecules by insulin containing islets in type 1 (insulin-dependent) diabetes mellitus. *Diabetologia* 1987;30:333-343
4. Itoh N, Hanafusa T, Miyazaki A, et al. Mononuclear cell infiltration and its relation to the expression of major histocompatibility complex antigens and adhesion molecules in pancreas biopsy specimens from newly diagnosed insulin-dependent diabetes mellitus patients. *J Clin Invest* 1993;92:2313-2322
5. Skowera A, Ellis RJ, Varela-Calviño R, et al. CTLs are targeted to kill beta cells in patients with type 1 diabetes through recognition of a glucose-regulated preproinsulin epitope [corrected in: *J Clin Invest* 2009;119:2844]. *J Clin Invest* 2008;118:3390-3402
6. Nejentsev S, Howson JM, Walker NM, et al.; Wellcome Trust Case Control Consortium. Localization of type 1 diabetes susceptibility to the MHC class I genes HLA-B and HLA-A. *Nature* 2007;450:887-892
7. Middleton D, Williams F, Meenagh A, et al. Analysis of the distribution of HLA-A alleles in populations from five continents. *Hum Immunol* 2000;61:1048-1052
8. Williams F, Meenagh A, Maxwell AP, Middleton D. Allele resolution of HLA-A using oligonucleotide probes in a two-stage typing strategy. *Tissue Antigens* 1999;54:59-68
9. Achenbach P, Koczwara K, Knopff A, Naserke H, Ziegler AG, Bonifacio E. Mature high-affinity immune responses to (pro)insulin anticipate the autoimmune cascade that leads to type 1 diabetes. *J Clin Invest* 2004;114:589-597
10. Meiring HD, van der Heeft E, ten Hove GJ, de Jong APJM. Nanoscale LC-MS<sup>MS</sup>: technical design and applications to peptide and protein analysis. *J Sep Sci* 2002;25:557-568
11. Kuzushima K, Hayashi N, Kimura H, Tsurumi T. Efficient identification of HLA-A\*2402-restricted cytomegalovirus-specific CD8(+) T-cell epitopes by a computer algorithm and an enzyme-linked immunospot assay. *Blood* 2001;98:1872-1881
12. Burrows SR, Elkington RA, Miles JJ, et al. Promiscuous CTL recognition of viral epitopes on multiple human leukocyte antigens: biological validation of the proposed HLA A24 supertype. *J Immunol* 2003;171:1407-1412
13. Lissina A, Ladell K, Skowera A, et al. Protein kinase inhibitors substantially improve the physical detection of T-cells with peptide-MHC tetramers. *J Immunol Methods* 2009;340:11-24
14. Brochet X, Lefranc MP, Giudicelli V. IMGIT/V-QUEST: the highly customized and integrated system for IG and TR standardized V-J and V-D-J sequence analysis. *Nucleic Acids Res* 2008;36(Web Server issue):W503-508
15. Kubo RT, Sette A, Grey HM, et al. Definition of specific peptide motifs for four major HLA-A alleles. *J Immunol* 1994;152:3913-3924
16. Maier R, Falk K, Rötzschke O, et al. Peptide motifs of HLA-A3, -A24, and -B7 molecules as determined by pool sequencing. *Immunogenetics* 1994;40:306-308
17. Velthuis JH, Unger WW, Abreu JR, et al. Simultaneous detection of circulating autoreactive CD8+ T-cells specific for different islet cell-associated epitopes using combinatorial MHC multimers. *Diabetes* 2010;59:1721-1730
18. Cucca F, Lampis R, Congia M, et al. A correlation between the relative predisposition of MHC class II alleles to type 1 diabetes and the structure of their proteins. *Hum Mol Genet* 2001;10:2025-2037
19. Chang L, Kjer-Nielsen L, Flynn S, et al. Novel strategy for identification of candidate cytotoxic T-cell epitopes from human preproinsulin. *Tissue Antigens* 2003;62:408-417
20. Toma A, Laika T, Haddouk S, et al. Recognition of human proinsulin leader sequence by class I-restricted T-cells in HLA-A\*0201 transgenic mice and in human type 1 diabetes. *Diabetes* 2009;58:394-402
21. Colaert N, Helsens K, Martens L, Vandekerckhove J, Gevaert K. Improved visualization of protein consensus sequences by iceLogo. *Nat Methods* 2009;6:786-787