

## Corrigendum

# Adult mammalian stem cells: the role of Wnt, Lgr5 and R-spondins

**Jurian Schuijers and Hans Clevers**

Correspondence to: h.clevers@hubrecht.eu

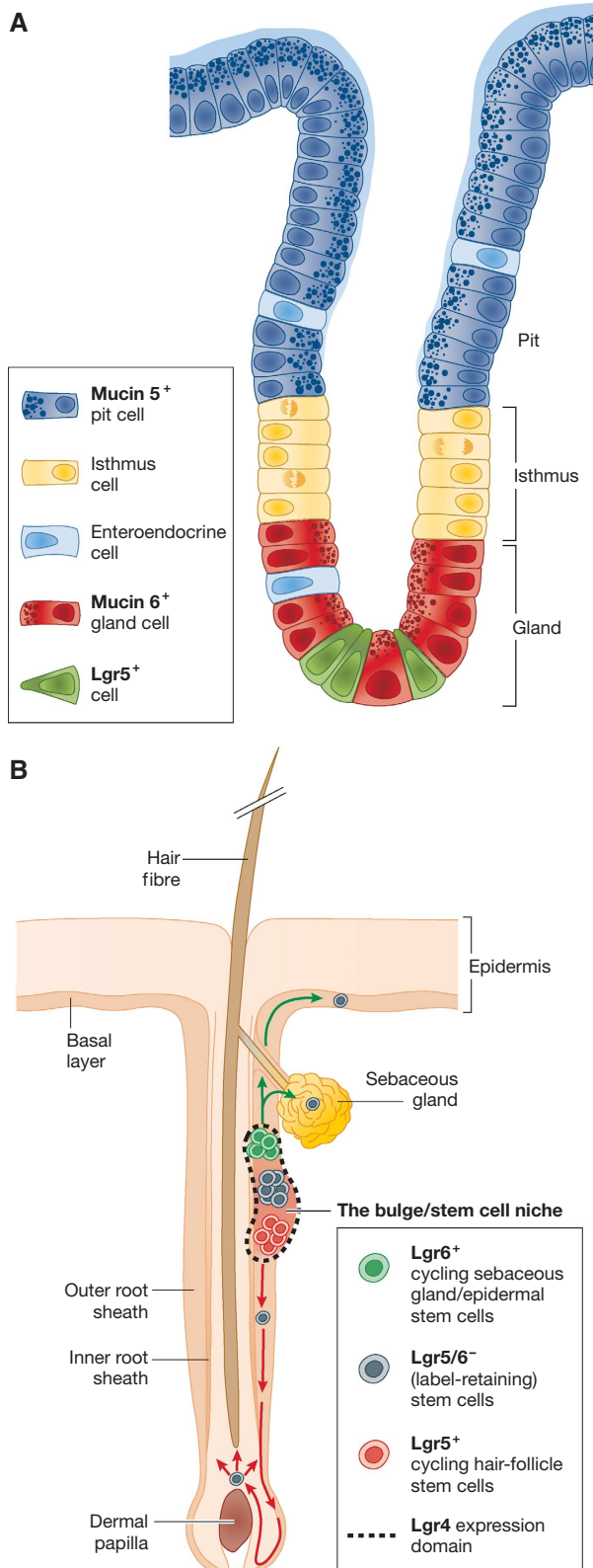
*The EMBO Journal* (2012) **31**, 3031–3032. doi:10.1038/emboj.2012.177

**Correction to:** *The EMBO Journal* (2012) 31, 2685–2696. doi:10.1038/emboj.2012.149

Since the publication of this paper, the authors have noticed errors in the labelling of Figure 4A.

The correct figure is shown on the next page and also in the online publication of this paper.

The authors apologize for any inconvenience caused.



**Figure 4** Stomach and hair follicle. **(A)** The gastric glands of the stomach are subdivided in the pit, isthmus and gland. Lgr5<sup>+</sup> cells reside at the bottom and regenerate the epithelium. **(B)** Multiple stem cell populations are responsible for homeostasis of the adult skin.