



Published in final edited form as:

J Psychiatr Ment Health Nurs. 2013 April ; 20(3): 263–272. doi:10.1111/j.1365-2850.2012.01907.x.

Impact of Mano a Mano Mujer, an HIV Prevention Intervention, on Depressive Symptoms among Chilean Women

Rosina Cianelli, PhD^{1,2,*}, Loreto Lara, MSN^{2,3}, Natalia Villegas, PhD¹, Margarita Bernales, PhD⁴, Lilian Ferrer, PhD², Lorena Kaelber, PhD¹, and Nilda Peragallo, DrPH¹

University of Miami, Pontificia Universidad Católica de Chile

Abstract

Background—Worldwide, in Chile, the number of women living with HIV is increasing. Depression is considered a factor that interferes with HIV prevention. Depression may reach 41% among low income Chilean women. Depressed people are less willing to participate in behaviors that protect them against HIV.

Objectives—To analyze the impact of *Mano a Mano-Mujer (MM-M)* on depressive symptoms among Chilean women.

Methods—A quasi-experimental design was used to test the impact of *MM-M*, an HIV prevention intervention. The research was conducted in Santiago- Chile, a total of 400 women participated in the study (intervention group, n = 182; control group, n = 218). The intervention was guided by the social-cognitive model and the primary health model. The intervention consists of six two-hour sessions delivered in small groups. Sessions covered: HIV prevention, depression, partner's communication, and substance abuse. Face to face interviews were conducted at baseline and at 3 months follow-up

Results—At 3 months post-intervention, Chilean women who participated in *MM-M* significantly decreased their reported depressive symptoms.

Conclusions—*MM-M* provided significant benefits for women's depression symptoms. This study offers a model that address depression, a risk factor for HIV. It uses nurses as leaders for the screening of depressive symptoms and as facilitators of community interventions.

1. Introduction

As of the end of 2010, over 34 million people worldwide were living with HIV, with 2.7 million new infections, and 1.8 million HIV related deaths (Joint United Nations Programme on HIV/AIDS [UNAIDS] 2011). Worldwide, nearly half of all persons living with HIV currently are women. Once considered a predominantly homosexual and male condition, epidemiological studies demonstrate that HIV has spread to the general population, and women are one of the most vulnerable groups in terms of its acquisition (UNAIDS 2011).

The feminization of HIV, in Chile, is a serious public health problem. The slow governmental programmatic responses to this phenomenon is reflected by inadequate HIV prevention messages targeting women, inefficient public healthcare system to address

Corresponding author at: University of Miami, School of Nursing and Health Studies, 5030 Brunson Drive, Coral Gables, Florida 33146, USA. Tel.: +1 305 284 2147. rcianelli@miami.edu.

¹School of Nursing and Health Studies, University of Miami, Coral Gables, USA

²Escuela de Enfermería, Pontificia Universidad Católica de Chile, Santiago, Chile

³Escuela de Enfermería, Universidad del Desarrollo, Chile

⁴School of Population Health, University of Auckland, New Zealand

women' health disparities related to HIV (e.g., early diagnosis and treatment, lack of testing confidentiality, stigmatization of HIV positive women since HIV is still associated with commercial sex work, and multiple sex partners), and the increase in the number of HIV newly reported cases among women indicate the severity of HIV feminization. This has been shown in epidemiological reports. Between 1986 and 1990, the ratio of males to females living with HIV in Chile was 7:1, the ratio dropped to 4:1 in 2009 (MINSAL 2009). Also, in many cases, these HIV positive women are confronting issues that negatively impact their quality of life such as poverty, violence, low educational level, and most of them are housewives with no paid employment. All of these make them more vulnerable and potentially increasing the costs for the health care system. It is estimated that 15% of all persons living with HIV (PLHIV) in Chile are female, most of whom are young women between the ages of 20-39 years old (MINSAL 2009).

Additionally, the majority of women acquired HIV through sexual contact with their husbands or stable partners, situation that reflects rooted cultural values and gender inequalities expressed through *machismo* a cultural acceptance that men will engage in high-risk sexual behavior. Machismo and self-esteem negatively affect personal relationship and family life. Women in machismo type relationship are more often passive, dependent, and have difficulties discussing, negotiating, and persuading their partners to engage in safer sex practices making HIV prevention for them more complex (Carrier 1989, Cianelli *et al.* 2008, CONASIDA 2003, Ferrer *et al.* 2009, Martinez-Schallmoser *et al.* 2003, Peragallo *et al.* 2005, Rajevic 2000). The presence of *machismo* among this population may influence the continuity of HIV feminization. These numbers reflect the limited effectiveness of the Chilean public health prevention strategy.

Another serious health problem associated with HIV acquisition, which deeply affect women is depression. This has been associated with developing and maintaining risky sexual behaviors (Pao *et al.* 2000, Shrier *et al.* 2001). Depression also has implications for families and society as a whole. It is considered to be a huge emotional and economic burden. The financial impact of depression affect both personal and family income, the capacity of people with depression to work, productivity in the workplace and contributions to the national economy, as well as the utilization of treatment and support services. The magnitude of the burden of depression on family members is hard to evaluate and measure, and for this reason is frequently ignored; although, it does have an important effect on the family's quality of life and overall well-being of persons, societies and countries (World Health Organization 2005).

Depression is defined as a mental disorder with several symptoms such as depressed mood, loss of interest, low self-worth, disturbed sleep or appetite, low energy, and poor concentration that lead to difficulties in a persons' ability to take care of themselves (WHO 2010). The literature shows that women are twice as likely to suffer depression as compared to men and in several cases the diagnosis is often associated with somatic complaints. These types of complaints serve as barriers for establishing effective prevention strategies among these women. Also depressed women are more accepting and have higher thresholds for suffering and not seeking treatment for their symptoms (Afifi 2007, Amin & Bentley 2002, Ferrer *et al.* 2004).

According to data from the Chilean Ministry of Health (2006) Chile, as well as in other countries, the incidence of depression is increasing. The prevalence is around 8% in the general population and may reach 41% in low-income women (MINSAL 2006). Rojas *et al.* (1999) found that 27 % of Chilean women had suffered a depressive episode in her life; almost all of them originated from their low educational level, work conditions, and

difficulties in their partner relationship. In Chile, there is no data available regarding the prevalence of depression among women living with HIV.

Additionally, the literature in Chile report that depression has been related to low self-esteem and machismo. (Cianelli *et al.* 2008, Ferrer *et al.* 2004, Rosenbluth & Hidalgo, 1978). Self-esteem can be defined as the pride a person feels for one's self; it is a psychological state that influences social processes and behaviors (Perez-Mitre 1981). Low self-esteem has been associated with higher emotional distress, drug abuse, high-risk sexual behavior, somatic complaints, and depression disturbances (Anderson 2000, Nyamathi *et al.* 1993; Visintini *et al.* 1995).

Machismo is related to the idea that men are superior to women and have social domination and privilege over females in economic, judicial, political, cultural, and psychological spheres (Cianelli *et al.*, 2008; Gissi 1978). Macho men expect an affectionate, submissive, and faithful woman, who plays a passive and dependent role in the sexual sphere and who can work inside and outside of the home if necessary (Rosenbluth & Hidalgo 1978). Depression is one of the factors that increase a woman's vulnerability to acquire HIV (Brown *et al.* 2006; Cheng & Chan 2007; DiClemente *et al.* 2001). Klein *et al.* (2008) stated that the presence of depressive symptoms is an aspect that adversely affects women's attitudes toward condom use and increase HIV risk behaviors. This relationship can be associated with the fact that people with high levels of depressive symptoms give less value to their lives, grounded on the feeling of hopelessness that surrounds them, and they are less willing to participate in behaviors that protect against HIV acquisition (Cheng & Chan 2007, Myers *et al.* 2002, Van Der Does 2002).

Results of several studies show that, depression is associated with risky practices for acquiring HIV, such as, having more than three sexual partners over a period of six months, having more lifetime sexual partners, using drugs before having sex, sharing drugs or trading drug for sex, participating in unprotected sex and having feelings of low self-efficacy in negotiating condom use (Brown *et al.* 2006, DiClemente *et al.* 2001, Hutton *et al.* 2004). Moreover, Kim *et al.* (2006) found that depressive symptoms predicted women's participation in HIV prevention programs, reflected in the fact that women with more depressive symptoms do not engage in intervention programs related to HIV prevention.

The literature reflects the high prevalence of depressive symptoms among women and the harmful consequences for HIV prevention.

The purpose of this paper is to analyze the impact of *Mano a Mano-Mujer (Hand to Hand-for Women)* on depressive symptoms, after controlling by self-esteem and machismo, among low-income Chilean women.

2. Methods

2.1. Study design

A quasi-experimental design was used to test the impact of *Mano a Mano-Mujer*, an HIV prevention intervention, on HIV-related knowledge, attitudes and behaviors for Chilean low-income women. The current study is a secondary analysis of data collected to test the impact of *Mano a Mano-Mujer* on depressive symptoms. Two participating communities were assigned to the intervention or the delayed-intervention control condition. Individual randomization was not used to avoid contamination between intervention and control groups. We matched the number of participants in the groups and we selected them according to the inclusion criteria of the study. The matching of the number of participants was based on the G power analysis which showed that a sample size of 398 subjects at each

point in time would give 80% statistical power to identify this study effect size with a one-tailed test of significance test ($\alpha = 0.05$). With an 80% retention at 3 months follow up, 500 women were needed for recruitment (250 women in the control group and 250 women in the intervention group) in order to obtain a final sample of 200 per group.

This was of special concern because the women lived and participated within their communities, where they also frequently participated in other organizations where they would meet informally to discuss other community issues.

2.2. Setting

The project was conducted in two low-income communities in the southeast area of the Metropolitan Region of Santiago, Chile. Santiago has the largest concentration of people living with HIV in the country. The southern sector of the city is one of the most affected areas (MINSAL 2009).

2.3. Participants

Eligibility criteria for participating in the study included being a Chilean woman, residing in one of the two selected communities, being between 18 to 49 years old; and reporting sexual activity within the 6 months previous to participation in the project. Women were recruited at different community centers, including the primary health care clinics in small groups over time. A final sample size of 400 subjects at 3 months post-intervention was achieved. In total, 835 women were screened and 496 (59.4%) met eligibility criteria and provided written consent to participate in the study. Of the 496 participants, 244 were in the intervention community and 252 in the control community (See Figure 1). The 3 months retention rate was 81 % overall, 75% for the intervention group (182 women) and 87% for the control group (218 women).

This sample size ($n = 400$) at 3 months post-intervention provided adequate power ($>.80$ power, effect size = .33, $\alpha < .05$, one-tailed test of significance).

2.4. The intervention

Mano a Mano-Mujer is an HIV prevention intervention for low-income Chilean women. The intervention was developed using a conceptual framework of the social-cognitive model of behavioral change, contextual tailoring and the World Health Organization's primary health care model. *Mano a Mano- Mujer* is based in a previous study conducted by Peragallo *et al.* (2005) in the United States with Latino women (SEPA) and in the work conducted in Malawi (Mzake ndi Mzake) with adults (Kaponda *et al.* 2009, Norr *et al.* 2006).

The intervention consists of six two-hour sessions delivered in small groups of 8 and 10 women which were conducted in the primary health care centers. The same facilitator and women participated from session one to session six. This method generated trust, confidence, and support networks among the women participating in *Mano a Mano- Mujer*. The sessions covered topics related to HIV, depression, sexually transmitted infections, HIV prevention (abstinence, mutual fidelity, and condom use), communication with the partner, domestic violence, substance abuse, relevance of the family and discussion of the cultural values of machismo and marianismo. The group discussions, during the sessions, allowed the women to talk about their issues, to share experiences and possible solutions. The dynamic generated in the groups allowed for the development of a support network that enhanced self-esteem, supporting them to make positive changes in their lives. The group interventions developed new group support networks for safer sex behaviors in HIV prevention. Thus, participants increased their perceived group support for safer sex behaviors. The modeling and rehearsals of negotiations, condom use and other skills built

participants' self-efficacy regarding HIV prevention behaviors. All these factors increased women's intention to practice HIV prevention behaviors and enabled them to initiate the first steps of such change, including increased partner communication, greater intimacy with partners and attempts to use condoms during sexual activity.

2.5. Data collection

Trained female data collectors interviewed participants using a standardized interview protocol and a structured interview (questionnaire). The average length of the interview was one hour. Face to face interviews were conducted at baseline, the first assessment conducted after participants were enrolled in the study, and 3-months post intervention. The interview contained closed-ended items for assessing a) socio-demographic factors (age, marital status, education, income, religion, employment status and health insurance), b) HIV related knowledge, c) attitudes (positive attitudes towards people living with HIV, perceived barriers to condom use, self-efficacy for HIV prevention behaviors, HIV reduction behavioral intentions), d) HIV Risk Reduction Behaviors (partner communication, condom use), and e) mental health resources (self-esteem, presence of depressive symptoms). The questions and scales were used by Peragallo *et al.* (2005) and Cianelli (2003) in previous studies with Hispanic women. For this paper only the demographic and depression measures will be presented, other outcomes are presented in Cianelli *et al.*, 2012.

2.6. Measurements

2.6.1. Demographics—Demographic information was collected at the beginning of the assessments. The demographic form was used to collect information about the participants' age, years of education, whether they lived with a partner, marital status, and number of children, religiosity (importance given by participants to their religious beliefs), years of education, employment status, per capita income, and health insurance status.

2.6.2. Depressive symptoms—Depressive symptoms were measured using the Center for Epidemiological Studies - Depression Scale (CES-D). This scale has been used as a screening tool and for research purposes to identify symptoms of clinical depression with several populations including the Hispanic population over the past 30 years (Crockett *et al.* 2005, Radloff 1977, Roth *et al.* 2008). The CES-D is a scale with 20 items, participants responded in a 4-point Likert scale, from 0 to 3 points, from 0 = presence of symptoms less than once a day to 3 = presence of symptoms 5 to 7 days per week. Scores range from 0 to 60, scores of 16 to 26 are considered indicative of mild depression symptoms and scores of 27 or more are indicative of major depression symptoms (Ensel 1986, Zich *et al.* 1990). Internal consistency as measured by Cronbach's alpha is high across a variety of populations generally around 0.85 in community samples. For this study Cronbach's alpha was 0.88.

2.6.3. Self-esteem—This variable was measured using the 10-item Rosenberg Self-Esteem Scale (Rosenberg 1965) assessing the level of individual's feelings of worth or importance over the past week. Participants respond using a 4 point Likert scale (strongly disagree to strongly agree; strongly agree). The total range of scores was 10-40, with a higher score indicating more self-esteem (Cronbach alpha = .81).

2.6.4. Machismo—Based on the Bem Sex Role Inventory (Bem 1974), the Masculine-Feminine Personality Traits Scale (Lara-Cantu 1989) is a measure with 60 items and consists of four scales: Assertive Masculine, Affective Feminine, Aggressive Masculine, and Submissive Feminine (SF). Each scale has 15 adjectives that capture positive and negative dimensions of the two gender roles. Lara-Cantu (1989) hypothesized that the Aggressive Masculine scale represents machismo, and this was the scale used in the study. The 15 adjectives of the Aggressive Masculine scale are assessed on a 5-point scale (0 =not at all

like me to 5=extremely like me). The scale has been found to be internally consistent and to have good convergent and discriminant validity (Lara-Cantu & Navarro-Arias 1986). The internal consistency estimate for this study was Cronbach alpha 0.74.

2.7. Statistical analysis

Completed questionnaires were entered into an SPSS database for analysis with 100% verification. Analyses were performed using SPSS, version 19. At baseline, descriptive statistics were calculated to summarize socio-demographic characteristics variables and the prevalence of depressive symptoms. The depression related symptoms for both groups (intervention and control) were compared at baseline and 3-months follow up using ANCOVA. In the analysis, the researchers controlled for baseline scores, socio-demographic information (education, per capita income, age, religiosity, and health care coverage), self-esteem, and machismo. The researchers decided to use ANCOVA to neutralize the effect of self-esteem and machismo because both factors are identified in the literature as associated with women depression in Chilean women (Cianelli *et al.* 2008; Gonzalez-Guarda *et al.* 2009, Iwata *et al.* 2002). Chi Square was used to analyze the severity of the depression symptoms, mild and major, after the intervention.

2.8. Ethical approval

The study was approved by the Pontificia Universidad Catolica de Chile, School of Nursing Human Research Ethics Committee. Participants were given detailed information about study procedures and written consent was obtained. All participation in this study was voluntary. A diagrammatic representation of the study design is given in Figure 1.

3. Results

3.1. Demographic variables

Most of the women were between 20 and 40 years, with an average age of 33 ± 8.6 and 32 ± 9.7 years in the intervention and control groups respectively. Most of the women had completed high school, (57% in the intervention group and 66% in the control group) but women in the control group had significantly higher education levels than the intervention group (10.7 ± 3 versus 9.6 ± 3.4 years of education respectively). The women had moderately low income, with an average income of 40,000 Chilean pesos (about 80 US dollars) in the intervention group and 55,000 pesos (110 US dollars) in the control group. Three quarters lived with a partner, and over one half considered themselves Catholic in both groups. Significantly different characteristics in the intervention and control groups were healthcare insurance, years of education, and religiosity. For both the intervention and control groups, the majority had public health insurance, but over one fifth (22.5%) of the intervention group had no coverage compared to only 8.3% of the control group. Regarding religiosity, the majority of the women in the sample considered their religious to be very important (70.3% in the intervention group versus 57.3% in the control group) (See Table 1).

The number of women who scored 26 or more in the CES-D scale, major depression symptoms, decreased significantly for the intervention group but not for the control group. However, the number of women who scored between 16-24 in the CES-D, mild depression symptoms, increased in the intervention group.

The results for the outcome variables are presented in Table 2. The intervention and control group scores (means or percentages) for each outcome variable were examined to test whether they were significantly different at baseline and three month post-intervention. ANCOVA was used to examine changes associated with the intervention outcome variables

after controlling for baseline levels of the interventions, the demographic factors, and self-esteem and machismo.

To assess if there were significant differences in depression symptoms across the intervention and control groups, ANCOVA analysis was performed at baseline and at 3 months. The initial models at baseline and at 3 months included education, per capita income, age, religion, and health care coverage, living with a partner, self-esteem, and machismo as covariates.

At baseline, the Levene's test of equality of error variances showed that error variances appeared to be equal across the intervention and control groups. The results showed no statistically significant difference between the depression symptoms between women in the intervention and the control group ($F(1, 392) = .05, p = .83$) after controlling for the effect of the covariates. In this model, the covariates self esteem and presence of machismo were significantly related to depression symptoms ($F(1, 392) = 154.32, p < .01$ and $F(1, 392) = 26.12, p < .01$ respectively).

At 3 months follow up, the Levene's test of equality of error variances showed that error variances appeared to be equal across the intervention and control groups. The results showed a statistically significant difference between depressive symptoms among women in the intervention and the control group ($F(1, 392) = 3.85, p = .05$) after controlling for the effect of the covariates. In this model, the covariates years of education ($F(1, 392) = 12.8, p < .01$), self-esteem ($F(1, 392) = 45.52, p < .01$) and machismo ($F(1, 392) = 15.26, p < .01$) were significantly related to depression symptoms (See Table 2).

4. Discussion

The women who participated in this study reported similar levels of depressive symptoms to those reported by the Chilean Ministry of Health (2006). At 3 months post-intervention, low-income Chilean women who participated in the *Mano a Mano-Mujer* intervention had a significant decrease in depressive symptoms. Also, women in the intervention group reported fewer symptoms of major depression and an increase in symptoms of mild depression. The assumption is that some of the women in the intervention group who reported major depression symptoms at baseline, after participating in the *Mano a Mano-Mujer* intervention reported fewer depressive symptoms scoring lower than 27 in the CES-D.

There is a sense of self-reliance among Hispanic families coping with mental health problems as well as a sense of shame for the family when mental problems – such as depression- are disclosed (Alegría *et al.* 2007, Vega & Alegría 2001). *Mano a Mano-Mujer* intervention provided the women with an opportunity to discuss these topics and to develop skills that help them discuss openly these topics with their partner (Cianelli *et al.* 2012).

Women's psychological well being is important for society because depressive symptoms interfere with a woman's and her family's daily life and normal functioning. The state of depression causes distress for the woman, the family, and those who care about her. This is important considering that in the Chilean culture, women are the main support and care providers for the family. Furthermore, one in five homes in Chile is headed by a woman, placing these women at risk for work instability (Afifi 2007, Servicio Nacional de la Mujer 2001).

A decrease in depressive symptom may allow women to take more interest in their health including protective measures for HIV prevention and the increase communication regarding HIV prevention with their partner and condom use (Lara *et al.* 2008).

Mano a Mano-Mujer intervention was successful in decreasing depressive symptoms associated with mild and major depression. Reducing depression is important both for women's general health and as a factor in enabling them to engage in healthy sexual behaviors. Interventions for Chilean women and their partners have the potential to extend to the family and community societal structure, and assist in the containment of the incipient HIV epidemic in Chile.

Besides the direct impact of *Mano a Mano-Mujer* on women, this experience may serve as the initial step for triggering permanent work for nurses in primary health care settings. Nurses are able to incorporate screening for depressive symptoms for all women during regular checkups, particularly those in search of sexual health related appointments.

Mano a Mano Mujer is an intervention primarily designed to prevent HIV transmission among low income Chilean women. However, it has also proved to help in decreasing depressive symptoms among women that participate in this intervention. It can be hypothesized that this can be the result of the a) group interaction generated among the women and the facilitator. The women have the opportunity to talk openly about issues they confront in their daily life, when usually they do not have the opportunity to talk about them. In addition, support networks among these women spontaneously emerged went beyond the group sessions; b) topics discussed (e.g., machismo, depression, self-esteem, communication) and skills developed as part of the intervention, made the women feel empowered and better able to manage their relationships.

4.1 Study limitations

The limitations of this study include the short interval between interventions and follow-up (3 months), which must be considered when evaluating the results. The outcome measures were based on self-report. Previous research has shown that social desirability may reduce respondents' willingness to report socially disapproved sexual behaviors although self-reported data are useful because under-reporting affects both intervention and control groups. The Chilean women who participated in this study were from a low-income setting, which limits the external validity of findings to other socio-economic groups of women in Chile.

5. Implications

The *Mano a Mano-Mujer* intervention provided significant benefit for women's depression symptoms. Based on the results of this study, the authors strongly recommend the development of policies to strengthen Chilean women's access to primary mental health services. More attention should be given to design interventions that can address depression symptoms in the primary health care setting, and to improve community services in order to reduce the stigma for mental health problems (Afifi 2007, Shattell *et al.* 2008).

Also, there is a need for better prevention, diagnosis, and treatment of mental health needs of women, partially related to the culturally reinforced subordinate position in relation to their male partners. Reducing depression is important for women's general health and as a factor in enabling them to engage in healthy sexual behaviors. More research is needed to help ameliorate some of the harmful societal aspects of this disease by helping to develop a social system that contributes to equality and equity for women. Also, by gaining a better conceptual understanding of the factors related to depression symptoms would aid in the development of conceptual models that could incorporate women's diversity as defined by economic and educational status in Chile (Le *et al.* 2003).

Nurses are often the first health care providers that many of these women interact with as they seek primary care. It is important that nurses convey interest, respect, and a safe environment for women to share their concerns so that depressive symptoms are able to be detected (Shatell 2008). Furthermore, is essential for nurses to understand the experience of depression symptoms among low income Chilean women and to contribute towards prevention and early referral. For example, active screening for depression within an already burdened and under-resourced public care systems raises additional concerns, including the potentially high prevalence of depression symptoms frequently found in low-income women, the needs and preferences of low income women, and the lack of availability of low-cost depression care in the community (Ashbury *et al.* 2003; Fallowfield *et al.* 2001; Mauksch *et al.* 2001).

Acknowledgments

This research was funded by the Fogarty International Center, National Institutes of Health (RO1 TW006977, "Testing an HIV/AIDS Prevention Intervention for Chilean Women," Principal Investigator - R. Cianelli. This study is part of the *Mano a Mano* HIV prevention initiative of the School of Nursing, Pontificia Universidad Católica de Chile and was created in recognition of the growing need for HIV prevention among Chilean women. Support was provided by El Centro, National Center on Minority Health and Health Disparities grant P60MD002266.

References

- Afifi M. Gender differences in mental health. *Singapore Medical Journal*. 2007; 48(5):385–391. [PubMed: 17453094]
- Alegría M, Mulvaney-Day N, Woo M, et al. Correlates of twelve-month mental health service use among Latinos: Results from the national Latino and Asian American study (NLAAS). *American Journal of Public Health*. 2007; 97(1):76–83. [PubMed: 17138911]
- Amin A, Bentley M. The influence of gender role on rural women's illness experiences and health seeking strategies for gynecological symptoms. *Journal Health Management*. 2002; 4(2):229–249.
- Anderson E. Self-esteem and optimism in men and women infected with HIV. *Nursing Research*. 2000; 49(5):262–271. [PubMed: 11009121]
- Ashbury F, Madlensky L, Raich P, et al. Antidepressant prescribing in community cancer care. *Support Care Cancer*. 2003; 11:278–285. [PubMed: 12720073]
- Bem S. The measurement of psychological androgyny. *Journal of Consulting and Clinical Psychology*. 1974; 42(2):155–162. [PubMed: 4823550]
- Brown LK, Tolou-Shams M, Lescano C, et al. Depressive symptoms as a predictor of sexual risk among African American adolescents and young adults. *Journal of Adolescent Health*. 2006; 39(3): 444e1–444e8. [PubMed: 16919811]
- Carrier JM. Sexual behavior and spread of AIDS in Mexico. *Medical Anthropology*. 1989; 10(2-3): 129–142. [PubMed: 2725200]
- Cheng S, Chan A. Withdrawal, apathy and lack of vigor in late life depression: Factorial validity and relationship to diagnosis. *Aging and Mental Health*. 2007; 11(5):532–537. [PubMed: 17882591]
- Chilean Ministry of Health [MINSAL]. [accessed 12 December 2010] Garantías explícitas en salud. Guía clínica: Depresión en personas de 15 años y más [explicit health guarantees. Clinical guideline: Depression in people 15 years and over]. 2006. Available at: <http://www.minsal.cl>
- Chilean Ministry of Health [MINSAL]. [accessed 30 September 2010] Evolución de VIH-SIDA Chile, 1984 - 2008. Departamento de epidemiología [Evolution of HIV- AIDS Chile, 1984 - 2008. Department of epidemiology]. 2009. Available at: <http://www.redsalud.gov.cl/portal/url/item/853849dda806eb30e04001011e015919.pdf>
- Cianelli, R. HIV/AIDS issues among Chilean women: Cultural factors and perception of risk for HIV/AIDS acquisition. University of Illinois at Chicago; 2003.
- Cianelli R, Ferrer L, McElmurry B. Issues on HIV prevention among low-income Chilean women: Machismo, marianismo, and HIV misconceptions. *Culture, Health and Sexuality*. 2008; 10(3): 297–306.

- Cianelli R, Ferrer L, Norr F, et al. Mano a Mano Mujer an effective HIV prevention for Chilean (in press). *Health Care for Women International*. 2012
- Chilean Commission on AIDS [CONASIDA]. [accessed 10 December 2010] Resumen de caracterización epidemiológica del VIH/SIDA en Chile. Comisión Nacional de SIDA [Characterization of HIV/AIDS in Chile epidemiological summary]. 2003. Available at: www.minsal.cl
- Crockett L, Randall B, Shen Y, et al. Measurement equivalence of the center for epidemiological studies depression scale for Latino and Anglo adolescents: A national study. *Journal of Consulting and Clinical Psychology*. 2005; 73(1):47–58. [PubMed: 15709831]
- DiClemente R, Wingood G, Crosby R, et al. A prospective study of psychological distress and sexual risk behavior among black adolescent females. *Pediatrics*. 2001; 108(5):1–6. [PubMed: 11433046]
- Ensel, W. Measuring depression: The CES-D scale. In: Dean, A.; Ensel, W., editors. *Social support, life events, and depression*. New York: Academic Press; 1986.
- Fallowfield L, Ratcliffe D, Jenkins V, et al. Psychiatric morbidity and its recognition by doctors in patients with cancer. *British Journal of Cancer*. 2001; 84(8):1011–1015. [PubMed: 11308246]
- Ferrer L, Cianelli R, Bernaldes M. VIH y SIDA en Chile: Desafíos para su prevención [HIV and AIDS in Chile: Challenges for Prevention]. *Temas de la Agenda Publica Pontificia Universidad Católica de Chile*. 2009; 4(42):1–11.
- Ferrer L, Cianelli R, Peragallo N, et al. Domestic violence, and relationship with depression and level of self-esteem in Mexican and Portorican women. *Horizonte De Enfermería*. 2004; 15:23–36.
- Gissi, J. El machismo en los dos sexos [machismo in both sexes]. In: Covarrubias, P.; Franco, R., editors. *Chile mujer y sociedad*. Santiago, Chile: Fondo de las Naciones Unidas para la Infancia; 1978. p. 550-573.
- Gonzalez-Guarda R, Peragallo N, Vasquez E, et al. Intimate partner violence, depression, and resource availability among a community sample of Hispanic women. *Issues in Mental Health Nursing*. 2009; 30(4):227–236. [PubMed: 19363727]
- Hutton H, Lyketsois C, Zenilman J, et al. Depression and HIV risk behaviors among patients in a sexually transmitted disease clinic. *The American Journal of Psychiatry*. 2004; 161(5):912–914. [PubMed: 15121659]
- Iwata N, Turner R, Lloyd D. Race/ethnicity and depressive symptoms in community-dwelling young adults: A differential item functioning analysis. *Psychiatry Research*. 2002; 110(3):281–289. [PubMed: 12127478]
- Joint United Nations Programme on HIV/AIDS [UNAIDS]. [accessed 7 January 2012] Data Table 2011. 2011. Available at: http://www.unaids.org/en/media/unaids/contentassets/documents/unaidspublication/2011/JC2225_UNAIDS_datatables_en.pdf
- Kaponda C, Jere D, Chimango J, et al. Impacts of a peer-group intervention on HIV-related knowledge, attitudes, and personal behaviors for urban hospital workers in Malawi. *Journal of the Association of Nurses in AIDS Care*. 2009; 20(3):230–242. [PubMed: 19427600]
- Kim Y, Peragallo N, DeForge B. Predictors of participation in an HIV risk reduction intervention for socially deprived Latino women: A cross sectional cohort study. *International Journal of Nursing Studies*. 2006; 43(5):527–534. [PubMed: 16153646]
- Klein H, Elifson K, Sterk C. Depression and HIV risk behavior practices among “at risk” women. *Women and Health*. 2008; 48(2):167–188.
- Lara L, Cianelli R, Ferrer L, et al. Comunicación de pareja y VIH en mujeres en desventaja social [partner communication and HIV in low income women]. *Revista Horizonte de Enfermería*. 2008; 19(2):35–43.
- Lara-Cantu M, Navarro-Arias R. Positive and negative factors in the measurement of sex roles: Findings from a Mexican sample. *Hispanic Journal of Behavioral Sciences*. 1986; 8:143–155.
- Lara-Cantu M. A sex role inventory with scales for “machismo” and “self-sacrificing woman”. *Journal of Cross-Cultural Psychology*. 1989; 20(4):386–398.
- Le H, Munoz R, Ippen C, et al. Treatment is not enough: We must prevent major depression in women. *Prevention & Treatment*. 2003; 6(1) No-No.

- Martinez-Schallmoser L, Telleen S, MacMullen N. The effect of social support and acculturation on postpartum depression in Mexican-American women. *Journal of Transcultural Nursing*. 2003; 14(4):329–33. [PubMed: 14535154]
- Mauksch L, Tucker S, Kanton W, et al. Mental illness, functional impairment, and patient preferences for collaborative care in an uninsured, primary care population. *Journal of Family Practice*. 2001; 50(1):41–47. [PubMed: 11195480]
- Myers H, Lesser I, Rodriguez N, et al. Ethnic differences in clinical presentation of depression in adult women. *Cultural Diversity and Ethnic Minority Psychology*. 2002; 8(2):138–156. [PubMed: 11987591]
- Norr K, Kaponda C, Dancy B, et al. A primary health care intervention to mobilize health workers for HIV prevention in Malawi. *Primary Health Care Research and Development*. 2006; 7:318–330.
- Nyamathi A, Wayment A, Dunkel-Schetter C. Psychosocial correlates of emotional distress and risk behavior in African-American women at risk for HIV infection. *Anxiety, Stress, and Coping: An International Journal*. 1993; 6:133–148.
- Pao M, Lyon M, D'Angelo L, et al. Psychiatric diagnoses in adolescents seropositive for the human immunodeficiency virus. *Archives of Pediatrics & Adolescent Medicine*. 2000; 154(3):240–244. [PubMed: 10710020]
- Peragallo N, Deforge B, O'Campo P, et al. A randomized clinical trial of an HIV-risk-reduction intervention among low-income Latina women. *Nursing Research*. 2005; 54(2):108–118. [PubMed: 15778652]
- Perez-Mitre G. Autoestima: Expectativas de éxito o de fracaso en la realización de una tarea [self-esteem: Success or failure expectations in task development]. *Revista De La Asociación Latinoamericana de Psicología Social*. 1981; 1:135–140.
- Radloff L. The CES-D scale: A self-report depression scale for research in the general population. *Applied Psychological Measurement*. 1977; 1(3):385–401.
- Rajevic, P. *El libro abierto del amor y el sexo en Chile* [The open book of love and sex in Chile]. Santiago de Chile: Editorial Planeta; 2000.
- Rojas G, Araya R, Fritsch R, et al. Mujer y depresión en Santiago de Chile: Resultados preliminares [Women and depression in Santiago de Chile: Preliminary results]. *Revista de Psiquiatría Clínica*. 1999; 36(1):11–17.
- Rosenberg, M. *Society and the adolescent self-image*. Princeton, NJ: Princeton University Press; 1965.
- Rosenbluth, C.; Hidalgo, C. La mujer desde una perspectiva. In: Covarrubias, P.; Franco, R., editors. *Chile mujer y sociedad*. Santiago, Chile: Fondo de las Naciones Unidas para la Infancia; 1978.
- Roth D, Ackerman M, Okonkwo O, et al. The four-factor model of depressive symptoms in dementia caregivers: A structural equation model of ethnic differences. *Psychology & Aging*. 2008; 23(3): 567–576. [PubMed: 18808246]
- Servicio Nacional de la Mujer. [accessed 15 July 2011] Un obstáculo al crecimiento del país [an obstacle to the country's growth]. 2001. Available at: <http://www.sernam.co.cl/publica.html>
- Shattell M, Hamilton D, Starr S, et al. Mental health service needs of a Latino population: A community-based participatory research project. *Issues in Mental Health Nursing*. 2008; 29:349–368.
- Shrier L, Harris S, Sternberg M, et al. Associations of depression, self-esteem, and substance use with sexual risk among adolescents. *Preventive Medicine*. 2001; 33(3):179–189. [PubMed: 11522159]
- Van Der Does W. Cognitive reactivity to sad mood: Structure and validity of a new measure. *Behaviour Research and Therapy*. 2002; 40(1):105–120. [PubMed: 11762423]
- Vega, W.; Alegría, M. Latino mental health and treatment in the United States. In: Aguirre-Molina, M.; Zambrana, RE., editors. *Health issues in the Latino community*. John Wiley & Sons, Inc; San Francisco, CA: 2001. p. 179-208.
- Visintini R, Bagnato M, Campanini E, et al. An assessment of self-esteem in HIV-positive patients. *AIDS Care*. 1995; 7(1):99–104.
- World Health Organization. *Promoting mental health: concepts, emerging evidence, practice: Report of the World Health Organization*. Geneva: Switzerland: 2005.
- World Health Organization [WHO]. [accessed 15 November 2011] Depression. 2010. Available at: http://www.who.int/mental_health/management/depression/definition/en/

Zich J, Attkisson C, Greenfield T. Screening for depression in primary care clinics: The CES-D and the BDI. *International Journal of Psychiatry in Medicine*. 1990; 20:259–277. [PubMed: 2265888]

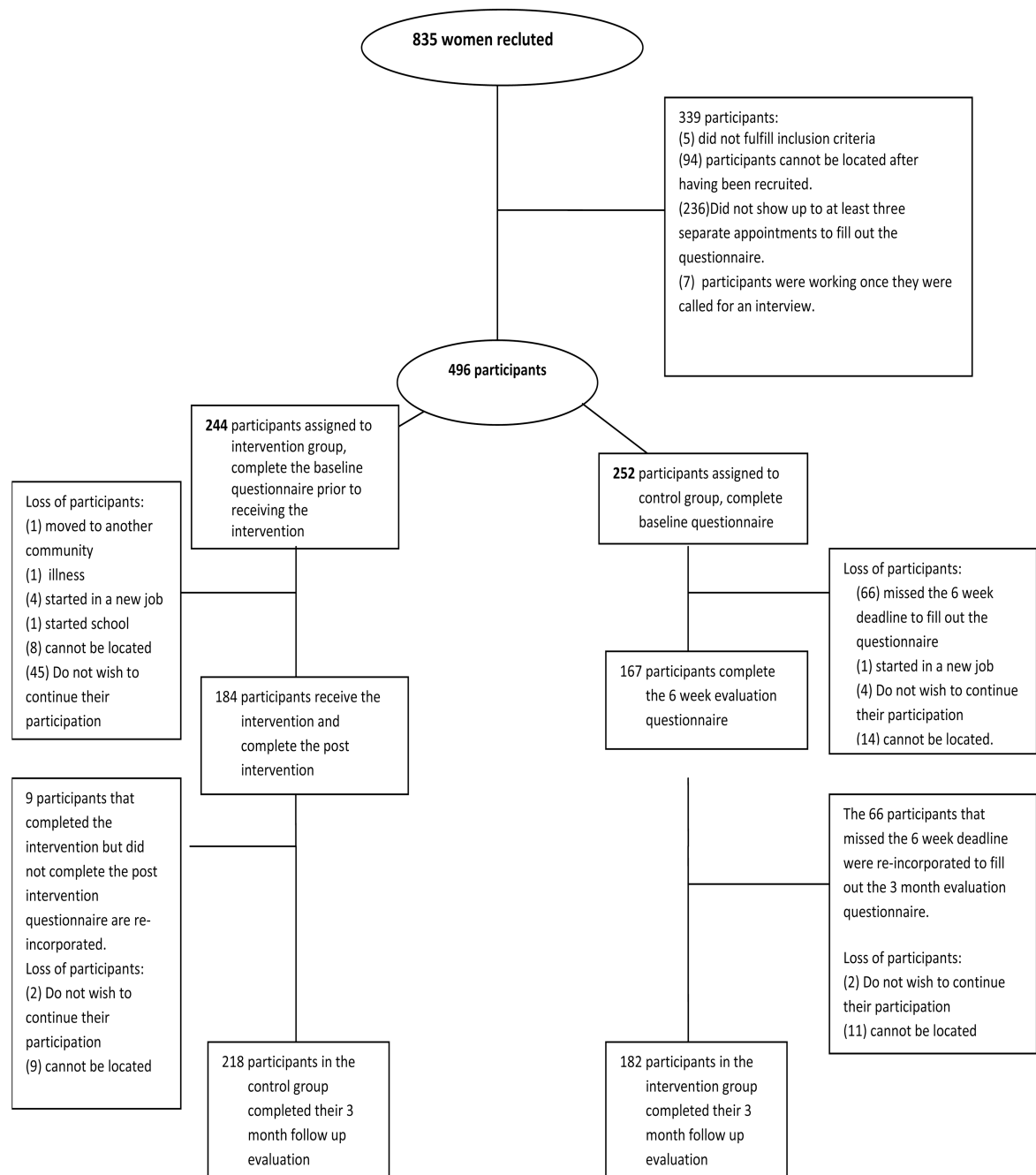


Fig. 1.
Flowchart of study design.

Table 1
Socio-Demographic Characteristics of the Sample

	Intervention (N = 182)	Control (N = 218)
Age (in years)		
Mean	33.0	32.0
(SD)	(8.6)	(9.7)
Years of education (%) [*]		
Elementary	33.0	16.0
High School	57.0	66.0
Technical	8.2	14.2
University	2.2	3.7
Household Monthly Income (Per Capita in Chilean pesos)	40,000	55,000
Mean (US dollars)	80.0	110.0
(SD)	32.9	38.4
If Living with Partner (%)	75.0	72.0
Religion		
Catholic	55.0	61.5
Evangelic	25.3	15.1
None	10.4	11.9
Other	9.3	11.5
Healthcare Insurance (%) [*]		
Public	76.4	87.6
Private	1.1	4.1
No coverage	22.5	8.3

*
p>.05

Table 2
ANCOVA Analysis for depression symptoms at baseline and at 3 months follow up (n=400)

Measure	Comparison of Means between Intervention and Control Groups (n=400)						
	Intervention (n=218)	Control (n=182)	Sum of Squares	df	Mean Square	F	P
Baseline							
Mean ± SD	23.3 ± 11.78	21.8 ± 11.06					
Estimated mean	22.5	22.4					
Model*			3.64	1	3.64	.05	.83
3 Months Follow up							
Mean ± SD	21.9 ± 10.43	22.3 ± 11.76					
Estimated mean	21	23					
Model**			368.05	1	368.05	3.85	.05

Note: ANCOVA analysis for depression symptoms included the following variables as covariates: age, years of education, religiosity, per capita income, self-esteem and presence of machismo.

* At baseline, self-esteem and presence of machismo were significantly related to depression symptoms ($F(1, 392) = 154.32, p < .01$ and ($F(1, 392) = 26.12, p < .01$) respectively).

** At 3 months follow up, the covariates years of education ($F(1, 392) = 12.8, p < .01$), self-esteem ($F(1, 392) = 45.52, p < .01$) and machismo ($F(1, 392) = 15.26, p < .01$) were significantly related to depression symptoms.