

CD133, OCT4, and NANOG in ulcerative colitis-associated colorectal cancer

HIROMI YASUDA¹, KOJI TANAKA¹, YOSHIKI OKITA¹, TOSHIMITSU ARAKI¹, SUSUMU SAIGUSA¹,
YUJI TOIYAMA¹, TAKESHI YOKOE¹, SHIGEYUKI YOSHIYAMA¹, AYA KAWAMOTO¹,
YASUHIRO INOUE¹, CHIKAO MIKI¹ and MASATO KUSUNOKI^{1,2}

Departments of ¹Gastrointestinal and Pediatric Surgery, and ²Innovative Surgery, Division of Reparative Medicine, Institute of Life Sciences, Mie University Graduate School of Medicine, Tsu, Mie 514-5807, Japan

Received May 10, 2011; Accepted August 26, 2011

DOI: 10.3892/ol.2011.415

Abstract. Stem cells are thought to contribute to tissue regeneration as well as carcinogenesis. Ulcerative colitis-associated colorectal cancer (UC-CRC) has shown distinct characteristics compared with those of sporadic CRC. The aim of this study was to evaluate the expression of stem cell markers CD133, OCT4 and NANOG in UC-CRC and the inflamed colonic epithelium of UC patients. Total RNAs of UC-CRC (n=6), inflamed colonic epithelium (n=24), sporadic CRC (n=37) and adjacent normal colonic epithelium (n=37) were isolated from formalin-fixed, paraffin-embedded specimens using microdissection techniques in order to purify colonic epithelial cells. Relative mRNA levels of CD133 (*PROM*), OCT4 (*POU5F1*) and *NANOG* were measured using real-time reverse transcription polymerase chain reaction. Three stem cell markers were also investigated immunohistochemically. *PROM*, *POU5F1* and *NANOG* levels were found to be significantly lower in UC-CRC than in inflamed colonic epithelium of UC patients. By contrast, sporadic CRC showed a significantly higher expression of *PROM*, *POU5F1* and *NANOG* compared with adjacent normal colonic epithelium. *POU5F1* and *NANOG* levels were significantly lower in UC-CRC than in sporadic CRC. *PROM* and *NANOG* levels in inflamed colonic epithelium were significantly higher among younger UC patients ($P<0.05$). Longer disease duration was significantly associated with lower *PROM* expression ($P=0.0117$). No significant difference was found in *PROM* levels between UC-CRC and inflamed colonic epithelium in patients with longer disease duration. UC-CRC showed different expres-

sion profiles of stem cell markers compared with sporadic CRC. Decreases in *PROM* expression of inflamed colonic epithelium may identify UC patients at high risk for the development of UC-CRC.

Introduction

Ulcerative colitis (UC) is a chronic inflammatory bowel disease with an increased risk of developing into colorectal cancer (CRC). The meta-analysis by Eaden *et al* reported that the cumulative risk probability of ulcerative colitis-associated CRC (UC-CRC) was 1.6% after 10 years, 8.3% after 20 years, and 18.4% after 30 years of disease duration (1). Risk factors for UC-CRC have been shown to be greater with the extent and duration of disease, increased severity of bowel inflammation, coexisting primary sclerosing cholangitis, young age at onset of UC and family history of sporadic CRC (2).

Typically, UC patients with a higher risk of UC-CRC undergo periodic colonoscopic surveillance with multiple biopsies for the early diagnosis and treatment of dysplasia or cancer lesions. However, such a surveillance program has a number of limitations, including its efficacy, high cost, invasiveness, incomplete patient enrollment, sampling variations and poor agreement in histopathological interpretation (3). A number of molecular markers predictive for UC-CRC have been reported (4-6), but remain unavailable in the practical management of UC patients.

Chronic inflammation in UC is considered to cause colonic epithelial injury, repair and regeneration, or the development of UC-CRC (7). Stem cell (SC) research and the cancer stem cell (CSC) hypothesis have shown that colonic SCs or CSCs are involved in tissue regeneration and colonic carcinogenesis (8-10). CSCs may greatly contribute to inflammation-associated carcinogenesis in UC.

The transcription factors OCT4 and NANOG play significant roles in maintaining pluripotency and self-renewal of embryonic stem cells as well as in adult stem cells (11). OCT4 is a nuclear protein belonging to a family of transcription factors containing the POU DNA-binding domain (12). NANOG is a homeobox transcription factor that contains DNA-binding domains involved in the regulation of key eukaryotic developmental processes (13). CD133 is a cell

Correspondence to: Dr Koji Tanaka, Department of Gastrointestinal and Pediatric Surgery, and Innovative Surgery, Division of Reparative Medicine, Institute of Life Sciences, Mie University Graduate School of Medicine, 2-174 Edobashi, Tsu, Mie 514-8507, Japan
E-mail: qouji@clin.medic.mie-u.ac.jp

Key words: CD133, OCT4, NANOG, ulcerative colitis-associated colorectal cancer, ulcerative colitis

surface glycoprotein with five transmembrane domains. CD133 is currently regarded as one of the most significant markers of colon CSCs (14).

Subsequently, we investigated the expression of stem cell markers in UC-CRC and inflamed colonic epithelium as compared to sporadic CRC. To evaluate the expression levels of each molecule in colonic epithelial cells, microdissection techniques were used for the reduction of the contamination of stromal cells as much as possible.

In the present study, expression levels of *PROM*, *POU5F1* and *NANOG* mRNAs were investigated in UC-CRC, inflamed colonic epithelium, sporadic CRC and adjacent colonic epithelium. Furthermore, the associations between disease characteristics and stem cell marker expression were also examined to evaluate their predictive value for the development of UC-CRC.

Materials and methods

Patients with UC and UC-CRC. A total of 24 UC patients and 6 patients with UC-CRC were included in the current analyses. All patients were treated at the Department of Gastrointestinal and Pediatric Surgery in the Mie University Graduate School of Medicine, Japan.

The UC diagnosis was based on the medical history, endoscopic findings, histological examination, laboratory tests and clinical disease presentation. The extent of disease was defined as proctitis, left-sided and extensive colitis. The severity of disease was classified as 'mild', 'moderate' and 'severe' based on clinical, endoscopic and histopathological findings as discussed above.

Patients with sporadic colorectal cancer. A total of 37 patients with sporadic CRC were also included in this study to compare the expression of stem cell markers between UC-CRC and sporadic CRC.

Sample selection criteria. For inclusion in the study, selection criteria required the availability of samples accompanying complete clinical data and the quality of isolated RNA for real-time PCR based on the expression of the β -actin (*ACTB*) gene as an internal control.

Microdissection of formalin-fixed, paraffin-embedded (FFPE) specimens. To purify colonic epithelial cells or cancer cells, a microdissection technique was used. Surgically resected specimens were fixed in 10% formaldehyde solution v/v and embedded in paraffin. Sections (10 μ m) of FFPE specimens were stained with nuclear fast red. Manual microdissection using a scalpel was performed to collect only inflamed and non-inflamed colonic epithelial or cancer cells, excluding stromal cells as much as possible. Sample collection by microdissection typically ensured >70% of target cells for each sample.

RNA extraction from FFPE specimens. Microdissected samples were digested with proteinase K in lysis buffer containing Tris-HCl, EDTA and sodium dodecyl sulfate as previously reported with minor modifications (15). RNA was purified by phenol and chloroform extraction.

cDNA synthesis. cDNA was synthesized with random hexamer primers and Superscript III reverse transcriptase (Invitrogen, Carlsbad, CA, USA) according to the manufacturer's instructions.

Real-time quantitative RT-PCR. Real-time quantitative RT-PCR analysis was performed with the SYBR-Green PCR master mix using an Applied Biosystems 7500 real-time PCR system according to the manufacturer's instructions (Applied Biosystems, Inc., Foster City, CA, USA). Primers and probes for *PROM* (CD133), *POU5F1* (OCT4), *NANOG* and *ACTB* (β -actin) were designed with primer3 software (Biology Workbench Version 3.2, San Diego Supercomputer Center, University of California, San Diego, CA, USA). Primer sequences were as follows: *PROM*-specific: sense, GCT TTGCAATCTCCCTGTTG and antisense, TTGATCCGG GTTCTTACCTG; *POU5F1*-specific: sense, CTGGAGAAGG AGAAGCTGGA and antisense, CAAATTGCTCGAGTTCT TTCTG; *NANOG*-specific: sense, GAGATGCCTCACACG GAGAC and antisense, CTTTGGGACTGGTGGGAAGAA and *ACTB*-specific: sense, ACAGAGCCTCGCCTTTGC and antisense, GCGGCGATATCATCATCC. PCR was performed in a final volume of 25 μ l with a SYBR-Green PCR master mix using 1 μ l cDNA and 400 nM of each primer for the respective genes. Cycling conditions were 50°C for 2 min and 95°C for 10 min followed by 40 cycles at 95°C for 15 sec and 60°C for 1 min.

Relative mRNA levels of target genes. Relative mRNA levels were determined by the standard curve method. The standard curves and line equations were generated using 5-fold serially diluted solutions of cDNA from the colon cancer cell line LoVo. Standard curves were linear in the analyzed range with an acceptable correlation coefficient (R²). The amount of target gene expression was calculated from the standard curve. Quantitative normalization of cDNA in each sample was performed using the expression of the *ACTB* gene as an internal control. mRNA levels of target genes were then provided as ratios to *ACTB* mRNA levels. Real-time PCR assays were performed in duplicate for each sample and the mean values were used for calculations of the mRNA levels.

Immunohistochemical staining for CD133, OCT4 and NANOG in UC and CRC. Sections (2 μ m) of formalin-fixed, paraffin-embedded specimens were produced. After deparaffinization and dehydration for antigen unmasking, sections were brought to a boil in 10 mM sodium citrate buffer. Sections were then blocked and incubated with primary antibody overnight at 4°C. The antibody was detected by Envision reagents (Envision kit/HRP, Dako Cytomation, Denmark). Sections were counterstained with hematoxylin. Primary anti-CD133 rabbit monoclonal antibody (C24B9, Cell Signaling Technology Inc., Danvers, MA, USA), anti-OCT4 goat polyclonal antibody (C20, sc8629, Santa Cruz Biotechnology, Santa Cruz, CA, USA), and anti-NANOG rabbit polyclonal antibody (ab21603, Abcam plc, Cambridge, UK) were used at a dilution of 1:100, and detected with the streptavidin biotin method (LASB2 kit/HRP, Dako Cytomation, Denmark). Negative controls were run simultaneously with pre-immune immunoglobulin.

Table I. Clinical characteristics of UC-CRC and UC patients.

Variable	UC-CRC (n=6)	UC (n=24)
Gender		
Male	3 (50%)	14 (58%)
Female	3 (50%)	10 (42%)
Age, mean (range)	39 (28-51)	32 (17-56)
Age at diagnosis mean (range)	31 (18-50)	26 (13-50)
Duration of disease median (range)	11 (1-19)	6 (0.1-28)
Extent of disease		
Proctitis	0 (0%)	0 (0%)
Left-sided colitis	2 (33%)	5 (21%)
Extensive colitis	4 (67%)	19 (79%)
Severity of inflammation		
Mild	3 (50%)	1 (0.4%)
Moderate	3 (50%)	17 (74.6%)
Severe	0 (0%)	6 (25%)

UC-CRC, ulcerative colitis-associated colorectal cancer; and UC, ulcerative colitis.

Statistical analysis. All statistical analyses were performed using JMP version 5 (SAS Institute Inc. Cary, NC, USA). Relative mRNA levels of each gene were expressed as median values (inter-quartile range).

Associations between gene expression levels (continuous variables) and groups (categorical variables) were evaluated using Mann-Whitney U tests for two groups or Kruskal-Wallis tests for multiple groups.

Box and whisker plots were used to summarize the distribution of mRNA levels of *PROM*, *POU5F1* and *NANOG* for each group. The horizontal line in the box represents the 50th quartile (median), and the upper and lower lines of the box represent 75th and 25th quartiles, respectively. The whiskers indicate the range of the measurements. $P < 0.05$ was considered to be statistically significant.

Results

Clinical characteristics of UC-CRC and UC patients. The mean age of six UC-CRC patients (3 men and 3 women) was 39 years (range 28-51). Among the 6 patients, 3 (50%) had extensive colitis and 3 (50%) had left-sided colitis. The median duration of disease was 11 years (range 1-19).

The mean age of the 24 UC patients (14 men and 10 women) was 32 years (range 17 to 56 years). Among the 24 patients with UC, 19 had extensive colitis and 5 had left-sided colitis. The median duration of disease was 6 years (range 0.1-28) (Table I).

Clinical characteristics of UC-CRC and sporadic CRC patients. In the UC-CRC patients, the primary tumor was located in the rectum (n=3) or the colon (n=3). Pathological

Table II. Clinicopathological characteristics of UC-CRC and sporadic CRC patients.

Variable	UC-CRC (n=6)	Sporadic CRC (n=37)
Gender		
Male	3 (50%)	26 (70%)
Female	3 (50%)	11 (30%)
Age, mean (range)	39 (28-51)	63 (37-82)
Tumor location		
Rectum	3 (50%)	26 (70%)
Colon	3 (50%)	11 (30%)
Tumor invasion		
pT1	2 (33%)	3 (8%)
pT2	0 (0%)	6 (16%)
pT3	4 (67%)	25 (68%)
pT4	0 (0%)	3 (8%)
Lymph node metastasis		
Present	0 (0%)	21 (57%)
Absent	6 (100%)	16 (43%)
Histological differentiation		
Well	2 (34%)	19 (51%)
Moderate	1 (17%)	15 (40%)
Poor	3 (49%)	3 (9%)
Dukes' classification		
A	2 (33%)	7 (19%)
B	4 (67%)	7 (19%)
C	0 (0%)	12 (32%)
D	0 (0%)	11 (30%)

T status (pT) of UC-CRC was pT1 (n=2) and pT3 (n=4). The UC-CRC were well differentiated (n=2, 34%), moderately differentiated (n=1, 17%) or poorly/undifferentiated (n=3, 49%). Two patients with UC-CRC were staged as Dukes' A and 4 patients as Dukes' B.

In sporadic CRC patients, the mean age of 37 patients (26 men and 11 women) was 63 years (range 37-82). These tumors were located in the rectum (n=26) or the colon (n=11). Distribution of pTs were pT1 (8%), pT2 (16%), pT3 (68%) and pT4 (8%). A total of 21 patients (57%) had pathological lymph node metastases. The tumors were well-differentiated (n=19, 51%), moderately differentiated (n=15, 40%) or poorly/undifferentiated (n=3, 9%). Seven patients with sporadic CRC were staged as Dukes' A, 7 as Dukes' B, 12 as Dukes' C and 11 as Dukes' D (Table II).

Levels of stem cell markers in UC-CRC and inflamed colonic epithelium. The relative mRNA levels of *PROM*, *POU5F1* and *NANOG* were expressed as ratios between the gene of interest (*PROM*, *POU5F1* and *NANOG*) and the internal reference gene (*ACTB*), providing a normalization factor for the amounts of the mRNAs.

Table III shows the median value (inter-quartile range) for each gene in UC-CRC and inflamed colonic epithelium. As shown in Fig. 1A, *PROM*, *POU5F1* and *NANOG* were significantly lower in colitis-associated CRC than in inflamed colonic epithelium ($P=0.0335$ for *PROM*, $P=0.0011$ for *POU5F1* and $P=0.006$ for *NANOG*).

Levels of stem cell markers in sporadic CRC and adjacent normal epithelium. Table IV shows the median value (inter-quartile range) of each gene in sporadic CRC and the adjacent normal epithelium. As shown in Fig. 1B, *PROM*, *POU5F1* and *NANOG* were significantly higher in sporadic CRC than in adjacent normal colonic epithelium ($P=0.0001$ for *PROM*, $P=0.0423$ for *POU5F1* and $P=0.0416$ for *NANOG*).

Comparison of PROM, POU5F1 and NANOG in UC-CRC and sporadic CRC. Fig. 1C shows that *POU5F1* and *NANOG* mRNA levels were significantly lower in colitis-associated CRC than in sporadic CRC ($P=0.0097$ for *POU5F1*, and $P=0.0189$ for *NANOG*). No significant difference was observed in *PROM* between colitis-associated and sporadic CRC.

Immunoreactive CD133, OCT4 and NANOG in UC-CRC and sporadic CRC. Fig. 2 shows that the expression of CD133, OCT4 and NANOG proteins was also lower in UC-CRC than in sporadic CRC.

Immunoreactive CD133 protein was observed in a minority of CRC cells. CD133 was located at the apical/endoluminal surface (membranous), in the cytoplasm (cytoplasmic) or in both sites, for CRC cells (Fig. 4).

In UC-CRC and sporadic CRC, OCT4 was found in the cytoplasm of cancer cells. Although germ cell tumors have been reported to show strong nuclear OCT4 immunostaining, colorectal cancer cells had diffuse cytoplasmic OCT4 staining.

Diffuse cytoplasmic NANOG protein was detected in UC-CRC cells. Sporadic CRC cells showed, not only cytoplasmic, but also nuclear NANOG immunoreactivity.

Association between CD133, OCT4, and NANOG in inflamed colonic epithelium and disease or patient characteristics. The expression of CD133 and NANOG proteins in inflamed colonic epithelium was significantly higher among younger UC patients ($P<0.05$) (Fig. 3). CD133 in inflamed colonic epithelium was significantly associated with the duration of colitis. Based on the median value of the duration of colitis, 24 patients were divided into two groups (shorter duration colitis, $n=13$; and longer duration colitis, $n=11$). As shown in Fig. 4, patients with shorter periods of colitis showed a higher CD133 expression than patients with colitis of longer duration ($P=0.0117$) or patients with UC-CRC ($P=0.0226$). No significant difference in CD133 levels was found between UC-CRC patients and longer duration colitis patients.

Immunohistochemical staining of CD133 in inflamed colonic epithelium. In UC patients, the minority of inflamed colonic epithelial cells expressed immunoreactive CD133 protein (Fig. 5). CD133 was observed diffusely in the cytoplasm of epithelial cells and was also located at the apical/endoluminal surface (membranous), in the cytoplasm or in both sites, of inflamed colonic epithelial cells.

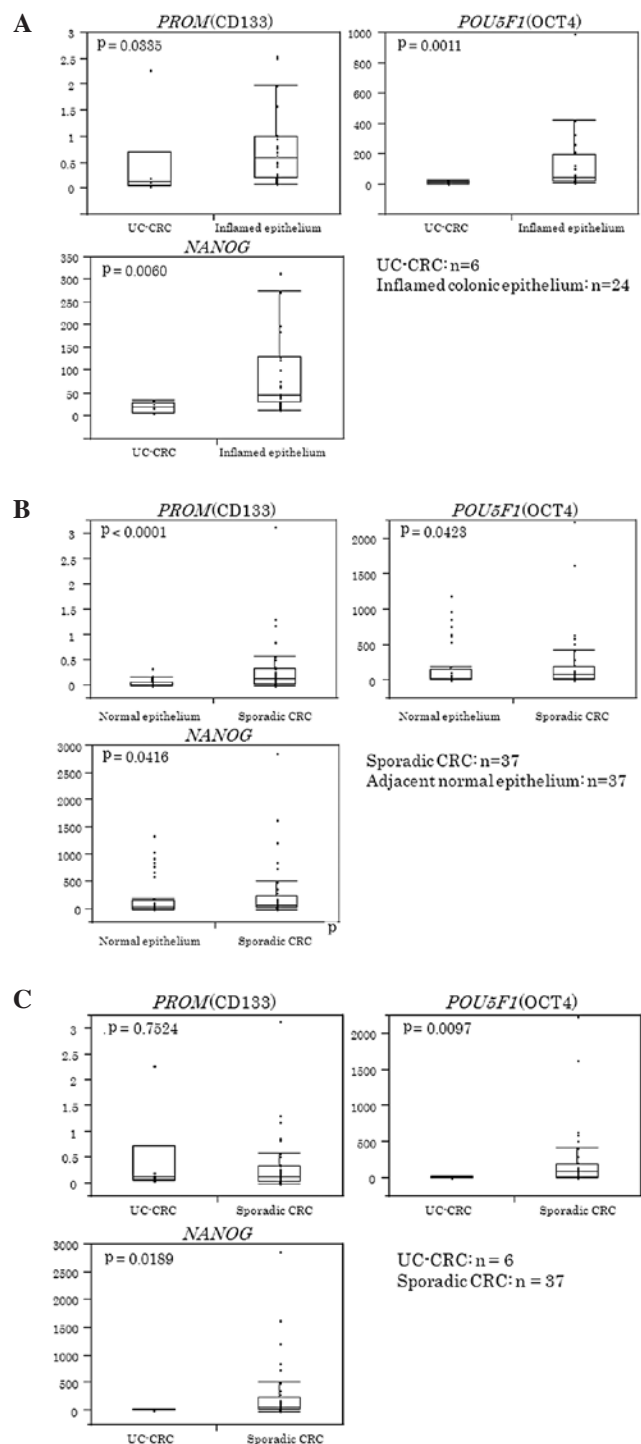


Figure 1. (A) Expression of stem cell markers in UC-CRC and inflamed colonic epithelium. Expression of *PROM*, *POU5F1* and *NANOG* were significantly lower in UC-CRC than in inflamed colonic epithelium ($P=0.0335$ for *PROM*, $P=0.0011$ for *POU5F1* and $P=0.006$ for *NANOG*). Box and whisker plots were used to show the distribution of mRNA levels of *PROM*, *POU5F1* and *NANOG* for each group. The horizontal line in the box represents the 50th (median) and the upper and lower lines of the box represent the 75th and 25th quartiles, respectively. The whiskers indicate the range of the measurements. (B) Levels of stem cell markers in sporadic CRC and adjacent normal epithelium. *PROM*, *POU5F1* and *NANOG* were significantly higher in sporadic CRC than in adjacent normal colonic epithelium ($P=0.0001$ for *PROM*, $P=0.0423$ for *POU5F1* and $P=0.0416$ for *NANOG*). (C) Comparison of *PROM*, *POU5F1* and *NANOG* in UC-CRC and sporadic CRC. *POU5F1* and *NANOG* levels were significantly lower in colitis-associated CRC than in sporadic CRC ($P=0.0097$ for *POU5F1*, and $P=0.0189$ for *NANOG*). No significant difference was observed in *PROM* between colitis-associated and sporadic CRC.

Table III. Stem cell markers in UC-CRC and inflamed colonic epithelium.

Stem cell maker	UC-CRC (n=6)	Inflamed colonic epithelium (n=24)
<i>PROM</i> (CD133, range)	0.138 (0.065-0.725)	0.590 (0.205-1.006)
<i>POU5F1</i> (OCT4, range)	11.84 (8.298-18.12)	44.59 (24.26-196.7)
<i>NANOG</i>	19.15 (6.998-28.54)	46.16 (30.08-130.2)

Values of each target gene are expressed as the median value (inter-quartile range).

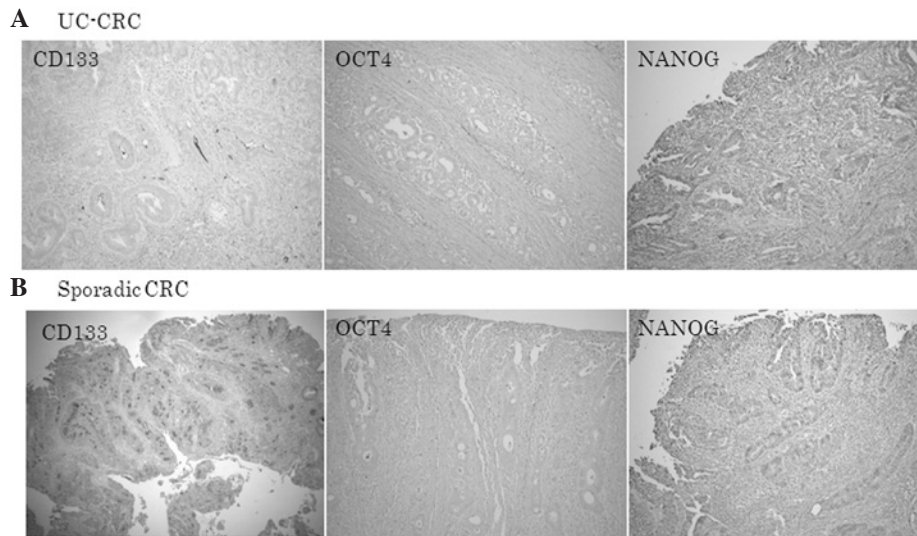


Figure 2. Immunoreactive CD133, OCT4 and NANOG in UC-CRC and sporadic CRC. The expression of CD133, OCT4, and NANOG proteins was decreased in (A) UC-CRC compared with (B) sporadic CRC. Original magnification, x40.

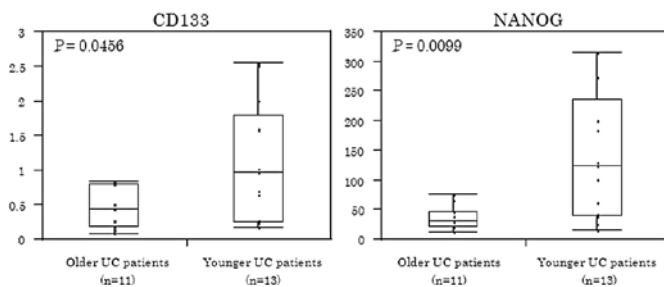


Figure 3. CD133 and NANOG in inflamed colonic epithelium according to patients' age. CD133 and NANOG in inflamed colonic epithelium were expressed at significantly higher levels among younger UC patients ($P < 0.05$).

Discussion

To the best of our knowledge, no report has investigated the expression of the three stem cell markers considered in this study in the context of UC-CRC or inflamed colonic epithelium, compared to sporadic CRC.

Stem cells capable of self-renewal and pluripotency contribute to normal tissue development, regeneration and disease (16). Recently, the CSC concept has been advanced through the use of isolation techniques dependent upon cell surface markers for putative CSCs and functional assays of stem/progenitor cell properties in non-obese diabetic severe

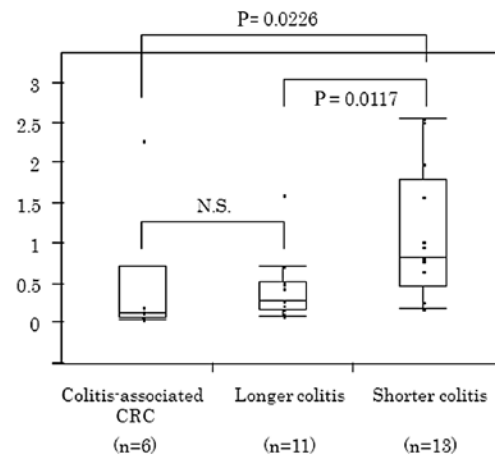


Figure 4. CD133 levels in inflamed epithelium according to disease duration. CD133 in inflamed colonic epithelium was significantly associated with the duration of colitis. Patients with longer duration colitis showed a significantly lower CD133 expression than those with shorter duration colitis ($P = 0.0117$).

combined immunodeficient mice (17,18). CD133 is one of the most significant cell surface markers of colon CSCs (19). A recent report showed that CD133 immunoreactivity was associated with poor survival in sporadic CRC (14). *POU5F1* and *NANOG* play significant roles in maintaining pluripotency and self-renewal of SCs (11). Although each stem cell marker

Table IV. Stem cell markers in sporadic CRC and normal colonic epithelium.

Stem cell maker	Sporadic CRC (n=6)	Normal colonic epithelium (n=37)
<i>PROM</i> (CD133, range)	0.274 (0.137-0.830)	0.129 (0.033-0.345)
<i>POU5F1</i> (OCT4, range)	29.48 (11.74-61.20)	91.00 (24.80-197.0)
<i>NANOG</i>	31.47 (17.44-74.69)	70.70 (26.50-246.2)

Values of each target gene are expressed as the median value (inter-quartile range).

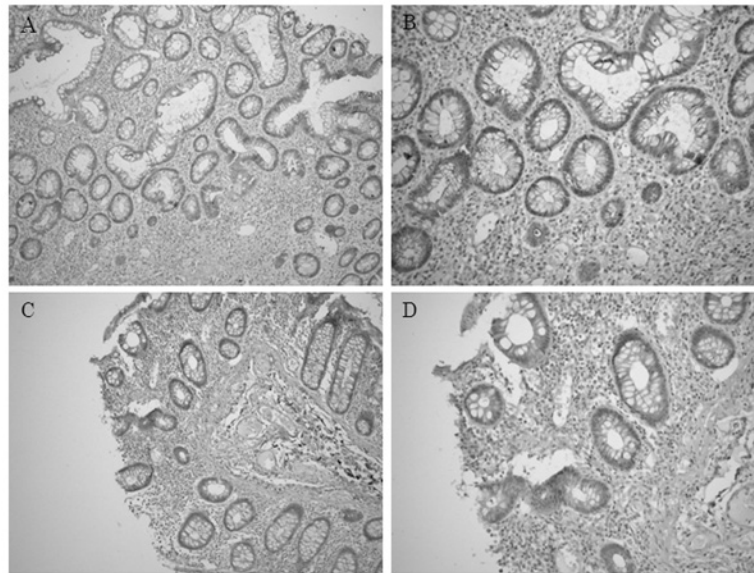


Figure 5. Immunohistochemical staining of CD133 in inflamed colonic epithelium. In inflamed colonic epithelial cells, CD133 was located at the apical/endoluminal surface (membranous) or in the cytoplasm or both sites. Original magnification, (A and C) x100; (B and D) x200.

has been reported to be expressed in certain human malignancies, the clinical significance of these stem cell markers in UC-CRC has yet to be established.

We demonstrated that UC-CRC had a significantly lower expression of *PROM*, *POU5F1* and *NANOG* genes compared to inflamed colonic epithelium, whereas sporadic CRC had a significantly higher expression of these genes compared to adjacent normal colonic epithelium. UC-CRC has been reported to develop along a different genetic pathway compared to sporadic CRC. Previous studies showed that mutations of the TP53 (p53) gene were observed in the early stage, and adenomatous polyposis coli gene or k-ras gene mutations were less frequent events in UC-CRC (20-22). Although UC-CRC appears to have a completely different carcinogenic pathway from sporadic CRC, the mechanisms underlying these differences are not understood. Our stem cell marker analysis may support this concept, showing genetic or carcinogenic differences between UC-CRC and sporadic CRC. Another possible interpretation of our results is that colonic SCs or CSCs scarcely contribute to UC-associated carcinogenesis relative to sporadic CRC. However, further analyses are required to address the reason for stem cell markers being lower in UC-CRC compared with sporadic CRC or inflamed colonic epithelium.

We also demonstrated that the CD133 level in inflamed colonic epithelium was significantly lower in UC patients with a longer duration of disease than those with a shorter duration. These results indicate that decreased CD133 levels in the colonic mucosa of UC patients may identify patients at higher risk for developing UC-CRC.

Periodic surveillance colonoscopy with two to four random biopsies collected at 10 cm intervals throughout the entire colon is now highly recommended for the early detection of UC-CRC (23). To increase the macroscopic detection rate of precancerous or dysplastic lesions, methylene blue or indigo carmine chromoendoscopy with careful inspection have also been utilized (24,25). However, current surveillance systems are unsatisfactory for the detection of dysplasia and early-stage UC-CRC due to the difficulties associated with endoscopic or histological assessment.

The analysis of the CD133 level in colonoscopic biopsy specimens in addition to conventional cancer risk evaluation may increase the identification rate of patients who are likely to develop UC-CRC. If reliable and reproducible evaluation criteria for immunohistochemical CD133 expression are established for inflamed colonic mucosa, it may be an easy and useful supplementary method to predict the development of UC-CRC.

However, our data should be interpreted with caution. A significant limitation of this study was the relatively small number of UC patients (n=30), including only six patients with UC-CRC. Large prospective trials are required to confirm our results.

In conclusion, UC-CRC showed different expression profiles of stem cell markers compared with sporadic CRC. A decreased CD133 expression in inflamed colonic epithelium may identify UC patients at a high risk for the development of UC-CRC.

References

- Eaden JA, Abrams KR and Mayberry JF: The risk of colorectal cancer in ulcerative colitis: a meta-analysis. *Gut* 48: 526-535, 2001.
- Zisman TL and Rubin DT: Colorectal cancer and dysplasia in inflammatory bowel disease. *World J Gastroenterol* 14: 2662-2669, 2008.
- Gupta RB, Harpaz N, Itzkowitz S, Hossain S, Matula S, Kornbluth A, Bodian C and Ullman T: Histologic inflammation is a risk factor for progression to colorectal neoplasia in ulcerative colitis: a cohort study. *Gastroenterology* 133: 1099-1105, 2007.
- Watanabe T, Kobunai T, Toda E, *et al*: Gene expression signature and the prediction of ulcerative colitis-associated colorectal cancer by DNA microarray. *Clin Cancer Res* 13: 415-420, 2007.
- Fujii S, Tominaga K, Kitajima K, *et al*: Methylation of the oestrogen receptor gene in non-neoplastic epithelium as a marker of colorectal neoplasia risk in longstanding and extensive ulcerative colitis. *Gut* 54: 1287-1292, 2005.
- Nishikawa M, Oshitani N, Matsumoto T, Nishigami T, Arakawa T and Inoue M: Accumulation of mitochondrial DNA mutation with colorectal carcinogenesis in ulcerative colitis. *Br J Cancer* 93: 331-337, 2005.
- Bartsch H and Nair J: Chronic inflammation and oxidative stress in the genesis and perpetuation of cancer: role of lipid peroxidation, DNA damage, and repair. *Langenbecks Arch Surg* 391: 499-510, 2006.
- Boman BM and Huang E: Human colon cancer stem cells: a new paradigm in gastrointestinal oncology. *J Clin Oncol* 26: 2828-2838, 2008.
- Vermeulen L, Sprick MR, Kemper K, Stassi G and Medema JP: Cancer stem cells – old concepts, new insights. *Cell Death Differ* 15: 947-958, 2008.
- Shipitsin M and Polyak K: The cancer stem cell hypothesis: in search of definitions, markers, and relevance. *Lab Invest* 88: 459-463, 2008.
- Liang J, Wan M, Zhang Y, *et al*: Nanog and Oct4 associate with unique transcriptional repression complexes in embryonic stem cells. *Nat Cell Biol* 10: 731-739, 2008.
- Tai MH, Chang CC, Kiupel M, Webster JD, Olson LK and Trosko JE: Oct4 expression in adult human stem cells: evidence in support of the stem cell theory of carcinogenesis. *Carcinogenesis* 26: 495-502, 2005.
- Wang J, Levasseur DN and Orkin SH: Requirement of Nanog dimerization for stem cell self-renewal and pluripotency. *Proc Natl Acad Sci USA* 105: 6326-6331, 2008.
- Horst D, Kriegl L, Engel J, Kirchner T and Jung A: CD133 expression is an independent prognostic marker for low survival in colorectal cancer. *Br J Cancer* 99: 1285-1289, 2008.
- Bijwaard KE, Aguilera NS, Monczak Y, Trudel M, Taubenberger JK and Lichy JH: Quantitative real-time reverse transcription-PCR assay for cyclin D1 expression: utility in the diagnosis of mantle cell lymphoma. *Clin Chem* 47: 195-201, 2001.
- Lanzoni G, Roda G, Belluzzi A, Roda E and Bagnara GP: Inflammatory bowel disease: Moving toward a stem cell-based therapy. *World J Gastroenterol* 14: 4616-4626, 2008.
- Ricci-Vitiani L, Lombardi DG, Pilozzi E, *et al*: Identification and expansion of human colon-cancer-initiating cells. *Nature* 445: 111-115, 2007.
- O'Brien CA, Pollett A, Gallinger S and Dick JE: A human colon cancer cell capable of initiating tumour growth in immunodeficient mice. *Nature* 445: 106-110, 2007.
- Ieta K, Tanaka F, Haraguchi N, *et al*: Biological and genetic characteristics of tumor-initiating cells in colon cancer. *Ann Surg Oncol* 15: 638-648, 2008.
- Brentnall TA, Crispin DA, Rabinovitch PS, *et al*: Mutations in the p53 gene: an early marker of neoplastic progression in ulcerative colitis. *Gastroenterology* 107: 369-378, 1994.
- Tarmin L, Yin J, Harpaz N *et al*: Adenomatous polyposis coli gene mutations in ulcerative colitis-associated dysplasias and cancers versus sporadic colon neoplasms. *Cancer Res* 55: 2035-2038, 1995.
- Chaubert P, Benhattar J, Saraga E and Costa J: K-ras mutations and p53 alterations in neoplastic and nonneoplastic lesions associated with longstanding ulcerative colitis. *Am J Pathol* 144: 767-775, 1994.
- Farrell RJ and Peppercorn MA: Ulcerative colitis. *Lancet* 359: 331-340, 2002.
- Matsumoto T, Nakamura S, Jo Y, Yao T and Iida M: Chromoscopy might improve diagnostic accuracy in cancer surveillance for ulcerative colitis. *Am J Gastroenterol* 98: 1827-1833, 2003.
- Rutter MD, Saunders BP, Schofield G, Forbes A, Price AB and Talbot IC: Pancolonial indigo carmine dye spraying for the detection of dysplasia in ulcerative colitis. *Gut* 53: 56-260, 2004.