
A c-DNA probe for the oncogene c-MEL (pC7-1) recognises a polymorphism with NcoI

Elaine R.Nimmo, Rose Ann Padua^{1,2}, David Hughes^{1,2}, Robert Williamson and Keith Johnson

Department of Biochemistry, St. Mary's Hospital Medical School, Norfolk Place, London W2 1PG and ¹Marie Curie Memorial Foundation, Research Institute, The Chart, Oxted, Surrey RH8 0TL, UK

SOURCE AND DESCRIPTION. A 2kb EcoRI fragment of the human MEL oncogene c-DNA inserted into pEMBL8.

POLYMORPHISM. NcoI (C/CATGG) identifies two alleles with bands at 4.0kb and 3.8kb. Constant bands of 8kb, 4.3kb, 2.45kb, 2.1kb and 1.95kb are seen.

FREQUENCIES. Studied in 32 unrelated individuals.

4.0kb allele	73.4%
3.8kb allele	26.6%

NOT POLYMORPHIC FOR. AccI, AluI, AvaI, AvaII, BamHI, BclI, BglI, BglII, ClaI, EcoRI, HaeIII, HincII, HindIII, HinfI, HpaI, HpaII, KpnI, MspI, PstI, PvuI, PvuII, RsaI, SalI, Sau3A, SmaI, TaqI, TthIII, XbaI, XhoI.

CHROMOSOMAL LOCATION. Localized to chromosome 19 using a panel of human-hamster and human-mouse hybrids.

MENDELIAN INHERITANCE. Co-dominant segregation demonstrated in 4 families.

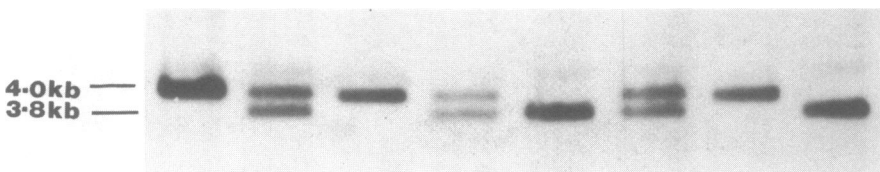
PROBE AVAILABILITY. Available for collaborators, contact D.Hughes or R.A.Padua.

OTHER COMMENTS. Wash at 65 C, 0.1 X SSC.

REFERENCES.

Padua RA, Barras N, and Currie GA (1984) Nature 311 671-673.
 Spurr NK, Hughes D, Goodfellow PN, Brook JD and Padua RA (1986) Somat. Cell Mol. Genet. 12 637-640.

ACKNOWLEDGEMENTS. This work was supported by the Leukaemia Research Fund. Grant No. 86/18.



²Present address: University of Wales College of Medicine, Department of Haematology, Heath Park, Cardiff, CF4 4XN