

Erratum

The gapped duplex DNA approach to oligonucleotide-directed mutation construction

by W.Kramer, V.Drutsa, H.-W.Jansen, B.Kramer, M.Pflugfelder and H.-J.Fritz

Nucleic Acids Research, 12, 9441-9456 (1984)

Figure 3 of the above paper is reprinted below due to loss of detail during the original printing.

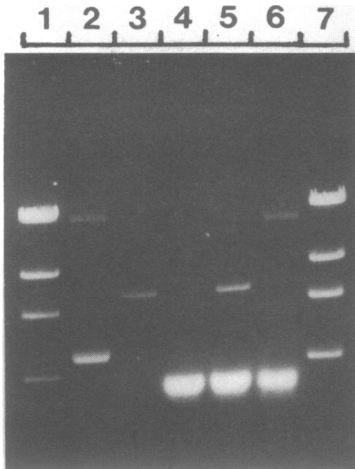


fig. 3: Gel electrophoretic analysis of different intermediates in the construction of gdDNA. lane 1 and 7: λ DNA, digested with HindIII; lane 2: RF-DNA of M13mp9rev; lane 3: RF-DNA of M13mp9rev digested with EcoRI and PvuI; lane 4: ssDNA of M13mp9; lane 5: M13mp9rev, large EcoRI/PvuI fragment and ssDNA of M13mp9; lane 6: same DNAs as in lane 5 but after thermal denaturation/renaturation.

Publisher's note

The publisher recommends that papers containing detailed photographs should be printed on smooth coated paper to improve the quality of reproduction.