

RESEARCH ARTICLE

Open Access

Electrocardiographic abnormalities in centenarians: impact on survival

Ramón Rabuñal-Rey^{1*}, Rafael Monte-Secades¹, Adriana Gomez-Gigirey², Sonia Pértega-Díaz³, Ana Testa-Fernández⁴, Salvador Pita-Fernández³ and Emilio Casariego-Vales¹

Abstract

Background: The centenarian population is gradually increasing, so it is becoming more common to see centenarians in clinical practice. Electrocardiogram abnormalities in the elderly have been reported, but several methodological biases have been detected that limit the validity of their results. The aim of this study is to analyse the ECG abnormalities in a prospective study of the centenarian population and to assess their impact on survival.

Method: We performed a domiciliary visit, where a medical history, an ECG and blood analysis were obtained. Barthel index (BI), cognitive mini-exam (CME) and Charlson index (ChI) were all determined. Patients were followed up by telephone up until their death.

Results: A total of 80 centenarians were studied, 26 men and 64 women, mean age 100.8 (SD 1.3). Of these, 81% had been admitted to the hospital at least once in the past, 81.3% were taking drugs (mean 3.3, rank 0–11). ChI was 1.21 (SD 1.19). Men had higher scores both for BI (70 -SD 34.4- vs. 50.4 -SD 36.6-, $P = .005$) and CME (16.5 -SD 9.1- vs. 9.1 -SD 11.6-, $P = .008$); 40.3% of the centenarians had anaemia, 67.5% renal failure, 13% hyperglycaemia, 22.1% hypoalbuminaemia and 10.7% dyslipidaemia, without statistically significant differences regarding sex. Only 7% had a normal ECG; 21 (26.3%) had atrial fibrillation (AF), 30 (37.5%) conduction defects and 31 (38.8%) abnormalities suggestive of ischemia, without sex-related differences. A history of heart disease was significantly associated with the presence of AF ($P = .002$, OR 5.2, CI 95% 1.8 to 15.2) and changes suggestive of ischemia ($P = .019$, OR 3.2, CI 95% 1.2-8.7). Mean survival was 628 days (SD 578.5), median 481 days. Mortality risk was independently associated with the presence of AF (RR 2.0, $P = .011$), hyperglycaemia (RR 2.2, $P = .032$), hypoalbuminaemia (RR 3.5, $P < .001$) and functional dependence assessed by BI (RR 1.8, $P = .024$).

Conclusion: Although ECG abnormalities are common in centenarians, they are not related to sex, functional capacity or cognitive impairment. The only abnormality that has an impact on survival is AF.

Background

The centenarian population is gradually increasing, so it is becoming more common to see centenarians in clinical practice [1]. These patients have their own characteristics that are different compared to the "younger" elderly. Thus, a lower prevalence of diabetes mellitus [2], or an improved cardiovascular risk profile [3] in this group has been reported.

Electrocardiogram abnormalities (ECG) in the elderly are extensively reported [4-6]. They are frequent and

arrhythmias and repolarisation abnormalities predominate. These studies mostly include population aged between 65 and 90 years old. By contrast, studies that analyse changes in the electrocardiogram in centenarians are rare. These studies report similar abnormalities but more often than those found in younger elderly. However, their sample size is low and several methodological biases have been detected (retrospective, no systematic assessments, etc.) that limit the validity of their results [7-14].

The aim of this study is to analyse the ECG abnormalities in a prospective study of the centenarian population in our health setting [15], their frequency, their relationship with sex and functional capacity and their value as a predictor of survival.

* Correspondence: ramon.rabunal.rey@sergas.es

¹Internal Medicine Department, Lucus Augusti University Hospital (HULA), SERGAS, San Cibrao, s/n 27003, Lugo, Spain

Full list of author information is available at the end of the article

Methods

Prospective follow-up observational study of 99-year-old and older patients living in the Lugo area (Galicia, north-west Spain), covering a population of 221,907 inhabitants. In January 2001, the information of all 99-year-old and older patients in this area was obtained from the National Health System register. After contact with the patients and/or their main caregiver, they were informed about the aims of the study and their consent to participate was requested. We conducted a domiciliary visit by a doctor and a nurse, who completed the study protocol, which included demographic data, medical history and physical examination. Barthel Index (BI) of basic activities of daily living [16], the cognition mini-exam (CME) (Spanish version of the Folstein Mini-mental State Exam) [17] and the Charlson Comorbidity Index (ChI) [18] were all determined. We performed a resting 12-lead ECG, and blood samples were obtained. Finally, when available, the hospital medical records were reviewed to confirm and complete the information obtained at home. Patients were monitored by telephone up until their death. The study was approved by the Galicia Clinical Research Ethics Committee.

The ECG was analysed independently by two researchers, according to the classification included in the Minnesota code [19]. Discrepancies were resolved by a second joint review of the ECG.

The following definitions were established: heart disease: clearly documented history of ischemic heart disease or heart failure; hypertension: systolic blood pressure > 140 mmHg or diastolic > 90 mmHg; functional dependence: BI score \leq 60; cognitive impairment: CME score < 20; anaemia: haemoglobin < 13 g/L in men or < 12 g/L in women; renal failure: estimated glomerular filtration rate (MDDR-4) < 60 mL/min/1.73 m²; hyperglycaemia: fasting glucose > 126 mg/dL; hypoalbuminaemia: albumin < 3.5 g/dL; dyslipidaemia: total cholesterol > 220 mg/dL.

Statistical analysis: a descriptive study of the variables included in the study was performed. Quantitative variables were expressed as mean and standard deviation (SD). Qualitative variables were expressed as absolute value and percentage. In the univariate analysis we performed the comparison of numerical parameters between test groups using the student *t* test or Mann Whitney test, as appropriate, after verification of normality using the Kolmogorov-Smirnov test. For the comparison of qualitative variables, the chi square test was performed, Fisher's exact test was used when the cells contained expected values less than five. Kaplan-Meier analysis was used to study survival, comparing survival between groups by the log-rank test. To study the combined effect of several variables in the forecast, we used a Cox regression model, considering the maximum model to be those variables statistically significant in the

univariate analysis. Statistical significance was set at $P < .05$. Statistical analysis was performed using SPSS 17.0 for Windows.

Results

Of a total population of 84 centenarians, 80 (95.2%) agreed to participate in the study, 26 men and 64 women, mean age of 100.8 (SD 1.3). Table 1 shows the clinical features of the series. Only nine patients did not have a prior diagnosis of cardiovascular disease, dementia or cancer and had a good functional status.

Only seven patients (8%) had a completely normal ECG. No cases of atrial flutter were registered. Atrial fibrillation (AF) was found in 21 patients (26.3%), AV conduction defect in nine (11.3%), ventricular conduction disturbance in 26 (32.5%), and changes suggestive of ischaemia (abnormal repolarisation patterns or Q/QS) in 31 patients (38.8%). No statistically significant differences were found for any of the parameters studied regarding sex (Table 2).

A history of heart disease was significantly associated with the presence of AF ($P = .002$, OR 5.2, 95% CI 1.8 to 15.2) and with changes suggestive of ischemia ($P = .019$, OR 3.2, 95% CI 1.2-8.7), both ST segment depression ($P = .003$) and a Q/QS pattern ($P = .007$).

Dependent patients for activities of daily living (BI \leq 60) showed, compared to independent patients, a higher frequency of AF (32.4% vs. 20.9%), abnormal axis (40.5% vs. 27.9%), AV conduction defects (16.2% vs. 7%) and repolarisation abnormalities (37.8% vs. 25.6%), but statistically significant differences were not found. ECG changes suggesting ischemic disease (ST depression or Q/QS pattern) or conduction defects were more common in patients with cognitive impairment, but differences were not statistically significant. Table 3 shows the differences between some ECG abnormalities according to the presence of cognitive impairment and functional dependence.

Mean survival was 628 days (SD 578.5), median 481 days, with no statistical differences between sexes. Table 4 shows survival in days according to the presence or absence of abnormalities in the basal ECG. In the univariate analysis, among the abnormalities in the basal ECG, those significantly associated with lower survival were AF (median survival: 191 vs. 603 days, $P = .011$) (Figure 1) and ST depression (median survival: 191 vs. 603 days, $P = .004$).

A logistic regression model was applied for multivariate analysis. In obtaining the maximum model, the factors that proved significant in the univariate analysis were used as well as those variables thought to possibly influence final results: age, sex, history of cardiovascular disease, stroke or dementia, BMI < 20, anaemia, leukocytosis, hyperglycaemia, hypoalbuminaemia, increased ferritin, dyslipidaemia, atrial fibrillation, ST depression, comorbidity, functional dependence and cognitive impairment.

Table 1 Clinical variables of centenarians in the series according to sex

	Total No.	Mean	SD	Male No.	Mean	SD	Female No.	Mean	SD	P
BMI	71	24.1	4.3	23	24.8	3.8	48	23.8	4.5	.388
BPs	77	131.7	21.2	24	139.3	26.0	53	128.3	17.9	.223
BPd	77	73.0	12.7	24	74.4	14.5	53	72.4	11.9	.411
HR	80	77.0	14.5	26	74.1	11.8	54	78.3	15.5	.224
	No.	%		No.	%		No.	%		
Smoker	17	21.3%		17	65.4%		0	0%		.000
Diabetes mellitus	9	11.3%		3	11.5%		6	11.1%		.999
Hypertension	21	26.3%		3	11.5%		18	33.3%		.056
Dyslipaemia	3	3.8%		2	7.7%		1	1.9%		.245
CVD	24	30.0%		5	19.2%		19	35.2%		.145
Dementia	26	32.5%		5	19.2%		21	38.9%		.079
Prior hospital admission	65	81.3%		23	88.5%		42	77.8%		.363
Drugs*	65	81.3%		19	73.1%		46	85.2%		.194
	No.	%		No.	%		No.	%	OR (CI)	
Charlson index score ≥ 2	26	32.5%		9	34.6%		17	31.5%	0.9 (0.3-2.3)	.779
Barthel index score ≤ 60	37	46.3%		8	30.8%		29	53.7%	0.4 (0.1-1.03)	.054
Cognition miniexam score < 20	57	71.3%		12	46.2%		45	83.3%	0.2 (2.0-16.7)	.001
Anaemia	31	40.3%		13	50%		18	35.3%	0.5 (0.2-1.4)	.230
Hyperglycaemia	10	13%		2	7.7		8	15.7	2.2 (0.4-11.4)	.480
Renal failure	52	67.5%		14	53.8%		38	74.5%	2.5 (0.9-6.8)	.067
Dyslipidaemia	8	10.7%		4	16.0%		4	8.0%	0.5 (0.1-2.0)	.429
Hypoalbuminaemia	17	22.1%		7	26.9%		10	19.6%	0.7 (0.2-2.0)	.464

*mean 3.2 (SD 2.1) drugs per patient (rank 0–11).

Abbreviations: BPd: diastolic blood pressure; BPs: systolic blood pressure. BMI: body mass index; CI: 95% confidence interval; CVD: cardiovascular disease; HR: heart rate; OR: Odds ratio; SD: standard deviation.

Anaemia: haemoglobin < 12 g/dL in women, < 13 g/dL in men. Hyperglycaemia: fasting glycaemia > 126 mg/dL. Renal failure: glomerular filtration rate (MDDR-4) < 60. Dyslipidaemia: total cholesterol > 220 mg/dL. Hypoalbuminaemia: albumin < 3.5 g/dL.

After adjustment for age, sex, diabetes, dyslipidaemia, albumin and functional dependence, the presence of AF was significantly associated with mortality risk (RR 2.0, $P = .011$). Other variables associated with a worse prognosis were hyperglycaemia (RR 2.2, $P = .032$), anaemia (RR 3.5, $P < .001$) and functional dependence (RR 0.6, $P = .024$) (Table 5).

Discussion

In our study only 8% of centenarians have a completely normal ECG. However, the abnormalities most frequently found have little clinical relevance, they are not related to their functional capacity, and only AF is associated with increased mortality.

The ECG abnormalities that appear with age have been widely studied. The most common findings are left ventricular hypertrophy, repolarisation abnormalities and Q/QS patterns, even in asymptomatic patients [4,6]. The frequency of these findings increases with age [4,5], and

in some studies are associated with increased mortality [20,21]. In general, men have more abnormalities related to ischemic heart disease [4,6], although this difference fades with age [5]. Among the rhythm disturbances, the most common are extra systolic beats, followed by AF [4-6,22] and their prevalence also increases with age. Other minor abnormalities are commonly found, so that less than 40% of those over 65 have a completely normal ECG.

By contrast, ECG studies in centenarians are rare and their results have a wide variability [6-14]. For example, the frequency of AF varies from 0 to 30%, or the ST segment changes from 9% to 40%. This is probably because of the difficulty of obtaining a wide sample [23], which introduces many biases: small numbers of patients [7,8,10,13], studies without established inclusion criteria, selected population collected [8,13] or retrospective studies in a hospital setting [14]. In addition, some of them do not perform a systematic analysis according to

Table 2 Distribution of abnormalities in the ECG of 80 centenarians, classified by the Minnesota code

	Total n = 80		Male n = 26		Female n = 64		P
	No.	%	No.	%	No.	%	
Sinus rhythm	59	73.8%	19	73.1%	40	74.1%	.924
Arrhythmias	44	55%	15	57.7%	29	53.7%	.737
Premature supraventricular, junctional or ventricular beats	29	36.3%	8	30.8%	21	38.9%	.479
Atrial fibrillation	21	26.3%	7	26.9%	14	25.9%	.924
Other arrhythmias	5	6.3%	2	7.7%	3	5.6%	.658
QRS axis deviation	27	33.8%	9	34.6%	18	33.3%	.910
Left-axis deviation	24	30%	7	26.9%	17	31.5%	.677
Right-axis deviation	1	1.3%	0	0%	1	1.9%	.999
Extreme axis deviation	2	2.5%	2	7.7%	0	0%	.103
High amplitude R waves	7	8.8%	1	3.8%	6	11.1%	.418
Left ventricular hypertrophy	7	8.8%	1	3.8%	6	11.1%	.418
AV conduction defect	9	11.3%	3	11.5%	6	11.1%	.999
Second-degree AV block	1	1.3%	0	0%	1	1.9%	.999
First-degree AV block	8	10%	3	11.5%	5	9.3%	.710
Ventricular conduction defect	26	32.5%	11	42.3%	15	27.8%	.194
Left bundle branch block	8	10%	1	3.8%	7	13%	.264
Right bundle branch block	12	15%	6	23.1%	6	11.1%	.160
Right bundle branch block incomplete	2	2.5%	0	0%	2	3.7%	.999
Left bundle branch block incomplete	7	8.8%	4	15.4%	3	5.6%	.206
Nonspecific intraventricular conduction delay	2	2.5%	2	7.7%	0	0%	.103
Repolarisation abnormalities	25	31.3%	8	30.8%	17	31.5%	.949
ST depression	17	21.3%	3	11.5%	14	25.9%	.242
T amplitude zero, negative or diphasic	18	22.5%	7	26.9%	11	20.4%	.511
Other repolarisation abnormalities	5	6.3%	2	7.7%	3	5.6%	.658
Q and QS patterns	13	16.3%	5	19.2%	8	14.8%	.616
Miscellaneous items	27	33.8%	6	23.1%	21	38.9%	.161
Low QRS amplitude	9	11.3%	3	11.5%	6	11.1%	.999
Atrial enlargement	7	8.8%	1	3.8%	6	11.1%	.418
QRS transition zone to the right/left	15	18.8%	3	11.5%	12	22.2%	.363

established criteria, such as the Minnesota code [9,11,12]. In most studies the analysis is purely descriptive and differences by sex, cardiovascular disease or functional capacity are not considered. Similarly, they do not discuss whether these findings are associated with a higher mortality in centenarians, as in a younger population [24].

Our study was designed to avoid these biases. We included the 95.2% of centenarians in our area, a systematic approach to baseline health status was performed at the patient's home, and they were followed up to their death. The main limitation that arises is the relatively low number of patients finally included, 80. Nonetheless, we consider that the sample is large enough compared to previous studies on centenarians.

Only 8% of centenarians had a normal ECG; thus, the frequency of ECG alterations was very high. This finding has been previously reported in an older population [5] and also in centenarians [13,14]. The fact that the frequency of ECG abnormalities increases with age, together with the absence of differences according to sex in our series, suggest that these abnormalities are related to aging itself more than to cardiovascular risk factors, which are more prevalent in men. Our data revealed that these changes were not related to greater disability or to cognitive impairment (Table 3), probably because they are associated with a wide range of factors, of which heart disease is one of several.

Arrhythmias are common in these patients (55%) with extrasystole the most frequent. Interestingly, the

Table 3 Distribution of main abnormalities in the ECG of 80 centenarians, according to the presence of functional dependence measured by BI and cognitive impairment measured by CME

	BI > 60		BI ≤ 60		P	CME ≥ 20		CME < 20		P
	No.	%	No.	%		No.	%	No.	%	
Sinus rhythm	34	79.1	25	67.6	.244	17	73.9%	42	73.7	.983
Arrhythmias	24	55.8	20	54.1	.875	14	60.9%	30	52.6%	.503
Atrial fibrillation or flutter	9	20.9	12	32.4	.244	6	26.1%	15	26.3%	.983
QRS axis deviation	12	27.9	15	40.5	.233	6	26.1%	21	36.8%	.357
High amplitude R waves	6	14	1	2.7	.116	2	8.7%	5	8.8%	.999
AV conduction defect	3	7	6	16.2	.290	2	8.7%	7	12.3%	.999
Ventricular conduction defect	14	32.6	12	32.4	.990	6	26.1%	20	35.1%	.437
Repolarisation abnormalities	11	25.6	14	37.8	.238	5	21.7%	20	35.1%	.244
ST depression	6	14	11	29.7	.085	2	8.7%	15	26.3%	.130
T amplitude zero, negative or diphasic	8	18.6	10	27	.368	4	17.4%	14	24.6%	.487
Q and QS patterns	5	11.6	8	21.6	.227	3	13.0%	10	17.5%	.747
Miscellaneous items	13	30.2	14	37.8	.473	4	17.4%	23	40.4%	.068

Abbreviations: BI, Barthel index; CME, cognition mini-exam.

frequency of AF in our series was high (26%), whereas such a prevalence has only been reported in a hospital-based retrospective study [14]. Nevertheless, these data are consistent with those obtained in the general population over 85 [5]. The lower prevalence of AF observed in previous studies on centenarians [8-13] is probably related to the aforementioned sample bias.

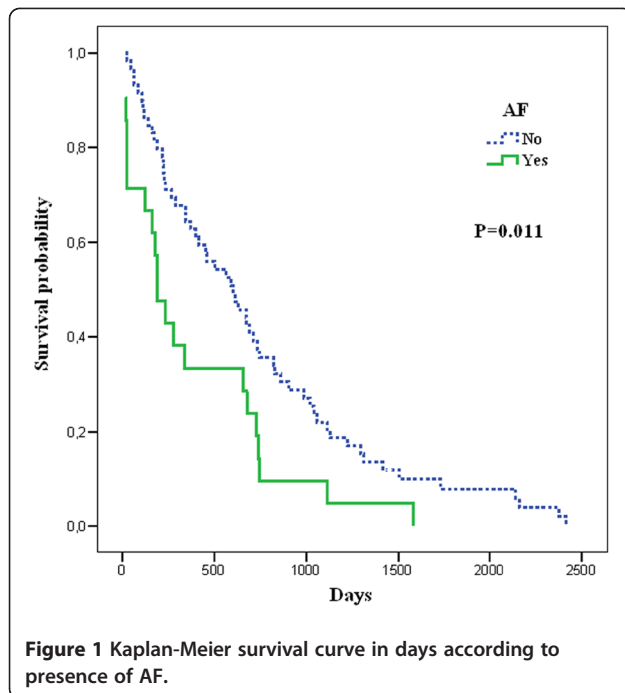
The presence of left axis in 33.8% of cases, and left ventricular hypertrophy in 8.8% are both within the range reported in previous studies [7,8,13]. The frequency of AV or intraventricular conduction defects was also high, similar to that reported in the centenarian population, and clearly superior to that reported in non-centenarian elderly [4]. This is probably because of the aging process, also affecting the conduction tissue. Changes suggestive

Table 4 Univariate analysis of electrocardiographic abnormalities associated with survival

		n	Median*	RR	95% CI RR	P
Atrial fibrillation	yes	21	191	1.9	1.2 - 3.2	.012
	no	59	603			
QRS axis deviation	yes	27	368	1.0	0.6 - 1.6	.958
	no	53	627			
High amplitude R waves	yes	7	266	1.8	0.8 - 4	.136
	no	73	564			
AV conduction defect	yes	9	395	1.5	0.8 - 3.1	.231
	no	71	590			
Ventricular conduction defect	yes	26	459	0.8	0.5 - 1.3	.417
	no	54	454			
Repolarisation abnormalities	yes	25	266	1.4	0.9 - 2.2	.192
	no	55	590			
ST depression	yes	17	191	2.2	1.3 - 3.9	.005
	no	63	603			
Q and QS patterns	yes	13	340	1.4	0.8 - 2.6	.275
	no	67	564			
Miscellaneous items	yes	27	344	1.4	0.8 - 2.2	.199
	no	53	627			

*Survival days.

Abbreviations: CI 95%: 95% Confidence interval; RR: Relative risk.



of ischaemia (disorder of repolarisation 31.3%, Q/QS pattern 16.3%), were also more frequent than those observed in a younger population, but not in the same proportion. This fact might suggest a bias of survival in the elderly who have no ischaemic heart disease.

In our series, AF has proven to be an independent predictor of mortality, a fact already reported in younger patients [21]. This situation probably reflects a more serious underlying heart disease [22]. This suggests that centenarians with AF could benefit from strict clinical control and optimal pharmacological treatment. In the same way, preventive strategies such as anticoagulation, which have shown a proven benefit in the younger population, might be considered in functionally independent centenarians without cognitive impairment.

Table 5 Multivariate analysis of factors associated with mortality

	β	P	RR	95% CI RR
Sex (male)	0.2	.561	1.2	0.7 - 2.0
Age (years)	-0.2	.154	0.8	0.7- 1.1
Functional dependence	0.6	.024	1.8	1.1 - 2.9
Hyperglycaemia	0.8	.032	2.2	1.1 - 4.6
Hypoalbuminaemia	1.2	.000	3.5	1.9 - 6.5
Atrial fibrillation	0.7	.011	2.0	1.2 - 3.5

Hypoalbuminaemia: Albumin < 3.5 g/dL.

Hyperglycaemia: Fasting glycaemia > 126 mg/dL.

Functional dependence: Barthel index \leq 60.

RR: Relative risk. CI 95%: 95% Confidence interval.

Conclusion

Although ECG abnormalities are common in centenarians, they are not related to sex, functional capacity or cognitive impairment. Most of them have little clinical or prognostic significance. These abnormalities seem to be the result of the natural aging process and the only one that had an impact on survival was AF.

Competing interests

The authors declare that they have no competing interests.

Author details

¹Internal Medicine Department, Lucus Augusti University Hospital (HULA), SERGAS, San Cibrao, s/n 27003, Lugo, Spain. ²Internal Medicine Department, Arquitecto Marcide Hospital, SERGAS, Av. da Residencia, s/n 15405, Ferrol, Spain. ³Clinic Epidemiology and Biostatistics Unit, A Coruña University Hospital (CHUAC), SERGAS, As Xubias, 15006, A Coruña, Spain. ⁴Cardiology Department, Lucus Augusti University Hospital (HULA), SERGAS, San Cibrao, s/n 27003, Lugo, Spain.

Authors' contributions

RRR conceived the study, analyzed and interpreted the data and was a major contributor in writing the manuscript. RMS analyzed and interpreted the data and was a major contributor in writing the manuscript. AGG has analyzed the data and has been involved in drafting the manuscript and revising it critically. SPD participated in the design of the study and performed the statistical analysis. ATF has analyzed the data and has been involved in revising the manuscript critically. SPF participated in the design of the study and has been involved in revising the manuscript critically. ECV has analyzed the data and has been involved in drafting the manuscript and revising it critically. All authors approved the final manuscript.

Received: 29 June 2011 Accepted: 20 April 2012

Published: 20 April 2012

References

- Rabuñal Rey R, Monte Secades R, Rigueiro Veloso MT, Casariego Vales EJ, Ibáñez Alonso MD, García Pais MJ: Centenarian patients attended at a general hospital. *Rev Clin Esp* 2002, **202**:326-8.
- Motta M, Bennati E, Capri M, Ferlito L, Malaguarnera M: Diabetes mellitus in the extreme longevity. *Exp Gerontol* 2008, **43**:102-5.
- Bennati E, Murphy A, Cambien F, Whitehead AS, Archbold GP, Young IS, Rea IM: BELFAST centenarians: a case of optimised cardiovascular risk? *Curr Pharm Des* 2010, **16**:789-95.
- Campbell A, Caird FI, Jackson TF: Prevalence of abnormalities of electrocardiogram in old people. *Br Heart J* 1974, **36**:1005-11.
- Rajala S, Kältiala K, Haavisto M, Mattila K: Prevalence of ECG findings in very old people. *Eur Heart J* 1984, **5**:168-74.
- Furberg CD, Manolio TA, Psaty BM, Bild DE, Borhani NO, Newman A, Tabatznik B, Rautaharju PM: Major electrocardiographic abnormalities in persons aged 65 years and older (the Cardiovascular Health Study). Cardiovascular Health Study Collaborative Research Group. *Am J Cardiol* 1992, **69**:1329-35.
- Masuzaki S, Niimura T, Tanaka H, Nagoshi T, Kashima T, Ishigami T, Tanaka N, Kanehisa T: Analysis of electrocardiogram of centenarians. Proceedings of the 33 rd Annual Meeting of the Japanese Circulation Society. *Jpn Circ J* 1969, **33**:1158-9.
- Cornu JF: Electrocardiogram of centenarians (apropos of 25 ECGs of centenarians). *Rev Med Suisse Romande* 1979, **99**:107-13.
- Rohla M, Lengyel E: Studies of centenarians in Hungary: results of twelve-lead electrocardiographic analysis. In: *Centenarians in Hungary. A sociomedical and demographic study*. Edited by Beregui E. Interdiscipl Top Gerontol. Basel, Karger, 1990; 27: 47-52.
- Wakida Y, Okamoto Y, Iwa T, Yonemoto T, Kanemaki K, Shiomi T, Mizutani K, Kobayashi T: Arrhythmias in centenarians. *Pacing Clin Electrophysiol* 1994, **17**(11 Pt 2):2217-21.
- Chessari S, Mangiacavallo G, Pollina R, Priola P, Pupella E, Di Gregoli A, Fradà G: Twelve-lead electrocardiographic analysis and pharmacotherapy in centenarians. *Arch Gerontol Geriatr* 1996, **22**(Suppl 1):367-72.

12. Suzuki M, Wilcox BJ, Wilcox CD: **Implications from and for food cultures for cardiovascular disease: longevity.** *Asia Pac J Clin Nutr* 2001, **10**:165–71.
13. Klich-Raczka A, Zyczkowska J, Grodzicki T: **Electrocardiogram in centenarians.** *Kardiol Pol* 2003, **58**:275–81.
14. Lakkireddy DR, Clark RA, Mohiuddin SM: **Electrocardiographic findings in patients >100 years of age without clinical evidence of cardiac disease.** *Am J Cardiol* 2003, **92**:1249–51.
15. Rabuñal Rey R, Monte Secades R, Veiga Cando MD, Rigueiro Veloso MT, López Diaz MJ, Casariego Vales EJ, Guerrero Lombardía J: **Health status of the oldest old: functional and medical situation in centenarians.** *An Med Interna* 2004, **21**:543–7.
16. Cid-Ruzafa J, Damián-Moreno J: **Disability evaluation: Barthel's index.** *Rev Esp Salud Publica* 1997, **71**:127–37.
17. Lobo A, Saz P, Marcos G, Día JL, de la Cámara C, Ventura T, et al: **Revalidation and standardization of the cognition mini-exam (first Spanish version of the Mini-Mental Status Examination) in the general geriatric population.** *Med Clin (Barc)* 1999, **112**:767–74.
18. Charlson ME, Pompei P, Ales KL, MacKenzie CR: **A new method of classifying prognostic comorbidity in longitudinal studies: development and validation.** *J Chronic Dis* 1987, **40**:373–83.
19. Rose GA, Blackburn H: **Cardiovascular survey methods.** *Monogr Ser World Health Organ* 1968, **56**:1–188.
20. Caird FI, Campbell A, Jackson TF: **Significance of abnormalities of electrocardiogram in old people.** *Br Heart J* 1974, **36**:1012–8.
21. Rajala S, Haavisto M, Kalliala K, Mattila K: **ECG findings and survival in very old people.** *Eur Heart J* 1985, **6**:247–52.
22. Furberg CD, Psaty BM, Manolio TA, Gardin JM, Smith VE, Rautaharju PM: **Prevalence of atrial fibrillation in elderly subjects (the Cardiovascular Health Study).** *Am J Cardiol* 1994, **74**:236–41.
23. Andersen-Ranberg K, Schroll M, Jeune B: **Healthy centenarians do not exist, but autonomous centenarians do: a population-based study of morbidity among Danish centenarians.** *J Am Geriatr Soc* 2001, **49**:900–8.
24. Casiglia E, Spolaore P, Ginocchio G, Marchioro M, Mazza A, di Menza G, Maniati G, Daskalakis C, Colangeli G, Ambrosio GB: **Mortality in relation to Minnesota code items in elderly subjects. Sex-related differences in a cardiovascular study in the elderly.** *Jpn Heart J* 1993, **34**:567–77.

doi:10.1186/1471-2318-12-15

Cite this article as: Rabuñal-Rey et al.: **Electrocardiographic abnormalities in centenarians: impact on survival.** *BMC Geriatrics* 2012 **12**:15.

Submit your next manuscript to BioMed Central and take full advantage of:

- Convenient online submission
- Thorough peer review
- No space constraints or color figure charges
- Immediate publication on acceptance
- Inclusion in PubMed, CAS, Scopus and Google Scholar
- Research which is freely available for redistribution

Submit your manuscript at
www.biomedcentral.com/submit

