



Published in final edited form as:

Cancer Res. 2012 August 15; 72(16): 4225–4237. doi:10.1158/0008-5472.CAN-12-1118.

## CDK inhibitors up-regulate BH3-only proteins to sensitize human myeloma cells to BH3 mimetic therapies

Shuang Chen<sup>1,§</sup>, Yun Dai<sup>1,§</sup>, Xin-Yan Pei<sup>1</sup>, Jennifer Myers<sup>1</sup>, Li Wang<sup>1</sup>, Lora B. Kramer<sup>1</sup>, Mandy Garnett<sup>1</sup>, Daniella M. Schwartz<sup>1</sup>, Florence Su<sup>1</sup>, Gary L. Simmons<sup>1</sup>, Justin D. Richey<sup>1</sup>, Dustin G. Larsen<sup>1</sup>, Paul Dent<sup>2</sup>, Robert Z. Orlowski<sup>3</sup>, and Steven Grant<sup>1,4</sup>

<sup>1</sup>Division of Hematology/Oncology, Department of Medicine, Virginia Commonwealth University and the Massey Cancer Center, Richmond, VA

<sup>2</sup>Department of Neurosurgery, Virginia Commonwealth University and the Massey Cancer Center, Richmond, VA

<sup>3</sup>Lymphoma/Myeloma, the University of Texas MD Anderson Cancer Center, Houston, TX

<sup>4</sup>Department of Biochemistry, Virginia Commonwealth University and the Massey Cancer Center and Institute of Molecular Medicine, Richmond, VA

### Abstract

BH3 mimetic drugs induce cell death by antagonizing the activity of anti-apoptotic Bcl-2 family proteins. Cyclin-dependent kinase (CDK) inhibitors that function as transcriptional repressors down-regulate the Bcl-2 family member Mcl-1 and increase the activity of selective BH3-mimetics that fail to target this protein. In this study, we determined whether CDK inhibitors potentiate the activity of pan-BH3 mimetics by directly neutralizing Mcl-1. Specifically, we evaluated interactions between the prototypical pan-CDK inhibitor flavopiridol and the pan-BH3-mimetic obatoclastin in multiple myeloma (MM) cells in which Mcl-1 is critical for survival. Co-administration of flavopiridol and obatoclastin synergistically triggered apoptosis in both drug-naïve and drug-resistant MM cells. Mechanistic investigations revealed that flavopiridol inhibited Mcl-1 transcription but increased transcription of Bim and its binding to Bcl-2/Bcl-xL. Obatoclastin prevented Mcl-1 recovery and potentiated release of Bim from Bcl-2/Bcl-xL and Mcl-1, accompanied by activation of Bax/Bak. Whether administered singly or in combination with obatoclastin, flavopiridol also induced up-regulation of multiple BH3-only proteins, including BimEL, BimL, Noxa, and Bik/NBK. Notably, shRNA knock-down of Bim or Noxa abrogated lethality triggered by the flavopiridol/obatoclastin combination *in vitro* and *in vivo*. Together, our findings demonstrate that CDK inhibition potentiates pan-BH3-mimetic activity through a cooperative mechanism involving up-regulation of BH3-only proteins with coordinate down-regulation of their anti-apoptotic counterparts. These findings have immediate implications for the clinical trial design of BH3 mimetic-based therapies that are presently being studied intensively for the treatment of diverse hematopoietic malignancies, including lethal multiple myeloma.

Corresponding Authors: Dr. Steven Grant, Division of Hematology/Oncology, PO Box 980035, Virginia Commonwealth University, Richmond, VA 23298, Phone: 804-828-5211, Fax: 804-828-8079, stgrant@vcu.edu Dr. Yun Dai, Virginia Commonwealth University, Massey Cancer Center, Room 234 Goodwin Research Building, 401 College Street, Richmond VA 23298, Phone: 804-828-5168, Fax: 804-827-3781, ydai@vcu.edu.

<sup>§</sup>S.C. and Y.D. contributed equally to this work.

Contribution: S.C. and Y.D. designed and performed research, analyzed data, and wrote the manuscript. X.-Y.P., J.M., L.W., L.B.K., M.G., D.M.S., F.S., G.L.S., J.D.R., D.G.L. performed research. P.D. and R.Z.O. helped design research. S.G. designed research, analyzed data, and wrote the manuscript.

Disclosure of Potential Conflicts of Interest: There is no potential conflict of interest to disclose.

## Keywords

BH3-only protein; Bim; Cdk inhibitor; BH3-mimetic; myeloma

---

## Introduction

Multiple myeloma (MM) is an incurable accumulative disease of plasma cells characterized by dysregulation of Bcl family members<sup>1</sup>. These apoptosis regulatory proteins are divided into pro- and anti-apoptotic groups. The former consists of multi-domain proteins (e.g., Bak and Bax) and BH3-only proteins (e.g., Bim, Bid, Puma, Noxa, Bad, Bik, Bmf, and Hrk etc.). The latter include multi-domain proteins e.g., Bcl-2, Bcl-xL, Mcl-1<sup>2</sup>. Whereas Bax/Bak are absolutely required for apoptosis, BH3-only proteins, which convert noxious stimuli into death signals<sup>2</sup>, consist of “activators” (e.g., Bim) and “sensitizers/derepressors” (e.g., Noxa, Bik)<sup>2</sup>. Evidence implicating BH3-only proteins in anti-cancer agent-induced apoptosis<sup>3;4</sup> prompted the development of BH3-mimetics that bind to and inactivate anti-apoptotic Bcl proteins<sup>5</sup>.

One such agent, ABT-737, binds avidly to Bcl-2/Bcl-xL, but not Mcl-1<sup>6</sup>; consequently, relative levels of Bcl-2/Bcl-xL versus Mcl-1 determine susceptibility to this agent<sup>7</sup>. Mcl-1 is highly expressed in MM (e.g., in 51% patients at diagnosis and 81% at relapse), while high Mcl-1 expression correlates with poor clinical outcome<sup>8</sup>. Mcl-1 also plays an important role in resistance to agents such as bortezomib<sup>9</sup>. Recently, the novel pan-BH3-mimetic obatoclax has been developed which in addition to other anti-apoptotic proteins, antagonizes the activity of Mcl-1 in various tumors types<sup>10;11</sup>, including hematological malignancies such as MM. Preclinical *in vitro* studies in MM demonstrated single-agent activity and additivity with other agents, but limited *in vivo* bioactivity when administered alone<sup>12</sup>.

Cyclin-dependent kinases (Cdks) regulate cell cycle progression and transcription<sup>13</sup>. Pan-Cdk inhibitors such as flavopiridol (FP; alvocidib) act in part by inhibiting Cdk9, a kinase involved in RNA polymerase II (Pol II)-mediated transcription elongation<sup>13</sup>. Consequently, Cdk inhibitors block gene transcription and down-regulate short-lived proteins including Mcl-1, promoting apoptosis<sup>14;15</sup>. Recently, several new-generation pan-Cdk inhibitors (e.g., CYC202, SCH727965), which also target Cdk9, have entered clinical trials<sup>13</sup>.

Although pan-Cdk inhibitors have been shown to potentiate ABT-737 lethality in transformed cells by down-regulating Mcl-1<sup>7</sup>, it is unknown whether synergistic interactions would occur with pan-BH3-mimetics like obatoclax, which bind to/inactivate Mcl-1<sup>10</sup>. To address this question, we examined interactions between the protooptical pan-Cdk inhibitor FP and obatoclax in human MM cells. Here we report that FP synergistically increases obatoclax lethality in diverse MM cells, including those resistant to novel agents, in the presence of stromal cell factors, and in primary CD138<sup>+</sup> MM samples, but not in their normal counterparts. Significantly, obatoclax/FP co-administration, in sharp contrast to obatoclax alone, displays marked *in vivo* activity and increases survival in multiple murine systems. From a mechanistic standpoint, the unexpected up-regulation of multiple BH3-only proteins, including BimEL, BimL, Noxa, and Bik/NBK, cooperates with down-regulation of anti-apoptotic proteins (e.g., Mcl-1, Bcl-xL) to play a significant functional role in lethality. Collectively, these findings provide proof of principle for a novel anti-MM strategy in which pan-Cdk inhibitors are combined with pan-BH3 mimetics, and highlight the critical importance of interplay between pro- and anti-apoptotic proteins in synergistic interactions between such agents.

## Materials and Methods

### Cells and reagents

Human MM U266 and RPMI8226 cells were obtained from ATCC and maintained as before<sup>19</sup>. Both were authenticated (Basic STR Profiling Service, ATCC® 135-X) by ATCC immediately after this study was completed. Bortezomib-resistant cells (PS-R) were generated by continuously culturing U266 cells in increasing concentrations of bortezomib (beginning at 0.5nM and increasing in stepwise increments of 0.2nM) until 20nM, and maintained in medium containing 15nM bortezomib. A revlimid-resistant RPMI8226 (R10R) cell line was similarly established and maintained in 10  $\mu$ M revlimid<sup>20</sup>. Dexamethasone-sensitive (MM.1S) and -resistant (MM.1R) cell lines were provided by Dr Steven T. Rosen (Northwestern University, Chicago, Ill). U266/Mcl-1 and RPMI8226/Bcl-xL cells were established by stably transfecting full-length human Mcl-1 and Bcl-xL cDNA, respectively<sup>19</sup>. All experiments utilized logarithmically growing cells ( $3\text{--}5\times 10^5$  cells/ml). MycoAlert (Lonza, Allendale, NJ) assays were performed, demonstrating that all cell lines were free of *mycoplasma* contamination.

Bone marrow (BM) samples were obtained with informed consent according to the Declaration of Helsinki and Virginia Commonwealth University IRB approval from four patients with MM undergoing routine diagnostic aspirations. CD138<sup>+</sup> cells were separated using a MACS magnetic separation technique (Miltenyi Biotech, Auburn, CA). Normal CD34<sup>+</sup> hematopoietic progenitor cells were isolated from two cord blood (CB) samples; purity and viability were > 90%, by flow cytometry and trypan blue exclusion, respectively,

The pan-BH3-mimetic obatoclax (GX015-070) were provided by GeminX Pharmaceuticals (Malvern, PA). The pan-Cdk inhibitors flavopiridol (alvocidib) and SCH727965 (Merck, Whitehouse Station, N.J.) were provided by the NCI. Cycloheximide (CHX) and MG-132 were purchased from Sigma and Calbiochem (San Diego, CA) respectively, dissolved in DMSO, aliquoted, and stored at  $-20^{\circ}\text{C}$ . In all experiments, final DMSO concentrations did not exceed 0.1%. Recombinant human Il-6, IGF-1, BAFF, and APRIL were obtained from PeproTech (Rocky Hill, NJ).

### Procedures for *in vitro* studies

For procedures related to flow cytometry, TUNEL staining, quantitative RT-PCR (qPCR), immunoblot, co-immunoprecipitation, subcellular fractionation, Bak and Bax conformational change, RNA interference see Supplemental Materials and Methods<sup>7</sup>.

### Animal studies

Animal studies were approved by the Virginia Commonwealth University IACUC, and performed in accordance with the U.S. Department of Agriculture and Department of Health and Human Services, and the NIH. Three mouse models were employed in this study.

Model #1 - subcutaneous (s.c.) flank murine model: Athymic NCr-nu/nu mice (Jackson Laboratories, Bar Harbor, ME) were subcutaneously inoculated in the right rear flank with  $5\times 10^6$  RPMI8226 cells stably transfected with a construct encoding luciferase. Treatment was administered after luciferase activity was detected.

Model #2 – subcutaneous (s.c.) dual-side flank murine model: NOD/SCID-gamma mice (Jackson Laboratories) were subcutaneously inoculated in two opposite flanks with  $1\times 10^7$  U266 cells stably transfected with constructs encoding shRNA targeting either Bim (shBim, left flank) or scrambled sequence negative control (shNC, right flank).

Model #3 – intravenous (i.v.) orthotopic murine model: NOD/SCID gamma mice (Jackson Laboratories) were intravenously injected with  $5 \times 10^6$  U266 cells stably transfected with constructs encoding luciferase.

Obatoclox mesylate (GX15-070MS) was freshly reconstituted with 5% Dextrose for Injection (USP) and administered via intramuscular (i.m.) or intraperitoneal (i.p.) injection. FP in DMSO was diluted in 0.9% saline and administered via i.p. injection. Control animals were injected with equal volumes of vehicle. Mice were monitored for tumor growth every other day visually or with the use of an IVIS 200 imaging system (Xenogen Corporation, Alameda, CA). Measurement of animal body weight was performed every other day throughout the study to monitor toxicity. Tumor volumes were calculated using the formula  $(L \times W^2)/2$ , with L and W representing length and width respectively, and when tumor size reached  $2,000 \text{ mm}^3$ , mice were euthanized in accordance with institutional guidelines.

### Statistical analysis

Values represent the means  $\pm$  SD for at least three independent experiments performed in triplicate. The significance of differences between experimental variables was determined using the Student's t test or One-way ANOVA with Tukey-Kramer Multiple Comparisons Test. The significance of *P* values was  $< 0.05$  (\*),  $< 0.01$  (\*\*), or  $< 0.001$  (\*\*\*) wherever indicated. Analysis of synergism was performed according to Median Dose Effect analysis using the software Calcsyn (Biosoft, Ferguson, MO). Kaplan-Meier analysis of mouse survival or hind-leg paralysis was performed using IBM SPSS Statistics software.

## Results

### Cdk inhibitors synergistically potentiate BH3-mimetic lethality by engaging the mitochondria-related apoptotic cascade

Co-administration (24hr) of minimally toxic concentrations of obatoclox and FP sharply reduced mitochondrial membrane potential and increased 7-AAD uptake in U266 cells (Fig 1A), accompanied by a pronounced increase in both early (annexin V<sup>+</sup>/PI<sup>-</sup>) and late (annexin V<sup>+</sup>/PI<sup>+</sup>) apoptosis (Fig 1B). Interactions occurred at obatoclox concentrations as low as 300nM (data not shown). Median Dose Effect analysis revealed CI values less than 1.0, indicating synergism (Fig 1C). Whereas individual treatment had only modest effects, combined exposure markedly increased AIF and cytochrome c cytosolic release (Fig 1D, left panels), and caspase-3, -8, -9, and PARP cleavage (right panels). Apoptosis was confirmed by TUNEL staining (data not shown). Concordant results were observed in other human MM lines (Fig 5C). Similar interactions were observed when other pan-Cdk inhibitors (e.g., SCH727965) and pan-Bcl-2 antagonists (e.g., HA14-1) were employed (Suppl Fig S1A).

### Cdk inhibitor/BH3-mimetic interactions are associated with Mcl-1 and Bcl-xL down-regulation

Immunoblot analysis revealed Mcl-1 down-regulation 6h after FP exposure, with recovery at 16h (Fig 2A) despite the fact that inhibition of Pol II CTD phosphorylation (serine 2) persisted (Suppl Fig S1B), a phenomenon observed in an earlier study<sup>14</sup>. Obatoclox alone clearly decreased Mcl-1 levels in a dose- and time-dependent manner<sup>21</sup>. Notably, FP/obatoclox co-administration prevented recovery from Mcl-1 down-regulation at later intervals (e.g., 16h – 48h; Fig 2A). Treatment with FP +/- obatoclox markedly diminished serine 2 phosphorylation of Pol II CTD at 6h (Fig 2B, left panels) and 16h (Suppl Fig S1B), indicating Cdk9/cyclin T (P-TEFb) inhibition. Moreover, in FP/obatoclox-treated cells, co-administration of the translation inhibitor CHX further reduced Mcl-1 levels (Fig 2B, middle panels), whereas the proteasome inhibitor MG-132 failed to restore Mcl-1 expression (Fig 2B, right panels), arguing against translational or post-translational mechanisms of Mcl-1

down-regulation. Quantitative RT-PCR (qPCR) revealed a clear increase in Mcl-1 mRNA levels in obatoclast-treated U266 and RPMI8226 cells, as described earlier<sup>21</sup>, a phenomenon largely attenuated by FP (Fig 2C and Suppl Fig S1C).

Effects on Bcl-xL, which cooperates with Mcl-1 to tether and inactivate Bak<sup>22</sup>, were then examined. Exposure of U266 cells to FP +/- obatoclast reduced Bcl-xL levels in a time-dependent manner (Suppl Fig S2A), while CHX failed to further down-regulate Bcl-xL (Suppl Fig S2B). In contrast, Bcl-2 protein levels remained unchanged with all treatments (Suppl Fig S2C, left panels). Analogous results were obtained in RPMI8226 cells (Suppl Fig S2C, right panels).

Ectopic expression of Mcl-1 partially but significantly attenuated FP/obatoclast lethality at 24h (Fig 2D and Suppl Fig S2D). However, protection was not statistically significant at 48h (Fig 2D). In contrast, cells overexpressing Mcl-1 were substantially resistant to bortezomib at both 24h and 48h (Fig 2D), consistent with previous reports<sup>9</sup>. Bcl-xL over-expression partially but significantly protected cells from FP/obatoclast lethality at both 24h and 48h (Suppl Fig S2E). Together, these findings suggest that Mcl-1 and Bcl-xL down-regulation plays a significant but limited functional role in FP/obatoclast lethality.

### Up-regulation of BH3-only proteins in MM cells exposed to Cdk inhibitor/BH3-mimetic

Because Mcl-1 or Bcl-xL over-expression only partially protected cells from FP/obatoclast, effects of the regimen were then examined in relation to expression of proapoptotic BH3-only proteins using a BH3-only detection kit. Unexpectedly, 24h exposure of MM cells to FP +/- obatoclast resulted in marked up-regulation of several BH3-only proteins, including Bim (EL and L isoforms, Fig 3A), Bik/NBK (Suppl Fig S3A), and Noxa (Suppl Fig S3B).

Consistent with results in other tumor cell types<sup>21</sup>, obatoclast played a major role in Noxa up-regulation. Time course analysis of U266 cells revealed that obatoclast alone sharply increased Noxa levels as early as 6h after exposure, but this effect was no longer apparent after 16h (data not shown). Notably, obatoclast-induced Noxa up-regulation was sustained for longer intervals (e.g., at least 24h) in the presence of FP (Suppl Fig S3B, upper panels). Similar events occurred in RPMI8226 cells (Suppl Fig S3B, lower panels). Importantly, Noxa shRNA dramatically blocked apoptosis induced by either bortezomib<sup>23</sup> or FP/obatoclast (Suppl Fig S3C), arguing that up-regulation of the BH3-only protein Noxa plays a significant functional role in FP/obatoclast lethality.

### Up-regulation of Bim at the transcriptional level plays a significant functional role in Cdk inhibitor/BH3-mimetic interactions

The functional significance of up-regulation of the direct activator Bim<sup>24</sup> was then examined. FP induced Bim expression (EL and L isoforms), with or without obatoclast, in U266 (Fig 3A, left panels) and RPMI8226 cells (right panels). Immunoblot analysis confirmed increased expression of both Bim isoforms after FP treatment alone (Fig 3B, left panels) or in combination with obatoclast (right panels), events occurring at 6h and sustained for at least 24h after treatment. In contrast, obatoclast alone did not up-regulate Bim (data not shown). FP-induced Bim induction was largely blocked by CHX (Fig 3C), suggesting a requirement for *de novo* protein synthesis. Moreover, qPCR demonstrated significant increases in Bim mRNA levels at 3h, 6h, and 16h after FP treatment with or without obatoclast in both U266 and RPMI8226 cells (Fig 3D and Suppl Fig S3D), arguing that Bim up-regulation by FP occurs at the transcriptional level.

Co-immunoprecipitation was performed to examine interactions between Bim and anti-apoptotic Bcl proteins. Whereas bortezomib increased BimEL rather than BimL bound to Bcl-2 and particularly to Bcl-xL, FP alone clearly increased Bim (EL and L) binding to



Bcl-2 and BclxL (Fig 4A). The latter events were markedly attenuated by obatoclax. Interestingly, FP or obatoclax alone modestly diminished BimEL bound to Mcl-1, an effect only slightly enhanced with the combination (Fig 4A). In FP-treated cells, unleashing of Bim from both Bcl-2 and BclxL by obatoclax was associated with conformational activation of Bax and to a lesser extent Bak (Fig 4B, left panels), as well as Bax mitochondrial translocation (right panels), triggering mitochondrial outer membrane permeabilization (MOMP), caspase activation, and pronounced apoptosis (Fig 1D). Moreover, transient transfection of a construct encoding Bax shRNA significantly diminished FP/obatoclax lethality (Suppl Fig S3E).

To define the functional role of Bim up-regulation, U266 cells were stably transfected with a constructs encoding shRNA targeting Bim (shBim). In these cells, both BimEL and BimL were substantially knocked down, compared to (shNC) scrambled sequence negative controls (Fig 4C, left panel). Notably, shBim essentially abrogated FP/obatoclax-mediated lethality (Fig 4C, right panel), analogous to its ability to protect cells from bortezomib<sup>25</sup>. Consistent with these findings, shBim prevented Bax conformational change and translocation (Suppl Fig S3F), caspase activation, and PARP cleavage (Fig 4D) induced by FP/obatoclax. However, co-exposure to FP/obatoclax induced nearly equivalent Mcl-1 down-regulation in both shNC and shBim cells (Fig 4D). Analogous results were obtained when another Bim shRNA was employed (Suppl Fig S3C). Together, these findings raise the possibility that unleashing of up-regulated Bim from anti-apoptotic proteins (e.g., Bcl-2, Bcl-xL, Mcl-1) by obatoclax contributes to synergistic interactions. They also argue that in the setting of down-regulation of anti-apoptotic proteins, up-regulation of BH3-only proteins such as Bim plays a critical functional role in lethality.

### **The Cdk inhibitor/BH3-mimetic regimen is active against MM cells displaying conventional or novel forms of drug resistance, as well as primary MM cells**

In addition to drug resistance due to Bcl family dysregulation, microenvironmental factors also confer resistance in MM<sup>26</sup>. To address these issues, U266 cells were cultured in the presence of HS-5 cells (a human BM stromal cell line)<sup>27</sup>, HS-5-conditional medium (CM), or both. Whereas CM slightly reduced Bim levels, co-culture with HS-5 markedly down-regulated Bim (Fig 5A). Notably, HS-5 plus CM essentially abolished Bim expression, raising the possibility that Bim down-regulation represents a mechanism underlying stromal cell-mediated drug resistance<sup>28</sup>. Importantly, neither HS-5 ± CM prevented FP/obatoclax lethality ( $P > 0.05$ , Fig 5B, left panel). Furthermore, addition of IL-6, BAFF, APRIL, or IGF-1 also failed to attenuate FP/obatoclax lethality ( $P > 0.05$ , Fig 5B, right panel), suggesting that the FP/obatoclax regimen overcomes drug-resistance related to microenvironmental factors (e.g., stromal cells, cytokines, and growth factors).

Dexamethasone-resistant (MM.1R) and revlimid-resistant (R10R) cells exhibited roughly equivalent sensitivity to FP/obatoclax, compared to their drug-naïve counterparts (MM.1S and RPMI8226) respectively (Fig 5C). Interestingly, bortezomib-resistant U266 cells (PS-R), which were resistant to 20 nM bortezomib (Fig 5D, lower panel), displayed a clear increase in Mcl-1 levels, accompanied by a dramatic reduction in Bim expression<sup>24</sup>, particularly the EL isoform (upper panel). Significantly, PS-R cells exhibited no cross-resistance to FP/obatoclax, compared to parental cells (Fig 5D, lower panel), suggesting that MM cells exhibiting either conventional or novel forms of drug-resistance remain fully susceptible to this regimen.

Whereas sensitivity to individual agents varied between primary CD138<sup>+</sup> MM specimens isolated from different patients, co-treatment with FP/obatoclax sharply increased cell death (Fig 5E). However, toxicity toward CD138<sup>-</sup> BM cells was minimal in all samples. Interestingly, despite differences between samples, CD138<sup>+</sup> cells displayed relatively higher

levels of Bim compared with their CD138<sup>-</sup> counterparts (data not shown)<sup>29</sup>. Furthermore, FP or obatoclast alone displayed only modest toxicity toward normal CB CD34<sup>+</sup> cells, while combined treatment did not increase lethality (Fig 5E), suggesting that this regimen is active against and relatively selective toward primary MM cells.

### The Cdk inhibitor/BH3-mimetic regimen displays marked *in vivo* anti-tumor activity through a Bim-dependent mechanism

Obatoclast reportedly lacked *in vivo* single agent bioactivity in mice bearing subcutaneous KMS12PE human MM tumors<sup>12</sup>. To determine whether the FP/obatoclast regimen exhibited *in vivo* activity, athymic nude mice were inoculated in the flank with RPMI8226 cells carrying a luciferase gene. When tumors became visible, mice were treated with FP (5mg/kg, i.p.) ± obatoclast (3mg/kg, i.m.). Consistent with previous reports<sup>12</sup>, obatoclast (3mg/kg) alone had no effect on tumor growth, manifested by luciferase activity (Fig 6A, left panels). However, whereas FP (5mg/kg) alone exerted modest but discernible effects, combined treatment substantially suppressed tumor growth. The size of tumors excised from mice confirmed pronounced tumor growth suppression with combined treatment (Fig 6A, right panels). Moreover, tumor size measurements yielded concordant results ( $P = 0.0002$ , Fig 6B). Interestingly, immunoblot analysis of tumor tissues revealed that FP/obatoclast co-administration down-regulated Mcl-1 and up-regulated Bim (particularly the L isoform) and Noxa, accompanied by caspase-3 activation and PARP cleavage (Fig 6C), consistent with *in vitro* observations.

To determine whether BH3-only protein up-regulation (e.g., Bim) plays a significant functional role in FP/obatoclast lethality *in vivo*, NOD/SCID-gamma mice were inoculated s.c. with U266 cells stably transfected with shBim or shNC respectively (Fig 4C) in each flank, after which FP (3mg/kg, i.p.) ± obatoclast (3mg/kg, i.p.) was administered. FP/obatoclast co-administration markedly suppressed growth of shNC tumors (Fig 6D, right flank), analogous to results observed in the previously described flank model (Fig 6A–C). Notably, whereas a slight reduction in tumor size was observed in the obatoclast group, no obvious growth suppression was observed by FP alone or with obatoclast in shBim tumors (Fig 6D, left flank), demonstrating an important functional role for Bim in FP/obatoclast lethality *in vivo*.

The BM microenvironment plays a critical role in survival, growth, and drug-resistance of MM cells<sup>26</sup>. The activity of the FP/obatoclast regimen was therefore assessed in an animal model in which human MM cells form BM lesions, leading to bone disease at late intervals. In this orthotopic murine model, NOD/SCID-gamma mice were injected with U266 cells stably transfected with a luciferase gene, after which homing and growth of tumor cells were dynamically monitored by imaging luciferase activity. Notably, U266 cells homed to BM and then formed lesions at skeletal sites (Fig 7A), without detectable lesions in other organs, findings confirmed by IHC staining for human CD138 (data not shown). At later intervals (9 – 13 weeks after cell injection), inoculated mice displayed hind-leg paralysis (Fig 7B, right panels), a classic indicator of bone disease. After luciferase signals were visible, FP (5mg/kg, i.p.) ± obatoclast (3mg/kg, i.p.) were administered daily for five days, followed by FP (3mg/kg) ± obatoclast (3mg/kg) twice every three days. Tumor growth was monitored every two days. As shown in Fig 7A, combined treatment substantially reduced tumor burden compared to agents administered individually. Kaplan-Meier hazard analysis demonstrated that whereas obatoclast alone clearly delayed the appearance of hind-leg paralysis, FP alone had only minimal effects (Fig 7B). Notably, hind-leg paralysis did not appear in any mice in the FP/obatoclast group throughout the entire four month observation period ( $P = 0.0268$ , Fig 7B, Suppl Video). Moreover, Kaplan-Meier survival analysis revealed more prolonged survival of mice receiving combined treatment compared to mice treated with FP or obatoclast alone ( $P = 0.0161$ , Fig 7C). Finally, significant neurologic toxicity (e.g., onset of

agitation and hyperactivity), which has been noted immediately after a rapid i.v. injection of obatoclastax (4mg/kg)<sup>12</sup>, was not observed in mice after either i.m. or i.p. obatoclastax (3mg/kg) alone or in combination with FP, similar to results with i.v. injection of 2mg/kg obatoclastax in mice bearing solid tumors<sup>11</sup>. Moreover, there was no significant loss of body weight (Fig 7D) or other signs of toxicity observed after FP and obatoclastax administered alone or in combination in these murine systems. Together, these findings argue that an anti-MM regimen combining a pan-Cdk inhibitor with a pan-BH3-mimetic is active *in vivo*, and suggest that mechanisms identified *in vitro* (e.g., up-regulation of BH3-only proteins such as Bim, Mcl-1 down-regulation) may be operative *in vivo*.

## Discussion

Tumor cells are commonly characterized by over-expression of anti-apoptotic Bcl proteins (e.g., Bcl-2, Bcl-xL, or Mcl-1), which contributes to drug-resistance by disabling the death machinery<sup>30;31</sup>. Transformed cells also frequently express pro-apoptotic Bcl proteins including multi-domain (e.g., Bax and Bak) and some, if not all, BH3-only proteins such as Bim<sup>3;4</sup>. While tumor cells may be fully equipped with anti- and pro-apoptotic machinery, the latter are often inactivated through binding to their highly-expressed anti-apoptotic counterparts<sup>2</sup>. Due to the balance between anti- and pro-death Bcl proteins, tumor cells may be “primed” for cell death<sup>32</sup> by disrupting this balance, e.g., by up-regulating or mimicking pro-apoptotic protein actions, or by down-regulating/antagonizing the function of anti-apoptotic proteins<sup>33;34</sup>. The present findings demonstrate that pan-Cdk inhibitors markedly potentiates the lethality of pan-BH3 mimetics (e.g., obatoclastax) *in vitro* and *in vivo* in MM cells, including those displaying conventional or novel forms of drug-resistance. They also reveal that these agents interact synergistically by interfering with both arms of the apoptotic regulatory balance, i.e., down-regulating/disabling Bcl-2, Bcl-xL, and Mcl-1, and up-regulating BH3-only proteins including Bim, Noxa, and Bik/NBK.

Pan-Cdk inhibitors like FP act as transcriptional repressors by inhibiting Cdk9, a catalytic subunit of the cyclin T/Cdk9 complex (P-TEFb), preventing serine 2 phosphorylation of RNA Pol II CTD, thereby blocking transcription elongation<sup>13</sup> and inducing down-regulation of short-lived proteins such as Mcl-1<sup>14</sup>, an essential survival factor for MM cells<sup>35</sup>. The present results demonstrate that FP down-regulates Mcl-1 at early intervals (e.g., 6h) in association with diminished CTD serine 2 phosphorylation. However, Mcl-1 expression recovered after 16h, indicating that FP rapidly but only transiently inhibits Mcl-1 transcription in MM cells<sup>14</sup>. Recently, obatoclastax was shown to down-regulate Mcl-1 through induction of Noxa, which binds to Mcl-1 and triggers its degradation, while qPCR revealed more than a 5-fold increase in Mcl-1 mRNA levels after obatoclastax exposure (6h)<sup>21</sup>. While similar events were observed in the present study, mRNA up-regulation was largely blocked by FP. Although the mechanism underlying these phenomena is uncertain, increases in Mcl-1 mRNA may represent a compensatory response to down-regulation of the protein. Importantly, obatoclastax strikingly blocked recovery from Mcl-1 protein down-regulation after prolonged FP exposure (e.g., 16 – 48h), suggesting that persistent Mcl-1 down-regulation following FP/obatoclastax co-exposure may reflect two separate but cooperative mechanisms: a) Mcl-1 mRNA transcription inhibition by FP; and b) promotion of Mcl-1 protein degradation through Noxa induction by obatoclastax. However, Mcl-1 over-expression only partially attenuated FP/obatoclastax-mediated apoptosis at 24h, but not at intervals 48h, raising the possibility that the FP/obatoclastax regimen may circumvent Mcl-1-related drug-resistance.

MM cells exposed to FP +/- obatoclastax exhibited sharp increases in expression of BH3-only proteins including Bim (EL and L isoforms), Noxa, and Bik/NBK. Unlike Bax/Bak, protein levels of which are relatively stable<sup>2</sup>, and which must be activated to trigger apoptosis,



expression of BH3-only proteins is tightly regulated, and thus represents a candidate target<sup>3;36</sup>. Many novel agents induce expression (e.g., HDAC inhibitors<sup>19</sup>) or prevent degradation (e.g., proteasome inhibitors<sup>37</sup>) of BH3-only proteins such as Noxa, Puma, and Bim, thereby directly or indirectly activating Bax/Bak<sup>2</sup>. Obatoclox antagonizes Mcl-1 anti-apoptotic functions by unleashing Bim or Bak from Mcl-1, and also down-regulates Mcl-1 via induction of Noxa<sup>21</sup>. The present findings demonstrate that obatoclox induced Noxa up-regulation at early intervals (e.g., 6h), and that this event was enhanced and rendered more sustained by FP. Functionally, both Noxa and Bim shRNA profoundly diminished FP/obatoclox lethality. Thus, while down-regulation of anti-apoptotic proteins (e.g., Mcl-1 and Bcl-xL) may contribute to the lethality of this regimen to a limited extent, up-regulation of BH3-only proteins (e.g., Bim and Noxa) clearly plays a critical role in Cdk inhibitor/pan-BH3-mimetic interactions.

The marked increase in Bim (both EL and L isoforms) by FP ± obatoclox has, to the best of our knowledge, not been described previously. Transcriptional regulation of Bim represents a major mechanism of apoptosis regulation<sup>38</sup>. Several findings argue that FP up-regulates Bim at the transcriptional level. First, translation inhibition by CHX largely blocked Bim up-regulation induced by FP. Second, qPCR indicated that FP induced a marked increase (e.g., 3 – 5 fold) in Bim mRNA levels. In this context, transcriptional regulation of Bim is complex and multifactorial. For example, growth factor withdrawal-induced Bim up-regulation requires JNK activation in neurons, while depends on the forkhead transcription factor FKHR-L1 in hematopoietic cells<sup>3</sup>. Moreover, the *bim* promoter is regulated by stress-related transcriptional factors such as FOXO and AP-1 family members<sup>38</sup>. The mechanism by which a pan-Cdk inhibitor transcriptionally up-regulates BH3-only proteins such as Bim is not intuitively obvious. One possibility is that FP may activate JNK in the presence of pan-CDK inhibitors up-regulate BH3-only proteins to sensitize human myeloma cells to BH3 mimetic therapies Bcl-2 antagonists (e.g., HA14-1)<sup>39</sup>. Another possibility is that Cdk2 inhibition by pan-Cdk inhibitors may activate FOXO1, which induces Bim transcription<sup>41</sup>. In addition to transcriptional induction, Bim also exhibits multifactorial regulation at the levels of mRNA stability, post-translational modifications, proteasomal degradation, and cellular localization<sup>38;42</sup>. Consequently, the possibility that additional mechanisms contribute to Cdk inhibitor-mediated Bim up-regulation cannot be excluded.

The observation that Bim shRNA knock down essentially abrogated apoptosis indicates a critical functional role for Bim up-regulation in Cdk inhibitor/pan-BH3 mimetic lethality. Mechanisms of Bim-mediated cell death may reflect direct actions following displacement/de-repression of anti-apoptotic proteins by BH3-only “sensitizers”, leading to Bax/Bak activation. Alternatively, in the neutralization model, Bim binds to and neutralizes/inactivates all anti-apoptotic Bcl proteins that repress constitutively active Bax/Bak. Obatoclox releases Bim from Bcl-2, Bcl-xL, and Mcl-1 binding, thereby promoting apoptosis<sup>10;12</sup>. Interestingly, FP up-regulated expression of Bim but increased its binding to Bcl-2 and Bcl-xL, suggesting that up-regulated Bim may “prime” cells for death<sup>43;44</sup>. Indeed, obatoclox unleashed Bim from Bcl-2, Bcl-xL, and Mcl-1, leading to Bax/Bak activation and cell death in Cdk inhibitor-treated cells. Significantly, the latter event (i.e., Bax/Bak activation) did not occur in cells in which Bim was knocked down by shRNA. Notably, in a dual-sided flank murine model that circumvents problems in interpretation related to mouse-to-mouse variability<sup>45</sup>, FP/obatoclox failed to suppress the growth of tumors carrying Bim shRNA, demonstrating a functional *in vivo* role for Bim in lethality. Finally, the observation that obatoclox released Bim from multiple anti-apoptotic proteins (e.g., Bcl-2, Bcl-xL, and Mcl-1), suggests that as observed in the case of BH3-mimetics (e.g., ABT-737) administered alone<sup>43</sup>, interactions between Bcl family members, rather than simply their expression profiles, may be critical predictors of sensitivity to the Cdk inhibitor/pan-BH3 mimetic regimen in MM.

MM cells interact with the BM microenvironment to promote cell proliferation, survival, migration, and drug resistance. Genetic profiling studies revealed that Bcl family members represent microenvironment-specific chemotherapeutic response determinants in malignant hematopoietic cells, and that BH3-only “activators” are necessary for cell death<sup>45</sup>. IL-6 and IGF-1, which are critical for MM cell/microenvironment interactions, promote MM cell survival and confer drug-resistance through a) Mcl-1 induction<sup>46;47</sup> and b) Bim down-regulation<sup>34;48</sup>. The latter involves at least two mechanisms e.g., post-translational phosphorylations and/or transcription<sup>48</sup>. Notably, FP/obatoclox was fully active in the presence of these cytokines or other autocrine MM survival/growth factors (e.g., BAFF and APRIL)<sup>49</sup>. Direct MM cell-stroma contact also contributes to MM drug-resistance<sup>28</sup>. Interestingly, HS-5 co-culture and conditioned medium largely abrogated Bim expression in MM cells, implicating this phenomenon as a mechanism of stromal cell-mediated drug resistance. Significantly, FP/obatoclox lethality persisted under these conditions. FP/obatoclox also suppressed growth of MM cells that homed to bone marrow, arguing further that the Cdk inhibitor/pan-BH3 mimetic strategy may circumvent BM microenvironment-mediated drug-resistance. Finally, FP/obatoclox was active against multiple drug-resistant cell lines. Interestingly, bortezomib-resistant cells (PS-R), exhibited marked Bim down-regulation accompanied by modestly increased Mcl-1, supporting a recent concept that Bcl-2 family member dysregulation determines MM cell susceptibility to therapeutic interventions<sup>34</sup>. Importantly, these cells were also fully susceptible to FP/obatoclox. Collectively, these findings argue that those resistance mechanisms fail to protect MM cells from Cdk inhibitor/pan-BH3 mimetic regimens which coordinately target both pro- and anti-apoptotic Bcl family members.

The marked lethality of FP/obatoclox in primary CD138<sup>+</sup> MM specimens, with minimal toxicity toward their normal CD138<sup>-</sup> counterparts or CD34<sup>+</sup> hematopoietic cells, raises the possibility that MM cells may be particularly susceptible to this strategy. Significantly, in marked contrast to obatoclox administered alone, combined treatment produced marked suppression of tumor growth *in vivo* in both subcutaneous flank and intravenous orthotopic models. Particularly in the latter, in which MM cells selectively homed to the bone marrow and produced MM-specific bone disease, co-administration of FP/obatoclox markedly improved outcomes for these animals, e.g., significantly preventing hind-leg paralysis and prolonging survival. Such findings argue that whereas pan-BH3-mimetics like obatoclox may not be sufficient by themselves to induce cell death *in vitro* or *in vivo*, additional perturbations (e.g., prolongation of anti-apoptotic protein down-regulation in conjunction with up-regulation of proapoptotic BH3-only proteins) induced by pan-Cdk inhibitors may trigger a constellation of events that exceed the apoptotic threshold. In summary, the present findings provide a preclinical justification for combining pan-Cdk inhibitors, possibly including new-generation Cdk inhibitors that have recently entered the clinic<sup>13</sup>, with pan-BH3-mimetics (e.g., obatoclox)<sup>50</sup> in MM and other hematological malignancies. They also highlight the critical importance of coordinate disruption of pro- and anti-apoptotic arms of the apoptotic regulatory machinery in promoting transformed cell death.

## Supplementary Material

Refer to Web version on PubMed Central for supplementary material.

## Acknowledgments

**Grant Support** This work was supported by awards CA100866, CA 93738, 1 P50 CA142509-01, and 1 P50 CA130805-01 from the National Institutes of Health, award 6181-10 from the Leukemia and Lymphoma Society of America, and awards from the V Foundation and the Multiple Myeloma Research Foundation. Plasmid preparation was performed at the VCU Macromolecule Core Facility, supported, in part, with the funding from NIH-NCI Cancer Center Core Grant 5P30CA016059-29.

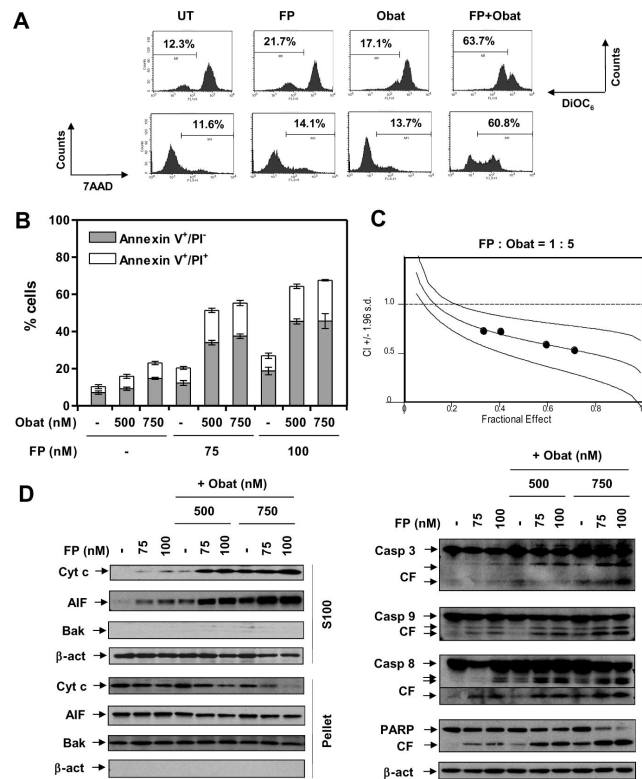
## Reference List

1. Chauhan D, Velankar M, Brahmandam M, Hideshima T, Podar K, Richardson P, et al. A novel Bcl-2/Bcl-X(L)/Bcl-w inhibitor ABT-737 as therapy in multiple myeloma. *Oncogene*. 2007; 26:2374–80. [PubMed: 17016430]
2. Chipuk JE, Moldoveanu T, Llambi F, Parsons MJ, Green DR. The BCL-2 family reunion. *Mol Cell*. 2010; 37:299–310. [PubMed: 20159550]
3. Elkholi R, Floros KV, Chipuk JE. The Role of BH3-Only Proteins in Tumor Cell Development, Signaling, and Treatment. *Genes Cancer*. 2011; 2:523–37. [PubMed: 21901166]
4. Kuroda J, Taniwaki M. Involvement of BH3-only proteins in hematologic malignancies. *Crit Rev Oncol.Hematol*. 2009; 71:89–101. [PubMed: 19022681]
5. Azmi AS, Wang Z, Philip PA, Mohammad RM, Sarkar FH. Emerging Bcl-2 inhibitors for the treatment of cancer. *Expert Opin Emerg Drugs*. 2011; 16:59–70. [PubMed: 20812891]
6. Oltersdorf T, Elmore SW, Shoemaker AR, Armstrong RC, Augeri DJ, Belli BA, et al. An inhibitor of Bcl-2 family proteins induces regression of solid tumours. *Nature*. 2005; 435:677–81. [PubMed: 15902208]
7. Chen S, Dai Y, Harada H, Dent P, Grant S. Mcl-1 down-regulation potentiates ABT-737 lethality by cooperatively inducing Bak activation and Bax translocation. *Cancer Res*. 2007; 67:782–91. [PubMed: 17234790]
8. Wulleme-Toumi S, Robillard N, Gomez P, Moreau P, Le Gouill S, Avet-Loiseau H, et al. Mcl-1 is overexpressed in multiple myeloma and associated with relapse and shorter survival. *Leukemia*. 2005; 19:1248–52. [PubMed: 15902294]
9. Gomez-Bougie P, Wulleme-Toumi S, Menoret E, Trichet V, Robillard N, Philippe M, et al. Noxa up-regulation and Mcl-1 cleavage are associated to apoptosis induction by bortezomib in multiple myeloma. *Cancer Res*. 2007; 67:5418–24. [PubMed: 17545623]
10. Konopleva M, Watt J, Contractor R, Tsao T, Harris D, Estrov Z, et al. Mechanisms of antileukemic activity of the novel Bcl-2 homology domain-3 mimetic GX15-070 (obatoclax). *Cancer Res*. 2008; 68:3413–20. [PubMed: 18451169]
11. Nguyen M, Marcellus RC, Roulston A, Watson M, Serfass L, Murthy Madiraju SR, et al. Small molecule obatoclax (GX15-070) antagonizes MCL-1 and overcomes MCL-1-mediated resistance to apoptosis. *Proc Natl Acad Sci USA*. 2007; 104:19512–17. [PubMed: 18040043]
12. Trudel S, Li ZH, Rauw J, Tiedemann RE, Wen XY, Stewart AK. Preclinical studies of the pan-Bcl inhibitor obatoclax (GX015-070) in multiple myeloma. *Blood*. 2007; 109:5430–38. [PubMed: 17332241]
13. Stellrecht CM, Chen LS. Transcription Inhibition as a Therapeutic Target for Cancer. *Cancers*. 2011; 3:4170–90.
14. Gojo I, Zhang B, Fenton RG. The cyclin-dependent kinase inhibitor flavopiridol induces apoptosis in multiple myeloma cells through transcriptional repression and down-regulation of Mcl-1. *Clin Cancer Res*. 2002; 8:3527–38. [PubMed: 12429644]
15. MacCallum DE, Melville J, Frame S, Watt K, Anderson S, Gianella-Borradori A, et al. Seliciclib (CYC202, R-Roscovitine) induces cell death in multiple myeloma cells by inhibition of RNA polymerase II-dependent transcription and down-regulation of Mcl-1. *Cancer Res*. 2005; 65:5399–407. [PubMed: 15958589]
16. Lin TS, Ruppert AS, Johnson AJ, Fischer B, Heerema NA, Andritsos LA, et al. Phase II study of flavopiridol in relapsed chronic lymphocytic leukemia demonstrating high response rates in genetically high-risk disease. *J Clin Oncol*. 2009; 27:6012–18. [PubMed: 19826119]
17. Woyach JA, Lozanski G, Ruppert AS, Lozanski A, Blum KA, Jones JA, et al. Outcome of patients with relapsed or refractory chronic lymphocytic leukemia treated with flavopiridol: impact of genetic features. *Leukemia*. Jan 13.2012 doi:10.1038/leu.2011.375. [Epub ahead of print].
18. Holkova B, Perkins EB, Ramakrishnan V, Tombes MB, Shrader E, Talreja N, et al. Phase I trial of bortezomib (PS-341; NSC 681239) and alvocidib (flavopiridol; NSC 649890) in patients with recurrent or refractory B-cell neoplasms. *Clin.Cancer Res*. 2011; 17:3388–97. [PubMed: 21447728]

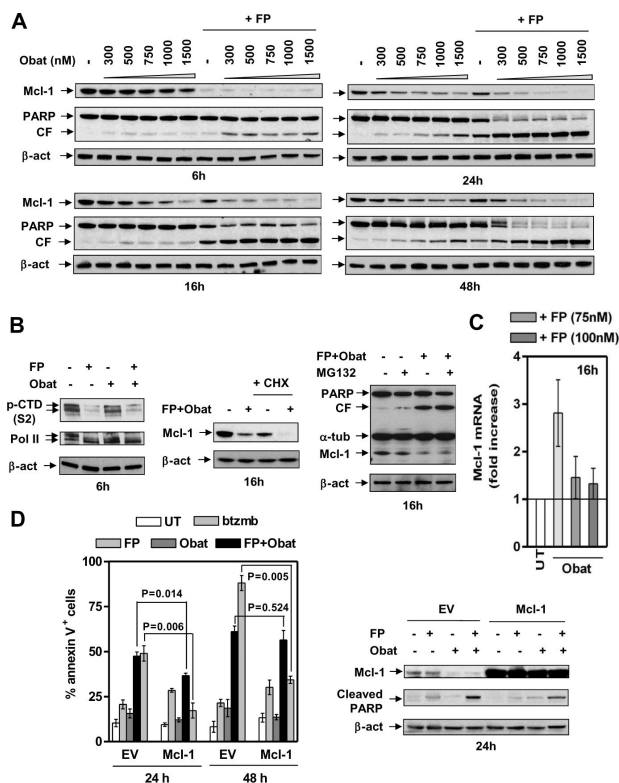
19. Chen S, Dai Y, Pei XY, Grant S. Bim upregulation by histone deacetylase inhibitors mediates interactions with the Bcl-2 antagonist ABT-737: evidence for distinct roles for Bcl-2, Bcl-xL, and Mcl-1. *Mol Cell Biol.* 2009; 29:6149–69. [PubMed: 19805519]
20. Bjorklund CC, Ma W, Wang ZQ, Davis RE, Kuhn DJ, Kornblau SM, et al. Evidence of a role for activation of Wnt/beta-catenin signaling in the resistance of plasma cells to lenalidomide. *J Biol Chem.* 2011; 286:11009–20. [PubMed: 21189262]
21. Albershardt TC, Salerni BL, Soderquist RS, Bates DJ, Pletnev AA, Kisselev AF, et al. Multiple BH3 mimetics antagonize antiapoptotic MCL1 protein by inducing the endoplasmic reticulum stress response and up-regulating BH3-only protein NOXA. *J Biol Chem.* 2011; 286:24882–95. [PubMed: 21628457]
22. Willis SN, Chen L, Dewson G, Wei A, Naik E, Fletcher JI, et al. Proapoptotic Bak is sequestered by Mcl-1 and Bcl-xL, but not Bcl-2, until displaced by BH3-only proteins. *Genes Dev.* 2005; 19:1294–305. [PubMed: 15901672]
23. Qin JZ, Ziffra J, Stennett L, Bodner B, Bonish BK, Chaturvedi V, et al. Proteasome inhibitors trigger NOXA-mediated apoptosis in melanoma and myeloma cells. *Cancer Res.* 2005; 65:6282–93. [PubMed: 16024630]
24. Akiyama T, Dass CR, Choong PF. Bim-targeted cancer therapy: a link between drug action and underlying molecular changes. *Mol Cancer Ther.* 2009; 8:3173–80. [PubMed: 19934277]
25. Li C, Li R, Grandis JR, Johnson DE. Bortezomib induces apoptosis via Bim and Bik up-regulation and synergizes with cisplatin in the killing of head and neck squamous cell carcinoma cells. *Mol Cancer Ther.* 2008; 7:1647–55. [PubMed: 18566236]
26. Anderson KC. Oncogenomics to target myeloma in the bone marrow microenvironment. *Clin Cancer Res.* 2011; 17:1225–33. [PubMed: 21411438]
27. Perez LE, Parquet N, Shain K, Nimmanapalli R, Alsina M, Anasetti C, et al. Bone marrow stroma confers resistance to Apo2 ligand/TRAIL in multiple myeloma in part by regulating c-FLIP. *J Immunol.* 2008; 180:1545–55. [PubMed: 18209050]
28. Nefedova Y, Landowski TH, Dalton WS. Bone marrow stromal-derived soluble factors and direct cell contact contribute to de novo drug resistance of myeloma cells by distinct mechanisms. *Leukemia.* 2003; 17:1175–82. [PubMed: 12764386]
29. Faber A, Corcoran RB, Ebi H, Sequist LV, Waltman BA, Chung E, et al. BIM expression in treatment naive cancers predicts responsiveness to kinase inhibitors. *Cancer Discov.* 2011; 1:352–65. [PubMed: 22145099]
30. Kelly PN, Strasser A. The role of Bcl-2 and its pro-survival relatives in tumorigenesis and cancer therapy. *Cell Death Differ.* 2011; 18:1414–24. [PubMed: 21415859]
31. Yip KW, Reed JC. Bcl-2 family proteins and cancer. *Oncogene.* 2008; 27:6398–406. [PubMed: 18955968]
32. Letai AG. Diagnosing and exploiting cancer's addiction to blocks in apoptosis. *Nat Rev Cancer.* 2008; 8:121–32. [PubMed: 18202696]
33. Romagnoli M, Seveno C, Wuillemme-Toumi S, Amiot M, Bataille R, Minvielle S, et al. The imbalance between Survivin and Bim mediates tumour growth and correlates with poor survival in patients with multiple myeloma. *Br J Haematol.* 2009; 145:180–9. [PubMed: 19298592]
34. Gomez-Bougie P, Bataille R, Amiot M. The imbalance between Bim and Mcl-1 expression controls the survival of human myeloma cells. *Eur J Immunol.* 2004; 34:3156–64. [PubMed: 15459900]
35. Derenne S, Monia B, Dean NM, Taylor JK, Rapp MJ, Harousseau JL, et al. Antisense strategy shows that Mcl-1 rather than Bcl-2 or Bcl-x(L) is an essential survival protein of human myeloma cells. *Blood.* 2002; 100:194–9. [PubMed: 12070027]
36. Morales AA, Gutman D, Lee KP, Boise LH. BH3-only proteins Noxa, Bmf, and Bim are necessary for arsenic trioxide-induced cell death in myeloma. *Blood.* 2008; 111:5152–62. [PubMed: 18354037]
37. Fennell DA, Chacko A, Mutti L. BCL-2 family regulation by the 20S proteasome inhibitor bortezomib. *Oncogene.* 2008; 27:1189–97. [PubMed: 17828309]
38. Hubner A, Barrett T, Flavell RA, Davis RJ. Multisite phosphorylation regulates Bim stability and apoptotic activity. *Mol Cell.* 2008; 30:415–25. [PubMed: 18498746]

39. Pei XY, Dai Y, Grant S. The small-molecule Bcl-2 inhibitor HA14-1 interacts synergistically with flavopiridol to induce mitochondrial injury and apoptosis in human myeloma cells through a free radical-dependent and Jun NH2-terminal kinase-dependent mechanism. *Mol Cancer Ther.* 2004; 3:1513–24. [PubMed: 15634644]
40. Huang H, Regan KM, Lou Z, Chen J, Tindall DJ. CDK2-dependent phosphorylation of FOXO1 as an apoptotic response to DNA damage. *Science.* 2006; 314:294–7. [PubMed: 17038621]
41. Yang Y, Zhao Y, Liao W, Yang J, Wu L, Zheng Z, et al. Acetylation of FoxO1 activates Bim expression to induce apoptosis in response to histone deacetylase inhibitor depsipeptide treatment. *Neoplasia.* 2009; 11:313–24. [PubMed: 19308286]
42. Gordon PM, Fisher DE. Role for the proapoptotic factor BIM in mediating imatinib-induced apoptosis in a c-KIT-dependent gastrointestinal stromal tumor cell line. *J Biol Chem.* 2010; 285:14109–14. [PubMed: 20231287]
43. Morales AA, Kurtoglu M, Matulis SM, Liu J, Siefker D, Gutman DM, et al. Distribution of Bim determines Mcl-1 dependence or codependence with Bcl-xL/Bcl-2 in Mcl-1-expressing myeloma cells. *Blood.* 2011; 118:1329–39. [PubMed: 21659544]
44. Gillings AS, Balmanno K, Wiggins CM, Johnson M, Cook SJ. Apoptosis and autophagy: BIM as a mediator of tumour cell death in response to oncogene-targeted therapeutics. *FEBS J.* 2009; 276:6050–62. [PubMed: 19788418]
45. Pritchard JR, Gilbert LA, Meacham CE, Ricks JL, Jiang H, Lauffenburger DA, et al. Bcl-2 family genetic profiling reveals microenvironment-specific determinants of chemotherapeutic response. *Cancer Res.* 2011; 71:5850–8. [PubMed: 21784872]
46. Jourdan M, De VJ, Mechti N, Klein B. Regulation of Bcl-2-family proteins in myeloma cells by three myeloma survival factors: interleukin-6, interferon-alpha and insulin-like growth factor 1. *Cell Death Differ.* 2000; 7:1244–52. [PubMed: 11175262]
47. Zhang B, Potyagaylo V, Fenton RG. IL-6-independent expression of Mcl-1 in human multiple myeloma. *Oncogene.* 2003; 22:1848–59. [PubMed: 12660820]
48. De BE, Bos TJ, Schuit F, Van Valckenborgh E, Menu E, Thorrez L, et al. IGF-1 suppresses Bim expression in multiple myeloma via epigenetic and posttranslational mechanisms. *Blood.* 2010; 115:2430–40. [PubMed: 20086250]
49. Moreaux J, Legouffe E, Jourdan E, Quittet P, Rème T, Lugagne C, et al. BAFF and APRIL protect myeloma cells from apoptosis induced by interleukin 6 deprivation and dexamethasone. *Blood.* 2004; 103:3148–57. [PubMed: 15070697]
50. O'Brien SM, Claxton DF, Crump M, Faderl S, Kipps T, Keating MJ, et al. Phase I study of obatoclox mesylate (GX15-070), a small molecule pan-Bcl-2 family antagonist, in patients with advanced chronic lymphocytic leukemia. *Blood.* 2009; 113:299–305. [PubMed: 18931344]



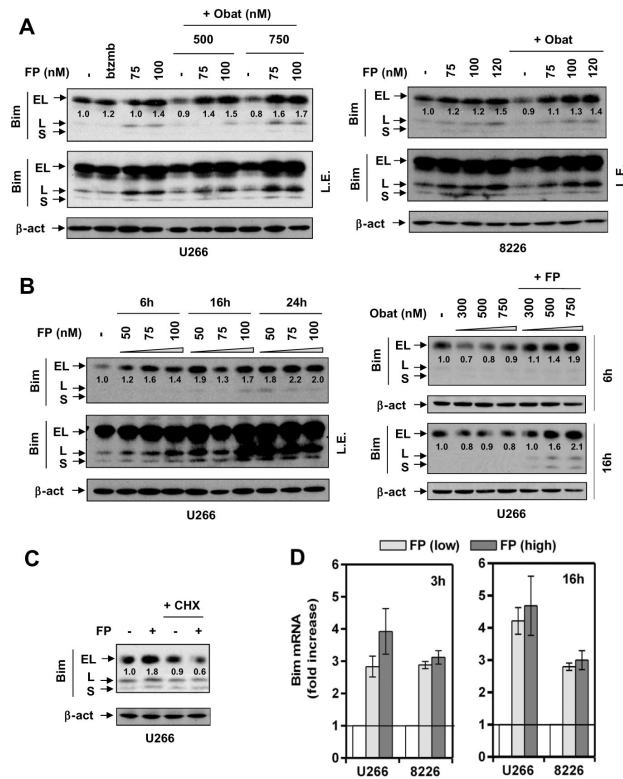


**Figure 1. The pan-Cdk inhibitor flavopiridol (FP) interacts synergistically with the pan-Bcl antagonist obatoclastin to induce mitochondria-dependent apoptosis in MM cells**  
 Human MM U266 cells were exposed (24 hr) to (A) 100 nM FP +/- 500 nM obatoclastin (Obat); (B, D) 75 – 100 nM FP +/- 500 – 750 nM obatoclastin; or (C) 80 – 110 nM FP +/- 400 – 550 nM obatoclastin at a fixed ratio (1 : 5). After drug treatment, cell death and related signaling pathways were analyzed by flow cytometry after stained with (A) DiOC<sub>6</sub> (Δψ<sub>m</sub>) and 7AAD (cell death), or (B, C) Annexin V-FITC/PI (early and late apoptosis); and (D) immunoblot for cytosolic S-100, mitochondria-enriched fractions, or for whole cell lysates. β-actin = loading controls for S-100 and whole cell lysate; Bak = loading control for mitochondrial fraction; CF = cleaved fragments.



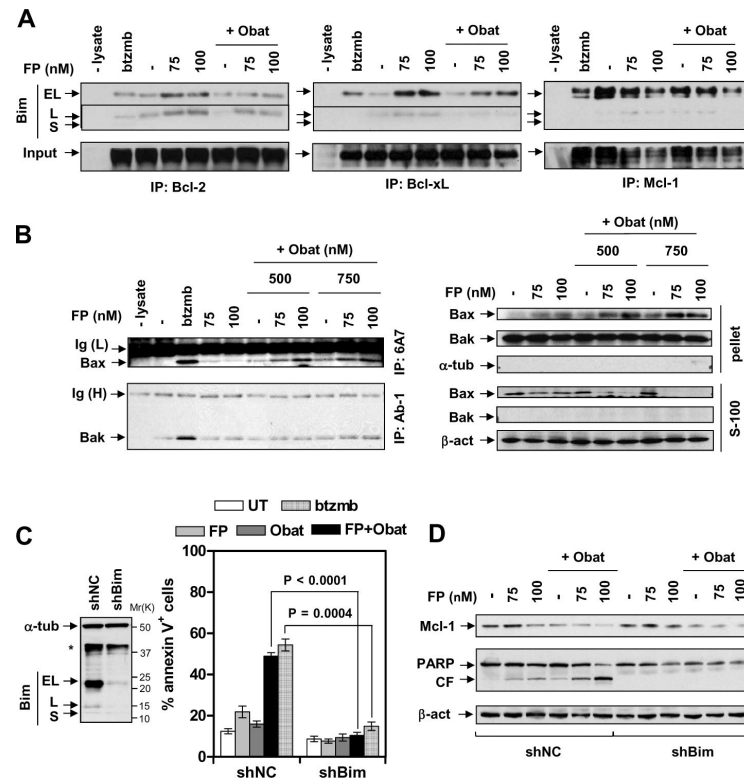
**Figure 2. FP/obatoclox down-regulates Mcl-1**

U266 cells were treated as follows, (A) 300 nM – 1.5  $\mu$ -M obatoclox +/- 100 nM FP for 6, 16, 24, and 48 hr; (B, left) 100 nM FP +/- 500 nM obatoclox for 6 hr; (B, middle) 100 nM FP + 500 nM obatoclox, in the presence or absence of 1  $\mu$ M CHX, for 16 hr; (B, right) 100 nM FP + 500 nM obatoclox, with or without the addition of 300 nM MG-132, for 16 hr. After drug treatment, Immunoblot analysis was performed to monitor Mcl-1 protein levels and PARP cleavage, or total and phosphorylated (serine 2, CTD) RNA Pol II. (C) U266 cells were incubated with 500 nM obatoclox +/- 75 – 100 nM FP for 16 hr, after which Mcl-1 mRNA levels were assessed by quantitative RT-PCR, using GAPDH as control (see Supplemental Materials and Methods). (D) U266 cells were stably transfected with human full length Mcl-1 or empty vector (EV). Cells were exposed (24 hr) to 100 nM FP +/- 500 nM obatoclox, or 4 nM bortezomib for comparison, and then subjected to flow cytometry (left) or immunoblot analysis (right).



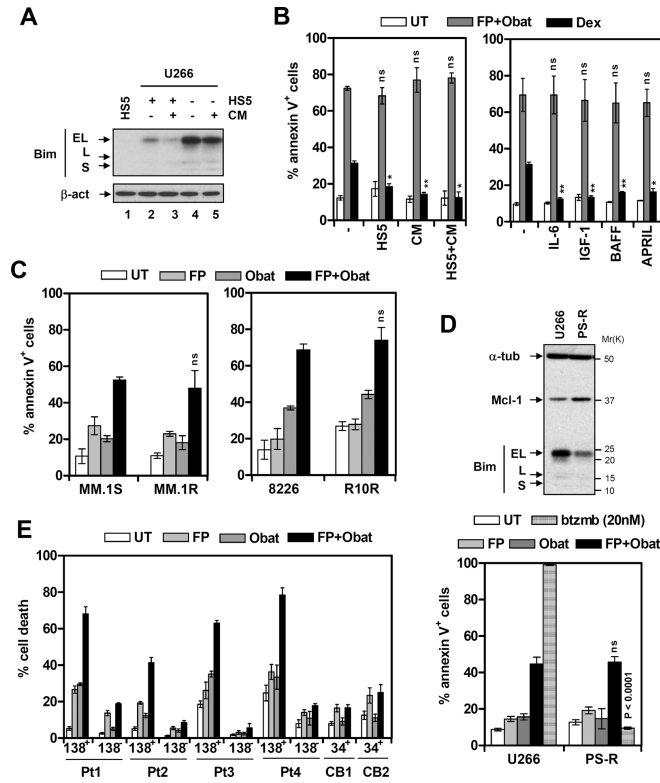
### Figure 3. FP induces Bim expression at the transcriptional level

(A) U266 cells were exposed (24 hr) to 75 – 100 nM FP +/- 500 – 750 nM obatoclast, or 4 nM bortezomib for comparison (left); RPMI8226 cells were exposed (24 hr) to 75 – 120 nM FP +/- 750 nM obatoclast (right). (B) U266 were incubated with 50 – 100 nM FP for 6, 16, and 24 hr (left); or 300 – 750 nM obatoclast +/- 100 nM FP for 6 and 16 hr (right). (C) U266 cells were treated with 100 nM FP +/- 1 μM CHX for 24 hr. After drug treatment, immunoblot analysis was performed to monitor protein expression of three isoforms (EL, L, and S) of Bim. For changes in BimEL protein levels, the density of blots was quantified; values reflect the ratio of integrated densitometric determinations between untreated and drug-treated cells, with normalization against β-actin. L.E. = long exposure. (D) Cells were exposed to low (U266, 75 nM; 8226, 100 nM) or high (U266, 100 nM; 8226, 120 nM) concentrations of FP for 3 hr and 16 hr, respectively, after which quantitative RT-PCR was performed to determine mRNA levels of Bim, using β-actin as control.



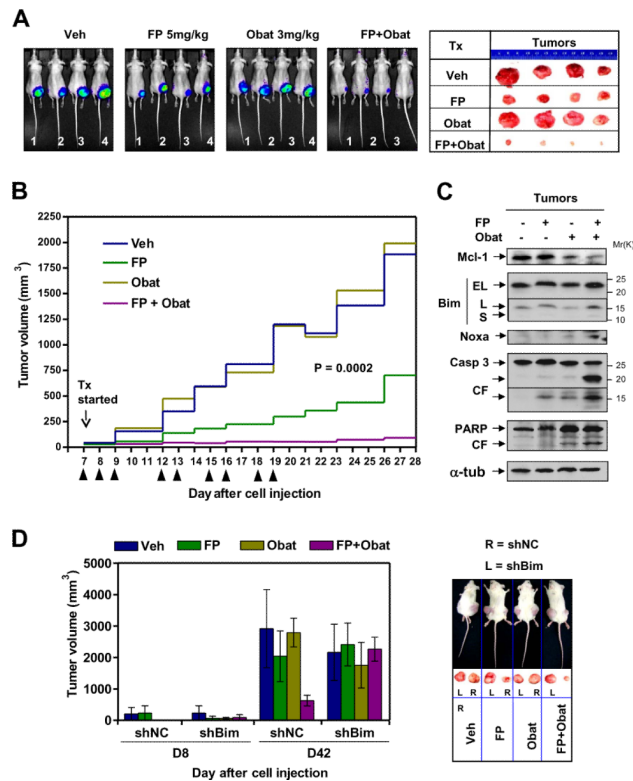
**Figure 4. Obatoclox unleashes Bim from Bcl-2, Bcl-xL, and Mcl-1 in FP-treated cells, activating Bax/Bak**

(A) After 24 hr-treatment with 75 – 100 nM FP +/- obatoclox (A, 500 nM; B, 500 – 750 nM), or 4 nM bortezomib for comparison, U266 cells were lysed in 1% CHAPS buffer and subjected to co-immunoprecipitation (IP). Blots were stripped and subsequently reprobed with Bcl-2, Bcl-xL, or Mcl-1 (input) respectively. (B) U266 cells were treated as described in 4A, IP was performed with 6A7 or AB-1 monoclonal antibodies which specifically recognize conformationally-changed Bax and Bak respectively, and immunoblotted for Bax or Bak (left). IP without cell lysate was performed as a control. Alternatively, cytosolic (S-100) and mitochondria-enriched membrane (pelleted) fractions were separated and subjected to immunoblot for Bax and Bak (right). (C, D) U266 cells were stably transfected with shRNA targeting human Bim (shBim, clone ID #1) or scramble sequence as negative control (shNC) (C, left). Cells were then treated (24 hr) with FP (C, 100 nM; D, 75 – 100 nM) +/- 500 nM obatoclox, or 4 nM bortezomib for comparison, after which apoptosis and Mcl-1 expression were monitored by flow cytometry (C, right panel) or immunoblot analysis (D) respectively.



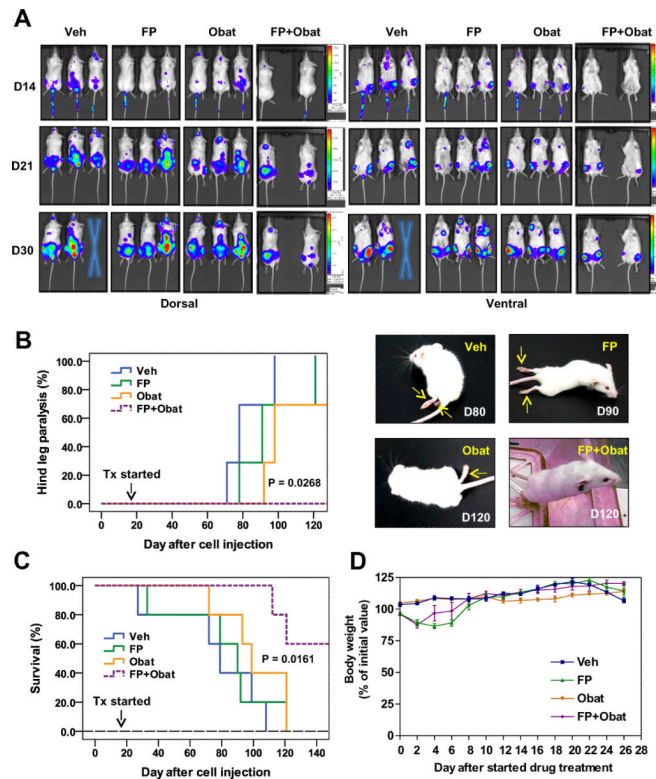
**Figure 5. FP/obatoxclax circumvents various forms of MM-related drug resistance**  
 (A) U266 cells were cultured (24 hr) under either regular conditions (RPMI1640 with 10% FBS, lane 4) or with human BM stromal HS-5 cells (lane 2), HS-5-conditional medium (lane 5), or both (lane 3). Immunoblot analysis was performed to monitor Bim expression. HS-5 cell lysate (lane 1) was loaded for comparison. (B) U266 cells were exposed (24 hr) to 100 nM FP + 500 nM obatoxclax under the indicated conditions (left), or in the presence of human recombinant 100 ng/mL IL-6, 400 ng/ml IGF-1, 200 ng/ml BAFF, or 200 ng/ml APRIL (right, ns = not significant,  $P > 0.05$ ). In parallel, cells were treated with 10  $\mu$ M dexamethasone for comparison ( $* P < 0.05$ ,  $** P < 0.01$ ). The percentage of apoptotic (annexin V<sup>+</sup>) cells was then determined by flow cytometry. (C) Dexamethasone- (MM.1R) and revlimid-resistant (R10R) cells, as well as their drug-naïve counterparts (MM.1S and RPMI8226), were treated (24 hr) with FP (1S and 1R, 75 nM; 8226 and R10R, 100 nM) +/- obatoxclax (1S and 1R, 500 nM; 8226 and R10R, 750 nM). The percentage of apoptotic cells was then determined by flow cytometry. (D) The bortezomib-resistant U266 cell line (PS-R) was generated by continuously culturing U266 cells in gradually increasing concentrations of bortezomib. Immunoblot analysis was performed to assess expression of Mcl-1 and Bim on the same membrane (upper). PS-R and its parental cell line were treated (24 hr) with 75 nM FP +/- 500 nM obatoxclax, or 20 nM bortezomib for comparison ( $P < 0.0001$ ), after which the extent of apoptosis was determined by flow cytometry. (E) CD138<sup>+</sup> and CD138<sup>-</sup> cells were isolated from BM samples of four patients with MM (Pt 1 – 4), and CD34<sup>+</sup> cells isolated from two cord blood (CB) samples. Cells were exposed (24 hr) to 75 – 100 nM FP +/- 300 – 500 nM obatoxclax, after which percentage of cell death was assessed by 7AAD staining followed by flow cytometry.





**Figure 6. FP/obatoclax suppresses MM tumor growth in subcutaneous flank murine models, an event diminished by Bim shRNA**

(A–C) Mouse model #1 - subcutaneous (s.c.) flank RPMI8226 model: athymic NCr-nu/nu mice were subcutaneously inoculated in the right rear flank with  $5 \times 10^6$  RPMI8226 cells carrying luciferase. Treatment was initiated after luciferase activity was detected (7 days after injection of tumor cells). Mice were treated (indicated by arrow heads) with FP (5mg/kg, i.p.)  $\pm$  obatoclax (3mg/kg, i.m.), daily for the first three days. After a two-day interval (due to poor absorption of obatoclax after i.m. injection), the schedule was adjusted to twice every three days for an additional three cycles.  $n = 4$  per group. Tumor growth was monitored every other day using the IVIS 200 imaging system (A, left, images shown were captured at day 28), and tumor size measured by calipers (B). When tumor size reached  $2,000 \text{ mm}^3$ , mice were euthanized, and tumors removed from mice (A, right), after which tumor tissues were homogenized and subjected to immunoblot analysis (C). A discernible loss of body weight ( $< 10\%$  of initial weight) occurred in both obatoclax and FP/obatoclax groups during the first week of treatment, which recovered soon after the treatment schedule was adjusted. There was no discernible loss of body weight in another two groups throughout the experiment. (D) Mouse model #2 – s.c. dual-side flank U266 model: NOD scid gamma mice were subcutaneously inoculated in each flank with  $1 \times 10^7$  U266 cells carrying shRNA targeting Bim (shBim, left flank) or negative control (shNC, right flank). Treatment was initiated after tumors were visible (8 days after injection of tumor cells). FP (3mg/kg, i.p.)  $\pm$  obatoclax (3mg/kg, i.p.) were administered daily for the first four days, followed by once every two days for an additional seven cycles.  $n = 4$  per group. Tumor size was measured every other day (left); when tumor size reached  $2,000 \text{ mm}^3$ , mice were euthanized, and tumors removed from mice (right). There was no significant loss of body weight in any groups throughout the experiment. Tumor volumes were calculated using the formula  $(L \times W^2)/2$ , with L and W representing length and width respectively.



**Figure 7. The FP/obatoclax regimen is active in an intravenous BM-homing murine model** (A–D) Mouse model #3 – intravenous (i.v.) orthotopic U266 model: NOD scid gamma mice were intravenously injected via tail vein with  $5 \times 10^6$  U266 carrying luciferase. After luciferase signals were visible (14 days after injection of tumor cells), FP (5mg/kg, i.p.)  $\pm$  obatoclax (3mg/kg, i.p.) were administered daily for first five days, followed by FP (3mg/kg)  $\pm$  obatoclax (3mg/kg) twice every three days for additional seven cycles.  $n = 5$  per group. Tumor growth was monitored every other day by imaging luciferase activity (A). Cross = dead. Kaplan-Meier analysis was performed to analyze occurrence of hind-leg paralysis (B, arrows), as well as survival of animals (C). Loss of body weight ( $< 20\%$  of initial weight) occurred within the first week of treatment in the FP and FP/obatoclax groups, indicating toxicity of 5mg/kg FP in these mice, which recovered after reduction of the FP dose to 3mg/kg and adjustment of the treatment schedule (D).