

# Molecular Identification of *Oesophagostomum* and *Trichuris* Eggs Isolated from Wild Japanese Macaques

Naoki Arizono<sup>1,2,\*</sup>, Minoru Yamada<sup>1</sup>, Tatsuya Tegoshi<sup>1</sup> and Kotaro Onishi<sup>1</sup>

<sup>1</sup>Department of Infectious Diseases, Kyoto Prefectural University of Medicine, Kyoto 602-8566; <sup>2</sup>Kyoto Prefectural Institute of Public Health and Environment, Kyoto 612-8369, Japan

**Abstract:** Natural habitat fragmentation and reducing habitat quality have resulted in an increased appearance of Japanese macaques, *Macaca fuscata* (Gray, 1870), in suburban areas in Japan. To investigate the risk of zoonotic infections, a coprological survey of helminth eggs passed by wild Japanese macaques was carried out in 2009 and 2010 in Shiga Prefecture, Japan. Microscopic examination found helminth eggs in high prevalence, and nucleotide sequencing of DNA extracted from the eggs identified *Oesophagostomum* cf. *aculeatum* and *Trichuris trichiura*. A fecal culture also detected infective larvae of *Strongyloides fuelleborni*. These zoonotic nematodes pose a potential health issue to local people in areas frequented by Japanese macaques.

**Key words:** *Oesophagostomum aculeatum*, *Trichuris trichiura*, *Strongyloides fuelleborni*, Japanese macaque, zoonosis

The Japanese macaque, *Macaca fuscata* (Gray, 1870), is unique to the Japanese archipelago and is the only non-human primate that inhabits these islands, with an estimated total population of 100,000 [1]. Advancing forest habitat fragmentation and reducing habitat quality in recent years have forced Japanese macaques to appear frequently at forest edges and in farmland near residential areas. Japanese macaques carry some helminths potentially zoonotic to humans, including nematodes, such as *Oesophagostomum aculeatum*, *Strongyloides fuelleborni*, and *Trichuris trichiura* [1,2]. Traditionally, however, specific diagnosis of gastrointestinal nematode infections in wild non-human primates is based on the detection of eggs in feces, where the morphological characteristics of ova alone may not be reliable enough for species identification. Thus, to identify the helminths carried by wild Japanese macaques, and to evaluate the risk of zoonotic infections to humans, we carried out molecular identification of eggs passed in feces by sequencing some nuclear targets.

Fecal samples were collected in May 2009 and June 2010 from the ground at the foot of mountains in Takashima city,

Shiga Prefecture, Japan. This district is a rather sparsely-populated area adjacent to farmland that is frequented by free-roaming macaques at irregular intervals. That the fecal samples were derived from Japanese macaques was confirmed by local residents who had often seen monkeys and their feces at very close proximity to their houses. A total of 36 fecal samples were collected in 2009 and 2010. Although the length of time the feces had remained on the ground could not be determined, they appeared to have been there only for a few days.

The fecal samples, 2 g each, were dissolved in 200 ml of distilled water, sieved through 2 sheets of cotton gauze, and left to stand for 1-2 hr to obtain precipitates. After 2 additional cycles of dissolution and sieving, the precipitates finally obtained were subjected to microscopic examination for helminth eggs. One fecal sample was subjected to fecal culture using a filter paper test-tube method.

To molecularly identify helminth eggs, 10-30 helminth eggs (*Oesophagostomum* sp. or *Trichuris* sp.) were collected under a stereoscopic microscope. Approximately 50 *Strongyloides* filariform larvae were collected from the bottom of culture test tubes. DNA was extracted using TaKaRa DEXPAT® (Takara Bio Inc., Shiga, Japan), which was originally designed to retrieve small amounts of DNA from paraffin embedded tissue sections. The primers used for PCR amplification were: NC1 and NC2 [3] for internal transcribed spacer (ITS)2 of *Oesophagostomum* spp.; 5'-CAAGGTTTTCGTAGGTGAA-3' and 5'-CTCTT-

•Received 14 March 2012, revised 23 April 2012, accepted 12 May 2012.

\*Corresponding author (arizonon@koto.kpu-m.ac.jp)

© 2012, Korean Society for Parasitology

This is an Open Access article distributed under the terms of the Creative Commons Attribution Non-Commercial License (<http://creativecommons.org/licenses/by-nc/3.0>) which permits unrestricted non-commercial use, distribution, and reproduction in any medium, provided the original work is properly cited.

CATCGACCTATGAAC-3' for ITS1 of *Strongyloides* spp.; and 5'-GCTAAGCAGAGCCCTAAATT-3' and 5'-TCCGCTTAACGATATGCTTA-3' for ITS2 of *Strongyloides* spp. The 18S rRNA of *Trichuris* spp. was amplified in 4 overlapping fragments using the forward and reverse primers 5'-AAGCCGCGAATGGC-TCATTA-3' and 5'-CTGCTGCCTTCCTTGGATGT-3' for the first fragment, 5'-CCATGGTGACAACGGTTAAC-3' and 5'-ATTGGTCGTCTT-GCTGCGAT-3' for the second fragment, 5'-ACGGGGACATT-CGTATTGCT-3' and 5'-GCTAGTTAGTAGGCCAGAGT-3' for the third fragment, and 5'-TTCAGTGGGTAGTGGTGCAT-3' and 5'-CCTACGGAAACCTTGTTACG-3' for the last fragment. The amplified products were directly sequenced on both strands. The nucleotide sequences determined in this study were deposited in DNA databases with the accession numbers indicated in the text, Table, and/or Figures.

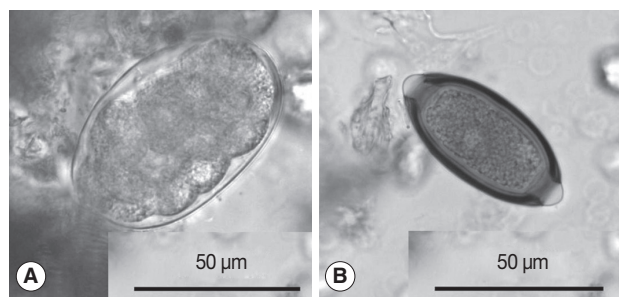
Microscopic examination revealed eggs similar to those of hookworms and eggs of *Trichuris* sp. in 50% and 38% of 18 fecal samples examined in 2009, and 38% and 31% of 18 fecal samples examined in 2010. Eggs similar to those of *Strongyloides* sp. were also found in a few fecal samples in both years. Fecal cultures of 1 specimen collected in 2010 produced filariiform larvae of *Strongyloides* sp. Cysts of *Entamoeba coli* were also occasionally found.

Hookworm-like eggs found in the present survey were thin-shelled, ovoidal, segmented into  $\geq 8$  cells, and measured 69-78 by 41-48 (mean:  $74 \times 45$ )  $\mu\text{m}$  (Fig. 1A). Non-human primates harbor strongylid nematodes, such as *Oesophagostomum* spp. and *Termidens* spp., the eggs of which are hardly distinguishable from those of hookworms. Within these species, *O. aculeatum* is confined to Asia and infects primates, such as Japanese macaques and cynomolgus monkey (*Macaca fascicularis*) [4-7], while *Oesophagostomum bifurcum* and *Oesophagostomum stephanostomum* infect African primates as well as rhesus monkeys (*Macaca mulatta*) in Asia [3,6,8,9]. *Termidens deminutus* occurs in

primates in Asia and Africa [5,10,11], but has not been recorded in Japanese macaques. Thus, the type of ova found in the present study has been traditionally identified as that of *O. aculeatum*, as long as it was derived from Japanese macaques [1,2]. Indeed, the dimensions of the hookworm-like eggs found in the present study were compatible with those of *O. aculeatum* (69-86 by 35-55  $\mu\text{m}$ ), the measurements of which were based on intrauterine eggs from *O. aculeatum* female worms, but were larger than those of *T. deminutus* (57-65 by 36-45  $\mu\text{m}$ ) [4].

ITS2 sequencing was carried out in 2 specimens containing hookworm-like eggs collected in 2009 and 2010. Sequences obtained in both specimens were identical and deposited in public databases (AB586134). Unfortunately, we could neither obtain morphologically identified *O. aculeatum* adult worms for sequencing, nor find any reference sequence of *O. aculeatum* in the literature or DNA databases. Nevertheless, a BLAST search against the EMBL databases identified sequences of *Oesophagostomum* sp. from *M. fuscata* (HM067976) with 99.0% identity, followed by those of *O. bifurcum* and other *Oesophagostomum* species with identities  $\leq 94.0\%$ . Pairwise comparisons of ITS2 sequences showed that the putative *O. aculeatum* from Japanese macaques were clearly distinguished from *O. bifurcum* and *O. stephanostomum* with genetic distances equal to or over 0.047, and from *T. deminutus* with genetic distances of  $\geq 0.056$  (Table 1). Thus, we preliminarily identified the eggs as *Oesophagostomum* cf. *aculeatum* until it could be verified by sequencing nucleotides of morphologically identified *O. aculeatum* adult worms.

*Trichuris* eggs obtained in the present study measured 58-63  $\times$  28-31 (mean:  $61 \times 29$ )  $\mu\text{m}$  (Fig. 1B). The eggs of human *T. trichiura* are divided into 2 morphotypes; the common type with a dimension of  $56 \pm 2$  by  $26 \pm 1$   $\mu\text{m}$ , and the less common type with larger dimensions ( $75 \pm 4$  by  $31 \pm 2$   $\mu\text{m}$ ) [12]. The eggs of Japanese macaque-origin were similar to those of the common variety of *T. trichiura* eggs. Sequencing of 18S rRNA in *Trichuris* eggs from Japanese macaques and in 2 adult worms of *T. trichiura* from 2 Japanese patients as a reference was carried out. Pairwise comparisons showed that *Trichuris* derived from Japanese macaques (AB699092) differed from *T. trichiura* from 2 Japanese patients (AB699090) and another *T. trichiura* worm of human origin (GQ352553) with genetic distances of 0.003 and 0.005, respectively. Its genetic distances from *Trichuris suis*, *Trichuris vulpis*, and *Trichuris muris* were  $\geq 0.028$ . Phylogenetic analyses showed that *Trichuris* eggs from Japanese macaques clustered unequivocally with *T. trichiura* of



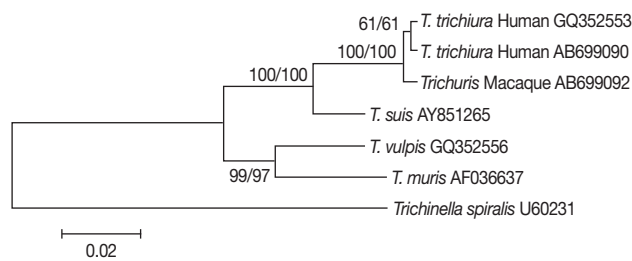
**Fig. 1.** Eggs found in the feces of Japanese macaques. (A) *Oesophagostomum* cf. *aculeatum*. (B) *Trichuris trichiura*.

**Table 1.** Pairwise comparison of the number of base differences<sup>a</sup> per site in the ITS-2 sequences of *Oesophagostomum* spp, *Teridens deminutus*, and the 2 predominant hookworms of humans, *Ancylostoma duodenale* and *Necator americanus*

Species	1	2	3	4	5	6	7	8	9	10	11	12
1 Present specimen												
2 <i>O. sp-Macaca</i>	0.005											
3 <i>O. bifurcum</i>	0.047	0.042										
4 <i>O. stephanostomum</i>	0.056	0.052	0.024									
5 <i>T. deminutus</i> TdB	0.056	0.051	0.052	0.047								
6 <i>T. deminutus</i> TdM	0.070	0.065	0.062	0.066	0.028							
7 <i>O. dentatum</i>	0.079	0.074	0.085	0.090	0.098	0.112						
8 <i>O. columbianum</i>	0.079	0.075	0.067	0.071	0.085	0.094	0.094					
9 <i>O. venulosum</i>	0.135	0.130	0.123	0.118	0.126	0.135	0.144	0.146				
10 <i>O. longispicularis</i>	0.140	0.144	0.156	0.165	0.159	0.150	0.145	0.155	0.177			
11 <i>O. radiatum</i>	0.182	0.182	0.167	0.175	0.160	0.169	0.183	0.193	0.237	0.239		
12 <i>A. duodenale</i>	0.282	0.282	0.277	0.277	0.274	0.288	0.284	0.280	0.333	0.303	0.335	
13 <i>N. americanus</i>	0.446	0.451	0.445	0.457	0.460	0.465	0.455	0.436	0.496	0.455	0.473	0.425

GenBank Accession numbers: 1, AB586134; 2, HM067976; 3, AF136575; 4, AF136576; 5, AJ888730; 6, AJ888729; 7, AJ889569; 8, AJ006150; 9, Y10790; 10, Y10801; 11, AJ006149; 12, EU344797; 13. AJ001599.

<sup>a</sup>There were a total of 330 positions in the final dataset.



**Fig. 2.** Phylogenetic analysis of *Trichuris* species based on 18S rRNA sequences. Nucleotide sequences were aligned using the ClustalW software. Phylogenetic analyses were conducted using the MEGA 5 software. Genetic relationships were inferred by the Neighbor-Joining (NJ) method using *Trichinella spiralis* as an outgroup. The final data set contained 1,629 positions. The scale bar indicates nucleotide substitutions per site. The Maximum Parsimony (MP) method resulted in the same topology tree, and 2 sets of bootstrap values (1,000 replicates) by the NJ and MP are shown from left to right. *Trichuris* Macaque represents that from Japanese macaques analyzed in the present study.

human origin (Fig. 2). From these results, we identified the eggs as *T. trichiura*.

Filariform larvae of *Strongyloides* sp. produced in a fecal culture of monkey feces were 502-603 µm in length with a body width of 13-16 µm. The esophagus accounted for 40-45% of body length. The tail measured 66-82 µm in length. ITS1 sequences of the filariform larvae obtained in the present study (AB699093) were similar to those of *S. fuelleborni* (AB272235, U43581), with genetic distances of 0.013-0.019, while they showed larger differences from *Strongyloides callosciureus* (AB27-2229), *Strongyloides procyonis* (AB205054), *Strongyloides stercora-*

*lis* (U43578), *Strongyloides ratti* (U43580), and *Strongyloides cebus* (AB272236), with genetic distances of ≥0.165. ITS2 sequences of the present isolates (AB699094) were also similar to those of *S. fuelleborni* (AB272235) with a genetic distance of 0.009. Thus, the filariform larvae in the present study were identified as *S. fuelleborni*.

The present coprological survey of wild Japanese macaques detected eggs of *Oesophagostomum* cf. *aculeatum* and *T. trichiura* at a rather high prevalence, as well as infective larvae of *S. fuelleborni*, confirming previous reports that the eggs of *O. aculeatum*, *T. trichiura*, and *S. fuelleborni* were found in 30.4%, 60.1%, and 29.0% of Japanese macaques, respectively [1].

*Oesophagostomum* infections in humans result in single or multiple nodular lesions mainly in the colon and sometimes in extraintestinal tissues. A number of *O. bifurcum* infections in humans have been reported, with the majority from Africa, especially northern Togo and Ghana [9,13]. A few cases of possible *O. aculeatum* infections have also been reported in Southeast Asia [14-16]. Except for those cases in Togo and Ghana, larvae often do not complete development in the human body and juveniles remain in their intestinal nodules, which makes diagnosis difficult. The infection of humans with *Oesophagostomum* spp. is considered to occur via ingestion of the 3rd-stage larvae in contaminated water, food, and soil. Although no *Oesophagostomum* infection in humans has been reported in Japan, people should be aware of the risk of accidental infection.

It has been widely accepted that the *Trichuris* species, which infects non-human primates, is similar to that in man and

cross infection to humans is possible [6]. Indeed, previous studies showed that experimental infection of man with *Trichuris* ova from Japanese macaques resulted in patent infection [17]. The present phylogenetic analyses based on 18S rRNA sequences showed a very close relationship of *Trichuris* of macaque-origin to that of human-origin, with minor genetic divergence. Previous studies by scanning electron microscopy showed that *T. trichiura* from non-human primates exhibited some differences in pericloacal papillae from those of human origin; although the authors considered the findings insufficient to create a new species [18]. Thus, it remains to be elucidated whether population genetic substructuring exists within *T. trichiura* from different primate hosts by analyzing such as mitochondrial DNA sequences, and more studies are needed to clarify whether *T. trichiura* of macaque-origin accounts for at least some cases of human trichuriasis.

*S. fuelleborni* is zoonotic: it has been reported that 3 out of 10 cases of human strongyloidiasis in Zambia were due to *S. fuelleborni* [19-21]. However, genetic substructuring of *S. fuelleborni* exists worldwide according to geographical localities [21], and further studies are needed to clarify whether infectivity of *S. fuelleborni* of Japanese-macaque origin to humans is similar to those from different localities.

Besides those helminth ova found in the present study, eggs of the tapeworm *Bertiella studeri* have been detected in 8.9% of fecal samples from Japanese macaques [1], and at least 5 cases of accidental infection of humans with *B. studeri* have occurred in Japan [22,23]. Non-human primates are also potential reservoirs for zoonotic transmission of enteric protozoans. Indeed, *Giardia intestinalis* (assemblage B) and *Entamoeba* spp., such as *E. dispar* and *E. nuttalli*, have been isolated from Japanese macaques [24-26].

In conclusion, the present coprological survey of wild Japanese macaques identified *Oesophagostomum* cf. *aculeatum*, *T. trichiura*, and *S. fuelleborni* based on sequencing nuclear targets. Further accumulation of sequence data will lead to the identification of these parasites from Japanese macaques based upon more solid evidence. Although further studies are needed to determine the actual risk of zoonotic transmissions of helminths between Japanese macaques and humans, people and health workers should be aware of the potential risk of accidental zoonotic helminth infections in humans living in areas frequented by Japanese macaques.

## ACKNOWLEDGMENT

This work was supported by the General Research Fund of KPUM.

## REFERENCES

- Fooden J, Aimi M. Systematic review of Japanese macaques, *Macaca fuscata* (Gray, 1870). Fieldiana Zoology new series, no.104. Chicago, USA. Field Museum of Natural History. 2005, p 1-200.
- MacIntosh AJ, Hernandez AD, Huffman MA. Host age, sex, and reproductive seasonality affect nematode parasitism in wild Japanese macaques. *Primates* 2010; 51: 353-364.
- Gasser RB, Woods WG, Huffman MA, Blotkamp J, Polderman AM. Molecular separation of *Oesophagostomum stephanostomum* and *Oesophagostomum bifurcum* (Nematoda: Strongyloidea) from non-human primates. *Int J Parasitol* 1999; 29: 1087-1091.
- Tanaka H, Fukui M, Yamamoto H, Hayama S, Kodera S. Studies on the identification of common intestinal parasites of primates. *Bull Exp Anim* 1962; 11: 111-116 (in Japanese).
- Hashimoto I, Honjo S. Survey of helminth parasites in cynomolgus monkeys (*Macaca irus*). *Japan J Med Sci Biol* 1966; 19: 218.
- Flynn RJ. Parasites of Laboratory Animals. Ames, USA. Iowa State University Press. 1973, p 212-214.
- Dewit I, Dittus W, Gibson D, Harris E, Verduyck J. Gastro-intestinal helminths in a natural population of *Macaca sinica* and *Presbytis* spp. at Polonnaruwa, Sri Lanka. *Primates* 1991; 32: 391-395.
- Graham GL. Parasitism in monkeys. *Ann N Y Acad Sci* 1960; 85: 842-860.
- Gasser RB, de Gruijter JM, Polderman AM. Insights into the epidemiology and genetic make-up of *Oesophagostomum bifurcum* from human and non-human primates using molecular tools. *Parasitology* 2006; 132: 453-460.
- Schindler AR, de Gruijter JM, Polderman AM, Gasser RB. Definition of genetic markers in nuclear ribosomal DNA for a neglected parasite of primates, *Ternidens deminutus* (Nematoda: Strongylida) - diagnostic and epidemiological implications. *Parasitology* 2005; 131: 539-546.
- Hemsrichart V. *Ternidens deminutus* infection: First pathological report of a human case in Asia. *J Med Assoc Thai* 2005; 88: 1140-1143.
- Yoshikawa H, Yamada M, Matsumoto Y, Yoshida Y. Variations in egg size of *Trichuris trichiura*. *Parasitol Res* 1989; 75: 649-654.
- Polderman AM, Blotkamp J. *Oesophagostomum* infections in humans. *Parasitol Today* 1995; 11: 451-456.
- Ross RA, Gibson DI, Harris EA. Cutaneous oesophagostomiasis in man. *Trans R Soc Trop Med Hyg* 1989; 83: 394-395.
- Karim N, Yang CO. Oesophagostomiasis in man: Report of the first Malaysian case with emphasis on its pathology. *Malays J Pathol* 1992; 14: 19-24.
- Kamel AGM, Yang CO, Norazah A. *Oesophagostomum aculeatum*,

- the nodular worm causing helminthoma in man in Malaysia. *Int Med J* 1995; 2: 287-290.
17. Imada I, Horii Y, Usui M. The experiment of artificial infection to men and monkeys by eggs of *Trichuris trichiura* from Japanese monkey. *Jpn J Parasitol* 1986; 29: S30 (in Japanese).
  18. Ooi HK, Tenora F, Itoh K, Kamiya M. Comparative study of *Trichuris trichiura* from non-human primates and from man, and their differences with *T. suis*. *J Vet Med Sci* 1993; 55: 363-366.
  19. Hira PR, Patel BG. *Strongyloides fülleborni* infections in man in Zambia. *Am J Trop Med Hyg* 1977; 26: 640-643.
  20. Olsen A, van Lieshout L, Marti H, Polderman T, Polman K, Steinmann P, Stothard R, Thybo S, Verweij JJ, Magnussen P. Strongyloidiasis - the most neglected of the neglected tropical diseases? *Trans R Soc Trop Med Hyg* 2009; 103: 967-972.
  21. Hasegawa H, Sato H, Fujita S, Nguema PP, Nobusue K, Miyagi K, Kooriyama T, Takenoshita Y, Noda S, Sato A, Morimoto A, Ikeda Y, Nishida T. Molecular identification of the causative agent of human strongyloidiasis acquired in Tanzania: Dispersal and diversity of *Strongyloides* spp. and their hosts. *Parasitol Int* 2010; 59: 407-413.
  22. Ando K, Ito T, Miura K, Matsuoka H, Chinzei Y. Infection of an adult in Mie Prefecture, Japan by *Bertiella studeri*. *Southeast Asian J Trop Med Public Health* 1996; 27: 200-201.
  23. Yamada M, Uchikawa R, Tegoshi T, Onishi K, Arizono N, Kawahara A, Yamamoto H, Kodama T, Morita Y, Tashiro K. Two cases of human infection with *Bertiella studeri* in Japan. *Clin Parasitol* 2009; 20: 34-36 (in Japanese).
  24. Itagaki T, Kinoshita S, Aoki M, Itoh N, Saeki H, Sato N, Uetsuki J, Izumiyama S, Yagita K, Endo T. Genotyping of *Giardia intestinalis* from domestic and wild animals in Japan using glutamate dehydrogenase gene sequencing. *Vet Parasitol* 2005; 133: 283-287.
  25. Tachibana H, Cheng XJ, Kobayashi S, Matsubayashi N, Gotoh S, Matsubayashi K. High prevalence of infection with *Entamoeba dispar*, but not *E. histolytica*, in captive macaques. *Parasitol Res* 2001; 87: 14-17.
  26. Tachibana H, Yanagi T, Akatsuka A, Kobayashi S, Kanbara H, Tsutsumi V. Isolation and characterization of a potentially virulent species *Entamoeba nuttalli* from captive Japanese macaques. *Parasitology* 2009; 136: 1169-1177.

