

RESEARCH ARTICLE

Open Access

# Mitochondrial genome evolution in species belonging to the *Phialocephala fortinii* s.l. - *Acephala applanata* species complex

Angelo Duò<sup>1</sup>, Rémy Bruggmann<sup>2</sup>, Stefan Zoller<sup>3</sup>, Matthias Bernt<sup>4</sup> and Christoph R. Grünig<sup>1,5\*</sup>

## Abstract

**Background:** Mitochondrial (mt) markers are successfully applied in evolutionary biology and systematics because mt genomes often evolve faster than the nuclear genomes. In addition, they allow robust phylogenetic analysis based on conserved proteins of the oxidative phosphorylation system. In the present study we sequenced and annotated the complete mt genome of *P. subalpina*, a member of the *Phialocephala fortinii* s.l. - *Acephala applanata* species complex (PAC). PAC belongs to the Helotiales, which is one of the most diverse groups of ascomycetes including more than 2,000 species. The gene order was compared to deduce the mt genome evolution in the Pezizomycotina. Genetic variation in coding and intergenic regions of the mtDNA was studied for PAC to assess the usefulness of mt DNA for species diagnosis.

**Results:** The mt genome of *P. subalpina* is 43,742 bp long and codes for 14 mt genes associated with the oxidative phosphorylation. In addition, a GLY-YIG endonuclease, the ribosomal protein S3 (*Rps3*) and a putative N-acetyl-transferase were recognized. A complete set of tRNA genes as well as the large and small rRNA genes but no introns were found. All protein-coding genes were confirmed by EST sequences. The gene order in *P. subalpina* deviated from the gene order in *Sclerotinia sclerotiorum*, the only other helotialean species with a fully sequenced and annotated mt genome. Gene order analysis within Pezizomycotina suggests that the evolution of gene orders is mostly driven by transpositions. Furthermore, sequence diversity in coding and non-coding mtDNA regions in seven additional PAC species was pronounced and allowed for unequivocal species diagnosis in PAC.

**Conclusions:** The combination of non-interrupted ORFs and EST sequences resulted in a high quality annotation of the mt genome of *P. subalpina*, which can be used as a reference for the annotation of other mt genomes in the Helotiales. In addition, our analyses show that mtDNA loci will be the marker of choice for future analysis of PAC communities.

## Background

*Phialocephala fortinii* s.l., an anamorphic ascomycete [1,2] belonging to the Helotiales [2,3], has been identified as an ubiquitous colonizer of woody plant roots colonizing up to 90% of the roots of woody plant species [4]. The geographical distribution of PAC species ranges from polar regions [5], over temperate regions [6], to subtropical regions [7]. *Phialocephala fortinii* s.l. was shown to be composed of at least 21 reproductively

isolated lineages, eight of which were formally described [4,8]. In addition, a closely related but sterile species also colonizing roots of woody plant species endophytically was described as *Acephala applanata* [9]. These species are also known as *Phialocephala fortinii* s.l. - *Acephala applanata* species complex (PAC). PAC species form communities of up to 10 sympatrically occurring species and communities were shown to remain stable for several years [10-12]. No distance-decay relationship was observed among PAC communities collected across the Northern hemisphere and therefore the Baas-Becking hypothesis that “everything is everywhere” could not be rejected for this assemblage of species [4]. Although sequencing of the internal transcribed spacer (ITS) regions

\* Correspondence: christoph.gruenig@microsynth.ch

<sup>1</sup>Forest Pathology and Dendrology Institute of Integrative Biology (IBZ), ETH Zurich, CH-8092, Zurich, Switzerland

<sup>5</sup>Microsynth AG, Schützenstrasse 15CH-9436, Balgach, Switzerland  
Full list of author information is available at the end of the article

of the rDNA is often regarded as a 'gold standard' in species diagnosis in fungi [13], the resolution of ITS sequences was not sufficient to differentiate species in this complex [10]. Instead, several classes of molecular markers were developed for PAC species assignment including PCR fingerprinting, single-copy restriction fragment length polymorphisms (RFLP), multilocus sequence typing, and microsatellites. Although each of these molecular markers supported the delineation of multiple species in this complex, with concordant cryptic species defined by all markers [14,15], the application of these markers is laborious. In addition, introgression or incomplete lineage sorting further complicates species diagnosis in this species complex [14]. A single, short sequence that allows unequivocally diagnosing PAC species, and if possible other closely related taxa, is still missing.

Mitochondrial (mt) markers were successfully applied in evolutionary biology and systematics [16-18] because mt genomes often evolve faster than the nuclear genomes especially in intergenic regions [19,20]. The mt genomes of filamentous ascomycetes range between 24 to over 100 kb and have a circular topology. They usually contain 14 mt genes encoding proteins of the oxidative phosphorylation system (OXPHOS), the large (*rnl*) and small (*rns*) ribosomal subunits, and a varying set of tRNAs genes [21,22]. In addition, a varying number group I and group II introns specific to fungal mt genomes often including GIY-YIG or LAGLIDAGD endonucleases were reported [23-26] and several open reading frames with unknown functions were described [20,23,27]. In Pezizomycotina, completely sequenced and annotated mt genomes are available for members of the Eurotiomycetes and Sordariomycetes but only partial non-annotated genomes or draft annotations are available for helotialean species. The Helotiales is one of the most diverse fungal orders and is comprised of more than 350 genera including over 2,000 described species including many important plant pathogens [28].

In the course of a genome sequencing project of *P. subalpina* a draft sequence of the mt genome became available. We used this draft sequence and re-sequenced the complete mt genome of *P. subalpina*. Specifically we aimed to: (i) present a completely sequenced and annotated mt genome for the helotialean branch of the fungal tree of life, (ii) compare gene orders of *P. subalpina* with those found in other filamentous ascomycetes, (iii) compare the evolution of mt and nuclear genomes in PAC species and, (v) test mt loci as a tool for species diagnosis in PAC.

## Results

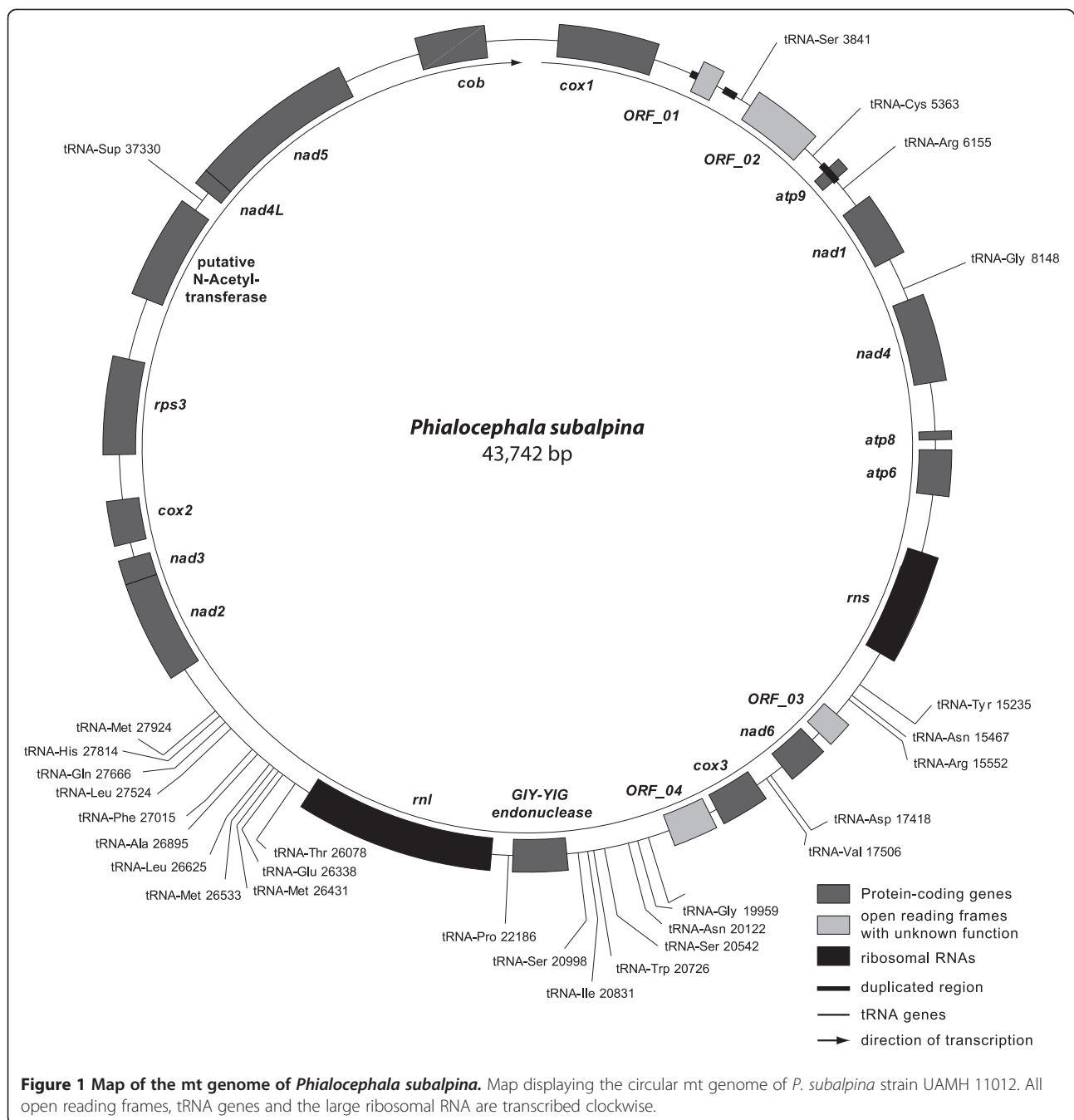
### Genome content and genome organization

The circular mt genome of *P. subalpina* strain UAMH 11012 is 43,742 bp long [GenBank: JN031566] with an AT-content of 72% and contains 21 open reading frames, 14 of which code for OXPHOS proteins (*atp6*, *atp8*, *atp9*, *cox1-3*, *cob*, *nad1-6*, *nad4L*; Figure 1). All 21 protein-coding ORFs are transcribed in the same direction and start with the canonical translation initiation codon ATG except *cox1* (TTG) and *cox3* (GTG). The preferred stop codon was TAA with the exception of *nad3* and *nad5* (both TAG). Beside the 14 OXPHOS genes, the ribosomal protein S3 (*Rps3*) and a GIY-YIG endonuclease were recognized. In addition, a putative N-acetyltransferase with an Acetyltransf\_1 domain at the C-terminus was predicted (Pfam Nr: PF00583, amino acid positions 361-526, E-value: 1.8E-23). BLASTP searches returned several hits for Acetylase\_1 containing proteins in other ascomycetes. However, all of these proteins were located in the nuclear genome. Similarly, TBLASTN searches of the putative mt N-acetyl-transferase against a draft genome sequence of *P. subalpina* recognized two additional N-acetyl-transferases for *P. subalpina* but both nuclear proteins were substantially smaller (198 and 202 aa) than the predicted mt protein (579 aa). The functions of the remaining four ORFs are unknown because neither significant BLASTP hits nor conserved domains in INTERPROSCAN searches were found. In addition, the large and small ribosomal RNA subunits (*rns* and *rnl*) were present in the mt genome. A number of 5,903 Roche/454 GS FLX (454) EST sequencing reads (total number of aligned bases: 1.89 Mbp) mapped to the mt genome. Reads almost exclusively mapped to coding regions of the mt genome (proteins and rRNA genes) and all ORFs except *ORF\_03* were partially or fully covered by ESTs. However, sequence coverage differed considerably among genes (see Additional file 1).

In total, 27 tRNA genes coding for all amino acids were predicted in the mt genome. Both software tools applied resulted in the same tRNA predictions except *tRNA-Cys* at position 5,363, which was only predicted by RNAWEASEL and *tRNA-Asn* at position 20,122 that was exclusively predicted by TRNASCAN-SE. A putative Ochre suppressor tRNA gene (antisense codon: UUA) was predicted by TRNASCAN-SE. Protein-coding genes covered 48.1% of the mt genome, while 4.7% and 11.8% correspond to tRNA genes and rRNA genes, respectively (total coding regions: 64.6%).

### Duplication of a region including the *atp9* open reading frame in PAC

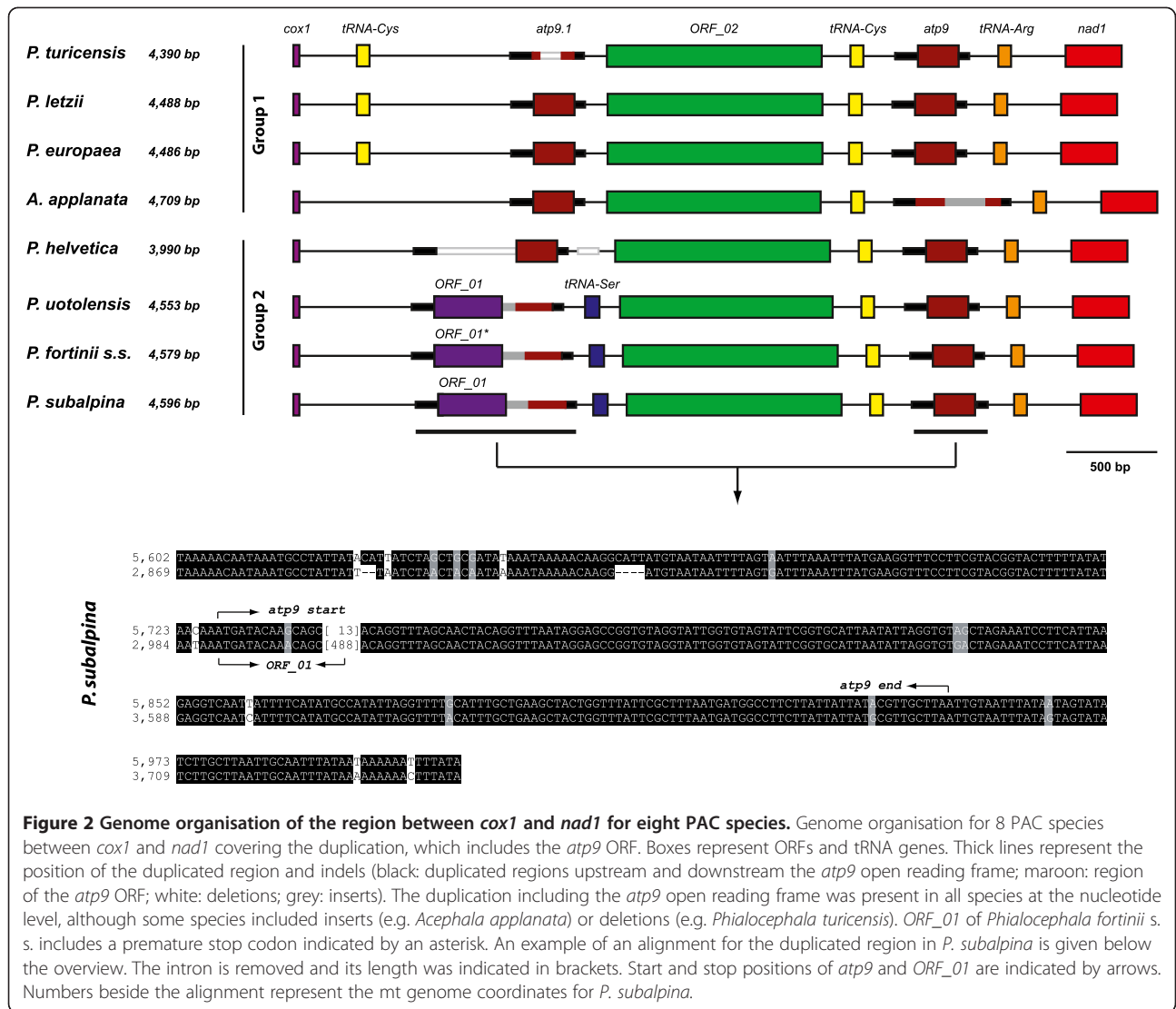
A duplication of an mtDNA region including the *atp9* open reading frame was observed in *P. subalpina* (Figure 1). Beside the *atp9* ORF (225 bp), the duplication



included 124 bp upstream of the start codon and 37 bp downstream of the stop codon of the *atp9* ORF (total length of duplication: 386 bp). The duplication was interrupted by a 488 bp insertion (Figures 1 and 2). The putative *ORF\_01* (123 aa) shared the first 14 bp of the duplicated *atp9* ORF but the remaining 358 bp of *ORF\_01* including the stop codon lie in the 488 bp insertion interrupting the duplication (Figure 2, bottom).

Analysis of the *cox1-nad1* region for seven additional PAC strains (Table 1) showed that the synteny between

*ORF\_02* and *nad1* was conserved among all PAC species and sequence identity was > 90%. In contrast, it was not possible to derive significant alignments based on nucleotide data for all 8 species between *cox1* and *ORF\_02*. Two groups were recognized that produced significant alignments over the entire *cox1-nad1* sequences (Figure 2). Whereas the first group is comprised of *P. turicensis*, *P. letzii*, *P. europaea* and *A. appianata*, the second group included *P. helvetica*, *P. uotolensis*, *P. subalpina* and *P. fortinii* s.s. The differences between *cox1*



**Table 1** PAC strains included to study the duplication of the *atp9* region and the conservation of putative ORFs

Taxon	Strain	Culture collection number <sup>1</sup>	Host	Geographic origin	GenBank accession numbers	
					<i>cox1 - nad1</i> <sup>3</sup>	<i>ORF_03</i> <sup>3</sup>
<i>Phialocephala turicensis</i>	1_124_1	CBS 119234	<i>Picea abies</i>	Zürichberg; Switzerland	[GenBank:JN091443]	[GenBank:JN091488]
<i>Phialocephala letzii</i>	2_120_3	CBS 119266	<i>P. abies</i>	Zürichberg; Switzerland	[GenBank:JN091444]	[GenBank:JN091489]
<i>Phialocephala europaea</i>	3_117_2	CBS 119269	<i>P. abies</i>	Zürichberg; Switzerland	[GenBank:JN091445]	[GenBank:JN091490]
<i>Phialocephala helvetica</i>	4_123_4	CBS 119272	<i>P. abies</i>	Zürichberg; Switzerland	[GenBank:JN091446]	[GenBank:JN091491]
<i>Phialocephala uotolensis</i>	5_134_3		<i>P. abies</i>	Zürichberg; Switzerland	[GenBank:JN091447]	[GenBank:JN091492]
<i>Phialocephala subalpina</i>	6_70_1	UAMH 11012	<i>P. abies</i>	Bödmeren; Switzerland	[GenBank:JN031566]	[GenBank:JN031566]
<i>Phialocephala fortinii</i> s.s.	7_6_7v		<i>Vaccinium myrtillus</i>	Bödmeren; Switzerland	[GenBank:JN091448]	[GenBank:JN091493]
<i>Acephala applanata</i>	T1_50_2		<i>P. abies</i>	Bödmeren; Switzerland	[GenBank:JN091449]	[GenBank:JN091494]

Strains of cryptic species of *Phialocephala fortinii* s.l. and *Acephala applanata* included to study the duplication of the *atp9* region and the conservation of putative ORFs

<sup>1</sup>CBS, Centralbureau voor Schimmelcultures, Utrecht, The Netherlands; UAMH, University of Alberta, Microfungus Collection and Herbarium, Alberta, Canada

and *ORF\_02* for the two groups are also reflected by the annotation of different gene features between these two groups. Species in group 1 possess an additional *tRNA-Cys* between *cox1* and *ORF\_02* except for *A. applanata* and no insert was observed in the duplicated region including the *atp9* ORF. The *tRNA-Cys* was not recognized by RNAWEASEL in *A. applanata* due to the accumulation of mutations in this particular region compared to the other species of group 1. In contrast, members of group 2 possess a *tRNA-Ser* between *ORF\_01* and *ORF\_02*, which was, however, not present in *P. helvetica* due to a 118 bp deletion (Figure 2). In addition, *P. helvetica* deviated from other group 2 species by the absence of the 488 bp insertion leading to the annotation of *ORF\_01*. Genome organisation between *cox1* and *nad1* reflected the known phylogenetic relatedness of PAC species with the exception of *P. uotolensis*. Strain 5\_134\_3 of *P. uotolensis*, which is closely related to *P. turicensis* based on sequences of several nuclear loci, single-copy RFLP analysis and microsatellite data [14,15], showed a similar genome organization as *P. fortinii* s.s. and *P. subalpina*.

The presence of a duplication of the region including the *atp9* ORF could be confirmed for all eight genomes at the nucleotide level (Figure 2). Three species had two non-interrupted ORFs for the *atp9* gene (*P. letzii*, *P. europaea*, *P. helvetica*) with identical protein sequences for *P. letzii* and *P. europaea*. The two *P. helvetica* *atp9* protein sequences deviate at two of the 74 aa positions between the two *atp9* ORFs. All other species have either an insertion leading to *ORF\_01* (*P. uotolensis*, *P. fortinii* s.s., *P. subalpina*) or a deletion (*P. turicensis*) in one of the *atp9* ORFs (Figure 2). Similarly, *A. applanata* possessed an insertion of 234 bp in one of the *atp9* ORFs (Figure 2). The insert shows neither direct nor inverted repeats and did not show any similarities with known nucleotide or protein sequences using BLASTN and BLASTX searches.

#### Conservation of putative ORFs in PAC species

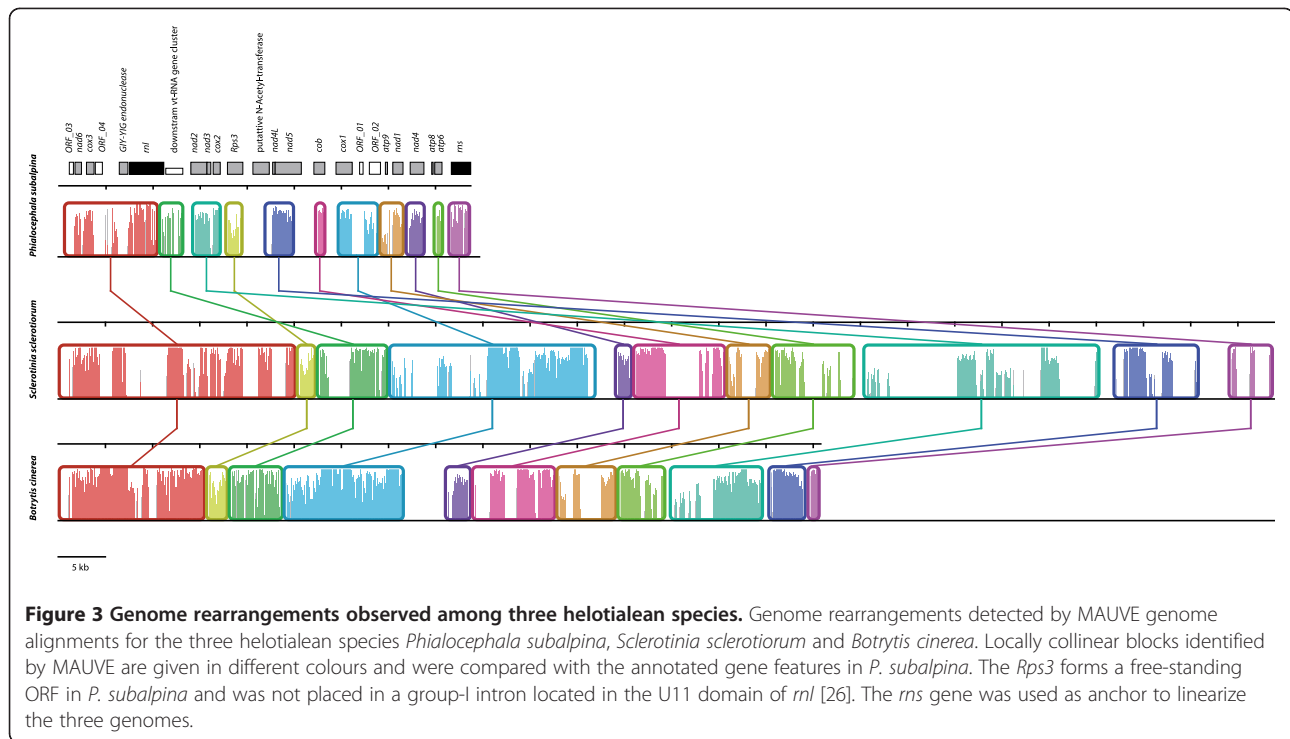
In order to collect further evidence that putative ORFs code for proteins, the conservation of these ORFs was investigated in seven additional PAC species. Unfortunately, repeated attempts to amplify the region of *ORF\_04* failed. In contrast, we could assess the presence and conservation of the other 3 putative ORFs observed in *P. subalpina* in the additional PAC species. *ORF\_02* was observed in all eight PAC species. Despite SNPs and indels, none of the indels resulted in frameshift mutations and no premature stop codons were present (see Additional file 2). In contrast, *ORF\_03* was either missing completely, contained stop codons, or the start codon was missing in five of the eight species. Similarly,

*ORF\_01* was only present in three of the eight species and *P. fortinii* s.s. had a premature stop codon (Figure 2).

#### Evolution of gene orders in the Helotiales and Pezizomycotina

Anchored genome alignments for the three helotialean species *P. subalpina*, *S. sclerotiorum* and *B. cinerea* show pronounced genome rearrangements between *P. subalpina* and the closely related species *S. sclerotiorum* and *B. cinerea* (Figure 3). In contrast, complete synteny in gene order were evident between *S. sclerotiorum* and *B. cinerea*. Phylogenetic analysis based on 12 OXPHOS protein sequences (*atp6*, *cox1-3*, *cob*, *nad1-6*, *nad4L*) allowed for the identification of the four classes of filamentous ascomycetes (Figure 4, Table 2). Although the ML tree shows that the Dothideomycetes and Leotiomyces share a most recent common ancestor with the Eurotiomyces, the BS support value (53%) and bayesian PP value (0.55) for this placement are low. Therefore, alternative hypotheses such as Dothideomycetes and Leotiomyces sharing a most recent common ancestor with the Sordariomyces cannot be ruled out.

Based on this phylogeny, we have reconstructed putative ancestral gene orders and rearrangements leading to the contemporary gene orders of 14 OXPHOS proteins (*atp6*, *atp8*, *atp9*, *cox1-3*, *cob*, *nad1-6*, *nad4L*), *Rps3*, and rRNAs by using CREX and TREEREX analysis (Figures 4A, B; see Additional file 3 for full input gene orders). Identical ancestral gene arrangements were observed in TREEREX analysis irrespective whether the Leotiomyces and Dothideomycetes share the most recent common ancestor with the Sordariomyces or the Eurotiomyces (data not shown). The evolution of gene orders among species belonging to the Pezizomycotina was mainly characterized by transpositions (Figures 4A, C). In contrast, inversions and inverse-transpositions have not been found in the analysed gene orders, which excluded the two Dothideomycete species. However, the Dothideomycetes have genes that are in opposite orientation with respect to the remaining Pezizomycotina species. Moreover, both species were separated from all other Pezizomycotina species and by themselves by very long evolutionary scenarios rendering the reconstruction unreliable (Figure 4A). In our analysis, only one tandem-duplication-random-loss (trdl) event was suggested by CREX analysis involving *cob* and *cox1* to derive the gene order of *S. sclerotiorum* (Rearrangement 11 in Figure 4). BLASTX searches of *cob* and *cox1* protein sequences against the mtDNA of *S. sclerotiorum* confirmed that a duplication-based rearrangement mechanism was involved because a partial *cob* fragment in front of *cox1* was found as expected for the predicted operation (30 aa, E-value: 3.00E-09). Together with the duplication of *atp9* for PAC species (see above) this indicates that



duplication-based rearrangement are involved in mitogenome evolution of Pezizomycotina. The number of necessary events required to convert one gene order to the other was not always related to the phylogenetic distance between species. For example, gene orders of *Podospira anserina* and *S. sclerotiorum* could only be derived from gene orders of their closest relatives by evolutionary scenarios that include multiple transpositions and in the case of *S. sclerotiorum* a *tdrl* event.

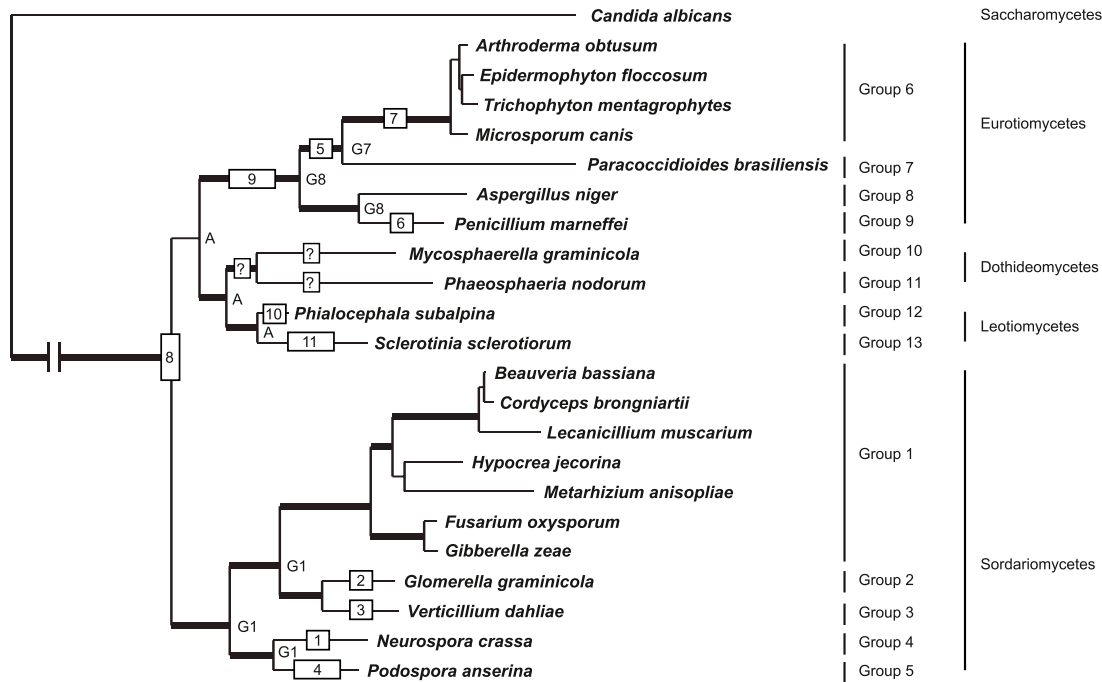
Based on the used species and gene sampling our analysis indicates that i) the group of *Beauveria bassiana* (Group 1 in Figure 4) represent the ancestral gene order for the Sordariomycetes, i.e., no gene rearrangements are necessary to reach the node in the phylogenetic tree representing the Sordariomycetes. Similarly, *Aspergillus niger* (Group 8 in Figure 4) represents the ancestral gene order for the Eurotiomycetes. Furthermore, comparisons among the possible intermediate gene orders of the Sordariomycetes, Eurotiomycetes, and the reconstructed ancestral gene order of the Leotiomyces indicates the intermediate position of the later (Additional file 4).

#### Evolution of mtDNA in PAC and searching regions for species diagnosis

A total of 7,350 bp (16.8% of the mt genome) from four regions of the mt genome were amplified in four additional PAC species to screen for polymorphisms (Table 3). Fragments included coding (*cox1*, *rnl*) and intergenic regions (*Rps3*-putative N-acetyl-transferase,

*atp9-nad1-nad4*). High amounts of DNA polymorphisms were observed within coding and intergenic regions among PAC species (Additional file 5). However, DNA polymorphisms were not always evenly distributed among species within the sequenced DNA fragments. Whereas in three cases all five species contributed to a similar extent to the observed polymorphic regions (e.g. *rnl*), *P. europaea* was almost exclusively responsible for a peak in diversity observed in *cox1* (data not shown). In addition, a 520 bp indel in the non-coding region spanning *Rps3* and the putative N-acetyl-transferase showed a very high nucleotide diversity among the three species with this insert (*P. europaea*, *P. fortinii* s.s., *A. applanata*) (Additional File 5). Based on these results three regions were selected and tested on a broader selection of strains. Parts of *rnl* (~730 bp), a fragment located between *Rps3* and the putative N-acetyl-transferase (~850 bp), and a fragment including parts of *nad1* and *nad4* (~1,650 bp) were sequenced from 32 strains belonging to eight PAC species (Table 3). Best-fitting mutation models selected from jModeltest were F81 + I, TVM + G, TrN + G, and TPM3uf + I + G for the three individual loci and the concatenated dataset, respectively. Variation in the three fragments was considerable among and within species. Often single strains of a species were responsible for this high variation found within species (Figure 5). For example, strains 7\_45\_5, or T1\_K92\_131 were separated from the other strains of the respective species for all three loci resulting in 19 and 21

**A) Mapping of rearrangement scenarios**



**B) reconstructed ancestral gene orders for Sordariomycetes, Leotiomycetes and Eurotiomycetes**

G8: rnl rps3 cox1 atp9 nad3 cox2 nad4L nad5 nad2 cob nad1 nad4 atp8 atp6 rns nad6 cox3  
 A: rnl rps3 nad2 nad3 cox2 nad4L nad5 cob cox1 atp9 nad1 nad4 atp8 atp6 rns nad6 cox3  
 G1: rnl rps3 nad2 nad3 atp9 cox2 nad4L nad5 cob cox1 nad1 nad4 atp8 atp6 rns cox3 nad6

**C) Details on rearrangements**

Sordariomycetes		Eurotiomycetes		
1	trp nad4L nad5 cob cox1 nad1 nad4 atp8 atp6 atp9 cox2 atp9 cox2 nad4L nad5 cob cox1 nad1 nad4 atp8 atp6	5	trp nad3 cox2 nad4L nad5 nad2 cob cox2 nad4L nad5 nad2 cob nad3	
2	trp cox1 nad1 nad4 nad4 cox1 nad1	6	trp atp9 nad3 cox2 nad4L nad5 nad2 nad3 cox2 nad4L nad5 nad2 atp9	
3	trp atp9 cox2 nad4L nad5 cob cox1 nad1 nad4 atp8 atp6 rns cox3 nad6 nad1 nad4 atp8 atp6 rns cox3 nad6 atp9 cox2 nad4L nad5 cob cox1	7	trp atp8 atp6 rns nad6 cox3 atp6 rns nad6 cox3 atp8	
4	5 transpositions + loss of atp9	8	trp atp9 cox2 nad4L nad5 cob cox1 cox2 nad4L nad5 cob cox1 atp9	
Leotiomycetes		trp cox3 nad6 nad6 cox3	9	trp nad2 nad3 cox2 nad4L nad5 nad3 cox2 nad4L nad5 nad2
10	trp rps3 nad2 nad3 cox2 nad2 nad3 cox2 rps3	trp nad3 cox2 nad4L nad5 nad2 cob cox1 atp9 cox1 atp9 nad3 cox2 nad4L nad5 nad2 cob		
11	trp nad2 nad3 cox2 nad4L nad5 cob cox1 atp9 nad1 nad4 atp8 atp6 cob cox1 atp9 nad1 nad4 atp8 nad2 nad3 cox2 nad4L nad5			
tdrl	cob cox1 atp9 nad1 nad4 cox1 nad4 cob atp9 nad1			

**Figure 4 Evolution of gene orders in Pezizomycotina.** A: Single ML tree (log likelihood: -50,671.86) constructed from 12 OXPPOS proteins for selected ascomycetes with complete mt genomes (see Table 2). The tree was used to map gene order rearrangements of 14 OXPPOS proteins, *Rps3*, and the rRNAs. Thick branches indicate bootstrap support values  $\geq 90\%$  in ML analysis and posterior probabilities  $\geq 0.95$  in BI. *Candida albicans* served as outgroup. Group numbering given on the right indicates groups of species with identical gene orders for the gene set analyzed. Ancestral gene orders are indicated next to the nodes as G followed by the group index if the gene order is identical to the gene order of a given group or as A for the gene order reconstructed by TREEREX (see B), except for the root node. Boxes on the branches indicate mapped rearrangements as analysed by CREX and TREEREX. Numbers in boxes refer to the rearrangement given in C. B: Reconstructed ancestral gene orders for the Eurotiomycetes, Sordariomycetes and the Leotiomycetes. C: Evolutionary scenarios to deduce one gene order of the other for each change indicated in Figure 4A are given (trp, transpositions; tdrl, tandem-duplication-random-loss). Only the mt regions included in the operation are indicated in the Figure.

**Table 2 Ascomycetous species included in gene order analysis**

Species	Class	Order	Length	Accession Nr
<i>Aspergillus niger</i>	Eurotiomycetes	Eurotiales	31,103	[GenBank:NC_007445]
<i>Penicillium marneffeii</i>	Eurotiomycetes	Eurotiales	35,438	[GenBank:NC_005256]
<i>Arthroderma obtusum</i>	Eurotiomycetes	Onygenales	24,105	[GenBank:NC_012830]
<i>Epidermophyton floccosum</i>	Eurotiomycetes	Onygenales	30,910	[GenBank:NC_007394]
<i>Microsporium canis</i>	Eurotiomycetes	Onygenales	23,943	[GenBank:NC_012832]
<i>Paracoccidioides brasiliensis</i>	Eurotiomycetes	Onygenales	71,335	[GenBank:NC_007935]
<i>Trichophyton mentagrophytes</i>	Eurotiomycetes	Onygenales	24,297	[GenBank:NC_012826]
<i>Mycosphaerella graminicola</i>	Dothideomycetes	Capnodiales	43,964	[GenBank:NC_010222]
<i>Phaeosphaeria nodorum</i>	Dothideomycetes	Pleosporales	49,761	[GenBank:EU053989]
<i>Botrytis cinerea</i>	Leotiomycetes	Helotiales	80,799	[GenBank:NW_001814287] <sup>1</sup>
<i>Phialocephala subalpina</i>	Leotiomycetes	Helotiales	43,742	[GenBank:JN031566]
<i>Sclerotinia sclerotiorum</i>	Leotiomycetes	Helotiales	128,852	draft <sup>2</sup>
<i>Beauveria bassiana</i>	Sordariomycetes	Hypocreales	29,961	[GenBank:NC_010652]
<i>Cordyceps brongniartii</i>	Sordariomycetes	Hypocreales	33,926	[GenBank:NC_011194]
<i>Fusarium oxysporum</i>	Sordariomycetes	Hypocreales	34,477	[GenBank:AY945289]
<i>Gibberella zeae</i>	Sordariomycetes	Hypocreales	95,676	[GenBank:NC_009493]
<i>Hypocrea jecorina</i>	Sordariomycetes	Hypocreales	42,130	[GenBank:NC_003388]
<i>Lecanicillium muscarium</i>	Sordariomycetes	Hypocreales	24,499	[GenBank:NC_004514]
<i>Metarhizium anisopliae</i>	Sordariomycetes	Hypocreales	24,673	[GenBank:NC_008068]
<i>Glomerella graminicola</i>	Sordariomycetes	n.a.	39,649	[GenBank:CM001021]
<i>Verticillium dahliae</i>	Sordariomycetes	Phyllachorales	27,184	[GenBank:NC_008248]
<i>Neurospora crassa</i>	Sordariomycetes	Sordariales	64,840	draft <sup>2</sup>
<i>Podospora anserina</i>	Sordariomycetes	Sordariales	94,192	[GenBank:NC_001329]
<i>Candida albicans</i>	Saccharomycetes		40,420	[GenBank:NC_002653]

<sup>1</sup>partial sequence (without annotation)

<sup>2</sup>sequence and annotation derived from <http://www.broadinstitute.org>

substitutions respectively, not considering indels. *P. turicensis* was the only species that was monomorphic for all three loci. ML and BI analysis using the concatenated dataset placed strains of each species in well-supported clades (Figure 7). In addition, the tree topology of each individual mtDNA locus and the concatenated mtDNA dataset did not deviate significantly from the topology of the concatenated sequences of four genomic regions sequenced previously [14] (Table 4). No evidence for recombination blocks among the three sequenced loci were found, although incompatible sites were regularly observed (data not shown). Incompatible sites were located within as well as between the three sequenced loci.

## Discussion

In the present study we sequenced and annotated the mt genome of a widely distributed group of root-inhabiting fungi belonging to the Helotiales (Leotiomycetes). Gene order analysis showed that the evolution of mt genomes in the Pezizomycotina is mainly driven by transpositions. Moreover, we show the usefulness of mtDNA loci for

species diagnosis in the *Phialocephala fortinii* s.l. – *Acephala applanata* species complex (PAC).

## Gene content and mt organisation in *P. subalpina*

The mt genome of filamentous ascomycetes normally code for 14 proteins of the oxidative phosphorylation system [22], including the sequences for the large (*rnl*) and small (*rns*) ribosomal subunits. In addition, a varying number of additional proteins with homologies to known proteins, i.e., the ribosomal protein S3 (*Rps3*) [23,24], and ORFs with unknown functions may be found [20,23,27]. The mt genome of *P. subalpina* follows this rule. All 14 OXPHOS proteins, the two rRNAs and a complete set of tRNA genes were present. Nevertheless, some unique features were observed. (i) A putative N-acetyl-transferase was predicted in the mt genome. To the best of our knowledge, this is the first report of a putative N-acetyl-transferase in the mt genome of ascomycetes. Acetyl-transferases modify proteins in eukaryotes, both co- and post-translationally by transferring acetyl groups from acetyl-coenzyme A to either the α-amino group of amino-terminal residues or to the ε-amino



**Table 3 PAC strains included to study the suitability of mtDNA markers for species diagnosis**

Taxon	Strain <sup>1</sup>	Culture collection number <sup>2</sup>	Host	Geographic origin	GenBank accession numbers			
					<i>cox1</i> <sup>3</sup>	<i>rnl</i>	<i>Rps3 - N-acetyl-transferase</i>	<i>atp9 - nad4</i>
<i>Phialocephala turicensis</i>	1_124_1	CBS 119234	<i>Picea abies</i>	Zürichberg; Switzerland	n.a.	[GenBank: JN091454]	[GenBank: JN091495]	[GenBank: JN091530]
	1_124_2		<i>P. abies</i>	Zürichberg; Switzerland	n.a.	[GenBank: JN091455]	[GenBank: JN091496]	[GenBank: JN091531]
	1_176_1*	CBS 119264	<i>P. abies</i>	Zürichberg; Switzerland	n.a.	[GenBank: JN091456]	[GenBank: JN091497]	[GenBank: JN091532]
	1_197_4	CBS 119265	<i>P. abies</i>	Zürichberg; Switzerland	n.a.	[GenBank: JN091457]	[GenBank: JN091498]	[GenBank: JN091533]
<i>Phialocephala letzii</i>	2_120_3	CBS 119266	<i>P. abies</i>	Zürichberg; Switzerland	n.a.	[GenBank: JN091458]	[GenBank: JN091499]	[GenBank: JN091534]
	2_126_3		<i>P. abies</i>	Zürichberg; Switzerland	n.a.	[GenBank: JN091459]	[GenBank: JN091500]	[GenBank: JN091535]
	2_146_1*	CBS 119268	<i>P. abies</i>	Zürichberg; Switzerland	n.a.	[GenBank: JN091460]	[GenBank: JN091501]	[GenBank: JN091536]
	2_152_2	CBS 119267	<i>P. abies</i>	Zürichberg; Switzerland	n.a.	[GenBank: JN091461]	[GenBank: JN091502]	[GenBank: JN091537]
<i>Phialocephala europaea</i>	3_117_2	CBS 119269	<i>P. abies</i>	Zürichberg; Switzerland	n.a.	[GenBank: JN091462]	[GenBank: JN091503]	[GenBank: JN091538]
	3_122_3	CBS 119270	<i>P. abies</i>	Zürichberg; Switzerland	[GenBank: JN091450]	[GenBank: JN091463]	[GenBank: JN091504]	[GenBank: JN091529]
	3_136_1		<i>P. abies</i>	Zürichberg; Switzerland	n.a.	[GenBank: JN091464]	[GenBank: JN091505]	[GenBank: JN091539]
	3_171_5*	CBS 119271	<i>P. abies</i>	Zürichberg; Switzerland	n.a.	[GenBank: JN091465]	[GenBank: JN091506]	[GenBank: JN091540]
<i>Phialocephala helvetica</i>	4_123_4	CBS 119272	<i>P. abies</i>	Zürichberg; Switzerland	n.a.	[GenBank: JN091466]	[GenBank: JN091507]	[GenBank: JN091541]
	4_136_4		<i>P. abies</i>	Zürichberg; Switzerland	n.a.	[GenBank: JN091467]	[GenBank: JN091508]	[GenBank: JN091542]
	4_138_5*	CBS 119273	<i>P. abies</i>	Zürichberg; Switzerland	n.a.	[GenBank: JN091468]	[GenBank: JN091509]	[GenBank: JN091543]
	4_145_2	CBS 119274	<i>P. abies</i>	Zürichberg; Switzerland	n.a.	[GenBank: JN091469]	[GenBank: JN091510]	[GenBank: JN091544]
	4_153_2		<i>P. abies</i>	Zürichberg; Switzerland	[GenBank: JN091451]	[GenBank: JN091470]	[GenBank: JN091511]	[GenBank: JN091545]
<i>Phialocephala uotiloensis</i>	5_134_3		<i>P. abies</i>	Zürichberg; Switzerland	n.a.	[GenBank: JN091471]	[GenBank: JN091512]	[GenBank: JN091546]
	5_220_1	CBS 119276	<i>P. abies</i>	Uetliberg; Switzerland	n.a.	[GenBank: JN091472]	[GenBank: JN091513]	[GenBank: JN091547]
	5_234_5	CBS 119277	<i>P. abies</i>	Uetliberg; Switzerland	n.a.	[GenBank: JN091473]	[GenBank: JN091514]	[GenBank: JN091548]
	5_264_1r*	CBS 119275	<i>P. abies</i>	Uetliberg; Switzerland	n.a.	[GenBank: JN091474]	[GenBank: JN091515]	[GenBank: JN091549]
<i>Phialocephala subalpina</i>	6_30_4	CBS 119279	<i>P. abies</i>	Bödmeren; Switzerland	n.a.	[GenBank: JN091475]	[GenBank: JN091516]	[GenBank: JN091550]
	6_35_6v	CBS 119278	<i>Vaccinium myrtillus</i>	Bödmeren; Switzerland	n.a.	[GenBank: JN091476]	[GenBank: JN091517]	[GenBank: JN091551]
	6_70_1	UAMH 11012	<i>P. abies</i>	Bödmeren; Switzerland	[GenBank: JN031566]	[GenBank: JN031566]	[GenBank: JN031566]	[GenBank: JN031566]
	6_78_2*	CBS 119280	<i>P. abies</i>	Bödmeren; Switzerland	n.a.	[GenBank: JN091477]	[GenBank: JN091518]	[GenBank: JN091553]
<i>Phialocephala fortinii</i> s.s.	7_6_7v		<i>V. myrtillus</i>	Bödmeren; Switzerland	[GenBank: JN091452]	[GenBank: JN091480]	[GenBank: JN091519]	[GenBank: JN091554]
	7_45_5	CBS 119281	<i>P. abies</i>		n.a.		[GenBank: JN091520]	

**Table 3 PAC strains included to study the suitability of mtDNA markers for species diagnosis (Continued)**

				Bödmeren; Switzerland		[GenBank: JN091478]		[GenBank: JN091555]
	7_62_7v	CBS 119282	<i>V.myrtillus</i>	Bödmeren; Switzerland	n.a.	[GenBank: JN091479]	[GenBank:JN091521]	[GenBank: JN091556]
	7_K92_049	CBS 114608	<i>P. abies</i>	Odenwald; Germany	n.a.	[GenBank: JN091481]	[GenBank:JN091522]	[GenBank: JN091557]
	7_K93_444*	CBS 443.86	<i>P. sylvestris</i>	Suonenjoki; Finland	n.a.	[GenBank: JN091482]	[GenBank:JN091523]	[GenBank: JN091558]
<i>Acephala applanata</i>	T1_50_2		<i>P. abies</i>	Bödmeren; Switzerland	n.a.	[GenBank: JN091483]	[GenBank:JN091524]	[GenBank: JN091559]
	T1_51_3		<i>P. abies</i>	Bödmeren; Switzerland	n.a.	[GenBank: JN091484]	[GenBank:JN091525]	[GenBank: JN091560]
	T1_K92_113*	CBS 109321	<i>P. abies</i>	Bödmeren; Switzerland	n.a.	[GenBank: JN091485]	[GenBank:JN091526]	[GenBank: JN091561]
	T1_K92_131	CBS 109322	<i>P. abies</i>	Bödmeren; Switzerland	[GenBank: JN091453]	[GenBank: JN091486]	[GenBank:JN091527]	[GenBank: JN091562]

Strains of cryptic species of *Phialocephala fortinii* s.l. and *Acephala applanata* included to study the suitability of mtDNA markers for species diagnosis

<sup>1</sup>type strains are marked by an asterisk

<sup>2</sup>CBS, Centraalbureau voor Schimmelcultures, Utrecht, The Netherlands; UAMH, University of Alberta, Microfungus Collection and Herbarium, Alberta, Canada

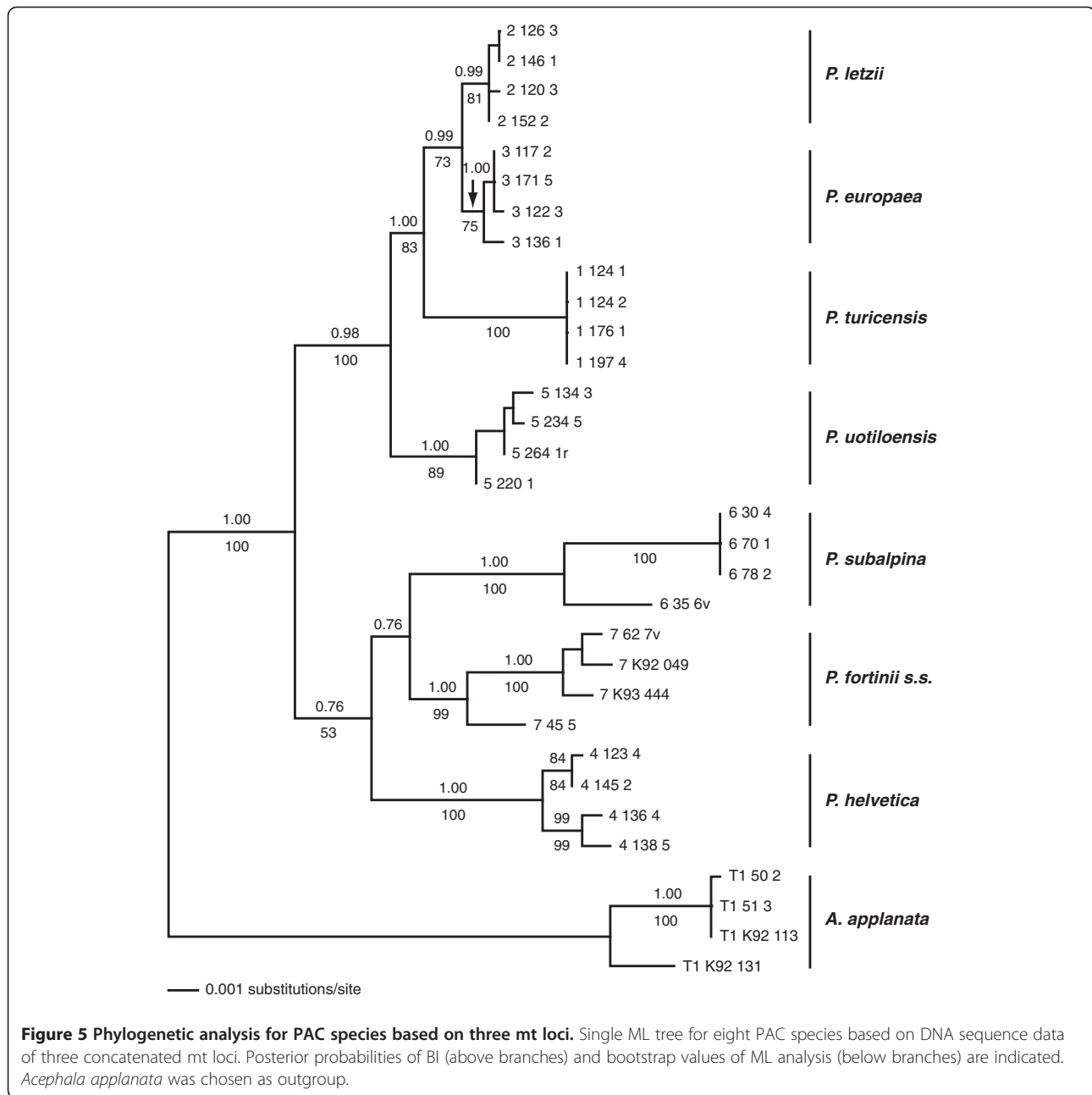
<sup>3</sup>sequences are only available for strains included in the screening to detect mtDNA polymorphisms

group of lysine residues at various positions [30]. In addition, N-acetyl-transferases were shown to modify several ribosomal proteins in *Escherichia coli* [31,32]. Although it seems likely that the putative mt N-acetyl-transferase is involved in protein modifications, the exact function is unknown because N-acetyl-transferases can act on different groups of substrates [30]. (ii) The ribosomal protein S3 (*Rps3*) formed a free-standing ORF in *P. subalpina* (Figure 1). To the best of our knowledge this is the second report of a free-standing *Rps3* gene in the Pezizomycotina. In all completely sequenced mt genomes of filamentous ascomycetes possessing *Rps3*, this gene is placed in a group-I intron located in the U11 domain of the *rnl* except for *Phaeosphaeria nodorum* [23,24,26,33]. Whereas the *Rps3* of *P. nodorum* is large (771 aa) and includes parts of *cox1* [34], *Rps3* found in *P. subalpina* is similar in length as *Rps3* found in *S. sclerotiorum* and other ascomycetes. In addition, BLASTP searches revealed no segments of other mt proteins. *Rps3* followed *cox2* in both species and sequencing of additional mt genomes in the Dothideomycetes and Leotiomycetes will show whether *cox2-Rps3* synteny may be another common position of *Rps3* in mt genomes. (iii) An Ochre suppressor tRNA gene was predicted. Suppressor tRNAs were found in the genomes of many species and allow the read-through of stop codons [35-37]. They provide a regulatory mechanism of gene expression allowing the production of several proteins from a single gene and were shown to be especially important for RNA viruses [38]. Moreover, suppressor tRNAs are hypothesized to play a role for the transcription of cryptic mitochondrial gene on the antisense strand [39,40]. (iv) A duplication of a genomic region including the *atp9* open reading frame interrupted by a 488 bp insert

was observed in *P. subalpina*, leading to the annotation of *ORF\_01*. Re-sequencing of the *cox1-ORF\_01-ORF\_02-atp9-nad1* region for additional seven PAC species confirmed that three species have two intact ORFs coding for *atp9*. In all other species one of the two *atp9* ORFs was interrupted by indels indicating that the duplication of the *atp9* region followed by successive modifications predated the separation of PAC species. Interestingly, two types of sequences with no obvious similarity were found between *cox1* and the duplicated *atp9* regions for PAC species, which was reflected in the annotated gene features and was in accordance with the relatedness of the species. An exception was *P. uotolensis* strain 5\_134\_3, which showed a similar sequence and organisation as *P. subalpina* and *P. fortinii* s.s. In previous studies we showed for this strain that it might be the result of a hybridization event with *P. subalpina*. For example the same strain clustered with a *P. subalpina* strain for the sequence of the translation elongation factor 1- $\alpha$  [14] but three other nuclear loci, microsatellite analysis and single-copy RFLP analysis placed this strain with other strains of *P. uotolensis* [8,14,15].

#### Transcription of ORFs in the mt genome

Identification of mtDNA genes is no guarantee that they are also active, as was e.g. shown for a silent copy of the *cox2* gene in the soybean mitochondrion [19,41]. Mapping of 454 EST sequence reads showed that they were mostly restricted to ORFs and rDNA genes. All ORFs except *ORF\_03* were confirmed by ESTs. However, pronounced differences in the sequence coverage were observed. Several factors could explain the differences observed in the transcription profile of coding regions. Either the 454 sequencing protocol introduced non-



uniform coverage in the normalized cDNA library [42] or the differences in the coverage reflect some differences in the expression of mt genes. Indeed, transcription of mt genes in the ascomycete *Saccharomyces cerevisiae* was shown to be far from uniform [43]. Future RT-qPCR assays for *P. subalpina* will show whether the observed differences in cDNA coverage reflect differences in expression profiles for mt proteins.

#### Do putative ORFs code for proteins?

Putative ORFs are regularly annotated in fungal genomes [20,23,27,44]. However, whether they really code for

proteins is rarely assessed. In the present study we used an indirect approach to gain additional evidence whether putative ORFs code for proteins. We assume that putative ORFs that code for a protein should (i) be transcribed, i.e., ESTs should match the respective regions and (ii) nucleotide sequences of the ORFs should be conserved among closely related species, in particular premature stop codons and frameshifts should not be detected. *ORF\_02* is an example of a transcribed and conserved ORF that most likely codes for a protein although BLASTP searches recognized no similar proteins in the NCBI database. In contrast, *ORF\_03* was either

**Table 4 Concordance in evolution among mtDNA and nucDNA for PAC**

Test <sup>1</sup>	Tree	Probability p			
		<i>mtl</i>	<i>Rps3</i> - putative N-acetyl-transferase	<i>nad1-nad4</i>	concatenated
WSH	4 nucDNA loci <sup>1</sup>	0.652	0.346	0.561	0.750
AU	4 nucDNA loci	0.125	0.095	0.370	0.499

Comparison of tree topologies for three mtDNA loci and four concatenated nuclear loci for eight species belonging to the *Phialocephala fortinii* s.l.-*Acephala applanata* species complex. Both, the approximately unbiased (AU) and the weighted Shimodaira and Hasegawa (WSH) tests were calculated<sup>1</sup> tree topologies were compared using the approximately unbiased (AU) and the weighted Shimodaira and Hasegawa (WSH) tests [29]

<sup>2</sup>The 4 nuclear loci included two non-coding loci (pPF-018, pPF-076) and partial sequences of two coding loci ( $\beta$ -tubulin, translation elongation factor 1- $\alpha$ ) as described in Grünig et al. [14]

completely deleted or included premature stop codons in four species and the insert responsible for *ORF\_01* was only present in three species and included a frame-shift mutation in one of these species. Therefore, we hypothesize that *ORF\_01* and *ORF\_03* do not code for proteins because they are not universally conserved despite their (partial) transcription (see Additional file 1). However, definitive evidence that conserved and transcribed ORFs code for proteins is only given when the corresponding proteins are isolated [19].

#### Evolution of gene orders in filamentous ascomycetes

Phylogenetic analysis based on protein data of 12 OXPPOS genes resulted in a robust phylogeny with the exception of the Dothideomycetes and Leotiomycetes which clustered together, but their position was not resolved and it remained unclear whether they share the most common ancestor with the Sordariomycetes or the Eurotiomycetes. Indeed, several deep phylogenetic analysis based on nuclear genes and/or rDNA loci placed the Leotiomycetes in a cluster with the Sordariomycetes [43,44]. To attribute for the uncertainty of the placement of Leotiomycetes, we analyzed the evolution of gene orders using both alternative hypotheses.

Gene orders were compared previously for some fungal orders [16,45,46] but no automated and formally well-defined approach was used to reconstruct the rearrangement history. CREX is based on the notion of common intervals, which reflect genes that appear consecutively in the input gene orders. In addition, we used TREEREX resulting in a detailed reconstruction of the rearrangement history and our analysis revealed that the evolution of gene orders in filamentous ascomycetes is mainly driven by transposition events and that gene orders are (mostly) conserved for close relatives. The conservation of gene orders in close relatives was also shown in previous studies. For example, the

transposition leading to the gene order of *Verticillium dahliae* (Rearrangement 3 in Figure 4) was confirmed in seven additional *Verticillium* species [16]. Similarly, 3 species closely related to *A. niger* (*Aspergillus tubingen-sis*, *Penicillium chrysogenum* and *Penicillium digitatum*) were recently shown to have the same gene order as *A. niger* for the set of genes used in our analysis [47].

Gene order analyses were shown to be useful to confirm phylogenetic analysis in several organismal groups [45-49] and in the present study we show, that the extent of gene rearrangements reflects the phylogenetic position of a species in most cases. For example, the ancestral gene order of the Leotiomycetes was most closely related to the two ancestral gene orders of the Sordariomycetes and Eurotiomycetes based on the parsimonious rearrangement scenarios reconstructed by CREX reflecting an intermediate position of the Leotiomycetes (see Additional File 4). This fits well with the results of the phylogenetic analysis showing that the Leotiomycetes could share the most recent common ancestor either with the Sordariomycetes or the Eurotiomycetes. However, two exceptions were observed. First, *P. anserina* deviated from *N. crassa* by several transpositions and the loss of the *atp9* gene. Similarly, the two Dothideomycete species deviated from themselves and all other Pezizomycotina by complex rearrangement scenarios. It was possible to reconstruct the possible ancestral gene order for the Sordariomycetes and the Eurotiomycetes although the presented results must be regarded as preliminary because of the limited species sampling in particular in the Leotiomycetes and the exclusion of the tRNAs due to restrictions of the software tools used. Since tRNAs are important for understanding the evolution of gene orders [49,50] the presented results need to be verified with a data set including the tRNAs.

#### Evolution of mtDNA in PAC species and suitability of mt markers for species diagnosis

The amount of variation found within PAC species was high, despite the fact that strains from most of the species were derived from a single study site (Table 3). Intra-species variability in the mt genome among species belonging to ascomycetes can vary greatly. Whereas mtDNA was highly diverse in many collections of filamentous ascomycetes [20,51,52], low levels of diversity were observed in *M. graminicola* for a world-wide collection of strains [27]. The high amount of variation in PAC species could be the result of genetic exchange among mt genomes. Although mt genomes were characterized by the absence of any genetic recombination in some studies [27] an increasing number of reports show recombination in mtDNA of plants and fungi [52-54]. Therefore, we searched for inconsistencies in our dataset

to find evidence for recombination events. Although inconsistencies were observed among parsimony informative sites for PAC species, the inconsistencies occurred within loci as well as between loci and no recombination blocks were evident, indicating that rather parallel mutations than recombination characterize the evolution of the mt genome in PAC species.

Mt loci were often used as diagnostic markers in systematics. They received particular attention during barcoding campaigns [55] and were also successfully applied for fungal species diagnosis [18,20,56]. In the present study it was possible to analyze the resolution of mtDNA markers at a fine taxonomic level using a well-defined species complex. Several marker types were used to characterize cryptic species in PAC such as single-copy RFLPs, microsatellite markers and sequence markers [14,15]. In the present study we show that two of the three examined mtDNA regions allow to distinguish all eight PAC species. Only one strain of *P. uotolensis* was misplaced using the sequence information of the partial *rnl* gene. The amount of variation found in three mt loci was high compared to nuclear loci sequenced previously [14]. For example, *P. letzii* and *P. europaea* have identical sequences for several nuclear coding and non-coding loci and were difficult to diagnose based on single-copy RFLP markers [14] but formed well supported monophyletic groups for all mt loci. So far, mating type idiomorphs were the only nuclear regions with a similar ability to distinguish PAC species [57]. However, a disadvantage of the mating type for species diagnosis is their heterothallic organisation in PAC species, which does not allow amplifying a single fragment for all strains. In this respect, mt markers developed in the present study offer advantages and mt loci can be regarded as useful diagnostic markers for PAC.

## Conclusions

The availability of the complete annotated mt genome and the knowledge about the intra- and inter-species diversity in PAC provides the basis for the development of new markers to study the community ecology, population biology and evolution in this species complex. In addition, it provides a reference for the annotation of other mt genomes in the Helotiales.

## Methods

### Sequencing the complete mt genome of *Phialocephala subalpina*

In the course of a genome sequencing project of *P. subalpina* strain UAMH 11012, an initial Roche/454 GS FLX (454) shotgun run was performed at the Functional Genomics Centre Zurich (FGCZ, Uni/ETH Zurich) and from that a draft of the circular mt genome of *P. subalpina* strain UAMH 11012 became available. The draft

sequence was subdivided into 12 fragments (see Additional file 6) and amplified from strain UAMH 11012 using long-range PCR in 20 µl volumes (Expand Long Range dNTPack kit, Roche, Rotkreuz, Switzerland). PCR conditions were optimized for 4 kb fragments with high AT contents by lowering the temperature during the elongation step from 68°C to 62°C and an initial elongation time of 4 min. PCR fragments were purified using the Wizard Plus SV kit (Promega, Wallisellen, Switzerland) and sequenced at Microsynth (Balgach, Switzerland).

### Annotation of the mt genome

Open reading frames (ORFs) in the mtDNA sequence of *P. subalpina* were searched with NCBI ORF FINDER [58]. BLASTP [59] and INTERPROSCAN [60] were used for homology-based function prediction of proteins. In addition, homologous regions of putative ORFs were sequenced for seven PAC species and sequences were analyzed for indels and SNPs resulting in frameshift mutations and/or pre-mature stop codons. The tRNA genes were predicted by TRNASCAN-SE V1.21 [61] and RNAWEASEL [62] searches using default settings for mt genomes. The ribosomal RNAs were determined by comparison with sequences from other fungi using BLASTN. Group I and group II introns were predicted using RNAWEASEL [62]. Duplications in the mt genome were searched using the software DOTTER [63].

### EST evidence for ORFs

Expression of ORFs was tested by searching for ESTs derived from a normalized EST library of strain UAMH 11012 sequenced on the 454 platform at FGCZ (Rémy Bruggmann, unpublished). Single 454 cDNA reads belonging to the mt genome were filtered using the software GENOMETHREADER [64] and the sequence coverage for each base in the mt genome was calculated (= number of reads covering a specific base in the genome).

### Analyzing the duplication of the *atp9* region in PAC species

A region between *cox1* and *nad1* included a duplication of the *atp9* region in *P. subalpina* (see results). In order to test the presence of the duplication in other PAC species, the region between *cox1* and *nad1* was sequenced from additional 7 PAC species (Table 1). The entire locus was amplified using primers mtPF\_F07\_F27774 (TAGAGGTAATCAAACCAATG) and PF\_cox1\_F (AGCCCACCAAAAACCTCATGC) using long-range PCR and sequenced as described above.

### Evolution of gene orders in Pezizomycotina

In a first step, mt genome alignments for the helotialean species *B. cinerea*, *S. sclerotiorum* and *P. subalpina* based on the publically available sequences were performed using the MAUVE 2.3.1 software [65] and locally collinear blocks identified by MAUVE were compared with the annotated gene features in *P. subalpina*. In a second step, the phylogenetic relationship among species belonging to the Pezizomycotina was analyzed using a concatenated protein dataset of 12 OXPHOS proteins (*atp6*, *cox1-3*, *cob*, *nad1-6*, *nad4L*). Proteins coding for *atp8* (48 aa) and *atp9* (74 aa) are missing in one or more of the species included in the analysis (*atp8*: *P. nodorum*; *atp9*: *P. anserina* and *P. nodorum*) and we omitted these two genes in the phylogenetic analysis. The protein data set was aligned using MAFFT [66] and the MAFFT-homologues option was applied. The resulting alignment was trimmed in GBLOCKS 0.91B [67] using default settings. *Candida albicans* served as outgroup in the phylogenetic analysis (see below).

In a third step, gene order of all 14 OXPHOS proteins, *Rps3*, and rRNAs (*rns* and *rnl*) was studied for 22 species in Pezizomycotina (Table 2) using CREX [68] and TREEREX [69] analysis. A limitation that applies to most gene order analysis approaches, including CREX and TREEREX is that they can only be applied to gene orders with an equal gene content with each gene appearing exactly once. Therefore, we had to exclude tRNA genes because the identification of homologous tRNA genes was hampered in our dataset due to gene losses and/or multiple occurrences of the same tRNA genes (see Additional file 7). Moreover, tRNAs are difficult to predict by the available tools as we have shown for *P. subalpina* (see Results), rendering them uncertain candidates for gene order analysis. An informal introduction to CREX and TREEREX analysis as well as a detailed description of the performed gene order analysis is given in the Additional file 4. The Dothideomycetes were excluded from analysis because both species were separated from all other Pezizomycotina and by themselves by very long evolutionary scenarios including several inversion and tdr1 events which makes the reconstruction unreliable. Similarly, the gene order of *P. anserina* was excluded since TreeREX cannot handle gene orders with unequal gene content (loss of *atp9* in *P. anserina*). The scenario shown in Figure 4 is derived from the separate analysis of *N. crassa* and *P. anserina* considering the common genes only.

### Searching regions for species diagnosis in PAC

The following strategy was applied to identify regions suitable for species diagnosis in PAC. In a first step, four

fragments each between 1,200-2,800 bp long spanning coding and intergenic regions in the mtDNA were chosen (*cox1*, *rnl*, *nad1-nad4*, *Rps3*- putative N-acetyltransferase) and amplified in four additional PAC species (*A. applanata*, *P. fortinii* s.s., *P. helvetica*, and *P. europaea*) including the phylogenetically most distantly related PAC species known to date (*P. europaea* and *A. applanata*) [14]. Coding regions were chosen because they were either shown to be suitable for species diagnosis previously [17] or have the potential to be used to diagnose also closely related species of PAC. In contrast, intergenic regions were chosen because they were shown to be highly polymorphic [20]. Nucleotide diversity for the five species was analyzed in DNASP V5.0 [70] and SITES [71]. Based on these results, one coding region (*rnl*) and two intergenic regions (*nad1-nad4*, *Rps3*- putative N-acetyltransferase) were selected. These three loci were then tested on a broader collection of strains to study the evolution of mtDNA within PAC species and their suitability for species diagnosis. The dataset includes 32 strains belonging to 8 PAC species (Table 3). For primers used to amplify and sequence fragments see Additional file 8. Fragments were amplified in a 15 µl reaction volume using approximately 5 ng of template DNA. After an initial denaturation step for 2 min at 94°C, 31 cycles were performed each consisting of a denaturation step at 94°C for 30 s, an annealing step at 50°C for 30 s and an extension step at 60°C for 90 s [72] followed by a final extension step for 6 min at 72°C. Fragments were directly purified using an ExoSap protocol [15] and sequencing was conducted at the Genetic Diversity Centre (GDC, ETH Zurich). The nucleotide sequences of each locus were aligned with CLUSTALW separately and the resulting data matrices were then concatenated into one combined data matrix and subjected to phylogenetic analysis.

### Phylogenetic analysis

Phylogenetic trees were inferred using Bayesian inference (BI) and maximum likelihood (ML) methods for the protein and nucleotide dataset. ML analysis for the protein dataset was performed in TREEFINDER [73] using the substitution model selected by PROTEST [74]. ML analysis for nucleotide datasets were performed in PAUP [75] using the substitution model selected by JMODELTEST V1.0 [76]. Branch supports were provided by 1,000 bootstrap replicates for both datasets. BI trees were calculated with MRBAYES 3.1 [77] for protein and nucleotide datasets by running two analyses each consisting of two simultaneous runs with four heated chains per run. Each analysis was run for 5 Mio generations and trees were sampled every 100 generations. Post-burn-

in was assumed when the average standard deviation of split frequencies was consistently  $\leq 0.01$ . Post-burn-in trees were collected and the parameter and topology summarizations calculated. To ensure that the analyses reached stationarity and converged on the same topology and likelihood scores, the resulting likelihoods, tree topologies and model estimates were compared by eye.

The tree topologies derived from the nucleotide data sets (each single locus and the concatenated alignment) were compared with tree topologies from the concatenated sequences of four genomic regions (*b-tubulin*, *elongation factor 1- $\alpha$* , *pPF\_018* and *pPF\_076*) sequenced previously [14] using the approximately unbiased (AU) and the weighted Shimodaira and Hasegawa (WSH) tests [29]. Only one strain (type strain) per species was included to compare tree topologies. Both tests were calculated in TREEFINDER using 10,000 replicates. In addition, a compatibility matrix of nucleotide substitutions was constructed using the software SITES [71] to search for possible recombination blocks in the datasets.

## Additional files

**Additional file 1:** Titel: Transcriptomics landscape in the mt genome of *Phialocephala subalpina*. Description: Sequence coverage for 5,903 454 cDNA reads (total number of aligned bases: 1.89 Mbp) that mapped to the mt genome of *Phialocephala subalpina*. 454 reads almost exclusively mapped to coding regions of the mt genome (proteins and rDNAs) but depths of coverage differed considerably among genes.

**Additional file 2:** Titel: Protein alignments for putative ORFs. Description: Protein alignments of two putative ORFs (*ORF\_02*, *ORF\_03*) for eight PAC species.

**Additional file 3:** Titel: Gene order data used for TreeREx and CREx analysis. Descriptions: Gene order data for 13 unique gene orders observed in species belonging to the Pezizomycotina and used for TreeREx and CREx analysis.

**Additional file 4:** Titel: CREx and TreeREx analysis. Description: In the first two sections an informal introduction to CREx and TREEEX is given. For a detailed introduction we refer to Berni et al. (2007, 2008). Sections 3 to 6 include a detailed description of the gene order analyses performed completing the results included in the paper.

**Additional file 5:** Titel: Polymorphism screening in PAC. Description: Amount and distribution of polymorphisms found at four mt loci for five species of the *Phialocephala fortinii* s.l. - *Acephala applanata* species complex (PAC). The four loci included approx. 7,800 bp representing 17.8% of the mt genome. The position of protein coding regions and rDNAs are indicated. Thick bars represent the fragment chosen for testing mt loci for species diagnosis in PAC (8 species, 32 strains).

**Additional file 6:** Titel: List of primers used to sequence the mt genome of *Phialocephala subalpina*. Description: List of primers used to amplify and sequence the complete mt genome of *Phialocephala subalpina*.

**Additional file 7:** Titel: Presence/absence of tRNA genes in species belonging to the Pezizomycotina included in CREx and TREEEX analysis.

**Additional file 8:** Titel: Primers used for phylogenetic analysis in the *Phialocephala fortinii* s.l. - *Acephala applanata* species complex (PAC). Description: Primers used to amplify three mtDNA loci in eight species belonging to PAC.

## Abbreviations

PAC: *Phialocephala fortinii* s.l. - *Acephala applanata* species complex; OXPPOS: Proteins of the oxidative phosphorylation system; ORF: Open reading frame.

## Competing interests

The authors declare that they have no competing interests.

## Acknowledgements

We thank S. Torriani for helpful discussions on a previous draft of this manuscript. The Functional Genomics Centre Zurich (FGCZ, Uni/ETH Zurich) and the Genetic Diversity Centre (GDC, ETH Zurich) provided facilities for collecting the sequence data. This study was partially funded by Vontobel Stiftung, Zürich to CRG.

## Author details

<sup>1</sup>Forest Pathology and Dendrology Institute of Integrative Biology (IBZ), ETH Zurich, CH-8092, Zurich, Switzerland. <sup>2</sup>Bioinformatics, Department of Biology University of Berne, Baltzerstrasse 6CH-3012, Bern, Switzerland. <sup>3</sup>Genetic Diversity Centre (GDC) ETH Zurich, CH-8092, Zurich, Switzerland. <sup>4</sup>Parallel Computing and Complex Systems Group, Department of Computer Science University of Leipzig, Johannisgasse 26D-04009, Leipzig, Germany. <sup>5</sup>Microsynth AG, Schützenstrasse 15CH-9436, Balgach, Switzerland.

## Authors' contributions

AD and CRG designed the research project. AD and CRG performed all experiments and collected sequence data. RB, SZ, MB and CRG implemented analytical tools and performed analysis. CRG, RB, MB and SZ wrote the manuscript. All authors have read and approved the final manuscript.

Received: 19 May 2011 Accepted: 4 May 2012

Published: 4 May 2012

## References

1. Grünig CR, Sieber TN, Rogers SO, Holdenrieder O: Genetic variability among strains of *Phialocephala fortinii* and phylogenetic analysis of the genus *Phialocephala* based on rDNA ITS sequence comparisons. *Can J Bot* 2002, **80**(12):1239-1249.
2. Wang Z, Binder M, Schoch CL, Johnston PR, Spatafora JW, Hibbett DS: Evolution of helotialean fungi (Leotiomycetes, Pezizomycotina): A nuclear rDNA phylogeny. *Mol Phylogenet Evol* 2006, **41**(2):295-312.
3. Grünig CR, Queloz V, Duò A, Sieber TN: Phylogeny of *Phaeomollisia piceae* gen. sp. nov.: a dark-septate conifer-needle endophyte and its relationships to *Phialocephala* and *Acephala*. *Mycol Res* 2009, **113**(2): 207-221.
4. Queloz V, Sieber TN, Holdenrieder, McDonald BA, Grünig CR: No biogeographical pattern for a root-associated fungal species complex. *Global Ecol Biogeogr* 2011, **20**(1):160-169.
5. Piercey MM, Graham SW, Currah RS: Patterns of genetic variation in *Phialocephala fortinii* across a broad latitudinal transect in Canada. *Mycol Res* 2004, **108**(8):955-964.
6. Grünig CR, Queloz V, Sieber TN, Holdenrieder O: Dark septate endophytes (DSE) of the *Phialocephala fortinii* s.l. - *Acephala applanata* species complex in tree roots—classification, population biology and ecology. *Botany* 2008, **86**(12):1355-1369.
7. Zhang C, Yin L, Dai S: Diversity of root-associated fungal endophytes in *Rhododendron fortunei* in subtropical forests of China. *Mycorrhiza* 2009, **19**(6):417-423.
8. Grünig CR, Duò A, Sieber TN, Holdenrieder O: Assignment of species rank to six reproductively isolated cryptic species of the *Phialocephala fortinii* s.l.-*Acephala applanata* species complex. *Mycologia* 2008, **100**(1):47-67.
9. Grünig CR, Sieber TN: Molecular and phenotypic description of the widespread root symbiont *Acephala applanata* gen. et sp. nov., formerly known as dark septate endophyte Type 1. *Mycologia* 2005, **97**(3):628-640.
10. Grünig CR, McDonald BA, Sieber TN, Rogers SO, Holdenrieder O: Evidence for subdivision of the root-endophyte *Phialocephala fortinii* into cryptic species and recombination within species. *Fung Genet Biol* 2004, **41**(7):676-687.
11. Grünig CR, Duò A, Sieber TN: Population genetic analysis of *Phialocephala fortinii* s.l. and *Acephala applanata* in two undisturbed forests in Switzerland and evidence for new cryptic species. *Fung Genet Biol* 2006,

- 43(6):410–421.
12. Queloz V, Grünig CR, Sieber TN, Holdenrieder O: Monitoring the spatial and temporal dynamics of a community of the tree-root endophyte *Phialocephala fortinii* s.l. *New Phytol* 2005, **168**(3):651–660.
  13. Peay KG, Kennedy PG, Bruns TD: Fungal Community Ecology: A Hybrid Beast with a Molecular Master. *Bioscience* 2008, **58**(9):799–810.
  14. Grünig CR, Brunner PC, Duò A, Sieber TN: Suitability of methods for species recognition in the *Phialocephala fortinii* - *Acephala applanata* species complex using DNA analysis. *Fung Genet Biol* 2007, **44**(8):773–788.
  15. Queloz V, Duo A, Sieber TN, Grünig CR: Microsatellite size homoplasies and null alleles do not affect species diagnosis and population genetic analysis in a fungal species complex. *Mol Ecol Resour* 2010, **10**:348–367.
  16. Pantou MP, Kouvelis VN, Typas MA: The complete mitochondrial genome of the vascular wilt fungus *Verticillium dahliae*: a novel gene order for *Verticillium* and a diagnostic tool for species identification. *Curr Genet* 2006, **50**(2):125–136.
  17. Seifert KA, Samson RA, Dewaard JR, Houbraken J, Lévesque CA, Moncalvo J-M, Louis-Seize G, Hebert PDN: Prospects for fungus identification using CO1 DNA barcodes, with *Penicillium* as a test case. *Proc Natl Acad Sci USA* 2007, **104**(10):3901–3906.
  18. Kouvelis VN, Sialakouma A, Typas MA: Mitochondrial gene sequences alone or combined with ITS region sequences provide firm molecular criteria for the classification of *Lecanicillium* species. *Mycol Res* 2008, **112**:829–844.
  19. Burger G, Gray M, Lang B: Mitochondrial genomes: anything goes. *Trends Genet* 2003, **19**(12):709–716.
  20. Ghikas DV, Kouvelis VN, Typas MA: Phylogenetic and biogeographic implications inferred by mitochondrial intergenic region analyses and ITS1–5.8S-ITS2 of the entomopathogenic fungi *Beauveria bassiana* and *B. brongniartii*. *BMC Microbiol* 2010, **10**:174.
  21. Gray M, Burger G, Lang B: Mitochondrial evolution. *Science* 1999, **283** (5407):1476–1481.
  22. Lavin JL, Oguiza JA, Ramirez L, Pisabarro AG: Comparative genomics of the oxidative phosphorylation system in fungi. *Fungal Genet Biol* 2008, **45** (9):1248–1256.
  23. Wu Y, Yang J, Yang F, Liu T, Leng W, Chu Y, Jin Q: Recent dermatophyte divergence revealed by comparative and phylogenetic analysis of mitochondrial genomes. *BMC Genomics* 2009, **10**:238.
  24. Sethuraman J, Majer A, Friedrich NC, Edgell DR, Hausner G: Genes within Genes: Multiple LAGLIDADG Homing Endonucleases Target the Ribosomal Protein S3 Gene Encoded within an rnl Group I Intron of Ophiostoma and Related Taxa. *Mol Biol Evol* 2009, **26**(10):2299–2315.
  25. Monteiro-Vitorello CB, Hausner G, Searles DB, Gibb EA, Fulbright DW, Bertrand H: The *Cryphonectria parasitica* mitochondrial rns gene: Plasmid-like elements, introns and homing endonucleases. *Fungal Genet Biol* 2009, **46**(11):837–848.
  26. Gibb E, Hausner G: Optional mitochondrial introns and evidence for a homing-endonuclease gene in the mtDNA rnl gene in *Ophiostoma ulmi* s. lat. *Mycol Res* 2005, **109**:1112–1126.
  27. Torriani SFF, Goodwin SB, Kema GHJ, Pangilinan JL, McDonald BA: Intraspecific comparison and annotation of two complete mitochondrial genome sequences from the plant pathogenic fungus *Mycosphaerella graminicola*. *Fungal Genet Biol* 2008, **45**(5):628–637.
  28. Kirk PM, Cannon PF, David JC, Stalpers JA: (Eds): *Dictionary of the fungi*. 9th edition. Oxon, UK: CAB International; 2001.
  29. Shimodaira H: An approximately unbiased test of phylogenetic tree selection. *Syst Biol* 2002, **51**(3):492–508.
  30. Polevoda B, Sherman F: The diversity of acetylated proteins. *Genome Biol* 2002, **3**(5):reviews0006–reviews0006.6.
  31. Yoshikawa A, Isono S, Sheback A, Isono K: Cloning and nucleotide sequencing of the genes rimI and rimJ which encode enzymes acetylating ribosomal proteins S18 and S5 of *Escherichia coli* K12. *Mol Gen Genet* 1987, **209**(3):481–488.
  32. Isono K, Isono S: Ribosomal protein modification in *Escherichia coli*. II. Studies of a mutant lacking the N-terminal acetylation of protein S18. *Mol Gen Genet* 1980, **177**(4):645–651.
  33. Hane JK, Lowe RGT, Solomon PS, Tan K-C, Schoch CL, Spatafora JW, Crous PW, Kodira C, Birren BW, Galagan JE, et al: Dothideomycete-plant interactions illuminated by genome sequencing and EST analysis of the wheat pathogen *Stagonospora nodorum*. *Plant Cell* 2007, **19**(11): 3347–3368.
  34. Sethuraman J, Majer A, Iranpour M, Hausner G: Molecular Evolution of the mtDNA Encoded rps3 Gene Among Filamentous Ascomycetes Fungi with an Emphasis on the Ophiostomatoid Fungi. *J Mol Evol* 2009, **69**(4):372–385.
  35. Debuchy R, Brygoo Y: Cloning of opal suppressor tRNA genes of a filamentous fungus reveals two tRNA<sup>SerUGA</sup> genes with unexpected structural differences. *EMBO J* 1985, **4**(13A):3553–3556.
  36. Grimm M, Nass A, Schüll C, Beier H: Nucleotide sequences and functional characterization of two tobacco UAG suppressor tRNA(Gln) isoacceptors and their genes. *Plant Mol Biol* 1998, **38**(5):689–697.
  37. Baum M, Beier H: Wheat cytoplasmic arginine tRNA isoacceptor with a U\*CG anticodon is an efficient UGA suppressor in vitro. *Nucleic Acids Res* 1998, **26**(6):1390–1395.
  38. Beier H, Grimm M: Misreading of termination codons in eukaryotes by natural nonsense suppressor tRNAs. *Nucleic Acids Res* 2001, **29**(23): 4767–4782.
  39. Faure E, Delaye L, Tribolo S, Levasseur A, Seligmann H, Barthélémy R-M: Probable presence of an ubiquitous cryptic mitochondrial gene on the antisense strand of the cytochrome oxidase I gene. *Biol Direct* 2011, **6**:56.
  40. Seligmann H: Two genetic codes, one genome: frameshifted primate mitochondrial genes code for additional proteins in presence of antisense antitermination tRNAs. *Biosystems* 2011, **105**(3):271–285.
  41. Covello PS, Gray MW: Silent mitochondrial and active nuclear genes for subunit 2 of cytochrome c oxidase (cox2) in soybean: evidence for RNA-mediated gene transfer. *EMBO J* 1992, **11**(11):3815–3820.
  42. Harismendy O, Ng PC, Strausberg RL, Wang XY, Stockwell TB, Beeson KY, Schork NJ, Murray SS, Topol EJ, Levy S, et al: Evaluation of next generation sequencing platforms for population targeted sequencing studies. *Genome Biol* 2009, **10**(3):R32.
  43. Costanzo MC, Fox TD: Control of mitochondrial gene expression in *Saccharomyces cerevisiae*. *Annu Rev Genet* 1990, **24**:91–113.
  44. Cummings DJ, McNally KL, Domenico JM, Matsuura ET: The complete DNA sequence of the mitochondrial genome of *Podospira anserina*. *Curr Genet* 1990, **17**(5):375–402.
  45. Kunisawa T: Inference of the phylogenetic position of the phylum Deferribacteres from gene order comparison. *Antonie Van Leeuwenhoek* 2011, **99**(2):417–422.
  46. Sankoff D, Leduc G, Antoine N, Paquin B, Lang B, Cedergren R: Gene order comparisons for phylogenetic inference - Evolution of the mitochondrial genome. *Proc Natl Acad Sci USA* 1992, **89**(14):6575–6579.
  47. Sun X, Li H, Yu D: Complete mitochondrial genome sequence of the phytopathogenic fungus *Penicillium digitatum* and comparative analysis of closely related species. *FEMS Microbiol Lett* 2011, **323**(1):29–34.
  48. Kunisawa T: The phylogenetic placement of the non-photosynthetic, Gram-positive thermophile '*Thermobaculum terrenum*' and branching orders within the phylum 'Chloroflexi' inferred from gene order comparisons. *Int J Systematic Evol Microbiol* 2011, **61**:1944–1953.
  49. Saccone C, Gissi C, Reyes A, Larizza A, Sbsa E, Pesole G: Mitochondrial DNA in metazoa: degree of freedom in a frozen event. *Gene* 2002, **286**(1):3–12.
  50. Jühling F, Pütz J, Bernt M, Donath A, Middendorff M, Florentz C, Stadler PF: Improved systematic tRNA gene annotation allows new insights into the evolution of mitochondrial tRNA structures and into the mechanisms of mitochondrial genome rearrangements. *Nucleic Acids Res*; 2011.
  51. Sommerhalder RJ, McDonald BA, Zhan J: Concordant evolution of mitochondrial and nuclear genomes in the wheat pathogen *Phaeosphaeria nodorum*. *Fungal Genet Biol* 2007, **44**(8):764–772.
  52. Anderson J, Wickens C, Khan M, Cowen L, Federspiel N, Jones T, Kohn L: Infrequent genetic exchange and recombination in the mitochondrial genome of *Candida albicans*. *J Bacteriol* 2001, **183**(3):865–872.
  53. van Diepeningen AD, Goedbloed DJ, Slakhorst SM, Koopmanschap AB, Maas MFPM, Hoekstra RF, Debets AJM: Mitochondrial recombination increases with age in *Podospira anserina*. *Mech Ageing Dev* 2010, **131**(5):315–322.
  54. Barr CM, Neiman M, Taylor DR: Inheritance and recombination of mitochondrial genomes in plants, fungi and animals. *New Phytol* 2005, **168**(1):39–50.
  55. Seifert KA: Progress towards DNA barcoding of fungi. *Mol Ecol Resour* 2009, **9**:83–89.
  56. Ghikas DV, Kouvelis VN, Typas MA: The complete mitochondrial genome of the entomopathogenic fungus *Metarhizium anisopliae* var. *anisopliae*: gene order and trn gene clusters reveal a common evolutionary course for all Sordariomycetes, while intergenic regions show variation. *Arch Microbiol* 2006, **185**(5):393–401.



57. Zaffarano PL, Duò A, Grünig CR: **Characterization of the mating type (MAT) locus in the *Phialocephala fortinii* s.l. -*Acephala applanata* species complex.** *Fungal Genet Biol* 2010, **47**(9):761–772.
58. **NCBI ORF finder:** [<http://www.ncbi.nlm.nih.gov/gorf/gorf.html>]
59. Altschul SF, Madden TL, Schäffer AA, Zhang J, Zhang Z, Miller W, Lipman DJ: **Gapped BLAST and PSI-BLAST: a new generation of protein database search programs.** *Nucleic Acids Res* 1997, **25**(17):3389–3402.
60. **EMBOSS tools:** [<http://www.ebi.ac.uk/Tools/pfa/iprscan/>]
61. Lowe T, Eddy S: **tRNAscan-SE: A program for improved detection of transfer RNA genes in genomic sequence.** *Nucleic Acids Res* 1997, **25**(5):955–964.
62. Lang BF, Laforest M-J, Burger G: **Mitochondrial introns: a critical view.** *Trends Genet* 2007, **23**(3):119–125.
63. Sonnhammer EL, Durbin R: **A dot-matrix program with dynamic threshold control suited for genomic DNA and protein sequence analysis.** *Gene* 1995, **167**(1–2):GC1–GC10.
64. Gremme G, Brendel V, Sparks M, Kurtz S: **Engineering a software tool for gene structure prediction in higher organisms.** *Inform Software Tech* 2005, **47**(15):965–978.
65. Darling ACE, Mau B, Blattner FR, Perna NT: **Mauve: Multiple Alignment of Conserved Genomic Sequence With Rearrangements.** *Genome Res* 2004, **14**(7):1394–1403.
66. **MAFFT:** [<http://mafft.cbrc.jp/alignment/server/index.html>]
67. **Gblocks 0.91b:** [[http://www.phylogeny.fr/version2.cgi/one\\_task.cgi?task\\_type=gblocks](http://www.phylogeny.fr/version2.cgi/one_task.cgi?task_type=gblocks)]
68. Bernt M, Merkle D, Ramsch K, Fritsch G, Perseke M, Bernhard D, Schlegel M, Stadler PF, Middendorf M: **CREx: inferring genomic rearrangements based on common intervals.** *Bioinformatics* 2007, **23**(21):2957–2958.
69. Bernt M, Merkle D, Middendorf M: **An Algorithm for Inferring Mitochondrial Genome Rearrangements in a Phylogenetic Tree.** In Comparative Genomics International Workshop, RECOMB-CG: *Paris, Lecture Notes in Computer Sciences (LNCS)*. Berlin: Springer 2008, **2008**:143–157.
70. Rozas J, Sanchez-DelBarrio JC, Messeguer X, Rozas R: **DnaSP, DNA polymorphism analyses by the coalescent and other methods.** *Bioinformatics* 2003, **19**(18):2496–2497.
71. Hey J, Wakeley J: **A coalescent estimator of the population recombination rate.** *Genetics* 1997, **145**:833–846.
72. Su X, Wu Y, Sifri C, Wellems T: **Reduced extension temperatures required for PCR amplification of extremely A + T-rich DNA.** *Nucleic Acids Res* 1996, **24**(8):1574–1575.
73. Jobb G: **TREEFINDER version of November 2010.** [<http://www.treefinder.de/>]
74. Darriba D, Taboada GL, Doallo R, Posada D: **ProtTest 3: fast selection of best-fit models of protein evolution.** *Bioinformatics* 2011, **27**(8):1164–1165.
75. Swofford DL: *PAUP: phylogenetic analysis using parsimony, version 3.1.1.* Champaign, IL: Illinois Natural History Survey; 1993.
76. Posada D: **jModelTest: phylogenetic model averaging.** *Mol Biol Evol* 2008, **25**(7):1253–1256.
77. Ronquist F, Huelsenbeck JP: **MrBayes 3: Bayesian phylogenetic inference under mixed models.** *Bioinformatics* 2003, **19**(12):1572–1574.

doi:10.1186/1471-2164-13-166

**Cite this article as:** Duò *et al.*: Mitochondrial genome evolution in species belonging to the *Phialocephala fortinii* s.l. - *Acephala applanata* species complex. *BMC Genomics* 2012 **13**:166.

**Submit your next manuscript to BioMed Central and take full advantage of:**

- Convenient online submission
- Thorough peer review
- No space constraints or color figure charges
- Immediate publication on acceptance
- Inclusion in PubMed, CAS, Scopus and Google Scholar
- Research which is freely available for redistribution

Submit your manuscript at  
[www.biomedcentral.com/submit](http://www.biomedcentral.com/submit)

