

Precision, Proteome Coverage, and Dynamic Range of Arabidopsis Proteome Profiling Using ^{15}N Metabolic Labeling and Label-free Approaches^S

Borjana Arsova‡, Henrik Zauber‡, and Waltraud X. Schulze‡§

This study reports the comprehensive comparison of ^{15}N metabolic labeling and label free proteomic strategies for quantitation, with particular focus on plant proteomics. Our investigation of proteome coverage, dynamic range and quantitative precision for a wide range of mixing ratios and protein loadings aim to aid the investigators in the decision making process during experimental design. One of the main characteristics of the label free strategy is the applicability to all starting material, which is a limitation to the metabolic labeling. However, particularly at mixing ratios up to 10-fold the ^{15}N metabolic labeling proved to be more precise. Contrary to usual practice based on the results from this study, we suggest that nonequal mixing ratios in metabolic labeling could further increase the proteome coverage for quantitation. On the other hand, the label free strategy, in combination with low protein loading allows the extension of the dynamic range for quantitation and it is more precise at very high ratios, which could be important for certain types of experiments. *Molecular & Cellular Proteomics* 11: 10.1074/mcp.M112.017178, 619–628, 2012.

Quantitative comparative analyses of proteomes and their dynamic changes under various growth conditions and stimuli has become a widely used approach in experimental and systems biology. Quantitative proteome analysis is particularly important when the functional roles of proteins in biological contexts are being addressed. This has been greatly aided by the development of soft ionization methods for macromolecules (1, 2) and with ongoing developments in high accuracy mass spectrometer instrument technology (3, 4). Thus, analysis of thousands of proteins in a high-throughput manner is now almost a routine task. In parallel, completion of annotated genome sequences for a range of model organisms has opened these for large-scale proteome studies (5). In plant science, the expansion of sequencing efforts to key crop

plant species provides a solid basis for efficient interpretation of acquired peptide mass spectra for proteome wide studies also in commercially important crop plants. Various methods and workflows for large-scale quantitative proteome profiling have been developed in the past years (reviewed in (6–8)). Among them, metabolic labeling using stable isotope labeled amino acids in mammalian cell cultures (9) or full ^{15}N -labeling for autotrophic organisms (5, 10) are now widely used. In addition, more recently, label-free methods involving computational alignment of ion chromatograms based on accurate mass and retention time of detected ions have been developed and are increasingly used either in studies on tissue not accessible to metabolic labeling or because of their simple and cheap experimental design (6, 11–16). In addition, chemical labeling using differential mass tags today allows quantitative comparisons in multiplexed samples (17).

Previous studies comparing methods for relative quantitation of proteins in a mixture with known protein abundance ratios, concluded that it was the researcher's experience that was decisive for correct quantitation and that no method, as such, out-performed others (18). In a more systematic analysis, the two-dimensional-DIGE method was compared with the chemical labeling strategies cleavable isotope-coded affinity tags (cICAT)¹ and isobaric tags for relative and absolute quantification (iTRAQ) (19) concluding that two-dimensional-gel based quantitation and chemical labeling were complementary strategies. However, in many cases, comparative analysis of methods has been carried out using a less complex mixture of known standard proteins rather than using particular mixing ratios of truly complex proteomes. A comparison of quantitation by stable isotope labeling with amino acids (SILAC) with spectrum counting using mammalian cell lines as an example revealed higher sensitivity of quantitation in the metabolic labeling but higher sequence coverage of identified proteins with the label-free method (20).

From the ‡Max-Planck Institute of Molecular Plant Physiology, Am Mühlenberg 1, 14476 Potsdam, Germany

Received January 13, 2012, and in revised form, April 2, 2012

Published, MCP Papers in Press, May 5, 2012, DOI 10.1074/mcp.M112.017178

¹ The abbreviations used are: cICAT, cleavable isotope-coded affinity tags; iTRAQ, isobaric tags for relative and absolute quantification; SILAC, stable isotope labeling with amino acids; LTQ, linear trap quadrupole.

Particularly for studying the proteome of plant species, several issues during sample preparation have to be addressed that may also influence the choice of quantitation strategy: Because plant cells are surrounded by a cell wall, the plant proteins usually are only accessible after rigorous mechanical destruction of the cells by mortar and pestle or a ball mill leading to potential losses of protein yield. Particularly when working on green tissue, a highly skewed protein abundance distribution has to be considered, with ribulose-bisphosphate carboxylase being the most highly abundant protein in leaf tissue with an at least 2000-fold higher abundance than some of the kinases or transcription factors (21). Furthermore, the plant cell is not only shaped by the cell wall but also by the large central vacuole that helps to build the turgor pressure. This organelle takes up a large proportion of the cellular volume. Therefore the protein content per fresh weight in mature plant tissue can be rather low. Finally, some plant species and tissues, such as senescent leaves, flowers or stressed plants, often have a high content of secondary metabolites—polymeric carbohydrates, phenolic compounds, isoprenoids and alkaloids. These classes of small molecules are usually very hard to separate from protein or peptides during sample preparation and can provide a serious challenge to subsequent mass spectrometric analysis.

Because of their autotrophic nature, for quantitative comparisons in plants, full labeling with ¹⁵N-inorganic salts has in the past years been established by various groups as a widely used strategy for quantitative comparisons (reviewed in: (22)). However, the method fails to cover the entire spectrum of tissues used in modern plant science. For example, full metabolic labeling is not readily applicable to the most natural and widely used starting material, namely the soil-grown plant. In order to compensate for this deficiency the experimenter will have to use different quantitation strategies (e.g. label-free or chemical labeling), or spike in common isotope-labeled reference tissue (23, 24).

Despite this vast choice of analytical methods for quantitative proteome profiling, the performance quality regarding proteome coverage, quantitative precision and dynamic range has not been systematically evaluated for plant-derived protein extracts on modern high mass accuracy instruments. In order to provide a solid basis for decision on quantitative strategies in plant proteomics, we performed an in-depth comparison between the metabolic ¹⁵N labeling and the label free methods using conditions of wide range of protein amounts per sample and comparative ratios of complex protein mixtures.

EXPERIMENTAL PROCEDURES

Metabolic Labeling of Cell Cultures, Sample Mixing, and Protein Extraction—Metabolically ¹⁵N-labeled and unlabeled Arabidopsis cell cultures were grown and harvested as described (10). On average, the ¹⁵N-labeling efficiency of the proteins was at 96.7 atom%, ranging from 91.2 atom% to 99.4 atom%, as estimated based on the ratio of the monoisotopic (M) peak and the M-1 peak (25).

The cells were grown in medium with 10 mM potassium nitrate as the sole nitrogen source, which was supplied either in normal form (natural abundance of nitrogen, yielding unlabeled cells) or in 98 atom% enriched ¹⁵N form (yielding metabolically labeled cells). ¹⁵N-enriched salts were obtained from Sigma-Aldrich. Frozen cells were manually ground in liquid nitrogen and extracted in 50 mM Tris-HCl pH 7.5, 1% Nonidet P-40, and a protease inhibitor mixture (Complete Tabs, Roche). The cell debris was pelleted by centrifugation 10 min at 4000rpm and 4 °C. The supernatant was used further. The protein content was determined using the Bradford solution (Bio-Rad, Hercules, CA).

In the case of the metabolic labeling approach, ¹⁵N-labeled and unlabeled samples were mixed in specific ratios at different total protein content (Table I). Details on mixed protein amounts from labeled and unlabeled protein are listed in [supplemental Table S1](#). In the case of the label free approach, the samples were aliquoted based on protein content also covering a 100-fold range of total protein (Table I). For each combination, three technical replicates were analyzed.


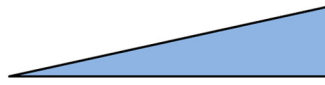
Sample Preparation for Mass Spectrometry—Protein mixtures were acetone precipitated and then in-solution digested as described (10). In brief, proteins were denatured using 6 M urea, 2 M thiourea, pH 8. After reduction and alkylation of cysteine residues by iodoacetamide, protein was digested at room temperature for 3 h by LysC (Wako, Japan). Samples were then diluted fourfold in 10 mM TrisHCl pH 8 before additional overnight digestion at room temperature with sequencing grade trypsin (Promega, Germany). In general, the workflow of sample preparation and mass spectrometric analysis is outlined in Fig. 1.

Mass Spectrometric Analysis and Protein Identification—Tryptic peptide mixtures were analyzed by LC/MS/MS using nanoflow Easy-nLC (Thermo Scientific) as an HPLC-system and an LTQ-Orbitrap hybrid mass spectrometer (Thermo Scientific) as a mass analyzer. Peptides were eluted from a 100 mm long analytical column (Reprosil C18, Dr. Maisch GmbH, Tübingen, Germany) with 75 μm inner diameter on a gradient using 0.5% acetic acid as aqueous phase (solution A) and 0.5% acetic acid in 80% acetonitrile as organic phase (solution B) and a flow-rate of 250 nL/min. Peptide elution followed a two-step gradient of 71 min of linear increase of solution B from 5% to 30%, then an increase of solution B from 30% to 60% within 14 min, followed by a 10 min wash with 90% solution B. Eluting peptides were sprayed directly into the LTQ-Orbitrap mass spectrometer. Peptides were identified by information-dependent acquisition of fragmentation spectra of multiple-charged ions. Up to five data dependent MS/MS spectra were recorded in the linear ion trap for each full scan spectrum acquired within the *m/z* range between 300 and 1500 at a resolution of 60000 FWHM in the Orbitrap. Overall cycle time was approximately 1 s, target ions for the Orbitrap were set to 10⁶ and 30,000 for the linear ion trap. For fragmentation collision-induced dissociation was chosen, collision energy was 35 eV.

Fragment MS/MS spectra from raw files were extracted as DTA-files and then merged to peak lists using default settings of DTA-SuperCharge version 1.18 (msquant.alwaysdata.net) with a tolerance for precursor ion detection of 50 ppm. The DTA-files of comprising a label free technical replicate set were combined into a single file, which was submitted to the database search. In case of the metabolic labeling, samples forming the same ratio in one replicate set were grouped together and submitted to the database search. Spectra were searched against a nonredundant version of the Arabidopsis protein database (Version: TAIR 9, 33595 entries, released 2009-06-19) using the mascot algorithm version 2.2.2. (Matrix Science, UK, www.matrixscience.com). The database was supplemented with typical contaminants (trypsin, keratins, lysC, and BSA). Identified contaminants were excluded from further quantitative analysis. In all

TABLE I

Overview of the samples included in the methods comparison. For each quantitative strategy (metabolic labeling and label-free) a range of mixing ratios has been used at different total protein amounts. The triangles indicate the increasing protein loading for each ratio. In both cases, the ratios varying with a factor 10 have been represented with four protein loadings whereas intermediate ratios were represented with two protein loadings. In label-free samples, the samples with grey background were actually measured, and the ratios listed resulted from combinations of these measurements in the data analysis

Metabolic labeling ratios (¹⁵ N: ¹⁴ N)					Label-free quantitation					
Mixing ratio of ¹⁵ N: ¹⁴ N					Ratio for in silico sample comparison					Measured sample protein amount (µg)
	total protein (µg)					total protein (µg)				0.2
0.01	20.2	101	202		0.01	20.2	101	202		1
0.1	2.2	22	110	220	0.1	2.2	22	110	220	1.5
0.2	6	24			0.2	6	24			2
0.5	3	15	300		0.5	3	15	300		4
1	0.4	3	20	200	1	0.4	3	20	200	5
2	3	15	300		2	3	15	300		10
5	6	24			5	6	24			20
10	2.2	22	110	220	10	2.2	22	110	220	100
100	20.2	101	202		100	20.2	101	202		200

cases, search parameters included carbamidomethylation as a fixed modification for cysteines, and methionine oxidation as a variable modification. Identified peptides were required to be fully tryptic peptides, whereas two missed cleavages were allowed. Precursor mass tolerance was set to 10 ppm, MS/MS tolerance was set to 0.8 Da. For the metabolic labeling samples, “¹⁵N metabolic labeling” was chosen as a quantitative method during Mascot database searching, allowing identification of ¹⁵N-labeled and unlabeled peptides within the same database search. For samples from label-free comparison, no quantification method was selected.

In general, only peptide identifications with a length of more than five amino acids were considered. Peptides were accepted without manual interpretation if they displayed a Mascot score greater than 29 as defined by Mascot $p < 0.01$ significance threshold. Peptide assignment to protein groups was done according to the Mascot default settings. Thus, each redundant peptide was primarily assigned to the highest scoring protein. Isoforms of protein only appear in the tables as separate protein entry if they were assigned at least one unique peptide.

Samples for label-free quantitation were also analyzed by MaxQuant version 1.1.1.14 (26, 27) to study the effect of retention time correlation on the number of quantified protein pairs. The same settings for database, modifications and enzyme cleavage and peptide length were used as described above. Peptide false-discovery rate and protein false-discovery rate were set to 0.01. Two analyses with MaxQuant were carried out, either with or without selection of “match between runs.” MaxQuant data were only used for counting the number of identified proteins.

Calculation of ¹⁵N Enrichment—As already described, the enrichment of heavy nitrogen within the metabolically labeled proteome can be linked to the relative intensities of the Monoisotopic (M) and M-1

satellite peaks in the MS spectrum of a peptide (25). Thus to estimate the percentage of heavy nitrogen enrichment we used the following equation $((M - 1)/M) \times 100$ where M is the intensity of the monoisotopic peak of the analyzed peptide in the full scan. This calculates the percentage of $M - 1$ from the Monoisotopic peak. The enrichment was calculated by deducing the $(M - 1)\%$ from 100, which would be the case when complete labeling is achieved. Average ¹⁵N enrichment was calculated from 20 randomly selected peptides.

Quantitative Analysis: ¹⁵N Metabolic Labeling—Ratios between labeled and unlabeled forms of each tryptic peptides were calculated in MSQuant version 1.5.a22 (released 2008-05-30; msquant.sourceforge.net). Quantitative information was taken from extracted ion chromatograms of labeled and unlabeled form of each identified peptide. Thereby, co-elution of both peptide forms was made a requirement.

Intensity ratios of labeled ¹⁵N-form to unlabeled ¹⁴N-form of each identified peptide were averaged across all peptides belonging to the same protein within one experimental set. Nonproteotypic peptides were excluded from quantitative analysis if they displayed ratios significantly different from proteotypic peptides of the same protein (28, 29). Peptides meeting the criteria for sequence identification, but for which only ¹⁴N forms or only ¹⁵N forms were quantified and therefore no ratio could be calculated, were counted as identified, but not as quantified. Because quantitative information was extracted from full scan spectra obtained in the Orbitrap mass analyzer with very low level of noise, no minimum threshold was set for quantitation (30). The obtained ratios were log2 transformed and median normalization was carried out as described (31). Average for each peptide ion species were calculated across technical replicates.

Raw data files (supplemental Table S1A) have been submitted to the Tranche database (www.proteomecommons.org/tranche)

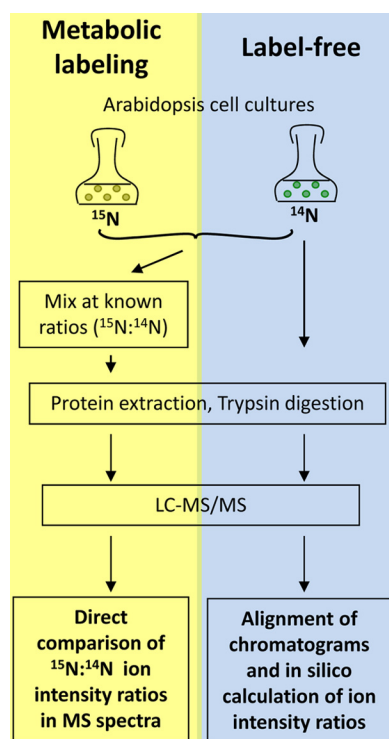


FIG. 1. Workflow of the method comparison. Metabolic labeling: Labeled and unlabeled cell cultures were mixed at different protein ratios prior to protein digestion and mass spectrometric analysis. Intensity ratios were directly determined from the acquired MS spectra. Label-free comparison: Different total amounts of protein were digested and analyzed. Total ion chromatograms were then aligned and intensity ratios were calculated from different raw files.

and can be accessed using the following hash: bEA4aOFnbQ5MxP0vIjxz7+gmFBH4HC3pEACNS63nh9610rkhqjQHHT2/d1JGXhHPnNG5kb+X9h2HyUbr3YjWp/QIHUYAAAAAABD8A== (15N-labeling dataset).

Quantitative Analysis: Label-free Comparison—Label-free relative quantitation was performed as described (28, 32). Ion intensity extraction, based on ion chromatograms of the raw data files was done using MSQuant (version 1.4.3; released 2008-05-30; msquant.alwaysdata.net). For each peptide ion species (*i.e.* each *m/z* value), the ion intensity within each sample was normalized to the total ion intensity of all peptide ions in that sample. A normalization factor was calculated by dividing the protein amount in the sample (in μg) by the average protein amount in the label free replica set. Ion intensity ratios between different samples were then calculated based on the normalized peptide ion intensities. Protein abundance ratios were calculated by averaging respective peptide ion intensity ratios. Nonproteotypic peptides were excluded from quantitative analysis if they displayed ratios significantly different from proteotypic peptides of the same protein (28, 29). Average for each peptide ion species were calculated across technical replicates.

In order to investigate the influence of retention time correlation the label free samples were processed separately using the MaxQuant software version 1.1.1.14 (26) with and without the “match between runs” function. This data was used only for comparing the number of identified peptides with and without retention time correlation, but not for the assessment of precision and dynamic range.

Raw data files (supplemental Table S1B) have been submitted to the Tranche database (www.proteomecommons.org/tranche) and

can be accessed using the following hash: lJ/g1iB4s+TrLKf49IQ78sZBOKlg46kU87iWXD9/Ah1ZButZPsiGHoawtxgrpcFf+fPGe10Zf5T17PIDLdjhKOVZ0jMAAAAAAAXRQ== (label-free dataset).

Calculations and Statistics—Data normalization and outlier tests were carried out using in-house R-scripts and Excel spreadsheets. SigmaPlot version 11.0 (Systat Software Inc.) was used for the generation of the presented plots.

RESULTS

The aim of this study was to perform a robust comparative analysis of metabolic ¹⁵N-labeling and label-free quantitation across a wide range of mixing ratios derived from plant protein extracts. Parallel to variation of the mixing ratio, we also analyzed samples with a wide range of total protein amount. We were particularly interested in addressing method-specific differences in proteome coverage, quantitative precision and the covered quantitative dynamic range.

Proteome Coverage—In general, and independent of the labeling strategy, the highest numbers of proteins were identified in samples containing about 20 to 100 μg total protein amount. Among the three replicates, 1189 and 1186 proteins were identified in 100 μg and 20 μg label free samples respectively, and around 1281 and 1272 protein groups were also identified in the 202 and 101 μg metabolic labeling replicas (supplemental Table S2). In samples of much lower protein content, predominantly highly abundant proteins were identified (supplemental Fig. S1A) and thus the sensitivity of the mass spectrometric detection became limiting. In contrast, particularly in mixtures for metabolic labeling, the number of identified peptides and proteins did not always increase further in samples of very high total protein amounts, and in some cases even decreased (supplemental Table S2). This is possibly because of the limiting sampling speed of the classic Orbitrap XL mass spectrometer. The increased protein loading lead to a slight broadening of chromatographic peaks (supplemental Fig. S1B), which in turn may have resulted in sampling of fewer ion species. When comparing the reciprocal ¹⁵N/¹⁴N mixtures, there was a tendency for higher numbers of protein and peptide identifications if the light isotope was more abundant in the mixture (supplemental Table S2). This is consistent with findings that fully ¹⁵N-labeled peptides sometimes are assigned an incorrect satellite isotope peak as precursor ion, which then can result in no or incorrect identification efficiency in fully ¹⁵N labeled proteomes (33). In our experiments, plant material was ¹⁵N labeled to an average of 96.7 atom%, which still produces respective ¹⁴N-enriched satellite isotope peaks (33).

It is not the total numbers of peptide and protein identifications that are critical for quantitative comparisons, but rather the number of peptide pairs that can be used for quantitation. Interestingly, for the ¹⁵N metabolic labeling samples, the highest numbers of proteins were identified and quantified in samples with at least a fivefold difference in mixing ratio (Fig. 2A). This finding was consistent across the

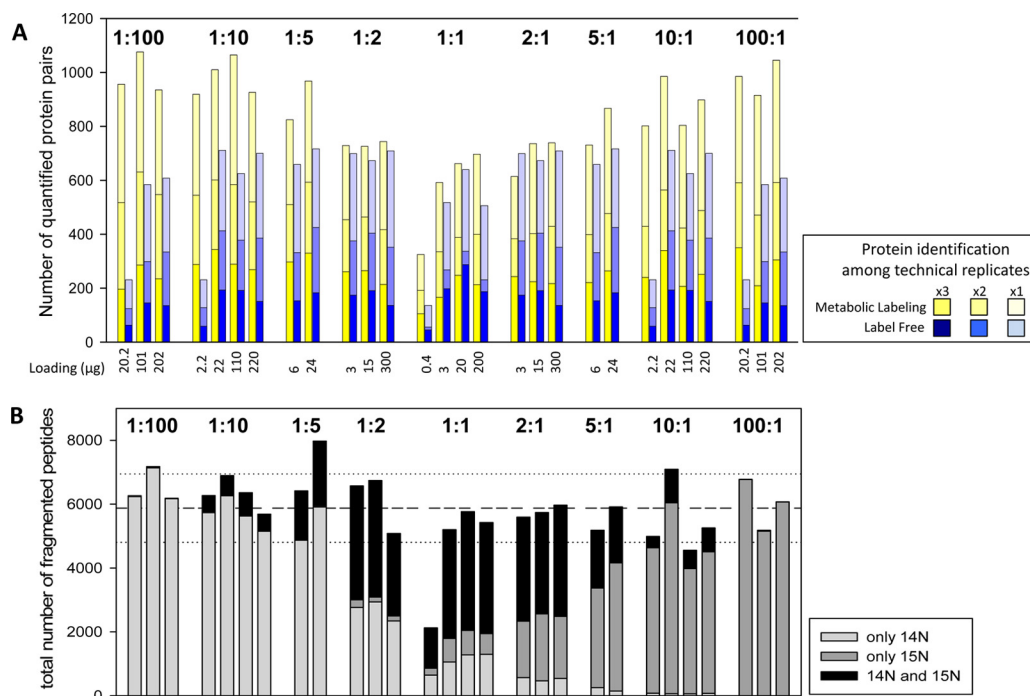


FIG. 2. **Numbers of quantified proteins.** *A*, The number of protein pairs quantified in different mixing ratios and in samples of different total protein content. *B*, Total number of fragment spectra acquired in all three replicates of each sample as sorted for the unlabeled peptide only, the labeled peptide only or for both peptide forms. Dashed line represents the average of total fragment spectra acquired across all sample, dotted lines represent standard deviation.

ranges of total protein present in each mixture. In the 1:1 mixtures consisting of equal amounts of labeled and unlabeled proteomes, the number of quantified proteins was lowest compared with samples with higher mixing ratios. This could be explained by a high rate of MS/MS fragmentations on both isotope forms of the same peptides. Thus, although on average the total number of acquired fragment spectra was similar in all sample mixtures (except for those with very low protein amount), the high rate of fragment spectra sampling both isotope partners decreased the total number of identified proteins. In contrast, in high mixing ratios, the tendency for only one isotope partner to be selected for fragmentation was higher, therefore more unique peptides mapping to different protein groups were sampled (Fig.2B).

In general, the number of quantified proteins correlated with the number of identified proteins. For metabolic labeling about 82% of all peptides identified by a fragment spectrum could be assigned a labeled or unlabeled counterpart for calculation of an abundance ratio (supplemental Fig. S3). In contrast, in the label-free samples, the overlap of peptide pairs based on MS/MS events was lower, particularly in those samples with extreme comparative ratios. On average, only 46% of all identified proteins could be directly quantified by label-free approach.

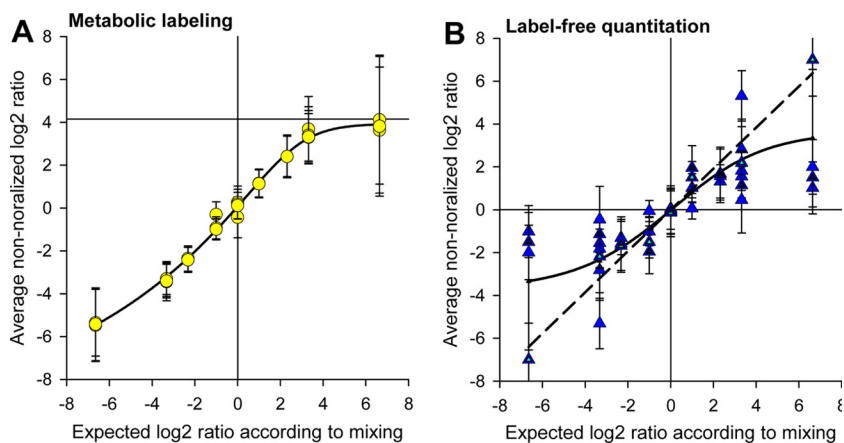
For label-free quantitation, the number of quantified proteins was independent of the ratio comparison, but showed a tendency for higher number of quantitation pairs in samples with higher protein amount. Furthermore, the number of peptide

pairs for label-free quantitation could be increased on average by 25% once peaks without MS/MS fragmentation were included based on accurate mass and retention time alignment. This was particularly important for increasing the quantitative coverage in samples with low protein amounts, in which ion chromatogram alignment increased the quantitative coverage by 125% (supplemental Fig. S2, supplemental Table S3).

Dynamic Range for Quantitation—The average nonnormalized ratios for ¹⁵N metabolic labeling showed linearity between mixing ratios of 1:10 and 10:1, whereas nonlinear behavior was observed for the higher or lower mixing ratios (Fig. 3A). There was no influence of total sample protein amount on the linear range of ¹⁵N metabolic quantitation. This is in agreement with earlier studies also observing a linear quantitative range of within 10-fold mixing ratios on an Orbitrap mass spectrometer (30).

For label-free quantitation, the protein amount was critical for the linear dynamic range (Fig. 3B). Low protein amounts displayed a larger linear range than high protein amounts. In samples with up to 15 μg of total protein, close to linear quantitation was possible even at very high ratios (dashed line in Fig. 3B). In general, the measured ion intensities increased proportionally to the supplied protein amount in the range between 0.2 μg and 10 μg. At higher protein amounts from 100 μg or higher, ion intensities became saturated and therefore the linear range of quantitation decreased (sigmoid curve in Fig. 3B).

FIG. 3. Measured and expected ratios. *A*, In metabolic labeling, saturation of quantitation occurs at mixing ratios greater than 10 or smaller than 0.1. *B*, Label-free quantitation at different total protein amounts. Large deviations occur at high total protein amounts.



Precision of Quantitation—To study the precision of quantitation in each method at the different mixing ratios and total protein amounts analyzed, we plotted the deviations of measured peptide abundance ratios from expected values as box-plots (Fig. 4). As the incorporation of the heavy label was estimated to 96.7 atom% (± 3) we did not account for the effect of incomplete labeling (33). For metabolic ¹⁵N labeling, in 1:1 ratios the distributions were symmetric and deviation from expected mixing ratio was rather low (Fig. 4A). Up to a mixing ratio of about 1:5 and 5:1 the ratio distribution was broader in label-free comparisons than in metabolic labeling (Fig. 4B). At high (1:10 and 10:1) and very high (1:100 and 100:1) mixing ratios, we observed an increasingly skewed ratio distribution for metabolic labeling, particularly in those samples containing high proportions of ¹⁵N-labeled protein. Although average deviation at mixing ratios of 1:10 and 10:1 in metabolic labeling was not different from label-free samples (Fig. 4C), in the 1:100 and 100:1 the label-free quantitation yielded higher precision compared with the ¹⁵N metabolic labeling (Fig. 4D).

A direct comparison of measured abundance ratios in label-free and in ¹⁵N metabolic labeling samples revealed that quantitative precision decreases with higher mixing ratios and with higher protein amounts. ¹⁵N metabolic-labeling was more precise than the label-free approach, with lower scatter at low mixing ratios up to 10-fold. Scatter around the expected ratio in these cases was higher for label-free quantitation (supplemental Fig. S4). However, for ¹⁵N metabolic labeling, a strong deviation from expected ratios was observed at high sample protein amount and at comparative ratios greater than 10-fold, and particularly with high proportion of ¹⁵N-labeled protein.

Influence of Peptide Characteristics in Quantitative Proteomics—Particularly in very high comparative ratios (Fig. 4D) we observed unequal distribution of peptides around the expected ratio in the ¹⁵N metabolically labeled mixtures. Peptide intensity had the strongest influence on the deviation from the expected ratio (Fig. 5A), with low intensity peptides showing the largest deviation. Furthermore, peptides with lower number of nitrogen atoms had a tendency for larger deviations

from expected ratios (Fig. 5B), whereas deviation from expected ratio was not dependent on mass to charge ratio or total peptide molecular weight. Peptide ion intensity depends on peptide abundance in the sample as well as the peptide ionization properties. In that respect, we found that peptides with higher numbers of nitrogen atoms or in general longer peptides usually resulted in higher ion intensities (Fig. 5C).

DISCUSSION

Proteome Coverage Depends on Experimental Setup, Total Protein Loading, and Mixing Ratio—The experimental setup will have limitations to the number of proteins that can efficiently be resolved on a column at a specific protein loading (34). For our standard setup using a single 100 mm C18-column and a 120 min separation on a linear gradient, we found the best peptide identification rate using between 20 μ g and 100 μ g of protein (supplemental Table S2, Fig. 2).

A main finding of our comparison of protein coverage, dynamic range and quantitative precision of ¹⁵N metabolic labeling and label-free quantitation was that in ¹⁵N metabolic labeling lowest numbers of identified and quantified proteins were yielded at a 1:1 mixture (Fig. 2). This was because of increased fragmentation of both labeled and unlabeled forms of the same peptide. This finding may have direct implications for experimental designs involving mixtures of labeled and unlabeled material. Although in our study the number of peptide pairs for quantification increased up to the 1:5 and 5:1 mixtures, it is important to mention that in our present experimental design the 1:2 and 2:1 samples had a large gap in the protein amounts investigated with total protein amount leaping from 15 μ g (10 μ g and 5 μ g) to 300 μ g (200 μ g and 100 μ g). The former protein amount is slightly below, whereas the latter is way above the optimal protein range for maximum peptide identifications on our LC-MS/MS setup as discussed above (34). Possibly, using mixing ratios deviating from the usually used 1:1 mixtures (e.g. 3:1 or 1:3) in biological experiments may already be advantageous with regards to total numbers of proteins quantified. Data normalization and identification of significant treatment-dependent alterations in pro-

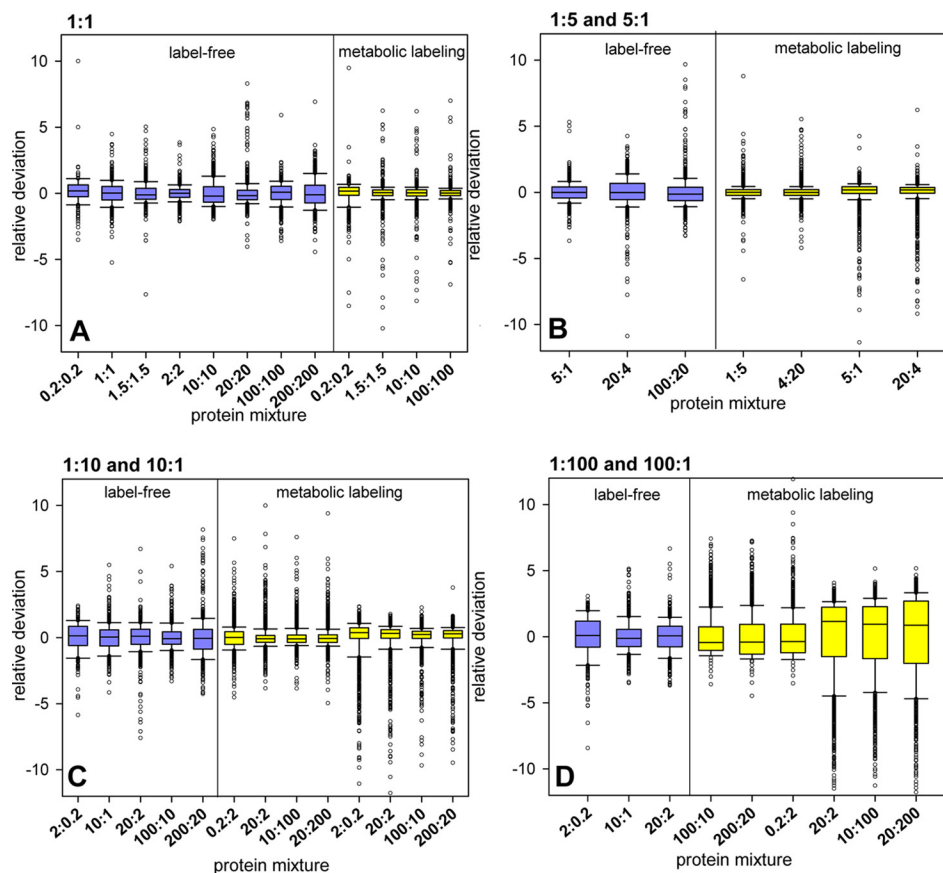


FIG. 4. Boxplot of the relative deviation from expected mixing ratio for metabolic labeling and label-free comparison at different total protein amounts. A, 1:1 mixtures. B, 1:5 and 5:1 mixtures. C, 1:10 and 10:1 mixtures. D, 1:100 and 100:1 mixtures.

tein abundance could still be carried out as described (31). In particular, if a reciprocal experimental design is used (35, 36), but also for use as a universal standard (24), significant treatment effects can efficiently be identified also in mixtures deviating from 1:1. The comparatively low efficiency of protein identification and quantitation in 1:1 mixtures observed here, may be less apparent if longer chromatographic gradients are being used leading to overall higher protein identifications (34). However, longer gradient times might result in a bottleneck in sample measurements in many laboratories. On the other hand, fragmentation of both isotope pairs can increase the confidence in peptide identifications, and thus may be beneficial particularly when protein modifications are analyzed. Particularly in mixtures with high proportions of ¹⁵N, the protein identifications can be reduced by formation of isotope cluster satellite peaks (33).

The ¹⁵N metabolic labeling method clearly outperformed the label free approach with regards to the number of quantified peptide pairs. This is clearly because of the inherent method characteristic of finding peptide pairs as co-eluting peaks with defined mass difference for quantitation rather than based on mass and elution time in cases in which only one of the peptides ions of the pair has been identified by MS/MS (reviewed in (22)). However, our estimation shows that

when retention time correlation is used in label free quantitation the number of quantified proteins increased and became similar to that in ¹⁵N metabolic labeling in which no retention time correlation was applied (supplemental Table S3). Because of practical reasons we studied the effect of retention time correlation using the MaxQuant software (26). As MaxQuant yielded more identifications than MSQuant (37) even without the use of matching between runs, these numbers could not be compared directly to the MSQuant results. Therefore, we focused on the percentage of change between the two settings. It is beyond the scope of this study to compare the performance of the two quantitation softwares, particularly because MaxQuant cannot be used for quantitation of ¹⁵N metabolically labeled samples. Of course, our estimation assumes that upon the performance of retention time correlation, both quantitation programs will identify a similar number of peptides based on the elution time and mass. Should retention time correlation be applied to metabolically labeled data, we expect that the number of quantified proteins would further increase if the total protein amount remains within the optimal settings for the LC-MS/MS system. For label-free quantitation, matching between retention times and mass is essential for high coverage of quantitation, particularly at high mixing ratios.

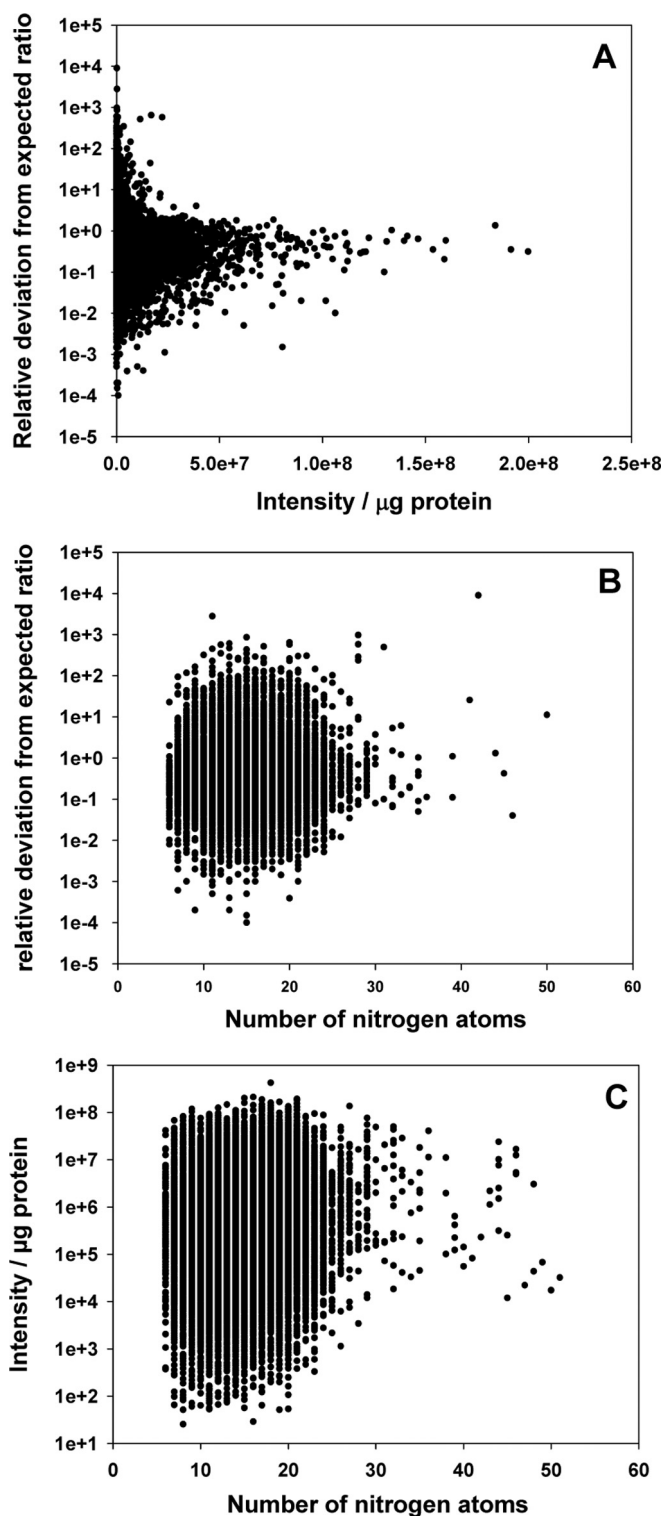


FIG. 5. The influence of peptide properties on deviation from expected ratios. A, Peptide intensity. B, Number of nitrogen atoms. C, Relationship between number of nitrogen atoms and peptide intensity.

Both Methods Show Linear Behavior for Two Orders of Magnitude, But the Label-free Quantitation Could be Extended to Four Orders of Magnitude with Low Protein Loading—Looking

at the dynamic range of these two methods it was interesting to find that the total protein amount in the sample has a strong influence on the linear range in the label-free approach, but no influence at all on the metabolic labeling. On one side this meant that the metabolic labeling was more robust regarding total protein loading, on the other hand it also showed that if lower total protein loadings were used with the label-free approach, the linear dynamic range could be extended up to four orders of magnitude. Nonlinear behavior in label-free quantitation at high protein amounts loaded onto the column could partly also be attributed to column overloading.

In case of ¹⁵N metabolic labeling, the saturation of the linear range was also dependent on whether the heavy or the light isotope represents the greater proportion in the sample. In practice, where a reciprocal labeling experimental design is followed (36), this needs to be considered more carefully. Particularly at high mixing ratios, proteins quantified with the ¹⁴N form as a more intense partner, display a larger linear range than proteins with ¹⁵N form as a more intense partner.

*Precision at Lower Mixing Ratios is Greater in Metabolic Labeling Approach, but at High Mixing Ratios it is Greater in Label-free Samples—*It has already been shown that the linear quantitation powers of the ¹⁵N metabolic labeling is good until the 1:10 and 10:1 mixing ratios (38). However, we were not aware of the stepwise decrease of precision from the 1:1 mixture to the 10:1 and 1:10 ratios in ¹⁵N metabolic labeling. Beyond a mixing ratio of 5:1 and 1:5 the scatter becomes similar to what we observed for label-free quantitation (Fig. 4). Gradually building up from the 5:1 reciprocal samples, this nonnormal distribution reaches the extreme in the very high mixing ratio. Especially in these very high mixing ratios, we observed a strong underestimation of the measured abundance ratios for many of the proteins. This nonequal distribution was particularly striking for cases in which the heavy sample was the predominant component of the mixture, which leads to the assumption that the heavy nitrogen labeled peptide ion and its characteristic isotopomer envelope could be, at least partially, responsible for this behavior (33, 39), particularly as average ¹⁵N incorporation only yielded 96.7 atom%. Incorrect precursor mass assignment (33) for ¹⁵N labeled precursors was shown to lead to incorrect quantitation and underestimation particularly at high mass ions.

*Peptide Intensity Has the Strongest Influence on the Deviation from the Expected Ratio for Both Methods, Closely Followed by the Number of Nitrogen Atoms Per Amino Acid—*The identification of the peptide properties that influence quantitation is of utmost importance, as it can result in increased confidence upon manual inspection of peptides or for the development of correction factors and error models. In both, samples from label-free quantitation and ¹⁵N-metabolic labeling, we found that on average peptides with low intensity had a strong deviation from the expected ratio (31). As the intensity among other factors will depend on total protein

loading, this explained the variations in standard deviations we found among the various total protein mixtures, resulting in the same ratio (e.g. Fig. 4C). We could furthermore link the number of nitrogen atoms per amino acid to the deviation from expected ratio, with proteins of high nitrogen content showing a tendency for smaller deviation from expected ratio. This in our opinion is the main explanation of the characteristic underestimation of the ^{15}N metabolic labeling ratios, especially in situations in which the labeled partner is the predominant component in the sample. We showed that the peptides with low deviation of ^{15}N to ^{14}N ratios had a tendency for higher ion intensity. There was a trend for these peptides to be longer and contain more nitrogen atoms. Although in agreement to previous studies we did observe about 10% less protein peptide identifications for fully ^{15}N labeled peptides, we did not observe a great difference in precursor mass accuracy. Possibly, because of strict mass accuracy filters in database search of 10 ppm, peptides with incorrect precursor assignment (33), did not end up in our result lists. In our observation, the main source for underestimation of ratios with high proportion of ^{15}N results from quantitation on the monoisotopic peak only. Particularly when metabolic labeling results in noncomplete ^{15}N -incorporation a number of satellite peaks also occur for each peptide. These additional peaks result in a decreased height for the fully labeled monoisotopic peak, which then can lead to underestimation of the ^{15}N -labeled peak intensity.

CONCLUSION

Our findings indicate that both methods under comparison, label-free quantitation and ^{15}N metabolic labeling have a number of advantages under certain experimental conditions and constraints. A summary of the performance of the two quantitation methods at the mixing ratios and protein amounts tested in this study is presented in Fig. 6. With this study we provide information helping investigators in deciding on the optimal experimental design for their purposes and for making optimal use of the method of choice by considering three major factors influencing quantitation quality, namely proteome coverage, dynamic range and quantitative precision. Small ratio differences were more precisely detected in ^{15}N metabolic labeling, whereas precision for large ratios was higher in label-free methods.

The label free strategy has the unsurpassed advantage of being applicable to all starting material, which is a limitation to the ^{15}N metabolic labeling particularly in plants. However under certain conditions the ^{15}N metabolic labeling provides greater quantitative precision, often at the cost of quantitative coverage, depending on mixing ratio and protein amount loaded. We suggest that nonequal mixing ratios could further increase the number of quantified proteins while maintaining high precision. This finding will potentially also be applicable to other labeling strategies, such as SILAC or iTRAQ. Additionally, ^{15}N metabolic labeling allows easier

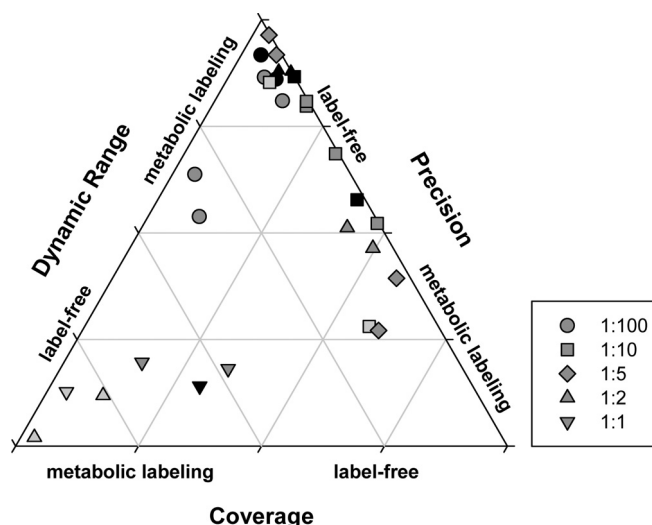


Fig. 6. Ternary plot to assess performance of quantitation by label-free method or ^{15}N -metabolic labeling based on proteome coverage, quantitative precision and dynamic range for different mixing ratios. Shadings of gray indicate increasing total protein loading: light gray less than 10 μg ; dark gray, 10–100 μg ; black, more than 100 μg protein.

data processing, as no complex normalization is required before peptide ratios are processed. On the other hand, the label free strategy, in combination with low protein loading allows the extension of the dynamic range for quantitation, which could be important for investigation of certain types of biological questions.

§ This article contains [supplemental Figs. S1 to S4 and Tables S1 to S3](#).

§ To whom correspondence should be addressed: Max-Planck Institute of Molecular Plant Physiology, Am Mühlenberg 1, 14476 Potsdam, Germany. Tel.: +493315678113; E-mail: WSchulze@mpimp-golm.mpg.de.

REFERENCES

- Fenn, J. B., Mann, M., Meng, C. K., Wong, S. F., and Whitehouse, C. M. (1989) Electrospray ionization for mass spectrometry of large biomolecules. *Science* **246**, 64–71
- Hillenkamp, F., and Karas, M. (1990) Mass spectrometry of peptides and proteins by matrix-assisted ultraviolet laser desorption/ionization. *Methods Enzymol.* **193**, 280–295
- Second, T. P., Blethrow, J. D., Schwartz, J. C., Merrihew, G. E., MacCoss, M. J., Swaney, D. L., Russell, J. D., Coon, J. J., and Zabrouskov, V. (2009) Dual-pressure linear ion trap mass spectrometer improving the analysis of complex protein mixtures. *Anal. Chem.* **81**, 7757–7765
- Olsen, J. V., de Godoy, L. M., Li, G., Macek, B., Mortensen, P., Pesch, R., Makarov, A., Lange, O., Horning, S., and Mann, M. (2005) Parts per million mass accuracy on an Orbitrap mass spectrometer via lock mass injection into a C-trap. *Mol. Cell. Proteomics* **4**, 2010–2021
- Gouw, J. W., Krijgsveld, J., and Heck, A. J. (2010) Quantitative proteomics by metabolic labeling of model organisms. *Mol. Cell. Proteomics* **9**, 11–24
- Bantscheff, M., Schirle, M., Sweetman, G., Rick, J., and Kuster, B. (2007) Quantitative mass spectrometry in proteomics: a critical review. *Anal. Bioanal. Chem.* **389**, 1017–1031
- Schulze, W. X., and Usadel, B. (2010) Quantitation in mass-spectrometry-based proteomics. *Annu. Rev. Plant Biol.* **61**, 491–516
- Domon, B., and Aebersold, R. (2010) Options and considerations when

- selecting a quantitative proteomics strategy. *Nat. Biotechnol.* **28**, 710–721
9. Ong, S. E., Blagoev, B., Kratchmarova, I., Kristensen, D. B., Steen, H., Pandey, A., and Mann, M. (2002) Stable isotope labeling by amino acids in cell culture, SILAC, as a simple and accurate approach to expression proteomics. *Mol. Cell. Proteomics* **1**, 376–386
10. Engelsberger, W. R., Erban, A., Kopka, J., and Schulze, W. X. (2006) Metabolic labeling of plant cell cultures with K₁₅NO₃ as a tool for quantitative analysis of proteins and metabolites. *Plant Methods* **2**, 1–11
11. Cooper, B., Feng, J., and Garrett, W. M. (2010) Relative, label-free protein quantitation: Spectral counting error statistics from nine replicate MudPIT samples. *J. Am. Soc. Mass Spectrom.* **21**, 1534–1546
12. Griffin, N. M., Yu, J., Long, F., Oh, P., Shore, S., Li, Y., Koziol, J. A., and Schnitzer, J. E. (2010) Label-free, normalized quantification of complex mass spectrometry data for proteomic analysis. *Nat. Biotechnol.* **28**, 83–89
13. Old, W. M., Meyer-Arendt, K., Aveline-Wolf, L., Pierce, K. G., Mendoza, A., Sevinsky, J. R., Resing, K. A., and Ahn, N. G. (2005) Comparison of label-free methods for quantifying human proteins by shotgun proteomics. *Mol. Cell. Proteomics* **4**, 1487–1502
14. Wong, J. W., and Cagney, G. (2010) An overview of label-free quantitation methods in proteomics by mass spectrometry. *Methods Mol. Biol.* **604**, 273–283
15. Zhang, B., VerBerkmoes, N. C., Langston, M. A., Uberbacher, E., Hettich, R. L., and Samatova, N. F. (2006) Detecting differential and correlated protein expression in label-free shotgun proteomics. *J. Proteome Res.* **5**, 2909–2918
16. Hoehenwarter, W., van Dongen, J. T., Wienkoop, S., Hummel, J., Erban, A., Steinfath, M., Sulpice, R., Regierer, B., Kopka, J., Geigenberger, P., and Weckwerth, W. (2008) A rapid approach for phenotype-screening and database independent detection of cSNP/protein polymorphism using mass accuracy precursor alignment. *Proteomics* **8**, 4214–4225
17. Bantscheff, M., Boesche, M., Eberhard, D., Matthieson, T., Sweetman, G., and Kuster, B. (2008) Robust and sensitive iTRAQ quantification on an LTQ Orbitrap mass spectrometer. *Mol. Cell. Proteomics* **7**, 1702–1713
18. Turck, C. W., Falick, A. M., Kowalak, J. A., Lane, W. S., Lilley, K. S., Phinney, B. S., Weintraub, S. T., Witkowska, H. E., and Yates, N. A. (2007) The Association of Biomolecular Resource Facilities Proteomics Research Group 2006 study: relative protein quantitation. *Mol. Cell. Proteomics* **6**, 1291–1298
19. Wu, W. W., Wang, G., Baek, S. J., and Shen, R. F. (2006) Comparative study of three proteomic quantitative methods, DIGE, cICAT, and iTRAQ, using 2D Gel- or LC-MALDI TOF/TOF. *J. Proteome Res.* **5**, 651–658
20. Collier, T. S., Randall, S. M., Sarkar, P., Rao, B. M., Dean, R. A., and Muddiman, D. C. (2011) Comparison of stable-isotope labeling with amino acids in cell culture and spectral counting for relative quantification of protein expression. *Rapid Commun. Mass Spectrom.* **25**, 2524–2532
21. Piques, M., Schulze, W. X., Höhne, M., Usadel, B., Gibon, Y., Rohwer, J., and Stitt, M. (2009) Ribosome and transcript copy numbers, polysome occupancy and enzyme dynamics in Arabidopsis. *Mol. Syst. Biol.* **5**, E1–E17
22. Arsova, B., Kierszniowska, S., and Schulze, W. X. (2012) The use of heavy nitrogen in quantitative proteomics experiments in plants. *Trends Plant Sci.* **17**, 102–112
23. Sato, T., Ishihama, Y., and Oda, Y. (2007) Quantitative proteomics of mouse brain and specific protein-interaction studies using stable isotope labeling. *Methods Mol. Biol.* **359**, 53–70
24. Mühlhaus, T., Weiss, J., Hemme, D., Sommer, F., and Schroda, M. (2011) Quantitative shotgun proteomics using a uniform ¹⁵N-labeled standard to monitor proteome dynamics in time course experiments reveals new insights into the heat stress response of *Chlamydomonas reinhardtii*. *Mol. Cell. Proteomics* **10**, 10.1074/mcp.M110.004739
25. Schaff, J. E., Mbeunkui, F., Blackburn, K., Bird, D. M., and Goshe, M. B. (2008) SILIP: a novel stable isotope labeling method for in planta quantitative proteomic analysis. *Plant J.* **56**, 840–854
26. Cox, J., and Mann, M. (2008) MaxQuant enables high peptide identification rates, individualized p.p.b.-range mass accuracies and proteome-wide protein quantification. *Nat. Biotechnol.* **26**, 1367–1372
27. Cox, J., Matic, I., Hilger, M., Nagaraj, N., Selbach, M., Olsen, J. V., and Mann, M. (2009) A practical guide to the MaxQuant computational platform for SILAC-based quantitative proteomics. *Nat. Protoc.* **4**, 698–705
28. Andersen, J. S., Lyon, C. E., Fox, A. H., Leung, A. K., Lam, Y. W., Steen, H., Mann, M., and Lamond, A. I. (2002) Direct proteomic analysis of the human nucleolus. *Curr. Biol.* **12**, 1–11
29. Andersen, J. S., Lam, Y. W., Leung, A. K., Ong, S. E., Lyon, C. E., Lamond, A. I., and Mann, M. (2005) Nucleolar proteome dynamics. *Nature* **433**, 77–83
30. Venable, J. D., Wohlschlegel, J., McClatchy, D. B., Park, S. K., and Yates, J. R. 3rd (2007) Relative quantification of stable isotope labeled peptides using a linear ion trap-Orbitrap hybrid mass spectrometer. *Anal. Chem.* **79**, 3056–3064
31. Ting, L., Cowley, M. J., Hoon, S. L., Guilhaus, M., Raftery, M. J., and Cavicchioli, R. (2009) Normalization and statistical analysis of quantitative proteomics data generated by metabolic labeling. *Mol. Cell. Proteomics* **8**, 2227–2242
32. Foster, L. J., de Hoog, C. L., Zhang, Y., Zhang, Y., Xie, X., Mootha, V. K., and Mann, M. (2006) A mammalian organelle map by protein correlation profiling. *Cell* **125**, 187–199
33. Gouw, J. W., Tops, B. B., Mortensen, P., Heck, A. J., and Krijgsveld, J. (2008) Optimizing identification and quantitation of ¹⁵N-labeled proteins in comparative proteomics. *Anal. Chem.* **80**, 7796–7803
34. Thakur, S. S., Geiger, T., Chatterjee, B., Bandilla, P., Fröhlich, F., Cox, J., and Mann, M. (2011) Deep and highly sensitive proteome coverage by LC-MS/MS without prefractionation. *Mol. Cell. Proteomics* **10**, 10.1074/mcp.M110.003699
35. Kierszniowska, S., Seiwert, B., and Schulze, W. X. (2009) Definition of Arabidopsis sterol-rich membrane microdomains by differential treatment with methyl- β -cyclodextrin and quantitative proteomics. *Mol. Cell. Proteomics* **8**, 612–623
36. Kierszniowska, S., Walther, D., and Schulze, W. X. (2009) Ratio-dependent significance thresholds in reciprocal ¹⁵N-labeling experiments as a robust tool in detection candidate proteins responding to biological treatment. *Proteomics* **9**, 1916–1924
37. Mortensen, P., Gouw, J. W., Olsen, J. V., Ong, S. E., Rigbolt, K. T., Bunkenborg, J., Cox, J., Foster, L. J., Heck, A. J., Blagoev, B., Andersen, J. S., and Mann, M. (2010) MSQuant, an open source platform for mass spectrometry-based quantitative proteomics. *J. Proteome Res.* **9**, 393–403
38. Venable, J. D., Dong, M. Q., Wohlschlegel, J., Dillin, A., and Yates, J. R. I. (2004) Automated approach for quantitative analysis of complex peptide mixtures from tandem mass spectra. *Nat. Methods* **1**, 39–45
39. Nelson, C. J., Huttlin, E. L., Hegeman, A. D., Harms, A. C., and Sussman, M. R. (2007) Implications of ¹⁵N-metabolic labeling for automated peptide identification in Arabidopsis thaliana. *Proteomics* **7**, 1279–1292