

Osmotic stress signaling via protein kinases

Hiroaki Fujii · Jian-Kang Zhu

Received: 5 July 2012 / Revised: 9 July 2012 / Accepted: 9 July 2012 / Published online: 25 July 2012
© Springer Basel AG 2012

Abstract Plants face various kinds of environmental stresses, including drought, salinity, and low temperature, which cause osmotic stress. An understanding of the plant signaling pathways that respond to osmotic stress is important for both basic biology and agriculture. In this review, we summarize recent investigations concerning the SNF1-related protein kinase (SnRK) 2 kinase family, which play central roles in osmotic stress responses. SnRK2s are activated by osmotic stress, and a mutant lacking SnRK2s is hypersensitive to osmotic stress. Many questions remain about the signaling pathway upstream and downstream of SnRK2s. Because some SnRK2s also functions in the abscisic acid (ABA) signaling pathway, which has recently been well clarified, study of SnRK2s in ABA signaling can provide clues regarding their roles in osmotic stress signaling.

Keywords Plant · Osmotic stress · SnRK2 · Kinase · Phosphorylation

H. Fujii
Molecular Plant Biology Unit, Department of Biochemistry and Food Chemistry, University of Turku, 20014 Turku, Finland

J.-K. Zhu
Department of Horticulture and Landscape Architecture, Purdue University, West Lafayette, IN, USA

H. Fujii (✉)
Tykistökatu 6A, 6th floor, 20520 Turku, Finland
e-mail: hiroaki.fujii@utu.fi

A brief introduction to osmotic stress and kinases

Because of their immobility, plants must adjust to their environment. Various environmental factors limit plant productivity, and drought and soil salinity in particular are increasingly important problems in agriculture [1]. Drought and soil salinity cause osmotic stress. Thus, an understanding of how plants perceive and respond to osmotic stress is important for not only basic biology but also for agriculture.

By definition, changes in the environment occur outside of cells, and the information concerning the change must be transferred to the cellular machineries within the cell, such as the nucleus, where gene expression is regulated. One of the major mechanisms for the transmission of signals is protein phosphorylation. Osmotic stress induces protein phosphorylation [2].

An increase in phosphorylation can result from several mechanisms. Because mRNA is relatively easy to quantify, many kinases have been found to have increased mRNA levels in response to osmotic stress [3, 4]. As a primary response to osmotic stress, however, there must be a more direct and rapid signaling before activation of gene transcription and that signaling evidently involves kinase activity: osmotic stress increases the enzymatic activity of some kinases, which are referred to as osmotic stress-activated kinases.

Osmotic stress-activated and ABA-activated kinases: SnRK2s

It is difficult to measure the activity of each kinase *in vivo*. Fortunately, the activity of some kinases is determined by post-translational modification that is retained even after

several purification steps. For example, when phosphorylation of a kinase increases its activity, the activated status is retained even after SDS treatment. Thus, activation of some kinases is detected via in-gel kinase assay following SDS-PAGE.

According to in-gel kinase assays with myelin basic protein (MBP) or histone as substrates, several kinases in crude extracts from *Arabidopsis* seedlings or cell suspensions or tobacco cell suspensions are activated under hyperosmotic stress conditions [5, 6]. Their mobility in SDS-PAGE is from 35 to 48 kD. Protein sequencing revealed that one of these kinases belongs to the SNF1-related protein kinase (SnRK) 2 family [5].

SnRK2 is a plant-specific protein kinase family related to yeast SNF1; the SnRK2 family has ten members (SnRK2.1-2.10) in *Arabidopsis* and ten members (SAPK1-10) in *Oryza sativa* [7]. The pull-down fraction from *Arabidopsis* crude extract obtained with anti-SnRK2 antibody contained osmotic stress-activated kinases [6]. Ectopic expression studies also revealed that SnRK2s are activated by hyperosmotic treatment. Soybean SPK1 and SPK2 are activated in yeast that was subjected to hyperosmotic stress [8]. In an *Arabidopsis* protoplast system, almost all SnRK2s, except SnRK2.9, are activated by mannitol as well as by NaCl [6]. In T87 cells, green fluorescent protein (GFP)-fused SnRK2.1 (SRK2G), SnRK2.2 (SRK2D), SnRK2.3 (SRK2I), SnRK2.6 (SRK2E), or SnRK2.7 (SRK2F) are activated by hyperosmolality [9]. In rice protoplasts, all ten SnRK2s are activated by NaCl [10]. Osmotic stress-activated bands were not detected in an in-gel kinase assay using an *Arabidopsis* *snrk2* decuple mutant lacking all SnRK2s [11]. Thus, SnRK2s are osmotic stress-activated kinases.

Interestingly, some kinases in the SnRK2 family have also been identified in ABA signaling as described in the next section. SnRK2.2, 2.3, and 2.6 are strongly activated and SnRK2.7 and 2.8 are weakly activated by ABA in *Arabidopsis* [6, 12, 13], whereas SAPK8, 9, and 10 are activated by ABA in rice [10]. In the *snrk2.2/2.3/2.6* triple-mutant subjected to in-gel kinase assay, the ABA-activated bands disappear [14, 15].

Observation of mutants and transgenic plants revealed that SnRK2s have in vivo importance in osmotic stress as well as in ABA signaling described in the next section. After seedlings were incubated on a paper towel for 45 min, the root growth of *snrk2.8* was significantly more inhibited relative to the wild-type [16], although drought tolerance in soil was similar among the wild-type, *snrk2.7*, *snrk2.8*, and the *snrk2.7/2.8* double-mutant [17]. Because the SnRK2 family has ten members, redundancy may mask the severe defects of single mutants. This problem was solved by the production of a decuple mutant, which lacks all ten members of SnRK2. The *snrk2* decuple-mutant

grows poorly on hyperosmotic media but grows normally on half-strength Murashige–Skoog (MS) medium [11]. Stress-induced responses such as gene expression are also significantly affected in these mutants.

Plants overexpressing a SnRK2 show improved growth. *Arabidopsis* overexpressing SnRK2.8, for example, are larger than the control even in soil without intentional stress, suggesting that SnRK2.8 is involved in metabolic processes [18]. Overexpression lines of SnRK2.6 contain more sugar and grow larger and produce more lateral branches than the wild-type [19]. Similarly, overexpression of TaSnRK2.4, TaSnRK2.7, or TaSnRK2.8 enhances *Arabidopsis* growth [20–22]. A phylogenetic tree of these kinases is shown in Fig. 1 [23].

Growth and survival under stress are greater for these overexpression lines than for the wild-type. For example, survival under drought was increased in plants overexpressing SnRK2.8 [16]. Similarly, overexpression of TaW55a, TaSnRK2.4, TaSnRK2.7, TaSnRK2.8, or maize

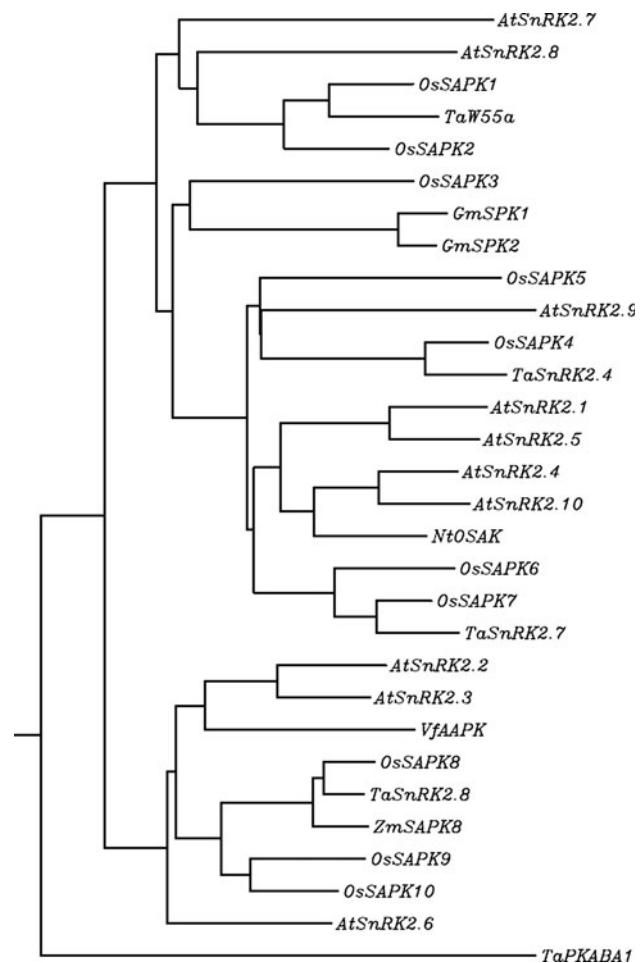


Fig. 1 Phylogenetic tree of SnRK2s in *Arabidopsis thaliana*, rice (*Oryza sativa*), tobacco (*Nicotiana tabacum*), wheat (*Triticum aestivum* L.), maize (*Zea mays*), faba bean (*Vicia faba*), and soybean (*Glycine max*) indicated in the text

ZmSAPK8 enhanced the tolerance of *Arabidopsis* to drought, 2 % PEG, 5 % glycerol, salt, and cold [20–22, 24, 25]. Because expressions of stress-regulated genes are also enhanced in these overexpression lines under non-stressed conditions, these SnRK2s may affect not only growth rate but also stress responses. These kinases are also important in plants other than *Arabidopsis*. Rice SAPK4 can confer salt tolerance to rice but does not alter plant growth in the absence of stress [26].

ABA pathway

Recent research indicates that SnRK2s are key signal transducers in the ABA pathway. The first report of SnRK2 involvement in the ABA pathway was for the wheat PKABA1, which is induced by ABA at the transcript level [27]. SnRK2-type kinases are not only induced at the transcript level but are also activated by ABA. In *Vicia faba*, ABA activates the SnRK2 member AAPK in guard cells. The dominant negative form of AAPK disrupts ABA-induced stomatal closure [28], and the *snrk2.6 (ost1)* mutant in *Arabidopsis* is defective in ABA-induced stomatal closure [12, 13]. In addition to their involvement in ABA signaling associated with stomatal regulation, SnRK2s also play important roles in the ABA signaling associated with seed germination. A *snrk2.2/2.3* double-mutant is more insensitive to ABA than the wild-type or *snrk2.2* or *snrk2.3* single-mutants [29]. Finally, all examined ABA responses are eliminated in a *snrk2.2/2.3/2.6* triple-mutant [14, 15, 30]. Thus, SnRK2.2, 2.3, and 2.6 play essential roles in ABA signaling in guard cell regulation, seed germination, and seedling growth.

Identification of ABA receptors of the PYR/PYL family (also known as RCAR) reveals that SnRK2s are key transducers just after ABA is perceived by cells. PYR/PYLs are START domain proteins that bind to ABA. PYR/PYLs inhibit protein phosphatase 2C (PP2C) in an ABA-dependent manner [31, 32]. ABA-responsive SnRK2s are usually suppressed by PP2C in the absence of ABA. In the presence of ABA, the inhibition of PP2C by PYR/PYLs releases SnRK2s from suppression by PP2C [33–35]. Recent structural analysis revealed marked similarity in PP2C recognition by SnRK2 and ABA-bound PYR/PYLs [36]. As a result, the SnRK2s are partially activated and can autophosphorylate, reaching full activation [37]. Active SnRK2s phosphorylate substrate proteins such as the ABF family of transcription factors. This entire pathway from the perception of phytohormone ABA to phosphorylation of a transcription factor can be reconstituted *in vitro* with recombinant proteins, indicating that ABA, PYR/PYL, PP2C, SnRK2, and ABF are the major components that are sufficient for the pathway [35].

In other words, PYR-PP2C-SnRK2s are core signaling components, although many other factors also affect the pathway.

Regulation of SnRK2s

Because SnRK2s have the important functions described above, their activity must be regulated properly. Some regulatory mechanisms have been described for SnRK2s. SnRK2s can be classified as ABA-responsive ones and ABA-unresponsive ones. Note that ABA-responsive SnRK2s are also activated by osmotic stress [6]. Moreover, in the *abi1-1* mutant, in which the ABA pathway is inhibited, SnRK2.6 is still activated by osmotic stress but not by ABA [9].

Conserved domains

Besides having a conventional kinase domain, SnRK2s have at least two conserved domains in their C-terminal regions. Chimeric proteins of SAPK2 and SAPK8 revealed that ABA-responsiveness is determined by the C-terminal part of SAPKs [10]. The C-terminal part has two distinct domains. Domain I is conserved within all SnRK2s, whereas domain II is conserved among ABA-responsive SnRK2s. Domain II binds to PP2C, and mutated SnRK2.6 protein lacking the domain II cannot complement the “quick water loss” phenotype of *snrk2.6*, indicating that domain II is important for ABA-responsiveness [9].

Phosphorylation of SnRK2s

SnRK2 activity can be detected by in-gel kinase assay after SDS-PAGE [5], indicating that the kinase remains activated during SDS treatment. Many reports have demonstrated that phosphorylation is important for the activation of SnRK2s. Phosphatase treatment inhibited activation of NtOSAK and rice SAPK1 and SAPK2 [5, 10]. The use of phospho-specific dye revealed that NtOSAK is phosphorylated after osmotic treatment [38].

Several phosphorylation sites have been identified. The best-characterized one is Ser175 of SnRK2.6 [33–35, 39], which is a common phosphorylation site among various kinases and which is frequently related to their activation. Similar phosphorylation is also found at a Ser158 of NtOSAK [38] and Ser158 of SnRK2.10 [40]. During ABA signaling, Ser175 in SnRK2.6 is a key phosphorylation site. Without ABA, PP2C can dephosphorylate the Ser175 of SnRK2.6, resulting in the deactivation of SnRK2.6 [33–35]. When ABA binds to PYR/PYLs, PYR/PYLs inhibit PP2C and release SnRK2s from the inhibition. Quantitative analysis confirmed that the phosphorylation on the site is

increased by ABA treatment *in vivo* [41]. Phosphorylation on the site is also increased by osmotic stress [38, 40].

Mutational analysis, in which a phosphorylation target site is changed to Ala, revealed that these sites are important for SnRK2 function. When purified from *E. coli*, recombinant proteins with this mutation have little activity [38, 39]. The mutated SnRK2s are not functional *in vivo* since they cannot complement their respective mutants [10, 38, 39, 42]. The acidic amino acid Asp or Glu can often mimic phosphorylated ser/thr or tyr in several kinases, and changing the phosphorylation site to Asp or Glu often results in production of a constitutively active kinase [43, 44]. However, the mimicking mutations in SnRK2s do not lead to constitutively active protein kinases. In fact, the mutation disrupts even normal activity. When Ser158 of SAPK2 is changed to Asp, the mutant kinase loses activity in rice protoplasts [10]. The S158E mutant of NtOSAK lost activity in tobacco protoplasts as did the S175D mutant of SnRK2.6 or the S158D mutant of SnRK2.10 [40]. Various results were obtained with recombinant proteins from *E. coli*. While the S175D mutant of 10xHis-SnRK2.6 lost activity [39], the S158E mutant of GST-NtOSAK retained activity [38]. These results indicate that phosphorylation of these sites is important not only because it increases the negative charge. It is possible that phosphorylation is important for protein localization or conformational changes.

According to structural study, ABA-responsive SnRK2.6 can autophosphorylate S175 as well as T176 of SnRK2.6 if it is released from PP2C inhibition as described above [37]. This site is autophosphorylated in recombinant SnRK2.6 and SnRK2.8 purified from *E. coli* [18, 39]. Thus, in the ABA pathway, autophosphorylation may be enough for the full activation. The mechanism regulating the phosphorylation on Ser175 of SnRK2.6 in osmotic stress pathway, however, remains unclear. It is possible that there is an upstream kinase. Osmotic signaling may use a different mechanism from the ABA signaling to activate the SnRK2s. During osmotic stress, the kinase inhibitor staurosporine does not inhibit SnRK2 activation but does inhibit SnRK2 activity in *Arabidopsis* cells. This result indicates that activation of SnRK2s is mediated by a staurosporine-resistant kinase, which is not SnRK2 itself [42]. The mechanism regulating the phosphorylation requires further investigation.

Besides S175 of SnRK2.6, other phosphorylation sites in the activation loop include Ser154 of NtOSAK in NaCl-treated tobacco BY-2 cells [38] and S171 of SnRK2.6 and Ser154 of SnRK2.10 in ABA- and osmotic stress-treated *Arabidopsis* cells [33, 40]. In addition, mass spectrometry has detected phosphorylation at Ser166, Ser167, Ser171, Ser175, or Thr176 of SnRK2.6 in ABA-treated *Arabidopsis* [33]. The importance of these sites in the activation loop for kinase function is unclear. Unlike the Ser158A mutant, the S154A mutant of recombinant NtOSAK purified from

E. coli has kinase activity. On the other hand, the S154E mutant of NtOSAK lost activity in tobacco protoplasts, and neither S171D form of SnRK2.6 nor S154D form of SnRK2.10 could be activated in *Arabidopsis* protoplasts [40], indicating that these sites are important for activation *in planta*. When Ser159 or Thr162 of SAPK2 is changed to Asp, the mutant kinase lost activity in rice protoplasts [10]. In contrast, the T176A mutant of SnRK2.6 can complement *snrk2.6* in terms of the low temperature phenotype [39]. Mutation on these sites may affect protein conformation or impair binding to another protein or proper localization.

In addition to being phosphorylated in the activation loop, Ser7, Ser18, Ser29, and Ser43 in recombinant SnRK2.6 purified from *E. coli* are phosphorylated *in vitro* [39]. Mutated SnRK2.6 on these sites except for Ser43 cannot complement the low temperature phenotype of *snrk2.6* leaves, although the recombinant proteins have kinase activity. Interestingly, the Ser43-to-Ala mutation causes the protein to be constitutively active without ABA [39]. Additionally, Ser12 of SnRK2.8 was autophosphorylated in recombinant SnRK2.8 [18]. In *Arabidopsis* protoplasts, however, osmotic stress-induced and ABA-induced phosphorylation is rarely detected in the S171A and S175A double-mutated form of SnRK2.6 or in the S154A and S158A double-mutated form of SnRK2.10 [40]. These sites outside the activation loop may not be phosphorylated *in vivo* or the phosphorylation may need the kinase activity of SnRK2 itself.

Intermolecular regulation

The best-characterized binding partners of SnRK2s are clade A PP2Cs such as ABI1 and ABI2. The PP2Cs bind to the C-terminal domain of ABA-responsive SnRK2s [9] and dephosphorylate the SnRK2s as described above [33–35]. Still, the role of PP2Cs in the osmotic stress pathway remains obscure. Because ABA-responsive SnRK2s, which are suppressed by PP2Cs in the absence of ABA, are also activated by osmotic stress, there must be a mechanism to overcome the suppression by PP2Cs in osmotic stress signaling. On the other hand, one of the ABA-unresponsive SnRK2s, SnRK2.10 (SRK2B), did not bind to PP2Cs in a yeast two-hybrid assay [33], suggesting that PP2C is not involved in osmotic stress signaling. This inference could be wrong, however, because weak binding, such as that between SnRK2.6 and ABI2, is not always detected in the yeast two-hybrid assay [9].

Another identified regulator of SnRK2s is the SnRK2-interacting Calcium Sensor (SCS). Large-scale yeast two-hybrid screening with rice protein kinases identified two calcium-binding EF-hand proteins (Os03g14590, Os10g09850) as binding partners of SAPKs [45]. In independent

yeast two-hybrid screening, NtOSAK binds to NpSCS [46]. The binding was confirmed using an in vitro binding assay with recombinant proteins and a bimolecular fluorescence complementation assay in BY2 cells. *Arabidopsis* has a homolog of SCS (At4G38810; AtSCS) that binds to SnRK2s. Conformation of AtSCS is changed in the presence or absence of Ca^{2+} , while binding to SnRK2s is not affected by Ca^{2+} . Interestingly, an in vitro kinase assay shows that SCS inhibits the kinase activity of all examined SnRK2s (NtOSAK, SnRK2.4, SnRK2.6, and SnRK2.8) in the presence but not absence of Ca^{2+} , indicating that SCS is a Ca^{2+} -dependent negative regulator of SnRK2s [46]. In fact, the *scs* mutant shows an ABA-hypersensitive phenotype during germination, suggesting that SCS suppresses the activity of SnRK2s in ABA signaling. The role of Ca^{2+} in the ABA pathway has been reported [47]. These results indicate the possibility that the part of Ca^{2+} function in the ABA pathway may involve SCS inhibition of SnRK2 activity.

Substrates of SnRK2s

In the ABA pathway, members of the ABA-responsive element (ABRE)-binding factors (ABFs; also referred to as AREBs) family are well-characterized substrates of SnRK2s. ABFs are among the most important transcription factors in ABA signaling. ABFs bind to the ABRE, which is a conserved *cis*-element in the promoters of many ABA-induced genes, and activate transcription [48–51]. Activation of ABFs requires phosphorylation [50, 52, 53]. Several reports showed that ABA-responsive SnRK2s can directly phosphorylate ABFs. Wheat PKABA1 phosphorylates TaABF [54]. Rice SAPK8, SAPK9, and SAPK10 phosphorylate TRAB1 [55]. An in-gel kinase assay showed that SnRK2.2, SnRK2.3, and SnRK2.6 phosphorylated GST-fused ABF2, ABF4, and ABI5 [29, 50, 53]. Co-overexpression of PKABA1 and ABI5 induced phosphorylation of ABI5 in vivo, resulting in inhibition of seed germination [56]. Thus, SnRK2s regulate ABA-responsive gene transcription by phosphorylating ABFs.

An S-type anion channel, SLAC1, is another important substrate of SnRK2s in the ABA pathway. SLAC1 is expressed in guard cells and is essential for stomatal closure in response to various factors such as ABA and CO_2 [57, 58]. SnRK2.6 phosphorylates SLAC1 in vitro [59, 60]. The ion channel activity of SLAC1 is activated when SnRK2.6 is co-expressed. This activation is canceled when PP2C is also expressed. In addition, the K^+ channel KAT1 is also a target of SnRK2.6 [61]. ABA- or high salt-activated SnRK2.6 purified from T87 cells can phosphorylate the C-terminal region of KAT1. Thr306 and Thr398 are the phosphorylation sites. Point mutations on these sites reduce

K^+ channel activity. These results indicate that, in addition to being key regulators for transcription, SnRK2s are also important regulators of ion channels.

SnRK2.6 also phosphorylates NADPH oxidase; recombinant SnRK2.6 phosphorylates the N-terminal domain of AtrdohF [62]. LC-MS/MS data showed that Ser174 and Ser13 are phosphorylated. Because SnRK2.6 acts upstream of reactive oxygen species in the ABA response of guard cells [12], these results suggest that SnRK2.6 regulates NADPH oxidase through phosphorylation.

Besides the ABA pathway, some substrates have also been identified. Soybean SPK1 and SPK2 phosphorylate Ssh1p, a homolog of a phosphatidylinositol transfer protein whose phosphorylation is induced by osmotic stress. Because Ssh1p enhances the activities of a plant phosphatidylinositol 3-kinase and phosphatidylinositol 4-kinase, this signaling might regulate synthesis of phosphoinositides [8].

The use of a phosphoprotein-specific dye indicated that phosphorylation is lost in some proteins in the *snrk2.8* mutant [18]. Among them, 14-3-3s, Glyoxylase I, Adenosine kinase I, Ribose 5-phosphate isomerase, and 60S acidic ribosomal protein P2 were phosphorylated by SnRK2.8 in vitro. The phosphorylation enhanced glyoxalase activity, suggesting that SnRK2.8 can regulate Glyoxylase I in vivo.

Vlad et al. [63] used peptide array screening to determine the phosphorylation preferences of SnRK2.10. The main target of SnRK2.10 is the LXRXXS/T motif and according to sequence database, dehydrins have this motif. In vitro assay showed that SnRK2.10 can phosphorylate dehydrins. This motif matches some phosphorylation sites of ABFs and AtrbohF but not sites of KAT1. Although information regarding the sequences of kinase targets in vitro is valuable, in vivo regulation is likely more complicated.

Other protein kinases involved in osmotic stress

Other osmotic stress-activated protein kinases in addition to SnRK2s have been reported. Because histidine kinases function as osmosensors and activate the Hog1 mitogen-activated protein kinase (MAPK) pathway in yeasts [64], histidine kinases have been considered to be candidate osmosensors in plants. *Arabidopsis* histidine kinase AHK1 (ATHK1), AHK2, AHK3, or Cre1 can complement a yeast histidine kinase mutant, indicating that these plant kinases can act as osmosensors in yeasts [65–67]. In plants, transgenic *Arabidopsis* overexpressing AHK1 has increased drought tolerance, whereas an *ahk1* mutant is more sensitive to drought [67]. Interestingly, a mutant lacking *ahk2*, *ahk3*, and *cre1* histidine kinases shows increased drought tolerance, indicating that these kinases are negative regulators. AHK1 might work as a positive regulator of ABA signaling rather than as an osmosensor, because ABA sensitivity is

affected in these plants [67]. Thus, the osmosensing pathways are different in *Arabidopsis* and yeasts.

Several MAPKs in plants are activated by hyperosmotic stress. In alfalfa cells, a 46-kD MAP kinase named SIMK became activated in response to moderate but not strong (>750 mM NaCl) hyperosmotic stress [68]. Tobacco SIPK is activated by hyperosmolarity [5, 69], and activation of *Arabidopsis* MPK4 and MPK6 were also reported [70]. On the other hand, MPK4, MPK3, and MPK6 are activated by hypoosmolarity but not by hyperosmolarity in cell suspensions. In a *mpk4* mutant, hyperosmolarity-induced *rab18* expression is enhanced, indicating a negative role of MPK4 in hyperosmotic signaling [71, 72]. Overexpression of cotton GhMPK2 or maize ZmMKK4 confers tolerance to osmotic stress in tobacco [25, 73]. The relationship between the histidine kinases and these MAPKs remains unclear.

Involvement of some calcium-dependent protein kinases (CDPK) in osmotic stress signaling has also been reported. Osmotic stress activates CPK21, but a *cpk21* mutant has increased tolerance to hyperosmolarity, suggesting a negative role of CPK21 in osmotic stress signaling [74]. The constitutively active mutants of CDPK1 and CDPK1a activate a stress-inducible promoter [75]. Overexpression of OsCDPK7 in rice or AtCPK6 in *Arabidopsis* increases drought tolerance although osmotic stress tolerance did not differ between the wild-type and a *cpk6* mutant [76, 77]. Several MAPKs and CDPKs are involved in ABA signaling [78–84] but how they are connected to the PYL-PP2C-SnRK2 pathway is unclear.

Future perspectives

Much remains to be learned about the role of SnRK2s in osmotic stress signaling. Although phosphorylation of SnRK2s is clearly important, a kinase regulating the phosphorylation has not yet been identified. It is not known whether autophosphorylation is sufficient to activate the kinases in vivo. If autophosphorylation is sufficient, it is unclear why ABA-unresponsive SnRK2s are not activated under control condition because none of the PP2Cs so far examined binds to SnRK2.10 in yeast two-hybrid assay [33]. Some other mechanisms may exist to suppress ABA-unresponsive SnRK2s under control conditions.

Because ABA-responsive SnRK2s are suppressed by PP2Cs, osmotic stress signaling must overcome the suppression (Fig. 2) but the mechanism by which these SnRK2s are activated under osmotic stress is also unclear. There should be an ABA-independent mechanism to explain that SnRK2.6 is still activated by osmotic stress but not by ABA in the *abi1-1* mutant [9]. A modification of SnRK2s caused by osmotic stress or a binding protein might make SnRK2s resistant to PP2C inhibition.

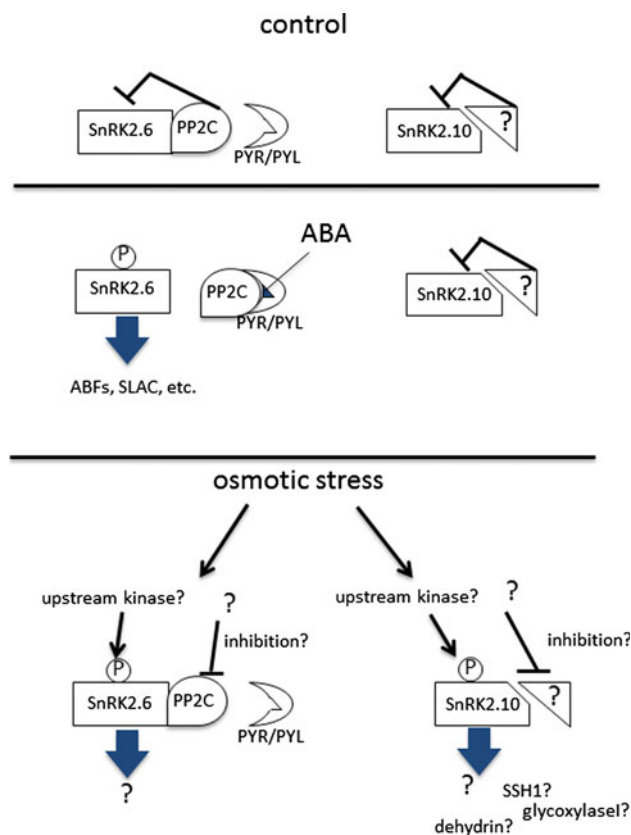


Fig. 2 Schematic model of SnRK2 activation. SnRK2.6 represents ABA-responsive SnRK2s whereas SnRK2.10 represents ABA-unresponsive SnRK2s

The relationship between SnRK2s and other components in the osmotic stress signaling pathway such as osmosensors requires investigation. The substrate specificity of SnRK2s is also unclear. If SnRK2s are shared by the ABA pathway and the osmotic stress pathway, how are specific substrates selected? Perhaps specificity depends on differences in intracellular localization or scaffold proteins.

The core components in the osmotic stress signaling pathway need to be identified in the near future, and this will greatly increase our understanding of how protein kinases affect plant tolerance to osmotic stress.

Acknowledgments This work was supported by National Institutes of Health Grants R01GM070795 and R01GM059138 (to J.-K.Z.).

Conflict of interest The authors declare that they have no conflicts of interest.

References

- Long SP, Ort DR (2010) More than taking the heat: crops and global change. *Curr Opin Plant Biol* 13:241–248
- Zhu JK (2002) Salt and drought stress signal transduction in plants. *Annu Rev Plant Biol* 53:247–273

3. Shinozaki K, Yamaguchi-Shinozaki K, Seki M (2003) Regulatory network of gene expression in the drought and cold stress responses. *Curr Opin Plant Biol* 6:410–417
4. Kilian J, Whitehead D, Horak J, Wanke D, Weigl S, Batistic O, D'Angelo C, Bornberg-Bauer E, Kudla J, Harter K (2007) The AtGenExpress global stress expression data set: protocols, evaluation and model data analysis of UV-B light, drought and cold stress responses. *Plant J* 50:347–363
5. Mikołajczyk M, Awotunde OS, Muszyńska G, Klessig DF, Dobrowolska G (2000) Osmotic stress induces rapid activation of a salicylic acid-induced protein kinase and a homolog of protein kinase ASK1 in tobacco cells. *Plant Cell* 12:165–178
6. Boudsocq M, Barbier-Brygoo H, Laurière C (2004) Identification of nine sucrose nonfermenting 1-related protein kinases 2 activated by hyperosmotic and saline stresses in *Arabidopsis thaliana*. *J Biol Chem* 279:41758–41766
7. Hrabak EM, Chan CW, Gribskov M, Harper JF, Choi JH, Halford N, Kudla J, Luan S, Nimmo HG, Sussman MR, Thomas M, Walker-Simmons K, Zhu JK, Harmon AC (2003) The *Arabidopsis* CDPK-SnRK superfamily of protein kinases. *Plant Physiol* 132:666–680
8. Monks DE, Aghoram K, Courtney PD, DeWald DB, Dewey RE (2001) Hyperosmotic stress induces the rapid phosphorylation of a soybean phosphatidylinositol transfer protein homolog through activation of the protein kinases SPK1 and SPK2. *Plant Cell* 13:1205–1219
9. Yoshida R, Umezawa T, Mizoguchi T, Takahashi S, Takahashi F, Shinozaki K (2006) The regulatory domain of SRK2E/OST1/SnRK2.6 interacts with ABI1 and integrates abscisic acid (ABA) and osmotic stress signals controlling stomatal closure in *Arabidopsis*. *J Biol Chem* 281:5310–5318
10. Kobayashi Y, Yamamoto S, Minami H, Kagaya Y, Hattori T (2004) Differential activation of the rice sucrose nonfermenting1-related protein kinase2 family by hyperosmotic stress and abscisic acid. *Plant Cell* 16:1163–1177
11. Fujii H, Verslues PE, Zhu JK (2011) *Arabidopsis* decuple mutant reveals the importance of SnRK2 kinases in osmotic stress responses in vivo. *Proc Natl Acad Sci USA* 108:1717–1722
12. Mustilli AC, Merlot S, Vavasseur A, Fenzi F, Giraudat J (2002) *Arabidopsis* OST1 protein kinase mediates the regulation of stomatal aperture by abscisic acid and acts upstream of reactive oxygen species production. *Plant Cell* 14:3089–3099
13. Yoshida R, Hobo T, Ichimura K, Mizoguchi T, Takahashi F, Aronso J, Ecker JR, Shinozaki K (2002) ABA-activated SnRK2 protein kinase is required for dehydration stress signaling in *Arabidopsis*. *Plant Cell Physiol* 43:1473–1483
14. Fujii H, Zhu JK (2009) *Arabidopsis* mutant deficient in 3 abscisic acid-activated protein kinases reveals critical roles in growth, reproduction, and stress. *Proc Natl Acad Sci USA* 106:8380–8385
15. Nakashima K, Fujita Y, Kanamori N, Katagiri T, Umezawa T, Kidokoro S, Maruyama K, Yoshida T, Ishiyama K, Kobayashi M, Shinozaki K, Yamaguchi-Shinozaki K (2009) Three *Arabidopsis* SnRK2 protein kinases, SRK2D/SnRK2.2, SRK2E/SnRK2.6/OST1 and SRK2I/SnRK2.3, involved in ABA signaling are essential for the control of seed development and dormancy. *Plant Cell Physiol* 50:1345–1363
16. Umezawa T, Yoshida R, Maruyama K, Yamaguchi-Shinozaki K, Shinozaki K (2004) SRK2C, a SNF1-related protein kinase 2, improves drought tolerance by controlling stress-responsive gene expression in *Arabidopsis thaliana*. *Proc Natl Acad Sci USA* 101:17306–17311
17. Mizoguchi M, Umezawa T, Nakashima K, Kidokoro S, Takasaki H, Fujita Y, Yamaguchi-Shinozaki K, Shinozaki K (2010) Two closely related subclass II SnRK2 protein kinases cooperatively regulate drought-inducible gene expression. *Plant Cell Physiol* 51:842–847
18. Shin R, Alvarez S, Burch AY, Jez JM, Schachtman DP (2007) Phosphoproteomic identification of targets of the *Arabidopsis* sucrose nonfermenting-like kinase SnRK2.8 reveals a connection to metabolic processes. *Proc Natl Acad Sci USA* 104:6460–6465
19. Zheng Z et al (2010) The protein kinase SnRK2.6 mediates the regulation of sucrose metabolism and plant growth in *Arabidopsis*. *Plant Physiol* 153:99–113
20. Mao X, Zhang H, Tian S, Chang X, Jing R (2010) TaSnRK2.4, an SNF1-type serine/threonine protein kinase of wheat (*Triticum aestivum* L.), confers enhanced multistress tolerance in *Arabidopsis*. *J Exp Bot* 61:683–696
21. Zhang H, Mao X, Jing R, Chang X, Xie H (2010) Characterization of a common wheat (*Triticum aestivum* L.) TaSnRK2.7 gene involved in abiotic stress responses. *J Exp Bot* 62:975–988
22. Zhang H, Mao X, Wang C, Jing R (2010) Overexpression of a common wheat gene TaSnRK2.8 enhances tolerance to drought, salt and low temperature in *Arabidopsis*. *PLoS One* 5:e16041
23. Thompson JD, Higgins DG, Gibson TJ (1994) CLUSTAL W: improving the sensitivity of progressive multiple sequence alignment through sequence weighting, position specific gap penalties and weight matrix choice. *Nucleic Acids Res* 22:4673–4680
24. Xu ZS, Liu L, Ni ZY, Liu P, Chen M, Li LC, Chen YF, Ma YZ (2009) W55a encodes a novel protein kinase that is involved in multiple stress responses. *J Integr Plant Biol* 51:58–66
25. Ying S, Zhang DF, Li HY, Liu YH, Shi YS, Song YC, Wang TY, Li Y (2011) Cloning and characterization of a maize SnRK2 protein kinase gene confers enhanced salt tolerance in transgenic *Arabidopsis*. *Plant Cell Rep* 30:1683–1699
26. Diédhiou CJ, Popova OV, Dietz KJ, Golldack D (2008) The SNF1-type serine-threonine protein kinase SAPK4 regulates stress-responsive gene expression in rice. *BMC Plant Biol* 8:49
27. Anderberg RJ, Walker-Simmons MK (1992) Isolation of a wheat cDNA clone for an abscisic acid-inducible transcript with homology to protein kinases. *Proc Natl Acad Sci USA* 89:10183–10187
28. Li J, Wang XQ, Watson MB, Assmann SM (2000) Regulation of abscisic acid-induced stomatal closure and anion channels by guard cell AAPK kinase. *Science* 287:300–303
29. Fujii H, Verslues PE, Zhu JK (2007) Identification of two protein kinases required for abscisic acid regulation of seed germination, root growth, and gene expression in *Arabidopsis*. *Plant Cell* 19:485–494
30. Fujita Y, Nakashima K, Yoshida T, Katagiri T, Kidokoro S, Kanamori N, Umezawa T, Fujita M, Maruyama K, Ishiyama K, Kobayashi M, Nakasone S, Yamada K, Ito T, Shinozaki K, Yamaguchi-Shinozaki K (2009) Three SnRK2 protein kinases are the main positive regulators of abscisic acid signaling in response to water stress in *Arabidopsis*. *Plant Cell Physiol* 50:2123–2132
31. Park SY, Fung P, Nishimura N, Jensen DR, Fujii H, Zhao Y, Lumba S, Santiago J, Rodrigues A, Chow TF, Alfred SE, Bonetta D, Finkelstein R, Provart NJ, Desveaux D, Rodriguez PL, McCourt P, Zhu JK, Schroeder JI, Volkman BF, Cutler SR (2009) Abscisic acid inhibits type 2C protein phosphatases via the PYR/PYL family of START proteins. *Science* 324:1068–1071
32. Ma Y, Szostkiewicz I, Korte A, Moes D, Yang Y, Christmann A, Grill E (2009) Regulators of PP2C phosphatase activity function as abscisic acid sensors. *Science* 324:1064–1068
33. Umezawa T, Sugiyama N, Mizoguchi M, Hayashi S, Myouga F, Yamaguchi-Shinozaki K, Ishihama Y, Hirayama T, Shinozaki K (2009) Type 2C protein phosphatases directly regulate abscisic acid-activated protein kinases in *Arabidopsis*. *Proc Natl Acad Sci USA* 106:17588–17593
34. Vlad F, Rubio S, Rodrigues A, Sirichandra C, Belin C, Robert N, Leung J, Rodriguez PL, Laurière C, Merlot S (2009) Protein phosphatases 2C regulate the activation of the Snf1-related kinase OST1 by abscisic acid in *Arabidopsis*. *Plant Cell* 21:3170–3184

35. Fujii H, Chinnusamy V, Rodrigues A, Rubio S, Antoni R, Park SY, Cutler SR, Sheen J, Rodriguez PL, Zhu JK (2009) In vitro reconstitution of an abscisic acid signalling pathway. *Nature* 462:660–664
36. Burza AM, Pekala I, Sikora J, Siedlecki P, Malagocki P, Bucholc M, Koper L, Zielenkiewicz P, Dadlez M, Dobrowolska G (2006) *Nicotiana tabacum* osmotic stress-activated kinase is regulated by phosphorylation on Ser-154 and Ser-158 in the kinase activation loop. *J Biol Chem* 281:34299–34311
37. Soon FF, Ng LM, Zhou XE, West GM, Kovach A, Tan MH, Suino-Powell KM, He Y, Xu Y, Chalmers MJ, Brunzelle JS, Zhang H, Yang H, Jiang H, Li J, Yong EL, Cutler S, Zhu JK, Griffin PR, Melcher K, Xu HE (2012) Molecular mimicry regulates ABA signaling by SnRK2 kinases and PP2C phosphatases. *Science* 335:85–88
38. Ng LM, Soon FF, Zhou XE, West GM, Kovach A, Suino-Powell KM, Chalmers MJ, Li J, Yong EL, Zhu JK, Griffin PR, Melcher K, Xu HE (2011) Structural basis for basal activity and autoactivation of abscisic acid (ABA) signaling SnRK2 kinases. *Proc Natl Acad Sci USA* 108:21259–21264
39. Belin C, de Franco PO, Bourbonousse C, Chaignepain S, Schmitter JM, Vavasseur A, Giraudat J, Barbier-Brygoo H, Thomine S (2006) Identification of features regulating OST1 kinase activity and OST1 function in guard cells. *Plant Physiol* 141:1316–1327
40. Vlad F, Droillard MJ, Valot B, Khafif M, Rodrigues A, Brault M, Zivy M, Rodriguez PL, Merlot S, Laurière C (2010) Phospho-site mapping, genetic and in planta activation studies reveal key aspects of the different phosphorylation mechanisms involved in activation of SnRK2s. *Plant J* 63:778–790
41. Kline KG, Barrett-Wilt GA, Sussman MR (2010) In planta changes in protein phosphorylation induced by the plant hormone abscisic acid. *Proc Natl Acad Sci USA* 107:15986–15991
42. Boudsocq M, Droillard M-J, Barbier-Brygoo H, Laurière C (2007) Different phosphorylation mechanisms are involved in the activation of sucrose non-fermenting 1 related protein kinases 2 by osmotic stresses and abscisic acid. *Plant Mol Biol* 63:491–503
43. Engel K, Schultz H, Martin F, Kotlyarov A, Plath K, Hahn M, Heinemann U, Gaestel M (1995) Constitutive activation of mitogen-activated protein kinase-activated protein kinase 2 by mutation of phosphorylation sites and an A-helix motif. *J Biol Chem* 270:27213–27221
44. Gong D, Zhang C, Chen X, Gong Z, Zhu JK (2002) Constitutive activation and transgenic evaluation of the function of an *Arabidopsis* PKS protein kinase. *J Biol Chem* 277:42088–42096
45. Ding X, Richter T, Chen M, Fujii H, Seo YS, Xie M, Zheng X, Kanrar S, Stevenson RA, Dardick C, Li Y, Jiang H, Zhang Y, Yu F, Bartley LE, Chern M, Bart R, Chen X, Zhu L, Farmerie WG, Gribskov M, Zhu JK, Fromm ME, Ronald PC, Song WY (2009) A rice kinase–protein interaction map. *Plant Physiol* 149:1478–1492
46. Bucholc M, Ciesielski A, Goch G, Anielska-Mazur A, Kulik A, Krzywińska E, Dobrowolska G (2010) SNF1-related protein kinases 2 are negatively regulated by a plant-specific calcium sensor. *J Biol Chem* 286:3429–3441
47. Siegel RS, Xue S, Murata Y, Yang Y, Nishimura N, Wang A, Schroeder JI (2009) Calcium elevation-dependent and attenuated resting calcium-dependent abscisic acid induction of stomatal closure and abscisic acid-induced enhancement of calcium sensitivities of S-type anion and inward-rectifying K channels in *Arabidopsis* guard cells. *Plant J* 59:207–220
48. Guiltinan MJ, Marcotte WR Jr, Quatrano RS (1990) A plant leucine zipper protein that recognizes an abscisic acid response element. *Science* 250:267–271
49. Choi H, Hong J, Ha J, Kang J, Kim SY (2000) ABFs, a family of ABA-responsive element binding factors. *J Biol Chem* 275:1723–1730
50. Uno Y, Furihata T, Abe H, Yoshida R, Shinozaki K, Yamaguchi-Shinozaki K (2000) *Arabidopsis* basic leucine zipper transcription factors involved in an abscisic acid-dependent signal transduction pathway under drought and high-salinity conditions. *Proc Natl Acad Sci USA* 97:11632–11637
51. Yamaguchi-Shinozaki K, Shinozaki K (2006) Transcriptional regulatory networks in cellular responses and tolerance to dehydration and cold stresses. *Annu Rev Plant Biol* 57:781–803
52. Lopez-Molina L, Mongrand S, Chua NH (2001) A postgermination developmental arrest checkpoint is mediated by abscisic acid and requires the ABI5 transcription factor in *Arabidopsis*. *Proc Natl Acad Sci USA* 98:4782–4787
53. Furihata T, Maruyama K, Fujita Y, Umezawa T, Yoshida R, Shinozaki K, Yamaguchi-Shinozaki K (2006) Abscisic acid-dependent multisite phosphorylation regulates the activity of a transcription activator AREB1. *Proc Natl Acad Sci USA* 103:1988–1993
54. Johnson RR, Wagner RL, Verhey SD, Walker-Simmons MK (2002) The abscisic acid-responsive kinase PKABA1 interacts with a seed-specific abscisic acid response element-binding factor, TaABF, and phosphorylates TaABF peptide sequences. *Plant Physiol* 130:837–846
55. Kobayashi Y, Murata M, Minami H, Yamamoto S, Kagaya Y, Hobo T, Yamamoto A, Hattori T (2005) Abscisic acid-activated SNRK2 protein kinases function in the gene-regulation pathway of ABA signal transduction by phosphorylating ABA response element-binding factors. *Plant J* 44:939–949
56. Piskurewicz U, Jikumaru Y, Kinoshita N, Nambara E, Kamiya Y, Lopez-Molina L (2008) The gibberellic acid signaling repressor RGL2 inhibits *Arabidopsis* seed germination by stimulating abscisic acid synthesis and ABI5 activity. *Plant Cell* 20:2729–2745
57. Vahisalu T, Kollist H, Wang YF, Nishimura N, Chan WY, Valerio G, Lamminmäki A, Brosché M, Moldau H, Desikan R, Schroeder JI, Kangasjärvi J (2008) SLAC1 is required for plant guard cell S-type anion channel function in stomatal signalling. *Nature* 452:487–491
58. Negi J, Matsuda O, Nagasawa T, Oba Y, Takahashi H, Kawai-Yamada M, Uchimiya H, Hashimoto M, Iba K (2008) CO2 regulator SLAC1 and its homologues are essential for anion homeostasis in plant cells. *Nature* 452:483–486
59. Geiger D, Scherzer S, Mumm P, Stange A, Marten I, Bauer H, Ache P, Matschi S, Liese A, Al-Rasheid KA, Romeis T, Hedrich R (2009) Activity of guard cell anion channel SLAC1 is controlled by drought-stress signaling kinase-phosphatase pair. *Proc Natl Acad Sci USA* 106:21425–21430
60. Lee SC, Lan W, Buchanan BB, Luan S (2009) A protein kinase-phosphatase pair interacts with an ion channel to regulate ABA signaling in plant guard cells. *Proc Natl Acad Sci USA* 106:21419–21424
61. Sato A, Sato Y, Fukao Y, Fujiwara M, Umezawa T, Shinozaki K, Hibi T, Taniguchi M, Miyake H, Goto DB, Uozumi N (2009) Threonine at position 306 of the KAT1 potassium channel is essential for channel activity and is a target site for ABA-activated SnRK2/OST1/SnRK2.6 protein kinase. *Biochem J* 424:439–448
62. Sirichandra C, Gu D, Hu HC, Davanture M, Lee S, Djaoui M, Valot B, Zivy M, Leung J, Merlot S, Kwak JM (2009) Phosphorylation of the *Arabidopsis* AtrbohF NADPH oxidase by OST1 protein kinase. *FEBS Lett* 583:2982–2986
63. Vlad F, Turk BE, Peynot P, Leung J, Merlot S (2008) A versatile strategy to define the phosphorylation preferences of plant protein kinases and screen for putative substrates. *Plant J* 55:104–117
64. Hohmann S (2002) Osmotic stress signaling and osmoadaptation in yeasts. *Microbiol Mol Biol Rev* 66:300–372
65. Urao T, Yakubov B, Satoh R, Yamaguchi-Shinozaki K, Seki M, Hirayama T, Shinozaki K (1999) A transmembrane hybrid-type

- histidine kinase in *Arabidopsis* functions as an osmosensor. *Plant Cell* 11:1743–1754
66. Reiser V, Raitt DC, Saito H (2003) Yeast osmosensor Sln1 and plant cytokinin receptor Cre1 respond to changes in turgor pressure. *J Cell Biol* 161:1035–1040
67. Tran LS, Urao T, Qin F, Maruyama K, Kakimoto T, Shinozaki K, Yamaguchi-Shinozaki K (2007) Functional analysis of AHK1/ATHK1 and cytokinin receptor histidine kinases in response to abscisic acid, drought, and salt stress in *Arabidopsis*. *Proc Natl Acad Sci USA* 104:20623–20628
68. Munnik T, Ligterink W, Meskiene I, Calderini O, Beyerly J, Musgrave A, Hirt H (1999) Distinct osmosensing protein kinase pathways are involved in signalling moderate and severe hyperosmotic stress. *Plant J* 20:381–388
69. Hoyos ME, Zhang S (2000) Calcium-independent activation of salicylic acid-induced protein kinase and a 40-kiloDalton protein kinase by hyperosmotic stress. *Plant Physiol* 122:1355–1363
70. Ichimura K, Mizoguchi T, Yoshida R, Yuasa T, Shinozaki K (2000) Various abiotic stresses rapidly activate *Arabidopsis* MAP kinases ATMPK4 and ATMPK6. *Plant J* 24:655–665
71. Droillard MJ, Boudsocq M, Barbier-Brygoo H, Laurière C (2004) Involvement of MPK4 in osmotic stress response pathways in cell suspensions and plantlets of *Arabidopsis thaliana*: activation by hypoosmolarity and negative role in hyperosmolarity tolerance. *FEBS Lett* 574:42–48
72. Droillard M, Boudsocq M, Barbier-Brygoo H, Laurière C (2002) Different protein kinase families are activated by osmotic stresses in *Arabidopsis thaliana* cell suspensions. Involvement of the MAP kinases AtMPK3 and AtMPK6. *FEBS Lett* 527:43–50
73. Zhang L, Xi D, Li S, Gao Z, Zhao S, Shi J, Wu C, Guo X (2011) A cotton group C MAP kinase gene, GhMPK2, positively regulates salt and drought tolerance in tobacco. *Plant Mol Biol* 77:17–31
74. Franz S, Ehlert B, Liese A, Kurth J, Cazalé AC, Romeis T (2011) Calcium-dependent protein kinase CPK21 functions in abiotic stress response in *Arabidopsis thaliana*. *Mol Plant* 4:83–96
75. Sheen J (1996) Ca²⁺-dependent protein kinases and stress signal transduction in plants. *Science* 274:1900–1902
76. Saijo Y, Hata S, Kyojuka J, Shimamoto K, Izui K (2000) Overexpression of a single Ca²⁺-dependent protein kinase confers both cold and salt/drought tolerance on rice plants. *Plant J* 23:319–327
77. Xu J, Tian YS, Peng RH, Xiong AS, Zhu B, Jin XF, Gao F, Fu XY, Hou XL, Yao QH (2010) AtCPK6, a functionally redundant and positive regulator involved in salt/drought stress tolerance in *Arabidopsis*. *Planta* 231:1251–1260
78. Zhang A, Jiang M, Zhang J, Tan M, Hu X (2006) Mitogen-activated protein kinase is involved in abscisic acid-induced antioxidant defense and acts downstream of reactive oxygen species production in leaves of maize plants. *Plant Physiol* 141:475–487
79. Jammes F, Song C, Shin D, Munemasa S, Takeda K, Gu D, Cho D, Lee S, Giordo R, Sritubtim S, Leonhardt N, Ellis BE, Murata Y, Kwak JM (2009) MAP kinases MPK9 and MPK12 are preferentially expressed in guard cells and positively regulate ROS-mediated ABA signaling. *Proc Natl Acad Sci USA* 106:20520–20525
80. Mori IC, Murata Y, Yang Y, Munemasa S, Wang YF, Andreoli S, Tiriack H, Alonso JM, Harper JF, Ecker JR, Kwak JM, Schroeder JI (2006) CDPKs CPK6 and CPK3 function in ABA regulation of guard cell S-type anion- and Ca²⁺-permeable channels and stomatal closure. *PLoS Biol* 4:e327
81. Zhu SY, Yu XC, Wang XJ, Zhao R, Li Y, Fan RC, Shang Y, Du SY, Wang XF, Wu FQ, Xu YH, Zhang XY, Zhang DP (2007) Two calcium-dependent protein kinases, CPK4 and CPK11, regulate abscisic acid signal transduction in *Arabidopsis*. *Plant Cell* 19:3019–3036
82. Yu XC, Zhu SY, Gao GF, Wang XJ, Zhao R, Zou KQ, Wang XF, Zhang XY, Wu FQ, Peng CC, Zhang DP (2007) Expression of a grape calcium-dependent protein kinase ACPK1 in *Arabidopsis thaliana* promotes plant growth and confers abscisic acid-hypersensitivity in germination, postgermination growth, and stomatal movement. *Plant Mol Biol* 64:531–538
83. Ma SY, Wu WH (2007) AtCPK23 functions in *Arabidopsis* responses to drought and salt stresses. *Plant Mol Biol* 65:511–518
84. Geiger D, Scherzer S, Mumm P, Marten I, Ache P, Matschi S, Liese A, Wellmann C, Al-Rasheid KA, Grill E, Romeis T, Hedrich R (2010) Guard cell anion channel SLAC1 is regulated by CDPK protein kinases with distinct Ca²⁺ affinities. *Proc Natl Acad Sci USA* 107:8023–8028