

RESEARCH

Open Access

Overexpression of ribosome binding protein 1 (RRBP1) in breast cancer

Deepthi Telikicherla^{1,2}, Arivusudar Marimuthu¹, Manoj Kumar Kashyap¹, Y L Ramachandra², Sujatha Mohan^{1,3}, Juan Carlos Roa⁴, Jagadeesha Maharudraiah^{1,5,6*} and Akhilesh Pandey^{7,8,9,10,11*}

* Correspondence: jagadeesha@ibioinformatics.org; pandey@jhmi.edu

¹Institute of Bioinformatics, International Tech Park, Bangalore 560 066, India

⁵Department of Pathology and Laboratory Medicine, Icon Hospitals, Bangalore 560027, India

Full list of author information is available at the end of the article

Abstract

The molecular events that lead to malignant transformation and subsequent metastasis of breast carcinoma include alterations in the cells at genome, transcriptome and proteome levels. In this study, we used publicly available gene expression databases to identify those candidate genes which are upregulated at the mRNA level in breast cancers but have not been systematically validated at the protein level. Based on an extensive literature search, we identified ribosome binding protein 1 (RRBP1) as a candidate that is upregulated at the mRNA level in five different studies but its protein expression had not been investigated.

Immunohistochemical labeling of breast cancer tissue microarrays was carried out to determine the expression of RRBP1 in a large panel of breast cancers. We found that RRBP1 was overexpressed in 84% (177/219) of breast carcinoma cases tested. The subcellular localization of RRBP1 was mainly observed to be in the cytoplasm with intense staining in the perinuclear region. Our findings suggest that RRBP1 is an interesting molecule that can be further studied for its potential to serve as a breast cancer biomarker. This study also demonstrates how the integration of biological data from available resources in conjunction with systematic evaluation approaches can be successfully applied to clinical proteomics.

Keywords: Breast neoplasms, ES130, p180, 180 kDa ribosome receptor homolog, Endoplasmic reticulum membrane protein, Immunohistochemistry, Biomarker, Early detection

Background

Breast cancer is the most prevalent cancer in women and is responsible for ~450,000 deaths worldwide each year. It accounted for 23% of new cancer cases and 14% of total cancer deaths in 2008 [1]. The molecular pathology of breast cancer has been studied extensively over the last two decades and a large number of alterations at the molecular level have been reported by several groups. Gene expression profiling studies are a powerful means of investigating changes in the transcriptome of cancerous cells. They provide a broad view of the numerous candidate genes that are differentially expressed in normal and cancerous lesions [2]. Many of these genes show significant changes in corresponding protein expression. Large scale gene expression profiling studies have been carried out on various subtypes of breast carcinomas by different groups [3-5]. Although these studies have reported many common genes that are significantly

upregulated at the mRNA level in breast tumors, such findings are not of much importance if the overexpression is not reflected at the protein level. Moreover, high-throughput techniques like microarrays are associated with limitations such as experimental and biological noise that necessitate further validation of the results obtained using other relatively accurate methods. The current rush of RNA-Seq analyses will also require the same kind of validation that mRNA transcripts are actually translated into proteins.

Our approach in this study was to integrate data from public repositories of gene expression information and online resources of protein information coupled to literature mining to generate a list of molecules that have been shown to be overexpressed at the transcript level but not at the protein level. We selected RRBP1 as one such candidate to further validate its protein expression across a panel of breast carcinomas using immunohistochemistry.

RRBP1(Q9P2E9, ENSP00000367044.1) is an endoplasmic reticulum membrane protein [6-8] that is essential for ribosome binding and for the translocation of nascent proteins across the membrane of the rough endoplasmic reticulum [9]. Although RRBP1 is known to be localized primarily to the endoplasmic reticulum, it has also been detected in the nucleus and the cytoplasm [10]. It is a 1410 amino acid protein composed of a hydrophobic NH₂-terminus that includes a transmembrane domain, a highly conserved tandem repeat (ribosome-binding domain), and an acidic coiled-coil COOH-terminal domain [11]. It has been shown to play an important role in procollagen biosynthesis in secretory tissues and in the terminal differentiation of secretory tissues [6,12]. It has also been shown to interact with KIF5B [13], a motor protein highly expressed in several cancer cell lines [14]. There are limited reports on expression of this protein in cancers. In a study by Krasnov *et al.*, it has been shown to be overexpressed in colorectal cancers [15].

Immunohistochemistry is a robust method to validate the differential expression of proteins at tissue level. Tissue microarray arrays (TMAs) allow the testing of a single biomarker in a high-throughput fashion to test large number of normal and cancerous tissues simultaneously. Using this approach, we could identify the overexpression of RRBP1 in 84% of the breast tumors assayed. RRBP1, as a consequence of its overexpression, could possibly leak into blood plasma and show up at detectable levels in breast carcinomas. We foresee that RRBP1 could be a promising biomarker if validated in a larger cohort, especially in the plasma or serum.

Results and discussion

Selection of RRBP1 as a candidate marker for evaluation

To identify novel candidate biomarkers for breast cancers, we collected information about genes that have been reported to have significantly altered expression levels in breast tumors. We used the online gene expression database Oncomine [16,17] to generate a list of genes which were transcriptionally upregulated in breast cancer. We next checked the published literature to determine if they have been studied for their expression at the protein level. The Human Protein Reference Database (HPRD) [18-20] was next used to obtain additional information on the molecules that were short-listed. Out of the list of genes that were transcriptionally upregulated in breast cancers

Table 1 The top ten shortlisted molecules with reports of overexpression at transcript level but with no protein level studies in breast cancers

Gene symbol	Description	Number of studies in Oncomine reporting significant overexpression in breast cancers
1 <i>RRBP1</i>	Ribosome binding protein 1 homolog 180 kDa	5
2 <i>XPNPEP3</i>	X-prolyl aminopeptidase (aminopeptidase P) 3, putative	5
3 <i>RCOR3</i>	REST corepressor 3	5
4 <i>CDS2</i>	CDP-diacylglycerol synthase (phosphatidate cytidyltransferase) 2 4	2 4
5 <i>LSR</i>	Lipolysis stimulated lipoprotein receptor	4
6 <i>PDE4DIP</i>	Phosphodiesterase 4D interacting protein	4
7 <i>PGPEP1</i>	Pyroglutamyl-peptidase I	3
8 <i>C9ORF46</i>	Transmembrane protein C9orf46	2
9 <i>KIFAP3</i>	Kinesin-associated protein 3	2
10 <i>ZYG11A</i>	Zyg-11 homolog A	2

but were not yet reported to be overexpressed at the protein level, the top ten candidates of which are shown in Table 1, we chose *RRBP1* for further evaluation. We found five published studies that reported significant upregulation of *RRBP1* at the transcript level. A summary of results of the query we made in Oncomine is shown in Table 2.

RRBP1 was chosen as a candidate because of the availability of an antibody in the Human Protein Atlas (HPA) [26,27] that worked in immunohistochemistry applications and also because of its known role in tumorigenesis [15].

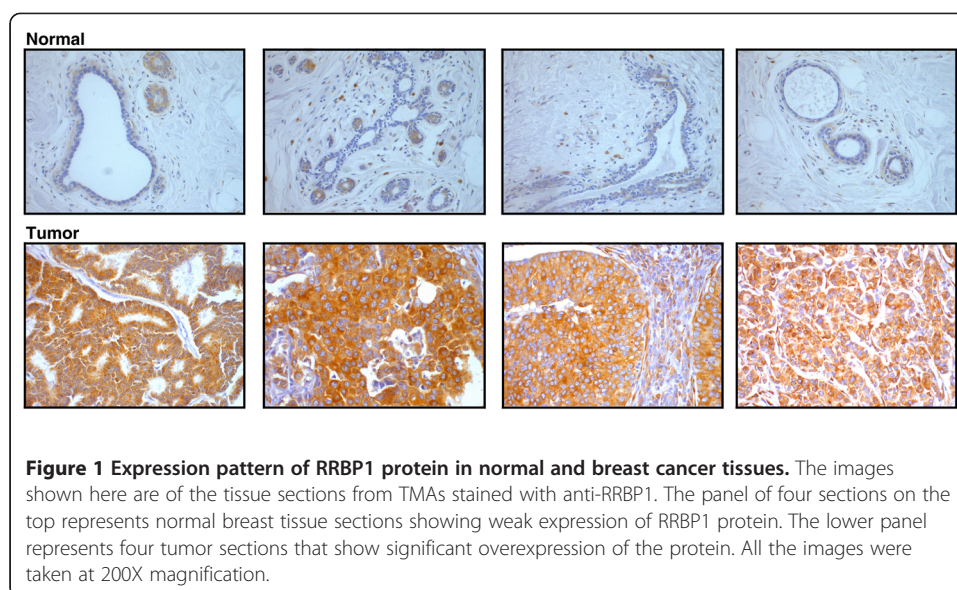
We next performed immunohistochemistry on tissue microarrays to test the expression of *RRBP1* protein across normal breast epithelium, benign hyperplasias, in situ carcinomas, invasive tumors and also metastatic breast cancers.

***RRBP1* overexpression in breast tumors**

Tissue microarrays were immunohistochemically labeled using a polyclonal antibody directed against a unique region of *RRBP1*. The immunogen used was a recombinant peptide of 107 amino acids that constitutes a part of a coiled coil motif on the protein [28]. Figure 1 shows the images of some anti-*RRBP1* stained normal and breast cancer tissue sections. The differential expression of the protein among the normal breast

Table 2 Studies from ONCOMINE database showing significant upregulation of *RRBP1* in breast cancer vs normal analyses

Study	Sample size	Analysis type	Fold change	p-value
1. Radvanyi et al. (2005) [21]	63	Ductal Breast Carcinoma in Situ vs. Normal	3.3	p=0.017
		Invasive Mixed Breast Carcinoma vs. Normal	2.4	p=0.013
		Invasive Ductal Breast Carcinoma vs. Normal	2.2	p=0.021
2. Finak et al. (2009) [22]	59	Invasive Breast Carcinoma Stroma vs. Normal	1.8	p=4.75E-5
3. Perou et al. (2000) [23]	65	Lobular Breast Carcinoma vs. Normal	1.7	p=0.046
4. Zhao et al. (2004) [24]	64	Invasive Ductal Breast Carcinoma vs. Normal	1.7	p=0.007
		Lobular Breast Carcinoma vs. Normal	1.4	p=0.022
5. Turashvili et al. (2007) [25]	30	Invasive Ductal Breast Carcinoma vs. Normal	1.3	p=0.007



tissue sections (upper panel) and the tumor tissue sections (lower panel) can be clearly visualized. We used a progression TMA to assess the expression of this protein in diverse types of benign breast tumors and malignant breast carcinomas. We observed that the expression of RRBP1 protein showed a definite increase in malignant tumors when compared to normal, benign and hyperplastic conditions. However, we did not observe any gradation in the expression of RRBP1 in benign or hyperplastic conditions. Table 3 shows the pattern of expression of RRBP1 across the cases tested. As shown in the table, 84% of the tumors showed overexpression of RRBP1. The expression of RRBP1 in the 16 controls tested showed a weak to moderate cytoplasmic staining. Out of the 219 cases tested, 177 cases showed positive staining in carcinoma cells alone, 25 cases showed positive staining in tumor as well as the stromal components and 16 cases showed overexpression only in the stroma but not in the tumor cells.

Public availability and accessibility of IHC data

To make our observations publicly available and accessible to other researchers, we have submitted our data on the immunohistochemical analysis of RRBP1 to Human Proteinpedia (HUPA) [29,30]. The expression of RRBP1 in normal breast epithelium [31] and in breast cancer [32] can be visualized in separate pages. Figure 2 shows a screenshot of HPRD molecule page for RRBP1 and also of HUPA resource which is linked to HPRD, displaying RRBP1 expression in breast cancer.

Table 3 Summary of RRBP1 expression pattern in breast cancer tissues

Parameters	Number of cases
1. Number of cases tested	259
2. Number of positive cases	219
3. Number of cases with positive staining of carcinoma cells alone	177
4. Number of cases with positive staining of stroma alone	16
5. Number of cases with positive staining of both carcinoma and stromal component.	25

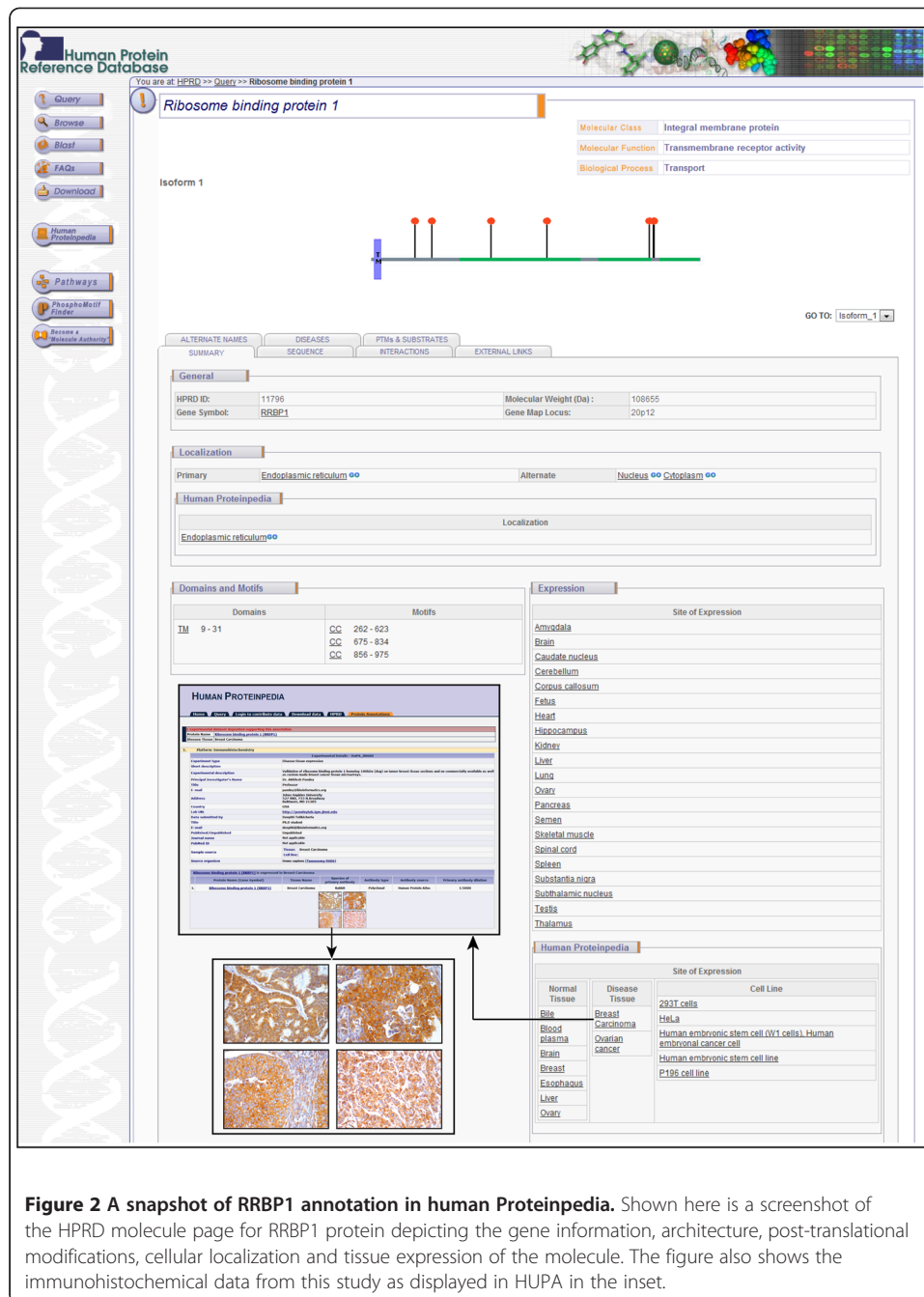


Figure 2 A snapshot of RRBP1 annotation in human Proteinpedia. Shown here is a screenshot of the HPRD molecule page for RRBP1 protein depicting the gene information, architecture, post-translational modifications, cellular localization and tissue expression of the molecule. The figure also shows the immunohistochemical data from this study as displayed in HUPA in the inset.

Conclusions

The results we obtained from our experiment show that RRBP1 was significantly up-regulated in breast cancers. The unique work plan we followed to close in on RRBP1 protein using online gene expression data repositories, databases that provide protein information and published literature has proven beneficial in finding candidate biomarkers in a fast and effective manner. This study highlights the power of a bioinformatics approach coupled to experimental validation. We found RRBP1 as a novel candidate marker that is significantly overexpressed in invasive breast carcinomas. However, further analyses across larger sample sets and insights into the functional

aspects of the molecule are necessary to confirm its significance as a breast cancer biomarker.

Methods

Tissue microarrays

We used two types of TMAs including one breast cancer progression TMA (n = 36) that was purchased from Creative Biolabs (TMA-029) and custom TMAs (n = 44) that were prepared by JCR. The custom TMA construction and the use of cases was approved by the Institutional Review Board (IRB) at the Universidad de La Frontera, Temuco, Chile.

Immunohistochemical staining

Immunohistochemical staining was performed on breast cancer tissue microarrays for RRBP1. The rabbit polyclonal antibody against RRBP1 was purchased from the Human Protein Atlas (catalog # HPA009026). Anti-RRBP1 antibody was used at 1:5000 dilution. An Envision kit (DAKO) was used following the manufacturer's instructions. Briefly, tissue microarrays were deparaffinized and antigen retrieval was carried out by incubating for 20 minutes in antigen retrieval buffer. Endogenous peroxidases were quenched using the blocking solution followed by three washes with the wash buffer. The sections were incubated overnight at 4°C in a humidified chamber with the primary antibody. After washing, the slides were incubated with appropriate horseradish peroxidase conjugated secondary antibody for 30 minutes at room temperature. Immunoperoxidase staining was developed for 5 minutes using DAB chromogen, and counterstained with hematoxylin (Nice Chemicals, India). We used the diluent instead of primary antibody as the negative control. The images were taken by using LEITZ DMRB model (Leica Microsystems, Wetzlar, Germany) microscope at a magnification of 200X. Immunohistochemical labeling was assessed by an experienced expert pathologist (JM), and intensity of staining was scored as negative (0), mild (1+), moderate (2+), or strong (3+). The distribution of staining of cancer cells was scored as 0 (less than 5% of cells staining), 1+ (5%–30% of cells staining), 2+ (31%–60% of cells staining) or 3+ (greater than 60% of cells staining). Comparisons were made between the intensity of the staining of carcinoma cells and that of normal breast tissue.

Abbreviations

RRBP1: Ribosome binding protein 1; TMA: Tissue microarray; KIF5B: Kinesin family member 5B.

Competing interests

The author(s) declare that they have no competing interests.

Authors' contributions

AP designed the study. DT, AM and MKK did the bioinformatics analysis for selection of candidate molecule and also performed the immunohistochemical staining. JCR provided the breast cancer TMAs. JM scored the stained tissue sections. SM and YLR participated in design and coordination of the study and helped to draft the manuscript. All authors reviewed and edited the manuscript. All authors read and approved the final manuscript.

Acknowledgements

We thank the Department of Biotechnology, Government of India for research support to the Institute of Bioinformatics, Bangalore. Deepthi Telikicherla is a recipient of a Senior Research Fellowship from the Indian Council of Medical Research (ICMR), New Delhi, Government of India. We thank Dr. S. K. Shankar and Dr. Anita Mahadevan of National Institute of Mental Health and Neurological Sciences (NIMHANS), Bangalore for providing access to the imaging facility.

Author details

¹Institute of Bioinformatics, International Tech Park, Bangalore 560 066, India. ²Department of Biotechnology, Kuvempu University, Shankaraghatta 577451, India. ³Research Unit for Immunoinformatics, RIKEN Research Center for Allergy and Immunology, 1-7-22 Suehiro-cho, Tsurumi-ku, Yokohama, Kanagawa 230-0045, Japan. ⁴Department of Pathology, Universidad de La Frontera, Temuco, Chile. ⁵Department of Pathology and Laboratory Medicine, Icon Hospitals, Bangalore 560027, India. ⁶Manipal University, Madhav Nagar, Manipal 576104, India. ⁷McKusick-Nathans Institute of Genetic Medicine, Johns Hopkins University School of Medicine, Baltimore, MD 21205, USA. ⁸Department of Biological Chemistry, Johns Hopkins University School of Medicine, Baltimore, MD 21205, USA. ⁹Department of Pathology, Johns Hopkins University School of Medicine, Baltimore, MD 21205, USA. ¹⁰Department of Oncology, Johns Hopkins University School of Medicine, Baltimore, MD 21205, USA. ¹¹McKusick-Nathans Institute of Genetic Medicine, 733 N. Broadway, BRB 527, Johns Hopkins University, Baltimore, MD 21205, USA.

Received: 1 February 2012 Accepted: 8 June 2012

Published: 18 June 2012

References

1. Jemal A, Bray F, Center MM, Ferlay J, Ward E, Forman D: **Global cancer statistics.** *CA Canc J Clin* 2011, **61**(2):69–90.
2. van de Vijver MJ, He YD, van't Veer LJ, Dai H, Hart AA, Voskuil DW, Schreiber GJ, Peterse JL, Roberts C, Marton MJ, et al: **A gene-expression signature as a predictor of survival in breast cancer.** *N Engl J Med* 2002, **347**(25):1999–2009.
3. van 't Veer LJ, Dai H, van de Vijver MJ, He YD, Hart AA, Mao M, Peterse HL, van der Kooy K, Marton MJ, Witteveen AT, et al: **Gene expression profiling predicts clinical outcome of breast cancer.** *Nature* 2002, **415**(6871):530–536.
4. Hedenfalk I, Duggan D, Chen Y, Radmacher M, Bittner M, Simon R, Meltzer P, Gusterson B, Esteller M, Kallioniemi OP, et al: **Gene expression profiles in hereditary breast cancer.** *N Engl J Med* 2001, **344**(8):539–548.
5. Murphy N, Millar E, Lee CS: **Gene expression profiling in breast cancer: towards individualising patient management.** *Pathology* 2005, **37**(4):271–277.
6. Benyamini P, Webster P, Meyer DI: **Knockdown of p180 eliminates the terminal differentiation of a secretory cell line.** *Mol Biol Cell* 2009, **20**(2):732–744.
7. Ogawa-Goto K, Tanaka K, Ueno T, Kurata T, Sata T, Irie S: **p180 is involved in the interaction between the endoplasmic reticulum and microtubules through a novel microtubule-binding and bundling domain.** *Mol Biol Cell* 2007, **18**(10):3741–3751.
8. Barbe L, Lundberg E, Oksvold P, Stenius A, Lewin E, Bjorling E, Asplund A, Ponten F, Brismar H, Uhlen M, et al: **Toward a confocal subcellular atlas of the human proteome.** *Mol Cell Proteomics* 2008, **7**(3):499–508.
9. Savitz AJ, Meyer DI: **180-kD ribosome receptor is essential for both ribosome binding and protein translocation.** *J Cell Biol* 1993, **120**(4):853–863.
10. Olsen JV, Blagoev B, Gnäd F, Macek B, Kumar C, Mortensen P, Mann M: **Global, in vivo, and site-specific phosphorylation dynamics in signaling networks.** *Cell* 2006, **127**(3):635–648.
11. Wanker EE, Sun Y, Savitz AJ, Meyer DI: **Functional characterization of the 180-kD ribosome receptor in vivo.** *J Cell Biol* 1995, **130**(1):29–39.
12. Ueno T, Tanaka K, Kaneko K, Taga Y, Sata T, Irie S, Hattori S, Ogawa-Goto K: **Enhancement of procollagen biosynthesis by p180 through augmented ribosome association on the endoplasmic reticulum in response to stimulated secretion.** *J Biol Chem* 2010, **285**(39):29941–29950.
13. Diefenbach RJ, Diefenbach E, Douglas MW, Cunningham AL: **The ribosome receptor, p180, interacts with kinesin heavy chain, KIF5B.** *Biochem Biophys Res Commun* 2004, **319**(3):987–992.
14. Cardoso CM, Groth-Pedersen L, Hoyer-Hansen M, Kirkegaard T, Corcelle E, Andersen JS, Jaattela M, Nylandsted J: **Depletion of kinesin 5B affects lysosomal distribution and stability and induces peri-nuclear accumulation of autophagosomes in cancer cells.** *PLoS One* 2009, **4**(2):e4424.
15. Krasnov GS, Oparina N, Khankin SL, Mashkova TD, Ershov AN, Zatssepina OG, Karpov VL, Beresten SF: **Colorectal cancer 2D-proteomics: identification of altered protein expression.** *Mol Biol (Mosk)* 2009, **43**(2):348–356.
16. Rhodes DR, Yu J, Shanker K, Deshpande N, Varambally R, Ghosh D, Barrette T, Pandey A, Chinnaiyan AM: **ONCOMINE: a cancer microarray database and integrated data-mining platform.** *Neoplasia* 2004, **6**(1):1–6.
17. ONCOMINE: <https://www.oncomine.org/>.
18. Peri S, Navarro JD, Amanchy R, Kristiansen TZ, Jonnalagadda CK, Surendranath V, Niranjan V, Muthusamy B, Gandhi TK, Gronborg M, et al: **Development of human protein reference database as an initial platform for approaching systems biology in humans.** *Genome Res* 2003, **13**(10):2363–2371.
19. Keshava Prasad TS, Goel R, Kandasamy K, Keerthikumar S, Kumar S, Mathivanan S, Telikicherla D, Raju R, Shafreen B, Venugopal A, et al: **Human Protein Reference Database–2009 update.** *Nucleic Acids Res* 2009, **37**(Database issue):D767–D772.
20. *Human Protein Reference Database.* <http://www.hprd.org>.
21. Radvanyi L, Singh-Sandhu D, Gallichan S, Lovitt C, Pedyczak A, Mallo G, Gish K, Kwok K, Hanna W, Zubovits J, et al: **The gene associated with trichorhinophalangeal syndrome in humans is overexpressed in breast cancer.** *Proc Natl Acad Sci U S A* 2005, **102**(31):11005–11010.
22. Finak G, Bertos N, Pepin F, Sadekova S, Souleimanova M, Zhao H, Chen H, Omeroglu G, Meterissian S, Omeroglu A, et al: **Stromal gene expression predicts clinical outcome in breast cancer.** *Nat Med* 2008, **14**(5):518–527.
23. Perou CM, Sorlie T, Eisen MB, van de Rijn M, Jeffrey SS, Rees CA, Pollack JR, Ross DT, Johnsen H, Akslen LA, et al: **Molecular portraits of human breast tumours.** *Nature* 2000, **406**(6797):747–752.
24. Zhao H, Langerod A, Ji Y, Nowels KW, Nesland JM, Tibshirani R, Bukholm IK, Karesen R, Botstein D, Borresen-Dale AL, et al: **Different gene expression patterns in invasive lobular and ductal carcinomas of the breast.** *Mol Biol Cell* 2004, **15**(6):2523–2536.

25. Turashvili G, Bouchal J, Baumforth K, Wei W, Dziechciarkova M, Ehrmann J, Klein J, Fridman E, Skarda J, Srovnal J, *et al*: **Novel markers for differentiation of lobular and ductal invasive breast carcinomas by laser microdissection and microarray analysis.** *BMC Canc* 2007, **7**:55.
26. Uhlen M, Bjorling E, Agaton C, Szgyarto CA, Amini B, Andersen E, Andersson AC, Angelidou P, Asplund A, Asplund C, *et al*: **A human protein atlas for normal and cancer tissues based on antibody proteomics.** *Mol Cell Proteomics* 2005, **4**(12):1920–1932.
27. *Human Protein Atlas*. <http://www.proteinatlas.org/>.
28. *RRBP1 antibody information from Human Protein Atlas*. <http://www.proteinatlas.org/ENSG00000125844/antibody>.
29. *Human Proteinpedia*. <http://www.humanproteinpedia.org>.
30. Mathivanan S, Ahmed M, Ahn NG, Alexandre H, Amanchy R, Andrews PC, Bader JS, Balgley BM, Bantscheff M, Bennett KL, *et al*: **Human Proteinpedia enables sharing of human protein data.** *Nat Biotechnol* 2008, **26**(2):164–167.
31. *RRBP1 expression in normal breast tissue - HUPA*. http://www.humanproteinpedia.org/Experimental_details?exp_id=TE-142796.
32. *RRBP1 expression in breast carcinoma - HUPA*. http://www.humanproteinpedia.org/Experimental_details?can_id=105419.

doi:10.1186/1559-0275-9-7

Cite this article as: Telikicherla *et al*: **Overexpression of ribosome binding protein 1 (RRBP1) in breast cancer.** *Clinical Proteomics* 2012 **9**:7.

**Submit your next manuscript to BioMed Central
and take full advantage of:**

- **Convenient online submission**
- **Thorough peer review**
- **No space constraints or color figure charges**
- **Immediate publication on acceptance**
- **Inclusion in PubMed, CAS, Scopus and Google Scholar**
- **Research which is freely available for redistribution**

Submit your manuscript at
www.biomedcentral.com/submit

