

Effect of high hydrostatic pressure on the expression of glutamine synthetase in rat retinal Müller cells cultured *in vitro*

JUN YU¹, YISHENG ZHONG¹, YU CHENG¹, XI SHEN¹, JUN WANG² and YIYONG WEI²

¹Department of Ophthalmology, and ²Shanghai Institute of Traumatology and Orthopaedics, Ruijin Hospital, Shanghai Jiao Tong University School of Medicine, Shanghai, P.R. China

Received January 25, 2011; Accepted March 16, 2011

DOI: 10.3892/etm.2011.239

Abstract. The aim of the present study was to examine the expression of glutamine synthetase (GS) in rat retinal Müller cells induced by different levels of hydrostatic pressure using a novel pressure mechanism. pH, PCO₂ or PO₂ in culture medium as determined by gas analysis was used to examine the pressure mechanism. GS expression in the Müller cells at different levels of hydrostatic pressure (0, 20, 40, 60 and 80 mmHg/24 h) was examined using immunofluorescence, real-time PCR and Western blotting. There was no significant difference in pH, PCO₂ or PO₂ in the culture medium by gas analysis at the different hydrostatic pressure levels ($p > 0.05$). Immunofluorescence staining showed that GS was expressed in the Müller cells. The expression of GS in the 40 mmHg/24 h and the 60 mmHg/24 h groups was increased significantly compared to that in the 0 mmHg/24 h group ($p < 0.05$). These results suggest that the pressure mechanism which was constructed was effective and that moderate pressure promotes the up-regulation of GS in active Müller cells.

Introduction

Glaucoma is an irreversible, chronic, blinding disease characterized by visual field loss, optic nerve head cupping and retinal ganglion cell loss. Glaucoma is considered the second most prevalent cause of blindness in the world. There are several risk factors associated with glaucoma, such as intraocular pressure (IOP), age, race, family history and vascular disease. Among these, increased IOP is the most common risk factor. Reducing IOP is presently the most accepted and most practiced therapeutical approach for glaucoma patients. However, some patients continue to lose their sight despite apparently adequate pressure control. This suggests that reducing IOP does not provide complete protection, whereas other factors unrelated to IOP may be active (1-4).

Glutamate is a normal constituent of the retina, but in high non-physiological concentrations it causes neuronal damage and death. Normally, glutamate is rapidly removed by Müller cells in the retina (5-8). Glutamine synthetase (GS), an important enzyme located mainly in Müller cells, catalyzes the amidation of glutamate to glutamine. It is one of the major mechanisms for the clearance of extracellular glutamate and in the past has been used as a specific label for Müller cells (8-13).

Although various studies suggest that an increase in vitreal and retinal glutamate levels causes glaucomatous damage (14-16), the issue remains controversial with research data both supporting or opposing this theory. We would expect that elevated IOP leads to an increase in glutamate, or that Müller cells respond normally, which would lead to an increased expression of GS (9,17-22). This study investigated the expression of GS in Müller cells under different pressure *in vitro*.

There are many animal models of glaucoma *in vivo* (23). However, only one type of method is used *in vitro* (24-27). Briefly, a glass chamber or oven is re-equipped into an incubator. This pressure system is complicated and expensive in spite of its classical and extensive use. In the present experiment, a novel pressure mechanism was used, which was simpler and less costly than the previous described method.

Materials and methods

Pressure mechanism. T75 culture flasks were used to construct the pressure mechanism (Fig. 1). An air mixture of 95% air and 5% CO₂ was pumped to obtain the relevant pressure. The pressure level of the model was 0, 20, 40, 60 and 80 mmHg, respectively, in accordance with human IOP in glaucoma, and it was adjusted every 4 h. The time period of the pressure was 24 h. All of the flasks were placed in an incubator at 37°C.

The possibility that the elevated hydrostatic pressure could alter the gas exchange was assessed by analyzing the blood gas in the culture medium in the pressure (20, 40, 60 and 80 mmHg) and control (0 mmHg) culture groups before and after 12 h of pressurization. The tightness was assessed by a pressure gauge.

Cell culture. Experiments were performed on newborn (0-3 days) Sprague-Dawley (SD) rats (Slaccas Laboratory Animal Co., Ltd.). SD rats were decapitated, and their retinas were quickly dissected in cold D-Hank's solution (Anresco).

Correspondence to: Dr Yisheng Zhong and Dr Xi Shen, Department of Ophthalmology, Ruijin Hospital, Shanghai Jiao Tong University School of Medicine, Shanghai, P.R. China
E-mail: yszhong2000@yahoo.com.cn; carl_shen2005@yahoo.com.cn

Key words: glutamine synthetase, pressure mechanism, Müller cells

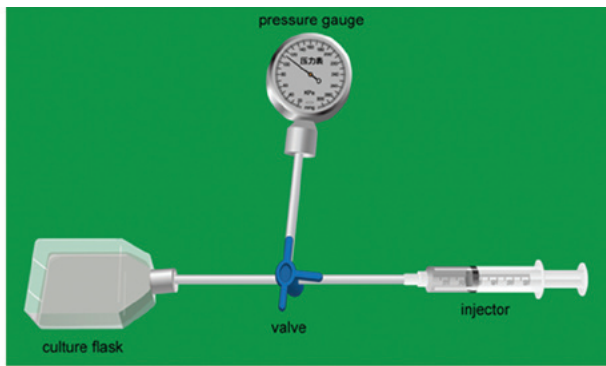


Figure 1. Pressure mechanism. Laboratory film (Pechiney) was used to seal up the interfaces. All of the operations involving refreshment of the medium or adjustment of the pressure were rapidly performed.

The mixture was transferred to sterile centrifuge tubes and centrifuged at 1,000 rpm for 10 min. The supernatant was discarded. Trypsin (0.125%) (Anresco) was added for digestion. The mixture was incubated at 37°C for 15 min. At the end of the designated time, DMEM/F12 medium (Gibco) supplemented with 2 mM glutamine, 100 U/ml penicillin and 100 µg/ml streptomycin and 10% fetal bovine serum (FBS; Sijiqing) was added to terminate the digestion. The digests were filtered using a 200-mesh nylon sieve and centrifuged at 1,000 rpm for 10 min. The supernatant was discarded. The cell suspension was cultured in T75 culture flasks at 37°C in humidified air containing 5% CO₂. When confluent, the cells were washed once with D-Hank's solution, detached from the flask by treatment with 0.125% trypsin, washed with complete cell culture medium and split 1:2 into fresh flasks.

Immunofluorescence. The cells on the coverslips were incubated at 37°C for 1 day and washed three times (10 min/wash) with PBS. The cells were fixed with 4% paraformaldehyde at room temperature for 10 min and incubated with 0.3% Triton X-100 at 37°C for 10 min. The cells were washed three times (10 min/wash) with PBS, blocked with 10% goat serum in PBS and subsequently incubated with a rabbit anti-rat polyclonal antibody against GS (1:5,000; Abcam) as an identity marker for Müller cells. The cells were then incubated overnight at 4°C. The following day, the cells were incubated with the secondary anti-rabbit IgG-Cy3 antibodies (1:200; BioLegend) at 37°C in darkness for 1 h. After three washes with PBS, the cells on the coverslips were mounted on glass slides with

Histomount. The cells were viewed under an Axio microscope, and images were acquired with a digital camera.

Western blot analysis. Fifteen samples, three at each pressure (0, 20, 40, 60 and 80 mmHg/24 h), were used for Western blotting. Cells were washed twice in PBS. The protein concentration was determined by a radioimmunoprecipitation assay and lysed in 2X Laemmli buffer. Protein extracts were boiled for 10 min and centrifuged at 16,000 x g. Proteins were separated on 12% SDS-PAGE and transferred to PVDF membranes (Millipore). The membranes were soaked in Tris-buffered saline (20 mmol/l Tris-Cl, 140 mmol/l NaCl, pH 7.5) containing 5% skimmed milk and 0.1% Tween-20 for 1 h at room temperature. The primary antibody used was GS (1:2,500; Abcam). Blots were incubated with the primary antibody overnight at 4°C. Anti-β-actin antibody (1:3,000; Abcam) was used as a reference to normalize the intensities of the immunoreactions with the different antibodies. Then, after several washes, the membranes were incubated with a secondary antibody against rabbit-IgG (Invitrogen) for 1 h at room temperature in darkness. The protein bands were scanned, and images were quantified with Odyssey (Li-CDR).

Real-time PCR (RT-PCR). Total RNA was isolated from the individual samples using the TRIzol[®] reagent (Invitrogen). The concentration and purity of the RNA preparations were determined by measuring the absorbance at 260/280 nm in a spectrophotometer (Beckman). Total RNA was reverse-transcribed into cDNA in a 20-µl reaction containing 2 µg RNA, 4 µl 5X M-MLV buffer, 2 µl of dNTP, 1 µl random hexamer primer, 0.5 µl of RNase inhibitor and 1 µl of M-MLV RTase. Reactions were performed at 25°C for 10 min, at 42°C for 60 min and at 70°C for 10 min.

The following targets were analyzed by RT-PCR. The nucleotide sequences of the primers were based on published cDNA sequences (Gene Bank). The primer sequences used for RT-PCR were as follows: GS, 5'-ccgctcttcgctcgttc-3' and 5'-ctg cttgatgcctttgtt-3'; β-actin, 5'-cccatctatgagggttacgc-3' and 5'-ttaa atgacgcacgatttc-3'. RT-PCRs were performed on a LightCycler instrument (Rotor Gene) with SYBR Green I, according to the manufacturer's recommendations. Cycling conditions were as follows: initial denaturation at 94°C for 5 min, followed by 40 cycles at 94°C for 30 sec, 55°C for 30 sec and 72°C for 30 sec. The melting curve analysis of the final PCR products was carried out from 50 to 99°C at 1°C intervals.

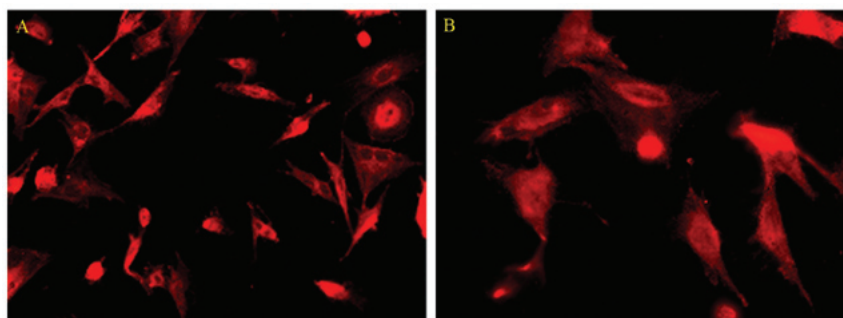


Figure 2. Identification of the Müller cells. Glutamine synthetase (red) was used to label the Müller cells.

Table I. Measurement of pressure, pH, PCO₂ and PO₂ after 12 h.

	Treatment (mmHg)				
	Control	20	40	60	80
Time (h)	12	12	12	12	12
Total pressure (mmHg)	0	19±3	41±2	60±2	78±2
pH	7.69±0.03	7.64±0.02	7.67±0.04	7.65±0.02	7.61±0.03
PO ₂ (mmHg)	168.0±1.9	166.4±1.6	168.0±1.6	164.5±1.5	169.1±2.0
PCO ₂ (mmHg)	27.5±0.4	27.1±0.1	26.5±0.4	25.9±0.4	5.6±0.2

Statistical analysis (Student's unpaired t-test) showed no significant difference in pH, PCO₂ and PO₂ in the different samples ($p>0.05$, $n=3$).

Statistical analysis. Data are presented as the mean ± SD ($n=3-6$ in each group). Data were analyzed using one-way ANOVA followed by the Turkey's test. A p -value of <0.05 was accepted as indicative of statistical significance.

Results

Pressure mechanism. We analyzed pH, PCO₂ or PO₂ from samples of the culture medium 12 h after exposure to the different pressure levels (0, 20, 40, 60 and 80 mmHg). There was no significant difference in these values between the control (0 mmHg) and each pressure (20, 40, 60 and 80 mmHg) group (Table I).

Immunofluorescence. We characterized the cultured rat Müller cells by their expression of GS as assessed by immunocytochemical staining. Cells in the culture system showed positive labeling for GS (Fig. 2). Using this immunocytochemical labeling, the cultured cells were determined to be Müller cells.

Western blot analysis. Western blot analyses of the samples at different pressure showed that the expression of GS protein was variable. The expression of the GS protein in the 20 mmHg/24 h group was decreased compared to the control (0 mmHg/24 h) group. The expression of GS protein was increased in the 40 mmHg/24 h and the 60 mmHg/24 h groups. The expression of GS protein was slightly decreased in the 80 mmHg/24 h group (Fig. 3).

RT-PCR analysis. RT-PCR was performed to examine whether the mRNA expression levels of GS were different among the different pressure groups. Data showed that the expression of GS mRNA was decreased in the 20 mmHg/24 h group compared to the control (0 mmHg/24 h) group. Hereafter, the GS mRNA expression was increased in the 40 mmHg/24 h group which further increased in the 60 mmHg/24 h group, and then decreased in the 80 mmHg/24 h group. However, the difference was only statistically significant between the control (0 mmHg/24 h) and the 40 mmHg/24 h and 60 mmHg/24 h groups, and there was no statistical significance between the control (0 mmHg/24 h) group and the 20 mmHg/24 h and 80 mmHg/24 h groups (Fig. 4). The results of the expression of GS mRNA were in accord with the results of the expression of the GS protein.

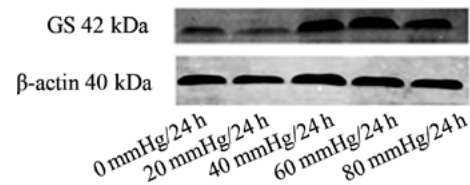


Figure 3. Glutamine synthetase protein expression at different pressures.

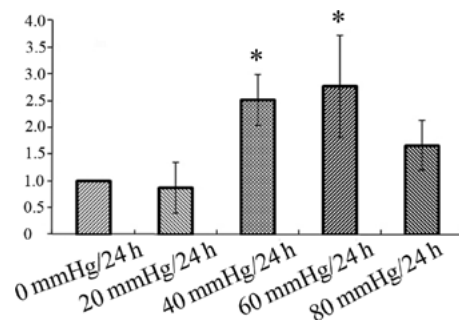


Figure 4. Glutamine synthetase mRNA expression at different pressures (0, 20, 40, 60 and 80 mmHg/24 h). * $p<0.05$ vs. 0 mmHg/24 h.

Discussion

The present results demonstrated that i) the pressure mechanism that we constructed was effective and that ii) moderate pressure promotes the up-regulation of GS in active Müller cells.

In recent years, a number of experimental techniques have been used to chronically raise the IOP in a short period of time. These techniques include laser photocoagulation of the trabecular meshwork, episcleral vein cauterization, episcleral vein injection of hypertonic saline and injection of substances into the anterior chamber to obstruct aqueous outflow (28). Compared to glaucomatous models *in vivo*, *in vitro* models are fewer. In this study, many precautions were taken to limit artifacts from the experimental method. Laboratory film (Pechiney) was used to seal up the interfaces. To avoid artifacts due to 'on-off' changes in pressure, all of the operations involving refreshment of the medium or adjustment of pressure were carried out within 5 min. The results (Table I) showed that the pressure mechanism was effective.

Müller cells are the major glial cells of the retina and constitute a functional link between neurons and vessels. They maintain the integrity of the blood-retinal barrier, remove metabolic waste and maintain the balance of the retinal extracellular environment (ions, water, pH, neurotransmitters). In the normal retina, Müller cells play a crucial role in degrading the level of glutamate. Glutamate taken up by Müller cells is converted, in large part, intracellularly, to glutamine through GS (29-32).

In the present study, the change in GS expression in the Müller cells was variable depending on the change of pressure. At 20 mmHg of pressure, the expression of GS was lower than that in the control. When the pressure was increased to 40 mmHg, the expression of GS was markedly higher (Figs. 3 and 4). The expression level of GS was the highest at a pressure of 60 mmHg and from then the level declined. The present results showed that at an increased hydrostatic pressure, Müller cells may malfunction. However, by further elevating the hydrostatic pressure, Müller cells reacted rapidly, with a return of functionality. Yet, at an excessively high pressure, Müller cells may be damaged. Since Müller cells are the main storage of glycogen (33) and obtain ATP from glycolysis rapidly, long-term exposure to noxious stress (extensively high hydrostatic pressure) which induces ATP depletion, inhibits GS activity.

Although the relationship between the elevated hydrostatic pressure and the increase in glutamate was not determined in the present study, GS up-regulation in Müller cells at a moderate hydrostatic pressure suggests that conversion ability of glutamate in the Müller cells was reinforced. Therefore, we propose that Müller cells adaptively react to GS up-regulation to degrade the level of glutamate at an elevated but moderate hydrostatic pressure.

Acknowledgements

This study was supported by the National Natural Science Foundation of China (no. 81070728), the Shanghai Leading Academic Discipline Project (no. S30205), the Shanghai Municipal Education Committee Project (no. 10YZ38) and the Shanghai Natural Science Foundation (no. 08RZ1413900).

References

- John C and Morrison MD: Integrins in the optic nerve head: potential roles in glaucomatous optic neuropathy. *Trans Am Ophthalmol Soc* 104: 453-477, 2006.
- Bull ND, Limb GA and Martin KR: Human Müller stem cell (MIO-M1) transplantation in a rat model of glaucoma: survival, differentiation and integration. *Invest Ophthalmol Vis Sci* 49: 3449-3456, 2008.
- Quigley HA: New paradigms in the mechanisms and management of glaucoma. *Eye* 19: 1241-1248, 2005.
- Sommer A: Intraocular pressure and glaucoma. *Am J Ophthalmol* 107: 186-188, 1989.
- Carter-Dawson L, Shen F, Harwerth RS, Smith EL, Crawford ML and Chang A: Glutamine immunoreactivity in Müller cells of monkey eyes with experimental glaucoma. *Exp Eye Res* 66: 537-545, 1998.
- Massey SC: Cell types using glutamate as a neurotransmitter in the vertebrate retina. In: *Progress in Retinal Research*. Osborne NN and Chader CJ (eds). Pergamon, Oxford, pp399-425, 1990.
- Pow DV and Robinson SR: Glutamate in some retinal neurons is derived solely from glia. *Neuroscience* 60: 355-366, 1994.
- Ambati J, Chalam KV and Chawla DK: Elevated gamma-aminobutyric acid, glutamate, and vascular endothelial growth factor levels in the vitreous of patients with proliferative diabetic retinopathy. *Arch Ophthalmol* 115: 1161-1166, 1997.
- Shen F, Chen B, Daniais J, Lee KC, Lee H and Su Y: Glutamate-induced glutamine synthetase expression in retinal Müller cells after short-term ocular hypertension in the rat. *Invest Ophthalmol Vis Sci* 45: 3107-3112, 2004.
- Riepe RE and Norenberg MD: Müller cell localization of glutamine synthetase in the rat retina. *Nature* 268: 654-655, 1977.
- Rauen T and Wiebner M: Fine tuning of glutamate uptake and degradation in glial cells: common transcriptional regulation of GLAST1 and GS. *Neurochem Int* 37: 179-189, 2000.
- Linsler PJ, Sorrentino M and Moscona AA: Cellular compartmentalization of carbonic anhydrase-C and glutamine synthetase in developing and mature mouse neural retina. *Brain Res* 315: 65-71, 1984.
- Newman E and Reichenbach A: The Müller cells: a functional element of the retina. *Trends Neurosci* 19: 307-312, 1996.
- Dreyer EB, Zurakowski D, Schumer RA, Podos SM and Lipton SA: Elevated glutamate in vitreous body of humans and monkeys with glaucoma. *Arch Ophthalmol* 114: 299-305, 1996.
- Brooks DE, Garcia GA, Dreyer EB, Zurakowski D and Franco-Bourland RE: Vitreous body glutamate concentration in dogs with glaucoma. *Am J Vet Res* 58: 864-867, 1997.
- Dkhisli O, Chanut E and Wasowicz M: Retinal TUNEL-positive cells and high glutamate levels in vitreous humor of mutant quail with a glaucoma-like disorder. *Invest Ophthalmol Vis Sci* 40: 990-995, 1999.
- Carter-Dawson L, Shen F, Harwerth RS, Smith EL, Crawford ML and Chuang A: Glutamine immunoreactivity in Müller cells of monkey eyes with experimental glaucoma. *Exp Eye Res* 66: 537-545, 1998.
- Li S, Wang J, Wang D and Bai H: The experimental study of effect of pressure on rat Müller cells *in vitro*. *Chin J Ophthalmol* 41: 325-329, 2005.
- Woldemussie E, Wijono M and Ruiz G: Müller cell response to laser-induced increase in intraocular pressure in rats. *Glia* 47: 109-119, 2004.
- Dreyer EB, Zurakowski D, Schumer RA, Podos SM and Lipton SA: Elevated glutamate in vitreous body of humans and monkeys with glaucoma. *Arch Ophthalmol* 114: 299-305, 1996.
- Carter-Dawson L, Crawford ML and Harwerth RS: Vitreal glutamate concentration in monkeys with experimental glaucoma. *Invest Ophthalmol Vis Sci* 43: 2633-2637, 2002.
- Honkanen RA, Baruah S and Zimmerman MB: Vitreous amino acid levels in patients with glaucoma undergoing vitrectomy. *Arch Ophthalmol* 121: 183-188, 2003.
- Johnson TV and Tomarev SI: Rodent models of glaucoma. *Brain Res Bull* 81: 349-358, 2010.
- Agar A, Yip SS, Hill MA and Coroneo MT: Pressure-related apoptosis in neuronal cell lines. *J Neurosci Res* 60: 495-503, 2000.
- Sappington RM, Chan M and Calkins DJ: Interleukin-6 protects retinal ganglion cells from pressure-induced death. *Invest Ophthalmol Vis Sci* 47: 2932-2942, 2006.
- Salvador-Silva M, Ricard CS, Agapova OA, Yang P and Hernandez MR: Expression of small heat shock proteins and intermediate filaments in the human optic nerve head astrocytes exposed to elevated hydrostatic pressure *in vitro*. *J Neurosci Res* 66: 59-73, 2001.
- Tezel G and Wax MB: Hypoxia-inducible factor 1 α in the glaucomatous retina and optic nerve head. *Arch Ophthalmol* 122: 1348-1356, 2004.
- Reichenbach A, Wurm A, Pannicke T, Landiev I, Wiedemann P and Bringmann A: Müller cells as players in retinal degeneration and edema. *Graefes Arch Clin Exp Ophthalmol* 245: 627-636, 2007.
- Walsh N, Valter K and Stone J: Cellular and subcellular patterns of expression of bFGF and CNTF in the normal and light stressed adult rat retina. *Curr Eye Res* 72: 495-501, 2001.
- Harada T, Harada C and Kohsaka S: Microglia-Müller glia cell interactions control neurotrophic factor production during light-induced retinal degeneration. *Neurosci* 22: 9228-9236, 2002.
- Pow DV and Crook DK: Direct immunocytochemical evidence for the transfer of glutamine from glial cells to neurons: use of specific antibodies directed against the D-stereoisomers of glutamate and glutamine. *Neuroscience* 70: 295-302, 1996.
- Johnson TV and Tomarev SI: Rodent models of glaucoma. *Brain Research Bulletin* 81: 349-358, 2010.
- Tsacopoulos M: Metabolic signaling between neurons and glial cells: a short review. *J Physiol Paris* 96: 283-288, 2002.