

The Cardiac Ventricular 5-HT₄ Receptor Is Functional in Late Foetal Development and Is Reactivated in Heart Failure

Trond Brattelid^{1,2,3}, Eirik Qvigstad^{1,2,6}, Lise R. Moltzau^{1,2,6}, Silje V. S. Bekkevoold^{1,2}, Dagny L. Sandnes¹, Jon Arne K. Birkeland^{2,4}, Tor Skomedal^{1,2,6}, Jan-Bjørn Osnes^{1,2,6}, Ivar Sjaastad^{2,4,5,6}, Finn Olav Levy^{1,2,6*}

1 Department of Pharmacology, Faculty of Medicine, University of Oslo and Oslo University Hospital, Oslo, Norway, **2** Center for Heart Failure Research, Faculty of Medicine, University of Oslo, Oslo, Norway, **3** National Institute of Nutrition and Seafood Research, Bergen, Norway, **4** Institute for Experimental Medical Research, University of Oslo and Oslo University Hospital, Oslo, Norway, **5** Department of Cardiology, Oslo University Hospital - Ullevaal, Oslo, Norway, **6** K. G. Jebsen Cardiac Research Centre, Oslo, Norway

Abstract

A positive inotropic responsiveness to serotonin, mediated by 5-HT₄ and 5-HT_{2A} receptors, appears in the ventricle of rats with post-infarction congestive heart failure (HF) and pressure overload-induced hypertrophy. A hallmark of HF is a transition towards a foetal genotype which correlates with loss of cardiac functions. Thus, we wanted to investigate whether the foetal and neonatal cardiac ventricle displays serotonin responsiveness. Wistar rat hearts were collected day 3 and 1 before expected birth (days -3 and -1), as well as day 1, 3, 5 and 113 (age matched with Sham and HF) after birth. Hearts from post-infarction HF and sham-operated animals (Sham) were also collected. Heart tissue was examined for mRNA expression of 5-HT₄, 5-HT_{2A} and 5-HT_{2B} serotonin receptors, 5-HT transporter, atrial natriuretic peptide (ANP) and myosin heavy chain (MHC)- α and MHC- β (real-time quantitative RT-PCR) as well as 5-HT-receptor-mediated increase in contractile function *ex vivo* (electrical field stimulation of ventricular strips from foetal and neonatal rats and left ventricular papillary muscle from adult rats in organ bath). Both 5-HT₄ mRNA expression and functional responses were highest at day -3 and decreased gradually to day 5, with a further decrease to adult levels. In HF, receptor mRNA levels and functional responses reappeared, but to lower levels than in the foetal ventricle. The 5-HT_{2A} and 5-HT_{2B} receptor mRNA levels increased to a maximum immediately after birth, but of these, only the 5-HT_{2A} receptor mediated a positive inotropic response. We suggest that the 5-HT₄ receptor is a representative of a foetal cardiac gene program, functional in late foetal development and reactivated in heart failure.

Citation: Brattelid T, Qvigstad E, Moltzau LR, Bekkevoold SVS, Sandnes DL, et al. (2012) The Cardiac Ventricular 5-HT₄ Receptor Is Functional in Late Foetal Development and Is Reactivated in Heart Failure. PLoS ONE 7(9): e45489. doi:10.1371/journal.pone.0045489

Editor: Maurizio Pesce, Centro Cardiologico Monzino, Italy

Received: April 15, 2011; **Accepted:** August 23, 2012; **Published:** September 20, 2012

Copyright: © 2012 Brattelid et al. This is an open-access article distributed under the terms of the Creative Commons Attribution License, which permits unrestricted use, distribution, and reproduction in any medium, provided the original author and source are credited.

Funding: This work has been supported by The Norwegian Council on Cardiovascular Disease, The Research Council of Norway, Stiftelsen Kristian Gerhard Jebsen, Anders Jahre's Foundation for the promotion of Science, The Novo Nordisk Foundation, The Simon Fougner Hartmann Family Foundation and The Family Blix Foundation. The funders had no role in study design, data collection and analysis, decision to publish, or preparation of the manuscript.

Competing Interests: The authors have declared that no competing interests exist.

* E-mail: f.o.levy@medisin.uio.no

Introduction

The mRNA expression of several cardiac G-protein-coupled receptors is altered in heart failure (HF) [1]. A hallmark of the cardiac remodelling in heart failure is activation of a foetal gene program, which reflects an adaptive or possibly maladaptive response to various pathophysiological stimuli such as haemodynamic stress and altered neurohumoral activation [2]. Characteristic changes observed in the failing heart such as a switch from myosin heavy chain (MHC)- α to MHC- β [3], altered fatty acid and glucose energy metabolism [4] and increased production of natriuretic peptides are all features of a foetal phenotype.

Detection of genes encoding proteins involved in foetal cardiac development should enable a better understanding of cardiac remodelling as they are involved in neurohumoral signalling activated during heart failure. Components of the foetal gene program, reactivated in heart failure, represent potential therapeutic targets in the treatment of heart failure [5].

Serotonin (5-HT) is a key molecule in the early embryogenesis [6] and acts as a trophic signal during embryonal heart development [7]. However, although direct cardioexcitation by 5-HT was initially not observed in the normal adult cardiac ventricle in either man [8,9] or rat [10], we found an upregulated 5-HT₄ receptor mRNA level accompanied by a 5-HT₄-mediated positive inotropic response to 5-HT in the cardiac ventricle of failing human hearts [11] as well as both infarcted, failing and hypertrophic rat hearts [12,13]. Interestingly, coronary artery disease and heart failure is associated with an increase in the plasma level of 5-HT [14,15,16,17]. The 5-HT₄ receptor might also be a potential therapeutic target, and long-term addition of the potent, selective 5-HT₄ receptor antagonist piboserod to standard treatment in patients with chronic HF increased left ventricular ejection fraction (LVEF) compared to standard treatment alone [18]. In acute rat heart failure robust cardioexcitatory effects of serotonin rapidly appear and levels of mRNA encoding both 5-HT₄ and 5-HT_{2A} increase [19]. Thus, in the

cardiac ventricle the transition from a non-diseased heart to a failing phenotype is accompanied by substantial alterations in the 5-HT signalling system.

The recognition that genes activated during HF may be a part of a late foetal gene program dominated by hypertrophic growth and that 5-HT plays a trophic role in cardiac embryonal development [7] implies a potential role of 5-HT receptors in the function of both the foetal and failing heart. Thus the induction of serotonin responsiveness during heart failure may represent a reactivation of a foetal gene expression pattern.

We here demonstrate that 5-HT₄ receptor mRNA expression and 5-HT₄-mediated inotropic response are augmented, not only in HF, but also in late foetal development, indicating that the 5-HT₄ receptor gene is a representative of a late stage foetal cardiac gene program. In addition, we found that both 5-HT_{2A} and 5-HT_{2B} receptor mRNAs were increased at the time of birth, but only the former mediated an inotropic response.

Materials and Methods

The study conforms to the Guide for the Care and Use of Laboratory Animals published by the US National Institutes of Health (NIH Publication No. 85–23, revised 1996) and the Norwegian National Guidelines for Research Ethics in Science and Technology. The experimental protocol was approved by the Norwegian Animal Research Authority (approval ID 2/05), and all procedures described were performed in accordance with their recommendations.

Pregnant rats and mothers with litters were kept in separate cages whereas two adult male rats were kept in each cage and housed in a temperature-regulated room on 12 h:12 h day/night cycle. The animals were given access to food and water *ad libitum*.

Heart tissue was collected from foetal rats 3 days and 1 day before expected birth (days -3 and -1) and neonatal rats 1, 3 and 5 days after birth (days 1, 3 and 5) as well as from 113-day-old rats (age matched with Sham and HF rats 6 weeks after infarction as described below), used as adult controls. An extensive myocardial infarction was induced by coronary artery ligation as described [20] in male Wistar rats (320 g; Møllegaard Breeding and Research Center, Skensved, Denmark) anaesthetised with 68% N₂O, 29% O₂ and 2–3% isoflurane (Abbot Park, Illinois, USA), and ventilated on a respirator (Zoovent, Triumph Technical Services, Milton Keynes, UK). Six weeks after surgery the rats were again anaesthetised, ventilated, assessed by echocardiography, and subsequently subjected to haemodynamic measurements as previously described [20]. The rats were sacrificed 6 weeks after surgery, and only those LAD operated rats with HF (n = 20 out of 25 rats operated; Table 1) were included in the study.

Radioligand Binding Assay

Binding assays were performed on membranes of neonatal and adult cardiac ventricle using [³H]GR113808 (0.1–0.5 nM) or [¹²⁵I]SB207710 (0.004–0.5 nM) as radioligands in the absence and presence of 5-HT (100 μM) by different methods, either essentially as described by Bach et al. [21], where bound and free radioligand were separated by filtration, or using precipitation with IgG-polyethylene glycol to separate bound from free radioligand [22]. Binding assay in isolated neonatal ventricular cardiomyocytes (1.2–1.5 × 10⁶ cells/well) was performed in 6-well plates. Cells were scraped in Hanks' Balanced Salt Solution and the cell suspension filtered through Whatman GF/A filters as described previously [23].

Table 1. Animal characteristics of Sham and HF rats.

	Sham (n = 9)	HF (n = 20)
Body weight, g	380 ± 10	374 ± 10
Heart weight, g	1.42 ± 0.04	2.51 ± 0.10***
Heart weight/body weight, g/kg	3.74 ± 0.14	6.71 ± 0.32***
Lung weight, g	1.41 ± 0.04	4.33 ± 0.20***
LVEDP, mmHg	4 ± 1.3	23 ± 1.6***
LVSP, mmHg	101 ± 5	88 ± 4*
LVDd, mm	7.3 ± 0.3	10.3 ± 0.1
LVFS, %	54.6 ± 1.9	13.4 ± 0.9***
LAD, mm	4.9 ± 0.2	8.5 ± 0.3***

Animal characteristics are given as mean values ± SEM. LVEDP, left ventricular end diastolic pressure; LVSP, left ventricular systolic pressure; LVDd, left ventricular diameter diastole; LVFS, left ventricular fractional shortening; LAD, left atrial diameter;

*HF vs. Sham p < 0.05;

***HF vs. Sham p < 0.001.

doi:10.1371/journal.pone.0045489.t001

Real-time Quantitative Reverse Transcriptase Polymerase Chain Reaction (RT-PCR)

Foetal and neonatal cardiac ventricular tissue for RT-PCR was collected immediately after sacrifice of foetal rats 3 days (n = 6) and 1 day (n = 5) before expected birth (days -3 and -1) and neonatal rats 1 (n = 10), 3 (n = 6) and 5 (n = 6) days after birth (days 1, 3 and 5). In HF rats (n = 6) non-infarcted LV tissue (mostly septum) was collected immediately after measurement of LV weight. Corresponding LV tissue was collected from Sham (n = 5) and age matched 113-day-old normal rats (n = 5). Cardiac tissue was stored in RNAlater (Ambion). Total RNA was isolated from tissue homogenised in Trizol (1 ml/100 mg tissue, Invitrogen) with a mill homogeniser (Retch MM301, Retsch) and DNase treated (RQ1, Promega). The cDNA was synthesised from 5 μg total RNA (OD_{260/280 nm} > 1.9 and RIN values > 7.5) primed with oligo-dT (500 ng) using 400 U Superscript III reverse transcriptase (Invitrogen) in a 40 μl reaction at 50°C. A standard curve with 0.5–10 μg total RNA was made to control for reverse transcription and PCR quantification. Reactions without reverse transcriptase were run in parallel to control for contamination with chromosomal DNA. Sets of primers and probes were used to examine the cardiac ventricular mRNA expression of the 5-HT_{4(b)} (the most abundant cardiac 5-HT₄ receptor splice variant [24]), 5-HT_{2A} and 5-HT_{2B} serotonin receptors, serotonin transporter (5-HTT [25]) and ANP [1,12] in addition to both MHC-α and MHC-β mRNA [26].

The standard curve method was used to calculate individual expression level for each mRNA analysed [27]. Each target gene was normalised to the geometric mean of Arbp (acidic ribosomal phosphoprotein P0; M = 0.289), Tbp (TATA box binding protein; M = 0.355), Rpl4 (Ribosomal protein L4; M = 0.275) and Rpl32 (Ribosomal protein L32; M = 0.364) for each sample by the method of Vandesompele et al. [28] and described by Brattelid et al. [25].

The mean value of mRNA levels in 113-day-old and Sham hearts were assigned the value 1 to simplify comparison of mRNA with foetal/neonatal and HF, respectively.

Contractility of Cardiac Muscles

Heart ventricles from foetal rats 3 days ($n = 12$) and 1 day ($n = 9$) prior to expected delivery and from rats aged 3 ($n = 9$), 9 ($n = 12$) and 20 ($n = 8$) days, as well as posterior left ventricle papillary muscles from HF ($n = 20$), Sham ($n = 15$) and 113-day-old ($n = 13$) rats were isolated and prepared for functional analyses.

Contraction-relaxation cycles (CRCs) were recorded and analysed as previously described [29] with respect to maximal developed force (F_{\max}) and maximal rate of force development $(dF/dt)_{\max}$. Inotropic responses to agonists were expressed as percent increases in $(dF/dt)_{\max}$. The experiments were performed in the presence of blockers (added 90 min prior to agonist) of adrenergic (α_1 , prazosin 0.1 μM , K_d 0.2 nM [30]; β , timolol 1 μM ; K_d 0.8 nM [31]) and muscarinic cholinergic (atropine 1 μM , K_d 4.2 nM [32]) receptors. Serotonin was added to the organ bath as a single concentration (10 μM) to give a complete activation of the serotonin receptors. The response was measured after 2–7 minutes, when fully developed, as previously demonstrated [19]. To separate between different 5-HT receptor responses, the 5-HT_{2A} receptor antagonist ketanserin (0.1 μM ; K_d 0.8 nM [33]) or the 5-HT₄ receptor antagonist GR113808 (1 μM ; K_d 0.09 nM [34]) or both were added 90 min prior to agonist to completely antagonise the positive inotropic response mediated through 5-HT_{2A} or 5-HT₄, respectively [19]. Neither GR113808 nor ketanserin influenced basal contraction-relaxation cycle (CRC) characteristics or electrical stimulation threshold.

Statistics

Data are expressed as mean \pm SEM from n animals. $P < 0.05$ was considered statistically significant. Nonparametric Mann-Whitney test was used when evaluating mRNA expression level and paired t-test when evaluating drug response.

Results

Characteristics of Foetal and Failing Hearts

The expression profiles of ANP, MHC- α and MHC- β mRNA (Figure 1) are in line with previous data [12,26,35] indicating reactivation of a “foetal gene programme” in HF. The changes in ratio of MHC- β to MHC- α (Figure 1) are also consistent with the transition from a foetal to a neonatal phenotype as well as the development of HF [36].

Of the LAD-ligated rats, the 20 rats included in the HF group had large anterolateral infarcts and signs of congestive HF including tachypnea, pleural effusion and pulmonary congestion. Left ventricular diameter was substantially increased with reduced systolic performance (Table 1). Also, the HF rat had increased LVEDP, increased left atrial diameter and increased lung weight, all signifying congestive heart failure. For rat characteristics and haemodynamic data, see Table 1.

Expression of 5-HT₄ Receptor mRNA

The 5-HT₄ mRNA expression level decreased through foetal and neonatal development from day -3 to day 5 and reached a minimum in normal adult heart (Figure 2A). In the failing adult ventricle the 5-HT₄ receptor expression level was increased 8-fold compared to Sham. Although the increased expression level of 5-HT₄ in HF seems lower compared to that observed in foetal cardiac ventricle, it is rather similar to the neonatal phenotype and in line with previous observations in HF [1,13].

The cardiac 5-HT₄ receptor mRNA expression was related to the MHC- β /MHC- α mRNA expression ratio, which is an indicator of cardiac development (Figure 3). Accordingly, both 5-HT₄ mRNA and MHC- β /MHC- α mRNA expression ratio

were low in cardiac tissue from postnatal, adult and Sham rats and higher in prenatal, newborn and HF rat hearts.

Binding of [³H]-GR113808 and [¹²⁵I]-SB207710 to 5-HT₄ receptors was tested with different methods and several approaches to define specific binding in neonatal ventricular preparations. In general, the total binding barely exceeded the non-specific binding, and the estimated specific binding varied between 0 and 2, or 0 and 4 fmol/mg membrane protein for [³H]-GR113808 and [¹²⁵I]-SB207710 respectively, with too much variability to allow a robust quantification or further characterisation.

5-HT₄-mediated Inotropic Response

Serotonin stimulation in the foetal and neonatal ventricular tissue resulted in a robust positive inotropic response (Figure 4A) which was effectively antagonised by the selective 5-HT₄ antagonist GR113808 (1 μM , Figure 5 middle panels). However, at day 9 the 5-HT₄-mediated inotropic response decreased dramatically and decreased further to an essentially undetectable response in left ventricle of the adult (113-day-old) animals and Sham. In CHF the 5-HT₄-mediated inotropic response increased to levels observed immediately after birth. As previously found in HF [1,13], the 5-HT₄-mediated inotropic response in neonatal rat ventricle was associated with a lusitropic response (hastened relaxation), consistent with a cAMP-mediated mechanism (Figure 5 middle right panel).

mRNA Expression and Function of the 5-HT_{2A} and 5-HT_{2B} Receptors

We observed that the ventricular 5-HT_{2A} mRNA expression transiently increased more than 2-fold at birth from the foetal level and gradually returned to this level in the adult heart (Figure 2B). In HF there was no change in the 5-HT_{2A} mRNA expression level compared to Sham. The 5-HT_{2A}-mediated inotropic response, which was about half the size of the 5-HT₄ response in foetal heart (day -3), decreased after a transient increase at birth and was almost negligible in adult non-failing and Sham ventricle (Figure 4B). In adult failing ventricle the 5-HT_{2A}-mediated inotropic response reappeared to about one third of the 5-HT₄-mediated inotropic response. As previously described in HF and hypertrophy [1,13], the 5-HT_{2A}-mediated inotropic response in neonatal rat ventricle was not associated with a lusitropic response (Figure 5 bottom right panel), consistent with a non-cAMP-dependent mechanism, probably dependent on myosin light chain phosphorylation as demonstrated in HF [13].

The ventricular 5-HT_{2B} mRNA expression increased transiently at birth but not in HF (Figure 2C). The positive inotropic response in ventricles to 10 μM 5-HT was totally abolished in the presence of concomitant 5-HT₄ (GR113808, 1 μM ; K_i at human 5-HT_{2B}: 0.87 μM [37]) and 5-HT_{2A} (ketanserin, 0.1 μM ; K_i at rat 5-HT_{2B}: 3.56 μM [38]) blockade demonstrating the absence of any contribution from 5-HT_{2B} receptors to the inotropic response (Figure 5 upper panels).

Development of Inotropic Effect of β -adrenergic Receptors

The inotropic response to stimulation of β -adrenergic receptors did not change significantly from late foetal through neonatal development and was also quite similar in adult heart (Figure 4C). As expected, the β -AR-mediated inotropic response decreased in the failing heart (Figure 4C) [20].

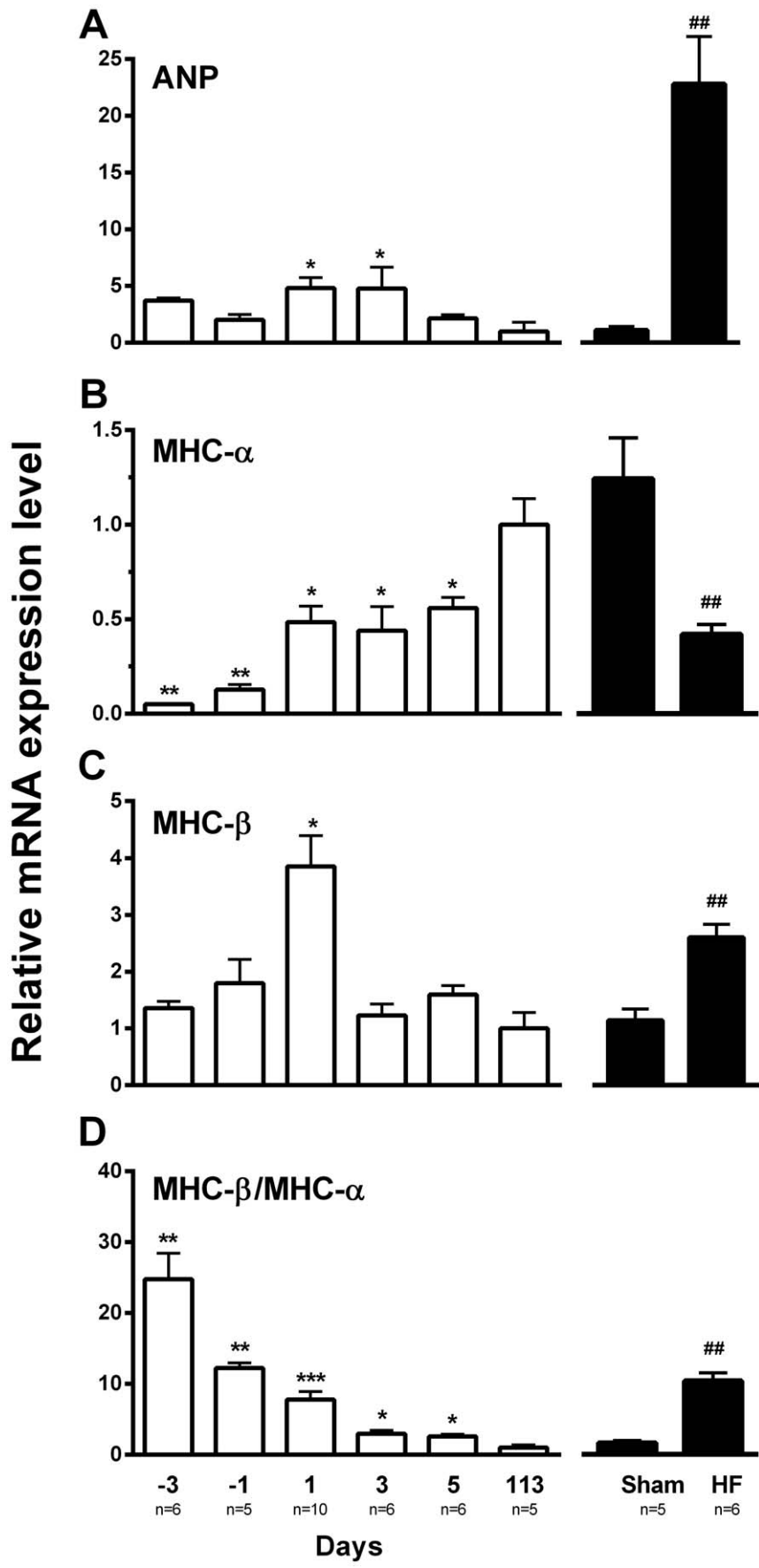


Figure 1. Expression profiles of mRNA markers of cardiac phenotypes. Messenger RNA expression in cardiac ventricles from foetal (day 3 and 1 before expected birth; days -3 and -1), neonatal (day 1, 3 and 5 after birth; days 1, 3 and 5), adult (day 113), Sham and HF rats. (A) Expression of ANP mRNA increases at birth and in HF; (B) MHC- α mRNA expression increases at birth and during transition from neonatal to adult and decreases in HF; (C) MHC- β mRNA expression demonstrates a transitional increase at birth and an increase in HF; (D) The ratio of MHC- β over MHC- α mRNA expression confirms transition in phenotype from foetal to adult and from Sham to HF. The results are normalised to the geometric mean of Arbp, Tbp, Rpl4 and Rpl32 and presented relative to day 113 (assigned value 1) for foetal and neonatal, and to Sham (assigned value 1) for HF. *vs. day 113 $p < 0.05$; **vs. day 113 $p < 0.01$; ***vs. day 113 $p < 0.001$; ##HF vs. Sham $p < 0.01$. doi:10.1371/journal.pone.0045489.g001

Serotonin Transporter mRNA Levels

We observed a lower level of 5-HTT mRNA expression in the foetal stages analysed compared to adult (Figure 2D). After birth the 5-HTT mRNA expression level was rather similar in neonatal, adult and HF rat hearts (Figure 2D).

Discussion

In this study we focused on whether the 5-HT receptor mRNA expression and function in late foetal and neonatal heart ventricle resemble those observed in HF in adult rats.

Cardiac Regulation of 5-HT₄ Receptor in Foetal Development and Heart Failure

The failing heart has been associated with a foetal genotype [2] and the increased 5-HT₄ gene expression and concomitant 5-HT₄-mediated inotropic response to serotonin previously demonstrated in the ventricles of failing rat heart [12,13] is also observed in late foetal cardiac development (Figure 2 and Figure 3). Thus, the 5-HT₄ mRNA expression level and the corresponding 5-HT₄-mediated inotropic response accompany each other through the different developmental stages of the heart and in HF. The presence of robust 5-HT₄ responses in the foetal/neonatal cardiac ventricle implies a role of the 5-HT₄ receptor in cardiac development. The importance of their re-expression in failing ventricle has been evaluated in other studies [13,26].

Other lines of evidence also suggest a functional role of the 5-HT₄ receptor in the foetal heart. Offspring of female mice immunised with a peptide corresponding to the second extracellular loop of the human 5-HT₄ receptor developed foetal and neonatal arrhythmia, as well as ataxia [39]. However, the impact of this 5-HT₄ receptor autoimmunity on cardiac function remains uncertain.

Neonatal cardiomyocytes are an attractive model system to characterise several aspects of cardiac function at the cellular level [40,41,42]. Importantly, since neonatal rat hearts express functional 5-HT₄ receptors linked to inotropic effects, it should be further evaluated whether neonatal rat cardiomyocytes may serve as a useful model for cardiomyocytes from failing rat hearts as well as from the less available failing human hearts in studies of cardiac 5-HT₄ receptor function.

Cardiac Regulation of 5-HT_{2A} and 5-HT_{2B} Receptors in Foetal Development and Heart Failure

Pathways activated by G_q/G₁₁-coupled receptors play essential roles in the development of cardiac hypertrophy [43]. The G_q-coupled 5-HT_{2A} and 5-HT_{2B} [44] found in cardiomyocytes [44,45,46] and non-cardiomyocytes [12,47] could mediate cardiac growth and hypertrophy in cardiac development as well as in heart failure.

In the hypertrophic heart we have reported an increase in 5-HT_{2A} mRNA expression and 5-HT_{2A}-mediated inotropic response [12]. 5-HT_{2A} might therefore be part of a cardioprotective mechanism. The transient increase in ventricular 5-HT_{2A} mRNA and 5-HT_{2A} receptor-mediated inotropic responses around birth resembles

previous observations in acute HF [19], a pathological condition with an acute increase in wall stress. At the time of birth the heart is also exposed to an acute increase in wall stress associated with the circulatory changes around birth [48]. It is therefore tempting to suggest that the 5-HT_{2A} receptor might play an important role in response to the acute increase in wall stress observed at birth and in acute heart failure. In chronic HF however, there is an increase in the 5-HT_{2A}-mediated inotropic response (Figure 4B) which does not coincide with an increase in the 5-HT_{2A} mRNA expression (Figure 2B). Thus chronic HF might induce other regulatory mechanisms which increase 5-HT_{2A}-mediated contractility without increasing the mRNA level.

The coincidence of the increase in 5-HT_{2B} mRNA at time of birth associated with an increased left ventricular output [48] can suggest a possible involvement of non-cardiomyocyte localised 5-HT_{2B} receptors in development and progression of cardiac hypertrophy as suggested previously [12]. Jaffrè et al [49] revealed that the 5-HT_{2B} receptor in cardiac non-cardiomyocytes is pivotal in angiotensin and adrenergic receptor mediated hypertrophy. This was supported by recent findings where the 5-HT_{2B} antagonist SB204741 had anti-hypertrophic effects in an isoproterenol-induced rat hypertrophy model [50].

Even though GR113808 and ketanserin have some affinity at 5-HT_{2B} receptors, at the concentrations used in the contractility assay they would not block these receptors significantly in the presence of 10 μ M 5-HT, which is about 1000-fold the EC₅₀ value of 5-HT at human 5-HT_{2B} receptors (8.95 nM according to Wainscott et al [51]). Thus, a 5-HT_{2B}-mediated inotropic response to 5-HT would have been demonstrated, if present.

Cardiac Regulation of β -adrenergic Receptor in Foetal Development and Heart Failure

Although the β -adrenergic receptor density has been shown to be regulated during foetal and neonatal development [52] the functional β -adrenergic response did not show significant changes during late foetal and postnatal development (Figure 4C).

Cardiac Regulation of Serotonin Transporter in Foetal Development and Heart Failure

The role of 5-HT receptors in cardiac tissue will depend on the availability of endogenous 5-HT, most likely determined by the plasma level of 5-HT and 5-HTTs present locally. The trophic 5-HT signal in foetal cardiomyocytes has been shown to be concentration dependent (with an optimum at 4 μ M) under control of the 5-HTT activity [7]. There is evidence for an increase in plasma level of 5-HT in coronary artery disease and events [14] and in hypertension [53]. Inhibiting the 5-HTT with a serotonin reuptake inhibitor in Sham and failing hearts did not alter the inotropic response (data not shown). A functional role of 5-HTT in the failing heart thus remains elusive.

Limitations

The data presented here is based on functional observations of the inotropic response in cardiac tissue due to pharmacological stimulation and inhibition of the 5-HT₄ receptor. Demonstration of

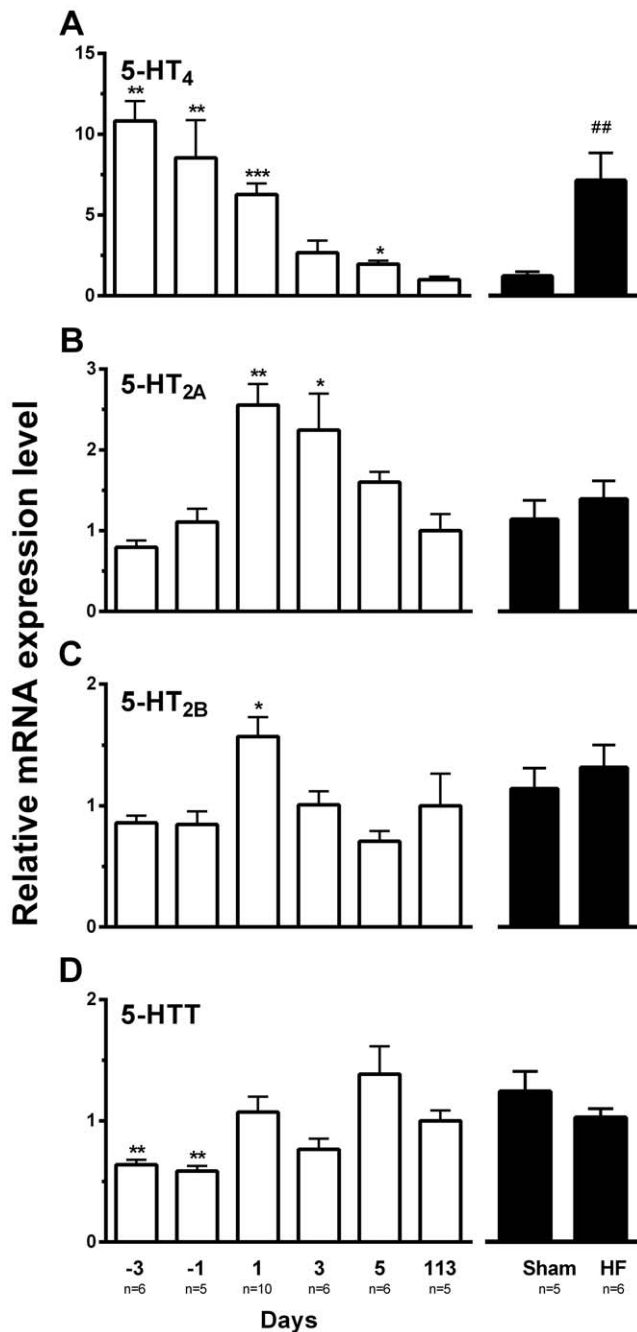


Figure 2. Expression of 5-HT_{4(b)}, 5-HT_{2A}, 5-HT_{2B} and 5-HTT mRNA in left ventricular myocardium. Messenger RNA expression in cardiac ventricles from foetal (day 3 and 1 before expected birth; days -3 and -1), neonatal (day 1, 3 and 5 after birth; days 1, 3 and 5), adult (day 113), Sham and HF rats. (A) 5-HT_{4(b)} mRNA levels decreased with foetal and neonatal development and the level in adult myocardium was one tenth of that at day -3 but reappeared in HF; (B) 5-HT_{2A} mRNA expression increased at birth (day 1), decreased during neonatal development and was unaltered in HF; (C) 5-HT_{2B} mRNA expression was transiently increased at birth (day 1) compared to adult (day 113) and not changed in HF; (D) 5-HTT mRNA expression was lower in foetal hearts compared to neonatal, adult, Sham and HF which all showed a similar expression level. The results are normalised to the geometric mean of Arbp, Tbp, Rpl4 and Rpl32 and presented relative to day 113 (assigned value 1) for foetal and neonatal or to Sham (assigned value 1) for HF. *vs. day 113 $p < 0.05$; **vs. day 113 $p < 0.01$; ***vs. day 113 $p < 0.001$; ##HF vs. Sham $p < 0.01$. doi:10.1371/journal.pone.0045489.g002

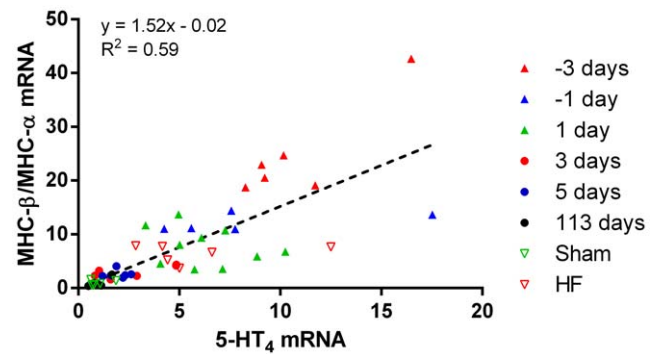


Figure 3. Correlation between the MHC-β/MHC-α mRNA expression ratio and the 5-HT₄ mRNA expression level in ventricles from foetal and neonatal hearts and left ventricular papillary muscles from 113-day-old, Sham and HF rats. The ratio of MHC-β to MHC-α mRNA levels and 5-HT₄ mRNA level showed a proportional relationship with a slope which significantly deviated from zero, $p < 0.0001$ (linear regression analysis). doi:10.1371/journal.pone.0045489.g003

the 5-HT₄ receptor protein expression in the cardiac tissue would also be of interest. With both [³H]GR113808 and [¹²⁵I]SB207710 we were not able to detect specific binding corresponding to 5-HT₄ receptors in the cardiac ventricle tissue samples analysed. This is in line with our inability in previous studies to quantify specific 5-HT₄ receptor levels in failing cardiac ventricle [12,13]. In the human heart the expression of the 5-HT₄ receptor is very low (<4 fmol per mg protein in right atrium) [54]. An even lower level of the 5-HT₄ receptors in the ventricle and possible species differences complicates the ability to demonstrate the presence of cardiac 5-HT₄ receptors with currently available methods. Although the ability to label new 5-HT₄ receptor antagonists with even higher selectivity and affinity for the 5-HT₄ receptor [55] and lower non-specific binding might improve future binding assays, the density of 5-HT₄ receptors in cardiac ventricle will remain low and likely near the limit of proper quantification. In a previous publication [56] we have demonstrated similar slopes of standard curves used to determine 5-HT₄ mRNA expression in hippocampus and cardiac left ventricle. The difference in crossing point were ~8 Cp's, representing approximately 250-fold difference in mRNA level between the hippocampus and heart [56]. Hippocampus expresses about 120 fmol 5-HT₄ receptors per mg protein [57]. Assuming similar ratios between mRNA and protein, the corresponding protein level of the 5-HT₄ receptor in the heart can be estimated to about 0.5 fmol per mg protein, which would be below the limit of detection with the radiolabeled ligands available. Since 5-HT₄ receptor protein is clearly below the level of detection with available radioligand binding methods, the presence of the protein and its level of expression in this and previous studies had to be inferred from its functional effects on contractility. Since 5-HT₄ receptor stimulation in previous studies (e.g. [13,58]) was shown to produce a submaximal inotropic response compared to beta-adrenoceptor stimulation, a reasonable correlation between receptor expression levels and the maximal 5-HT₄-mediated inotropic response can be inferred, and we are therefore interpreting an increasing maximal 5-HT₄-mediated inotropic response to reflect increasing 5-HT₄ receptor protein levels.

At present nine 5-HT₄ receptor splice variants differing in the C-terminus have been described [59]. We have only monitored the gene expression of the most abundant 5-HT₄ receptor splice variant 5-HT_{4(b)} [24]. It might therefore be possible that other 5-HT₄ receptor splice variants are regulated and contribute to the total 5-HT₄ receptor level and effects during cardiac development and CHF.

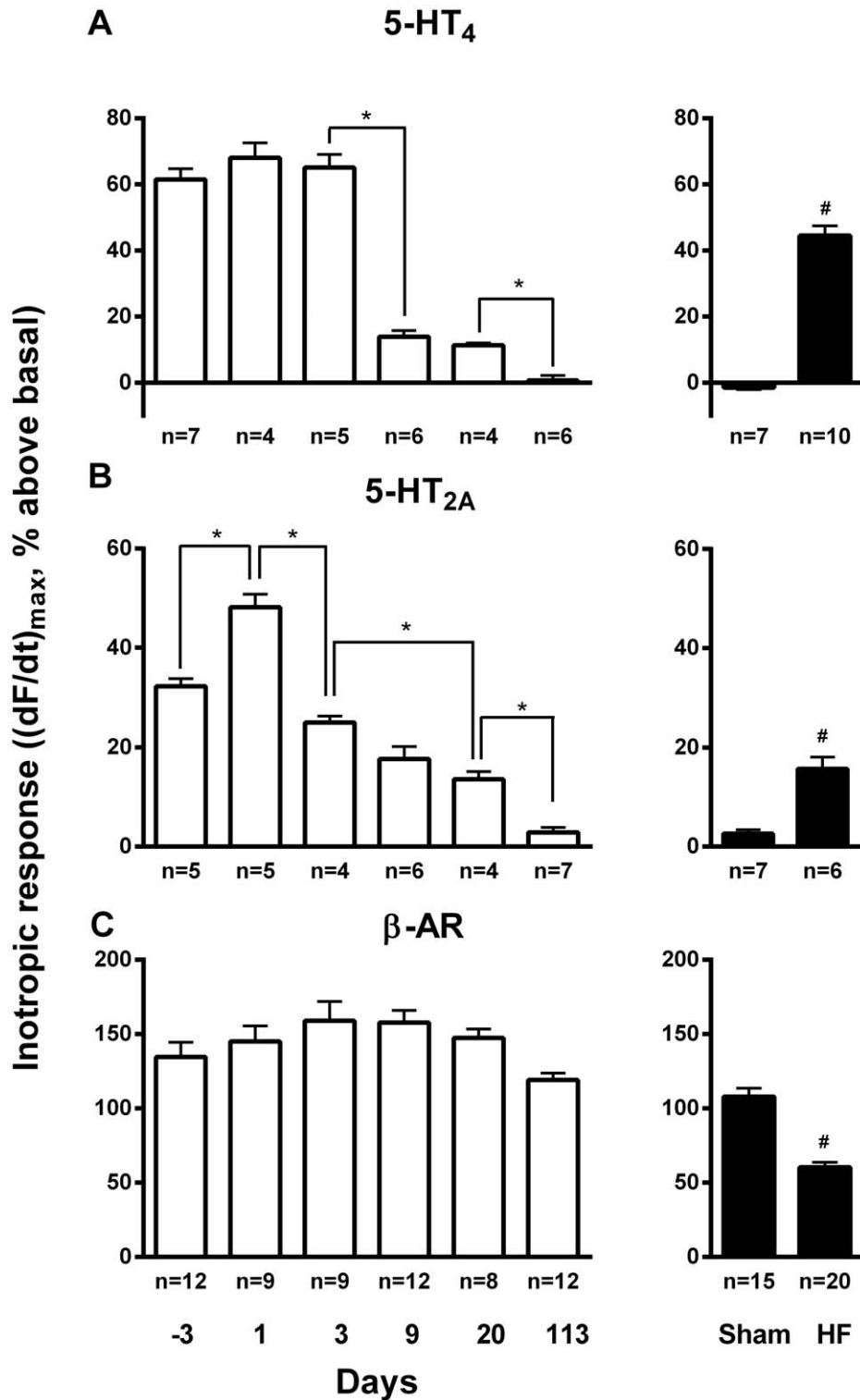


Figure 4. Inotropic responses to serotonin and to isoproterenol in ventricles from foetal and neonatal hearts and left ventricular papillary muscles from 113-day-old, Sham and HF rats. Positive inotropic response to serotonin (10 μ M) in ventricles from foetal and neonatal rats and papillary muscles from normal adult (day 113), Sham and HF rats driven at 1 Hz in the presence of prazosine (0.1 μ M), timolol (1 μ M) and atropine (1 μ M); ketanserin (0.1 μ M); A) or GR113808 (1 μ M); B) and inotropic response to subsequent addition of isoproterenol (100 μ M); C). The contractile response to serotonin or isoproterenol was measured after stabilisation at its maximum within 2–7 minutes as previously demonstrated [13]. Panels show maximum inotropic response in % above basal. *vs. group indicated $p < 0.05$; #HF vs. Sham $p < 0.05$. doi:10.1371/journal.pone.0045489.g004

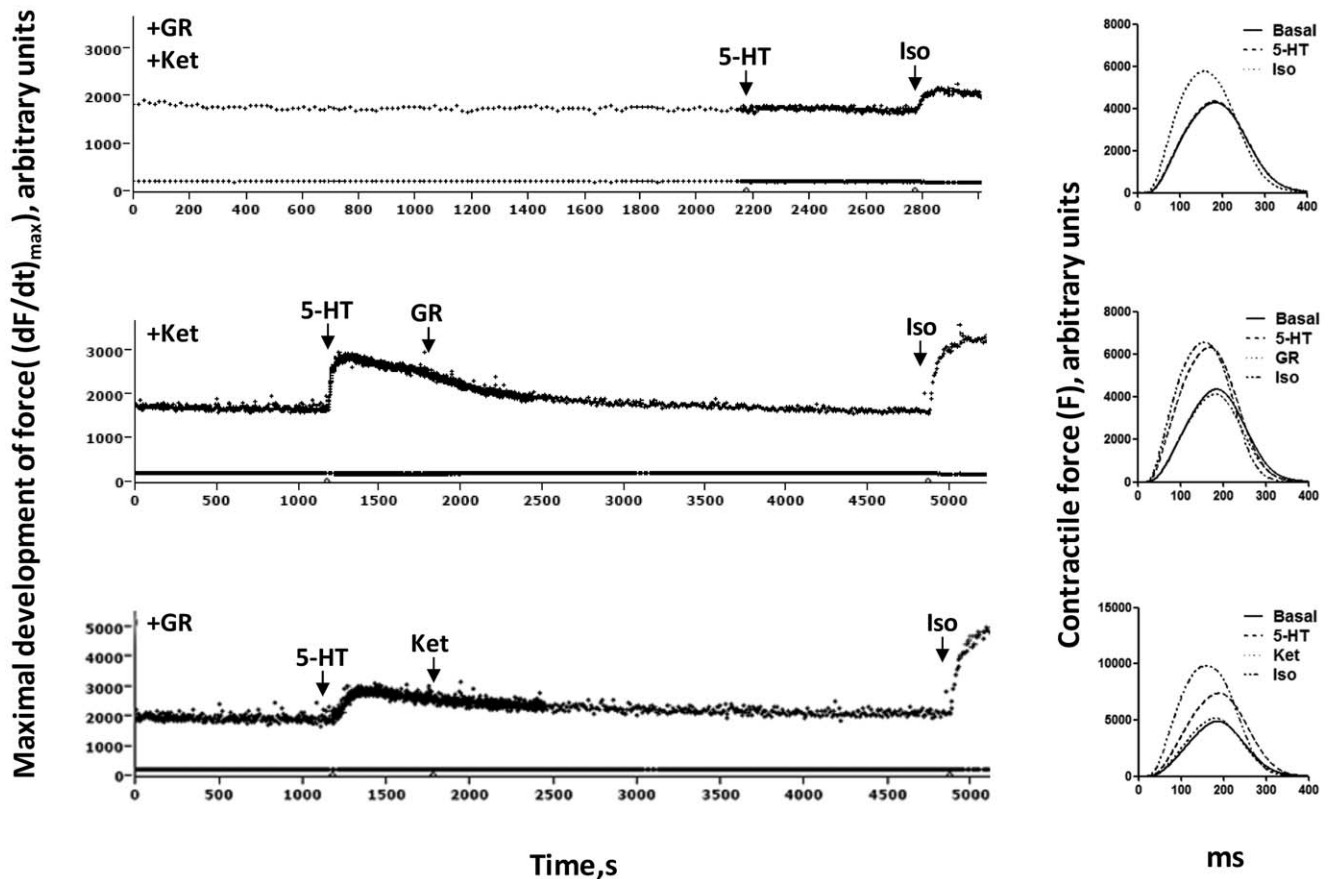


Figure 5. Original tracings of changes in contractility (left panels) as well as averaged contraction-relaxation cycles (right panels) illustrating the effects of 5-HT, GR113808 (GR), ketanserin (Ket) and isoproterenol (Iso) in ventricles from 3-day-old rats. *Upper left panel:* In the presence of preadded GR113808 (1 μ M) and ketanserin (0.1 μ M), 5-HT (10 μ M) does not cause any change in contractility (measured as maximal development of force, $(dF/dt)_{max}$). For comparison, activation of the β -adrenergic receptors (β -AR) by isoproterenol (100 μ M) induces an increase in contractility as well as a shortening of the contraction-relaxation cycle (CRC; *upper right panel*). *Middle left panel:* The 5-HT (10 μ M)-induced increase in contractility in the presence of preadded ketanserin (0.1 μ M) is completely antagonised by GR113808 (1 μ M). *Middle right panel:* During the 5-HT-mediated increase in contractile force, the CRC is shortened as observed under isoproterenol exposure, indicating a cAMP-mediated mechanism. *Bottom left panel:* In the presence of preadded GR113808 (1 μ M), 5-HT (10 μ M) mediates an increase in contractility which is completely antagonised by addition of ketanserin (0.1 μ M). *Bottom right panel:* The 5-HT-mediated increase in contractile force under GR113808 exposure occurs with no shortening of the CRC, indicating a non-cAMP-mediated mechanism.
doi:10.1371/journal.pone.0045489.g005

Conclusions

Our findings that the 5-HT₄ receptor mRNA is expressed at high levels in foetal and failing hearts with corresponding changes in the inotropic responses suggest a role of the 5-HT₄ receptor in heart development and failure. We also demonstrated that the 5-HT_{2A} receptor mRNA and function are transiently increased at birth, whereas the 5-HT_{2B} receptor mRNA expression is also transiently expressed at birth, but without any effect on cardiac contractility.

References

- Brattelid T, Tveit K, Birkeland JA, Sjaastad I, Qvigstad E, et al. (2007) Expression of mRNA encoding G protein-coupled receptors involved in congestive heart failure—a quantitative RT-PCR study and the question of normalisation. *Basic Res Cardiol* 102: 198–208.
- Rajabi M, Kassiotis C, Razeghi P, Taegtmeier H (2007) Return to the fetal gene program protects the stressed heart: a strong hypothesis. *Heart Fail Rev* 12: 331–343.
- Chien KR, Knowlton KU, Zhu H, Chien S (1991) Regulation of cardiac gene expression during myocardial growth and hypertrophy: molecular studies of an adaptive physiologic response. *Faseb J* 5: 3037–3046.
- Sack MN, Rader TA, Park S, Bastin J, McCune SA, et al. (1996) Fatty acid oxidation enzyme gene expression is downregulated in the failing heart. *Circulation* 94: 2837–2842.
- McKinsey TA, Olson EN (2005) Toward transcriptional therapies for the failing heart: chemical screens to modulate genes. *J Clin Invest* 115: 538–546.

Acknowledgments

We thank the staff at Department of Comparative Medicine, Oslo University Hospital, Rikshospitalet, for help with animal experiments.

Author Contributions

Conceived and designed the experiments: TB SVB EQ LRM DLS TS JBO IS FOL. Performed the experiments: TB SVB EQ LRM DLS TS JBO JAKB IS FOL. Analyzed the data: TB SVB EQ LRM DLS TS JBO FOL. Contributed reagents/materials/analysis tools: TB SVB EQ LRM DLS TS JBO IS FOL. Wrote the paper: TB SVB EQ LM DLS TS JBO JAKB IS FOL.

6. Buznikov GA, Lambert HW, Lauder JM (2001) Serotonin and serotonin-like substances as regulators of early embryogenesis and morphogenesis. *Cell Tissue Res* 305: 177–186.
7. Sari Y, Zhou FC (2003) Serotonin and its transporter on proliferation of fetal heart cells. *Int J Dev Neurosci* 21: 417–424.
8. Jahnel U, Rupp J, Ertl R, Nawrath H (1992) Positive inotropic response to 5-HT in human atrial but not in ventricular heart muscle. *Naunyn Schmiedeberg Arch Pharmacol* 346: 482–485.
9. Schoemaker RG, Du XY, Bax WA, Bos E, Saxena PR (1993) 5-Hydroxytryptamine stimulates human isolated atrium but not ventricle. *Eur J Pharmacol* 230: 103–105.
10. Laer S, Remmers F, Scholz H, Stein B, Muller FU, et al. (1998) Receptor mechanisms involved in the 5-HT-induced inotropic action in the rat isolated atrium. *Br J Pharmacol* 123: 1182–1188.
11. Brattelid T, Qvigstad E, Lynham JA, Molenaar P, Aass H, et al. (2004) Functional serotonin 5-HT₄ receptors in porcine and human ventricular myocardium with increased 5-HT₄ mRNA in heart failure. *Naunyn Schmiedeberg Arch Pharmacol* 370: 157–166.
12. Brattelid T, Qvigstad E, Birkeland JA, Swift F, Bekkevold SV, et al. (2007) Serotonin responsiveness through 5-HT_{2A} and 5-HT₄ receptors is differentially regulated in hypertrophic and failing rat cardiac ventricle. *J Mol Cell Cardiol* 43: 767–779.
13. Qvigstad E, Brattelid T, Sjaastad I, Andressen KW, Krobert KA, et al. (2005) Appearance of a ventricular 5-HT₄ receptor-mediated inotropic response to serotonin in heart failure. *Cardiovasc Res* 65: 869–878.
14. Vikenes K, Farstad M, Nordrehaug JE (1999) Serotonin is associated with coronary artery disease and cardiac events. *Circulation* 100: 483–489.
15. Hara K, Hirowatari Y, Yoshika M, Komiya Y, Tsuka Y, et al. (2004) The ratio of plasma to whole-blood serotonin may be a novel marker of atherosclerotic cardiovascular disease. *J Lab Clin Med* 144: 31–37.
16. Hirowatari Y, Hara K, Kamihata H, Iwasaka T, Takahashi H (2004) High-performance liquid chromatographic method with column-switching and post-column reaction for determination of serotonin levels in platelet-poor plasma. *Clin Biochem* 37: 191–197.
17. van den Berg EK, Schmitz JM, Benedict CR, Malloy CR, Willerson JT, et al. (1989) Transcardiac serotonin concentration is increased in selected patients with limiting angina and complex coronary lesion morphology. *Circulation* 79: 116–124.
18. Kjekshus JK, Torp-Pedersen C, Gullestad L, Kober L, Edvardsen T, et al. (2009) Effect of piboserod, a 5-HT₄ serotonin receptor antagonist, on left ventricular function in patients with symptomatic heart failure. *Eur J Heart Fail* 11: 771–778.
19. Qvigstad E, Sjaastad I, Brattelid T, Nunn C, Swift F, et al. (2005) Dual serotonergic regulation of ventricular contractile force through 5-HT_{2A} and 5-HT₄ receptors induced in the acute failing heart. *Circ Res* 97: 268–276.
20. Sjaastad I, Sejersted OM, Ilebekk A, Bjornerheim R (2000) Echocardiographic criteria for detection of postinfarction congestive heart failure in rats. *J Appl Physiol* 89: 1445–1454.
21. Bach T, Syversveen T, Kvingedal AM, Krobert KA, Brattelid T, et al. (2001) 5HT_{4(a)} and 5-HT_{4(b)} receptors have nearly identical pharmacology and are both expressed in human atrium and ventricle. *Naunyn Schmiedeberg Arch Pharmacol* 363: 146–160.
22. Iyengar R, Abramowitz J, Bordelon-Riser M, Birnbaumer L (1980) Hormone receptor-mediated stimulation of adenylyl cyclase systems. Nucleotide effects and analysis in terms of a simple two-state model for the basic receptor-affected enzyme. *J Biol Chem* 255: 3558–3564.
23. Skomedal T, Aass H, Osnes JB (1984) Specific binding of [³H]prazosin to myocardial cells isolated from adult rats. *Biochem Pharmacol* 33: 1897–1906.
24. Medhurst AD, Lezoualc'h F, Fischmeister R, Middlemiss DN, Sanger GJ (2001) Quantitative mRNA analysis of five C-terminal splice variants of the human 5-HT₄ receptor in the central nervous system by TaqMan real time RT-PCR. *Brain Res Mol Brain Res* 90: 125–134.
25. Brattelid T, Winer LH, Levy FO, Liestol K, Sejersted OM, et al. (2010) Reference gene alternatives to Gapdh in rodent and human heart failure gene expression studies. *BMC Mol Biol* 11: 22.
26. Birkeland JA, Sjaastad I, Brattelid T, Qvigstad E, Moberg ER, et al. (2007) Effects of treatment with a 5-HT₄ receptor antagonist in heart failure. *Br J Pharmacol* 150: 143–152.
27. Nolan T, Hands RE, Bustin SA (2006) Quantification of mRNA using real-time RT-PCR. *Nat Protoc* 1: 1559–1582.
28. Vandesompele J, De Preter K, Pattyn F, Poppe B, Van Roy N, et al. (2002) Accurate normalization of real-time quantitative RT-PCR data by geometric averaging of multiple internal control genes. *Genome Biol* 3: RESEARCH0034.
29. Sjaastad I, Schiander I, Sjetman A, Qvigstad E, Bokenes J, et al. (2003) Increased contribution of α_1 - vs. β -adrenoceptor-mediated inotropic response in rats with congestive heart failure. *Acta Physiol Scand* 177: 449–458.
30. Guicheney P, Meyer P (1981) Binding of [³H]-prazosin and [³H]-dihydroergocryptine to rat cardiac alpha-adrenoceptors. *Br J Pharmacol* 73: 33–39.
31. Juberg EN, Minneman KP, Abel PW (1985) β_1 - and β_2 -adrenoceptor binding and functional response in right and left atria of rat heart. *Naunyn Schmiedeberg Arch Pharmacol* 330: 193–202.
32. Waelbroeck M, Robberecht P, Chatelain P, De Neef P, Christophe J (1985) Effects of temperature and ethanol on agonist and antagonist binding to heart muscarinic receptors in the absence and presence of GTP. *Biochem J* 231: 469–476.
33. Muntasir HA, Bhuiyan MA, Ishiguro M, Ozaki M, Nagatomo T (2006) Inverse agonist activity of sarpogrelate, a selective 5-HT_{2A}-receptor antagonist, at the constitutively active human 5-HT_{2A} receptor. *J Pharmacol Sci* 102: 189–195.
34. Pindon A, van Hecke G, van Gompel P, Lesage AS, Leyeys JE, et al. (2002) Differences in signal transduction of two 5-HT₄ receptor splice variants: compound specificity and dual coupling with G_{as}- and G_{ai/o}-proteins. *Mol Pharmacol* 61: 85–96.
35. Razeghi P, Young ME, Alcorn JL, Moravec CS, Frazier OH, et al. (2001) Metabolic gene expression in fetal and failing human heart. *Circulation* 104: 2923–2931.
36. Sassoon DA, Garner I, Buckingham M (1988) Transcripts of alpha-cardiac and alpha-skeletal actins are early markers for myogenesis in the mouse embryo. *Development* 104: 155–164.
37. Bonhaus DW, Weinhardt KK, Taylor M, DeSouza A, McNeeley PM, et al. (1997) RS-102221: a novel high affinity and selective, 5-HT_{2C} receptor antagonist. *Neuropharmacology* 36: 621–629.
38. Kursar JD, Nelson DL, Wainscott DB, Baez M (1994) Molecular cloning, functional expression, and mRNA tissue distribution of the human 5-hydroxytryptamine_{2B} receptor. *Mol Pharmacol* 46: 227–234.
39. Kamel R, Garcia S, Lezoualc'h F, Fischmeister R, Muller S, et al. (2007) Immunomodulation by maternal autoantibodies of the fetal serotonergic 5-HT₄ receptor and its consequences in early BALB/c mouse embryonic development. *BMC Dev Biol* 7: 34.
40. Florholmen G, Andersson KB, Yndestad A, Austbo B, Henriksen UL, et al. (2004) Leukaemia inhibitory factor alters expression of genes involved in rat cardiomyocyte energy metabolism. *Acta Physiol Scand* 180: 133–142.
41. Larsen KO, Lygren B, Sjaastad I, Krobert KA, Arnkvaern K, et al. (2008) Diastolic dysfunction in alveolar hypoxia: a role for interleukin-18-mediated increase in protein phosphatase 2A. *Cardiovasc Res* 80: 47–54.
42. Yndestad A, Landro L, Ueland T, Dahl CP, Flo TH, et al. (2009) Increased systemic and myocardial expression of neutrophil gelatinase-associated lipocalin in clinical and experimental heart failure. *Eur Heart J* 30: 1229–1236.
43. Wetschurek N, Rutten H, Zywiets A, Gehring D, Wilkie TM, et al. (2001) Absence of pressure overload induced myocardial hypertrophy after conditional inactivation of G_{αq}/G_{α11} in cardiomyocytes. *Nat Med* 7: 1236–1240.
44. Bush E, Fielitz J, Melvin L, Martinez-Arnold M, McKinsey TA, et al. (2004) A small molecular activator of cardiac hypertrophy uncovered in a chemical screen for modifiers of the calcineurin signaling pathway. *Proc Natl Acad Sci U S A* 101: 2870–2875.
45. Bonhaus DW, Bach C, DeSouza A, Salazar FH, Matsuoka BD, et al. (1995) The pharmacology and distribution of human 5-hydroxytryptamine_{2B} (5-HT_{2B}) receptor gene products: comparison with 5-HT_{2A} and 5-HT_{2C} receptors. *Br J Pharmacol* 115: 622–628.
46. Nebigil CG, Jaffre F, Messaddeq N, Hickel P, Monassier L, et al. (2003) Overexpression of the serotonin 5-HT_{2B} receptor in heart leads to abnormal mitochondrial function and cardiac hypertrophy. *Circulation* 107: 3223–3229.
47. Ikeda K, Tojo K, Tokudome G, Hosoya T, Harada M, et al. (2000) The effects of sarpogrelate on cardiomyocyte hypertrophy. *Life Sci* 67: 2991–2996.
48. Heymann MA, Iwamoto HS, Rudolph AM (1981) Factors affecting changes in the neonatal systemic circulation. *Annu Rev Physiol* 43: 371–383.
49. Jaffre F, Bonnin P, Callebert J, Debbabi H, Setola V, et al. (2009) Serotonin and angiotensin receptors in cardiac fibroblasts coregulate adrenergic-dependent cardiac hypertrophy. *Circ Res* 104: 113–123.
50. Bharti S, Singh R, Chauhan SS, Hussain T, Al-Attas OS, et al. (2012) Phosphorylation of Akt/GSK-3 β /eNOS amplifies 5-HT_{2B} receptor blockade mediated anti-hypertrophic effect in rats. *FEBS Lett* 586: 180–185.
51. Wainscott DB, Sasso DA, Kursar JD, Baez M, Lucaites VL, et al. (1998) [³H]Rauwolscine: an antagonist radioligand for the cloned human 5-hydroxytryptamine_{2b} (5-HT_{2B}) receptor. *Naunyn Schmiedeberg Arch Pharmacol* 357: 17–24.
52. Kojima M, Ishima T, Taniguchi N, Kimura K, Sada H, et al. (1990) Developmental changes in β -adrenoceptors, muscarinic cholinceptors and Ca²⁺ channels in rat ventricular muscles. *Br J Pharmacol* 99: 334–339.
53. Watts SW (2005) 5-HT in systemic hypertension: foe, friend or fantasy? *Clin Sci (Lond)* 108: 399–412.
54. Kaumann AJ, Lynham JA, Brown AM (1996) Comparison of the densities of 5-HT₄ receptors, β_1 - and β_2 -adrenoceptors in human atrium: functional implications. *Naunyn Schmiedeberg Arch Pharmacol* 353: 592–595.
55. Brudeli B, Moltzau LR, Andressen KW, Krobert KA, Klavness J, et al. (2010) Synthesis and pharmacological properties of novel hydrophilic 5-HT₄ receptor antagonists. *Bioorg Med Chem* 18: 8600–8613.
56. Brattelid T, Levy FO (2011) Quantification of GPCR mRNA using real-time RT-PCR. *Methods Mol Biol* 746: 165–193.
57. Waerber C, Sebben M, Bockaert J, Dumuis A (1996) Regional distribution and ontogeny of 5-HT₄ binding sites in rat brain. *Behav Brain Res* 73: 259–262.
58. Afzal F, Andressen KW, Mork HK, Aronsen JM, Sjaastad I, et al. (2008) 5-HT₄-elicited positive inotropic response is mediated by cAMP and regulated by PDE3 in failing rat and human cardiac ventricles. *Br J Pharmacol* 155: 1005–1014.
59. Kaumann AJ, Levy FO (2006) 5-hydroxytryptamine receptors in the human cardiovascular system. *Pharmacol Ther* 111: 674–706.