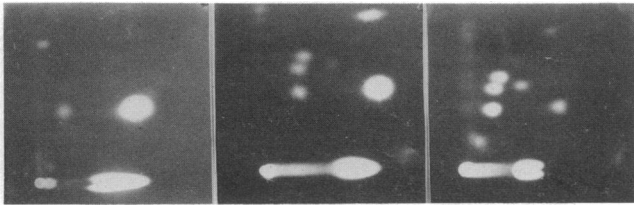


**Correction.** In the article "Possible occurrence and role of an essential histidyl residue in succinate dehydrogenase" by Steven B. Vik and Youssef Hatefi, which appeared in the November 1981 issue of *Proc. Natl. Acad. Sci. USA* (78, 6749–6753), two undefined acronyms appear on pages 6750 and 6751. One is DCIP and should be  $Cl_2IP$ ; the other is DEPC and should be  $Et_2PC$ .

**Correction.** In the article "Intracellular hormone receptors: Evidence for insulin and lactogen receptors in a unique vesicle sedimenting in lysosome fractions of rat liver" by Masood N. Khan, Barry I. Posner, Anil K. Verma, Rahat J. Khan, and John J. M. Bergeron, which appeared in the August 1981 issue of *Proc. Natl. Acad. Sci. USA* (78, 4980–4984), two panels of Fig. 4 were described incorrectly in the legend. The correct description is that, in Fig. 4, *B* represents somatotropin binding sites and *C* represents insulin binding sites.

**Correction.** In the article "Isolation and amino acid sequence of a morphogenetic peptide from hydra" by H. Chica Schaller and Heinz Bodenmuller, which appeared in the November 1981 issue of *Proc. Natl. Acad. Sci. USA* (78, 7000–7004), an error by the printer resulted in Fig. 6 being printed upside down and reversed from side to side. The correct picture is shown below.



**Correction.** In the article "Multiple differences between the nucleic acid sequences of the  $IgG2a^a$  and  $IgG2a^b$  alleles of the mouse" by Peter H. Schreier, Alfred L. M. Bothwell, Benno Mueller-Hill, and David Baltimore, which appeared in the July 1981 issue of *Proc. Natl. Acad. Sci. USA* (78, 4495–4499), the authors request that the following correction be noted. The last line of the Abstract should read "from the  $IgG2a^a$  allele by the  $IgG2b^a$  allele."

**Correction.** In the article "Molecular basis for familial isolated growth hormone deficiency" by John A. Phillips III, Brian L. Hjelle, Peter H. Seeburg, and Milo Zachmann, which appeared in the October 1981 issue of *Proc. Natl. Acad. Sci. USA* (78, 6372–6375), an undetected printer's error occurred on p. 6372. Fig. 1 was printed upside down. It and its legend are reproduced correctly here.

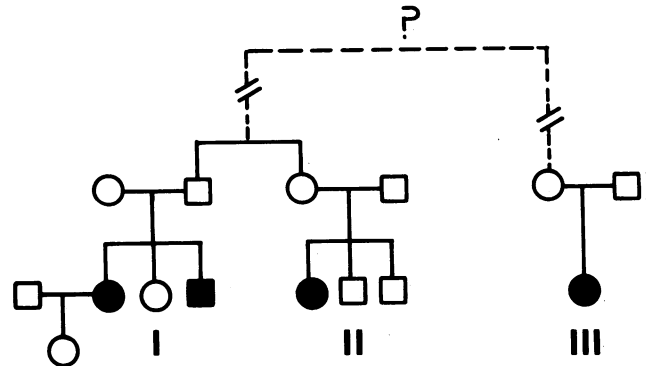


FIG. 1. Pedigrees of families I–III, each of which has one or more individuals affected with IGHD type A (●, ■).