



Published in final edited form as:

J Renin Angiotensin Aldosterone Syst. 2012 September ; 13(3): 341–352. doi:
10.1177/1470320312443720.

Ontogeny of Angiotensin Type 2 and Type 1 Receptor Expression in Mice

Juan Gao, Jie Chao, Karma-Jaya K. Parbhu, Li Yu, Liang Xiao, Fei Gao, and Lie Gao

Department of Cellular and Integrative Physiology, University of Nebraska Medical Center,
Omaha, Nebraska

Abstract

In the current experiment, we determined AT2R and AT1R protein expression by Western blot analysis in developing normal mice. The results indicate that, (1) in all detected brain regions and in the spinal cord, adult mice exhibited significantly higher AT2R expression and lower AT1R expression in total protein extracts compared to fetuses and neonates; (2) other major organs, including heart, lung, liver, and kidney, exhibited the same expression pattern as the brain and spinal cord; (3) reciprocal changes in AT2R and AT1R expression were found in the total protein extracts from the brainstems of mice from one day prenatal to six weeks of age. There was a negative correlation between AT2R and AT1R protein expression; (4) in both membrane and cytosolic fractions from the brainstem, adult mice exhibited higher AT2R and lower AT1R expression than did fetuses and neonates; (5) in the brainstem, there were no significant differences in AT2R and AT1R mRNA levels among fetal, neonatal, and adult mice. The above results reconfirmed our previous finding in rats that adult animals have higher AT2R and lower AT1R expression compared to fetuses and neonates. These data imply an involvement of AT1R in fetal development and of AT2R in adult function.

Keywords

Angiotensin receptors; development; protein expression; mRNA expression

1. Introduction

The Renin-Angiotensin System (RAS) plays multiple roles in sympathetic regulation, cardiovascular control, water and electrolyte balance, and hormone secretion^{1,2}. Angiotensin type 1 receptors (AT1R) and Angiotensin type 2 receptors (AT2R) are two main effectors of this system, through which Angiotensin II exerts the majority of its functions. A better understanding of AT1R and AT2R expression profiles during growth and maturation is essential to estimate the significance of this system. It has long been assumed that AT2R is abundant only during fetal life. Immediately after birth, the expression of this receptor decreases thus making the AT1R the dominant receptor subtype^{3,4}. Available evidence for this notion however, is derived from studies utilizing autoradiography^{5,6}, competition binding assay^{7,8}, and *in situ* hybridization^{9,10}. These techniques detect an affinity of ligand-receptor or mRNA but do not directly evaluate receptor protein expression. Employing Western blot analysis, we recently demonstrated that, in the brainstem, liver, and kidney, adult rats exhibit a significantly higher AT2R and lower AT1R protein expression when compared to fetuses and neonates¹¹. To our knowledge, this is the first report of

Address Correspondence to: Lie Gao, M.D., Ph.D., Department of Cellular and Integrative Physiology, University of Nebraska Medical Center, 985850 Nebraska Medical Center, Omaha, Nebraska 68198-5850, Tel: (402) 559 8491, FAX: (402) 559 4438, lgao@unmc.edu.

developmental changes of these two receptors based on protein expression. More importantly, our data contradict the currently prevailing concept based on other techniques. In the current study, we evaluated developmental changes in AT2R and AT1R expression in various tissues and organs of mice to extend our previous findings in rats.

2. Methods

2.1. Animals

A total of 73 male c57BL/6 mice, including fetuses (~ 3 days before birth), neonates (~ 3 days after birth), juvenile (1 – 6 weeks), and adults (10 – 14 weeks) were used in this study. The individual fetuses were taken from different pregnant female mice, and individual neonates were taken from different litters. The sex of the fetuses and neonates was identified by the sex determining region Y (SRY) expression employing RT-PCR. The primers used are given in Table 1. All experiments were approved by the Institutional Animal Care and Use Committee of the University of Nebraska Medical Center and were carried out under the guidelines of the American Physiological Society and the National Institutes of Health *Guide for the Care and Use of Laboratory Animals*.

2.2. Preparation of Tissues

All mice were euthanized by CO₂. The cerebral cortex, hypothalamus, cerebellum, brainstem, spinal cord, heart, lung, liver, and kidney were removed and immediately frozen on dry ice, and stored at –80 °C. The samples were stored for a maximum of 2 weeks. The whole heart and whole right kidney from each fetus and neonate were used due to their small size, but only partial tissues from other organs were used. All tissues were taken from the same regions of each organ. For example, the brainstem samples were taken from a rostral coronal section 0.5 – 2.0 mm of the obex. Kidney samples of adult mice were taken as a 0.5 – 1.0 mm horizontal section from the middle of the right kidney, which included the renal cortex, medulla, calyx, and vessels. The hepatic anterior lobe and the lower portion of left lung were taken for analysis.

2.3. Western Blot Analysis of Total Protein Extract

The tissues were homogenized in RIPA buffer (50 mM Tris/HCl pH7.4, 150 mM NaCl, 2 mM EDTA, 1% NP-40, 0.1% SDS) and total protein was extracted from the homogenates. The concentration of protein extracted was measured using a protein assay kit (Pierce; Rockford, IL) and adjusted with equal volumes of 2X 4% SDS sample buffer. The samples were boiled for 5 min followed by loading on a 10% SDS-PAGE gel (30 µg protein/per well) for electrophoresis using a Bio-Rad mini gel apparatus at 40 mA/gel for 45 min. The fractionized protein on the gel was transferred onto a PVDF membrane (Millipore) and electrophoresed at 300 mA for 90 min. The membrane was first probed with AT2R primary antibodies (Rabbit polyclonal to Angiotensin II Type 2 Receptor, ab78747, Abcam, 1:1000 dilution) and secondary antibody (goat anti-rabbit IgG-HRP, Santa Cruz, 1:5000), and then treated with enhanced chemi-luminescence substrate (Pierce; Rockford, IL) for 5 min at room temperature. The bands on the membrane were visualized and analyzed using UVP BioImaging Systems. After obtaining the AT2R blot density, the membrane was treated with Restore Western Blot Stripping Buffer (Thermo Scientific) to remove the AT2R signal, followed by probing with AT1R primary antibodies (AT1R rabbit polyclonal IgG, sc-1173, Santa Cruz Biotechnology Inc, 1:500) and finally with GAPDH primary antibodies (GAPDH mouse monoclonal IgG, sc-32233, Santa Cruz Biotechnology Inc, 1:1000) using the same process as the AT2R antibodies to obtain the AT1R and GAPDH blot densities. The final reported data are the normalized AT2R and AT1R band density divided by the GAPDH density.

2.4. Western Blot Analysis of Membrane and Cytosolic Protein Extracts

The membrane and cytosolic protein fractions from mouse brainstems were extracted using ProteoExtract Tansmenbrane Protein Extraction Kit (Novagen Madison, WI, USA), according to the procedures recommended by the manufacturer. Briefly, brainstems were homogenized in glass homogenizers in buffer with protease inhibitor cocktail. The homogenate was then centrifuged at $1000 \times g$ at $4^\circ C$ for 5 min. The supernatant contained the cytosolic protein fraction. The pellet was resuspended in buffer with protease inhibitor cocktail, and centrifuged at $16,000 \times g$ at $4^\circ C$ for 15 min. This supernatant was enriched with integral membrane proteins. The membrane and cytosolic fractions were then stored at $-80^\circ C$ until analyzed. The Western blot procedures used to determine AT2R and AT1R protein expression in membrane and cytosol were the same as that described above for total protein extract.

2.5. Validation of AT2R and AT1R antibodies

In order to characterize the specificity of antibodies used in this experiment, we carried out a positive control for both receptor antibodies. The primary procedures for this test were the same as for western blotting described in section 2.3. We replaced the tissue with rat adrenal medulla (a positive control for AT2R antibody) or rat paraventricular nucleus (PVN) (a positive control for AT1R antibody). In addition, we carried out an antibody preabsorption assay using these positive tissues with blocking peptide treated antibodies. The antibodies were preabsorbed according to the description by Shekhar A et al¹². Briefly, a 1:1000 dilution of the AT2R antibody or 1:500 dilution of AT1R antibody was incubated overnight at room temperature in 1 ml of 0.1 M PBS with 0.1% Tween 20 alone or with 5 \times , 10 \times , or 20 \times concentrations of AT2R antibody blocking peptide (ab90842, Abcam) or AT1R antibody blocking peptide (sc-1173P, Santa Cruz Biotechnology). On the following day, the treated antibodies were subjected to western blotting as described above.

2.6. Real-Time RT PCR

Total RNA was extracted from brainstems with TRIZOL Reagent (Invitrogen), which was then reverse transcribed into double-stranded cDNA using iScript cDNA Synthesis Kit (BIO-RAD). Templates (50 ng cDNA) were subjected in triplicate to Real-time PCR using a thermocycler (PTC-200 Peltier Thermal Cycler with CHROMO 4 Continuous Fluorescence Detector, BIO-RAD). SsoFast EvaGreen Supermix (BIO-RAD) and AT2R, AT1R, GAPDH specific primers were used for relative quantitation. Target genes were normalized to GAPDH levels, expressed as $2(-\Delta C_t)$, where ΔC_t is $\{C_t[\text{target}] - C_t[\text{GAPDH}]\}$. The primers were designed using free online software at <https://www.genscript.com/ssl-bin/app/primer> and synthesized in the Eppley Institute Molecular Biology Core Laboratory on the campus of the University of Nebraska Medical Center. Please see Table 1 for details of gene-specific primers.

2.7. Statistical Analyses

All data are described as the mean \pm SE. A one way ANOVA was used followed by the Student-Newman-Keuls *post hoc* analysis where appropriate. Pearson Correlation was performed to assess the relationship between the changes of AT1R and AT2R protein expression in developing mice. Statistical analysis was done with the aid of SigmaStat software. A P value < 0.05 was considered statistically significant.

3. Results

3.1. AT2R and AT1R protein expression in various brain regions and spinal cord

We measured AT2R and AT1R total protein expression in extracts from cerebral cortex, hypothalamus, cerebellum, brainstem, and spinal cord of fetal, neonatal, and adult mice. In all detected brain regions and in the spinal cord, adult mice exhibited a significantly higher AT2R and significantly lower AT1R protein expression than did fetuses and neonates (Figure 1). However there were no significant differences between fetal and neonatal mice.

AT2R and AT1R protein expression in other organs

To determine if the above expression pattern also existed in non-neural tissues, we measured AT2R and AT1R expression in total protein extract from heart, lung, liver, and kidney (Figure 2). Heart, liver, and kidney exhibited the same expression profile as did neural tissue. Even though lung tissue of adult mice had higher AT2R expression than that of fetal and neonatal mice, there was no significant difference in AT1R expression among the three groups.

3.2. Correlation of AT2R and AT1R protein expressions

To analyze the correlation of AT2R and AT1R expression during development, we measured their expression levels in whole cell protein extract from brainstem samples of eight groups of mice over 6 weeks of age. As can be seen in panel A of Figure 3, AT2R expression gradually increased, whereas AT1R expression gradually decreased, from fetal to 6 weeks of age. Panel B shows the mean data of blot density for developing changes of AT1R and AT2R. Acute alterations of both AT2R and AT1R expression occur between 1 day and 2 weeks of post-natal life. There were no significant differences in their expression before 1 day or after 2 weeks. Panel C of figure 3 shows the relationship between AT2R and AT1R expression from which we can clearly see a strong, negative correlation over the range of developmental ages studied (correlation coefficient: $r = -0.92$, $P = 0.001$, $n = 5$ /group).

3.3. AT2R and AT1R expressions in membrane and cytosol

As two G protein coupled receptors, the mature AT2R and AT1R are integrated into the cell membrane, and therefore it is of interest to determine their expression in the membrane and cytosol. These data are shown in Figure 4. Both membrane (panel A) and cytosol (panel B) protein extracts from brainstems exhibit higher AT2R and lower AT1R protein expression in adult mice compared to fetus and neonates; similar to that observed for total protein. Panel A of Figure 4 shows a very weak GAPDH blot (cytosol marker) and a very strong Na^+/K^+ ATP blot (membrane marker). This suggests a high quality membrane extract. We noticed that the Na^+/K^+ ATP expression was visibly higher in adult mice compared to fetus and neonate. Therefore we could not utilize this membrane marker as an internal control for AT2R and AT1R expression. In contrast, there was no difference in GAPDH expression among these three groups of mice. We therefore used GAPDH blot density to normalize the AT2R and AT1R expression in membrane, which resulted in a higher ratio of AT2R or AT1R to the GAPDH than usual (Figure 4A).

3.4. Characterization of the AT1R and AT2R antibodies

To confirm the specificity of antibodies, we employed rat adrenal medulla as an AT2R positive tissue and PVN as an AT1R positive tissue. Blots 1 and 5 of Figure 5 show a single strong band at 50~ kDa for AT2R immunostaining in adrenal medulla protein extract and a predominant band at ~ 45 kDa for AT1R immunostaining in PVN protein extract. When the antibodies were preincubated with three different concentrations of blocking peptides, the

immunostaining bands gradient weakened at 5 × and 10 × concentration of peptides and completely disappeared at 20 ×, These are shown in blots 2–4 (AT2R blots) and 6–8 (AT1R blots). These data demonstrate that the AT2R antibody and AT1R antibody used in this experiment were specific for the AT2R and AT1R antigens.

3.5. AT2R and AT1R mRNA expression

Figure 6 shows the AT2R and AT1R mRNA expression in the brainstems from fetal, neonatal, and adult mice using real-time RT-PCR. There were no significant differences in AT1R mRNA expression levels among these three groups of mice. The AT2R mRNA expression appears somewhat higher in fetuses than that in neonates and adults, but the difference did not reach statistical significance.

Discussion

We have examined developmental changes of AT2R and AT1R protein expression in various neural and non-neural tissues of normal mice. Neural tissue included cerebral cortex, hypothalamus, cerebellum, brainstem, and spinal cord. Non-neural tissue included heart, lung, liver, and kidney. Our major findings are that, in all tissues, adult mice exhibited a significantly higher AT2R, and a significantly lower AT1R protein expression than did fetal and neonatal mice. These results confirmed our previous findings in rats¹¹ and extend this observation to additional organs and tissues. This developing expression pattern was also demonstrated in the cell membrane and cytosolic components. In addition, we documented a negative relationship in the developing changes of protein expression between these two receptors from fetus to 6 weeks of age. However, we did not find significant differences in AT2R and AT1R mRNA levels among fetal, neonatal, and adult mice.

The current findings of lower AT2R protein expression in the fetal mice, together with our previous data from fetal rats, further calls into question the well-accepted concept concerning the maturation of this receptor. Even though the AT2R has been demonstrated to be dramatically higher in the fetus using autoradiography and thus has been considered to be involved in development for around thirty years^{3,4}, the evidence linking this receptor to growth or maturation has been absent. In contrast, the AT1R has been well documented to mediate antiproliferation^{1,3,13}. Moreover, AT2R deficient mice do not exhibit any obvious developmental abnormalities^{14,15}, directly contradicting the hypothesized role of this receptor in growth or development. On the other hand, data reported from functional experiments in fetal animals are consistent with our finding of a lower AT2R expression and AT1R as the predominant receptor subtype in the fetus. In the ovine fetus, intracerebroventricular injection of Ang II elevated plasma vasopressin¹⁶, up-regulated hypothalamic c-fos expression^{17,18}, and evoked a pressor response^{19,20}, which were completely abolished by the AT1R antagonist losartan, but not by the AT2R antagonist PD 123319^{21,22}. Moreover, a functional AT1R has also been demonstrated to be present in the fetal cardiovascular system^{23,24}. In the ovine fetus, intravenous injection of Ang II elicited a significant increase in arterial blood pressure, which was abolished by the AT1R antagonist losartan^{25,26}. These results strongly suggest that in the fetus the AT1R but not the AT2R is the predominant Ang II receptor subtype²⁷, and therefore the AT1R may play a more important role during fetal life than was previously expected, especially in the regulation of cardiovascular system and sympathetic outflow²⁸.

Another intriguing finding of the present study is the age-related down regulation of AT1R expression, with the highest level in the fetus and the lowest in adult tissue. These results are consistent with previous reports from other laboratories that the RAS is activated more during the early stages of development²⁹. In the neonatal period in humans, Miyawaki et al.³⁰ reported higher plasma Ang II at day 0 than that at day 7. In children aged between 1

week and 13 years, Fiselier et al.³¹ found an age-related decrease in plasma Ang II concentration. In the adult, Broughton et al.³² documented lower Ang II level compared to children. An age-related decrease in plasma Ang II also could be found in sheep³³ and rabbits³⁴. In addition to Ang II, the plasma concentration of other major components of the RAS, including renin, Ang I, angiotensin-converting enzyme (ACE), and aldosterone all inversely correlate with age³¹. The higher AT1R expression in the fetus observed in the current study implies a potential involvement of this receptor in development. In fact, accumulating evidence demonstrates a critical role of AT1R but not AT2R in development, especially in renal genesis^{35;36}. Blockade of AT1R in newborn rats induced an arrest in nephrovascular maturation and renal growth^{37;38}, whereas blockade of AT2R did not alter renal morphology³⁸. Mice with targeted deletion of AT1_aR/AT1_bR exhibit renal histological abnormalities³⁹. However, AT2R-deficient mice have histologically normal kidneys¹⁵.

Finally, the data from the current study demonstrated an inverse expression pattern between AT1R and AT2R during development. This phenomenon leads us to postulate that there is a potential cross-talk between these two receptors that may reciprocally regulate the expression of each. An inverse expression pattern has been reported in some pathological conditions. In a rat model of cold-induced hypertension, the hypothalamus and brainstem exhibit higher AT1R and lower AT2R mRNA and binding compared with control rats⁴⁰. In the rostral ventrolateral medulla we have previously found higher AT1R and lower AT2R protein in rats with chronic heart failure compared to sham rats⁴¹. In the renal cortex⁴² and cerebral microvessels⁴³ of spontaneously hypertensive rats higher AT1R and lower AT2R protein expression has been demonstrated compared to normotensive control rats. This inverse expression pattern between AT1R and AT2R is also gender, sex hormone, and cytokine relevant. In the kidney, male rats have higher AT1R but lower AT2R mRNA than do female rats⁴⁴. In female rats following ovariectomy, estrogen replacement significantly down-regulated AT1R and up-regulated AT2R expression in the adrenal glands⁴⁵ and kidneys⁴⁴. Interleukin-6 treatment⁴⁶, nicotine exposure⁴⁷, and chronic hypoxia⁴⁸ have also been demonstrated to evoke an inverse expression pattern of AT1R and AT2R. In the current study, we found a highly negative correlation between AT1R and AT2R protein expression from fetus to six weeks of age. To our knowledge, this is the first report to quantify this inverse relationship between these two receptors.

The exact mechanism(s) underlying these developmental changes in AT1R and AT2R expression are unknown. Increasing evidence however, supports the hypothesis that the reciprocal regulation between these two receptors may play some role in this respect. Indeed, the AT2R exhibits a profound inhibitory influence on AT1R expression. Interestingly, this negative regulation seems to have “tonic” characteristics because higher AT1R expression could be observed when AT2R signaling was blocked genetically or pharmacologically. In some organs and tissues, including the hypothalamus, adrenal gland, kidney, liver, spleen, lung, and aorta, AT2R gene-deficient mice exhibit significantly higher AT1R expression and mRNA compared with wild-type mice^{49–52}. Pharmacological inhibition of AT2R by PD123319 in adult rats has been reported to enhance AT1R expression in the brain⁵³. The AT1R, on the other hand, exhibits an inhibitory influence on AT2R expression. It has been demonstrated that AT1R blockade up-regulated AT2R expression in the brain^{43;54;55}, muscular gastric layer⁵⁶, and adipose tissue⁵⁷. Stimulation of the AT1R has been reported to down regulate AT2R expression in PC12 cells through the Gq and ERK1/2 phosphorylation pathways⁵⁸. Similar data has been provided from endothelial cells⁵⁹.

The cause for the differences between our findings utilizing western blot analysis and the previous findings employing receptor binding assays is not clear. One possibility is that the results from western blotting represent the total receptor protein, while binding assays only

elucidate receptor proteins capable of binding to its ligand. In this case, the conclusion from binding assays seems more reasonable because it indicates functional protein. However, functional experiments do not support this postulation. As we indicated above, in the ovine fetus both central and peripheral administration of Ang II elicited a significant increase in blood pressure^{26;60} which was completely abolished by the AT1R blocker losartan, but not by the AT2R blocker PD123319^{21;25}. These findings directly contradict the data derived from binding assays that the AT2R is the predominant Angiotensin II receptor subtype in fetal life^{3;4}. Moreover in the membrane extracts, which supposedly includes the most of mature receptor protein, we demonstrated a lower AT2R and higher AT1R expression in fetal mice compared to the adult by western blotting (Figure 4). There are several limitations of the binding assay as applied to Angiotensin receptors. Even though the iodinated Ang II and its analogues are supposed to have equal affinities for AT1R and AT2R when used in receptor binding assays, several studies demonstrate that this is not always true. For example, Rowe et al.⁶¹ found that ¹²⁵I[Sar¹Ile⁸]Ang II had a four-fold higher affinity for the AT1R in rat brain nuclei compared to the AT2R. In contrast, in ovine tissues, ¹²⁵I[Sar¹Ile⁸]Ang II has been demonstrated to have a four-fold greater affinity for AT2R than AT1R⁶². However, in another study, ¹²⁵I[Sar¹Ile⁸]Ang II labeled both subtypes equally in the rat adrenal and brain whereas ¹²⁵I[Ang II] did not⁶³. These differences in radioligand affinity for Angiotensin receptors may result in significant shifts in dissociation constants and half-maximal displacements of [Sar¹Ile⁸] Ang II (Sar IC₅₀s, derived from competition assays) from tissues with different proportions of AT1R and AT2R⁶². While these differences may appear small with respect to the affinities of AT1R/AT2R antagonists (e.g. losartan and PD123319), they can result in the derivation of inaccurate proportions of receptor subtypes when using submaximal concentrations of the radioligand⁶².

For western blots, on the other hand, we recognize that caution is warranted with regard to the specificity of antibodies we used, especially because our data are opposite to the prevailing notion. The AT1R antibody in this experiment was purchased from Santa Cruz Biotechnology (sc-1173), which was used and validated by other laboratories⁶⁴⁻⁶⁶. The AT2R antibody was purchased from Abcam (ab78747), which was also applied and confirmed by another laboratory recently^{67;68}. To confirm the validity and specificity of these two antibodies within our own laboratory, we carried out positive controls and antibody preadsorption experiments. Using rat PVN tissue as the positive control for AT1R antibody, we obtained a single strong band at ~45 kDa (blot 1, Figure 5), which is consistent with previous estimations of the AT1R molecular weight^{12;69}. Employing rat adrenal medulla as the positive control for AT2R antibody, we obtained a distinct band at 50~ kDa (blot 5, Figure 5). This molecular weight is consistent with Abcam datasheet (<http://www.abcam.com/Angiotensin-II-Type-2-Receptor-antibody-ab78747.pdf>), and published data by other groups using AT2R antibody from Cell Signaling Technology⁷⁰ or from Santa Cruz Biotechnology⁷¹, and our previous results by AT2R antibody from Santa Cruz Biotechnology (sc-9040)¹¹, which is another rigorously validated, well-characterized AT2R antibody⁷². The AT1R has a calculated mass of 40,889 Daltons as deduced from its 359 amino acid sequence^{73;74} and the molecular mass of AT2R is predicated to be 41,346 Daltons based on its 363 amino acid sequence^{75;76}. However, the major specific bands of AT1R and AT2R obtained from western blot were larger than the sizes predicted by their amino acid sequences due to the glycosylation of receptor proteins⁶⁹. This phenomenon is much more obvious for the AT2R^{77;78}. Moreover, our data also show that both AT1R and AT2R western blot signals were eliminated by preadsorption of the antibodies with blocking peptides (blots 2-4 for AT2R and blots 6-8 for AT1R, Figure 5), further demonstrating the specificity of the antibodies we used. Overall, these data support our assertion that the primary antibodies used in the present experiment were detecting the AT1R and AT2R antigens.

In summary, the current study showed an age-related increase in AT2R protein expression in the developing mouse from fetus to six weeks of age, with the lowest level in the fetus and the highest level in the adult. This finding is diametrically opposite to the currently held notion concerning AT2R expression during development. In contrast to AT2R, an age-related decrease in AT1R protein expression was observed. More interestingly, the developmental expression changes between AT2R and AT1R protein appear to be closely and negatively related. Combing these data with the previous report describing AT1R and AT2R expression patterns in developing rats¹¹ and in rats with chronic heart failure⁴¹ and hypertension^{40;42;43}, we propose the AT1R and AT2R expression profile shown in figure 7. We believe that at all ages the AT1R always acts as the predominant subtype receptor. The final output of RAS function, namely Ang II signaling, is therefore always dominated by the AT1R. Thus administration of Ang II invariably evokes hypertension in all intact animals, including in the fetus^{19;20;25;26}. This hypothesis, however, raises the question: what is the real role of the AT2R? Based on previous reports and the results from the present experiment, we further suggest that the AT2R might act as a “brake” on AT1R signaling (i.e. as a buffer) via directly contradicting AT1R function and/or indirectly down regulating AT1R expression.

Acknowledgments

We would like to acknowledge the expert technical assistance of Johnnie F. Hackley and Pamela Curry. The authors appreciate critical suggestions for these experiments and valuable revision of the manuscript by Dr. Irving H. Zucker.

Sources of Funding

This study was supported by a Scientist Development Grant from the American Heart Association 0635007N and NIH grants RO1HL093028 and P30HL101296.

References

1. de GM, Catt KJ, Inagami T, Wright JW, Unger T. International union of pharmacology. XXIII. The angiotensin II receptors. *Pharmacol Rev.* 2000; 52:415–72. [PubMed: 10977869]
2. Paul M, Poyan MA, Kreutz R. Physiology of local renin-angiotensin systems. *Physiol Rev.* 2006; 86:747–803. [PubMed: 16816138]
3. Kaschina E, Unger T. Angiotensin AT1/AT2 receptors: regulation, signalling and function. *Blood Press.* 2003; 12:70–88. [PubMed: 12797627]
4. Carey RM. Update on the role of the AT2 receptor. *Curr Opin Nephrol Hypertens.* 2005; 14:67–71. [PubMed: 15586018]
5. Millan MA, Jacobowitz DM, Aguilera G, Catt KJ. Differential distribution of AT1 and AT2 angiotensin II receptor subtypes in the rat brain during development. *Proc Natl Acad Sci U S A.* 1991; 88:11440–4. [PubMed: 1763058]
6. Grady EF, Sechi LA, Griffin CA, Schambelan M, Kalinyak JE. Expression of AT2 receptors in the developing rat fetus. *J Clin Invest.* 1991; 88:921–33. [PubMed: 1885777]
7. Tsutsumi K, Saavedra JM. Characterization and development of angiotensin II receptor subtypes (AT1 and AT2) in rat brain. *Am J Physiol.* 1991; 261(1 Pt 2):R209–R216. [PubMed: 1858948]
8. Sechi LA, Griffin CA, Grady EF, Kalinyak JE, Schambelan M. Characterization of angiotensin II receptor subtypes in rat heart. *Circ Res.* 1992; 71:1482–9. [PubMed: 1423940]
9. Shanmugam S, Corvol P, Gasc JM. Angiotensin II type 2 receptor mRNA expression in the developing cardiopulmonary system of the rat. *Hypertension.* 1996; 28:91–7. [PubMed: 8675270]
10. Aguilera G, Kapur S, Feuillan P, Sunar-Akbasak B, Bathia AJ. Developmental changes in angiotensin II receptor subtypes and AT1 receptor mRNA in rat kidney. *Kidney Int.* 1994; 46:973–9. [PubMed: 7861723]

11. Yu L, Zheng M, Wang W, Rozanski GJ, Zucker IH, Gao L. Developmental changes in AT1 and AT2 receptor-protein expression in rats. *J Renin Angiotensin Aldosterone Syst.* 2010; 11:214–21. [PubMed: 20807798]
12. Shekhar A, Johnson PL, Sajdyk TJ, Fitz SD, Keim SR, Kelley PE, Gehlert DR, DiMicco JA. Angiotensin-II is a putative neurotransmitter in lactate-induced panic-like responses in rats with disruption of GABAergic inhibition in the dorsomedial hypothalamus. *J Neurosci.* 2006; 26:9205–15. [PubMed: 16957077]
13. Jones ES, Vinh A, McCarthy CA, Gaspari TA, Widdop RE. AT2 receptors: functional relevance in cardiovascular disease. *Pharmacol Ther.* 2008; 120:292–316. [PubMed: 18804122]
14. Ichiki T, Labosky PA, Shiota C, Okuyama S, Imagawa Y, Fogo A, Niimura F, Ichikawa I, Hogan BL, Inagami T. Effects on blood pressure and exploratory behaviour of mice lacking angiotensin II type-2 receptor. *Nature.* 1995; 377:748–50. [PubMed: 7477267]
15. Hein L, Barsh GS, Pratt RE, Dzau VJ, Kobilka BK. Behavioural and cardiovascular effects of disrupting the angiotensin II type-2 receptor in mice. *Nature.* 1995; 377:744–7. [PubMed: 7477266]
16. Shi L, Hu F, Morrissey P, Yao J, Xu Z. Intravenous angiotensin induces brain c-fos expression and vasopressin release in the near-term ovine fetus. *Am J Physiol Endocrinol Metab.* 2003; 285:E1216–E1222. [PubMed: 12933353]
17. Shi L, Yao J, Stewart L, Xu Z. Brain C-FOS expression and pressor responses after I.V. or I.C.V. angiotensin in the near-term ovine fetus. *Neuroscience.* 2004; 126:979–87. [PubMed: 15207331]
18. Xu Z, Shi L, Hu F, White R, Stewart L, Yao J. In utero development of central ANG-stimulated pressor response and hypothalamic fos expression. *Brain Res Dev Brain Res.* 2003; 145:169–76.
19. Xu Z, Shi L, Yao J. Central angiotensin II-induced pressor responses and neural activity in utero and hypothalamic angiotensin receptors in preterm ovine fetus. *Am J Physiol Heart Circ Physiol.* 2004; 286:H1507–H1514. [PubMed: 14684369]
20. Shi L, Guerra C, Yao J, Xu Z. Vasopressin mechanism-mediated pressor responses caused by central angiotensin II in the ovine fetus. *Pediatr Res.* 2004; 56:756–62. [PubMed: 15347766]
21. Shi L, Mao C, Thornton SN, Sun W, Wu J, Yao J, Xu Z. Effects of intracerebroventricular losartan on angiotensin II-mediated pressor responses and c-fos expression in near-term ovine fetus. *J Comp Neurol.* 2005; 493:571–9. [PubMed: 16304626]
22. Shi L, Mao C, Wu J, Morrissey P, Lee J, Xu Z. Effects of i.c.v. losartan on the angiotensin II-mediated vasopressin release and hypothalamic fos expression in near-term ovine fetuses. *Peptides.* 2006; 27:2230–8. [PubMed: 16677737]
23. Burrell JH, Hegarty BD, McMullen JR, Lumbers ER. Effects of gestation on ovine fetal and maternal angiotensin receptor subtypes in the heart and major blood vessels. *Exp Physiol.* 2001; 86:71–82. [PubMed: 11429622]
24. Hegarty BD, Burrell JH, Gibson KJ, McMullen JR, Lumbers ER. Effect of cortisol on fetal ovine vascular angiotensin II receptors and contractility. *Eur J Pharmacol.* 2000; 406:439–48. [PubMed: 11040351]
25. Stevenson KM, Gibson KJ, Lumbers ER. Effects of losartan on the cardiovascular system, renal haemodynamics and function and lung liquid flow in fetal sheep. *Clin Exp Pharmacol Physiol.* 1996; 23:125–33. [PubMed: 8819640]
26. Stevenson KM, Lumbers ER. Effects of angiotensin II in fetal sheep and modification of its actions by indomethacin. *J Physiol.* 1995; 487 (Pt 1):147–58. [PubMed: 7473244]
27. Gao L, Zucker IH. AT2 receptor signaling and sympathetic regulation. *Curr Opin Pharmacol.* 2011; 11:124–130. [PubMed: 21159555]
28. Mao C, Shi L, Xu F, Zhang L, Xu Z. Development of fetal brain renin-angiotensin system and hypertension programmed in fetal origins. *Prog Neurobiol.* 2009; 87:252–63. [PubMed: 19428956]
29. Fiselier T, Monnens L, van MP, Jansen M, Peer P, Lijnen P. The renin-angiotensin-aldosterone system in infancy and childhood in basal conditions and after stimulation. *Eur J Pediatr.* 1984; 143:18–24. [PubMed: 6391924]

30. Miyawaki M, Okutani T, Higuchi R, Yoshikawa N. Plasma angiotensin II concentrations in the early neonatal period. *Arch Dis Child Fetal Neonatal Ed.* 2006; 91:F359–F362. [PubMed: 16595591]
31. Fiselier TJ, Lijnen P, Monnens L, van MP, Jansen M, Peer P. Levels of renin, angiotensin I and II, angiotensin-converting enzyme and aldosterone in infancy and childhood. *Eur J Pediatr.* 1983; 141:3–7. [PubMed: 6315441]
32. Broughton PF, Smales OR, O'Callaghan M. Renin and angiotensin levels in children. *Arch Dis Child.* 1981; 56:298–302. [PubMed: 7018406]
33. Broughton PF, Kirkpatrick SM, Lumbers ER, Mott JC. Renin and angiotensin-like levels in foetal, new-born and adult sheep. *J Physiol.* 1974; 241:575–88. [PubMed: 4373566]
34. Broughton PF, Mott JC, Robertson NR. Angiotensin II-like activity in circulating arterial blood in immature and adult rabbits. *J Physiol.* 1971; 218:385–403. [PubMed: 4399410]
35. Lasaitiene D, Chen Y, Adams MA, Friberg P. Further insights into the role of angiotensin II in kidney development. *Clin Physiol Funct Imaging.* 2006; 26:197–204. [PubMed: 16836691]
36. Chen Y, Lasaitiene D, Friberg P. The renin-angiotensin system in kidney development. *Acta Physiol Scand.* 2004; 181:529–35. [PubMed: 15283767]
37. Friberg P, Sundelin B, Bohman SO, Bobik A, Nilsson H, Wickman A, Gustafsson H, Petersen J, Adams MA. Renin-angiotensin system in neonatal rats: induction of a renal abnormality in response to ACE inhibition or angiotensin II antagonism. *Kidney Int.* 1994; 45:485–92. [PubMed: 8164437]
38. Tufro-McReddie A, Romano LM, Harris JM, Ferder L, Gomez RA. Angiotensin II regulates nephrogenesis and renal vascular development. *Am J Physiol.* 1995; 269(1 Pt 2):F110–F115. [PubMed: 7631824]
39. Tsuchida S, Matsusaka T, Chen X, Okubo S, Niimura F, Nishimura H, Fogo A, Utsunomiya H, Inagami T, Ichikawa I. Murine double nullizygotes of the angiotensin type 1A and 1B receptor genes duplicate severe abnormal phenotypes of angiotensinogen nullizygotes. *J Clin Invest.* 1998; 101:755–60. [PubMed: 9466969]
40. Peng JF, Phillips MI. Opposite regulation of brain angiotensin type 1 and type 2 receptors in cold-induced hypertension. *Regul Pept.* 2001; 97:91–102. [PubMed: 11164944]
41. Gao L, Wang WZ, Wang W, Zucker IH. Imbalance of angiotensin type 1 receptor and angiotensin II type 2 receptor in the rostral ventrolateral medulla: potential mechanism for sympathetic overactivity in heart failure. *Hypertension.* 2008; 52:708–14. [PubMed: 18768398]
42. Landgraf SS, Wengert M, Silva JS, Zapata-Sudo G, Sudo RT, Takiya CM, Pinheiro AA, Caruso-Neves C. Changes in angiotensin receptors expression play a pivotal role in the renal damage observed in spontaneously hypertensive rats. *Am J Physiol Renal Physiol.* 2011; 300:F499–F510. [PubMed: 21084406]
43. Zhou J, Pavel J, Macova M, Yu ZX, Imboden H, Ge L, Nishioku T, Dou J, Delgiacco E, Saavedra JM. AT1 receptor blockade regulates the local angiotensin II system in cerebral microvessels from spontaneously hypertensive rats. *Stroke.* 2006; 37:1271–6. [PubMed: 16601219]
44. Silva-Antonialli MM, Tostes RC, Fernandes L, Fior-Chadi DR, Akamine EH, Carvalho MH, Fortes ZB, Nigro D. A lower ratio of AT1/AT2 receptors of angiotensin II is found in female than in male spontaneously hypertensive rats. *Cardiovasc Res.* 2004; 62:587–93. [PubMed: 15158151]
45. Macova M, Armando I, Zhou J, Baiardi G, Tyurmin D, Larrayoz-Roldan IM, Saavedra JM. Estrogen reduces aldosterone, upregulates adrenal angiotensin II AT2 receptors and normalizes adrenomedullary Fra-2 in ovariectomized rats. *Neuroendocrinology.* 2008; 88:276–86. [PubMed: 18679017]
46. Samuelsson AM, Alexanderson C, Molne J, Haraldsson B, Hansell P, Holmang A. Prenatal exposure to interleukin-6 results in hypertension and alterations in the renin-angiotensin system of the rat. *J Physiol.* 2006; 575(Pt 3):855–67. [PubMed: 16825309]
47. Mao C, Zhang H, Xiao D, Zhu L, Ding Y, Zhang Y, Wu L, Xu Z, Zhang L. Perinatal nicotine exposure alters AT 1 and AT 2 receptor expression pattern in the brain of fetal and offspring rats. *Brain Res.* 2008; 1243:47–52. [PubMed: 18926802]

48. Mao C, Hou J, Ge J, Hu Y, Ding Y, Zhou Y, Zhang H, Xu Z, Zhang L. Changes of renal AT1/AT2 receptors and structures in ovine fetuses following exposure to long-term hypoxia. *Am J Nephrol.* 2010; 31:141–50. [PubMed: 19923800]
49. Pavel J, Terron JA, Benicky J, Falcon-Neri A, Rachakonda A, Inagami T, Saavedra JM. Increased angiotensin II AT1 receptor mRNA and binding in spleen and lung of AT2 receptor gene disrupted mice. *Regul Pept.* 2009; 158:156–66. [PubMed: 19766151]
50. Saavedra JM, Hauser W, Ciuffo G, Egidy G, Hoe KL, Jhren O, Sembonmatsu T, Inagami T, Armando I. Increased AT(1) receptor expression and mRNA in kidney glomeruli of AT(2) receptor gene-disrupted mice. *Am J Physiol Renal Physiol.* 2001; 280:F71–F78. [PubMed: 11133516]
51. Armando I, Terron JA, Falcon-Neri A, Takeshi I, Hauser W, Inagami T, Saavedra JM. Increased angiotensin II AT(1) receptor expression in paraventricular nucleus and hypothalamic-pituitary-adrenal axis stimulation in AT(2) receptor gene disrupted mice. *Neuroendocrinology.* 2002; 76:137–47. [PubMed: 12218346]
52. Tanaka M, Tsuchida S, Imai T, Fujii N, Miyazaki H, Ichiki T, Naruse M, Inagami T. Vascular response to angiotensin II is exaggerated through an upregulation of AT1 receptor in AT2 knockout mice. *Biochem Biophys Res Commun.* 1999; 258:194–8. [PubMed: 10222259]
53. Macova M, Pavel J, Saavedra JM. A peripherally administered, centrally acting angiotensin II AT2 antagonist selectively increases brain AT1 receptors and decreases brain tyrosine hydroxylase transcription, pituitary vasopressin and ACTH. *Brain Res.* 2009; 1250:130–40. [PubMed: 19038235]
54. Bregonzio C, Seltzer A, Armando I, Pavel J, Saavedra JM. Angiotensin II AT(1) receptor blockade selectively enhances brain AT(2) receptor expression, and abolishes the cold-restraint stress-induced increase in tyrosine hydroxylase mRNA in the locus coeruleus of spontaneously hypertensive rats. *Stress.* 2008; 11:457–66. [PubMed: 18609298]
55. Seltzer A, Bregonzio C, Armando I, Baiardi G, Saavedra JM. Oral administration of an AT1 receptor antagonist prevents the central effects of angiotensin II in spontaneously hypertensive rats. *Brain Res.* 2004; 1028:9–18. [PubMed: 15518636]
56. Bregonzio C, Armando I, Ando H, Jezova M, Baiardi G, Saavedra JM. Anti-inflammatory effects of angiotensin II AT1 receptor antagonism prevent stress-induced gastric injury. *Am J Physiol Gastrointest Liver Physiol.* 2003; 285:G414–G423. [PubMed: 12686508]
57. Zorad S, Dou JT, Benicky J, Hutanu D, Tybitanclova K, Zhou J, Saavedra JM. Long-term angiotensin II AT1 receptor inhibition produces adipose tissue hypotrophy accompanied by increased expression of adiponectin and PPARgamma. *Eur J Pharmacol.* 2006; 552:112–22. [PubMed: 17064684]
58. Saito M, Shinohara Y, Sasaki H, Netsu Y, Yoshida M, Nakahata N. Type 1 angiotensin receptor (AT1-R)-mediated decrease in type 2 angiotensin receptor mRNA level is dependent on Gq and extracellular signal-regulated kinase 1//2 in AT1-R-transfected PC12 cells. *J Neuroendocrinol.* 2008; 20:299–308. [PubMed: 18208547]
59. De PP, Porcellini A, Gigante B, Giliberti R, Lombardi A, Savoia C, Rubattu S, Volpe M. Modulation of the AT2 subtype receptor gene activation and expression by the AT1 receptor in endothelial cells. *J Hypertens.* 1999; 17(12 Pt 2):1873–7. [PubMed: 10703883]
60. Shi L, Mao C, Zeng F, Hou J, Zhang H, Xu Z. Central angiotensin I increases fetal AVP neuron activity and pressor responses. *Am J Physiol Endocrinol Metab.* 2010 Jun; 298(6):E1274–E1282. [PubMed: 20371731]
61. Rowe BP, Saylor DL, Speth RC. Analysis of angiotensin II receptor subtypes in individual rat brain nuclei. *Neuroendocrinology.* 1992; 55:563–73. [PubMed: 1584339]
62. McMullen JR, Gibson KJ, Lumbers ER, Burrell JH. 125I[Sar(1)Ile(8)] angiotensin II has a different affinity for AT(1) and AT(2) receptor subtypes in ovine tissues. *Regul Pept.* 2002; 105:83–92. [PubMed: 11891008]
63. Chang RS, Lotti VJ, Chen TB, Faust KA. Two angiotensin II binding sites in rat brain revealed using [125I]Sar1, Ile8-angiotensin II and selective nonpeptide antagonists. *Biochem Biophys Res Commun.* 1990; 171:813–7. [PubMed: 2403363]

64. Johnston AP, Baker J, Bellamy LM, McKay BR, De LM, Parise G. Regulation of muscle satellite cell activation and chemotaxis by angiotensin II. *PLoS One*. 2010; 5:e15212. [PubMed: 21203566]
65. Amoureux S, Lorgis L, Sicard P, Girard C, Rochette L, Vergely C. Vascular BDNF expression and oxidative stress during aging and the development of chronic hypertension. *Fundam Clin Pharmacol*. 2011 Jan 7.
66. Chan JY, Wang LL, Lee HY, Chan SH. Augmented upregulation by c-fos of angiotensin subtype 1 receptor in nucleus tractus solitarii of spontaneously hypertensive rats. *Hypertension*. 2002; 40:335–41. [PubMed: 12215476]
67. Pringle KG, Tadros MA, Callister RJ, Lumbers ER. The expression and localization of the human placental prorenin/renin-angiotensin system throughout pregnancy: Roles in trophoblast invasion and angiogenesis? *Placenta*. 2011; 32(12):956–62. [PubMed: 22018415]
68. Marques FZ, Pringle KG, Conquest A, Hirst JJ, Markus MA, Sarris M, Zakar T, Morris BJ, Lumbers ER. Molecular characterization of renin-angiotensin system components in human intrauterine tissues and fetal membranes from vaginal delivery and cesarean section. *Placenta*. 2011; 32:214–21. [PubMed: 21215447]
69. Hoffmann A, Cool DR. Angiotensin II receptor types 1A, 1B, and 2 in murine neuroblastoma Neuro-2a cells. *J Recept Signal Transduct Res*. 2003; 23:111–21. [PubMed: 12680593]
70. Su J, Palen DI, Boulares H, Matrougui K. Role of ACE/AT2R complex in the control of mesenteric resistance artery contraction induced by ACE/AT1R complex activation in response to Ang I. *Mol Cell Biochem*. 2008; 311:1–7. [PubMed: 18084722]
71. Gao H, Yallampalli U, Yallampalli C. Protein Restriction to Pregnant Rats Increases the Plasma Levels of Angiotensin II and Expression of Angiotensin II Receptors in Uterine Arteries. *Biol Reprod*. 2011 Nov 16.
72. Abadir PM, Foster DB, Crow M, Cooke CA, Rucker JJ, Jain A, Smith BJ, Burks TN, Cohn RD, Fedarko NS, Carey RM, O'Rourke B, Walston JD. Identification and characterization of a functional mitochondrial angiotensin system. *Proc Natl Acad Sci U S A*. 2011; 108:14849–54. [PubMed: 21852574]
73. Thomas WG, Motel TJ, Kule CE, Karoor V, Baker KM. Phosphorylation of the angiotensin II (AT1A) receptor carboxyl terminus: a role in receptor endocytosis. *Mol Endocrinol*. 1998; 12:1513–24. [PubMed: 9773975]
74. Balmforth AJ, Shepherd FH, Warburton P, Ball SG. Evidence of an important and direct role for protein kinase C in agonist-induced phosphorylation leading to desensitization of the angiotensin AT1A receptor. *Br J Pharmacol*. 1997; 122:1469–77. [PubMed: 9421297]
75. Tsuzuki S, Ichiki T, Nakakubo H, Kitami Y, Guo DF, Shirai H, Inagami T. Molecular cloning and expression of the gene encoding human angiotensin II type 2 receptor. *Biochem Biophys Res Commun*. 1994; 200:1449–54. [PubMed: 8185599]
76. Kambayashi Y, Bardhan S, Takahashi K, Tsuzuki S, Inui H, Hamakubo T, Inagami T. Molecular cloning of a novel angiotensin II receptor isoform involved in phosphotyrosine phosphatase inhibition. *J Biol Chem*. 1993; 268:24543–6. [PubMed: 8227011]
77. Servant G, Dudley DT, Escher E, Guillemette G. Analysis of the role of N-glycosylation in cell-surface expression and binding properties of angiotensin II type-2 receptor of rat pheochromocytoma cells. *Biochem J*. 1996; 313 (Pt 1):297–304. [PubMed: 8546698]
78. Servant G, Dudley DT, Escher E, Guillemette G. The marked disparity between the sizes of angiotensin type 2 receptors from different tissues is related to different degrees of N-glycosylation. *Mol Pharmacol*. 1994; 45:1112–8. [PubMed: 8022404]

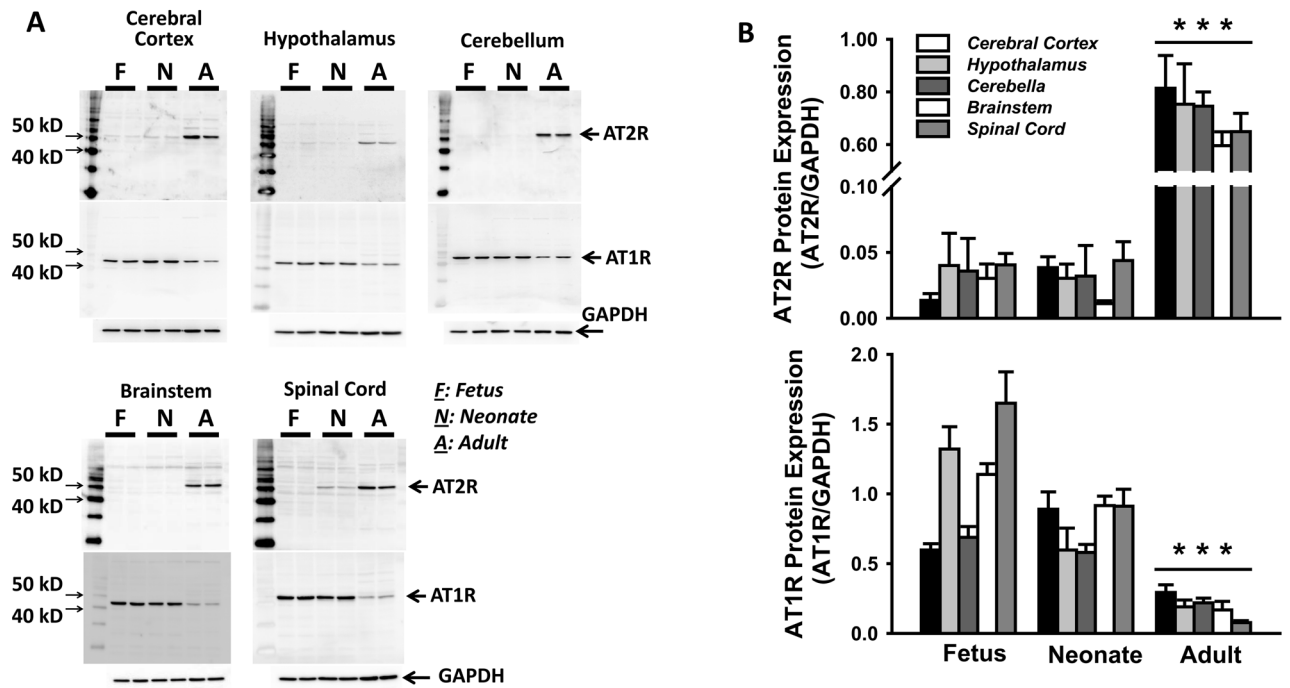


Figure 1. AT2R and AT1R protein expression from total protein extracts of various brain regions and spinal cord of fetal, neonatal, and adult mice. *** $P < 0.001$ vs counterpart brain regions or spinal cord from fetus and neonate; $n = 4$ /group.

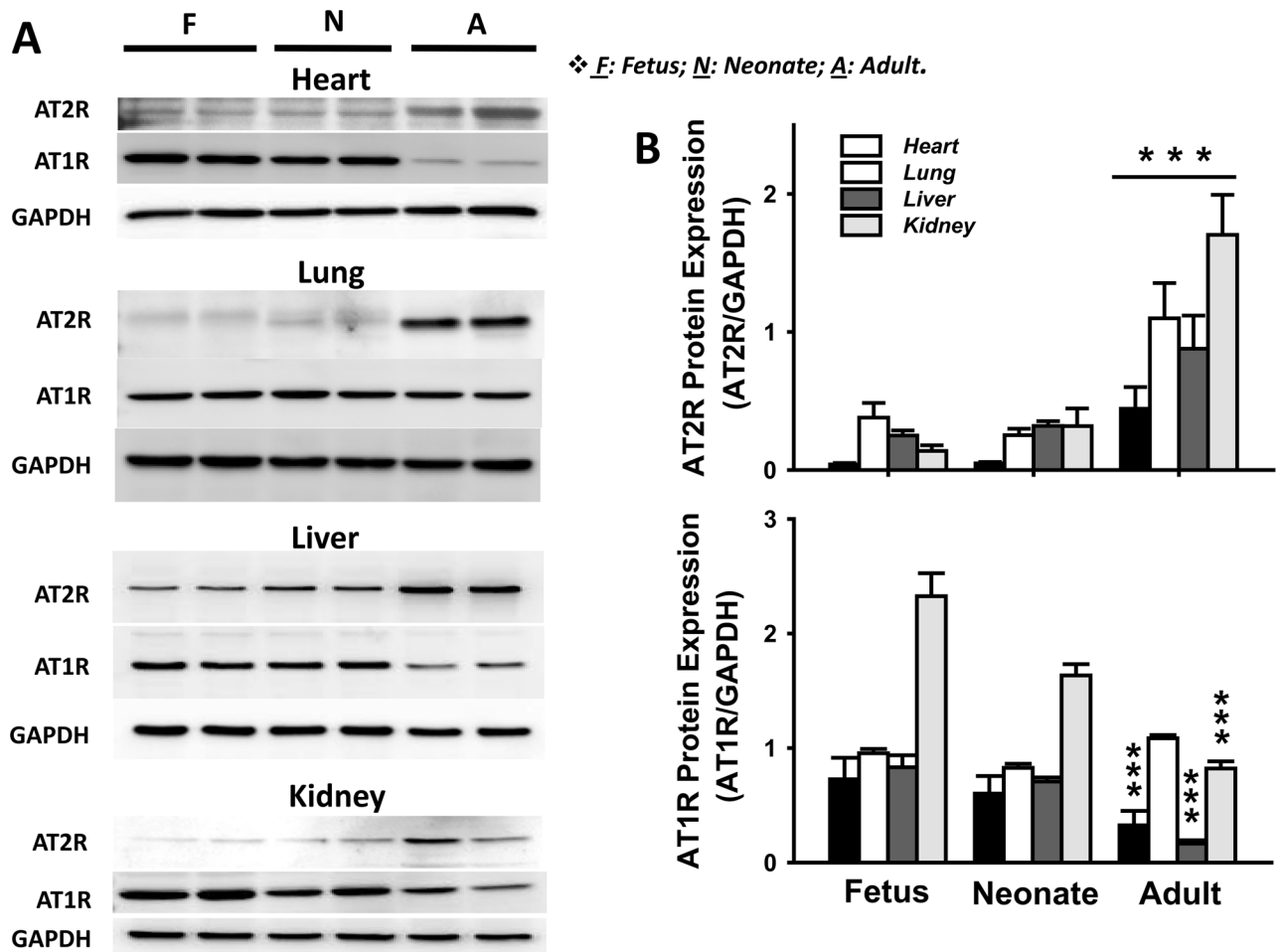


Figure 2. AT2R and AT1R expression from total protein extracts from heart, lung, liver, and kidney of fetal, neonatal, and adult mice. *** $P < 0.001$ vs counterpart organs from fetus and neonate; $n = 4$ /group.

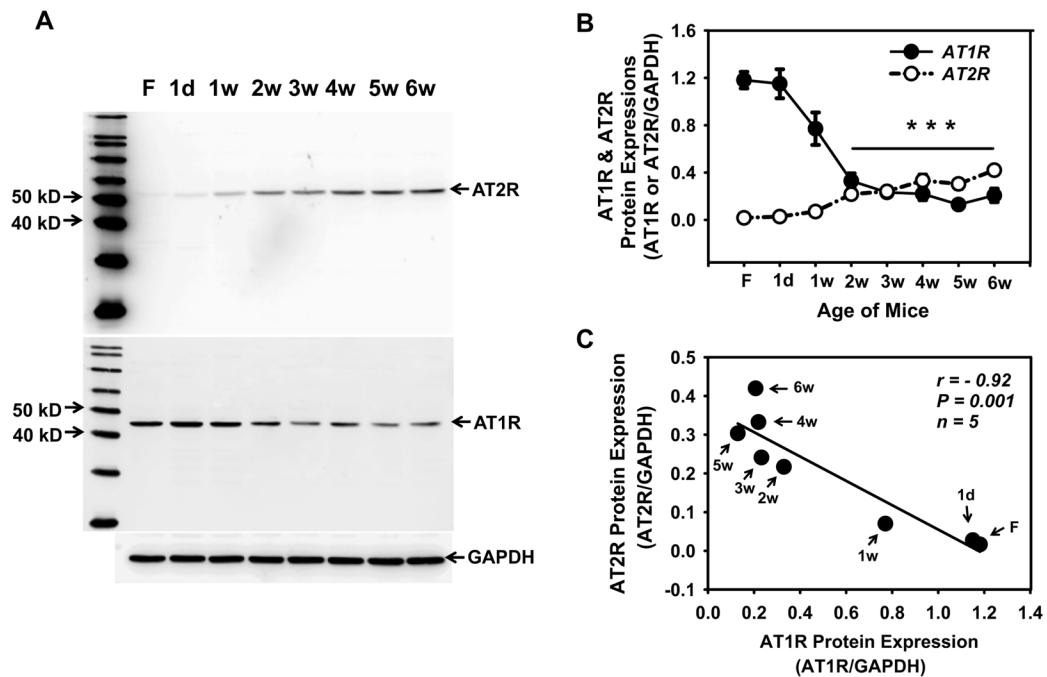


Figure 3. Consecutive AT2R and AT1R expressions from total protein extracts of brainstem from fetus to 6 week old mice. Panel A: A representative Western blot shows AT2R and AT1R expression. Panel B: Line plot showing the developing changes of AT2R and AT1R from fetus to 6 week old mice. *** $P < 0.001$ vs fetus, 1 day, and 1 week mice; $n = 5$ /group. Panel C: Correlation for the developing change between AT2R and AT1R.

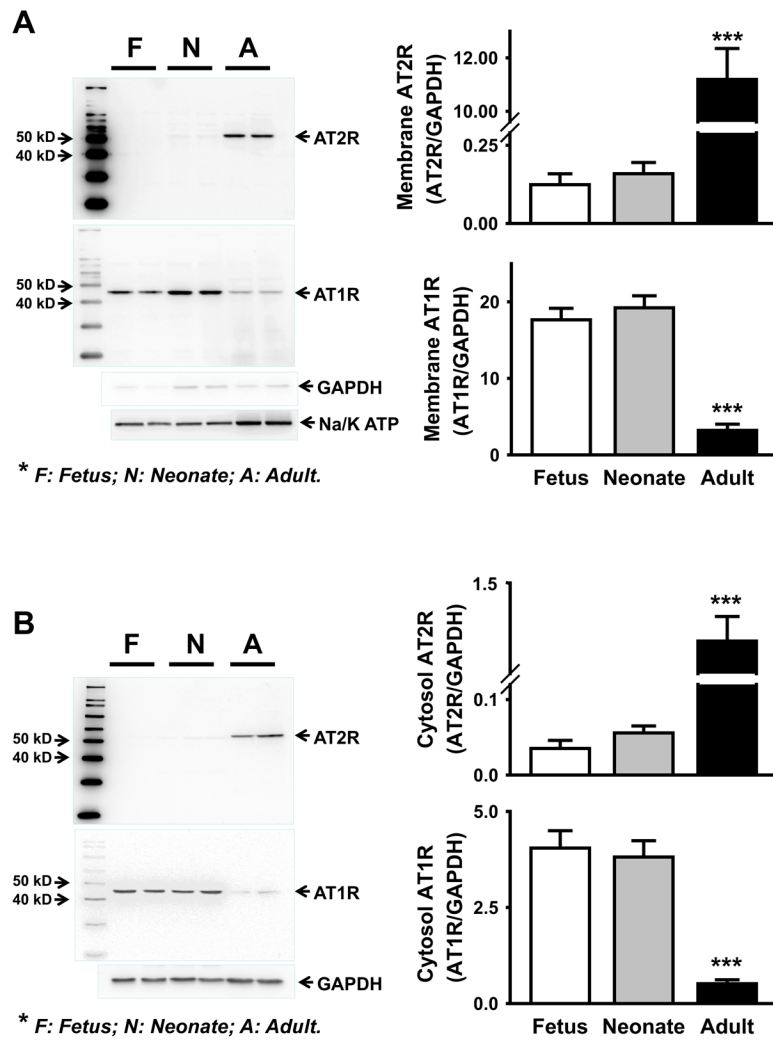
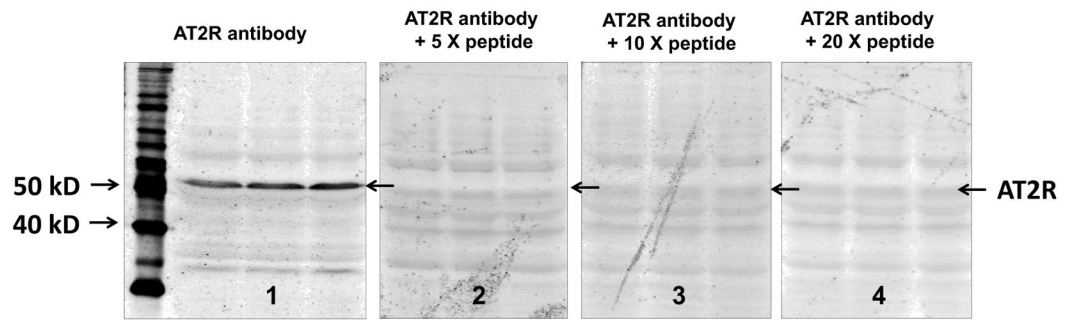


Figure 4. AT2R and AT1R expression in membrane (A) and cytosolic (B) protein extracts from brainstem of fetus, neonate, and adult. *** $P < 0.001$ vs counterpart in fetus and neonate; $n = 4$ /group.

Adult Rat Adrenal Medulla Lysate



Adult Rat PVN Lysate

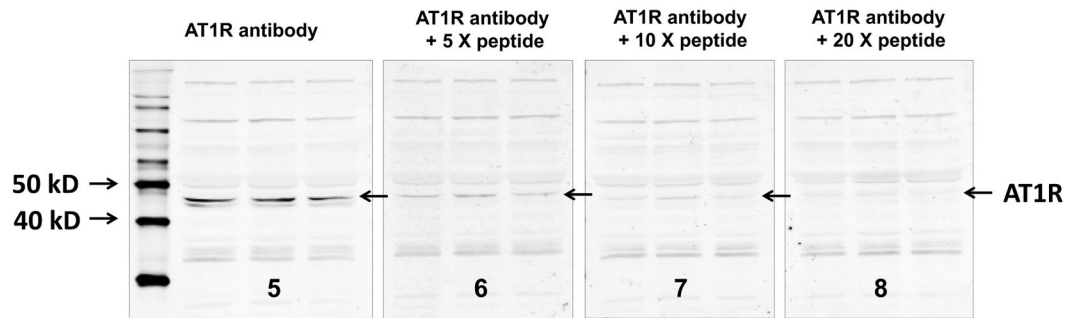


Figure 5.

AT2R and AT1R positive tissue control test and antibody preabsorption test. The upper panels show the AT2R immunostaining bands from rat adrenal medulla extract with intact AT2R antibody (blot 1, positive control test) or preabsorbed AT2R antibodies (blots 2–4, preabsorption test). The lower panels show the AT1R immunostaining bands from rat PVN extract with intact AT1R antibody (blot 5, positive control test) or preabsorbed AT1R antibodies (blots 6–8, preabsorption test).

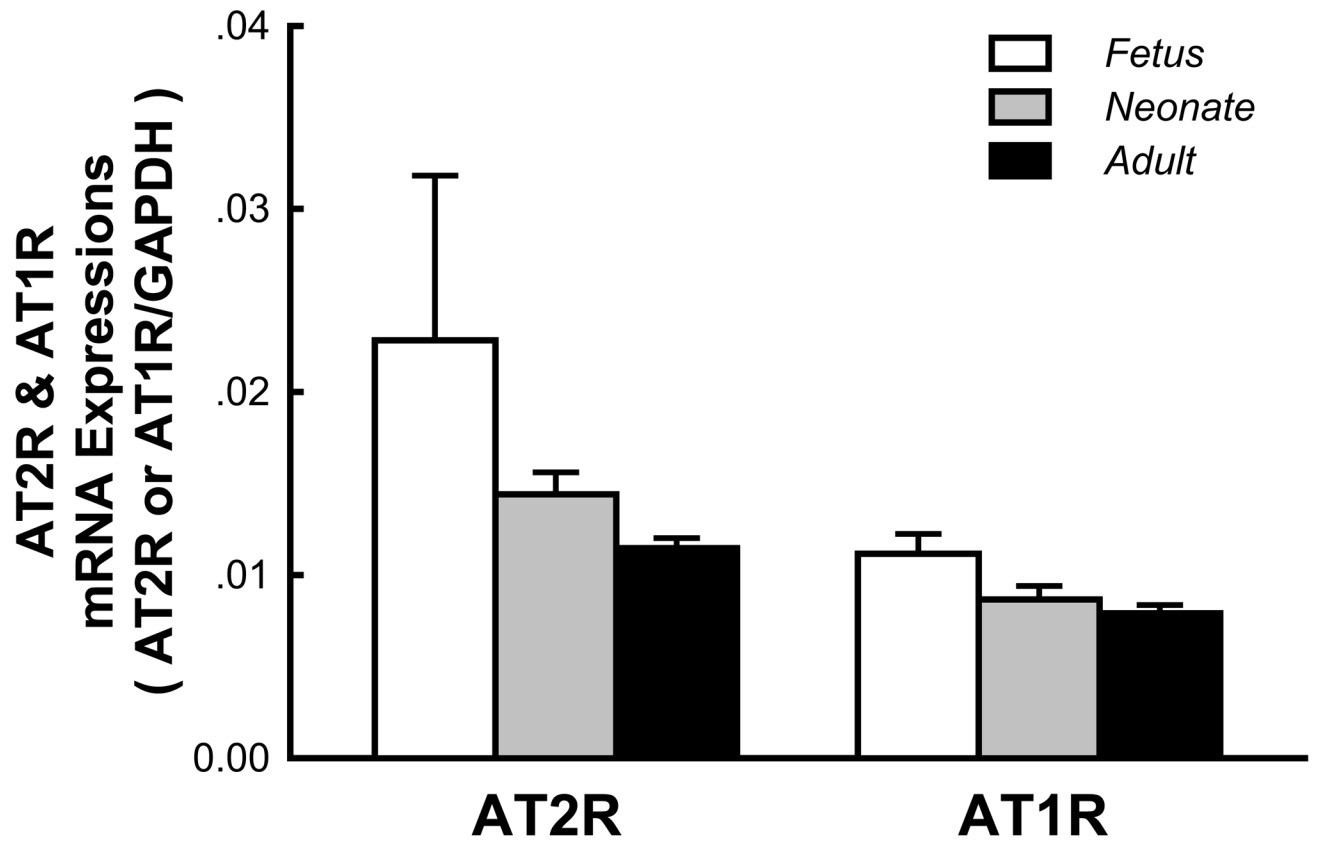
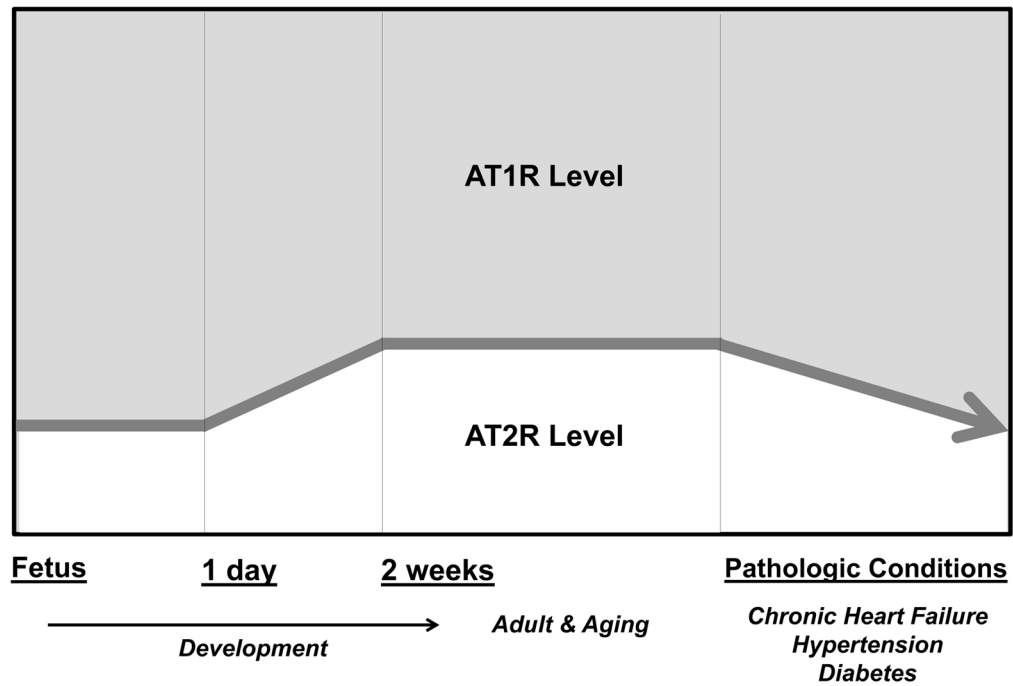


Figure 6. AT2R and AT1R mRNA expression in the brainstem of fetal, neonatal, and adult mice. n = 6/group.



Inverse Expression of AT1R and AT2R in development and pathologic conditions

Figure 7.
Proposed AT2R and AT1R expression profile during development and under pathological conditions.

Table 1

Gene-specific primers for real-time PCR.

Name of genes (Accession No.)	Forward primers	Reverse primers	Amplicon Size (nt [*])
Mouse AT2R (NM_007429)	GAAGCTCCGCAGTGTGTTTA	TGGCTAGGCTGATTACATGC	147
Mouse AT1R (NM_177322)	GTGTTTCCTGCTCACGTGTCT	GATGATGCAGGTGACTTTGG	108
Mouse GAPDH (NM_001001303)	ACAACCTTTGGCATTGTGGAA	GATGCAGGGATGATGTTCTG	133
Mouse Sry (NM_011564)	CTCATCGGAGGGCTAAAGTG	AAGCTTTGCTGGTTTTTGA	166

*
nt, nucleotide numbers.