

Correlations between Root-Associated Microorganisms and Peach Replant Disease Symptoms in a California Soil

Jiue-in Yang^{1,2}, Paul M. Ruegger^{1,2}, Michael V. McKenry^{1,2}, J. Ole Becker^{1,2}, James Borneman^{1,2*}

1 Department of Nematology, University of California Riverside, Riverside, California, United States of America, **2** Department of Plant Pathology and Microbiology, University of California Riverside, Riverside, California, United States of America

Abstract

Background: Replant disease often occurs when certain crops are “replanted” in a soil that had previously supported the same or similar plant species. This disease typically leads to reductions in plant growth, crop yields, and production duration, and its etiology remains ill-defined. The objective of this study was to identify microorganisms associated with peach replant disease symptoms at a field location in California, USA. Soil samples were subjected to treatments to create various levels of replant disease symptoms. Clonal peach seedlings were grown in the treated soils in greenhouse trials. After 6 weeks, plant growth parameters were measured, and both culture and culture-independent analyses were performed to identify root-associated bacteria, fungi and stramenopiles.

Results: A total of 295,785 bacterial operational taxonomic units (OTU) were identified by an Illumina-based, high throughput sequence analysis of rRNA genes. Among the 60 most abundant OTUs, 27 showed significant ($P < 0.05$) negative correlation with peach shoot weights while 10 were positively correlated. Most of these OTUs belonged to the bacterial phylum Proteobacteria (96%), including the classes Gammaproteobacteria (44.4%), Betaproteobacteria (33.3%) and Alphaproteobacteria (22.2%), and the orders Pseudomonadales, Burkholderiales, Chromatiales, Rhodocyclales, and Sphingomonadales. The most abundant fungi were *Trichoderma asperellum*, *Trichoderma virens*, *Fusarium oxysporum*, *Ceratocystis fimbriata* and *Fusarium solani*. The most abundant stramenopiles were *Pythium vexans*, *Pythium violae* and an unidentified *Aplanochytrium* species. Validation experiments using sequence-selective quantitative PCR analyses identified negative and positive associations between *P. vexans* and *Trichoderma* spp. and peach shoot weights, respectively.

Conclusions: This study identified numerous microorganisms associated with peach replant symptoms, some of which have been previously identified while others represent new candidates. Subsequent Koch's postulates investigations will assess their possible roles in this replant disease.

Citation: Yang J-i, Ruegger PM, McKenry MV, Becker JO, Borneman J (2012) Correlations between Root-Associated Microorganisms and Peach Replant Disease Symptoms in a California Soil. PLoS ONE 7(10): e46420. doi:10.1371/journal.pone.0046420

Editor: Ching-Hong Yang, University of Wisconsin-Milwaukee, United States of America

Received: May 17, 2012; **Accepted:** August 29, 2012; **Published:** October 5, 2012

Copyright: © 2012 Yang et al. This is an open-access article distributed under the terms of the Creative Commons Attribution License, which permits unrestricted use, distribution, and reproduction in any medium, provided the original author and source are credited.

Funding: This project was supported by Cooperative State Research, Education, and Extension Service, United States of America Department of Agriculture, under Award No. 2005-51102-02340, and by the University of California Agricultural Experiment Station. The funders had no role in study design, data collection and analysis, decision to publish, or preparation of the manuscript.

Competing Interests: The authors have declared that no competing interests exist.

* E-mail: borneman@ucr.edu

Introduction

Replant diseases of pome, stone fruits, and closely related ornamentals have been reported in all of the major crop-growing regions of the world [1–3]. The problems are typically expressed as a dramatic reduction in plant growth and vigor, with a subsequent reduction in yield and a shortened production life. Annual losses in California alone are estimated to be 10–20% [4,5]. As the causes of replant diseases are complex, may differ among regions, and are frequently ill-defined, management strategies have until recently relied on broad-spectrum fumigants such as methyl bromide. The world-wide phase-out of this fumigant, and the lack of available alternatives with similar efficacy, creates an urgent need for identifying the organism(s) that cause replant disease – a discovery that would enable the development of targeted management strategies, and therefore reduce reliance on such fumigants.

Numerous factors have been implicated in replant disease etiology. Putative causal agents have varied considerably among

geographic regions and among orchards in the same region. Abiotic factors such as nutrition, soil structure, and phytotoxic metabolites from roots of previous crops have been implicated [6–9]. Microorganisms including a variety of bacteria, fungi, and oomycetes have also been implicated [10–30]. For example, replant disease in *Prunus* has been associated with an increase in rhizosphere bacilli and higher populations of cyanogenic microorganisms [10].

In this study, we examined a peach replant disease soil located in the center of California's San Joaquin Valley near Parlier, CA, USA. We first determined that there was a biological component to the replant disease symptoms. We then used a population-based approach to identify root-associated bacteria, fungi, and stramenopiles that correlated with replant disease symptoms. Finally, sequence-selective qPCR assays were used to validate selected associations.

Results

Replant Disease Soil

A series of investigations were performed on a soil exhibiting replant disease properties located in Parlier, California, USA. When peach seedlings were planted in this field, they showed reductions in height and trunk-width 10 weeks after planting when compared to seedlings grown in soil fumigated with 1,3-dichloropropene (Telone II®) at 332 lb/acre, broadcast. In addition, the root systems had less developed feeder roots and were slightly darker in color than the ones in the fumigated soil [31].

To further examine the nature of this phenomenon, we performed greenhouse trials comparing plant growth parameters of peach seedlings grown in autoclaved and non-autoclaved portions of this soil. After 10 weeks, root weights, shoot weights, and shoot length were measured. In all cases, plant growth was better in the autoclaved portions (Table 1), indicating a biological component was contributing to the replant disease symptoms.

Bacterial Associations

An Illumina-based, high throughput sequencing analysis of the small-subunit rRNA gene was used to examine root-associated bacteria from plants exhibiting different levels of replant disease symptoms. A total of 295,785 bacterial operational taxonomic units (OTU) were identified, 5,629 of which had significant correlation ($P < 0.05$) with peach shoot weights. We posit that microbes are more likely to impact the host plant if their population densities are high. Thus, our subsequent analyses focused on the most abundant ($> 10,000$ reads) OTUs, 27 of which showed significant ($P < 0.05$) negative correlation with peach shoot weights (Table 2) while 10 were positively correlated (Table 3). Most of the 27 negatively associated OTUs belonged to the bacterial phylum Proteobacteria (96%), including the classes Gammaproteobacteria (44.4%), Betaproteobacteria (33.3%) and Alphaproteobacteria (22.2%). The predominant orders from these 37 OTUs included Pseudomonadales, Burkholderiales, Chromatiales, Rhodocyclales, and Sphingomonadales (Figure 1).

Fungal and Stramenopile Associations

To identify fungi and stramenopiles associated with the replant disease symptoms, both culture and culture-independent analyses were performed on root-associated organisms from plants exhibiting different levels of replant disease symptoms. For the culture-based studies, 295 fungal and stramenopile isolates were obtained and identified by sequence analysis of the rRNA internal transcribed spacer (ITS). For the culture-independent analysis, 274 small-subunit rRNA gene clones were analyzed. In both the fungal and stramenopile analyses, as expected, there was a considerably

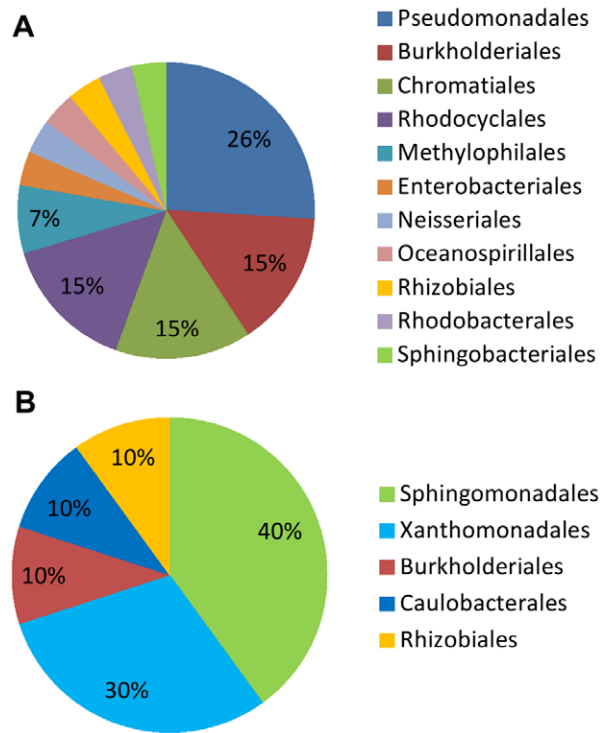


Figure 1. Relative abundance of the most prevalent bacterial orders associated ($P < 0.05$) with fresh peach shoot weights. A. Negative associations. B. Positive associations.
doi:10.1371/journal.pone.0046420.g001

greater number of phlotypes detected in the culture-independent analysis compared to the culture-based analysis.

The most abundant fungi isolated from roots grown in the replant soil were *Trichoderma asperellum* (54%), *Fusarium oxysporum* (16%), and *Trichoderma virens* (15%) (Figure 2A). In contrast, the most abundant fungi obtained from the culture-independent analysis of roots grown in the replant soil were *Ceratocystis fimbriata* (38%) and *F. oxysporum* (16%) (Figure 2B). The most abundant stramenopiles isolated from roots grown in the replant soil were the oomycetes *Pythium vexans* (65%), *Pythium violae* (19%), and *Pythium irregulare* (8%) (Figure 3A). The most abundant stramenopiles obtained from the culture-independent analysis of roots grown in the replant soil were *Pythium vexans* (46%), an unidentified *Pythium* species (13%), and an unidentified *Aplanochytrium* species (13%) (Figure 3B).

The most abundant fungal and stramenopile isolates and phlotypes were subjected to further analysis using sequence-

Table 1. Plant growth parameters of peach seedlings grown in autoclaved and non-autoclaved portions of a replant soil for 10 weeks in greenhouse experiments.

Soil type	Plant growth parameters ^a				
	Fresh weight (g)		Dry weight (g)		Length (cm)
	Roots	Shoots	Roots	Shoots	Shoots
Replant soil	11.17±3.79 x	12.33±5.20 x	2.82±0.84 x	4.36±1.82 x	98.56±20.87 x
Autoclaved replant soil	15.69±3.05 y	22.41±3.64 y	3.61±0.81 y	8.28±1.52 y	126.38±7.73 y

^aValues and standard deviations are the means of 8 replicates pots. Values in columns followed by the same letter are not significantly ($P < 0.05$) different.
doi:10.1371/journal.pone.0046420.t001

Table 2. Most abundant bacterial OTUs negatively associated with fresh peach shoot weights.

OTU designation	Nearest cultured relative (accession) (% identity) ^a	Nearest uncultured relative accession (% identity) ^a	Abundance (% of total reads)	Correlation coefficient (r ^b)	Probability (P)
278666	<i>Hydrogenophaga flava</i> (AB681848) (98%)	HQ120802 (98%)	0.094	-0.687	0.000
243054	<i>Aquabacterium</i> sp. (FN692032) (98%)	HE583131 (98%)	0.082	-0.686	0.000
61	<i>Cupriavidus</i> sp. (AB681843) (100%)	HQ783640 (100%)	0.042	-0.626	0.000
35800	<i>Pseudogulbenkiania</i> sp. (AP012224) (98%)	AB657767 (98%)	0.059	-0.611	0.000
26781	<i>Pseudomonas pachastrellae</i> (HQ425676) (94%)	FJ568592 (100%)	0.198	-0.567	0.000
129755	Bacterium MI-37 (AB529705) (95%)	FJ568592 (97%)	0.065	-0.561	0.000
172482	<i>Azoarcus</i> sp. (AP012304) (100%)	JN825463 (100%)	0.088	-0.554	0.001
234080	<i>Azoarcus</i> sp. (AP012304) (96%)	JN825463 (96%)	0.032	-0.551	0.001
250441	<i>Thiocystis violacea</i> (FN293059) (95%)	JF990363 (98%)	0.111	-0.530	0.002
115618	<i>Pseudomonas fluorescens</i> (JN411289) (98%)	AB579016 (98%)	0.128	-0.520	0.002
273727	<i>Pseudomonas putida</i> (JN411453) (96%)	AB579016 (96%)	0.037	-0.503	0.003
210082	<i>Dechloromonas</i> sp. (GU202936) (100%)	GU179639 (100%)	0.044	-0.493	0.004
193280	<i>Pseudomonas</i> sp. (HE586886) (100%)	JQ032435 (100%)	0.023	-0.484	0.005
236351	<i>Rahnella aquatilis</i> (JQ014185) (100%)	JN998890 (100%)	0.036	-0.481	0.005
288392	<i>Ramlibacter</i> sp. (HQ323427) (98%)	FQ690103 (98%)	0.181	-0.468	0.007
184527	<i>Rhizobacter</i> sp. (HE616175) (100%)	FQ659876 (100%)	0.065	-0.458	0.008
244218	<i>Methylophaga thalassica</i> (AB681780) (95%)	HQ697540 (100%)	0.041	-0.427	0.015
207860	<i>Pseudomonas taiwanensis</i> (JQ014182) (100%)	HE650703 (100%)	0.059	-0.415	0.018
273656	<i>Methylobacillus</i> sp. (EU194898) (97%)	FQ659555 (98%)	0.155	-0.405	0.022
17162	<i>Bradyrhizobium</i> sp. (HQ836187) (98%)	JN540015 (98%)	0.259	-0.387	0.029
167695	<i>Methylophilus leisingeri</i> (NR_041258) (100%)	AB635923 (100%)	0.071	-0.387	0.029
246943	<i>Pseudomonas</i> sp. (FN995250) (94%)	FQ659619 (97%)	0.536	-0.374	0.035
166091	<i>Woodsholea maritima</i> (FM886859) (97%)	HE614733 (99%)	0.062	-0.368	0.038
234039	<i>Terrimonas lutea</i> (NR_041250) (100%)	FQ706675 (100%)	0.060	-0.367	0.040
11757	<i>Thiocystis violacea</i> (FN293059) (97%)	FR853185 (99%)	0.046	-0.361	0.042
164910	<i>Pseudomonas</i> sp. (FN995250) (92%)	FQ659619 (95%)	0.110	-0.361	0.042
32731	<i>Cellvibrio japonicus</i> (CP000934) (99%)	HQ691969 (98%)	0.119	-0.360	0.043

^a% identity values are from analyses using BLAST (NCBI) where coverage was at least 96%.

^br is the Pearson's correlation coefficient.

doi:10.1371/journal.pone.0046420.t002

selective qPCR assays targeting the ITS region. For the phylotypes identified by the small-subunit rRNA gene analyses, chromosomal walking procedures were used to obtain the ITS sequences. Using an assay targeting both *Trichoderma* species, a positive association was detected with plant shoot weights [\log_{10} rRNA copy number = 5.97+0.0648 (grams of shoots); $P=0.012$; $R^2=6.5\%$, $n=116$]. Using an assay targeting *P. vexans*, a negative association was detected with plant shoot weights [\log_{10} rRNA copy number = 5.01-0.0931 (grams of shoots); $P=0.008$; $R^2=8.7\%$, $n=116$]. Using an assay targeting *C. fimbriata*, a negative association was detected with plant shoot weights [\log_{10} rRNA copy number = 7.11-0.0574 (grams of shoots); $P=0.097$; $R^2=2.7\%$, $n=104$].

Discussion

To our knowledge, this study presents the first use of high throughput sequencing to examine bacteria associated with replant disease. Given the large number of OTUs identified, it was not surprising that we identified considerable numbers of organisms correlating with plant growth parameters, most of which have not been previously associated with replant disease. In

addition, most of these bacteria are not known to be plant pathogens or have functions that could be readily attributed to replant disease properties. Ultimately, determining the roles that these bacteria may play in replant disease will require additional experimentation, including fulfilling Koch's postulates.

Findings from this study that are consistent with prior work include the identification of several OTUs from the genus *Pseudomonas*, which exhibited negative correlations with peach shoot weights. These phylotypes possess rRNA genes with high sequence identities to *P. pachastrellae*, *P. putida*, *P. fluorescens*, *P. straminea*, *P. fulva*, *P. taiwanensis*, and *P. monteilii* (Table 2, and example in Figure 4A). In prior investigations of root-associated bacteria and replant disease, pseudomonads were shown to be more abundant in the rhizoplane of plants grown in grapevine replant soils [32].

Bacteria from several taxonomic groups, including *Pseudomonas*, have been proposed to play a role in replant disease etiology through the production of hydrogen cyanide (HCN). When soils were amended with peach roots dried at 80°C, they caused retarded growth of peach seedlings [6]. These investigators also showed that peach roots contained considerable amounts of an

Table 3. Most abundant bacterial OTUs positively associated with fresh peach shoot weights.

OTU designation	Nearest cultured relative (accession) (% identity) ^a	Nearest uncultured relative accession (% identity) ^a	Abundance (% of total reads)	Correlation coefficient (<i>r</i> ²)	Probability (<i>P</i>)
164017	<i>Massilia aerilata</i> (HQ406763) (98%)	JN590660 (98%)	0.202	0.546	0.012
101298	<i>Thermomonas haemolytica</i> (GU195191) (98%)	FQ680347 (98%)	0.339	0.532	0.017
286079	<i>Sphingopyxis</i> sp. (JF297627) (99%)	HQ118566 (99%)	0.132	0.447	0.010
66648	<i>Novosphingobium naphthalenivorans</i> (AB681685) (99%)	HQ754243 (99%)	0.154	0.442	0.011
173712	<i>Novosphingobium naphthalenivorans</i> (AB681685) (98%)	HQ754243 (98%)	0.647	0.431	0.014
259461	<i>Sphingopyxis</i> sp. (JF297627) (98%)	HQ118566 (98%)	0.427	0.423	0.016
233081	<i>Rhodopseudomonas palustris</i> (AB689796) (98%)	JN863157 (98%)	0.140	0.422	0.016
162892	<i>Novosphingobium subterraneum</i> (HM032869) (98%)	FQ741870 (98%)	0.464	0.398	0.024
275502	<i>Dyella</i> sp. (GQ369135) (100%)	JF341880 (100%)	0.259	0.394	0.025
30925	<i>Rhodanobacter lindaniclasticus</i> (L76222) (100%)	JF341837 (100%)	0.493	0.366	0.039

^a% identity values are from analyses using BLAST (NCBI) where coverage was at least 96%.

^b*r* is the Pearson's correlation coefficient.

doi:10.1371/journal.pone.0046420.t003

HCN precursor, and roots grown in the replant soils harbored heat-resistant bacilli able to transform this precursor into HCN. While our investigation did not detect bacilli that negatively correlated with plant weights, we did identify significant negative associations with pseudomonas (Table 2), which are also known to produce HCN [33,34]. Other investigations have reported related findings including higher levels of HCN-producing bacilli in the rhizosphere of peach plants grown in a replant soil [10]. In addition, HCN-producing *Pseudomonas* species were isolated from the rhizosphere in an apple replant site [35]. Variation among the results from the aforementioned studies could involve differences in the subtypes of replant diseases and/or the methods used to identify the microbial communities.

Another putatively causal taxon is the actinobacteria, formerly called actinomycetes. Prior microscopic investigations identified large numbers of actinobacteria growing in the epidermal and cortical tissue of apple seedling rootlets grown in replant disease soils, and very few actinobacteria in rootlets grown in non-replant soils [36,37]. In addition, the amount of plant tissue damage was proportional to the number of actinobacteria [36]. In our study, we also identified several actinobacterial OTUs that were negatively associated with plant shoot weights, although they were not present in high numbers (Table 4).

It was surprising to find that Xanthomonadaceae was one of the dominant taxa exhibiting a positive association with plant shoot weights (Table 3, and example in Figure 4B), because these bacteria, and specifically pathovars in the order Xanthomonas, have been shown to cause diseases on at least 124 monocotyledons and 268 dicotyledons [38]. Our results suggest a possible beneficial role of this bacterial group, where these organisms may interact with plants and/or other microbes, leading to plant growth promotion.

Numerous oomycetes also have been implicated in replant disease etiology [12,13,16,18,20,22–24,26–28]. In our study, *P. vexans* was frequently detected by both culture-based and culture-independent analyses. In addition, our sequence-selective qPCR analysis showed a negative correlation between *P. vexans* rRNA gene numbers and peach shoot weights. However, in another peach replant study, *P. vexans* was not significantly correlated with plant biomass [39]. Such site dependent variation has been observed in replant diseases of other crops. For example, *P. vexans*

was shown to be pathogenic to apple seedlings in one study [24] yet exhibited biological control efficacy in another [20]. This phenomenon could be due to virulence differences among the *P. vexans* strains and/or varying interactions with abiotic or biotic features of the soils [40,41].

Several features of *P. vexans* could allow it to contribute to replant disease symptoms. Zoospores of *P. vexans* are attracted to roots at zones of elongation and at breaks in cortical tissue associated with lateral root emersion [42]. In addition, two elicitor-like proteins (Vex1 and Vex2) secreted by *P. vexans* appear to induce a necrotic and hypersensitive response in a manner similar to that observed in *Phytophthora* species [43].

Many fungi also have been implicated in peach replant diseases. For example, *Fusarium equiseti*, *Fusarium moniliforme*, *Fusarium oxysporum*, *Fusarium solani*, *Alternaria tenuis*, *Myrothecium verrucaria*, and *Mycelia sterilia* were frequently isolated from the rhizosphere or roots of peach trees grown in a replant soil and found to be parasitic to the roots [29]. In Kent, England, *Thielaviopsis basicola* was implicated in cherry and plum replant disease [15,25,30]. *Armillaria* and *Verticillium* were associated with peach and almond replant symptoms in California [30]. In Italy, several species of *Fusarium*, *Penicillium*, *Aspergillus*, and *Trichoderma* were common isolates from peach replant soils [17].

Several of the most abundant fungi identified in our study have been previously implicated in replant disease including the abovementioned *F. oxysporum* and *Trichoderma* spp. In addition, the most abundant fungus in our replant soil identified by the culture-independent analysis was *Ceratocystis fimbriata*. Although *C. fimbriata* has been described as the pathogen of mallet wound canker on almond, peach, apricot, and coffee [44,45], and it is the causal agent of many other wilt and rot diseases of sweet potato, poplar, cocoa, citrus, gmelina, and *Eucalyptus* species [46–48], to our knowledge it has not been previously associated with peach replant disease.

Our investigations also identified two *Trichoderma* species that were frequently isolated from peach roots, and that exhibited a positive association with plant shoot weights via a sequence-selective qPCR analysis. These results suggest that these fungi may be inhibiting the causal microbes and/or acting as a plant growth promoter. *Trichoderma* species can inhabit a variety of soil and plant niches [49]. The genus contains members that are plant growth

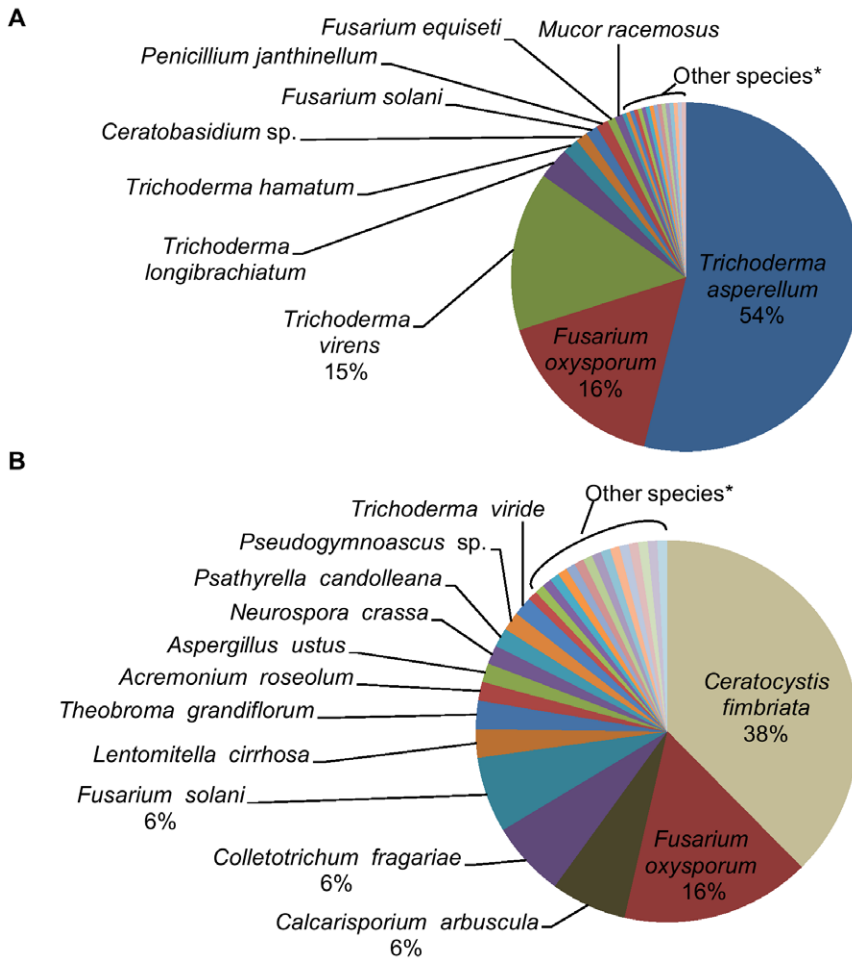


Figure 2. Relative abundance of fungi from peach seedling roots grown in a soil exhibiting peach replant disease symptoms. A. Cultured-based analysis; values are % of 269 isolates. *Species less than 1% included: *Apodus oryzae*, *Ceratocystis fimbriata*, *Clonostachys divergens*, *Cunninghamella echinulata*, *Gelasinospora brevispora*, *Hypocrea koningii*, *Hypocrea* sp., *Mortierella alpina*, *Mortierella minutissima*, *Penicillium simplicissimum*, *Sclerostagonospora opuntiae*, *Sporormia subtincinensis*, *Trichoderma gamsii*, *Trichoderma pubescens*, and *Trichoderma viride*. B. Culture-independent analysis; values are % of 130 sequences. *Species less than 1% included: *Acremonium sclerotigenum*, *Aspergillus niger*, *Brachyconidiellopsis* sp., *Craterocola cerasi*, *Elaphocordyceps ophioglossoides*, *Engyodontium album*, *Halophytophthora vesicular*, *Hypomyces chrysospermus*, *Lithothelium septemseptatum*, *Metarhizopsis microspore*, *Neokarlingia chitinophila*, *Nomuraea rileyi*, *Ophiocordyceps konnoana*, *Sebacina vermifera*, *Verticillium dahlia*, and *Volutella ciliata*. For A and B, taxa without numbers have relative abundance values between 1% and 5%. doi:10.1371/journal.pone.0046420.g002

promoters that act through a variety of mechanisms. *Trichoderma* species produce several lytic enzymes and antibiotics against plant pathogens, and several products made from these fungi have been commercially marketed as biopesticides, biofertilizers, and soil amendments [50]. *Trichoderma virens* is one of the well-studied species, which exhibits mycoparasitic characteristics and the ability to produce several potent epithiodiketopiperazine antibiotics that inhibit oomycetes such as *Pythium* and *Phytophthora* species. It also produces a mixture of peptaibols, which are linear peptide antibiotics that might affect certain bacteria and fungi [51]. Some strains of *T. asperellum* and *T. harzianum* are capable of activating plant defense responses [52,53]. Strains of *T. asperellum* also have been shown to suppress important plant pathogens including *Phytophthora megakarya* [54], *Fusarium oxysporum* f. sp. *lycopersici* [55], *Rhizoctonia solani* [56], and *Meloidogyne javanica* [57].

In sum, this study identified large numbers of microorganisms associated with peach replant disease symptoms in a Californian soil. Such associations point toward organisms that could be causing or inhibiting the replant disease, or that are simply responding to changes in the environment caused by the disease.

Future investigations that assess cause and effect, such as Koch’s postulates experimentation, will be needed to further define the roles of these organisms.

Materials and Methods

Greenhouse Trials

Greenhouse trials were performed to (i) determine if there was a biological component causing the replant disease symptoms and to (ii) create soils with various levels of the replant disease symptoms for microbial community analyses. Soil (upper 30-cm) was collected from a field at the University of California Kearney Agricultural Research and Extension Center in Parlier, California, USA, where replant disease symptoms were observed on Nemaguard rootstocks 10 weeks after planting [31]. Soil texture parameters were 62% sand, 30% silt, and 8% clay. Soil was passed through a metal sieve with 12-mm openings prior to use in greenhouse experiments.

To determine if there was a biological component causing the replant disease symptoms, peach seedling clones were planted in

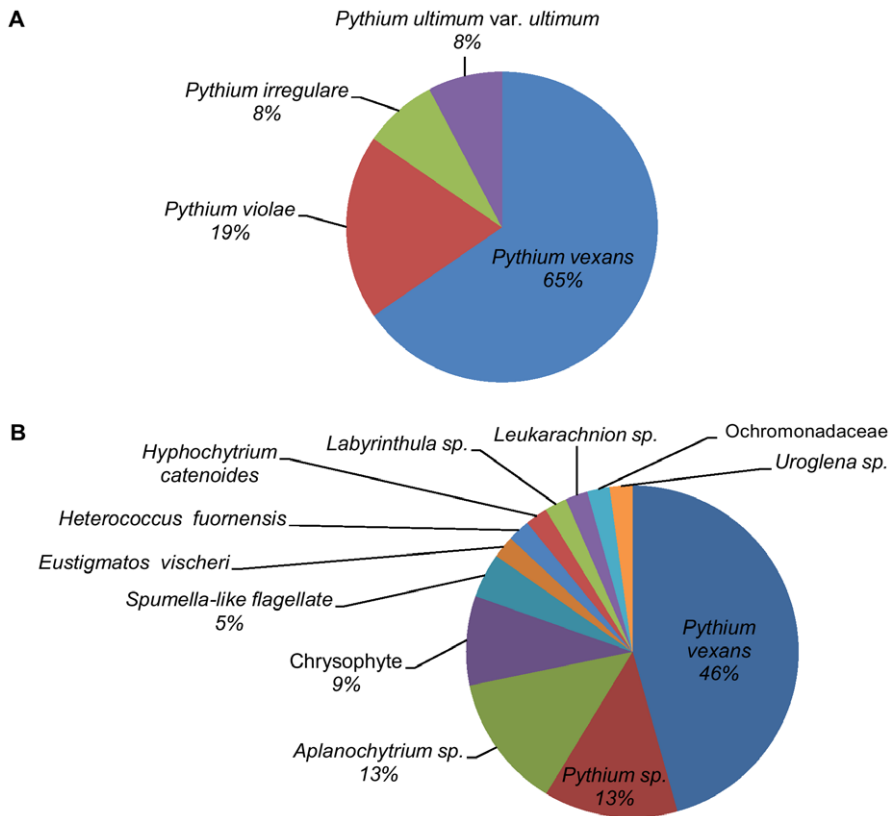


Figure 3. Relative abundance of stramenopiles from peach seedling roots grown in soil exhibiting peach replant disease symptoms. A. Cultured isolates; values are % of 26 isolates. B. Culture-independent analysis; values are % of 48 sequences. Taxa without numbers have relative abundance values of less than 5%. doi:10.1371/journal.pone.0046420.g003

the untreated replant soil and replant soil that had been autoclaved for 2 hours at 121°C. Plastic pots with drain holes were double-cupped and filled with 800-cm³ of the two soils. Each pot was planted with one two-month-old Nemaguard peach seedling clone, donated by Duarte Nursery, Hughson, CA. Each pot was fertilized with 7-g of slow-release fertilizer (Sierra 17-6-10 plus Minors, Scotts-Sierra Horticultural Products Company, Marysville, OH) and watered as needed. Trials were performed in a greenhouse, arranged in a randomized complete design with 8 replicates for each soil treatment. After 10 weeks, root weights, shoot weights and shoot length were measured.

To create soils with various levels of the replant disease symptoms for the microbial community analyses, soils were (i) temperature-treated or (ii) diluted with various amounts of autoclaved soil. For the temperature treatments, soils were exposed to room temperature, 40°C, 50°C, 60°C and 70°C. Soil samples (~1 kg) were double-bagged and submerged in a water bath, and held for 30 minutes once the center of the sample reached the target temperature. The bags were then cooled to room temperature under running tap water. All samples of the same treatment were pooled and mixed. For the dilution treatments, soils were mixed with different percentages of autoclaved soil (121°C for 2 hours) at ratios of non-treated to autoclaved soil of 100:0, 10:90, 1:99, 0.1:99.9 and 0:100. Treated soils were aerated at room temperature for 2 days prior to use. As described above, pots were filled with soil, planted with peach seedling clones, fertilized and watered. Trials were performed in a greenhouse, arranged in a randomized complete design with six replicates for each soil treatment, and performed twice. After 6

weeks, plant shoots were cut off 10-cm above the soil level and weighed. Shoot lengths of each branch were measured from the main stem. Plant dry weights were measured after 3-days in a drying oven at 125°C. Root tip samples (200 mg) from each plant were collected and stored at -20°C for DNA extraction. Fine root tips were collected and stored in sterile tubes at room temperature for culturing of fungi and oomycetes. Plant growth parameters obtained from the greenhouse trials were subjected to ANOVA and two-tailed student t-tests using Microsoft Excel 2007 (Microsoft, Redmond, WA).

Isolation of Fungi and Stramenopiles

Pieces of fine root tips from each of the non-treated replant soils were collected at the end of the trials, stored at room temperature and processed for culturing within 24 hours after sampling. From each replicate pot, 12 pieces of 3-cm-long root tips were rinsed with ultrapure water for 15 seconds, dried by pressing between paper towels, placed on 1% water agar, and incubated at room temperature. Fungi and oomycetes that emerged from the root surfaces during the first 36 hours were sub-cultured on new 1% water agar plates. The hyphal-tip method was used to obtain pure cultures. Isolates were identified by rRNA gene sequence analysis (described below).

DNA Extraction

DNA was extracted from root tip samples collected at the end of the greenhouse trials and fungi and oomycetes cultured from the roots. Two hundred milligrams of root tips or fungal hyphae were used for each DNA extraction. Genomic DNA was extracted using the

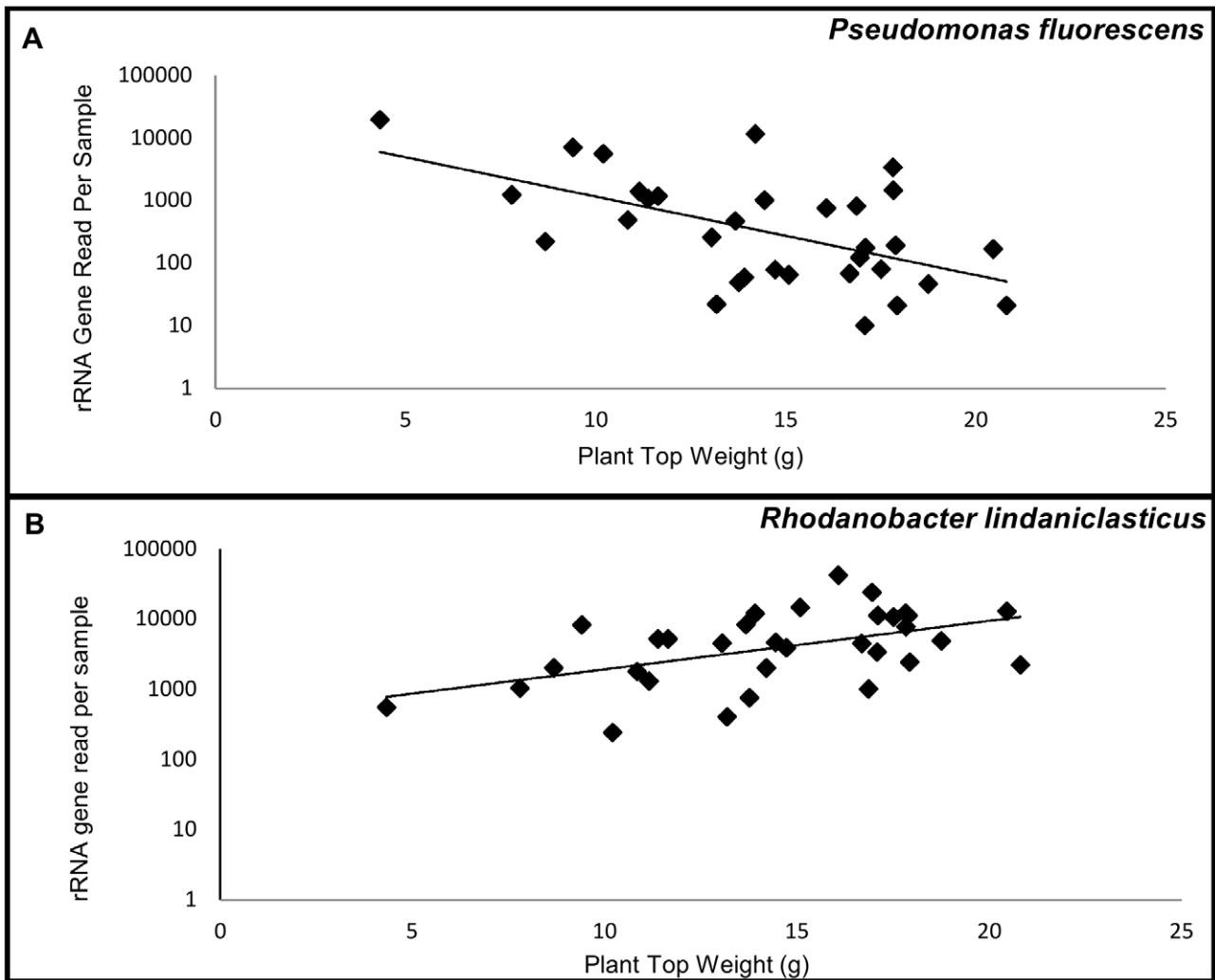


Figure 4. Relationships between bacteria and fresh peach shoot weights. A. *Pseudomonas fluorescens*. B. *Rhodanobacter lindaniclasticus*. Regression equations are (A) $[\log_{10} \text{ reads per sample} = 4.02 - 0.146 (\text{grams of shoots})]$; $P = 0.015$; $R^2 = 18.3\%$, $n = 32$ and (B) $[\log_{10} \text{ reads per sample} = 2.59 + 0.069 (\text{grams of shoots})]$; $P = 0.004$; $R^2 = 25.0\%$, $n = 32$. Lines are from regression analyses. doi:10.1371/journal.pone.0046420.g004

FastDNA Spin Kit for Soil (Qbiogene, Carlsbad, CA) as described by the manufacturer using a 90 second bead-beating step in a FastPrep Instrument (Qbiogene) and a 5.5 setting. The extraction product was

further purified by electrophoresis in 1% agarose gels. DNA larger than 3 Kb was isolated by using a MinElute Gel Extraction Kit (Qiagen, Valencia, CA), without use of UV lighter or ethidium bromide.

Table 4. Actinobacterial OTUs negatively associated with fresh peach shoot weights.

OTU designation	Nearest cultured relative (accession) (% identity) ^a	Nearest uncultured relative accession (% identity) ^a	Abundance (% of total reads)	Correlation coefficient (r^2)	Probability (P)
76253	<i>Catellatospora</i> sp. (KC-EP-56) (FJ711222) (100%)	JF982278 (100%)	<0.001	-0.826	0.000
22707	<i>Solirubrobacter</i> sp. L64 (FJ459990) (90%)	JF987729 (100%)	<0.001	-0.774	0.004
105414	<i>Gaiella occulta</i> (JF423906) (92%)	HM187195 (98%)	<0.001	-0.744	0.025
66985	<i>Aciditerrimonas ferrireducens</i> (AB517669) (84%)	AJ616079 (97%)	<0.001	-0.740	0.027
101423	<i>Phycococcus</i> sp. P3703 (JQ419657) (98%)	CU919577 (99%)	<0.001	-0.738	0.031
163353	<i>Virgisporangium ochraceum</i> (AB546280) (97%)	FJ479084 (100%)	<0.001	-0.734	0.037
266579	<i>Gaiella occulta</i> (JF423906) (94%)	AB656050 (100%)	0.001	-0.732	0.042

^a% identity values are from analyses using BLAST (NCBI) where coverage was at least 88%.

^b r is the Pearson's correlation coefficient; probability values were adjusted using the Bonferroni correction method.

doi:10.1371/journal.pone.0046420.t004

Bacterial rRNA Gene Sequencing

A high throughput sequencing analysis of the bacterial small-subunit rRNA genes was performed using genomic DNA extracted from the root samples collected at the end of the greenhouse trials as templates. Root samples used were from seedlings grown in the non-treated to autoclaved soil ratios of 100:0, 10:90, 1:99, and the temperature treatments of 40°C and 50°C. One hundred microliter amplification reactions were performed in an MJ Research PTC-200 thermal cycler (Bio-Rad Inc., Hercules, CA) and contained: 50 mM Tris (pH 8.3), 500 µg/ml bovine serum albumin (BSA), 2.5 mM MgCl₂, 250 µM of each deoxynucleotide triphosphate (dNTP), 400 nM of each primer, 4 µl of DNA template, and 2.5 units JumpStart *Taq* DNA polymerase (Sigma-Aldrich, St. Louis, MO). The PCR primers (F515/R806) targeted a portion of the 16S rRNA gene containing the hypervariable V4 region, with the reverse primers including a 12-bp barcode (Tables S1 and S2) [58]. Thermal cycling parameters were 94°C for 5 minutes; 35 cycles of 94°C for 20 seconds, 50°C for 20 seconds, and 72°C for 30 seconds, and followed by 72°C for 10 minutes. PCR products were purified using a MinElute Gel Extraction Kit (Qiagen) except PB buffer was substituted with QG buffer. PCR products were diluted to 20 ng/µl. DNA sequencing was performed using an Illumina HiSeq 2000 (Illumina, Inc., San Diego, CA). One hundred base sequencing reads of the 5' end of the amplicons and seven base barcode reads were obtained using the sequencing primers listed in Table S3. De-multiplexing, quality control and OTU binning were performed using QIIME [59]. The 5' base of the barcodes was not used for de-multiplexing because of low quality reads at this position; however, all 32 codes (one for each of the 32 samples) were distinguishable using the last six bases. Low quality sequences were removed using the following parameters: Q20, minimum number of consecutive high quality base calls = 100 bp, maximum number of N characters allowed = 4, maximum number of consecutive low quality base calls allowed before truncating a read = 4. The total number of sequencing reads was 71,320,513. Numbers of sequences removed using the aforementioned quality control parameters were: barcode errors (3,893,840), reads too short in length (17,427,455), and too many Ns (4,072,554). OTUs were binned at 97% identity.

PCR Amplification of Stramenopile and Fungal rRNA Genes

For the culture-independent analysis, root DNA extracted from plants exhibiting a wide range of replant disease symptoms from greenhouse trials were used as templates. Ten microliter amplification reactions were performed in 10-µl glass capillary tubes using a RapidCycler (Idaho Technologies, Salt Lake City, UT) containing the following reagents: 50 mM Tris (pH 8.3), 500 mg/ml bovine serum albumin (BSA), 2.5 mM MgCl₂, 250 mM of each dNTP, 400 nM of each forward and reverse primer, 1-µl (~66 ng) of peach root DNA and 0.5 units *Taq* DNA polymerase. Fungi-selective primers were nu-SSU-0817-5 (TTAGCATGGAA-TAATRRRAATAGGA) and nu-SSU-1536-3 (ATTGCAATG-CYCTATCCCCA) [60] while stramenopiles were StramenoS-SUF1 (GATGATTAGATACCATCGTA) and StramenoSSUR2 (AAAGGGCAGGGACGT) [39], with PCR products being ~762 bp and ~638 bp, respectively. Thermal cycling parameters were 94°C for 5 minutes; 35 cycles of 94°C for 20 seconds, X°C for 30 seconds and 72°C for 40 seconds; followed by 72°C for 5 minutes, where X = 55 for fungi and 59 for stramenopiles.

For the culture-based analyses, fungal and stramenopile (which were all oomycetes) isolates were identified by rRNA gene analyses. rRNA gene primers ITS1FUSER (GGGAAAGUCTTGGTCATTTA-GAGGAAGTAA) [61] and ITS4USER (TCCTCCGCTTATTGATATGC) [62] were used with the following thermal cycling conditions:

94°C for 5 minutes, followed by 40 cycles of 94°C for 20 seconds, 52°C for 20 seconds, 72°C for 40 seconds, and a final incubation at 72°C for 5 minutes. PCR master mixes were prepared as described above in this subsection.

To obtain the sequences of the internal transcribed spacer (ITS) region for *P. vexans* and *C. fimbriata* for the quantitative PCR assays, chromosome walking was conducted as follows. PCR was performed on peach root DNA using the following forward primers combined with ITS4 (TCCTCCGCTTATTGATATGC) [62]: PvexansSSUF3 (GGGACTTTTGGGTAATC) or CfimbSSUF1 (AGGTCCAGACACAG). The forward primers were designed using PRISE [63]. The thermal cycling conditions were 94°C for 5 minutes; 40 cycles of 94°C for 20 seconds, 52°C for 30 seconds and 72°C for 90 seconds; followed by 72°C for 10 minutes. Amplification products were gel isolated and cloned as described previously [39], and the nucleotide sequences were obtained as described below.

Nucleotide sequences of fungi and stramenopile rRNA gene fragments were determined using the ABI BigDye Terminator v3.1 Cycle Sequencing Kit and an ABI 3730xl DNA Analyzer (Applied Biosystems, Foster City, CA). Sequence identities were determined by an analyses using BLAST (NCBI) [64].

Quantitative PCR

Real-time qPCR assays targeting *P. vexans*, *C. fimbriata*, and *Trichoderma* (targeting species *T. asperellum* and *T. virens*) were performed using a Bio-Rad iCycler MyiQTM Real-Time Detection System (Bio-Rad Laboratories, Inc). The templates were genomic DNA extracted from the root samples collected at the end of the greenhouse trials. Sequence-selective primers developed in this study were designed using PRISE software [63]. The selective primers for *P. vexans* were VexansITSF31 (GCTGCTGGCGCTTGAT) and VexansITSR31 (TTCGTCCCCACAGTATACTT). The primers for *C. fimbriata* were CfimbITSF2 (TCTTCCTTGACAGAGATG) and CfimbITSR9 (TCACTGAGCCATCCAA). The primers for *Trichoderma* species were TricoITSF9 (TCCGAGCGTCATTTCAA) and TricoITSR3 (GTGCAAACTACTGCGC). The targets were fragments of the ITS rRNA gene with sizes of 131-bp, 181-bp, and 126-bp, respectively. The thermal cycling conditions were 94°C for 5 minutes; X cycles of 94°C for 20 seconds, Y°C for 30 seconds and 72°C for Z seconds; followed by 72°C for 10 minutes; where (X, Y, Z) = (44, 69.5, 40) for *P. vexans*, (38, 66.5, 30) for *C. fimbriata*, and (42, 65, 30) for *Trichoderma*. The amplification reactions were performed in iCycler iQ PCR Plates with Optical Flat 8-Cap Strips (Bio-Rad Laboratories, Inc.). PCR amplifications were performed in 25-µl reactions contained the following reagents: 50 mM Tris (pH 8.3), 500 µg/ml bovine serum albumin (BSA), 2.5 mM MgCl₂, 250 mM of each dNTP, 400 nM of each primer, 1-µl of template DNA (~176 ng), 2-µl of 10X SYBR Green I (Invitrogen, Carlsbad, CA) and 1.25 units *Taq* DNA polymerase. rRNA gene levels in root DNA were quantified by interpolation using a standard curve comprised of a dilution series of cloned rRNA genes.

Nucleotide Sequence Data

The nucleotide sequences of the following rRNA genes reported in this paper have been deposited in GenBank (JQ973613-JQ973615) and Sequence Read Archives (SRA049976.1).

Supporting Information

Table S1 Reverse PCR primers used in the Illumina-based high throughput sequence analysis of bacterial 16S rRNA genes. Each reverse PCR primer is comprised of the 4 adjoining segments in each row shown above. (DOCX)

Table S2 Forward PCR primer used in the Illumina-based high throughput sequence analysis of bacterial 16S rRNA genes. The forward PCR primer is comprised of the 3 adjoining segments shown above. (DOCX)

Table S3 Sequencing primers used in the Illumina-based high throughput sequence analysis of bacterial 16S rRNA genes. (DOCX)

References

- Koch LW (1955) The peach replant problem in Ontario: I. Symptomatology and distribution. *Can J Botany* 33: 450–460.
- Mai WF, Abawi GS (1981) Controlling replant diseases of pome and stone fruits in Northeastern United States by preplant fumigation. *Plant Dis* 65: 859–864.
- Utkhedde RS, Smith EM (2000) Impact of chemical, biological and cultural treatments on the growth and yield of apple in replant-disease soil. *Australas Plant Path* 29: 129–136.
- Koening SR, Overstreet C, Noling JW, Donald PA, Becker JO, et al. (1999) Survey of crop losses in response to phytoparasitic nematodes in the United States for 1994. *J Nematol* 31: 587–618.
- McKenry MV (1999) The replant problem and its management. Catalina Publishing, Fresno, CA.
- Gur A, Cohen Y (1989) The peach replant problem - some causal agents. *Soil Biol Biochem* 21: 829–834.
- Mizutani F, Hirota R, Kadoya K (1988) Growth inhibiting substances from peach roots and their possible involvement in peach replant problems. *Acta Horticulturac* 233: 37–43.
- Patrick ZA (1955) The peach replant problem in Ontario. II. Toxic substances from microbial decomposition products of peach root residues. *Can J Botany* 33: 461–486.
- Proebsting E, Gilmore A (1941) The relation of peach root toxicity to the re-establishing of peach orchards. *Proc Am Soc Hort Sci* 38: 21–26.
- Benizri E, Piutti S, Verger S, Page L, Vercambre G, et al. (2005) Replant diseases: bacterial community structure and diversity in peach rhizosphere as determined by metabolic and genetic fingerprinting. *Soil Biol Biochem* 37: 1738–1746.
- Gu YH, Mazzola M (2003) Modification of fluorescent pseudomonad community and control of apple replant disease induced in a wheat cultivar-specific manner. *Appl Soil Ecol* 24: 57–72.
- Hendrix FF, Powell WM (1970) Control of root pathogens in peach decline sites. *Phytopathology* 60: 16–19.
- Hendrix FF, Powell WH, Owen JH (1966) Relation of root necrosis caused by *Pythium* species to peach decline. *Phytopathology* 56: 1229–1232.
- Hine RB (1961) Role of fungi in peach replant problem. *Plant Dis Rep* 45: 462–465.
- Hoestra H (1965) *Thielaviopsis basicola*, a factor in the cherry replant problem in the Netherlands. *Eur J Plant Pathol* 71: 180–182.
- Kouyech H (1971) On the apoplexy of fruit trees caused by *Phytophthora* spp. *Ann Inst Phytopath Benaki* 10: 163.
- Manici LM, Caputo F (2010) Soil fungal communities as indicators for replanting new peach orchards in intensively cultivated areas. *Eur J Agron* 33: 188–196.
- Mazzola M (1998) Elucidation of the microbial complex having a causal role in the development of apple replant disease in Washington. *Phytopathology* 88: 930–938.
- Mazzola M (2007) Manipulation of rhizosphere bacterial communities to induce suppressive soils. *J Nematol* 39: 213–220.
- Mazzola M, Andrews PK, Reganold JP, Levesque CA (2002) Frequency, virulence, and metalaxyl sensitivity of *Pythium* spp. isolated from apple roots under conventional and organic production systems. *Plant Dis* 86: 669–675.
- Mazzola M, Gu YH (2000) Impact of wheat cultivation on microbial communities from replant soils and apple growth in greenhouse trials. *Phytopathology* 90: 114–119.
- Mircetich SM (1971) The role of *Pythium* in feeder roots of diseased and symptomless peach trees and in orchard soils in peach tree decline. *Phytopathology* 61: 357–360.
- Mircetich SM, Matheron ME (1976) *Phytophthora* root and crown rot of cherry trees. *Phytopathology* 66: 549–558.
- Mulder D (1969) The pathogenicity of several *Pythium* species to rootlets of apple seedlings. *Neth J Plant Pathol* 75: 178–181.
- Sewell GWF, Wilson JF (1975) The role of *Thielaviopsis basicola* in the specific replant disorders of cherry and plum. *Ann Appl Biol* 79: 149–169.
- Sitepu D, Wallace HR (1974) Diagnosis of retarded growth in an apple orchard. *Austral J Expt Agric and Animal Husb* 14: 577–584.
- Sutton T, Wayne D, Sullivan W, Nardacci J, Klimstra D (1981) Causes of apple tree death in Henderson county, North Carolina. *Plant Dis* 65: 330–331.
- Traquair J (1984) Etiology and control of orchard replant problems: a review. *Can J Plant Pathol* 6: 54–62.
- Wensley RN (1956) The peach replant problem in Ontario. IV. Fungi associated with replant failure and their importance in fumigated and nonfumigated soils. *Can J Botany* 34: 967–981.
- Yadava UL, Doud SL (1980) The short life and replant problems of deciduous fruit trees, p. 1–116, Horticultural Reviews. John Wiley & Sons, Inc.
- McKenry MV, Buzo T (2009) Evaluation of “starve and switch” approach to replanting trees. *Annu Int Res Conf Methyl Bromide Altern Emiss Reduct*, San Diego, CA, Abstract 48. Website for 2012 Annual International Research Conference on Methyl Bromide Alternatives and Emissions Reductions. Available: <http://mbao.org>. Accessed 2012, September 12.
- Waschkies C, Schropp A, Marschner H (1994) Relations between grapevine replant disease and root colonization of grapevine (*Vitis* sp.) by fluorescent pseudomonads and endomycorrhizal fungi. *Plant Soil* 162: 219–227.
- Blumer C, Haas D (2000) Mechanism, regulation and ecological role of bacterial cyanide biosynthesis. *Achievements Microbiol* 173: 170–177.
- Pal KK, Tilak KV, Saxena AK, Dey R, Singh CS (2000) Antifungal characteristics of a fluorescent *Pseudomonas* strain involved in the biological control of *Rhizoctonia solani*. *Microbiol Res* 155: 233–243.
- Rumberger A, Merwin IA, Thies JE (2007) Microbial community development in the rhizosphere of apple trees at a replant disease site. *Soil Biol Biochem* 39: 1645–1654.
- Otto G, Winkler H (1977) Investigations about cause of specific replant disease of fruit trees. VI. Proof of actinomycetes in feeder roots of apple seedlings in soils with different degrees of soil sickness. *Zentralbl Bakteriol Parasitenkd Infektionskr Hyg* 132: 593–606.
- Szabo K, Winkler H, Petzold H, Marwitz R (1998) Evidence for the pathogenicity of actinomycetes in rootlets of apple seedlings from soils conducive to specific apple replant disease. *Acta hort* 477: 53–65.
- Leyns F, De Cleene M, Swings JG, De Ley J (1984) The host range of the genus *Xanthomonas*. *Bot Rev* 50: 308–356.
- Bent E, Loffredo A, Yang J, McKenry MV, Becker JO, et al. (2009) Investigations into peach seedling stunting caused by a replant soil. *FEMS Microbiol Ecol* 68: 192–200.
- Cantrell HF, Dowler WM (1971) Effects of temperature and pH on growth and composition of *Pythium irregulare* and *Pythium vexans*. *Mycologia* 63: 31–37.
- Gardner DE, Hendrix FF (1973) Carbon dioxide and oxygen concentrations in relation to survival and saprophytic growth of *Pythium irregulare* and *Pythium vexans* in soil. *Can J Bot* 51: 1593–1598.
- Biesbrock JA, Hendrix FF (1970) Influence of soil water and temperature on root necrosis of peach caused by *Pythium* spp. *Phytopathology* 60: 880–882.
- Huet JC, Le Caer JP, Nespoulous C, Pernellet JC (1995) The relationships between the toxicity and the primary and secondary structures of elicitor-like protein elicitors secreted by the phytopathogenic fungus *Pythium vexans*. *Mol Plant Microbe Interact* 8: 302–310.
- DeVay JE, Lukezic FL, English WH, Moller WJ, Parkinson BW (1965) Controlling: Ceratocystis canker of stone fruit trees. *California Agriculture* 19: 2–4.
- Marin M, Castro B, Gaitan A, Preisig O, Wingfield BD, et al. (2003) Relationships of *Ceratocystis fimbriata* isolates from Colombian coffee-growing regions based on molecular data and pathogenicity. *J Phytopathol* 151: 395–405.
- Roux J, Wingfield MJ, Bouillet JP, Wingfield BD, Alfenas AC (2000) A serious new wilt disease of Eucalyptus caused by *Ceratocystis fimbriata* in Central Africa. *Forest Pathology* 30: 175–184.
- Van Wyk M, Wingfield BD, Marin M, Wingfield MJ. (2010) New *Ceratocystis* species infecting coffee, cacao, citrus and native trees in Colombia. *Fungal Diversity* 40: 103–117.
- Lewthwaite SL, Wright PJ, Triggs CM (2011) Sweetpotato cultivar susceptibility to infection by *Ceratocystis fimbriata*. *New Zealand Plant Protection* 64: 1–6.
- Harman GE, Howell CR, Viterbo A, Chet I, Lorito M (2004) *Trichoderma* species - opportunistic, avirulent plant symbionts. *Nat Rev Micro* 2: 43–56.
- Vinale F, Sivasithamparan K, Ghisalberti EL, Marra R, Woo SL, et al. (2008) *Trichoderma*-plant-pathogen interactions. *Soil Biol Biochem* 40: 1–10.
- Howell CR (2006) Understanding the mechanisms employed by *Trichoderma virens* to effect biological control of cotton diseases. *Phytopathology* 96: 178–180.
- Yedida I, Shorest M, Karem Z, Benhamou N, Kapulnik Y, et al. (2003) Concomitant induction of systemic resistance to *Pseudomonas syringae* pv. *lacyrmanis* in cucumber by *Trichoderma asperellum* (T-203) and accumulation of phytoalexins. *Appl Environ Microbiol* 69: 7343–7353.

Acknowledgments

The authors thank John Darsow for his technical assistance, and the Duarte Nursery (Hughson, CA) for their generous donation of the peach seedlings.

Author Contributions

Conceived and designed the experiments: JY MVM JOB JB. Performed the experiments: JY. Analyzed the data: JY PMR JOB JB. Wrote the paper: JY PMR MVM JOB JB.

53. Yedidia I, Benhamou N, Chet I (1999) Induction of defense response in cucumber plants (*Cucumis sativus* L.) by the biocontrol agent *Trichoderma harzianum*. *Appl Environ Microbiol* 65: 1061–1070.
54. Tondje PR, Roberts DP, Bon MC, Widmer T, Samuels GJ, et al. (2007) Isolation and identification of mycoparasitic isolates of *Trichoderma asperellum* with potential for suppression of black pod disease of cacao in Cameroon. *Biol Control* 43: 202–212.
55. Cotxarrera L, Trillas-Gay MI, Steinberg C, Alabouvette C (2002) Use of sewage sludge compost and *Trichoderma asperellum* isolates to suppress *Fusarium* wilt of tomato. *Soil Biol Biochem* 34: 467–476.
56. Trillas MI, Casanova E, Cotxarrera L, Ordovás J, Borrero C, et al. (2006) Composts from agricultural waste and the *Trichoderma asperellum* strain T-34 suppress *Rhizoctonia solani* in cucumber seedlings. *Biol Control* 39: 32–38.
57. Sharon E, Chet I, Viterbo A, Bar-Eyal M, Nagan H, et al. (2007) Parasitism of *Trichoderma* on *Meloidogyne javanica* and role of the gelatinous matrix. *Eur J Plant Pathol* 118: 247–258.
58. Caporaso JG, Lauber CL, Walters WA, Berg-Lyons D, Lozupone CA, et al. (2011) Global patterns of 16S rRNA diversity at a depth of millions of sequences per sample. *Proc Nat Acad Sci* 108: 4516–4522.
59. Caporaso JG, Kuczynski J, Stombaugh J, Bittinger K, Bushman FD, et al. (2010) QIIME allows analysis of high-throughput community sequencing data. *Nat Meth* 7: 335–336.
60. Borneman J, Hartin RJ (2000) PCR primers that amplify fungal rRNA genes from environmental samples. *Appl Environ Microbiol* 66: 4356–4360.
61. Gardes M, Bruns TD (1993) ITS primers with enhanced specificity for basidiomycetes - application to the identification of mycorrhizae and rusts. *Mol Ecol* 2: 113–118.
62. White TJ, Bruns TD, Lee SB, Taylor JW (1990) Amplification and direct sequencing of fungal ribosomal RNA genes for phylogenetics. In: Innis MA, Sninsky JJ, White TJ, editors. *PCR Protocols - A Guide to Methods and Applications*. San Diego CA: Academic Press. pp. 315–32.
63. Fu Q, Ruedger P, Bent E, Chrobak M, Borneman J (2008) PRISE (PRImer SElector): Software for designing sequence-selective PCR primers. *J Microbiol Methods* 72: 263–267.
64. Altschul SF, Madden TL, Schäffer AA, Zhang J, Zhang Z, et al. (1997) Gapped BLAST and PSI-BLAST: a new generation of protein database search programs. *Nucleic Acids Res* 25: 3389–3402.