

RESEARCH PAPER

Transcripts of sulphur metabolic genes are co-ordinately regulated in developing seeds of common bean lacking phaseolin and major lectins

Dengqun Liao¹, Agnieszka Pajak¹, Steven R. Karcz², B. Patrick Chapman¹, Andrew G. Sharpe³, Ryan S. Austin¹, Raju Datla³, Sangeeta Dhaubhadel^{1,4} and Frédéric Marsolais^{1,4,*}

¹ Agriculture and Agri-Food Canada, Genomics and Biotechnology, Southern Crop Protection and Food Research Centre, 1391 Sandford St., London, Ontario N5V 4T3, Canada

² Agriculture and Agri-Food Canada, Bioproducts and Bioprocesses, Saskatoon Research Centre, 107 Science Place, Saskatoon, Saskatchewan S7N 0X2, Canada

³ National Research Council Canada, Plant Biotechnology Institute, 110 Gymnasium Place, Saskatoon, Saskatchewan S7N 0W9, Canada

⁴ Department of Biology, University of Western Ontario, London, Ontario N6A 5B7, Canada

* To whom correspondence should be addressed. E-mail: Frederic.Marsolais@agr.gc.ca

Received 6 June 2012; Revised 17 August 2012; Accepted 12 September 2012

Abstract

The lack of phaseolin and phytohaemagglutinin in common bean (dry bean, *Phaseolus vulgaris*) is associated with an increase in total cysteine and methionine concentrations by 70% and 10%, respectively, mainly at the expense of an abundant non-protein amino acid, S-methyl-cysteine. Transcripts were profiled between two genetically related lines differing for this trait at four stages of seed development using a high density microarray designed for common bean. Transcripts of multiple sulphur-rich proteins were elevated, several previously identified by proteomics, including legumin, basic 7S globulin, albumin-2, defensin, albumin-1, the Bowman–Birk type proteinase inhibitor, the double-headed trypsin inhibitor, and the Kunitz trypsin inhibitor. A co-ordinated regulation of transcripts coding for sulphate transporters, sulphate assimilatory enzymes, serine acetyltransferases, cystathionine β -lyase, homocysteine S-methyltransferase and methionine gamma-lyase was associated with changes in cysteine and methionine concentrations. Differential gene expression of sulphur-rich proteins preceded that of sulphur metabolic enzymes, suggesting a regulation by demand from the protein sink. Up-regulation of *SERAT1;1* and *-1;2* expression revealed an activation of cytosolic O-acetylserine biosynthesis. Down-regulation of *SERAT2;1* suggested that cysteine and S-methyl-cysteine biosynthesis may be spatially separated in different subcellular compartments. Analysis of free amino acid profiles indicated that enhanced cysteine biosynthesis was correlated with a depletion of O-acetylserine. These results contribute to our understanding of the regulation of sulphur metabolism in developing seed in response to a change in the composition of endogenous proteins.

Key words: Common bean, cysteine, methionine, seed proteins, sulphur metabolism, transcript profiling.

Abbreviations: Alb, albumin; AI, amylase inhibitor; AIL, amylase inhibitor-like; ANOVA, analysis of variance; Arc, arcelin; aRNA, amplified RNA; ATPS, sulphate adenylyltransferase; APSR, adenylyl sulphate reductase; BCAT, branched chain amino acid aminotransferase; CBL, cystathionine β -lyase; CGS, cystathionine γ -synthase; EST, expressed sequence tag; HMT, homocysteine S-methyltransferase; Lec, lectin; MGL, Met γ -lyase; OASS, O-acetylserine sulphhydrylase; Pha, phytohaemagglutinin; Pha-L, leucoagglutinating phytohaemagglutinin; Phs, phaseolin; SBP, selenium binding protein; SERAT, Ser acetyltransferase; SIR, sulphite reductase; Sultr, sulphate transporter; TAT, Tyr aminotransferase.

© 2012 The Authors.

This is an Open Access article distributed under the terms of the Creative Commons Attribution Non-Commercial License (<http://creativecommons.org/licenses/by-nc/2.0/uk/>) which permits unrestricted non-commercial use, distribution, and reproduction in any medium, provided the original work is properly cited.

Introduction

Protein quality in legume crops is limited by the sub-optimal levels of the essential sulphur amino acids, Met and Cys. Among legumes grown for consumption of the whole grain as food, common bean (dry bean, *Phaseolus vulgaris*) is the most important worldwide (Broughton *et al.*, 2003). A unique feature of *Phaseolus* and several *Vigna* species is the accumulation of a non-protein amino acid, *S*-methyl-Cys, to a high concentration in seed, of up to 0.3% per dry weight, mainly as a γ -Glu dipeptide (Giada *et al.*, 1998). *S*-Methyl-Cys cannot substitute for Met or Cys in the diet (Padovese *et al.*, 2001). Major seed proteins in common bean, the 7S globulin phaseolin and lectin phytohaemagglutinin, are poor in Met and Cys. In a set of genetically related lines, the absence of phaseolin and major lectins resulted in a shift of sulphur from *S*-methyl-Cys to the sulphur amino acid pool in protein (Taylor *et al.*, 2008). The concentration of sulphur amino acids in seed was elevated by 70% for Cys and 10% for Met, to levels of 27 mg g⁻¹ protein, compared with FAO requirement scoring patterns of 22–28 mg g⁻¹ protein, depending on age group (WHO, 2007). Proteomic analysis identified several sulphur-rich proteins whose levels are elevated in the absence of phaseolin and major lectins, including the 11S globulin legumin, albumin-2, defensin, albumin-1, and the Bowman–Birk type proteinase inhibitor (Marsolais *et al.*, 2010). Under these conditions, legumin becomes the dominant storage protein, accounting for at least 17% of total protein. Integration of proteomic and functional genomic data enabled the identification and isolation of cDNAs encoding these proteins (Yin *et al.*, 2011). These characteristics are reminiscent of the *opaque-2* mutant, which was used to develop Quality Protein Maize (Huang *et al.*, 2009).

To date, most approaches to improve protein quality in grain legumes have involved the transgenic expression of sulphur-rich proteins, sometime in combination with metabolic engineering of sulphur amino acid pathways. Expression of the foreign protein is often limited by the supply of sulphur and can result in decreased expression of endogenous sulphur-rich proteins (Streit *et al.*, 2001; Tabe and Droux, 2002). In soybean, transgenic expression of Brazil nut 2S albumin increased Met concentration by 26% (Townsend and Thomas, 1994), while expression of 15 kDa δ -zein increased Met and Cys concentrations by 20% and 35%, respectively (Dinkins *et al.*, 2001). With 11 kDa δ -zein, the Met concentration was increased in the alcohol-soluble protein fraction, but not overall in the seed (Kim and Krishnan, 2004). In common bean, the expression of Brazil nut 2S albumin increased the Met concentration by 20% (Aragao *et al.*, 1999). In lupin and chickpea, expression of sunflower seed albumin stimulated sulphur assimilation. Sulphur was shifted from the sulphate to the protein Met pool, elevated by 90%, while the concentration of Cys was reduced by 10% (Molvig *et al.*, 1997; Tabe and Droux, 2001; Chiaiese *et al.*, 2004). In *Vicia narbonensis*, which accumulates little sulphate in mature seed, co-expression of Brazil nut 2S albumin with a feedback-insensitive, bacterial Asp kinase increased Met and Cys concentrations by 100% and 20%, respectively (Demidov *et al.*, 2003). The increased levels of Met and Cys were accompanied by decreases in the concentration of γ -Glu-*S*-ethenyl-Cys (2-fold) and free thiols, particularly γ -Glu-Cys and glutathione. About two-thirds of the increase in Met

and Cys concentration was attributed to an enhanced supply of sulphur to the seed. However, the potential allergenicity of Brazil nut 2S and sunflower seed albumins limits their practical usefulness for crop improvement (Nordlee *et al.*, 1996; Kelly and Hefle, 2000).

Although the seed is a major target for the biotechnological improvement of total Met and Cys levels, there is a relative lack of information on the regulation of sulphur amino acid metabolism in this tissue. Some specific features are related to sulphur nutrition and assimilation. In soybean, sulphate in pods is transformed into homogluthathione, which is mobilized into developing seed (Anderson and Fitzgerald, 2001). While homogluthathione contributes Cys, *S*-methyl-Met is anticipated to be a major form of Met transported to the seed (Bourgis *et al.*, 1999; Lee *et al.*, 2008; Tan *et al.*, 2010). Assimilation of transported *S*-methyl-Met requires homocysteine as an acceptor of the *S*-methyl group. Under sulphur-sufficient conditions, soybean seeds do accumulate detectable levels of sulphate throughout development (Naeve and Shibles, 2005). Recent functional genomic studies have highlighted the occurrence of complete pathways of sulphate assimilation and *de novo* Cys and Met biosynthesis in developing seed, both in soybean and common bean (Yi *et al.*, 2010; Yin *et al.*, 2011). Considering the roles of homogluthathione and *S*-methyl-Met as organic sulphur transport forms, the contribution of sulphate assimilation and *de novo* Cys and Met biosynthesis remains to be fully elucidated.

Recently, seed-specific transgenic expression of a chloroplastic, feedback-insensitive Ser acetyltransferase (SERAT) in lupin increased the concentration of *O*-acetylserine and free Cys (Tabe *et al.*, 2010). Despite this, the total concentration of Cys and Met remained unaltered, even after co-segregation of the sunflower seed albumin transgene. This was interpreted as further evidence that sulphate assimilation and Cys biosynthesis are regulated independently from Met biosynthesis, which is part of the Asp-derived amino acid pathway (Galili *et al.*, 2005). Constitutive over-expression of a cytosolic form of *O*-acetylserine sulphhydrylase (OASS) in transgenic soybean led to sustained enzymatic activity at the late stages of seed development and resulted in a 70% increase in total Cys concentration in mature seed (Kim *et al.*, 2012). This was associated with enhanced levels of the endogenous Cys-rich protein, the Bowman–Birk protease inhibitor.

Genetically related lines of common bean which integrate a deficiency in phaseolin and phytohaemagglutinin constitute a unique system to investigate the regulation of sulphur amino acid metabolism in seed, since perturbations are the result of changes in the levels of endogenous proteins, arising from natural genetic variation. Osborn *et al.* (2003) described their generation. SARC1 contains arcelin-1 introduced from a wild accession into the navy bean cultivar Sanilac. SMARC1N-PN1 lacks phaseolin and major lectins through the introgression of recessive null alleles from a *Phaseolus coccineus* accession and ‘Great Northern 1140’, respectively. SARC1 and SMARC1N-PN1 share a similar level of the parental, Sanilac background (*ca.* 85%). In the present study, global analysis of transcripts and free amino acids was performed between the two genotypes at four

stages spanning the developmental period of γ -Glu-S-methyl-Cys accumulation in seed (Yin *et al.*, 2011).

Materials and methods

Plant materials

Plants of common bean (dry bean, *Phaseolus vulgaris*) lines SARC1 and SMARC1N-PN1 (Osborn *et al.*, 2003) were grown in the field in London, Ontario, Canada, in 2009. Developing seeds were harvested at four developmental stages, designated after Walbot *et al.* (1972): stage IV, cotyledon (average seed weight of 25 mg); stage V, cotyledon (50 mg); stage VI, maturation (150 mg); and stage VIII, maturation (380 mg). They were immediately frozen in liquid nitrogen and stored at -80°C .

RNA extraction

Replicate samples consisted of 10–30 seeds pooled randomly from different plants. Four independent extractions were performed for each genotype and developmental stage, for a total of 32 samples. Seeds were ground in liquid nitrogen. Total RNA was extracted from 0.5–1 g of tissue using a modified lithium chloride precipitation method as described by Bruneau *et al.* (2006). RNA was quantified by spectrophotometry with a NanoDrop 1000 (Thermo Scientific, Wilmington, Delaware, United States) and its quality evaluated from $A_{260/280}$ ratio and agarose gel electrophoresis.

Assembly of expressed sequence tags and design of CustomArray 90K array

Common bean expressed sequence tags (ESTs) from BAT93 seed (Yin *et al.*, 2011) were pooled with other common bean ESTs from GenBank dbEST (as of 1 August 2009) to generate a starting dataset of 111 255 sequences. This dataset was processed using SEQCLEAN in order (i) to remove sequences shorter than 100 bp; (ii) to remove low-complexity and low-quality sequences; (iii) to trim poly A/T and undetermined bases (N); (iv) to use the National Center for Biotechnology Information UniVec collection for end-trimming of vector sequences and removal if necessary; and (v) to remove sequences matching the *Escherichia coli* genome, and ribosomal RNA small and large subunits at the level of 96% identity. The SEQCLEAN procedure resulted in the removal of 3427 sequences and the trimming of an additional 29 445 sequences leaving 107 828 sequences available for assembly. The SEQCLEAN program is part of the PASA pipeline (Haas *et al.*, 2003). The cleaned EST dataset was then clustered and assembled using TGICL (Pertea *et al.*, 2003) using default parameters except for specifying 96% identity for CAP3 contig assembly. A few sequences coding for arcelin or leucoagglutinating phytohaemagglutinin were added from GenBank. However, among differentially expressed lectins that were previously identified by proteomics (Marsolais *et al.*, 2010), mannose lectin FRIL was omitted. The assembly contained 18 742 contigs or singletons. The assembly was annotated by BlastX to the UniProt database, Viridiplantae taxonomy, by identifying the best hit with an informative annotation having an *e*-value smaller than or equal to 1×10^{-5} . This assembly was used to design probes on a CustomArray 90K array (Mukilteo, Washington, United States). A total of 18 415 unigenes were represented on the array. Most of these were represented by five 35–40-mer probes (16 510), with the remainder represented by four (480), three (470), two (522), or one probe (431). For contigs or singletons with two probes, these probes were placed in duplicate on the array. For those with one probe, five replicates were placed on the array. A total of 1597 were duplicate probes corresponding to two or more contigs or singletons. Two ubiquitin contigs were present to use as control, with 30 replicates of their five individual probes (CL1Contig148 and CL1Contig270). Arrays were manufactured using a CustomArray B3 Synthesizer at the Plant Biotechnology Institute in Saskatoon, Saskatchewan, Canada.

Microarray hybridization and data acquisition

Amplified RNA (aRNA) was synthesized from 1 μg of total RNA treated with amplification-grade DNase I (Life Technologies, Burlington, Ontario, Canada) using RNA ampULSe: Amplification and Labeling Kit (Kreatech Diagnostics, Durham, North Carolina, United States) according to the manufacturer's instructions. Four μg of purified aRNA was labelled with Cy5 and hybridized to the arrays according to CustomArray protocols. The images were scanned with a GenePix 4000B scanner (Molecular Devices, Sunnyvale, California, United States) at values of 5 μm resolution, a focal depth of 150 μm , 100% laser power, and photomultiplier gain of 400. Data were extracted using GenePix Pro 6.1.0.4. One slide from stages VI and VIII were discarded due to uneven hybridization, leaving three biological replicates for stages VI and VIII, as compared with four at stages IV and V, for a total of 28 samples. Scanned data were adjusted with local background median values and filtered to remove poor or 'absent' probes with median signals smaller than the negative control median values plus twice the standard deviation (Polesani *et al.*, 2010). Probes passing this filtering for at least 6 of the 28 samples were included in the normalization and further analysis.

Microarray data analysis

Probe intensities were adjusted with local background subtraction, \log_2 transformed, and then quantile normalization was applied at the probe level with GeneSpring GX v. 11.5 (Agilent Technologies, Mississauga, Ontario, Canada). The final expression value of a given transcript on each array was determined by averaging probe intensities after Tukey's median polish, which was performed with the R statistical software, and applying baseline transformation. The list of genes, differentially expressed between SARC1 and SMARC1N-PN1 at each developmental stage, was obtained using the cutoffs of 1.4-fold and analysis of variance (ANOVA) with corrected *P* values smaller than 0.05, which was computed via asymptotic distribution and Benjamini–Hochberg false discovery rate multiple testing correction. Analysis of metabolic pathway genes was aided by consulting the Plant Metabolic Network (PMN) database (Zhang *et al.*, 2010).

Reverse transcription-quantitative PCR

Four μg of DNase I-treated RNA was reverse transcribed with 50 μM of Oligo(dT)₂₀ primers using ThermoScript™ reverse transcriptase following the manufacturer's instructions (Life Technologies). Quantitative PCR was performed using a CFX96 Real-Time PCR Detection System (Bio-Rad Laboratories, Mississauga, Ontario, Canada). Reactions contained primers at a concentration of 0.5 μM (see Supplementary Table S1 at JXB online). They were carried out in Hard-Shell 96-well PCR plates (Bio-Rad Laboratories) in a final volume of 10 μl . The reaction contained 5 μl of 2 \times SsoFast EvaGreen Supermix (Bio-Rad Laboratories) and 2 μl of a 32-fold dilution of the cDNA. The PCR program consisted of an initial step of 3 min at 95 $^{\circ}\text{C}$ followed by 40 cycles of 10 s at 95 $^{\circ}\text{C}$ and 30 s at 59 $^{\circ}\text{C}$. Data were analysed using CFX Manager 2.0. Data were expressed as the cycle number necessary to reach a threshold fluorescence value (C_q). The reported values are the means of three biological replicates consisting of independent RNA extracts, with each biological replicate the average of three technical replicates. Data were normalized to the mean C_q of the ubiquitin reference gene (CL1Contig148), for which the variation between genotypes and developmental stages was smaller than or equal to 0.6. The specificity of primer pairs was confirmed by melt curve analysis in comparison with controls without template and by agarose gel electrophoresis of PCR products. PCR efficiency of ubiquitin was calculated from a standard curve of C_q versus the logarithm of starting template quantity. Efficiency was 92%, with a coefficient of determination (R^2) of 0.99.

Extraction and quantification of free amino acids

Amino acids were extracted in triplicate and quantified by HPLC after derivatization with phenylisothiocyanate as previously described (Yin

et al., 2011). Cysteine was determined separately as cysteic acid, after performic acid oxidation.

Accession number

Expression data were deposited at the Gene Expression Omnibus of the National Center for Biotechnology Information with accession number [GEO: GSE34233].

Results

The four developmental stages selected for microarray analysis span the entire period of γ -Glu-S-methyl-Cys accumulation in seed (Yin et al., 2011). During seed development, phaseolin and phytohaemagglutinin transcripts are most abundant between stages IV to VI, while phaseolin as a protein accumulates between stages V to VII (Bobb et al., 1995). Seed desiccation takes place during stage VIII. Hierarchical clustering of expression values for major seed protein transcripts that were differentially expressed between SARC1 and SMARC1N-PN1 throughout all four developmental stages were consistent with previous proteomic findings (Fig. 1) (Marsolais et al., 2010). Lower expression values were systematically observed for phaseolin, arcelin, lectin, and most phytohaemagglutinin contigs in

SMARC1N-PN1. Low values measured for arcelin may be due to cross-hybridization with related, residual lectin sequences (Marsolais et al., 2010). Similarly, a residual phaseolin isoform was previously shown to be expressed at low levels in SMARC1N-PN1. α -Amylase inhibitor-1, α -amylase inhibitor like protein, leucoagglutinating phytohaemagglutinin (PHA-L), and albumin-1 contigs had higher expression values, consistent with the fact that the corresponding proteins were previously shown to compensate, in part, for the absence of phaseolin and major lectins in SMARC1N-PN1.

Differential expression of transcripts coding for sulphur-rich proteins

The microarray data were examined for differential expression of transcripts coding for sulphur-rich proteins (Table 1). To identify corresponding genes, contig sequences were searched by BlastX against the proteome predicted from the early release genome of the common bean (*Phaseolus vulgaris* v1.0, DOE-JGI and USDA-NIFA, http://www.phytozome.net/commonbean_er). Sulphur-rich proteins previously identified by proteomics as elevated in SMARC1N-PN1 also had increased transcript levels. They include legumin, albumin-2, defensin D1, albumin-1A and -B, and the Bowman-Birk type proteinase inhibitor. The

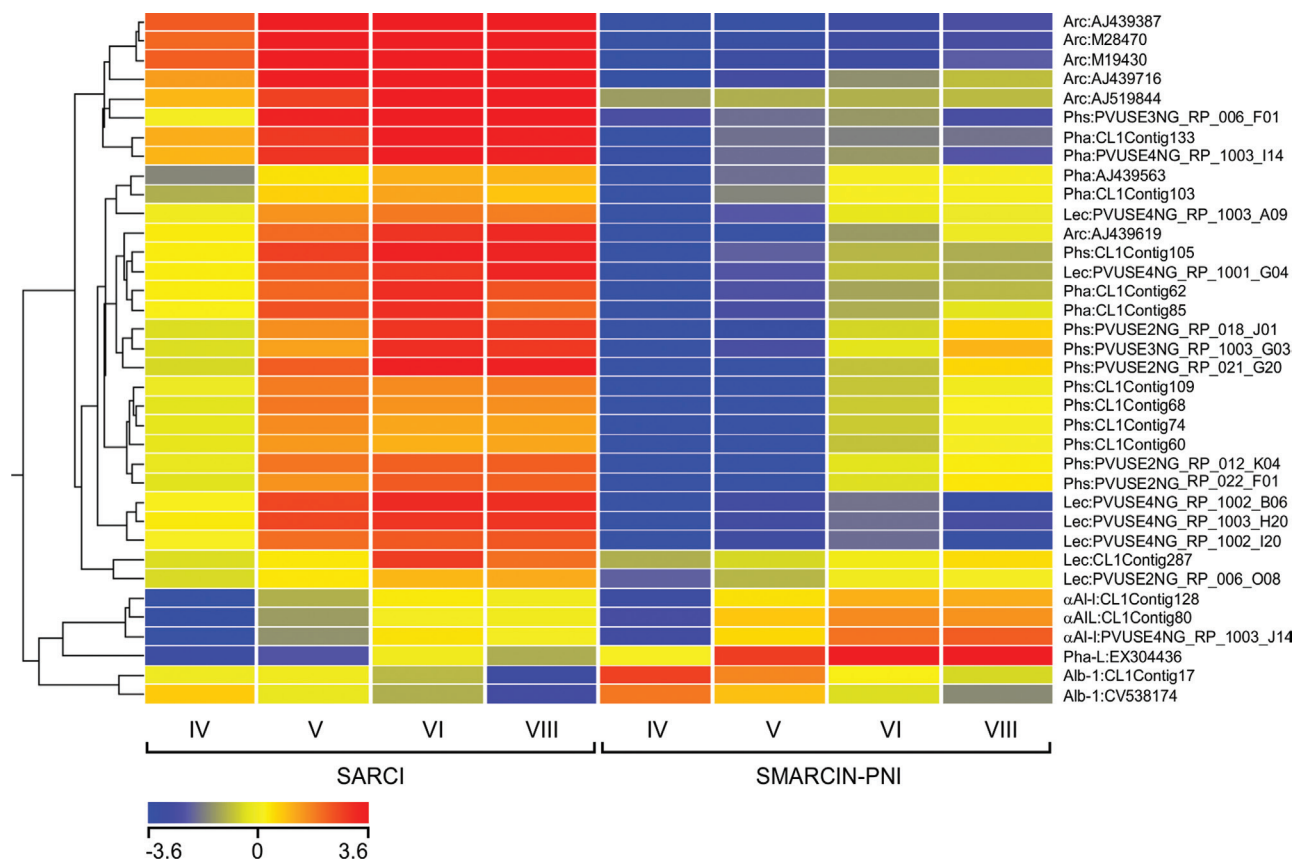


Fig. 1. Cluster analysis of seed storage protein genes differentially expressed between SMARC1N-PN1 and SARC1 at all four developmental stages, using a threshold value of 1.4-fold and a corrected P value smaller than 0.05. Expression values measured by microarray analysis were used for hierarchical clustering. Values are the means of four biological replicates at stages IV and V, and three biological replicates at stages VI and VIII. Abbreviations are as follows: Arc, arcelin; Phs, phaseolin; Pha, phytohaemagglutinin; Lec, lectin; AI, amylase inhibitor; AIL, amylase inhibitor-like; Pha-L, leucoagglutinating phytohaemagglutinin, Alb, albumin.

Table 1. Fold change of transcripts coding for sulphur-rich proteins in SMARC1N-PN1 as compared with SARC1. A negative value refers to a reduced expression in SMARC1N-PN1 by the corresponding fold change. Values statistically significant at $P \leq 0.05$ are highlighted in bold. Contigs with evidence for differential expression at the protein level are highlighted with an asterisk (Marsolais *et al.*, 2010; Yin *et al.*, 2011). Protein accession was identified by BlastX of early release of the *Phaseolus vulgaris* genome (*Phaseolus vulgaris* v1.0, DOE-JGI and USDA-NIFA, http://www.phytozome.net/commonbean_er).

Annotation	Contig/singleton	Protein	Identity (%)	Developmental stage			
				IV	V	VI	VIII
Legumin	CL647Contig1*	Phvul.007G192800.1	98	1.46	2.33	1.35	1.70
Basic 7S globulin-2	CL10519Contig1	Phvul.006G093600.1	100	1.17	2.20	1.80	2.25
	CL671Contig1	Phvul.006G093600.1	100	1.11	2.49	2.15	2.02
Albumin-2	CL46Contig1*	Phvul.007G275800.1	100	2.60	2.46	1.23	1.28
	CL46Contig3	Phvul.007G276200.1	100	1.10	1.17	1.00	2.44
	CL46Contig7	Phvul.007G276200.1	88	1.08	1.22	-1.09	2.27
	CV533282	Phvul.007G276200.1	91	-1.14	-1.11	-1.66	2.89
	FG231390	Phvul.007G276100.1/-2	91	1.22	1.37	1.12	2.68
Defensin D1	CL586Contig1*	Phvul.005G071300.1	99	1.17	1.43	3.86	1.03
γ -Thionin	CL1108Contig1	Phvul.009G158000.1	100	1.38	2.03	3.15	1.68
Albumin-1A	CL1Contig108*	Phvul.011G205400.1/-300.1	97	1.44	1.38	1.40	9.77
Albumin-1A	PVUSE3NG_T3_011_O21	Phvul.011G205400.1/-300.1	96	1.07	1.06	1.08	4.00
Albumin-1A	CL1Contig69	Phvul.011G205400.1/-300.1	90	1.19	1.32	1.25	5.58
Albumin-1B	CL1Contig83*	Phvul.011G205400.1/-300.1	98	1.33	1.09	1.13	4.77
Albumin-1B	CL1Contig10*	Phvul.011G205400.1/-300.1	94	1.39	-1.01	1.00	4.66
Albumin-1B	CL1Contig64	Phvul.011G205400.1/-300.1	92	1.70	1.30	1.64	6.85
Albumin-1C	CL1Contig43	Phvul.011G204600.1	93	1.84	1.89	1.38	2.04
Albumin-1C	CV539755	Phvul.011G204600.1	91	2.48	1.35	1.35	1.35
Albumin-1C	CV538174	Phvul.011G204600.1	88	2.27	2.15	1.58	2.30
Albumin-1C	CV540424	Phvul.011G204700.1	88	3.00	2.50	1.50	1.42
Albumin-1D	CL1Contig82	Phvul.011G205500.1	99	1.87	1.20	1.38	8.38
Albumin-1D	CL1Contig87	Phvul.011G205500.1	99	1.46	1.12	1.00	5.55
Albumin-1D	PVUSE4NG_RP_1004_F21	Phvul.011G205500.1	95	1.28	1.03	-1.01	3.10
Albumin-1D	PVUSE2NG_RP_027_K19	Phvul.011G205500.1	93	1.34	1.10	1.05	6.29
Albumin-1E	CL1Contig17	Phvul.011G204700.1	99	7.17	3.39	2.37	5.62
Albumin-1E	CL1Contig141	Phvul.011G205200.1	100	1.37	2.33	1.14	1.37
Albumin-1F	CL1Contig110	Phvul.011G205600.1	100	1.67	1.07	1.70	10.21
Albumin-1F	PVUSE2NG_RP_018_O15	Phvul.011G205500.1	95	1.30	1.64	2.54	10.88
Albumin-1F	PVUSE3NG_RP_014_O07	Phvul.011G205400.1/-300.1	94	1.21	1.02	1.25	4.64
Albumin-1G	PVUSE4NG_RP_1003_G20	Phvul.011G205500.1	100	1.72	1.18	1.37	5.64
Albumin-1G	CL1Contig42	Phvul.011G204400.1	98	2.18	1.61	-1.20	1.98
Bowman-Birk type proteinase inhibitor 2	CL1Contig140*	Phvul.004G133900.1	100	3.80	3.58	-1.03	1.30
Bowman-Birk type proteinase inhibitor 2	PVUSE4NG_RP_1003_O21	Phvul.004G133900.1	100	4.28	3.58	1.04	1.30
Double-headed trypsin inhibitor	CL10Contig1	Phvul.004G134100.1	95	3.19	1.71	-1.03	1.09
Trypsin/chymotrypsin inhibitor	CL10Contig2	Phvul.004G134000.1	95	3.21	1.78	1.03	1.04
Trypsin/chymotrypsin inhibitor	PVUSE3NG_RP_1003_M20	Phvul.004G134000.1	89	3.19	2.36	1.01	1.53
Kunitz trypsin protease inhibitor	CL3713Contig1	Phvul.004G129900.1	88	-1.25	-1.19	2.06	3.00
Trypsin inhibitor	PVUSE2NG_RP_008_J18	Phvul.004G129900.1	81	-1.31	-1.23	3.05	3.48

corresponding contigs were identified by comparison with tryptic peptide sequences determined either *de novo* with PEAKS or through MASCOT searches (Marsolais *et al.*, 2010; Yin *et al.*, 2011). Transcripts of additional types of sulphur-rich proteins were identified as differentially expressed, including the basic 7S globulin, double-headed trypsin, and Kunitz trypsin protease inhibitors. Soybean basic 7S globulin, known as γ -conglutin in lupin, is a minor Cys-rich globulin with structural similarity to xyloglucan-specific endo- β -1,4-glucanase inhibitor-like protein (Scarafoni *et al.*, 2010; Yoshizawa *et al.*, 2011), which

has insulin-binding properties and glucose-lowering nutritional effects (Hanada and Hirano, 2004; Magni *et al.*, 2004; Lovati *et al.*, 2012). The predicted amino acid sequence of the basic 7S globulin-2 from common bean has 3% of its residues as Cys and 1.9% as Met; 13.3% as Cys and 2.5% as Met for the double-headed trypsin inhibitor; and 2.3% as Cys and 0.9% as Met for the Kunitz trypsin protease inhibitor. For some types of sulphur-rich protein already known from proteomics, novel contig sequences were identified as differentially expressed. There were five albumin-2 contigs matching three different genes located at

Table 2. Fold change of transcripts coding for enzymes involved in the formation of protein disulphide bridges in SMARC1N-PN1 compared with SARC1. A negative value refers to a reduced expression in SMARC1N-PN1 by the corresponding fold change. Values significant at $P \leq 0.05$ are highlighted in bold. Protein accession was identified by BlastX of the early release of the *Phaseolus vulgaris* genome.

Annotation	Contig/singleton	Protein	Developmental stage			
			IV	V	VI	VIII
γ -Interferon-inducible lysosomal thiol reductase	CL1852Contig1	Phvul.006G072600.1	1.06	1.25	2.12	2.20
	CL1852Contig2	Phvul.006G072600.1	1.15	1.31	2.08	1.90
Protein disulphide isomerase	CL1Contig224	Phvul.009G126800.1	-1.23	1.16	1.53	2.03
	FE685484	Phvul.009G126800.1	-1.34	-1.16	1.35	2.02
Protein disulphide oxidoreductase	CL4975Contig1	Phvul.008G027600.1	1.59	1.41	1.42	1.64
	CL4975Contig2	Phvul.008G027600.1	1.68	1.51	1.50	1.84

a single locus on chromosome 7 within an interval of approximately 20 kb. A γ -thionin contig is 58% identical in amino acid sequences with defensin D1, and their fold change values had a similar developmental profile. The corresponding genes were present on different chromosomes, 5 and 9. A total of 21 albumin-1 contigs were differentially expressed matching eight genes present at a unique locus spanning an interval of approximately 110 kb on chromosome 11. Among these, transcripts were most elevated for albumin-1A (10-fold), albumin-1E (7-fold), and albumin-1F contigs (11-fold). The three differentially expressed genes coding for the Bowman–Birk type proteinase inhibitor 2 and the double-headed trypsin inhibitor/trypsin chymotrypsin inhibitor are also co-localized on chromosome 4 within an interval of approximately 20 kb. Differential expression was observed at distinct developmental stages. Albumin-2, albumin-1E, the Bowman–Birk type proteinase inhibitor 2, and the double-headed trypsin inhibitor contigs had increased transcript levels starting from stage IV. This was followed by legumin and basic 7S globulin-2 at stage V. Defensin D1 was differentially expressed at stage VI, and albumin-1A and -B at stage VIII. Transcripts of the Kunitz trypsin protease inhibitor were elevated at stages VI and VIII. For some abundant transcripts, differential expression could not be evaluated when signal intensities were saturated, at values near 15.5 (see [Supplementary Fig. S1](#) at *JXB* online). This was the case for defensin D1 at stage VIII, and for the Bowman–Birk type proteinase inhibitor 2 and the double-headed trypsin inhibitor starting at stages VI and VIII. In parallel with transcripts of Cys-rich proteins, those of three different chaperones involved in the formation of disulphide bridges were also elevated ([Table 2](#)).

Co-ordinate regulation of sulphur metabolic transcripts

To obtain a better understanding of the mechanism(s) controlling the concentration of sulphur amino acids, the microarray data were examined for the differential expression of sulphur metabolic genes between the two genotypes ([Table 3](#)). Transcripts coding for enzymes associated with several processes of sulphur metabolism were significantly increased in SMARC1N-PN1 compared with SARC1, exclusively at the last two developmental stages, VI and VIII. The contigs were associated with specific genes in the *P. vulgaris* genome identified using a BlastX

search, and a nomenclature developed on the basis of phylogenetic clustering with *Arabidopsis* and soybean homologues ([Yi *et al.*, 2010](#); [Hell and Wirtz, 2011](#); [Takahashi *et al.*, 2011](#)). Differential expression of transcripts for sulphur metabolic enzymes was systematically validated by reverse transcription-quantitative PCR and the results of these experiments are presented in [Fig. 2](#). Transcript levels of two sulphate transporters, Sultr1;2 and Sultr3;3, were elevated in SMARC1N-PN1 at stage VI, which coincides with the active phase of storage protein accumulation ([Table 3](#)). Expression of genes coding for enzymes involved in the three steps of sulphate assimilation was increased in SMARC1N-PN1 ([Fig. 2](#)). Transcripts of sulphate adenylyltransferase, ATPS1, which catalyses the formation of an activated form of sulphate, adenosine 5'-phosphosulphate, were elevated at stages VI and VIII by up to 1.8-fold. Transcripts of adenylylsulphate reductase, APSR1, which forms sulphite, were elevated at stage VI, by 2-fold. Sulphite reductase, SIR, was not represented on the array. However, reverse transcription-quantitative PCR analysis indicated that its transcript was also elevated at stage VIII, by 1.5-fold. Transcript levels of selenium binding protein, SBP, a marker of sulphate assimilation ([Hugouvieux *et al.*, 2009](#)), were also increased by 3.5- and 4.9-fold at stages VI and VIII, respectively. Among Cys biosynthetic enzymes, transcripts for SERATs, SERAT1;1 and -1;2, which synthesize *O*-acetylserine, were elevated at both developmental stages in SMARC1N-PN1, particularly SERAT1;2, by 1.9-fold at stage VI ([Fig. 2](#)). SERAT1;1 and -1;2 were represented by a single contig on the microarray ([Table 3](#)) and their amino acid sequences are 99.3% identical. According to phylogeny and analysis with WoLFPSORT ([Horton *et al.*, 2007](#)), they are predicted to be localized in the cytosol. Transcripts of SERAT2;1, were decreased in SMARC1N-PN1 by approximately 1.5-fold at the last developmental stage ([Fig. 2](#)). *Arabidopsis* has two *SERAT2* genes whose products are localized in plastids or mitochondria ([Noji *et al.*, 1998](#)). A fusion between soybean SERAT2;1 and a fluorescent protein was detected in the cytosol and plastids ([Liu *et al.*, 2006](#)). WoLFPSORT results for common bean SERAT2;1 were ambiguous but indicated a putative plastidic localization.

Transcripts of cystathionine β -lyase, CBL, catalysing the second step in Met biosynthesis which produces homocysteine were elevated in SMARC1N-PN1 at both stages VI and VIII, by approximately 1.8-fold. Transcripts of homocysteine

Table 3. Fold change of transcripts for sulphur metabolic genes in SMARC1N-PN1 compared with SARC1. A negative value refers to a reduced expression in SMARC1N-PN1 by the corresponding fold change. Values significant at $P \leq 0.05$ are highlighted in bold. Protein accession was identified by BlastX of the early release of the *Phaseolus vulgaris* genome.

Enzyme	Gene	Contig/singleton	Protein	Developmental stage			
				IV	V	VI	VIII
Sulphate transporter	<i>Sultr1;2</i>	CL5762Contig1	Phvul.009G028500.1	1.11	1.04	1.50	1.07
	<i>Sultr3;3</i>	CL8298Contig1	Phvul.004G161600.1	-1.17	1.12	1.46	1.31
Sulphate adenyltransferase	<i>ATPS1</i>	EX304361	Phvul.007G062900.1	-1.42	1.00	1.05	1.45
Adenyl sulphate reductase	<i>APSR1</i>	CL1146Contig1	Phvul.006G149200.1	-1.26	-1.15	1.66	-1.14
		CL1146Contig2	Phvul.006G149200.1	-1.38	1.10	1.90	-1.09
		EG948451	Phvul.006G149200.1	-1.33	-1.20	1.50	-1.14
Sulphite oxidase	<i>SO</i>	CL6806Contig1	Phvul.004G054200.1	1.06	1.09	1.62	1.54
Serine acetyltransferase	<i>SERAT1;1/-1;2</i>	PVUSE3NG_RP_008_F02	Phvul.001G170600.1/-010G110600.1	1.06	1.41	1.58	1.08
		CL1591Contig1	Phvul.006G055200.1	1.04	-1.20	-1.04	-1.52
Cystathionine β -lyase	<i>CBL</i>	CL6595Contig1	Phvul.001G125400.1	1.05	1.12	1.71	1.65
Homocysteine S-methyltransferase	<i>HMT3</i>	CL2920Contig1	Phvul.007G060300.1	-1.22	-1.10	1.41	1.19
		FE897548	Phvul.007G060300.1	-1.29	-1.09	1.57	1.76
Methionine γ -lyase	<i>MGL1</i>	CL2938Contig1	Phvul.001G082000.1	1.03	-1.31	1.12	1.53
		CL2938Contig2	Phvul.001G082000.1	-1.02	-1.02	1.06	1.47
		CL5700Contig1	Phvul.004G090200.1	1.02	1.08	1.17	1.49
Branched chain amino acid Amino transferase	<i>BCAT1</i>	CL2797Contig1	Phvul.009G075100.1	1.24	-1.03	1.75	1.26
Tyrosine aminotransferase	<i>TAT</i>	CL481Contig1	Phvul.011G157500.1/-2	1.11	1.11	1.47	1.46
		CL360Contig1	Phvul.001G265900.1	-1.07	-1.16	2.82	3.79
Selenium binding protein	<i>SBP</i>	CL360Contig2	Phvul.001G265900.1	-1.22	1.05	1.05	2.01
		FE898012	Phvul.001G265900.1	-1.02	-1.18	2.23	3.18
		PVUSE4NG_RP_013_M18	Phvul.001G265900.1	1.00	-1.18	2.34	3.31

S-methyltransferase, HMT3, which catalyses the transfer of the methyl group from *S*-methyl-Met or *S*-adenosylmethionine to homocysteine, producing Met, were also elevated by 1.6-fold at stage VIII. Transcripts for enzymes that are potentially involved in Met catabolism, including Met γ -lyase, MGL1, branched chain amino acid aminotransferase, BCAT1, and Tyr aminotransferase, TAT, were also increased.

Activation of Cys and Met biosynthesis is correlated with a depletion of *O*-acetylserine

To understand better the relationship between transcripts of metabolic genes and biochemical intermediates during seed development, free amino acids were profiled between SMARC1N-PN1 and SARC1. Free amino acid concentration was determined at the four developmental stages and expressed in nmol mg⁻¹ seed weight (see [Supplementary Fig. S2](#) at *JXB* online). The ratio of amino acid concentration in SMARC1N-PN1 relative to SARC1 was expressed in a log₂ scale. Data were classified by *k*-means analysis into six clusters ([Fig. 3](#)). One grouped the nitrogen-rich amino acids, Asn, Arg, His, citrulline, and Gln, whose concentration was lower in SMARC1N-PN1 at the first two developmental stages and higher at the last two. In mature seed of SMARC1N-PN1, the levels of these amino acids, except Gln, as well as the total Arg concentration, are elevated as a compensatory mechanism for the lack of major seed proteins ([Taylor et al., 2008](#)). The cluster grouping Ser,

Ala, Val, Orn, and Lys showed a similar pattern as the previous one, except that the ratio of concentrations between genotypes was less elevated at the last developmental stage. Among these amino acids, the concentration of Ala and Lys is also elevated in mature seed of SMARC1N-PN1 ([Taylor et al., 2008](#)). The largest cluster grouped amino acids whose levels were similar between genotypes at the first developmental stages and slightly elevated in SMARC1N-PN1 at stage VIII. Within this cluster, levels of Asp, Gly, and γ -Glu-Leu are also elevated in mature seed of SMARC1N-PN1. Cys was part of this group, and its levels were consistently higher in SMARC1N-PN1 as compared with SARC1 throughout development (see [Supplementary Fig. S2](#) at *JXB* online). Concentrations were fairly similar between genotypes for the cluster grouping Thr, α -amino-*N*-butyric acid, Tyr, and Phe. These amino acids are found at a similar level in mature seed of the two genotypes. *O*-Acetylserine was clustered separately from all other free amino acids. Its levels were strongly reduced in SMARC1N-PN1 at the last two developmental stages, indicating that enhanced accumulation of Cys in the protein pool was correlated with a depletion of its immediate precursor. The last cluster grouped free amino acids present at equal or lower levels throughout development. As expected, these included *S*-methyl-Cys and γ -Glu-*S*-methyl-Cys. Also in this group, Met levels were lower in SMARC1N-PN1 at the first two developmental stages and became equal between genotypes as they reached very low levels at the last two developmental stages.

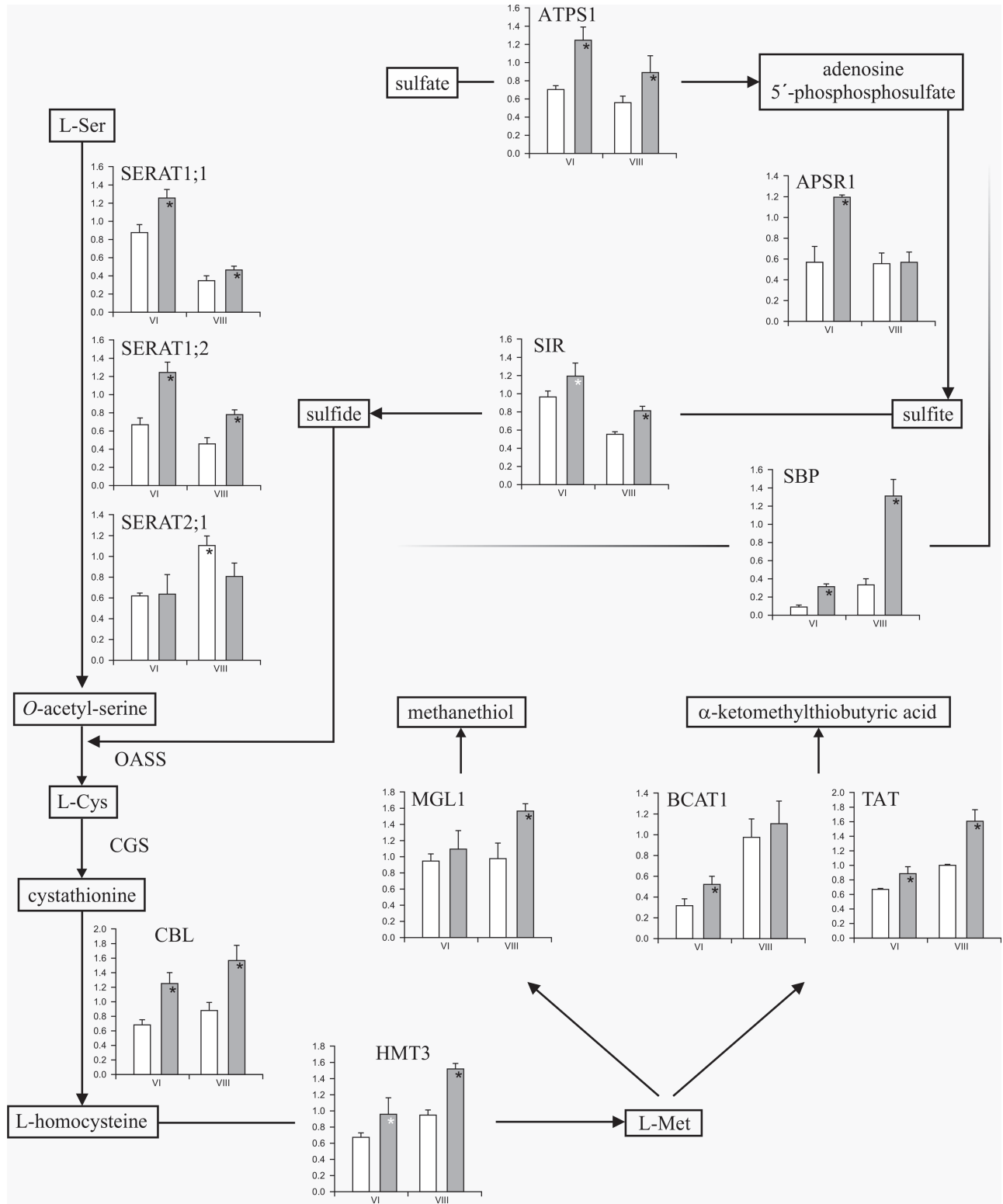


Fig. 2. Differential expression of genes in sulphur amino acid pathways in developing seeds of SARC1 and SMARC1N-PN1. Relative transcript expression was determined by reverse transcription-quantitative PCR. Data were normalized to the mean C_q of the reference gene, ubiquitin. Values are the means of three biological replicates \pm standard deviation, with each biological replicate the average of three technical replicates. White bars in the histograms correspond to values from SARC1 and grey bars to values from SMARC1N-PN1. ANOVA P values ≤ 0.05 are marked with a black asterisk. A white asterisk indicates a P value of 0.06 for SIR and 0.08 for HMT. Abbreviations are as follows: ATPS, sulphate adenylyltransferase; APSR, adenylyl sulphate reductase; SIR, sulphite reductase; SERAT, Ser acetyltransferase; OASS, *O*-acetylserine sulphhydrylase; CGS, cystathionine γ -synthase; CBL, cystathionine β -lyase; HMT, homocysteine *S*-methyltransferase; MGL, Met γ -lyase; BCAT, branched chain amino acid aminotransferase; TAT, Tyr aminotransferase; SBP, selenium binding protein.

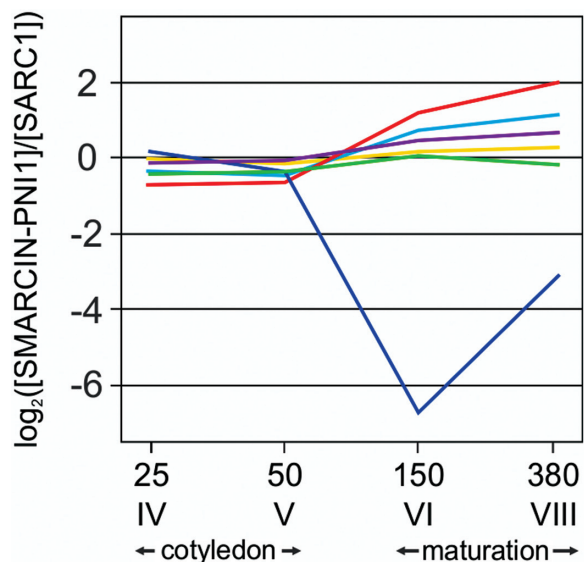


Fig. 3. Cluster analysis of free amino acid profiles during seed development. The ratio of free amino acid concentration in SMARC1N-PN1 versus SARC1 was classified using k-means analysis into six groups. The average of each cluster has been plotted. The cluster in red includes Asn, Gln, His, citrulline, and Arg; in pale blue Ser, Ala, Val, Orn, and Lys; in violet Asp, Glu, Gly, γ -amino-butyric acid, Pro, γ -Glu-Leu, Cys, and Leu; in yellow, Thr, α -amino-*N*-butyric acid, Tyr, and Phe; in green, γ -Glu-*S*-methyl-Cys, *S*-methyl-Cys, Me, and Ile; and in blue, *O*-acetylserine. Data on the y axis is the ratio of free amino acid concentration expressed in \log_2 scale (see [Supplementary Fig. S2](#) at *JXB* online).

Discussion

In this study, global gene expression profiles were compared during seed development between two common bean genotypes, SARC1 and SMARC1N-PN1 differing in seed protein composition. The concentration of sulphur amino acids in mature seed is a major trait differentiating these two genotypes. The main objective was to investigate whether genes associated with sulphur metabolism are regulated transcriptionally, in order to identify genes and enzymes which may contribute to differences in Cys, Met, and *S*-methyl-Cys concentration. A secondary objective was to further identify the sulphur-rich proteins which accumulate additional Cys and Met in SMARC1N-PN1. The development of a common bean-specific high density array can be considered an improvement over a previous study relying on cross-species hybridization to a soybean array (Yang *et al.*, 2010).

Transcripts of a fairly large number of contigs coding for sulphur-rich proteins had elevated levels in SMARC1N-PN1 and thus contributed to the increased concentration of Cys and Met. No fewer than eight protein types were involved, including the 11S globulin legumin, basic 7S globulin, albumin-2, defensin, albumin-1, the Bowman-Birk type proteinase inhibitor, the double-headed trypsin inhibitor, and the Kunitz trypsin inhibitor. Within each protein type, one or more genes were differentially expressed. For several of the sulphur-rich proteins, differential transcript expression was observed at the early stages, IV or V,

and preceded that of sulphur metabolic enzymes, which happened exclusively at stages VI and VIII. This suggests that sulphur metabolism was regulated by demand from the protein sink.

The transcript profiling results highlight a remarkable coordination in the expression of sulphur metabolic genes, which includes those participating in sulphate transport and assimilation, *de novo* Cys biosynthesis, Met biosynthesis, and Met catabolism. The increased levels of *Sultr1;2* and *-3;3* transcripts in SMARC1N-PN1 are consistent with *Arabidopsis* studies implicating the high affinity sulphate transporter *Sultr1;3* in phloem transport of sulphate (Yoshimoto *et al.*, 2003), and low affinity group 3 sulphate transporters in the transport of sulphate from the seed coat to the embryo (Zuber *et al.*, 2010). Sulphate uptake and assimilation share approximately equal control over cellular sulphur flux, according to the results of metabolic flux analysis (Vauclare *et al.*, 2002). Transcripts for all three enzymes of sulphate assimilation were elevated in SMARC1N-PN1, but the most robust increases were observed for *APSR1* and *ATPS1* at stage VI. *APSR* is considered the major regulatory step in sulphate assimilation (Vauclare *et al.*, 2002). However, in *Arabidopsis*, transcripts of *ATPS* can also be increased in response to sulphur deficiency (Logan *et al.*, 1996). Moreover, recent results with T-DNA insertion mutants indicate that down-regulating expression of *SIR* can severely restrict sulphur flux (Khan *et al.*, 2010). The large increase in transcript levels of *SBP*, whose expression is highly correlated with sulphate assimilatory genes in *Arabidopsis* (Hugouvieux *et al.*, 2009), supports the conclusion that sulphate assimilation was activated in SMARC1N-PN1.

The fact that *SERAT1;1* and *-1;2* transcripts were increased in SMARC1N-PN1 and not those of *OASS* genes supports the view that *SERAT* activity, and therefore the supply of *O*-acetylserine, limits the rate of Cys biosynthesis, because *OASS* activity is actually present in large excess (Heeg *et al.*, 2008). In *Arabidopsis* leaves, most *O*-acetylserine is synthesized by the mitochondrial *SERAT2;2* isoform, whereas in siliques, cytosolic isoforms including *SERAT1;1* were proposed to be responsible for *O*-acetylserine formation (Haas *et al.*, 2008; Watanabe *et al.*, 2008). Increased expression of *SERAT1* genes in SMARC1N-PN1 suggests that the large increase in total Cys concentration in seed was achieved by an activation of cytosolic *O*-acetylserine biosynthesis. This subcellular compartmentation may explain why transgenic over-expression of cytosolic *OASS* increased total Cys concentration in soybean seed, whereas over-expression of plastidic *SERAT* had no effect on sulphur amino acid concentration in chickpea seed (Kim *et al.*, 2012; Tabe *et al.*, 2010). Common bean has a single *SERAT2* isoform whose putative localization may be plastidic according to WoLFPSORT analysis. The reduced transcript levels of *SERAT2;1* in SMARC1N-PN1 raises the intriguing possibility that this gene may regulate *S*-methyl-Cys biosynthesis. This hypothesis implies that *S*-methyl-Cys is formed by the condensation of *O*-acetylserine and methanethiol. This reaction is presumed to take place in *Arabidopsis* cells grown with excess Met, following its cleavage by Met γ -lyase (Rébeillé *et al.*, 2006). If Cys and *S*-methyl-Cys biosynthesis share similar enzymes and a common precursor, *O*-acetylserine, their spatial separation within different subcellular compartments would provide a mechanism explaining their opposite regulation.

The fact that transcript levels of the Met biosynthetic enzyme, cystathionine γ -synthase (*CGS*) remained unchanged while *CBL* and *HMT3* transcript levels were increased in SMARC1N-PN1 is surprising because *CGS* regulates flux in the Met pathway while downstream steps are not expected to exert control. Indeed, over-expression of *CBL* in transgenic potato did not result in an increased concentration of Met (Maimann *et al.*, 2001). *CGS* shares a common substrate with Thr synthase, *O*-phosphohomoserine, and is thus located at a branch point with Thr biosynthesis in the Asp-derived amino acid pathway (Bartlem *et al.*, 2000; Zeh *et al.*, 2001). *S*-Adenosylmethionine acts as an allosteric activator of Thr synthase, effectively imposing a feedback on *CGS* (Curien *et al.*, 1998). According to kinetic modelling, flux through the Met branch is very sensitive to the concentration of *S*-adenosylmethionine, more so than through the Thr branch (Curien *et al.*, 2003, 2009). Modelling also predicts that flux through the Met branch is sensitive to the amount of *CGS*. The enzyme is fairly insensitive to changes in Cys concentration, due to its ping-pong mechanism whereby *O*-phosphohomoserine is bound as the first substrate. Post-transcriptional regulation of *CGS* by *S*-adenosylmethionine exerts a second type of slower control (Onoue *et al.*, 2011). In accordance with the above kinetic model, transgenic expression of *CGS* in *Arabidopsis* led to an increased Met concentration, and even more so for a feedback-insensitive form (Hacham *et al.*, 2008; Kim *et al.*, 2002). However, over-expression of potato *CGS* did not lead to an increased Met concentration, and its transcript was insensitive to feedback from exogenous Met (Kreft *et al.*, 2003). In the present study, since *CGS* transcript levels remained unchanged, one can predict that the concentration of *S*-adenosylmethionine may be decreased to allow enhanced flux through the Met pathway. The elevated levels of *MGL1* transcripts suggest an increased demand for Met, which may be associated with a reduction in *S*-adenosylmethionine concentration. The increased levels of *CBL* and *HMT3* transcripts observed in SMARC1N-PN1 possibly reflect the need to accommodate increased flux through the Met pathway.

In SMARC1N-PN1, the increase in total Met concentration, of 10%, is relatively small compared with that for total Cys, of 70% (Taylor *et al.*, 2008). Nevertheless, a co-ordinate increase in transcript levels of the Met biosynthetic genes, *CBL* and *HMT3* was observed. *HMT* is likely to be involved in the assimilation of *S*-methyl-Met transported to the seed (Bourgis *et al.*, 1999; Lee *et al.*, 2008). However, the fact that *MGL1* transcripts were elevated raises the intriguing possibility that some of the sulphur taken up as *S*-methyl-Met is channelled into Cys biosynthesis. In *Arabidopsis* plants, radiolabelled sulphur from [³⁵S]Met was incorporated into the Cys protein pool, and this was reduced but not abolished in an *mgl* knock-out mutant (Goyer *et al.*, 2007). *Arabidopsis* *MGL* has been linked to Ile biosynthesis (Joshi and Jander, 2009). However, Ile demand is unlikely to regulate the *MGL1* transcript in SMARC1N-PN1, since this genotype has lower levels of total Ile compared with SARC1 (Taylor *et al.*, 2008). Increased levels of transcripts for two aminotransferases implicated in Met catabolism in other species also supports a possible Met to Cys pathway. In *Arabidopsis*, *BCAT3* and *-4* participate in the formation of α -ketomethylthiobutyric acid from Met as part of glucosinolate

biosynthesis (Schuster *et al.*, 2006; Knill *et al.*, 2008). In bacteria and fungi, TAT is involved in the regeneration of Met from α -ketomethylthiobutyric acid in the Met salvage pathway (Pirkov *et al.*, 2008) [Plant Metabolic Network (PMN), <http://pmn.plantcyc.org/PLANT/NEW-IMAGE?type=NIL&object=PWY-4361-ARA&redirect=T> on [www.plantcyc.org](http://pmn.plantcyc.org) 16 February 2012], while in lactic acid bacteria, it is the main enzyme responsible for the biosynthesis of α -ketomethylthiobutyric acid required for aroma formation (Rijnen *et al.*, 2003; Sekowska *et al.*, 2004).

In vegetative tissue, transcriptional regulation of sulphur uptake and assimilation by demand is a well-established concept, with feedback inhibition by glutathione, and stimulation by *O*-acetylserine (Lappartient *et al.*, 1999; Neuenschwander *et al.*, 1991). Exogenous application of *O*-acetylserine mimics the effects of sulphur deficiency, and transcript levels of sulphate transporters and sulphate assimilatory genes are increased in mutants accumulating *O*-acetylserine (Hirai *et al.*, 2003; Ohkama-Ohtsu *et al.*, 2004). *O*-Acetylserine acts as a signalling molecule leading to changes in gene expression, independent of fluctuations in other sulphur-related metabolites (Hubberten *et al.*, 2012). In transgenic seeds expressing sunflower seed albumin, down-regulation of endogenous sulphur-rich proteins was associated with reduced levels of glutathione in rice (Hagan *et al.*, 2003), and increased levels of *O*-acetylserine in chickpea (Chiaiese *et al.*, 2004), both features associated with sulphur deficiency. In the present study, the high demand for Cys biosynthesis was correlated with reduced levels of *O*-acetylserine. Co-ordinate regulation of transcripts for most enzymatic steps emphasizes shared control over the metabolic flux of sulphur into Cys and Met, rather than the influence of a few key enzymatic steps (Stütt *et al.*, 2010).

Supplementary data

Supplementary data can be found at *JXB* online.

Supplementary Table S1. Primers used for RT-quantitative PCR validation of differentially expressed genes.

Supplementary Fig. S1. Transcript profiles of genes coding for sulphur-rich proteins during seed development.

Supplementary Fig. S2. Free amino acid profiles in developing seeds of SARC1 and SMARC1N-PN1.

Acknowledgements

This research was supported in part by the Genomics R&D Initiative of the Government of Canada, and the Ontario Research Fund, Research Excellence Program of the Ontario Ministry of Research and Innovation. DL was the recipient of a Visiting Fellowship in Canadian Government Laboratories of the Natural Sciences and Engineering Research Council of Canada. We thank Alex Molnar at the Southern Crop Protection and Food Research Centre for preparation of figures. We are grateful to staff at the Plant Biotechnology Institute, Don Schwab of the DNA Technologies Laboratory for array design and synthesis, and Yongguo Cao and Daoquan Xiang for technical assistance

with array hybridization and imaging. We acknowledge the help of Rey Interior at the Advanced Protein Technology Centre, Hospital for Sick Children, Toronto, Ontario, Canada, with amino acid analysis.

References

- Anderson JW, Fitzgerald MA.** 2001. Physiological and metabolic origin of sulphur for the synthesis of seed storage proteins. *Journal of Plant Physiology* **158**, 447–456.
- Aragao FJL, Barros LMG, de Sousa MV, de Sa MFG, Almeida ERP, Gander ES, Rech EL.** 1999. Expression of a methionine-rich storage albumin from the Brazil nut (*Bertholletia excelsa* HBK, Lecythidaceae) in transgenic bean plants (*Phaseolus vulgaris* L., Fabaceae). *Genetics and Molecular Biology* **22**, 445–449.
- Bartlem D, Lambein I, Okamoto T, Itaya A, Uda Y, Kijima F, Tamaki Y, Nambara E, Naito S.** 2000. Mutation in the threonine synthase gene results in an over-accumulation of soluble methionine in *Arabidopsis*. *Plant Physiology* **123**, 101–110.
- Bobb AJ, Eiben HG, Bustos MM.** 1995. PvAlf, an embryo-specific acidic transcriptional activator enhances gene expression from phaseolin and phytohemagglutinin promoters. *The Plant Journal* **8**, 331–343.
- Bourgis F, Roje S, Nuccio ML, et al.** 1999. S-Methylmethionine plays a major role in phloem sulfur transport and is synthesized by a novel type of methyltransferase. *The Plant Cell* **11**, 1485–1497.
- Broughton WJ, Hernandez G, Blair M, Beebe S, Gepts P, Vanderleyden J.** 2003. Beans (*Phaseolus* spp.): model food legumes. *Plant and Soil* **252**, 55–128.
- Bruneau L, Chapman R, Marsolais F.** 2006. Co-occurrence of both L-asparaginase subtypes in *Arabidopsis*: *At3g16150* encodes a K⁺-dependent L-asparaginase. *Planta* **224**, 668–679.
- Chiaiese P, Ohkama-Ohtsu N, Molvig L, Godfree R, Dove H, Hocart C, Fujiwara T, Higgins TJ, Tabe LM.** 2004. Sulphur and nitrogen nutrition influence the response of chickpea seeds to an added, transgenic sink for organic sulphur. *Journal of Experimental Botany* **55**, 1889–1901.
- Curien G, Bastien O, Robert-Genthon M, Cornish-Bowden A, Cardenas ML, Dumas R.** 2009. Understanding the regulation of aspartate metabolism using a model based on measured kinetic parameters. *Molecular Systems Biology* **5**, 271.
- Curien G, Job D, Douce R, Dumas R.** 1998. Allosteric activation of *Arabidopsis* threonine synthase by S-adenosylmethionine. *Biochemistry* **37**, 13212–13221.
- Curien G, Ravel S, Dumas R.** 2003. A kinetic model of the branch-point between the methionine and threonine biosynthesis pathways in *Arabidopsis thaliana*. *European Journal of Biochemistry* **270**, 4615–4627.
- Demidov D, Horstmann C, Meixner M, Pickardt T, Saalbach I, Galili G, Muentz K.** 2003. Additive effects of the feed-back insensitive bacterial aspartate kinase and the Brazil nut 2S albumin on the methionine content of transgenic narbon bean (*Vicia narbonensis* L.). *Molecular Breeding* **11**, 187–201.
- Dinkins RD, Reddy MSS, Meurer CA, Yan B, Trick H, Thibaud-Nissen F, Finer JJ, Parrott WA, Collins GB.** 2001. Increased sulfur amino acids in soybean plants overexpressing the maize 15kDa zein protein. *In vitro Cellular and Developmental Biology-Plant* **37**, 742–747.
- Galili G, Amir R, Hoefgen R, Hesse H.** 2005. Improving the levels of essential amino acids and sulfur metabolites in plants. *Biological Chemistry* **386**, 817–831.
- Giada MDR, Teresa M, Miranda M, Marquez UML.** 1998. Sulphur gamma-glutamyl peptides in mature seeds of common beans (*Phaseolus vulgaris* L.). *Food Chemistry* **61**, 177–184.
- Goyer A, Collakova E, Shachar-Hill Y, Hanson AD.** 2007. Functional characterization of a methionine gamma-lyase in *Arabidopsis* and its implication in an alternative to the reverse trans-sulfuration pathway. *Plant and Cell Physiology* **48**, 232–242.
- Haas BJ, Delcher AL, Mount SM, et al.** 2003. Improving the *Arabidopsis* genome annotation using maximal transcript alignment assemblies. *Nucleic Acids Research* **31**, 5654–5666.
- Haas FH, Heeg C, Queiroz R, Bauer A, Wirtz M, Hell R.** 2008. Mitochondrial serine acetyltransferase functions as a pacemaker of cysteine synthesis in plant cells. *Plant Physiology* **148**, 1055–1067.
- Hacham Y, Matityahu I, Schuster G, Amir R.** 2008. Overexpression of mutated forms of aspartate kinase and cystathionine gamma-synthase in tobacco leaves resulted in the high accumulation of methionine and threonine. *The Plant Journal* **54**, 260–271.
- Hagan ND, Upadhyaya N, Tabe LM, Higgins TJV.** 2003. The redistribution of protein sulfur in transgenic rice expressing a gene for a foreign, sulfur-rich protein. *The Plant Journal* **34**, 1–11.
- Hanada K, Hirano H.** 2004. Interaction of a 43-kDa receptor-like protein with a 4-kDa hormone-like peptide in soybean. *Biochemistry* **43**, 12105–12112.
- Heeg C, Kruse C, Jost R, Gutensohn M, Ruppert T, Wirtz M, Hell R.** 2008. Analysis of the *Arabidopsis* O-acetylserine(thiol)lyase gene family demonstrates compartment-specific differences in the regulation of cysteine synthesis. *The Plant Cell* **20**, 168–185.
- Hell R, Wirtz M.** 2011. Molecular biology, biochemistry and cellular physiology of cysteine metabolism in *Arabidopsis thaliana*. *The Arabidopsis Book* **9**, e0154.
- Hirai MY, Fujiwara T, Awazuhara M, Kimura T, Noji M, Saito K.** 2003. Global expression profiling of sulfur-starved *Arabidopsis* by DNA microarray reveals the role of O-acetyl-L-serine as a general regulator of gene expression in response to sulfur nutrition. *The Plant Journal* **33**, 651–663.
- Horton P, Park KJ, Obayashi T, Fujita N, Harada H, Adams-Collier CJ, Nakai K.** 2007. WoLF PSORT: protein localization predictor. *Nucleic Acids Research* **35**, W585–587.
- Huang S, Frizzi A, Malvar TM.** 2009. Engineering high lysine corn. In: Krishnan H, ed. *Modification of seed composition to promote health and nutrition*. Madison: American Society of Agronomy, Crop Science Society of America, Soil Science Society of America, 233–248.
- Hubberten HM, Klie S, Caldana C, Degenkolbe T, Willmitzer L, Hoefgen R.** 2012. Additional role of O-acetylserine as a sulfur status-independent regulator during plant growth. *The Plant Journal* **70**, 666–677.

- Hugouvieux V, Dutilleul C, Jourdain A, Reynaud F, Lopez V, Bourguignon J.** 2009. Arabidopsis putative selenium-binding protein1 expression is tightly linked to cellular sulfur demand and can reduce sensitivity to stresses requiring glutathione for tolerance. *Plant Physiology* **151**, 768–781.
- Joshi V, Jander G.** 2009. Arabidopsis methionine γ -lyase is regulated according to isoleucine biosynthesis needs but plays a subordinate role to threonine deaminase. *Plant Physiology* **151**, 367–378.
- Kelly JD, Hefle SL.** 2000. 2S methionine-rich protein (SSA) from sunflower seed is an IgE-binding protein. *Allergy* **55**, 556–560.
- Khan MS, Haas FH, Samami AA, et al.** 2010. Sulfite reductase defines a newly discovered bottleneck for assimilatory sulfate reduction and is essential for growth and development in *Arabidopsis thaliana*. *The Plant Cell* **22**, 1216–1231.
- Kim J, Lee M, Chalam R, Martin MN, Leustek T, Boerjan W.** 2002. Constitutive overexpression of cystathionine gamma-synthase in Arabidopsis leads to accumulation of soluble methionine and S-methylmethionine. *Plant Physiology* **128**, 95–107.
- Kim WS, Chronis D, Juergens M, Schroeder AC, Hyun SW, Jez JM, Krishnan HB.** 2012. Transgenic soybean plants overexpressing O-acetylserine sulfhydrylase accumulate enhanced levels of cysteine and Bowman–Birk protease inhibitor in seeds. *Planta* **235**, 13–23.
- Kim WS, Krishnan HB.** 2004. Expression of an 11 kDa methionine-rich delta-zein in transgenic soybean results in the formation of two types of novel protein bodies in transitional cells situated between the vascular tissue and storage parenchyma cells. *Plant Biotechnology Journal* **2**, 199–210.
- Knill T, Schuster J, Reichelt M, Gershenzon J, Binder S.** 2008. Arabidopsis branched-chain aminotransferase 3 functions in both amino acid and glucosinolate biosynthesis. *Plant Physiology* **146**, 1028–1039.
- Kreft O, Hoefgen R, Hesse H.** 2003. Functional analysis of cystathionine gamma-synthase in genetically engineered potato plants. *Plant Physiology* **131**, 1843–1854.
- Lappartient AG, Vidmar JJ, Leustek T, Glass AD, Touraine B.** 1999. Inter-organ signaling in plants: regulation of ATP sulfurylase and sulfate transporter genes expression in roots mediated by phloem-translocated compound. *The Plant Journal* **18**, 89–95.
- Lee MS, Huang TF, Toro-Ramos T, Fraga M, Last RL, Jander G.** 2008. Reduced activity of *Arabidopsis thaliana* HMT2, a methionine biosynthetic enzyme, increases seed methionine content. *The Plant Journal* **54**, 310–320.
- Liu F, Yoo B-C, Lee J-Y, Pan W, Harmon AC.** 2006. Calcium-regulated phosphorylation of soybean serine acetyltransferase in response to oxidative stress. *Journal of Biological Chemistry* **281**, 27405–27415.
- Logan HM, Cathala N, Grignon C, Davidian JC.** 1996. Cloning of a cDNA encoded by a member of the *Arabidopsis thaliana* ATP sulfurylase multigene family. Expression studies in yeast and in relation to plant sulfur nutrition. *Journal of Biological Chemistry* **271**, 12227–12233.
- Lovati MR, Manzoni C, Castiglioni S, Parolari A, Magni C, Duranti M.** 2012. Lupin seed γ -conglutin lowers blood glucose in hyperglycaemic rats and increases glucose consumption of HepG2 cells. *British Journal of Nutrition* **107**, 67–73.
- Magni C, Sessa F, Accardo E, Vanoni M, Morazzoni P, Scarafoni A, Duranti M.** 2004. Conglutin γ , a lupin seed protein, binds insulin *in vitro* and reduces plasma glucose levels of hyperglycemic rats. *Journal of Nutritional Biochemistry* **15**, 646–650.
- Maimann S, Hoefgen R, Hesse H.** 2001. Enhanced cystathionine beta-lyase activity in transgenic potato plants does not force metabolite flow towards methionine. *Planta* **214**, 163–170.
- Marsolais F, Pajak A, Yin F, et al.** 2010. Proteomic analysis of common bean seed with storage protein deficiency reveals up-regulation of sulfur-rich proteins and starch and raffinose metabolic enzymes, and down-regulation of the secretory pathway. *Journal of Proteomics* **73**, 1587–1600.
- Molvig L, Tabe LM, Eggum BO, Moore AE, Craig S, Spencer D, Higgins TJ.** 1997. Enhanced methionine levels and increased nutritive value of seeds of transgenic lupins (*Lupinus angustifolius* L.) expressing a sunflower seed albumin gene. *Proceedings of the National Academy of Sciences, USA* **94**, 8393–8398.
- Naeve SL, Shibles RM.** 2005. Distribution and mobilization of sulfur during soybean reproduction. *Crop Science* **45**, 2540–2551.
- Neuenschwander U, Suter M, Brunold C.** 1991. Regulation of sulfate assimilation by light and O-acetyl-L-serine in *Lemna minor* L. *Plant Physiology* **97**, 253–258.
- Noji M, Inoue K, Kimura N, Gouda A, Saito K.** 1998. Isoform-dependent differences in feedback regulation and subcellular localization of serine acetyltransferase involved in cysteine biosynthesis from *Arabidopsis thaliana*. *Journal of Biological Chemistry* **273**, 32739–32745.
- Nordlee JA, Taylor SL, Townsend JA, Thomas LA, Bush RK.** 1996. Identification of a Brazil-nut allergen in transgenic soybeans. *New England Journal of Medicine* **334**, 688–692.
- Ohkama-Ohtsu N, Kasajima I, Fujiwara T, Naito S.** 2004. Isolation and characterization of an Arabidopsis mutant that overaccumulates O-acetyl-L-Ser. *Plant Physiology* **136**, 3209–3222.
- Onoue N, Yamashita Y, Nagao N, Goto DB, Onouchi H, Naito S.** 2011. S-Adenosyl-L-methionine induces compaction of nascent peptide chain inside the ribosomal exit tunnel upon translation arrest in the *Arabidopsis* *CGS1* gene. *Journal of Biological Chemistry* **286**, 14903–14912.
- Osborn TC, Hartweck LM, Harmsen RH, Vogelzang RD, Kmiecik KA, Bliss FA.** 2003. Registration of *Phaseolus vulgaris* genetic stocks with altered seed protein compositions. *Crop Science* **43**, 1570–1571.
- Padovese R, Kina SM, Barros RMC, Borelli P, Marquez UML.** 2001. Biological importance of gamma-glutamyl-S-methylcysteine of kidney bean (*Phaseolus vulgaris* L.). *Food Chemistry* **73**, 291–297.
- Pertea G, Huang X, Liang F, et al.** 2003. TIGR Gene Indices clustering tools (TGICL): a software system for fast clustering of large EST datasets. *Bioinformatics* **19**, 651–652.
- Pirkov I, Norbeck J, Gustafsson L, Albers E.** 2008. A complete inventory of all enzymes in the eukaryotic methionine salvage pathway. *FEBS Journal* **275**, 4111–4120.
- Polesani M, Bortesi L, Ferrarini A, Zamboni A, Fasoli M, Zadra C, Lovato A, Pezzotti M, Delledonne M, Polverari A.** 2010. General and species-specific transcriptional responses to downy

mildew infection in a susceptible (*Vitis vinifera*) and a resistant (*V. riparia*) grapevine species. *BMC Genomics* **11**, 117.

Rébeillé F, Jabrin S, Bligny R, Loizeau K, Gambonnet B, Van Wilder V, Douce R, Ravanel S. 2006. Methionine catabolism in *Arabidopsis* cells is initiated by a gamma-cleavage process and leads to S-methylcysteine and isoleucine syntheses. *Proceedings of the National Academy of Sciences, USA* **103**, 15687–15692.

Rijnen L, Yvon M, Kranenburg Rv, Courtin P, Verheul A, Chambellon E, Smit G. 2003. Lactococcal aminotransferases AraT and BcaT are key enzymes for the formation of aroma compounds from amino acids in cheese. *International Dairy Journal* **13**, 805–812.

Scarafoni A, Ronchi A, Duranti M. 2010. γ -Conglutin, the *Lupinus albus* XEGIP-like protein, whose expression is elicited by chitosan, lacks of the typical inhibitory activity against GH12 endo-glucanases. *Phytochemistry* **71**, 142–148.

Schuster J, Knill T, Reichelt M, Gershenzon J, Binder S. 2006. BRANCHED-CHAIN AMINOTRANSFERASE4 is part of the chain elongation pathway in the biosynthesis of methionine-derived glucosinolates in *Arabidopsis*. *The Plant Cell* **18**, 2664–2679.

Sekowska A, Denervaud V, Ashida H, Michoud K, Haas D, Yokota A, Danchin A. 2004. Bacterial variations on the methionine salvage pathway. *BMC Microbiology* **4**, 9.

Stitt M, Sulpice R, Keurentjes J. 2010. Metabolic networks: how to identify key components in the regulation of metabolism and growth. *Plant Physiology* **152**, 428–444.

Streit LG, Beach LR, Register JC, Jung R, Fehr WR. 2001. Association of the Brazil nut protein gene and Kunitz trypsin inhibitor alleles with soybean protease inhibitor activity and agronomic traits. *Crop Science* **41**, 1757–1760.

Tabé L, Wirtz M, Molvig L, Droux M, Hell R. 2010. Overexpression of serine acetyltransferase produced large increases in O-acetylserine and free cysteine in developing seeds of a grain legume. *Journal of Experimental Botany* **61**, 721–733.

Tabé LM, Droux M. 2001. Sulfur assimilation in developing lupin cotyledons could contribute significantly to the accumulation of organic sulfur reserves in the seed. *Plant Physiology* **126**, 176–187.

Tabé LM, Droux M. 2002. Limits to sulfur accumulation in transgenic lupin seeds expressing a foreign sulfur-rich protein. *Plant Physiology* **128**, 1137–1148.

Takahashi H, Kopriva S, Giordano M, Saito K, Hell R. 2011. Sulfur assimilation in photosynthetic organisms: molecular functions and regulations of transporters and assimilatory enzymes. *Annual Review of Plant Biology* **62**, 157–184.

Tan Q, Zhang L, Grant J, Cooper P, Tegeder M. 2010. Increased phloem transport of S-methylmethionine positively affects sulfur and nitrogen metabolism and seed development in pea plants. *Plant Physiology* **154**, 1886–1896.

Taylor M, Chapman R, Beyaert R, Hernández-Sebastià C, Marsolais F. 2008. Seed storage protein deficiency improves sulfur amino acid content in common bean (*Phaseolus vulgaris* L.): redirection of sulfur from gamma-glutamyl-S-methyl-cysteine. *Journal of Agricultural and Food Chemistry* **56**, 5647–5654.

Townsend JA, Thomas LA. 1994. Factors which influence the Agrobacterium-mediated transformation of soybean. *Journal of Cellular Biochemistry. Supplement* **18A**, 78.

Vauclare P, Kopriva S, Fell D, Suter M, Sticher L, von Ballmoos P, Krahenbuhl U, den Camp RO, Brunold C. 2002. Flux control of sulphate assimilation in *Arabidopsis thaliana*: adenosine 5'-phosphosulphate reductase is more susceptible than ATP sulphurylase to negative control by thiols. *The Plant Journal* **31**, 729–740.

Walbot V, Clutter M, Sussex IM. 1972. Reproductive development and embryogeny in *Phaseolus*. *Phytomorphology* **22**, 59–68.

Watanabe M, Mochida K, Kato T, Tabata S, Yoshimoto N, Noji M, Saito K. 2008. Comparative genomics and reverse genetics analysis reveal indispensable functions of the serine acetyltransferase gene family in *Arabidopsis*. *The Plant Cell* **20**, 2484–2496.

WHO. 2007. *Protein and amino acid requirements in human nutrition*. Report of a joint FAO/WHO/UNU expert consultation. Geneva: WHO.

Yang SS, Valdes-Lopez O, Xu WW, Bucciarelli B, Gronwald JW, Hernandez G, Vance CP. 2010. Transcript profiling of common bean (*Phaseolus vulgaris* L.) using the GeneChip soybean genome array: optimizing analysis by masking biased probes. *BMC Plant Biology* **10**, 85.

Yi H, Ravilious GE, Galant A, Krishnan HB, Jez JM. 2010. From sulfur to homogluthathione: thiol metabolism in soybean. *Amino Acids* **39**, 963–978.

Yin F, Pajak A, Chapman R, Sharpe A, Huang S, Marsolais F. 2011. Analysis of common bean expressed sequence tags identifies sulfur metabolic pathways active in seed and sulfur-rich proteins highly expressed in the absence of phaseolin and major lectins. *BMC Genomics* **12**, 268.

Yoshimoto N, Inoue E, Saito K, Yamaya T, Takahashi H. 2003. Phloem-localizing sulfate transporter, Sultr1;3, mediates re-distribution of sulfur from source to sink organs in *Arabidopsis*. *Plant Physiology* **131**, 1511–1517.

Yoshizawa T, Shimizu T, Yamabe M, Taichi M, Nishiuchi Y, Shichijo N, Unzai S, Hirano H, Sato M, Hashimoto H. 2011. Crystal structure of basic 7S globulin, a xyloglucan-specific endo- β -1,4-glucanase inhibitor protein-like protein from soybean lacking inhibitory activity against endo- β -glucanase. *FEBS Journal* **278**, 1944–1954.

Zeh M, Casazza AP, Kreft O, Roessner U, Bieberich K, Willmitzer L, Hoefgen R, Hesse H. 2001. Antisense inhibition of threonine synthase leads to high methionine content in transgenic potato plants. *Plant Physiology* **127**, 792–802.

Zhang P, Dreher K, Karthikeyan A et al. 2010. Creation of a genome-wide metabolic pathway database for *Populus trichocarpa* using a new approach for reconstruction and curation of metabolic pathways for plants. *Plant Physiology* **153**, 1479–1491.

Zuber H, Davidian JC, Aubert G et al. 2010. The seed composition of *Arabidopsis* mutants for the group 3 sulfate transporters indicates a role in sulfate translocation within developing seeds. *Plant Physiology* **154**, 913–926.