

Video Article

Protocol for Long Duration Whole Body Hyperthermia in Mice

Vikas Duhan^{1*}, Neha Joshi^{1*}, P. Nagarajan², Pramod Upadhyay¹¹Product Development Cell, National Institute of Immunology²Small Animal Facility, National Institute of Immunology

*These authors contributed equally

Correspondence to: Pramod Upadhyay at pkumar@nii.ac.inURL: <http://www.jove.com/video/3801/>

DOI: 10.3791/3801

Keywords: Medicine, Issue 66, Anatomy, Physiology, Mouse, Fever, Whole Body Hyperthermia, Temperature Spikes, core body temperature

Date Published: 8/25/2012

Citation: Duhan, V., Joshi, N., Nagarajan, P., Upadhyay, P. Protocol for Long Duration Whole Body Hyperthermia in Mice. *J. Vis. Exp.* (66), e3801 10.3791/3801, DOI : 10.3791/3801 (2012).

Abstract

Hyperthermia is a general term used to define the increase in core body temperature above normal. It is often used to describe the increased core body temperature that is observed during fever. The use of hyperthermia as an adjuvant has emerged as a promising procedure for tumor regression in the field of cancer biology. For this purpose, the most important requirement is to have reliable and uniform heating protocols. We have developed a protocol for hyperthermia (whole body) in mice. In this protocol, animals are exposed to cycles of hyperthermia for 90 min followed by a rest period of 15 min. During this period mice have easy access to food and water. High body temperature spikes in the mice during first few hyperthermia exposure cycles are prevented by immobilizing the animal. Additionally, normal saline is administered in first few cycles to minimize the effects of dehydration. This protocol can simulate fever like conditions in mice up to 12-24 hr. We have used 8-12 weeks old BALB/Cj female mice to demonstrate the protocol.

Video Link

The video component of this article can be found at <http://www.jove.com/video/3801/>

Protocol

1. Animal Ethics

Before performing the long duration hyperthermia on mice make sure that the procedure has been approved by Institutional Animal Care and Use Committee. All the procedures discussed in this paper and shown in the accompanying video were approved by the Institutional Animal Ethics Committee of the National Institute of Immunology.

2. Understanding Hyperthermia

Whole Body Hyperthermia (WBH) is delivered by placing the animals in prewarmed cages that are placed in incubator maintained at 39.5°C. During the standardization of protocol, a temperature sensor was surgically implanted in the mice and their body temperature was monitored in different experimental conditions. It was observed that upon placing the animals in heated environment, their temperature gradually increased from 37 °C to up to 42 °C over the duration of 100 min (**Figure 1**). The resulting "spike" in temperature is intriguing as the internal body temperature shot even higher than the external environmental temperature.

When the body temperature exceeded 40 °C, the animal would show signs of stress and dehydration such as wetting around the snout. Increase the body temperature beyond 40 °C, will lead to wetting and irreversible stress or even death of animals due to heat stress. So it is important to prevent the temperature spikes during the course of hyperthermia.

This phenomenon of high temperature spikes is associated with the physical hyperactivity of animal during hyperthermia exposure. Similar temperature spikes were observed by other groups too and were associated with the physical hyperactivity of the animal upon being introduced to environment having higher temperatures¹⁰.

In our protocol, mice are immobilized during the hyperthermia exposure. As shown in **Figure 2**, immobilization of animal prevents the temperature spikes.

We have used 8-12 weeks old BALB/Cj mice for demonstrating this protocol. The protocol is not restricted to a particular type/strain of the mice.

3. Preparing for the Experiment

3.1 Incubator

This experiment can be performed in a normal CO₂ incubator as they have a good temperature control. Disconnect CO₂ gas supply and remove water holding tray of the CO₂ incubator. In some models of incubators it is possible to switch off the CO₂ controller. Arrange shelves of the incubator so that a mice cage could be placed conveniently inside. Set the temperature of the incubator at 39.5 °C.

3.2 Cages

Typically, the hyperthermia experiment is performed on 4 mice at a time. Two cages are required; one is placed inside the incubator and the other is placed outside at room temperature. Bedding of cages is avoided, as the patches of bedding become wet with time which results in non-uniform temperature inside the cage. The outside cage should have food pellets and water bottle.

3.3 Mice immobilization tubes

During the course of first 4 cycles of hyperthermia mice are immobilized in perforated tubes. These immobilization tubes can be made from 50 ml 'centrifuge' tubes by piercing 3 mm holes all over its body and four of such tubes will be required. The 50ml tube can conveniently immobilize BALB/Cj mice which are older than 8 weeks. Tubes of appropriate sizes may be required for some unusually different strain of mice or for mice which are very young or older than 50 weeks.

Place immobilization tubes and a cage inside the incubator maintained at 39.5 °C. Wait for at least 2 hour so that the cage and immobilization tubes attain the temperature of the incubator.

4. First cycle of the Hyperthermia

Mice may experience dehydration during the hyperthermia exposure. Therefore before beginning the experiment, administer 0.5 ml normal saline intraperitoneally to every mouse. Use a 26 G needle with 1 ml syringe.

Quickly take out the cage placed in the incubator, place one animal in each immobilization tubes and place the cage back in the incubator. Record the time. It is essential to keep the cage at the same place in the incubator every time.

After 90 min, take out the cage from the incubator. Release animals from the immobilization tubes and place them in the cage at normal temperature with easy access to food and water. Place empty immobilization tubes back in the incubator.

After 15 min, the second cycle of hyperthermia is started by delivering 0.5 ml saline intraperitoneally to every mouse.

They are then immobilized in 50 ml perforated immobilization tubes and placed in the incubator.

5. Subsequent Hyperthermia Cycles

For first 4 cycles, it is essential to immobilize mice during the hyperthermia exposure and for the first two cycles, saline injection is given before beginning the hyperthermia period.

After these cycles of hyperthermia followed by rest are completed, mice get acclimatize and do not become hyperactive during the hyperthermia exposure. The intraperitoneal injection of saline may not be necessary if mice readily take food and water during the resting time.

6. After All the Cycles Completed, the Final Step is to Examine the Animals

There should not be any death during the hyperthermia cycles. Every animal has to be watched very carefully in the first few cycles. Rapidly look for any wetting around the snout. This symptom is a signature of dehydration. Mice with such symptoms should immediately be given 0.5 ml normal saline i.p and rest at room temperature. Most of the immobilized mice will not require any additional care and will successfully bear the stress the hyperthermia.

After completing required cycles, animals may look weak and dehydrated but they will quickly recover within few hours.

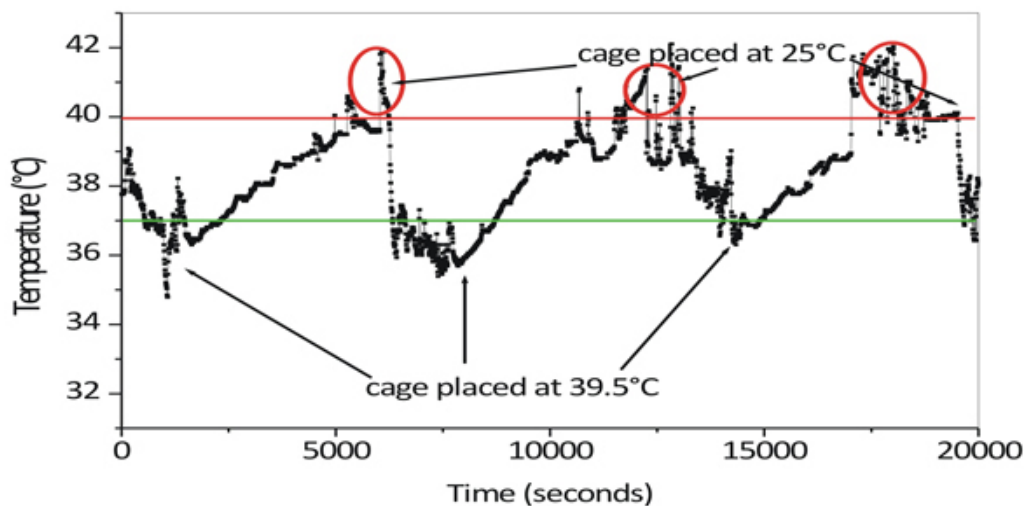


Figure 1. Variation of the core body temperature of Mice when the cage was placed in an incubator at 39.5 °C. After 90 min the cage was removed from the incubator and placed at 25 °C. Red circles indicate high temperature spikes.

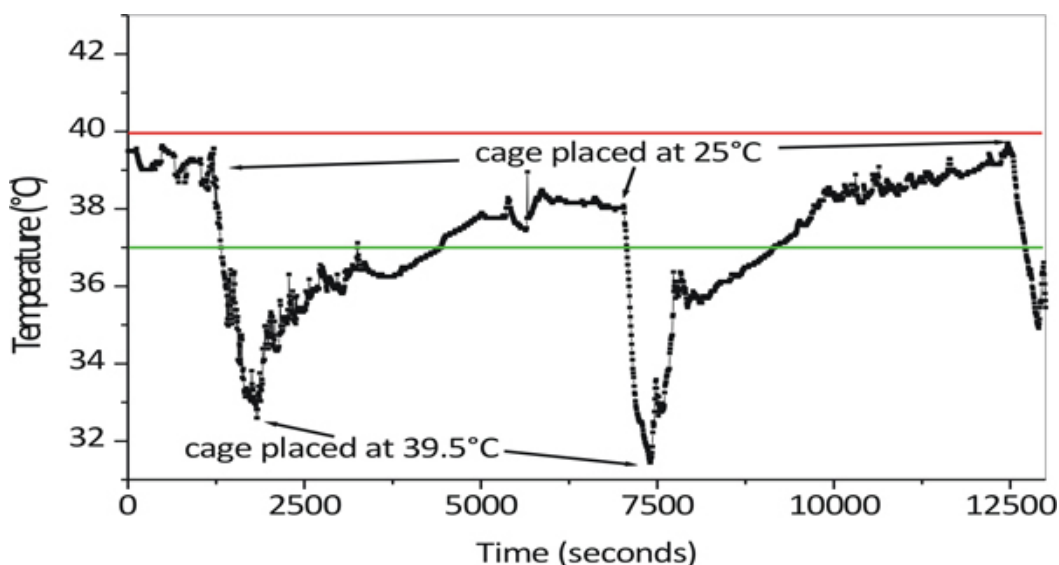


Figure 2. Variation of the core body temperature of an immobilized Mice during the hyperthermia cycles. After immobilizing the animal, high temperatures spikes were not observe when the cage was placed at 39.5 °C.

Discussion

As far back as 5,000 B.C., Egyptian doctors treated tumors with heat. The Greeks recognized the value of heat in some medical treatments. The most ancient texts of the Law of Moses mention hot springs (Genesis 36:24) to therapeutically elevate body temperature.

The earlier techniques employed either the use of pyrogenic microbial extracts for induction of fever or hot water baths for induction of hyperthermia¹. However none of these approaches could be easily monitored or controlled. In our protocol mice are exposed to hyperthermia in a controlled and reproducible manner.

In this procedure it is important to keep a watch on mice during the first two cycles of hyperthermia. In case their fur is found wet or excessive wetting observed around the snout, they should immediately be given rest and give normal saline intraperitoneally to prevent dehydration at room temperature.

After recovery, such animals may be exposed to hyperthermia again. It is interesting to observe that after 3-4 cycles of hyperthermia most mice do not become hyperactive and they actively consume water and food during the rest period.

A few clinical protocols for using artificially induced hyperthermia in cancer treatment have been developed in recent times^{4,9,11}. There are a few reports on use of hyperthermia are in relation to tumor regression^{3,5-8,12}. In a recent paper, Jia et al. have used microwave heaters for

exposing animals to short duration (30 min) whole body hyperthermia ⁵. The long duration (lasting for a few hours) whole body hyperthermia is a more challenging procedure. We have described a very simple and inexpensive protocol for long duration hyperthermia exposure. It is a very promising tool to develop a comprehensive strategy for treating cancer. With greater awareness on the simplicity and utility of hyperthermia procedure, it can become more popular among researchers and clinicians ².

Disclosures

We have nothing to disclose.

References

1. Braude, A.I., Beck, J., & Zalesky, M. Febrile response to bacterial pyrogens in leukemia. *Blood*. **16**, 1279 (1960).
2. Dovern, E., *et al.* Hyperthermic intraperitoneal chemotherapy added to the treatment of ovarian cancer. A review of achieved results and complications. *Eur. J. Gynaecol. Oncol.* **31** (3), 256 (2010).
3. Gaworek, J. & Mayer, C.T. Systemic whole body hyperthermia in oncology: fatal heat for tumor cells. *Pfluge. Z.* **56** (1), 15 (2003).
4. Hegewisch-Becker, S., *et al.* Effects of whole body hyperthermia (41.8 degrees C) on the frequency of tumor cells in the peripheral blood of patients with advanced malignancies. *Clin. Cancer Res.* **9** (6), 2079 (2003).
5. Jia, D., *et al.* Inhibition of B16 murine melanoma metastasis and enhancement of immunity by fever-range whole body hyperthermia. *Int. J. Hyperthermia.* **27** (3), 275 (2011).
6. Maluta, S., Dall'oglio, S., & Nadalini, L. Treatment for intermediate and high-risk prostate cancer: controversial issues and the role of hyperthermia. *Int. J. Hyperthermia.* **26** (8), 765 (2010).
7. Moyer, H.R. & Delman, K.A. The role of hyperthermia in optimizing tumor response to regional therapy. *Int. J. Hyperthermia.* **24** (3), 251 (2008).
8. Muthana, M., Multhoff, G., & Pockley, A.G. Tumour infiltrating host cells and their significance for hyperthermia. *Int. J. Hyperthermia.* **26** (3), 247 (2010).
9. Ostberg, J.R. & Repasky, E.A. Comparison of the effects of two different whole body hyperthermia protocols on the distribution of murine leukocyte populations. *Int. J. Hyperthermia.* **16** (1), 29 (2000).
10. Pritchard, M.T., *et al.* Protocols for simulating the thermal component of fever: preclinical and clinical experience. *Methods.* **32** (1), 54 (2004).
11. Repasky, E.A., *et al.* Characterization of mild whole-body hyperthermia protocols using human breast, ovarian, and colon tumors grown in severe combined immunodeficient mice. *Infect. Dis. Obstet. Gynecol.* **7** (1-2), 91 (1999).
12. Willnow, U., *et al.* Treatment of otherwise incurable tumor diseases in childhood using whole-body hyperthermia and chemotherapy. *Dtsch. Med. Wochenschr.* **114** (6), 208 (1989).