

A new tetraploid species of *Solanum* L. sect. *Solanum* (Solanaceae) from Tanzania

Mkabwa L. K. Manoko^{1,4}, Gerard M. van der Weerden²,
Ronald G. van den Berg³, Celestina Mariani⁴

1 Department of Botany, University of Dar es Salaam, Box 35060, Dar es Salaam, Tanzania **2** Experimental Garden and Genebank, IWWR, Radboud University Nijmegen, Toernooiveld 11, 6525 ED Nijmegen, The Netherlands **3** Biosystematics Group, Wageningen University, Radix building, Droevendaalsesteeg 1, 6708 PB Wageningen, The Netherlands **4** Department of Molecular Plant Physiology, IWWR, Radboud University Nijmegen, Huygens building, Heyendaalseweg 135, 6525 AJ Nijmegen, The Netherlands

Corresponding author: Ronald G. van den Berg (Ronald.vandenberg@wur.nl)

Academic editor: Sandra Knapp | Received 8 February 2012 | Accepted 13 August 2012 | Published 24 August 2012

Citation: Manoko MLK, van der Weerden GM, van den Berg RG, Mariani C (2012) A new tetraploid species of *Solanum* L. sect. *Solanum* (Solanaceae) from Tanzania. *PhytoKeys* 16: 65–74. doi: 10.3897/phytokeys.16.2884

Abstract

Solanum umalilaense Manoko **sp. nov.** (Solanaceae) is described from the Umalila area, in the southern highlands of Tanzania. Its novelty is supported with both morphological and AFLP data. Phenetic and phylogenetic analyses place *S. umalilaense* as a unique and well-supported taxon among tetraploid species of *Solanum* sect. *Solanum* from Africa. It can be distinguished from other African species by its extremely developed branching, each branch producing many multi-flowered inflorescences, flowers with short calyx lobes and its persistent, small, light yellowish brown fruits.

Keywords

New species, *Solanum umalilaense*, *Solanum* sect. *Solanum*, Tanzania, tetraploid, Umalila

Introduction

Solanum L. section *Solanum* is a pantropical group of about 55 species, most of which are found in the New World, and about 10 in Africa; the group forms part of the Morelloid clade of Bohs (2005). *Solanum nigrum* L. is the type species for the section, and of the genus. Species in the section *Solanum* are herbs, sometimes suf-

frutescent and occasionally small shrubs. They also have simple, unbranched, uniseriate, multicellular hairs with or without glandular heads. Their ploidy levels range from diploid to hexaploid. Species with branched or stellate hairs do not fall in this section as traditionally circumscribed (Gray 1968). In Africa, section *Solanum* species form one of the largest groups of leafy vegetables.

The most thorough account of the African species of the section *Solanum*, with good morphological descriptions and keys, was published by Edmonds and Chweya (1997). Their list of native and introduced members of the section found in Africa includes *S. americanum* Mill., *S. chenopodioides* Lam., *S. nigrum* L., *S. physalifolium* Rusby var. *nitidibaccatum* (Bitter) Edmonds, *S. retroflexum* Dunal, *S. sarrachoides* Sendtn., *S. scabrum* Mill., *S. villosum* Mill. and other taxa such as *S. florulentum* Bitter, *S. grossidentatum* A. Rich., *S. hirsutum* (Vahl) Dunal and *S. tarderemotum* Bitter, which may represent good species and need taxonomic revision. Delimitation of species based on morphological data alone is complicated by phenotypic plasticity, polyploidy, natural hybridization and discordant variation in this group (Edmonds and Chweya 1997). Jacoby (2003) and Olet (2004) studied accessions of some species of the section *Solanum* found in Africa using also a molecular approach (Amplified Fragment Length Polymorphism, AFLP). Jacoby found that 15 morphological characters reflected the genetic variation observed in the AFLP analysis, and Olet defined species of the section *Solanum* found in Uganda by using morphological characterization and AFLP on living accessions. Whereas eight species were defined by morphological characters, only five were recognized using AFLPs.

While studying accessions of *Solanum* section *Solanum* from Africa at the Radboud University Nijmegen, it became apparent that plants grown from seeds of accession A24750133 collected from the Umalila area in the southern highlands of Tanzania were strikingly different from other African accessions. Chromosome counts revealed that they had 48 chromosomes, in common with some other species of the section in Africa (Manoko 2007). The plants were temporarily designated as “species A” in Schippers (2004).

During a herbarium visit in Dar es Salaam, Tanzania, we found a specimen of the same taxon (*R.E. Gereau et al.* 5084, DSM) collected on the 14th of November 1992 from Umalila forest reserve. Duplicate specimens were present in NHT, MO and K. Annotation labels on these specimens indicated that they were identified by W.G. D’Arcy as *S. aff. americanum* Mill. and by L.B. Mwasumbi (DSM) as *S. nigrum* L.

We also located an additional specimen collected as a weed in maize field in Uyole (Mbeya) in the DSM herbarium (*A.A. Mwambunga A.A.M.6*). Fieldwork (July 2010) in Tanzania enabled us to collect a number of accessions of this species and here we formally describe it. Voucher specimens have been deposited at the Experimental Garden and Genebank herbarium of the Radboud University Nijmegen, DSM and WAG.

Taxonomic treatment

Solanum umalilaense Manoko, sp. nov.

urn:lsid:ipni.org:names:77121698-1

http://species-id.net/wiki/Solanum_umalilaense

Figs 1, 3

Diagnosis. *Solanum umalilaense* can be distinguished from other African species of *Solanum* sect. *Solanum* by its extremely developed branching, each branch producing many multi-flowered inflorescences, flowers with short calyx lobes and producing persistent, small, light yellowish brown fruits.

Type. Tanzania. Mbeya: Mbeya District, Umalila Forest Reserve, ca. 7 km W of Ruanda II on road to Izumbwe, 2 km SSE of Mbogo Mtn. main peak, 09°11'S, 33°18'E, 2180 m, on bushy south-facing slopes with scattered shrubs. 14 Nov 1992. R.E. Gereau, D.K. Harder, C.J. & M.J. Kayombo 5084 (holotype, DSM!; isotypes: K, not seen, MO, not seen, NHT!).

Description. Herb, up to ± 0.5 m, erect, predominantly with many erect or spreading branches from the base; stems dark purple, angular with well marked ridges, teeth on ridges very small, glabrescent to sub-glabrous with sparse, long, appressed, eglandular hairs. Leaf simple, petiolate, ovate to elliptic with wings running to petiole base, margins entire, apex acuminate to acute, base truncate; petiole 0.6–1.3 cm; leaf blade 1.8–2.8 \times 0.1–1.4 cm, widest 1–1.7(–2.1) cm from apex. Inflorescences numerous, up to 100 per plant, consisting of simple, rarely forked cymes, 2–9(–11) flowered; peduncle (0.5–)1.1–3.2, erect; pedicels 5–7(–9) mm, pendent. Calyx pentagonal, 3–3.2(–4) mm diam., lobes short (± 1 mm), broadly triangular, equal and adherent to mature berries; corolla stellate, 7–11 mm diam. white, margins occasionally tinged with purple, style protruding the anthers, straight or sometimes hooked with eglandular hairs at the base, 3.1–3.5(–4.2) mm; anthers equal, yellow, 1.8–2 mm, filaments 0.5–1 mm; fully hydrated pollen 24.6–26.3 μ m diam. Berries globose, changing from green to dull yellowish green, at mature stage light yellowish brown, texture soft, persistent and aromatic, 3–4(–5) mm diam.; sclerotic granules present; seeds obovate, brownish, 9 to 22 per berry. 1.6–2.1 \times 1.3–1.8 mm.

Chromosome counts on accession A24750133 using standard cytological methods and flow cytometry on root and leaf cells respectively, showed that *S. umalilaense* had 48 chromosomes ($2n=4x=48$). The same was found for related African species such as *S. florulentum*, *S. tarderemotum*, *S. hirsutum*, *S. grossidentatum* and *S. retroflexum*, indicating that all these species are tetraploid.

In phenetic and cladistic analyses of an AFLP (Vos et al. 1995) dataset of the tetraploid species from Africa, including *S. villosum*, *S. retroflexum*, *S. florulentum*, *S. tarderemotum*, *S. grossidentatum* and *S. hirsutum*, *S. umalilaense* had 100% jack-knife support in the neighbour joining and maximum parsimony analyses (Manoko



Figure 1. Holotype specimen of *Solanum umalilaense* Manoko sp. nov. (DSM)

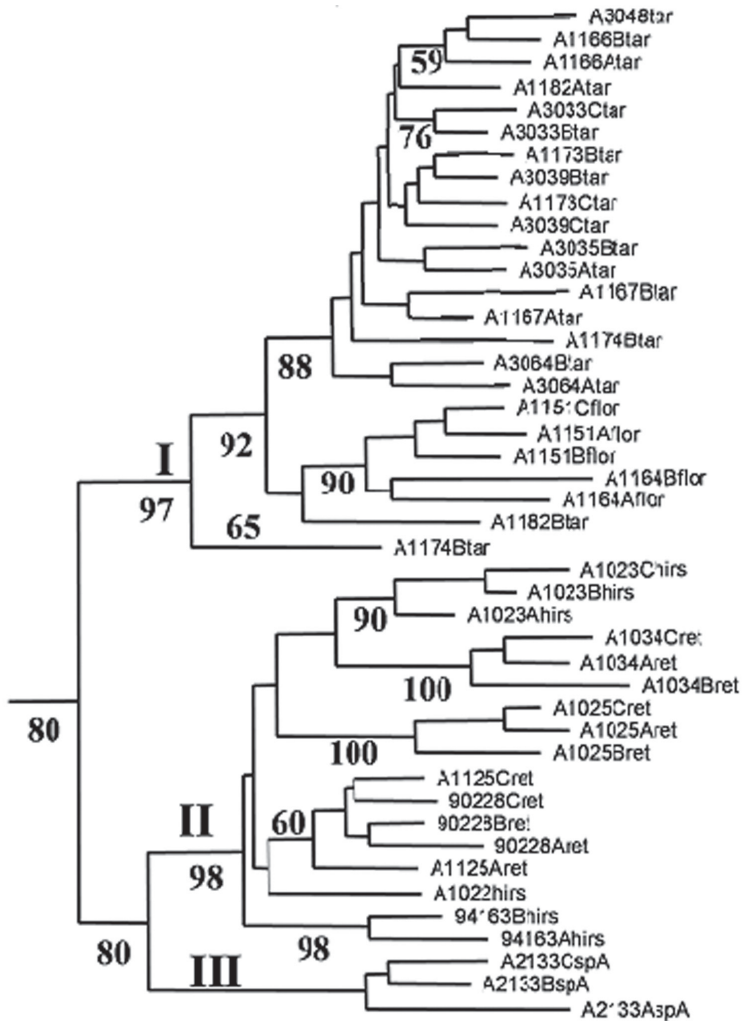


Figure 2. Part of the NJ tree from Manoko (2007). Numbers at the nodes are NJ Jackknife support values. Cluster I contains *S. tarderemotum* and *S. florulentum*. In cluster II are *S. retroflexum* and *S. hirsutum*. Cluster III is composed of individuals of *S. umalilaense*

2007). A NJ tree was constructed using 435 polymorphic AFLP loci generated from 102 tetraploid individuals. Here only results for 44 individuals are shown, representing about 50% of the tree (Fig. 2; Manoko 2007), with *S. umalilaense* indicated as “sp A”. Cluster I was made up of individuals morphologically similar but not identical (Manoko 2007). Part of the material conformed to *S. tarderemotum* forms A and B described by Olet (2004), and two remaining accessions were *S. florulentum*. Individuals that conformed to *S. tarderemotum* forms A and B in this cluster shared morphological characteristics not only with *S. florulentum*, but also with *S. tarderemotum* form C. Cluster II was composed of *S. retroflexum* and a taxon that we identified as *S.*



A



B



C



D



E



F



G



H

Figure 3. Pictures A,B,C,D taken from plants grown at the Experimental Garden, Radboud University Nijmegen (A24750133). Pictures E,F,G,H taken from plants growing in Mbeya region, Tanzania (E,F: Manoko et al. 2010-2; G,H: Manoko et al. 2010–14).

hirsutum (Manoko 2007). Both taxa have ovate calyx lobes, covering only half of the fruit during development, but reflexed away from mature fruits. The globose fruits, turning from green to purple/black, remain with the pedicel on the plant and are not aromatic. Cluster III is composed only of individuals of accession A24750133, which we describe here as the new species *S. umalilaense* (Fig. 2).

Distribution. Mbeya region, Tanzania, at elevations between 1952 and 2052 m (Fig. 4).

Ecology. During our collecting trip in the Umalila area (July 7–10, 2010) we found many plants in cultivated fields (Fig. 3E,F) on the slope of mountains, or left in abandoned cultivated plots (Fig. 3H), which also contained maize and beans.

According to the information on *Gereau et al. 5084* the species is frequent on the ash layer in charcoal-burning areas. The Umalila area is located in the Mbeya region, in the South West of Tanzania at the border with Malawi and Zambia (Figure 3). Because of its elevation, the region is also known as the Southern Highlands of Tanzania, with volcanic type of soil, temperatures ranging from 12 to 23°C, and annual rainfall levels from 1500 to 2700 mm. The vegetation is mountainous, with cool temperature grasslands and the region is good for cultivation of coffee, maize, beans and vegetables (Anon. 1997).

Etymology. The name *S. umalilaense* refers to the area the species was found. Umalila (Malila or Umalila) is the highland area of the Malila, a relatively unknown ethnic group in south-west Tanzania (Walsh 1998).

Conservation status. Based on the information on the type specimen, *S. umalilaense* grows in the Umalila forest reserve. We visited the villages of Maganjo, Isangati, Igala, and different wards and found that the species was cultivated as an important and well known leafy vegetable. It has been cultivated for many generations and farmers collect fruits and keep dried seeds for the next growing season. Since this species is cultivated as a food crop and has become almost domesticated, its preliminary conservation status can be considered to be of Least Concern (LC, IUCN 2001) although its very narrow distribution may be cause for further analysis.

Local names. Insungwe, so called by the Malila (Schippers 2004).

Uses. Used as a leafy vegetable. Leaves can be picked from the plant until the plant starts flowering. Using leaves when the plant is in flower is not attractive because of their bitter taste (Latham 2006).

Specimens examined. Tanzania. Mbeya Rural District: Maganjo village (Lwindi ward), 09°02'29"S, 033°23'54"E, July 8, 2010, *Manoko et al. 2010–11* (DSM, WAG, and Radboud University Experimental Garden and Genebank herbarium); Isangati village (Iyunga ward), 09°04'12"S, 033°25'25"E, July 8, 2010, *Manoko et al. 2010–2* (DSM, WAG, and Radboud University Experimental Garden and Genebank herbarium); Igala village (Holondo ward), 09°03'21"S, 033°26'44"E, July 8, 2010, *Manoko et al. 2010–8* (DSM, WAG, Radboud University Experimental Garden and Genebank herbarium); Isangati village (Iyunga Mapinduzi ward), 09°05'03"S, 033°25'53"E, July 9, 2010, *Manoko et al. 2010–11* (DSM, WAG, Radboud University Experimental Garden and Genebank herbarium); Isangati village (Iyunga Mapinduzi ward), 09°05'03"S, 033°25'53"E, July 9, 2010, *Manoko et al. 2010–12* (DSM, WAG, Radboud University Experimental



Base 802932AI (C00485) 3-03

Figure 4. Map courtesy of the University of Texas Libraries, The University of Texas at Austin.

Garden and Genebank herbarium); field plot near Umalila Forest reserve, 09°11'26"S, 033°20'46"E, July 9, 2010, *Manoko et al. 2010–14* (DSM, WAG, Radboud University Experimental Garden and Genebank herbarium); Uyole (Mbeya), 5500 ft, 22 May 1968, *A.A. Mwambunga A.A.M.6* (DSM). **The Netherlands.** Accession A24750133 from the Umalila area cultivated at Radboud University Experimental Garden and Genebank, *Anon. s.n.* (Radboud University Experimental Garden and Genebank herbarium).

Discussion. *Solanum umalilaense* differs from all other species that have been described or studied so far from Africa (Bitter 1912; 1913; Bukenya and Hall 1988; D'

Arcy and Rakotozafy 1994; Edmonds and Chweya, 1997; Bosser et al. 2000; Jacoby 2003; Olet 2004; Gonçalves 2005; Edmonds 2006 a, b). The new species produces a large number of inflorescences such that at full anthesis the plant appears to be covered with white flowers, strikingly different from other species in the section. Seeds of “species A”, as it was provisionally labeled, were received from the Southern Highlands of Tanzania where this taxon is a common leafy vegetable. Morphologically, it could not be assigned to any known species, therefore Schippers (2004) had given it the name species A. Herbaria surveys at NHT and DSM in Tanzania produced comparable material, all collected from Umalila Forest Reserve in Mbeya by R.E. Gereau et al. in 1992 (*R.E. Gereau, D.K. Harder, C.J. & M.J. Kayombo 5084*, the DSM specimen of which we designate as holotype). They had found these plants ‘frequent on ash, in charcoal-burning area’. During our collection-trip in Tanzania in the same region, however, we always found this species in cultivated plots, never in ash. Gereau’s material had been first determined by the late W.G. D’Arcy (MO) in 1993 as *S. aff. americanum* Mill. Later, L.B. Mwaumbi (DSM) changed the name to *S. nigrum* L. These names refer to a diploid and to a hexaploid species, respectively, whereas *S. umalilaense* is tetraploid. This clearly demonstrates that the suggested affinities with *S. americanum* and *S. nigrum* were not correct.

Edmonds’s opinion (JM Edmonds pers. comm.) that it might be a hybrid between two tetraploid species was investigated. We found that for the three generations we grew the plants (between 2002–2004) none of the characters showed segregation.

All together, the distinct morphology, chromosome number different from *S. americanum* and *S. nigrum*, and a clear separate clustering from other species of the section, make this African species unique in section *Solanum* in Africa.

Acknowledgements

We thank the support of Nuffic, through the MHO-ENVIRONS program, COSTECH for permission to perform field work in the Mbeya region, the Faculty of Science of the Radboud University Nijmegen and the National Herbarium of the Netherlands for funding this study. We also wish to extend our thanks to the staff at the Radboud University Experimental Garden and Genebank for looking after the plants, and to Dr. E. Pierson for her assistance during seed and pollen measurements. We thank the reviewers of this paper for critical comments, specially reviewer 2 for adding new information regarding section *Solanum*.

References

- Anonymous (1997) Mbeya District socio-economic profile. Joint publication by The Planning Commission Dar es Salaam and Mbeya District Council, Mbeya, Mbeya District. <http://www.tzonline.org/pdf/Mbeyadis.pdf>
- Bitter G (1912) *Solana nova vel minus cognita*. I. Repert. Spec. Nov. Regni. Veg. 10: 529–565.

- Bitter G (1913) *Solana Africana*. I. Bot. Jahrb. Syst. 49(5): 560–569.
- Bosser J, Cadet T, Gueho J, Marais W (2000) *Flore des Mascareignes: La Réunion, Maurice and Rodrigues*. The Royal Botanical Gardens, Kew.
- Bohs L. (2005) Major clades in *Solanum* based on *ndbF* sequence data. Pages 27–49 In: Keating RC, Hollowell VC, Croat TB (Eds) *A festschrift for William G. D'Arcy: the legacy of a taxonomist*. Monographs in Systematic Botany from the Missouri Botanical Garden, Vol. 104. Missouri Botanical Garden Press, St. Louis, MO.
- Bukenya ZR, Hall JB (1988) *Solanum* (Solanaceae) in Ghana. *Bothalia* 18: 79–88.
- D'Arcy WG, Rakotozafy A (1994) Famille 176. Solanaceae. In: Morat P (Ed) *Flore de Madagascar et des Comores*. Museum Nationale d'Histoire Naturelle, Paris.
- Edmonds JM (2006a) *Solanum* L. section *Solanum*. In: Thulin M (Ed) *Flora Somalia*, Vol.3, Royal Botanic Gardens, Kew, 207–208.
- Edmonds JM (2006b) *Solanum* L. section *Solanum*. In: Hedberg I, Edwards S (Eds) *Flora of Ethiopia and Eritrea* 5: 13–21.
- Edmonds JM, Chweya JA (1997) Black nightshades. *Solanum nigrum* L. and related species. Institute of Plant Genetics and Crop Plant Research Gatersleben / International Plant Genetic Resources Institute, Rome, Italy, 5–113.
- Gonçalves AE (2005) Solanaceae. In: Pope GV, Polhill RM, Martin ES (Eds) *Flora Zambesiaca*, Royal Botanic Gardens, Kew, 8 (4).
- Gray JM (1968) The taxonomy of the *Morella* section of the genus *Solanum* L. within South America. PhD thesis, University of Birmingham, Birmingham, U.K.
- IUCN Species Survival Commission (2001) *IUCN Red List Categories: Version 3.1*. IUCN Gland and Cambridge.
- Jacoby A (2003) Genetic variability in the *Solanum nigrum* L. complex and related species in South Africa. PhD thesis, University of Free State Bloemfontein, South Africa.
- Latham P (2006) *Plants visited by bees and other useful plants of Umalila, Southern Tanzania*. Third edition, 174.
- Manoko MLK (2007) A systematic study of African *Solanum* section *Solanum* (Solanaceae). PhD thesis, Radboud University Nijmegen. <http://dare.ubn.kun.nl/bitstream/2066/30032/1/30032.pdf>
- Olet EA (2004) Taxonomy of *Solanum* L. section *Solanum* in Uganda. PhD thesis, Agricultural University of Norway.
- Schippers RR (2004) *Légumes Africains Indigènes: présentation des espèces cultivées*. Margraf Publishers GmbH, Scientific books, Weikersheim, 369–407.
- Vos P, Hogers R, Bleeker M, Reijans M, van der Lee T, Hornes M, Frijters A, Pot J, Peleman J, Kuiper M, Zabeau M (1995) AFLP: a new technique for DNA fingerprinting. *Nucl. Acids Res.* 23: 4407–4414. doi: 10.1093/nar/23.21.4407
- Walsh M (1998) The Malila: Preliminary notes on language, history and ethnography. Unpublished paper. <http://www.scribd.com/doc/14539285/The-Malila-Preliminary-Notes-on-language-History-and-Ethnography>