

MetaSee: An Interactive and Extendable Visualization Toolbox for Metagenomic Sample Analysis and Comparison

Baoxing Song¹, Xiaoquan Su¹, Jian Xu^{1,2,3}, Kang Ning^{1,2,3*}

1 BioEnergy Genome Center, Qingdao Institute of Bioenergy and Bioprocess Technology, Chinese Academy of Sciences, Qingdao, Shandong Province, People's Republic of China, **2** Shandong Key Laboratory of Energy Genetics, Qingdao Institute of Bioenergy and Bioprocess Technology, Chinese Academy of Sciences, Qingdao, Shandong Province, People's Republic of China, **3** CAS Key Laboratory of Biofuels, Qingdao Institute of Bioenergy and Bioprocess Technology, Chinese Academy of Sciences, Qingdao, Shandong Province, People's Republic of China

Abstract

The NGS (next generation sequencing)-based metagenomic data analysis is becoming the mainstream for the study of microbial communities. Faced with a large amount of data in metagenomic research, effective data visualization is important for scientists to effectively explore, interpret and manipulate such rich information. The visualization of the metagenomic data, especially multi-sample data, is one of the most critical challenges. The different data sample sources, sequencing approaches and heterogeneous data formats make robust and seamless data visualization difficult. Moreover, researchers have different focuses on metagenomic studies: taxonomical or functional, sample-centric or genome-centric, single sample or multiple samples, etc. However, current efforts in metagenomic data visualization cannot fulfill all of these needs, and it is extremely hard to organize all of these visualization effects in a systematic manner. An extendable, interactive visualization tool would be the method of choice to fulfill all of these visualization needs. In this paper, we have present MetaSee, an extendable toolbox that facilitates the interactive visualization of metagenomic samples of interests. The main components of MetaSee include: (I) a core visualization engine that is composed of different views for comparison of multiple samples: Global view, Phylogenetic view, Sample view and Taxa view, as well as link-out for more in-depth analysis; (II) front-end user interface with real metagenomic models that connect to the above core visualization engine and (III) open-source portal for the development of plug-ins for MetaSee. This integrative visualization tool not only provides the visualization effects, but also enables researchers to perform in-depth analysis of the metagenomic samples of interests. Moreover, its open-source portal allows for the design of plug-ins for MetaSee, which would facilitate the development of any additional visualization effects.

Citation: Song B, Su X, Xu J, Ning K (2012) MetaSee: An Interactive and Extendable Visualization Toolbox for Metagenomic Sample Analysis and Comparison. PLoS ONE 7(11): e48998. doi:10.1371/journal.pone.0048998

Editor: Jonathan H. Badger, J. Craig Venter Institute, United States of America

Received: April 26, 2012; **Accepted:** October 3, 2012; **Published:** November 8, 2012

Copyright: © 2012 Song et al. This is an open-access article distributed under the terms of the Creative Commons Attribution License, which permits unrestricted use, distribution, and reproduction in any medium, provided the original author and source are credited.

Funding: This work is partly supported by Chinese Academy of Sciences' e-Science grant INFO-115-D01-Z006, Ministry of Science and Technology's high-tech (863) grant 2009AA02Z310, and Natural Science Foundation of China grant 61103167. The funders had no role in study design, data collection and analysis, decision to publish, or preparation of the manuscript.

Competing Interests: The authors have declared that no competing interests exist.

* E-mail: albertnk@gmail.com

Introduction

Microbes are everywhere around us on the planet, and the total number of microbial cells on earth is huge [1]. Microbes usually live in communities, and each of these communities has different community structures and functions. As such, microbial communities would serve as the largest reservoir of genes and genetic functions for a large number of applications in bio-related disciplines, including biomedicine in healthcare, bioenergy, bioremediation and biodefense [2]. Since more than 90% of strains found in the microbial communities cannot be isolated and cultivated [3], metagenomic methods have been used to analyze the microbial community as a whole.

1 The Importance and Challenges in Metagenomic Data Analysis

Understanding the taxonomical structure of a microbial community (alpha diversity) and the differences in taxon among

microbial communities (beta diversity) have been two of the most important problems in metagenomic research [4,5]. For alpha diversity, questions regarding the relative abundance of different taxa across multiple levels are the focuses of research. Beta diversity focuses on the comparison of community structures of different microbial communities, which is especially important to find the complex relationships among a large number of samples. Understanding the beta diversity is critical for studying microbial ecology. For example, Human Microbiome Projects [6] and related efforts to study microbial communities occupying various human body habitats have shown a surprising amount of diversities among individuals in skin [7,8], gut [9], and mouth ecosystems [10,11].

Advances in sequencing technologies have equipped researchers with the ability to sequence collective genomes of entire microbial communities, commonly referred to as metagenome, in an inexpensive and high-throughput manner [12]. Thus, a rapidly increasing number of metagenomic profiles of microbial commu-

nities have been archived in public repositories and research labs around the world. Mining these data would be important for the revealing of the intricate relationship among samples. Therefore, it is becoming more and more important to compare microbial communities in large scale.

2 The Needs of a Platform for Interactive Visualization of Metagenomic Samples

Extensive collaborations between microbiologists and bioinformaticians are needed for large-scale metagenomic data analysis & interpretation. To facilitate their collaboration, an easy to use and cross-platform system for interactive visualization of metagenome is urgently needed.

Firstly, although many metagenomic data analysis tasks can be accomplished with automated processes, some steps continue to require human judgments and are frequently rate limiting, for example the comparison between two or more samples. Visualization can augment our ability to reason about complex data, and increase the efficiency of manual analyses. Given the importance of human interpretation, visualization tools also provide a valuable complement to automated computational techniques, particularly in the early hypothesis generation stages of biological research, enabling us to derive scientific insight from large-scale data sets [13]. An effective method of visualization should display the data in such a way that the answers to common questions become obvious [14].

Secondly, researchers need high-quality figures to facilitate their in-depth analysis and interpretation of their work. And it is important for software designers continue providing scientists with tools that are useful, effective and illustrative [15].

Finally, current metagenomic research is becoming a multi-region, multi-discipline and multi-expertise collaboration effort, with many researchers working on microbiology-related energy, medicine, environment, etc. The common theme for these researches is that the data are produced around the world but analyzed in a data analysis center. As such, the need for a cross-platform visualization toolbox to serve such collaborations is becoming more and more urgent.

3 Representing Metagenomic Data from Different Angles are Beyond the Ability of Current Stand-alone Visualization Tools

Metagenomic samples are usually presented in a kind of diverse hierarchy, for which there are only a few of visualization tools designed. In addition, they need to be examined from different angles and levels: phylogeny information, taxonomical structure and functional structure. However, current visualization tools are limited by their abilities to show only one or two angles for the metagenomic taxonomical samples of interests.

Current metagenomic visualization tools could be categorized as independent or dependent (as a component in comprehensive software) by their dependencies on other software, or as open-source or closed-source by their software distribution strategy.

Based on the NCBI Taxonomy database, MEGAN [16] could display the components of taxonomy of one or more metagenomic samples (**Figure 1(A)**), whereas it is not an open source or independent application so its visualization part could not be easily imported into other applications.

Strainer [17] (**Figure 1(B)**) and BLASTatlas [18] (**Figure 1(C)**) could display and compare genome structures and annotations in the form of micro- and macro- genomic views separately. But these perspectives are limited in comparison between two genomes or between genomes and metagenomes,

which can't provide the comparison of multiple metagenomic samples.

IMG/M [19] has a visualization tool developed by DOE Joint Genome Institute aimed to compare metagenomes. While IMG/M performs very well at multiple levels, including functional annotation, classification, etc., it can only provide visualization effect for contigs and its annotations are from a single metagenomic sample (**Figure 1(D)**). Other information, such as the comparison of community structures among multiple metagenomes, is provided as simple tables. Therefore, in IMG/M, much of the important information (e.g. comparison among multiple metagenomic samples) is missing in visualized results.

Krona [14] (**Figure 1(E)**) is another metagenomic visualization tool. It allows hierarchical data to be explored with zoom-able pie charts and it is good at displaying the structure of single samples. Although Krona can display multiple samples, it could only display one sample in a window at a time. So it is non-intuitive to find the difference between/among multiple samples at specific taxa.

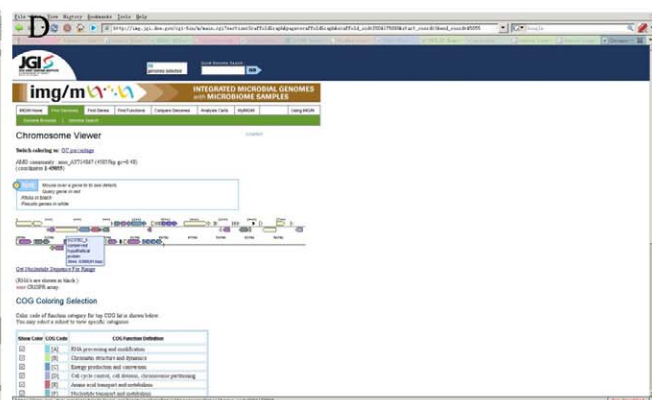
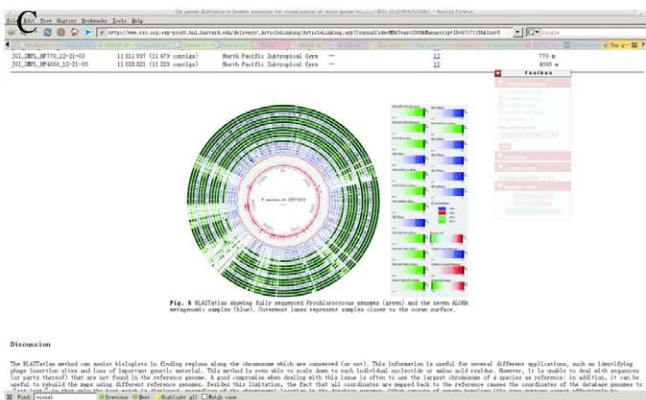
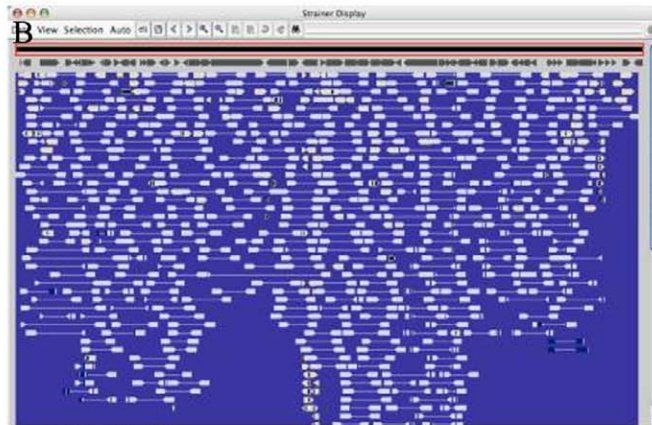
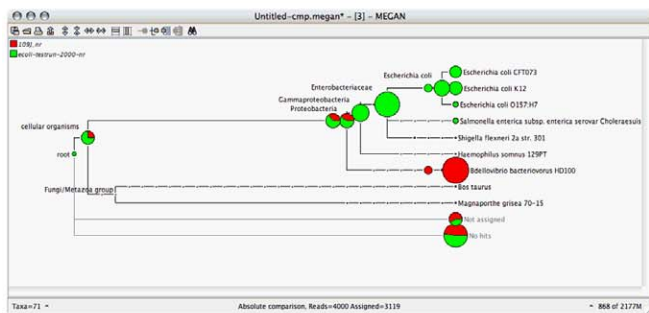
iTOL [20] can provide a global view for multiple metagenome samples (**Figure 1(F)**), but it needs a dataset file, which is not generated by iTOL but has to be written manually. Furthermore, iTOL is not open source and there was also no binary files provided for offline use.

There are several other visualization tools for metagenomic sample visualization [21,22]. But generally, various levels of granularities inherent in these classifications and multiple samples pose challenges for visualization. Tree-structure diagrams can be used to convey hierarchy [23], and bar or pie charts can display the relative abundances at specific levels, but neither of these methods alone creates a complete figure for metagenomic analysis. Additionally, taxonomic and functional hierarchies are often too complex for all nodes to be shown. Furthermore, there are substantial biological variations among different metagenomes and specific shifts in time series, which are beyond the ability of currently available open source visualization tools.

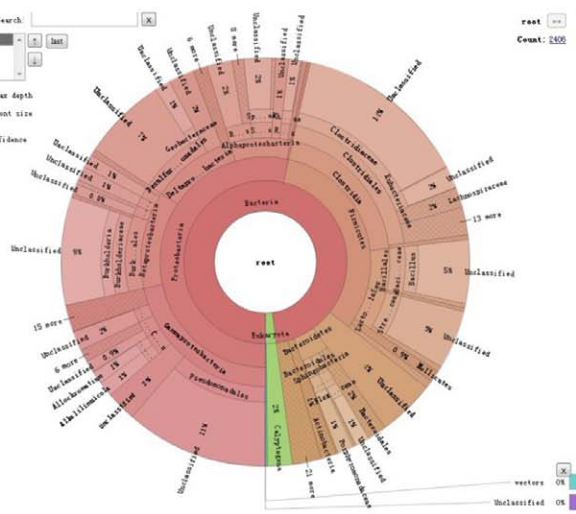
The foundation of most metagenomic studies is the assignment of observed nucleic acids to taxonomic or functional hierarchies [24,25]. Metagenomic classification algorithms are constantly improving, but their results still come with a significant degree of uncertainty. Only a small fraction of the tree of life is represented in reference databases, and this causes widespread bias in classification [26]. But, apart from Krona [14], other visualization tools would only provide non-comprehensive information about which part was classified, or at which level reads were classified. Therefore, currently, there is not an open-source or independent tool that could provide visualization solution that includes: (1) The phylogenetic information of the metagenomic samples, (2) The illustrative comparison of multiple metagenomic samples by their microbial community structures and functions, (3) Details about how precisely each branch was classified and at which level each node (taxa) is. Though MEGAN [16] could provide most of the above functions; it is mostly closed-source, making it almost impossible to include the visualization part of MEGAN [16] into other applications or online services.

It should be noticed that some of the visualization effects required by users could not be easily realized on a single interface clearly. For example, it would not be clear to have multiple metagenome comparison results placed in the same page. For such visualization effects, a substantial integration and interactive visualization tools might be the method of choice.

A



E



F

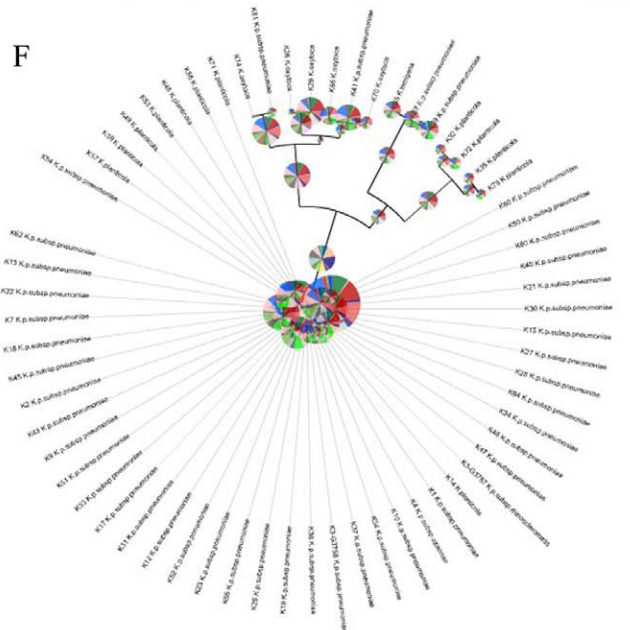


Figure 1. Screenshot of current metagenomic visualization effects. (A) The visualization result of MEGAN with taxonomy components of two metagenomic samples. (B) The visualization user interface of Strainer (The visualization of components of metagenomics in micro-perspective). The comparison between a component of a metagenome sample and a genome. (C) The visualization user interface of BLASTatla (The visualization of components of metagenomics in macro-perspective: The comparison among a component of metagenome and multiple genomes). (D) Contig and gene annotation visualization of IMG/M. (E) The visualization user interface of Krona. This is the user interface of comparison of four saliva microbiomes. (F) The metagenome visualization result of iTOL with default parameters.
doi:10.1371/journal.pone.0048998.g001

4 Our Approach – MetaSee, an Interactive Metagenomic Viewer

In this work, we have developed an integrative visualization system, MetaSee, based on most advanced computer visualization techniques. The MetaSee system is composed of (1) the core visualization engine, (2) the front-end interactive analysis interface, and (3) the API portal for plugin development.

(1) The core visualization engine includes: visualization of the taxonomical structure of the metagenomic samples globally and at different levels, comparison of different metagenomic samples and link-out to different annotations for the taxa and/or functions, etc. (2) The front-end user interface is specifically designed for real metagenomic models (such as the oral microbial community models) that connect to the above core visualization engine. And (3) the open-source API portal for the development of plug-in is designed for easy-extension of the MetaSee system.

Methods and Implementations

MetaSee is implemented based on all of the taxonomical and functional information that could be retrieved from metagenomic samples, and takes advantage of modern computer visualization technology, including HTML5 canvas, JavaScript, SVG and modern web browsers. The only requirement for viewing the result of MetaSee is an updated web browser, and the results can be viewed (online or off-line) on almost all operating systems (OS) with Graphical User Interface (GUI).

1 High-performance Computational Backbone

Visualization tools are particularly powerful when used in combination with high-throughput automated analysis software (e.g., Parallel-META [27,28]). Features, such as easy-to-use, cross OS platform and open source of MetaSee, make it easy to build this visualization tool in high-throughput automated analysis pipelines. In this work, we have used Parallel-META [27,28] to analyze the metagenomic data, and the interactive visualization effects were built based on these results.

2 The Core Visualization Engine

The core visualization engine is composed of multiple viewing components: the viewing components include (not exclusive of each other): overall framework (**Figure 2(A)**), MetaSee visualization panel (**Figure 2(B)**), Global view (**Figure 2(C)**), Taxa view (**Figure 2(D)**), Phylogenetic view (**Figure 2(E)**), Phylogenetic file (**Figure 2(F)**), Link out annotations (**Figure 2(G)**) and Sample view (**Figure 2(H)**). These components are capable of providing GUI for visualization of uploaded files, and aim to answer questions regarding the relative abundance of taxa across multiple levels of the hierarchy for multiple samples simultaneously.

(1) **Framework (Figure 3)**. The framework includes the left sidebar (**Figure 3(A)**) and the main window (**Figure 3(B)**). The left sidebar is the navigation bar for visualization results, which can be flipped on and off. The main window is the working area and all the views will be displayed in this area.

(2) **MetaSee visualization panel (Figure 2(B))**. The MetaSee visualization panel is the main interactive operation panel of MetaSee, which is designed for interactive analysis of the structure of metagenome. This panel is a pie chart, and when a sector (representing a taxa) of it is selected, the area will be highlighted and turn to the right. The right side bar of MetaSee visualization panel will display the detailed information of this node and links to other views. The lengths of layers of these charts indicate which part of this dataset was classified more precisely. And the color of

each sector indicates the abundance of this sector (taxa) (red color indicates more abundant taxa).

(3) **Global view (Figure 2(C))**. For each sample, a Global view is a hierarchical tree that contains every taxa and their proportion in the sample. Two or more samples can be shown in a single Global view, with each node composed of a bar-plot showing the relative abundance of different samples at those taxa. Thus, Global view shows the whole picture of all samples being compared. In Global view, all the taxonomy units at the same level are in the same rank, so it is easy to find which part of the input dataset was enriched (classified with more details). The heights of each pillar stand for the relative abundance of each sample at this taxonomy unit. The detail information of a certain taxonomy unit is linked from small bar chart to their Taxa view (a pair of pie-charts and a pair of bar-charts) with relative abundance, absolutely abundance and legend. In Global view each color indicates a sample (as indicated in figure legend), and it is convenient to find the difference among multiple samples at the global level of a certain taxonomy unit.

(4) **Taxa view (Figure 2(D))**. For one or a set of samples, the Taxa view focuses on the detail information of one node (taxa) in Global view, a taxonomical hierarchy tree structure (by clicking the bar-plot for that node). This detailed information includes the abundance information at the specific taxa, which is useful for comparing different samples for specific taxa. It can be shown in either pie-chart or bar-chart format.

(5) **Phylogenetic view (Figure 2(E))**. For each sample, a Phylogenetic view is an unweighted phylogenetic tree. It elucidates the evolutionary relationship of all microbes in a microbiome community.

(6) **Phylogenetic tree file (Figure 2(F))**. Unweighted phylogenetic tree file is presented in Newick format. It can also be imported into other phylogenetic tree visualization tool (e.g. Phylogenetic tree Maker (<http://www.metasee.org/visualizationlab/phylogenetictrees.jsp>)).

(7) **Sample view (Figure 2(H))**. For each sample, the taxonomical community structure is represented in a dynamic multi-layer pie-chart, so that each taxon's (at each level) proportion can be vividly seen by interactively zoomed-in or zoomed-out. Moreover, pie-charts for multi-samples can be smoothly shifted from one to another for comparison of structure and proportion. The sample view is implemented by the Krona software [14]. The Sample view can also be viewed directly or linked from the Global view (by clicking the legend box at the up-right corner).

(8) **Link-out annotation (Figure 2(G))**. Each of the taxa or function could be linked-out to their annotation from external sources from MetaSee visualization panel, Global view (by clicking the name of that node), Sample view or Taxa view. Here we use the taxonomy browser database of NCBI [29] as external link-out annotation source, which would facilitate digging the detailed information of a certain taxa and speeding up the manual analysis process.

3 Multi-sample Comparisons

Metagenomic data are often generated at discrete points across multiple locations or times. MetaSee is able to store the data from multiple samples in a single framework. Individual samples may then be stepped through. Thus, it makes the comparison among samples coming from different time points or conditions easy (**Figure 4**). In Global view (**Figure 4(A)**), the bars with the same color come from the same sample, and the height of each pillar represents the relative abundance of corresponding samples at corresponding nodes (taxa). Taxa view (**Figure 4(B)**) and

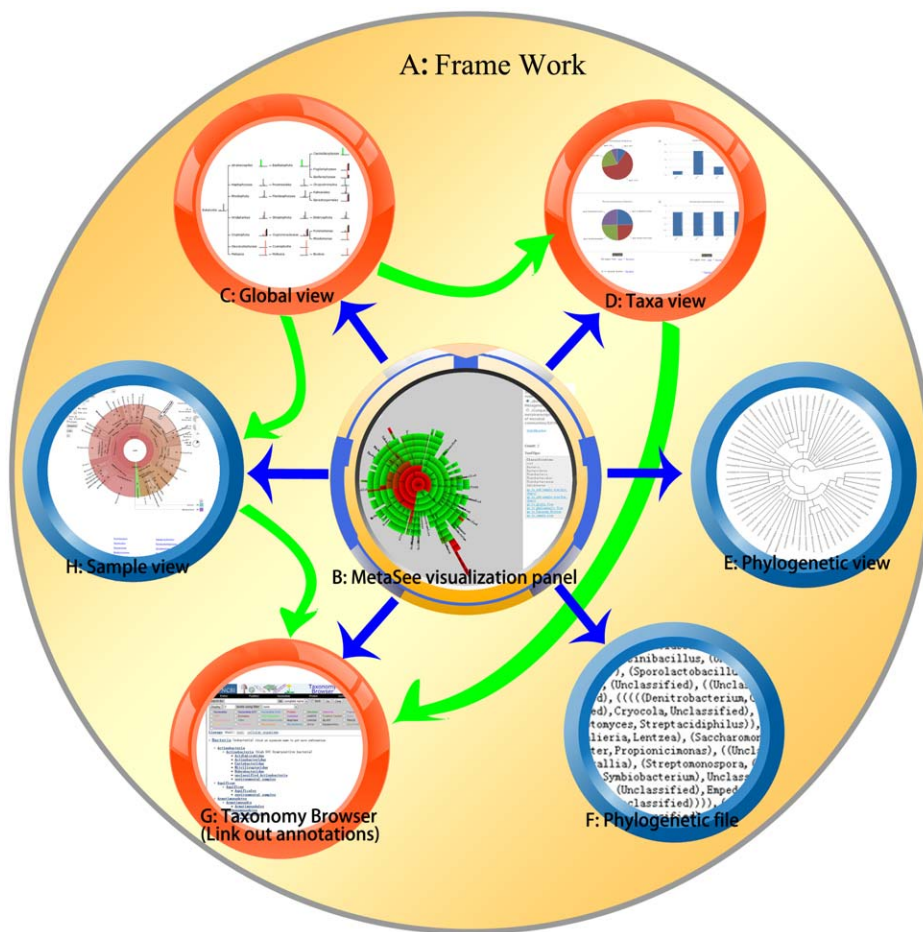


Figure 2. Overview of the components of MetaSee. Each pie stands for an element of MetaSee, and directed arrow stand for a front-end link from one component to another component.
doi:10.1371/journal.pone.0048998.g002

Figure 4(C) includes a pie-chart and a bar-chart for each node, and both pie chart and bar chart have two graphs to represent the relative abundance and absolute number, respectively. In addition to these visualization functions, to provide high quality graph for publication purpose, all the graphs produced by MetaSee are vector graphs.

4 The Front-end Interactive Analysis Interface

The front-end interface mainly serves for a set of real metagenome projects based on MetaSee visualization system. Two areas may need this metagenomic visualization system: dentistry and field experimental studies. For dentists, this system would help them for quick diagnosis by using the novel samples that have been collected as queries to search in the database of known samples of microbial communities. This has been proven to be workable for dentists so far [11]. For field study experts such as those on ocean expeditions or doing soil sample testing, this tool would help them to analyze their data quickly and get illustrative results easily. For these two areas, we have designed two interfaces, “Digital mouth” and “Metagenome global survey”, as examples of front-end.

5 Open-source Portals for Plug-in Development

Open-source portals were designed to extend the usability of the MetaSee visualization system. Firstly, community structure files in

many formats can be imported into MetaSee. As XML is easy to expand, it was selected as the default format. Yet, during run time, community structure files in many formats could be stored in random access memory (RAM) as double linked trees, by an independent component for tree building. Based on this design model, it is very easy to develop other APIs for new input file formats. As examples, we developed APIs for importing output files from parallel-META [27,28], MEGAN [16] and MG-RAST [22]. And other APIs for input data manipulations are under development.

Secondly, the work flow of MetaSee could build a tree structure and then output this tree to a variety of views. Therefore, adding new APIs for other views (such as back-to-back sample views) or modifying existing views would be facilitated.

Thirdly, the search function of the MetaSee toolbox (<http://www.metasee.org/visualizationlab/search/>) provided a portal for searching any metagenomic samples against a metagenome database. Right now only samples from “Metagenome global survey” could be searched against a pre-built database of annotated metagenomic samples (just to show-case its functions). Yet this open-source portal could facilitate the re-development of search functions to search any user-specified metagenomic sample against any metagenome database.

Finally, we have established a repository (<http://www.metasee.org/tools.jsp> and <http://www.metasee.org/laboratory.jsp>) to provide more viewing options and more viewing services. Other APIs,

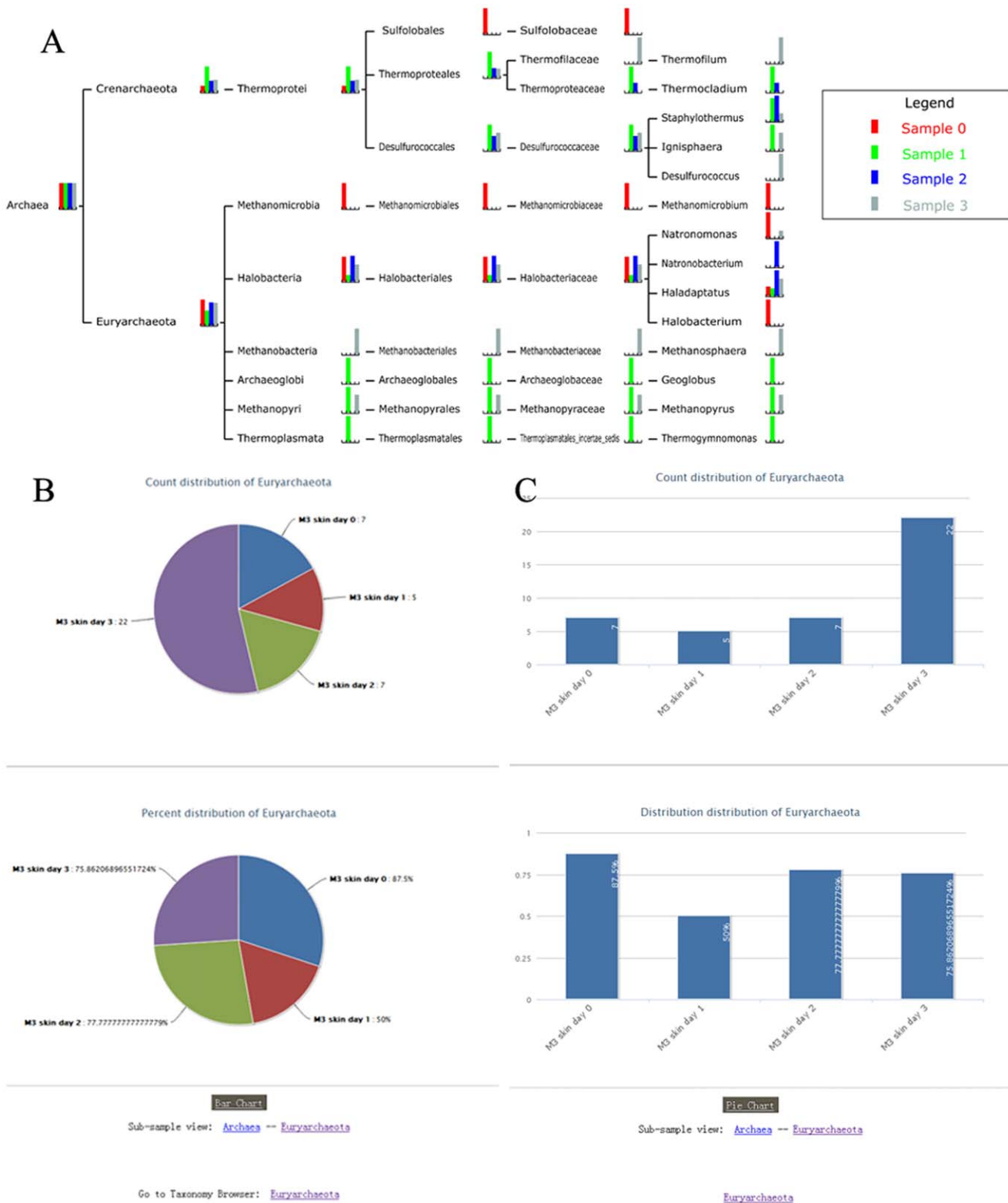


Figure 4. Comparison across multiple samples. (A) Global view, (B) Taxa view with pie-chart format, (C) Taxa view with bar-chart format. doi:10.1371/journal.pone.0048998.g004

among multiple metagenomic samples in simple tabular format. Krona [14] is not good at visualization of multiple samples. Producing a multi-sample metagenomic image with iTOL [20] is difficult because there is no supporting API. MEGAN [16,33] has

most of the visualization functions as described above, but it is not an open-source visualization tools. Details about these comparisons can be found in Text S1.

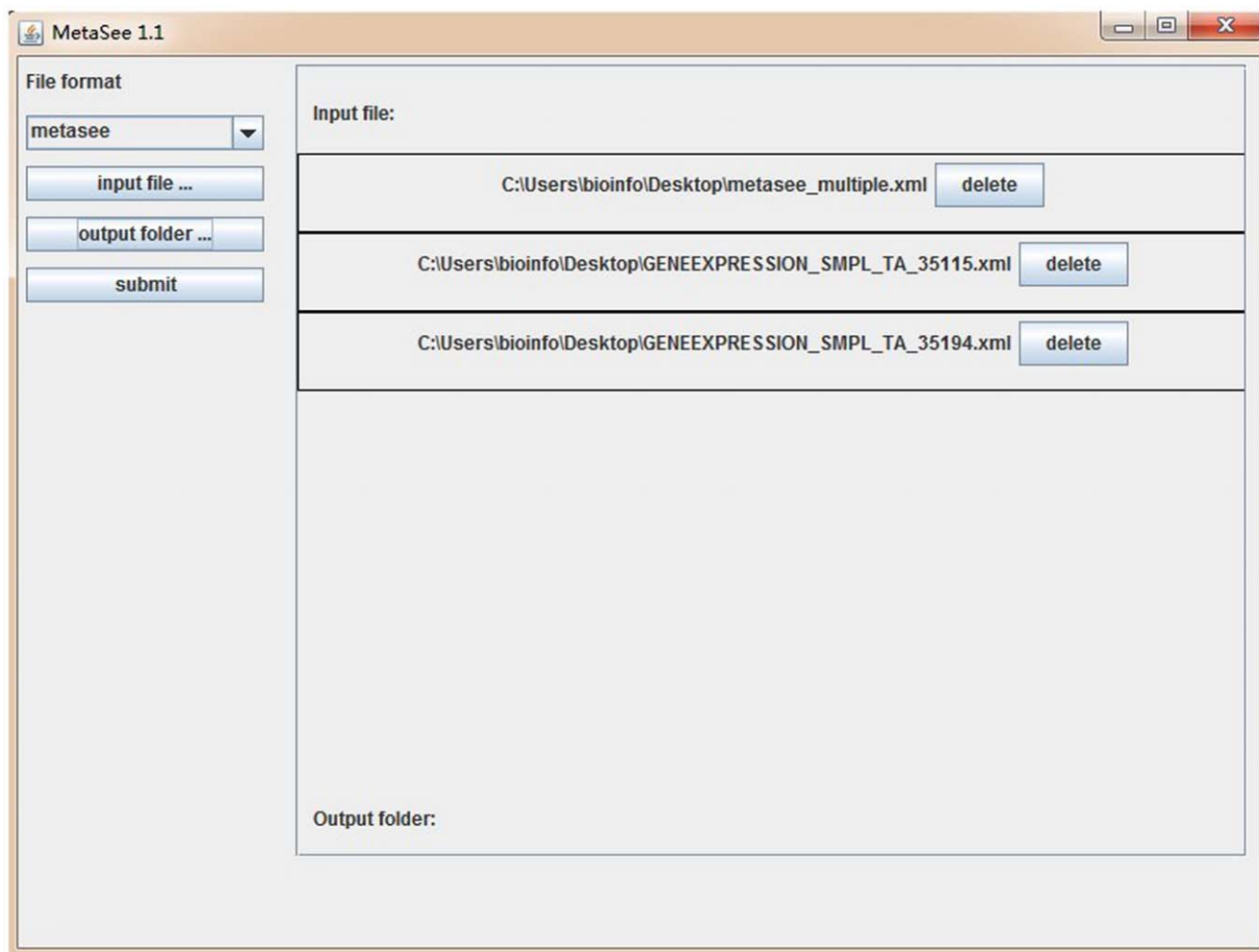


Figure 5. The GUI of standalone version of MetaSee. Firstly, select the format of input data with the drop-down list. Secondly, click the “input file” to select input file, multiple files can be accepted, but these files should be in uniform format. Thirdly, press the “output folder” button to assign the output path. Finally, press “submit” button to run MetaSee. doi:10.1371/journal.pone.0048998.g005

As show-cases of the front-ends of MetaSee, we developed two applications: Digital Mouth and Metagenome global survey.

2 Application on Digital Mouth Metagenomic Samples

There have been several studies on different oral microbial communities, and a series of reports have been published showing their relationship with oral disease, like gingivitis, periodontitis, caries, *et al.* More and more dentists or those who work related to oral healthy are focusing on microbiome etiological factors involved in disease [34]. Our previous studies suggested that caries-associated microbiomes were significantly more variable in community structure whereas the healthy ones were relatively conserved. And abundance changes of certain taxa may distinguish caries microbiota from healthy ones [31]. However, as microbes in oral system function as members of complex multi-taxa communities, we can't understand the characteristics of specific microbiota from a long list of members. What we need is a macroscopic and stereotype visualization on the complex microbiota.

In this work, we focus on the construction of “Digital Mouth” from two perspectives: firstly, the 3D structure of the mouth itself; and secondly, the microbial community's structure in oral samples

(<http://www.metasee.org/visualizationlab/mouth/>). In association with the 3D structure of the mouth, the visualization of microbial community data would provide visualization of a dental environment for in-depth mouth analysis by dentists, especially those for analyzing the microbes in the mouth.

3 Application on Metagenome Global Survey Samples

Following the idea that nature could be understood by reducing its complexity to the molecular level and analyzing the interactions between a small number of molecules to explain simple causal relationships; systems biology has been the modern approach to understand what life is. With the development of sampling technology, some expeditions that carried out a comprehensive worldwide sample collection campaign with a coherent strategy to record all the information necessary to the study of the emergent properties of plankton ecosystems emerged and a new concept “Oceans Systems Biology” [35] was created. With it, a need for analyzing this type of metagenome data also emerged.

In this work, we tried to visualize these data with MetaSee. We collected 380 metagenomic samples with Geographic Information System(GIS) information, and analyzed them with Parallel-META [28] and marked them on a Google map. User can click the

markers on the map, to check them and then compare them by MetaSee (<http://www.metasee.org/visualizationlab/map/>).

Conclusion

The visualization of the metagenomic samples has been proven to be very important to augment our ability to increase the efficiency of manual analyses. However, metagenomic data is very complex, and generally the focus of researchers are the similarities as well as differences among multiple samples, so the visualization of metagenomic data is a difficult work. MetaSee partially solves this problem based on an interactive and dynamic visualization toolbox.

The MetaSee toolbox that is proposed in this paper is an easy to use, interactive, cross platform data visualization toolbox. It addresses the problem of comparing multiple metagenomic samples. Moreover, the open-source portal for plug-in development has enabled the modification and embedding it in other applications possible.

When the WGS (whole genome sequencing)-based sequencing coverage is deep enough, *de novo* or reference-guided genome assembly could be performed. Then we can add more annotation information on every node (taxa/function). With the flexible interface and a variety of input files, MetaSee will be the method of choice for completing this task.

Additionally, MetaSee is not only for metagenomics. It is a flexible framework that can also take other dataset of tree structure as input and give beautiful visualization results. Examples of these data would include global health statistics data from WHO (<http://www.who.int/gho/database/en/>) and Global bio-energy survey data (http://iea.org/stats/balancetable.asp?COUNTRY_CODE=CN).

References

- Proctor GN (1994) Mathematics of microbial plasmid instability and subsequent differential growth of plasmid-free and plasmid-containing cells, relevant to the analysis of experimental colony number data. *Plasmid* 32: 101–130.
- National Research Council (U.S.). Committee on Metagenomics: Challenges and Functional Applications., National Academies Press (U.S.) (2007) The new science of metagenomics : revealing the secrets of our microbial planet. Washington, DC: National Academies Press. xii, 158 p. p.
- Jurkowski A, Reid AH, Labov JB (2007) Metagenomics: a call for bringing a new science into the classroom (while it's still new). *CBE life sciences education* 6: 260–265.
- Magurran AE (2003) *Measuring Biological Diversity*: Wiley.
- Ley RE, Lozupone CA, Hamady M, Knight R, Gordon JI (2008) Worlds within worlds: evolution of the vertebrate gut microbiota. *Nature Reviews Microbiology* 6: 776–788.
- Turnbaugh PJ, Ley RE, Mahowald MA, Magrini V, Mardis ER, et al. (2006) An obesity-associated gut microbiome with increased capacity for energy harvest. *Nature* 444: 1027–1031.
- Fierer N, Hamady M, Lauber CL, Knight R (2008) The influence of sex, handedness, and washing on the diversity of hand surface bacteria. *Proceedings of the National Academy of Sciences of the United States of America* 105: 17994–17999.
- Grice EA, Kong HH, Renaud G, Young AC, Bouffard GG, et al. (2008) A diversity profile of the human skin microbiota. *Genome Research* 18: 1043–1050.
- Turnbaugh PJ, Hamady M, Yatsunenko T, Cantarel BL, Duncan A, et al. (2009) A core gut microbiome in obese and lean twins. *Nature* 457: 480–U487.
- Nasidze I, Quinque D, Li J, Li M, Tang K, et al. (2009) Comparative analysis of human saliva microbiome diversity by barcoded pyrosequencing and cloning approaches. *Analytical Biochemistry* 391: 64–68.
- Yang F, Zeng X, Ning K, Liu K-L, Lo C-C, et al. (2012) Saliva microbiomes distinguish caries-active from healthy human populations. *ISME Journal* 6: 1–10.
- Charuvaka A, Rangwala H (2011) Evaluation of short read metagenomic assembly. *BMC genomics* 12 Suppl 2: S8.
- Nielsen CB, Cantor M, Dubchak I, Gordon D, Wang T (2010) Visualizing genomes: techniques and challenges. *Nature Methods* 7: S5–S15.
- Ondov B, Bergman N, Phillippy A (2011) Interactive metagenomic visualization in a Web browser. *BMC Bioinformatics* 12: 385.

Availability

Licenses:

MetaSee was released under The MIT License

The standalone version and online service of MetaSee could be found at: <http://www.metasee.org/>

URL of Digital Mouth: <http://www.metasee.org/visualizationlab/mouth/>

URL of Metagenome global survey: <http://www.metasee.org/visualizationlab/map/>.

Supporting Information

Table S1 Information of four saliva metagenomic samples (DOCX)

Text S1 Comparison with existing metagenome visualization tools. Krona is not good at visualization of multiple samples. Producing a multi-sample metagenomic image with iTOL is difficult because there is no supporting API. MEGAN has powerful visualization module, but it is not open-source. (DOCX)

Acknowledgments

We thank Shuncheng Lu (Email: lscgzwd@gmail.com) from Moki (Sichuan) Company Limited for insightful comments and discussions of UI and UE design.

Author Contributions

Conceived and designed the experiments: BS XS JX KN. Performed the experiments: BS XS. Analyzed the data: BS XS KN. Contributed reagents/materials/analysis tools: BS XS KN. Wrote the paper: BS XS JX KN.

- Krzywinski MI, Schein JE, Birol I, Connors J, Gascoyne R, et al. (2009) Circos: An information aesthetic for comparative genomics. *Genome Research*.
- Huson DH, Mitra S, Ruscheweyh HJ, Weber N, Schuster SC (2011) Integrative analysis of environmental sequences using MEGAN4. *Genome Research* 21: 1552–1560.
- Eppley JM, Tyson GW, Getz WM, Banfield JF (2007) Strainer: software for analysis of population variation in community genomic datasets. *BMC Bioinformatics* 8: 398.
- Hallin PF, Binnewies TT, Ussery DW (2008) The genome BLAST atlas—a GeneWiz extension for visualization of whole-genome homology. *Mol Biosyst* 4: 363–371.
- Markowitz VM, Chen IMA, Chu K, Szeto E, Palaniappan K, et al. (2012) IMG/M: the integrated metagenome data management and comparative analysis system. *Nucleic Acids Research* 40: D123–D129.
- Leticia I, Bork P (2011) Interactive Tree Of Life v2: online annotation and display of phylogenetic trees made easy. *Nucleic Acids Research* 39: W475–W478.
- Goll J, Rusch DB, Tanenbaum DM, Thiagarajan M, Li K, et al. (2010) METAREP: JCVI metagenomics reports—an open source tool for high-performance comparative metagenomics. *Bioinformatics* 26: 2631–2632.
- Meyer F, Paarmann D, D'Souza M, Olson R, Glass E, et al. (2008) The metagenomics RAST server - a public resource for the automatic phylogenetic and functional analysis of metagenomes. *Bmc Bioinformatics* 9: 386.
- Johnson B, Shneiderman B (1991) Tree-maps: a space-filling approach to the visualization of hierarchical information structures. 284–291.
- Mackelprang R, Waldrop MP, DeAngelis KM, David MM, Chavarria KL, et al. (2011) Metagenomic analysis of a permafrost microbial community reveals a rapid response to thaw. *Nature* 480: 368–371.
- Hess M, Sczyrba A, Egan R, Kim T-W, Chokhwalala H, et al. (2011) Metagenomic Discovery of Biomass-Degrading Genes and Genomes from Cow Rumens. *Science* 331: 463–467.
- Wooley JC, Godzik A, Friedberg I (2010) A Primer on Metagenomics. *PLoS Comput Biol* 6: e1000667.
- Su X, XJ, Ning K (2011) Parallel-META: A High-Performance Computational Pipeline for Metagenomic Data Analysis. *IEEE ISB*: 173–178.
- Su X, Xu J, Ning K (2012) Parallel-META: efficient metagenomic data analysis based on high-performance computation. *BMC Systems Biology* 6: S16.

29. Federhen S (2012) The NCBI Taxonomy database. *Nucleic Acids Research* 40: D136–D143.
30. Sun S, Chen J, Li W, Altintas I, Lin A, et al. (2011) Community cyberinfrastructure for Advanced Microbial Ecology Research and Analysis: the CAMERA resource. *Nucleic Acids Res* 39: D546–551.
31. Chen T, Yu W-H, Izard J, Baranova OV, Lakshmanan A, et al. (2010) The Human Oral Microbiome Database: a web accessible resource for investigating oral microbe taxonomic and genomic information. *Database-the Journal of Biological Databases and Curation*.
32. Eppley JM, Tyson GW, Getz WM, Banfield JF (2007) Strainer: software for analysis of population variation in community genomic datasets. *BMC Bioinformatics* 8.
33. Huson DH, Auch AF, Qi J, Schuster SC (2007) MEGAN analysis of metagenomic data. *Genome Res* 17: 377–386.
34. Liu B, Faller LL, Klitgord N, Mazumdar V, Ghodsi M, et al. (2012) Deep sequencing of the oral microbiome reveals signatures of periodontal disease. *Plos One* 7: e37919–e37919.
35. Karsenti E (2012) Towards an ‘Oceans Systems Biology’. *Mol Syst Biol* 8.