

RESEARCH ARTICLE

Open Access

Dynamic tumor modeling of the dose–response relationship for everolimus in metastatic renal cell carcinoma using data from the phase 3 RECORD-1 trial

Andrew Stein^{1*}, Wenping Wang², Alison A Carter³, Ovidiu Chiparus⁴, Norbert Hollaender⁵, Hyewon Kim⁶, Robert J Motzer⁷ and Celine Sarr⁸

Abstract

Background: The phase 3 RECORD-1 trial (NCT00410124) established the efficacy and safety of everolimus in patients with metastatic renal cell carcinoma (mRCC) who progress on sunitinib or sorafenib. In RECORD-1, patients received 10 mg everolimus daily, with dose reduction to 5 mg daily allowed for toxicity. We have developed a model of tumor growth dynamics utilizing serial measurements of the sum of the longest tumor diameters (SLD) from individual RECORD-1 patients to define the dose–response relationship of everolimus.

Results: The model predicts that after 1 year of continuous dosing, the change in SLD of target lesions will be $+142.1\% \pm 98.3\%$, $+22.4\% \pm 17.2\%$, and $-15.7\% \pm 11.5\%$ in the average patient treated with placebo, 5 mg everolimus, and 10 mg everolimus, respectively. This nonlinear, mixed-effects modeling approach can be used to describe the dynamics of each individual patient, as well as the overall population. This allows evaluation of how an actual dosing history and individual covariates impact on the observed drug effect, and offers the possibility of predicting clinical observations as a function of time.

Conclusions: In this pharmacodynamic model of tumor response, everolimus more effectively shrinks target lesions in mRCC when dosed 10 mg daily versus 5 mg daily, although a 5-mg dose still shows an antitumor effect. These data support earlier studies that established 10 mg daily as the preferred clinical dose of everolimus, and improve our understanding of the everolimus dose–response relationship.

Keywords: Efficacy, Kidney, Oncology, Pharmacodynamics, Therapeutics

Background

Everolimus is an orally active inhibitor of the mammalian target of rapamycin (mTOR) that has been approved in 65 countries worldwide for the treatment of patients with metastatic renal cell carcinoma (mRCC) who progress on or are intolerant of vascular endothelial growth factor receptor-tyrosine kinase inhibitor (VEGFR-TKI) therapy [1].

The serine/threonine kinase mTOR is a key regulator of cell growth and proliferation, metabolism, and angiogenesis

[2]. Abnormal activation of the mTOR signaling pathway has been implicated in the pathogenesis of RCC [3–5]. Two principal downstream effectors are responsible for relaying mTOR signaling: the translational repressor protein eukaryotic initiation factor 4E (eIF-4E) binding protein 1 (4EBP1) and the ribosomal protein S6 kinase 1 (S6K1) [6]. Phosphorylation of 4EBP1 by mTOR causes the release eIF-4E, which then acts to initiate cap-dependent protein translation. Following activation by mTOR, S6K1 also regulates protein translation via phosphorylation of ribosomal protein S6.

Results of preclinical and clinical studies have demonstrated the relationship between inhibition of mTOR signaling by everolimus and antitumor efficacy [7–10].

* Correspondence: andrew.stein@novartis.com

¹Modeling & Simulation, Novartis Institutes for Biomedical Research, 45 Sidney St, Cambridge, MA, USA

Full list of author information is available at the end of the article

Doses of everolimus that produced an antitumor effect in a syngeneic CA20948 pancreatic rat tumor xenograft model also dramatically inhibited mTOR signaling (as measured by inhibition of 4E-BP1 phosphorylation and S6K1 signaling) in tumor, skin, and peripheral blood mononuclear cells (PBMCs) [10]. These data were used to develop a direct-link pharmacokinetic/pharmacodynamic model that described the relationship between inhibition of S6K1 and antitumor effects of different concentrations of everolimus in tumor-bearing rats. Once corrected for interspecies pharmacokinetic differences, this model was applied in a phase 1 dose-escalation trial to describe changes in S6K1 inhibition in tumor and PBMCs from patients treated with everolimus [11]. The model predicted that daily doses of everolimus 5 or 10 mg/day would demonstrate a more profound and sustained effect on S6K1 inhibition than weekly doses of 20, 30, 50, or 70 mg. A subsequent phase 1 dose-escalation study evaluated the pharmacodynamic effects of the above doses and schedules of everolimus using biomarkers from both the 4E-BP1 and S6K1 pathways [11]. Inhibition of mTOR was achieved at all doses and schedules; however, more profound inhibition of the pathway was seen with 10 mg daily than with 5 mg daily or any weekly dosing schedule, as this was the only dose that achieved complete inhibition of both the 4E-BP1 and S6K1 pathways. Based on these phase 1 data, a daily dose of 10 mg of everolimus was used in a subsequent phase 2 study in patients with mRCC [12], and in the pivotal phase 3 RECORD-1 trial [13,14].

The RECORD-1 trial was an international, randomized, placebo-controlled study that demonstrated the efficacy and safety of everolimus over placebo in patients with mRCC who progressed after initial treatment with VEGFr-TKIs [13,14]. The primary efficacy end point for the study was progression-free survival (PFS) per central radiology review, according to RECIST [15]. Median PFS was more than doubled by everolimus (4.9 months) versus placebo (1.9 months) (HR, 0.33; 95% CI: 0.25-0.43; $P < 0.001$), thus establishing the efficacy of everolimus in patients with mRCC [13,14]. Everolimus was also more effective than placebo at reducing tumor size;

47% of everolimus-treated patients showed a decrease in the sum of the longest tumor diameters (SLD), compared with 10% of patients receiving placebo [14]. Notably, a retrospective analysis of RECORD-1 identified a best overall tumor burden reduction of 5% as the threshold for PFS benefit in everolimus-treated patients [16].

The RECIST criteria divide patients into 4 response categories: complete response (CR), partial response (PR), stable disease (SD), and progressive disease (PD), based on changes in the SLD of target lesions, the unequivocal progression or disappearance of nontarget lesions, and the appearance of new metastases. While RECIST provides a categoric assessment of patient response, the change in an individual patient's tumor size over time provides a continuous assessment of response. As such, monitoring change in tumor size over time may enable detection of therapeutic efficacy using a smaller number of patients than required with RECIST [17]. Pharmacodynamic models of the change in tumor size over time have been used recently to quantify the effects of therapy on solid tumors [18,19]. Such models may provide information about a variety of factors affecting patient response to a drug, including demographics, stage of disease, or baseline biomarkers, and are expected to have an enhanced ability to detect the prognostic significance of such factors as compared with analyses that employ time-to-event data such as PFS [20]. The use of dynamic tumor models to link change in tumor size over time to patient response and survival has been proposed as a tool for improving clinical trial design and decision-making in oncology drug development [20,21].

Herein, we report our development of a model for tumor growth dynamics to describe the tumor burden reduction response to everolimus in the phase 3 RECORD-1 trial in patients with mRCC. This model was used to explore the effect of two different doses of everolimus (5 mg and 10 mg daily) on tumor growth. This methodology complements prior phase 1 analyses of mTOR pathway inhibition used to guide dose selection, and directly links the administered dose of everolimus to change in SLD, a key variable used in the assessment of PFS, the primary end point for the RECORD-1 study.

Table 1 Regimen and tumor assessment in patients enrolled in the RECORD-1 Phase 3 Trial

Patient category	Total	Everolimus arm	Placebo arm
All	416	277	139
With baseline tumor measurement	407	272	135
Crossed over from placebo to everolimus	111	NA	111
Received at least one 5-mg dose of everolimus	98	69	29
Received at least one 5-mg dose and a subsequent tumor size assessment	68	53	15

NA, not applicable.

Results

Of the 416 evaluable patients from the RECORD-1 trial, 407 (97.8%) had at least 1 baseline tumor assessment by the local investigator and were included in this analysis (Table 1); there were a total of 1569 individual tumor measurements. Baseline tumor measurements were obtained for 272/277 patients in the everolimus arm and 135/139 patients in the placebo arm. The majority (79.9%) of patients on the placebo arm crossed over to everolimus after disease progression, after a mean placebo treatment duration of 96.5 days. A total of 98 patients, 69 patients from the everolimus arm and 29 patients from the placebo arm, received at least 1 dose adjustment of everolimus to 5 mg daily over the course of the trial. Among these 98 patients, the mean duration of everolimus treatment was 117.3 days at 5 mg, and 40.5 days at 10 mg. Sixty-eight of these patients had at least 1 tumor assessment after receiving a 5-mg dose (53 from the everolimus arm and 15 from the placebo arm).

Representative plots of the measured change in SLD in individual patients over time as related to dose of everolimus received are shown in Figure 1. Data for all 407 patients were fit to 2 nested dose-effect models based on the following equation: $dy/dt = r - E_{dose}y$, where

y is the SLD, dy/dt is the change in SLD, r is the placebo growth rate, and E_{dose} is the tumor shrinkage due to the daily dose, which can change with time. The nesting arises from the use of two different models for E_{dose} (model 1: 5 mg and 10 mg everolimus have equal effects [$E_5 = E_{10}$]; model 2: 5 mg and 10 mg everolimus have different effects [$E_5 \neq E_{10}$]). It is important to note that the dose of everolimus could change at any given time. Some patients who were randomly assigned to placebo switched to everolimus upon disease progression, and some patients who received everolimus could have had their dose reduced to either 5 mg or 0 mg to manage an adverse event (AE). This modeling approach was designed to account for daily changes in everolimus dose (see the Methods section for a more detailed description of each model and model parameters). Patients on either the placebo arm or the everolimus arm who did not have everolimus dose reduction to 5 mg were well described by both models. However, a clear distinction between the 2 models was evident in the subgroup of patients who had everolimus dose reduction to 5 mg. Model 2, which allowed the effects of 5 mg and 10 mg everolimus to differ, provided a significantly better fit for the data from this patient group than did the model

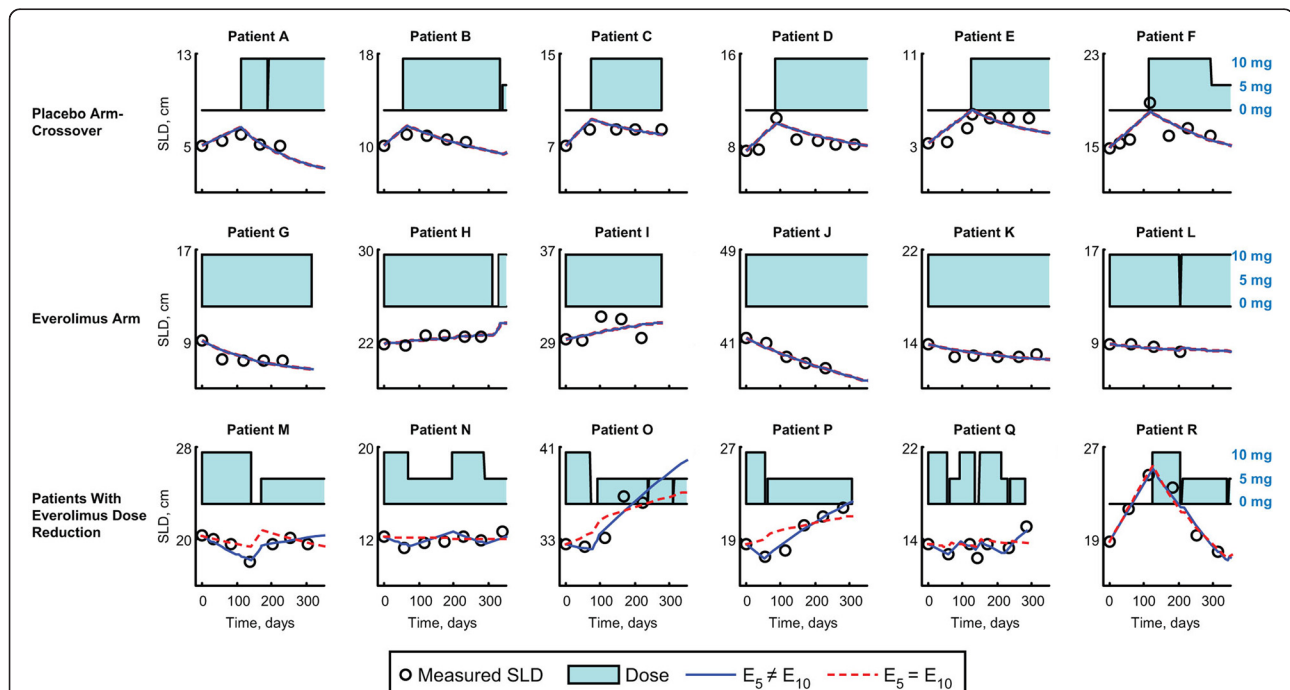


Figure 1 Change in sum of the longest tumor diameters (SLD) over time in representative patients in relation to everolimus treatment.

Three treatment groups are shown: 1) patients randomized to placebo who crossed over to everolimus on disease progression; 2) patients randomized to everolimus; and 3) patients randomized to everolimus or placebo who had at least one everolimus dose reduction from 10 mg to 5 mg daily. Two different fits of the SLD over time are illustrated for each patient, based on: i) a model that assumes $E_5 = E_{10}$ (model 1, shown in the red dashed line) and ii) a model that assumes $E_5 \neq E_{10}$ (model 2, shown in the blue solid line). Daily dose of everolimus administered is indicated by a barplot as a function of time with a value of 10 mg at its maximum. E_5 , treatment effect of everolimus 5 mg daily; E_{10} , treatment effect of everolimus 10 mg daily.

describing an identical effect for the 2 doses (model 1). The improvement of model 2 over model 1 as applied to the entire patient population was quantified using a likelihood ratio test and was found to be highly statistically significant ($P < 0.0001$). Of the 407 patients evaluated, only 7 patients presented poor fits to the model; of these, 4 patients had an SLD that decreased during initial treatment with everolimus, but began to increase again after prolonged treatment (Additional file 1: Figure A1).

Parameters for the typical patient in model 2 were, $r = 46.0 \pm 5.7 \cdot 10^{-3}$ cm/day, $E_{10} = 3.9 \pm 0.5 \cdot 10^{-3}$ /day, and $E_5 = 2.3 \pm 0.5 \cdot 10^{-3}$ /day. The η -shrinkage on each parameter was $\eta_r = 0.21$, $\eta_{E_{10}} = 0.36$, and $\eta_{E_5} = 0.80$. The large η shrinkage for E_5 may arise because this parameter cannot be estimated for many patients who don't receive a 5-mg everolimus dose. Model simulation, as described in the Methods section, was performed to explore the response of a typical patient maintaining continuous, uninterrupted dosing. The model predicts a change in SLD of target lesions after 3 months of $35.6\% \pm 24.8\%$ on placebo, $+7.7\% \pm 7.0\%$ for a 5-mg dose, and $-7.6\% \pm 5.5\%$ for a 10-mg dose and after 1 year of $+142.1\% \pm 98.3\%$ on placebo, $+22.4\% \pm 17.2\%$ for a 5-mg dose, and $-15.7\% \pm 11.5\%$ for a 10-mg dose (Figure 2).

A covariate analysis was conducted to investigate the impact of prognostic factors of reported relevance in mRCC on the placebo growth rate (r) and drug effect (E_{10} , E_5). Results of this analysis showed that the only significant predictor of the model parameters was the tumor size at baseline. A larger baseline SLD was indicative of increased placebo growth rate and decreased drug effectiveness with high statistical significance ($P < 0.0001$). Other prognostic factors did not show any significant impact on these parameters. We note that the next most predictive covariate was the corrected calcium levels; however, while this covariate did lead to a numerically better fit, it did not reduce the intersubject variability of the model parameters (η_r , $\eta_{E_{10}}$) and thus was not included in the final model.

The final model for the i th patient is given by

$$\begin{aligned} dy_i/dt &= r_i - E_{dose}y_i \\ E_{dose} &= \begin{cases} E_{10,i} & \text{when dose} = 10 \text{ mg} \\ E_{5,i} & \text{when dose} = 5 \text{ mg} \\ 0 & \text{when dose} = 0 \end{cases} \\ r_i &= r \times (y_{0,i}/\hat{y}_0)^{\theta_1} + N(0, \eta_r) \\ E_{10,i} &= E_{10} \times (y_{0,i}/\hat{y}_0)^{\theta_2} + N(0, \eta_{E_{10}}) \\ E_{5,i} &= E_5 \times (y_{0,i}/\hat{y}_0)^{\theta_2} + N(0, \eta_{E_5}) \\ \epsilon &= N(0, \sigma_\epsilon) \end{aligned}$$

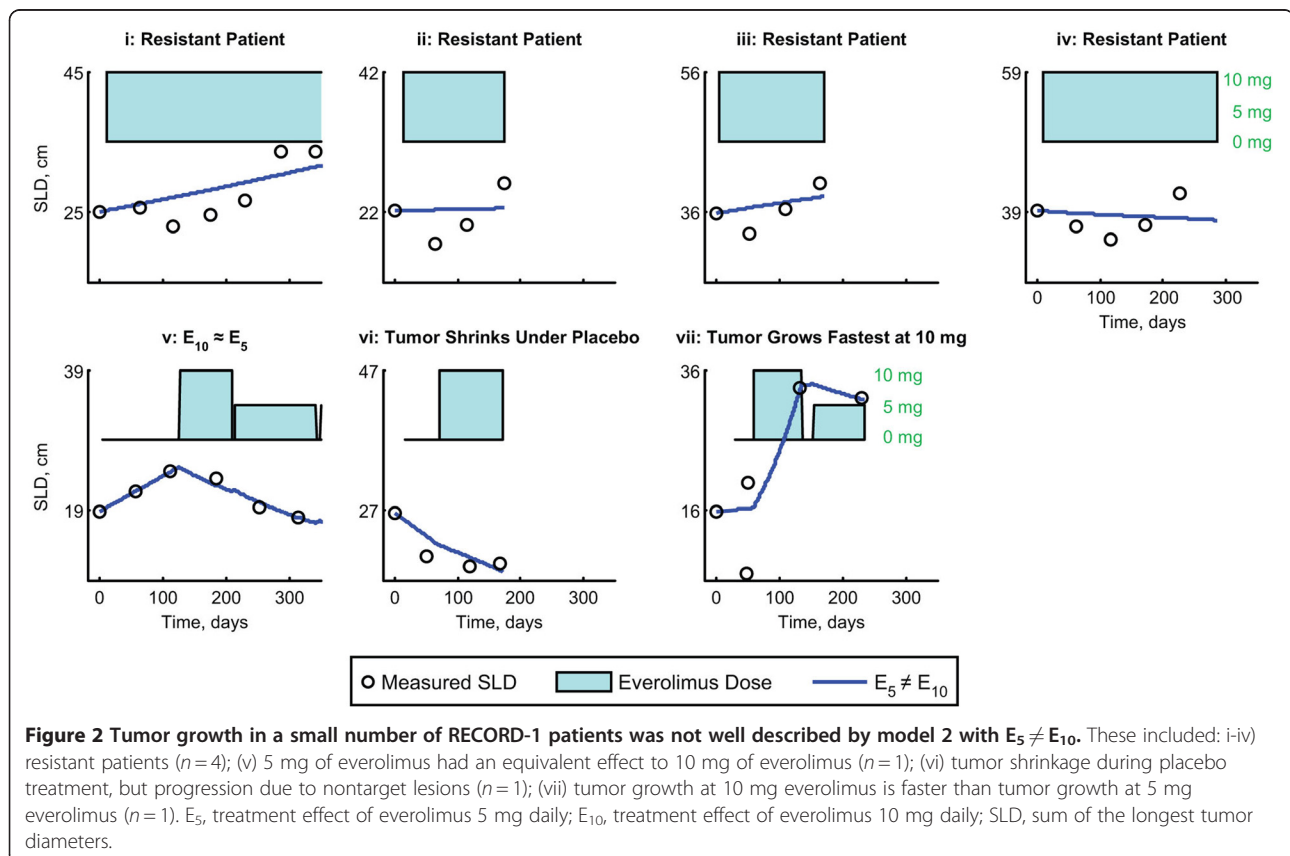


Table 2 Parameters for final model (Model 2 [$E_5 \neq E_{10}$]) with all covariates

Variable	Units	Mean value, $\theta \pm SE$	Intersubject variability, $\eta \pm SE$
Placebo growth rate, r	10^{-3} cm/day	46.0 ± 5.7	3.5 ± 2.1
Drug effect of 10 mg, E_{10}	10^{-3} /day	3.9 ± 0.5	0.3 ± 0.2
Drug effect of 5 mg, E_5	10^{-3} /day	2.3 ± 0.5	0.2 ± 0.2
Multiplicative effect of baseline SLD on placebo growth rate, θ_1		0.4 ± 0.2	NA
Multiplicative effect of baseline SLD on drug effect, θ_2		-0.7 ± 0.2	NA
Residual error, σ_ϵ	cm	1.1	NA

NA, not applicable; SE, standard error; SLD, sum of the longest tumor diameters. Intersubject variability (η) denotes the standard deviation of the parameter distributions.

where \hat{y}_0 is the median baseline SLD of 14.4 cm, and $N(0, \eta)$ indicates a random variable following a normal distribution with mean 0 and standard deviation to be estimated. The model parameters are summarized in Table 2. Model qualification showed: 1) good agreement between the individual, clinically measured values for SLD and those predicted by the model (Figure 3); 2) acceptable uncertainty in parameter values, as measured by the standard error (Table 2); 3) good agreement with actual patient observations in a simulation of two sets of 10,000 virtual patients (Figure 4). The purpose of the visual predictive check (VPC) is to ensure that the model adequately describes the data used to develop it. We note that at early times, there is good agreement between the model simulations and the actual data of the 5th, 50th, and 95th percentiles. However, at later times, the 95th percentile tends to be underestimated. This is due to informative censoring of the trial; patients with fast growing tumors are more likely to progress and then change therapies. For example, a patient on placebo with a rapidly growing tumor may progress after only two months and change therapy, whereas a patient with a slower growing tumor could stay on placebo for

12 months. A more complete simulation of the trial would ultimately require simulation of the effect of tumor growth on the therapy received.

As the trial protocol called for dose reductions only when patients experienced AEs, there is a risk that the dose-response relationship we have observed for 5 mg everolimus only applies to patients who experienced AEs, and not to the entire population. To evaluate this possibility, individual estimates of E_{10} were compared for the subgroups of patients who did have, or who did not have, any everolimus dose reductions or interruptions. The median drug effect (E_{10}) for these two populations was found to differ by only 4% (Figure 5). The minimal difference in E_{10} observed between patients who did or did not experience dose reductions or interruptions suggests that conclusions derived from the model can be generalized to the overall population.

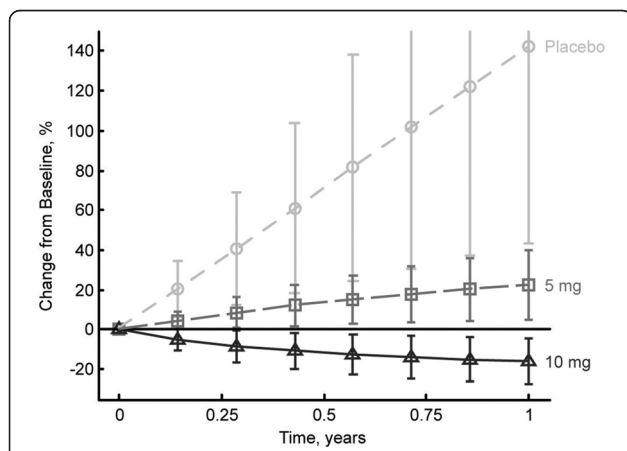


Figure 3 Simulated changes in tumor size over 1 year in the average patient treated continuously with either placebo or everolimus (5 or 10 mg daily).

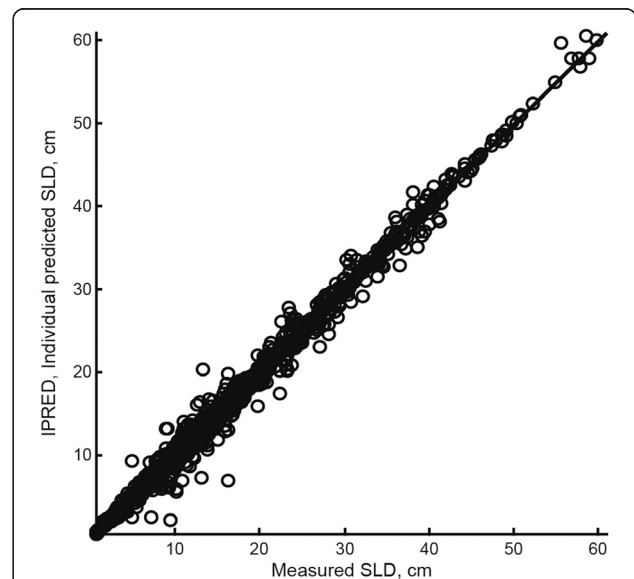
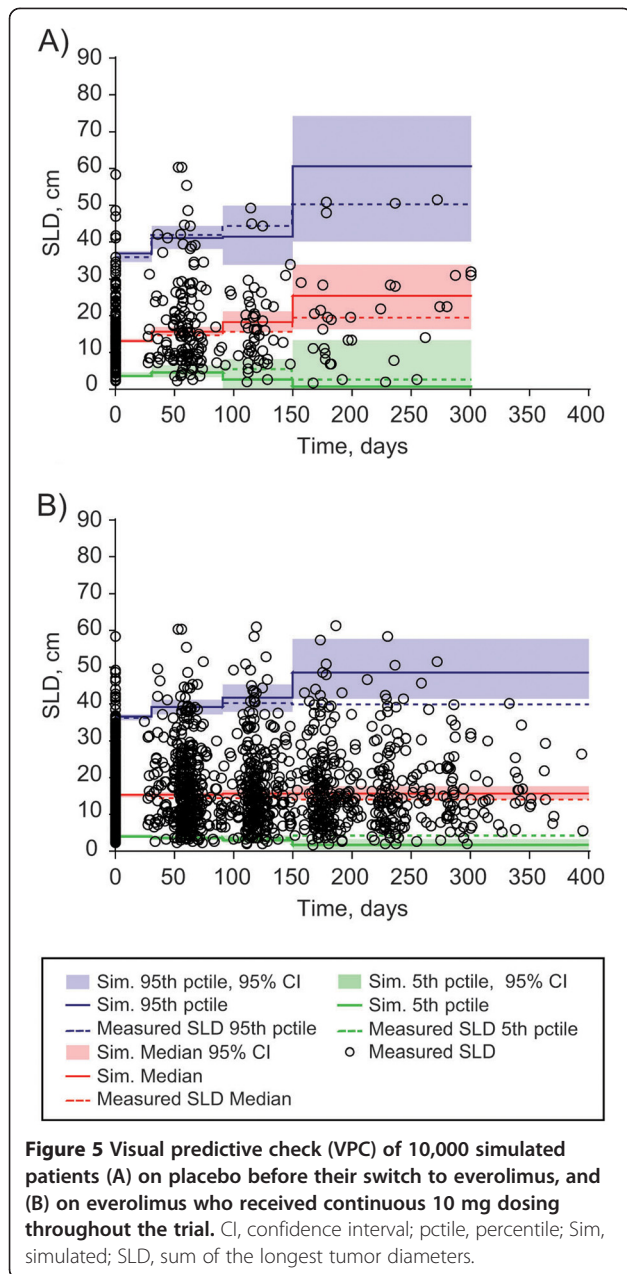


Figure 4 Correlation of the individual predictions of SLD by the model in which $E_5 \neq E_{10}$ (model 2) to the actual measured SLD from each patient. E_5 , treatment effect of everolimus 5 mg daily; E_{10} , treatment effect of everolimus 10 mg daily; SLD, sum of the longest tumor diameters.



Discussion

We have developed a pharmacodynamic model to describe tumor growth in patients with mRCC enrolled in the phase 3 RECORD-1 trial. Although RECORD-1 did not have a separate arm in which all patients were administered a 5-mg dose of everolimus, the model was able to detect a difference in the effect of a 5-mg and a 10-mg dose on reducing the size of target lesions by taking into account the dosing histories of individual patients (Figure 1). It is worthy of note that when formulating the model, the effect of 5 mg everolimus was permitted to be less than, equal to, or even greater than the effect

10 mg everolimus. For the vast majority of patients, the model estimated a 10-mg dose of everolimus to be more effective than a 5-mg dose at shrinking their SLD. Our model assessed the effect of dose on growth of target lesions; thus, it did not capture any potential benefit that a reduced dose of everolimus may have on nontarget lesions and/or the prevention of new lesions. Subsequent efforts to model the dose-response of nontarget and new lesions demonstrated a marked difference between placebo and a 10-mg dose of everolimus, but no difference between 5-mg and 10-mg doses of everolimus was detected [22]. It may be that there is no difference between the two everolimus doses on nontarget and new lesions or that the lack of difference may have been because the measurements of these lesion types were categorical rather than continuous; characterization of the dose-response relationship for these variables requires additional data.

In a typical statistical analysis of a clinical trial, standard techniques such as the log-rank test are performed to compare outcomes in different treatment arms [23]. These techniques have the advantages of simplicity and a long history of use, but a disadvantage is that information about individual patients is ignored. The nonlinear mixed-effects modeling approach presented here can be used to describe not only the overall population, but also the tumor dynamics of each individual patient. This method offers the possibility to predict clinical observations as a function of time, and enables evaluation of the impact of actual dosing history and individual covariates on the drug effect observed. Modeling a continuous variable (tumor size) has enabled us to quantify a difference in the effect of 10 mg versus 5 mg everolimus, a difference that a coarser approach based on modeling categorical variables, such as RECIST response or PFS, might have missed.

In recent years, an increasing number of reports on modeling tumor dynamics have appeared in the literature and a variety of models have been employed that vary in the following three ways. 1) For placebo-treated patients, tumor growth has been described as linear, exponential, logistic, and/or gompertzian [19-21,24]. For the placebo growth model, we note that therapy is generally changed once a patient progresses; thus, the long-term steady state in the gompertz and logistic equations is rarely observed (Figure 1). 2) Furthermore, the drug effect can affect either the growth or decay term in the equation. In our case, we have tried both functional forms, but since they have similar analytic solutions, both describe our data reasonably well. 3) Finally, one can introduce a delay in the time it takes for a drug to affect the tumor [19]. We found that adding delay between the dose and the drug effect did not significantly improve the model fits, and we note that the time-scale

for tumor shrinkage is on the order of months, whereas the terminal half-life of everolimus when dosed at 10 mg daily is around 30 h [9], so any delay is likely short compared with the time scales of interest in the study. In future work, we plan to formally compare these different models. It should be noted that multiple models would likely be suitable to describe the data presented herein.

Tumor growth in the majority of RECORD-1 patients was well described by our model, with exceptions observed in <2% of patients. Of these patients ($n=7$), 4 displayed initial shrinkage followed by growth over the course of treatment. Because of the small sample size, further modeling of the tumor dynamics in these particular patients was not conducted.

Simulations of tumor size in patients after 1 year of continuous treatment with everolimus show that a significant antitumor effect is achieved with either a 5-mg or 10-mg daily dose, but that a substantially improved response (tumor shrinkage) can be expected in patients receiving the 10-mg daily dose. These results support earlier clinical studies that identified 10 mg daily as the preferred clinical dose based on the complete inhibition of mTOR pathway signaling observed in tumor tissue from patients receiving this dosing regimen [8,9,11]. While our results suggest that, whenever possible, clinical dosing of everolimus should be maintained at 10 mg daily, the model also demonstrates that a reduction in tumor burden compared with placebo can be achieved even in patients who require a dose reduction to 5 mg daily. This observation is noteworthy, as dose reductions to 5 mg daily are an integral part of the clinical strategy recommended by a panel of RECORD-1 investigators for the management of noninfectious pneumonitis (grade 2/3), infection (grade 2/3), stomatitis (grade 3), and metabolic abnormalities (grade 3) that arise as a result of everolimus therapy [25].

To definitively show that a 10-mg dose of everolimus is superior to a 5-mg dose, a clinical trial would be required with 10 mg everolimus and 5 mg everolimus arms that is powered to measure an outcome difference (in PFS or overall survival [OS]) between the two doses. The RECORD-1 trial was not designed to compare these two different treatment arms (5 mg and 10 mg) to placebo, and such a 3-arm trial would have required more patients. Even if such data were available, one would need to consider that dose in the 10 mg everolimus arm might have been reduced in some patients due to AEs. The present analysis allows for the detection of a difference in the target lesion response to the 2 different doses in RECORD-1 by modeling the relationship between the dose given over time and tumor size. Thus, this work complements the initial biomarker analysis [11] demonstrating that not only is a 10-mg daily dose of everolimus more effective than a 5-mg daily dose at reducing

downstream mTOR signaling, but also that a 10-mg daily dose is more effective than a 5-mg daily dose at shrinking target lesions.

Conclusions

In summary, a pharmacodynamic model of tumor response has been developed that utilizes the everolimus dosing history and tumor time course of each patient from the RECORD-1 trial to directly link everolimus dose to tumor size. Our analysis demonstrates that a daily dose of 10 mg is more efficacious than a daily dose of 5 mg at reducing tumor growth in patients with mRCC, and supports earlier studies that established 10 mg daily as the preferred clinical dose of everolimus. These results have direct implications for patients currently receiving everolimus therapy for whom dose modification may be an appropriate treatment strategy. Since tumor size is used directly in the calculation of PFS, the primary trial end point, this model may provide improved understanding of the everolimus dose–response relationship relative to methods that utilize measures of mTOR pathway inhibition.

Methods

Patients

Study design for the double-blind, randomized, phase 3 RECORD-1 study (Clinicaltrials.gov identifier: NCT00410124) has been described previously [13,14]. Patients with clear cell mRCC who had progressed on, or who were intolerant of, treatment with sunitinib or sorafenib were enrolled. Prior therapy with cytokines and/or VEGF inhibitors (e.g., bevacizumab) was permitted. Patients were randomized (2:1) to receive either everolimus 10 mg daily ($n=277$) or placebo ($n=139$) plus best supportive care. Dose reduction to 5 mg everolimus and/or treatment interruption was allowed for toxicity.

Disease progression was defined according to RECIST [15]; at least a 20% increase in the SLD of all target lesions compared with the smallest (nadir) SLD of all target lesions recorded at or after baseline and/or occurrence of a new lesion and/or unequivocal progression of existing nontarget lesions.

The protocol was approved by the institutional review boards of the participating institutions and the study was done in accordance with international standards of good clinical practice. All patients provided written informed consent. The study was conducted according to the ethical principles of the Declaration of Helsinki.

Pharmacodynamic data collection and analysis

All RECORD-1 patients with at least one baseline tumor measurement were included in this retrospective analysis. The dataset employed included SLD data collected through

the final cut-off date of February 28, 2008. Tumor measurements (performed by CT or MRI scan) were taken at screening and every 8 weeks for the remainder of the study. Target lesions were identified at baseline per RECIST criteria; ≤ 5 measurable lesions per organ and 10 lesions in total, representative of all involved organs [15]. Target lesions were selected based on size (longest diameter) and suitability for accurate repeated measurements (RECIST) [15]. Most target lesions were metastatic, most frequently appearing in the lung, liver, and lymph nodes. SLD for all target lesions was calculated and reported as baseline SLD. Selection of target lesions and tumor assessments were conducted both by local investigators and by blinded independent central review. However, patients initially randomized to the placebo arm who crossed over to open-label everolimus following disease progression were subsequently followed by local investigators only. For this reason, the local investigator-assessed dataset was employed in our analysis.

Nonlinear mixed-effects modeling was conducted using the First Order Conditional Estimation (FOCE) method with the \$PRED in NONMEM (version VI, GloboMax LLC). The modeling utilized measurements of SLD at various time points and was defined for patient i by the equation $dy_i/dt = r_i - E_{dose,i}y_i$ in which y = sum of the longest tumor diameters, dy/dt = rate of change of tumor size, r = net tumor growth rate for placebo-treated tumors, E_{dose} = effect of everolimus on tumor growth as a function of the daily dose. An additive error ϵ was then added to $y(t)$. The model parameters ($r_i, E_{10,i}, E_{5,i}$) were assumed to be normally distributed. Using the equation above, 2 different dose-effect models for E_{dose} were explored. The initial tumor size (y_0) was set to the observed baseline tumor assessment of each patient. Alternatively, we could have treated y_0 as a free parameter that is fit to the data. We chose this approach instead because we found that the observed y_0 did not follow a true log-normal distribution, and forcing this distribution via a model led to poor fits for patients with very large or very small initial SLDs. We note that this framework allows for daily dose changes to directly affect the target lesion dynamics.

In model 1, it was assumed that the effect of 5 mg would be equal to the effect of 10 mg. In model 2, it was assumed that the effect of 5 mg and 10 mg would be different [$E_5 \neq E_{10}$].

$$\text{Model1 : } E_{dose,i} = \begin{cases} E_{10,i} & \text{when dose} > 0 \\ 0 & \text{when dose} = 0 \end{cases}$$

$$\text{Model2 : } E_{dose,i} = \begin{cases} E_{10,i} & \text{when dose} = 10 \text{ mg} \\ E_{5,i} & \text{when dose} = 5 \text{ mg} \\ 0, & \text{when dose} = 0 \end{cases}$$

The possibility that there was a covariance relationship between the model parameters was also tested.

In this model, the net growth rate of the tumor (dy/dt) was defined as the change in tumor size over time, which may depend upon a number of factors, including cell proliferation, apoptosis, necrosis, and change in size of individual tumor cells. The biological mechanisms underlying change in tumor size cannot be determined based on SLD alone; thus, the model is agnostic as to the specific mechanisms governing SLD growth dynamics.

Prognostic factor data collection and analysis

A number of prognostic factors for PFS and OS in the RECORD-1 trial have been previously reported [14]. We explored the effect of a subset of these factors on SLD dynamics, including: hemoglobin, baseline Karnofsky performance score, corrected serum calcium, number of other organs involved (including liver, bone, lymph nodes, and central nervous system), prior therapy (with either sunitinib or interferon), neutrophil count, and alkaline phosphatase. In addition, baseline SLD was included as a variable based on results from an exploratory analysis. In a process called forward-inclusion [26], each factor was added in a step-by-step manner to the base model described above, and the improvement in model fit was assessed using a likelihood ratio test. If the factor that led to the largest improvement in fit was found to have a statistically significant improvement ($P < 0.05$), then that factor was added to the model. Using the resulting new model, the process was repeated until no additional factors of significance were identified. In a subsequent process (backward-exclusion [26]), each factor was then removed step-by-step, and the original and new models assessed. If the model containing more factors had an improved fit that was highly significant ($P < 0.001$), then the factor was retained in the final model. In addition, to ensure that the prognostic factor not only improved the likelihood of the model but also improved the explanatory power of the model, we also required the factor to reduce the intersubject variability of the model parameters (η_r, η_{E10}).

Each prognostic factor or covariate was assumed to have a multiplicative effect on the parameter of interest, and continuous and binary covariates were treated slightly differently. To illustrate how a covariate was included, we show how the placebo growth rate r_i would vary with baseline SLD (y_0 , continuous) and prior sunitinib therapy (SUN, binary): for the continuous covariate, we have $r_i = r \times [y_{0i}/y_0]^\theta + N(0, \eta_r)$, where r is the median placebo growth rate for the population, y_{0i} is the baseline SLD for patient i , y_0 is the median baseline SLD, θ is the strength of the effect of baseline SLD on the placebo growth rate, and η_r denotes the intersubject variability of the population. For binary covariates, we used a similar functional form with $r_i = r \times \theta^{\text{SUN}} + N(0, \eta_r)$. Here, SUN =

1 for patients with prior sunitinib therapy and SUN = 0 otherwise.

Model qualification and simulation

Model qualification was performed by comparing clinically measured SLD with those predicted by the model, evaluating the uncertainty in parameter values, and using the model to perform a simulation of two sets of 10,000 virtual patients. For the latter, model parameters were chosen from the parameter distribution obtained in the final model, and the two sets of virtual patients simulated were: A) patients on the placebo arm before cross-over; and B) patients who maintained constant everolimus dosing throughout the study.

Model simulations of 100,000 patients were performed to estimate the mean and variability of the predicted response of patients who received placebo and for patients who received everolimus 5 mg and 10 mg continuous dosing. For each virtual patient, the fixed effects were sampled from a multivariate normal distribution based on the uncertainty of the fixed effect estimate; the random effects were sampled from a multivariate normal distribution to account for intersubject variability.

Additional file

Additional 1: Fig. A1. Tumor growth in a small number of RECORD-1 patients was not well described by model 2 with E5 ≠ E10. These included: i-iv) resistant patients (n = 4); (v) 5 mg of everolimus had an equivalent effect to 10 mg of everolimus (n = 1); (vi) tumor shrinkage during placebo treatment, but progression due to nontarget lesions (n = 1); (vii) tumor growth at 10 mg everolimus is faster than tumor growth at 5 mg everolimus (n = 1). E5, treatment effect of everolimus 5 mg daily; E10, treatment effect of everolimus 10 mg daily; SLD, sum of the longest tumor diameters.

Abbreviations

4EBP1: eukaryotic initiation factor 4E binding protein 1; AE: adverse event; CR: complete response; eIF-4E: eukaryotic initiation factor 4E; FOCE: first order conditional estimation; mRCC: metastatic renal cell carcinoma; mTOR: mammalian target of rapamycin; OS: overall survival; PBMC: peripheral blood mononuclear cells; PD: progressive disease; PFS: progression-free survival; PR: partial response; S6K1: S6 kinase 1 ribosomal protein; SD: stable disease; SLD: sum of the longest tumor diameters; VEGFr-TKI: vascular endothelial growth factor receptor-tyrosine kinase inhibitor; VPC: visual predictive check.

Competing interests

AS, WW, OC, NH, and CS are employees of Novartis Pharmaceuticals Corporation, and AC and HK are former employees of Novartis. RM has acted as a consultant to Aveo and GlaxoSmithKline, has received honoraria from Wyeth and Novartis, and has received research funding from Pfizer, Novartis, and GlaxoSmithKline.

Authors' contributions

AS, WW, AC, OC, NH, and CS participated in the conception, design and analysis of the pharmacodynamic model reported herein. RM was the Principal Investigator of the RECORD-1 study and participated in its design and in data acquisition. All authors were involved in the drafting of the manuscript, and all authors consented to its submission for publication.

Authors' information

Alison A. Carter and Hyewon Kim are former employees of Novartis.

Acknowledgments

The authors would like to thank David Lebwohl, Robert Winkler, Wing Cheung, Bill Mietlowski, Zenta Tsuchihashi, Bill Sallas, Jerry Nedelman, Gabriel Helminger, Mick Looby, and Dean Bottino of Novartis, and Karen Miller-Moslin, PhD, of ApotheCom (Yardley, PA, USA) who provided medical writing services on behalf of Novartis Pharmaceuticals Corporation.

Author details

¹Modeling & Simulation, Novartis Institutes for Biomedical Research, 45 Sidney St, Cambridge, MA, USA. ²Novartis Pharmaceuticals Corporation, East Hanover, NJ, USA. ³Novartis Pharmaceuticals Corporation, East Hanover, NJ, USA. ⁴Novartis Pharmaceuticals Corporation, East Hanover, NJ, USA. ⁵Novartis Pharma AG, Basel, Switzerland. ⁶Department of Experimental and Clinical Pharmacology, University of Minnesota, Minneapolis, MN, USA. ⁷Department of Medicine, Genitourinary Oncology Service, Memorial Sloan-Kettering Cancer Center, New York, NY, USA. ⁸Novartis Pharmaceuticals Corporation, East Hanover, NJ, USA.

Received: 6 March 2012 Accepted: 21 June 2012

Published: 23 July 2012

References

- Garnock-Jones KP, Keating GM: Everolimus: in advanced renal cell carcinoma. *Drugs* 2009, **69**:2115–2124.
- Yuan R, Kay A, Berg WJ, Lebwohl D: Targeting tumorigenesis: development and use of mTOR inhibitors in cancer therapy. *J Hematol Oncol* 2009, **2**:45–54.
- Pinto MA, Redondo SA, Espinosa AE, Zamora AP, Castelo FB, Gonzalez BM: mTOR pathway inhibition in renal cell carcinoma. *Urol Oncol* 2010, **10**:1016/j.urolonc.2009.11.008.
- Youssef TA, Fahmy MA, Koumakpayi IH, Ayala F, Al Marzooqi S, Chen G, et al: The mammalian target of rapamycin pathway is widely activated without PTEN deletion in renal cell carcinoma metastases. *Cancer* 2011, **117**:290–300.
- Romaschin AD, Youssef Y, Chow TF, Siu KW, DeSouza LV, Honey RJ, et al: Exploring the pathogenesis of renal cell carcinoma: pathway and bioinformatics analysis of dysregulated genes and proteins. *Biol Chem* 2009, **390**:125–135.
- Shaw RJ, Cantley LC: Ras, PI(3)K and mTOR signalling controls tumour cell growth. *Nature* 2006, **441**:424–430.
- O'Reilly T, McSheehy PM: Biomarker Development for the Clinical Activity of the mTOR Inhibitor Everolimus (RAD001): Processes, Limitations, and Further Proposals. *Transl Oncol* 2010, **3**:65–79.
- O'Donnell A, Faivre S, Burris HA III, Rea D, Papadimitrakopoulou V, Shand N, et al: Phase I pharmacokinetic and pharmacodynamic study of the oral mammalian target of rapamycin inhibitor everolimus in patients with advanced solid tumors. *J Clin Oncol* 2008, **26**:1588–1595.
- Taberner J, Rojo F, Calvo E, Burris H, Judson I, Hazell K, et al: Dose- and schedule-dependent inhibition of the mammalian target of rapamycin pathway with everolimus: a phase I tumor pharmacodynamic study in patients with advanced solid tumors. *J Clin Oncol* 2008, **26**:1603–1610.
- Boulay A, Zumstein-Mecker S, Stephan C, Beuvink I, Zilbermann F, Haller R, et al: Antitumor efficacy of intermittent treatment schedules with the rapamycin derivative RAD001 correlates with prolonged inactivation of ribosomal protein S6 kinase 1 in peripheral blood mononuclear cells. *Cancer Res* 2004, **64**:252–261.
- Tanaka C, O'Reilly T, Kovarik JM, Shand N, Hazell K, Judson I, et al: Identifying optimal biologic doses of everolimus (RAD001) in patients with cancer based on the modeling of preclinical and clinical pharmacokinetic and pharmacodynamic data. *J Clin Oncol* 2008, **26**:1596–1602.
- Amato RJ, Jac J, Giessinger S, Saxena S, Willis JP: A phase 2 study with a daily regimen of the oral mTOR inhibitor RAD001 (everolimus) in patients with metastatic clear cell renal cell cancer. *Cancer* 2009, **115**:2438–2446.
- Motzer RJ, Escudier B, Oudard S, Hutson TE, Porta C, Bracarda S, et al: Efficacy of everolimus in advanced renal cell carcinoma: a double-blind, randomised, placebo-controlled phase III trial. *Lancet* 2008, **372**:449–456.

14. Motzer RJ, Escudier B, Oudard S, Hutson TE, Porta C, Bracarda S, et al: **Phase 3 trial of everolimus for metastatic renal cell carcinoma: final results and analysis of prognostic factors.** *Cancer* 2010, **116**:4256–4265.
15. Therasse P, Arbuck SG, Eisenhauer EA, Wanders J, Kaplan RS, Rubinstein L, et al: **New guidelines to evaluate the response to treatment in solid tumors.** *J Natl Cancer Inst* 2000, **92**:205–216.
16. Oudard S, Thiam R, Fournier LS, Medioni J, Lamuraglia M, Scotte F, et al: **Optimisation of the tumour response threshold in patients treated with everolimus for metastatic renal cell carcinoma: Analysis of response and progression-free survival in the RECORD-1 study.** *Eur J Cancer* 2012, **10.1016/j.ejca.2012.01.027**.
17. Lavin PT: **An alternative model for the evaluation of anti tumor activity.** *Cancer Clin Trials* 1981, **4**:451–457.
18. Houk BE, Bello CL, Poland B, Rosen LS, Demetri GD, Motzer RJ: **Relationship between exposure to sunitinib and efficacy and tolerability endpoints in patients with cancer: results of a pharmacokinetic/pharmacodynamic meta-analysis.** *Cancer Chemother Pharmacol* 2010, **66**:357–371.
19. Tham LS, Wang L, Soo RA, Lee SC, Lee HS, Yong WP, et al: **A pharmacodynamic model for the time course of tumor shrinkage by Gemcitabine + Carboplatin in non-small cell lung cancer patients.** *Clin Cancer Res* 2008, **14**:4213–4218.
20. Wang W, Sung C, Dartois C, Ramchandani R, Booth BP, Rock E, et al: **Elucidation of relationship between tumor size and survival in non-small-cell lung cancer patients can aid early decision making in clinical drug development.** *Clin Pharmacol Ther* 2009, **86**:167–174.
21. Claret L, Girard P, Hoff PM, Van Cutsem E, Zuideveld KP, Jorga K, et al: **Model-based prediction of phase III overall survival in colorectal cancer on the basis of phase II tumor dynamics.** *J Clin Oncol* 2009, **27**:4103–4108.
22. Stein A, Carter A, Hollaender N, Motzer R, Sarr C: **Quantifying the effect of everolimus on both tumor growth and new metastases in metastatic renal cell carcinoma: a dynamic tumor model of the RECORD-1 phase 3 trial.** *J Clin Oncol* 2011, **29**(suppl; abstr 4602).
23. Fleming TR, Lin DY: **Survival analysis in clinical trials: past developments and future directions.** *Biometrics* 2000, **56**:971–983.
24. Mu S, Wang J, Li J, Visich J, Schaedeli-Stark F, Valente N, et al: **Modeling longitudinal tumor metrics in NHL patients treated with rituximab: application of the Norton-Simon hypothesis incorporating gompertzian growth.** Mashantucket, CT: American Conference of Pharmacometrics (ACOP); 2009.
25. Porta C, Ostanto S, Ravaud A, Climent MA, Vaishampayan U, White DA, et al: **Management of adverse events associated with the use of everolimus in patients with advanced renal cell carcinoma.** *Eur J Cancer* 2011, **47**:1287–1298.
26. Wahlby U, Jonsson EN, Karlsson MO: **Comparison of stepwise covariate model building strategies in population pharmacokinetic-pharmacodynamic analysis.** *AAPS Pharm Sci* 2002, **4**:E27.

doi:10.1186/1471-2407-12-311

Cite this article as: Stein et al.: Dynamic tumor modeling of the dose-response relationship for everolimus in metastatic renal cell carcinoma using data from the phase 3 RECORD-1 trial. *BMC Cancer* 2012 **12**:311.

Submit your next manuscript to BioMed Central and take full advantage of:

- Convenient online submission
- Thorough peer review
- No space constraints or color figure charges
- Immediate publication on acceptance
- Inclusion in PubMed, CAS, Scopus and Google Scholar
- Research which is freely available for redistribution

Submit your manuscript at
www.biomedcentral.com/submit

