

Purification and Characterization of a Low-Molecular-Weight Phospholipase A₂ from Developing Seeds of Elm¹

Ulf Ståhl*, Bo Ek, and Sten Stymne

Department of Plant Biology, P.O. Box 7080, Swedish University of Agricultural Sciences, S-750 07 Uppsala, Sweden (U.S., B.E.); and Department of Plant Breeding Research, Swedish University of Agricultural Sciences, Herman von Ehles v. 4–6, S-268 31 Svalöv, Sweden (S.S.)

Phospholipase A₂ (PLA₂) was purified about 180,000 times compared with the starting soluble-protein extract from developing elm (*Ulmus glabra*) seeds. On sodium dodecyl sulfate-polyacrylamide gel electrophoresis the purified fraction showed a single protein band with a mobility that corresponded to 15 kD, from which activity could be recovered. When analyzed by matrix-assisted laser-desorption ionization-time-of-flight mass spectrometry, the enzyme had a deduced mass of 13,900 D. A 53-amino acid-long N-terminal sequence was determined and aligned with other sequences, giving 62% identity to the deduced amino acid sequence of some rice (*Oryza sativa*) expressed sequence tag clones. The purified enzyme had an alkaline pH optimum and required Ca²⁺ for activity. It was unusually stable with regard to heat, acidity, and organic solvents but was sensitive to disulfide bond-reducing agents. The enzyme is a true PLA₂, neither hydrolyzing the *sn*-1 position of phosphatidylcholine nor having any activity toward lysophosphatidylcholine or diacylglycerol. The biochemical data and amino acid sequence alignments indicate that the enzyme is related to the well-characterized family of animal secretory PLA₂s and, to our knowledge, is the first plant enzyme of this type to be described.

PLA₂ (phosphatide 2-acylhydrolase, EC 3.1.1.4) specifically hydrolyzes glycerophospholipids at the *sn*-2 position to yield free fatty acids and lysophospholipids. Little is known about plant PLA₂s; no plant PLA₂ has been purified to any extent and no plant gene or cDNA encoding such an enzyme has been identified. The animal PLA₂s, however, are a diverse family of well-studied enzymes that are known to play important roles in a number of basic cellular processes (Waite, 1987; Dennis, 1994). They are divided into several distinct groups, groups I, II, III, and V, which belong to a class of small (13–18 kD), secretory, and extremely heat-stable enzymes having between five and eight disulfide bonds and requiring millimolar concentrations of Ca²⁺ for maximum activity. This type of PLA₂ is best known from snake venom, bee venom, and pancreatic juice, where it occurs abundantly and has a digestive role. More recently, PLA₂ has been found in high levels in

rheumatoid arthritic synovial fluid (Vadas et al., 1981; Seilhamer et al., 1989) and also at low levels in many mammalian tissues (Tischfield, 1997). The group IV enzymes are intracellular, high-M_r PLA₂s that are translocated to membranes in the presence of micromolar concentrations of Ca²⁺. This type of PLA₂ has a preference for phospholipids, with arachidonate at the *sn*-2 position, and has been suggested to be involved in signal transduction and in the initiation of eicosanoid synthesis (Dennis, 1994). In addition to these groups there is also a group of 40-kD, Ca²⁺-independent, intracellular PLA₂s specific for arachidonyl-plasmenylcholine (Dennis, 1994).

In plant tissues phospholipid-degrading enzymes other than PLA₂ have been studied in detail, such as phospholipase D (Pappan et al., 1997a, 1997b), phospholipase C (Yotsushima et al., 1993; Hirayama et al., 1995), and acyl hydrolases (Huang 1987; Sahas et al., 1994; Teissère et al., 1995). With regard to PLA₂ several studies of plant enzyme activities, in more or less crude preparations, have been reported (Moreau and Morgan, 1988; Kawakita et al., 1993; Kim et al., 1994; Roy et al., 1995). The two products of PLA₂ activity, fatty acids and LPC, have also been shown to stimulate several plasma membrane enzymes, such as H⁺-ATPase (Palmgren et al., 1988), NADH oxidases (Brighman et al., 1991) and protein kinases (Klucis and Polya, 1987; Martiny-Baron and Scherer, 1989). These have been proposed to serve as second messengers in signal transduction. Linolenic acid, the precursor of the plant-signal substance jasmonic acid (Creelman and Mullet, 1997), is thought to be liberated from phospholipids by phospholipase A or an acyl hydrolase for further metabolism into jasmonic acid. This is analogous to the synthesis of the structurally related prostaglandins from arachidonic acid in animals (Bergey et al., 1996).

Previously, we studied the formation of hydroxylated and epoxygenated fatty acids in microsomal preparations from developing oil seeds that accumulate these acids in their triacylglycerols. Both ricinoleic (12-hydroxy-octadeca-9-enoic) acid in castor bean (*Ricinus communis*) seeds and vernolic (12-epoxy-octadeca-9-enoic) acid in *Euphorbia*

¹ This research was supported by the Swedish Agricultural and Forestry Research Council, the Swedish Foundation for Strategic Research, the Swedish Farmers Research Foundation, and Metapontum Agrobios (Metaponto, Italy).

* Corresponding author; e-mail ulf.stahl@vbiol.slu.se; fax 46–18–673279.

Abbreviations: DAG, 1,2-diacyl-*sn*-glycerol; EST, expressed sequence tag; LPC, lysophosphatidylcholine; MALDI-TOF, matrix-assisted laser-desorption ionization-time-of-flight; PC, 3-*sn*-phosphatidylcholine; PLA₂, phospholipase A₂; TFA, trifluoroacetic acid.

lagascae seeds were found to be synthesized by oxygenation of acyl chains attached to phospholipids, after which the oxygenated fatty acids were selectively removed by microsomal PLA₂ activities (Bafor et al., 1991, 1993; Ståhl et al., 1995). It was further shown that microsomal fractions from developing seeds of *Cuphea procumbens* and elm (*Ulmus glabra*), which accumulate mainly capric (decanoic) acid in their triacylglycerols, had PLA₂ activities with pronounced selectivities for C₈–C₁₂ fatty acids (Ståhl et al., 1995). The developing seed PLA₂ activities were proposed to be involved in the channeling of these uncommon fatty acids from the membrane lipids into the storage lipids. We have also found PLA₂ activities specific for phospholipids with oxygenated acyl groups in microsomal preparations from plant tissues that are not involved in the accumulation of such fatty acids, and we proposed that such activities are part of a general repair mechanism after oxidative damage to membranes (Banas et al., 1992; Bafor et al., 1993).

With the intention to characterize and purify one of the acyl-selective PLA₂s in microsomal preparations of developing oil seeds that accumulate uncommon fatty acyl groups, we initiated the purification of the medium-chain-selective PLA₂ activity found in microsomal fractions of developing elm seed. We achieved a 30,000-fold purification of the main PLA₂ activity found in detergent-solubilized microsomes, as communicated in a preliminary report (Ståhl et al., 1997). However, the low abundance of the enzyme and limitations in the collection of material prevented us from further purification to homogeneity of this low *M_r* PLA₂. From the present study we report the purification to homogeneity and the characterization of a biochemically related, soluble PLA₂ from the same tissue and show that this enzyme is related to the low-*M_r* secretory PLA₂s found in various animal tissues.

MATERIALS AND METHODS

[1-¹⁴C]Palmitic acid, [1-¹⁴C]oleic acid, and 1,2-[1-¹⁴C]dipalmitoyl-PC were purchased from Amersham. [1-¹⁴C]Capric acid, 1-palmitoyl-LPC, palmitic acid, oleic acid, capric acid, PLA₂ (from cobra [*Naja naja kaouthia*] venom), and phospholipase C (from *Bacillus cereus*) were obtained from Sigma. Lubrol PX (Thesit) was obtained from Boehringer Mannheim. Q-Sepharose Fast-Flow, Superose 12 (10/30 column) and μ RPC SC C₂/C₁₈ (2.1/10 column) were from Pharmacia.

Radioactive fatty acids were adjusted to a specific radioactivity of 167 Bq/nmol by dilution with nonradioactive fatty acids before used in [¹⁴C]acyl-PC synthesis. 1-Palmitoyl-2-[¹⁴C]acyl-PC substrates were synthesized by acylating TFA anhydrides of the ¹⁴C-labeled fatty acids to palmitoyl-LPC by the method described by Kanda and Wells (1981). 1-Palmitoyl-2-[¹⁴C]palmitoyl-DAG was prepared by treatment of 1-palmitoyl-2-[¹⁴C]palmitoyl-PC with commercial phospholipase C. The products were purified on silica-gel TLC plates before used in assays.

Seeds from elm (*Ulmus glabra*) trees were collected from local trees at the mid to late stage of seed development (i.e. when the seed coats were partly filled and the seed wings were still green). The seed coats were removed and the

white embryos were immediately frozen in liquid N₂ and stored at –80°C.

Assays of PLA₂ Activity

PLA₂ assays were done using radioactive phospholipids dispersed in mixed micelles of the nonionic detergent lubrol PX as follows: ¹⁴C-Acyl substrate (1–50 nmol per assay) dissolved in chloroform was taken to dryness under a stream of N₂ and solubilized in assay buffer (50 mM Tris-HCl, pH 8.0, 10 mM CaCl₂, and 0.06% [w/v] lubrol PX) by incubation at 70°C for 5 to 10 min and mixed thoroughly. In standard assays, enzyme fractions (0.5–10 μ L) were incubated at 30°C for 5 to 30 min with 5 or 10 nmol of 1-palmitoyl-2-[¹⁴C]palmitoyl-PC in a total volume of 50 μ L. The reaction was stopped by the addition of 400 μ L of chloroform:methanol:acetic acid (50:50:1, v/v) followed by 150 μ L of water to yield a two-phase system, according to the method of Bligh and Dyer (1959). The samples were mixed thoroughly and centrifuged at 10,000g for 1 min.

Assays of PLA₂ Activity from SDS-PAGE

Chromatographed SDS-PAGE (ExelGel 8–18%, Pharmacia) lanes (not fixed) were divided in 2- to 3-mm-wide pieces and placed in Eppendorf tubes. Proteins were eluted from the gel pieces in 400 μ L of 20 mM Tris, pH 8.0, containing 0.5% (w/v) SDS by rotating the tubes end over end for 16 h at 37°C. The eluates were concentrated to 100 μ L in a SpeedVac concentrator (Savant, Farmingdale, NY) and the proteins were precipitated with ethanol/chloroform (Wessel and Flügge, 1984) to remove the SDS. Air-dried pellets were solubilized in 150 μ L of assay buffer, and assays were initiated by adding 5 nmol of 1-palmitoyl-2-[¹⁴C]palmitoyl-PC solubilized in 50 μ L of assay buffer. The assays were performed for 3 h at 30°C and terminated and extracted as described above.

Analytical Procedures

The lipid-containing chloroform phases from PLA₂ assays were applied to minicolumns of silica gel (about 40 mg of silica gel) and the columns were rinsed with an additional 400 μ L of chloroform. The eluates from the silica columns, which contained the free ¹⁴C-fatty acids, were collected into scintillation vials. The radioactivity was determined by liquid-scintillation counting after addition of 6 mL of toluene:ethanol (2:1, v/v) containing 0.4% (w/v) of 2(1-butylphenyl)-5-(4-biphenyl)-1,3,4-oxadiazole as a scintillant.

When, in addition to free fatty acids, radioactive complex lipids were to be monitored, the chloroform-soluble lipids were separated on silica-gel TLC plates (Silica 60, Merck, Darmstadt, Germany). The plates were developed with chloroform:methanol:acetic acid:water (170:30:20:7, v/v) when PC or LPC was used as the substrate and with hexane:diethylether:acetic acid (70:30:1, v/v) when DAG was the substrate. Unsaturated lipids were located by staining with I₂ vapor, whereas saturated lipids were visualized by spraying with water. Lipid areas and the rest of

the lanes were removed from the plates and assayed for radioactivity by scintillation counting as described above.

Purification of the Elm PLA₂

Frozen, developing elm embryos, 60 g, were homogenized with a mortar and pestle and subsequently with an Ultra-Turrax (Janke and Kunkel, Staufen, Germany) in 600 mL of ice-cold 100 mM KH₂PO₄ buffer, pH 7.2, containing 0.33 M Suc. The homogenate was filtered through two layers of Miracloth (Calbiochem) and centrifuged at 10,000g for 12 min. The supernatant was filtered through one layer of Miracloth and centrifuged at 100,000g for 90 min. The 100,000g supernatant was either used immediately or stored at -20°C.

The 100,000g supernatant was brought to 55% (w/v) with (NH₄)₂SO₄ and stirred at 4°C for 1 h. Precipitated proteins were pelleted by centrifugation at 10,000g for 10 min and resuspended in 130 mL of 50 mM diethanolamine buffer, pH 8.5. Ice-cold acetone was added to a final concentration of 45% (v/v) after which the extract was left at 4°C for 30 min. Precipitated proteins were removed by centrifugation for 10 min at 10,000g. The resulting supernatant was dialyzed against 20 volumes of 20 mM piperidine, pH 11.0, overnight and then applied to a Q-Sepharose Fast-Flow column (1 × 10 cm) equilibrated in 20 mM piperidine, pH 11.0. The column was eluted with a linear NaCl gradient from 100 to 500 mM in 20 mM piperidine, pH 11.0, at a flow rate of 2 mL/min. Three-milliliter fractions were collected and assayed for PLA₂ activity. A single broad peak of activity was eluted at an NaCl concentration of 200 to 300 mM.

Peak fractions were pooled, concentrated on Centricon-10 to 0.6 mL, and chromatographed in three separate runs on a Superose 12 gel-filtration column (1.0 × 30.0 cm) in 20 mM Tris-HCl, pH 8.0, with 150 mM NaCl at a flow rate of 0.4 mL/min. Fractions (0.5 mL) were collected and assayed for PLA₂ activity. Peak fractions from all three runs were pooled, and PLA₂ was further purified using a C₄ reverse-phase HPLC column (0.46 × 10.0 cm, Vydac, Hesperia, CA) equilibrated with 0.1% TFA. The column was developed at 0.4 mL/min with a 30-min gradient (40–55% of acetonitrile in 0.1% TFA) and peaks, monitored at 214 and 280 nm, were collected manually. Collected fractions from four separate runs were assayed for PLA₂ activity. Peak fractions were pooled and the acetonitrile content was reduced by evaporation in a SpeedVac concentrator. The PLA₂ was then purified to apparent homogeneity on a reverse-phase

C₂/C₁₈ column (0.21 × 10.0 cm) equilibrated in 0.1% TFA and developed at 100 μL/min with a 60-min gradient (30–60% acetonitrile in 0.1% TFA) using a SMART system (Pharmacia). Peaks monitored at 214 nm were automatically collected and then assayed for PLA₂ activity. The PLA₂ activity eluted as a discrete peak in the gradient at about 48% acetonitrile.

SDS-PAGE

Protein fractions were, if necessary, concentrated by evaporation in a SpeedVac and precipitated with ethanol/chloroform according to the method of Wessel and Flügge (1984). Samples (final volume 20 μL) in 50 mM Tris-acetate, pH 7.5, containing 1% SDS (w/v), with or without 10 mM DTT, were heated to 95°C for 5 min, centrifuged for 5 min at 13,000g, and then loaded onto a horizontal 8 to 18% gradient polyacrylamide gel (ExelGel SDS, Pharmacia) with a 33-mm stacking zone and a 77-mm separating zone. Electrophoresis was performed in a Multiphor II unit (Pharmacia) at 15°C for 80 min at 600 V and stained with colloidal Coomassie blue (Neuhoff et al., 1988) or with silver according to the manufacturer's instructions.

Molecular Mass Determination by MALDI-TOF MS

Native or reduced and iodoacetamide-alkylated-purified PLA₂ was mixed with matrix 2,5-dihydroxybenzoic acid (14 mg/mL) in a 1:1 ratio (v/v). From each sample 1-μL aliquots were deposited on gold-covered steel sample mesa and dried in a vacuum. The molecular masses of native or reduced and alkylated PLA₂ were analyzed in the positive mode on an LDI-1700XP instrument (Linear Scientific, Inc., Reno, NV) equipped with an N₂ laser (339 nm) using 7 μJ of energy.

N-Terminal Sequence Analysis and Similarity Searches in Databases

About 1.8 μg of purified PLA₂ was reduced by incubation with 0.1 M Tris-HCl, pH 8.5, containing 8 M guanidine-HCl, 10 mM EDTA, and 20 mM DTT at 56°C for 30 min and then the Cys residues were alkylated with 20 mM iodoacetamide for 60 min at room temperature. Both reduction and alkylation were performed under an Ar atmosphere. The reduced and alkylated PLA₂ was desalted on a reverse-phase C₂/C₁₈ column (0.21 × 10 cm) equilibrated with 0.1% TFA in water and eluted at 100 μL/min with a 30-min

Table I. Purification of soluble PLA₂ from developing elm seeds

Purification Step	Protein mg	Total Activity nmol/min	Specific Activity nmol min ⁻¹ mg ⁻¹	Purification -fold	Yield %
100,000g Supernatant	3340	833	0.25	1	100
(NH ₄) ₂ SO ₄ Pellet	1060	563	0.53	2	68
Acetone supernatant	150	780	5.2	21	94
Q-Sepharose Fast Flow	24	420	17.5	70	50
Gel filtration	3.8	263	69.2	277	32
C ₄ -HPLC	0.09	173	1,922	7,690	21
C ₂ /C ₁₈ -SMART	0.003	133	44,330	177,300	16

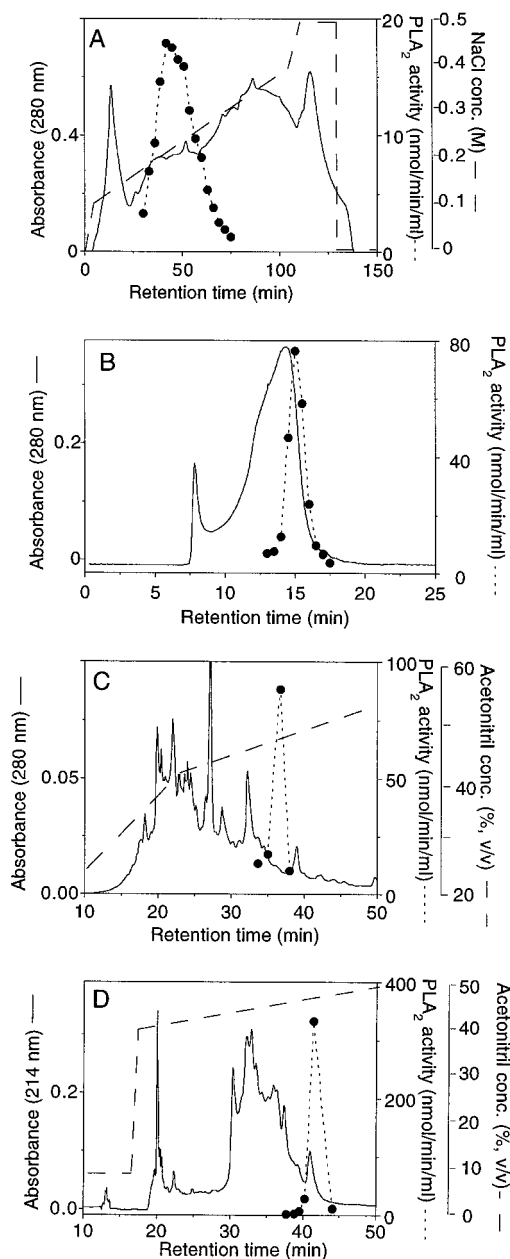


Figure 1. Elution profiles of protein (—) and PLA₂ activity (----) from the different chromatographic steps in the purification of the elm PLA₂: Q-Sepharose Fast Flow (A), Superose 12 (B), C₄ reverse-phase HPLC (C), and C₂/C₁₈ reverse-phase SMART (D).

acetonitrile gradient (30–60%) using a SMART chromatographic station. Peaks were monitored at 214 and 280 nm, and automatic peak collection was used. Amino acid sequencing was performed on a sequencer (model ABI 476A, Applied Biosystems/Perkin-Elmer) according to the manufacturer's instructions. The N-terminal amino acid sequence was used as a query for the Basic Local Alignment Search Tool (BLAST) at the National Center for Biotechnology Information (Bethesda, MD), and the "blastp" search program was used against the Nonredundant GenBank CDS translations+PDB+SwissProt+SPupdate+PIR, and

the "tblastn" search program against nonredundant GenBank+EMBL+DDBJ+PDB sequences and the Nonredundant Database of GenBank EST Division.

Determination of Protein Concentration

The protein concentrations in fractions of the purification scheme were determined by the method of Bradford (1976), except in the fractions from the two last purification steps, the determination was done by comparing eluted peak areas monitored at 214 nm with peak areas of standard proteins (Buck et al., 1989), and the staining intensities of the sample protein band were compared with known standards in colloidal Coomassie blue-stained SDS-PAGE gels.

RESULTS

Purification of PLA₂

Eighty percent of the total PLA₂ activity in a crude extract from developing seed embryos was recovered in the 100,000g supernatant after centrifugation (data not shown). This fraction was used for further purification according to the procedure summarized in Table I. The procedure included (NH₄)₂SO₄ fractionation, acetone precipitation, and column chromatography on Q-Sepharose Fast Flow (anion-exchange), Superose 12 (gel filtration), and C₄ and C₂/C₁₈ reverse-phase columns (Fig. 1). Several of the purification steps were achievable because of the extreme stability of the PLA₂ in organic solvents at a low pH. Both the precipitation with acetone 45% (v/v) and reverse-phase chromatography with 0.1% (v/v) TFA and elution with an acetonitrile gradient are extremely harsh conditions that denature most enzymes. These steps were very useful for the PLA₂ purification, giving a high degree of purification and little loss in activity. The final purification, to apparent homogeneity, was achieved with a C₂/C₁₈

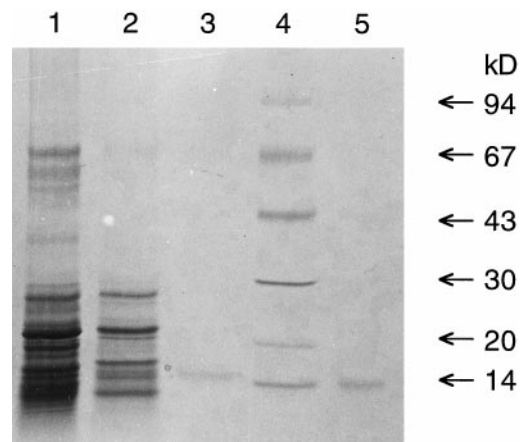


Figure 2. SDS-PAGE analysis of fractions from the three last purification steps of the elm PLA₂ purification, along with a commercial PLA₂ from cobra venom. Lane 1, Twenty-five micrograms of Superose 12 eluate; lane 2, 2 μ g of C₄-reverse phase eluate; lane 3, 0.1 μ g of C₂/C₁₈ reverse-phase eluate; lane 4, molecular size markers; and lane 5, 0.1 μ g of cobra venom PLA₂. Samples were reduced with DTT and separated on an 8 to 18% gradient gel.

column; PLA₂ activity coincided with a discrete protein peak eluted at an acetonitrile concentration of about 48% (Fig. 1D). Based on specific activity the PLA₂ was purified about 180,000-fold compared with the 100,000g supernatant, with a total recovery of 16% (Table I).

Molecular Mass of Purified PLA₂

The purified PLA₂ fraction showed one band with a molecular mass of about 15 kD when subjected to SDS-PAGE on an 8 to 18% gradient gel under reducing conditions and stained with colloidal Coomassie blue (Fig. 2). After electrophoresis and under nonreducing conditions, PLA₂ activity could be recovered and was found to coincide with the 15-kD band (Fig. 3). A similar amount of snake venom PLA₂ was included in adjacent lanes for a comparison and gave about the same recovery of activity (Fig. 3). For a more precise molecular mass determination a MALDI-TOF MS analysis was performed. The purified fraction gave a major peak with a molecular mass of 13,900 D and two minor peaks with masses of 13,200 and 12,700 D (Fig. 4). With alkylation of Cys residues in the purified fraction all three peaks gained about 700 to 800 mass units, indicating the presence of 12 to 14 Cys residues (data not shown).

Characterization of Purified PLA₂ Activity

The enzyme exhibited optimal activity at a pH between 8.0 and 9.0 and had no activity below pH 5.0 (Fig. 5A). EGTA (1 mM) totally abolished activity (data not shown), indicating an absolute requirement for Ca²⁺. Optimal concentration of CaCl₂ for activity was as high as 10 to 15 mM,

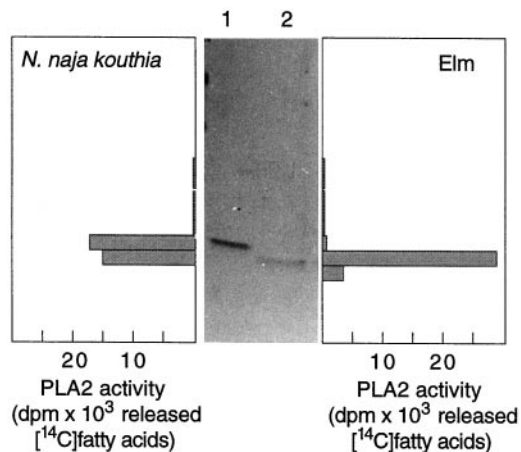


Figure 3. Recovery of activity from elm and cobra PLA₂ from a SDS-PAGE gel. Duplicate samples of 50 ng of PLA₂ from cobra venom and of purified elm-seed PLA₂, unreduced, were separated on an 8 to 18% gradient gel. One lane with cobra venom and one lane with elm PLA₂ were immediately sliced into 2- to 3-mm-wide pieces, from which proteins were eluted, precipitated, and assayed for PLA₂ activity, as described in "Materials and Methods." Remaining lanes were stained overnight with colloidal Coomassie blue. Lane 1, Cobra venom PLA₂; lane 2, elm seed PLA₂.

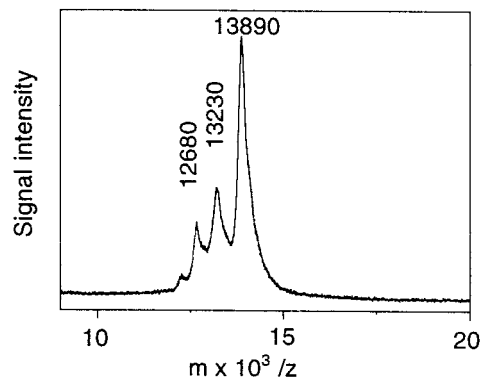


Figure 4. Molecular mass determination of purified PLA₂ fraction by MALDI-TOF MS. Purified elm PLA₂ (1–2 pmol/μL) was analyzed in a MALDI-TOF MS instrument, as described in "Materials and Methods."

although 0.5 mM was sufficient to achieve 50% of maximal activity (Fig. 5B).

The purified enzyme was tested for its specificity with respect to the *sn* position in PC by incubation with 1-palmitoyl-2-[¹⁴C]palmitoyl-PC and 1,2-[¹⁴C]dipalmitoyl-PC for an extended incubation time, followed by an analysis of ¹⁴C-labeled hydrolysis products on TLC plates. No radioactive LPC was formed when the enzyme was incubated with 1-palmitoyl-2-[¹⁴C]palmitoyl-PC, indicating that the enzyme was not active against the *sn*-1 position of PC (Table II). With 1,2-[¹⁴C]dipalmitoyl-PC as a substrate about equimolar amounts of radioactive fatty acids and LPC were formed (Table II), confirming that the purified enzyme does not possess phospholipase B activity. The purified PLA₂ had no activity toward the neutral acyl lipid 1-palmitoyl-2-[¹⁴C]palmitoyl-DAG or the lysophospholipid 1-[¹⁴C]oleoyl-LPC (Table II).

The acyl preferences for the purified elm PLA₂ were analyzed by measuring activity with 1-palmitoyl-2-¹⁴C-acyl-PC, with caproyl, palmitoyl, and oleoyl groups at the *sn*-2 position. Similar assays with cobra PLA₂ were included in this experiment for a comparison. The elm enzyme was found to hydrolyze the caproyl and oleoyl groups at about twice the rate of the palmitoyl groups, whereas the cobra enzyme hydrolyzed all three acyl groups at about the same rate (Table III). The specific activity of the purified elm enzyme with the preferred substrate 1-palmitoyl-2-[¹⁴C]caproyl-PC was found to be 90 μmol min⁻¹ mg⁻¹.

The elm PLA₂ was stable both in organic solvents and at extreme pH conditions (see above) and was also extremely heat stable. Incubations with the purified enzyme at 100°C for 5 min did not affect activity, whereas a 30-min incubation at this temperature caused only a 40% decrease in activity (results not shown). DTT (5 mM) or 1% (v/v) β-mercaptoethanol were, however, found to completely abolish activity (results not shown), indicating the likely presence of structurally important disulfide bonds.

Time-course incubation of about 1 ng of purified PLA₂ with 1-palmitoyl-2-[¹⁴C]palmitoyl-PC at a concentration range of 0.02 to 1 mM (with 1 mM lubrol PX) showed linear

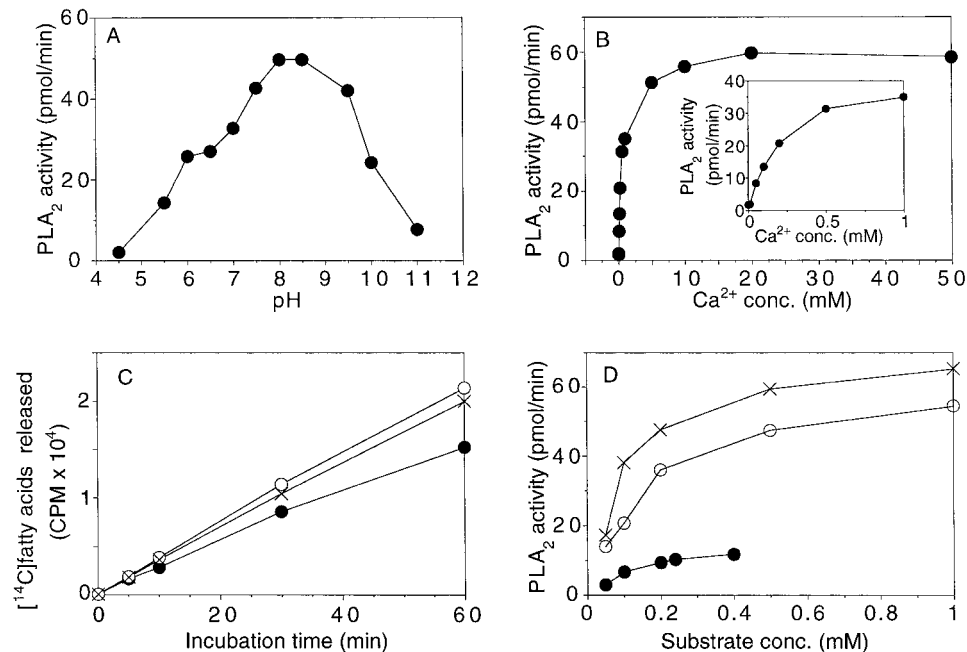


Figure 5. A, The effect of pH. Incubations were carried out with 1 ng of purified PLA₂, 0.2 mM 1-palmitoyl-2-[¹⁴C]palmitoyl-PC, 1 mM lubrol PX, and 10 mM CaCl₂ in 75 mM buffer at 30°C for 15 min in a final volume of 50 μL. Buffers used were: acetic acid, pH 4.5 to 5.5; Mes, pH 5.5 to 6.5; Bis-Tris propane, pH 6.5 to 9.5, and Caps, pH 9.5 to 11. Bis-Tris propane, 1,3-bis(Tris[hydroxymethyl]methylamino)propane; Caps, 3-(cyclohexylamino)-1-propanesulfonic acid. B, The effect of Ca²⁺ concentration on PLA₂ activity. Incubations were carried out with 1 ng of purified PLA₂ in 50 mM Tris-HCl buffer, pH 8.0, in the presence of 0.2 mM 1-palmitoyl-2-[¹⁴C]palmitoyl-PC, 1 mM lubrol PX, and with Ca²⁺ concentrations as indicated in the figure in a final volume of 50 μL at 30°C for 15 min. C, Time-course incubations of purified PLA₂ with and without BSA. Purified PLA₂, 0.5 ng, was incubated in the presence of 0.2 mM 1-palmitoyl-2-[¹⁴C]palmitoyl-PC, 1 mM lubrol PX, 10 mM CaCl₂, 50 mM Tris-HCl, pH 8.0, in the absence of BSA (●), with 50 μg of BSA (○), or with 250 μg of BSA (×), in a final volume of 50 μL for the indicated times at 30°C. D, Effect of substrate concentration at various lubrol PX/phosphatidylcholine molar ratios. Purified PLA₂, 1 ng, was incubated in the presence of 10 mM CaCl₂, 50 mM Tris-HCl, pH 8.0, 0.02 to 1 mM 1-palmitoyl-2-[¹⁴C]palmitoyl-PC without detergent (●) or with a lubrol PX/phosphatidylcholine molar ratio of 2 (○) or 6 (×) in a final volume of 50 μL for 10 min at 30°C. conc., Concentration.

activity for about 10 to 15 min (data not shown). The inclusion of 50 or 250 μg of BSA in the assay cocktail prolonged the linearity of time-course incubations substantially (Fig. 5C), possibly indicating a decreased product inhibition because of the scavenging of the produced free fatty acids. Substrate-saturation curves of the purified PLA₂ without detergent present, and at two fixed detergent/substrate molar ratios (2 and 6), showed that the activity is greatly increased by the dispersion of the substrate in mixed micelles and that the detergent/PC molar ratio strongly affects activity (Fig. 5D). Under the assay conditions used, the enzyme is saturated with about 1 mM substrate.

N-Terminal Sequence Analysis

About 1.8 μg of purified PLA₂ (130 pmol) was reduced and alkylated with iodoacetamide and the N-terminal sequence was determined by automatic Edman degradation. Fifty-seven cycles were run, with an initial yield of approximately 17% and a repetitive yield of 94.3% for the 36 first cycles. The 53 first cycles gave a clear, single first-choice amino acid, and the amino acid sequence was read manually to be: 1-LNVGVQATGT—SISVKGKCSR—

KCESEFCSPV—PFLRYGKYCG—LLYSGCPGK—PCD—53. A low, double-background signal (about 10% of the main signal) could be read partly at about 25 cycles and was likely to be two degradation products of the main sequence; the two cleavage sites in the native protein were inferred from this signal to be between residues 7 and 8 and between residues 13 and 14 (data not shown). The main N-terminal amino acid sequence was used in a BLAST search (see "Materials and Methods") and the best aligned sequences found were EST-sequences from rice

Table II. Specificity of purified elm seed PLA₂

Purified elm PLA₂, 2 ng, was incubated for 30 min with 5 nmol of radioactive substrate under standard assay conditions.

Substrate	Recovered ¹⁴ C Radioactivity	
	Fatty acids	LPC
	% of total	
1-Palmitoyl-2-[¹⁴ C]palmitoyl-PC	48	0.3
1,2-[¹⁴ C]Dipalmitoyl-PC	34	30
1-Palmitoyl-2-[¹⁴ C]palmitoyl-DAG	0	—
1-[¹⁴ C]Oleoyl-LPC	0.2	99.8

Table III. Acyl specificities of the purified elm seed and cobra PLA₂s

Purified elm or cobra PLA₂, 1 ng, was incubated for 10 min with 25 nmol of radioactive substrate under standard assay conditions.

Substrate	PLA ₂ Activity	
	Elm PLA ₂	Cobra PLA ₂
	<i>pmol/min</i>	
1-Palmitoyl-2-[¹⁴ C]palmitoyl-PC	39	48
1-Palmitoyl-2-[¹⁴ C]oleoyl-PC	77	40
1-Palmitoyl-2-[¹⁴ C]caproyl-PC	93	51

(*Oryza sativa*; accession nos. C27540, D47320, D47653, and D47724). The C27540 sequence originated from a callus mRNA and the others originated from 8-d-old shoots. All four rice clones have nearly the same nucleotide sequences. An alignment of the N-terminal amino acid sequence of the elm PLA₂ with the deduced amino acid sequence from C27540 and D47653 is shown in Figure 6. The overall identity is 62% and it is noteworthy that the positions of all six Cys residues in the elm enzyme sequence are conserved in the rice EST clones.

The PSORT World Wide Web server predicted a 25-amino acid-long signal peptide for export through the Golgi in the rice-shoot EST sequences. The predicted cleavage site between Gly-25 and Leu-26 coincides with the start of the aligned elm PLA₂ N-terminal amino acid sequence (Fig. 6). The rice callus EST sequence starts in the middle of the predicted signal peptide. A region in the amino acid sequence of the animal secretory PLA₂s, called the Ca²⁺-binding loop, is found in the N-terminal sequences of both the elm PLA₂ and the putative rice PLA₂s (Fig. 6). The active-site region of animal secretory PLA₂s was also found in the putative rice PLA₂s (Fig. 6) but is downstream of the elm N-terminal sequence. Of the 17 highly conserved amino acids that are common to all animal secretory PLA₂s (Chen et al., 1994b), 10 are present in the N-terminal part of the group I and II PLA₂s, which has been aligned in Figure 6. Of these 10, 9 are found in the putative rice PLA₂ sequences.

DISCUSSION

The purification to homogeneity of a soluble PLA₂ from developing elm seeds is, to our knowledge, the first puri-

fied PLA₂ enzyme from a plant. The amount of this enzyme is extremely low in the plant tissue and a purification factor of 180,000-fold was needed to obtain a homogenous protein, as judged by SDS-PAGE. A crucial part of the purification protocol was the use of reverse-phase chromatography, which has also been used successfully in the purification of several secretory PLA₂s from animal tissues (Tojo et al., 1984; Forst et al., 1986; Kramer et al., 1989).

The purified protein appeared homogeneous when analyzed by SDS-PAGE, and activity recovered from unreduced samples coincided with a single protein band with a molecular mass of 15 kD. A positive control of PLA₂ from cobra venom showed that the method of recovering PLA₂ activity from unreduced SDS-PAGE gels also functioned well for animal secretory PLA₂, with a comparable recovery of activity. When analyzed by MALDI-TOF MS, the purified fraction gave a single major peak of 13,900 D and two minor peaks of 13,200 and 12,700 D. All three proteins gained about the same amount of mass after alkylation of Cys residues, indicating 12 to 14 Cys residues in each protein. The fact that all three proteins have a similarly high number of Cys residues suggests that they are related, which was also strongly supported by the N-terminal amino acid sequencing, in which a background signal gave a sequence implying that these minor proteins were proteolytic products of the major protein. The calculated reduction in molecular mass from the native protein caused by these cleavages corresponded to about 690 and 1230 mass units, respectively. These figures matched the molecular mass differences between the major and the two minor peaks obtained by MALDI-TOF MS of the purified fraction. The main signal in the N-terminal amino acid sequencing of the reduced and alkylated purified protein yielded a 53-residue-long sequence. When used as a query for the BLAST program at the National Center for Biotechnology Information, the N-terminal amino acid sequence gave best matches with the deduced amino acid sequences of some rice EST clones. The general identity score obtained was 62%, indicating that they are closely related. The general identity is highest from residue 32 of the elm N-terminal sequence and downstream. Only 2 of the 21 last amino acid residues in the elm N-terminal sequence are different in the rice sequences. This highly conserved area in the elm and putative rice PLA₂s includes the conserved Ca²⁺-binding

	1				50					89	
N-terminal	-----	-----	-----	LN	GV	QATGTSISVG	KGCSRKCESE	FCSVPPFLRY	GKYCGLLYSG	CPGEKPCD--	-----
D47653	MRFFLKLAPR	CSVLLLLLLV	TASRQLNIG-	DL	LGGSTPAKD	QGCSTRTCESQ	FCTIAPLLRY	GKYCGILYSG	CPGERPCDGX	DGXCMVHDH	
C27540		LLLLV	TASRGLNIG-	DL	LGGSTPAKD	QGCSTRTCESQ	FCTIAPLLRY	GKYCGILYSG	CPGERPCDAL	DACCMVHDH	
Consensus			LN	G	G	GCSR CES	FC P LRY	GKYCG LYSG	CPGE PCD		
Class I	-----	-----	-----	-----	NLYQ	FKNMIKCTVP	SRSWDFADY	GCHCGRG---	-GSGT'PVDDL	DRCCQVHDN	
Class II	-----	-----	-----	-----	NLVN	FHRMIKLTGT	KEAALSYGFY	GCHCGVG---	-GRGSPKDAT	DRCCVTHDC	
								* * * * *		* * * * *	
								Ca ²⁺ -binding site		active site	

Figure 6. Alignment of the N-terminal amino acid sequence of the purified elm PLA₂ with the deduced amino acid sequences of the rice EST sequences D47653 and C27540 (accession nos.) and the 49 first N-terminal amino acids of animal secretory group I (cobra) and group II (human synovial fluid) PLA₂. The last amino acid in the predicted signal peptide (certainty 0.76 by PSORT World Wide Web server) of the D47653 sequence is underlined. The consensus line shows identical amino acids for the three plant sequences. Stars denote amino acid residues that are conserved among all animal secretory PLA₂s (Chen et al., 1994b).

loop motif of animal secretory PLA₂s and a short stretch between the Ca²⁺-binding loop and the active-site region of animal secretory PLA₂s. Furthermore, all six Cys residues that were found in the elm N-terminal sequence are conserved in the rice sequences. In animal secretory PLA₂s, the Cys residues, in addition to the Ca²⁺-binding loop and the active-site region, are known to be conserved within the different subgroups (Dennis, 1994).

When the elm and putative rice PLA₂ sequences are compared with sequences of animal secretory PLA₂s, the general identity scores are not very high. However, the catalytically important motifs of animal secretory PLA₂s, the Ca²⁺-binding loop and the active-site motifs, are both found in the rice sequences. The active site is positioned downstream of the elm N-terminal sequence. Only one of the Cys residues found outside of the catalytic motif in the elm enzyme is conserved in animal PLA₂ sequences. This might indicate that, although the catalytic areas of both plant and animal plant PLA₂s are conserved, the overall three-dimensional structure and the disulfide arrangement outside of these areas might be quite different. This has been shown to be the case for the structural relationship between bee venom and animal secretory group I and II PLA₂s (Scott et al., 1990).

The biochemical and catalytic properties of the elm PLA₂ are similar to those of secretory PLA₂s found in animal tissues. Well-established properties of secretory PLA₂s are the following: molecular mass of 13 to 15 kD; absolute requirement for Ca²⁺ for activity with an optimal concentration in the millimolar range; stability to heat, acid conditions, and organic solvents but sensitivity to disulfide-reducing agents such as DTT and β-mercaptoethanol; and specificity for the *sn*-2 position of phospholipids with no activity toward neutral lipids. The animal secretory PLA₂s are one of the best-studied classes of enzymes, and the basis of their catalytic activities has been explained in great detail. Ca²⁺, which is bound to a conserved amino acid region called the "Ca²⁺-binding loop," has been shown to participate in the catalytic site by stabilizing the transition state (Scott et al., 1990). The extreme stability of the enzyme is due to the high number of disulfide bonds giving it a cross-linked architecture. The N-terminal sequence of the elm PLA₂ is rich in Cys residues, and the MS data indicate the likely presence of six disulfide bridges in the entire protein. Most of the animal secretory PLA₂s have seven disulfide bonds, although recent findings have shown PLA₂s with six or eight (Chen et al., 1994a, 1994b).

The biochemical similarity between the elm PLA₂ and the animal PLA₂s (the latter being extracellular enzymes), as well as the homology of the elm enzyme with the rice putative PLA₂s (which have putative signal peptide sequences for secretion), indicate that the elm enzyme is likely to be a secreted protein. Our original suggestion for the physiological role of PLA₂ activities in developing seeds was the removal of unusual fatty acids from membrane lipids for their subsequent incorporation into triacylglycerols (Ståhl et al., 1995). The triacylglycerol synthesis is believed to take place on the cytosolic side of ER membranes, and an involvement of PLA₂ in this metabolism would require a cytosolic or ER membrane-bound localiza-

tion. However, disulfide bonds are not expected to occur in a protein that is fully exposed to the reducing conditions of the cytosol (Davidson and Dennis, 1990). Furthermore, the pronounced acyl specificity that we found for the PLA₂ activity in microsomal preparations of the developing elm seeds (Ståhl et al., 1995) was not observed for the purified enzyme. The purified elm PLA₂ hydrolyzes PC with caproyl groups only 2 times faster than with palmitoyl groups.

The secretion of a protein out to the cell wall would be a translocation to an acidic environment with a pH of 5.0 to 6.0. The purified elm PLA₂, like most animal secretory PLA₂s, has an alkaline pH optimum and minimal activity below pH 6.0. The elm enzyme, if it was secreted, would most likely be inactive in the cell wall. It is therefore difficult to speculate about the function of this type of enzyme in plant tissues. In animal tissues secretory, non-pancreatic PLA₂s have been studied intensively during the last decade, but their functions have not been conclusively established. Nevertheless, the identification of plant PLA₂ enzymes and genes, and studies of their patterns of occurrence and expression, will yield new information that certainly will help us to understand their function in plant tissues.

ACKNOWLEDGMENTS

Professor Lennart Kenne, Dr. Suresh Gohil, and Susanna Broberg (Department of Chemistry, Swedish University of Agricultural Sciences) are acknowledged for help with MALDI-TOF MS analysis.

Received December 1, 1997; accepted February 6, 1998.
Copyright Clearance Center: 0032-0889/98/117/0197/09.

LITERATURE CITED

- Bafor M, Smith MA, Jonsson L, Stobrt AK, Stymne S (1991) Ricinoleic acid biosynthesis and triacylglycerol assembly in microsomal preparations from developing castor-bean endosperm. *Biochem J* **280**: 507-514
- Bafor M, Smith MA, Jonsson L, Stobart AK, Stymne S (1993) Biosynthesis of vernoleate (cis-12-epoxyoctadeca-cis-9-enoate) in microsomal preparations from developing endosperm of *Euphorbia lagascae*. *Arch Biochem Biophys* **303**: 145-151
- Banas A, Johansson I, Stymne S (1992) Plant microsomal phospholipases exhibit preference for phosphatidylcholine with oxygenated acyl groups. *Plant Sci* **84**: 137-144
- Bergey DR, Howe GA, Ryan CA (1996) Polypeptide signaling for plant defensive genes exhibits analogies to defense signaling in animals. *Proc Natl Acad Sci USA* **93**: 12053-12058
- Bligh EG, Dyer WJ (1959) A rapid method of total lipid extraction and purification. *Can J Biochem Physiol* **37**: 911-917
- Bradford MM (1976) A rapid and sensitive method for the quantitation of microgram quantities of protein utilizing the principle of protein-dye binding. *Anal Biochem* **72**: 248-254
- Brighman AO, Zhu XZ, Morrè DJ (1991) Activation of plasma membrane NADH oxidase activity by products of phospholipase A. *Plant Physiol* **96**: 1314-1320
- Buck MA, Olah TA, Weitzman CJ, Cooperman BS (1989) Protein estimation by the product of integrated peak area and flow rate. *Anal Biochem* **182**: 295-299
- Chen J, Engle SJ, Seilhamer JJ, Tischfield JA (1994a) Cloning and recombinant expression of a novel human low molecular weight Ca²⁺-dependent phospholipase A₂. *J Biol Chem* **269**: 2365-2368

- Chen J, Engle SJ, Seilhamer JJ, Tischfield JA (1994b) Cloning and characterization of novel rat and mouse low molecular weight Ca²⁺-dependent phospholipase A₂s containing 16 cysteines. *J Biol Chem* **269**: 23018–23024
- Creelman RA, Mullet JE (1997) Biosynthesis and action of jasmonates in plants. *Annu Rev Plant Physiol Plant Mol Biol* **48**: 355–381
- Davidson FF, Dennis EA (1990) Evolutionary relationships and implications for the regulation of phospholipase A₂ from snake venom to human secreted forms. *J Mol Evol* **31**: 228–238
- Dennis EA (1994) Diversity of group types, regulation, and function of phospholipase A₂. *J Biol Chem* **269**: 13057–13060
- Forst S, Weiss J, Elsbach P (1986) Structural and functional properties of a phospholipase A₂ purified from an inflammatory exudate. *Biochemistry* **25**: 8381–8385
- Hirayama T, Ohto C, Mizoguchi T, Shinozaki K (1995) A gene encoding a phosphatidylinositol-specific phospholipase C is induced by dehydration and salt stress in *Arabidopsis thaliana*. *Proc Natl Acad Sci USA* **92**: 3903–3907
- Huang AHC (1987) Lipases. In PK Stumpf, ed, *The Biochemistry of Plants*, Vol 9. Academic Press, New York, pp 91–119
- Kanda P, Wells MA (1981) Facile acylation of glycerophosphocholine catalyzed by trifluoroacetic anhydride. *J Lipid Res* **22**: 877–879
- Kawakita K, Senda K, Doke N (1993) Factors, affecting in vitro activation of potato phospholipase A₂. *Plant Sci* **92**: 183–190
- Kim DK, Lee HJ, Lee Y (1994) Detection of two phospholipase A₂ (PLA₂) activities in leaves of higher plant *Vicia faba* and comparison with mammalian PLA₂'s. *FEBS Lett* **343**: 213–218
- Klucis E, Polya GM (1987) Calcium-independent activation of two plant leaf calcium-regulated protein kinases by unsaturated fatty acids. *Biochem Biophys Res Commun* **147**: 1041–1047
- Kramer RM, Hession C, Johansen B, Hayes G, MacGray P, Chow EP, Tizard R, Pepinsky RB (1989) Structure and properties of a human non-pancreatic phospholipase A₂. *J Biol Chem* **264**: 5768–5775
- Martiny-Baron G, Scherer GFE (1989) Phospholipid-stimulated protein kinase in plants. *J Biol Chem* **264**: 18052–18059
- Moreau RA, Morgan CP (1988) Proteolytic activation of a lipolytic enzyme activity in potato leaves. *Plant Sci* **55**: 205–211
- Neuhoff V, Arold N, Taube D, Ehrhart W (1988) Improved staining of proteins in polyacrylamide gels including isoelectric focusing gels with clear background at nanogram sensitivity using Coomassie Brilliant Blue G-250 and R-250. *Electrophoresis* **9**: 255–262
- Palmgren MG, Sommarin M, Ulvskog P, Jørgensen PL (1988) Modulation of plasma membrane H⁺-ATPase from oat roots by lysophosphatidylcholine, free fatty acids and phospholipase A₂. *Physiol Plant* **74**: 11–19
- Pappan K, Qin W, Dyer JH, Zheng L, Wang X (1997a) Molecular cloning and functional analysis of polyphosphoinositide-dependent phospholipase D, PLDBeta, from *Arabidopsis*. *J Biol Chem* **272**: 7055–7061
- Pappan K, Zheng S, Wang X (1997b) Identification and characterization of a novel plant phospholipase D that requires polyphosphoinositides and submicromolar calcium for activity in *Arabidopsis*. *J Biol Chem* **272**: 7048–7054
- Roy S, Pouénat ML, Caumont C, Cariven C, Prévost MC, Esquerré-Tugayé MT (1995) Phospholipase activity and phospholipid patterns in tobacco cells treated with fungal elicitor. *Plant Sci* **107**: 17–25
- Sahsah Y, Thi ATP, Roy-Macauley H, d'Arcy-Lameta A, Repellino A, Zuily-Fodil Y (1994) Purification and characterization of a soluble lipolytic acylhydrolase from cowpea (*Vigna unguiculata* L.) leaves. *Biochim Biophys Acta* **1215**: 66–73
- Scott DL, White SP, Otwinowski Z, Yuan W, Gelb MH, Sigler PB (1990) Interfacial catalysis: the mechanism of phospholipase A₂. *Science* **250**: 1541–1546
- Seilhamer JJ, Pruzanski W, Vadas P, Plant S, Miller JA, Kloss J, Johnson LK (1989) Cloning and recombinant expression of phospholipase A₂ present in rheumatoid arthritic synovial fluid. *J Biol Chem* **264**: 5335–5338
- Stähl U, Banas A, Stymne S (1995) Plant microsomal phospholipid acyl hydrolases have selectivities for uncommon fatty acids. *Plant Physiol* **107**: 953–962
- Stähl U, Ek B, Banas A, Lenman M, Sjö Dahl S, Stymne S (1997) Purification and characterization of a microsomal phospholipase A₂ from developing elm seeds. In JP Williams, MU Khan, NW Lem, eds, *Physiology, Biochemistry and Molecular Biology of Plant Lipids*. Kluwer Academic Publishers, Dordrecht, The Netherlands, pp 244–246
- Teissère M, Borel M, Cailloil B, Nari J, Gardies AM, Noat G (1995) Purification and characterization of a fatty acyl-ester hydrolase from post-germinated sunflower seeds. *Biochim Biophys Acta* **1255**: 105–112
- Tischfield JA (1997) A reassessment of the low molecular weight phospholipase A₂ gene family in mammals. *J Biol Chem* **272**: 17247–17250
- Tojo H, Teramoto T, Yamano T, Okamoto M (1984) Purification of intracellular phospholipase A₂ from rat spleen supernatant by reverse-phase high-performance liquid chromatography. *Anal Biochem* **137**: 533–537
- Vadas P, Wasi S, Movat HZ, Hay JB (1981) Extracellular phospholipase A₂ mediates inflammatory hyperaemia. *Nature* **293**: 583–585
- Waite M (1987) The phospholipases. In DJ Hanahan, ed, *Handbook of Lipid Research*, Vol 5. Plenum Press, New York, pp 111–133
- Wessel D, Flügge UI (1984) A method for the quantitative recovery of protein in dilute solution in the presence of detergents and lipids. *Anal Biochem* **138**: 141–143
- Yotsushima K, Mitsui T, Takaoka T, Hayakawa T, Igaue I (1993) Purification and characterization of membrane-bound inositol-specific phospholipase C from suspension-cultured rice (*Oryza sativa* L.) cells. *Plant Physiol* **102**: 165–172