

RESEARCH

Open Access

# Imported submicroscopic malaria in Madrid

Germán Ramírez-Olivencia<sup>1\*</sup>, José Miguel Rubio<sup>2</sup>, Pablo Rivas<sup>1</sup>, Mercedes Subirats<sup>3</sup>, María Dolores Herrero<sup>1</sup>, Mar Lago<sup>1</sup> and Sabino Puente<sup>1</sup>

## Abstract

**Background:** Submicroscopic malaria (SMM) can be defined as low-density infections of *Plasmodium* that are unlikely to be detected by conventional microscopy. Such submicroscopic infections only occasionally cause acute disease, but they are capable of infecting mosquitoes and contributing to transmission. This entity is frequent in endemic countries; however, little is known about imported SMM.

The goals of this study were two-fold: a) to know the frequency of imported SMM, and b) to describe epidemiological, laboratorial and clinical features of imported SMM.

**Methods:** A retrospective study based on review of medical records was performed. The study population consisted of patients older than 15 years attended at the Tropical Medicine Unit of Hospital Carlos III, between January 1, 2002 and December 31, 2007. Routinely detection techniques for *Plasmodium* included Field staining and microscopic examination through thick and thin blood smear. A semi-nested multiplex malaria PCR was used to diagnose or to confirm cases with low parasitaemia.

**Results:** SMM was diagnosed in 104 cases, representing 35.5% of all malaria cases. Mean age (IC95%) was 40.38 years (37.41-43.34), and sex distribution was similar. Most cases were in immigrants, but some cases were found in travellers. Equatorial Guinea was the main country where infection was acquired (81.7%). Symptoms were present only in 28.8% of all SMM cases, mainly asthenia (73.3% of symptomatic patients), fever (60%) and arthromyalgias (53.3%). The associated laboratory abnormalities were anaemia (27.9%), leukopaenia (15.4%) and thrombopaenia (15.4%). Co-morbidity was described in 75 cases (72.1%).

**Conclusions:** Results from this study suggest that imported SMM should be considered in some patients attended at Tropical Medicine Units. Although it is usually asymptomatic, it may be responsible of fever, or laboratory abnormalities in patients coming from endemic areas. The possibility of transmission in SMM has been previously described in endemic zones, and presence of vector in Europe has also been reported. Implementation of molecular tests in all asymptomatic individuals coming from endemic area is not economically feasible. So re-emergence of malaria (*Plasmodium vivax*) in Europe may be speculated.

**Keywords:** Submicroscopic malaria, Paludism, Asymptomatic malaria, Traveller, Immigrants, PCR

## Background

Malaria is usually diagnosed using microscopic methods (thick or thin blood smears) or immunochromatography. These procedures are routinely used in clinical practice, but have limited sensitivity. Submicroscopic malaria (SMM) is defined as low-density infections of *Plasmodium* that are unlikely detected by conventional microscopy.

Several questions arise from this definition: Is SMM a real entity or “only” a laboratory finding? Is SMM a rare

condition or a frequently neglected problem? And finally, can SMM play a role in malaria transmission or is it a problem only for individual patients? Since the development of polymerase chain reaction (PCR) techniques, attempts have been made to answer these questions. SMM has been associated to anaemia and low weight at birth in several studies with pregnant women [1-3], although these results are still controversial [4,5]. Even though SMM has been associated to cerebral malaria [6], SMM is only occasionally associated with any clinical manifestation.

\* Correspondence: germanro.76@gmail.com

<sup>1</sup>Unit of Tropical Medicine, Infectious Disease Department, Hospital Carlos III, 1028029, Madrid, Spain

Full list of author information is available at the end of the article

SMM is common in endemic countries and its prevalence is comprised between 13% and 33% in some areas [7-10]. The higher is the prevalence of macroscopic malaria, the higher is the detected prevalence of SMM [11]. In addition, SMM can be transmitted by infectious mosquito bites, as it has been demonstrated in endemic countries [12].

However, little is known about imported SMM, namely its relevance in terms of frequency, clinical manifestations, or laboratory abnormalities. In countries free of malaria like Spain or Greece, recent autochthonous cases [13-15], suggest the possibility of a malaria re-emergence from undetected imported cases.

This study has two objectives: a) assessing the frequency of imported SMM, and b) describing the epidemiological, laboratory and clinical features of imported SMM.

## Methods

### Study area and design

In Spain, malaria is a reportable disease. Last autochthonous case was notified in 1961 [16] and since then, all reported cases are imported from endemic countries. Hospital Carlos III is a referral unit for tropical diseases at Madrid, Spain. Most patients come by themselves to the emergency unit or are referred from primary care or general hospitals in Madrid. A very small proportion comes from other regions.

A retrospective study based on a review of medical records was performed. The study included those patients older than 15 years and diagnosed with malaria in Hospital Carlos III between January 1st, 2002 and December 31st, 2007. The study was approved by the corresponding Ethics Committee.

Exclusion criteria were: a) Unspecified diagnosis methods; b) Medical records with lack of data (>25% items): epidemiological data (> 5 items), clinical data (> 5 items), or analytical data (> 7 items).

### Malaria, submicroscopic malaria (SMM), and other definitions

A patient was diagnosed with malaria when *Plasmodium* spp. infection could be detected by conventional microscopy and/or using PCR, regardless of the presence of symptoms. A patient was defined as suffering from SMM if he/she produced a positive PCR test even if the examination of thick and thin blood smears by light microscopy was negative. Cases detected by conventional microscopy were considered as microscopic malaria. WHO criteria were followed to identify the severe malaria cases [17].

Cases of malaria were allocated into four groups following the classification criteria published by our study group [18,19]: natives, native-travellers, residents, and

travellers. Natives are persons born and living in zones endemic for malaria, that come to a non-endemic zone. Native-travellers are born in endemic zones for malaria, live in non endemic zones (for more than 2 years) and have travelled to endemic zones (country of birth or another). Residents in an endemic zone are people born in non-endemic zones, which have been living in zones endemic for malaria for at least two years. These three groups are considered as semi-immunes. Travellers are defined as people born and living in non-endemic zones that have travelled to zones endemic for malaria (no longer than two years). This last group is considered as non-immune. This classification is more accurate for the purposes of our study than the classical sorting into natives, immigrants, expatriates, and visiting friends and relatives.

### Data collection and laboratory examination

Every patient underwent a complete clinical history and an exhaustive physical examination. They were routinely screened for human immunodeficiency virus (HIV), hepatitis (A, B, C), syphilis, intestinal helminthiasis, or protozoan infestation. The screening for filariasis (symptomatic or symptom-free) was performed for natives, native-travellers, or residents in endemic zones having travelled to zones endemic for filariae.

For every patient coming from zones endemic for malaria, routine detection techniques for *Plasmodium* included Field's staining and microscopic examination through thick and thin blood smears. For all patients we always collected one blood sample, independently of the presence of fever. If the sample was negative, a second blood sample was collected only in febrile patients. A semi-nested multiplex malaria PCR [20] served to diagnose or to confirm cases with low parasitaemia. DNA was extracted following the Chelex method with minor modifications. Detection and identification of malarial species were simultaneously performed with a sequence of two SnM-PCRs. The first reaction was expected to yield two products: a band of 231 base pairs (bp) from UNR-HUF produced by the amplification of the small subunit of the human ribosomal gene (positive control), whereas the second reaction yielded a band of 783 to 821 bp from UNR-PLF that should detect the presence of any malaria species of *Plasmodium* spp. In this second reaction, infections with different human *Plasmodium* species yielded products of different sizes. A band of 269 bp indicates an infection by *Plasmodium malariae*; a band of 395 bp evidences a *P. falciparum* infection; a band of 436 bp suggests a *Plasmodium ovale* infection; and a band of 499 bp indicates a *Plasmodium vivax* infection. The mixed infections would show the corresponding bands.

**Table 1 Data collected**

Data collected	
Demographic data	Age; sex; place of birth; place of residence; last endemic zone visited; dates of travel (relevant for native-traveler and traveler); date of arrival to non endemic zone for malaria (native and native-traveler); date of arrival to endemic zone for malaria (resident in endemic zone); intake of antimalarial chemoprophylaxis (yes/no and drug); adherence to antimalarial chemoprophylaxis (correct vs incorrect).
Clinical data	Presence of symptoms (yes/no); date of onset of symptoms; liver enlargement, spleen enlargement, asthenia, headache, ocular pain, arthromyalgias, vomiting, diarrhea, rash, cough, abdominal pain, jaundice, fever, seizures, hemorrhage, shock.
Laboratory data	Hemoglobin (g/dl); white blood cells (cell/mm <sup>3</sup> ); lymphocytes (cell/mm <sup>3</sup> ); monocytes (cell/mm <sup>3</sup> ); platelets (cell/mm <sup>3</sup> ); glycaemia (mg/dl); urea (mg/dl); creatinine (mg/dl); lactic deshydrogenase enzyme -LDH- (U/ml); alanin aminotransferase enzyme -ALT- (U/ml); total cholesterol (mg/dl).

When a case of malaria lacks of >25% information, it is excluded.

Patients with confirmed malaria (microscopic or sub-microscopic) were treated according to the WHO guidelines at the time of the diagnosis. For each case, demographic, clinical, and laboratory data were documented (see Table 1). Anaemia was defined as hemoglobin

levels < 13 g/dl (12 g/dl in females); leukocytopenia as total count of white blood cells < 4000 /mm<sup>3</sup>; thrombocytopenia as total platelets < 150000/mm<sup>3</sup>; hypoglycemia as glycaemia < 80 mg/dl; and renal failure as creatinine serum levels > 1.2 mg/dl.

### Statistical analysis

Data were analysed using SPSS package for Windows 17.0 (SPSS, Chicago, IL). For univariate analysis of categorical variables, Pearson's Chi-square test was used (Fisher test when needed). For continuous data, t-Student test was chosen to compare means between groups, except when the variances of the samples were not homogeneous. In this case (absence of homoscedasticity), the non-parametric Mann-Whitney test was used. A p-value p < 0.05 was considered significant.

### Results

#### General features

293 cases of malaria were included in the study. 189 cases (65%) were classified as microscopic malaria and 104 cases (35%) as SMM. Table 2 shows the main features of all cases of malaria by groups. Equatorial Guinea was the main country where infection was acquired (67.91%). Symptomatic cases accounted for 67.57% of the total. Most of the related symptoms were fever (178

**Table 2 Characteristics of cases of malaria (total and by group)**

Characteristics of cases of malaria (total and by group)		Total	Traveler	Native	Native-traveler	Resident in endemic zone
		n=293; (100%)	n=67; (22.86%)	n=138; (47.09%)	n=14; (4.77%)	n=74; (25.26%)
Age. Mean (SD)		39.66 (14.40)	37.55 (10.45)	41.38 (16.52)	35.39 (9.72)	55.29 (16.68)
Males n (%)		155 (52.9)	42 (62.7)	66 (47.8)	36 (48.6)	11 (78.6)
Median time (days) to diagnosis (range)		11 (0-1544)	8 (0-730)	15 (0-1544)	12 (0-317)	8.5 (0-37)
Antimalarial chemoprophylaxis n (%)		36 (12.3)	21 (31.3)	n.a	15 (20.3)	n.a
Symptomatic n (%)		198 (67.6)	62 (92.5)	56 (40.6)	11 (78.6)	69 (93.2)
Abnormal laboratorial tests	Anaemia	96 (32.8)	11 (16.4)	53 (38.4)	28 (37.8)	4 (28.6)
	Leukocytopenia	50 (17.1)	12 (17.9)	21 (15.2)	12 (18.9)	3 (21.4)
	Thrombocytopenia	126 (43)	32 (47.8)	35 (25.4)	50 (67.6)	9 (64.3)
	Renal failure	31 (10.6)	12 (17.9)	11 (8)	7 (9.5)	1 (7.1)
	Jaundice	9 (3.1)	4 (6)	3 (2.2)	2 (2.7)	0 (0)
Comorbidity n (%)		177 (60.4%)	23 (34.3)	109 (79)	36 (48.6)	9 (64.3)
SMM n (%)		104 (35.5)	13 (19.4)	83 (60.1)	6 (8.1)	2 (14.3)
Plasmodium species	<i>P. falciparum</i>	255 (87)	52 (77.6)	123 (89.1)	70 (94.6)	10 (71.4)
	<i>P. vivax</i>	13 (4.4)	7 (10.4)	3 (2.2)	1 (1.4)	2 (14.3)
	<i>P. ovale</i>	13 (4.4)	4 (6)	7 (5.1)	1 (1.4)	1 (7.1)
	<i>P. malariae</i>	6 (2)	3 (4.5)	2 (1.4)	0(0)	1 (7.1)
	Mixed infections	6 (2)	1 (1.5)	3 (2.2)	2 (2.8)	0 (0)
Median of parasitation index -in microscopic malaria- (range)		0.1 (0.1-50)	0.1 (0.1-50)	0.1 (0.1-15)	0.6 (0.1-30)	0.1 (0.1-2.7)

Abbreviations (in alphabetical order). n.a Not applicable. SD (standard deviation). SMM Submicroscopic malaria.

cases) and asthenia (175 cases). Associated co-morbidity (mainly other infections) was found in 177 cases (60.41%).

### Analysis by groups

Table 3 shows the epidemiological features of microscopic malaria and SMM. Mean age and sex distribution were similar. Semi-immune group (natives, residents in endemic zones and native-travellers) was more frequent in SMM than in microscopic malaria ( $p < 0.001$ ). Anti-malarial chemoprophylaxis had been taken in 15.9% of the microscopic malaria cases (30 out of 189), whereas only in 5.8% of the SMM cases (6 out of 104) ( $p = 0.012$ ).

These data may be surprising, but further analysis revealed that only 10% of the patients suffering from microscopic malaria achieved good adherence to chemoprophylaxis (3 cases out of 30), compared to the 66.7% of patients affected by SMM (4 cases out of 6) ( $p = 0.008$ ). Other parasitic infections were more frequent in the SMM group, but no differences were found concerning infections by HIV, hepatitis B virus (HBV) or hepatitis C virus (HCV). Malaria was caused

by *P. falciparum* infection in 171 cases of microscopic malaria (90.5%), and in 90 cases of SMM (86.5%) ( $p = 0.301$ ; Chi-square test). Infection was caused by other *Plasmodium* species, such as *P. ovale* (8 microscopic malaria cases; 5 SMM cases), *P. vivax* (8 microscopic malaria cases; 5 SMM cases), and *P. malariae* (2 microscopic malaria cases; 4 SMM cases).

We found some relevant differences in clinical characteristics between microscopic malaria and SMM groups (Table 4). Most microscopic malaria cases were symptomatic, while only one out of three cases reported clinical signs in the SMM group. Fever, asthenia and headache were more common in patients with microscopic malaria than in the SMM group. Although tropical splenomegaly was rarely found, it was more frequently noticed in the SMM group (13.3%) than in the MM group (1.8%) ( $p < 0.011$ ). No severe malaria was found in the SMM group.

Table 5 shows the analytical values of some blood tests. Comparison of laboratory abnormalities can be seen in Figure 1. More cases of thrombocytopenia ( $p < 0.001$ ) and renal failure ( $p = 0.047$ ) were detected in the

**Table 3 Epidemiological features of imported microscopic malaria and SMM**

Epidemiological features by group			
	Microscopic malaria	Submicroscopic malaria	p value
<b>Age. Mean (SD)</b>	39 (13.9)	40 (15.2)	0.527
<b>Male sex. N (%)</b>	104 (55%)	51 (49%)	0.326
<b>Group. N (%)</b>			
Traveller (not immune)	54 (28.6%)	13 (12.5%)	< 0.001
Semiimmune	135 (71.4%)	91 (87.5%)	
Native	55 (29.1%)	83 (79.8%)	
Resident in endemic zone	12 (6.3%)	2 (1.9%)	
Native-traveller	68 (36%)	6 (5.8%)	
<b>Prophylaxis. N (%)</b>	30 (15.9%)	6 (5.8%)	0.012
Drug			
Atovaquone-proguanil	3 (1.6%)	4 (3.8%)	
Doxycycline	3 (1.6%)	0	
Mefloquine	15 (7.9%)	0	
Others	9(4.8%)	2 (2%)	
<b>Comorbidity. N (%)</b>	102 (54%)	75 (72.1%)	0.002
Parasitological infection	25 (24.5%)	55 (73.3%)	< 0.001
Filariae	11 (10.8%)	36 (48%)	< 0.001
Intestinal helminths	11 (10.8%)	26 (34.7%)	< 0.001
Others	16 (15.2%)	30 (40%)	< 0.001
HIV	16 (15.8%)	11 (14.7%)	0.831
HBV	15 (7.9%)	7 (6.7%)	0.708
HCV	14 (7.4%)	9 (8.6%)	0.294
<b>Number of different countries of acquisition</b>	31 (Equatorial Guinea 69.3% (114); Nigeria 5.3% (10); Cameroon 3.7% (7); Mali 3.2% (6))*	15 (Equatorial Guinea 81.7% (85); Cameroon 2.9% (3))*	n.a.

SD: Standard deviation. \* Countries representing <2.5% are omitted.

**Table 4 Clinical features of imported microscopic malaria and SMM**

Clinical features by group			
	Microscopic malaria	Submicroscopic malaria	p value
Time to diagnosis (days)	11 (0-730)	12 (0-1544)	0.276 (M)
Symptomatic	168 (88.9%)	30 (28.8%)	< 0.001
Liver enlargement	17 (9%)	11 (10.6%)	0.0659
Spleen enlargement	29 (15.3%)	14 (13.5%)	0.663
Asthenia	153 (91.1%)	22 (73.3%)	0.011 (F)
Headache	119 (70.8%)	12 (40%)	0.001
Ocular pain	39 (23.2%)	3 (10%)	0.103
Arthromyalgia	116 (69%)	16 (53.3%)	0.093
Vomiting	36 (21.4%)	2 (6.7%)	0.059
Diarrhoea	37 (22%)	2 (6.7%)	0.051
Rash	1 (0.6%)	1 (3.3%)	0.281 (F)
Cough	4 (2.4%)	2 (6.7%)	0.226 (F)
Abdominal pain	5 (3%)	2 (6.7%)	0.287
Fever	160 (95.2%)	18 (60%)	< 0.001 (F)
Tropical splenomegaly	3 (1.8%)	4 (13.3%)	0.011 (F)
Severe malaria	13 (6.9%)	0 (0%)	0.005 (F)

Abbreviations (in alphabetical order). F: Test de Fisher. M: Test de Mann-Whitney.

patients suffering from microscopic malaria than in SMM patients. Anaemia, leukocytopaenia, and jaundice cases were similar in both groups.

#### Symptoms, laboratory abnormalities and co-morbidity

Table 6 shows symptoms and laboratory abnormalities to ascertain whether they are related to malaria or to other co-morbidities.

#### SMM in travellers

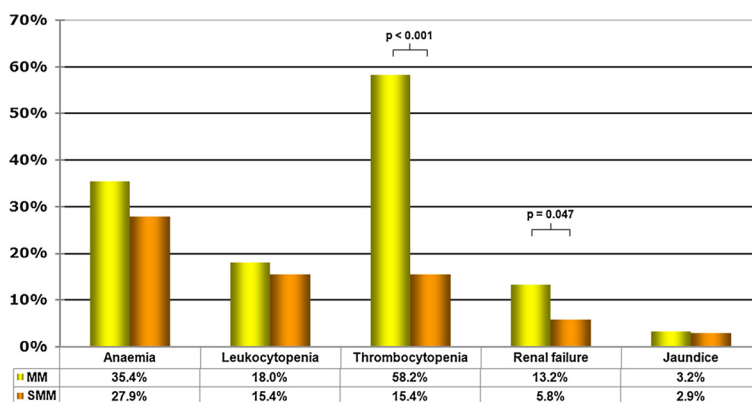
A total of 13 SMM cases were described in travellers (non immune). A total of 4 patients were symptom-free and did not show laboratory abnormalities. A good

adherence to anti-malarial chemoprophylaxis was described in only one of these SMM cases. In the remaining nine symptomatic SMM patients, one suffered from anaemia and one from thrombocytopaenia. For those nine patients, good adherence to anti-malarial chemoprophylaxis was achieved in three cases. When good adherence was achieved the reported symptoms were asthenia (3 cases), arthromyalgia (3), fever (2), headache (1), and cough (1). The symptoms reported when no adherence to anti-malarial chemoprophylaxis was achieved were asthenia (5 cases), fever (4), headache (3), arthromyalgia (3), rash (1), ocular pain (1), diarrhoea (1) and liver enlargement (1).

**Table 5 Analytical values of imported microscopic malaria and SMM**

Laboratorial features by groups			
	Microscopic malaria Mean (SD)	Submicroscopic malaria Mean (SD)	p value
Haemoglobin (g/dl).	13.1 (1.94)	13.2 (2.04)	0.85
White blood cell (cell/mm <sup>3</sup> ).	5,625 (2,008)	6,091 (2,218)	0.06
Lymphocytes (cell/mm <sup>3</sup> )	1,391 (740)	2,176 (824)	< 0.001
Monocytes (cell/mm <sup>3</sup> )	460 (271)	416 (197)	0.131
Platelets (cell/mm <sup>3</sup> )	142,045 (84,860)	216,752 (76,139)	< 0.001
Glycaemia (mg/dl)	105 (35)	100 (22)	0.222
Urea (mg/dl)	30 (15)	31 (13)	0.497
Creatinine (mg/dl)	0.97 (0.38)	0.94 (0.34)	0.539
LDH (UI/ml)	482 (236)	419 (189)	0.024
ALT (UI/ml)	59 (143)	43 (136)	0.392
Cholesterol (mg/dl)	132 (39)	164 (44)	< 0.001

Abbreviations (in alphabetical order). ALT: alanine aminotransferase enzyme. LDH: lactic dehydrogenase enzyme. SD: Standard deviation.



**Figure 1 Comparison of laboratory abnormalities.** MM: Microscopic malaria. SMM: Submicroscopic malaria.

### Discussion

This study aimed to describe the frequency of imported SMM and its epidemiological, clinical, and laboratory features. Most of the cases of imported malaria reported in Europe are of microscopic malaria and a few reported cases are of SMM. Two main important reasons explain this fact: a) Malaria is suspected when symptoms are

present and b) Diagnosis is usually made by microscopic examination but PCR is not routinely used. Examination for SMM has been progressively implemented in the daily care schemes of our hospital, based on several studies showing the high prevalence of SMM in some countries [7,9-11] or on the frequency of symptom-free cases [21,22]. This study could not estimate the

**Table 6 Laboratory abnormalities in SMM and comorbidity**

Abnormalities (n)	Co-morbidity	Comments
Anaemia (29)	24 (82.8%)	Intestinal parasites (6 cases), tuberculosis (1), thalassaemia-beta (1), chronic kidney disease (1)
Leukocytopenia (16)	10 (62.5%)	Tuberculosis (1 case), HIV infection (2), HBV infection (1), <i>Mansonella perstans</i> (6), and <i>Salmonella</i> and <i>Schistosoma</i> infection (1)
Thrombocytopenia (16)	15 (93.8%)	HIV infection (2 cases), <i>Salmonella</i> (1)
Renal failure (6)	6 (100%)	Not demonstrated kidney disease.
Jaundice (3)	3 (100%)	HBV infection (1 case), tuberculosis (1), <i>Salmonella</i> and <i>Schistosoma</i> infection (1)
Liver enlargement (11)	9 (81.8%)	HCV infection (2 cases), HIV infection (3), tuberculosis (1), alcohol-intake (1), drepanocytic anaemia (1), <i>Salmonella</i> and <i>Schistosoma</i> infection (1)
Spleen enlargement (14)	14 (100%)	HCV infection (2 cases), alcohol-intake (1), tuberculosis (1), <i>Salmonella</i> and <i>Schistosoma</i> infection (1), drepanocytic anaemia (1), <i>Mansonella perstans</i> (5). Not associated (3)
Asthenia (22)	12 (54.5%)	12 different infectious diseases
Headache (12)	6 (50%)	Intestinal parasites (3 cases) acute B hepatitis (1), tuberculosis (1), <i>Salmonella</i> and <i>Schistosoma</i> infection (1)
Ocular pain (3)	2 (66.7%)	Intestinal parasites (2 cases)
Arthromyalgia (16)	8 (50%)	Acute B hepatitis (1 case), tuberculosis (1), rickettsia infection (1), pneumonia not filiated (1), HCV infection (1), <i>Mansonella perstans</i> (2), intestinal parasites (1)
Vomiting (2)	0 (0%)	
Diarrhoea (2)	1 (50%)	<i>Mansonella perstans</i>
Rash (1)	0 (0%)	
Cough (2)	1 (50%)	Not associated
Abdominal pain (2)	1 (50%)	Not associated
Fever (18)	11 (61.1%)	Infectious diseases (10), not associated (1)



prevalence of SMM in the population cared for, because PCR techniques were not systematically performed for all patients (this is not a prospective study). However, the authors believe that SMM is a frequent disease accounting for up to the third of all cases of imported malaria.

Although SMM is a clinical entity usually symptom-free, it can be associated to asthenia, fever or musculo-skeletal pain. In addition, anaemia, leukocytopenia or thrombocytopenia were reported in more than 10% of the cases. Symptoms and laboratory abnormalities may be linked to other diseases when co-morbidity is present, but sometimes SMM is the only cause. SMM should be envisaged when conventional techniques for malaria detection gave negative results but some clinical or analytical abnormalities remain unexplained in patients coming from zones endemic for malaria.

Negative microscopic tests can produce a positive PCR test in these cases: a) False positive of the PCR technique, or b) Low-density parasitaemias. In low-density parasitaemia, five possibilities have to be considered: 1) Infection in semi-immune people; 2) Anti-malarial treatment; 3) Anti-malarial chemoprophylaxis; 4) First stages of infection; or 5) False negative microscopic method (microscopists with a limited experience in identifying malaria, a real possibility in areas with no transmission).

False positive (or PCR contamination) is a common problem, with rates reported by laboratories between 0.7% and 10% [11,23]. Infection of semi-immune persons is common in endemic countries, as previously mentioned, and has also been described in immigrants [18,24]. Another explanation can be the development of resistance to anti-malarial treatment, as a result of an incorrect management of the treatment or caused by low levels of medication, as well as the “controlled infection” in people taking anti-malarial chemoprophylaxis. The early stages of malaria infection can be identified as SMM (even in non-immune people), and may evolve to a “microscopic” infection if no treatment is given.

Data from the WHO Regional Office for Europe have shown that the number of imported malaria cases have not changed significantly in the last ten years (except in France) [25]. Autochthonous malaria cases have been reported in Azerbaijan, France, Georgia, Greece, Italy, Russian Federation, Spain and Ukraine in the same period of time [13,15,25,26]. The possibility of transmission in SMM has been described in endemic zone for malaria [8,12], and presence of a suitable vector in Europe (*Anopheles atroparvus*, *Anopheles claviger* or *Anopheles maculipennis*) has also been reported [27,28]. Since the implementation of molecular tests for all symptom-free individuals coming from endemic area is too expensive, the possibility of a re-emergence of malaria (*Plasmodium vivax*) in Europe can only be speculated.

## Conclusions

SMM is a frequent condition that should be considered when some clinical or analytical abnormalities remain unexplained in a patient coming from zones endemic for malaria. Undetected and untreated SMM and the spreading of competent vectors might be the causes of a re-emergence of malaria in Europe.

## Competing interests

The authors declare that they have no competing interests.

## Authors' contributions

GRO, PR, MDH, ML and SP attended the patients, collected the data and drafted the manuscript. MS carried out the microscopic examination. JMR carried out the molecular genetic studies. All authors read and approved the final manuscript.

## Acknowledgements

This study was supported by RICET RD06/0021/0003 ISCIII-RETICS.

## Author details

<sup>1</sup>Unit of Tropical Medicine, Infectious Disease Department, Hospital Carlos III, 1028029, Madrid, Spain. <sup>2</sup>Malaria & Emerging Parasitic Diseases Laboratory, Parasitology Department, National Centre of Microbiology, Instituto de Salud Carlos III (ISCIII), 28220, Madrid, Spain. <sup>3</sup>Microbiology and Parasitology Department, Hospital Carlos III, 1028029, Madrid, Spain.

Received: 1 April 2012 Accepted: 3 September 2012

Published: 12 September 2012

## References

1. Mockenhaupt FP, Rong B, Till H, Eggelte TA, Beck S, Gyasi-Sarpong C, Thompson WN, Bienzle U: **Submicroscopic *Plasmodium falciparum* infections in pregnancy in Ghana.** *Trop Med Int Health* 2000, **5**:167–173.
2. Arango E, Maestre A, Carmona-Fonseca J: **Effect of submicroscopic or polyclonal *Plasmodium falciparum* infection on mother and gestation product: systematic review**(in Portuguese. *Rev Bras Epidemiol* 2010, **13**:373–386.
3. Adegnik AA, Verweij JJ, Agnandji ST, Chai SK, Breitling LP, Ramharter M, Frolich M, Issifou S, Kreamsner PG, Yazdanbakhsh M: **Microscopic and sub-microscopic *Plasmodium falciparum* infection, but not inflammation caused by infection, is associated with low birth weight.** *AmJTrop Med Hyg* 2006, **75**:798–803.
4. Saute F, Menendez C, Mayor A, Aponte J, Gomez-Olive X, Dgedge M, Alonso P: **Malaria in pregnancy in rural Mozambique: the role of parity, submicroscopic and multiple *Plasmodium falciparum* infections.** *Trop Med Int Health* 2002, **7**:19–28.
5. Walker-Abbey A, Djokam RRT, Eno A, Leke RFG, Titanji VPK, Fogako J, Sama G, Thuita LH, Beardslee E, Snounou G, Zhou A, Taylor DW: **Malaria in pregnant Cameroonian women: the effect of age and gravidity on submicroscopic and mixed-species infections and multiple parasite genotypes.** *AmJTrop Med Hyg* 2005, **72**:229–235.
6. Giha HA, A-Elbasit IE, A-Elgadir TME, Adam I, Berzins K, Elghazali G, Elbasher MI: **Cerebral malaria is frequently associated with latent parasitemia among the semi-immune population of eastern Sudan.** *Microbes Infect* 2005, **7**:1196–1203.
7. Roper C, Elhassan IM, Hviid L, Giha H, Richardson W, Babiker H, Satti GM, Theander TG, Arnot DE: **Detection of very low level *Plasmodium falciparum* infections using the nested polymerase chain reaction and a reassessment of the epidemiology of unstable malaria in Sudan.** *AmJTrop Med Hyg* 1996, **54**:325–331.
8. Shekalaghe SA, Bousema JT, Kunei KK, Lushino P, Masokoto A, Wolters LR, Mwakalinga S, Mosha FW, Sauerwein RW, Drakeley CJ: **Submicroscopic *Plasmodium falciparum* gametocyte carriage is common in an area of low and seasonal transmission in Tanzania.** *Trop Med Int Health* 2007, **12**:547–553.
9. Shekalaghe S, Alifrangis M, Mwanziva C, Enevold A, Mwakalinga S, Mkali H, Kavishere R, Manjurano A, Sauerwein R, Drakeley C, Bousema T: **Low density parasitaemia, red blood cell polymorphisms and *Plasmodium falciparum***

- specific immune responses in a low endemic area in northern Tanzania. *BMC Infect Dis* 2009, **9**:69.
10. Touré FS, Mezui-Me-Ndong J, Ouwe-Missi-Oukem-Boyer O, Ollomo B, Mazier D, Bisser S: **Submicroscopic *Plasmodium falciparum* infections before and after sulfadoxine-pyrimethamine and artesunate association treatment in Dianga, Southeastern Gabon.** *Clin Med Res* 2006, **4**:175–179.
  11. Okell LC, Ghani AC, Lyons E, Drakeley CJ: **Submicroscopic infection in *Plasmodium falciparum*-endemic populations: a systematic review and meta-analysis.** *J Infect Dis* 2009, **200**:1509–1517.
  12. Schneider P, Bousema JT, Gouagna LC, Otieno S, van de Vegte-Bolmer M, Omar SA, Sauerwein RW: **Submicroscopic *Plasmodium falciparum* gametocyte densities frequently result in mosquito infection.** *AmJTrop Med Hyg* 2007, **76**:470–474.
  13. Santa-Olalla Peralta P, Vazquez-Torres MC, Latorre-Fandos E, Mairal-Claver P, Cortina-Solano P, Puy-Azón A, Adiego Sancho B, Leitmeyer K, Lucientes-Curdi J, Sierra-Moros MJ: **First autochthonous malaria case due to *Plasmodium vivax* since eradication, Spain, October 2010.** *Euro Surveill* 2010, **15**:19684.
  14. Florescu SA, Popescu CP, Calistru P, Ceausu E, Nica M, Toderan A, Zaharia M, Parola P: ***Plasmodium vivax* malaria in a Romanian traveller returning from Greece, August 2011.** *Euro Surveill* 2011, **16**:19954.
  15. Danis K, Baka A, Lenglet A, Van Bortel W, Terzaki I, Tseroni M, Detsis M, Papanikolaou E, Balaska A, Gewehr S, Douglas G, Sideroglou T, Economopoulou A, Vakalis N, Tsiodras S, Bonovas S, Kremastinou J: **Autochthonous *Plasmodium vivax* malaria in Greece, 2011.** *Euro Surveill* 2011, **16**:19993.
  16. Clavero Del Campo G: **The eradication of malaria in Spain**[(in Spanish). *Rev Sanid Hig Publica (Madr)* 1961, **35**:265–292.
  17. Severe falciparum malaria: **World Health Organization, Communicable Diseases Cluster.** *Trans R Soc Trop Med Hyg* 2000, **94**(Suppl 1):S1–S90.
  18. Ramírez-Olivencia G, Herrero MD, Subirats M, de Juanes JR, Peña JM, Puente S: **Imported malaria in adults. clinical, epidemiological and analytical features**[(in Spanish). *Rev Clin Esp* 2012, **212**:1–9.
  19. Ramírez-Olivencia G, Herrero MD, Subirats M, de Juanes JR, Peña JM, Puente S: **Imported malaria and HIV infection in Madrid. clinical and epidemiological features**[(in Spanish). *Rev Clin Esp* 2012, **212**:10–17.
  20. Rubio JM, Benito A, Berzosa PJ, Roche J, Puente S, Subirats M, López-Vélez R, García L, Alvar J: **Usefulness of seminested multiplex PCR in surveillance of imported malaria in Spain.** *J Clin Microbiol* 1999, **37**:3260–3264.
  21. Matisz CE, Naidu P, Shokoples SE, Grice D, Krinke V, Brown SZ, Kowalewska-Grochowska K, Houston S, Yanow SK: **Post-arrival screening for malaria in asymptomatic refugees using real-time PCR.** *AmJTrop Med Hyg* 2011, **84**:161–165.
  22. Marangi M, Di Tullio R, Mens PF, Martinelli D, Fazio V, Prato R, Angarano G, Schallig HDF, Giangaspero A, Scotto G: **Prevalence of *Plasmodium* spp. in asymptomatic African immigrants assessed by nucleic acid sequence based amplification**[(in Italian). *Infez Med* 2010, **18**:12–19.
  23. Wilson SM: **Detection of malaria parasites by PCR.** *Trans R Soc Trop Med Hyg* 1994, **88**:363.
  24. Dakić Z, Pelešić M, Djurković-Djaković O, Lavadinović L, Nikolić A, Stevanović G, Poluga J, Ofori-Belić I, Milošević B, Pavlović M: **Imported malaria in Belgrade, Serbia, between 2001 and 2009.** *Wien Klin Wochenschr* 2011, **123**(Suppl 1):15–19.
  25. CISID: <http://data.euro.who.int/cisid/?TabID=281619>.
  26. Armengaud A, Legros F, Quatresous I, Barre H, Valayer P, Fanton Y, D'Ortenzio E, Schaffner F: **A case of autochthonous *Plasmodium vivax* malaria, Corsica, August 2006.** *Euro Surveill* 2006, **11**:E0611163.
  27. Bueno Marí R, Jiménez Peydró R: **Malaria in Spain: entomological aspects and future outlook.** *Rev Esp Salud Publica* 2008, **82**:467–479.
  28. Bueno Marí R, Jiménez Peydró R: **Could malaria and dengue reappear in Spain?** *Gac Sanit* 2010, **24**:347–353.

doi:10.1186/1475-2875-11-324

**Cite this article as:** Ramírez-Olivencia *et al.*: Imported submicroscopic malaria in Madrid. *Malaria Journal* 2012 **11**:324.

**Submit your next manuscript to BioMed Central and take full advantage of:**

- Convenient online submission
- Thorough peer review
- No space constraints or color figure charges
- Immediate publication on acceptance
- Inclusion in PubMed, CAS, Scopus and Google Scholar
- Research which is freely available for redistribution

Submit your manuscript at  
[www.biomedcentral.com/submit](http://www.biomedcentral.com/submit)

