

RESEARCH

Open Access

Vectorial secretion of CTGF as a cell-type specific response to LPA and TGF- β in human tubular epithelial cells

Jonathan Zuehlke¹, Astrid Ebenau¹, Bettina Krueger² and Margarete Goppelt-Struebe^{1*}

Abstract

Background: Increased expression of the pro-fibrotic protein connective tissue growth factor (CTGF) has been detected in injured kidneys and elevated urinary levels of CTGF are discussed as prognostic marker of chronic kidney disease. There is evidence that epithelial cells lining the renal tubular system contribute to uptake and secretion of CTGF. However, the role of different types of tubular epithelial cells in these processes so far has not been addressed in primary cultures of human cells.

Results: Tubular epithelial cells of proximal and distal origin were isolated from human kidneys and cultured as polarized cells in insert wells. The pro-fibrotic stimuli lysophosphatidic acid (LPA) and transforming growth factor β (TGF- β) were used to induce CTGF secretion.

LPA activated CTGF secretion in proximal tubular cells when applied from either the apical or the basolateral side as shown by immunocytochemistry. CTGF was secreted exclusively to the apical side. Signaling pathways activated by LPA included MAP kinase and Rho kinase signaling. TGF- β applied from either side also stimulated CTGF secretion primarily to the apical side with little basolateral release.

Interestingly, TGF- β activation induced different signaling pathways depending on the side of TGF- β application. Smad signaling was almost exclusively activated from the basolateral side most prominently in cells of distal origin. Only part of these cells also synthesized CTGF indicating that Smad activation alone was not sufficient for CTGF induction. MAP kinases were involved in apical TGF- β -mediated activation of CTGF synthesis in proximal cells and a subset of epithelial cells of distal origin. This subpopulation of distal tubular cells was also able to internalize recombinant apical CTGF, in addition to proximal cells which were the main cells to take up exogenous CTGF.

Conclusions: Analysis of polarized human primary renal epithelial cells in a transwell system shows that vectorial secretion of the pro-fibrotic protein CTGF depends on the cell type, the stimulus and the signaling pathway activated. In all conditions, CTGF was secreted mainly to the apical side upon TGF- β and LPA treatment and therefore, likely contributes to increased urinary CTGF levels in vivo. Moreover, CTGF secreted basolaterally may be active as paracrine pro-fibrotic mediator.

Keywords: Connective tissue growth factor, Primary human tubular epithelial cells, Transforming growth factor β , Lysophosphatidic acid, Vectorial secretion, Cell polarization

* Correspondence: margarete.goppelt-struebe@uk-erlangen.de

¹Department of Nephrology and Hypertension, Friedrich-Alexander
Universität Erlangen-Nürnberg, Loschgestrasse 8, Erlangen 91054, Germany
Full list of author information is available at the end of the article

Background

Connective tissue growth factor (CTGF, CCN2) is a secreted matricellular protein which has been associated with fibrotic diseases, often mediating the pro-fibrotic effects of transforming growth factor β (TGF- β) [1,2]. Elevated levels of CTGF have been described in conditions of tissue injury and inflammation, in different animal models of kidney injury and also in human biopsy specimens [3-5]. In the rat model of unilateral ureter obstruction (UUO) CTGF protein was increased prominently in tubular epithelial cells [6]. An increased number of cells expressing CTGF mRNA was observed in human biopsies specimens at sites of chronic tubulointerstitial damage, the majority of which co-expressed alpha-smooth muscle actin [7]. Thus, inflammatory and fibrotic situations seem to induce CTGF synthesis in interstitial as well as in tubular cells.

Urinary CTGF is a marker of chronic kidney disease such as progressive hypertensive nephrosclerosis [8], diabetic nephropathy [9,10] or chronic renal allograft injury [11,12]. It was assumed that urinary CTGF reflected increased synthesis of CTGF by glomerular and tubulointerstitial cells. Analysis of human kidney sections showed CTGF mRNA and protein in severely damaged human tubules but not in normal epithelial cells [7,13]. However, in a recent study, proximal tubular dysfunction was identified as major determinant of urinary CTGF excretion [14]. CTGF was detected in apical endocytic vesicles of proximal tubular cells in mice treated with recombinant CTGF, suggesting that under normal conditions CTGF is reabsorbed almost completely and thus not detectable in the urine unless reabsorption is impaired. Depending on the pathophysiological setting, tubular epithelial cells may thus be a source or sink for urinary CTGF.

In vivo, epithelial cells are polarized with structurally and functionally distinct basolateral and apical domains. Polarization of epithelial cells in vitro can be achieved by culturing the cells on transwell membranes where they have access to nutrients and growth factors from two sides. MDCK cells derived from distal tubular cells readily establish dense polarized monolayers characterized by high transepithelial electrical resistance (TEER), whereas cell lines obtained from proximal parts of the nephron show lower TEER in line with the higher capacity for paracellular transport of proximal nephron segments [15,16]. Correspondingly, epithelial cells lining the different parts of the nephron vary in their cell-cell adhesion proteins, tight junction proteins and cadherins [17]. Proximal tubular cells are the only epithelial cells in the human adult organism which express N-cadherin instead of E-cadherin as major cell-cell adhesion protein, which allows differentiation of cells of proximal and distal origin by immunocytochemistry [18,19]. CTGF secretion from polarized

human tubular cells has not been addressed at all and the subtype of tubular cells responsible for CTGF secretion has not been identified. Furthermore, the direction of CTGF secretion to the apical or basolateral side is unknown, because thus far, CTGF synthesis has been analyzed only in non-polarized primary human tubular epithelial cells and epithelial cell lines [18,20-22].

While TGF- β is the most important pro-fibrotic stimulus, other mediators add to inflammatory and fibrotic reactions in the kidney as, for example, lysophosphatidic acid (LPA). LPA is released from platelets upon stimulation but is also produced from phosphatidylcholine by extracellular phospholipases upon cell damage [23]. By binding to several G-protein-coupled receptors it acts as pleiotropic mediator of multiple cellular effects [24]. In earlier studies, LPA was characterized as a growth and survival factor of proximal tubular cells [25] and related to inhibition of apoptosis and complement activation in reperfusion injury [26]. More recently activation of LPA1 receptors was reported in the UUO model of renal fibrosis, which was ameliorated upon LPA1 inhibition [27]. Along this line we have shown earlier that LPA is a potent inducer of CTGF in several cell types, among them mesangial cells and renal fibroblasts [28,29]. LPA as an activator of CTGF synthesis has not yet been investigated in primary tubular epithelial cells.

In this study, we addressed the question whether epithelial cells of proximal or distal tubular origin respond to the pro-fibrotic stimuli LPA and TGF- β by vectorial stimulation of CTGF synthesis and secretion. For this purpose, we used our recently established cell culture model of primary human tubular cells [18]. We show marked differences between both stimuli in terms of activated cells and route of application.

Results

Apical secretion of CTGF upon stimulation with LPA

Primary tubular cells were isolated from healthy parts of human kidney nephrectomies. Cells obtained from proximal or distal parts of the nephron were distinguished by the expression of specific cell-cell adhesion molecules, N-cadherin in proximal and E-cadherin in distal tubular cells as described earlier [18]. When the cells were cultured for at least 8 days on porous membranes in transwell inserts, they developed a polarized structure, visualized by the apical orientation of cilia above the nuclei identified by staining with an antibody against acetylated tubulin (Figure 1A). For comparison, non polarized cells display cilia which do not extend above the cells. In these cells, part of the tubular network also consisted of acetylated tubulin (Figure 1A). To show the integrity of the polarized monolayer, transepithelial electrical resistance (TEER) was determined using a Voltometer (EVOM). Values of 100 to 200 $\Omega \times \text{cm}^2$ were obtained

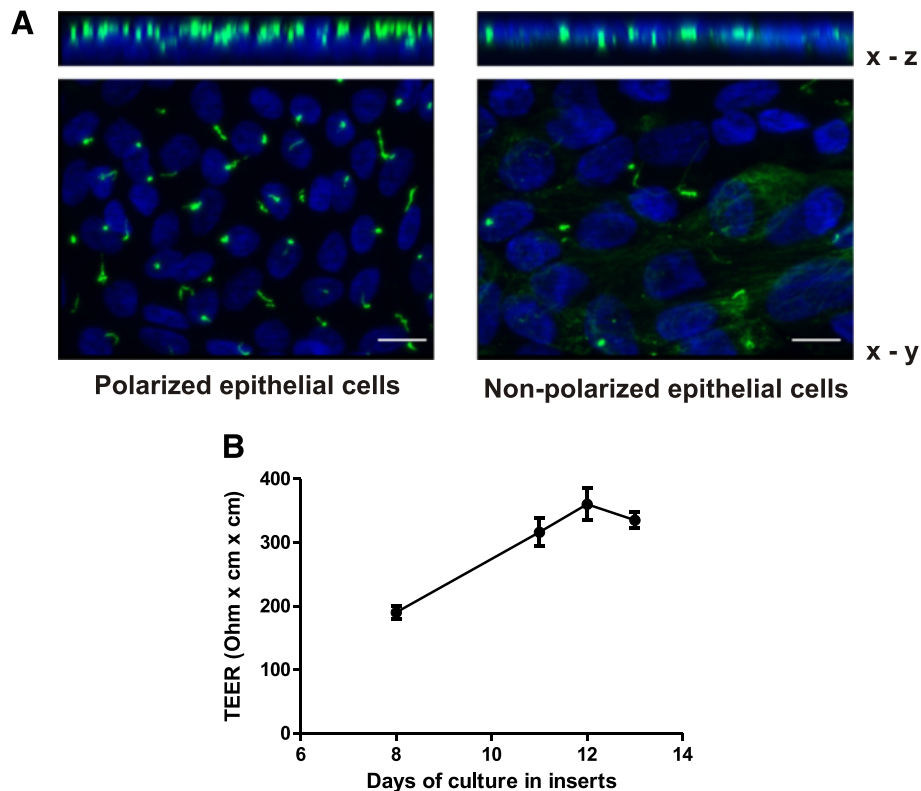


Figure 1 Polarized culture of primary human tubular epithelial cells (hPTEC). **A:** Freshly isolated hPTEC were cultured for 8 days in transwell inserts. Cilia were stained with acetylated tubulin and nuclei were visualized by Hoechst. For comparison, non polarized cells are shown in the right panel. Scale bar: 10 μ m. **B:** hPTECs were cultured for 8 to 13 days in transwell inserts. Transepithelial electrical resistance (TEER) was measured in three cultures of one preparation. Data are means \pm SD.

after 8 days and increased when the cells became denser (Figure 1B). As expected, there was variability depending on the composition of the primary cells, resistance being higher in distal cells compared to proximal cells. Figure 1B shows an example of a preparation consisting primarily of distal tubular cells.

Polarized epithelial cells were stimulated with LPA (10 μ M) from the apical or the basolateral side. Apical secretion of CTGF was rapidly induced within 2 to 4 h as shown by Western blotting (Figure 2A), whereas basolateral CTGF secretion was below the detection limit (Figure 2C). There was no significant difference between apical and basolateral application of LPA.

By immunocytochemical analysis intracellular CTGF is only visible when it is newly synthesized and transported in vesicles from the endoplasmic reticulum through the golgi [30]. Ongoing CTGF synthesis was detected by both, basolateral and apical application of LPA. CTGF expression was almost exclusively in cells of proximal origin, which lacked E-cadherin expression (Figure 2B). Higher magnification showed the perinuclear localization of CTGF (Figure 2C).

Using low molecular weight inhibitors we analyzed which signaling pathways contributed to LPA-mediated

up-regulation of CTGF expression. Inhibition of p42/44 MAP kinase/ERK1/2 activation by U0106 and to a lesser degree inhibition of the activity of p38 kinase by SB203580, reduced LPA-induced secretion of CTGF. Furthermore, Rho kinases were involved as LPA-mediated induction of CTGF was prevented by Y27632, an inhibitor of Rho-kinase signaling (Figure 2D).

Basolateral and apical stimulation by TGF- β induced apical secretion of CTGF

Secretion of CTGF induced by TGF- β was detectable after 6 and 24 h and was thus slower than upon stimulation with LPA (Figure 3). There was a marked difference in the amount of CTGF retrieved from the apical and basolateral compartments, apical secretion being much higher than basolateral secretion. TGF- β stimulated apical CTGF secretion when applied to the apical or basolateral side of the cells, although apical application was more effective (Figure 3A). Basolateral secretion was very low, irrespective of TGF- β application from the apical or basolateral side and was not detectable in all experiments (Figure 3B). As a matricellular protein CTGF binds to extracellular matrix proteins but may also attach to plastic. To prevent loss of CTGF from the supernatants, experiments were

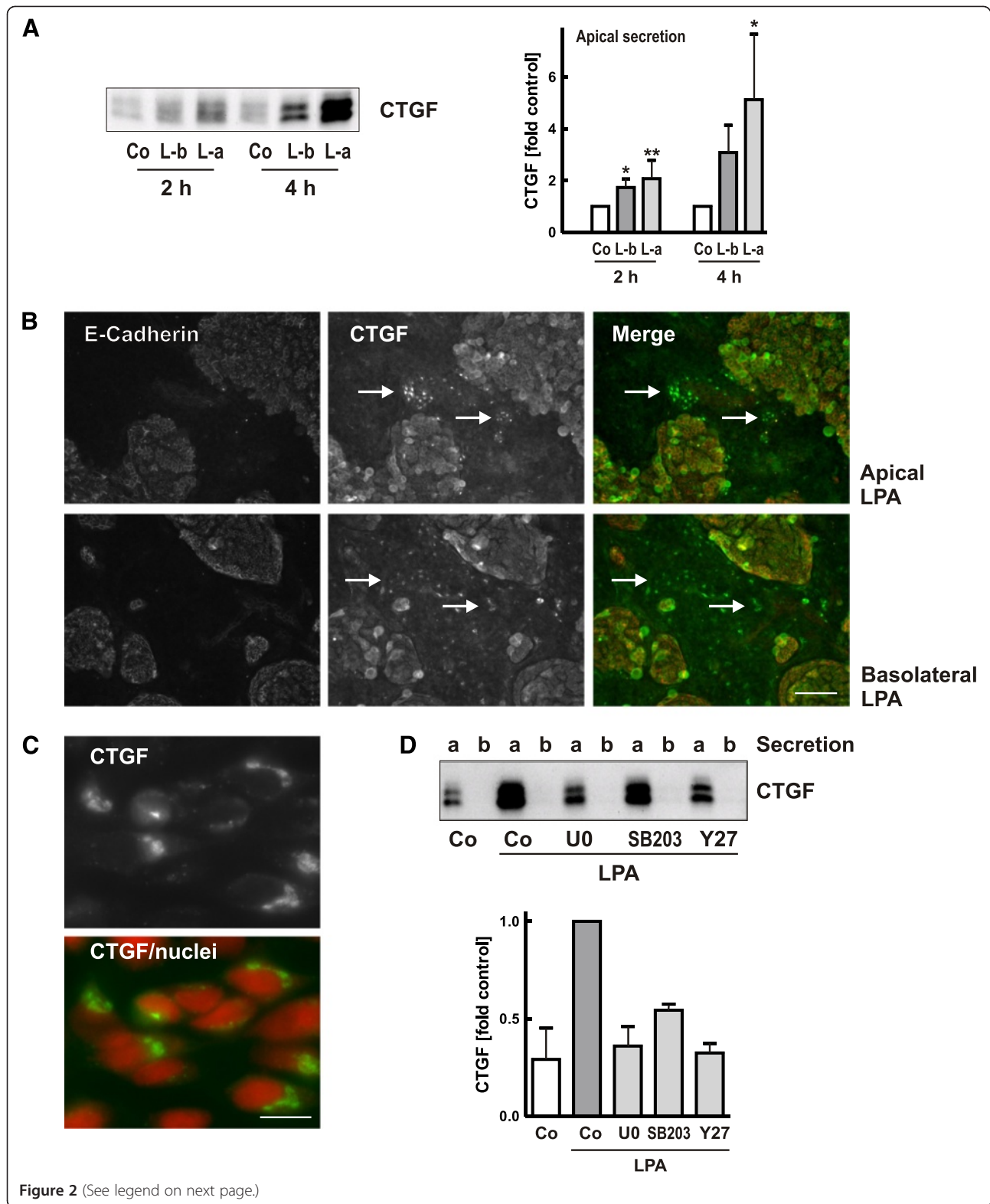


Figure 2 (See legend on next page.)

(See figure on previous page.)

Figure 2 Incubation with apical or basolateral LPA stimulated apical secretion of CTGF. **A:** Polarized hPTEC were stimulated with LPA (10 μ M) from the basolateral side (L-b) or from the apical side (L-a) for 2 and 4 h. CTGF was detected in the apical compartment. The graph summarizes data (means \pm SD) of 5 (2 h) and 3 (4 h) independent experiments. Values of secretion of control cells were set to 1 at each time point. * $p < 0.05$; ** $p < 0.01$, Dunnet's multiple comparison test. **B/C:** Polarized hPTEC were stimulated with LPA (10 μ M) from the apical or basolateral side for 1 h. CTGF and E-cadherin were visualized by immunocytochemistry. Nuclei were stained with Hoechst. Cells negative for E-cadherin represent proximal tubular cells. Newly synthesized CTGF was detectable in a perinuclear localization (C; nuclei colored in red; CTGF in green, scale bar: 10 μ m). Arrows indicate examples of CTGF positive proximal cells. Scale bar: 50 μ m. **D:** Polarized hPTEC were pre-incubated with the inhibitors (U0: U0106, 1 μ M; SB203: SB203580 1 μ M; Y27: Y27632, 10 μ M) for 30 min and then stimulated with LPA (10 μ M) from the apical and basolateral side for 4 h. Secreted CTGF was detected in the apical (a) and basolateral (b) compartment. The graph summarizes data obtained with two isolations. Apical secretion of LPA-stimulated cells was set to 1 in each experiment.

also performed in the presence of heparin, a binding protein for CTGF. The total amount of CTGF detectable in the supernatants was increased whereas the proportions of CTGF secretion were not altered (data not shown). To further characterize regulation of CTGF expression mRNA was isolated from cells cultured in inserts and analyzed by realtime quantitative PCR (Figure 3C). Stimulation with apical or basolateral TGF- β increased CTGF mRNA levels in line with transcriptional regulation of CTGF expression.

As TGF- β is a potent inducer of extracellular matrix proteins, we additionally analyzed fibronectin secretion. In contrast to CTGF secretion, released fibronectin was not detectable until 24 h after induction by TGF- β . Moreover, there was a considerable release of fibronectin to the basolateral side in all experiments (example shown in Figure 4). Quantification of fibronectin in the cell culture supernatant was variable most likely due to the fact that secreted fibronectin is not entirely soluble but forms a fibrillar network attached to the cells.

Predominant activation of distal tubular cells by TGF- β

Immunocytochemical analyses were performed to distinguish effects of TGF- β on cells of proximal and distal origin. Activation of Smads is one of the major signaling pathways of TGF- β and was detected as nuclear translocation of Smad2/3 after 1 h incubation. In Figure 5, Smad2/3 translocation was analyzed and correlated to E-cadherin double staining identifying cells of distal origin. In control cells, Smad 2/3 was located in the cytosol. Treatment with TGF- β from the apical side activated translocation of Smad 2/3 only in few cells. Part of them were E-cadherin negative and thus of proximal origin (arrows in Figure 5). Other responding cells showed weak E-cadherin staining (arrowheads, Figure 5) which marked them as distal tubular cells. By contrast, TGF- β stimulation from the basolateral side quantitatively activated Smad2/3 translocation in all E-cadherin positive cells and also some proximal cells (examples indicated by arrows in Figure 5, lower panel). Location of Smad2/3 in the nucleus of proximal cells was confirmed by co-staining of N-cadherin (data not shown).

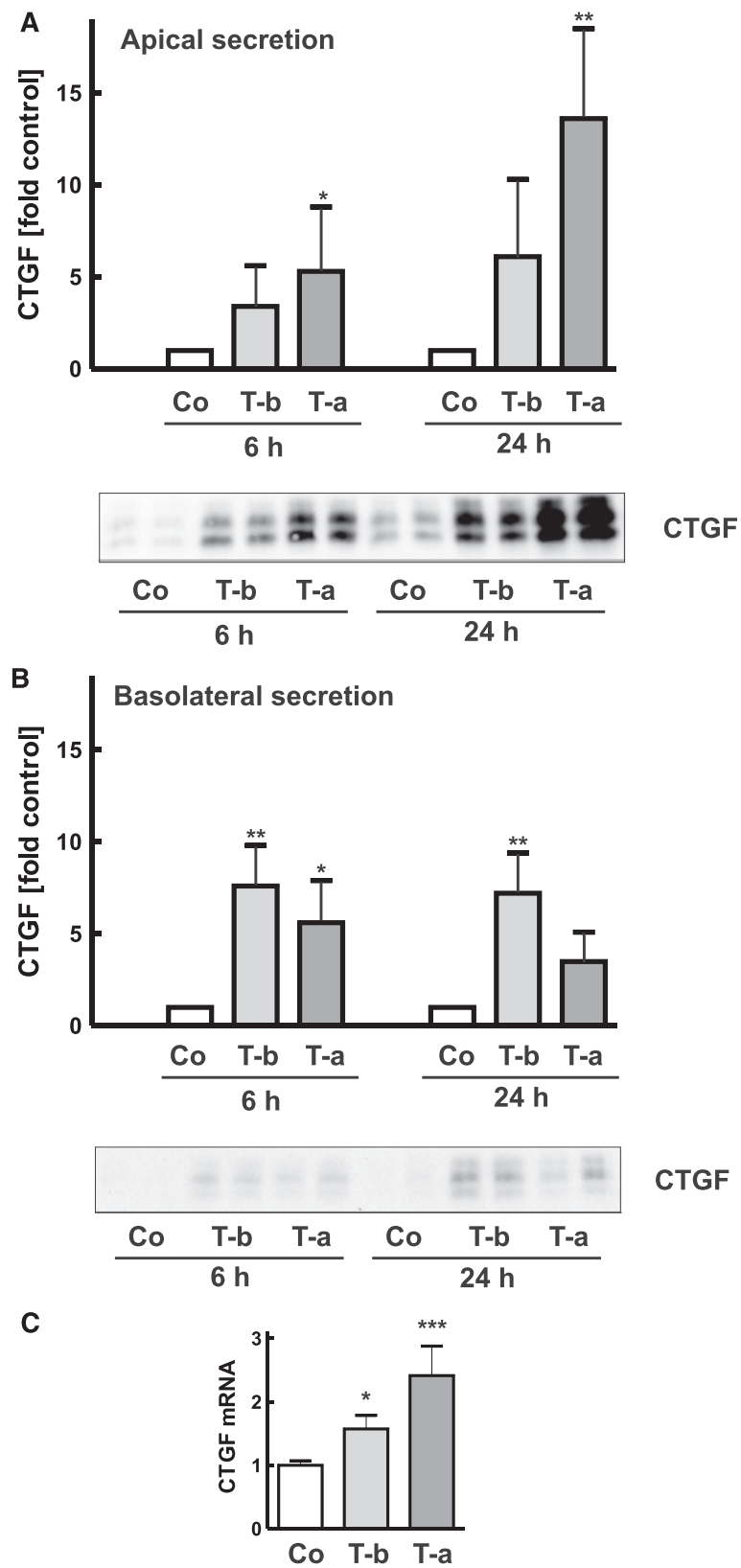
CTGF is a secreted protein and therefore difficult to detect by immunocytochemistry within cells. In control cells, CTGF synthesis was often detected in proximal epithelial cells which formed irregular densely packed structures (Arrows in Figure 6A, upper panel). Upon basolateral stimulation with TGF- β CTGF was primarily, but not exclusively, detected in distal, E-cadherin-positive, tubular epithelial cells (Figure 6A, lower panel). In contrast to the general activation of Smad2/3 in distal tubular cells, induction of CTGF expression was restricted to individual distal cells as shown by higher magnification (Arrows in Figure 6B, upper panel). Although only occasionally, we observed CTGF secretion also in proximal epithelial cells (Arrows in Figure 6B, lower panel).

Stimulation with TGF- β from the apical side for 1 and 2 h did not lead to accumulation of CTGF in intracellular vesicular structures, suggesting a rapid release mechanism. To interfere with CTGF secretion polarized cells were treated with brefeldin A which disrupts Golgi structures and thus inhibits transport of secreted proteins. In the presence of brefeldin A TGF- β applied to the apical side of the cells induced CTGF accumulation primarily in a subset of distal tubular cells expressing low levels of E-cadherin (Figure 6C, arrow heads), and also in individual proximal cells (Figure 6C, arrows).

Taken together, basolateral application of TGF- β induced CTGF synthesis primarily in distal tubular cells whereas apical application activated proximal cells and a subset of weakly E-cadherin positive distal cells.

MAP kinases are essential for apical TGF- β -mediated secretion of CTGF

The poor activation of Smad translocation by apically applied TGF- β suggested additional non-canonical signaling pathways being involved in CTGF induction. We pre-incubated hPTEC with the indicated inhibitors and then stimulated the cells with TGF- β from the apical side. Inhibition of Rho kinases did not significantly reduce CTGF induction, whereas inhibition of ERK1/2 by UO106 and p38 kinase by SB203580, almost completely prevented apical TGF- β -mediated induction of CTGF



(See figure on previous page.)

Figure 3 Secretion of CTGF from polarized hPTEC stimulated with TGF- β . Polarized hPTEC were stimulated with TGF- β for 6 and 24 h from the basolateral side (T-b) or from the apical side (T-a). CTGF was detected in the apical (A) or basolateral (B) compartment. The blots shown are from a representative experiment performed with duplicate inserts. The graphs summarize means \pm SD of 6 (A) and 3 (B) experiments with different hPTEC isolations. Expression of control cells in each experiment was set to 1. * $p < 0.05$, ** $p < 0.01$, Dunnet's multiple comparison test. **C:** RNA was isolated from polarized cells treated with TGF- β for 3 h. CTGF mRNA expression was determined by real time quantitative RT-PCR and corrected for 18 S RNA. Data are means \pm SD of duplicate determinations of duplicate inserts. RNA in control cells was set to 1. * $p < 0.05$, ** $p < 0.01$, Dunnet's multiple comparison test.

secretion (Figure 7A). Furthermore, CTGF induction was completely prevented, when the TGF- β receptor I (Alk-5) was inhibited by SB43152 indicating that the cells express TGF- β receptors also in the apical membrane. To support a role for ERK1/2 in TGF- β signaling, activation of ERK1/2 was determined in cellular homogenates of cells cultured in inserts. As shown by Western blot analysis, ERK1/2 was phosphorylated when TGF- β was applied apically (Figure 7B).

Uptake of apical CTGF by proximal tubular epithelial cells

CTGF has been reported to be taken up by mouse proximal tubules in vivo [14]. Therefore, we analyzed uptake of exogenous CTGF in polarized hPTEC. Polarized cells were incubated with recombinant human CTGF applied to the apical or basolateral side. Within 15 minutes, apical CTGF was detectable in intracellular vesicles. Uptake was confined to N-cadherin expressing proximal tubular cells (Overview in Figure 8A, details at higher magnification Figure 8B). Furthermore, uptake was detectable in a subset of weakly stained E-cadherin positive cells (Figure 8C), which did not express N-cadherin (data not shown). Cells with strong E-cadherin positive cell-cell contacts did not take up exogenous CTGF. No vesicular CTGF uptake was detectable when recombinant CTGF was applied to the basolateral compartment.

Discussion

In this study we show that CTGF is secreted from different types of polarized epithelial cells derived from the

human renal tubular system. We provide evidence that CTGF secretion is specifically regulated depending on the cell type, the stimulus and the side of application. Proximal tubular cells were the main target cells of LPA stimulation and Rho kinase signaling was activated in these cells. By contrast, TGF- β primarily stimulated different types of distal tubular epithelial cells. Basolateral TGF- β activated Smad signaling whereas MAP kinases were essential for apical activation of CTGF secretion by TGF- β .

Epithelial cells derived from human kidneys are functionally and structurally heterogeneous depending on their origin along the renal tubular system. This is also reflected in terms of epithelial barrier function and, at the cellular level, tight junctions. Renal proximal tubules are characterized as 'leaky' nephron segments with paracellular transport of NaCl, which may in part relate to the expression of claudin-2 [31,32]. Claudin-2 has also been shown to be involved in transepithelial resistance determined in different types of MDCK cells [33]. Primary cells obtained from healthy sections of human tumor nephrectomies differ in their composition as cells are obtained from various parts of the nephron. This was reflected in our measurements of transcellular resistance of the polarized cells which varied depending on the cellular composition. Preparations which consisted almost exclusively of cells of distal origin showed higher resistance than preparations which contained a higher proportion of proximal cells.

By immunocytochemistry, human cells of proximal and distal origin can be distinguished by their expression of different cell-cell adhesion proteins [18]. Morphologically, E-cadherin positive cells could be further subdivided in cobble-stone like cells which showed a strong E-cadherin immunoreactivity, and more elongated cells with less intense staining for E-cadherin. Studies are ongoing to further characterize the origin of these cells, because they markedly differed in their response to TGF- β as outlined in detail below. Proximal tubular cells uniquely express the mesenchymal cell-cell adhesion molecule N-cadherin. These cells appeared to be less polarized than distal cells, and their adherence to membranes is less tight. In the coculture system of primary cells proximal cells were surrounded by distal cells and thus exposed to mechanical stress. Proximal cells tended

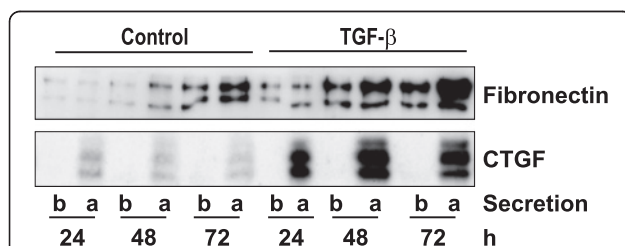


Figure 4 Secretion of fibronectin. Polarized hPTEC were stimulated with TGF- β from the basolateral and from the apical side for 24 to 72 h. Secreted CTGF and fibronectin were detected in the basolateral (b) or apical (a) compartment. The blot is representative of 3 experiments with different hPTEC isolations. In the experiment shown CTGF was below the detection limit in the basolateral compartment.

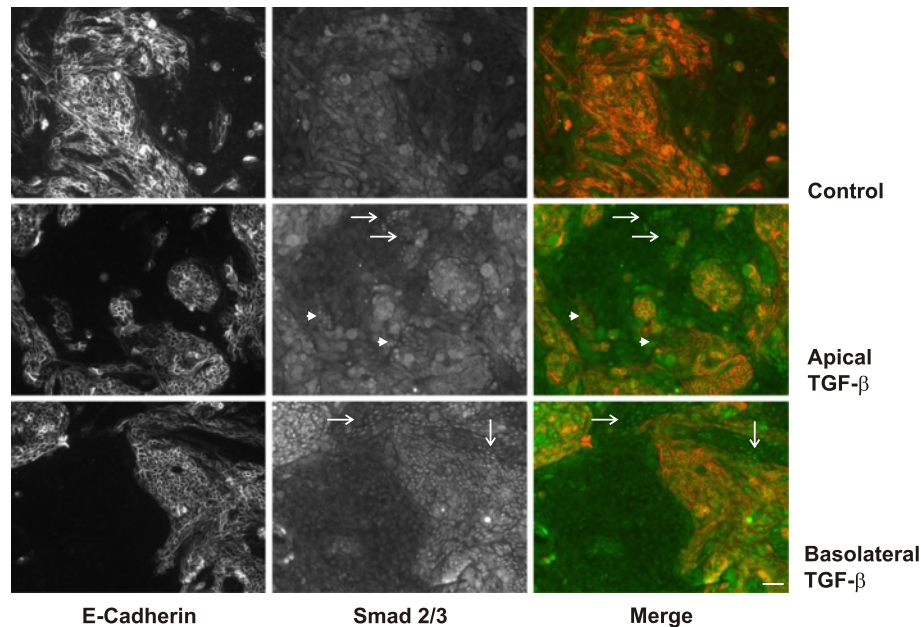


Figure 5 Preferential activation of Smad2/3 in polarized hPTEC of distal origin. Polarized hPTEC were treated with TGF- β for 1 h from the apical or basolateral side. E-cadherin (red) and Smad2/3 (green) were detected by immunocytochemistry. Cells negative for E-cadherin represent proximal cells. Upon activation with TGF- β , Smad2/3 was concentrated in the nuclei of proximal and distal cells, respectively. Arrows indicate nuclear Smad2/3 in proximal E-cadherin negative cells and arrow heads indicate nuclear Smad2/3 in distal weakly E-cadherin positive cells. Scale bar: 50 μ m.

to form multilayered structures, which often stained positive for CTGF in line with the known sensitivity of CTGF expression to mechanical stimulation [34,35].

Proximal tubular cells thus seem to be more susceptible to stimuli which modulate the actin cytoskeleton, be it by mechanical stress or by stimuli such as LPA, which activates Rho-Rho kinase signaling and modulates actin stress fibers [24]. We have shown earlier that induction of CTGF is sensitive to Rho-Rho kinase signaling in mesenchymal cells and that alterations in the actin cytoskeleton may induce CTGF expression by modulating G-actin and MAL/SRF dependent transcription in renal fibroblasts and endothelial cells, respectively [28,36,37]. By contrast, regulation of MAL/SRF-mediated gene regulation was mediated by Rac1 signaling rather than Rho-Rho kinase signaling in MDCK cells activated by calcium deprivation [38]. In polarized hPTEC, inhibition of Rho kinase signaling affected LPA-induced CTGF up-regulation but not TGF- β -mediated induction. This may be due to different signaling pathways activated by both stimuli and by the cell types activated. LPA activated almost exclusively N-cadherin positive proximal tubular cells.

Secretion of CTGF was clearly favored to the apical side of the cells. Thus far, rather little is known about the molecular mechanisms regulating CTGF secretion. Comparison of CTGF secretion with the secretion of fibronectin indicated that the apical secretion of CTGF

was a regulated vectorial process which differed from the secretion of fibronectin, the basolateral secretion of which was much more pronounced. Other secreted proteins such as e.g. metalloproteinases were detected comparably in the apical and basolateral compartment of the transwell cultures (data not shown) further endorsing the specificity of CTGF secretion.

Based on the data obtained with LPA, it was clear that proximal tubular epithelial cells secreted CTGF to the apical side. However, as long as the molecular mechanisms of CTGF secretion have not been deciphered, we cannot rule out that other stimuli may activate also basolateral secretion of CTGF from proximal tubular cells.

LPA stimulated CTGF expression applied from both sides. In line with these data CTGF receptors have been characterized in both, apical and basolateral membranes of polarized gastrointestinal Caco-2 cells [39]. By contrast, TGF- β was reported to activate Caco-2 cells and MDCK cells only when applied to the basolateral side [40-42]. However, localization of TGF- β receptors seems to vary between different epithelia. Even with certain MDCK cells (subtype MDCKII) apical activation by TGF- β has been reported [43]. Apical localization of TGF- β receptor I was also reported in porcine vas deferens epithelium [44]. In the kidney, Wang et al. had provided evidence for apical expression of TGF- β receptors in a subset of rat cortical collecting duct cells, and

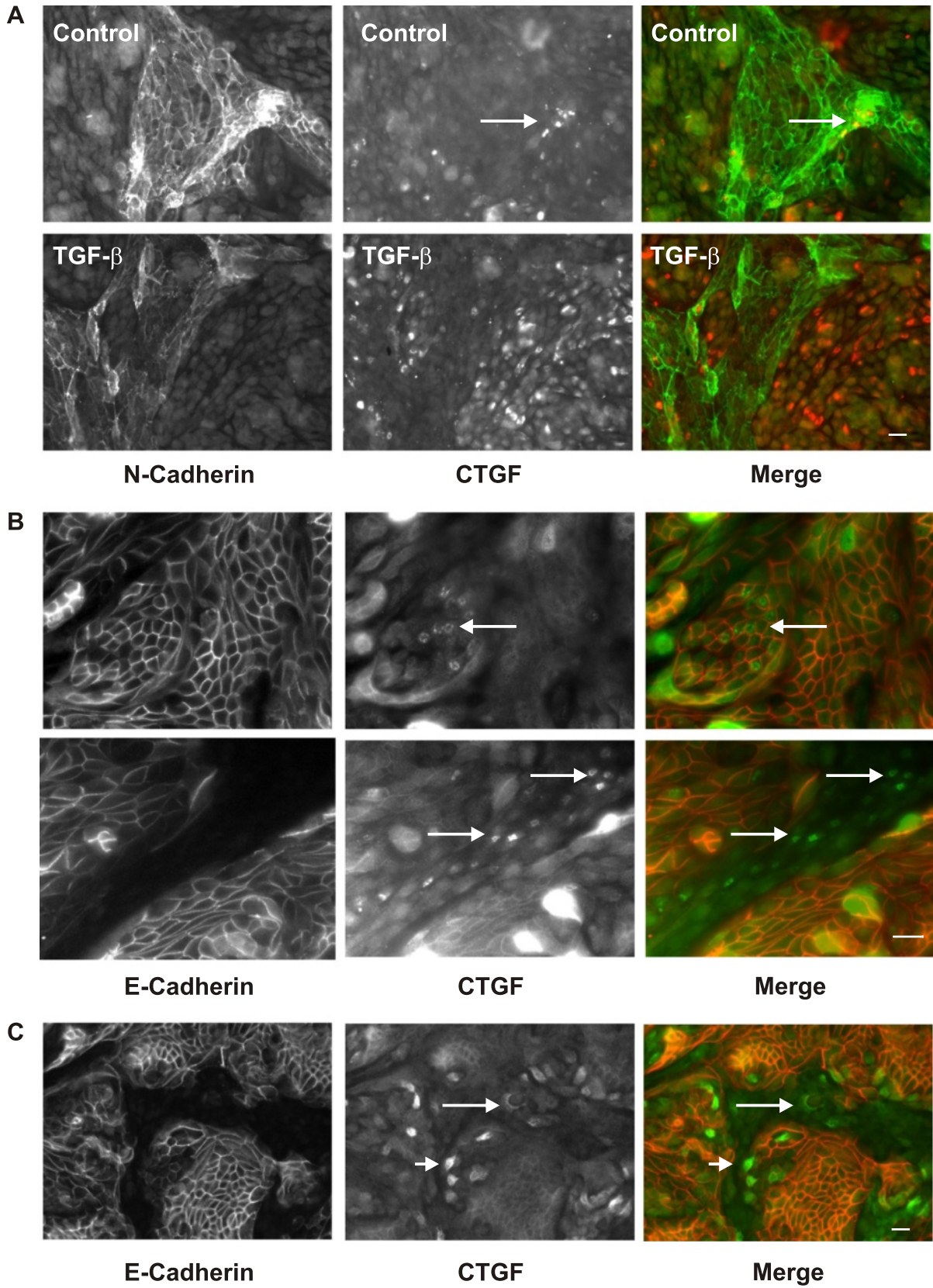


Figure 6 (See legend on next page.)

(See figure on previous page.)

Figure 6 Accumulation of intracellular CTGF upon stimulation with basolateral TGF- β . **A:** hPTEC were polarized and then stimulated with TGF- β for 1 h from the basolateral side. N-cadherin (green) and CTGF (red) were detected by immunocytochemistry. Control cells showed CTGF expression only in clustered proximal tubular cells (arrow, upper panels). Treatment with TGF- β from the basolateral side activated CTGF primarily in distal tubular cells (lower panels). Scale bar: 20 μ m. **B:** Higher magnification of an experiment performed as in A with cells stimulated with TGF- β from the basolateral side. E-cadherin (red) and CTGF (green) were detected by immunocytochemistry. Arrows indicate examples of positive cells. Scale bar: 20 μ m. **C:** Polarized hPTEC were treated with brefeldin A (10 μ M) for 30 min and then were incubated with TGF- β from the apical side for 2 h. E-cadherin (red) and CTGF (green) were detected by immunocytochemistry. Arrows indicate examples of CTGF positive proximal cells, which were negative for E-cadherin; arrow heads indicate examples of CTGF positive distal cells, which weakly express E-cadherin. Scale bar: 20 μ m.

showed *in vitro* reactivity of mouse proximal tubular cells and renal inner medullary cell lines (mIMCD-3 cells) upon apical stimulation with TGF- β [45]. In our experiments, TGF- β was clearly active when applied from the apical side in a TGF- β receptor I-dependent manner. Immunocytochemical analyses revealed that in addition to proximal tubular cells only a subset of distal cells reacted to apical TGF- β , characterized by low expression of E-cadherin. Further studies are necessary to define the origin of these cells which obviously differ from MDCK cells.

An additional level of complexity arises from the diversity of TGF- β receptor signaling, which implies Smad dependent and independent pathways (summarized in [46]). Furthermore, TGF- β signaling depends on interactions of its receptors with other membrane-bound proteins including growth factor receptors and integrins [47,48]. In our studies, apical TGF- β hardly activated the canonical Smad pathway which was detected upon basolateral application and may be essential for TGF- β secretion as detected in MDCK cells. In MDCKII cells, apical treatment with TGF- β increased transepithelial resistance, which was prevented by inhibition of p38 and ERK1/2 signaling [43]. In line with those studies, we showed phosphorylation of ERK1/2 upon apical application of TGF- β related to increased CTGF synthesis. A role for active ERK1/2 in CTGF synthesis in non-polarized epithelial cells was also described in epithelial cells of the eye [49] and in proximal tubular cell lines HKC-8 [21,22]. Activation N-Ras GTPase has been implicated in ERK-mediated CTGF induction in HKC-8 cells [22]. Furthermore, evidence was provided for direct phosphorylation of ShcA proteins by TGF- β receptor I [50]. Whether these or other signaling pathways are also involved in the apical induction of CTGF in primary human tubular cells remains to be investigated.

Basolateral stimulation of tubular epithelial cells by TGF- β rapidly activated Smad signaling in all distal tubular cells and also part of the proximal cells. By contrast, only distinct cell populations stained positive for intracellular CTGF at any given time point after TGF- β stimulation. This may in part be due to the fact that intracellular CTGF can only be detected when it

accumulates in the secretory pathway. However, more likely it reflects the fact that activation of the Smad pathway is not sufficient for CTGF synthesis and secretion. For instance, induction of CTGF by TGF- β in epithelial cells cultured in dishes was strongly dependent on cell density, whereas Smad translocation was density-independent [20]. The signaling pathways which regulate density-dependent CTGF synthesis are not yet known but may also modulate CTGF expression in polarized cells.

Cellular uptake of CTGF has been observed in different cell types, mesangial cells [51], fibroblasts [52], chondrocytes [53] or endothelial cells (Muehlich, Goppelt-Struebe, unpublished), and was also shown *in vivo* in proximal tubular cells in mice upon CTGF injection [14]. Our experiments confirmed uptake of exogenous CTGF in proximal cells. In addition, we observed CTGF uptake in the subset of E-cadherin positive cells, which also secreted CTGF upon stimulation with apical TGF- β as discussed above.

It was interesting to note that upon stimulation with TGF- β , CTGF was not exclusively secreted to the apical side but also detectable at the basolateral side. Extrapolating to the *in vivo* situation, this may imply that the secreted CTGF is not lost in the urine but may be potentially active as a paracrine mediator. This aspect is supported by *in vivo* studies showing a role for tubular CTGF in the model system of remnant kidney disease in TGF- β 1 transgenic mice [54]. Activated epithelial cells may thus contribute to the increased CTGF plasma levels detected in chronic kidney disease also in humans [1-3]. Furthermore, the strong apical secretion of CTGF suggests that also *in vivo*, activated tubular cells may have a share in urinary CTGF levels not only by uptake of filtered CTGF but also by secretion. Whether or not urinary CTGF has a functional role by acting on further distal tubular cells, remains to be established. Thus far, the biological effects of CTGF on distal tubular cells have not yet been investigated.

Conclusions

In this study we provide evidence that non transformed polarized human epithelial cells secrete the

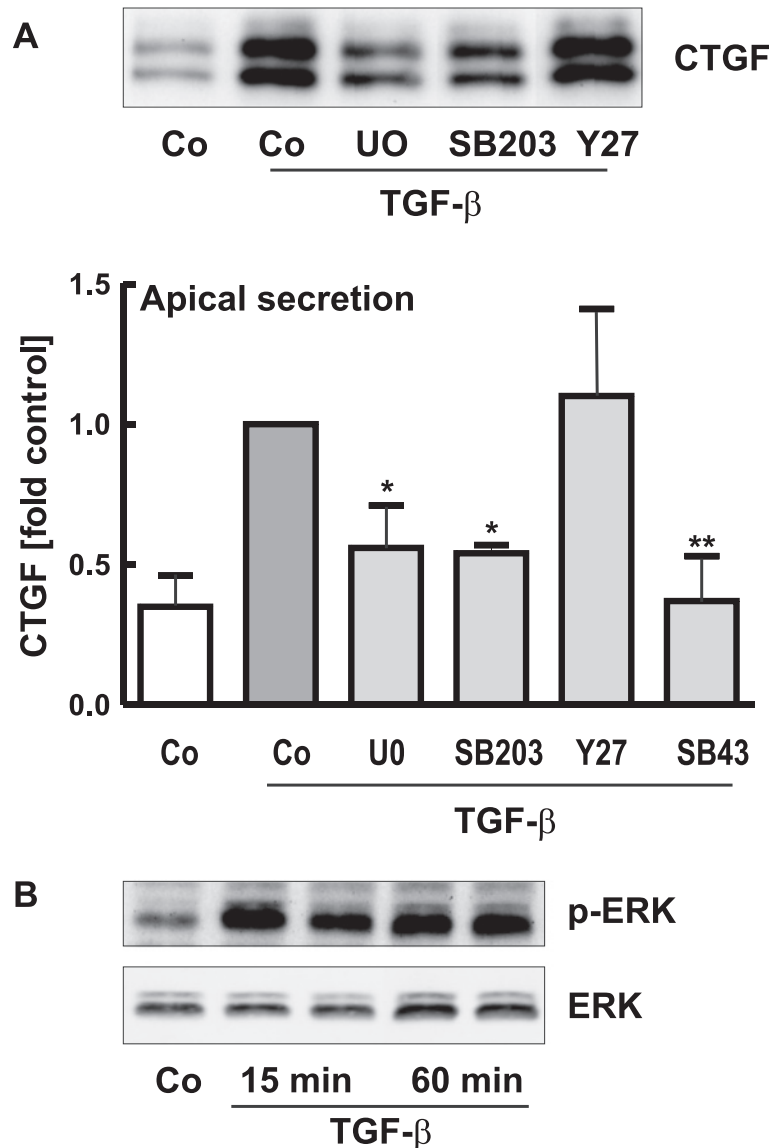


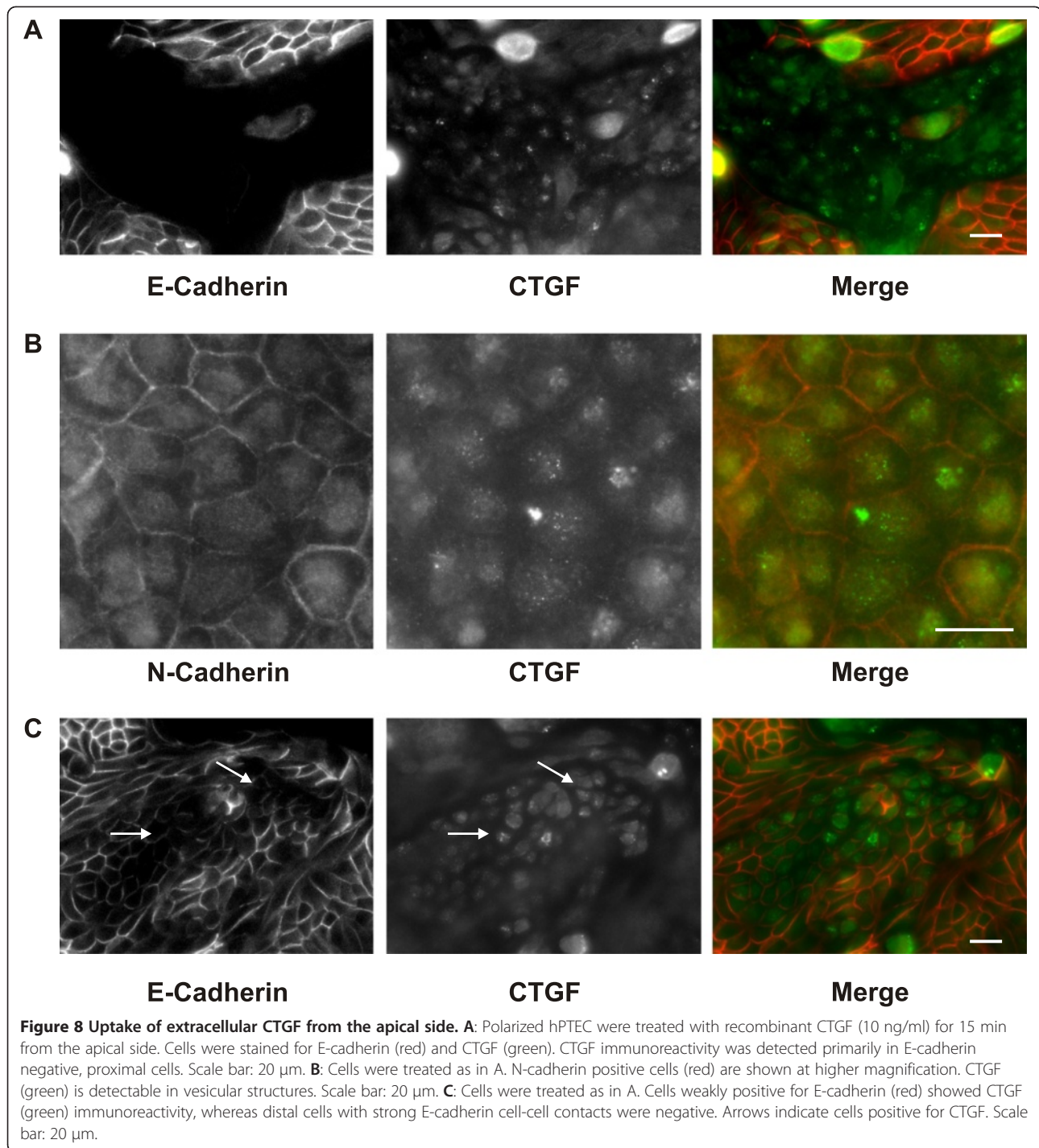
Figure 7 Role for MAP kinases in apical TGF- β -mediated secretion of CTGF. **A:** Polarized hPTEC were incubated with inhibitors (UO: U0106, 1 μ M; SB203: SB203580, 1 μ M; Y27: Y27632, 10 μ M; SB43: SB431542: 10 μ M) for 30 min and then stimulated with TGF- β from the apical side for 6 h. CTGF secretion was detected in the apical compartment. The graph summarizes means \pm SD of 3 independent experiments. Secretion of CTGF in TGF- β -stimulated cells was set to 1 in each experiment. ** $p < 0.01$, * $p < 0.05$ compared to TGF- β -stimulated cells, Dunnett's multiple comparison test. **B:** Polarized hPTECs were stimulated in duplicate with TGF- β for 15 and 60 min from the apical side. Protein was isolated from polarized cells. ERK1/2 and phospho-ERK1/2 were detected by Western blotting.

pro-fibrotic protein CTGF in a cell-type and stimulus-specific manner. Furthermore, CTGF secretion was distinguishable from other secreted proteins indicative of specific molecular mechanisms regulating vectorial secretion. Most interestingly, CTGF was not only secreted but also taken up by proximal tubular cells. Approximating the *in vivo* situation, our model system is thus suitable for further investigation of secretion and uptake of proteins that are relevant markers for renal injury.

Methods

Materials

DMEM/Ham's F12 medium was purchased from Biochrom AG (Berlin, Germany), DMEM medium and Hank's BSS from PAA Laboratories (Coelbe, Germany), insulin-transferrin-selenium supplement from Gibco (Karlsruhe, Germany), fetal calf serum (FCS) from PAN Biotech (Aidenbach, Germany), triiodothyronine from Fluka (Buchs, Switzerland), hydrocortisone from Sigma (Munich, Germany), epidermal growth factor from



PeproTech (Hamburg, Germany), TGF- β 1 from tebu-bio (Offenbach, Germany), lysophosphatidic acid (LPA) (Sigma-Aldrich, Munich, Germany); Rho kinase inhibitor Y27632, TGF- β RI Kinase Inhibitor VI, SB431542, MEK kinase inhibitor U0126, p38 kinase inhibitor and brefeldin A were obtained from Calbiochem, Munich, Germany.

Cell culture

Human primary tubular epithelial cells (hPTEC) were isolated from renal cortical tissues collected from healthy parts of tumor-nephrectomies essentially as described previously [18]. Isolation of human cells was approved by the local ethics committee and written consent was obtained from all donors. In brief, after transport in Hank's BSS,

cortex tissue was cut into 1 mm³ pieces and digested with collagenase type II (Gibco, Karlsruhe, Germany) and DNase I grade II (Roche Diagnostics, Mannheim, Germany) for 60 min. Next, cell suspension was sieved through 100 µm and 70 µm meshes. After a washing step with HBSS, cells were seeded in epithelial cell selective medium (DMEM/Ham's F12 medium containing 2 mM L-glutamine, 100 U/ml penicillin, 100 µg/ml streptomycin, insulin-transferrin-selenium supplement, 10 ng/ml epidermal growth factor, 36 ng/ml hydrocortisone and 4 pg/ml triiodothyronine) in the presence of 0.5% FCS. After 1–2 days, medium was replaced by FCS-free medium. Cells were subcultured by application of trypsin. For experiments, hPTEC were seeded in medium containing 2.5% FCS to facilitate cell attachment, and medium was replaced after 24 h to FCS-free epithelial cell selective medium. Bright field pictures were recorded by Olympus CK40 microscope (Olympus, Hamburg, Germany) using Leica DC Viewer software (Leica, Herbrugg, Switzerland).

About five days after isolation at passage one cells were routinely analyzed for the content of proximal and distal cell by staining for N- and E-cadherin, respectively. The ratio of distal and proximal cells varied with most preparation containing a higher percentage of distal cells (about 70%).

Polarized tubular epithelial cells were obtained by culturing primary epithelial cells for 8 days on permeable transwell inserts (Millicell PCF, Millipore, Schwalbach, Germany).

Transepithelial electrical resistance (TEER)

Transepithelial electrical resistance was measured using a commercially available epithelial voltohmmeter and a set of so-called chopstick electrodes (EVOM, World Precision Instruments, Berlin, Germany). All measurements were corrected for resistance of culture medium and empty inserts.

Western blot analysis

Cell culture supernatants were precipitated with ethanol. Western blot analyses were performed essentially as described before [20] using the following antibodies: CTGF (SC-14939, Santa Cruz), phospho-ERK 1/2 and ERK 1/2 (Cell Signaling), and fibronectin HNF7.1 developed by R.J Klebe obtained from the Developmental Studies Hybridoma Bank developed under the auspices of the NICHD and maintained by The University of Iowa, Department of Biology, Iowa City, IA 52242. The immunoreactive bands were quantified using the luminescent image analyzer (LAS-1000 Image Analyzer, Fujifilm, Berlin, Germany) and AIDA 4.15 image analyzer software (Raytest, Berlin, Germany).

Real time RT-PCR

RNA of cells cultured in inserts was isolated and analyzed as described previously [20].

Immunocytochemistry

Cells were fixed with paraformaldehyde (3.5% in PBS) for 10 min and afterwards permeabilized by 0.5% Triton X-100 in PBS for 10 min. After washing three times with PBS, cells were blocked in 1% BSA in PBS. Antibodies used for Immunocytochemistry: E-cadherin (Abcam), N-cadherin (Santa Cruz), CTGF (Santa Cruz), acetylated tubulin (Sigma), Smad2/3 (Cell Signaling). Alexa Fluor 488- or 555-conjugated secondary antibodies were from Invitrogen.

After mounting, slides were viewed using a Nikon Eclipse 80i fluorescent microscope and digital images recorded by Visitron Systems 7.4 Slider camera (Diagnostic Instruments, Sterling Heights, MI, USA) using Spot Advanced software (Diagnostic Instruments). Three dimensional images were evaluated by epifluorescence microscopy including Apotome technique (Zeiss, Göttingen, Germany).

Recombinant CTGF

A full length human CTGF cDNA, kindly provided by M. Bauer, Med. Clinic 1, Erlangen, was expressed in HEK293 cells. His-tagged CTGF was purified from cell culture supernatants using Ni-columns (Protino, Machery and Nagel, Düren, Germany). Purity of the protein was shown by silver staining of SDS polyacrylamide gels and estimated to be over 90%.

Statistical analysis

To compare multiple conditions, statistical significance was calculated by one-way ANOVA with Dunnett's post hoc test using GraphPad software. A value of $P < 0.05$ was considered to indicate significant differences.

Abbreviations

hPTEC: Human Primary Tubular cells; LPA: Lysophosphatidic Acid; TEER: Transepithelial Electrical Resistance; TGF-β: Transforming Growth Factor Beta; UUU: Unilateral Ureter Obstruction.

Competing interests

The authors declare that they have no competing interests.

Authors' contributions

JZ and AE performed the experiments, BK analyzed data and wrote the manuscript; MGS designed the study, analyzed data, drafted and wrote the manuscript. All authors read and approved the final version of the manuscript.

Acknowledgements

We are grateful to B. Wullich and his team, Department of Urology, University of Erlangen-Nürnberg, for providing us with kidney tissue. The expert technical assistance of R. Zitzmann and M. Rehm is highly appreciated. We thank S. Kroening for help with the preparation of primary cells. This study was supported by the Marohn Stiftung of the University of Erlangen-Nuremberg and by the Department of Nephrology and Hypertension,

University of Erlangen-Nürnberg. J.Z. was recipient of a study grant from the Deutsche Forschungsgemeinschaft, SFB 423.

Author details

¹Department of Nephrology and Hypertension, Friedrich-Alexander Universität Erlangen-Nürnberg, Loschgestrasse 8, Erlangen 91054, Germany.

²Department of Cellular and Molecular Physiology, Friedrich-Alexander Universität Erlangen-Nürnberg, Waldstrasse 6, Erlangen 91054, Germany.

Received: 15 May 2012 Accepted: 16 August 2012

Published: 2 September 2012

References

- Chen XM, Qi W, Pollock CA: CTGF and chronic kidney fibrosis. *Front Biosci (Schol Ed)* 2009, **1**:132–141.
- Phanish MK, Winn SK, Dockrell ME: Connective tissue growth factor-(CTGF, CCN2)—a marker, mediator and therapeutic target for renal fibrosis. *Nephron Exp Nephrol* 2010, **114**:e83–e92.
- Boor P, Floege J: Chronic kidney disease growth factors in renal fibrosis. *Clin Exp Pharmacol Physiol* 2011, **38**:391–400.
- Tang SC, Leung JC, Lai KN: Diabetic tubulopathy: an emerging entity. *Contrib Nephrol* 2011, **170**:124–134.
- Wolf G: Renal injury due to renin-angiotensin-aldosterone system activation of the transforming growth factor-beta pathway. *Kidney Int* 2006, **70**:1914–1919.
- Li BX, Tang YT, Wang W, Xie YY, Wang NS, Yuan QJ, Zhang FF, Peng ZZ, Hu GY, Tao LJ: Fluorofenidone attenuates renal interstitial fibrosis in the rat model of obstructive nephropathy. *Mol Cell Biochem* 2011, **354**:263–273.
- Ito Y, Aten J, Bende RJ, Oemar BS, Rabelink TJ, Weening JJ, Goldschmeding R: Expression of connective tissue growth factor in human renal fibrosis. *Kidney Int* 1998, **53**:853–861.
- Ito Y, Aten J, Nguyen TQ, Joles JA, Matsuo S, Weening JJ, Goldschmeding R: Involvement of connective tissue growth factor in human and experimental hypertensive nephrosclerosis. *Nephron Exp Nephrol* 2011, **117**:e9–e20.
- Tam FW, Riser BL, Meeran K, Rambow J, Pusey CD, Frankel AH: Urinary monocyte chemoattractant protein-1 (MCP-1) and connective tissue growth factor (CCN2) as prognostic markers for progression of diabetic nephropathy. *Cytokine* 2009, **47**:37–42.
- Nguyen TQ, Tarnow L, Andersen S, Hovind P, Parving HH, Goldschmeding R, van Nieuwenhoven FA: Urinary connective tissue growth factor excretion correlates with clinical markers of renal disease in a large population of type 1 diabetic patients with diabetic nephropathy. *Diabetes Care* 2006, **29**:83–88.
- Shi Y, Tu Z, Bao J, Sun H, Wang W, Luo G, Li S, Li Y, Bu H: Urinary connective tissue growth factor increases far earlier than histopathological damage and functional deterioration in early chronic renal allograft injury. *Scand J Urol Nephrol* 2009, **43**:390–399.
- Cheng O, Thuillier R, Sampson E, Schultz G, Ruiz P, Zhang X, Yuen PS, Mannon RB: Connective tissue growth factor is a biomarker and mediator of kidney allograft fibrosis. *Am J Transplant* 2006, **6**:2292–2306.
- Orphanides C, Fine LG, Norman JT: Hypoxia stimulates proximal tubular cell matrix production via a TGF-beta1-independent mechanism. *Kidney Int* 1997, **52**:637–647.
- Gerritsen KG, Peters HP, Nguyen TQ, Koeners MP, Wetzels JF, Joles JA, Christensen EI, Verroust PJ, Li D, Oliver N, et al: Renal proximal tubular dysfunction is a major determinant of urinary connective tissue growth factor excretion. *Am J Physiol Renal Physiol* 2010, **298**:F1457–F1464.
- Whitin JC, Bhamre S, Tham DM, Cohen HJ: Extracellular glutathione peroxidase is secreted basolaterally by human renal proximal tubule cells. *Am J Physiol Renal Physiol* 2002, **283**:F20–F28.
- Muto S, Furuse M, Kusano E: Claudins and renal salt transport. *Clin Exp Nephrol* 2012, **16**:61–67.
- Prozialeck WC, Edwards JR: Cell adhesion molecules in chemically-induced renal injury. *Pharmacol Ther* 2007, **114**:74–93.
- Kroening S, Neubauer E, Wullich B, Aten J, Goppelt-Struebe M: Characterization of connective tissue growth factor expression in primary cultures of human tubular epithelial cells: modulation by hypoxia. *Am J Physiol Renal Physiol* 2010, **298**:F796–F806.
- Nouwen EJ, Dauwe S, Van DBI, De Broe ME: Stage- and segment-specific expression of cell-adhesion molecules N-CAM, A-CAM, and L-CAM in the kidney. *Kidney Int* 1993, **44**:147–158.
- Kroening S, Neubauer E, Wessel J, Wiesener M, Goppelt-Struebe M: Hypoxia interferes with connective tissue growth factor (CTGF) gene expression in human proximal tubular cell lines. *Nephrol Dial Transplant* 2009, **24**:3319–3325.
- Phanish MK, Wahab NA, Hendry BM, Dockrell ME: TGF-beta1-induced connective tissue growth factor (CCN2) expression in human renal proximal tubule epithelial cells requires Ras/MEK/ERK and Smad signalling. *Nephron Exp Nephrol* 2005, **100**:e156–e165.
- Dockrell ME, Phanish MK, Hendry BM: Tgf-beta auto-induction and connective tissue growth factor expression in human renal tubule epithelial cells requires N-ras. *Nephron Exp Nephrol* 2009, **112**:e71–e79.
- Okudaïra S, Yukiura H, Aoki J: Biological roles of lysophosphatidic acid signaling through its production by autotaxin. *Biochimie* 2010, **92**:698–706.
- Lin ME, Herr DR, Chun J: Lysophosphatidic acid (LPA) receptors: signaling properties and disease relevance. *Prostaglandins Other Lipid Mediat* 2010, **91**:130–138.
- Levine JS, Koh JS, Triaca V, Lieberthal W: Lysophosphatidic acid: a novel growth and survival factor for renal proximal tubular cells. *Am J Physiol* 1997, **273**:F575–F585.
- de Vries B, Matthijsen RA, van Bijnen AA, Wolfs TG, Buurman WA: Lysophosphatidic acid prevents renal ischemia-reperfusion injury by inhibition of apoptosis and complement activation. *Am J Pathol* 2003, **163**:47–56.
- Pradere JP, Klein J, Gres S, Guigne C, Neau E, Valet P, Calise D, Chun J, Bascands JL, Saulnier-Blache JS, Schanstra JP: LPA1 receptor activation promotes renal interstitial fibrosis. *J Am Soc Nephrol* 2007, **18**:3110–3118.
- Heusinger-Ribeiro J, Eberlein M, Wahab NA, Goppelt-Struebe M: Expression of connective tissue growth factor in human renal fibroblasts: regulatory roles of RhoA and cAMP. *J Am Soc Nephrol* 2001, **12**:1853–1861.
- Eberlein M, Heusinger-Ribeiro J, Goppelt-Struebe M: Rho-dependent inhibition of the induction of connective tissue growth factor (CTGF) by HMG CoA reductase inhibitors (statins). *Br J Pharmacol* 2001, **133**:1172–1180.
- Samarin J, Rehm M, Krueger B, Waschke J, Goppelt-Struebe M: Up-regulation of connective tissue growth factor in endothelial cells by the microtubule-destabilizing agent combretastatin A-4. *Mol Cancer Res* 2009, **7**:180–188.
- Enck AH, Berger UV, Yu AS: Claudin-2 is selectively expressed in proximal nephron in mouse kidney. *Am J Physiol Renal Physiol* 2001, **281**:F966–F974.
- Amasheh S, Meiri N, Gitter AH, Schoneberg T, Mankertz J, Schulzke JD, Fromm M: Claudin-2 expression induces cation-selective channels in tight junctions of epithelial cells. *J Cell Sci* 2002, **115**:4969–4976.
- Furuse M, Furuse K, Sasaki H, Tsukita S: Conversion of zonulae occludentes from tight to leaky strand type by introducing claudin-2 into Madin-Darby canine kidney I cells. *J Cell Biol* 2001, **153**:263–272.
- Cicha I, Goppelt-Struebe M: Connective tissue growth factor: Context-dependent functions and mechanisms of regulation. *Biofactors* 2009, **35**:200–208.
- Samarakoon R, Goppelt-Struebe M, Higgins PJ: Linking cell structure to gene regulation: signaling events and expression controls on the model genes PAI-1 and CTGF. *Cell Signal* 2010, **22**:1413–1419.
- Muehlich S, Cicha I, Garlich CD, Krueger B, Posern G, Goppelt-Struebe M: Actin-dependent regulation of connective tissue growth factor (CTGF). *Am J Physiol Cell Physiol* 2007, **292**:1732–1738.
- Chaour B, Goppelt-Struebe M: Mechanical regulation of the Cyr61/CCN1 and CTGF/CCN2 proteins. *FEBS J* 2006, **273**:3639–3649.
- Busche S, Descot A, Julien S, Genth H, Posern G: Epithelial cell-cell contacts regulate SRF-mediated transcription via Rac-actin-MAL signalling. *J Cell Sci* 2008, **121**:1025–1035.
- Singla A, Dwivedi A, Saksena S, Gill RK, Alrefai WA, Ramaswamy K, Dudeja PK: Mechanisms of lysophosphatidic acid (LPA) mediated stimulation of intestinal apical Cl⁻/OH⁻ exchange. *Am J Physiol Gastrointest Liver Physiol* 2010, **298**:G182–G189.
- Murphy SJ, Dore JJ, Edens M, Coffey RJ, Barnard JA, Mitchell H, Wilkes M, Leof EB: Differential trafficking of transforming growth factor-beta receptors and ligand in polarized epithelial cells. *Mol Biol Cell* 2004, **15**:2853–2862.

41. Yakovich AJ, Huang Q, Du J, Jiang B, Barnard JA: **Vectorial TGFbeta signaling in polarized intestinal epithelial cells.** *J Cell Physiol* 2010, **224**:398–404.
42. Moyano JV, Greciano PG, Buschmann MM, Koch M, Matlin KS: **Autocrine transforming growth factor- β 1 activation mediated by integrin α β 3 regulates transcriptional expression of laminin-332 in Madin-Darby canine kidney epithelial cells.** *Mol Biol Cell* 2010, **21**:3654–3668.
43. Feldman G, Kiely B, Martin N, Ryan G, McMorrow T, Ryan MP: **Role for TGF-beta in cyclosporine-induced modulation of renal epithelial barrier function.** *J Am Soc Nephrol* 2007, **18**:1662–1671.
44. Pierucci-Alves F, Yi S, Schultz BD: **Transforming growth factor beta 1 induces tight junction disruptions and loss of transepithelial resistance across porcine vas deferens epithelial cells.** *Biol Reprod* 2012, **86**:36.
45. Wang SN, LaPage J, Hirschberg R: **Role of glomerular ultrafiltration of growth factors in progressive interstitial fibrosis in diabetic nephropathy.** *Kidney Int* 2000, **57**:1002–1014.
46. Derynck R, Zhang YE: **Smad-dependent and Smad-independent pathways in TGF-beta family signalling.** *Nature* 2003, **425**:577–584.
47. Margadant C, Sonnenberg A: **Integrin-TGF-beta crosstalk in fibrosis, cancer and wound healing.** *EMBO Rep* 2010, **11**:97–105.
48. Guo X, Wang XF: **Signaling cross-talk between TGF-beta/BMP and other pathways.** *Cell Res* 2009, **19**:71–88.
49. Secker GA, Shortt AJ, Sampson E, Schwarz QP, Schultz GS, Daniels JT: **TGFbeta stimulated re-epithelialisation is regulated by CTGF and Ras/MEK/ERK signalling.** *Exp Cell Res* 2008, **314**:131–142.
50. Lee MK, Pardoux C, Hall MC, Lee PS, Warburton D, Qing J, Smith SM, Derynck R: **TGF-beta activates Erk MAP kinase signalling through direct phosphorylation of ShcA.** *EMBO J* 2007, **26**:3957–3967.
51. Wahab NA, Brinkman H, Mason RM: **Uptake and intracellular transport of the connective tissue growth factor: a potential mode of action.** *Biochem J* 2001, **359**:89–97.
52. Chen Y, Segarini P, Raoufi F, Bradham D, Leask A: **Connective tissue growth factor is secreted through the Golgi and is degraded in the endosome.** *Exp Cell Res* 2001, **271**:109–117.
53. Kawata K, Kubota S, Eguchi T, Aoyama E, Moritani NH, Kondo S, Nishida T, Takigawa M: **Role of LRP1 in transport of CCN2 protein in chondrocytes.** *J Cell Sci* 2012, **125**:2965–2972.
54. Okada H, Kikuta T, Kobayashi T, Inoue T, Kanno Y, Takigawa M, Sugaya T, Kopp JB, Suzuki H: **Connective tissue growth factor expressed in tubular epithelium plays a pivotal role in renal fibrogenesis.** *J Am Soc Nephrol* 2005, **16**:133–143.

doi:10.1186/1478-811X-10-25

Cite this article as: Zuehlke et al.: Vectorial secretion of CTGF as a cell-type specific response to LPA and TGF- β in human tubular epithelial cells. *Cell Communication and Signaling* 2012 **10**:25.

Submit your next manuscript to BioMed Central and take full advantage of:

- Convenient online submission
- Thorough peer review
- No space constraints or color figure charges
- Immediate publication on acceptance
- Inclusion in PubMed, CAS, Scopus and Google Scholar
- Research which is freely available for redistribution

Submit your manuscript at
www.biomedcentral.com/submit

