

RESEARCH

Open Access

Intracellular distribution of amyloid beta peptide and its relationship to the lysosomal system

Lin Zheng^{1*}, Angel Cedazo-Minguez², Martin Hallbeck^{3,4}, Fredrik Jerhammar⁵, Jan Marcusson¹ and Alexei Terman⁶

Abstract

Background: Amyloid beta peptide (A β) is the main component of extraneuronal senile plaques typical of Alzheimer's disease (AD) brains. Although A β is produced by normal neurons, it is shown to accumulate in large amounts within neuronal lysosomes in AD. We have recently shown that under normal conditions the majority of A β is localized extralysosomally, while oxidative stress significantly increases intralysosomal A β content through activation of macroautophagy. It is also suggested that impaired A β secretion and resulting intraneuronal increase of A β can contribute to AD pathology. However, it is not clear how A β is distributed inside normal neurons, and how this distribution is effected when A β secretion is inhibited.

Methods: Using retinoic acid differentiated neuroblastoma cells and neonatal rat cortical neurons, we studied intracellular distribution of A β by double immunofluorescence microscopy for A β_{40} or A β_{42} and different organelle markers. In addition, we analysed the effect of tetanus toxin-induced exocytosis inhibition on the intracellular distribution of A β .

Results: Under normal conditions, A β was found in the small cytoplasmic granules in both neurites and perikarya. Only minor portion of A β was colocalized with trans-Golgi network, Golgi-derived vesicles, early and late endosomes, lysosomes, and synaptic vesicles, while the majority of A β granules were not colocalized with any of these structures. Furthermore, treatment of cells with tetanus toxin significantly increased the amount of intracellular A β in both perikarya and neurites. Finally, we found that tetanus toxin increased the levels of intralysosomal A β although the majority of A β still remained extralysosomally.

Conclusion: Our results indicate that most A β is not localized to Golgi-related structures, endosomes, lysosomes secretory vesicles or other organelles, while the suppression of A β secretion increases intracellular intra- and extralysosomal A β .

Keywords: Alzheimer disease, Amyloid β -protein, Colocalization, Exocytosis, Immunocytochemistry, Lysosomes

Introduction

The mechanisms behind Alzheimer disease (AD), the main cause of senile dementia, are poorly understood. One of the important hallmarks of AD is the formation of extracellular senile plaques, preferentially composed of amyloid beta-protein [1]. The most common isoforms of A β are A β_{40} (90%) and A β_{42} (10%), the latter being more toxic, more prone to aggregation, more resistant to degradation, and specifically increases in all forms of familial AD [2].

A β is proteolytically cleaved from a large transmembrane amyloid precursor protein (APP) by β and γ secretases [3]. APP is normally synthesized in the endoplasmic reticulum (ER) and transported to the Golgi apparatus. Eventually it can be trafficked from the trans-Golgi network (TGN) to the cell surface and secreted into extracellular space [4], recycled back to the Golgi complex for further packaging and trafficking [5] or reinternalized from the cell surface into the endosomal-lysosomal system via endocytosis [6-8]. A β generation from APP is thought to occur in a variety of organelles where APP, β and γ secretase reside. Thus, A β has been found in many intracellular sites, such as ER, Golgi complexes, mitochondria, endosomes, lysosomes, multivesicular bodies (MVB), and

* Correspondence: lin.zheng@liu.se

¹Division of Geriatric Medicine, Department of Clinical and Experimental Medicine, IKE, Faculty of Health Sciences, Linköping University, Linköping SE-581 85, Sweden

Full list of author information is available at the end of the article

cytosol (reviewed in [9]). Autophagic vacuoles have also been shown involved in the production of A β [10].

The toxicity of A β and its involvement in senile plaque formation are considered important pathophysiological targets for primary prevention in AD (reviewed in [11]). It has been proposed that senile plaques originate from intraneuronal A β as a result of its release after neuronal death [12]. Intracellular A β has been pointed out to be involved in early stages of the disease, directly causing neurotoxicity and initiating AD pathology [12-19]. It has been reported recently that A β -related synapse damage and memory impairment in AD-transgenic mice correlated with intracellular levels of A β but not with plaque burden [20]. Moreover, cultured neurons from AD-transgenic mice showed reduced secretion and enhanced intracellular accumulation of A β [21]. Much evidence supports that the lysosomal system, a vacuolar compartment with acidic pH (3.5-6.0), is associated with A β generation and neurotoxicity [22-26]. In AD and experimental AD models, A β has been detected in abnormally enlarged endosomes [12,17,27], autophagosomes [10], and lysosomes [28-30].

Our previous studies showed that normobaric hyperoxia (a chronic, mild oxidative stress) enhanced macroautophagy, inducing intralysosomal A β accumulation, lysosomal membrane permeabilization and consequent apoptosis [29-32]. However, it is not clear how A β is distributed in relation to the lysosomal system and other organelles normally and how and why this distribution is changed in AD. Here we studied the relation of A β to the lysosomal vacuolar compartment (early and late endosomes, lysosomes and autolysosomes) as well as to cellular structures associated with related process of protein secretion (such as Golgi-derived secretory vesicles and synaptic vesicles) using double immunofluorescence microscopy (for A β and different organelle markers). RA-differentiated neuroblastoma cells and neonatal rat cortical neurons were used as *in vitro* models. Cells were cultured under normal conditions as well as in the presence of the exocytosis inhibitor, tetanus toxin (TeNT).

Materials and methods

Human neuroblastoma SH-SY5Y cell culture

Human SH-SY5Y neuroblastomacells were obtained from the American Type Culture Collection (Rockville, MD, USA) and cultured in Dulbecco's Modified Eagle Medium (DMEM; Gibco, Paisley, UK) supplemented with 4500 mg/l glucose, 110 mg/l sodium pyruvate, 584 mg/l glutamine, 10% fetal bovine serum, 50 IU/ml penicillin G and 50 mg/ml streptomycin in 25 cm² plastic culture flasks (Corning, Corning, NY, USA) at 37°C, with 5% CO₂. For differentiation, neuroblastoma cells were exposed to 10 μ M all-trans retinoic acid (RA,

Sigma, St. Louis, MO, USA) for 14 days. The medium was changed every second day.

Neonatal rat cortical neuron culture

Primary culture of neonatal rat cortical neurons was prepared as described previously [33]. Neurons were obtained from the cerebral cortex of newborn Wistar rats and plated onto 35 mm Petri dishes coated with poly-D-lysine (Sigma). The culture medium consisted of DMEM (Gibco) containing 20% fetal bovine serum, 2.5 μ g/ml insulin and 45 mM glucose. The percentage of fetal bovine serum was gradually reduced to 5%. The medium was changed twice a week.

Inhibition of exocytosis

Tetanus toxin (TeNT, Sigma), an exocytosis inhibitor, was used to block the transport of secretory vesicles to the plasma membrane [34]. RA differentiated neuroblastoma cells and primary neurons were treated with 5 or 20 nM tetanus toxin (TeNT) respectively for 24 h.

Antibodies

Primary anti-A β ₁₋₄₂ antibodies [35] (Chemicon, Temecula, CA, USA), and anti-A β ₁₋₄₀ antibodies [36,37] (Chemicon, Temecula, CA, USA), were rabbit polyclonal, while anti-human-Rab8 [38] (marker for TGN and Golgi-derived secretory vesicles, BD biosciences, Franklin Lakes, NJ, USA), anti-Rab9 [39] (marker for TGN and late endosomes, Abcam, Cambridge, UK), anti-Rab5 (marker for early endosomes, Pharmingen, San Diego, CA, USA), anti-LAMP-2 (marker for lysosomes and late endosomes, Southern Biotechnology, Birmingham, AL, USA), anti-VAMP 2 (synaptobrevin/VAMP 2, marker for synaptic vesicles, Synaptic Systems, Göttingen, Germany), and anti-Rab3 (marker for synaptic vesicles, Synaptic Systems) antibodies were mouse monoclonal IgG. Secondary antibodies were Alexa Fluor 488-conjugated goat anti-rabbit IgG and Alexa Fluor 546-conjugated goat anti-mouse IgG (both from Molecular Probes, Eugene, OR, USA).

The anti-A β ₄₂ antibodies (Chemicon) are specific for C-termini of A β peptide, and they do not cross-react with full-length APP, APP C-terminal fragments (CTF), or with A β ₄₀ [40]. We have also tested the specificity of anti-A β ₄₀ and anti-A β ₄₂ antibodies doing double immunostaining for A β and APP in control neuroblastoma cells. The anti-APP antibodies (Zymed, mouse anti-APP, clone LN27) recognize epitope within the first 200 amino acids in the APP N-terminus and react with all three known APP proteins. There is no cross-reactivity between A β and APP.

Immunofluorescence microscopy

For immunofluorescence microscopy, cells on coverslips were washed twice in phosphate-buffered saline (PBS)

and fixed in 4% neutral phosphate-buffered formaldehyde for 20 min at room temperature, rinsed in PBS, permeabilized with 0.1% saponin in PBS containing 5% serum for 20 min and incubated with primary antibodies for either single or double immunofluorescence for 1 h, followed by rinsing in PBS and 1 h incubation with secondary antibodies. Dilutions were 1:100 and 1:400 for primary and secondary antibodies, respectively. For double immunostaining, different primary or secondary antibodies were applied simultaneously. The experiments were repeated at least three times.

After washing in PBS and distilled water, the specimens were mounted in Vectashield containing DAPI (Vector Laboratories, H-1200) and inspected with an inverted confocal laser scanning microscope (LSM 510 META, Zeiss) using a 488 nm argon laser and 543 nm helium-neon laser. For colocalization assessment, optical sections were no thicker than 0.6 μ M. We also performed Nikon Microphot-SA fluorescence microscopy using a standard FITC / Texas Red double band-pass filter. Images were taken with a Hamamatsu ORCA 100 color digital camera (Hamamatsu, Japan). Images were prepared with Adobe Photoshop 7.0 (Adobe System).

Results

Exposure of neuroblastoma SH-SY5Y cells to RA for two weeks resulted in their differentiation, which was characterized by the suppression of mitotic activity and development neurites (Figure 1A and C). Neonatal cortical neurons showed multiple anastomosing neurites. (Figure 1B and D). $A\beta_{42}$ immunostaining showed intracellular localization of $A\beta_{42}$ in both cell types. $A\beta$

granules were larger and more abundant in neurites than in perikarya (Figure 1).

To investigate intracellular localization of $A\beta$ and its relationship with the lysosomal system and other organelles, RA differentiated neuroblastoma cells cultured under normal conditions were double immunostained for monomeric $A\beta$ ($A\beta_{40}$ and $A\beta_{42}$) and different organelle-specific proteins. As shown in Figure 2, very few $A\beta_{42}$ positive granules is colocalized with rab8 (TGN and Golgi derived vesicles marker), rab9 (TGN and late endosome marker), LAMP-2 (late endosome and lysosome marker), rab5 (early endosome marker), rab3 (exocytotic vesicle marker) or VAMP2 (or synaptobrevin, marker for synaptic vesicles). The overwhelming majority of $A\beta_{42}$ granules were not colocalized with any of the markers. As shown in Figure 3, the intracellular distribution of $A\beta_{40}$ is more diffused than that of $A\beta_{42}$. Double immunostaining of $A\beta_{40}$ and different organelle markers showed similar results regarding colocalization with organelles (Figure 3).

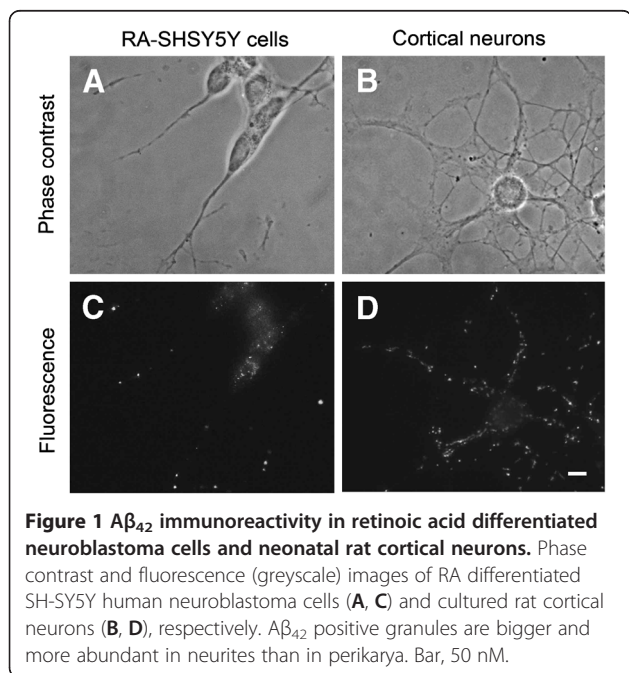
To study $A\beta$ localization in relation with different subcellular compartments, we performed immunogold electron microscopy using antibodies for $A\beta_{40}$ and $A\beta_{42}$. Low amount of $A\beta$ labeling was found in the endoplasmic reticulum, Golgi complexes, lysosomal compartment and also mitochondria, but it was particularly abundant in the cytosol, usually in the form of clusters (Zheng et al., unpublished results).

To study whether $A\beta$ relation to lysosomes depends on its secretion, RA differentiated neuroblastoma cells were exposed to the exocytosis inhibitor TeNT, followed by double immunostaining for $A\beta_{42}$ and LAMP-2. Cells were cultured under normal conditions (control) or treated with 5 nM TeNT for 24 h. The staining for both $A\beta_{42}$ and LAMP-2 was brighter after the treatment with TeNT, suggesting the increase in the amount of intracellular $A\beta_{42}$ as well as in the size of the lysosomal compartment. Both the size and the number of $A\beta_{42}$ -positive granules was increased after TeNT administration. Furthermore, although most $A\beta_{42}$ granules were still found extralysosomally, more of them than in untreated cells were colocalized with LAMP-2 positive structures (Figure 4).

The effect of exocytosis inhibition on the intracellular distribution of $A\beta_{42}$ was also studied using neonatal cortical neurons, which were exposed to 20 nM TeNT for 24 h. Phase contrast images show increased neuronal damage after TeNT treatment as compared to controls, while immunofluorescence microscopy reveals larger and more abundant $A\beta_{42}$ positive granules along the neuritis, reflecting disturbed $A\beta$ secretion and intraneuronal $A\beta$ accumulation (Figure 5).

Discussion

A large number of studies have explored the intracellular sites of $A\beta$ production, mostly in AD models. $A\beta_{42}$ and



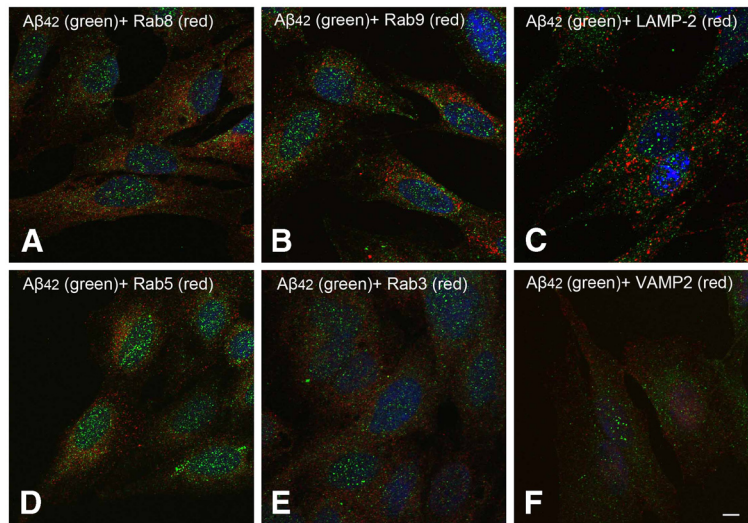


Figure 2 Double immunostaining for Aβ₄₂ (green fluorescence) and different subcellular markers (red fluorescence) in RA differentiated SH-SY5Y cells. (A) Rab8 (Golgi derived vesicles marker), (B) Rab9 (trans-Golgi network, Golgi-derived vesicles and late endosome marker), (C) LAMP-2 (late endosome and lysosome marker), (D) Rab5 (early endosome marker), (E) Rab3 (exocytotic vesicle marker) and (F) VAMP2 (synaptobrevin, marker for synaptic organelle markers). Scale bar, 5 μm.

Aβ₄₀ monomers have been previously demonstrated in ER [6-8], TGN [41] and post-TGN secretory vesicles [8], mitochondria [42], endosomes [27], lysosomes [43], multi-vesicular bodies (MVB) [44], and cytosol [12,45-47]. However, little is known about intracellular localization of Aβ in normal conditions, when Aβ is not overproduced.

In this study, we demonstrated that in differentiated neuroblastoma cells cultured under normal in vitro conditions, only little Aβ (including Aβ₄₂ and Aβ₄₀) showed colocalization with organelles such as TGN, Golgi-derived vesicles, early and late endosomes, lysosomes, or

exocytotic vesicles, while the greater part of Aβ was located in the cytosol or in undetermined compartments.

The absence of major Aβ immunoreactivity in these cellular compartments, in which it was found in AD, as well as in cellular and in vivo AD models, suggests that, under normal conditions, this peptide is either relocated, or degraded, or secreted extracellularly. The fact that lysosomes showed little Aβ immunoreactivity would suggest that cells are able to perform a rapid proteolytic digestion of this peptide under normal biological conditions. In support of this hypothesis, we have previously shown that

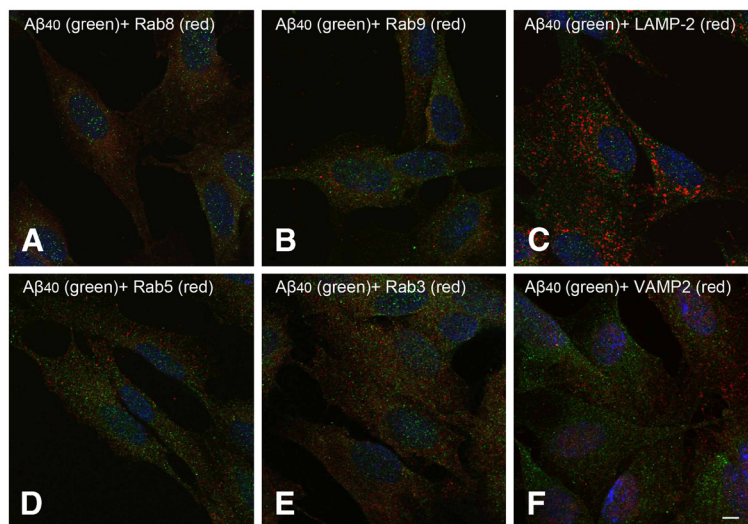


Figure 3 Double immunostaining for Aβ₄₀ (green fluorescence) and different subcellular markers (red fluorescence) in RA differentiated SH-SY5Y cells. (A-F), see Figure 2. Scale bar, 5 μm.

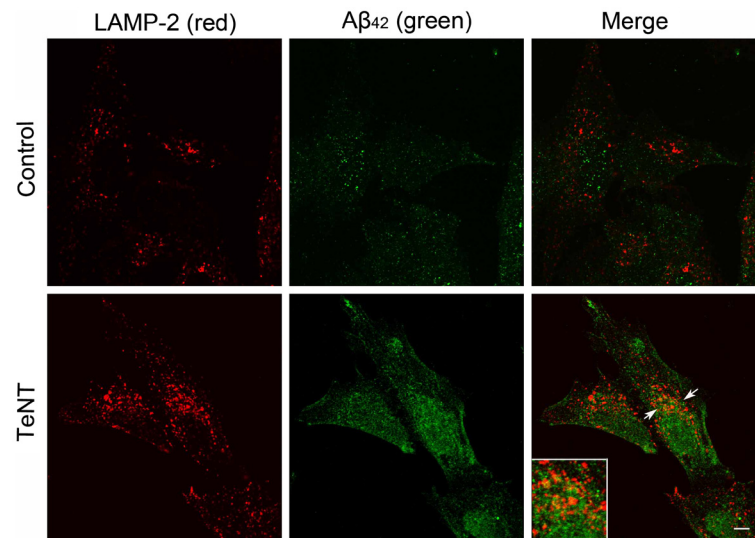


Figure 4 Double immunostaining for A β_{42} (green fluorescence) and lysosomal/late endosomal marker LAMP2 (red fluorescence) in RA differentiated SH-SY5Y cells cultured under normal conditions or exposed to exocytosis inhibitor tetanus toxin (TeNT, 5 nM) for 24 h. Both A β_{42} and LAMP-2 specific fluorescence are increased in tetanus toxin exposed cells, and the colocalization of A β_{42} with LAMP-2 positive structures (arrow and corresponding inset) is increased after TeNT treatment. Scale bar, 5 μ m.

inhibition of lysosomal enzymes induces A β accumulation within the lysosomal compartment [29].

In addition, we have found that inhibition of exocytosis by TeNT induced a general increase of intracellular A β ,

both intra- and extralysosomal. As we previously reported [30], the intralysosomal A β accumulation can be mediated by enhanced A β autophagy. It is also possible that inhibition of exocytosis results in A β accumulation along the

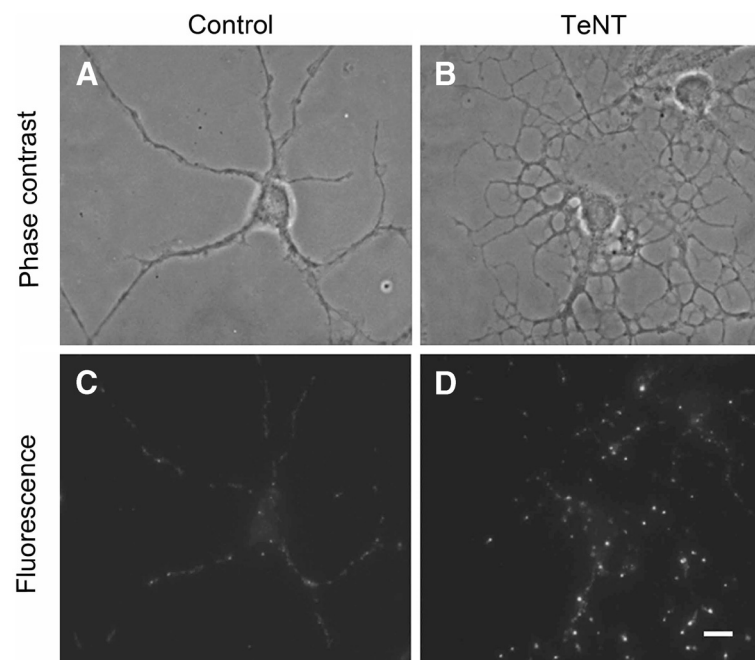


Figure 5 A β_{42} immunoreactivity (greyscale) of neonatal rat cortical neurons (A, C) cultured (under normal conditions (control) or (B, D) exposed to 20 nM exocytosis inhibitor tetanus toxin (TeNT) for 24 h. (A and B) phase contrast images, (B and D) fluorescence images of corresponding cells. Both drugs induce intracellular accumulation of A β_{42} . Bar, 50 nM. Intraneuronal A β_{42} is increased and accumulated in the neurites.

secretory pathway, including ER, Golgi apparatus, transport vesicles and secretory vesicles [48].

Although under normal conditions late endosomes and lysosomes seem to be free of A β , this is not the case for AD neurons, in which A β has been demonstrated intralysosomally [10,27,28]. It is not clear what causes these changes and how A β relocation to lysosomes contributes to the pathogenesis of AD. One possible explanation is that oxidative stress might enhance autophagy, leading to intralysosomal A β accumulation, consequent lysosomal membrane damage and release of lysosomal enzymes to the cytosol, culminating in apoptosis [29,30].

In AD, A β has been shown to accumulate within lysosomes, apparently promoting neuronal death through lysosomal destabilization [22,25,49]. As we previously demonstrated, intralysosomal A β accumulation can be triggered by oxidative stress and consequent activation of macroautophagy [29,30]. On the other hand, A β has been shown to induce oxidant-mediated autophagic cell death in cultured cells [50], while antioxidants can protect cells from A β -mediated oxidative damage [51].

The fact that in the majority of AD cases there is no consistent overproduction of A β suggests that deficits in its degradation could lie behind the pathogenesis of the disease. On the other hand, intracellular accumulation of A β is proposed to compromise normal neuronal function in AD. Our findings demonstrate that, under normal conditions, intracellular A β (including A β ₄₂ and A β ₄₀) is mainly associated with cytosolic structures and, to a large extent, is secreted from the cells. They may also suggest that deficits in secretion or lysosomal processing would result in intracellular A β accumulation and its translocation to the cellular organelles, as seen in AD and its models [12,21,52,53]. Our finding may contribute to better understanding of AD pathogenesis, and may help develop new therapeutic strategies against AD (reviewed in [54]).

Abbreviations

AD: Alzheimer disease; A β : Amyloid β -protein; APP: Amyloid Precursor Protein; ER: Endoplasmic Reticulum; PBS: Phosphate-buffered Saline; LAMP-2: Lysosomal Associated Membrane Protein-2; MPRs: Mannose 6-phosphate Receptors; RA: Retinoic Acid; TeNT: Tetanus Toxin; TGN: Trans Golgi network.

Competing interests

The author(s) declare that they have no competing interests.

Authors' contributions

LZ carried out experiments, participated in manuscript writing and revision, AC-M participated in project design and manuscript writing, MH participated in project design, FJ participated in part of experiments, JM participated in project design, AT participated in project design, manuscript writing and revision. All authors read and approved the final manuscript.

Acknowledgments

This work was supported by the Gustav V and Queen Victoria Foundation (JM), County Council of Östergötland (JM, LZ, MH), Stiftelsen Olle Engkvist Byggmästare (LZ), Stiftelsen för Gamla Tjänarinnor (LZ, AC-M), Loo and Hans Ostermans foundation (LZ), Gun och Bertil Stohnes Stiftelse (LZ, AC-M), Lions

Forskningsfond (LZ), Svenska Lundbeckstiftelsen (LZ), Karolinska Institute Fund for Geriatric Research (AC-M), Alice och Knut Wallenberg Stiftelse (AC-M), Swedish Alzheimer Foundation (MH) and The Swedish Brain Power (AC-M).

Author details

¹Division of Geriatric Medicine, Department of Clinical and Experimental Medicine, IKE, Faculty of Health Sciences, Linköping University, Linköping SE-581 85, Sweden. ²KI-AlzheimerDisease Research Center, NVS, Novum, Karolinska Institutet, Stockholm SE-141 57, Sweden. ³Division of Pathology, Department of Clinical and Experimental Medicine, IKE, Faculty of Health Science, Linköping University, Linköping SE-581 85, Sweden. ⁴Department of Pathology, Linköping University Hospital, Linköping SE-581 85, Sweden. ⁵Experimental Pathology, Department of Clinical and Experimental Medicine, IKE, Faculty of Health Science, Linköping University, Linköping SE-581 85, Sweden. ⁶Department of Clinical Pathology and Cytology, Karolinska University Hospital, Stockholm SE-141 86Huddinge, Sweden.

Received: 5 January 2012 Accepted: 13 September 2012

Published: 26 September 2012

References

1. Masters CL, Beyreuther K: Pathways to the discovery of the Abeta amyloid of Alzheimer's disease. *J Alzheimers Dis* 2006, **9**(3 Suppl):155-161.
2. Selkoe DJ: The genetics and molecular pathology of Alzheimer's disease: roles of amyloid and the presenilins. *Neural Clin* 2000, **18**(4):903-922.
3. Selkoe DJ: Alzheimer's disease: genes, proteins, and therapy. *Physiol Rev* 2001, **81**(2):741-766.
4. Sisodia SS: Beta-amyloid precursor protein cleavage by a membrane-bound protease. *Proc Natl Acad Sci USA* 1992, **89**(13):6075-6079.
5. Rogava E, et al: The neuronal sortilin-related receptor SORL1 is genetically associated with Alzheimer disease. *Nat Genet* 2007, **39**(2):168-177.
6. Cook DG, et al: Alzheimer's A beta(1-42) is generated in the endoplasmic reticulum/intermediate compartment of NT2N cells. *Nat Med* 1997, **3**(9):1021-1023.
7. Hartmann T, et al: Distinct sites of intracellular production for Alzheimer's disease A beta40/42 amyloid peptides. *Nat Med* 1997, **3**(9):1016-1020.
8. Greenfield JP, et al: Endoplasmic reticulum and trans-Golgi network generate distinct populations of Alzheimer beta-amyloid peptides. *Proc Natl Acad Sci USA* 1999, **96**(2):742-747.
9. LaFerla FM, Green KN, Oddo S: Intracellular amyloid-beta in Alzheimer's disease. *Nat Rev Neurosci* 2007, **8**(7):499-509.
10. Yu WH, et al: Macroautophagy—a novel Beta-amyloid peptide-generating pathway activated in Alzheimer's disease. *J Cell Biol* 2005, **171**(1):87-98.
11. Serge G, et al: Prevention strategies for Alzheimer's disease. *Translational Neurodegeneration* 2012, **1**(13). doi:10.1186/2047-9158-1-13.
12. Gouras GK, et al: Intraneuronal Abeta42 accumulation in human brain. *Am J Pathol* 2000, **156**(1):15-20.
13. Naslund J, et al: Correlation between elevated levels of amyloid beta-peptide in the brain and cognitive decline. *JAMA* 2000, **283**(12):1571-1577.
14. Gouras GK, et al: Intraneuronal beta-amyloid accumulation and synapse pathology in Alzheimer's disease. *Acta Neuropathol* 2010, **119**(5):523-541.
15. D'Andrea MR, et al: Evidence that neurones accumulating amyloid can undergo lysis to form amyloid plaques in Alzheimer's disease. *Histopathology* 2001, **38**(2):120-134.
16. Wirths O, et al: Intraneuronal Abeta accumulation precedes plaque formation in beta-amyloid precursor protein and presenilin-1 double-transgenic mice. *Neurosci Lett* 2001, **306**(1-2):116-120.
17. Takahashi RH, et al: Intraneuronal Alzheimer abeta42 accumulates in multivesicular bodies and is associated with synaptic pathology. *Am J Pathol* 2002, **161**(5):1869-1879.
18. Gandy S, et al: Days to criterion as an indicator of toxicity associated with human Alzheimer amyloid-beta oligomers. *Ann Neurol* 2010, **68**(2):220-230.
19. Knobloch M, et al: Intracellular Abeta and cognitive deficits precede beta-amyloid deposition in transgenic arcAbeta mice. *Neurobiol Aging* 2007, **28**(9):1297-306.
20. Tampellini D, et al: Effects of synaptic modulation on beta-amyloid, synaptophysin, and memory performance in Alzheimer's disease transgenic mice. *J Neurosci* 2010, **30**(43):14299-14304.
21. Tampellini D, et al: Impaired beta-Amyloid Secretion in Alzheimer's Disease Pathogenesis. *J Neurosci* 2011, **31**(43):15384-15390.

22. Nixon RA, Cataldo AM, Mathews PM: The endosomal-lysosomal system of neurons in Alzheimer's disease pathogenesis: a review. *Neurochem Res* 2000, **25**(9-10):1161-1172.
23. Yu WH, et al: Autophagic vacuoles are enriched in amyloid precursor protein-secretase activities: implications for beta-amyloid peptide over-production and localization in Alzheimer's disease. *Int J Biochem Cell Biol* 2004, **36**(12):2531-2540.
24. Adamec E, et al: Up-regulation of the lysosomal system in experimental models of neuronal injury: implications for Alzheimer's disease. *Neurosci* 2000, **100**(3):663-675.
25. Yang AJ, et al: Loss of endosomal/lysosomal membrane impermeability is an early event in amyloid Abeta1-42 pathogenesis. *J Neurosci Res* 1998, **52**(6):691-698.
26. Liu J, et al: Predominant release of lysosomal enzymes by newborn rat microglia after LPS treatment revealed by proteomic studies. *J Proteome Res* 2008, **7**(5):2033-2049.
27. Cataldo AM, et al: Abeta localization in abnormal endosomes: association with earliest Abeta elevations in AD and Down syndrome. *Neurobiol Aging* 2004, **25**(10):1263-1272.
28. Langui D, et al: Subcellular topography of neuronal Abeta peptide in APPxPS1 transgenic mice. *Am J Pathol* 2004, **165**(5):1465-1477.
29. Zheng L, et al: Autophagy of amyloid beta-protein in differentiated neuroblastoma cells exposed to oxidative stress. *Neurosci Lett* 2006, **394**(3):184-189.
30. Zheng L, et al: Oxidative stress induces macroautophagy of amyloid beta-protein and ensuing apoptosis. *Free Radic Biol Med* 2009, **46**(3):422-429.
31. Zheng L, Marcusson J, Terman A: Oxidative stress and Alzheimer disease: the autophagy connection? *Autophagy* 2006, **2**(2):143-145.
32. Zheng L, et al: Oxidative stress induces intralysosomal accumulation of Alzheimer amyloid beta-protein in cultured neuroblastoma cells. *Ann N Y Acad Sci* 2006, **1067**:248-251.
33. Eva C, et al: Primary cultures of corticostriatal cells from newborn rats: a model to study muscarinic receptor subtypes regulation and function. *J Mol Neurosci* 1990, **2**(3):143-153.
34. Verderio C, et al: Tetanus toxin blocks the exocytosis of synaptic vesicles clustered at synapses but not of synaptic vesicles in isolated axons. *J Neurosci* 1999, **19**(16):6723-6732.
35. Kamal A, et al: Kinesin-mediated axonal transport of a membrane compartment containing beta-secretase and presenilin-1 requires APP. *Nature* 2001, **414**(6864):643-648.
36. Yankner BA, et al: Neurotoxicity of a fragment of the amyloid precursor associated with Alzheimer's disease. *Science* 1989, **245**(4916):417-420.
37. Kang J, et al: The precursor of Alzheimer's disease amyloid A4 protein resembles a cell-surface receptor. *Nature* 1987, **325**(6106):733-736.
38. Grigoriev I, et al: Rab6, Rab8, and MICAL3 cooperate in controlling docking and fusion of exocytotic carriers. *Curr Biol* 2011, **21**(11):967-974.
39. Diaz E, Schimmoller F, Pfeffer SR: A novel Rab9 effector required for endosome-to-TGN transport. *J Cell Biol* 1997, **138**(2):283-290.
40. Gouras GK, Almeida CG, Takahashi RH: Intraneuronal Abeta accumulation and origin of plaques in Alzheimer's disease. *Neurobiol Aging* 2005, **26**(9):1235-1244.
41. Xu H, et al: Generation of Alzheimer beta-amyloid protein in the trans-Golgi network in the apparent absence of vesicle formation. *Proc Natl Acad Sci USA* 1997, **94**(8):3748-3752.
42. Hansson Petersen CA, et al: The amyloid beta-peptide is imported into mitochondria via the TOM import machinery and localized to mitochondrial cristae. *Proc Natl Acad Sci USA* 2008, **105**(35):13145-13150.
43. Pasternak SH, Callahan JW, Mahuran DJ: The role of the endosomal/lysosomal system in amyloid-beta production and the pathophysiology of Alzheimer's disease: reexamining the spatial paradox from a lysosomal perspective. *J Alzheimers Dis* 2004, **6**(1):53-65.
44. Takahashi RH, et al: Oligomerization of Alzheimer's beta-amyloid within processes and synapses of cultured neurons and brain. *J Neurosci* 2004, **24**(14):3592-3599.
45. Billings LM, et al: Intraneuronal Abeta causes the onset of early Alzheimer's disease-related cognitive deficits in transgenic mice. *Neuron* 2005, **45**(5):675-688.
46. Buckig A, et al: Cytosolic and nuclear aggregation of the amyloid beta-peptide following its expression in the endoplasmic reticulum. *Histochem Cell Biol* 2002, **118**(5):353-360.
47. Lee EK, et al: Cytosolic amyloid-beta peptide 42 escaping from degradation induces cell death. *Biochem Biophys Res Commun* 2006, **344**(2):471-477.
48. Maxfield FR, Wustner D: Intracellular cholesterol transport. *J Clin Invest* 2002, **110**(7):891-898.
49. Ditaranto K, Tekirian TL, Yang AJ: Lysosomal membrane damage in soluble Abeta-mediated cell death in Alzheimer's disease. *Neurobiol Dis* 2001, **8**(1):19-31.
50. Wang H, et al: Amyloid-beta1-42 induces reactive oxygen species-mediated autophagic cell death in U87 and SH-SY5Y cells. *J Alzheimers Dis* 2010, **21**(2):597-610.
51. Ma G, Chen S: Diazoxide and N omega-nitro-L-arginine counteracted A beta 1-42-induced cytotoxicity. *Neuroreport* 2004, **15**(11):1813-1817.
52. Tampellini D, Gouras GK: Synapses, synaptic activity and intraneuronal abeta in Alzheimer's disease. *Front Aging Neurosci* 2010, **2**(13). doi:10.3389/fnagi.2010.00013.
53. Cirrito JR, et al: Synaptic activity regulates interstitial fluid amyloid-beta levels in vivo. *Neuron* 2005, **48**(6):913-922.
54. Shengdi Chen JCZ: Translational Neurodegeneration, a platform to share knowledge and experience in translational study of neurodegenerative diseases. *Translational Neurodegeneration* 2012, **1**(1). doi:10.1186/2047-9158-1-1.

doi:10.1186/2047-9158-1-19

Cite this article as: Zheng et al: Intracellular distribution of amyloid beta peptide and its relationship to the lysosomal system. *Translational Neurodegeneration* 2012 **1**:19.

Submit your next manuscript to BioMed Central and take full advantage of:

- Convenient online submission
- Thorough peer review
- No space constraints or color figure charges
- Immediate publication on acceptance
- Inclusion in PubMed, CAS, Scopus and Google Scholar
- Research which is freely available for redistribution

Submit your manuscript at
www.biomedcentral.com/submit

