

RESEARCH

Open Access

Yeast prions form infectious amyloid inclusion bodies in bacteria

Alba Espargaró¹, Anna Villar-Piqué², Raimon Sabaté^{3,4*} and Salvador Ventura^{1,2*}

Abstract

Background: Prions were first identified as infectious proteins associated with fatal brain diseases in mammals. However, fungal prions behave as epigenetic regulators that can alter a range of cellular processes. These proteins propagate as self-perpetuating amyloid aggregates being an example of structural inheritance. The best-characterized examples are the Sup35 and Ure2 yeast proteins, corresponding to *[PSI+]* and *[URE3]* phenotypes, respectively.

Results: Here we show that both the prion domain of Sup35 (Sup35-NM) and the Ure2 protein (Ure2p) form inclusion bodies (IBs) displaying amyloid-like properties when expressed in bacteria. These intracellular aggregates template the conformational change and promote the aggregation of homologous, but not heterologous, soluble prionogenic molecules. Moreover, in the case of Sup35-NM, purified IBs are able to induce different *[PSI+]* phenotypes in yeast, indicating that at least a fraction of the protein embedded in these deposits adopts an infectious prion fold.

Conclusions: An important feature of prion inheritance is the existence of strains, which are phenotypic variants encoded by different conformations of the same polypeptide. We show here that the proportion of infected yeast cells displaying strong and weak *[PSI+]* phenotypes depends on the conditions under which the prionogenic aggregates are formed in *E. coli*, suggesting that bacterial systems might become useful tools to generate prion strain diversity.

Keywords: Protein aggregation, Inclusion bodies, Prions, Sup35-NM, Ure2p, Amyloid fibrils, *E. coli*

Background

Mammalian prions cause fatal neurodegenerative disorders, like Creutzfeldt–Jacob disease in humans, bovine spongiform encephalopathy and scrapie in sheep [1]. In yeast, several polypeptides can form prions that behave as dominant non-Mendelian cytoplasmic genetic elements. The best-characterized yeast prionogenic proteins are Sup35 and Ure2, which, in their aggregated state, form two cytosolic inheritable elements named *[PSI+]* and *[URE3]*, respectively. Whether this property is detrimental and prion formation constitutes a pathological yeast trait or it is, in contrast, associated to beneficial phenotypes is controversial [2]. The fact that in wild-type yeast, the

[PSI+] or *[URE3]* prions were initially not found was interpreted in favour of the first possibility [3,4], but a recent study by the Lindquist's group demonstrates that various yeast prions can be found in several isolates of wild type yeast [5], favouring thus the second possibility. Regardless of their cellular effects, both mammalian and fungal prion proteins are characterized by a high propensity to assemble into amyloid-like aggregates under physiological conditions both *in vitro* and in the cell [6]. Prions represent a particular subclass of amyloids for which the aggregation process becomes self-perpetuating *in vivo* and therefore infectious [7]. *In vitro*, the assembly of prions into amyloid aggregates displays a characteristic lag phase, which is abrogated in the presence of preformed fibres [8–10]. This seeded catalysis of the polymerization reaction underlies prion conformational replication and infectivity [6]. Reconstitution of *in vivo* infectivity from *in vitro* aggregates formed by recombinant purified prions has definitively proven the protein only hypothesis for prion formation

* Correspondence: rsabate@ub.edu; salvador.ventura@uab.es

³Departament de Físicoquímica, Facultat de Farmàcia, Universitat de Barcelona, Avda. Joan XXIII s/n, E-08028, Barcelona, Spain

¹Institut de Biotecnologia i de Biomedicina, Universitat Autònoma de Barcelona, E-08193, Bellaterra, Spain

Full list of author information is available at the end of the article

and the connection between amyloid conformations and prion spreadable species [11,12]. Prion assemblies of the same protein might lead to phenotypically different transmissible states or strains [13]. It is suggested that this phenomenon results from a single protein being able to adopt multiple misfolded conformations, each one corresponding to a specific strain.

The formation of inclusion bodies (IBs) in bacteria has long been regarded as an unspecific process depending on the establishment of hydrophobic contacts between partially or totally unfolded species after protein synthesis at the ribosome [14]. However, an increasing body of evidence indicates that bacterial IBs share a number of common structural features with the highly ordered and, in many cases, pathogenic amyloid fibrils [15-18]. So far, the conformational and functional characteristics of the IBs formed by prions in bacteria have been only explored in detail for the HET-s prion of the filamentous fungus *Podospora anserina* [19,20]. The HET-s prion functions in a genetically programmed cell-death phenomenon, which occurs when two fungal strains of different genotypes fuse [21]. For this particular prionogenic protein, the formation of IBs and amyloid fibrils seems to be a remarkably similar process as IBs display a highly ordered amyloid-like conformation at the molecular level [19,20], are able to seed the polymerization of amyloid-fibrils *in vitro* [19,20] and turn to be infectious *in vivo* [20]. This suggests that the aggregates formed by other prionogenic proteins in bacteria might exhibit equal properties. We show here that this is the case for the yeast prion domain of Sup35 (Sup35-NM) and the Ure2 protein (Ure2p).

Results and discussion

Ure2p and Sup35-NM form β -sheet enriched IBs

We analyzed the cellular distribution of Ure2p and Sup35-NM proteins when expressed recombinantly in bacteria at 37°C. Western blotting and densitometry of the soluble and insoluble fractions indicate that about 50% of Ure2p and 40% of Sup35-NM recombinant proteins reside in the insoluble cellular fraction in these conditions (Figure 1A and C). Accordingly, bacterial cells expressing these polypeptides form birefringent IBs, located predominantly at the cell poles, as shown by phase contrast microscopy (Figure 1B and D).

The aggregation of proteins into amyloid fibrils results in the formation of intermolecular β -sheets [22,23]. Fourier-transform infrared (FT-IR) spectroscopy allows addressing structural features of protein aggregates [24,25]. Specifically, the amide I region corresponding to the absorption of the carbonyl peptide bond group of the protein main chain is a sensitive marker of the protein secondary structure. To decipher the secondary structure in Sup35-NM and Ure2p IBs, we purified them

from bacterial cell extracts and analyzed their FT-IR spectra (Figure 2A, B and C). Deconvolution of the absorbance spectrum in the amide I region for Sup35-NM and Ure2p IBs permitted to identify the individual secondary structure components and their relative contribution to the main absorbance signal. Both IBs exhibit FT-IR bands that can be assigned to the presence of intermolecular β -sheets (Table 1). These signals are absent or display a low intensity in the FT-IR of purified, initially soluble and monomeric, Sup35-NM and Ure2p species (Figure 2A and B). Therefore, as reported for other amyloid proteins [15,18,19,26], aggregation of Sup35-NM and Ure2p into IBs results in the formation of a supra-molecular structure in which at least part of the polypeptide chains adopt a disposition similar to this in amyloids. The IBs of the two yeast prionogenic proteins display, however, certain differences in secondary structure (Table 1 and Figure 2C); Ure2p IBs being slightly enriched in intermolecular β -sheet structure relative to Sup35-NM aggregates. The secondary structure content of Sup35-NM IBs closely resembles the one we observed for fibrils under agitation conditions [27]. In the case of Ure2p IBs, their secondary structure is more similar to that in fibrils formed under quiescent conditions [28]. In fact we have shown that, in contrast to Sup35-NM, the secondary structure content of Ure2p is strongly dependent on the aggregation conditions [27].

The presence of regular secondary structure inside IBs implies the existence of cooperative interactions involving the main and side chains of the polypeptides embedded in these aggregates. To confirm this extent, we used chemical denaturation with guanidine hydrochloride (Gdn-HCl). We have shown before that this approach allows to approximate the conformational stability of intracellular aggregates [29]. Ure2p and Sup35-NM IBs denaturation was measured by monitoring the changes in absorbance at 350 nm in a Gdn-HCl range from 0 to 8 M. We calculated $[Gdn-HCl]_{1/2}$ for IBs solubilization under equilibrium conditions (20 h incubation) to be 1.8 M and 2.1 M for Sup35-NM and Ure2p IBs, respectively (Figure 2D). These values are close to the one observed for HET-s PFD IBs (1.6 M) [19] and in agreement with their relative intermolecular β -sheet content. The cooperative denaturation transitions observed for both IBs support the presence of selective contacts in at least a fraction of the molecules deposited inside them.

Amyloid properties of Sup35-NM and Ure2p IBs

We used the amyloid-specific dyes Congo red (CR), thioflavin T (Th-T) and S (Th-S) to confirm that the detected β -sheet secondary structure in Sup35-NM and Ure2p IBs is organized into an amyloid-like suprastructure. The absorbance of CR increases and the spectrum maximum red-shifts to 510 nm in the presence of both

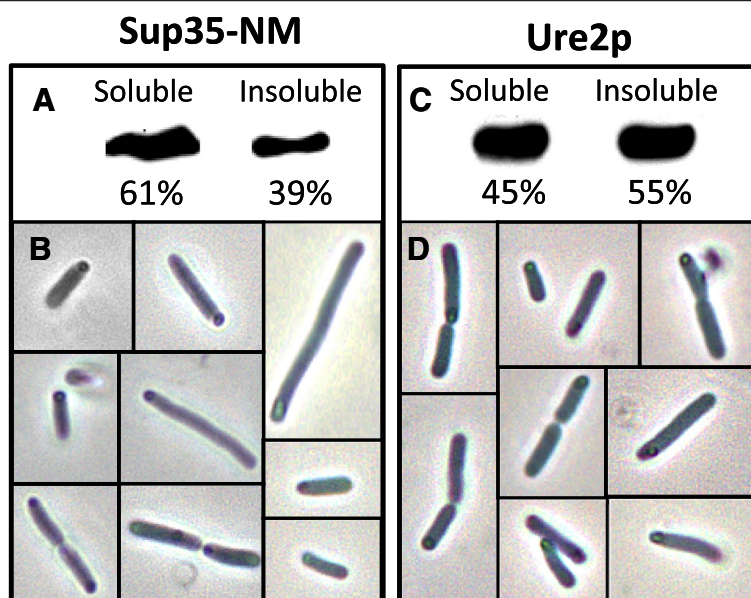


Figure 1 Solubility properties of recombinant Sup35-NM (left panel) and Ure2p (right panel) proteins. (A and C) Western blot of the soluble and insoluble fractions of cells expressing Sup35-NM and Ure2p at 37°C detected with an anti-histag antibody and quantified by densitometry using the Quantity-One software (Bio-Rad). (B and D) Localization of cytoplasmic IBs at the poles of cells expressing Sup35-NM and Ure2p proteins, as imaged by phase contrast microscopy.

IBs (Figure 3A). This spectral change corresponds to that observed in the presence of the fibrils formed *in vitro* by both proteins [27,30,31]. Moreover, the difference spectra of the dye in the presence and absence of IBs exhibit the characteristic amyloid band at 541 nm (Figure 3B).

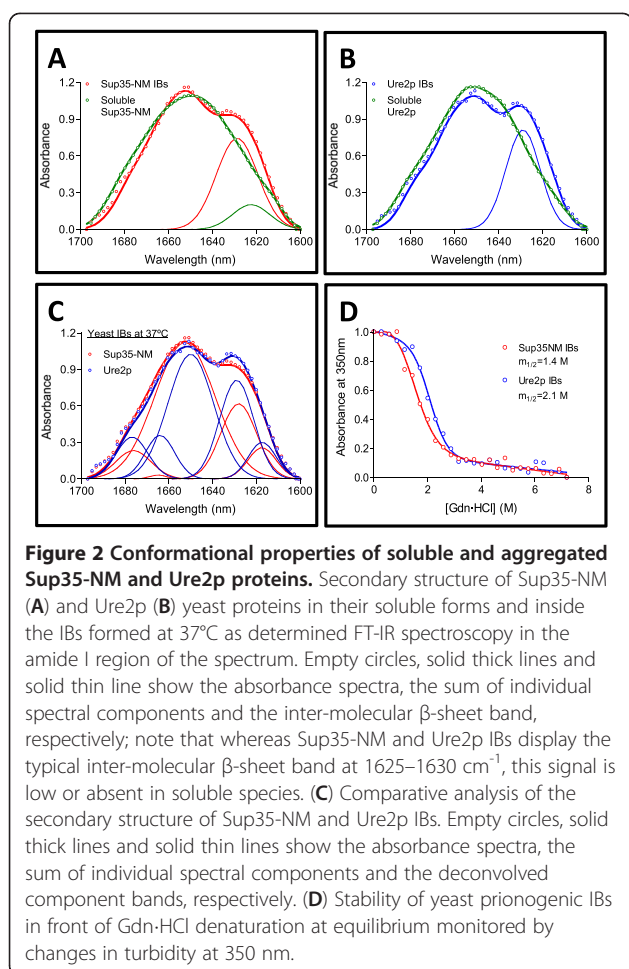
Th-T fluorescence emission is enhanced in the presence of yeast prion amyloid fibrils [27,30,31]. The same behaviour is observed upon incubation of Th-T with yeast proteins IBs (Figure 3C). The Th-T fluorescence at the 480 nm spectral maximum increases 20- and 40-folds for Sup35-NM and Ure2p IBs, respectively. Furthermore, binding of Th-S to IBs was visualized by fluorescence microscopy (Figure 3D). For both IBs, areas rich in fibrous material were stained with Th-S to yield a bright green–yellow fluorescence against a dark background. Therefore, consistently with the secondary structure data and the existence of selective interactions, the dye binding results indicate that both IBs possess detectable amounts of amyloid structure.

Sup35-NM and Ure2p IBs selectively seed amyloid formation

The kinetics of amyloid fibril formation usually results in a sigmoid curve that reflects a nucleation-dependent growth mechanism [29]. We have shown previously that the *in vitro* assembly of Sup35-NM and Ure2p fibrils follows this kinetic scheme [27]. The detected lag phase corresponds to the formation of the initial nuclei on

which the polymerization or fibril growth would further spontaneously proceed. Seeded protein polymerization is a well-established mechanism for *in vivo* amyloid fibril formation and underlies prion propagation [32-34]. In Figure 4, it is shown, the effect of the presence of preformed amyloid Sup35-NM and Ure2p fibrils on the kinetics of fibril formation. In the presence of a 10% of preformed fibrils, the apparent nucleation constant (k_n) increases by three- and five-fold for Sup35-NM and Ure2p, respectively (Table 2). As a result, the lag phase of the reaction is shortened by 22 min for Sup35-NM and by 62 min for Ure2p. As expected, no significant changes in the apparent elongation constants (k_e) were detected since fibril seeds act preferentially at the nucleation stage.

To test if the detected amyloid-like structures in Sup35-NM and Ure2p IBs were able to template the conformational conversion of their respective soluble species into amyloid fibrils, we performed aggregation experiments in the presence of preformed and purified IBs. The effect exerted by these aggregates on fibril formation kinetics is analogous to that promoted by the corresponding fibrillar states. Their presence do not affect k_e but increases k_n by three- and seven-fold for Sup35-NM and Ure2p reactions, respectively; shortening the respective lag phases in 26 min and 68 min (Figure 4). Interestingly enough, fibrils and IBs have quantitatively similar effects on the reaction constants for amyloid formation of yeast prionogenic proteins (Table 2).



In contrast to amorphous aggregation, amyloid formation is a specific process that can be seeded by homologous fibrils, but not by fibrils from unrelated polypeptides, even if they share a cross β -sheet conformation [35]. To test if this selectivity also applies in the case of IBs, we performed cross-seeding experiments, seeding the aggregation reaction of Sup35-NM with pre-formed Ure2p IBs and vice-versa. Importantly, the presence of heterologous prionogenic IBs does not affect the nucleation rates or lag times (Figure 4 and Table 2).

This confirms that, as for fibrils, a specific molecular recognition between the soluble species and aggregated polypeptides underlies IBs-promoted fibril seeding.

The morphology of the aggregates in seeded and non-seeded reactions was analyzed by transmission electronic microscopy (TEM) to make sure that the observed increase in aggregation rates results from a faster growth of amyloid material and not from a rapid formation of amorphous assemblies. As shown in Figure 5, regular fibrillar structures were observed in all cases. Interestingly, the morphology of the fibrils formed by seeding with fibrils and IBs of the same protein were similar. Overall, the data allow concluding that the selective intra- and inter-molecular contacts that characterize yeast prions fibrils are established as well by at least a fraction of the polypeptide chains embedded in the intracellular aggregates formed by these proteins in bacteria.

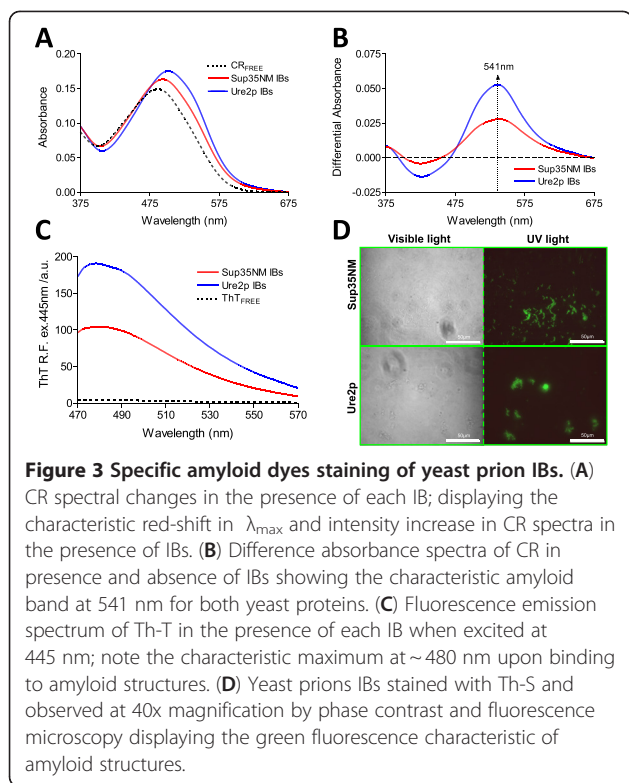
Sup35-NM IBs are infectious

The Sup35 protein is an eukaryotic release factor, which is required for translation termination in yeast [36,37]. In contrast to *[psi-]* cells, where the Sup35 protein is soluble and functional, *[PSI+]* cells exhibit a nonsense suppressor phenotype due to reduced translation termination efficiency as consequence of the sequestration of native Sup35 into insoluble amyloid structures [38,39]. Both the cellular content of yeast *[PSI+]* cells and the amyloid fibrils formed *in vitro* by purified and soluble Sup35-NM are infectious and suffice to promote the transformation of the *[psi-]* phenotype into the *[PSI+]* if they enter the cell [40].

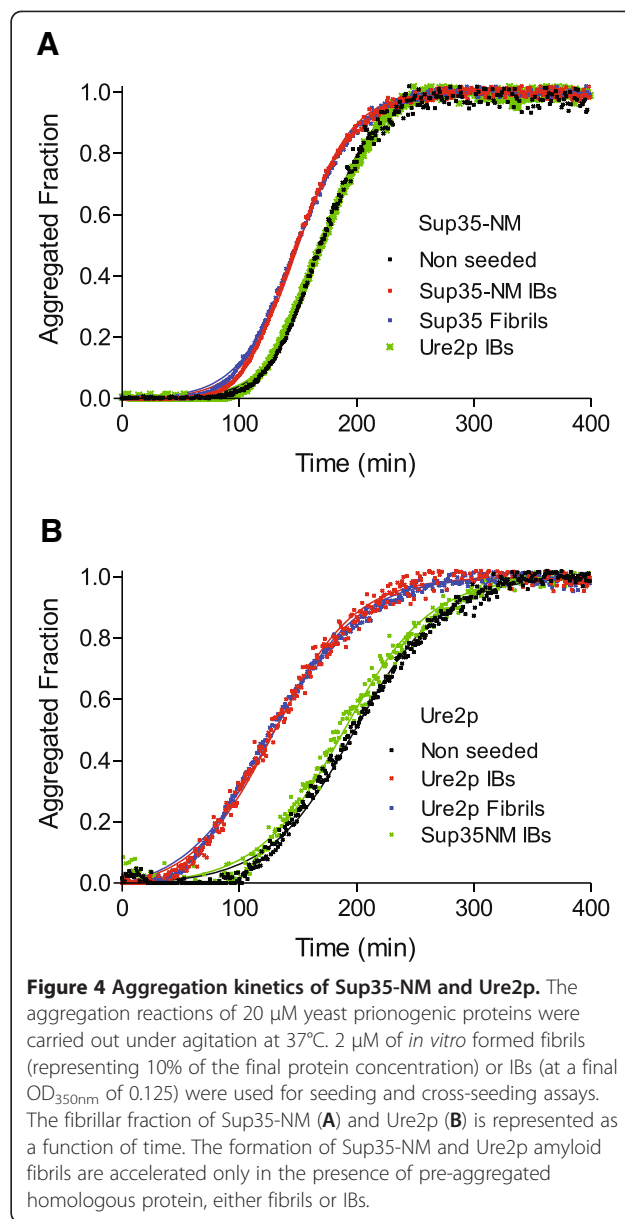
The biophysical characterization of Sup35-NM and Ure2p aggregates suggests that these proteins might get access to prion conformations when expressed recombinantly in bacteria. As described above, in the case of Sup35-NM this property can be assessed by monitoring the conversion of *[psi-]* yeast cells into *[PSI+]* ones. To test this possibility, we fractionated bacterial cells expressing Sup35-NM. The resulting soluble and insoluble fractions were used to transform spheroplasts of a *[psi-]* yeast strain as described in the Methods section.

Table 1 Secondary structure bands in the absorbance FT-IR spectra of purified *E. coli* Sup35-NM and Ure2p IBs

18°C		37°C				Structure
Sup35-NM IBs		Sup35-NM IBs		Ure2p IBs		
Band (cm^{-1})	Area (%)	Band (cm^{-1})	Area (%)	Band (cm^{-1})	Area (%)	
1615	4	1617	7	1617	8	Tyrosine ring
1629	29	1628	21	1629	26	β -sheet (inter-molecular)
1652	51	1653	65	1650	45	
1665	2	1676	6	1664	10	loop/ β -turn/bend/ α -helix
1677	12	1682	1	1677	11	



Bacterial cells expressing an insoluble variant of the spectrin SH3 domain (MAXF-SH3) [41] were processed in the same manner as a control, to make sure that phenotypic conversion is not caused by endogenous bacterial material or by the presence of a generic aggregation-prone protein in the transformation solution. A pESC-URA3 plasmid that allows selecting for the reduced fraction of transformed cells by uracil auxotrophy was added to each of the fractions. Upon spheroplast transformation, yeast cells were grown in uracil-deprived plates. Subsequently, they were streaked in 1/4 YPD plates. On these plates, *[psi-]* cells are of an intense red color whereas *[PSI+]* cells appear white or pink, depending if they convert to strong or weak *[PSI+]* strains, respectively [42]. No *[PSI+]* colonies were observed for transformations with any of the fractions of MAXF-SH3 expressing cells. In contrast, transformation with the soluble and insoluble fractions of Sup35-NM expressing bacteria resulted in a 1.7% and 3.5% of *[PSI+]* colonies, respectively (Figure 6 and Additional file 1: Table S1). These results are reminiscent of those recently reported by Hochschild and co-workers using a fusion of a Sup35-NM^{R2E2} variant, containing extra copies of the critical oligopeptide repeat region and displaying an increased propensity to convert spontaneously into the prion form in yeast [43], to GFP. They convincingly demonstrated the formation of prionic variants of this protein fusion in bacteria [44]. In our study, we confirmed



this behaviour using the wild type Sup35-NM domain without any mutation or fusion that might modify its intrinsic aggregation or conversion propensity [45].

An important difference between the results in both studies is that in the case of the Sup35-NM^{R2E2}-GFP fusion, the co-expression of the yeast New1 prionogenic protein in bacteria appeared as a requirement for prion formation. In contrast, our data argue that the natural bacterial protein machinery suffices to support the formation of prionic conformations, without a requirement for exogenous factors. This apparent discrepancy in the genetic background required for prion formation in bacteria might arise, among other reasons, from the fact that, in our hands, the Hochschild fractionation protocol

Table 2 Kinetic parameters of Sup35-NM and Ure2p aggregation reactions

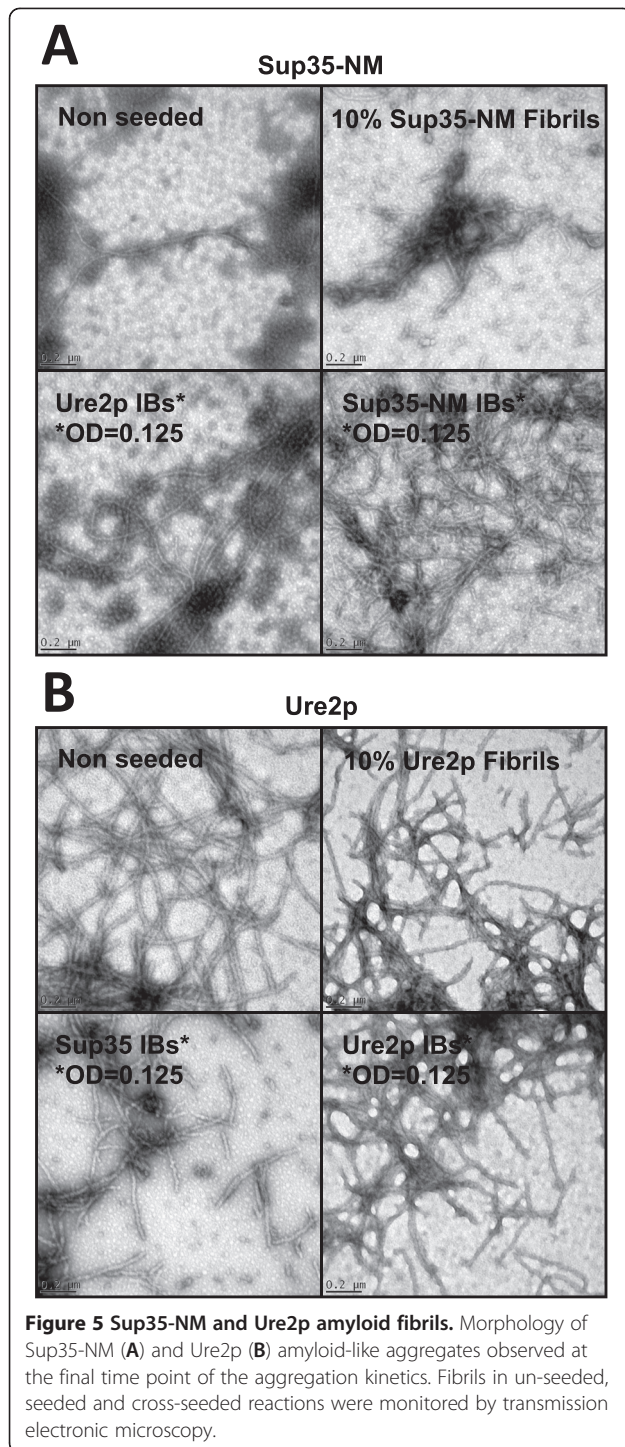
Protein	Parameters	Non seeded	Sup35-NM Fibrils	Sup35-Nm IBs	Ure2p IBs
Sup35-NM	$k_n / 10^6 \cdot s^{-1}$	0.35	1.07	1.00	0.45
	$k_e / M^{-1} \cdot s^{-1}$	37.54	36.08	36.67	36.07
	$c \cdot k_e / 10^6 \cdot s^{-1}$	750.83	721.50	733.33	721.33
	t_0 / s	124.0	102.5	98.6	123.0
	$t_{1/2} / s$	169.9	150.1	149.6	171.0
	t_1 / s	215.8	197.8	200.7	219.1
Protein	Parameters	Non seeded	Ure2p Fibrils	Ure2p IBs	Sup35-IBs
Ure2p	$k_n / 10^6 \cdot s^{-1}$	2.13	11.46	14.24	2.62
	$k_e / M^{-1} \cdot s^{-1}$	22.33	23.40	21.49	22.53
	$c \cdot k_e / 10^6 \cdot s^{-1}$	446.67	468.00	429.83	450.50
	t_0 / s	122.9	60.8	54.9	114.5
	$t_{1/2} / s$	199.9	131.2	129.5	190.3
	t_1 / s	276.8	201.6	204.2	266.0

causes precipitation and loss of most IBs. We thought that, according to their amyloid-like properties, the polypeptides embedded in these aggregates might contribute significantly to infectivity. To confirm this point, we purified Sup35-NM IBs from the insoluble fraction of cells cultured at 37°C and transformed them in *[psi-]* yeast spheroplasts. *[PSI+]* strain conversion occurred at a frequency of 5.6%. 65% of the transformed cells exhibited a weak pink *[PSI+]* phenotype and the rest were white (Figure 6 and Additional file 1: Table S1). Both Sup35-NM IBs induced weak and strong *[PSI+]* phenotypes could be cured when the transformed yeast cells were transiently grown on a medium containing guanidine hydrochloride (Figure 7). Moreover, when cellular extracts of *[PSI+]* yeast cells resulting from IBs transformation were used to transform *[psi-]* spheroplasts, 40% of the resulting colonies converted to *[PSI+]*. These two features are characteristic of *[PSI+]* strains and support an infective prion nature for at least a fraction of the protein embedded in Sup35-NM IBs. Overall, independently of methodological differences, the data in the two studies converge to demonstrate that the bacterial cytosol supports the formation of infective amyloid-like structures.

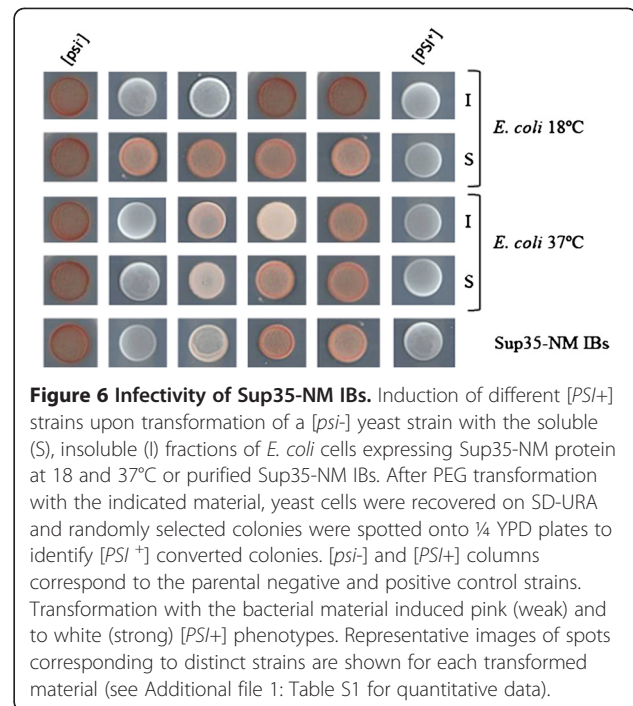
Temperature dependence of the infectious properties of Sup35-NM aggregates

It is postulated that the existence of distinct amyloid conformations of Sup35-NM accounts for the different *[PSI+]* phenotypes that this prionogenic protein induces in yeast [40,46,47]. *In vitro*, the temperature at which the aggregation of prionogenic proteins occurs might influence the conformational properties of the resulting fibrils [27]. Accordingly, Weissman and co-workers demonstrated that Sup35-NM fibrils formed *in vitro* at different

temperatures rendered different *[PSI+]* phenotypes when transformed into *[psi-]* cells. Fibrils formed at 4°C resulted in a majority of *[PSI+]* cells displaying a strong (white) phenotype whereas fibrils formed at 37°C rendered mostly weak (pink) strains [40]. This result is in agreement with our observation that most of the *[PSI+]* yeast strains obtained after transformation with the content of bacterial cells expressing Sup35-NM at 37°C displayed a weak phenotype. We wondered if, by analogy to fibrils, cultivation of Sup35-NM expressing cells at lower temperature would result in a significant increase of transformed cells displaying a strong phenotype. To this aim, Sup35-NM was expressed in bacterial cells grown at 18°C. First, we addressed if production at lower temperature modifies the distribution of recombinant Sup35-NM between the soluble and insoluble fractions. As it can be seen in Figure 8A, at 18°C the fraction of Sup35-NM protein residing in the insoluble fraction is reduced by about five-fold relative to that observed at 37°C, representing 8% of the total recombinant protein. This solubilizing effect of reduced temperature is well-documented for the expression of different model proteins [48]. Still, when the cellular fractions of these bacterial cells were used to transform *[psi-]* spheroplasts, the conversion efficiency into *[PSI+]* phenotypes was about five-fold higher for the insoluble fraction than for the soluble one (Figure 6 and Additional file 1: Table S1), arguing that Sup35-NM aggregates are enriched in prion conformations relative to the corresponding soluble species. Interestingly enough, the reduction in the production temperature results in a significant increase in the proportion of white colonies (44%) among *[PSI+]* cells (Figure 6 and Additional file 1: Table S1), relative to those observed at 37°C (25%). These data suggest that, in principle, one can modulate the infective



properties of prionogenic proteins produced in bacteria by tuning the production conditions. In an effort to decipher the conformational determinants of the differential infective properties of 37 and 18°C insoluble fractions, we purified IBs from the low temperature insoluble fraction, analyzed their FT-IR in the amide I region of the spectra and compared it with the one of IBs obtained at 37°C



(Figure 8B). The shapes of both spectra were fairly similar. This is in agreement with previous data in which we show that changes in the temperature of aggregation of Sup35-NM fibrils do not induce dramatic changes in their secondary structure content, as assessed by FT-IR [27]. Nevertheless, certain differences in the contribution of the spectral components to the main spectra could be detected. In particular, the ratio between the contribution of the band at 1628–1629 cm^{-1} and that at 1652–1653 cm^{-1} is higher in the IBs formed at 18°C (0.56) than in the IBs formed at 37°C (0.32), indicating a relative enrichment in intermolecular β -sheet in the 18°C aggregates [49] (Table 1). However, it is important to note that, despite the differences detected in IBs secondary structure content might contribute to the observed phenotypic differences between insoluble fractions, they might also be caused by more subtle conformational features to which FT-IR is blind, as shown for Sup35-NM amyloid fibrils [13].

Conclusions

Prions are misfolded, self-propagating, infectious proteins. The bacterial IBs formed by HET-s PFD have been shown to display an amyloid fold and to be infective [19,20]. We show here that the IBs formed by the yeast Ure2p and Sup35-NM prionogenic proteins have an amyloid nature, while confirming the previous observation that bacteria supports the formation of Sup35-NM prion conformations. Moreover, we prove that a major fraction of the recombinant infective species is embedded in IBs. The formation of infectious prion folds in

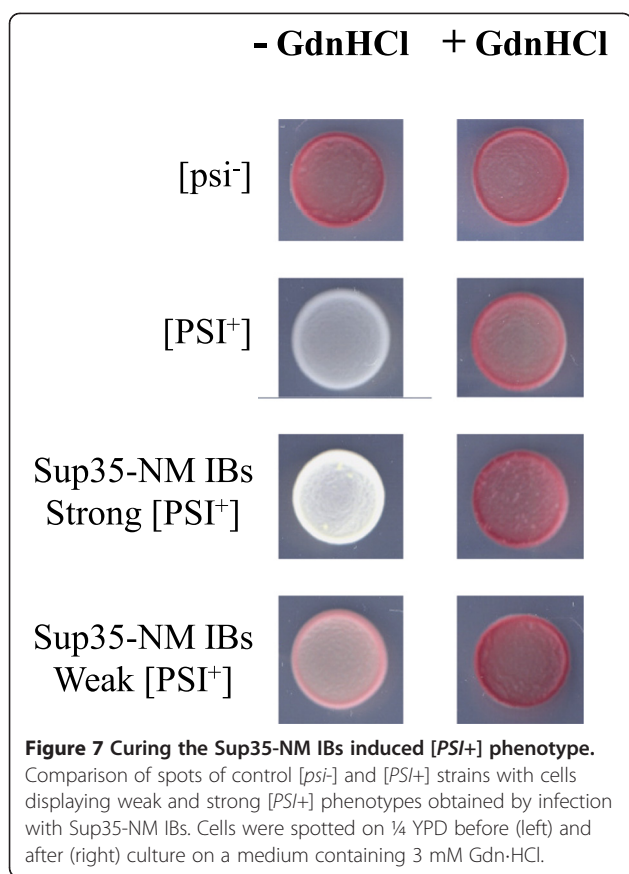


Figure 7 Curing the Sup35-NM IBs induced [PSI+] phenotype.
 Comparison of spots of control [*psi*⁻] and [*PSI*⁺] strains with cells displaying weak and strong [*PSI*⁺] phenotypes obtained by infection with Sup35-NM IBs. Cells were spotted on ¼ YPD before (left) and after (right) culture on a medium containing 3 mM Gdn-HCl.

bacteria can be modulated by the expression conditions, as illustrated here using different growth temperatures. Since proteins accumulate in IBs at high levels and these biological particles are easily purified, it is suggested that they might become a convenient source to obtain prion particles exhibiting strain diversity. Besides, prion producing bacterial cells can potentially be used to develop screens for anti-prion drugs; an approach already validated in yeast models [50,51].

Methods

Protein expression and purification

Plasmids encoding Sup35-NM residues 1 to 254 (NM) C-terminally tagged with 7x-histidine and Ure2p N-terminally tagged with 6x-histidine have been described previously [13,52,53]. The histidine tag does not affect the biological activity of Sup35-NM and Ure2p in *Saccharomyces cerevisiae* [13,54]. The plasmids were transformed into BL21(DE3) pLysS *E. coli* cells. For protein expression, 10 mL overnight culture of transformed cells was used to inoculate 2 L of DYT medium, which was further incubated at 37°C and 250 rpm. At an OD_{600nm} of 0.5, protein expression was induced with 1 mM of isopropyl-1-thio-β-D-galactopyranoside (IPTG) at 37°C for 3 h and 14 h for soluble

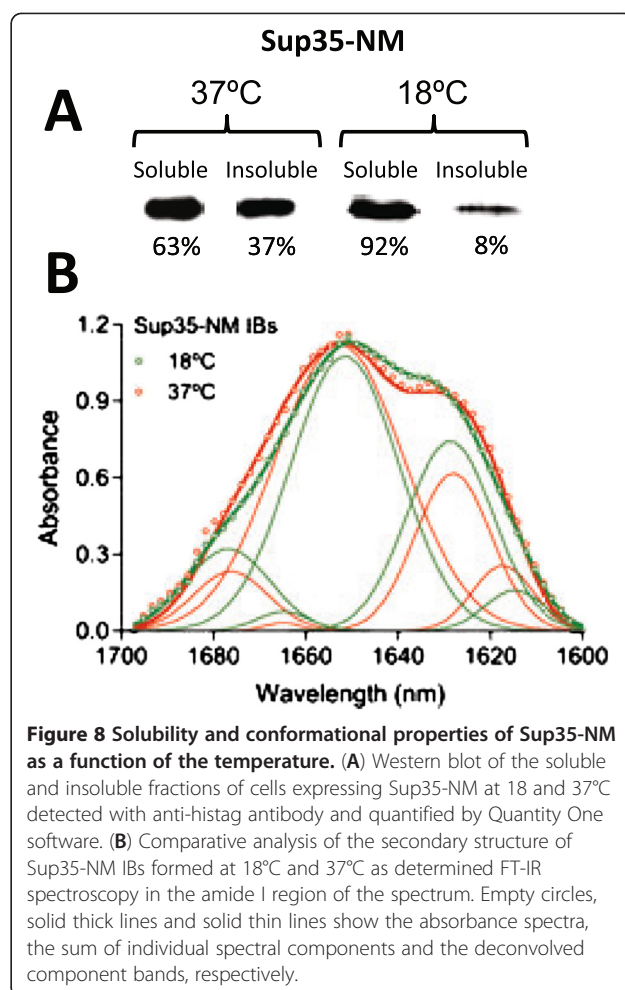


Figure 8 Solubility and conformational properties of Sup35-NM as a function of the temperature. (A) Western blot of the soluble and insoluble fractions of cells expressing Sup35-NM at 18 and 37°C detected with anti-histag antibody and quantified by Quantity One software. (B) Comparative analysis of the secondary structure of Sup35-NM IBs formed at 18°C and 37°C as determined FT-IR spectroscopy in the amide I region of the spectrum. Empty circles, solid thick lines and solid thin lines show the absorbance spectra, the sum of individual spectral components and the deconvoluted component bands, respectively.

protein and IBs purification, respectively. The cultures were centrifuged at 8 000 xg for 10 min, then resuspended in 20 mL of deionized water, centrifuged at 15 000 xg for 10 minutes and the cell pellet was frozen at -80°C. For expression experiments at low temperature, cells were initially grown at 37°C until an OD_{600nm} of 0.4, transferred to 18°C for 20 min, induced with 1 mM IPTG and incubated for 14 h.

Ure2p and Sup35-NM proteins were purified from the soluble and insoluble cell fractions, respectively, essentially as previously described [27]. For lysis, cells were resuspended in 5 mL of deionized water and 45 mL of non-denaturing washing buffer (20 mM Tris-HCl at pH 8.0, 0.5 M NaCl) was further added. The cell suspension was placed under gentle agitation for 15 min. Finally, the samples were sonicated with a Branson Sonifier[®] ultrasonic cell disruptor for 3 min on ice. Soluble and insoluble fractions were separated after cell lysis by centrifugation at 15 000 xg for 30 minutes. When required, the insoluble fraction was resuspended in denaturing washing buffer. Affinity chromatography on FF-Histrap resin (Amersham, Uppsala, Sweden) under

denaturing (20 mM Tris-HCl at pH 8.0, 0.5 M NaCl, 6 M Gdn-HCl, and 20 mM or 500 mM imidazole for washing and elution buffer, respectively) and non-denaturing conditions (20 mM Tris-HCl at pH 8.0, 0.5 M NaCl, and 20 mM or 500 mM imidazole for washing and elution buffer, respectively) was used for Sup35-NM and Ure2p purification, respectively. Buffer was exchanged by gel filtration on Sephadex G-25 column (Amersham, Uppsala, Sweden) for native buffer (50 mM Tris-HCl and 150 mM NaCl at pH 7.4).

Sup35-NM and Ure2p IBs purification

IBs were purified from induced cell extracts by detergent-based procedures as previously described [16]. Briefly, cells in a 10 mL culture were harvested by centrifugation at 12 000 xg (at 4°C) for 15 min and resuspended in 200 μ L of lysis buffer (50 mM Tris-HCl pH 8.0, 1 mM EDTA, 100 mM NaCl), plus 30 μ L of 100 mM protease inhibitor PMSF and 6 μ L of a 10 mg/mL lysozyme solution. After 30 min of incubation at 37°C under gentle agitation, NP-40 was added at 1% (v/v) and the mixture was incubated at 4°C for 30 min. Then, 3 μ L of DNase I and RNase from a 1 mg/mL stock (25 μ g/mL final concentration) and 3 μ L of 1 M $MgSO_4$ were added and the resulting mixture was further incubated at 37°C for 30 min. Protein aggregates were separated by centrifugation at 12 000 xg for 15 min at 4°C. Finally, IBs were washed once with the same buffer containing 0.5% Triton X-100 and once with sterile native buffer. After a final centrifugation at 12 000 xg for 15 min, pellets were stored at -20°C until analysis. The frozen pellets were reconstituted in native buffer. SDS-PAGE analysis revealed that in all cases the yeast proteins were the major polypeptidic components of the aggregates.

Fibril formation: Aggregation kinetics and seeding assays

For aggregation reactions, 20 μ M of soluble Sup35-NM and Ure2p in native buffer were placed under agitation (~750 rpm with micro-stir bars) at 25°C. Conversion of soluble species to aggregates was monitored by quantification of the relative Th-T fluorescence at 480 nm when exciting at 445 nm. In the seeding assay, a solution of yeast prion IBs (to a final $OD_{350nm} = 0.125$) or 2 μ M of preformed fibrils was also added at the beginning of the reaction. Cross-seeding assays were performed in the same manner. Yeast prions aggregation process, as other related amyloid processes, may be modeled as an autocatalytic reaction using the equation $f = (\rho \{ \exp[(1 + \rho)kt] - 1 \}) / \{ 1 + \rho \exp[(1 + \rho)kt] \}$ under the boundary condition of $t = 0$ and $f = 0$, where $k = k_{ca}$ (when a is the protein concentration) and ρ represents the dimensionless value to describe the ratio of k_n to k . By non-linear regression of f against t , values of ρ and k can be easily obtained,

and from them the rate constants, k_e (elongation constant) and k_n (nucleation constant). The extrapolation of the growth portion of the sigmoid curve to abscissa ($f = 0$), and to the highest ordinate value of the fitted plot, afforded two values of time (t_0 and t_1), which correspond to the lag time and to the time at which the aggregation was almost complete [9,27,55].

Western blots

For Western blotting, bacterial cells were resuspended in lysis buffer and sonicated with a Branson Sonifier® ultrasonic cell disruptor for 3 min on ice. The cellular extract was centrifuged at 12 000 xg for 30 min. The soluble fraction was separated and pellet was resuspended exactly in the same volume of lysis buffer. To 50 μ L of the soluble and resuspended insoluble fractions it was added 25 μ L of loading buffer (180 mM Tris-HCl pH 7, 30% glycerol, 0.05% bromophenol blue, 9% sodium dodecyl sulfate (SDS) and 15% β -mercaptoethanol) and the mixture was heated at 95°C for 10 minutes. Insoluble and soluble fractions were resolved on 15% SDS-PAGE gels, transferred on to PVDF membranes, and recombinant proteins detected with a polyclonal anti-histag antibody. The membranes were developed with the ECL method [56]. The proportion of proteins in each fraction was determined using Quantity-One analysis software (Bio-Rad, Hercules, CA, USA).

Spheroplast preparation for transformation

Yeast cells culture

Yeast strains L1749 (*MAT α ade1-14 ura3-52 leu2-3,112 trp1-289 his3-200, [psi-], [PIN+]*) and L1762 (*MAT α adel-14 ura3-52 leu2-3,112 trp1-289 his3-200, Strong [PSI+], [PIN+]*) were kindly provided by Susan Liebman. Yeast strains were grown in solid YEPD medium for 48 h at 30°C; then a colony was inoculated in 10 mL liquid YEPD medium and incubated overnight at 30°C and agitation of 250 rpm. 5 mL of this culture were used to inoculate 50 mL of liquid YEPD at 30°C and 250 rpm. When an $OD_{600nm} = 0.5$ was reached, the culture was centrifuged at 1 500 xg and room temperature for 10 min. Cells were successively washed with 20 mL of sterile water and 1 M sorbitol, and centrifuged at 1 500 xg and room temperature for 5 min. Yeast cells were resuspended in SCE buffer (1 M sorbitol, 10 mM EDTA, 10 mM DTT, 100 mM sodium citrate at pH 5.8) and divided in 2 tubes.

Lyticase preparation

Lyticase from *Arthrobacter luteus* obtained as lyophilized powder, ≥ 200 units/mg solid (L4025: Sigma) was prepared at a final concentration of 10 000 units·mL⁻¹ in phosphate buffer at pH 7.4 with 50% glycerol and kept at -80°C.

Spheroplast preparation

The first yeast cell tube was used to calculate the optimal spheroplast lyticase digestion time, according to the provider instructions. The second one was incubated with 10 μ L of lyticase at 30°C until 85-90% of spheroplasts were reached. The spheroplasts solution was then centrifuged at 750 xg and room temperature for 10 min. The spheroplasts were gently resuspended and washed successively with 10 mL of 1 M sorbitol and STC buffer (1 M sorbitol, 10 mM $CaCl_2$ and 10 mM Tris-HCl, pH 7.4), and centrifuged at 750 xg and room temperature for 10 min. Finally, the spheroplasts were gently resuspended in 100 μ L of STC and immediately used.

Spheroplast transformation

25 μ L of pelleted spheroplasts resuspended in STC buffer were mixed with 3 μ L of sonicated soluble, insoluble fractions or IBs of Sup35-NM, URA3-marked plasmid (pRS316) (20 μ g/mL) and salmon sperm DNA (100 μ g/mL). Fusion was induced by addition of 9 volumes of PEG buffer (20% (w/v) PEG 8000, 10 mM $CaCl_2$, 10 mM Tris-HCl at pH 7.5) for 30 min. Cells were centrifuged at 750 xg and room temperature for 10 min, and resuspended in SOS buffer (1 M sorbitol, 7 mM $CaCl_2$, 0.25% yeast extract, 0.5% bacto-peptone), incubated at 30°C for 30 min and plated on synthetic medium lacking uracil overlaid with top agar (2.5% agar).

Analysis of prion phenotypes

After growth on synthetic medium lacking uracil (for >5 days), the efficiency of conversion from [*psi*-] to [*PSI*+] was tested by the following colour assay. Transformants were randomly selected and streaked onto $\frac{1}{4}$ YPD plates to enhance the colour phenotype. After 3 days the streaked colonies were classified as strong [*PSI*+] (white), weak [*PSI*+] (pink) and [*psi*-] (red) strains. The obtained conversion percentages result from the analysis of >500 colonies for each transformation assay.

Conversion from [*PSI*+] to [*psi*-] strains

Yeast strains with different phenotypes were grown in YEPD medium containing 3 mM of Gdn-HCl for 48 h at 30°C to cure the [*PSI*+] phenotype. The conversion from [*PSI*+] to [*psi*-] phenotype was assessed by spotting cells onto $\frac{1}{4}$ YPD plates.

Secondary structure determination

ATR FT-IR spectroscopy analyses of Sup35-NM and Ure2p IBs were performed using a Bruker Tensor 27 FT-IR Spectrometer (Bruker Optics Inc) with a Golden Gate MKII ATR accessory. Each spectrum consists of 16 independent scans, measured at a spectral resolution of 1 cm^{-1} within the 1700–1500 cm^{-1} range. All spectral data were acquired and normalized using the OPUS

MIR Tensor 27 software. FT-IR spectra were fitted to five overlapping Gaussian curves and the amplitude, centre, and bandwidth at half of the maximum amplitude and area of each Gaussian function were calculated using a nonlinear peak fitting program (PeakFit package, Systat Software, San Jose, CA).

Chemical denaturation

For stability assays, purified IBs were prepared at $OD_{350nm} = 1$ in native buffer containing selected concentrations of guanidine hydrochloride (Gdn-HCl) ranging from 0 to 8 M. The reactions were allowed to reach equilibrium by incubating them for 20 h at room temperature. The fraction of soluble protein (f_s) was calculated from the fitted values using equation: $f_s = 1 - ((y_s - y) / (y_s - y_A))$, where y_s and y_A are the absorbance at 350 nm of the soluble and aggregated protein, respectively, and y is the absorbance of the protein solution as a function of the denaturant concentration.

The value $m_{1/2}$ was calculated as the denaturant concentration at which $f_s = 1/2$. OD_{350nm} changes were monitored with a Cary400 Varian spectrophotometer.

Binding of amyloid dyes to Sup35-NM and Ure2p IBs and amyloid fibrils

The interaction of 10 μ M of Congo-Red (CR) with Sup35-NM and Ure2p IBs and fibrils was tested using a Cary100 UV/Vis spectrophotometer (Varian, Palo Alto, CA, USA) by recording the absorbance spectra from 375 nm to 675 nm using a matched pair of quartz cuvettes of 1 cm optical length placed in a thermostated cell holder at 25°C. In order to detect the typical amyloid band at ~541 nm, differential CR spectra in the presence and absence of protein were used.

The binding of 25 μ M of Thioflavin-T (Th-T) to Sup35-NM and Ure2p was recorded using a Cary Eclipse spectrofluorometer (Varian, Palo Alto, CA, USA) with an excitation wavelength of 445 nm and emission range from 470 nm to 570 nm at 25°C in native buffer. For the staining assays with Thioflavin-S (Th-S), Sup35-NM and Ure2p IBs were incubated for 1 h in the presence of 125 μ M of dye. After centrifugation (14 000 xg for 5 min), the precipitated fraction was placed on a microscope slide and sealed. Images of Sup35-NM and Ure2p IBs and fibrils bound to Th-S were obtained at 40-fold magnification under UV light or using phase contrast in a Leica fluorescence microscope (Leica DMRB, Heidelberg, Germany).

Transmission electronic microscopy

Fibrils containing solutions were placed on carbon-coated copper grids, and left to stand for 5 min. The grids were washed with distilled water and stained with 2% (w/v) uranyl acetate for another two minutes before

analysis using a HitachiH-7000 transmission electron microscope (Hitachi, Tokyo, Japan) operating at accelerating voltage of 75 kV.

Additional file

Additional file 1: Table S1. Apparition frequencies of weak and strong [PSI⁺] phenotypes in the transformation of [psi⁻] yeast strain with the soluble, insoluble fractions of *E. coli* cells expressing Sup35-NM protein at 18°C and 37°C or purified Sup35-NM IBs.

Competing interests

The authors declare that they have no competing interests.

Authors' contributions

SV and RS supervised the project, designed the study and drafted the manuscript. AE carried out most of the experiments. AVP participated in the experimental work. All authors read and approved the final manuscript.

Acknowledgements

This work was supported by grants BFU2010-14901 from Ministerio de Ciencia e Innovación (Spain) and 2009-SGR 760 from AGAUR (Generalitat de Catalunya). RS is beneficiary of a contract from the Ramón y Cajal Programme from Ministerio de Ciencia e Innovación. SV has been granted an ICREA ACADEMIA award (ICREA).

Author details

¹Institut de Biotecnologia i de Biomedicina, Universitat Autònoma de Barcelona, E-08193, Bellaterra, Spain. ²Departament de Bioquímica i Biologia Molecular, Facultat de Ciències, Universitat Autònoma de Barcelona, E-08193, Bellaterra, Spain. ³Departament de Físicoquímica, Facultat de Farmàcia, Universitat de Barcelona, Avda. Joan XXIII s/n, E-08028, Barcelona, Spain. ⁴Institut de Nanociència i Nanotecnologia (IN2UB), Barcelona, Spain.

Received: 5 February 2012 Accepted: 27 May 2012

Published: 25 June 2012

References

1. Aguzzi A, Weissmann C: Prion diseases. *Haemophilia* 1998, **4**(4):619–627.
2. Wickner RB, Edskes HK, Shewmaker F, Nakayashiki T: Prions of fungi: inherited structures and biological roles. *Nat Rev Microbiol* 2007, **5**(8): 611–618.
3. McGlinchey RP, Kryndushkin D, Wickner RB: Suicidal [PSI⁺] is a lethal yeast prion. *Proc Natl Acad Sci U S A* 2011, **108**(13):5337–5341.
4. Wickner RB, Edskes HK, Bateman D, Kelly AC, Gorkovskiy A: The yeast prions [PSI⁺] and [URE3] are molecular degenerative diseases. *Prion* 2011, **5**(4).
5. Halfmann R, Jarosz DF, Jones SK, Chang A, Lancaster AK, Lindquist S: Prions are a common mechanism for phenotypic inheritance in wild yeasts. *Nature* 2012, **482**(7385):363–368.
6. Shorter J, Lindquist S: Prions as adaptive conduits of memory and inheritance. *Nat Rev Genet* 2005, **6**(6):435–450.
7. Prusiner SB, Scott MR, DeArmond SJ, Cohen FE: Prion protein biology. *Cell* 1998, **93**:337–348.
8. Baskakov IV, Legname G, Baldwin MA, Prusiner SB, Cohen FE: Pathway complexity of prion protein assembly into amyloid. *J Biol Chem* 2002, **277** (24):21140–21148.
9. Sabate R, Castillo V, Espargaró A, Saupe SJ, Ventura S: Energy barriers for HET-s prion forming domain amyloid formation. *FEBS J* 2009, **276** (18):5053–5064.
10. Patino MM, Liu JJ, Glover JR, Lindquist S: Support for the prion hypothesis for inheritance of a phenotypic trait in yeast. *Science* 1996, **273**(5275): 622–626.
11. Legname G, Baskakov IV, Nguyen HO, Riesner D, Cohen FE, DeArmond SJ, Prusiner SB: Synthetic mammalian prions. *Science* 2004, **305**(5684):673–676.
12. Castilla J, Saa P, Hetz C, Soto C: In vitro generation of infectious scrapie prions. *Cell* 2005, **121**(2):195–206.
13. Tanaka M, Chien P, Naber N, Cooke R, Weissman JS: Conformational variations in an infectious protein determine prion strain differences. *Nature* 2004, **428**(6980):323–328.
14. Sabate R, de Groot NS, Ventura S: Protein folding and aggregation in bacteria. *Cell Mol Life Sci* 2010, **67**(16):2695–2715.
15. de Groot NS, Sabate R, Ventura S: Amyloids in bacterial inclusion bodies. *Trends Biochem Sci* 2009, **34**(8):408–416.
16. Morell M, Bravo R, Espargaró A, Sisquella X, Aviles FX, Fernandez-Busquets X, Ventura S: Inclusion bodies: specificity in their aggregation process and amyloid-like structure. *Biochim Biophys Acta* 2008, **1783**(10):1815–1825.
17. Carrió M, Gonzalez-Montalban N, Vera A, Villaverde A, Ventura S: Amyloid-like properties of bacterial inclusion bodies. *J Mol Biol* 2005, **347**: 1025–1037.
18. Wang L, Maji SK, Sawaya MR, Eisenberg D, Riek R: Bacterial inclusion bodies contain amyloid-like structure. *PLoS Biol* 2008, **6**(8):e195.
19. Sabate R, Espargaró A, Saupe SJ, Ventura S: Characterization of the amyloid bacterial inclusion bodies of the HET-s fungal prion. *Microb Cell Fact* 2009, **8**:56.
20. Wasmer C, Benkemoun L, Sabate R, Steinmetz MO, Couлары-Salin B, Wang L, Riek R, Saupe SJ, Meier BH: Solid-state NMR spectroscopy reveals that *E. coli* inclusion bodies of HET-s(218–289) are amyloids. *Angew Chem Int Ed Engl* 2009, **48**(26):4858–4860.
21. Ritter C, Maddelein ML, Siemer AB, Luhrs T, Ernst M, Meier BH, Saupe SJ, Riek R: Correlation of structural elements and infectivity of the HET-s prion. *Nature* 2005, **435**(7043):844–848.
22. Nelson R, Sawaya MR, Balbirnie M, Madsen AO, Riekel C, Grothe R, Eisenberg D: Structure of the cross-beta spine of amyloid-like fibrils. *Nature* 2005, **435**(7043):773–778.
23. Fernandez-Busquets X, de Groot NS, Fernandez D, Ventura S: Recent structural and computational insights into conformational diseases. *Curr Med Chem* 2008, **15**(13):1336–1349.
24. Fink AL: Protein aggregation: folding aggregates, inclusion bodies and amyloid. *Fold Des* 1998, **3**:R9–23.
25. Ami D, Natalello A, Taylor G, Tonon G, Maria Doglia S: Structural analysis of protein inclusion bodies by Fourier transform infrared microspectroscopy. *Biochim Biophys Acta* 2006, **1764**(4):793–799.
26. Dasari M, Espargaró A, Sabate R, Lopez Del Amo JM, Fink U, Grelle G, Bieschke J, Ventura S, Reif B: Bacterial Inclusion Bodies of Alzheimer's Disease beta-Amyloid Peptides Can Be Employed To Study Native-Like Aggregation Intermediate States. *ChemBioChem* 2011, **12**(3):407–423.
27. Sabate R, Villar-Pique A, Espargaró A, Ventura S: Temperature dependence of the aggregation kinetics of Sup35 and Ure2p yeast prions. *Biomacromolecules* 2012, **13**(2):474–483.
28. Bousset L, Briki F, Doucet J, Melki R: The native-like conformation of Ure2p in fibrils assembled under physiologically relevant conditions switches to an amyloid-like conformation upon heat-treatment of the fibrils. *J Struct Biol* 2003, **141**(2):132–142.
29. Espargaró A, Sabate R, Ventura S: Kinetic and thermodynamic stability of bacterial intracellular aggregates. *FEBS Lett* 2008, **582**(25–26):3669–3673.
30. Bousset L, Thomson NH, Radford SE, Melki R: The yeast prion Ure2p retains its native alpha-helical conformation upon assembly into protein fibrils in vitro. *EMBO J* 2002, **21**(12):2903–2911.
31. Hess S, Lindquist SL, Scheibel T: Alternative assembly pathways of the amyloidogenic yeast prion determinant Sup35-NM. *EMBO Rep* 2007, **8** (12):1196–1201.
32. Caughey B, Raymond GJ, Callahan MA, Wong C, Baron GS, Xiong LW: Interactions and conversions of prion protein isoforms. *Adv Protein Chem* 2001, **57**:139–169.
33. Wickner RB, Taylor KL, Edskes HK, Maddelein ML, Moriyama H, Roberts BT: Yeast prions act as genes composed of self-propagating protein amyloids. *Adv Protein Chem* 2001, **57**:313–334.
34. Serio TR, Lindquist SL: The yeast prion [PSI⁺]: molecular insights and functional consequences. *Adv Protein Chem* 2001, **59**:391–412.
35. Krebs MR, Morozova-Roche LA, Daniel K, Robinson CV, Dobson CM: Observation of sequence specificity in the seeding of protein amyloid fibrils. *Protein Sci* 2004, **13**(7):1933–1938.
36. Frolova L, Le Goff X, Rasmussen HH, Cheperegine S, Drugeon G, Kress M, Arman I, Haenni AL, Celis JE, Philippe M, et al: A highly conserved eukaryotic protein family possessing properties of polypeptide chain release factor. *Nature* 1994, **372**(6507):701–703.
37. Stansfield I, Jones KM, Kushnir V, Dagkesamanskaya AR, Poznyakovskiy AI, Paushkin SV, Nierras CR, Cox BS, Ter-Avanesyan MD, Tuite MF: The products of the SUP45 (eRF1) and SUP35 genes interact to mediate translation termination in *Saccharomyces cerevisiae*. *EMBO J* 1995, **14**(17):4365–4373.

38. Liebman SW, Derkatch IL: **The yeast [PSI⁺] prion: making sense of nonsense.** *J Biol Chem* 1999, **274**(3):1181–1184.
39. Eaglestone SS, Cox BS, Tuite MF: **Translation termination efficiency can be regulated in *Saccharomyces cerevisiae* by environmental stress through a prion-mediated mechanism.** *EMBO J* 1999, **18**(7):1974–1981.
40. Tanaka M, Collins SR, Toyama BH, Weissman JS: **The physical basis of how prion conformations determine strain phenotypes.** *Nature* 2006, **442**(7102):585–589.
41. Castillo V, Espargaró A, Gordo V, Vendrell J, Ventura S: **Deciphering the role of the thermodynamic and kinetic stabilities of SH3 domains on their aggregation inside bacteria.** *Proteomics* 2010, **10**(23):4172–4185.
42. Serio TR, Cashikar AG, Moslehi JJ, Kowal AS, Lindquist SL: **Yeast prion [psi⁺] and its determinant, Sup35p.** *Methods Enzymol* 1999, **309**:649–673.
43. Liu JJ, Lindquist S: **Oligopeptide-repeat expansions modulate 'protein-only' inheritance in yeast.** *Nature* 1999, **400**(6744):573–576.
44. Garrity SJ, Sivanathan V, Dong J, Lindquist S, Hochschild A: **Conversion of a yeast prion protein to an infectious form in bacteria.** *Proc Natl Acad Sci U S A* 2010, **107**(23):10596–10601.
45. Bulone D, Masino L, Thomas DJ, San Biagio PL, Pastore A: **The interplay between PolyQ and protein context delays aggregation by forming a reservoir of protofibrils.** *PLoS One* 2006, **1**:e111.
46. King CY, Diaz-Avalos R: **Protein-only transmission of three yeast prion strains.** *Nature* 2004, **428**(6980):319–323.
47. Diaz-Avalos R, King CY, Wall J, Simon M, Caspar DL: **Strain-specific morphologies of yeast prion amyloid fibrils.** *Proc Natl Acad Sci U S A* 2005, **102**(29):10165–10170.
48. Sorensen HP, Mortensen KK: **Soluble expression of recombinant proteins in the cytoplasm of *Escherichia coli*.** *Microb Cell Fact* 2005, **4**:1.
49. Gonzalez-Montalban N, Garcia-Fruitos E, Ventura S, Aris A, Villaverde A: **The chaperone DnaK controls the fractioning of functional protein between soluble and insoluble cell fractions in inclusion body-forming cells.** *Microb Cell Fact* 2006, **5**:26.
50. Bach S, Talarek N, Andrieu T, Vierfond JM, Mettey Y, Galons H, Dormont D, Meijer L, Cullin C, Blondel M: **Isolation of drugs active against mammalian prions using a yeast-based screening assay.** *Nat Biotechnol* 2003, **21**(9):1075–1081.
51. Bach S, Tribouillard D, Talarek N, Desban N, Gug F, Galons H, Blondel M: **A yeast-based assay to isolate drugs active against mammalian prions.** *Methods* 2006, **39**(1):72–77.
52. DePace AH, Santoso A, Hillner P, Weissman JS: **A critical role for amino-terminal glutamine/asparagine repeats in the formation and propagation of a yeast prion.** *Cell* 1998, **93**(7):1241–1252.
53. Ross ED, Baxa U, Wickner RB: **Scrambled prion domains form prions and amyloid.** *Mol Cell Biol* 2004, **24**(16):7206–7213.
54. Immel F, Jiang Y, Wang YQ, Marchal C, Maillat L, Perrett S, Cullin C: **In vitro analysis of SpUre2p, a prion-related protein, exemplifies the relationship between amyloid and prion.** *J Biol Chem* 2007, **282**(11):7912–7920.
55. Sabate R, Gallardo M, Estelrich J: **An autocatalytic reaction as a model for the kinetics of the aggregation of beta-amyloid.** *Biopolymers* 2003, **71**(2):190–195.
56. Morell M, Espargaró A, Aviles FX, Ventura S: **Detection of transient protein-protein interactions by bimolecular fluorescence complementation: the Abl-SH3 case.** *Proteomics* 2007, **7**(7):1023–1036.

doi:10.1186/1475-2859-11-89

Cite this article as: Espargaró *et al.*: Yeast prions form infectious amyloid inclusion bodies in bacteria. *Microbial Cell Factories* 2012 **11**:89.

Submit your next manuscript to BioMed Central and take full advantage of:

- Convenient online submission
- Thorough peer review
- No space constraints or color figure charges
- Immediate publication on acceptance
- Inclusion in PubMed, CAS, Scopus and Google Scholar
- Research which is freely available for redistribution

Submit your manuscript at
www.biomedcentral.com/submit

