

# Higher Binding of the Dopamine D<sub>3</sub> Receptor-Preferring Ligand [<sup>11</sup>C]-(+)-Propyl-Hexahydro-Naphtho-Oxazin in Methamphetamine Polydrug Users: A Positron Emission Tomography Study

Isabelle Boileau,<sup>1,2,4,5,7</sup> Doris Payer,<sup>1,2,7</sup> Sylvain Houle,<sup>2</sup> Arian Behzadi,<sup>1,2,7</sup> Pablo M. Rusjan,<sup>2</sup> Junchao Tong,<sup>1,2,3,7</sup> Diana Wilkins,<sup>11</sup> Peter Selby,<sup>4,7,9,10</sup> Tony P. George,<sup>5,7</sup> Martin Zack,<sup>6,8,9</sup> Yoshiaki Furukawa,<sup>3</sup> Tina McCluskey,<sup>1,2,3</sup> Alan A. Wilson,<sup>2</sup> and Stephen J. Kish<sup>1,2,3,7,8</sup>

<sup>1</sup>Addiction Imaging Research Group, <sup>2</sup>Vivian M. Rakoff PET Imaging Centre, <sup>3</sup>Human Brain Laboratory, <sup>4</sup>Addictions, <sup>5</sup>Schizophrenia, and <sup>6</sup>Clinical Neuroscience Programs, Centre for Addiction and Mental Health, Toronto, Ontario, Canada M5T 1R8, Departments of <sup>7</sup>Psychiatry, <sup>8</sup>Pharmacology, <sup>9</sup>Public Health Sciences, and <sup>10</sup>Family and Community Medicine, University of Toronto, M5S 1A1 Toronto, Ontario, Canada, and <sup>11</sup>Center for Human Toxicology, University of Utah, Salt Lake City, Utah 84112

Positron emission tomography (PET) findings suggesting lower D<sub>2</sub>-type dopamine receptors and dopamine concentration in brains of stimulant users have prompted speculation that increasing dopamine signaling might help in drug treatment. However, this strategy needs to consider the possibility, based on animal and postmortem human data, that dopaminergic activity at the related D<sub>3</sub> receptor might, in contrast, be elevated and thereby contribute to drug-taking behavior. We tested the hypothesis that D<sub>3</sub> receptor binding is above normal in methamphetamine (MA) polydrug users, using PET and the D<sub>3</sub>-preferring ligand [<sup>11</sup>C]-(+)-propyl-hexahydro-naphtho-oxazin ([<sup>11</sup>C]-(+)-PHNO). Sixteen control subjects and 16 polydrug users reporting MA as their primary drug of abuse underwent PET scanning after [<sup>11</sup>C]-(+)-PHNO. Compared with control subjects, drug users had higher [<sup>11</sup>C]-(+)-PHNO binding in the D<sub>3</sub>-rich mid-brain substantia nigra (SN; +46%;  $p < 0.02$ ) and in the globus pallidus (+9%;  $p = 0.06$ ) and ventral pallidum (+11%;  $p = 0.1$ ), whereas binding was slightly lower in the D<sub>2</sub>-rich dorsal striatum (approximately -4%, NS; -12% in heavy users,  $p = 0.01$ ) and related to drug-use severity. The [<sup>11</sup>C]-(+)-PHNO binding ratio in D<sub>3</sub>-rich SN versus D<sub>2</sub>-rich dorsal striatum was 55% higher in MA users ( $p = 0.004$ ), with heavy but not moderate users having ratios significantly different from controls. [<sup>11</sup>C]-(+)-PHNO binding in SN was related to self-reported “drug wanting.” We conclude that the dopamine D<sub>3</sub> receptor, unlike the D<sub>2</sub> receptor, might be upregulated in brains of MA polydrug users, although lower dopamine levels in MA users could have contributed to the finding. Pharmacological studies are needed to establish whether normalization of D<sub>3</sub> receptor function could reduce vulnerability to relapse in stimulant abuse.

## Introduction

Animal data have long suggested that the neurotransmitter dopamine (DA) plays a role in several aspects of addiction, in-

cluding addiction to the dopaminergic stimulant drugs methamphetamine (MA) and cocaine. However, despite years of intense investigation, no pharmacotherapy, DA related or other, has been approved for treatment of stimulant dependence (Kish, 2008). Whereas evidence points to low levels of DA and DA D<sub>2</sub> receptor number in stimulant users (Wilson et al., 1996; Volkow et al., 2001, 2009; Martinez et al., 2004, 2011; Lee et al., 2009; Wang et al., 2011), some animal and postmortem human data in cocaine users (Staley and Mash, 1996; Mash, 1997; Segal et al., 1997; Sokoloff et al., 2001) suggest that activity at the D<sub>3</sub> receptor,

Received Aug. 25, 2011; revised Nov. 16, 2011; accepted Nov. 23, 2011.

Author contributions: I.B., P.M.R., J.T., P.S., T.P.G., Y.F., A.A.W., and S.J.K. designed research; I.B., A.B., M.Z., T.M., and A.A.W. performed research; S.H. and D.W. contributed unpublished reagents/analytic tools; I.B., A.B., and P.M.R. analyzed data; I.B., S.J.K., and D.P. wrote the paper.

This work was supported in part by National Institutes of Health (NIH)—NIDA Grant R01DA025096 (S.J.K. and I.B.). I.B. was supported by an Investigator Award from the Ontario Mental Health Foundation and by the Canadian Institute of Health Research (CIHR) and Parkinson's Society of Canada. T.P.G. was supported by grants/contracts from Pfizer, the National Institutes of Health, the Canada Foundation for Innovation, the Canadian Institutes of Health Research, and the Ontario Mental Health Foundation. P.S. was supported by grants/contracts from Health Canada, Smoke Free Ontario, Ontario Ministry of Health Promotion, Canadian Tobacco Control Research Initiative, CIHR, Alberta Health Services (formerly Alberta Cancer Board), Vancouver Coastal Authority, Pfizer, Ontario Lung Association, NIDA, and Canadian Cardiovascular Society and by speakers bureau/honoraria from Schering Canada, Johnson & Johnson Consumer Health Care Canada, Pfizer Inc. Canada, Pfizer Global, Sanofi-Synthelabo, Canada, GSK Canada, Genpharm and Prempharm Canada, and NABI Pharmaceuticals. M.Z. was supported by the Ontario Problem Gambling Research Centre. A.A.W. was supported by the Ontario Mental Health Foundation. S.H. was supported by the Canada Foundation for Innovation and Ontario Research Funds. D.W. was supported by the NIH—National Cancer Institute and NIH—NIDA, McNeil Consumer Products, and Partnership for a Clean Competition in Sports. We thank Alvina Ng, Jeannie Fong, Armando Garcia, Winston Stableford, and Min Wong for excellent technical assistance.

S.J.K. received a fee to provide expert witness testimony regarding the adverse effects of methamphetamine. T.P.G. received consulting fees from Pfizer Janssen, Astra Zeneca, Prempharm, Bristol Myers Squibb, Sepracor, and Eli Lilly. P.S. received consulting fees from Schering Canada, Johnson & Johnson Consumer Health Care Canada, Pfizer Inc. Canada, Pfizer Global, Sanofi-Synthelabo Canada, GSK Canada, Genpharm and Prempharm Canada, NABI Pharmaceuticals, V-CC Systems Inc., E-Health Behavior Change Software Co., and Astra Zeneca Canada Inc. D.P., A.B., P.M.R., J.T., T.M., and Y.F. report no financial relationships with commercial interests.

Correspondence should be addressed to Dr. Isabelle Boileau, Centre for Addiction and Mental Health, 250 College Street, Toronto, Ontario, Canada M5T 1R8. E-mail: isabelle\_boileau@camh.net.

DOI:10.1523/JNEUROSCI.4371-11.2012

Copyright © 2012 the authors 0270-6474/12/321353-07\$15.00/0

**Table 1. Subject demographic information**

	Control subjects ( <i>n</i> = 16) <sup>a</sup>	Methamphetamine users ( <i>n</i> = 16) <sup>a</sup>	Group difference ( <i>p</i> value)
Age (years)	28.43 ± 5.01 (16)	27.93 ± 5.66 (16)	0.32
Gender	14 (M)	12 (M)	0.33
Ethnicity	13 (W)	13 (W)	0.67
Weight (kg)	74.95 ± 17.96 (16)	80.53 ± 14.52 (16)	0.21
Years of education	16.68 ± 2.62 (16)	12.75 ± 2.56 (16)	<0.01
Premorbid IQ (NART)	117.43 ± 5.77 (12)	115.4 ± 4.50 (16)	0.31
Beck Depression Inventory	1.18 ± 2.16 (16)	6 ± 6.83	0.02
Inventory of Depressive Symptomatology	4.13 ± 4.45 (15)	10 ± 8.59 (16)	0.02
Nicotine smokers (>5 cigarettes d)	1 (16)	7 (16)	0.02
Cigarettes per day	0.7 ± 1.65 (16)	4.8 ± 4.8 (16)	<0.01
Cannabis (≥1 time per month)	3 (16)	9 (16)	0.02
Alcohol use (>14 drinks per week)	0 (16)	1 (16)	0.3
Purdue Pegboard Task			
Dominant	15.5 ± 1.89 (16)	13.93 ± 2.97 (16)	0.03
Nondominant	14.62 ± 1.70 (16)	14 ± 1.93 (16)	0.34
Both hands	12.31 ± 1.62 (16)	11.5 ± 1.5 (16)	0.15
Trails			
A	21.83 ± 4.96 (12)	25.46 ± 4.50 (15)	0.03
B	45.75 ± 9.70 (12)	51.06 ± 11.73 (15)	0.1
Digit symbol substitution			
Written	78.6 ± 12.2 (10)	59.2 ± 14.8 (15)	<0.01
Eysenck Personality Inventory			
Extroversion	10.5 ± 5.05 (16)	14.07 ± 4.32 (14)	<0.01
Neuroticism	4.87 ± 3.24 (16)	9.57 ± 3.56 (14)	<0.01
Impulsivity	3.31 ± 1.66 (16)	5.07 ± 2.05 (14)	0.02

M, Male; W, White.

<sup>a</sup>Data are mean ± SD (*n*).Italics indicate *p* < 0.05.

a member of the D<sub>2</sub>-like receptor family, may be pathologically increased in addiction. If correct, a therapeutic strategy aimed at a generalized increase in DA signaling might successfully address a D<sub>2</sub> deficiency but exacerbate an already exaggerated D<sub>3</sub>-related process.

Over the past 20 years, interest in the novel D<sub>3</sub> receptor, for which the function is still unknown, has developed in large part because of the strikingly high preferential expression of the receptor in limbic brain areas associated with reward and motivation (e.g., ventral limbic striatum) (Sokoloff et al., 1990; Murray et al., 1994), whereas the D<sub>2</sub> receptor is distributed uniformly throughout the striatum (Sokoloff et al., 1990). In animal models, D<sub>3</sub>-selective antagonists decrease drug-seeking behavior, raising the possibility that this receptor modulates motivation to self-administer drugs (Le Foll et al., 2005; Heidbreder and Newman, 2010). Animal data also suggest that sensitization to DA-elevating drugs [long hypothesized to explain stimulant addiction in humans (Robinson and Berridge, 1993)] secondary to repeated dopaminergic stimulation coincides with increased D<sub>3</sub> receptor expression in ventral, but also dorsal striatal, regions that do not normally express high levels of D<sub>3</sub> (Bordet et al., 1997). Together, the findings tentatively suggest that increased transmission at the D<sub>3</sub> receptor in limbic striatal and ectopic regions could underlie some aspects of psychostimulant addiction.

With the recent development of a D<sub>3</sub>-preferring positron emission tomography (PET) radiotracer, [<sup>11</sup>C]-(+)-propylhexahydro-naphtho-oxazin ([<sup>11</sup>C]-(+)-PHNO) (Wilson et al., 2005), it has become possible to investigate the contribution of the D<sub>3</sub> receptor in living human brain. [<sup>11</sup>C]-(+)-PHNO binding (~20-fold selectivity for D<sub>3</sub> over D<sub>2</sub>) can be interpreted in a region-dependent manner, with binding in dorsal striatum (high D<sub>2</sub>/low D<sub>3</sub> expression) more likely reflecting D<sub>2</sub> receptor availability and binding in hypothalamus and substantia nigra (SN) reflecting predominantly D<sub>3</sub> availability. The ventral pallidum

(VP) and globus pallidus (GP) are areas of mixed D<sub>2</sub>/D<sub>3</sub> binding where the D<sub>3</sub> fraction has been estimated to represent 75 and 65%, respectively (Tziortzi et al., 2011).

Based on the above data, we tested the hypothesis that MA users would have above-normal [<sup>11</sup>C]-(+)-PHNO binding in a D<sub>3</sub>-rich brain area (midbrain/SN) and decreased binding in a high D<sub>2</sub>/low D<sub>3</sub>-expressing brain area (dorsal striatum).

## Materials and Methods

**Subjects.** Sixteen healthy and 16 MA-using volunteers participated in a PET imaging study approved by the Centre for Addiction and Mental Health Research Ethics Board. Brain PET measures of the vesicular monoamine transporter have been reported previously for some of these cases (Boileau et al., 2008).

All participants underwent a comprehensive medical and psychiatric screening interview and completed a comprehensive drug-history questionnaire (structured and open ended, locally developed), which included questions about drug-use frequency, typical dose and route of administration, years of use, recent drug use, withdrawal symptoms, time spent in drug-related activities (e.g.: using, seeking, recovering from drug effects), number of failed attempts to quit, impact on daily activities, and readiness to change use. MA users and control subjects were healthy males or females (age, 19–45 years) and were free of significant medical conditions and current or previous *Diagnostic and Statistical Manual of Mental Disorders*, fourth revision (DSM-IV) Axis I disorders (First et al., 1996) (excluding stimulant abuse/dependence in the MA group and nicotine dependence in both groups). Study inclusion criteria for the MA group included the following: (1) self-reported use of MA as the primary drug of abuse; (2) meeting DSM-IV criteria for MA abuse or dependence (all subjects also met proposed DSM-V criteria for “amphetamine use disorder”); (3) testing positive for MA in scalp hair; and (4) no current (12 months) self-reported abuse of or dependence on drugs other than MA (except nicotine). On screening day, subjects completed mood scales, a general IQ test, and the Eysenck Personality Inventory (Eysenck, 1953) (Table 1).

**PET imaging session and region-of-interest analyses.** MA users were asked to withhold all illicit drug use for a minimum of 14 d before the scan. On the day of the scan, all subjects were required to test negative on a urine drug screen (9-Drug Test Panel; BTNX) and complete the Profile of Mood States (POMS) questionnaire (McNair et al., 1992), visual analog scales (VAS) measuring drug craving, and the Purdue Pegboard Task of motor dexterity (Lafayette Instrument Company). A short battery of neuropsychological tests was administered after the PET scan (Table 1).

On a separate session (<7 d after the PET scan), all subjects received an oral dose of dextro-amphetamine (0.4 mg) and reported mood and drug-related feelings (results of this study will be reported separately).

[<sup>11</sup>C]-(+)-PHNO synthesis and image acquisition protocols on the CPS-HRRT neuro-PET camera system (Siemens Medical Imaging) were described in detail previously (Graff-Guerrero et al., 2008). Scans were initiated after bolus injection of [<sup>11</sup>C]-(+)-PHNO (mean dose, 303.4 MBq; specific activity, 1263.89 mCi/μmol; mean mass, 2.3 μg). Raw data were reconstructed by filtered-back projection. Spin echo proton-density weight magnetic resonance images (MRIs; slice thickness, 2 mm; repetition time, >5300 ms; echo time, 13 ms; flip angle, 90°; number of excitations, 2; acquisition matrix, 256 × 256; FOV, 22 cm) were obtained (Signa 1.5T MRI scanner; General Electric Medical Systems) for region-of-interest (ROI) delineation.

ROI delineation and time activity curve analyses were performed using in-house image analysis software for automated quantification of PET data [ROMI; details by Rusjan et al. (2006)]. Bilateral subcompartments of the striatum, including sensorimotor striatum (SMST), associative striatum (AST), and limbic striatum (LST), were automatically segmented (Rusjan et al., 2006) as described by Martinez et al. (2003). The (whole) GP was delineated with the procedure described and validated by Rusjan (2008). The ROI identified as the midbrain SN corresponded to contiguous midbrain gray matter voxels extending from planes  $z = -4$  to  $z = -14$  on six consecutive transverse slices in stereotaxic space (2 mm, MNI space). Identification of midbrain gray matter voxels within this region was performed by using the automated procedure described by Rusjan et al. (2006). The automatically selected VP covered approximately five coronal slices starting at the interhemispheric anterior commissural connection and was defined laterally and medially as described by Tziortzi et al. (2011). Cerebellar cortex (excluding vermis, lobules IX and X) served as the reference region. [<sup>11</sup>C]-(+)-PHNO time activity curves were obtained from dynamic data, and specific binding (BP<sub>ND</sub>) was estimated in each ROI using the simplified reference tissue method (SRTM) (Lammertsma and Hume, 1996). Parameter estimation was performed with PMOD (version 2.8.5; PMOD Technologies).

**Voxel-wise parameter estimation.** Voxel-wise parameter estimation of [<sup>11</sup>C]-(+)-PHNO binding was generated using the basis function implementation of SRTM (Lammertsma and Hume, 1996) with the tissue time activity curve of cerebellar cortex as the reference region. Normalized BP<sub>ND</sub> maps (SPM2; Wellcome Trust Centre for Neuroimaging, London, UK) were statistically investigated to assess significant contrasts between groups at every voxel, using independent sample *t* test analysis (SPM8). The threshold for significant clusters was set to a family-wise error (FWE) corrected  $p < 0.05$ . This approach is aimed at detecting differences in neuroreceptor ligand binding at the voxel level, with no a priori anatomical hypothesis, and enables circumvention of some limitations of ROI placement, as well as investigation of regions not included in our ROI template (e.g., the hypothalamus).

**Statistical approach.** Group comparisons of [<sup>11</sup>C]-(+)-PHNO binding across ROIs were conducted using standard repeated-measures ANOVAs or ANCOVAs (ROIs × group). When indicated, sphericity corrections were made with Greenhouse-Geisser adjustments. Least significant difference *t* tests, Bonferroni corrected for planned comparisons, were applied to determine the significance of regional differences in BP<sub>ND</sub> between groups. The ratio of SN [<sup>11</sup>C]-(+)-PHNO BP<sub>ND</sub> [100% D<sub>3</sub> (Tziortzi et al., 2011)] to SMST [<sup>11</sup>C]-(+)-PHNO BP<sub>ND</sub> [0% D<sub>3</sub> (Tziortzi et al., 2011)] was estimated as an index of individual D<sub>3</sub> levels, and *t* tests were used to assess group differences. One-tailed tests were selected to investigate potential decreased binding in D<sub>2</sub>-rich dorsal striatum. Relationships between continuous variables were analyzed with the

**Table 2. Co-used substances**

	Control subjects (n = 16)	Methamphetamine users (n = 16)
Methamphetamine/amphetamine	0% 0 (11)	100% 15 (15)
Cocaine/cocaine metabolites <sup>a</sup>	0% 0 (11)	80% 12 (15)
MDMA/MDA/MDEA <sup>a</sup>	0% 0 (11)	53.3% 8 (15)
Benzodiazepine <sup>a</sup>	0% 0 (11)	33% 5 (15)
Morphine/codeine <sup>a</sup>	0% 0 (11)	46% 7 (15)
THC (>1 month) <sup>b</sup>	18.7% 3 (16)	56.2% 9 (16)
Ketamine <sup>b</sup>	0% 0 (16)	25% 4 (16)

<sup>a</sup>Hair.

<sup>b</sup>Self-report.

MDMA, 3,4-Methylenedioxyamphetamine; MDA, 3,4-Methylenedioxyamphetamine; MDEA, 3,4-Methylenedioxy-N-ethylamphetamine.

**Table 3. Methamphetamine use patterns**

	Methamphetamine use <sup>a</sup>
Years of MA use	5.1 ± 2.7; 2–11; 4 (16)
Days since last use	18.5 ± 20.5; 6–90; 14 (16)
Typical frequency (days/week)	2.1 ± 1.1; 1–5; 2 (16)
*Binge in the last 30 d <sup>b</sup>	5.1 ± 2.7; 0–10; 5.5 (16)
Route	8 (16) intravenous, smoke; 8 (16) nasal, oral
Estimated dose (mg)	325 ± 167; 100–500; 300 (12)

<sup>a</sup>Data are mean ± SD; range; median (n).

<sup>b</sup>Period of 2–3 d of use.

Pearson product moment correlation coefficient and Spearman's rank test for categorical data.

## Results

### Demographic characteristics and drug profiles

MA polydrug users matched control subjects on age, gender, and ethnicity but had slightly lower education levels. They scored lower than control subjects on the Purdue test of motor dexterity and on tests of working memory and attention, but groups did not significantly differ with respect to estimated premorbid IQ (NART) (Table 1). MA polydrug users self-rated as being more impulsive, and although not clinically depressed, had significantly greater self-reported depressive symptoms. They also used more cannabis and tobacco but did not report drinking more alcohol (Table 1).

Hair analysis confirmed use of MA in all subjects with the exception of one MA user, who did not have scalp hair but provided an MA-positive urine sample at interview. Although MA-using subjects reported MA as the primary drug of abuse, hair analysis disclosed presence of other drugs in hair, particularly cocaine metabolites, confirming, as expected, that the MA users were polydrug users (Table 2).

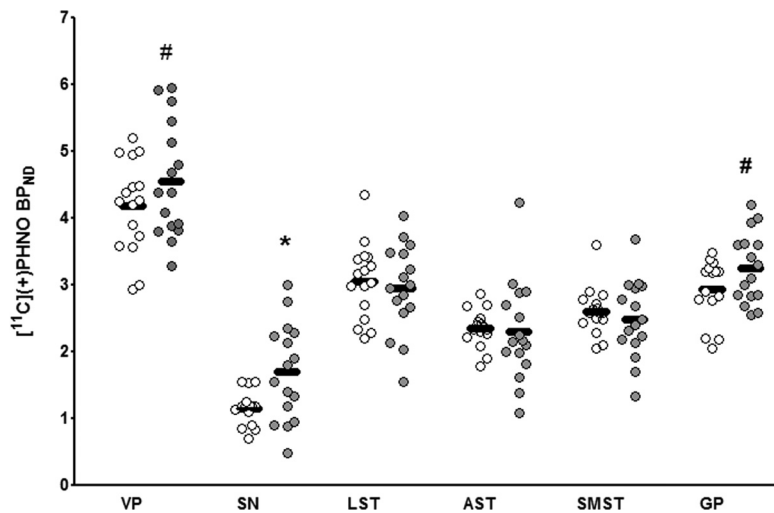
The pattern of MA use was variable across the sample (Table 3). Sixty-three percent (10 of 16) of the sample was composed of "heavy" MA users who preferred smoking or injecting MA, often consumed doses >300 mg per occasion, and used MA >3 d/week for at least 3 months. The remaining 38%, "moderate" MA users, were lower-dose (<300 mg), bimonthly intranasal users. Ninety-three percent (15 of 16) had used MA at least once in the 30 d before the study, and only one case had used MA for <3 years at the time of the study. Cocaine use was prevalent in the sample based on hair data. Urine toxicology at the time of the screening (>14 d before the

scan) indicated that 5 of 12 MA users who tested positive for cocaine in hair recently used cocaine. Self-report indicated that the average use of cocaine in the last 30 d corresponded to 1.75 d.

### PET [<sup>11</sup>C]-(+)-PHNO BP<sub>ND</sub>

An ANOVA investigating regional differences in [<sup>11</sup>C]-(+)-PHNO binding across groups (with age as a covariate, as age related changes in D<sub>2</sub> (Rinne et al., 1993) and D<sub>3</sub> (Graff-Guerrero et al., 2009) binding have been suggested) yielded a significant Group × ROI interaction ( $F_{(5,135)} = 3.35$ ;  $p = 0.02$ ). Pairwise contrasts revealed that MA use was associated with significantly higher [<sup>11</sup>C]-(+)-PHNO BP<sub>ND</sub> in D<sub>3</sub>-rich SN (46%; corrected  $p = 0.02$ ), with trends in mixed D<sub>3</sub>/D<sub>2</sub> regions including the GP (11%; corrected  $p = 0.06$ ) and VP (9%; corrected  $p = 0.1$ ). Accounting for use of nicotine and cannabis did not change this finding (ANOVA with cannabis as covariate:  $F_{(5,135)} = 1.98$ ,  $p = 0.04$ ; ANOVA with nicotine as covariate:  $F_{(5,130)} = 1.78$ ,  $p = 0.05$ ). In subcompartments of the D<sub>2</sub>-rich dorsal striatum, only a small nonsignificant difference in BP<sub>ND</sub> was observed (~4%) (Fig. 1). However, a separate ANOVA entering severity of MA use as a grouping variable and age as a covariate revealed that heavy but not moderate MA use was associated with significantly lower [<sup>11</sup>C]-(+)-PHNO binding ( $F_{(10,130)} = 3.89$ ;  $p = 0.001$ ). Relative to controls, decreased [<sup>11</sup>C]-(+)-PHNO binding was maximal in the SMST (−11.4%;  $p = 0.04$ , uncorrected for one-tailed comparison) but also occurred in the whole dorsal striatum [one-way ANOVA;  $F_{(2,30)} = 2.87$ ;  $p = 0.04$  (−11%;  $p = 0.03$ )]. This effect was not significant in the LST ( $p > 0.05$ ). The pairwise comparison also revealed that the increase in D<sub>3</sub> receptor binding in the midbrain SN was driven by severity of use since heavy but not moderate use was associated with above control [<sup>11</sup>C]-(+)-PHNO BP<sub>ND</sub> ( $F_{(10,130)} = 3.89$ ;  $p = 0.001$ ;  $p = 0.04$ ). Investigating differences in D<sub>3</sub>/D<sub>2</sub> ratios (SN/SMST [<sup>11</sup>C]-(+)-PHNO BP<sub>ND</sub>) between groups, MA users had a 55% greater D<sub>3</sub> to D<sub>2</sub> binding fraction when compared with controls ( $p = 0.004$ ), with heavy (72%;  $p = 0.001$ ) but not moderate (26%;  $p = 0.2$ ) users having ratios significantly different from controls. Standard uptake values for cerebellum did not differ between MA and controls ( $p > 0.05$ ). [<sup>11</sup>C]-(+)-PHNO mass injected was not significantly different between groups ( $p > 0.3$ ), and no significant correlation between mass and [<sup>11</sup>C]-(+)-PHNO BP<sub>ND</sub> was observed in any region investigated ( $p > 0.1$ ).

To investigate the functional significance of differences in [<sup>11</sup>C]-(+)-PHNO binding, we tested for relationships between regional BP<sub>ND</sub> and self-report measures taken at baseline and after a priming dose of amphetamine. In the MA group, lower regional [<sup>11</sup>C]-(+)-PHNO binding in dorsal striatum was associated with greater severity of MA use (years of use: AST,  $r = -0.6$ ,  $p = 0.01$ ; SMST,  $r = -0.5$ ,  $p = 0.01$ ; severity rank: AST,  $\rho = -0.6$ ,  $p = 0.01$ ; SMST,  $\rho = -0.8$ ,  $p < 0.001$ ) and daily nicotine use (SMST,  $r = -0.5$ ,  $p = 0.01$ ). On the other hand, greater [<sup>11</sup>C]-(+)-PHNO binding in dorsal striatum was associated with higher (negative) subjective responses to the low-dose amphetamine challenge (VAS “mind racing”: AST,  $r = 0.6$ ,  $p = 0.01$ ; SMST,  $r = 0.6$ ,  $p = 0.01$ ). This effect was also observed in the



**Figure 1.** Regional [<sup>11</sup>C]-(+)-PHNO BP<sub>ND</sub> in MA users ( $n = 16$ ; gray circles) and in control subjects ( $n = 16$ ; white circles). \* $p < 0.05$ , corrected; # $p < 0.1$ , corrected.

overall sample after covarying out the effect of Group (partial correlation with group as a covariate) such that, in the dorsal striatum, higher binding was associated with greater drug-related (negative) feelings (VAS mind racing: AST,  $r = 0.6$ ,  $p = 0.005$ ; SMST,  $r = 0.7$ ,  $p = 0.001$ ). Higher [<sup>11</sup>C]-(+)-PHNO BP<sub>ND</sub> in the D<sub>3</sub>-rich SN predicted motivation to use methamphetamine and, to a lesser extent, to amphetamine-induced “rush” in MA users (VAS “drug wanting”:  $r = 0.8$ ,  $p = 0.001$ ; VAS “rush”:  $r = 0.4$ ,  $p = 0.06$ ) and in the sample overall (VAS drug wanting:  $r = 0.6$ ,  $p = 0.001$ ; VAS rush:  $r = 0.5$ ,  $p = 0.01$ ).

In the voxel-wise statistical analyses (SPM8), we identified small clusters of greater [<sup>11</sup>C]-(+)-PHNO BP<sub>ND</sub> in MA users relative to controls in an area corresponding to the midbrain (SN/VTA) (Fig. 2A). Small, noncontiguous clusters of increased binding were also detected in the basal forebrain (around VP); however, those were below the significance threshold (data not shown). No clusters of significantly lower [<sup>11</sup>C]-(+)-PHNO BP<sub>ND</sub> survived correction for multiple comparisons; however, using a more liberal threshold, differences between groups were identified at discrete sites within the dorsal striatum, with the most significant cluster of lower [<sup>11</sup>C]-(+)-PHNO BP<sub>ND</sub> in the MA group occurring in the postcommissural putamen (SMST) and the caudate (AST) (Fig. 2B).

## Discussion

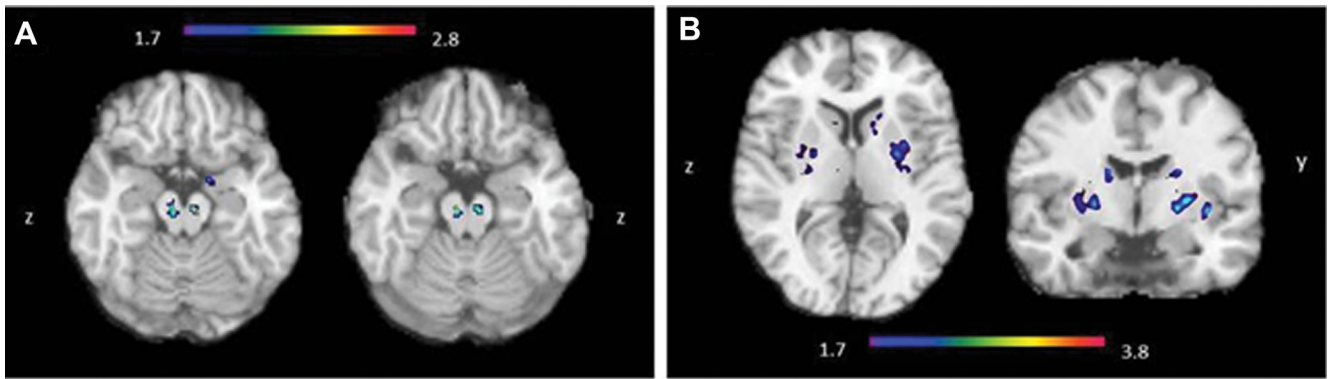
To our knowledge, this is the first *in vivo* brain imaging study of the D<sub>3</sub> receptor in drug-abusing humans. We found evidence for greater DA D<sub>3</sub> receptor binding in brain of MA users. As the D<sub>3</sub> receptor has been implicated in drug-taking behavior, this finding is relevant to proposed therapeutic strategies targeting D<sub>3</sub>-selective antagonism.

Our findings are discussed below in the context of assessing [<sup>11</sup>C]-(+)-PHNO binding in a region-dependent manner, with binding in dorsal striatum more likely reflecting D<sub>2</sub> receptor availability and binding in SN reflecting predominantly D<sub>3</sub> availability (Tziortzi et al., 2011).

### [<sup>11</sup>C]-(+)-PHNO binding in D<sub>2</sub>-rich striatum is slightly decreased

PET studies have shown that addictive disorders in humans are associated with low striatal D<sub>2/3</sub> receptor binding (Volkow et al., 2001; Martinez et al., 2004; Lee et al., 2009). In our sample, which included heavy and moderate MA users, we detected only mini-





**Figure 2.** *A*, Voxel-wise group comparison illustrating higher [<sup>11</sup>C]-(+)-PHNO BP<sub>ND</sub> in the midbrain of MA-abusing than control subjects ( $t_{\max} = 2.79$ ;  $p = 0.01$ ; MNI coordinates: 8, -10, -12) and cluster above the  $p < 0.05$  significance threshold when using the random field FWE correction for multiple comparisons within a small volume (10-mm-radius sphere; MNI coordinates: 10, -18, -12). *B*, Voxel-wise group comparison illustrating lower [<sup>11</sup>C]-(+)-PHNO BP<sub>ND</sub> in the striatum of MA-abusing than control subjects ( $t_{\max} = 3.90$ ;  $p = 0.04$ , uncorrected;  $k_E = 21$ ; MNI coordinates: 24, 2, 0). The image is thresholded at a probability uncorrected for multiple comparisons.

mal nonsignificant decreases in D<sub>2/3</sub> receptor binding in D<sub>2</sub>-rich dorsal striatum; however, in line with previous reports (Lee et al., 2009), MA abuse severity and chronicity were predictive of binding, such that heavy, but not moderate, use of MA was associated with significantly lower binding in dorsal striatum. The regional extent of the finding as indicated by both the ROI and voxel-wise approach, was comparable to that in previous PET studies in MA users (Lee et al., 2009), showing maximal effect in dorsal striatum (including SMST and AST) versus LST.

Overall, the differences in D<sub>2/3</sub> receptor binding in dorsal striatum were slightly below values reported in the literature. Although lower cumulative exposure to MA in our sample can reasonably explain our marginal finding, intrinsic properties of [<sup>11</sup>C]-(+)-PHNO could also partly account for the smaller magnitude of effect. As animal studies show that repeated exposure to DA-elevating drugs increases D<sub>3</sub> receptor population in areas previously almost entirely devoid of D<sub>3</sub> receptors [i.e., the dorsal striatum (Bordet et al., 1997)], an ectopic upregulation of the D<sub>3</sub> receptor in dorsal striatum could have masked potential loss of D<sub>2</sub> receptor binding. Alternatively, differences in DA levels ( $K_d$ ) across groups might have confounded measurement of receptor density ( $B_{\max}$ ). As [<sup>11</sup>C]-(+)-PHNO is a high-affinity agonist ligand, it is more sensitive (vs [<sup>11</sup>C]raclopride) to modulation by DA (Willeit et al., 2008; Shotbolt et al., 2012). It is therefore possible that low levels of DA in brain of MA users (Wilson et al., 1996; Moszczynska et al., 2004) could lead to greater available receptor sites for binding, hence increasing BP<sub>ND</sub> and masking the presumed loss.

The functional significance of low D<sub>2</sub> receptor binding in addiction is unclear, and, concurring with other studies (Martinez et al., 2004), we did not find that decreased D<sub>2</sub> receptor density was related to drug-craving or positive effects of amphetamine. However, partly in line with the notion that greater D<sub>2</sub> DA stimulation is associated with negative effects of stimulants (Volkow et al., 1999), which could protect against further drug use, higher striatal D<sub>2</sub> receptor binding was related to “racing thoughts,” a negative effect of amphetamine associated with anxiety (and hypomanic state). Thus, in MA users, lower aversive side effects of amphetamine, presumably mediated by decreased D<sub>2</sub> stimulation, could contribute to MA abuse.

#### [<sup>11</sup>C]-(+)-PHNO binding in D<sub>3</sub>-rich compartments is increased

In contrast to the D<sub>2</sub> findings, our data suggest that brain D<sub>3</sub> receptor density in the D<sub>3</sub>-rich SN, but also in the mixed D<sub>2</sub>/D<sub>3</sub>

GP/VP, might be higher in psychostimulant users. Although lower DA levels (Moszczynska et al., 2004) might, in principle (see Shotbolt et al., 2012), explain increased [<sup>11</sup>C]-(+)-PHNO binding in the MA users, this possibility is less likely in view of the results of some (though not all; see Richtand et al., 2001) preclinical studies showing increased D<sub>3</sub> receptor levels and mRNA after stimulant exposure in nucleus accumbens (where D<sub>3</sub> predominates) and extrastriatal areas (SN, VP, and GP) (Morissette et al., 1998; Quik et al., 2000), as well as postmortem brain investigations reporting that D<sub>3</sub> receptor binding is higher in cocaine overdose fatalities (Staley and Mash, 1996; Mash, 1997; Segal et al., 1997; Sokoloff et al., 2001). Increased [<sup>11</sup>C]-(+)-PHNO binding may be a consequence of D<sub>3</sub> receptor upregulation in GABAergic neurons containing substance P and dynorphin (Frankel et al., 2008), as concentrations of dynorphin in brain and plasma brain-derived neurotrophic factor, the latter considered to regulate D<sub>3</sub> expression (Guillin et al., 2001), are elevated in human stimulant users (Kim et al., 2005; Frankel et al., 2007, 2008).

#### Study limitations

Currently, use of [<sup>11</sup>C]-(+)-PHNO is the only method available to quantify D<sub>3</sub> receptors *in vivo*. In this regard, study limitations include use of a radioligand lacking absolute specificity for the DA D<sub>3</sub> receptor and problematic interpretation of binding data in areas that contain both D<sub>2</sub> and D<sub>3</sub> receptors. Recent studies, however, have suggested that the [<sup>11</sup>C]-(+)-PHNO signal can be regionally divided into a “relatively pure” D<sub>3</sub> component (the SN and hypothalamus, in which 100% of [<sup>11</sup>C]-(+)-PHNO binding is to D<sub>3</sub>) and a D<sub>2</sub> component [the dorsal striatum, where 100% of the binding is to the D<sub>2</sub> (Tziortzi et al., 2011)]. This characterization of the signal makes it possible to draw some conclusions, albeit highly region dependent, from our findings.

Our failure to find group differences in D<sub>2/3</sub> receptor binding in the LST, a region where the relative fraction of D<sub>3</sub> to D<sub>2</sub> receptor (26%) is larger than that in the dorsal striatum (<6%), could, for example, be attributed to the above-mentioned limitation. Specifically, the possibility that coexisting D<sub>2</sub> and D<sub>3</sub> receptor systems have opposing functional responses to DA-elevating drugs (Levesque et al., 1995) could have canceled out an effect in either direction. An alternative explanation is the fact that the smaller LST is more prone to partial volume effects and higher variability of binding values, which together increase noise and limit measurements in this area.

A practical issue also to be considered is the fact that at the doses of [<sup>11</sup>C]-(+)-PHNO used in the current study and in stud-

ies of other groups (Searle et al., 2010; Tziortzi et al., 2011), injected mass may lead to receptor occupancies higher than tracer doses, which could result in an underestimation of BP<sub>ND</sub> in both groups and possibly decrease ability to detect a difference. Importantly, however, there were no significant differences in mass injected between groups or correlations between BP<sub>ND</sub> and mass injected, making it unlikely that the finding of a group difference is attributable to a mass effect (see Shotbolt et al., 2012, their supplementary information). A methodological caveat of using [<sup>11</sup>C]-(+)-PHNO that needs to be mentioned is the possibility that the result is biased by differential specific binding in the cerebellum. This potential bias is unlikely to explain our finding since cerebellar standard uptake values were not significantly different between groups; furthermore, the region selected as cerebellar input function excludes areas reported to contain D<sub>3</sub> receptors (vermis, lobules IX and X) (Murray et al., 1994). Another issue for consideration is the potential generic confound of other drugs used on D<sub>3</sub> receptor binding. Although subjects reported MA as the primary drug of abuse, drug hair analysis and self-report data showed, not unexpectedly, that drugs other than MA (nicotine, cocaine, and opiates) were used (and sometimes not reported) by subjects, which might well have influenced DA receptor expression. However, in light of findings that low D<sub>2</sub> receptor binding is a feature of different classes of abused drugs (Volkow et al., 2009), it could be argued that high brain D<sub>3</sub> might also be a characteristic across different drugs of abuse, a possibility that could be addressed in future investigations. Finally, we acknowledge that although animal studies suggest that heightened D<sub>3</sub> expression in MA users could reasonably be caused by sustained MA-induced dopaminergic stimulation, this difference could have predated drug use.

### Possible functional implication of increased D<sub>3</sub> and conclusion

Notwithstanding the above limitations, our brain imaging findings do suggest that the DA D<sub>3</sub> receptor might be upregulated in polydrug MA users. The brain area involved includes at least the D<sub>3</sub>-rich SN but might also involve GP/VP brain regions and striatum in which a D<sub>3</sub> increase might have been masked by a D<sub>2</sub> reduction. Although D<sub>3</sub> receptors are both reciprocal autoreceptors and heteroreceptors (Sokoloff et al., 1990), evidence of D<sub>3</sub> receptor mRNA induction and increased D<sub>3</sub> receptor binding in animals pretreated with DA-elevating drugs has suggested that the newly synthesized receptors are likely to occur in medium-sized spiny neurons containing D<sub>1</sub> receptors, dynorphin, and substance P (vs D<sub>2</sub> receptors and enkephalin), since their appearance coincided with increased prodynorphin mRNA (Bordet et al., 1997, 2000). However, this finding does not exclude the possibility of some increase in D<sub>3</sub> receptor occurring on SN DA cells for which there is, as yet, no known physiological role (Davila et al., 2003). The clinical implications of the increase (presumably on striatonigral projections) depend on the actual function of the D<sub>3</sub> receptor, still to be determined in mammalian brain, but might be related to a hypersensitive DAergic response to DA stimulation. Thus, studies investigating the effects of D<sub>3</sub> receptor induction find that increased D<sub>3</sub> receptor mRNA parallels the appearance of locomotor sensitization to a DA-elevating challenge (an animal model of addiction), possibly through increased inhibition of GABAergic neurons via stimulation of D<sub>3</sub> receptors in SN pars reticulata (Bordet et al., 1997, 2000; Guillin et al., 2001; Le Foll et al., 2003). Overall, increased D<sub>3</sub> receptor function in areas of the SN, VP, and GP, which receive afferent ventral striatum projections (Haber et al., 2000), could modify the functional

system responsible for the output of the limbic striatum and therefore modulate motivation to use drugs (Sokoloff et al., 2001). Indeed, across MA users, we found a robust relationship between [<sup>11</sup>C]-(+)-PHNO binding in midbrain SN and self-reported drug wanting after a priming dose of amphetamine, suggesting that D<sub>3</sub> receptor activation could contribute to craving (and relapse). The finding is consistent with attenuation of drug seeking, self-administration, and cue- and stress-induced reinstatement after highly selective D<sub>3</sub> receptor antagonists (for review, see Heidbreder et al., 2005), together suggesting that a D<sub>3</sub> receptor increase might contribute to the addicted state in humans.

To summarize, our brain imaging data suggest that the D<sub>3</sub> receptor, unlike the D<sub>2</sub> receptor, might be upregulated in brain of MA users. Preclinical findings suggest that D<sub>3</sub> upregulation might contribute to the addicted state, but pharmacological studies in the human using D<sub>3</sub>-specific antagonists and agonists are needed to establish the clinical significance of our observations.

### References

- Boileau I, Rusjan P, Houle S, Wilkins D, Tong J, Selby P, Guttman M, Saint-Cyr JA, Wilson AA, Kish SJ (2008) Increased vesicular monoamine transporter binding during early abstinence in human methamphetamine users: is VMAT2 a stable dopamine neuron biomarker? *J Neurosci* 28:9850–9856.
- Bordet R, Ridray S, Carboni S, Diaz J, Sokoloff P, Schwartz JC (1997) Induction of dopamine D<sub>3</sub> receptor expression as a mechanism of behavioral sensitization to levodopa. *Proc Natl Acad Sci U S A* 94:3363–3367.
- Bordet R, Ridray S, Schwartz JC, Sokoloff P (2000) Involvement of the direct striatonigral pathway in levodopa-induced sensitization in 6-hydroxydopamine-lesioned rats. *Eur J Neurosci* 12:2117–2123.
- Davila V, Yan Z, Craciun LC, Logothetis D, Sulzer D (2003) D<sub>3</sub> dopamine autoreceptors do not activate G-protein-gated inwardly rectifying potassium channel currents in substantia nigra dopamine neurons. *J Neurosci* 23:5693–5697.
- Eysenck HJ (1953) The application of factor analysis to the study of personality: a reply. *Br J Psychol* 44:169–172.
- First MB, Spitzer RL, Gibbon M, Williams J (1996) Structured clinical interview for DSM-IV Axis I disorders—patient edition (SCID-IP, version 2.0). New York: Biometrics Research Department, New York State Psychiatric Institute.
- Frankel PS, Alburges ME, Bush L, Hanson GR, Kish SJ (2007) Brain levels of neuropeptides in human chronic methamphetamine users. *Neuropharmacology* 53:447–454.
- Frankel PS, Alburges ME, Bush L, Hanson GR, Kish SJ (2008) Striatal and ventral pallidum dynorphin concentrations are markedly increased in human chronic cocaine users. *Neuropharmacology* 55:41–46.
- Graff-Guerrero A, Willeit M, Ginovart N, Mamo D, Mizrahi R, Rusjan P, Vitcu I, Seeman P, Wilson AA, Kapur S (2008) Brain region binding of the D(2/3) agonist [(11)C]-(+)-PHNO and the D(2/3) antagonist [(11)C]raclopride in healthy humans. *Hum Brain Mapp* 29:400–410.
- Graff-Guerrero A, Shammi CM, Uchida H, Kapur S, Mamo D (2009) Age-dependent decline in dopamine D<sub>2</sub> receptors but not D<sub>3</sub> receptors in healthy volunteers: a [11C]-(+)-PHNO and [11C]-raclopride PET study. *Biol Psychiatry Abstr* 64:9S.
- Guillin O, Diaz J, Carroll P, Griffon N, Schwartz JC, Sokoloff P (2001) BDNF controls dopamine D<sub>3</sub> receptor expression and triggers behavioural sensitization. *Nature* 411:86–89.
- Haber SN, Fudge JL, McFarland NR (2000) Striatonigrostriatal pathways in primates form an ascending spiral from the shell to the dorsolateral striatum. *J Neurosci* 20:2369–2382.
- Heidbreder CA, Newman AH (2010) Current perspectives on selective dopamine D(3) receptor antagonists as pharmacotherapeutics for addictions and related disorders. *Ann N Y Acad Sci* 1187:4–34.
- Heidbreder CA, Gardner EL, Xi ZX, Thanos PK, Mugnaini M, Hagan JJ, Ashby CR, Jr (2005) The role of central dopamine D<sub>3</sub> receptors in drug addiction: a review of pharmacological evidence. *Brain Res Brain Res Rev* 49:77–105.
- Kim DJ, Roh S, Kim Y, Yoon SJ, Lee HK, Han CS, Kim YK (2005) High

- concentrations of plasma brain-derived neurotrophic factor in methamphetamine users. *Neurosci Lett* 388:112–115.
- Kish SJ (2008) Pharmacologic mechanisms of crystal meth. *CMAJ* 178:1679–1682.
- Lammertsma AA, Hume SP (1996) Simplified reference tissue model for PET receptor studies. *Neuroimage* 4:153–158.
- Lee B, London ED, Poldrack RA, Farahi J, Nacca A, Monterosso JR, Mumford JA, Bokarius AV, Dahlbom M, Mukherjee J, Bilder RM, Brody AL, Mandelkern MA (2009) Striatal dopamine D<sub>2</sub>/D<sub>3</sub> receptor availability is reduced in methamphetamine dependence and is linked to impulsivity. *J Neurosci* 29:14734–14740.
- Le Foll B, Diaz J, Sokoloff P (2003) Increased dopamine D<sub>3</sub> receptor expression accompanying behavioral sensitization to nicotine in rats. *Synapse* 47:176–183.
- Le Foll B, Goldberg SR, Sokoloff P (2005) The dopamine D<sub>3</sub> receptor and drug dependence: effects on reward or beyond? *Neuropharmacology* 49:525–541.
- Levesque D, Martres MP, Diaz J, Griffon N, Lammers CH, Sokoloff P, Schwartz JC (1995) A paradoxical regulation of the dopamine D<sub>3</sub> receptor expression suggests the involvement of an anterograde factor from dopamine neurons. *Proc Natl Acad Sci U S A* 92:1719–1723.
- Martinez D, Slifstein M, Broft A, Mawlawi O, Hwang DR, Huang Y, Cooper T, Kegeles L, Zarahn E, Abi-Dargham A, Haber SN, Laruelle M (2003) Imaging human mesolimbic dopamine transmission with positron emission tomography. Part II: amphetamine-induced dopamine release in the functional subdivisions of the striatum. *J Cereb Blood Flow Metab* 23:285–300.
- Martinez D, Broft A, Foltin RW, Slifstein M, Hwang DR, Huang Y, Perez A, Frankel WG, Cooper T, Kieber HD, Fischman MW, Laruelle M (2004) Cocaine dependence and D<sub>2</sub> receptor availability in the functional subdivisions of the striatum: relationship with cocaine-seeking behavior. *Neuropharmacology* 29:1190–1202.
- Martinez D, Carpenter KM, Liu F, Slifstein M, Broft A, Friedman AC, Kumar D, Van Heertum R, Kleber HD, Nunes E (2011) Imaging dopamine transmission in cocaine dependence: link between neurochemistry and response to treatment. *Am J Psychiatry* 168:634–641.
- Mash DC (1997) D<sub>3</sub> receptor binding in human brain during cocaine overdose. *Mol Psychiatry* 2:5–6.
- McNair DM, Lorr M, Droppleman L (1971) Manual for the profile of mood states. San Diego, CA: Educational and Industrial Testing Service.
- McNair DM, Lorr M, Droppleman LF, Service EaIT (1992) EITS manual for profile of mood states. San Diego.
- Morissette M, Goulet M, Grondin R, Blanchet P, Bédard PJ, Di Paolo T, Lévesque D (1998) Associative and limbic regions of monkey striatum express high levels of dopamine D<sub>3</sub> receptors: effects of MPTP and dopamine agonist replacement therapies. *Eur J Neurosci* 10:2565.
- Moszczynska A, Fitzmaurice P, Ang L, Kalasinsky KS, Schmunk GA, Peretti FJ, Aiken SS, Wickham DJ, Kish SJ (2004) Why is parkinsonism not a feature of human methamphetamine users? *Brain* 127:363–370.
- Murray AM, Ryoo HL, Gurevich E, Joyce JN (1994) Localization of dopamine D<sub>3</sub> receptors to mesolimbic and D<sub>2</sub> receptors to mesostriatal regions of human forebrain. *Proc Natl Acad Sci U S A* 91:11271–11275.
- Quik M, Police S, He L, Di Monte DA, Langston JW (2000) Expression of D(3) receptor messenger RNA and binding sites in monkey striatum and substantia nigra after nigrostriatal degeneration: effect of levodopa treatment. *Neuroscience* 98:263–273.
- Richtand NM, Goldsmith RJ, Nolan JE, Berger SP (2001) The D<sub>3</sub> dopamine receptor and substance dependence. *J Addict Dis* 20:19–32.
- Rinne JO, Hietala J, Ruotsalainen U, Säkö E, Laihinien A, Nägren K, Lehtikoinen P, Oikonen V, Syvälahti E (1993) Decrease in human striatal dopamine D<sub>2</sub> receptor density with age: a PET study with [<sup>11</sup>C]raclopride. *J Cereb Blood Flow Metab* 13:310–314.
- Robinson TE, Berridge KC (1993) The neural basis of drug craving: an incentive-sensitization theory of addiction. *Brain Res Brain Res Rev* 18:247–291.
- Rusjan P (2008) Kinetics of [<sup>11</sup>C]-(+)-PHNO binding in the globus pallidus. *Neuroimage* 41:T137.
- Rusjan P, Mamo D, Ginovart N, Hussey D, Vitcu I, Yasuno F, Tetsuya S, Houle S, Kapur S (2006) An automated method for the extraction of regional data from PET images. *Psychiatry Res* 147:79–89.
- Searle G, Beaver JD, Comley RA, Bani M, Tziortzi A, Slifstein M, Mugnaini M, Griffante C, Wilson AA, Merlo-Pich E, Houle S, Gunn R, Rabiner EA, Laruelle M (2010) Imaging dopamine D(3) receptors in the human brain with positron emission tomography, [(11)C]PHNO, and a selective D(3) receptor antagonist. *Biol Psychiatry* 68:392–399.
- Segal DM, Moraes CT, Mash DC (1997) Up-regulation of D<sub>3</sub> dopamine receptor mRNA in the nucleus accumbens of human cocaine fatalities. *Brain Res Mol Brain Res* 45:335–339.
- Shotbolt P, Tziortzi AC, Searle GE, Colasanti A, van der Aart J, Abanades S, Plisson C, Miller SR, Huiban M, Beaver JD, Gunn RN, Laruelle M, Rabiner EA (2012) Within-subject comparison of [(11)C]-(+)-PHNO and [(11)C]raclopride sensitivity to acute amphetamine challenge in healthy humans. *J Cereb Blood Flow Metab* 32:127–136.
- Sokoloff P, Giros B, Martres MP, Bouthenet ML, Schwartz JC (1990) Molecular cloning and characterization of a novel dopamine receptor (D<sub>3</sub>) as a target for neuroleptics. *Nature* 347:146–151.
- Sokoloff P, Le Foll B, Perachon S, Bordet R, Ridray S, Schwartz JC (2001) The dopamine D<sub>3</sub> receptor and drug addiction. *Neurotox Res* 3:433–441.
- Staley JK, Mash DC (1996) Adaptive increase in D<sub>3</sub> dopamine receptors in the brain reward circuits of human cocaine fatalities. *J Neurosci* 16:6100–6106.
- Tziortzi AC, Searle GE, Tzimopoulou S, Salinas C, Beaver JD, Jenkinson M, Laruelle M, Rabiner EA, Gunn RN (2011) Imaging dopamine receptors in humans with [<sup>11</sup>C]-(+)-PHNO: dissection of D<sub>3</sub> signal and anatomy. *Neuroimage* 54:264–277.
- Volkow ND, Wang GJ, Fowler JS, Logan J, Gatley SJ, Gifford A, Hitzemann R, Ding YS, Pappas N (1999) Prediction of reinforcing responses to psychostimulants in humans by brain dopamine D<sub>2</sub> receptor levels. *Am J Psychiatry* 156:1440–1443.
- Volkow ND, Chang L, Wang GJ, Fowler JS, Ding YS, Sedler M, Logan J, Franceschi D, Gatley J, Hitzemann R, Gifford A, Wong C, Pappas N (2001) Low level of brain dopamine D<sub>2</sub> receptors in methamphetamine abusers: association with metabolism in orbitofrontal cortex. *Am J Psychiatry* 158:2015–2021.
- Volkow ND, Fowler JS, Wang GJ, Baler R, Telang F (2009) Imaging dopamine's role in drug abuse and addiction. *Neuropharmacology* 56 [Suppl 1]:3–8.
- Wang GJ, Smith L, Volkow ND, Telang F, Logan J, Tomasi D, Wong CT, Hoffman W, Jayne M, Alia-Klein N, Thanos P, Fowler JS (2011) Decreased dopamine activity predicts relapse in methamphetamine abusers. *Mol Psychiatry*. Advance online publication. Retrieved July 12, 2011. doi: 10.1038/mp.2011.86
- Willeit M, Ginovart N, Graff A, Rusjan P, Vitcu I, Houle S, Seeman P, Wilson AA, Kapur S (2008) First human evidence of d-amphetamine induced displacement of a D<sub>2/3</sub> agonist radioligand: a [<sup>11</sup>C]-(+)-PHNO positron emission tomography study. *Neuropsychopharmacology* 33:279–289.
- Wilson AA, McCormick P, Kapur S, Willeit M, Garcia A, Hussey D, Houle S, Seeman P, Ginovart N (2005) Radiosynthesis and evaluation of [<sup>11</sup>C]-(+)-4-propyl-3,4,4a,5,6,10b-hexahydro-2H-naphtho[1,2-b][1,4]oxazin-9-ol as a potential radiotracer for in vivo imaging of the dopamine D<sub>2</sub> high-affinity state with positron emission tomography. *J Med Chem* 48:4153–4160.
- Wilson JM, Kalasinsky KS, Levey AI, Bergeron C, Reiber G, Anthony RM, Schmunk GA, Shannak K, Haycock JW, Kish SJ (1996) Striatal dopamine nerve terminal markers in human, chronic methamphetamine users. *Nat Med* 2:699–703.