

RESEARCH

Open Access

HLA-A*0201-restricted CD8⁺ T-cell epitopes identified in dengue viruses

Zhi-Liang Duan^{1,2†}, Qiang Li^{1,3†}, Zhi-Bin Wang¹, Ke-Dong Xia¹, Jiang-Long Guo¹, Wen-Quan Liu¹ and Jin-Sheng Wen^{1*}

Abstract

Background: All four dengue virus (DV) serotypes (D1V, D2V, D3V and D4V) can cause a series of disorders, ranging from mild dengue fever (DF) to severe dengue hemorrhagic fever and dengue shock syndrome (DHF/DSS). Previous studies have revealed that DV serotype-specific CD8⁺ T cells are involved in controlling DV infection. Serotype cross-reactive CD8⁺ T-cells may contribute to the immunopathogenesis of DHF/DSS. The aim of the study was to identify HLA-A*0201-binding peptides from four DV serotypes. We then examined their immunogenicity *in vivo* and cross-reactivity within heterologous peptides.

Methods: D1V-derived candidate CD8⁺ T-cell epitopes were synthesized and evaluated for their affinity to the HLA-A*0201 molecule. Variant peptides representing heterologous D2V, D3V, D4V serotypes were synthesized. The immunogenicity of the high-affinity peptides were evaluated in HLA-A*0201 transgenic mice.

Results: Of the seven D1V-derived candidate epitopes [D1V-NS4a₅₆₋₆₄(MLLALIAVL), D1V-C₄₆₋₅₄(LVMAFMAFL), D1V-NS4b₅₆₂₋₅₇₀(LLATSIFKL), D1V-NS2a₁₆₉₋₁₇₇(AMVLSIVSL), D1V-NS4a₁₄₀₋₁₄₈(GLLFMILTV), D1V-NS2a₁₄₄₋₁₅₂(QLWAALLSL) and D1V-NS4b₁₈₃₋₁₉₁(LLMRTTWAL)], three peptides [D1V-NS4a₁₄₀₋₁₄₈, D1V-NS2a₁₄₄₋₁₅₂ and D1V-NS4b₁₈₃₋₁₉₁] had a high affinity for HLA-A*0201 molecules. Moreover, their variant peptides for D2V, D3V and D4V [D2V-NS4a₁₄₀₋₁₄₈(AILTVAAT), D3V-NS4a₁₄₀₋₁₄₈(GILTAAIV), D4V-NS4a₁₄₀₋₁₄₈(TILTIIGLI), D2V-NS2a₁₄₄₋₁₅₂(QLAVTIMAI), D3V-NS2a₁₄₄₋₁₅₂(QLWTALVSL), D4V-NS2a₁₄₃₋₁₅₁(QVGTALSL), D2V-NS4b₁₈₂₋₁₉₀(LMMRTTWAL), D3V-NS4b₁₈₂₋₁₉₀(LLMRTSWAL) and D4V-NS4b₁₇₉₋₁₈₇(LLMRTTWAF)] also had a high affinity for HLA-A*0201 molecules. Furthermore, CD8⁺ T cells directed to these twelve peptides were induced in HLA-A*0201 transgenic mice following immunization with these peptides. Additionally, cross-reactivity within four peptides (D1V-NS4b₁₈₃₋₁₉₁, D2V-NS4b₁₈₂₋₁₉₀, D3V-NS4b₁₈₂₋₁₉₀ and D4V-NS4b₁₇₉₋₁₈₇) was observed.

Conclusions: Two novel serotype-specific HLA-A*0201-restricted CD8⁺ T-cell epitopes (NS4a₁₄₀₋₁₄₈ and NS2a₁₄₄₋₁₅₂) and one cross-reactive HLA-A*0201-restricted CD8⁺ T-cell epitopes which is similar to a previously identified epitope were identified in D1V-D4V. Combining prediction algorithms and HLA transgenic mice is an effective strategy to identify HLA-restricted epitopes. Serotype-specific epitopes would be used to determine the protective role of serotype-specific CD8⁺ T cells, while cross-reactive epitopes may provide assistance in exploring the role of serotype cross-reactive CD8⁺ T cells in the immunopathogenesis of DHF/DSS.

Keywords: Dengue virus, CD8⁺ T-cell epitope, Immunogenicity

* Correspondence: jshwen78@yahoo.com.cn

†Equal contributors

¹Department of Microbiology and Immunology, Wenzhou Medical College, Wenzhou, China

Full list of author information is available at the end of the article

Background

Dengue virus (DV) is a single-stranded positive-sense RNA virus, of which there are four serotypes (D1V, D2V, D3V and D4V). The viral genome encodes three structural proteins (C, M and E) and seven non-structural proteins (NS1, NS2a, NS2b, NS3, NS4a, NS4b and NS5). DV is known to cause a spectrum of illnesses, ranging from mild dengue fever (DF) to severe dengue hemorrhagic fever and dengue shock syndrome (DHF/DSS). Currently, DF and DHF/DSS are major global public health problems. It is estimated that 50,000,000–100,000,000 cases of DF and 250,000–500,000 cases of DHF/DSS occur every year worldwide [1].

Despite several decades of research, there are no effective and safe DV vaccines. Previous studies have shown that preexisting DV non-neutralizing antibodies can enhance secondary heterologous DV serotype infections *via* antibody-dependent enhancement (ADE). ADE may be the mechanism for development of DHF/DSS during secondary heterologous DV serotype infections [2-4]. It has been shown that infection with any one DV serotype provides the body with protective immunity against homologous DV serotypes, and with transient cross-protection against heterologous DV serotypes [5]. The majority of studies have demonstrated that interferon gamma (IFN- γ) plays an important role in the clearance of DV following infection [6,7]. Subsequent studies have indicated that DV-specific CD8⁺ T cells display lytic activity and/or produce IFN- γ [8,9]. A recent study in mice confirmed that DV-specific CD8⁺ T cells play a crucial role in controlling DV replication and infection by secreting IFN- γ [10]. Thus, DV-specific CD8⁺ IFN- γ ⁺ T cells may be critical for controlling DV infection. However, growing evidence suggests that a DV serotype infection generates not only serotype-specific T cells, but also serotype cross-reactive T cells which can recognize multiple heterologous DV serotypes [9,11-15]. At present, it is accepted that DV serotype-specific T cells provide protective immunity, while serotype cross-reactive T cells induced by primary DV serotype infection are believed to mediate the immunopathogenesis of DHF/DSS during secondary heterologous DV serotype infection [8,16-18].

Because of the important role of serotype-specific CD8⁺ T cells in limiting DV infection, a new strategy for developing prophylactic and therapeutic CD8⁺ T-cell epitope-based vaccines is needed. To avoid the side effect of serotype cross-reactive CD8⁺ T cells, a dengue vaccine must be a tetravalent vaccine that is capable of providing protection against infection by all four DV serotypes simultaneously [19]. Tetravalent CD8⁺ T-cell epitope-based vaccines, which are mixtures of multiple heterologous variant CD8⁺ T-cell

epitopes, could be promising candidate vaccines. Although many DV-specific CD8⁺ T-cell epitopes have been identified [9,11,12,17,20-23], the numbers of HLA-A*0201-restricted epitopes are limited, despite the high frequency of the HLA-A*0201 molecule in most populations.

In the present study, we sought to screen the amino acid sequences of D1V and used computational algorithms to predict potential HLA-A*0201-restricted CD8⁺ T-cell epitopes. Candidate CD8⁺ T-cell epitopes and their variant peptides in D2V, D3V, D4V were tested for their affinity to the HLA-A*0201 molecule, and for their capacity to induce CD8⁺ T-cell responses in HLA-A*0201 transgenic mice.

Results

Affinity of candidate CD8⁺ T-cell epitopes for HLA-A*0201

Seven D1V-derived candidate epitopes [D1V-NS4a₅₆₋₆₄ (MLLALIAVL), D1V-C₄₆₋₅₄ (LVMAFMAFL), D1V-NS4b₅₆₂₋₅₇₀ (LLATSIFKL), D1V-NS2a₁₆₉₋₁₇₇ (AMVLSIVSL), D1V-NS4a₁₄₀₋₁₄₈ (GLLFMILTV), D1V-NS2a₁₄₄₋₁₅₂ (QLWAALLSL) and D1V-NS4b₁₈₃₋₁₉₁ (LLMRTTWAL)] were synthesized. BLAST results showed that these peptides are highly conserved in more than 100 D1V strains (data not shown). MHC-peptide complex stabilization assay results indicated that three peptides (D1V-NS4a₁₄₀₋₁₄₈, D1V-NS2a₁₄₄₋₁₅₂ and D1V-NS4b₁₈₃₋₁₉₁) showed peptide dose-dependent HLA-A*0201-peptide binding [fluorescence index (FI) exceeds 1 at a peptide concentration of 100 μ g/ml], while the other peptides demonstrated weak binding to HLA-A*0201 (FI < 1; Table 1 and Figure 1). According to the sequences for D1V-NS4a₁₄₀₋₁₄₈, D1V-NS2a₁₄₄₋₁₅₂ and D1V-NS4b₁₈₃₋₁₉₁, nine variant peptides derived from D2V, D3V and D4V [D2V-NS4a₁₄₀₋₁₄₈ (AILTVVAAT), D3V-NS4a₁₄₀₋₁₄₈ (GILTAAIV), D4V-NS4a₁₄₀₋₁₄₈ (TILTIIGLI), D2V-NS2a₁₄₄₋₁₅₂ (QLAVTIMAI), D3V-NS2a₁₄₄₋₁₅₂ (QLWTALVSL), D4V-NS2a₁₄₃₋₁₅₁ (QVGTLLALS), D2V-NS4b₁₈₂₋₁₉₀ (LLMRTTWAL), D3V-NS4b₁₈₂₋₁₉₀ (LLMRTSWAL), D4V-NS4b₁₇₉₋₁₈₇ (LLMRTTWAF)] were selected for synthesis. BLAST results revealed that each of the nine peptides are highly conserved in more than 80 given serotype strains (data not shown). The variant sequences for D1V-NS4a₁₄₀₋₁₄₈ and D1V-NS2a₁₄₄₋₁₅₂ in D2V, D3V and D4V are highly variable. However, D2V-NS4b₁₈₂₋₁₉₀, D3V-NS4b₁₈₂₋₁₉₀ and D4V-NS4b₁₇₉₋₁₈₇ all differ from D1V-NS4b₁₈₃₋₁₉₁ by a single amino acid. Regardless of the amino acid variation, almost all nine variant peptides bound to the HLA-A*0201 molecule with high affinity (for D4V-NS2a₁₄₃₋₁₅₁, the FI is 0.8). In total, twelve peptides (D1V-NS4a₁₄₀₋₁₄₈, D2V-NS4a₁₄₀₋₁₄₈, D3V-NS4a₁₄₀₋₁₄₈, D4V-NS4a₁₄₀₋₁₄₈, D1V-NS2a₁₄₄₋₁₅₂, D2V-NS2a₁₄₄₋₁₅₂, D3V-NS2a₁₄₄₋₁₅₂, D4V-NS2a₁₄₃₋₁₅₁, D1V-NS4b₁₈₃₋₁₉₁, D2V-NS4b₁₈₂₋₁₉₀, D3V-NS4b₁₈₂₋₁₉₀ and D4V-NS4b₁₇₉₋₁₈₇) had a high affinity for HLA-A*0201 (Table 1 and Figure 1).

Table 1 Candidate epitopes and their affinity for HLA-A*0201 molecule of T2 cells

Peptides	Serotypes	Position ^a	Sequences ^b	Score ^c	FI ^d			ELISPOT SFCs/1×10 ⁵ cells	ICS (%) ^e CD8 ⁺ IFN-γ ⁺ T cells
					1 μg	10 μg	100 μg		
D1V-NS4a ₅₆₋₆₄	D1V	NS4a (56-64)	MLLALIAVL	29	0.05	0.05	0.08		
D1V-C ₄₆₋₅₄	D1V	C (46-54)	LVMAFMAFL	20	0.01	0.02	0.02		
D1V-NS4b ₅₆₂₋₅₇₀	D1V	NS4b (562-570)	LLATSIFKL	30	0.01	0.05	0.05		
D1V-NS2a ₁₆₉₋₁₇₇	D1V	NS2a (169-177)	AMVLSIVSL	28	0.03	0.05	0.04		
D1V-NS4a ₁₄₀₋₁₄₈	D1V	NS4a (140-148)	GLLFMLTV	30	0.28	0.85	4.5	58 ± 8	0.71 ± 0.11
D2V-NS4a ₁₄₀₋₁₄₈	D2V	NS4a (140-148)	AILTVAAT	23	0.1	0.2	1.2	10 ± 3	0.12 ± 0.05
D3V-NS4a ₁₄₀₋₁₄₈	D3V	NS4a (140-148)	GILTAAIV	24	0.1	0.15	4.05	37 ± 6	0.37 ± 0.08
D4V-NS4a ₁₄₀₋₁₄₈	D4V	NS4a (140-148)	TILTIGLI	22	0.15	0.3	1.08	17 ± 5	0.21 ± 0.05
D1V-NS2a ₁₄₄₋₁₅₂	D1V	NS2a (144-152)	QLWAALLSL	28	0.05	0.22	1.12	36 ± 6	0.41 ± 0.07
D2V-NS2a ₁₄₄₋₁₅₂	D2V	NS2a (144-152)	QLAVTIMAI	25	0.24	0.39	3.85	21 ± 3	0.21 ± 0.05
D3V-NS2a ₁₄₄₋₁₅₂	D3V	NS2a (144-152)	QLWTALVSL	29	0.2	0.45	2.6	62 ± 9	0.79 ± 0.15
D4V-NS2a ₁₄₃₋₁₅₁	D4V	NS2a (143-151)	QVGTALSL	18	0.22	0.2	0.8	12 ± 3	0.13 ± 0.06
D1V-NS4b ₁₈₃₋₁₉₁	D1V	NS4b (183-191)	LLMRTTWAL	26	0.29	0.4	1.95	42 ± 7	0.44 ± 0.09
D2V-NS4b ₁₈₂₋₁₉₀	D2V	NS4b (182-190)	LLMRTTWAL	24	0.58	3.42	4.8	37 ± 5	0.37 ± 0.09
D3V-NS4b ₁₈₂₋₁₉₀	D3V	NS4b (182-190)	LLMRTSWAL	24	0.22	0.65	3.6	24 ± 5	0.27 ± 0.07
D4V-NS4b ₁₇₉₋₁₈₇	D4V	NS4b (179-187)	LLMRTTWAF	16	0.2	0.59	4.4	22 ± 4	0.16 ± 0.06

^a Position was determined according to the indicated DV serotype.

^b Altered peptides representing heterologous DV serotypes. Bolded letters indicate the variant amino acid.

^c Score predicted by online prediction algorithms SYFPEITHI.

^d FI = [Mean fluorescence intensity(MFI) sample-MFI background]/MFI background.

^e The proportion of CD8⁺IFN-γ⁺T cells in CD8⁺Tcells.

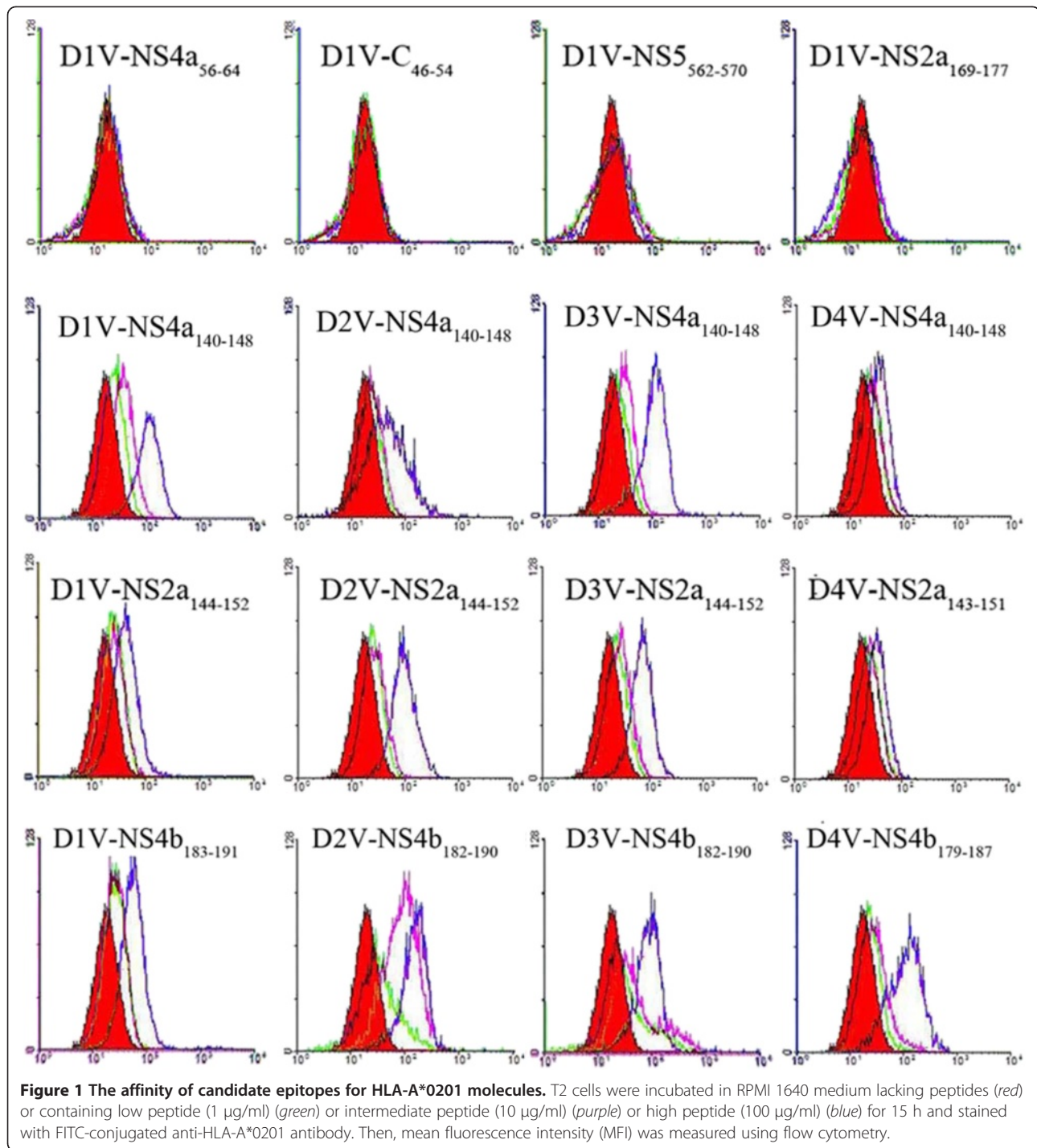
Induction of peptide-specific CD8⁺ T cells in HLA-A*0201 transgenic mice

To evaluate the immunogenicity of high-affinity peptides, splenocytes isolated from HLA-A*0201 transgenic mice immunized with peptide were stimulated with a cognate peptide. Enzyme-linked immunospot (ELISPOT) and intracellular cytokine staining (ICS) assays were used to detect homologous peptide-specific CD8⁺ T cells. ELISPOT results revealed that immunized HLA-A*0201 transgenic mice had high levels of peptide-specific IFN-γ spot-forming cells (SFCs) in splenocytes. All peptides evoked an IFN-γ response in the ELISPOT assay that exceeded 10 SFCs/1 × 10⁵ splenocytes. D3V-NS2a₁₄₄₋₁₅₂ immunization resulted in the highest frequency of IFN-γ-secreting cells (62 ± 9 SFCs/1 × 10⁵ splenocytes), while D2V-NS4a₁₄₀₋₁₄₈ immunization showed the lowest frequency of IFN-γ-secreting cells (10 ± 3 SFCs/1 × 10⁵ splenocytes). As for D1V-NS4a₁₄₀₋₁₄₈ and its variant peptides, with the increase of FI, higher level of peptide-specific IFN-γ-secreting cells was induced. In contrast, for D2V-NS2a₁₄₄₋₁₅₂, D1V-NS4b₁₈₃₋₁₉₁ and their variant peptides, the frequencies of peptide-specific IFN-γ-secreting cells were not proportional to peptides' FIs. For example, the FIs of D1V-NS4a₁₄₀₋₁₄₈ and D3V-NS4a₁₄₀₋₁₄₈ were 4.5 and 4.05, respectively. These two peptides all induced higher level of IFN-γ-secreting cells (58 ± 8 SFCs and 37 ± 6 SFCs, respectively). Although D2V-NS2a₁₄₄₋₁₅₂ and D4V-NS4b₁₇₉₋₁₈₇ had higher FIs, they just induced median level

of IFN-γ-secreting cells (21±3 SFCs and 22±4 SFCs, respectively). A summary of the individual peptides that evoked responses in IFN-γ ELISPOT assays is provided in Table 1 and Figures 2, 3, and 4. The ICS results defined the phenotype of peptide-specific IFN-γ-secreting T cells, and confirmed the human leukocyte antigen (HLA) restriction of these peptides. The high frequencies of CD8⁺ IFN-γ⁺ T cells were detected in splenocytes after being stimulated with cognate peptide. The highest percentage of CD8⁺ IFN-γ⁺ T cells was specific for D3V-NS2a₁₄₄₋₁₅₂ (0.79 ± 0.15%). The lowest percentage of CD8⁺ IFN-γ⁺ T cells was directed against D2V-NS4a₁₄₀₋₁₄₈ (0.12 ± 0.05%; Table 1, Figures 5, 6, and 7). The ELISPOT results were consistent with the ICS results. Additionally, these peptides were tested in an IFN-γ ELISPOT assay and an ICS assay using splenocytes from mock-immunized HLA-A*0201 transgenic mice. They were also tested using splenocytes from peptide-immunized C57BL/6 mice. Significant responses were not observed in either of these situations (data not shown).

Cross-reactivity of peptide-specific CD8⁺ T cells

To further explore the cross-reactivity between a given peptide and its variants, we examined the ability of peptide-specific CD8⁺ T cells to recognize a heterologous peptide variant representing another DV serotype. Splenocytes from D1V-NS4b₁₈₃₋₁₉₁-immunized mice exhibited marked cross-reactivity towards D2V-NS4b₁₈₂₋



¹⁹⁰, D3V-NS4b₁₈₂₋₁₉₀ and D4V-NS4b₁₇₉₋₁₈₇. Similar data were obtained for D2V-NS4b₁₈₂₋₁₉₀, D3V-NS4b₁₈₂₋₁₉₀ and D4V-NS4b₁₇₉₋₁₈₇ (Figures 4 and 7). The proportion of CD8⁺ IFN-γ⁺ T cells responding to all four peptides ranged from 0.16–0.44%. For D1V-NS4b₁₈₃₋₁₉₁ and D2V-NS4b₁₈₂₋₁₉₀, the same variant peptides induced the highest CD8⁺ T-cell response in all peptide-immunized mice. In total, higher responses to homologous peptides

were more common than responses to variant peptides. For the remaining eight peptides, stimulation of splenocytes with their corresponding variants did not give rise to CD8⁺ IFN-γ⁺ T cells.

Discussion

Both our previous reports and other studies indicate that combining prediction algorithms with several

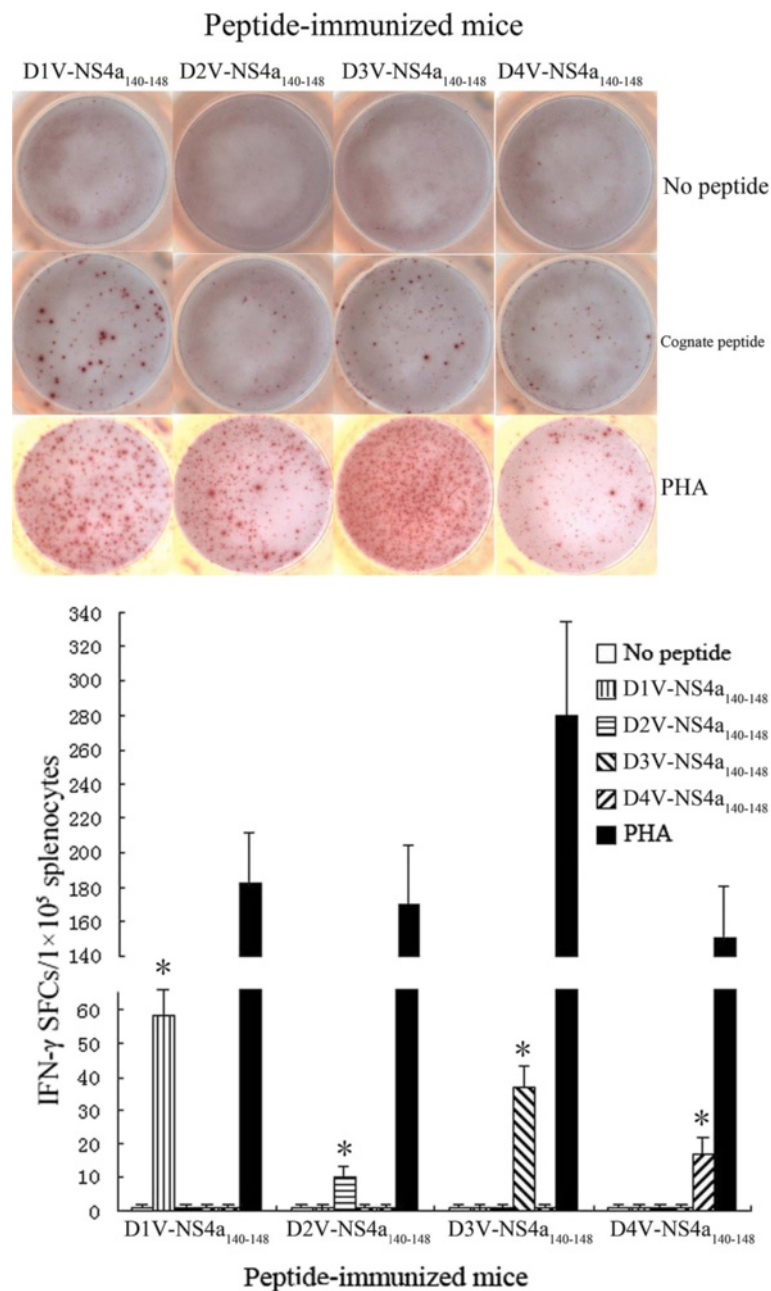


Figure 2 Magnitude of the ELISPOT response to D1V-NS4a₁₄₀₋₁₄₈ and heterologous peptides in HLA-A*0201 transgenic mice immunized with peptides. Splenocytes were isolated from the peptide-immunized mice and were stimulated *in vitro* with cognate peptide or heterologous peptide. The numbers of IFN-γ SFCs/1 × 10⁵ splenocytes were detected using ELISPOT assay. *Indicating the positive response to a peptide.

in vitro and/or *in vivo* assays could hasten the identification of immunogenic T-cell epitopes [21,24]. It is established that HLA-A*0201 is the major haplotype in most of the world population, irrespective of gender and race [25]. Therefore, HLA-A*0201-restricted CD8⁺ T-cell epitopes would likely have broad population coverage.

In the present study, seven D1V-derived potential HLA-A*0201-restricted candidate epitopes were evaluated for their binding capacity to HLA-A*0201. Three peptides were identified as high-affinity peptides. Almost all variants of these three peptides in D2V, D3V, D4V have a high affinity for HLA-A*0201. In total, twelve peptides demonstrated a high affinity for HLA-A*0201.

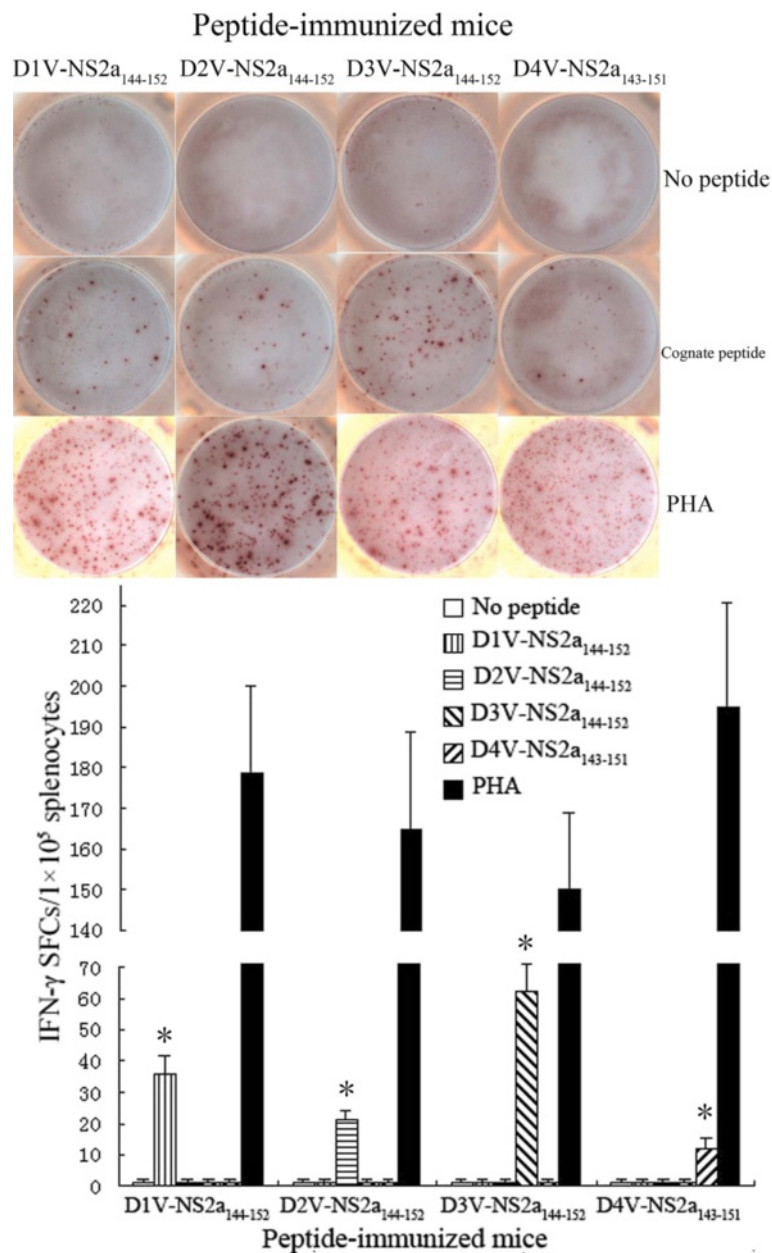


Figure 3 Magnitude of the ELISPOT response to D1V-NS2a₁₄₄₋₁₅₂ and heterologous peptides in HLA-A*0201 transgenic mice immunized with peptides. Splenocytes were isolated from the peptide-immunized mice and were stimulated *in vitro* with cognate peptide or heterologous peptide. The numbers of IFN-γ SFCs/1 × 10⁵ splenocytes were detected using ELISPOT assay. *Indicating the positive response to a peptide.

Classic HLA-A*0201-restricted epitopes have an L or I amino acid residue at position 2, and an L, I or V residue at position 9. Among sixteen candidate epitopes described here, D1V-NS4a₁₄₀₋₁₄₈, D3V-NS4a₁₄₀₋₁₄₈, D4V-NS4a₁₄₀₋₁₄₈, D1V-NS2a₁₄₄₋₁₅₂, D2V-NS2a₁₄₄₋₁₅₂, D3V-NS2a₁₄₄₋₁₅₂, D1V-NS4b₁₈₃₋₁₉₁ and D3V-NS4b₁₈₂₋₁₉₀ followed this classic

pattern. They also showed a high affinity for HLA-A*0201 (FI > 1). D1V-NS4a₅₆₋₆₄ and D1V-NS4b₅₆₂₋₅₇₀ had a low-affinity for HLA-A*0201, even though they shared these classic residues at the relevant positions (FI < 0.5). In contrast, although neither D2V-NS4b₁₈₂₋₁₉₀ (position 2 is M) nor D4V-NS4b₁₇₉₋₁₈₇ (position 9 is F) conformed

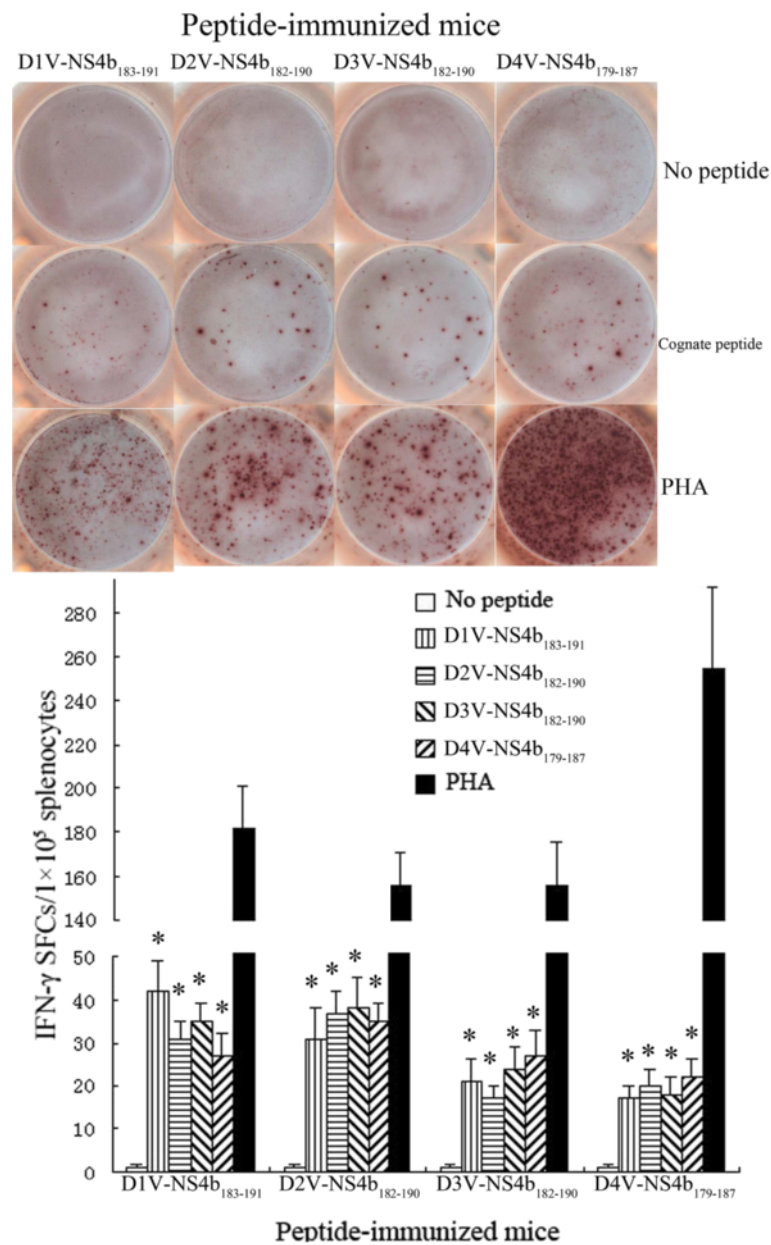


Figure 4 Magnitude of the ELISPOT response to D1V-NS4b₁₈₃₋₁₉₁ and heterologous peptides in HLA-A*0201 transgenic mice immunized with peptides.

Splenocytes were isolated from the peptide-immunized mice and were stimulated *in vitro* with cognate peptide or heterologous peptide. The numbers of IFN-γ SFCs/1 × 10⁵ splenocytes were detected using ELISPOT assay. *Indicating the positive response to a peptide.

to the classic pattern, these peptides had a high affinity for HLA-A*0201 (FI > 4). A possible explanation for these phenomena may be that amino acids in other positions drastically affect binding avidity.

To further evaluate the immunogenicity and HLA allele restriction of these high-affinity peptides, we assessed whether these twelve peptides could elicit CD8⁺ T-cell

responses in HLA-A*0201 transgenic mice. Although these twelve peptides had different affinities for HLA-A*0201, they all triggered peptide-specific CD8⁺ T cell responses. The magnitude of responses to individual peptides ranged from 10–62 SFCs/1 × 10⁵ splenocytes. Our results appear to correspond with those seen in other studies. The frequencies of CD8⁺ IFN-γ⁺ T cells that

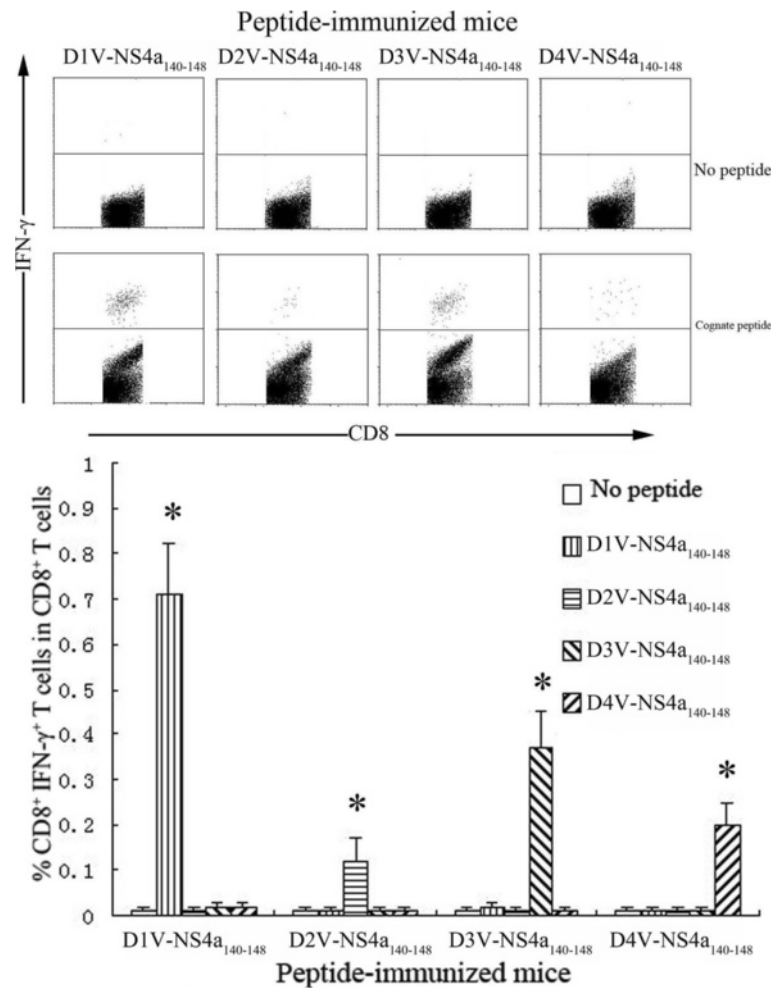


Figure 5 Detection of peptide-specific CD8⁺ IFN- γ ⁺ T cells in HLA-A*0201 transgenic mice immunized with D1V-NS4a₁₄₀₋₁₄₈ or heterologous peptides. Splenocytes were isolated from the peptide-immunized mice and were stimulated *in vitro* with cognate peptide or heterologous peptide. The percentages of CD8⁺ IFN- γ ⁺ T cells in CD8⁺ T cells were measured using ICS assay. *Indicating the positive response to a peptide.

respond to cognate peptides in splenocytes of HLA-A*0201 transgenic mice (0.12–0.79% CD8⁺ IFN- γ ⁺ T cells of all CD3⁺ CD8⁺ T cells) is in line with frequencies detected in humanized mice (0.1–2.8% of all CD3⁺ CD8⁺ T cells) [26,27], and in human peripheral blood mononuclear cells (PBMCs) from DV immune donors (0.1–0.68% of all CD3⁺ CD8⁺ T cells) [12,21]. These peptides did not induce significant CD8⁺ T-cell responses in mock-immunized HLA-A*0201 transgenic or C57BL/6 mice (data not shown). These data further confirmed that these twelve peptides were recognized by HLA-A*0201.

Additionally, a high frequency of D1V-NS4a₁₄₀₋₁₄₈ and D3V-NS2a₁₄₄₋₁₅₂-specific CD8⁺ T cells in peptide-immunized HLA-A*0201 transgenic mice suggests that these peptides might be the immunodominant HLA-A*0201-restricted epitopes. In recent years, research studies have revealed many DV-specific CD8⁺ T-cell epitopes.

These are mostly located in E, NS3, NS4a, NS4b, NS5 and restricted by HLA-A2, A11, A24, B7, B55, B65 [9,11,12,17,20-23]. Lund et al [22] and Weiskopf et al [23] used HLA-A*0201 transgenic mice and identified several D1V- and D2V-specific HLA-A*0201-restricted epitopes, respectively. Weiskopf et al [23] also found that most of the epitopes identified in the murine system are also recognized by PBMCs from DV-exposed human donors. In the present study, based on a similar strategy, we identified NS2a-, NS4a- and NS4b-derived HLA-A*0201-restricted CD8⁺ T-cell epitopes from D1V–D4V. Our results suggest that NS2a, NS4a and NS4b are involved in cellular immunity during DV infection.

Previous studies have shown that DV-specific CD8⁺ T cells from DV-immunized or infected subjects exhibited a cross-reactive response to variant peptides representing a heterologous serotype [9,12,15]. In this study, for D1V-NS4b₁₈₃₋₁₉₁

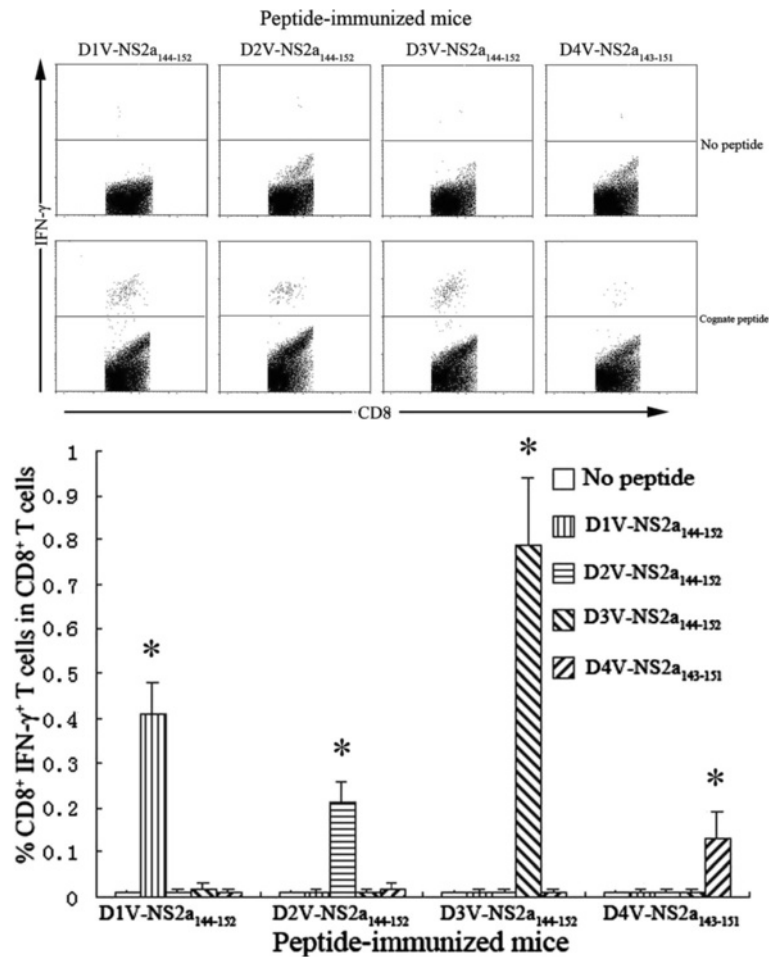


Figure 6 Detection of peptide-specific CD8⁺ IFN- γ ⁺ T cells in HLA-A*0201 transgenic mice immunized with D1V-NS2a₁₄₄₋₁₅₂ or heterologous peptides. Splenocytes were isolated from peptide-immunized mice and were stimulated *in vitro* with cognate peptide or heterologous peptide. The percentages of CD8⁺ IFN- γ ⁺ T cells in CD8⁺ T cells were measured using ICS assay. *Indicating the positive response to a peptide.

and its variant peptides (D2V-NS4b₁₈₂₋₁₉₀, D3V-NS4b₁₈₂₋₁₉₀ and D4V-NS4b₁₇₉₋₁₈₇) each elicited peptide-specific CD8⁺ T cells, which exhibited cross-reactivity towards its variants. These data suggest that D1V infection followed by D2V, D3V or D4V infection (or vice versa) would trigger the activation of cross-reactive IFN- γ -producing CD8⁺ T cells. Cross-reactivity may be explained by the primary structure of these variants: D2V-NS4b₁₈₂₋₁₉₀(LMMRTT^WAL), D3V-NS4b₁₈₂₋₁₉₀(LLMRT^WSWAL), and D4V-NS4b₁₇₉₋₁₈₇(LLMRT^WAF). Each of these differs from D1V-NS4b₁₈₃₋₁₉₁(LLMRT^WT^WAL) by a single amino acid. D1V-NS4b₁₈₃₋₁₉₁ and D3V-NS4b₁₈₂₋₁₉₀ shared the same anchors at positions 2 (L) and 9 (L). These are critical positions for HLA recognition and T-cell activation. These two peptides have only one amino acid change at position 6 (T→S). For D2V-NS4b₁₈₂₋

190 and D4V-NS4b₁₇₉₋₁₈₇, the residues at positions 2 or 9 differ from D1V-NS4b₁₈₃₋₁₉₁ and D3V-NS4b₁₈₂₋₁₉₀. We believe that the amino acid change will not affect functional avidity (IFN- γ secretion). In a recent study using HLA-A*0201-positive D1V/D2V/D3V-immune donors, Bashyam et al [12] reported four cross-reactive epitopes (D1V-ILLMRT^WTWA, D2V-VLLMRT^WTWA, D3V-LLL^WMRT^WSWA and D4V-LLL^WMRT^WTWA). In comparison, we found those epitopes along with the ones reported in this paper to share 7 or 8 amino acids. We are confident that the shared amino acid sequences may determine HLA-A*0201 restriction and T cell recognition.

Conclusions

In summary, based on the amino acid sequences of D1V-D4V, we identified two novel serotype-specific HLA-A*0201-

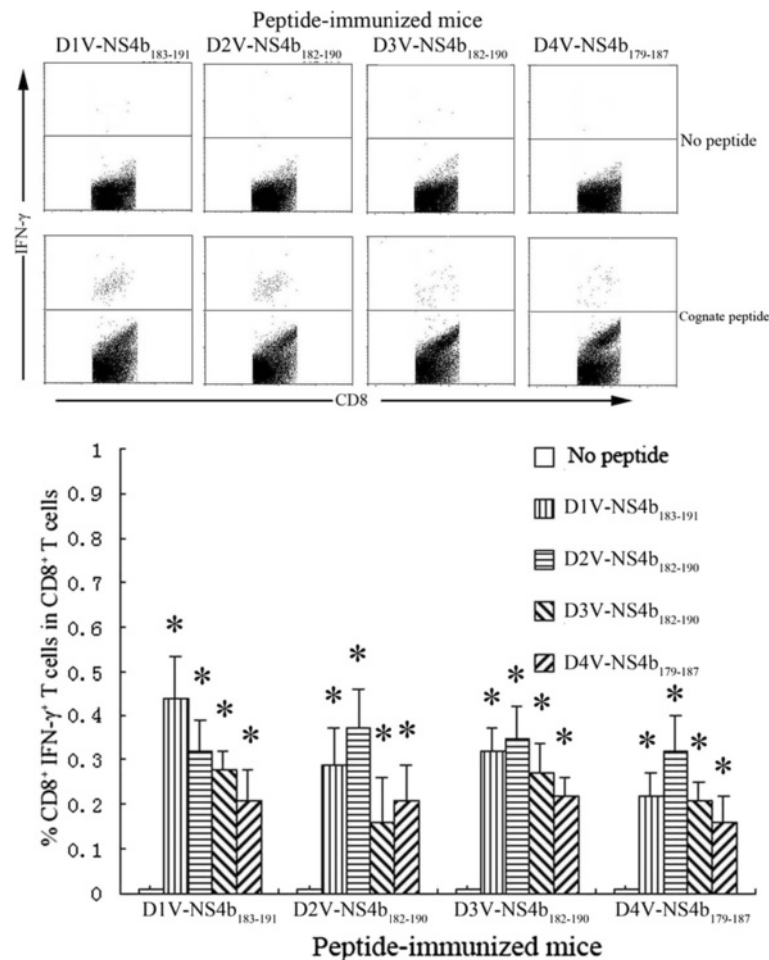


Figure 7 Detection of peptide-specific CD8⁺ IFN- γ ⁺ T cells in HLA-A*0201 transgenic mice immunized with D1V-NS2a₁₈₃₋₁₉₁ or heterologous peptides. Splenocytes were isolated from the peptide-immunized mice and were stimulated *in vitro* with cognate peptide or heterologous peptide. The percentages of CD8⁺ IFN- γ ⁺ T cells in CD8⁺ T cells were measured using ICS assay. *Indicating the positive response to a peptide.

restricted CD8⁺ T-cell epitopes (NS4a₁₄₀₋₁₄₈ and NS2a₁₄₄₋₁₅₂) and one cross-reactive HLA-A*0201-restricted CD8⁺ T-cell epitopes which is similar to a previously identified epitope. In the following study, we would explore whether these peptide could be recognized by PBMCs from human donors infected with DV. Our results show that using a combination of prediction algorithms and HLA transgenic mice is effective for identifying HLA-restricted epitopes. In general, the antiviral activity of CD8⁺ T cells is mediated by the production of cytokines, particularly IFN- γ . Further studies will be needed to determine the protective role of these serotype-specific epitopes. D1V-NS4b₁₈₃₋₁₉₁, D2V-NS4b₁₈₂₋₁₉₀, D3V-NS4b₁₈₂₋₁₉₀ and D4V-NS4b₁₇₉₋₁₈₇ cross-reacted with each other, therefore further evaluation of the functional phenotype of serotype cross-reactive CD8⁺ T cells induced by these peptides would reveal the

exact mechanism of T cell-mediated immunopathogenesis during secondary heterologous DV serotype infection.

Methods

Epitope prediction and peptide synthesis

Based on the amino acid sequence of D1V (Hawaii strain; GenBank Accession No: ACF49259), the epitope prediction algorithms SYFPEITHI with PAMPro (<http://www.syfpeithi.de>; <http://www.paproc.de>) were applied to predict HLA-A*0201-restricted CD8⁺ T-cell epitopes. The following criteria were used to select candidate CD8⁺ T-cell epitopes. First, the candidate epitope should be a nonapeptide that has a high predictive score and a protease cleavage site (C terminus). Second, the sequence of the candidate epitope should be highly conserved in most D1V strains. If a candidate epitope has a high affinity for HLA-A*0201 as confirmed by

an MHC peptide complex stabilization assay, its variant peptides in D2V (NGC strain; AAC59275), D3V (H87 strain; AAA99437) and D4V (H241 strain; AAX48017) would be selected and synthesized. All peptides were synthesized at > 90% purity by ChinaPeptides Co., Ltd (Shanghai, China).

Cells and mice

The transporter associated with antigen processing (TAP)-deficient T2 cell line was purchased from ATCC (Manassas, VA, USA). Female C57BL/6-Transgenic (HLA-A2.1)1Enge/I mice (HLA-A*0201 transgenic mice; 6–8 weeks) were purchased from the Jackson Laboratory (Bar Harbor, ME, USA). Female C57BL/6 mice (6–8 weeks) were provided by the Laboratory Animal Center of Wenzhou Medical College.

MHC-peptide complex stabilization assay

The ability of peptides to stabilize MHC molecules on the surface of T2 cells was measured as described previously [21]. T2 cells (2×10^5 cells/0.5 ml) were incubated in serum-free RPMI 1640 medium in the presence of different concentrations of peptide (1, 10, 100 $\mu\text{g/ml}$) for 1 h at $37^\circ\text{C}/5\% \text{CO}_2$ incubator. Cells were then incubated at 26°C for 12 h, and then returned to 37°C for a 3 h incubation. Finally, T2 cells were stained with FITC-conjugated anti-HLA-A*0201 antibody (BD Pharmingen, USA) for 40 min at 4°C . T2 cells incubated in serum-free RPMI 1640 medium without peptides served as a negative control (background). Mean fluorescence intensity (MFI) of T2 cells was recorded with a FACS Calibur flow cytometer (BD bioscience, USA), and results expressed as fluorescence index (FI). The following formula was used to calculate the FI.

$$\text{FI} = \frac{\text{MFI sample} - \text{MFI background}}{\text{MFI background}}$$

Immunization of HLA-A*0201 transgenic mice

HLA-A*0201 transgenic mice were subdivided into 12 groups (4 mice/group). Mice were inoculated subcutaneously with high-affinity peptide (50 $\mu\text{g}/\text{mouse}$) emulsified in Freund's complete adjuvant. One week later, mice were immunized with the same peptide emulsified in Freund's incomplete adjuvant. Mice were boosted three more times at weekly intervals. Mock-immunized (adjuvant alone) HLA-A*0201 transgenic mice and peptide-immunized C57BL/6 mice served as controls. One week after the final immunization, all mice were sacrificed and splenocytes extracted. ELISPOT and ICS assays were conducted to detect the frequencies of peptide-specific IFN- γ -producing cells. All animal were performed following the Institutional Animal Care and Use Committee-approved protocols.

IFN- γ ELISPOT assays

Splenocytes were resuspended to a final concentration of 1×10^6 cells/ml in RPMI 1640 medium supplemented with 10% fetal bovine serum (FBS). ELISPOT assays were performed in pre-coated 96-well plates (U-CyTech Company, Netherlands). Splenocytes were seeded at 1×10^5 cells/well and exposed to either cognate or heterologous peptide at a final concentration of 10 $\mu\text{g/ml}$. Negative control wells contained splenocytes but no peptide. Positive control wells included cells plus phytohemagglutinin (PHA) at a final concentration of 10 $\mu\text{g/ml}$. All tests were carried out in duplicate wells, with plates incubated for 24 h at $37^\circ\text{C}/5\% \text{CO}_2$. Plates were washed and then incubated with biotinylated anti-mouse IFN- γ for 1 h at 37°C . After washing, plates were labeled with streptavidin-horseradish peroxidase, and developed using fresh ACE solution as a substrate. IFN- γ spots were counted using an ELISPOT reader (Beijing SageCreation Science Co. Ltd, Beijing, China). Peptide-specific T-cell frequency was expressed as SFCs/ 1×10^5 splenocytes. Background spots (negative control wells) were subtracted from test wells. A positive response to a peptide was defined as having > 5 SFCs/ 1×10^5 splenocytes after subtraction of the background.

ICS assays

Splenocytes were cultured with either cognate peptide (10 $\mu\text{g/ml}$) or heterologous peptide (10 $\mu\text{g/ml}$) in a 1.5 ml microcentrifuge tube for 6 h at $37^\circ\text{C}/5\% \text{CO}_2$. Negative controls did not receive any peptide stimulation. During the last 5 h, brefeldin A (10 $\mu\text{g/ml}$) was added to each tube. After a 6 h incubation, cells were washed and then stained with APC-conjugated anti-mouse CD3 and FITC-conjugated anti-mouse CD8 antibodies (eBioscience company, USA) for 40 min at 4°C . Cells were then washed and fixed with 4% paraformaldehyde for 20 min at 4°C , permeabilized using 0.5% saponin for 10 min at 4°C , and stained with PE-conjugated anti-mouse IFN- γ antibody (eBioscience company, USA) for 40 min at 4°C . A FACS Calibur flow cytometer (BD Bioscience, USA) was used to analyze labeled cells. $\text{CD3}^+ \text{CD8}^+$ T cells were gated and the proportion of IFN- γ -producing CD8^+ T cells ($\text{CD8}^+ \text{IFN-}\gamma^+$ T cells) as a subset of all CD8^+ T cells were determined.

Statistical analysis

Data are expressed as mean value \pm standard deviation (SD). The Student's t-test was used to test statistical significance. P values of < 0.05 were considered statistically significant.

Competing interests

The authors declare that they have no competing interests.

Authors' contributions

ZLD, QL and JSW conceived of the study. ZLD performed MHC-peptide complex stabilization assay and murine IFN- γ ELISPOT assay, analyzed the results and drafted the manuscript; QL performed mice vaccination and ICS assay. JSW supervised the research and helped draft the manuscript. ZBW and KDX assisted with data analysis. JLG and WQL prepared the experiment. Manuscript is approved by all authors for publication.

Acknowledgements

We acknowledge grant support from the National Natural Science Foundation of China (31070143 and 30800050), the Planned Science and Technology Project of Wenzhou (H20100066 and Y20090338), and the Natural Science Foundation of Zhejiang province (Y2090744).

Author details

¹Department of Microbiology and Immunology, Wenzhou Medical College, Wenzhou, China. ²Department of Clinical Laboratory, The Second Affiliated Hospital of Wenzhou Medical College, Wenzhou, China. ³Department of Clinical Laboratory, The people's Hospital of Ruian, Wenzhou, China.

Received: 20 November 2011 Accepted: 24 October 2012

Published: 5 November 2012

References

- Whitehead SS, Blaney JE, Durbin AP, Murphy BR: Prospects for a dengue virus vaccine. *Nat Rev Microbiol* 2007, **5**(7):518–528.
- Littaua R, Kurane I, Ennis FA: Human IgG Fc receptor II mediating antibody-dependent enhancement of dengue virus infection. *J Immunol* 1990, **144**(8):3183–3186.
- Halstead SB: Neutralization and antibody dependent enhancement of dengue viruses. *Adv Virus Res* 2003, **60**:421–467.
- Dejnirattisai W, Jumnainsong A, Onsirakul N, Fitton P, Vasanawathana S, Limpitikul W, Puttikhunt C, Edwards C, Duangchinda T, Supasa S, Chawansuntati K, Malasit P, Mongkolsapaya J, Screaton G: Cross-reacting antibodies enhance dengue virus infection in humans. *Science* 2010, **328**(5979):745–748.
- Sabin AB: Research on dengue during World War II. *AmJ Trop Med Hyg* 1952, **1**(1):30–50.
- Diamond MS, Roberts TG, Edgill D, Lu B, Ernst J, Harris E: Modulation of dengue virus infection in human cells by alpha, beta, and gamma interferons. *J Virol* 2000, **74**(11):4957–4966.
- Diamond MS, Harris E: Interferon inhibits dengue virus infection by preventing translation of viral RNA through a PKR-independent mechanism. *Virology* 2001, **289**(2):297–311.
- Mongkolsapaya J, Dejnirattisai W, Xu XN, Vasanawathana S, Tangthawornchaikul N, Chairunsri A, Sawasdivorn S, Duangchinda T, Dong T, Rowland-Jones S, Yenchitsomanus PT, McMichael A, Malasit P, Screaton G: Original antigenic sin and apoptosis in the pathogenesis of dengue hemorrhagic fever. *Nat Med* 2003, **9**(7):921–927.
- Imrie A, Meeks J, Gurary A, Sukhbataar M, Kitsutani P, Effler P, Zhao Z: Differential functional avidity of dengue virus-specific T-cell clones for variant peptides representing heterologous and previously encountered serotypes. *J Virol* 2007, **81**(18):10081–10091.
- Yauch LE, Zellweger RM, Kotturi MF, Qutubuddin A, Sidney J, Peters B, Prestwood TR, Sette A, Shresta S: A protective role for dengue virus-specific CD8+ T cells. *J Immunol* 2009, **182**(8):4865–4873.
- Zivna I, Green S, Vaughn DW, Kalayanarooj S, Stephens HA, Chandanayingyong D, Nisalak A, Ennis FA, Rothman AL: T cell responses to an HLA-B*07-restricted epitope on the dengue NS3 protein correlate with disease severity. *J Immunol* 2002, **168**(11):5959–5965.
- Bashyam HS, Green S, Rothman AL: Dengue virus-reactive CD8+ T cells display quantitative and qualitative differences in their response to variant epitopes of heterologous viral serotypes. *J Immunol* 2006, **176**(5):2817–2824.
- Mongkolsapaya J, Duangchinda T, Dejnirattisai W, Vasanawathana S, Avirutnan P, Jairungsri A, Khemnu N, Tangthawornchaikul N, Chotiyanwong P, Sae-Jang K, Koch M, Jones Y, McMichael A, Xu X, Malasit P, Screaton G: T cell responses in dengue hemorrhagic fever: are cross-reactive T cells suboptimal? *J Immunol* 2006, **176**(6):3821–3829.
- Dong T, Moran E, Vinh Chau N, Simmons C, Luhn K, Peng Y, Wills B, Phuong Dung N, Thi Thu Thao L, Hien TT, McMichael A, Farrar J, Rowland-Jones S:

- High pro-inflammatory cytokine secretion and loss of high avidity cross-reactive cytotoxic T-cells during the course of secondary dengue virus infection. *PLoS One* 2007, **2**(12):e1192.
- Friberg H, Burns L, Woda M, Kalayanarooj S, Endy TP, Stephens HA, Green S, Rothman AL, Mathew A: Memory CD8+ T cells from naturally-acquired primary dengue virus infection are highly cross-reactive. *Immunol Cell Biol* 2011, **89**(1):122–129.
 - Mathew A, Rothman AL: Understanding the contribution of cellular immunity to dengue disease pathogenesis. *Immunol Rev* 2008, **225**:300–313.
 - Simmons CP, Dong T, Chau NV, Dung NT, Chau TN, le Thao TT, Hien TT, Rowland-Jones S, Farrar J: Early T-cell responses to dengue virus epitopes in Vietnamese adults with secondary dengue virus infections. *J Virol* 2005, **79**(9):5665–5675.
 - An J, Zhou DS, Zhang JL, Morida H, Wang JL, Yasui K: Dengue specific CD8+ T cells have both protective and pathogenic roles in dengue virus infection. *Immunol Lett* 2004, **95**(2):167–174.
 - Swaminathan S, Khanna N: Dengue vaccine-current progress and challenges. *Curr Sci* 2010, **98**:369–378.
 - Zivny J, DeFronzo M, Jarry W, Jameson J, Cruz J, Ennis FA, Rothman AL: Partial agonist effect influences the CTL response to a heterologous dengue virus serotype. *J Immunol* 1999, **163**(5):2754–2760.
 - Wen J, Duan Z, Jiang L: Identification of a dengue virus-specific HLA-A*0201-restricted CD8+ T cell epitope. *J Med Virol* 2010, **82**(4):642–648.
 - Lund O, Nascimento EJ, Maciel M Jr, Nielsen M, Larsen MV, Lundegaard C, Harndahl M, Lamberth K, Buus S, Salmons J, August TJ, Marquest ET Jr: Human leukocyte antigen (HLA) class I restricted epitope discovery in yellow fever and dengue viruses: importance of HLA binding strength. *PLoS One* 2011, **6**(10):e26494.
 - Weiskopf D, Yauch LE, Angelo MA, John DV, Greenbaum JA, Sidney J, Kolla RV, De Silva AD, de Silva AM, Grey H, Peters B, Shresta S, Sette A: Insights into HLA-restricted T cell responses in a novel mouse model of dengue virus infection point toward new implications for vaccine design. *J Immunol* 2011, **187**(8):4268–4279.
 - Chentoufi AA, Zhang X, Lamberth K, Dasgupta G, Bettahi I, Nguyen A, Wu M, Zhu X, Mohebbi A, Buus S, Wechsler SL, Nesburn AB, BenMohamed L: HLA-A*0201-restricted CD8+ cytotoxic T lymphocyte epitopes identified from herpes simplex virus glycoprotein D. *J Immunol* 2008, **180**(1):426–437.
 - Chang KM, Gruener NH, Southwood S, Sidney J, Pape GR, Chisari FV, Sette A: Identification of HLA-A3 and-B7-restricted CTL response to hepatitis C virus in patients with acute and chronic hepatitis C. *J Immunol* 1999, **162**:1156–1164.
 - Jaiswal S, Pearson T, Friberg H, Shultz LD, Greiner DL, Rothman AL, Mathew A: Dengue virus infection and virus-specific HLA-A2 restricted immune responses in humanized NOD-scid IL2rgamma null mice. *PLoS One* 2009, **4**(10):e7251.
 - Gao G, Wang Q, Dai Z, Calcedo R, Sun X, Li G, Wilson JM: Adenovirus-based vaccines generate cytotoxic T lymphocytes to epitopes of NS1 from dengue virus that are present in all major serotypes. *Hum Gene Ther* 2008, **19**(9):927–936.

doi:10.1186/1743-422X-9-259

Cite this article as: Duan et al.: HLA-A*0201-restricted CD8+ T-cell epitopes identified in dengue viruses. *Virology Journal* 2012 **9**:259.

Submit your next manuscript to BioMed Central and take full advantage of:

- Convenient online submission
- Thorough peer review
- No space constraints or color figure charges
- Immediate publication on acceptance
- Inclusion in PubMed, CAS, Scopus and Google Scholar
- Research which is freely available for redistribution

Submit your manuscript at
www.biomedcentral.com/submit

