

# Phaeohyphomycoses, Emerging Opportunistic Diseases in Animals

S. Seyedmousavi,<sup>a,b</sup> J. Guillot,<sup>c</sup> G. S. de Hoog<sup>d,e,f,g</sup>

Department of Medical Microbiology, Radboud University Nijmegen Medical Centre, Nijmegen, Netherlands<sup>a</sup>; Nijmegen Institute for Infection, Inflammation and Immunity, Nijmegen, Netherlands<sup>b</sup>; Department of Parasitology-Mycolology, Dynamyc, UMR BIPAR Anses, Enva, Upec, UPE, École Nationale Vétérinaire d'Alfort, Maisons-Alfort, France<sup>c</sup>; CBS-KNAW Fungal Biodiversity Centre, Utrecht, Netherlands<sup>d</sup>; Institute for Biodiversity and Ecosystem Dynamics, University of Amsterdam, Amsterdam, Netherlands<sup>e</sup>; Peking University Health Science Center, Research Center for Medical Mycology, Beijing, China<sup>f</sup>; Sun Yat-sen Memorial Hospital, Sun Yat-sen University, Guangzhou, China<sup>g</sup>

SUMMARY .....	19
INTRODUCTION .....	19
CHARACTERISTICS OF BLACK YEASTS AND RELATIVES .....	20
DISEASES IN INVERTEBRATES .....	20
Crustaceans .....	20
Mollusks .....	20
Annelids .....	22
DISEASES IN COLD-BLOODED VERTEBRATES .....	22
Amphibians .....	22
Fishes .....	23
Reptiles .....	24
DISEASES IN WARM-BLOODED VERTEBRATES .....	26
Poultry and Wild Birds .....	26
Cats and Dogs .....	26
Ruminants and Equines .....	28
COMPARATIVE PATHOGENICITIES OF BLACK YEASTS IN ANIMALS .....	30
DIAGNOSIS AND IDENTIFICATION .....	30
TREATMENT AND CONTROL .....	31
CONCLUDING REMARKS .....	31
ACKNOWLEDGMENTS .....	32
REFERENCES .....	32
AUTHOR BIOS .....	35

## SUMMARY

Emerging fungal diseases due to black yeasts and relatives in domestic or wild animals and in invertebrates or cold- and warm-blooded vertebrates are continually being reported, either as novel pathogens or as familiar pathogens affecting new species of hosts. Different epidemiological situations can be distinguished, i.e., occurrence as single infections or as zoonoses, and infection may occur sporadically in otherwise healthy hosts. Such infections are found mostly in mammals but also in cold-blooded animals, are frequently subcutaneous or cerebral, and bear much similarity to human primary disorders. Infections of the nervous system are mostly fatal, and the source and route of infection are currently unknown. A third epidemiological situation corresponds to pseudoepidemics, i.e., infection of a large host population due to a common source. It is often observed and generally hypothesized that the susceptible animals are under stress, e.g., due to poor housing conditions of mammals or to a change of basins in the case of fishes. The descriptions in this article represent an overview of the more commonly reported and recurring black fungi and the corresponding diseases in different types of animals.

## INTRODUCTION

Phaeohyphomycosis is an umbrella term covering subcutaneous and systemic infections caused by pigmented fungi, where the agents are present in host tissue with brownish to olivaceous hyphal elements (1, 2). Fungal cells may also be unicellular and

yeast-like, which makes the term somewhat confusing. The dark coloration of these fungi is due to the presence of melanin in the cell wall. This distinguishes them from other hyphomycetes that in tissue show similar morphology but lack pigmentation, the hyaline fungi (3), causing hyalohyphomycoses. Two more histopathological types are described, viz., chromoblastomycosis and mycetoma, characterized by spherical, cruciately septate “muri-form cells” and multicellular grains, respectively. Clinically, phaeohyphomycoses range from superficial colonization to systemic abscess formation and dissemination (4).

Among the melanized fungi, the so-called “black yeasts” and their relatives are particularly significant as agents of disease in cold-blooded vertebrates (5). The term “black yeasts” indicates those melanized fungi that are able to reproduce in culture by unilateral budding (6). Not all members of the group causing infection have this ability, and therefore the fungi are united on the basis of phylogenetic relationships. They belong to a limited number but phylogenetically dispersed orders of ascomycetes (7) and show divergent adaptations to extreme conditions (8), among which are the bodies of animal hosts.

During the last decades, the potential pathogenicity of black

Address correspondence to G. S. de Hoog, de.hoog@cbs.knaw.nl.

Copyright © 2013, American Society for Microbiology. All Rights Reserved.

doi:10.1128/CMR.00065-12

yeast infections in crustaceans, captive and farmed fish, amphibians, aquarium animals, and other cold-blooded vertebrates has increasingly been recognized (9–12). Reports of black yeast-like infections in warm-blooded animals are relatively scant (13, 14), and these infections are mostly neurological. Similar to infections in humans, systemic phaeohyphomycoses frequently occur in otherwise healthy hosts and thus may be expected as emerging opportunists in immunocompromised or otherwise debilitated vertebrates and then may take (pseudo)epidemic proportions, as is frequently observed in farmed fish (5). Given the potential significance of black yeasts and their relatives to animal health and the scattered knowledge on these fungi in the veterinary literature, the present paper reviews the most important infections of animals due to these microorganisms.

### CHARACTERISTICS OF BLACK YEASTS AND RELATIVES

A hierarchic taxonomy of black yeasts and relatives of veterinary importance is shown in Table 1, classified as described by Hibbett et al. and de Hoog et al. (15, 16). Mainly members of three orders are involved: the *Pleosporales*, the *Ochroconiales*, and particularly the *Chaetothyriales*. The orders belong to different subclasses and thus are totally unrelated. A fourth order, the *Capnodiales*, has been listed because of frequent reports of “*Cladosporium*” infections. However, *Cladosporium* is a very common genus of saprobic contaminants, and thus far none of the cases has been proven by sequencing. Morphologically similar species of *Fonsecaea* (*Chaetothyriales*) probably were involved.

Factors which are of significance for pathogenicity of black fungi include the presence of melanin and carotene, formation of thick cell walls and meristematic growth (production of swollen, isodiametrically enlarging cell clumps with thick cell walls, in which melanin is usually deposited), presence of yeast-like phases, presence of additional forms of conidiogenesis, thermo- and osmotolerance, adhesion, hydrophobicity, assimilation of aromatic hydrocarbons, production of extracellular polysaccharides, siderophores, and acidic or alkaline secondary metabolites (6). The melanin pigment is believed to contribute to the organism's ability to elude host immune responses. This is thought to be achieved through blocking the effects of hydrolytic enzymes on the cell wall and scavenging free radicals released by phagocytic cells during the oxidative burst (3, 17).

Black yeasts of the *Chaetothyriales* present a complex ecological behavior. Numerous species are isolated from odd environments, such as those polluted with aromatic hydrocarbons. A role of an assimilative ability of these compounds has been surmised on the basis of their structural similarity with neurotransmitters, explaining their predilection for nervous system tissue (18, 19). Black yeasts species able to grow at temperatures of 37°C or above (in the *bantiana*, *dermatitidis*, and *jeanselmei* clades) (5) may cause systemic or disseminated infections in mammals, while those with a maximum growth temperature of around 35 to 37°C (*carrionii* and *europaea* clades) cause (sub)cutaneous and superficial infections in humans but are prevalent in cold-blooded animals. In addition, black yeast species with a maximum growth temperature of 50°C (*Ochroconis gallopava*) are able to infect birds, which have a body temperature well above that of humans, systemically (20). Nonthermotolerant species with maximum growth temperatures of 27 to 33°C may cause diseases in cold-blooded animals and, rarely, invasive infections in other animals (5).

### DISEASES IN INVERTEBRATES

Recent reports underline that black yeasts are able to infect a large spectrum of invertebrates, including arthropods (especially crustaceans), mollusks, and annelids. To our knowledge, insects are not susceptible to particular black fungi. Fatal diseases may be observed in insects due to other pathogens, such as *Beauveria* spp., *Cordyceps* spp., *Conidiobolus* spp., *Metarrhizium* spp., and *Hirsutiella* spp. These hyaline fungi are considered an environmentally friendly management option to control crop pest agents or vectors.

#### Crustaceans

Farmed and captured crustaceans (shrimps, crabs, lobsters, etc.) contribute to a significant proportion of global seafood production. Fungal disease therefore has been identified as a significant bottleneck for the successful harvesting of wild and cultured crustaceans. For example, lethargic crab disease (LCD), a systemic infection characterized by hematogenous dissemination, has been reported to cause extensive population depressions in the mangrove land crab (*Ucides cordatus*) in the northeastern region of the Brazilian coast (11, 12, 21). The impact of this infirmity is likely to be severe (22), as crabs represent an important fishery resource for local communities (23). Causative agents were described as *Exophiala cancerae* (5) and *Fonsecaea brasiliensis* (21). Clinical signs included increasingly weak motor control, particularly of pereopods and chelae, causing lethargy and poor balance, followed by the death of the affected crab. Tetany of the claws was also observed in many crabs with other signs of the disease. The histopathology of crabs with variable signs of LCD indicated that the most affected tissues were the epidermis, connective tissue, heart, hepatopancreas, nervous system, and gills. Necrosis, tissue degeneration, and congestion of hemal sinuses (the two principal empty areas along the digestive tube) and vessels were present in heavily infected organs. Nerve fibers were compressed by accumulations of yeast-like cells. In heavy infections, the tissue of gill lamellae was destroyed with subsequent dilatation or compression. Cellular immune responses included hemocytic infiltration, agglutination and encapsulation, and phagocytosis. Phagocytosis of yeast-like cells was abundant in the connective tissue associated with the exoskeleton (12).

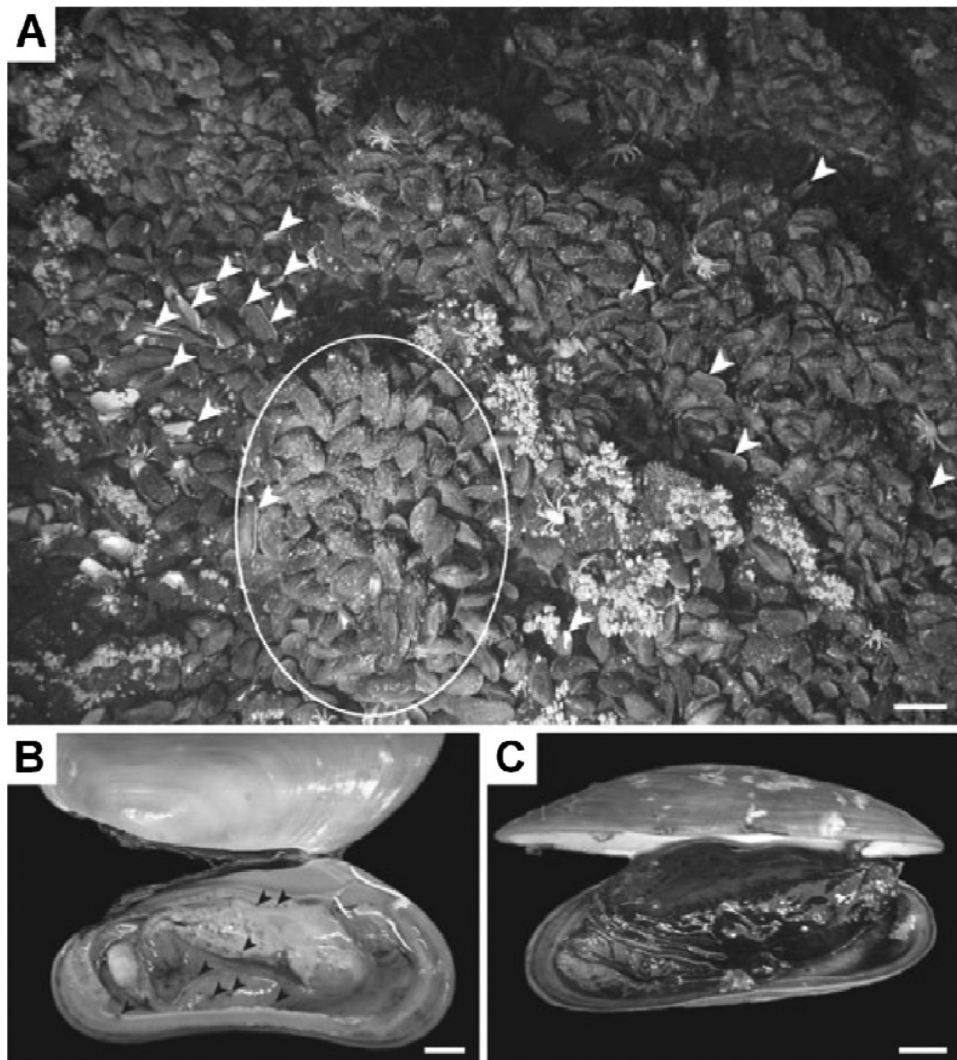
#### Mollusks

Dover et al. reported massive mortalities in populations of mussels (*Bathymodiolus brevior*) due to an epizootic event of *Capronia moravica* in the deep sea at the Mussel Hill hydrothermal vent in the Fiji Basin (24). The mussels presented a range of disease states, from apparently healthy individuals with normal creamy coloration, fleshy tissues, and well-developed gonads to mussels with scattered spots of brownish discoloration of mantle tissues to progressively more discolored bodies to, in the most dramatic cases, black-body stages. General deterioration of mussel condition was evident. Black-body mussels had a distinctive odor, which was neither that of hydrogen sulfide, as is typical for mussels from hydrothermal vents, nor that of putrescence (Fig. 1). Histological examination of brown spots on mantle tissues revealed the presence of dense populations of thick-walled yeast cells up to 15 µm in length. Connective tissues surrounding the gonads and digestive diverticula of brown-spotted mussels were also infected with black yeast and were infiltrated by hemocytes.

TABLE 1 Schematic classification of black fungi causing animal diseases

Fungal pathogen (kingdom <i>Fungi</i> , phylum <i>Ascomycota</i> , subphylum <i>Pezizomycotina</i> )	Target animal <sup>a</sup>	Reference(s)
Class <i>Dothideomycetes</i>		
Order <i>Capnodiales</i> , family <i>Davidiellaceae</i>		
<i>Cladosporium cladosporioides</i>	Ba (toad)	31
	M (dog)	107
	M (sheep)	14
<i>Cladosporium</i> sp.	M (cat)	83, 84, 99, 100
Order <i>Pleosporales</i> , family <i>Pleosporaceae</i>		
<i>Alternaria alternata</i>	M (cat)	79, 86, 87, 88, 89, 90, 91, 92, 93, 94
	M (horse)	110, 111
	M (zebra)	112
<i>Alternaria infectoria</i>	M (dog)	87
<i>Bipolaris spicifera</i>	M (dog)	103, 104
<i>Phoma herbarum</i>	F (chinook salmon)	46
Class <i>Eurotiomycetes</i>		
Order <i>Chaetothyriales</i> , family <i>Herpotrichiellaceae</i>		
<i>Capronia moravica</i>	I (mussel)	24
<i>Cladophialophora bantiana</i>	M (cat)	79, 87, 88, 89, 90, 91, 92, 94
	M (leopard)	97, 98
	M (dog)	105, 108
	M (alpaca)	13
<i>Exophiala angulospora</i>	F (weedy seadragons)	38
<i>Exophiala aquamarina</i>	F (leafy seadragons)	38
	F (sand lance)	38
<i>Exophiala attenuata</i>	M (cat)	95
<i>Exophiala cancerae</i>	I (crab)	11, 12
<i>Exophiala equina</i>	R (Galapagos tortoise)	66
<i>Exophiala jeanselmei</i>	I (earthworm)	25
	R (eastern box turtle)	67
<i>Exophiala oligosperma</i>	R (Aldabra tortoise)	68
<i>Exophiala pisciphila</i>	F (Atlantic salmon)	40
	F (Channel catfish)	42
	F (smooth dogfish)	41
<i>Exophiala salmonis</i>	F (cutthroat trout, Atlantic salmon)	36
<i>Exophiala spinifera</i>	M (cat)	90
<i>Exophiala</i> sp.	F (seahorse)	39
	F (Japanese flounder)	43
	F (King George whiting)	45
<i>Fonsecaea brasiliensis</i>	I (crab)	5, 21
<i>Fonsecaea multimorphosa</i>	M (cat)	101
<i>Fonsecaea pedrosoi</i>	Ba (toad)	34
<i>Fonsecaea</i> sp.	Ba (frog)	10, 32
<i>Phialophora verrucosa</i>	M (cat)	84, 85, 88
	M (dog)	85
<i>Phialophora</i> sp.	Ba (frog)	10, 32
<i>Rhinocladiella</i> sp.	Ba (frog)	10, 32
Order <i>Ochroconiales</i> , family <i>Ochroconiaceae</i>		
<i>Ochroconis gallopava</i>	Bd (turkey, chicken)	20, 71, 72, 73, 75, 76, 77
	Bd (gray-winged trumpeter)	77
	Bd (quail)	78
	Bd (owl)	74
	M (cat)	102
<i>Ochroconis humicola</i>	Ba (toad)	27
	F (coho salmon)	47
	F (Atlantic salmon)	48
	F (rainbow trout)	49
	F (scorpion fish)	50
	F (walking catfish)	51
	R (tortoise)	70
<i>Ochroconis tshawytschae</i>	F (chinook salmon)	52

<sup>a</sup> I, invertebrates; Ba, batracians; R, reptiles; F, fishes; M, mammals; Bd, birds.



**FIG 1** Mussels. Massive mussel mortality due to *Capronia* (a member of *Chaetothyriales*)-like black yeast infection is shown. (Reproduced from reference 24 with permission of the publisher.) (A) The paired empty mussel shells (arrowheads) and area of broken shells on the left side of the photograph were observed in mussel beds. Scale bar, 10,000 mm. (B and C) Clinical signs of diseased mussels. (B) Brown-spot stage of infection (highlighted with black arrowheads). Scale bar, 1,000 mm. (C) Black-body stage of infection, involving the whole body. Scale bar, 1,000 mm.

### Annelids

*Exophiala jeanselmei* was isolated by Vakili (25) from naturally infected late embryonic stages of the earthworm *Octolasion tyrtaeum* and from the cocoon albumen of *Eisenia foetida*. Spherical black granules, consisting of brown to black hyphae and cell aggregates, were observed in cocoon albumen and tissues of infected embryos of *Octolasion tyrtaeum* and albumen of *E. foetida*, which included both healthy-appearing and necrotic eggs. Excised black granules, when suspended in water, released both single and budding black yeast cells. The disease was reproduced by artificial inoculation and reisolation of the organism from cocoons (25).

### DISEASES IN COLD-BLOODED VERTEBRATES

Outbreaks of infections by melanized fungi in cold-blooded animals appear to be relatively frequent in captive and farmed fishes, amphibians, and aquarium animals (5). This may cause severe losses in aquaculture and fishery industries.

### Amphibians

Amphibians are distinctive among animals physiologically, morphologically, and medically. Their collectively unique life histories and the considerable gaps in our knowledge concerning diseases and veterinary care make it comparatively challenging to diagnose their disease, to treat them, and to maintain them successfully in live condition (10, 26). Fungal diseases of amphibians are closely related to diseases of other ectothermic vertebrates. Transmission usually occurs through contamination from the environment, interclass transmission (e.g., from fish to amphibian), and traumatic injury to the skin, which may contribute to the infection (27). The possibility that infection switches from a fish population to amphibians seems to be an important epidemiological consideration for amphibian disease (10).

Fungi and fungus-like organisms cause a number of diseases among amphibians, including chytridiomycosis (see below), phaeohyphomycosis, zygomycoses, saprolegniasis (a fungal dis-

ease caused by species of *Saprolegnia* mainly in freshwater salmonids), and ichthyophoniasis (a systemic granulomatous disease caused by *Ichthyophonus hoferi*) (10). Currently, the most significant and well-described pathogen of amphibians is a chytrid fungus, *Batrachochytrium dendrobatidis*, which is an ubiquitous, keratinophilic or chitinophilic, sporozoic fungus located in moist and aquatic environments.

*Batrachochytrium dendrobatidis* is responsible for fatal infections in amphibians and, despite being in a phylum not known for pathogenicity in vertebrates, is now recognized as a primary driver of amphibian declines (28, 29).

Toads appear to be more susceptible to the black yeast infection when they are debilitated and stressed (27, 30). Spontaneous disease occurs predominantly in stressed animals after removal from their natural habitat (10, 31). Two forms of infection, cutaneous and disseminated systemic, have been reported in both wild and captive animals. Disseminated systemic mycosis was reported in epizootics among a number of wild and captive frogs (*Hyla caerulea*, *Pternohylax odiens*, *Phyllobates rinitatis*, *Rhacophorus* spp., and *Hyla septentrionalis*) in the United States, with granulomatous infection of internal organs (10, 32). The main etiologic agents were attributed to the genera *Phialophora*, *Fonsecaea*, *Rhinocladiella*, while a member of the order *Ochroconiales*, *Ochroconis humicola*, also was involved (27). Clinical signs of disease included anorexia, weight loss, ulcers or nodules in the skin, and swelling and lesions of internal organs, including the spleen, liver, and kidney (33). Pigmented hyphae invaded multiple organs with mild cell necrosis and minimal inflammatory cell response (27, 34).

In postmortem examination of laboratory-housed frogs, i.e., the marine toad (*Bufo marinus*), neurological disorders and multifocal dermatitis were observed. The lesions consisted of severe granulomatous encephalomyelitis, and multiple granulomas were observed in the nasal cavity, lungs, heart, bone marrow, ovaries, and skin (31, 34, 35). Skin lesions were raised papular to vesicular and were ulcerative. Lower limbs were typically affected.

## Fishes

Systemic black yeast infections in fish have been described on many occasions (9). The infections are generally considered to be secondary to metabolic factors or stress of captivity or a consequence of water quality problems, trauma (rough handling or aggression), bacterial disease, or parasites (36, 37). Bacterial or parasitic diseases and toxic or environmental conditions may mimic fungal disease to various extents. Furthermore, mycoses may be masked by overwhelming secondary bacterial infection and therefore remain undiagnosed (9). Captivity may be a contributory factor to reduced immune function.

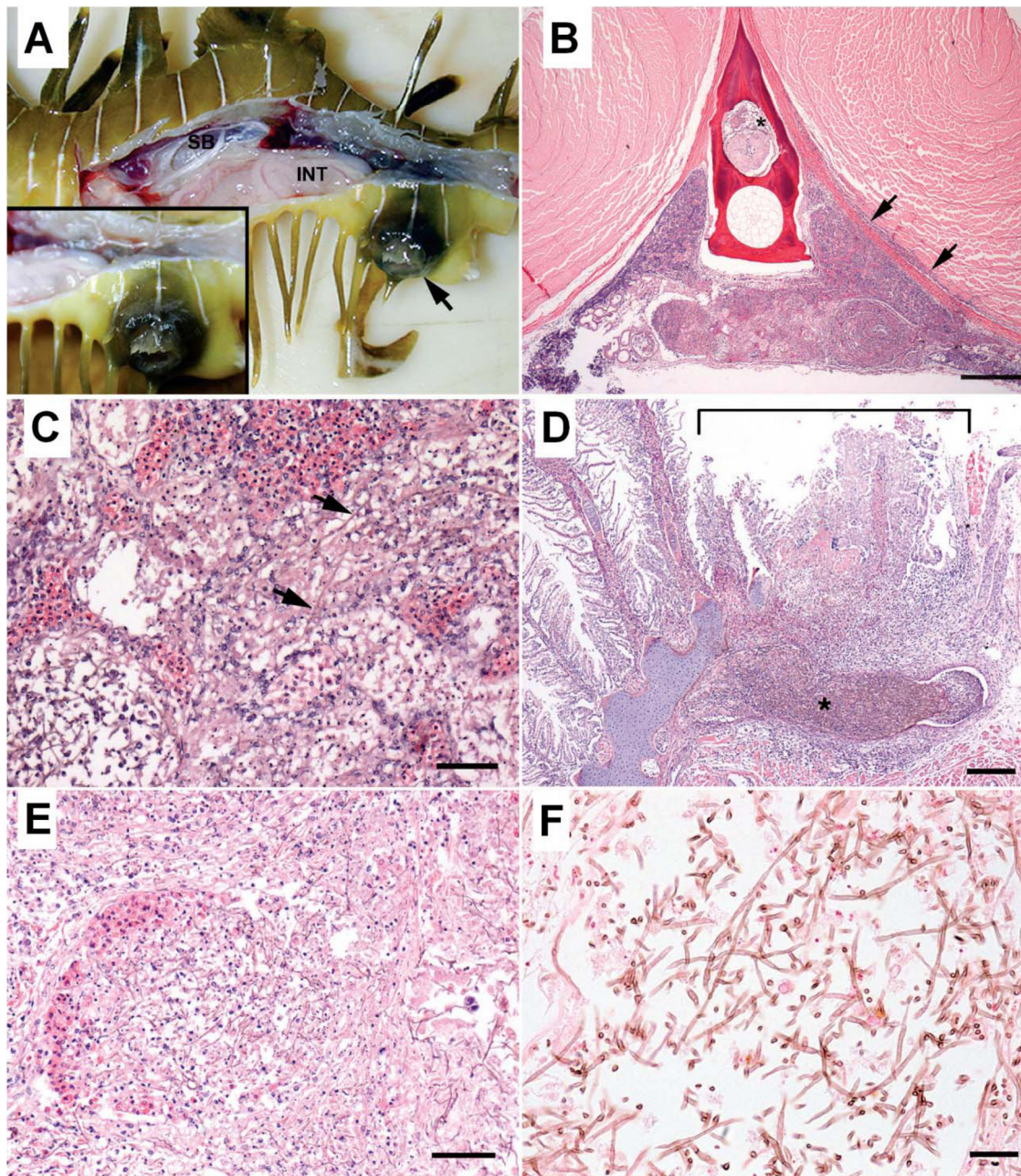
Disseminated infections by *Exophiala angulospora* were identified repeatedly in aquarium-maintained weedy seadragons (*Phyllopteryx taeniolatus*) (38). A novel species of *Exophiala*, now described as *E. aquamarina*, caused infections in leafy seadragons (*Phycodurus eques*). Systemic necrotizing lesions and invasion of blood vessels were consistent features (Fig. 2). The host's inflammatory infiltrates, consisting mainly of histiocytes, were mild compared to the extent of necrosis. Granulomas and abscesses were not consistently identified in seadragons. Infection in these seadragons could be the result of an inadequate or deficient host immunological response. In another report on *Exophiala* infection in seahorses (39), clinical signs included lethargy, disoriented swimming, and nonulcerative dermal masses. Internally raised

white to yellow areas were seen in multiple organs, particularly in the liver. Chronic cases had granulomatous inflammation similar to that seen in cases of mycobacteriosis.

Systemic *Exophiala aquamarina* infection was also recently described in a sand lance (a fish belonging to the *Ammodytidae* family), an *Ammodytes* sp. (A. Nyaoke, E. S. Weber, C. Innis, D. Stremme, C. Dowd, L. Hinckley, T. Gorton, B. Wickes, D. Sutton, S. de Hoog, and S. Frasca, Jr., unpublished data). Gross lesions included extensive cutaneous ulcers with well-demarcated black margins and multiple dark foci in gills and viscera. Fungal hyphae were identified in lesions consisting of necrosis of skeletal muscle, kidney, gill, heart, spleen, pancreas, and mesentery. Hyphae were also present in the extradural sinus and spinal cord of the fish.

Localized and systemic *Exophiala* infections have been reported in several freshwater and marine teleosts (any member of a large and extremely diverse group of ray-finned fishes), resulting in a variety of inflammatory responses. *Exophiala salmonis* was reported to be a cause of cerebral infections in cutthroat trout fingerlings (*Oncorhynchus clarkii*). Lesions were characterized by granuloma formation with numerous giant cells in brain and cranial tissues. The infection extended peripherally to include surrounding cranial structures, such as eyes and gills (36). *Exophiala salmonis* was also described as a cause of up to 40% mortality in Atlantic salmon (*Salmo salar*) hatcheries (36). Lesions in these salmon were systemic and involved brain and kidney. The host's inflammatory response varied from granulomatous to granulocytic, with the formation of microabscesses (36). Similarly, *Exophiala pisciphila* infection was associated with high mortality in Atlantic salmon. Hyphae invaded cranial structures, including semicircular canals, and the lateral body line, accompanied by a granulomatous inflammatory reaction (40). *Exophiala pisciphila* was identified in cutaneous and visceral lesions with a predilection for the kidney in channel catfish (*Ictalurus punctatus*), and skin and brain lesions were observed in smooth dogfish (*Mustelus canis*) (41, 42). The ulcerative lesions in Japanese flounder (*Paralichthys olivaceus*) caused by a species of *Exophiala* (43), in captive American plaice (a right-eyed flatfish belonging to the *Pleuronectidae* family) and *Hippoglossoides platessoides* due to *Exophiala pisciphila* (44), and in captured King George whiting (*Sillaginodes punctata*) due to an *Exophiala* species (45) were limited to the skin (Fig. 3). Systemic phaeohyphomycosis has also been associated with *Phoma herbarum* from a variety of fish species, including the Chinook salmon (*Oncorhynchus tshawytscha*) (46). The outbreak was reported in hatchery-reared fingerlings. Affected fish exhibited abnormal swimming behavior, exophthalmia, multiple rounded areas of muscle softening, protruded hemorrhagic vents, and abdominal swelling. In all affected fishes, swim bladders were filled with a whitish creamy viscous fungal mass, surrounded by dark red areas in swim bladder walls, kidneys, and musculature (46).

In several cases, two relatives of *Ochroconis gallopava* mentioned above, viz., *O. humicola* and *O. tshawytschae*, were reported to occasionally cause infection in fish. Thus, the possible existence of virulence factors in *Ochroconis* species should be considered, as thermotolerance is excluded for pathogenicity in cold-blooded animals. *Ochroconis humicola* is a rare pathogen of cold-blooded vertebrates, particularly fish such as coho salmon (*Oncorhynchus kisutch*) (47), Atlantic salmon (*Salmo salar*) (48), rainbow trout (*Oncorhynchus mykiss*) (49), scorpion fish (*Inimicus japonica*) (50), and walking catfish (*Clarias batrachus*) (51). A case of infection in chinook salmon due to *Ochroconis tshawytschae* was also reported (52).



**FIG 2** Seadragon. (A) Skin ulcer. (B to F) Histopathological features in renal parenchyma (B), dorsal trunk (C), gill (D) blood vessel in kidney (E) and kidney tissue (F). Disseminated phaeohiphomycosis is caused by an *Exophiala* sp. (Reproduced from reference 38 with permission of the publisher.) (A) Leafy seadragon with lateral body wall removed to expose coelomic viscera. A skin ulcer (arrow) is located in the skin adjacent to the cloaca. Inset, closer view of the ulcer with raised black margins. SB, swim bladder; INT, intestine. (B) Extensive necrosis involving approximately two-thirds of the renal parenchyma, including the presence of fibrin and cells in the extradural sinus (asterisk) and an infiltrate along the fascia and margin of adjacent epaxial muscle (arrows). Hematoxylin and eosin staining was used. Scale bar, 0.5 mm. (C) Transverse section of dorsal trunk with high magnification of renal parenchyma reveals innumerable filamentous brown fungal hyphae (arrows) coursing through necrotic tubules, interstitium, and sinusoids. Hematoxylin and eosin staining was used. Scale bar, 0.05 mm. (D) Focally extensive necrosis of several consecutive filaments and their lamellae (bracket) overlying a region of the arch where a mat of densely intertwined brown fungal hyphae (asterisk) resides within the venous sinus. Hematoxylin and eosin staining was used. Scale bar, 0.2 mm. (E) Intertwined hyphae are present in the blood vessel lumen, and there is necrosis of a segment of the wall. Hematoxylin and eosin staining was used. Scale bar, = 0.2 mm. (F) Fungal hyphae are slender, filamentous, and septate with occasional right-angle branches. Walls of hyphae stain brown, indicative of melanin. Fontana-Masson staining was used. Scale bar, 0.025 mm.

## Reptiles

Fungal disease has been documented worldwide in all orders and suborders of the reptilians with the exception of the Rhynchocephala (Tuataras) (53, 54). As in other vertebrates, fungal

pathogens in reptiles may be primary or secondary invaders. However, relatively few mycotic diseases have been described in free-ranging reptiles (55). Due to the terrestrial lifestyle of many reptiles, most of the infections are hyalohyphomycoses of skin

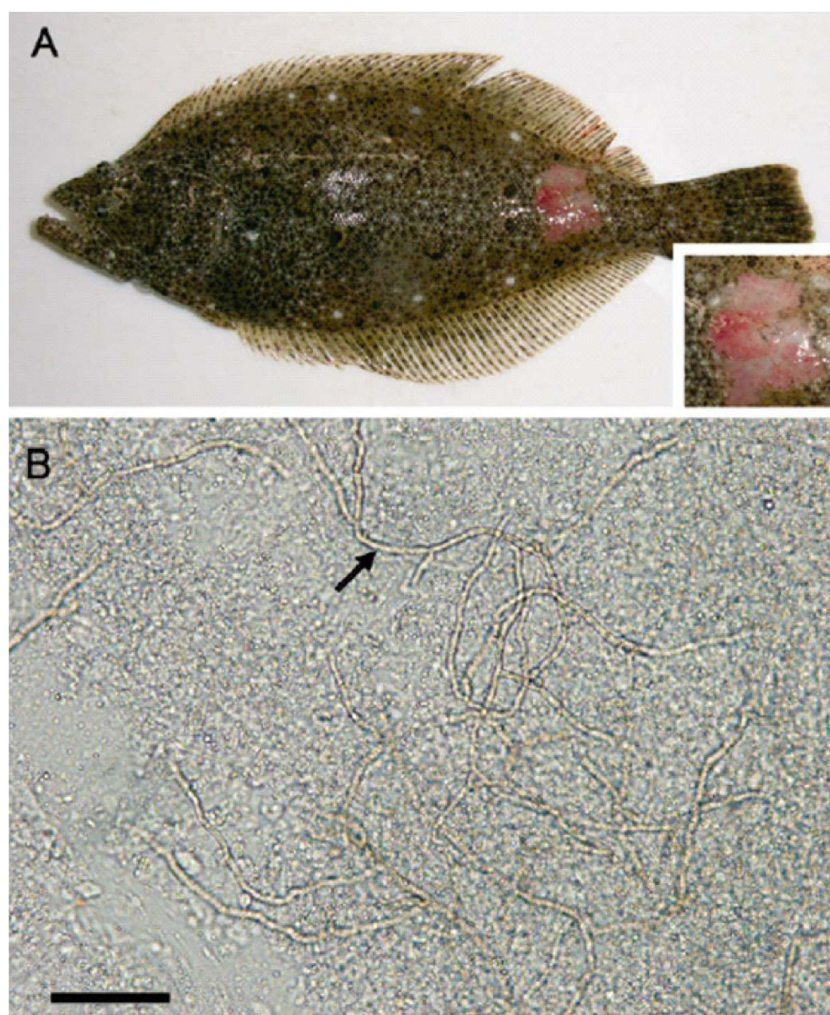


FIG 3 Skin of a fish (Japanese flounder) with cutaneous phaeohyphomycosis due to an *Exophiala* sp. (Reproduced from reference 43 with permission of the publisher.) (A) Ulcerative skin lesion in the caudal part of the ocular (eyed) side, a clinical sign of diseased fish. (B) Numerous fungal hyphae (arrow) in the skin lesion up to the edge of the slide. Scale bar, 0.05 mm.

caused particularly by *Chrysosporium* ancestors of dermatophytes (56–59). The fungi isolated from skin lesions in reptiles further include *Paecilomyces*, *Penicillium*, *Fusarium*, *Geotrichium*, *Mucor*, and *Aspergillus*. Systemic mycotic diseases such as histoplasmosis, coccidioidomycosis, and cryptococcosis are rarely seen in reptiles (55). Fungal diseases may be promoted by immune-compromising conditions, such as husbandry deficiencies or inappropriate temperatures, humidity, or enclosure hygiene (60, 61). Furthermore, reptiles are becoming more popular as companion animals and are therefore presented more frequently to veterinary care (62).

Black yeast diseases have been reported from a variety of reptiles. In a study by Jacobsen, muriform cell-like fungal elements were observed in different internal organs of a snake, mimicking human chromoblastomycosis (63). Similar histopathology was reported in a reticulated python (*Python reticulatus*) with a severe ulcerative dermatitis on the ventral scales (64) and in a boa constrictor (*Constrictor constrictor*) (65). Manharth et al. described phaeohyphomycosis in a captive Galapagos tortoise (*Geochelone nigra*) caused by an *Exophiala* species (now identified as *E.*

*equina*), which had spread to the lungs and eyes (66). Joyner et al. explored a subcutaneous inflammatory mass in an eastern box turtle (*Terrapene carolina*) due to *Exophiala jeanselmei* (67). Gross necropsy revealed a firm, encapsulated subcutaneous mass filled with dark brown-black, friable necrotic material of the distal right hind limb. Microscopically, the mass was characterized by a granulomatous inflammatory process with numerous multinucleated histiocytic giant cells. Brown-pigmented fungal hyphae and conidia were present within necrotic centers and associated with multinucleated cells (Fig. 4).

In a study by Stringer et al. (68), infection of bones in an Aldabra tortoise (*Geochelone gigantea*) presenting with a deep flaking area of the carapace (dorsal section of the shell) was reported. Histological examination of biopsy specimens from this area revealed phaeohyphomycosis of the superficial keratinized layers. After several weeks of regular debridement, deep bone involvement was evident and was confirmed through histological examination. PCR analysis of extracted DNA from the fixed tissue block identified the fungus as *Exophiala oligosperma* (68). In an older report, *Cladosporium* species were isolated from granulomatous lesions

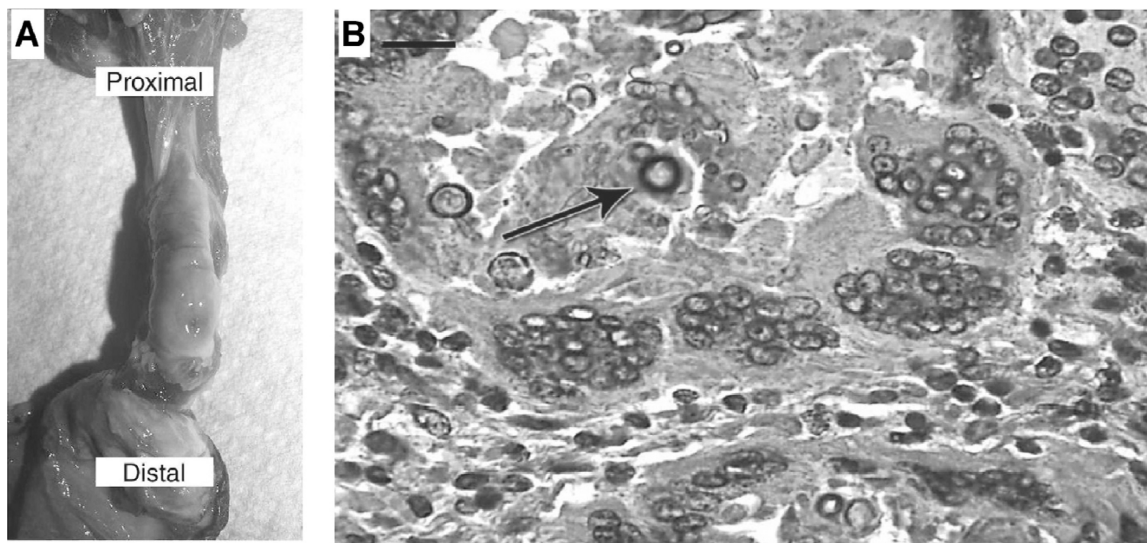


FIG 4 Skin of an Eastern box turtle with cutaneous phaeohyphomycosis due to an *Exophiala* sp. (Reproduced from reference 67 with permission of the publisher.) (A) Necroscopic observation of the right hind limb showed that skin is reflected distally to expose a subcutaneous mass. Small opening, edema, and pigmentation are demonstrated in the caudodistal portion of the capsule. (B) A histopathological section of lesion shows the granuloma with peripheral multinucleated histiocytic giant cells and a necrotic center with brown-pigmented fungal hyphae and conidia (arrow). Hematoxylin and eosin staining was used. Scale bar, 0.01 mm.

from the mandible of an adult anaconda (*Eunectes mutinuous*) (69), but this identification is questionable.

In a study by Weitzman et al. (70), *Ochroconis humicola* was isolated from foot lesions in a tortoise, *Terrapine carolina* var. *carolina*. Dematiaceous hyphae were observed in KOH preparations of the biopsy specimen and in stained preparations (70).

## DISEASES IN WARM-BLOODED VERTEBRATES

### Poultry and Wild Birds

Infections by black fungi of the *Chaetothyriales* are absent in birds, but members of *Ochroconiales* have repeatedly been reported (71, 72). Most infections occur sporadically in wild birds maintained in captivity, but at times they may take the form of outbreaks in poultry. Transmission may then occur by inhalation of fungal elements from contaminated litter.

The pathogenicity of fungal species in birds seems to be of a basically different nature from that in amphibians and reptiles. For example, *Ochroconis gallopava* is a thermotolerant dematiaceous fungus with a maximum growth temperature of 50°C. This fungus is generally found in warm habitats such as hot springs and thermal soils and causes subcutaneous and systemic mycosis (encephalitis) in poultry and other birds (20, 71–74). Infections have been reported in birds, in which the body temperature is much higher (>40°C) than that in mammals, independent of their immunological status. However, some reports concerned 1-day-old chicks having an immature immunity.

A significant neurotropic potential of *O. gallopava* has been well described in epidemic encephalitis in turkeys (*Meleagris gallopavo*) less than 1 year old (71, 72, 75, 76). In these reports, epidemic encephalitis occurred in hundreds of turkeys and chickens from the same flocks. Investigators were able to reproduce the infection experimentally by inoculating *Ochroconis gallopava* into the bird's respiratory tract; the resultant central nervous system (CNS) disease mimicked the naturally acquired infection. Cere-

bral phaeohyphomycosis also has been recognized in other species, including gray-winged trumpeters (*Psophia crepitans*) and quail chicks (*Coturnix* spp.) (77, 78).

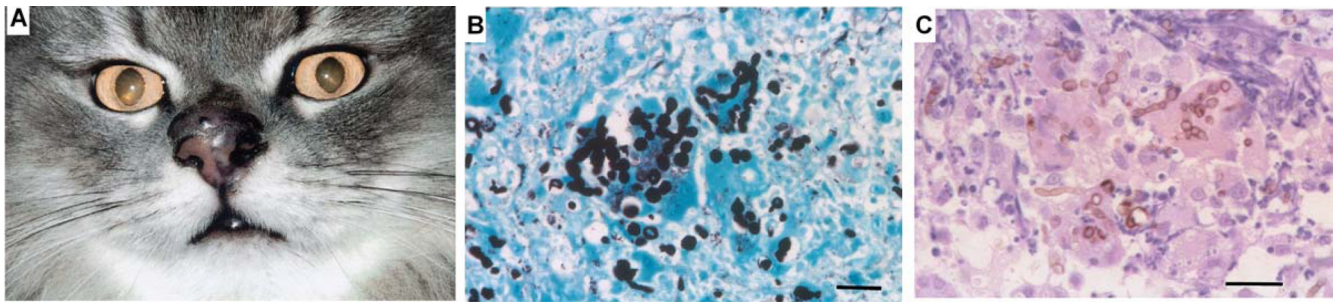
In a report by Salkin et al., *Ochroconis gallopava* was found to cause fatal encephalitis in a captivity-bred snowy owl chick (*Nyctea scandiaca*) (74). The healthy bird showed an acute onset of unusual neurological signs, i.e., the sudden development of ataxia, severe intermittent torticollis, and rigidity of the legs with repeated rocking backward to the point of falling over. Microscopic examination of sections of the brain stained with hematoxylin and eosin (H&E) revealed widespread invasion with septate, melanized hyphae.

### Cats and Dogs

Numerous reports are available about phaeohyphomycoses in cats and dogs, where cats seem to be somewhat more susceptible than other carnivores (79). Reports of deep infections in cats include nasal (80), renal (81), and ocular (82) involvement, as well as cerebellar infection (83). Cutaneous, subcutaneous, and systemic phaeohyphomycoses due to *Cladophialophora bantiana*, *Phialophora verrucosa*, *Fonsecaea pedrosoi*, *Exophiala spinifera*, *Alternaria alternata*, and *A. infectoria* have been documented in cats (79, 84–92).

In a study by Abramo et al., a domestic shorthair cat presented with a history of breathing difficulty due to an edematous swelling on the dorsum of the nose and on the left side of the muzzle, which also affected the nostril (86). Histological examination of the nodule revealed a cystic granulomatous dermatitis characterized by neutrophils, macrophages, and giant cells. Pigmented, yeast-like fungus cells of *Cladophialophora bantiana* and hyphal elements were easily identified in hematoxylin-eosin-stained tissue sections (Fig. 5). Similarly, another case of fatal systemic phaeohyphomycosis in a cat was reported by Elies et al. and was due to *Cladophialophora bantiana* (79). The authors identified numerous pigmented





**FIG 5** Skin of a cat with cutaneous phaeohyphomycosis due to *Cladophialophora bantiana*. (A) Swollen, edematous, and dark-pigmented nodules on the dorsum of the nose and left nostril. (Reproduced from reference 86 with permission of the publisher.) (B) Several yeast-like fungus cells and hyphal fungal elements. Grocott staining was used. Scale bar, 0.02 mm. (C) Brown-pigmented, short unbranched hyphal elements and yeast-like fungus cells inside macrophages and giant cells. Hematoxylin and eosin staining was used. Scale bar, = 0.02 mm.

and septate hyphae after dissecting scattered black granular necrotic areas throughout the liver (Fig. 6).

Miller examined histological slides corresponding to 77 cases of nodular granulomatous skin disease associated with fungal infection in cats in the United Kingdom (93). Based on the aspect of the fungal elements, initial histological diagnoses were hyalohyphomycosis (64 cases), phaeohyphomycosis (5 cases), and dermatophytic pseudomycetoma (8 cases). All cases of hyalohyphomycosis were at first suspected to be alternariosis based on common features, including the anatomical distribution of lesions (48 of 64 cases involved the nostril and bridge of nose, face, and ears), pattern of histological changes, and, of course, results of fungal culture. Cases that were initially diagnosed as phaeohyphomycosis were histologically similar to those of alternariosis, except the causative organisms were deeply pigmented brown and had a variety of morphologies that were different from those of *Alternaria*. These findings indicate that alternariosis is by far the most common nodular fungal skin disease of cats in the United Kingdom. A recent investigation by Bernhardt et al. indicated that the same situation probably occurs in cats in Germany (94). In a study by Chermette et al., *Exophiala attenuata* was also reported as the agent of nasal granuloma in a cat (95).

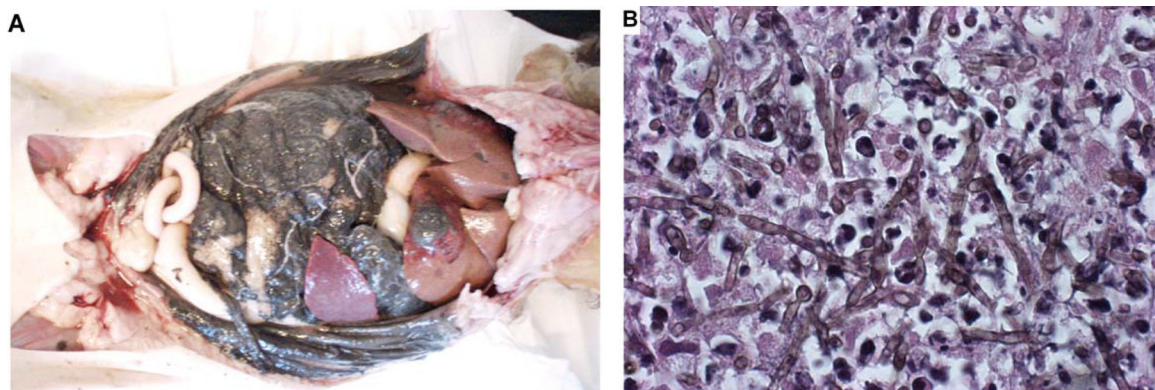
*Cladophialophora bantiana* was isolated from a wild carnivore (snow leopard, *Panthera uncia*), underlying canine distemper with spastic paralysis of the hind legs and inability to defecate and

urinate. Pigmented hyphae were numerous throughout the lesions and occasionally within lateral ventricles of brain (97, 98).

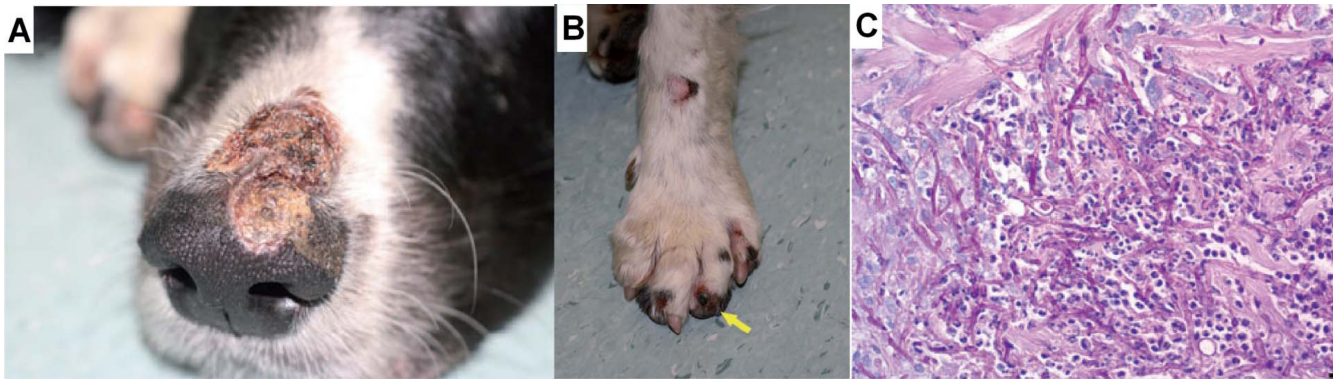
*Cladosporium* species have been reported from feline phaeohyphomycosis in cats (83, 84, 99, 100), but the identification of some of these may be questionable. In a study by Bostock et al., a rapidly growing subcutaneous nodule excised from the nose of a domestic shorthair cat was found to contain a granuloma caused by *Exophiala jeanselmei* (99). Recently, *Fonsecaea multimorphosa* from the cerebrum of an Australian spayed female cat that showed circling and incoordination was described (101).

Another neurotropic characteristic of melanized fungi has been found in a study by Padhye et al., who identified *Ochroconis gallopava* as the causal agent of fatal encephalitis in a young cat (102). The etiologic fungus was isolated from the brain and disseminated lesions in the lungs and the mesenteric lymph nodes. Histological examination of the brain, lung, and mediastinal lymph node lesions revealed large numbers of pigmented, septate, branched hyphal elements with swollen intercalary and terminal vesicles and short chains of moniliform hyphal cells. Cultures of the mediastinal lymph nodes yielded *O. gallopava*.

Canine systemic phaeohyphomycosis may occur due to *Ochroconis gallopava* or *Bipolaris spicifera* (103, 104). Black yeast infections in dogs cause mainly cerebral infection (encephalitis), osteomyelitis, or nephritis (105, 106). Clinical and histopathological findings for brain infections in dogs are similar to those for infec-



**FIG 6** Abdominal cavity of a cat with fatal systemic phaeohyphomycosis due to *Cladophialophora bantiana*. (Reproduced from reference 79 with permission of the publisher.) (A) At necropsy, the serosal surfaces were covered by a black granular substance, and necrotic foci are scattered throughout the liver. (B) Numerous pigmented and septate hyphae in a necrotic area. Hematoxylin and eosin staining was used.



**FIG 7** Skin of a dog with cutaneous infection due to *Alternaria infectoria*. (Reproduced from reference 87 with permission of the publisher.) (A) A large skin lesion localized over the dorsal muzzle, covered with crust and draining a small amount of purulent exudates. (B) The left forefoot, showing a number of erosive and crusty lesions and, on the fourth digit, onychorrhexis and blackening of the corium (arrow). (C) Histopathological section of ulcerated lesion on the lateral left thigh, which shows the presence of many fungal hyphae and sporulating body-like forms in the section. Periodic acid-Schiff staining was used. Scale bar, 0.02 mm. Magnification,  $\times 400$ .

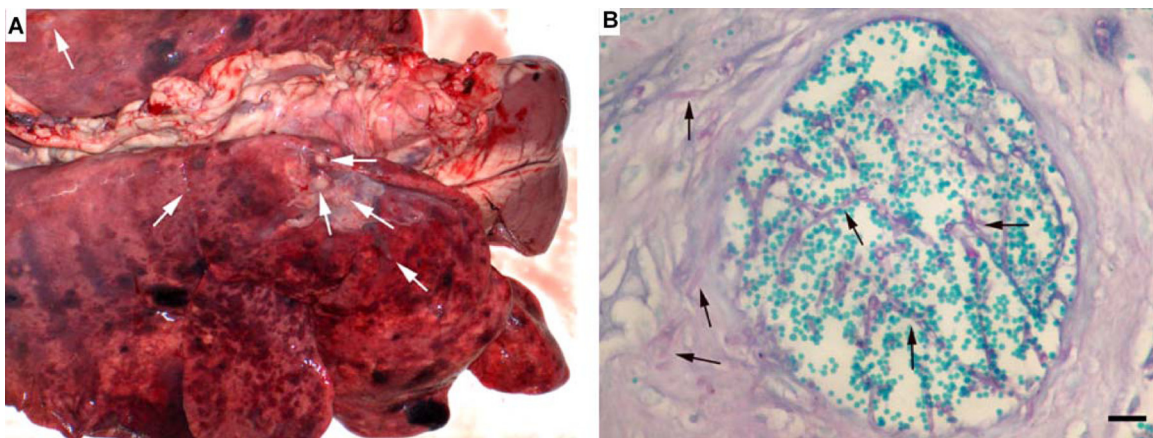
tions in humans. Lesions vary from multifocal encapsulated abscesses to pyogranulomatous inflammation.

In a recent study by Poutahidis et al., *Cladosporium cladosporioides* from a German shepherd dog with granulomatous encephalitis and nephritis was reported (107). In addition to systemic infections, *Cladophialophora bantiana* was also isolated as the main cause of eumycetoma in a dog (108). Macroscopic black granules were visible on the ribs, and direct microscopic examination revealed their fungal origin. Cultures yielded pure colonies of *C. bantiana*.

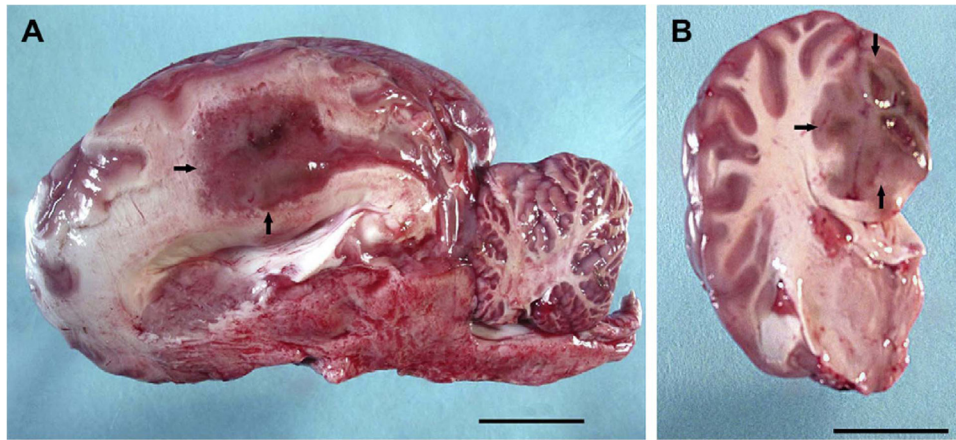
In another study by Dedola et al., *Alternaria infectoria* was isolated from multiple, purulent, crusting, and erosive to ulcerative lesions over different body areas in a dog under therapeutic immunosuppression (87). Onychorrhexis had occurred on digits, and the underlying corium had blackened (Fig. 7). There were also proliferative and black plaque-like lesions in the mouth. Thick-walled fungal hyphae were detected in impression smears, which were further identified as *A. infectoria* by sequencing the internal transcribed spacer 1 (ITS1) region of the rRNA gene.

### Ruminants and Equines

Only a few cases of ruminant and equine phaeohyphomycosis have been reported in the literature. Haligur et al. identified severe systemic phaeohyphomycosis with pulmonary signs of infection due to *Cladosporium cladosporioides* in merino sheep (14). The sheep were kept under insufficient management conditions in a pen that was humid and overcrowded. The animals had signs of respiratory distress, coughing, fever, and anorexia. All diseased animals died. At necropsy, abnormalities were confined to the lung, abomasum (the fourth and final stomach compartment), lymph nodes, kidneys, liver, and heart, but most of the lesions were localized in the lung and abomasum (Fig. 8). Granulomatous foci were flesh colored, regularly shaped, from 0.2 to 1 cm in size, and purulent. Severe hemorrhages were observed in the lungs, and vasculitis with thrombosis was apparent in various organs, which is suggestive of hematogenous dissemination. Cerebral phaeohyphomycosis was diagnosed in a camelid Huacaya alpaca (*Vicugna pacos*) (13). The fungal agent was identified as *Cladophialophora*



**FIG 8** Lung (A) and abomasum (B) of a merino sheep with fatal systemic phaeohyphomycosis due to *Cladosporium cladosporioides*. (Reproduced from reference 14 with kind permission from Springer Science + Business Media.) (A) Numerous flesh-colored, regularly shaped granulomatous foci in a lung, ranging from 200 to 1,000  $\mu\text{m}$  (arrows). (B) Fungal agent in an abomasal vessel. Periodic acid-Schiff staining was used. Scale bar, 0.1 mm.



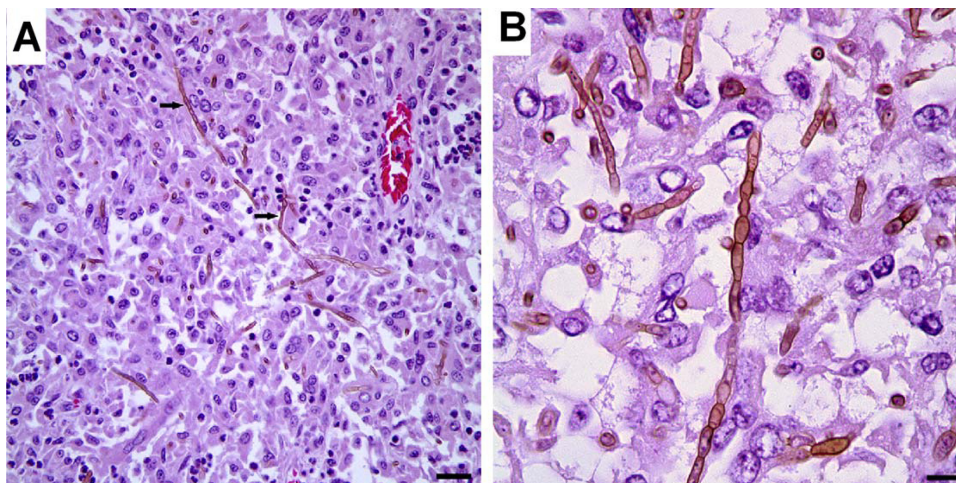
**FIG 9** Brain of a ruminant, huacaya alpaca (*Vicugna pacos*) with cerebral phaeohyphomycosis due to *Cladophialophora bantiana*. (Reproduced from reference 13 with permission of Elsevier.) (A) A parasagittal section of the brain demonstrates a 2.5- by 2-cm, fairly well-demarcated, slightly firm, red to gray mass dorsal to the corpus callosum and extending from the level of the post-cruciate gyrus caudally to the level of the occipital lobe (arrows). Scale bar, 2,000 mm. (B) A cross section of the left cerebral hemisphere at the level of the thalamus shows that the mass effaces the neuroparenchyma of the cingulate gyrus and extends into the corona radiata and adjacent gyri (arrows). Scale bar, 2,000 mm.

*bantiana* by sequencing. Lesions were limited to the cerebrum and were well demarcated, firm, mottled, pale gray to brown red, and with a granular texture, centered on the left and right cingulate gyri (Fig. 9). Microscopically, granulomatous and intralésional necrotizing meningoencephalitis was observed (Fig. 10).

Equine skin disease may take the form of a chromomycosis-like infection. Abid et al. (109) reported a sharply delimited, firm, brown-black dermal nodule at the right tuber ischium of a horse. Microscopically, the dermis of the excised specimen had multiple pyogranulomas, many of which contained thick-walled, dark brown fungal elements, some with internal septation compatible with muriform cells (109).

Genovese et al. described lymphoid follicle formation in facial nodules of an infected horse due to *Alternaria alternata* (110). The most striking feature common to all lesions was the infiltration of

mature lymphocytes. Even the early lesions sampled did not show distinct pyogranuloma formation but did show a very distinct lymphoid component. The lesions were composed predominantly of small, mature lymphocytes admixed with plasma cells, histiocytes, and neutrophils in smaller numbers. A few plasma cells contained immunoglobulin-containing eosinophilic inclusions (Russell bodies). Lymphoid follicles with germinal centers were prominent in all but small, early lesions. Small aggregates of neutrophils were surrounded by macrophages and formed indistinct pyogranulomas. Periodic acid-Schiff (PAS)-stained sections revealed fungal hyphae (Fig. 11). In contrast to that study, in a case described by Coles et al., the inflammation associated with a fungal infection due to *Alternaria alternata* (reported under the obsolete name *A. tenuis*) was pyogranulomatous in multiple dermal nodules on the chest, head, and legs of a horse (111).



**FIG 10** Brain of a ruminant, huacaya alpaca (*Vicugna pacos*), with cerebral phaeohyphomycosis due to *Cladophialophora bantiana*. (Reproduced from reference 13 with permission of Elsevier.) (A) A photomicrograph of the cerebral granuloma shows that sheets of epithelioid macrophages, multinucleated giant cells, and rare neutrophils surround intracellular and extracellular pigmented fungal hyphae (arrows). Hematoxylin and eosin staining was used. Scale bar, 0.025 mm. (B) A histopathological section of brain shows brown septate hyphae with nonparallel walls, which are 4 by 6 mm. Hematoxylin and eosin staining was used. Scale bar, 0.01 mm.

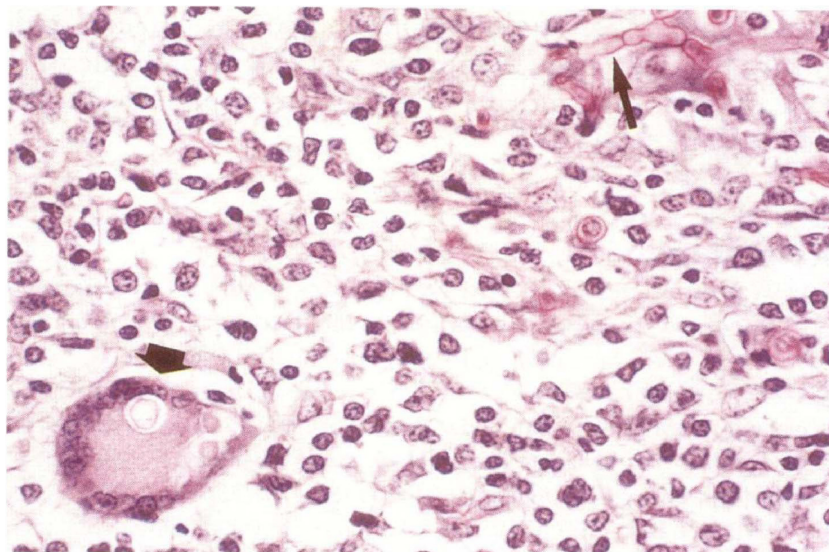


FIG 11 Skin from a horse with cutaneous nodular phaeohyphomycosis due to *Alternaria alternata*. (Reproduced from reference 110 with permission of BMJ Publishing Group Ltd.) A histopathological section from a skin ulcer shows a Langhans-type giant cell containing fungal hyphae (arrow) and extracellular hyphae (arrowhead). Periodic acid-Schiff staining was used. Magnification,  $\times 400$ .

Cabanes et al. reported multifocal areas of alopecia and scaling due to *Alternaria alternata* affecting the skin of the head and neck of a mare (112). Systemic phaeohyphomycosis occurred in a young adult zebra (*Equus grevyi*) with a history of a sudden onset of weight loss, lethargy, and hypothermia (113). Lesions consisted of focal pyogranulomatous pneumonia and myocarditis. Pigmented fungal hyphae were observed in the lungs, whereas the heart contained only yeast forms.

#### COMPARATIVE PATHOGENICITIES OF BLACK YEASTS IN ANIMALS

In humans, infections by most groups of melanized fungi occur in immunocompromised hosts, except in the case of black members of the order *Chaetothyriales*, where all type of infections frequently occur in healthy individuals. Although rare, invasive infections may take a fatal course (114).

Different animal groups harbor various fungal opportunist pathogens. In invertebrates and cold-blooded vertebrates with a moist or mucous tegument or having a water-associated life style, black yeast (*Chaetothyriales*) infections are prevalent. For these animals, the skin is a major organ, and microbial disintegration frequently leads to death. This also holds true for waterborne reptiles, such as turtles, whereas terrestrial reptiles have a thick, dry, water-repellent skin and are much more often subject to infection by phylogenetically ancestral dermatophyte species (genus *Chrysosporium*, order *Onygenales*). Birds and mammals have a protected, water-repellent coverage, and their black yeast infections are unusual. Cutaneous infections mostly involve dermatophytes, while *Aspergillus* (order *Eurotiales*) is frequently observed in the airways, especially in birds. *Alternaria* (*Pleosporales*) and *Ochroconis* infections may be encountered in healthy as well as debilitated hosts, such as wild animals kept in captivity; these infections are cutaneous or systemic, respectively.

The melanized members of *Pleosporales*, *Capnodiales*, and *Ochroconis* are found mostly in the environment as plant pathogens, saprobes on plant debris, or colonizing inert rocks, and ver-

tebrate pathogenicity in each species is highly unusual. In contrast, the order *Chaetothyriales* includes a large number of species which are isolated from human and animal hosts. Several taxa are not even known outside the host. Therefore, the virulence of this order is much more pronounced. All black fungi are obligatorily melanized, and thus melanin alone does not explain this apparent intrinsic virulence. Thermotolerance is not a decisive factor either, since many hosts of *Chaetothyriales* are cold-blooded. Thermotolerance determines the choice of host: species with maximum growth temperatures of 27 to 33°C may cause diseases in cold-blooded animals, whereas those growing at up to 40°C may cause systemic infections in mammals.

Besides integumental barriers, the complexity of the immune system determines the type of tissue response. Crustaceans have poorly developed innate immunity and no adaptive immunity. An absence of advanced immune responses, such as granuloma formation or a significant inflammatory response, is observed in systemic infections in fish, seahorses, and crabs. In the case of invasive infection, hyphae grow densely and regularly. Primitive fish such as seahorses, with poorly developed innate as well as adaptive immunity, show similar histopathology. Granulomata with lymphocytes, granulocytes, and giant cells are observed only in higher vertebrates, which are equipped with fully developed innate and adaptive cellular immunity.

#### DIAGNOSIS AND IDENTIFICATION

Diagnosis of infections due to black yeasts at present still requires direct microscopy, culture, histopathology, and mostly also molecular analysis for reliable identification down to the species level (2, 115–117). Fungi with similar morphology may be phylogenetically remote from each other, which has a large impact on evaluation of the clinical course, appropriate therapy, and prophylaxis. For example, saprobic *Cladosporium* species in the past may have been confused with the superficially similar pathogens *Fonsecaea* and *Cladophialophora*. Verification of fungal identity by a reference laboratory is required.

Appropriate sampling, transport, and processing procedures are important considerations to demonstrate melanized fungi in tissue and further their identification in culture (3). Collecting specimens from the source of infection is the most useful approach; however, specimens obtained from areas peripheral to the site of infection, such as blood cultures in hematogenously disseminated disease, may also be useful if the lesion is not accessible (3). Such appropriate sampling procedures have been reported by different investigators (118). In addition, the guidelines regarding the handling of potentially infectious fungi in the laboratory setting should be followed (119, 120). Gross examination may occasionally reveal evidence of melanized fungi as well (Fig. 5). Gram stain, different concentrations of KOH, and the fluorescent calcofluor white stain are the most commonly used methods for the direct examination of specimens (121).

Various selective as well as nonselective media can be used for culture and isolation. A nonselective medium frequently employed is Sabouraud dextrose agar (SDA). Selective media include those containing cycloheximide, media enriched for fastidious organisms such as brain heart infusion (BHI) agar, and also media containing antimicrobial agents to suppress bacteria in specimens collected from nonsterile sites (3, 118, 122).

For histopathology, several types of staining can be used for the demonstration of black yeasts, such as hematoxylin and eosin (H&E), which demonstrates pigmentation in hyphae that are strongly melanized, the melanin Fontana-Masson stain only for light pigmentation, Periodic acid-Schiff (PAS) stain, which is frequently preferred over H&E due to the more vivid colors of hyphae (which stain a bright pink-purple against a green background), and Gomori methenamine silver (GMS) stain for the dramatic visualization of hyphae as dark elements against a green background (123).

Not only does histopathology allow differentiation from other types of disease, including bacterial or foreign body granuloma or squamous cell carcinoma and melanoma, but the presence of melanized hyphae, budding cells, muriform cells, or hyaline swollen cells aids in establishment of the type of disease and the etiologic agent. The rate of successful culturing of fungi from histopathologically positive tissues may be as low as 50% (124). A small number of melanized fungi, e.g., *Ochroconis gallopava* and *Exophiala spinifera*, possess sufficient features for phenotypic characterization. For most species, sequencing of the rDNA internal transcribed spacer (ITS) is necessary. Zeng and de Hoog stated that this fragment at present is sufficient for reliable identification of most black yeast species in *Chaetothyriales* (125). In the remaining orders (*Pleosporales* and *Capnodiales*), only occasional agents are noted, which are sufficiently remote from each other to allow reliable identification with the ITS. In a study by Lau et al., a panfungal PCR assay targeting the ITS1 region of fungi was described, which was able to detect several species of black fungi from fresh, formalin-fixed, or paraffin-embedded tissue specimens, including *Exophiala* spp (126).

## TREATMENT AND CONTROL

In the last 2 decades, significant progress in the development of antifungal agents has been made, and the number of available antifungal drugs has increased by 30% since 2000 (127). Despite the availability of various systemic antifungals, griseofulvin, which is the only antifungal approved for systemic administration by the Food and Drug Administration (FDA) for veterinary use, partic-

ularly dermatophytosis, is not efficacious against black fungi. Nowadays polyenes, azoles, and echinocandins are the most popular groups of antifungals used for treatment of black yeast infection in animals. From these groups, a variety of systemic antifungals are available, such as amphotericin B, itraconazole, voriconazole, posaconazole, caspofungin, and anidulafungin.

Diseases caused by black fungi are difficult to treat because of their recalcitrant nature, possibly enhanced by the presence of melanin in the cell wall. Infections are chronic and in humans have been observed to reside in tissue for decades (128). Culture and susceptibility testing may provide useful information for selecting appropriate treatment protocols. Black fungi are susceptible to most currently used antifungals (129–131). For instance, on the basis of *in vitro* results and the findings of previous clinical studies, posaconazole and the new azole isavuconazole seem to be good alternatives to amphotericin B as the standard treatment for *C. bantiana* cerebral infections (132). In a study by Feng et al., susceptibility testing of *Phialophora* strains yielded low MIC values for itraconazole, voriconazole, posaconazole, and micafungin, while most strains had high MICs for fluconazole and amphotericin B (133).

The *in vitro* susceptibility of clinical isolates of *Fonsecaea* spp. to antifungal drugs was investigated (134). The resulting MICs, in increasing order, were as follows: posaconazole, 0.063 mg/liter; itraconazole, 0.125 mg/liter; isavuconazole, 0.25 mg/liter; voriconazole, 0.5 mg/liter; amphotericin B, 2 mg/liter; caspofungin, 2 mg/liter; anidulafungin, 2 mg/liter; and fluconazole, 32 mg/liter. This indicates that azole antifungals could be better therapeutic options. However, despite antifungal treatment and surgery, relapses are often noted. Importantly, for some infections, such as *Ochroconis gallopava*, the best antifungal agent and duration of therapy have not yet been defined and need further investigation.

Prophylaxis in animals probably mainly requires prevention of stress. Management practices such as handling, crowding, transporting, fluctuating temperatures, poor water and stable quality, and other husbandry deficiencies may predispose for fungal disease. For waterborne animals, this particularly involves transfer to new basins and large-scale fish farming in the open sea (135). In animal husbandry, poor stable and pen conditions have led to pseudoepidemics in sheep and poultry. Therefore, both the animals and the environment should be treated completely in order to control fungal infection and prevent the possibility of transmission to humans. In addition, similar to the management strategies in other areas of veterinary medicine, education and prevention medicine should be applied by veterinarians and other health professionals to prevent infection and also reduce the risk of zoonosis.

## CONCLUDING REMARKS

To the best of our knowledge, black fungi are not on the list of clinically important zoonotic fungi. In animals, three different epidemiological situations can be distinguished. The first feature is single infection, which may occur sporadically in otherwise healthy hosts. Such infections are found mostly in mammals and are frequently subcutaneous or cerebral, and the systemic infections bear much similarity to human primary cerebral infections by melanized fungi (20). Cerebral infections are mostly fatal, and the source and route of infection are currently unknown. Unlike in humans, traumatic infections in animals are uncommon. A second epidemiological profile is represented by pseudoepidemics, i.e., infection of a large host population due to a common

source. It is often observed and generally hypothesized that the susceptible animals are under stress, e.g., due to poor housing conditions of mammals or change of basins in the case of fish. Third, true epidemics may occur, which is probably the case with lethargic crab disease.

The relatively frequent infection of amphibians is remarkable. They produce aromatic toxins in their skin, and it has been hypothesized that the presence of alkyl benzenes in host tissue may enhance susceptibility to black yeast infection. In mammals the relation with this type of compound would be expressed by neurotropism, given the alkylbenzene structure of several neurotransmitters.

## ACKNOWLEDGMENTS

We thank Osamu Kurata, Cindy Lee Van Dover, and Jonathan M. Sleeman for kind preparation of the original versions of figures, and we thank Cindy Lee Van Dover, Salvatore Frasca, Jr., Osamu Kurata, Jonathan M. Sleeman, Jim Mills, F. Abramo, L. Elies, Carla Dedola, Mehmet Haligur, Gerry M. Dorrestein, C. Frank, and L. M. Genovese for permission to reprint figures.

This publication was prepared by Seyedmojtaba Seyedmousavi, Jacques Guillot, and G. Sybren de Hoog as a collaborative study between the ISHAM Veterinary Mycology and Black Yeasts Working Groups.

## REFERENCES

- McGinnis MR. 1983. Chromoblastomycosis and phaeoophomycosis: new concepts, diagnosis, and mycology. *J. Am. Acad. Dermatol.* 8:1–16.
- Ajello L. 1986. Hyalohyphomycosis and phaeoophomycosis: two global disease entities of public health importance. *Eur. J. Epidemiol.* 2:243–251.
- Revankar SG, Sutton DA. 2010. Melanized fungi in human disease. *Clin. Microbiol. Rev.* 23:884–928.
- Salfelder K. 1990. Atlas of fungal pathology. Kluwer Academic Publishers, Dordrecht, Netherlands.
- de Hoog GS, Vicente VA, Najafzadeh MJ, Harrak MJ, Badali H, Seyedmousavi S. 2011. Waterborne *Exophiala* species causing disease in cold-blooded animals. *Persoonia* 27:46–72.
- de Hoog GS. 1993. Evolution of black yeasts: possible adaptation to the human host. *Antonie Van Leeuwenhoek* 63:105–109.
- de Hoog GS, McGinnis MR. 1987 Ascomycetous black yeasts, p 187–199. In de Hoog GS, Smith MT, Weijman ACM (ed), *The expanding realm of yeast-like fungi*. Elsevier, Amsterdam, Netherlands.
- Ruibal C, Gueidan C, Selbmann L, Gorbushina AA, Crous PW, Groenewald JZ, Muggia L, Grube M, Isola D, Schoch CL, Staley JT, Lutzoni F, de Hoog GS. 2009. Phylogeny of rock-inhabiting fungi related to Dothideomycetes. *Stud. Mycol.* 64:123–133S127.
- Yanong RP. 2003. Fungal diseases of fish. *Vet. Clin. North Am. Exot. Anim. Pract.* 6:377–400.
- Densmore CL, Green DE. 2007. Diseases of amphibians. *Ilar J.* 48:235–254.
- Boeger WA, Pie MR, Ostrensky A, Patella L. 2005. Lethargic crab disease: multidisciplinary evidence supports a mycotic etiology. *Mem. Inst. Oswaldo Cruz* 100:161–167.
- Boeger WA, Pie MR, Vicente V, Ostrensky A, Hungria D, Castilho GG. 2007. Histopathology of the mangrove land crab *Ucides cordatus* (Ocyrodidae) affected by lethargic crab disease. *Dis. Aquat. Organ.* 78:73–81.
- Frank C, Vemulapalli R, Lin T. 2011. Cerebral phaeoophomycosis due to *Cladophialophora bantiana* in a Huacaya alpaca (*Vicugna pacos*). *J. Comp. Pathol.* 145:410–413.
- Haligur M, Ozmen O, Dorrestein GM. 2010. Fatal systemic cladosporiosis in a merino sheep flock. *Mycopathologia* 170:411–415.
- de Hoog GS, Guarro J, Gene J, Figueras MJ. 2009. Atlas of clinical fungi: the ultimate benchtool for diagnostics. A pilot version of the 3rd ed, CD-ROM. Centraalbureau voor Schimmelcultures, KNAW Fungal Biodiversity Centre/Universitat Rovira i Virgili, Utrecht, Netherlands.
- Hibbett DS, Binder M, Bischoff JF, Blackwell M, Cannon PF, Eriksson OE, Huhndorf S, James T, Kirk PM, Lücking R, Thorsten Lumbsch H, Lutzoni F, Matheny PB, McLaughlin DJ, Powell MJ, Redhead S, Schoch CL, Spatafora JW, Stalpers JA, Vilgalys R, Aime MC, Aptroot A, Bauer R, Begerow D, Benny GL, Castlebury LA, Crous PW, Dai YC, Gams W, Geiser DM, Griffith GW, Gueidan C, Hawksworth DL, Hestmark G, Hosaka K, Humber RA, Hyde KD, Ironside JE, Koljalg U, Kurtzman CP, Larsson KH, Lichtwardt R, Longcore J, Miadlikowska J, Miller A, Moncalvo JM, Mozley-Standridge S, Oberwinkler F, Parmasto E, Reeb V, Rogers JD, Roux C, Ryvarden L, Sampaio JP, Schussler A, Sugiyama J, Thorn RG, Tibell L, Untereiner WA, Walker C, Wang Z, Weir A, Weiss M, White MM, Winka K, Yao YJ, Zhang N. 2007. A higher-level phylogenetic classification of the Fungi. *Mycol. Res.* 111:509–547.
- Nosanchuk JD, Casadevall A. 2003. The contribution of melanin to microbial pathogenesis. *Cell. Microbiol.* 5:203–223.
- Prenafeta-Boldu FX, Summerbell R, de Hoog GS. 2006. Fungi growing on aromatic hydrocarbons: biotechnology's unexpected encounter with biohazard? *FEMS Microbiol. Rev.* 30:109–130.
- Zhao J, Zeng J, de Hoog GS, Attili-Angelis D, Prenafeta-Boldu FX. 2010. Isolation and identification of black yeasts by enrichment on atmospheres of monoaromatic hydrocarbons. *Microb. Ecol.* 60:149–156.
- Horre R, de Hoog GS. 1999. Primary cerebral infections by melanized fungi: a review. *Stud. Mycol.* 43:176–193.
- Vicente VA, Orelis-Ribeiro R, Najafzadeh MJ, Sun J, Guerra RS, Miesch S, Ostrensky A, Meis JF, Klaassen CH, de Hoog GS, Boeger WA. 2012. Black yeast-like fungi associated with Lethargic Crab Disease (LCD) in the mangrove-land crab, *Ucides cordatus* (Ocyrodidae). *Vet. Microbiol.* 158:109–122.
- Glaser M. 2003. Interrelations between mangrove ecosystem, local economy and social sustainability in Caeté Estuary, North Brazil. *Wetlands Ecol. Manag.* 11:265–272.
- Alves RRN, Nishida AK. 2003. Socio-economical aspects and environmental perception of Caranguejo-uça *U. cordatus* (L. 1763) (Decapoda, Brachyura) gatherers in the Mamanguape river estuary, northeast Brazil. *Interciencia* 28:36–43.
- Dover CLV, Ward ME, Scott JL, Underdown J, Anderson B, Gustafson, Whalen CME, Carnegie RB. 2007. A fungal epizootic in mussels at a deep-sea hydrothermal vent. *Mar. Ecol.* 28:54–62.
- Vakili NG. 1993. *Exophiala jeanselmei*, a pathogen of earthworm species. *Med. Mycol.* 31:343–346.
- Pare JA. 2003. Fungal diseases of amphibians: an overview. *Vet. Clin. North Am. Exot. Anim. Pract.* 6:315–326.
- Juopperi T, Karli K, De Voe R, Grindem CB. 2002. Granulomatous dermatitis in a spadefoot toad (*Scaphiopus holbrookii*). *Vet. Clin. Pathol.* 31:137–139.
- Fisher MC, Garner TW, Walker SF. 2009. Global emergence of Batrachochytrium dendrobatidis and amphibian chytridiomycosis in space, time, and host. *Annu. Rev. Microbiol.* 63:291–310.
- Daszak P, Berger L, Cunningham AA, Hyatt AD, Green DE, Speare R. 1999. Emerging infectious diseases and amphibian population declines. *Emerg. Infect. Dis.* 5:735–748.
- Miller EA, Montali RJ, Ramsay EC, Rideout BA. 1992. Disseminated chromoblastomycosis in a colony of ornate-horned frogs (*Ceratophrys ornata*). *J. Zoo Wildl. Med.* 23:433–438.
- Bube A, Burkhardt E, Weiss R. 1992. Spontaneous chromomycosis in the marine toad (*Bufo marinus*). *J. Comp. Pathol.* 106:73–77.
- Elkan E, Philpot CM. 1973. Mycotic infections in frogs due to a *Phialophora*-like fungus. *Sabouraudia* 11:99–105.
- Taylor SK, Green DE, Wright KM, Whitaker BR. 2001. Bacterial diseases, p 159–179. In Wright KM, Whitaker BR (ed), *Amphibian medicine and captive husbandry*. Krieger Publishing Company, Malabar FL.
- Cicmanec JL, Ringler DH, Beneke ES. 1973. Spontaneous occurrence and experimental transmission of the fungus, *Fonsecaea pedrosoi*, in the marine toad, *Bufo marinus*. *Lab. Anim. Sci.* 23:43–47.
- Velasquez LF, Restrepo A. 1975. Chromomycosis in the toad (*Bufo marinus*) and a comparison of the etiologic agent with fungi causing human chromomycosis. *Sabouraudia* 13:1–9.
- Otis EJ, Wolke RE, Blazer VS. 1985. Infection of *Exophiala salmonis* in Atlantic salmon (*Salmo salar* L.). *J. Wildl. Dis.* 21:61–64.
- Silphaduang U, Hatai K, Wada S, Noga E. 2000. Cladosporiosis in a tomato clownfish (*Amphiprion frenatus*). *J. Zoo Wildl. Med.* 31:259–261.
- Nyaoke A, Weber ES, Innis C, Stremme D, Dowd C, Hinckley L, Gorton T, Wickes B, Sutton D, de Hoog S, Frasca S, Jr. 2009.

- Disseminated phaeohyphomycosis in weedy seadragons (*Phyllopteryx taeniolatus*) and leafy seadragons (*Phycodurus eques*) caused by species of *Exophiala*, including a novel species. *J. Vet. Diagn. Invest.* 21:69–79.
39. Stoskopf MK. 1993. Fish medicine. WB Saunders Co., Philadelphia, PA.
  40. Langdon JS, McDonald WL. 1987. Cranial *Exophiala pisciphila* in Salmo salar in Australia. *Bull. Eur. Assoc. Fish Pathol. Biol.* 35:117–119.
  41. Gaskins JE, Cheung PJ. 1986. *Exophiala pisciphila*. A study of its development. *Mycopathologia* 93:173–184.
  42. McGinnis MR, Ajello L. 1974. A new species of *Exophiala* isolated from channel catfish. *Mycologia* 66:518–520.
  43. Kurata O, Munchan C, Wada S, Hatai K, Miyoshi Y, Fukuda Y. 2008. Novel *Exophiala* infection involving ulcerative skin lesions in Japanese flounder *Paralichthys olivaceus*. *Fish Pathol.* 43:35–44.
  44. Strongman DB, Morrison CM, McClelland G. 1997. Lesions in the musculature of captive American plaice *Hippoglossoides plaessoides* caused by the fungus *Hormoconis resiniae* (Deuteromycetes). *Dis. Aquat. Organ.* 28:107–113.
  45. Reuter RE, Ham WHJ, Davis S. 2003. *Exophiala* sp. infection in captured King George whiting, *Sillaginodes punctata*. *Bull. Eur. Assoc. Fish Pathol. Biol.* 23:128–134.
  46. Faisal M, Elsayed E, Fitzgerald SD, Silva V, Mendoza L. 2007. Outbreaks of phaeohyphomycosis in the chinook salmon (*Oncorhynchus tshawytscha*) caused by Phoma herbarum. *Mycopathologia* 163:41–48.
  47. Ross AJ, Yasutake WT. 1973. *Scolecobasidium humicola*, a fungal pathogen of fish. *J. Fish Res. Bd. Can.* 32:1648–1652.
  48. Schumann K, Priebe K. 1994. *Ochroconis humicola* causing muscular black spot disease of Atlantic salmon (*Salmo salar*). *Can. J. Bot.* 72:1629–1634.
  49. Ajello L, McGinnis MR, Camper J. 1977. An outbreak of phaeohyphomycosis in rainbow trout caused by *Scolecobasidium humicola*. *Mycopathologia* 62:15–22.
  50. Wada S, Nakamura K, Hatai K. 1995. First case of *Ochroconis humicola* infection in marine cultured fish in Japan. *Fish Pathol.* 30:125–126.
  51. Bhattacharya U. 1988. *Scolecobasidium humicola*, a new fungal fish infection from India. *Environ. Ecol.* 6:532–533.
  52. Doty MS, Slater DW. 1946. A new species of *Heterosporium* pathogenic on young Chinook salmon. *Am. Mid. Natural.* 36:663–665.
  53. Parè JA, Sigler L, Rosenthal KL, Mader DR. 2006. Microbiology: fungal and bacterial diseases of reptiles, p 217–239. In Mader DR (ed), *Reptile medicine and surgery*, vol 2. Saunders Elsevier, St Louis, MO.
  54. Schumacher J. 2003. Fungal diseases of reptiles. *Vet. Clin. North Am. Exot. Anim. Pract* 6:327–335.
  55. Jacobson ER, Cheatwood JL, Maxwell LK. 2000. Mycotic diseases of reptiles. *Semin. Avian Exot. Pet Med.* 9:94–101.
  56. Thomas AD, Sigler L, Peucker S, Norton JH, Nielan A. 2002. *Chrysosporium* anamorph of *Nannizziaopsis vriesii* associated with fatal cutaneous mycoses in the salt-water crocodile (*Crocodylus porosus*). *Med. Mycol.* 40:143–151.
  57. Pare A, Coyle KA, Sigler L, Maas AK III, Mitchell RL. 2006. Pathogenicity of the *Chrysosporium* anamorph of *Nannizziaopsis vriesii* for veiled chameleons (*Chamaeleo calypratus*). *Med. Mycol.* 44:25–31.
  58. Bowman MR, Pare JA, Sigler L, Naeser JP, Sladky KK, Hanley CS, Helmer P, Phillips LA, Brower A, Porter R. 2007. Deep fungal dermatitis in three inland bearded dragons (*Pogona vitticeps*) caused by the *Chrysosporium* anamorph of *Nannizziaopsis vriesii*. *Med. Mycol.* 45:371–376.
  59. Johnson RS, Sangster CR, Sigler L, Hambleton S, Pare JA. 2011. Deep fungal dermatitis caused by the *Chrysosporium* anamorph of *Nannizziaopsis vriesii* in captive coastal bearded dragons (*Pogona barbata*). *Aust. Vet. J.* 89:515–519.
  60. Chinnadurai SK, Devoe RS. 2009. Selected infectious diseases of reptiles. *Vet. Clin. North Am. Exot. Anim. Pract.* 12:583–596.
  61. Cushing A, Pinborough M, Stanford M. 2011. Review of bacterial and fungal culture and sensitivity results from reptilian samples submitted to a UK laboratory. *Vet. Rec.* 169:390.
  62. Taddei S, Dodi PL, Di Ianni F, Cabassi CS, Cavirani S. 2010. Conjunctival flora of clinically normal captive green iguanas (*Iguana iguana*). *Vet. Rec.* 167:29–30.
  63. Jacobson ER. 1984. Chromomycosis and fibrosarcoma in a mangrove snake. *J. Am. Vet. Med. Assoc.* 185:1428–1430.
  64. Frank W, Roester U. 1970. Amphibia as carriers of *Hormiscium* (*Hormodendrum*) dermatitis Kano, 1937, a causative agent of chromoblastomycosis (chromomycosis) in man. *Z. Tropenmed. Parasitol.* 21:93–108.
  65. Frank W. 1976. Mycotic infections in amphibians and reptiles, p 73–88. In Page LA (ed), *Wildlife diseases*. Plenum, New York, NY.
  66. Manharth A, Lemberger K, Mylniczenko N, Pinkerton M, Pessier AP. 2005. Disseminated phaeohyphomycosis due to *Exophiala* species in a Galapagos tortoise, *Geochelone nigra*. *J. Herpetol. Med. Surg.* 15:20–26.
  67. Joyner PH, Shreve AA, Spahr J, Fountain AL, Sleeman JM. 2006. Phaeohyphomycosis in a free-living eastern box turtle (*Terrapene carolina carolina*). *J. Wildl. Dis.* 42:883–888.
  68. Stringer EM, Garner MM, Proudfoot JS, Ramer JC, Bowman MR, Heng HG, Bradway DS. 2009. Phaeohyphomycosis of the carapace in an Aldabra tortoise (*Geochelone gigantea*). *J. Zoo Wildl. Med.* 40:160–167.
  69. Marcus LC. 1971. Infectious diseases of reptiles. *J. Am. Vet. Med. Assoc.* 159:1626–1631.
  70. Weitzman I, Rosenthal SA, Shupack JL. 1985. A comparison between *Dactylaria gallopava* and *Scolecobasidium humicola*: first report of an infection in a tortoise caused by *S. humicola*. *Sabouraudia* 23:287–293.
  71. Ranck FM, Jr, Georg LK, Wallace DH. 1974. Dactylariosis—a newly recognized fungus disease of chickens. *Avian Dis.* 18:4–20.
  72. Georg LK, Bierer BW, Cooke WB. 1964. Encephalitis in turkey poults due to a new fungus species. *Sabouraudia* 3:239–244.
  73. Kralovic SM, Rhodes JC. 1995. Phaeohyphomycosis caused by *Dactylaria* (human dactylariosis): report of a case with review of the literature. *J. Infect.* 31:107–113.
  74. Salkin IF, Dixon DM, Kemna ME, Danneman PJ, Griffith JW. 1990. Fatal encephalitis caused by *Dactylaria constricta* var. *gallopava* in a snowy owl chick (*Nyctea scandiaca*). *J. Clin. Microbiol.* 28:2845–2847.
  75. Blalock HG, Georg LK, Derieux WT. 1973. Encephalitis in turkey poults due to *Dactylaria* (*Diplorhinotrichum*) *gallopava*—a case report and its experimental reproduction. *Avian Dis.* 17:197–204.
  76. Randall CJ, Owen DM, Kirkpatrick KS. 1981. Encephalitis in broiler chickens caused by a hyphomycete resembling *Dactylaria gallopava*. *Avian Pathol.* 10:31–41.
  77. Karesh WB, Russell R, Gribble D. 1987. *Dactylaria gallopava* encephalitis in two grey-winged trumpeters (*Psophia crepitans*). *Avian Dis.* 31:685–688.
  78. Shane SM, Markovits J, Snider TG III, Harrington KS. 1985. Encephalitis attributed to dactylariosis in Japanese quail chicks (*Coturnix coturnix japonica*). *Avian Dis.* 29:822–828.
  79. Elies L, Balandraud V, Boulouha L, Crespeau F, Guillot J. 2003. Fatal systemic phaeohyphomycosis in a cat due to *Cladophialophora bantiana*. *J. Vet. Med.* 50:50–53.
  80. Dhein CR, Leathers CW, Padhye AA, Ajello L. 1988. Phaeohyphomycosis caused by *Alternaria alternata* in a cat. *J. Am. Vet. Med. Assoc.* 193:1101–1103.
  81. Reed C, Fox JG, Campbell LH. 1974. Leukaemia in a cat with concurrent *Cladosporium* infection. *J. Small Anim. Pract.* 15:55–62.
  82. Miller DM, Blue JL, Winston SM. 1983. Keratomycosis caused by *Cladosporium* sp in a cat. *J. Am. Vet. Med. Assoc.* 182:1121–1122.
  83. Mariani CL, Platt SR, Scase TJ, Howerth EW, Chrisman CL, Clemmons RM. 2002. Cerebral phaeohyphomycosis caused by *Cladosporium* spp. in two domestic shorthair cats. *J. Am. Anim. Hosp. Assoc.* 38:225–230.
  84. Pukay BP, Dion WM. 1984. Feline phaeohyphomycosis: treatment with ketoconazole and 5-fluorocytosine. *Can. Vet. J.* 25:130–134.
  85. Beccati M, Vercelli A, Peano A, Gallo MG. 2005. Phaeohyphomycosis by *Phialophora verrucosa*: first European case in a cat. *Vet. Rec.* 157:93–94.
  86. Abramo F, Bastelli F, Nardoni S, Mancianti F. 2002. Feline cutaneous phaeohyphomycosis due to *Cladophialophora bantiana*. *J. Feline Med. Surg.* 4:157–163.
  87. Dedola C, Stuart AP, Ridyad AE, Else RW, van den Broek AH, Choi JS, de Hoog GS, Thoday KL. 2010. Cutaneous *Alternaria infectoria* infection in a dog in association with therapeutic immunosuppression for the management of immune-mediated haemolytic anaemia. *Vet. Dermatol.* 21:626–634.
  88. Dion WM, Pukay BP, Bundza A. 1982. Feline cutaneous phaeohyphomycosis caused by *Phialophora verrucosa*. *Can. Vet. J.* 23:48–49.
  89. Fondati A, Gallo MG, Romano E, Fondevila D. 2001. A case of feline phaeohyphomycosis due to *Fonsecaea pedrosoi*. *Vet. Dermatol.* 12:297–301.
  90. Kettlewell P, McGinnis MR, Wilkinson GT. 1989. Phaeohyphomycosis caused by *Exophiala spinifera* in two cats. *J. Med. Vet. Mycol.* 27:257–264.
  91. McKay JS, Cox CL, Foster AP. 2001. Cutaneous alternariosis in a cat. *J. Small Anim. Pract.* 42:75–78.

92. Roosje PJ, de Hoog GS, Koeman JP, Willemsse T. 1993. Phaeoophomycosis in a cat caused by *Alternaria infectoria* E. G. Simmons. *Mycoses* 36:451–454.
93. Miller RI. 2010. Nodular granulomatous fungal skin diseases of cats in the United Kingdom: a retrospective review. *Vet. Dermatol.* 21:130–135.
94. Bernhardt A, von Bomhard W, Antweiler E, Tintelnot K. 2012. Molecular identification of fungal pathogens in nodular skin lesions in cats. *Mycoses* 55:145.
95. Chermette R, Ferreiro L, De Bievre C, Camadro P, Mialot M, Vauzelle P. 1997. *Exophiala spinifera* nasal infection in a cat and a literature review of feline phaeoophomycosis. *J. Mycol. Med.* 7:149–158.
96. Reference deleted.
97. Janovsky M, Grone A, Ciardo D, Vollm J, Burnens A, Fatzer R, Bacciarini LN. 2006. Phaeoophomycosis in a snow leopard (*Uncia uncia*) due to *Cladophialophora bantiana*. *J. Comp. Pathol.* 134:245–248.
98. Dillehay DL, Ribas JL, Newton JC, Jr, Kwapien RP. 1987. Cerebral phaeoophomycosis in two dogs and a cat. *Vet. Pathol.* 24:192–194.
99. Bostock DE, Coloe PJ, Castellani A. 1982. Phaeoophomycosis caused by *Exophiala jeanselmei* in a domestic cat. *J. Comp. Pathol.* 92:479.
100. Nuttal W, Woodgryer A, Butler S. 1990. Phaeoophomycosis caused by *Exophiala jeanselmei* in a domestic cat. *N. Z. Vet. J.* 38:123.
101. Najafzadeh MJ, Vicente VA, Sun J, Meis JF, de Hoog GS. 2011. *Fonsecaea multimorphosa* sp. nov., a new species of Chaetothyriales isolated from a feline cerebral abscess. *Fungal Biol.* 115:1066–1076.
102. Padhye AA, Amster RL, Browning M, Ewing EP. 1994. Fatal encephalitis caused by *Ochroconis gallopavum* in a domestic cat (*Felis domesticus*). *J. Med. Vet. Mycol.* 32:141–145.
103. Waurzyniak BJ, Hoover JP, Clinkenbeard KD, Welsh RD. 1992. Dual systemic mycosis caused by *Bipolaris spicifera* and *Torulopsis glabrata* in a dog. *Vet. Pathol.* 29:566–569.
104. Singh K, Flood J, Welsh RD, Wycokoff JH, Snider TA, Sutton DA. 2006. Fatal systemic phaeoophomycosis caused by *Ochroconis gallopavum* in a dog (*Canis familiaris*). *Vet. Pathol.* 43:988–992.
105. Lobetti RG. 1996. Leukogram and serum globulin values in two dogs with systemic *Xylohypha bantiana* infection. *J. South Afr. Vet. Assoc.* 67:91–92.
106. Lomax LG, Cole JR, Padhye AA, Ajello L, Chandler FW, Smith BR. 1986. Osteolytic phaeoophomycosis in a German shepherd dog caused by *Phialemonium obovatum*. *J. Clin. Microbiol.* 23:987–991.
107. Poutahidis T, Angelopoulou K, Karamanavi E, Polizopoulou ZS, Douberis M, Latsari M, Kaldrymidou E. 2009. Mycotic encephalitis and nephritis in a dog due to infection with *Cladosporium cladosporioides*. *J. Comp. Pathol.* 140:59–63.
108. Guillot J, Garcia-Hermoso D, Degorce F, Deville M, Calvie C, Dickele G, Delisle F, Chermette R. 2004. Eumycetoma caused by *Cladophialophora bantiana* in a dog. *J. Clin. Microbiol.* 42:4901–4903.
109. Abid HN, Walter PA, Litchfield H. 1987. Chromomycosis in a horse. *J. Am. Vet. Med. Assoc.* 191:711–712.
110. Genovese LM, Whitbread TJ, Campbell CK. 2001. Cutaneous nodular phaeoophomycosis in five horses associated with *Alternaria alternata* infection. *Vet. Rec.* 148:55–56.
111. Coles BM, Stevens DR, Hunter RL. 1978. Equine nodular dermatitis associated with *Alternaria tenuis* infection. *Vet. Pathol.* 15:779–780.
112. Cabanes FJ, Abarca L, Bragulat MR, Bruguera T. 1988. Phaeoophomycosis caused by *Alternaria alternata* in a mare. *J. Med. Vet. Mycol.* 26:359–365.
113. Dillehay DL, Silberman MS. 1991. Systemic Phaeoophomycosis in a Zebra (*Equus grevyi*). *J. Zoo Wildl. Med.* 22:237–240.
114. Revankar SG, Sutton DA, Rinaldi MG. 2004. Primary central nervous system phaeoophomycosis: a review of 101 cases. *Clin. Infect. Dis.* 38:206–216.
115. Balajee SA, Sigler L, Brandt ME. 2007. DNA and the classical way: identification of medically important molds in the 21st century. *Med. Mycol.* 45:475–490.
116. Zeng JS, Sutton DA, Fothergill AW, Rinaldi MG, Harrak MJ, de Hoog GS. 2007. Spectrum of clinically relevant *Exophiala* species in the United States. *J. Clin. Microbiol.* 45:3713–3720.
117. Ferrer C, Colom F, Frases S, Mulet E, Abad JL, Alio JL. 2001. Detection and identification of fungal pathogens by PCR and by ITS2 and 5.8S ribosomal DNA typing in ocular infections. *J. Clin. Microbiol.* 39:2873–2879.
118. Sutton DA. 2007. Specimen collection, transport, and processing: mycology, p 1728–1735. *In* Murray PR, Baron EJ, Jorgensen JH, Landry ML, Pfaller MA (ed), *Manual of clinical microbiology*, 9th ed. ASM Press, Washington, DC.
119. Centers for Disease Control and Prevention. 2009. Biosafety in microbiological and biomedical laboratories, 5th ed. Centers for Disease Control and Prevention, Atlanta, GA.
120. European Community. 2000. Directive 2000/54/EC, p 19. Official Journal of the European Communities. Office for Official Publications of the European Communities, Luxembourg.
121. Ruchel R, Schaffrinski M, Seshan KR, Cole GT. 2000. Vital staining of fungal elements in deep-seated mycotic lesions during experimental murine mycoses using the parenterally applied optical brightener Blankophor. *Med. Mycol.* 38:231–237.
122. Sutton DA. 2008. Basic mycology, p 15–35. *In* Hospenthal DR, Rinaldi MG (ed), *Diagnosis and treatment of human mycoses*. Humana Press, Towata, NJ.
123. Kimura M, McGinnis MR. 1998. Fontana-Masson-stained tissue from culture-proven mycoses. *Arch. Pathol. Lab Med.* 122:1107–1111.
124. Tarrand JJ, Lichterfeld M, Warrach I, Luna M, Han XY, May GS, Kontoyannis DP. 2003. Diagnosis of invasive septate mold infections. A correlation of microbiological culture and histologic or cytologic examination. *Am. J. Clin. Pathol.* 119:854–858.
125. Zeng JS, de Hoog GS. 2008. *Exophiala spinifera* and its allies: diagnostics from morphology to DNA barcoding. *Med. Mycol.* 46:193–208.
126. Lau A, Chen S, Sorrell T, Carter D, Malik R, Martin P, Halliday C. 2007. Development and clinical application of a panfungal PCR assay to detect and identify fungal DNA in tissue specimens. *J. Clin. Microbiol.* 45:380–385.
127. Foy DS, Trepanier LA. 2010. Antifungal treatment of small animal veterinary patients. *Vet. Clin. North Am. Small Anim. Pract.* 40:1171–1188.
128. Najafzadeh MJ, Rezusta A, Cameo MI, Zubiri ML, Yus MC, Badali H, Revillo MJ, de Hoog GS. 2010. Successful treatment of chromoblastomycosis of 36 years duration caused by *Fonsecaea monophora*. *Med. Mycol.* 48:390–393.
129. Badali H, de Hoog GS, Sudhadham M, Meis JF. 2011. Microdilution in vitro antifungal susceptibility of *Exophiala dermatitidis*, a systemic opportunistic. *Med. Mycol.* 49:819–824.
130. Badali H, de Hoog GS, Curfs-Breuker I, Andersen B, Meis JF. 2009. In vitro activities of eight antifungal drugs against 70 clinical and environmental isolates of *Alternaria* species. *J. Antimicrob. Chemother.* 63:1295–1297.
131. Vitale RG, Perez-Blanco M, de Hoog GS. 2009. In vitro activity of antifungal drugs against *Cladophialophora* species associated with human chromoblastomycosis. *Med. Mycol.* 47:35–40.
132. Badali H, de Hoog GS, Curfs-Breuker I, Klaassen CH, Meis JF. 2010. Use of amplified fragment length polymorphism to identify 42 *Cladophialophora* strains related to cerebral phaeoophomycosis with in vitro antifungal susceptibility. *J. Clin. Microbiol.* 48:2350–2356.
133. Feng P, Najafzadeh MJ, Sun J, Ahmed S, Xi L, de Hoog GS, Lai W, Lu C, Klaassen CH, Meis JF. 2012. In vitro activities of nine antifungal drugs against 81 *Phialophora* and *Cyphellophora* isolates. *Antimicrob. Agents Chemother.* 56:6044–6047.
134. Najafzadeh MJ, Badali H, Illnait-Zaragozi MT, de Hoog GS, Meis JF. 2010. In vitro activities of eight antifungal drugs against 55 clinical isolates of *Fonsecaea* spp. *Antimicrob. Agents Chemother.* 54:1636–1638.
135. Rodgers CJ, Furones MD. 2009. Antimicrobial agents in aquaculture: practice, needs and issues. *Options Méditerranéennes A*, no 86. The use of veterinary drugs and vaccines in Mediterranean aquaculture. Mediterranean Agronomic Institute of Zaragoza, Zaragoza, Spain.



**Seyedmojtaba (Amir) Seyedmousavi** obtained a degree in veterinary medicine (D.V.M.) in 2002 from Tehran University and completed his Ph.D. and training in medical and veterinary mycology in 2006. He was previously appointed as a senior lecturer and assistant professor of medical mycology in Iran (2002 to 2009). From 2009 to 2010, he did postdoctoral research and a traineeship in molecular mycology at CBS-KNAW, Netherlands, in the lab of Prof. Dr. G. S. de Hoog. In 2010, he joined the Department of Medical Microbiology, Radboud University Nijmegen Medical Centre, Netherlands, as a postdoctoral scientific researcher under the supervision of Prof. Dr. Paul E. Verweij, Prof. Dr. Johan W. Mouton, and Dr. Willem Melchers. His current research focuses on fungal infection models and on the pharmacokinetics and pharmacodynamics (PK/PD) of antifungal agents in experimental models of azole-resistant invasive aspergillosis. He also investigates the comparative utilities of molecular diagnostics as well as biomarkers. He is one of the founding members (2010) and coordinator of the ISHAM veterinary mycology working group.



**Jacques Guillot**, a graduate of the Veterinary College of Alfort France, completed his training in medical mycology at Pasteur Institute, Paris, France. His Ph.D., obtained from the University Paris Est Créteil in 1995, was about the classification of *Malassezia* yeasts. His research activity is now focused on the genetic diversity and virulence of airborne fungal pathogens such as *Pneumocystis* and *Aspergillus* spp. Jacques Guillot contributed to the description of several original clinical cases of animal mycoses. His entire career has been as a teacher at the Veterinary College of Alfort France, holding the position of full professor of parasitology and mycology since 2002. He has been a corresponding member of the French Academy of Medicine since 2008. With physicians and other veterinarians, Jacques Guillot recently created a research group devoted to the study of the colonization and invasion of pulmonary epithelium by fungal pathogens in mammals and birds.



**Sybren de Hoog** is senior researcher in phylogenetic and ecological mycology at the Centraalbureau voor Schimmelcultures KNAW Fungal Biodiversity Centre at Baarn, since 2000 in Utrecht. He is also appointed as professor of mycology at the Universities of Amsterdam, Beijing, and Guangzhou and has written over 480 scientific papers, in addition to editing numerous special journal issues. He was program chairman of the TIFI/ECMM congress in Amsterdam (2003). He has prepared the standard work *Atlas of Clinical Fungi* (with J. Guarro, Reus, Spain), for which an electronic version is available. He has been president of the International Society for Human and Animal Mycology (ISHAM). In this function he assisted in the organization of ISHAM and satellite congresses in Tokyo and Beijing in 2009. His teaching activities comprise the CBS course in medical mycology for hospital personnel and courses in various places in Europe and Asia.

