

# Excitation-induced exchange of $\text{Na}^+$ , $\text{K}^+$ , and $\text{Cl}^-$ in rat EDL muscle in vitro and in vivo: Physiology and pathophysiology

Torben Clausen

Department of Biomedicine, Aarhus University, DK-8000 Aarhus C, Denmark

In skeletal muscle, excitation leads to increased  $[\text{Na}^+]_i$ , loss of  $\text{K}^+$ , increased  $[\text{K}^+]_o$ , depolarization, and  $\text{Cl}^-$  influx. This study quantifies these changes in rat extensor digitorum longus (EDL) muscles in vitro and in vivo using flame photometric determination of  $\text{Na}^+$  and  $\text{K}^+$  and  $^{36}\text{Cl}$  as a tracer for  $\text{Cl}^-$ . In vitro, 5-Hz stimulation for 300 s increased intracellular  $\text{Na}^+$  content by  $4.6 \pm 1.2 \mu\text{mol/g}$  wet wt ( $P < 0.002$ ) and decreased intracellular  $\text{K}^+$  content by  $5.5 \pm 2.3 \mu\text{mol/g}$  wet wt ( $P < 0.03$ ). This would increase  $[\text{K}^+]_o$  by  $28 \pm 12 \text{ mM}$ , sufficient to cause severe loss of excitability as the result of inactivation of  $\text{Na}^+$  channels. In rat EDL, in vivo stimulation at 5 Hz for 300 s or 60 Hz for 60 s induced significant loss of  $\text{K}^+$  ( $P < 0.01$ ), sufficient to increase  $[\text{K}^+]_o$  by  $71 \pm 22 \text{ mM}$  and  $73 \pm 15 \text{ mM}$ , respectively. In spite of this, excitability may be maintained by the rapid and marked stimulation of the electrogenic  $\text{Na}^+, \text{K}^+$  pumps already documented. This may require full utilization of the transport capacity of  $\text{Na}^+, \text{K}^+$  pumps, which then becomes a limiting factor for physical performance. In buffer containing  $^{36}\text{Cl}$ , depolarization induced by increasing  $[\text{K}^+]_o$  to 40–80 mM augmented intracellular  $^{36}\text{Cl}$  by 120–399% ( $P < 0.001$ ). Stimulation for 120–300 s at 5–20 Hz increased intracellular  $^{36}\text{Cl}$  by 100–188% ( $P < 0.001$ ). In rats,  $\text{Cl}^-$  transport in vivo was examined by injecting  $^{36}\text{Cl}$ , where electrical stimulation at 5 Hz for 300 s or 60 Hz for 60 s increased  $^{36}\text{Cl}$  uptake by 81% ( $P < 0.001$ ) and 84% ( $P < 0.001$ ), respectively, indicating excitation-induced depolarization.  $\text{Cl}^-$  influx favors repolarization, improving  $\text{K}^+$  clearance and maintenance of excitability. In conclusion, excitation-induced fluxes of  $\text{Na}^+$ ,  $\text{K}^+$ , and  $\text{Cl}^-$  can be quantified in vivo, providing new evidence that in working muscles, extracellular accumulation of  $\text{K}^+$  is considerably higher than previously observed and the resulting depression of membrane excitability may be a major cause of muscle fatigue.

## INTRODUCTION

It is well established that in skeletal muscle, excitation leads to a rapid influx of  $\text{Na}^+$ . This is blocked by tetrodotoxin, a specific inhibitor of  $\text{Na}^+$  channels (Gissel and Clausen, 1999) and is immediately followed by an efflux of  $\text{K}^+$  leading to a rise in  $[\text{K}^+]_o$  (Sejersted and Sjøgaard, 2000). The ensuing depolarization is counterbalanced by stimulation of active electrogenic  $\text{Na}^+, \text{K}^+$  transport and influx of  $\text{Cl}^-$ . However, as emphasized in a review (Allen et al., 2008), too little is known about the time course and magnitude of these ion fluxes and the changes in local concentrations of  $\text{Na}^+$ ,  $\text{K}^+$ , and  $\text{Cl}^-$  during low-frequency stimulation in vivo. A recent study indicates that during electrical stimulation (60 Hz for 30 s) of isolated intact rat extensor digitorum longus (EDL) muscle, the excitation-induced net loss of cellular  $\text{K}^+$ , measured by flame photometry, leads to a considerably higher level (52 mM) in the mean  $[\text{K}^+]_o$  (Clausen, 2008a) than previously recorded in working muscles using  $\text{K}^+$ -sensitive microelectrodes (Hník et al., 1976) or microdialysis probes (Nielsen et al., 2004). Moreover, after 150 s of intermittent stimulation at a mean frequency of 15 Hz,  $[\text{K}^+]_o$  of isolated rat EDL muscle reached 74 mM (Clausen, 2011).

This would severely impair excitability and raised questions about how  $\text{K}^+$  could be adequately cleared from the extracellular space in working muscles. However, because these experiments were performed in vitro, it could be argued that the excitation-induced net loss of  $\text{K}^+$  and the calculated rise in  $[\text{K}^+]_o$  were underestimated because of the lower temperature used for the incubation (30°C) and the higher extracellular space found in vitro compared with in vivo (Sheff and Zacks, 1982). Therefore, the primary purpose of the present study is to develop procedures allowing the quantification of the effects of excitation on  $[\text{K}^+]_o$  and  $[\text{Na}^+]_o$  in EDL muscles of the anaesthetized rat in vivo. It has repeatedly been proposed that the excitation-induced elevation of  $[\text{K}^+]_o$  is an important cause of muscle fatigue (Fenn, 1940; Sjøgaard, 1990; Cairns et al., 1997; Clausen 2003), mainly because  $\text{K}^+$  induces slow inactivation of  $\text{Na}^+$  channels (Ruff et al., 1988). At variance with the classical fast inactivation, which is not operative around the resting membrane potential, slow inactivation is operative around the resting potential and may partially explain why small depolarizations, e.g., those occurring in some patients with periodic paralysis, can reduce excitability. This effect is likely to

Correspondence to Torben Clausen: tc@fi.au.dk

Abbreviations used in this paper: CGRP, calcitonin gene-related peptide; ECV, extracellular volume; EDL, extensor digitorum longus; ICV, intracellular volume; KR buffer, Krebs-Ringer bicarbonate buffer; TCA, trichloroacetic acid.

© 2013 Clausen This article is distributed under the terms of an Attribution-Noncommercial-Share Alike-No Mirror Sites license for the first six months after the publication date (see <http://www.rupress.org/terms>). After six months it is available under a Creative Commons License (Attribution-Noncommercial-Share Alike 3.0 Unported license, as described at <http://creativecommons.org/licenses/by-nc-sa/3.0/>).

depend on the excitation-induced rise in  $[K^+]_o$  and the frequency of action potentials. In keeping with this, the rate of fatigue (determined as force decline) in human muscle is closely correlated to the frequency of stimulation (Sacco et al., 1994). In isolated rat soleus and EDL muscles, force decline during continuous stimulation shows a highly significant correlation to the excitation-induced rise in extracellular  $K^+$  (Clausen, 2008b).

It is well established that excitation increases intracellular  $Cl^-$  in skeletal muscle of animals (Krnjevic and Miledi, 1958; Lindinger et al., 1987) and human subjects (Sahlin et al., 1978), and it is generally accepted that  $Cl^-$  ions play an important role in the stabilization of the membrane potential (Hodgkin and Horowitz, 1959; Cairns et al., 2004; Pedersen et al., 2005; Dutka et al., 2008). The depolarization induced by the post-excitatory accumulation of  $K^+$  in the extracellular space may favor the influx of  $Cl^-$  ions along their transmembrane concentration gradient.  $Cl^-$  influx induces repolarization, which favors the uptake of  $K^+$  via inward rectifier  $K^+$  channels. Thus,  $Cl^-$  is essential for the maintenance of excitability. Lack of  $Cl^-$  channel function leads to myotonia (Gurnett et al., 1995). In keeping with this, it was observed that the omission of  $Cl^-$  from the incubation medium caused a 14-fold increase in the rate of force decline measured during the first 10 s of continuous 60-Hz stimulation in rat EDL muscle (Clausen, 2011). As a follow up on this observation, and a supplement to the abovementioned studies of excitation-induced  $Na^+, K^+$  fluxes, the present study quantifies the excitation-induced influx of  $^{36}Cl$  and its intracellular concentration during and after electrical stimulation at varying frequencies and durations. These values were compared with the changes in intracellular  $Cl^-$  induced by elevated extracellular  $K^+$  in rat EDL muscle. The excitation-induced uptake of  $^{36}Cl$  was also quantified in vivo. The following working hypotheses were examined: (a) the excitation-induced net loss of  $K^+$  and gain of  $Na^+$  in rat EDL muscle can be quantified in vivo, allowing calculation of the changes in extracellular concentrations of  $K^+$  and  $Na^+$  at varying frequencies and durations of electrical stimulation; (b) elevation of  $[K^+]_o$ , leading to depolarization of the muscle cells, induces a rise in intracellular  $^{36}Cl$  content in vitro; and (c) excitation induces  $^{36}Cl$  uptake that can be quantified in vivo and compared with similar data obtained in vitro. This is important for repolarization during and after work.

## MATERIALS AND METHODS

### Background for incubation procedures

The present experiments were performed using rat EDL muscles, which contain predominantly fast-twitch fibers. In a recent study (Clausen, 2008a), it was examined whether the net loss of  $K^+$  from EDL was higher when the muscles were stimulated in buffer than in air, where loss of  $K^+$  into the surroundings of the muscle could

be excluded. After 30 s of continuous stimulation at 60 Hz in Krebs-Ringer bicarbonate buffer (KR buffer) or in air, extracellular  $Na^+$  and  $K^+$  were removed by washing the muscles four times for 15 min in ice-cold  $Na^+$ -free Tris-sucrose buffer, blotting, weighing, and flame photometric determination of total  $K^+$  contents. The difference between  $K^+$  contents of resting and contralateral stimulated muscles in the muscle pairs kept in air ( $9.1 \pm 1.7 \mu\text{mol/g wet wt}$ ) and those kept in buffer ( $9.5 \pm 1.4 \mu\text{mol/g wet wt}$ ) was not significantly different ( $n = 9$  vs.  $7$ ;  $P = 0.87$ ). This shows that during the 30 s of stimulation in KR buffer, the mean concentration of  $K^+$  in the extracellular spaces of EDL muscles reaches the same level as in the muscles stimulated in air (48.6 mM and 46.7 mM, respectively). In keeping with this, the muscles incubated in KR buffer and in air for 300 s showed close similarity in endurance and force (Fig. 3 in Clausen, 2008a). These results indicate that even when EDL muscles are incubated during continuous gassing in standard KR buffer, the net release of  $K^+$  from the extracellular space into the buffer is modest within the first 5 min. Thus, it was reasonable to assume that the amount of  $K^+$  released into the extracellular space could be quantified by measuring the  $K^+$  released into the incubation medium during a subsequent much longer (four times for 15 min) washout in ice-cold,  $Na^+$ -free buffer, where there is no loss of intracellular  $K^+$  (see below). The values for net loss of  $K^+$  obtained from measuring the increase in the  $K^+$  content of the washing buffer were not significantly different from those obtained measuring the net loss of  $K^+$  from the muscle by deducting the  $K^+$  content of the stimulated muscles from that of the resting contralateral muscles (Clausen et al., 2004). Measurements of the  $K^+$  residing in the extracellular space provide information about the mean extracellular  $K^+$  ( $[K^+]_o$ ) reached at the end of electrical stimulation.

### Animals, preparation, and incubation of muscles

All handling and use of rats complied with Danish animal welfare regulations, including the euthanasia, which in addition was approved by the Animal Welfare Officer of Aarhus University. All experiments were performed using 4–5-wk-old Wistar rats bred at the Department of Biomedicine, Aarhus University, weighing 60–80 g. The animals were fed ad libitum and kept in a thermostated environment at 21°C with a 12/12-h light/dark cycle. Animals were killed by cervical dislocation, followed by decapitation. Intact EDL muscles weighing 20–30 mg were immediately dissected out during wash with 154 mM NaCl at room temperature, mounted at resting length, and equilibrated at 30°C in standard KR buffer containing the following (in mM): 122.2 NaCl, 25  $NaHCO_3$ , 2.8 KCl, 1.2  $KH_2PO_4$ , 1.2  $MgSO_4$ , 1.3  $CaCl_2$ , and 5.0 D-glucose. The pH was maintained at 7.4 by continuous gassing with a humidified mixture of 95%  $O_2$  and 5%  $CO_2$ . In some experiments, where the concentration of  $K^+$  was augmented to 40, 60, or 80 mM, osmolarity was maintained by replacing NaCl with equimolar amounts of KCl.

In most experiments, the isolated muscles were stimulated via platinum wire electrodes placed around the mid-portion of the muscle so as to obtain optimal excitation. Trains of 10-V pulses of 0.05–1.0-ms duration were used. Immediately after the cessation of the stimulation, the muscles were washed with ice-cold  $Na^+$ -free Tris-sucrose buffer to remove extracellular  $Na^+$  and  $K^+$ . The contralateral control muscles were not stimulated but exposed to a similar positioning of electrodes around the muscle and the same washing with ice-cold  $Na^+$ -free Tris-sucrose buffer. Finally, all muscles were blotted on dry filter paper, weighed, and taken for flame photometric determination of  $Na^+$  and  $K^+$  contents.

### Measurements of $Na^+, K^+$ contents, $Cl^-$ content, $^{36}Cl$ uptake, $[^{14}C]$ sucrose space, and water content

The total contents of  $Na^+$  and  $K^+$  were measured by soaking the muscles overnight in ice-cold 0.3 M trichloroacetic acid (TCA).

Samples of this extract were taken for counting of isotopes and flame photometry (Radiometer). In several experiments, the Na<sup>+</sup>, K<sup>+</sup> contents of the muscles were determined after rest or stimulation in KR buffer or in air. This was primarily done by washing the muscles during continuous gassing with air four times for 15 min in ice-cold Na<sup>+</sup>-free Tris-sucrose buffer, followed by blotting on dry filter paper and wet weight determination. The Na<sup>+</sup>-free Tris-sucrose buffer had the following composition (in mM): 263 sucrose, 10 Tris-HCl, 2.8 KCl, 1.3 CaCl<sub>2</sub>, 1.2 MgSO<sub>4</sub>, and 1.2 KH<sub>2</sub>PO<sub>4</sub>, pH 7.4. We have previously shown that during wash in this buffer, the K<sup>+</sup> content of EDL muscles remains constant for 150 min, whereas the intracellular Na<sup>+</sup> content undergoes a slow decrease that can be corrected for by multiplying with a constant, 1.59 per hour of washout (Murphy et al., 2006). Thus, by removing extracellular Na<sup>+</sup>, as well as the K<sup>+</sup> released from the working muscle cells, without causing further loss of intracellular K<sup>+</sup>, this procedure allows the determination of the total cellular contents of Na<sup>+</sup> and K<sup>+</sup>. In the present study, it was confirmed that during 60 or 120 min of washout in Na<sup>+</sup>-free Tris-sucrose buffer, EDL muscles showed no significant net loss of K<sup>+</sup> (100.4 ± 1.3 μmol/g wet wt [*n* = 11 muscles] before washout and after 60 or 120 min of washout 100.6 ± 1.4 μmol/g wet wt [*n* = 14 muscles] and 103.3 ± 2.0 μmol/g wet wt [*n* = 4 muscles], respectively). The excitation-induced release of intracellular K<sup>+</sup> into the extracellular space is calculated from the difference between the K<sup>+</sup> contents of resting and stimulated muscle. In some control experiments, the excitation-induced loss of K<sup>+</sup> was determined by measuring the K<sup>+</sup> content of the ice-cold washout buffer at the end of washout. The values are expressed as μmol/g wet wt and converted to the mean concentration of K<sup>+</sup> in the extracellular space measured using [<sup>14</sup>C]sucrose (Clausen, 2008a). In vitro [<sup>14</sup>C]sucrose space was determined by preincubating muscles for 90 min in KR buffer containing 1 mM unlabeled sucrose (as a carrier) and 0.2 μCi/ml [<sup>14</sup>C]sucrose. Then the muscles were either resting or stimulated as indicated in Results, blotted, weighed, and soaked overnight in 0.3 M TCA. This extract was taken for counting of [<sup>14</sup>C] activity. The [<sup>14</sup>C]sucrose space was calculated on the basis of the [<sup>14</sup>C]sucrose activity in the tissue and in the KR buffer. Dry weight and total water content as determined by drying muscles overnight at 60°C to constant weight were 24.2% and 75.8%, respectively (*n* = 33 muscles). In these in vitro experiments, intracellular water space of resting muscles was calculated by deducting [<sup>14</sup>C]sucrose space (see Table 4) from total water content (75.8% - 24.2% = 51.6%).

To assess whether <sup>36</sup>Cl is a valid and representative tracer for Cl<sup>-</sup> in the muscles, Cl<sup>-</sup> was measured by titration using an ABU 91 autoburette (Radiometer) and compared with the uptake of <sup>36</sup>Cl in EDL during 90-min incubation in KR buffer, sufficient to achieve equilibration of <sup>36</sup>Cl in rat EDL (Hayward and Barchi, 1980). The uptake of <sup>36</sup>Cl in EDL as measured by counting in a β-counter (Tri-Carb 2100 TR; Packard) corresponded to 96.8% of the total Cl<sup>-</sup> content measured in the same extract by titration (*n* = 8 vs. 8 muscles).

The excitation-induced uptake of <sup>36</sup>Cl was measured in muscles equilibrated for 90 min in KR buffer containing 0.4–1.0 μCi/ml <sup>36</sup>Cl. After this equilibration, the muscles were transferred to empty incubation chambers thermostatically maintained at 30°C, and the drips of buffer adhering to the surface of the muscle and the inner walls of the incubation chamber were carefully removed using thin folded strips of dry filter paper. Thus, it could be assumed that during the subsequent electrical stimulation, intracellular uptake of <sup>36</sup>Cl could only take place from the interstitial water space of the muscle. Incubation in the absence of buffer was earlier shown to allow maintenance of contractile performance for at least 8 min at 30°C (Clausen, 2008a). During the incubation in the absence of buffer, the muscles were stimulated or allowed to rest. The muscles were then washed for the indicated intervals

(10–60 min) in ice-cold Na<sup>+</sup>-free Tris-sucrose buffer, blotted, weighed, and taken for counting of <sup>36</sup>Cl and flame photometric determination of Na<sup>+</sup> and K<sup>+</sup>.

### In vivo experiments

These were performed to quantify the excitation-induced gain of Na<sup>+</sup> and loss of K<sup>+</sup> in EDL muscles in the intact animal (rats weighing 60–80 g). Parallel to these experiments, the extracellular space was measured by giving an intraperitoneal injection of [<sup>14</sup>C]sucrose (2–5 μCi and 10 μmol unlabeled sucrose [as a carrier] per animal) and allowing 60 min for equilibration of this marker. The rats were then anaesthetized by giving an intraperitoneal injection of 0.11 ml of a solution containing 0.55 mg fluanisone, 0.0173 mg fentanyl citrate, and 0.275 mg midazolam, causing full analgesia in 10–15 min. The animals were placed on their back, and the legs fixed with sports tape. When analgesia was fully developed, a blood sample of 0.5 ml was taken from a tail vein using a thin cannula (0.5 mm × 16 mm Microlance; BD) and centrifuged, and plasma was withdrawn for sedimentation of proteins with 0.3 M TCA and counting of [<sup>14</sup>C] activity in the clear supernatant obtained by the centrifugation. Then the EDL muscle was dissected out, blotted on dry filter paper, and weighed, and the [<sup>14</sup>C] activity was extracted in 0.3 M TCA. It can be assumed that after 60 min [<sup>14</sup>C]sucrose is equilibrated in the extracellular space and plasma of the rat in vivo (Law and Phelps, 1966), allowing calculation of the water space available to this marker in the whole EDL muscle. In contrast to the muscles used for measuring Na<sup>+</sup>, K<sup>+</sup> and <sup>36</sup>Cl<sup>-</sup> content, the muscles used for measuring [<sup>14</sup>C]sucrose space in vivo were not washed in the cold. In 19 resting muscles, the [<sup>14</sup>C]sucrose space was 18.2 ± 1.1% and in 20 muscles stimulated at 60 Hz for 60 s 17.7 ± 1.0%, which is not significantly different from that of the resting muscles (*P* = 0.70). Dry weight and total water content were 24% and 76%, respectively. The wet weight of the 19 resting muscles was 29.1 ± 0.7 mg and that of the 20 stimulated muscles 29.7 ± 0.5 mg (*P* = 0.53). In another experiment, there was no significant difference between the wet weight of resting muscles (29.2 ± 1.2 mg) and muscles stimulated at 5 Hz for 300 s in vivo (30.9 ± 1.7 mg; *n* = 7 vs. 7; *P* = 0.43). Intracellular water space in vivo was calculated by deducting [<sup>14</sup>C]sucrose space from total water content (76% - 18% = 58%). The muscles used for measuring [<sup>14</sup>C]sucrose space were taken for determination of total Na<sup>+</sup> and K<sup>+</sup> content. There was no significant difference between the Na<sup>+</sup> content of resting muscles (26.3 ± 0.8 μmol/g wet wt) and muscles stimulated at 60 Hz for 60 s (27.6 ± 0.7 μmol/g wet wt; *n* = 19 vs. 20; *P* = 0.22). Neither was there any significant difference between the K<sup>+</sup> content of resting muscles (103.2 ± 2.7 μmol/g wet wt) and stimulated muscles (101.0 ± 2.6 μmol/g wet wt; *n* = 19 vs. 20; *P* = 0.57). This shows that the differences in cellular Na<sup>+</sup> and K<sup>+</sup> contents between resting and stimulated muscles shown in Table 3 require removal of extracellular Na<sup>+</sup> and K<sup>+</sup> by washout in the cold to be detected. These results also indicate that the net loss of K<sup>+</sup> observed in stimulated muscles is not the outcome of a more direct and efficient clearance of K<sup>+</sup> via the capillaries.

For the study of the effects of electrical stimulation on the distribution of Na<sup>+</sup> and K<sup>+</sup>, the skin covering the frontal surface of the hind leg was opened, and the tendon of the tibialis anterior muscle was grasped using a surgical forceps. The muscle was gently and slowly drawn aside so that the EDL muscle could be reached. The two branches of a platinum wire electrode were placed around the mid-portion of the EDL, and the muscle was stimulated at its resting length using pulse trains of 10 V at the duration and frequency indicated in the legends and text. Immediately after the cessation of the stimulation, ice-cold Na<sup>+</sup>-free Tris-sucrose buffer was dripped from a pipette on the muscle to obtain rapid cooling, which markedly inhibits the efflux of K<sup>+</sup> and Na<sup>+</sup>, K<sup>+</sup> pump-mediated reaccumulation of K<sup>+</sup> (the Na<sup>+</sup>, K<sup>+</sup> pumps



in rat skeletal muscle have a  $Q_{10}$  of 2.3 [Clausen, 2003]). 5 s later, the muscle was cut free across the tendons, carefully avoiding damage to the muscle fibers. Then the muscle was transferred to a perforated polyethylene cylinder that was washed four times for 5 min or four times for 15 min in ice-cold  $\text{Na}^+$ -free Tris-sucrose buffer during continuous gassing with air. Henceforth, the muscles were blotted on dry filter paper, weighed, and soaked overnight in ice-cold 0.3 M TCA for extraction of  $\text{Na}^+$  and  $\text{K}^+$ . The TCA extract was then taken for flame photometric determination of  $\text{Na}^+$  and  $\text{K}^+$  contents.

The excitation-induced uptake of  $^{36}\text{Cl}$  in EDL in vivo was measured by injecting 200  $\mu\text{l}$  of a 154 mM NaCl solution containing 4  $\mu\text{Ci}$   $^{36}\text{Cl}$  intraperitoneally. The isotope was allowed to equilibrate in the water space of the animal for 90 min (like in the in vitro experiments with  $^{36}\text{Cl}$ ). 15 min before the end of this period, the rat was anaesthetized by intraperitoneal injection of analgesics as described above. A blood sample was withdrawn from a tail vein for measurement of the content of  $^{36}\text{Cl}$  in plasma. At the end of the equilibration period, EDL was exposed and stimulated as indicated above. Immediately after the stimulation, the muscle was washed with ice-cold  $\text{Na}^+$ -free Tris-sucrose buffer, cut free, and washed four times for 5 min in ice-cold Tris-sucrose, blotted, weighed, and soaked in 0.3 M TCA, and the extract was taken for counting of  $^{36}\text{Cl}$ .

#### Chemicals and isotopes

All chemicals used were of analytical grade. [ $^{14}\text{C}$ ]sucrose was obtained from GE Healthcare and  $^{36}\text{Cl}$  from the Hevesy Laboratory, Risø National Laboratory.

#### Statistics

All data are presented as means with SEM. The statistical significance of a difference between two groups was ascertained using the Student's two-tailed *t* test for nonpaired observations.

## RESULTS

### Effects of electrical stimulation on $\text{Na}^+$ , $\text{K}^+$ content and extracellular concentration of $\text{K}^+$ ( $[\text{K}^+]_o$ ) and $\text{Na}^+$ ( $[\text{Na}^+]_o$ ) in vitro

As shown in Table 1, electrical stimulation of isolated EDL muscles induces a significant increase in total  $\text{Na}^+$  content and a significant decrease in total  $\text{K}^+$  content. After 5- and 60-Hz stimulation, the net loss of  $\text{K}^+$  is  $5.5 \pm 2.3$   $\mu\text{mol/g}$  wet wt and  $10.0 \pm 2.7$   $\mu\text{mol/g}$  wet wt, respectively. The excitation-induced net loss of intracellular  $\text{K}^+$  takes place into the extracellular space, causing a rise in  $[\text{K}^+]_o$ . This rise can be calculated by dividing the net loss of  $\text{K}^+$  by the extracellular volume (ECV), which as measured in vitro using [ $^{14}\text{C}$ ]sucrose amounts to 19.4% of muscle wet weight or 0.194 ml/g muscle wet wt in the stimulated muscles (see Table 4). From the data shown in Table 1, the calculated rise in  $[\text{K}^+]_o$  in the extracellular space after 5- and 60-Hz stimulation is  $28 \pm 12$  mM ( $5.5 \pm 2.3/0.194$ ) and  $52 \pm 14$  mM ( $10.0 \pm 2.7/0.194$ ), respectively. Stimulation at 5 or 60 Hz increases total intracellular  $\text{Na}^+$  content by  $4.6 \pm 1.2$   $\mu\text{mol/g}$  wet wt and  $9.8 \pm 0.7$   $\mu\text{mol/g}$  wet wt, respectively. Because these increases reflect a loss of  $\text{Na}^+$  from the extracellular space, it can be calculated that stimulation at 5 and 60 Hz reduces the extracellular  $\text{Na}^+$  concentration by  $24 \pm 6$  mM

( $4.6 \pm 1.2/0.194$ ) and  $51 \pm 4$  mM ( $9.8 \pm 0.7/0.194$ ), respectively. When the washout time is reduced from 60 to 20 min, there is no change in the measured excitation-induced loss of  $\text{K}^+$ , indicating that this is not taking place during the washout in the ice-cold  $\text{Na}^+$ -free Tris-sucrose buffer, in keeping with the results of the longer lasting washout experiments described in Materials and methods. The gain in intracellular  $\text{Na}^+$  must happen during the electrical stimulation in KR buffer because it cannot take place during the washout in the  $\text{Na}^+$ -free buffer. Most of the excitation-induced loss of  $\text{K}^+$  was already observed after 15 s of stimulation at 60 Hz, amounting to  $9.9 \pm 1.4$   $\mu\text{mol/g}$  wet wt, sufficient to increase  $[\text{K}^+]_o$  by  $51 \pm 7$  mM ( $9.9 \pm 1.4/0.194$ ;  $n = 6$  vs. 6 muscles;  $P < 0.001$ ).

As a test of muscle integrity and the reversibility of the excitation-induced loss of  $\text{K}^+$  and gain of  $\text{Na}^+$ , the effects of 60 s of 60-Hz stimulation with the muscles mounted in empty incubation chambers were examined without or with a subsequent recovery period of 600 s. As shown in Table 2, this stimulation caused a net loss of  $\text{K}^+$  of  $11.0 \pm 2.0$   $\mu\text{mol/g}$  wet wt, sufficient to cause a rise in  $[\text{K}^+]_o$  of  $57 \pm 10$  mM. When the muscles after the stimulation were allowed to stay in the empty chambers and rest for 600 s,  $\text{K}^+$  contents as well as  $\text{Na}^+$  contents were completely restored to those of the unstimulated muscles. This indicates that all the  $\text{K}^+$  lost during the 60 s of stimulation into the ECV (0.194 ml/g wet wt) was returning to the muscle cells during the 600 s of poststimulation rest. Simultaneously, the  $\text{Na}^+$  taken up into the cells was completely reextruded into the ECV. As illustrated in the diagram in Fig. 1, a muscle mounted in air contains two defined compartments, the intracellular

TABLE 1

Effect of electrical stimulation on total contents of  $\text{K}^+$  and  $\text{Na}^+$  in isolated rat EDL muscle in vitro

Experimental conditions	Total $\text{K}^+$ content	Total $\text{Na}^+$ content
	$\mu\text{mol/g}$ wet wt	$\mu\text{mol/g}$ wet wt
Resting muscles	$103.7 \pm 2.1$ (9)	$13.6 \pm 1.0$ (9)
5-Hz stimulation, 300 s	$98.2 \pm 0.9$ (9) <sup>a</sup>	$18.2 \pm 0.6$ (9) <sup>b</sup>
Resting muscles	$102.8 \pm 1.9$ (5)	$11.8 \pm 0.6$ (5)
60-Hz stimulation, 60 s	$92.8 \pm 1.9$ (5) <sup>c</sup>	$21.6 \pm 0.4$ (5) <sup>d</sup>

The muscles were mounted in force transducers for measurement of isometric contractions, adjusted to optimal length, and equilibrated for 30 min in KR buffer at 30°C during gassing with a mixture of 95%  $\text{O}_2$  and 5%  $\text{CO}_2$ . Continuous direct stimulation was performed using 10-V, 1-ms pulses at 5 or 60 Hz. After stimulation, all muscles were immediately washed four times for 15 min in ice-cold  $\text{Na}^+$ -free Tris-sucrose buffer, blotted, weighed, and taken for flame photometric determination of  $\text{Na}^+$  and  $\text{K}^+$  contents. The contralateral muscles from the same animals were allowed to rest, and their content of  $\text{Na}^+$  and  $\text{K}^+$  was compared with that of the stimulated muscles. All values are given as means  $\pm$  SEM, with the number of muscles in parentheses.

<sup>a</sup> $P < 0.03$  compared with resting muscles.

<sup>b</sup> $P < 0.002$  compared with resting muscles.

<sup>c</sup> $P < 0.006$  compared with resting muscles.

<sup>d</sup> $P < 0.001$  compared with resting muscles.

TABLE 2

Reversibility of the effects of 60-Hz stimulation on the contents of  $\text{Na}^+$  and  $\text{K}^+$  in rat EDL *in vitro*

Experimental conditions	Total $\text{K}^+$ content	Total $\text{Na}^+$ content
	$\mu\text{mol/g wet wt}$	$\mu\text{mol/g wet wt}$
Resting muscles	$102.7 \pm 1.7$ (3)	$12.9 \pm 0.4$ (3)
60-Hz stimulation, 60 s	$91.7 \pm 1.1$ (6) <sup>a</sup>	$24.1 \pm 0.9$ (6) <sup>b</sup>
60-Hz stimulation, 60 s + 600-s rest	$105.8 \pm 0.8$ (3) <sup>c</sup>	$12.3 \pm 0.4$ (3) <sup>c</sup>

The muscles were mounted in force transducers for measurement of isometric contractions, adjusted to optimal length, and equilibrated for 30 min at 30°C during gassing with a mixture of 95%  $\text{O}_2$  and 5%  $\text{CO}_2$ . Then all muscles were moved to empty tubes, and the last drips of the buffer adhering to the muscle surface were carefully removed. One group of three muscles was left resting for 60 s, another group of six muscles was stimulated for 60 s at 60 Hz using 0.2-ms pulses at 10 V, and a third group of three muscles was stimulated for 60 s at 60 Hz using 0.2-ms pulses at 10 V and then left resting for 600 s in the empty tubes, allowing reaccumulation of the  $\text{K}^+$  lost to the extracellular space into the muscle cells (see Fig. 1). Finally, all muscles were washed four times for 15 min in ice-cold  $\text{Na}^+$ -free Tris-sucrose buffer, blotted, weighed, and taken for flame photometric determination of  $\text{Na}^+$  and  $\text{K}^+$  contents. All values are given as means  $\pm$  SEM, with the number of muscles in parentheses.

<sup>a</sup> $P < 0.001$  compared with resting muscles.

<sup>b</sup> $P < 0.01$  compared with resting muscles.

<sup>c</sup> $P < 0.001$  compared with 60-Hz stimulation, 60 s.

volume (ICV) and the ECV, and may be used to study the exchange of  $\text{Na}^+$  and  $\text{K}^+$  between these two volumes, undisturbed of exchange with an incubation buffer.

Previous experiments (Clausen, 2011) showed that when EDL muscles were stimulated at 60 Hz in air, force declined by 80% in 30 s and the net loss of  $\text{K}^+$  reached  $9.5 \pm 3.0 \mu\text{mol/g wet wt}$ , sufficient to cause a rise in extracellular  $\text{K}^+$  of  $46 \pm 14 \text{ mM}$  ( $9.5 \pm 3.0/0.207$ ; please note that in those experiments, ECV was 0.207 ml/g wet wt). Very similar results were obtained with EDL muscles incubated and stimulated in KR buffer, where it could be calculated that during 30 s of 60-Hz stimulation,  $[\text{K}^+]_o$  increased by  $46 \pm 7 \text{ mM}$ , sufficient to

TABLE 3

Effect of electrical stimulation on total contents of  $\text{Na}^+$  and  $\text{K}^+$  in rat EDL muscle *in vivo*

Experimental conditions	Total $\text{K}^+$ content	Total $\text{Na}^+$ content
	$\mu\text{mol/g wet wt}$	$\mu\text{mol/g wet wt}$
Resting muscles	$98.2 \pm 2.2$ (8)	$13.5 \pm 1.0$ (8)
5-Hz stimulation, 300 s	$85.6 \pm 3.3$ (8) <sup>a</sup>	$21.7 \pm 1.0$ (8) <sup>b</sup>
Resting muscles	$90.8 \pm 1.9$ (6)	$10.7 \pm 0.5$ (6)
60-Hz stimulation, 60 s	$77.7 \pm 1.8$ (7) <sup>b</sup>	$17.1 \pm 0.5$ (7) <sup>b</sup>

As described in Materials and methods, rats were anaesthetized and the EDL muscles stimulated at resting length using platinum wire electrodes and 1-ms pulses at 10 V applied at the durations and frequencies indicated. After stimulation, the muscles were immediately washed four times for 15 min in ice-cold  $\text{Na}^+$ -free Tris-sucrose buffer, blotted, weighed, and taken for flame photometric determination of  $\text{Na}^+$  and  $\text{K}^+$  content. Values are given as mean  $\pm$  SEM, with the number of muscles in parentheses.

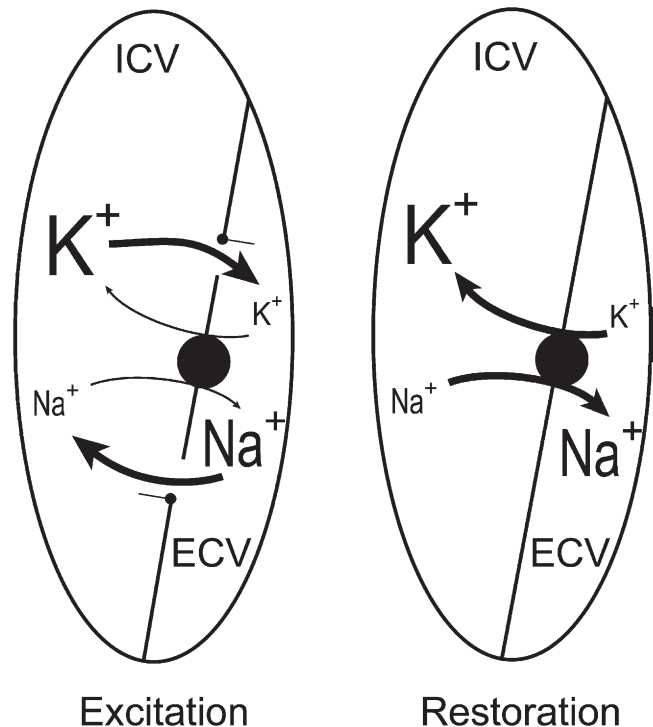
<sup>a</sup> $P < 0.007$  compared with resting muscles.

<sup>b</sup> $P < 0.001$  compared with resting muscles.

cause almost complete suppression of excitability as well as further loss of  $\text{K}^+$ . During the last 15 s of the 30-s stimulation, the increase in  $[\text{K}^+]_o$  was only one-fifth of the increase observed during the first 15 s (Clausen, 2011). The general implication is that in these stimulation experiments, most of the excitation-induced loss of  $\text{K}^+$  takes place in the early phase, indicating that as the result of progressive extracellular accumulation of  $\text{K}^+$ , excitation is a self-limiting process.

Effect of electrical stimulation on  $\text{Na}^+$ ,  $\text{K}^+$  contents,  $[\text{K}^+]_o$  sucrose space, and  $[\text{K}^+]_o$  *in vivo*

As shown in Table 3, direct stimulation of EDL muscles *in vivo* using 10-V pulses of 1 ms at 5 Hz for 300 s caused a net loss of  $\text{K}^+$  of  $12.6 \pm 3.9 \mu\text{mol/g wet wt}$  ( $n = 8$  vs. 8 muscles;  $P < 0.007$ ). With the extracellular space of 17.7% (0.177 ml/g wet wt) measured after stimulation *in vivo*, this would be sufficient to cause an increase in mean  $[\text{K}^+]_o$  of  $71 \pm 22 \text{ mM}$  ( $12.6 \pm 3.9/0.177$ ).



**Figure 1.** Diagram of excitation-induced exchange of  $\text{Na}^+$  and  $\text{K}^+$  between ECV and ICV. See Table 2. Excitation (left) is induced by a rapid influx of  $\text{Na}^+$  ( $11.2 \mu\text{mol/g wet wt}$ ) from ECV into ICV, followed by an equivalent efflux of  $\text{K}^+$  ( $11.0 \mu\text{mol/g wet wt}$ ) from ICV into the ECV. This takes place while the muscles are in air, and during the following washout in ice-cold  $\text{Na}^+$ -free Tris-sucrose,  $11 \mu\text{mol/g wet wt}$  of  $\text{K}^+$  is removed from the ECV as can be seen from the loss of  $11 \mu\text{mol/g wet wt}$  while the  $\text{Na}^+$  taken up into ICV stays in the ICV, leading to a reduction in total  $\text{K}^+$  content and a similar increase in total  $\text{Na}^+$ . As shown in Table 2, the  $\text{Na}^+$ ,  $\text{K}^+$  contents are restored during the 600-s incubation without buffer by stimulation of the  $\text{Na}^+$ ,  $\text{K}^+$  pumps. When the muscles are incubated in air, these movements of  $\text{Na}^+$  and  $\text{K}^+$  may be followed undisturbed of exchange with a surrounding incubation medium.

The concomitant increase in Na<sup>+</sup> content was 8.2 ± 1.5 μmol/g wet wt. Because this Na<sup>+</sup> is lost from the extracellular space into the muscle cells, [Na<sup>+</sup>]<sub>o</sub> can be expected to decrease by 46 ± 8 mM (8.2 ± 1.5/0.177). As shown in Table 3, when stimulating in vivo at 60 Hz for 60 s, the net loss of K<sup>+</sup> from the muscles reached 13.1 ± 2.6 μmol/g wet wt (6 vs. 7 muscles; P < 0.001), sufficient to cause an increase in [K<sup>+</sup>]<sub>o</sub> of 74 ± 15 mM (13.1 ± 2.6/0.177). The concomitant increase in Na<sup>+</sup> content of the EDL muscle was 6.4 ± 0.7 μmol/g wet wt (P < 0.001). Because this Na<sup>+</sup> is lost from the extracellular space into the muscle cells, [Na<sup>+</sup>]<sub>o</sub> can be expected to decrease by 36 ± 4 mM (6.5 ± 0.7/0.177). Hence, like in the in vitro experiments, the excitation-induced increase in intracellular Na<sup>+</sup> content is somewhat smaller than the decrease in K<sup>+</sup> content. In an earlier study, the excitation-induced increase in Na<sup>+</sup> content was more similar to the rise in K<sup>+</sup> content (Clausen, 2011), in keeping with the well-established selective one for one exchange of Na<sup>+</sup> and K<sup>+</sup> causing the action potentials.

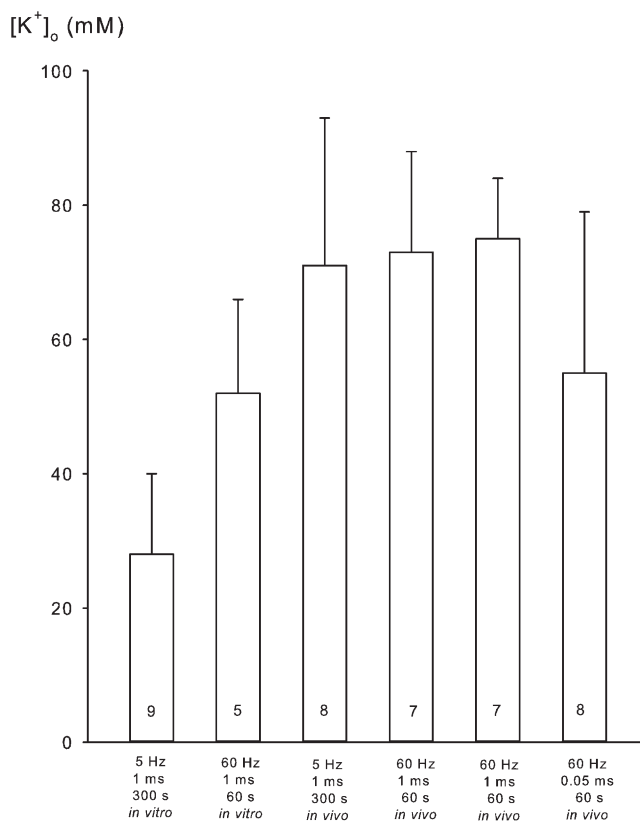
In another in vivo experiment, 1-ms pulses given at 60 Hz for 60 s induced a net loss of K<sup>+</sup> of 13.2 ± 1.6 μmol/g wet wt (P < 0.001), which could increase [K<sup>+</sup>]<sub>o</sub> by 75 ± 9 mM (13.2 ± 1.6/0.177; n = 7 vs. 8 muscles). In the same experiment, the net loss of K<sup>+</sup> into the ice-cold Tris-sucrose buffer during the quadruple 15-min washout was also measured. A value of 9 ± 1.6 μmol/g wet wt was obtained, corresponding to 68% recovery of the measured net decrease in the K<sup>+</sup> content of the muscles. Within the 60 s of stimulation, this quantity of K<sup>+</sup> could have increased [K<sup>+</sup>]<sub>o</sub> by 51 ± 9 mM (9 ± 1.6/0.177). It is reasonable to assume that the incomplete recovery is caused by inevitable and partial washout of extracellular K<sup>+</sup> taking place during the cooling of the muscles by dripping with ice-cold Tris-sucrose buffer for 5 s before the quadruple 15-min washout in Tris-sucrose. As already mentioned, this rapid cooling was necessary to reduce post-excitatory reaccumulation of K<sup>+</sup> into the muscle cells.

To examine whether these relatively high values for K<sup>+</sup> loss reflected the release of K<sup>+</sup> via cellular leaks caused by the use of relatively long pulses (1 ms), which might happen, albeit after longer duration of the stimulation (Mikkelsen et al., 2004), the same in vivo experiments were also performed using 10-V pulses of 0.05 ms at 60 Hz for 60 s, sufficient to cause full indirect stimulation of contractile force. This indirect stimulation caused a net decrease in K<sup>+</sup> content of the muscles of 9.8 ± 4.1 μmol/g wet wt (P = 0.03; 8 vs. 8 muscles). Assuming the mean extracellular space of 17.7% measured in vivo, this could cause an increase in [K<sup>+</sup>]<sub>o</sub> of 55 ± 23 mM (9.8 ± 4.1/0.177), 26% lower than stimulation with 1-ms pulses. The effects of electrical stimulation in vitro and in vivo on [K<sup>+</sup>]<sub>o</sub> in EDL are summarized in Fig. 2. The SEM values are large because the K<sup>+</sup> loss is calculated as the difference between the relatively large

values for K<sup>+</sup> content (Tables 1 and 3). However, it should be noted that in all experiments, the excitation-induced loss of K<sup>+</sup> was statistically significant. The experiments with [<sup>14</sup>C]sucrose space measurements in vivo showed that the excitation-induced net uptake of Na<sup>+</sup> and net loss of K<sup>+</sup> cannot be detected in muscles not undergoing washout in the cold. The washout makes the excitation-induced changes visible and documents that they are significant.

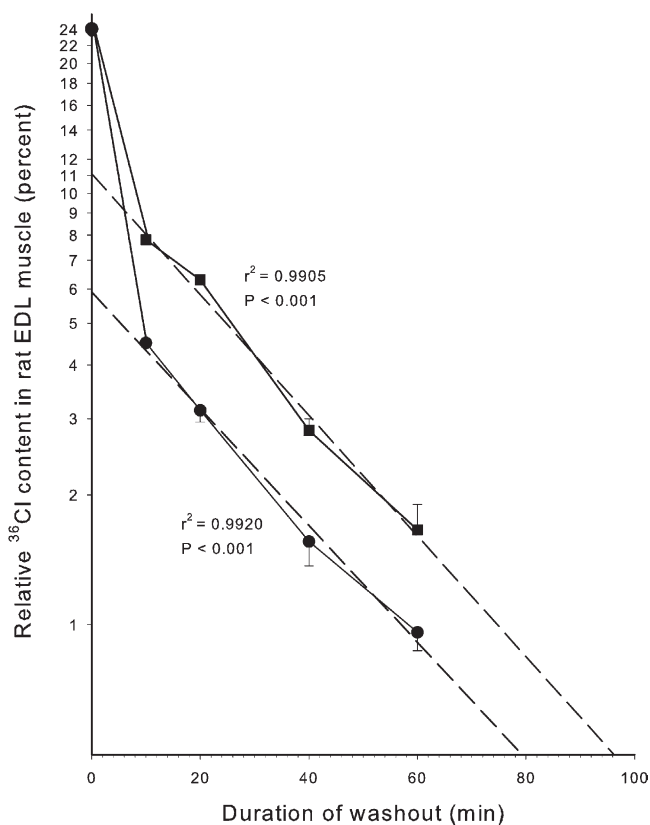
#### Effect of electrical stimulation on the uptake of [<sup>14</sup>C]sucrose and <sup>36</sup>Cl in vitro

As shown in Table 4, the tissue water space available to <sup>36</sup>Cl is not very different from that available to [<sup>14</sup>C]sucrose. Electrical stimulation caused a minor reduction (21%) in [<sup>14</sup>C]sucrose space (P = 0.04) and no significant change in <sup>36</sup>Cl space (P = 0.17). There was no significant difference between <sup>36</sup>Cl<sup>-</sup> space and [<sup>14</sup>C]sucrose space at rest (P = 0.59), and after electrical stimulation, <sup>36</sup>Cl<sup>-</sup> space was slightly lower than [<sup>14</sup>C]sucrose space (P = 0.05). Thus, the intracellular uptake of <sup>36</sup>Cl



**Figure 2.** Stimulation-induced expected rise in [K<sup>+</sup>]<sub>o</sub> in EDL muscles in six different experiments. Experiments were performed as described in Materials and Methods and the legends to Tables 1 and 3. Mean values are obtained by dividing the net loss of K<sup>+</sup> by the extracellular space measured in the stimulated muscles in vitro (0.194 ml/g wet wt) and in vivo (0.177 ml/g wet wt). Values are given with bars denoting SEM and the number of muscles inside the columns. The frequency and duration of stimulation are given below each column.

cannot be measured with satisfactory accuracy by comparing the spaces available to [ $^{14}\text{C}$ ]sucrose and  $^{36}\text{Cl}$ . Therefore, after incubation with  $^{36}\text{Cl}$ , the relatively large extracellular pool of  $^{36}\text{Cl}$  was reduced by repeated washout, allowing more accurate quantification of the cellular  $^{36}\text{Cl}$  remaining in the muscles after washout. Because the efflux of  $^{36}\text{Cl}$  from the intracellular space of rat EDL is markedly reduced at low temperatures (Palade and Barchi, 1977; Hayward and Barchi, 1980), the present washout was performed at  $0^\circ\text{C}$ . To allow comparison between intracellular  $^{36}\text{Cl}$  content and  $\text{Na}^+, \text{K}^+$  contents, ice-cold  $\text{Na}^+$ -free Tris sucrose was used, a procedure earlier shown to allow the determination of excitation-induced changes in intracellular contents of  $\text{Na}^+$  and  $\text{K}^+$  (Everts and Clausen, 1992; Murphy et al., 2006, 2008). Fig. 3 shows the time course of the washout of  $^{36}\text{Cl}$  from EDL muscles preloaded with  $^{36}\text{Cl}$  for 90 min in KR buffer without or with a subsequent 60 s of electrical stimulation at 60 Hz. As shown at the onset of washout (0 time), this caused no significant change in total content of  $^{36}\text{Cl}$ . Only when washout is started, clearing the extracellular  $^{36}\text{Cl}$ , does it become visible that the stimulated muscles contain more  $^{36}\text{Cl}$  than the resting muscles, which must have been taken up during the stimulation. When illustrated in a semilogarithmic plot, the wash at  $0^\circ\text{C}$  caused a rapid early loss of  $^{36}\text{Cl}$ , assumedly reflecting clearance of  $^{36}\text{Cl}$  from the extracellular phase, followed by a considerably slower phase reflecting efflux of  $^{36}\text{Cl}$  from the intracellular pool. This is in keeping with an earlier study on isolated EDL muscles from young rats showing that at  $5^\circ\text{C}$ ,  $^{36}\text{Cl}$  efflux has an early rapid component lasting 3–4 min, followed by a much slower washout (Hayward and Barchi, 1980). By extrapolation of the linear phase (dashed lines) to the onset of washout shown in Fig. 3, the magnitude of the slowly exchanging pool can be read off from the intercepts with the ordinate. In the resting muscles, the



**Figure 3.** The effects of electrical stimulation on the washout of  $^{36}\text{Cl}$  from isolated EDL muscles. Muscles were mounted in holders for isometric contractions, preequilibrated for 15 min in KR buffer at  $30^\circ\text{C}$ , and preloaded with  $^{36}\text{Cl}$  for 90 min in KR buffer containing  $0.3\text{--}1.0 \mu\text{Ci/ml}$   $^{36}\text{Cl}$ . Then all muscles were moved into empty tubes and carefully blotted to remove the last drips of buffer adhering to the tissue using thin folded strips of dry filter paper. Then, while staying in the empty thermostated tubes, contralateral muscles were either stimulated for 60 s at 60 Hz using  $0.2\text{-ms}$ ,  $10\text{-V}$  pulses or left resting for the same interval of time. This would allow the  $^{36}\text{Cl}$  residing in the extracellular space to enter the muscle cells. Then resting and stimulated muscles were taken for counting of  $^{36}\text{Cl}$  (results shown at 0 time), and all the other muscles were washed for periods of twice for 5 min, four times for 5 min, four times for 10 min, or four times for 15 min in ice-cold  $\text{Na}^+$ -free Tris-sucrose buffer, blotted on dry filter paper, weighed, and taken for counting (results shown at the indicated time for sampling). On the basis of the  $^{36}\text{Cl}$  activity of the buffer used for the 90-min loading, the relative uptake of  $^{36}\text{Cl}$  was plotted at the onset of washout and at the time points indicated from 10 to 60 min. The content of  $^{36}\text{Cl}$  is given in relative values as percentage of the total uptake per gram of wet weight reached during the 90-min loading period and during the following wash (e.g., at 0 time, the  $^{36}\text{Cl}$  taken up in 1 g wet wt corresponds to the  $^{36}\text{Cl}$  content in  $0.24 \text{ ml}$  KR buffer or 24%). The dashed regression lines were plotted for the resting and the stimulated muscles, respectively, and values for  $r^2$  and the significance of the correlation ( $P$ ) are given. Each point in this figure represents the mean of observations with SEM on three to six muscles. The intercepts of the dashed line with the ordinate gave values of 5.8% and 11%, corresponding to  $7.4 \mu\text{mol}$  and  $14 \mu\text{mol}$   $^{36}\text{Cl}$  for the resting controls and the stimulated muscles, respectively.

TABLE 4

Effect of electrical stimulation on the relative uptake of [ $^{14}\text{C}$ ]sucrose and  $^{36}\text{Cl}$  in rat EDL muscle in vitro

Experimental conditions	[ $^{14}\text{C}$ ]sucrose space	$^{36}\text{Cl}$ space
	%	%
Rest	$24.7 \pm 1.8$ (6)	$23.6 \pm 0.4$ (6)
60-Hz stimulation, 120 s	$19.4 \pm 0.4$ (6)	$22.6 \pm 0.6$ (6)

Isolated rat EDL muscles were mounted in force transducers for isometric contractions and preequilibrated for 15 min in KR buffer at  $30^\circ\text{C}$ , followed by 90 min of incubation in KR buffer with  $0.4 \mu\text{Ci/ml}$   $^{36}\text{Cl}$  or  $0.2 \mu\text{Ci/ml}$  [ $^{14}\text{C}$ ]sucrose and 1 mM of unlabelled sucrose (as a carrier). Finally, six of the muscles were stimulated for 120 s at 60 Hz using  $0.2\text{-ms}$ ,  $10\text{-V}$  pulses. Six other muscles were resting. The muscles were blotted on dry filter paper, weighed, and taken for counting of  $^{36}\text{Cl}$  and  $^{14}\text{C}$  activity. On the basis of the  $^{36}\text{Cl}$  and  $^{14}\text{C}$  activity of the incubation medium, the relative uptake of the isotopes was expressed as a percentage and given as mean  $\pm$  SEM, with the number of muscles in parentheses. For example, a  $^{36}\text{Cl}$  uptake of 23.6% means that 1 g of muscle (wet weight) has taken up  $^{36}\text{Cl}$  corresponding to that contained in  $0.236 \text{ ml}$  of incubation medium.



intercept value is 5.8%. Because the  $\text{Cl}^-$  concentration in the KR buffer is 127.5 mM, this corresponds to a  $^{36}\text{Cl}$  content of 7.4  $\mu\text{mol/g}$  wet wt or an intracellular concentration of  $\text{Cl}^-$  of 14.5 mM, based on the aforementioned value for intracellular water space in vitro of 51%. In the stimulated muscles, the intercept value per gram of muscle wet weight is 5.2% larger, corresponding to an excitation-induced increase of 6.63  $\mu\text{mol/g}$  wet wt or reaching an intracellular concentration of  $\text{Cl}^-$  of 27.5 mM. This implies that during the 60 s of 60-Hz stimulation (3,600 pulses),  $^{36}\text{Cl}$  influx corresponds to 6.63  $\mu\text{mol/g}$  wet wt/min or 1.84 nmol  $^{36}\text{Cl/g}$  wet wt/pulse. In these experiments with  $^{36}\text{Cl}$ , the resting and the contralateral stimulated muscles showed no significant difference in wet weight (resting muscles weighing  $26.74 \pm 0.62$  mg wet wt vs. stimulated weighing  $26.66 \pm 0.60$  mg,  $n = 21$  vs. 21;  $P = 0.93$ ). Therefore, the higher  $^{36}\text{Cl}$  uptake in the stimulated muscles shown in Fig. 3 cannot be attributed to excitation-induced reduction in wet weight.

As shown in Table 5, when applied at lower and more physiological frequencies (5–20 Hz) and longer duration (120–300 s), electrical stimulation also induces a highly significant ( $P < 0.001$ ) increase (100–188%) in  $^{36}\text{Cl}$  content in EDL muscles. This increase depends on the frequency and duration of stimulation and may arise during the depolarization caused by the excitation-induced rise in  $[\text{K}^+]_o$ .

To examine the effect of depolarization on  $^{36}\text{Cl}$  uptake, EDL muscles were exposed to KR buffer containing 40–80 mM  $\text{K}^+$ . As shown in Table 6, incubation for 90 min with 40–80 mM  $\text{K}^+$  induced a marked (120–399%) and highly significant ( $P < 0.001$ ) increase in  $^{36}\text{Cl}$  content as measured after 60 min of washout in the ice-cold  $\text{Na}^+$ -free Tris-sucrose buffer. After incubation with 40 mM  $\text{K}^+$ , intracellular  $^{36}\text{Cl}$  concentration reached  $38 \pm 6$  mM, identical to the level reached after electrical stimulation at 10 Hz for 300 s ( $38 \pm 8$  mM; Table 5). In the same experiment, the net loss of  $\text{K}^+$  from the stimulated muscles was  $7.45 \pm 2.6$   $\mu\text{mol/g}$  wet wt, sufficient to cause a rise in  $[\text{K}^+]_o$  of  $38 \pm 13$  mM. As shown in Fig. 4, when the

4 mM  $\text{K}^+$  already present in the extracellular phase is added,  $[\text{K}^+]_o$  will reach 42 mM, close to the 40 mM  $\text{K}^+$  tested for its effect on  $^{36}\text{Cl}$  content. This suggests that the effects of excitation on intracellular  $^{36}\text{Cl}$  concentration can be mimicked by exposure to elevated  $\text{K}^+$ . In contrast, the increase in intracellular  $^{36}\text{Cl}$  concentration induced by 60 s of electrical stimulation at 60 Hz is clearly lower than that reached by long-term exposure to 60 or 80 mM  $\text{K}^+$ . This might be the result of inadequate time to reach full uptake of  $^{36}\text{Cl}$ . Anyhow, measurement of  $^{36}\text{Cl}$  uptake in vitro allows the detection of depolarization caused by longer-lasting electrical stimulation.

#### Effect of electrical stimulation on $^{36}\text{Cl}$ uptake and intracellular $^{36}\text{Cl}$ concentration in vivo

As described in Materials and methods,  $^{36}\text{Cl}$  was injected and allowed to equilibrate for 90 min. After anesthesia, the EDL muscles were made accessible with preserved circulation, and platinum wire electrodes were positioned allowing stimulation. After stimulation at 5 Hz for 300 s, 20 Hz for 300 s, or 60 Hz for 60 s, using 1-ms, 10-V pulses, the muscles were washed four times for 5 min with ice-cold  $\text{Na}^+$ -free Tris-sucrose buffer, blotted, weighed, and taken for counting of  $^{36}\text{Cl}$  content and measurement of  $\text{Na}^+$ ,  $\text{K}^+$  contents by flame photometry.

As shown in Table 7,  $^{36}\text{Cl}$  content was  $8.8 \pm 0.3$   $\mu\text{mol/g}$  wet wt in the unstimulated EDL and  $15.9 \pm 0.6$   $\mu\text{mol/g}$  wet wt ( $P < 0.001$ ) in the stimulated EDL at 5 Hz for 300 s using 1-ms, 10-V pulses ( $n = 4$  vs. 4 muscles). The specific activity of  $^{36}\text{Cl}$  in these experiments was based on the plasma  $\text{Cl}^-$  of 110 mM measured in the rat (Kotchen et al., 1978). As mentioned above, intracellular water space in vivo amounts to 61.4%, and using this value, the  $^{36}\text{Cl}$  content corresponds to mean intracellular  $^{36}\text{Cl}$  concentrations of  $14.3 \pm 0.6$  mM and  $25.9 \pm 0.9$  mM in resting and stimulated EDL, respectively. This indicates that in vivo, stimulation at 5 Hz for 300 s increases  $^{36}\text{Cl}^-$  uptake by 7.1  $\mu\text{mol/g}$  wet wt in 60 s, augmenting intracellular  $^{36}\text{Cl}^-$  content by 81%. When stimulated at 20 Hz for 300 s or 60 Hz for 60 s, about the same increases

TABLE 5  
Effect of electrical stimulation on the uptake of  $^{36}\text{Cl}$  in isolated rat EDL muscle in vitro

Experimental conditions	$^{36}\text{Cl}$ uptake	Intracellular $^{36}\text{Cl}$	Relative increase	P-values
	$\mu\text{mol/g wet wt}$	mM	%	
Resting controls	$7.1 \pm 0.6$ (5)	$13.9 \pm 1.2$		
60-Hz stimulation, 60 s	$12.2 \pm 1.8$ (5)	$23.9 \pm 3.6$	71	<0.03
Resting controls	$7.6 \pm 0.3$ (9)	$14.9 \pm 0.6$		
5-Hz stimulation, 300 s	$16.4 \pm 0.7$ (3)	$32.2 \pm 1.4$	116	<0.001
10-Hz stimulation, 120 s	$15.2 \pm 1.0$ (3)	$29.9 \pm 2.0$	100	<0.001
10-Hz stimulation, 300 s	$19.5 \pm 0.4$ (3)	$38.2 \pm 7.8$	157	<0.001
20-Hz stimulation, 120 s	$21.9 \pm 4.2$ (3)	$42.9 \pm 8.4$	188	<0.001

Experimental conditions as described in the legend to Fig. 3, except that stimulation was also performed using the indicated lower frequencies and longer durations before the quadruple 15-min washout in  $\text{Na}^+$ -free Tris-sucrose buffer at 0°C. All values were corrected for the loss of  $^{36}\text{Cl}$  taking place during the washout in the cold and are given as  $\mu\text{mol/g}$  wet wt  $\pm$  SEM, with the number of muscles in parentheses.



TABLE 6  
Effects of elevated  $[K^+]_o$  on  $^{36}Cl$  uptake in isolated rat EDL muscle in vitro

Buffer composition	$^{36}Cl$ uptake	Intracellular $^{36}Cl$	Relative increase	P-values
	$\mu\text{mol/g wet wt}$	$\text{mM}$	%	
KR with 4 mM $K^+$	$8.8 \pm 1.3$ (5)	$17.3 \pm 2.5$ (5)		
KR with 40 mM $K^+$	$19.4 \pm 3.0$ (5)	$38.0 \pm 5.9$ (5)	120	0.011
KR with 60 mM $K^+$	$29.7 \pm 1.1$ (3)	$58.2 \pm 2.2$ (3)	238	<0.001
KR with 80 mM $K^+$	$43.9 \pm 2.3$ (3)	$86.1 \pm 4.5$ (3)	399	<0.001

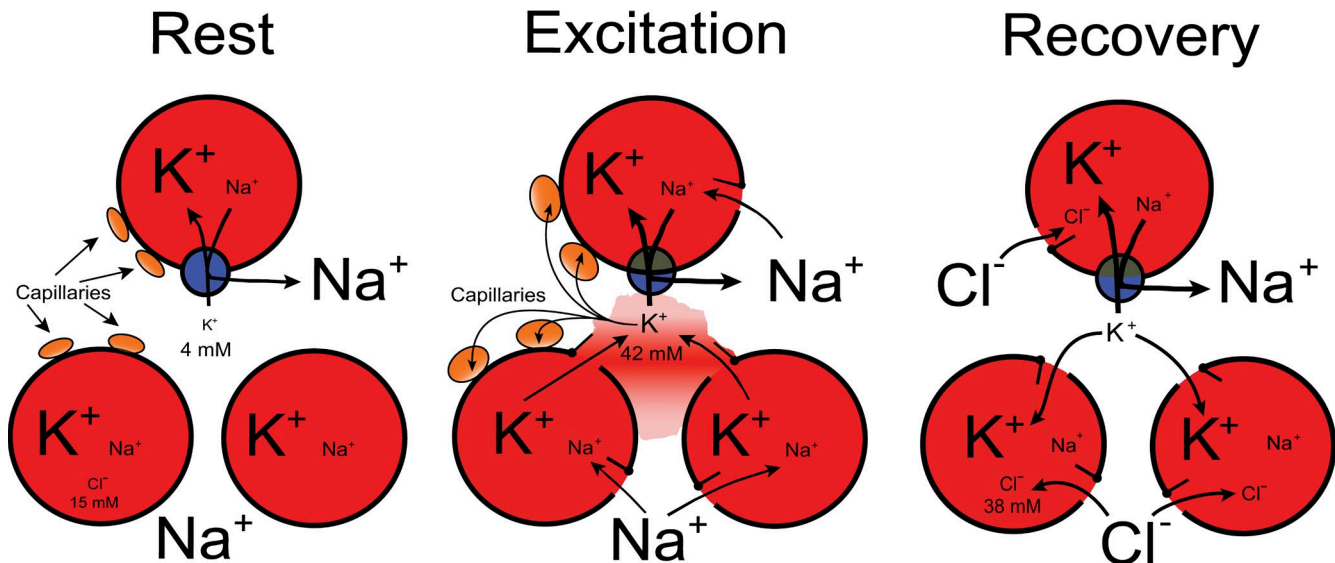
The muscles were mounted in force transducers for measurement of isometric contractions, adjusted to optimal length, and equilibrated for 15 min in KR buffer at 30°C during gassing with a mixture of 95%  $O_2$  and 5%  $CO_2$ . Then the muscles were incubated for 90 min in KR buffer in which NaCl had been replaced by KCl at the concentrations indicated and 0.4  $\mu\text{Ci/ml}$   $^{36}Cl$  added. All muscles were washed four times for 15 min in Na<sup>+</sup>-free Tris-sucrose buffer to remove extracellular tracer, blotted, weighed, and taken for scintillation counting of  $^{36}Cl$ . For each muscle, the content of  $^{36}Cl$  was measured and expressed as  $\mu\text{mol/g wet wt}$  using the specific activity of  $^{36}Cl$  in the loading medium. The data were corrected for the loss of  $^{36}Cl$  during the washout and are given as  $\mu\text{mol/g wet wt} \pm \text{SEM}$ , with the number of muscles in parentheses.

in  $^{36}Cl$  uptake or contents were seen. These data are similar to those obtained with stimulation in vitro (Fig. 3 and Table 5). Total water content in vivo showed no significant change with electrical stimulation neither at 5 Hz for 300 s nor 60 Hz for 60 s.

## DISCUSSION

The major novel mechanistic insight provided by the present study is that 300 s of 5-Hz or 60 s of 60-Hz direct electrical stimulation of rat EDL muscles in vivo induces a net loss of  $K^+$ , which is sufficient to increase  $[K^+]_o$  by up to around 70 mM (Fig. 2). This is accompanied by a somewhat smaller net uptake of  $Na^+$ , which is likely to lead to a drop in extracellular  $Na^+$  (46 mM),

amplifying the inhibitory action of the excitation-induced elevation of  $[K^+]_o$  on contractile performance (Bouclin et al., 1995; Overgaard et al., 1997). In humans, voluntary biking, which is assumed to be associated with a mean stimulation frequency of around 6 Hz (Hallén et al., 1994), leads to a net loss of  $K^+$  from the working muscles (Sjøgaard, 1990). When stimulating the rat EDL muscles at a more physiological frequency (5 Hz) for 300 s in vivo, the net loss of  $K^+$  and gain of  $Na^+$  were similar to those induced by 60-Hz stimulation for 60 s. This indicates that under physiological conditions, the excitation-induced increase in  $[K^+]_o$  in working muscles is sufficient to cause at least transient loss of excitability and fatigue. Moreover, the  $Na^+, K^+$  pumps may occasionally be saturated, leading



**Figure 4.** Diagram describing the sequence of events in excitation-induced redistribution of  $Na^+$ ,  $K^+$ , and  $Cl^-$  in skeletal muscle with values for  $[K^+]_o$  and  $[Cl^-]_i$  induced by electrical stimulation for 300 s at 10 Hz and obtained in the present study. (a)  $Na^+$  influx inducing depolarization and increased  $[Na^+]_i$ . (b) The depolarization activates  $K^+$  efflux, increasing  $[K^+]_o$  from 4 to 42 mM. (c) The increases in  $[Na^+]_i$  and  $[K^+]_o$  activates the  $Na^+, K^+$  pumps. (d) This is a major mechanism for the clearing of extracellular  $K^+$ . (e) The increase in  $[K^+]_o$  induces depolarization. (f) This is counterbalanced by the electrogenic action of the  $Na^+, K^+$  pumps. (g) Elevated  $[K^+]_o$  favors vasodilatation, improving the clearance of  $[K^+]_o$  via the capillaries (Lo et al., 2004; Armstrong et al., 2007). (h) As the result of depolarization,  $Cl^-$  influx is promoted, inducing repolarization and increase in  $[Cl^-]_i$  from 15 to 38 mM (data from Table 5). (i) As the result of this repolarization,  $K^+$  influx via inward rectifiers is increased. (j) This favors the clearance of  $[K^+]_o$ .

TABLE 7  
Effect of electrical stimulation on the uptake of  $^{36}\text{Cl}$  in rat EDL muscle in vivo

Experimental conditions	$^{36}\text{Cl}$ uptake	Intracellular $^{36}\text{Cl}$	Relative increase	P-values
	$\mu\text{mol/g wet wt}$	$\text{mM}$	%	
Resting controls	$8.8 \pm 0.3$ (4)	$14.3 \pm 0.6$ (4)		
5-Hz stimulation, 300 s	$15.9 \pm 0.6$ (4)	$25.9 \pm 0.9$ (4)	81	<0.001
Resting controls	$9.4 \pm 0.4$ (4)	$15.3 \pm 0.7$ (4)		
20-Hz stimulation, 300 s	$16.0 \pm 0.5$ (4)	$26.1 \pm 0.8$ (4)	70	<0.001
Resting controls	$7.7 \pm 0.3$ (4)	$12.5 \pm 0.6$ (4)		
60-Hz stimulation, 60 s	$14.1 \pm 0.6$ (4)	$23.0 \pm 1.0$ (4)	84	<0.001

200  $\mu\text{l}$  of a 154 mM NaCl solution containing 4  $\mu\text{Ci}$   $^{36}\text{Cl}$  was injected intraperitoneally. The isotope was allowed to equilibrate in the water space of the animal for 90 min (like in the experiments with isolated EDL). 15 min before the end of this period, the rats were anaesthetized by intraperitoneal injection of analgesics as described above. A blood sample was withdrawn from a tail vein for measurement of the content of  $^{36}\text{Cl}$  in plasma. At the end of the equilibration period, EDL was exposed and stimulated at resting length via platinum wire electrodes at the indicated frequency and duration using 1-ms pulses at 10 V. Immediately after the stimulation, the muscles were washed with ice-cold  $\text{Na}^+$ -free Tris-sucrose buffer, cut free, and washed four times for 5 min in ice-cold  $\text{Na}^+$ -free Tris-sucrose, blotted, weighed, and soaked in 0.3 M TCA, and the extract was taken for the counting of  $^{36}\text{Cl}$ . The uptake of  $^{36}\text{Cl}$  is given as  $\mu\text{mol/g wet wt} \pm \text{SEM}$  and intracellular  $^{36}\text{Cl}$  as  $\text{mM} \pm \text{SEM}$ , with the number of muscles in parentheses. All values were corrected for the loss of  $^{36}\text{Cl}$  taking place during the washout in the cold.

to full utilization of the  $\text{Na}^+\text{-K}^+$  pump capacity (for details see Clausen et al., 1987; Everts and Clausen, 1994; Nielsen and Clausen, 1997; Sejersted and Sjøgaard, 2000). Because of the narrowness and tortuosity of the t-tubules, the concentration of  $\text{K}^+$  in their lumen is likely to be higher than in the interstitial water space (for details see Clausen, 2003). Measurements of [ $^3\text{H}$ ] ouabain binding in rat EDL muscles in this laboratory indicate that 52% of the total population of  $\text{Na}^+\text{-K}^+$  pumps are situated in the t-tubular lumen.

Excessive muscular activity may lead to loss of muscle cell integrity and contractile force. In rat muscles that have undergone excitation-induced cell damage, stimulation of the  $\text{Na}^+\text{-K}^+$  pumps induces repolarization and improves force recovery as the result of the electrogenic action of the  $\text{Na}^+\text{-K}^+$  pumps (Mikkelsen et al., 2006). This mechanism is important for the restoration of muscle function after intense exercise or muscle cell damage. Muscle cell damage, also caused by crush lesions, often causes hyperkalemia, which may induce cardiac arrest. The most important and fatal medical complication in crush syndrome arising during earthquakes is hyperkalemia (Sever et al., 2003). Thus, by clearing  $\text{K}^+$  from plasma, a high content of  $\text{Na}^+\text{-K}^+$  pumps in the skeletal muscles has survival value during exhaustive exercise or muscle lesions.

The present experiments showed that excitation-induced net loss of  $\text{K}^+$  and net uptake of  $\text{Na}^+$  are highly significant both in vitro and in vivo, both at low (5 Hz) and high (60 Hz) frequency (Tables 1 and 3). Obviously, the net loss of  $\text{K}^+$  is faster during stimulation at 60 than at 5 Hz, reflecting that at 5 Hz, there is more time (300 s) for reaccumulation of  $\text{K}^+$  in the muscle cells. Still, at 60 and 5 Hz in vivo, the rise in  $[\text{K}^+]_o$  is not very different, sufficient to induce complete loss of excitability. These observations are in keeping with an earlier study (Murphy et al., 2008) showing that after 30 min of treadmill running,

cellular  $\text{K}^+$  content of rat soleus muscle was reduced by 6  $\mu\text{mol/g wet wt}$  ( $P < 0.001$ ). This in vivo exercise-induced loss of  $\text{K}^+$  was increased by reducing the transport capacity of the  $\text{Na}^+\text{-K}^+$  pumps in the muscles by injection of ouabain or prior  $\text{K}^+$  depletion of the rats (Nørgaard et al., 1981).

As shown in Fig. 2, the excitation-induced rise in  $[\text{K}^+]_o$  induced by 5- and 60-Hz stimulation is clearly larger in vivo (55–75 mM) than in vitro (28–52 mM). This is likely to be caused by the slightly smaller extracellular space in vivo (17.7%) than in vitro (19.4%) as well as the higher temperature in vivo (37°C) than in vitro (30°C). These large changes in  $\text{Na}^+\text{-K}^+$  content and extracellular  $\text{Na}^+$  and  $\text{K}^+$  might reflect unspecific muscle cell damage induced by the use of 1-ms stimulation pulses. However, this seems unlikely because the changes are reversible in vitro (Table 2) and are also seen using indirect stimulation with much shorter pulses (0.05 ms) in vivo.

Before gaining access to the capillaries, the net loss of  $\text{K}^+$  from the muscle cells has to start by an efflux from the intracellular space into the extracellular space, causing a mean increase in extracellular  $\text{K}^+$  concentration of 50–75 mM. The exact time course of this increase is not yet known, but it is reasonable to assume that it reaches at least this mean level for an interval of 60 s in the experiments with 60-Hz stimulation and probably longer in the experiments with 5-Hz stimulation. An alternative possibility is a short-lasting, even higher early rise in  $\text{K}^+$  concentration, followed by another phase with a smaller rise in extracellular  $\text{K}^+$ . When averaged, this would reach the values recorded. However, this does not rule out that excitation in vivo causes a large, albeit transient rise in extracellular  $\text{K}^+$ .

The other novel observation of the present study is that electrical stimulation both in vitro and in vivo increases the net uptake of  $^{36}\text{Cl}$  in EDL. This effect is

rapid in onset and highly significant from 60 Hz for 60 s, down to more physiological frequencies (5–20 Hz *in vitro* for 120–300 s). At the lower frequencies,  $^{36}\text{Cl}$  uptake reached higher levels than at 60 Hz, probably because the depolarizing effect of elevated  $[\text{K}^+]_o$  was maintained for a longer period. Thus, after 300-s stimulation at 10 Hz, intracellular  $^{36}\text{Cl}$  reached 38 mM, 2.56-fold larger than that of the resting controls (15 mM). In the same experiment, the net loss of  $\text{K}^+$  from the muscle cells amounted to 7.45  $\mu\text{mol/g}$  wet wt, sufficient to increase  $[\text{K}^+]_o$  by 38 mM; 3 vs. 3 muscles). The influx of  $\text{Cl}^-$  contributes to repolarization and thus favors the clearance of  $\text{K}^+$  via inward rectifier  $\text{K}^+$  channels during or after a series of contractions. *In vitro* experiments showed that by elevating  $[\text{K}^+]_o$ ,  $^{36}\text{Cl}$  uptake is markedly stimulated (120–399%). This is likely to reflect depolarization, supporting the idea that the increase in  $^{36}\text{Cl}$  uptake induced by electrical stimulation is related to depolarization, possibly also *in vivo*. The *in vivo* measurements of  $^{36}\text{Cl}$  uptake offers a new method allowing the monitoring of general depolarization in all the cells of a muscle.

Fig. 4 shows a diagram of three muscle cells with extracellular space, capillaries, the  $\text{Na}^+, \text{K}^+$  pumps, and ion channels in the plasma membrane. The figure summarizes some of the major factors and mechanisms influencing excitability in contracting muscle. The sequence of events (a–j) in excitation-induced redistribution of  $\text{Na}^+$ ,  $\text{K}^+$ , and  $\text{Cl}^-$  is listed in the legend. Each of these events is important for the level of  $[\text{K}^+]_o$  and excitability. A previous *in vitro* study showed that in rat EDL, continuous stimulation at 90 Hz augments  $[\text{K}^+]_o$  by 14 mM in 5 s (Clausen et al., 2004). During continuous stimulation, the rate of force decline is closely correlated to the excitation-induced increase in  $[\text{K}^+]_o$  (Clausen, 2008b). As shown in another study, 60 s of 20-Hz stimulation may lead to  $\sim 10$ -fold increase in  $[\text{K}^+]_o$  (Clausen, 2011). This will be associated with depolarization and reduced excitability, which has repeatedly been proposed as an important cause of fatigue (Sjøgaard, 1990; Sejersted and Sjøgaard, 2000; Clausen, 2003). It is important, therefore, that  $\text{K}^+$  can be cleared rapidly from the extracellular space. This happens by diffusion into the extracellular space and the capillaries, which undergo dilatation, allowing more efficient removal of  $\text{K}^+$  by increased blood flow (Kjellmer, 1965; Lo et al., 2004; Armstrong et al., 2007). As proposed by Lo et al. (2004), the dilatation may be caused by capillaries surrounding the excited muscle cells sensing the increase in  $\text{K}^+$  release and stimulating arteriolar dilatation via upstream conducted responses. The dilatation depends on the frequency of stimulation and the concentration of  $\text{K}^+$ , and it is suppressed by glibenclamide (Dua et al., 2009). Calcitonin gene-related peptide (CGRP) is one of the most potent vasodilatory compounds. In rat skeletal muscle, 50–100 mM  $\text{K}^+$  has been shown to induce marked

stimulation of the local release of CGRP (Sakaguchi et al., 1991). The excitation-induced increases in  $[\text{K}^+]_o$  of comparable magnitude detected in the present study indicate that CGRP could contribute to the excitation-induced vasodilatation.

In addition,  $\text{K}^+$  clearance is promoted by stimulation of the  $\text{Na}^+, \text{K}^+$  pumps, an effect which can be detected within 10 s of electrical stimulation (Nielsen and Clausen 1997; Buchanan et al., 2002). Thus, after 15 s of stimulation of rat EDL at 60 Hz, reextrusion of  $\text{Na}^+$  as measured during the following 60 s of rest is 7.3-fold faster than basal  $\text{Na}^+$  efflux (Clausen, 2011). This activation of the  $\text{Na}^+, \text{K}^+$  pumps is not only caused by increased intracellular  $\text{Na}^+$ , but also reflects that the affinity of the  $\text{Na}^+, \text{K}^+$  pumps for intracellular  $\text{Na}^+$  is augmented (Nielsen and Clausen 1997; Buchanan et al., 2002), possibly as the result of activation of protein kinase C (Thomassen et al., 2011). This  $\text{Na}^+, \text{K}^+$  pump stimulation not only directly accelerates clearing of extracellular  $\text{K}^+$ , but because the  $\text{Na}^+, \text{K}^+$  pumps are electrogenic, the plasma membrane is further polarized, promoting the removal of  $\text{K}^+$ . The total content of  $\text{Na}^+, \text{K}^+$  pumps in the EDL muscle from 4-wk-old rats as measured *in vivo* amounts to  $669 \pm 82$  pmol/g wet wt (mean  $\pm$  SEM of data from 10 muscles), corresponding to a maximum transport capacity at 37°C of  $2 \times 8,000 \times 669$  pmol/g wet wt = 10.7  $\mu\text{mol K}^+/\text{g wet wt}/\text{min}$  (Murphy et al., 2008). This is calculated with the assumptions that the  $\text{Na}^+, \text{K}^+$ -ATPase has a turnover number of 8,000/min/mol and that for each ATP split, two  $\text{K}^+$  ions are pumped from the extracellular space into the muscle cells. The  $\text{Na}^+, \text{K}^+$  pumps measured by [ $^3\text{H}$ ]ouabain binding to rat skeletal muscle are all functional and have been shown to become fully activated during intense electrical stimulation (120 Hz for 10 s; Everts and Clausen, 1994; Nielsen and Clausen, 1997). Assuming that this happens, the  $\text{Na}^+, \text{K}^+$  pumps in rat EDL may reduce  $[\text{K}^+]_o$  in the extracellular space by 60 mM in 1 min ( $10.7/0.177$ ). Thus, the  $\text{Na}^+, \text{K}^+$  pumps have sufficient capacity to keep pace with the rapid excitation-induced rise in  $[\text{K}^+]_o$ , even in the high range detected in the present study. These results indicate that under physiological *in vivo* conditions, extracellular  $\text{K}^+$  in working muscles reaches a level requiring full utilization of the entire population of  $\text{Na}^+, \text{K}^+$  pumps measured in the same muscles. The physiological importance of the  $\text{Na}^+, \text{K}^+$  pumps is evident from the observation that when the pumps are blocked by ouabain, the rate of force decline during 20 s of continuous electrical stimulation is accelerated by 565% (Clausen, 2008a). During static work with isometric contractions sufficient to compress the blood vessels (Barcroft and Millen, 1939), the clearance of  $\text{K}^+$  via the circulation is abolished and depends on transport into the muscle cells via the  $\text{Na}^+, \text{K}^+$  pumps and inward rectifier  $\text{K}^+$  channels. The ensuing rise in  $[\text{K}^+]_o$  caused by inadequate  $\text{K}^+$  clearance via circulation is



likely to interfere with contractile performance, an extra risk of heavy static work.

In addition, the depolarizing effect of elevated  $[K^+]_o$  is counterbalanced by increased influx of  $Cl^-$ , leading to partial repolarization and increased uptake of  $K^+$  via inward rectifier channels (Dutka et al., 2008). This is likely to happen already after 15 s of stimulation at 60 Hz, allowing continuation of excitation and contraction, albeit with declining force (Clausen, 2011). Finally, excitability is improved by the excitation-induced reduction in  $G_{Cl}$  (Pedersen et al., 2005), mediated by activation of protein kinase C (Pedersen et al., 2009). This was recently shown to increase contractile endurance (de Paoli et al., 2012). It should be recalled that the inhibitory effect of elevated  $[K^+]_o$  on contractile performance is likely to reflect depolarization. Depolarization and loss of contractility were also shown to be induced by carbacholine (Macdonald et al., 2005) or unspecific membrane leakage (Clausen and Gissel, 2005), effects which could both be restored by stimulating the  $Na^+, K^+$  pumps with the  $\beta_2$ -agonist salbutamol. A recent study demonstrated that the inhibitory effect of anoxia on rat EDL muscle contractility could be counteracted by stimulating the  $Na^+, K^+$  pumps with  $\beta_2$ -agonists or theophylline (Fredsted et al., 2012). Patients with lung diseases (e.g., asthma or chronic obstructive pulmonary disease) complain of leg fatigue and peripheral muscle dysfunction. Leg performance was shown to be improved by treatment with the  $\beta_2$ -agonist salmeterol (Brouillard et al., 2008).

### Conclusions and perspectives

The present experiments confirm and amplify the earlier demonstration of pronounced excitation-induced increase in extracellular  $[K^+]_o$  (Clausen, 2008a, 2011). Even at a low frequency (5 Hz) stimulation in vitro induces a loss of cellular  $K^+$  sufficient to induce a rise in interstitial  $K^+$  that would severely interfere with excitability and cause fatigue. More importantly, even larger increases could be demonstrated in vivo, likely to require full utilization of the  $Na^+, K^+$  pump capacity. This emphasizes the significance of the down-regulation of  $Na^+, K^+$  pumps in skeletal muscles seen under a wide range of pathological conditions (Clausen, 1998).

The role of  $K^+$  in muscle fatigue has repeatedly been discussed, but often dismissed, first because the exercise-induced increase in plasma  $K^+$  seemed too modest, second because the decisive increase seemed to happen in the t-tubular lumen or in the interstitial water space of skeletal muscles, regions not readily accessible for accurate measurements, and third because simultaneous changes in local concentrations of other ions seemed to make it unlikely that  $K^+$  acts in isolation during fatigue (Cairns and Lindinger, 2008). The present observations indicating an excitation-induced pronounced increase in the extracellular concentration of  $K^+$  offer new and strong arguments for the idea that  $K^+$  is a sufficient

cause of excitation-induced fatigue also at low frequencies and in vivo. It should be noted that this does not eliminate the important contributions of  $Ca^{2+}$  handling and myofibrillar proteins to muscle fatigue (Allen et al., 2008). The rapid effect of excitation on intracellular  $^{36}Cl$  uptake both in vitro and in vivo indicate that a substantial part of the excited muscle cells undergo sufficient depolarization to favor  $Cl^-$  influx, further evidence that they lose excitability. Finally, the in vivo procedures developed here offer new possibilities to quantify excitation-induced transport of  $Na^+$ ,  $K^+$ , and  $Cl^-$  in muscles in the physiological environment.

I thank Tove Lindahl Andersen, Susanne Jespersen, Marianne Stürup-Johansen, and Vibeke Uhre for skilled technical assistance and Hanne Gissel for providing data for water content in rat EDL muscles.

This study was supported by grants from The Lundbeck Foundation (J. Nr. R31-A2536), The Karen Elise Jensen Foundation (J. Nr. 22401 8/04/05), and The Velux Foundation (J. Nr. 30118).

Edward N. Pugh Jr. served as editor.

Submitted: 30 August 2012

Accepted: 19 December 2012

### REFERENCES

- Allen, D.G., G.D. Lamb, and H. Westerblad. 2008. Skeletal muscle fatigue: cellular mechanisms. *Physiol. Rev.* 88:287–332. <http://dx.doi.org/10.1152/physrev.00015.2007>
- Armstrong, M.L., A.K. Dua, and C.L. Murrant. 2007. Potassium initiates vasodilatation induced by a single skeletal muscle contraction in hamster cremaster muscle. *J. Physiol.* 581:841–852. <http://dx.doi.org/10.1113/jphysiol.2007.130013>
- Barcroft, H., and J.L. Millen. 1939. The blood flow through muscle during sustained contraction. *J. Physiol.* 97:17–31.
- Bouclín, R., E. Charbonneau, and J.M. Renaud. 1995.  $Na^+$  and  $K^+$  effect on contractility of frog sartorius muscle: implication for the mechanism of fatigue. *Am. J. Physiol.* 268:C1528–C1536.
- Brouillard, C., V. Pepin, J. Milot, Y. Lacasse, and F. Maltais. 2008. Endurance shuttle walking test: responsiveness to salmeterol in COPD. *Eur. Respir. J.* 31:579–584. <http://dx.doi.org/10.1183/09031936.00119007>
- Buchanan, R., O.B. Nielsen, and T. Clausen. 2002. Excitation- and  $\beta(2)$ -agonist-induced activation of the  $Na(+)-K(+)$  pump in rat soleus muscle. *J. Physiol.* 545:229–240. <http://dx.doi.org/10.1113/jphysiol.2002.023325>
- Cairns, S.P., and M.I. Lindinger. 2008. Do multiple ionic interactions contribute to skeletal muscle fatigue? *J. Physiol.* 586:4039–4054. <http://dx.doi.org/10.1113/jphysiol.2008.155424>
- Cairns, S.P., W.A. Hing, J.R. Slack, R.G. Mills, and D.S. Loiselle. 1997. Different effects of raised  $[K^+]_o$  on membrane potential and contraction in mouse fast- and slow-twitch muscle. *Am. J. Physiol.* 273:C598–C611.
- Cairns, S.P., V. Ruzhynsky, and J.M. Renaud. 2004. Protective role of extracellular chloride in fatigue of isolated mammalian skeletal muscle. *Am. J. Physiol. Cell Physiol.* 287:C762–C770. <http://dx.doi.org/10.1152/ajpcell.00589.2003>
- Clausen, T. 1998. Clinical and therapeutic significance of the  $Na^+, K^+$  pump. *Clin. Sci.* 95:3–17. <http://dx.doi.org/10.1042/CS19970254>
- Clausen, T. 2003.  $Na^+K^+$  pump regulation and skeletal muscle contractility. *Physiol. Rev.* 83:1269–1324.

- Clausen, T. 2008a. Clearance of extracellular  $K^+$  during muscle contraction—roles of membrane transport and diffusion. *J. Gen. Physiol.* 131:473–481. <http://dx.doi.org/10.1085/jgp.200809971>
- Clausen, T. 2008b. Role of  $Na^+$ ,  $K^+$ -pumps and transmembrane  $Na^+$ ,  $K^+$ -distribution in muscle function. The FEPS Lecture—Bratislava 2007. *Acta Physiol. (Oxf.)*. 192:339–349. <http://dx.doi.org/10.1111/j.1748-1716.2007.01798.x>
- Clausen, T. 2011. In isolated skeletal muscle, excitation may increase extracellular  $K^+$  10-fold; how can contractility be maintained? *Exp. Physiol.* 96:356–368.
- Clausen, T., and H. Gissel. 2005. Role of  $Na^+$ ,  $K^+$  pumps in restoring contractility following loss of cell membrane integrity in rat skeletal muscle. *Acta Physiol. Scand.* 183:263–271. <http://dx.doi.org/10.1111/j.1365-201X.2004.01394.x>
- Clausen, T., M.E. Everts, and K. Kjeldsen. 1987. Quantification of the maximum capacity for active sodium-potassium transport in rat skeletal muscle. *J. Physiol.* 388:163–181.
- Clausen, T., K. Overgaard, and O.B. Nielsen. 2004. Evidence that the  $Na^+$ - $K^+$  leak/pump ratio contributes to the difference in endurance between fast- and slow-twitch muscles. *Acta Physiol. Scand.* 180:209–216. <http://dx.doi.org/10.1111/j.0001-6772.2003.01251.x>
- de Paoli, F.V., M. Broch-Lips, T.H. Pedersen, and O.B. Nielsen. 2012. Relationship between membrane  $Cl^-$  conductance and contractile endurance in isolated rat muscles. *J. Physiol.*
- Dua, A.K., N. Dua, and C.L. Murrant. 2009. Skeletal muscle contraction-induced vasodilator complement production is dependent on stimulus and contraction frequency. *Am. J. Physiol. Heart Circ. Physiol.* 297:H433–H442. <http://dx.doi.org/10.1152/ajpheart.00216.2009>
- Dutka, T.L., R.M. Murphy, D.G. Stephenson, and G.D. Lamb. 2008. Chloride conductance in the transverse tubular system of rat skeletal muscle fibres: importance in excitation-contraction coupling and fatigue. *J. Physiol.* 586:875–887. <http://dx.doi.org/10.1113/jphysiol.2007.144667>
- Everts, M.E., and T. Clausen. 1992. Activation of the  $Na^+$ - $K^+$  pump by intracellular  $Na^+$  in rat slow- and fast-twitch muscle. *Acta Physiol. Scand.* 145:353–362. <http://dx.doi.org/10.1111/j.1748-1716.1992.tb09375.x>
- Everts, M.E., and T. Clausen. 1994. Excitation-induced activation of the  $Na^+$ - $K^+$  pump in rat skeletal muscle. *Am. J. Physiol.* 266:C925–C934.
- Fenn, W.O. 1940. The role of potassium in physiological processes. *Physiol. Rev.* 20:377–415.
- Fredsted, A., H. Gissel, N. Ørtenblad, and T. Clausen. 2012. Effects of  $\beta_2$ -agonists on force during and following anoxia in rat extensor digitorum longus muscle. *J. Appl. Physiol.* 112:2057–2067. <http://dx.doi.org/10.1152/jappphysiol.01558.2011>
- Gissel, H., and T. Clausen. 1999. Excitation-induced  $Ca^{2+}$  uptake in rat skeletal muscle. *Am. J. Physiol.* 276:R331–R339.
- Gurnett, C.A., S.D. Kahl, R.D. Anderson, and K.P. Campbell. 1995. Absence of the skeletal muscle sarcolemma chloride channel  $ClC-1$  in myotonic mice. *J. Biol. Chem.* 270:9035–9038. <http://dx.doi.org/10.1074/jbc.270.16.9035>
- Hallén, J., L. Gullestad, and O.M. Sejersted. 1994.  $K^+$  shifts of skeletal muscle during stepwise bicycle exercise with and without  $\beta$ -adrenoceptor blockade. *J. Physiol.* 477:149–159.
- Hayward, B.S., and R.L. Barchi. 1980. Chloride efflux measurements in mammalian skeletal muscle. *Muscle Nerve.* 3:207–215. <http://dx.doi.org/10.1002/mus.880030304>
- Hník, P.M., M. Holas, I. Krekule, N. Küriz, J. Mejsnar, V. Smiesko, E. Ujec, and F. Vyskocil. 1976. Work-induced potassium changes in skeletal muscle and effluent venous blood assessed by liquid ion-exchanger microelectrodes. *Pflügers Arch.* 362:85–94. <http://dx.doi.org/10.1007/BF00588685>
- Hodgkin, A.L., and P. Horowicz. 1959. The influence of potassium and chloride ions on the membrane potential of single muscle fibres. *J. Physiol.* 148:127–160.
- Kjellmer, I. 1965. The potassium ion as a vasodilator during muscle exercise. *Acta Physiol. Scand.* 63:460–468. <http://dx.doi.org/10.1111/j.1748-1716.1965.tb04089.x>
- Kotchen, T.A., J.H. Galla, and R.G. Luke. 1978. Contribution of chloride to the inhibition of plasma renin by sodium chloride in the rat. *Kidney Int.* 13:201–207. <http://dx.doi.org/10.1038/ki.1978.30>
- Krnjevic, K., and R. Miledi. 1958. Failure of neuromuscular propagation in rats. *J. Physiol.* 140:440–461.
- Law, R.O., and C.F. Phelps. 1966. The size of the sucrose, raffinose, and inulin spaces in the gastrocnemius muscle of the rat. *J. Physiol.* 186:547–557.
- Lindinger, M.I., G.J.F. Heigenhauser, and L.L. Spriet. 1987. Effects of intense swimming and tetanic electrical stimulation on skeletal muscle ions and metabolites. *J. Appl. Physiol.* 63:2331–2339.
- Lo, A., A.J. Fuglevand, and T.W. Secomb. 2004. Theoretical simulation of  $K^+$ -based mechanisms for regulation of capillary perfusion in skeletal muscle. *Am. J. Physiol. Heart Circ. Physiol.* 287:H833–H840. <http://dx.doi.org/10.1152/ajpheart.00139.2004>
- Macdonald, W.A., O.B. Nielsen, and T. Clausen. 2005.  $Na^+$ - $K^+$  pump stimulation restores carbacholine-induced loss of excitability and contractility in rat skeletal muscle. *J. Physiol.* 563:459–469. <http://dx.doi.org/10.1113/jphysiol.2004.080390>
- Mikkelsen, U.R., A. Fredsted, H. Gissel, and T. Clausen. 2004. Excitation-induced  $Ca^{2+}$  influx and muscle damage in the rat: loss of membrane integrity and impaired force recovery. *J. Physiol.* 559:271–285. <http://dx.doi.org/10.1113/jphysiol.2004.067199>
- Mikkelsen, U.R., H. Gissel, A. Fredsted, and T. Clausen. 2006. Excitation-induced cell damage and  $\beta_2$ -adrenoceptor agonist stimulated force recovery in rat skeletal muscle. *Am. J. Physiol. Regul. Integr. Comp. Physiol.* 290:R265–R272. <http://dx.doi.org/10.1152/ajpregu.00392.2005>
- Murphy, K.T., W.A. Macdonald, M.J. McKenna, and T. Clausen. 2006. Ionic mechanisms of excitation-induced regulation of  $Na^+$ - $K^+$ -ATPase mRNA expression in isolated rat EDL muscle. *Am. J. Physiol. Regul. Integr. Comp. Physiol.* 290:R1397–R1406. <http://dx.doi.org/10.1152/ajpregu.00707.2005>
- Murphy, K.T., O.B. Nielsen, and T. Clausen. 2008. Analysis of exercise-induced  $Na^+$ - $K^+$  exchange in rat skeletal muscle in vivo. *Exp. Physiol.* 93:1249–1262. <http://dx.doi.org/10.1113/expphysiol.2008.042457>
- Nielsen, O.B., and T. Clausen. 1997. Regulation of  $Na^+$ - $K^+$  pump activity in contracting rat muscle. *J. Physiol.* 503:571–581. <http://dx.doi.org/10.1111/j.1469-7793.1997.571bg.x>
- Nielsen, J.J., M. Mohr, C. Klarskov, M. Kristensen, P. Krustup, C. Juel, and J. Bangsbo. 2004. Effects of high-intensity intermittent training on potassium kinetics and performance in human skeletal muscle. *J. Physiol.* 554:857–870. <http://dx.doi.org/10.1113/jphysiol.2003.050658>
- Nørgaard, A., K. Kjeldsen, and T. Clausen. 1981. Potassium depletion decreases the number of  $^3H$ -ouabain binding sites and the active  $Na^+$ - $K^+$  transport in skeletal muscle. *Nature.* 293:739–741. <http://dx.doi.org/10.1038/293739a0>
- Overgaard, K., O.B. Nielsen, and T. Clausen. 1997. Effects of reduced electrochemical  $Na^+$  gradient on contractility in skeletal muscle: role of the  $Na^+$ - $K^+$  pump. *Pflügers Arch.* 434:457–465. <http://dx.doi.org/10.1007/s004240050421>
- Palade, P.T., and R.L. Barchi. 1977. Characteristics of the chloride conductance in muscle fibers of the rat diaphragm. *J. Gen. Physiol.* 69:325–342. <http://dx.doi.org/10.1085/jgp.69.3.325>

- Pedersen, T.H., F. de Paoli, and O.B. Nielsen. 2005. Increased excitability of acidified skeletal muscle: role of chloride conductance. *J. Gen. Physiol.* 125:237–246. <http://dx.doi.org/10.1085/jgp.200409173>
- Pedersen, T.H., W.A. Macdonald, F.V. de Paoli, I.S. Gurung, and O.B. Nielsen. 2009. Comparison of regulated passive membrane conductance in action potential–firing fast- and slow-twitch muscle. *J. Gen. Physiol.* 134:323–337. (published erratum appears in *J. Gen. Physiol.* 2009. 134:525) <http://dx.doi.org/10.1085/jgp.200910291>
- Ruff, R.L., L. Simoncini, and W. Stühmer. 1988. Slow sodium channel inactivation in mammalian muscle: a possible role in regulating excitability. *Muscle Nerve.* 11:502–510. <http://dx.doi.org/10.1002/mus.880110514>
- Sacco, P., D.B. McIntyre, and D.A. Jones. 1994. Effects of length and stimulation frequency on fatigue of the human tibialis anterior muscle. *J. Appl. Physiol.* 77:1148–1154.
- Sahlin, K., A. Alvestrand, R. Brandt, and E. Hultman. 1978. Intracellular pH and bicarbonate concentration in human muscle during recovery from exercise. *J. Appl. Physiol.* 45: 474–480.
- Sakaguchi, M., Y. Inaishi, Y. Kashihara, and M. Kuno. 1991. Release of calcitonin gene-related peptide from nerve terminals in rat skeletal muscle. *J. Physiol.* 434:257–270.
- Sejersted, O.M., and G. Sjøgaard. 2000. Dynamics and consequences of potassium shifts in skeletal muscle and heart during exercise. *Physiol. Rev.* 80:1411–1481.
- Sever, M.S., E. Erek, R. Vanholder, G. Kantarci, M. Yavuz, A. Turkmen, H. Ergin, M.Y. Tulbek, M. Duranay, G. Manga, et al; Marmara Earthquake Study Group. 2003. Serum potassium in the crush syndrome victims of the Marmara disaster. *Clin. Nephrol.* 59:326–333.
- Sheff, M.F., and S.I. Zacks. 1982. Interstitial space of mouse skeletal muscle. *J. Physiol.* 328:507–519.
- Sjøgaard, G. 1990. Exercise-induced muscle fatigue: the significance of potassium. *Acta Physiol. Scand. Suppl.* 593:1–63.
- Thomassen, M., A.J. Rose, T.E. Jensen, S.J. Maarbjerg, L. Bune, M. Leites, E.A. Richter, J. Bangsbo, and N.B. Nordsborg. 2011. Protein kinase C $\alpha$  activity is important for contraction-induced FXR1 phosphorylation in skeletal muscle. *Am. J. Physiol. Regul. Integr. Comp. Physiol.* 301:R1808–R1814. <http://dx.doi.org/10.1152/ajpregu.00066.2011>