

Published in final edited form as:

Trends Neurosci. 2012 February ; 35(2): 111–122. doi:10.1016/j.tins.2011.09.004.

Developmental Neuroplasticity After Cochlear Implantation

Andrej Kral^{1,2} and Anu Sharma^{3,CA}

¹Institute of Audioneurotechnology & Dept. of Experimental Otology, ENT Clinics, Medical University Hannover, Germany

²School of Behavioral and Brain Sciences, University of Texas at Dallas, USA

³Dept. of Speech, Language and Hearing Science and Institute of Cognitive Science, University of Colorado at Boulder, Boulder, USA

Abstract

Cortical development is dependent on stimulus-driven learning. The absence of sensory input from birth, as occurs in congenital deafness, affects normal growth and connectivity needed to form a functional sensory system—resulting in deficits in oral language learning. Cochlear implants bypass cochlear damage by directly stimulating the auditory nerve and brain, making it possible to avoid many of the deleterious effects of sensory deprivation. Congenitally deaf animals and children who receive implants provide a platform to examine the characteristics of cortical plasticity in the auditory system. In this review, we discuss the existence of, time limits for, and mechanistic constraints on sensitive periods for cochlear implantation and describe the effects of multimodal and cognitive re-organization that results from long-term auditory deprivation.

Introduction

When listening, the brain has to accomplish two functions: First, it has to analyze sound into acoustic features and represent those features that are essential for the differentiation of biologically-important sounds. Second, it has to categorize these essential acoustic features into a representation (i.e., an auditory object) resistant to the inherent variability present in the sensory world. The representation of auditory objects is individual (subjective) and is critically dependent upon learning.

During learning, a sensory stimulus gains new behavioral significance, resulting in a dynamic reorganization of the representation of the features and objects associated with that sensory stimulus [1]. Receptive fields in the auditory cortex change after sufficient training [2–4], reflecting improvements in the performance of the learned task [5]. Both subcortical and cortical mechanisms contribute to this process. In the juvenile brain, the capacity for such plastic reorganization is greater [6–8], partly due to developmental changes in the molecular machinery of synaptic plasticity [9,10]. Such developmental periods of higher neuronal plasticity are called sensitive periods [11]. Different sensitive periods exist for different behavioral functions [12], most likely due to differences in underlying neuronal structures and functions and differences in maturational rates [13,14]. Although most sensitive periods have an end-point after which learning is compromised, recent evidence suggests that some sensitive periods can be extended by certain sensory manipulations such as long-term exposure to continuous non-patterned acoustic stimulation [15,16]. Thus, given high levels of juvenile plasticity, the existence of sensitive periods and the dependence of

postnatal development and learning on sensory experience [17,18], a question of interest that arises is what are the effects of sensory deprivation on development? In this review, we explore the consequences of congenital deafness on auditory development and functioning.

Congenital deafness is frequent in humans (0.2 – 0.5 cases per 1000 live births) [19]. In profound sensorineural deafness, the human auditory nerve often survives the loss of inner ear hair cells [20–22] and is available to serve as a target for artificial (electrical) stimulation. Cochlear implants are devices that bypass a non-functional inner ear (organ of Corti) and provide direct stimulation to the auditory nerve. Electrical stimulation induces a pattern of activity that differs from acoustic stimulation, but which nonetheless, mimics the essential coding principles of the cochlea [23,24]. This allows most implant recipients to differentiate speech sounds and interpret auditory input [19]. There are ~300,000 cochlear implant users worldwide, including ~80,000 infants and children [19].

Children that become deaf before the development of language (i.e., prelingually deaf), if fitted with a cochlear implant early in childhood, demonstrate remarkable success in acquiring spoken language, especially if exposed to enriched language environments and supported by committed parents and caregivers [25,26]. However, implantation in later childhood results in successively less benefit [25,26], and implantation in the elementary school age or later, as a rule, does not lead to good speech understanding [27–30]. Late-implanted subjects can detect the auditory stimulus (i.e., they hear), but the majority of them are not able to appropriately discriminate complex sounds in everyday situations even after many years of implant use. The consequence is substantially compromised speech understanding and oral language learning.

Taken together, the differences in performance of early and late-implanted children demonstrate a sensitive period for cochlear implantation in early childhood. As we discuss in this review, neuronal mechanisms underlying sensitive periods can be explored in animal models (from cellular, synaptic to systems level), but, due to the frequent clinical use of cochlear implants, such theories can also be directly investigated in the human brain. Therefore, the auditory system has developed into a model system for exploring the effects of sensory deprivation - and its subsequent restoration - with remarkably complementary results being observed across animal and human cochlear implant users. This article reviews the evidence for the existence of a sensitive period for successful cochlear implantation, explores its underlying neural mechanisms, and describes the developmental and functional consequences when implantation occurs beyond this sensitive period.

Sensitive periods for cortical development after cochlear implantation

Although many properties of the auditory system are innate [17], the auditory system is susceptible to extensive reorganization when extrinsic input is abnormal during development [7,31,32]. Complete absence of auditory input in animals, through either pharmacological deafening [33] or genetic deafness (e.g., congenitally deaf strains of animals [34]), may serve to differentiate innate vs. extrinsically driven (or learned) properties of the auditory system. For example, the general wiring pattern in the subcortical afferent auditory system develops, in part, before hearing onset and is consequently preserved in deafness [35]. Consequently, cochlear implant stimulation results in activation of the auditory system from the auditory nerve up to the auditory cortex in implant recipients [36–38]. Some auditory feature sensitivity can be observed in deaf animals [39–42], however, it is rudimentary [40, 42]. Additionally, synaptic immaturity [43,44], dystrophic changes in neurons [45,46] and numerous other functional deficits have been observed in deaf animals. For example, a prominent increase in the number of non-responding units has been found [40] (Fig. 1A), along with a reduced maximum evoked firing rate [40] (Fig. 1B), and a reduced dynamic

range of cortical responses [40] (Fig. 1C), possibly resulting from changes in homeostatic synaptic scaling in the absence of input. These deficits substantially compromise representation of dynamically-changing sound intensity (e.g. speech) in deaf individuals. In addition, prominent changes in cochleotopic organization of the cortex have been described (Fig. 1D) [37], although the extent of the effect differs in different experimental conditions, varying from rudimentary cochleotopy ([36,37,47] (see also [15] to compare effects of rearing under noisy conditions) to complete absence of cochleotopy [48]. Smearing, but rudimentary cochleotopy has been additionally observed in the inferior colliculus [49,50] and the cochlear nucleus [50,51]. Patchy patterns of cortical activity were observed in some neonatally deafened animals [37,47,48], possibly as a consequence of patchy degeneration of the spiral ganglion cells resulting from the deafening procedure using ototoxic agents. Reduced cochleotopy leads to smearing of the cochlear place information, thus further compromising discrimination of excited regions in the cochlea (spectral information). Additionally, cortical hypersensitivity has been described at the systems level (Fig. 1E) [52] as well as at the cellular level [53,54]. Cortical hypersensitivity further aggravates effects of the reduced dynamic range. However, some preserved feature sensitivity has been reported in the auditory system [55–58]. For example, although cortical sensitivity to binaural localization cues is preserved at a rudimentary level, the sensitivity to this cue is significantly reduced in deafness, along with contralaterality and other features of cortical responses [59].

Chronic electrical stimulation using a single channel portable signal processor (commonly used in animal studies) results in an expansion in cortical representation of the stimulated region of the cochlea [55,60] (Fig. 1) and improves entrainment to the stimulus in the midbrain [55,57,58]. This process is extensive (expansions of activated cortical areas up to a factor of 5 were demonstrated [61]) and slow (it takes place over a period of several months [61]). On the other hand, multichannel stimulation (similar to human cochlear implants), which activates many regions of the cochlea, in an asynchronous manner, does not result in such extensive expansions, most likely due to competition of individual channels for neuronal space [48,62]. In addition to the simple expansion of the activated areas, maturational changes in cortical response properties have also been documented [60,63]. In deaf animals that are acutely stimulated with an implant (i.e., naive deaf animals who have no hearing experience before the experiment), cortical units respond in a uniform manner to different electrical stimuli. However, in animals that are chronically stimulated, differential responses to different auditory stimuli are observed, indicating development of feature sensitivity [63]. Chronically stimulated animals also demonstrate an expanded dynamic range in unit activity [63]. These aspects of cortical maturation tend to diminish as the age at which cochlear implantation occurs increases, demonstrating a sensitive period for cortical plasticity [61,63] (Fig. 2A). Age-dependence is most prominent in long-term chronically stimulated animals and shows hemispheric specificity (Fig. 2B, C): in congenitally deaf cats, a shorter sensitive period (of ~3.5 months) has been demonstrated for the cortex ipsilateral to the stimulated ear, and a longer sensitive period (of ~5 months) for the hemisphere contralateral to the stimulated ear [61]. This implies that several sensitive periods exist, depending on which hemisphere is investigated. Thus, both hemispheres profit from unilateral implantation only at a very young age.

Large population studies in congenitally deaf children have shown that they benefit most when cochlear implantation takes place within the first 3.5 years of life, when the central auditory pathways show maximal plasticity [64–68]. The latency of the P1 component of the cortical auditory evoked potential (considered a biomarker of cortical maturation) decreases rapidly, and reaches the normal age-range in children who receive an implant before 3.5 years of age [64–67]. In contrast, children who receive implants after age 7 years show abnormal cortical responses, even after many years of cochlear implant use (Fig 3I) [64–67].

These age cut-offs, determined by electrophysiological studies, correspond closely to studies of Positron Emission Tomography (PET) measurements of resting cortical metabolic rate and regional density cerebral blood flow, which show decreased spontaneous glucose metabolism (due to years of auditory deprivation) in the auditory cortices of children implanted prior to 4 years of age [69–71]. On the other hand, children implanted after 6.5–7.5 years of deafness show normal metabolism in higher-order auditory cortices, suggesting that these areas were unavailable for auditory processing, likely due to functional re-specialization of these areas due to long-term sensory deprivation [69–72]. There is also a close correspondence between the age cut-offs described in the electrophysiological and PET studies and the speech and language performance of congenitally deaf, implanted children. Children who receive implants before 3–4 years of age show significantly higher speech perception scores and better language skills compared to children implanted after age 6–7 years [25,26,73–77]. Recent studies have investigated whether children implanted before 1 year of age demonstrate even greater benefit in behavioral auditory performance, with outcomes depending on the experimental paradigm [77,78].

Taken together, data from deaf children are largely consistent with animal studies and provide evidence of the existence of sensitive periods in early childhood. Thus, cochlear implantation during the sensitive period of the first 3–4 years takes place in a maximally plastic auditory system, allowing cortical maturation to progress.

Neuronal mechanisms underlying sensitive periods for cochlear implantation

Delays in synaptogenesis

Synapses are in constant turnover, they appear and disappear at all ages [79]. During development, there is a phase of pronounced turnover with a predominance for establishing new contacts, and thus, a net synaptogenesis [80,81], and which is subsequently followed by a net loss of synapses [82]. The functional effects of synaptic development (synaptogenesis and maturation of synaptic properties) can be traced using functional measures at the meso-scale (Fig. 4A, B). Functional synaptogenesis in auditory cortex accelerates around hearing onset in cats and culminates between the 1st and the 2nd month after birth in the hearing cat, to decrease to adult values at around 3–4 months [52] (a similar time course of synaptic counts, as evaluated anatomically, has been described in the primary visual cortex [83–85]). The time-frame for the appearance of activity in infragranular cortical layers is slightly delayed compared to the peak of synaptogenesis in hearing cats (Fig. 4A, B).

In deaf animals, functional synaptogenesis has been found to be significantly modified; it is delayed by ~2 months (peaking at ~4 months) and the subsequent reduction in synaptic activity is more pronounced than in hearing controls [52] (Fig. 4A, B). Although activity in the deep cortical layers is transiently observed in deaf animals, it disappears at 4 months of age [52], demonstrating incompetence to sufficiently activate these layers from this age onwards. These results demonstrate that the peak time and extent of postnatal synaptogenesis is dependent on experience. The visual system shows similar experience-dependency in development [81,84,85]. When synapses are generated without reference to the needs of the organism, although overall synaptogenesis is increased (albeit delayed), essential synapses may not get established, and some of them are additionally lost in the subsequent phase of synaptic pruning in the absence of hearing. In congenital deafness, synaptic development in the absence of hearing thus leads to functionally incompetent neuronal networks [52,60,63]. Both persistent immaturity (developmental delays and alterations) as well as degenerative changes have been observed in the cortex of deaf cats [52].

In normal hearing humans, synaptic density peaks at about 2–4 years in the temporal cortex, after which a decline in synaptic numbers follows [82]. It is of interest to note that the age of peak synaptogenesis coincides with the 3.5 year timeframe for optimal cochlear implantation in children. Latencies of cortical auditory evoked responses reflect age-related changes including synaptogenesis [13] and delayed P1 latencies in deaf children (prior to cochlear implantation) (Fig. 3 F, G & H) suggest that, in humans (as in cats), deafness results in a delayed synaptogenesis in the auditory cortex. Taken together, the animal and human data suggest that delays in experience-dependent synaptogenesis at least partly underlie the sensitive period during which auditory experience must be provided to a child in order to accelerate the establishment of essential synapses and subsequent refinement of synaptic networks.

Deficits in cortico-cortical interactions

As we have described, in early deafness, there is a pronounced reduction in synaptic plasticity in the auditory cortex [86]. This change is also accompanied by changes in excitatory-inhibitory balance [52,53,54]. Nevertheless, even in adults there is some residual plasticity both in animals [61] as well as in humans [27,28,66,87]. The presence of residual plasticity in late-implanted, prelingually, deaf subjects, should in principle allow levels of speech performance comparable to early-implanted children after longer periods of experience with the implant. However, late-implanted subjects continue to show poor speech recognition and auditory performance even after long durations of implant use (albeit often with minor improvements [27]). This indicates that in addition to decreasing synaptic plasticity other, more complex, factors are responsible for the closing of sensitive periods. As we will describe, these factors are related to the integrative functions of the auditory system. The naive auditory cortex shows a reduced sensitivity to features of auditory inputs (Fig. 2), leading to a smeared central representation of auditory stimuli (e.g. deficient coding of stimulus intensity, incorrect representation of the position of the activated site in the cochlea as well as temporal properties of the input). To be able to categorize acoustic features into auditory objects, the distinctive features must be accurately represented in the brain. A deficient representation of acoustic (or electric) features complicates discrimination of auditory stimuli and subsequently affects the starting point for learning.

The auditory cortex represents a functional unit composed of areas with different functions; historically, these are viewed in a so-called hierarchical order, from lower order to higher order areas [88], although they together represent one highly interconnected functional unit. Proper functioning of the auditory system is dependent on tight mutual links between these areas. Only those patterns of neuronal activity can get stabilized in a given area that also fit into the circuitry of other tightly interconnected areas. These interactions between cortical areas, and within modulatory systems of the brain, are essential for normal auditory behavior. Both perceptually and anatomically, bottom-up (from lower order to higher order) and top-down (reverse) interactions have been demonstrated in the auditory system [88–91]. Cortical plasticity depends on this interplay. It is affected by permissive factors (e.g. acetylcholinergic modulation from the basal forebrain [2]) and by the behavioral context, acting via top-down interactions [1,92,93]. Attention further affects cortical processing [94], possibly via non-specific modulatory inputs, but also via top-down influences [95,96]. In the brain, a dynamic ongoing interaction of bottom-up and top-down information flow takes place [1]. The complex interactions within the cortical column are designed to compare bottom-up input, intrinsic processing and cortical top-down feedback [1,97]. Through this interaction, cortical processing can be reorganized depending on the context, biological importance and behavioral success of the function performed. In primary auditory cortex (field A1), such top-down modulation provides information on cognitive factors that affect acoustic feature representation. Top-down interactions may also contribute to filling-in

phenomena [89–91], where higher-level representations affect perception at a lower level (e.g. acoustic feature perception is influenced by auditory object representation, or word representation, etc.). That is, primary areas (including A1) could act as a high-resolution buffer or holding area for information processing at higher levels [98]. Although it is currently not clear where and how auditory objects are represented in the brain, it is likely that this representation is generated in the cortex [99] and requires corticocortical interaction of many different fields.

Infragranular layers are a candidate for the locus of bottom-up and top-down interactions [97,98,100]. They receive input from the thalamus, from supragranular layers of the same column, and also from higher order areas via top-down projections. The top-down projection targets infragranular neurons either within infragranular layers or via their apical dendrites located in supragranular layers. Infragranular layers exert a modulatory influence on layers 2, 3 and 4, and they send feedback (top-down) projections to lower order areas - in the case of field A1, this projection mainly targets the auditory thalamus [63] (Fig. 4A). This circuitry may be involved in the short-term store of information for comparisons of incoming stimuli [60,101].

In congenitally deaf animals, activity between cortical layers is significantly desynchronized in adults [101], and long-latency activity is substantially reduced [60]. Long-latency activity is known to be dependent on corticocortical interactions [102], indicating that deafness impairs corticocortical interactions. This deficit is reversible by chronic electrostimulation with cochlear implants [63]. Additionally, infragranular layers are less active in congenitally deaf animals [101] and this effect is reversed by early cochlear implant stimulation [63]. Such a deficit in activation of deep cortical layers in deaf animals indicates that the neuronal substrate for top-down modulation, control of plasticity and hypothetically filling-in phenomena are deficient in congenital deafness [103].

Consequently, the naive adult auditory cortex no longer shows the high juvenile plasticity required for bottom-up structuring of the neuronal networks; on the other hand it also lacks the substrate for perceptual modulation and control of reduced adult plasticity. A partial de-coupling of the primary auditory field A1 from modulation from higher-order auditory fields likely contributes to the closure of the sensitive period in animals [63,103] (Fig 5A). Correspondingly, in late-implanted early-deaf children, cortical auditory evoked potentials elicited by cochlear implant stimulation are abnormal in morphology (e.g., they typically lack the N1 component with preserved (yet aberrant) P1 component [66,68,106] (Fig. 3L)). N1 is generated in higher-order auditory areas and reflects cortico-cortical interaction, whereas P1 has generators both in primary and higher-order areas [107]. Consequently, the absence of the N1 component in late-implanted children demonstrates deficits in higher-order areas, supporting the notion that top-down influences in late-implanted deaf children are reduced, likely due to partial de-coupling of higher order areas from primary auditory cortex at the end of the sensitive period [66,68,106] (Fig 5A).

Cross-modal reorganization and deficits in multimodal processing

Functional de-coupling of field A1 from higher-order areas is an example of disrupted functional unity of the auditory cortex in deafness. As a result, different auditory areas are differentially recruited for new, non-auditory functions (Fig. 5 C&D), such as visual [72,108–111] and somatosensory [112,66] processing. Such cross-modal reorganization does not diffusely involve all auditory areas, but is rather very differential and specific in the cortical areas it affects [113,114]: field A1 is not involved in visual [113,114] and somatosensory tasks [113], but higher-order areas PAF (posterior auditory field) and DZ (dorsal zone) aid visual localization and motion detection, respectively, in congenitally deaf cats [114]. This specific and localized cross-modal reorganization in deafness may result in

a functional disintegration of the mutual interconnections between auditory areas and serve as one reason for the decreased top-down influence in A1 [63,103].

Consistent with functional disintegration of auditory cortical areas, psychophysical studies demonstrate that global high-level processing are substantially affected by congenital (or perinatal) deafness. Deficits in non-auditory functions have been observed; for example, early deaf subjects are deficient in fine motor coordination [115,116], as well as they demonstrate deficits in working memory and sustained attention in the visual system [117–121]. The working memory deficit is related to the type of language (signed vs. spoken) used for communication [121]. Consequently, the demands of sign language on memory may be higher than those of spoken language. Finally, phonological awareness for spoken language is affected in signing deaf persons [122, 123]. Although it is difficult to completely exclude co-morbid disorders, these results indicate that higher-level functions (even non-auditory) possibly require an auditory reference (via top-down interactions) for proper function [19].

Compensatory (or cross-modal) plasticity in deafness likely occurs as a means to improve interaction with the environment in sensory deprivation [124]. Functional consequences of cross-modal plasticity in deafness include improved visual performance during visual localization, visual attention (both in the peripheral visual space) and in motion detection [125]. On the other hand, it appears that understanding of speech and auditory-visual integration via the cochlear implant is negatively influenced by cross-modal re-organization [126–132] (Fig. 5 E). Furthermore, certain neural networks have been associated with good and poor performance with the cochlear implant. Children who perform well with the cochlear implant appear to activate dorsolateral prefrontal networks which participate in higher cognitive functions such as reasoning, attentional control and working memory, while children who perform poorly with the implant repeatedly show functional specialization of auditory cortical areas for visual processing [128].

Much more research needs to be done to understand the tremendous individual variability seen in cochlear implanted children. A more comprehensive understanding of the neural correlates of individual variability will be critical to developing better habilitation options that are aimed at, and customized for, individual patients. Future directions in patient rehabilitation may include the use of electrophysiological and brain imaging measurements as cortical biomarkers of the functional developmental state of the individual patient, and hence, allow customization of the habilitation options after cochlear implantation [67,106,128,133–135]. An individualized approach to the patient, which takes into account the individually different central compensation processes, would optimize rehabilitation success.

Summary and Conclusions

Studies of children fitted with cochlear implants have established the existence of, and the time limits for, a sensitive period for cochlear implantation. The optimal time for cochlear implantation is within the first 3.5–4.0 years of life (best before the 2nd year of life) when central auditory pathways show the maximum plasticity to sound stimulation. The eventual end of the sensitive period (approximate age 6.5–7.0 years in humans) has consequences for the re-organization of cortical areas and pathways. Animal models have identified mechanisms underlying the sensitive period which include a kaleidoscope of different neuronal mechanisms. These mechanisms include developmental abnormalities in synaptic plasticity resulting in abnormal connectivity, functional disintegration and immaturity of auditory cortical areas, the smearing of feature representations in the auditory system, cross-modal recruitment of some auditory areas for non-auditory functions, and the reorganization

of cognitive functions due to absence of auditory input. The striking similarities between the animal and human studies suggest that deficits in synaptic plasticity, deficiencies in higher order cortical development and cross-modal recruitment are responsible for the well-documented difficulties in oral speech and language skills seen in late-implanted, congenitally deaf children.

On the other hand, early implantation within a brief sensitive period allows more adequate cortical maturation, resulting in the development of speech perception and the acquisition of oral language. Early implantation enables hearing to be put within a behavioral framework by allowing the hearing modality to interact with the environment which provides constant feedback. This is a prerequisite for appropriate learning. The brain is hard-wired for hearing and learning to listen.

Acknowledgments

We would like to acknowledge funding support from the German Science Foundation (DFG Kr 3370)(A.K.) and the National Institutes of Health (NIDCD R01 DC06257)(A.S.).

References

1. Gilbert CD, Sigman M. Brain states: top-down influences in sensory processing. *Neuron*. 2007; 54:677–696. [PubMed: 17553419]
2. Weinberger NM. Specific long-term memory traces in primary auditory cortex. *Nat. Rev. Neurosci.* 2004; 5:279–290. [PubMed: 15034553]
3. Kilgard MP, Merzenich MM. Plasticity of temporal information processing in the primary auditory cortex. *Nat. Neurosci.* 1998; 1:727–731. [PubMed: 10196590]
4. Kilgard MP, Merzenich MM. Cortical map reorganization enabled by nucleus basalis activity. *Science*. 1998; 279:1714–1718. [PubMed: 9497289]
5. Recanzone GH, et al. Plasticity in the frequency representation of primary auditory cortex following discrimination training in adult owl monkeys. *J. Neurosci.* 1993; 13:87–103. [PubMed: 8423485]
6. Sale A, et al. Enrich the environment to empower the brain. *Trends Neurosci.* 2009; 32:233–239. [PubMed: 19268375]
7. Zhang LI, et al. Disruption of primary auditory cortex by synchronous auditory inputs during a critical period. *Proc. Natl. Acad. Sci. U S A.* 2002; 99:2309–2314. [PubMed: 11842227]
8. Nakahara H, et al. Specialization of primary auditory cortex processing by sound exposure in the "critical period". *Proc. Natl. Acad. Sci. U S A.* 2004; 101:7170–7174. [PubMed: 15118079]
9. van Zundert B, et al. Receptor compartmentalization and trafficking at glutamate synapses: a developmental proposal. *Trends Neurosci.* 2004; 27:428–437. [PubMed: 15219743]
10. Morishita H, Hensch TK. Critical period revisited: impact on vision. *Curr. Opin. Neurobiol.* 2008; 18:101–107. [PubMed: 18534841]
11. Kral A, et al. Delayed maturation and sensitive periods in the auditory cortex. *Audiol. Neurootol.* 2001; 6:346–362. [PubMed: 11847463]
12. Ruben RJ. A time frame of critical/sensitive periods of language development. *Acta Oto-Laryngol.* 1997; 117:202–205.
13. Eggermont JJ. Differential maturation rates for response parameters in cat primary auditory cortex. *Aud. Neurosci.* 1996; 2:309–327.
14. Mitchell DE, et al. Development of global motion perception requires early postnatal exposure to patterned light. *Curr. Biol.* 2009; 19:645–649. [PubMed: 19285405]
15. Chang EF, Merzenich MM. Environmental noise retards auditory cortical development. *Science*. 2003; 300:498–502. [PubMed: 12702879]
16. Zhou X, et al. Natural Restoration of Critical Period Plasticity in the Juvenile and Adult Primary Auditory Cortex. *J. Neurosci.* 2011; 31:5625–5634. [PubMed: 21490203]

17. Kral, A.; Pallas, SL. Development of the Auditory Cortex. In: Winer, JA.; Schreiner, CE., editors. *The Auditory Cortex*. Springer: 2010. p. 443-464.
18. Kuhl PK. Early language acquisition: cracking the speech code. *Nat. Rev. Neurosci.* 2004; 5:831–843. [PubMed: 15496861]
19. Kral A, O'Donoghue GM. Profound deafness in childhood. *N .Engl. J. Med.* 2010; 363:1438–1450. [PubMed: 20925546]
20. Otte J, et al. Ganglion cell populations in normal and pathological human cochleae. Implications for cochlear implantation. *Laryngoscope.* 1978; 88:1231–1246. [PubMed: 672357]
21. Nadol JB. Patterns of neural degeneration in the human cochlea and auditory nerve: implications for cochlear implantation. *Otolaryngol. Head Neck Surg.* 1997; 117:220–228. [PubMed: 9334769]
22. Nadol JB, Eddington DK. Histopathology of the inner ear relevant to cochlear implantation. *Adv. Otorhinolaryngol.* 2006; 64:31–49. [PubMed: 16891835]
23. Hartmann, R.; Kral, A. Central Responses to Electrical Stimulation. In: Zeng, FG.; Popper, AN.; Fay, RR., editors. *Cochlear Implants: Auditory Prostheses and Electric Hearing*. Springer: 2004. p. 213-285.
24. Dorman MF, Wilson BS. The design and function of cochlear implants. *American Scientist.* 2004; 92:436–445.
25. Svirsky MA, et al. Development of language and speech perception in congenitally, profoundly deaf children as a function of age at cochlear implantation. *Audiol. Neurootol.* 2004; 9:224–233. [PubMed: 15205550]
26. McConkey Robbins A, et al. Effect of age at cochlear implantation on auditory skill development in infants and toddlers. *Arch. Otolaryngol. Head Neck Surg.* 2004; 130:570–574. [PubMed: 15148178]
27. Schramm D, et al. Cochlear implantation for adolescents and adults with prelinguistic deafness. *Otol. Neurotol.* 2002; 23:698–703. [PubMed: 12218622]
28. Tong YC, et al. Perceptual studies on cochlear implant patients with early onset of profound hearing impairment prior to normal development of auditory, speech, and language skills. *J. Acoust. Soc. Am.* 1988; 84:951–962. [PubMed: 3183213]
29. Busby PA, et al. Psychophysical studies using a multiple-electrode cochlear implant in patients who were deafened early in life. *Audiology.* 1992; 31:95–111. [PubMed: 1610317]
30. Busby PA, et al. The perception of temporal modulations by cochlear implant patients. *J. Acoust. Soc. Am.* 1993; 94:124–131. [PubMed: 8354754]
31. Stanton SG, Harrison RV. Abnormal cochleotopic organization in the auditory cortex of cats reared in a frequency augmented environment. *Aud. Neurosci.* 1996; 2:97–107.
32. Kitzes LM, Semple MN. Single-unit responses in the inferior colliculus: effects of neonatal unilateral cochlear ablation. *J. Neurophysiol.* 1985; 53:1483–1500. [PubMed: 4009229]
33. Leake PA, et al. Chronic electrical stimulation by a cochlear implant promotes survival of spiral ganglion neurons after neonatal deafness. *J. Comp. Neurol.* 1999; 412:543–562. [PubMed: 10464355]
34. Heid S, et al. A model for prelingual deafness, the congenitally deaf white cat--population statistics and degenerative changes. *Hear. Res.* 1998; 115:101–112. [PubMed: 9472739]
35. Heid S, et al. Afferent projection patterns in the auditory brainstem in normal and congenitally deaf white cats. *Hear. Res.* 1997; 110:191–199. [PubMed: 9282901]
36. Hartmann R, et al. Response of the primary auditory cortex to electrical stimulation of the auditory nerve in the congenitally deaf white cat. *Hear. Res.* 1997; 112:115–133. [PubMed: 9367234]
37. Raggio MW, Schreiner CE. Neuronal responses in cat primary auditory cortex to electrical cochlear stimulation. III. Activation patterns in short- and long-term deafness. *J. Neurophysiol.* 1999; 82:3506–3526. [PubMed: 10601478]
38. Gilley PM, et al. Cortical reorganization in children with cochlear implants. *Brain Res.* 2008; 1239:56–65. [PubMed: 18775684]
39. Snyder R, et al. Temporal resolution of neurons in cat inferior colliculus to intracochlear electrical stimulation: effects of neonatal deafening and chronic stimulation. *J. Neurophysiol.* 1995; 73:449–467. [PubMed: 7760111]

40. Tillein J, et al. Cortical representation of interaural time difference in congenital deafness. *Cereb. Cortex.* 2010; 20:492–506. [PubMed: 19906808]
41. Raggio MW, Schreiner CE. Neuronal responses in cat primary auditory cortex to electrical cochlear stimulation. I. Intensity dependence of firing rate and response latency. *J. Neurophysiol.* 1994; 72:2334–2359. [PubMed: 7884463]
42. Leake PA, et al. Topography of auditory nerve projections to the cochlear nucleus in cats after neonatal deafness and electrical stimulation by a cochlear implant. *J. Assoc. Res. Otolaryngol.* 2008; 9:349–372. [PubMed: 18574634]
43. Ryugo DK, et al. Restoration of auditory nerve synapses in cats by cochlear implants. *Science.* 2005; 310:1490–1492. [PubMed: 16322457]
44. Ryugo DK, et al. Synaptic plasticity after chemical deafening and electrical stimulation of the auditory nerve in cats. *J. Comp. Neurol.* 2010; 518:1046–1063. [PubMed: 20127807]
45. Lustig LR, et al. Changes in the cat cochlear nucleus following neonatal deafening and chronic intracochlear electrical stimulation. *Hear Res.* 1994; 74:29–37. [PubMed: 8040097]
46. Hardie NA, Shepherd RK. Sensorineural hearing loss during development: morphological and physiological response of the cochlea and auditory brainstem. *Hear. Res.* 1999; 128:147–165. [PubMed: 10082295]
47. Raggio MW, Schreiner CE. Neuronal responses in cat primary auditory cortex to electrical cochlear stimulation: IV. Activation pattern for sinusoidal stimulation. *J. Neurophysiol.* 2003; 89:3190–3204. [PubMed: 12783954]
48. Fallon JB, et al. Cochlear implant use following neonatal deafness influences the cochleotopic organization of the primary auditory cortex in cats. *J. Comp. Neurol.* 2009; 512:101–114. [PubMed: 18972570]
49. Snyder RL, et al. Chronic intracochlear electrical stimulation in the neonatally deafened cat. I: Expansion of central representation. *Hear. Res.* 1990; 50:7–33. [PubMed: 2076984]
50. Vollmer M, et al. Spatial selectivity to intracochlear electrical stimulation in the inferior colliculus is degraded after long-term deafness in cats. *J. Neurophysiol.* 2007; 98:2588–2603. [PubMed: 17855592]
51. Leake PA, et al. Postnatal refinement of auditory nerve projections to the cochlear nucleus in cats. *J. Comp. Neurol.* 2002; 448:6–27. [PubMed: 12012373]
52. Kral A, et al. Postnatal Cortical Development in Congenital Auditory Deprivation. *Cereb. Cortex.* 2005; 15:552–562. [PubMed: 15319310]
53. Kotak VC, et al. Hearing loss raises excitability in the auditory cortex. *J. Neurosci.* 2005; 25:3908–3918. [PubMed: 15829643]
54. Vale C, et al. Unilateral cochlear ablation produces greater loss of inhibition in the contralateral inferior colliculus. *Eur. J. Neurosci.* 2004; 20:2133–2140. [PubMed: 15450092]
55. Snyder RL, et al. Chronic intracochlear electrical stimulation in the neonatally deafened cat. II. Temporal properties of neurons in the inferior colliculus. *Hear. Res.* 1991; 56:246–264. [PubMed: 1769918]
56. Hancock KE, et al. Neural coding of interaural time differences with bilateral cochlear implants: effects of congenital deafness. *J. Neurosci.* 2010; 30:14068–14079. [PubMed: 20962228]
57. Shepherd RK, et al. Response of inferior colliculus neurons to electrical stimulation of the auditory nerve in neonatally deafened cats. *J. Neurophysiol.* 1999; 82:1363–1380. [PubMed: 10482755]
58. Vollmer M, et al. Degradation of temporal resolution in the auditory midbrain after prolonged deafness is reversed by electrical stimulation of the cochlea. *J. Neurophysiol.* 2005; 93:3339–3355. [PubMed: 15659529]
59. Kral A, et al. Spatiotemporal patterns of cortical activity with bilateral cochlear implants in congenital deafness. *J. Neurosci.* 2009; 29:811–827. [PubMed: 19158306]
60. Klinke R, et al. Recruitment of the auditory cortex in congenitally deaf cats by long-term cochlear electrostimulation. *Science.* 1999; 285:1729–1733. [PubMed: 10481008]
61. Kral A, et al. Hearing after congenital deafness: central auditory plasticity and sensory deprivation. *Cereb. Cortex.* 2002; 12:797–807. [PubMed: 12122028]

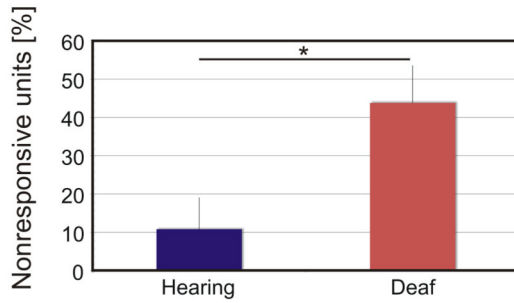
62. Leake PA, et al. Plasticity in central representations in the inferior colliculus induced by chronic single- vs. two-channel electrical stimulation by a cochlear implant after neonatal deafness. *Hear Res.* 2000; 147:221–241. [PubMed: 10962187]
63. Kral A, et al. Cochlear implants: cortical plasticity in congenital deprivation. *Prog. Brain Res.* 2006; 157:283–313. [PubMed: 17167917]
64. Sharma A, et al. A sensitive period for the development of the central auditory system in children with cochlear implants: implications for age of implantation. *Ear Hear.* 2002; 23:532–539. [PubMed: 12476090]
65. Dorman MF, et al. Central auditory development: evidence from CAEP measurements in children fit with cochlear implants. *J Commun Disord.* 2007; 40:284–294. [PubMed: 17433357]
66. Sharma A, et al. Deprivation-induced cortical reorganization in children with cochlear implants. *Int. J. Audiol.* 2007; 46:494–499. [PubMed: 17828665]
67. Sharma A, et al. Cortical development, plasticity and re-organization in children with cochlear implants. *J. Commun. Disord.* 2009; 42:272–279. [PubMed: 19380150]
68. Ponton CW, Eggermont JJ. Of kittens and kids: altered cortical maturation following profound deafness and cochlear implant use. *Audiol. Neurootol.* 2001; 6:363–380. [PubMed: 11847464]
69. Lee DS, et al. Cross-modal plasticity and cochlear implants. *Nature.* 2001; 409:149–150. [PubMed: 11196628]
70. Lee HJ, et al. Preoperative differences of cerebral metabolism relate to the outcome of cochlear implants in congenitally deaf children. *Hear Res.* 2005; 203:2–9. [PubMed: 15855024]
71. Lee JS, et al. PET evidence of neuroplasticity in adult auditory cortex of postlingual deafness. *J. Nucl. Med.* 2003; 44:1435–1439. [PubMed: 12960189]
72. Nishimura H, et al. Sign language 'heard' in the auditory cortex. *Nature.* 1999; 397:116. [PubMed: 9923672]
73. Geers AE. Factors influencing spoken language outcomes in children following early cochlear implantation. *Adv. Otorhinolaryngol.* 2006; 64:50–65. [PubMed: 16891836]
74. Holt RF, Svirsky MA. An exploratory look at pediatric cochlear implantation: is earliest always best? *Ear Hear.* 2008; 29:492–511. [PubMed: 18382374]
75. Wang NY, et al. Tracking development of speech recognition: longitudinal data from hierarchical assessments in the Childhood Development after Cochlear Implantation Study. *Otol. Neurotol.* 2008; 29:240–245. [PubMed: 18223451]
76. Harrison RV, et al. Is there a critical period for cochlear implantation in congenitally deaf children? Analyses of hearing and speech perception performance after implantation. *Dev. Psychobiol.* 2005; 46:252–261. [PubMed: 15772969]
77. Niparko JK, et al. Spoken language development in children following cochlear implantation. *JAMA.* 2010; 303:1498–1506. [PubMed: 20407059]
78. Tajudeen BA, et al. Speech perception in congenitally deaf children receiving cochlear implants in the first year of life. *Otol. Neurotol.* 2010; 31(8):1254–1260. [PubMed: 20814343]
79. Holtmaat A, Svoboda K. Experience-dependent structural synaptic plasticity in the mammalian brain. *Nat. Rev. Neurosci.* 2009; 10:647–658. [PubMed: 19693029]
80. Hofer SB, et al. Prior experience enhances plasticity in adult visual cortex. *Nat. Neurosci.* 2006; 9:127–132. [PubMed: 16327785]
81. Hofer SB, et al. Experience leaves a lasting structural trace in cortical circuits. *Nature.* 2009; 457:313–317. [PubMed: 19005470]
82. Huttenlocher PR, Dabholkar AS. Regional differences in synaptogenesis in human cerebral cortex. *J. Comp. Neurol.* 1997; 387:167–178. [PubMed: 9336221]
83. Cragg BG. The development of synapses in the visual system of the cat. *J. Comp. Neurol.* 1975; 160:147–166.
84. Winfield DA. The postnatal development of synapses in the visual cortex of the cat and the effects of eyelid closure. *Brain Res.* 1981; 206:166–171. [PubMed: 7470883]
85. Winfield DA. The postnatal development of synapses in the different laminae of the visual cortex in the normal kitten and in kittens with eyelid suture. *Brain Res.* 1983; 285:155–169. [PubMed: 6616262]

86. Kotak VC, et al. Developmental hearing loss eliminates long-term potentiation in the auditory cortex. *Proc. Natl. Acad. Sci. U S A.* 2007; 104:3550–3555. [PubMed: 17360680]
87. Most T, et al. Cochlear implantation in late-implanted adults with prelingual deafness. *Am. J. Otolaryngol.* 2010; 31:418–423. [PubMed: 20015795]
88. Hackett TA. Information flow in the auditory cortical network. *Hear. Res.* 2011; 271:133–146. [PubMed: 20116421]
89. Giraud AL, et al. Contributions of sensory input, auditory search and verbal comprehension to cortical activity during speech processing. *Cereb. Cortex.* 2004; 14:247–255. [PubMed: 14754865]
90. Davis MH, Johnsrude IS. Hearing speech sounds: top-down influences on the interface between audition and speech perception. *Hear. Res.* 2007; 229:132–147. [PubMed: 17317056]
91. Petkov CI, et al. Encoding of illusory continuity in primary auditory cortex. *Neuron.* 2007; 54:153–165. [PubMed: 17408584]
92. Gilbert CD, Sigman M. Brain states: top-down influences in sensory processing. *Neuron.* 2007; 54:677–696. [PubMed: 17553419]
93. Tang J, Suga N. Modulation of auditory processing by cortico-cortical feedforward and feedback projections. *Proc. Natl. Acad. Sci. U S A.* 2008; 105:7600–7605. [PubMed: 18495931]
94. Fritz JB, et al. Auditory attention--focusing the searchlight on sound. *Curr. Opin. Neurobiol.* 2007; 17:437–455. [PubMed: 17714933]
95. Hochstein S, Ahissar M. View from the top: hierarchies and reverse hierarchies in the visual system. *Neuron.* 2002; 36:791–804. [PubMed: 12467584]
96. Corbetta M, Shulman GL. Control of goal-directed and stimulus-driven attention in the brain. *Nat. Rev. Neurosci.* 2002; 3:201–215. [PubMed: 11994752]
97. Raizada RD, Grossberg S. Towards a theory of the laminar architecture of cerebral cortex: computational clues from the visual system. *Cereb. Cortex.* 2003; 13:100–113. [PubMed: 12466221]
98. Mumford D. On the computational architecture of the neocortex. II. The role of cortico-cortical loops. *Biol. Cybern.* 1992; 66:241–251. [PubMed: 1540675]
99. Nelken I, Bar-Yosef O. Neurons and objects: the case of auditory cortex. *Front. Neurosci.* 2008; 2:107–113. [PubMed: 18982113]
100. Callaway EM. Feedforward, feedback and inhibitory connections in primate visual cortex. *Neural Netw.* 2004; 17:625–632. [PubMed: 15288888]
101. Kral A, et al. Congenital auditory deprivation reduces synaptic activity within the auditory cortex in a layer-specific manner. *Cereb. Cortex.* 2000; 10:714–726. [PubMed: 10906318]
102. Ghoshal A, et al. Cross-sensory modulation of primary sensory cortex is developmentally regulated by early sensory experience. *J. Neurosci.* 2011; 31:2526–2536. [PubMed: 21325520]
103. Kral A. Unimodal and crossmodal plasticity in the "deaf" auditory cortex. *Int. J. Audiol.* 2007; 46:479–493. [PubMed: 17828664]
104. Kral A, et al. Congenital auditory deprivation reduces synaptic activity within the auditory cortex in a layer-specific manner. *Cereb. Cortex.* 2000; 10(7):714–726. [PubMed: 10906318]
105. McGurk H, MacDonald J. Hearing lips and seeing voices. *Nature.* 1976; 264(5588):746–748. [PubMed: 1012311]
106. Sharma A, Dorman MF. Central auditory development in children with cochlear implants: clinical implications. *Adv. Otorhinolaryngol.* 2006; 64:66–88. [PubMed: 16891837]
107. Liégeois-Chauvel C, et al. Evoked potentials recorded from the auditory cortex in man: evaluation and topography of the middle latency components. *Electroencephalogr Clin Neurophysiol.* 1994; 92:204–214. [PubMed: 7514990]
108. Bavelier D, et al. Visual attention to the periphery is enhanced in congenitally deaf individuals. *J. Neurosci.* 2000; 20:RC93. [PubMed: 10952732]
109. Petitto LA, et al. Speech-like cerebral activity in profoundly deaf people processing signed languages: implications for the neural basis of human language. *Proc. Natl. Acad. Sci. U S A.* 2000; 97:13961–13966. [PubMed: 11106400]
110. Finney EM, et al. Visual stimuli activate auditory cortex in the deaf. *Nat. Neurosci.* 2001; 4:1171–1173. [PubMed: 11704763]

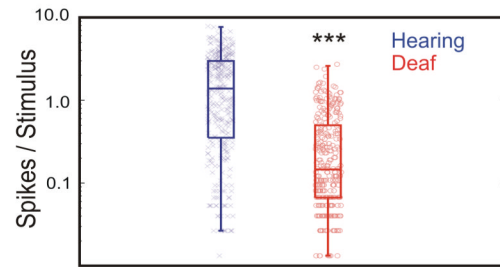
111. Fine I, et al. Comparing the effects of auditory deprivation and sign language within the auditory and visual cortex. *J. Cogn. Neurosci.* 2005; 17:1621–1637. [PubMed: 16269101]
112. Levänen S, Hamdorf D. Feeling vibrations: enhanced tactile sensitivity in congenitally deaf humans. *Neurosci. Lett.* 2001; 301:75–77. [PubMed: 11239720]
113. Kral A, et al. Absence of cross-modal reorganization in the primary auditory cortex of congenitally deaf cats. *Exp. Brain Res.* 2003; 153:605–613. [PubMed: 12961053]
114. Lomber SG, et al. Cross-modal plasticity in specific auditory cortices underlies visual compensations in the deaf. *Nat. Neurosci.* 2010; 13:1421–1427. [PubMed: 20935644]
115. Horn DL, et al. Divergence of fine and gross motor skills in prelingually deaf children: implications for cochlear implantation. *Laryngoscope.* 2006; 116:1500–1506. [PubMed: 16885761]
116. Conway CM, et al. Implicit sequence learning in deaf children with cochlear implants. *Dev. Sci.* 2011; 14:69–82. [PubMed: 21159089]
117. Barker DH, et al. Predicting behavior problems in deaf and hearing children: the influences of language, attention, and parent-child communication. *Dev. Psychopathol.* 2009; 21:373–392. [PubMed: 19338689]
118. Yuçel E, Derim D. The effect of implantation age on visual attention skills. *Int. J. Pediatr. Otorhinolaryngol.* 2008; 72:869–877. [PubMed: 18395272]
119. Pisoni, DB., et al. Efficacy and Effectiveness of Cochlear Implants in Deaf Children. In: Marschark, M.; Hauser, PC., editors. *Deaf Cognition: Foundations and Outcomes.* Oxford University Press; 2008. p. 52-101.
120. Rudner M, et al. Working memory, deafness and sign language. *Scand. J. Psychol.* 2009; 50:495–505. [PubMed: 19778397]
121. Boutla M, et al. Short-term memory span: insights from sign language. *Nat. Neurosci.* 2004; 7:997–1002. [PubMed: 15311279]
122. Koo D, et al. Phonological awareness and short-term memory in hearing and deaf individuals of different communication backgrounds. *Ann. N.Y. Acad. Sci.* 2008; 1145:83–99. [PubMed: 19076391]
123. McQuarrie L, Parrila R. Phonological representations in deaf children: rethinking the "functional equivalence" hypothesis. *J Deaf Stud Deaf Educ.* 2009; 14:137–154. [PubMed: 18635579]
124. Rauschecker JP. Compensatory plasticity and sensory substitution in the cerebral cortex. *Trends Neurosci.* 1995; 18:36–43. [PubMed: 7535489]
125. Bavelier D, Neville HJ. Cross-modal plasticity: where and how? *Nat. Rev. Neurosci.* 2002; 3:443–452. [PubMed: 12042879]
126. Schorr EA, et al. Auditory-visual fusion in speech perception in children with cochlear implants. *Proc. Natl. Acad. Sci. U S A.* 2005; 102:18748–18750. [PubMed: 16339316]
127. Doucet ME, et al. Cross-modal reorganization and speech perception in cochlear implant users. *Brain.* 2006; 129:3376–3383. [PubMed: 17003067]
128. Giraud AL, Lee HJ. Predicting cochlear implant outcome from brain organisation in the deaf. *Restor. Neurol. Neurosci.* 2007; 25:381–390. [PubMed: 17943013]
129. Rouger J, et al. Evidence that cochlear-implanted deaf patients are better multisensory integrators. *Proc. Natl. Acad. Sci. U S A.* 2007; 104:7295–7300. [PubMed: 17404220]
130. Rouger J, et al. McGurk effects in cochlear-implanted deaf subjects. *Brain Res.* 2008; 1188:87–99. [PubMed: 18062941]
131. Gilley PM, et al. The influence of a sensitive period for auditory-visual integration in children with cochlear implants. *Restor. Neurol. Neurosci.* 2010; 28:207–218. [PubMed: 20404409]
132. Buckley KA, Tobey EA. Cross-Modal Plasticity and Speech Perception in Pre- and Postlingually Deaf Cochlear Implant Users. *Ear Hear.* 2011; 32:2–15. [PubMed: 20829699]
133. Gordon KA, et al. Multiple effects of childhood deafness on cortical activity in children receiving bilateral cochlear implants simultaneously. *Clin. Neurophysiol.* 2010; 122:823–833. [PubMed: 21094084]
134. Lazard DS, et al. Phonological processing in post-lingual deafness and cochlear implant outcome. *Neuroimage.* 2010; 49:3443–3451. [PubMed: 19931402]

135. Kraus N, Skoe E. New directions: Cochlear implants. *Ann. N.Y. Acad. Sci.* 2009; 1169:516–517. [PubMed: 19673834]

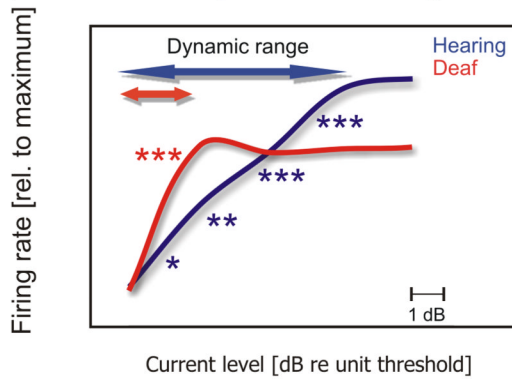
A) More nonresponsive units



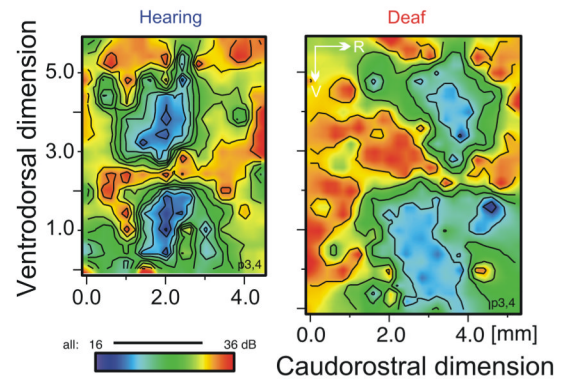
B) Decreased firing rate



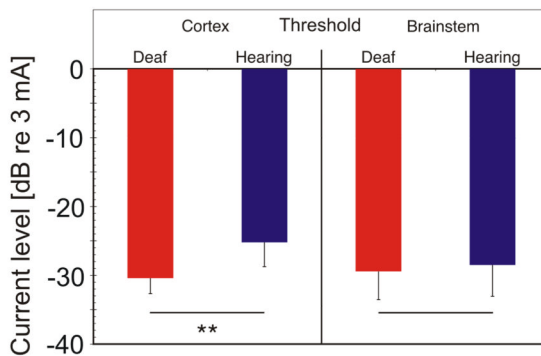
C) Smaller dynamic range



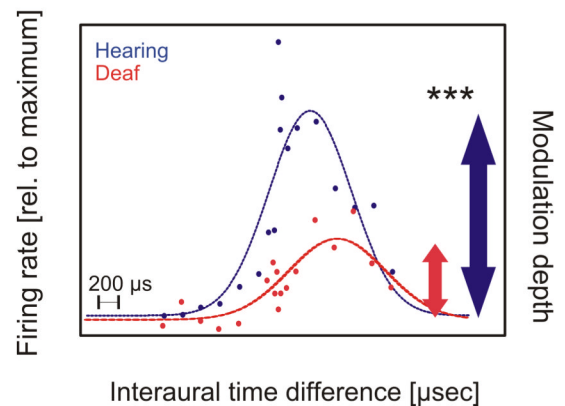
D) Reduced cochleotopy



E) Cortical hypersensitivity



F) Reduced sensitivity to ITDs

**Fig. 1.**

Summary of findings on cortical representation of electrical stimuli in adult congenitally deaf (A–C, E, F) or neonatally deafened cats (D) compared to hearing controls.

A) In deaf animals, a prominent increase of non-responding sites in the primary auditory field A1 has been documented (data from [40]), most likely resulting in a reduction of represented information.

B) The maximum evoked firing rate is lower in deaf animals (figure reproduced with permission from [40]).

C) Population rate-intensity functions in deaf and hearing animals (data from [40]).

Asterisks designate current levels where the increase in firing rate has been significant in

comparison to the next lower current level (2 dB steps). In deaf animals, this was only the case within the first 2 dB above unit threshold, whereas in hearing animals the dynamic range was >8 dB [40] (compare effects of electric stimulation compared to acoustic stimulation [41]).

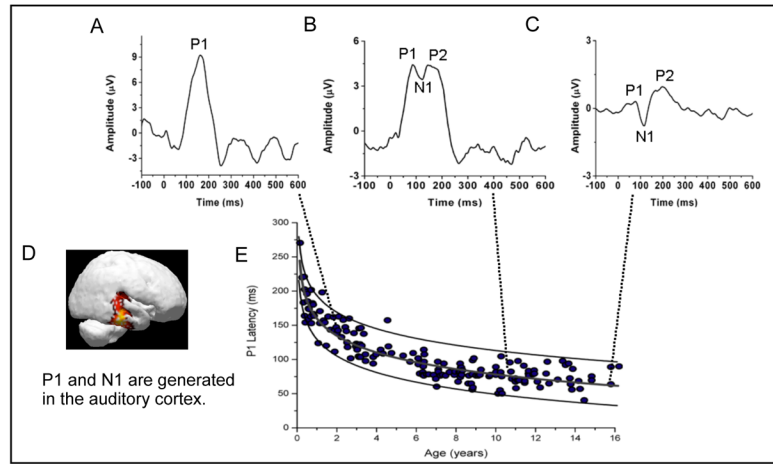
D) Distribution of thresholds for pulsatile stimulation along the cortical dimension in a hearing control (compare [36,47]) and a long-term neonatally deafened animal, both with bipolar (spatially-restricted) electrical stimulation (reproduced with permission from [37]). The hearing animal shows steeper gradients along the cortex, nonetheless, there is a rudimentary cochleotopy in the deaf animal, particularly in the dorsal part of A1 (upper half of the plots).

E) Cortical thresholds of local field potentials and brainstem evoked responses in the same animals (data from [52]). There was no difference in the lowest thresholds of evoked responses in the brainstem, however, deaf animals showed significantly lower thresholds in the cortex, demonstrating a cortical hypersensitivity (compare to [53,55]).

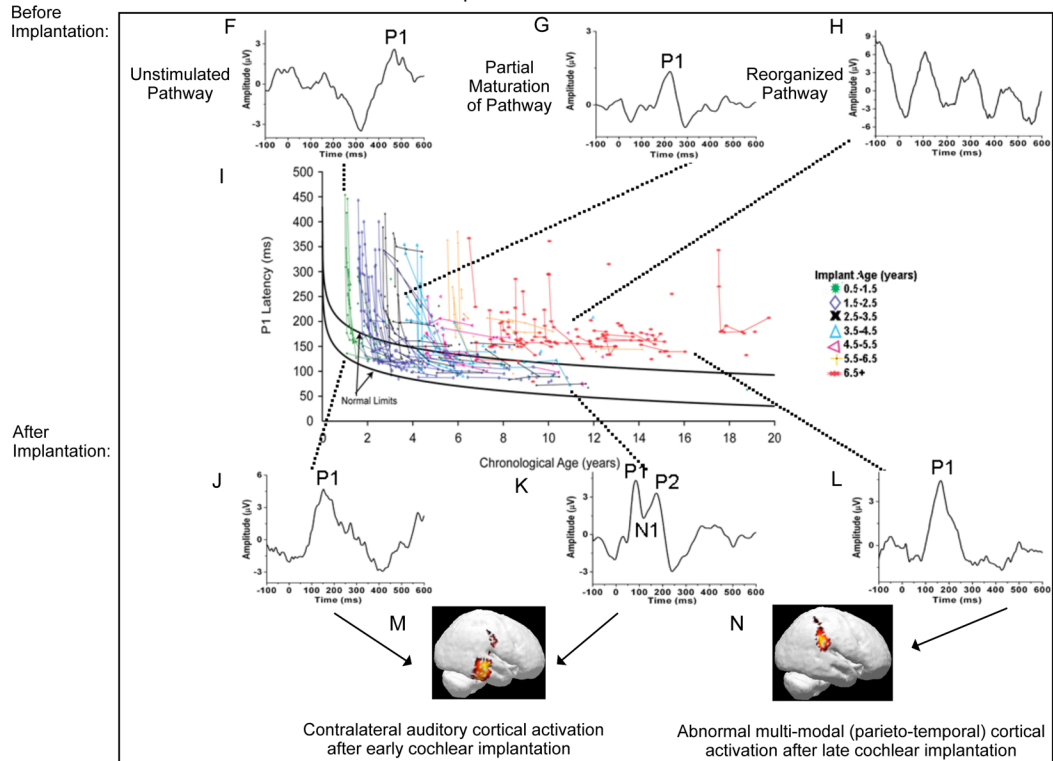
F) Cortical feature sensitivity is rudimentarily preserved for interaural time differences (ITDs, data from [40]) that, in contrast to cochleotopy, are not the consequence of anatomical projection patterns but are extracted from auditory nerve activity in the olivary complex [40]. Thus, some feature sensitivity develops in the absence of hearing experience. However, the sensitivity to ITD was extensively reduced in deaf animals.

Biomarkers of Auditory Cortical Maturation

1: Development in Normal-Hearing Children



2: Development in Deaf Children

**Fig 3.**

Auditory cortical maturation in normal hearing and cochlear implanted children.

1) Development in normal-hearing children: Latency and morphology of the P1 and N1 cortical auditory evoked potential (CAEP) components of the EEG are considered biomarkers of auditory cortical maturation. Schematic CAEP waveforms are shown in panels A–C to illustrate morphological changes in development. The P1 is the predominant morphological component in infancy and early childhood (panel A). Rapid decreases in P1 latency occur in first 3 years of life (panel E). Around pre-adolescence, the CAEP waveform invaginates such that the N1 and P2 components appear in addition to the P1 component (panel B). Smaller latency decreases for the P1 component continue into adulthood (panel E)

and the adult CAEP reflects a smaller P1 component along with larger N1 and P2 components (panel C). A normal range (and 95% confidence intervals) for the latency of the P1 waveform peak at different ages has been established using data from 190 normal hearing children (panel E) (reproduced with permission from [65]). High density EEG (among other measurements) reveal that underlying generators of the P1 component include the primary auditory cortex, while the N1 component receives input from higher order auditory cortex (panel D) (reproduced with permission from [38]).

2) Development in deaf children: CAEP responses have been measured in congenitally deaf children who received cochlear implants at different ages in childhood. Schematic CAEP waveforms are shown in panels F, G, H, J, K & L to illustrate morphological differences. In young children, prior to implantation, abnormal cortical response morphology is seen reflecting either an unstimulated auditory system (panel F), or a system that has received partial stimulation via hearing aids (panel G). Older deaf children show abnormal polyphasic waveforms suggestive of a re-organized auditory cortex (panel H). Developmental trajectories for P1 latencies examined in 231 congenitally deaf children fit with an implant suggest a sensitive period for auditory cortical maturation. Children who received an implant early in childhood (< 3.5 years of age) showed normal P1 latencies within 6–8 months of implant use, while children who were fitted with an implant late in childhood (> 6.5–7 years of age) had delayed/abnormal cortical response latencies even after years of implant use. Children who received an implant between ages 3.5 and 7 years showed variable results, with P1 latencies reaching normal limits for some children and not for others (panel I) (Reproduced with permission from [66]). In early implanted children, an ageappropriate P1 component is seen shortly after implantation and a P1, N1, P2 complex (similar to age-matched normal hearing children) is seen after long-term experience with the implant (panels J&K). High density EEG reveals activation of auditory cortical areas contralateral to the implanted ear for children implanted under age 3.5 years (panel M). In contrast, children who have remained congenitally deaf for ~7 years or longer in childhood show polyphasic responses prior to implantation (panel H) and delayed and/or abnormal P1 responses even after many years of implant usage (panel L). An N1 component is not apparent typically in late implanted children, and high density EEG recordings revealed that auditory stimuli abnormally activated multimodal cortical areas (as opposed to auditory cortical areas) [38]. Such findings suggest that cortical reorganization after the end of the sensitive period is largely final at 6.5–7 years of age (panel N). Panels M and N reproduced with permission from [38].

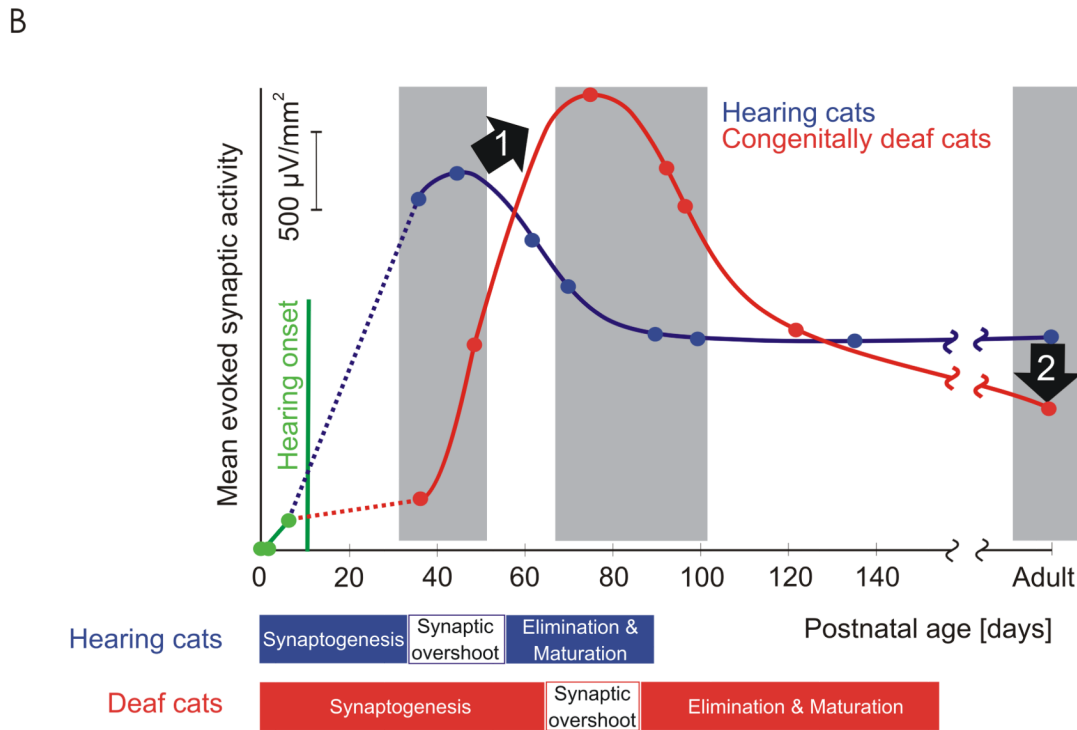
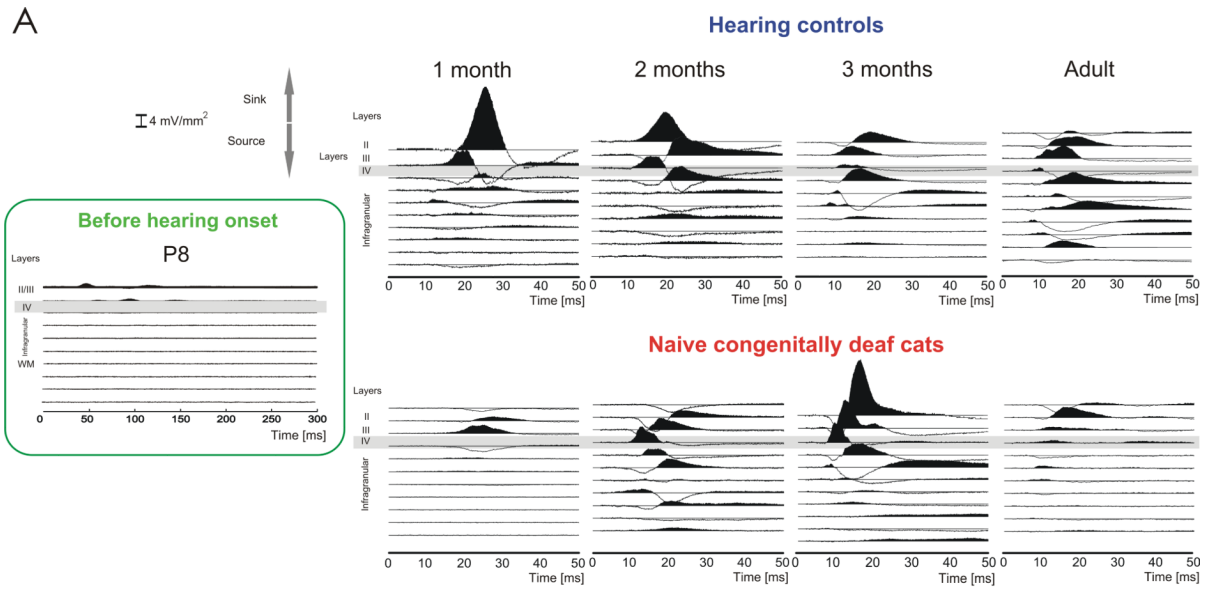
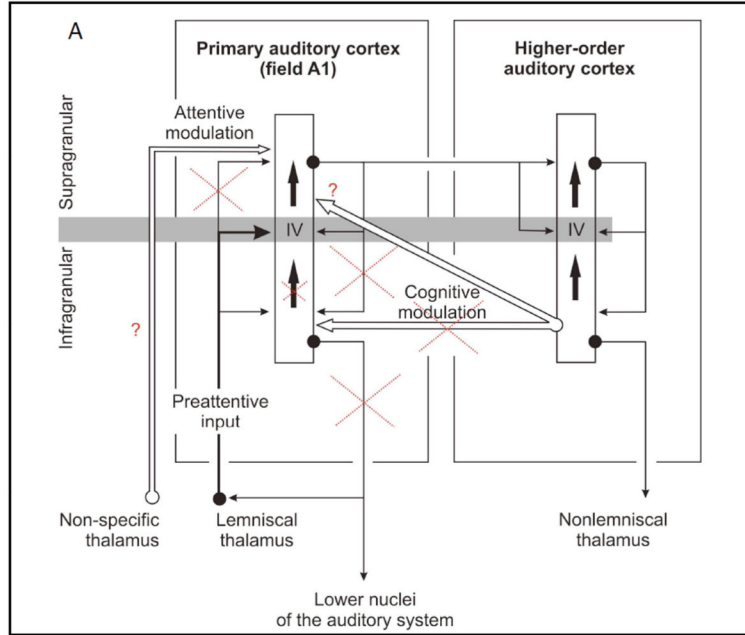


Fig. 4. Developmental alterations in deafness. A) Development of current source density (CSD) profiles (representing the summed extracellular components of synaptic currents) in field A1 with age in hearing controls vs. congenitally deaf cats (reproduced, with permission, from [52]). Stimulus: biphasic pulse applied through a cochlear implant. At postnatal day (P) 0 and 3, no responses in the cortex could be elicited (not shown). At P8 (before hearing onset, hearing thresholds $\gg 100$ dB SPL), small long-latency responses were recorded in supragranular layers. Large responses, mainly in layers 2, 3 and 4, were recorded from hearing controls at ~ 1 month of age. Starting at the 2nd month, amplitudes of the CSDs decreased. From the 3rd month on, structured activity in deep cortical layers appeared. This

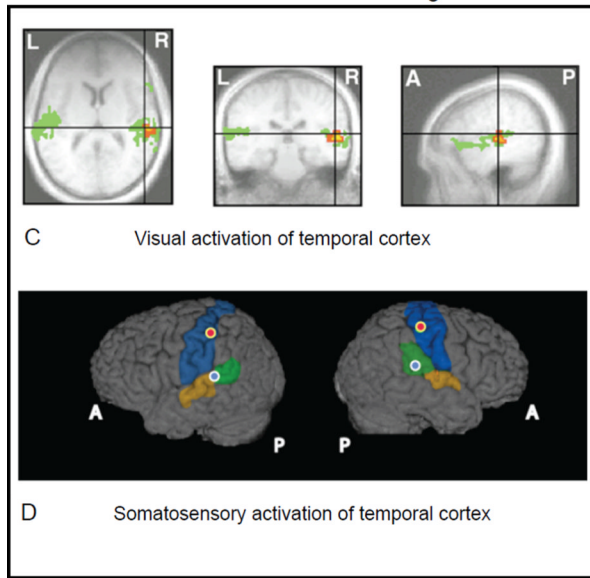
timeline corresponds to synaptogenesis (first weeks of life) and subsequent synaptic pruning in the feline visual cortex [83–85]. Below: In congenitally deaf cats, the development of CSD was delayed, with large responses only being observed at 3 months of age. Additionally, a pronounced reduction of synaptic activity in infragranular layers has been demonstrated at earlier ages in deaf animals [101,103]. B) Quantification of the above results (modified from [19], with permission). Depicted is the mean amplitude of current sinks over 6 penetrations within the most responsive part of the cortex in each animal. Grey bars designate the region of statistically-significant differences between hearing and deaf animals (two-tailed Wilcoxon-Mann-Whitney test, $\alpha=5\%$), and bullets show the data of individual animals. Bullets in adult age represent a grand mean average of 4 animals in each group. A delay in the period of functional synaptogenesis (1) is observed in deaf cats. Furthermore, a decrease in the mean evoked synaptic activity (2), as a result of an exaggerated functional synapse elimination and maturation period, is discernible in adult deaf cats.

Consequences of Long-term Auditory Deprivation

1: Cortico-cortical De-coupling at the End of the Sensitive Period



2: Cross-modal Cortical Re-organization



3: Deficits in Multi-sensory (Auditory-Visual) Integration

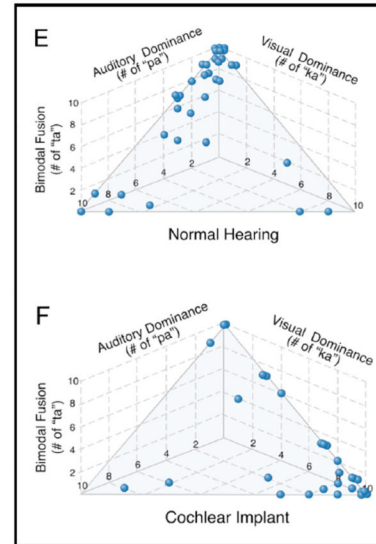


Fig 5. Cortical re-organization and its functional consequences as a result of long-term auditory deprivation in deaf children.
 1. Cortico-cortical de-coupling at the end of the sensitive period: Deaf children who receive a cochlear implant after the end of the sensitive period (at age 7 years) typically show abnormal cortical auditory evoked potentials, including an aberrant P1 response and an absent N1 response (see Fig 3 panel L). The lack of N1 (which reflects input from higher order auditory cortex) is consistent with animal data suggestive of cortico-cortical deficits. A model of functional decoupling in the auditory cortex in deafness is shown in panel A . Lemniscal input targets A1 mainly in layer IV (shaded bar), but also supragranular and

infragranular layers. Neurons in infragranular layers project to layer IV and layer IV projects to supragranular layers. Supragranular layers project back to layer IV and infragranular layers (feedback). Infragranular layers send descending fibers to subcortical nuclei (corticofugal). Feedforward coupling to the higher-order auditory areas is accomplished via supragranular layers, descending projections from higher-order cortex target the infragranular and possibly supragranular layers in A1 (topdown or cognitive modulation). Dashed crosses show which connections are supposedly not functional in congenitally deaf cats [52,63,104]. A similar lack of topdown modulation of incoming auditory stimuli in humans would explain difficulties in oral language learning that are experienced by late implanted children [Reproduced and modified with permission from 103].

2. Cross-modal cortical re-organization: Long-term deafness beyond the sensitive period results in cross-modal cortical re-organization, most likely as a consequence of functional cortico-cortical decoupling between primary and higher-order auditory cortex. Panel C: Functional magnetic resonance imaging (fMRI) reveals activation (green and red patches) in response to visual stimulation in the temporal cortex (including higher-order auditory cortical areas) of deaf adults [reproduced with permission from 110]. Panel D:

Magnetoencephalography (MEG) dipole reconstructions reflect activation of both somatosensory cortex (blue regions) and higher-order auditory cortex (green regions) (including Wernicke's area, in the left hemisphere) in response to tactile stimulation in deaf adults [reproduced with permission from 66]. L-Left, R-Right, A-Anterior and P-Posterior.

3. Deficits in multi-sensory (auditory-visual) integration: Auditory deprivation can result in deficits in processing of multimodal stimulation necessary for language learning. For example, bimodal fusion of the speech sound /ta/ occurs when a visual cue (lipreading) for /ka/ is combined with an auditory cue (listening) for /pa/ (also known as the McGurk Effect [105]). In panels E&F, /ta/ responses indicate auditory visual fusion, while /pa/ responses indicate auditory dominance and /ka/ responses indicate visual dominance. Responses of children with normal hearing suggest auditory dominance (panel E). On the other hand, responses of cochlear implanted children suggest a greater visual dominance (panel F) (reproduced with permission from [126]).