

# Increased expression of $\beta$ -glucosidase A in *Clostridium thermocellum* 27405 significantly increases cellulase activity

Miranda L. Maki,<sup>1,2</sup> Lachlan Armstrong,<sup>2</sup> Kam Tin Leung<sup>2</sup> and Wensheng Qin<sup>1,2,\*</sup>

<sup>1</sup>Biorefining Research Institute; Lakehead University; Thunder Bay, ON CA; <sup>2</sup>Department of Biology; Lakehead University; Thunder Bay, ON CA

**Keywords:** *Clostridium thermocellum*,  $\beta$ -glucosidase, cellulase activity, bioethanol, end-product inhibition

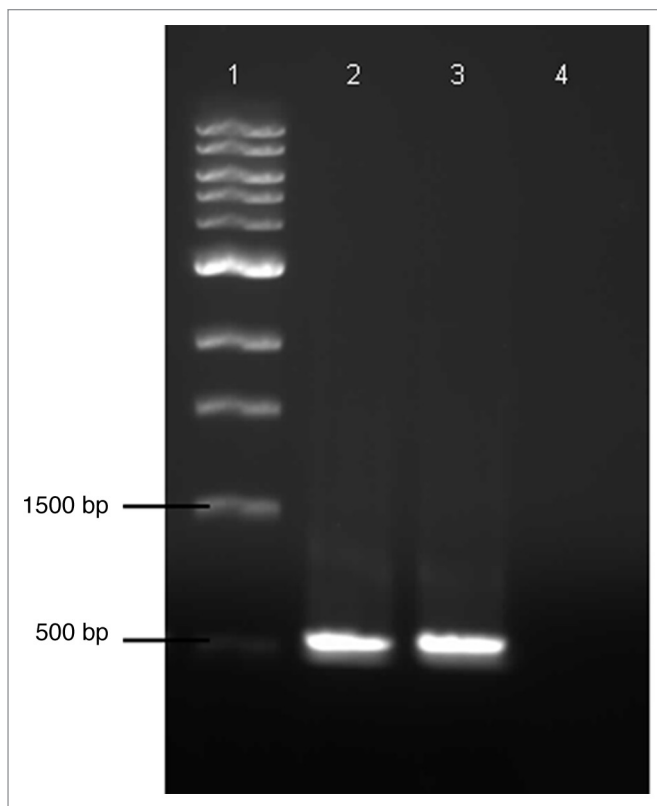
$\beta$ -glucosidase A (*bglA*) in *Clostridium thermocellum* 27405 was increased by expression from shuttle vector pIBgIA in attempts to increase cellulase activity and ethanol titer by lowering the end product inhibition of cellulase. Through a modified electrotransformation protocol *C. thermocellum* transformant (+MC*bglA*) harbouring pIBgIA was produced. The  $\beta$ -glucosidase activity of +MC*bglA* was 2.3- and 1.6-fold greater than wild-type (WT) during late log and stationary phases of growth. Similarly, total cellulase activity of +MC*bglA* was shown to be 1.7-, 2.3- and 1.6-fold greater than WT during, log, late log and stationary phases of growth. However, there was no significant correlation found between increased cellulase activity and increased ethanol titers for +MC*bglA* compared with the WT. *C. thermocellum* has industrial potential for consolidated bioprocessing (CBP) to make a more cost effective production of biofuels; however, the hydrolysis rate of the strain is still hindered by end product inhibition. We successfully increased total cellulase activity by increased expression of *bglA* and thereby increased the productivity of *C. thermocellum* during the hydrolysis stage in CBP. Our work also lends insights into the complex metabolism of *C. thermocellum* for future improvement of this strain.

## Introduction

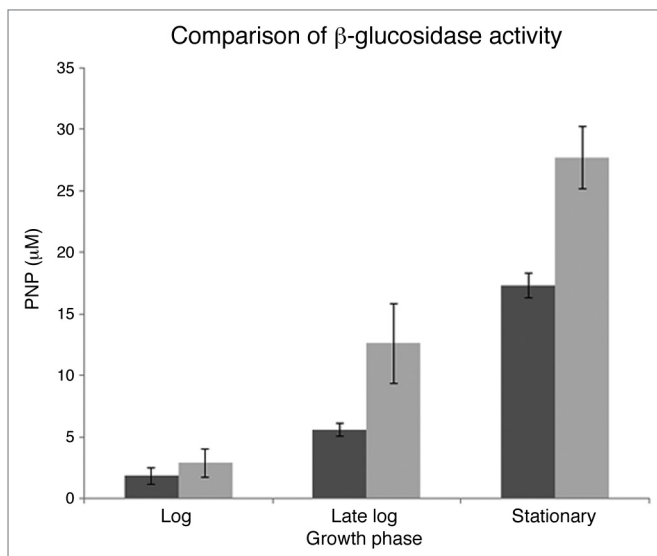
The production and commercialization of biofuels has gained a great deal of attention and support yet there remain some major bottlenecks with its current status; namely, there is a lack of biocatalysts that can work efficiently at high temperatures and under extreme pH conditions. Moreover, few microorganisms produce all the required enzymes for efficient hydrolysis of hemicellulose and cellulose. Additionally, hydrolysis and fermentation of lignocellulosic biomass-derived sugars requires separate steps (i.e., fungal enzymes and *Saccharomyces cerevisiae*, respectively), which in turn is less cost-effective.<sup>1</sup> However, *Clostridium thermocellum* is a great potential candidate for biofuel production due to its ability to combine cellulase production and saccharification of biomass with fermentation in a process referred to as consolidated bioprocessing (CBP).<sup>2</sup> In addition, *C. thermocellum* is a Gram positive, anaerobic, thermophilic, ethanologenic and cellulosome-producing bacteria. This means that during the production of biofuels from cellulosic and hemicellulosic biomass, *C. thermocellum* could decompose the biomass using highly versatile cellulosomes in addition to free cellulases and hemicellulases, and ferment 6-carbon sugars to ethanol without the addition of oxygen. Also, the thermophilic nature, (growth optimum 60°C), would allow easier extraction of the ethanol which requires higher temperatures to volatilize and precipitate.<sup>3</sup> Currently, *C. thermocellum* has yet to be widely exploited in the production of biofuels due to several

limiting factors. For example, *C. thermocellum* can hydrolyze both cellulose and hemicellulose; however, it can only ferment 6-carbon sugars and thus 5-carbon sugars are not being utilized. Additionally, end products of fermentation such as lactic and acetic acids, as well as ethanol can be toxic to *C. thermocellum*. Also, stresses such as toxicity and oxygen exposure can cause sporulation because it is a spore-forming bacterium.<sup>4,5</sup> Further, cellulase activity in *Clostridium cellulolyticum* is shown to be inhibited by end products such as cellobiose.<sup>6</sup> Inhibition of cellulase activity ultimately represents one of the greatest limitations to using *C. thermocellum* for biofuels. Without maximum hydrolysis of cellulosic biomass we cannot begin to consider optimum ethanol production and we cannot begin to change the economic viability of biofuels. Researchers have suggested and shown that by adding exogenous  $\beta$ -glucosidase isolated from *Aspergillus niger* one can increase the total cellulase activities of the cellulosome from *C. thermocellum* by 10-fold, in vitro.<sup>7</sup> However, the purification and then addition of exogenous  $\beta$ -glucosidase would not be cost-effective for large-scale biofuel production. The genetic modification of the thermophilic anaerobe *C. thermocellum*, has been limited due to the strict restriction endonuclease system, which is described as a Dam<sup>+</sup> phenotype.<sup>8,9</sup> Also, many Gram positive bacteria with their thick cell walls have been reported as difficult to electrotransform.<sup>10,11</sup> In this study, we have increased the copy number of  $\beta$ -glucosidase A gene (*bglA*) in *C. thermocellum* 27405 by electrotransforming it with a newly constructed shuttle vector

\*Correspondence to: Wensheng Qin; Email: wqin@lakeheadu.ca  
Submitted: 07/24/12; Revised: 08/23/12; Accepted: 08/23/12  
<http://dx.doi.org/10.4161/bioe.21951>



**Figure 1.** PCR amplification for conformation of ampicillin fragment (~500bp). Lanes: (1) 1 kb ladder, (2) +MCbglA total DNA, (3) plasmid pIBglA DNA (positive control), (4) WT total DNA (negative control).



**Figure 2.** The  $\beta$ -glucosidase activity of WT (■) and MCbglA (■) during log, late log and stationary phases of growth and expressed as the amount of *p*-nitrophenol ( $\mu$ M) released after 30 min incubation with 4  $\mu$ M PNPG.

(pIBglA) to ultimately increase cellulase activity and evaluate the overall effects on valuable end product formation such as ethanol.

## Results

**Construction of plasmid pIBglA.** Plasmid pIBglA was constructed and transformed into Dam+ *E. coli* JM109. Due to the enzymatic limitations observed during experiments using SacI, which according to the distributor notes has several inhibitors causing low cutting efficiency, transformation of ligation products resulted in 1 positive *bglA*-containing transformant from 68 ampicillin positive transformants. Plasmid extraction of pIBglA followed by 1% agarose gel electrophoresis confirmed an approximate size of 7 kb. Sequencing revealed the complete cloned sequence of *bglA* of approximately 1,800 bp.

**Verification of *C. thermocellum* electrotransformation with pIBglA.** The transformation of *C. thermocellum* with pIBglA was completed and selection was based on a combined resistance to appropriate concentrations of ampicillin and lincomycin in semi-solid agar. Electrocompetent *C. thermocellum* cells were transformed at a rate of  $5.17 \pm 3$  transformants  $\text{ml}^{-1}$  of *C. thermocellum* media agar supplemented with appropriate concentrations of ampicillin and lincomycin. Thus, strain *C. thermocellum*+MCbglA (+MCbglA) was created. No spontaneous ampicillin-lincomycin resistant *C. thermocellum* cells were detected after 6 d incubation. PCR was performed with primers designed for the ampicillin gene using total DNA from the ampicillin-lincomycin resistant clones as a template. As shown in Figure 1, the presence of the ampicillin gene resulted in a ~530 bp product (lane 2), confirmed by pIBglA plasmid DNA as a positive control (lane 3) and negative control (WT total DNA) (lane 4).

**$\beta$ -glucosidase activity of wild-type *C. thermocellum* and *C. thermocellum*+MCbglA.** The  $\beta$ -glucosidase activity, was evaluated for WT- and +MCbglA- *C. thermocellum* and was found to be an average 1.9-fold greater in +MCbglA directly correlating with an increase in expression of  $\beta$ -glucosidase from plasmid pIBglA. As seen in Figure 2, the  $\beta$ -glucosidase activity increased during late log and stationary phases of growth for +MCbglA and were found to be 2.3- and 1.6-fold greater than WT with a statistical significance of  $p < 0.05$  (Student's *t*-test). However, biological and technical replicates revealed there was no significant difference in  $\beta$ -glucosidase activity during early log phases of growth for WT and +MCbglA.

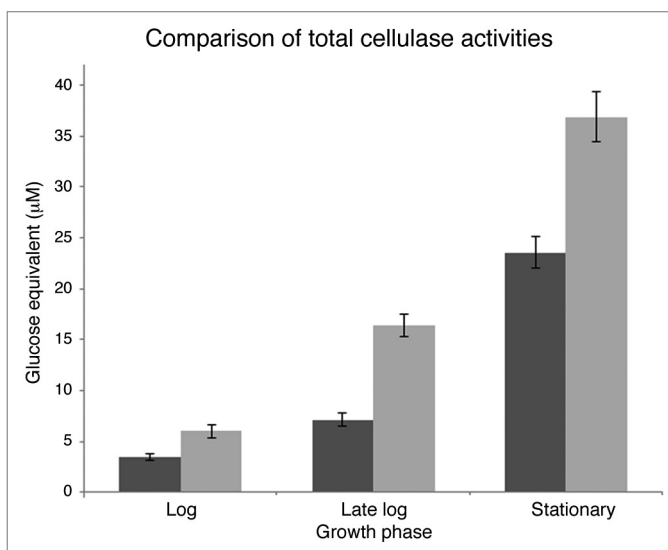
**Total cellulase activity of wild-type *C. thermocellum* and *C. thermocellum*+MCbglA.** The total cellulase activity, the amount of glucose equivalents released ( $\mu$ M) from 1% Avicel, of WT- and +MCbglA- *C. thermocellum* was evaluated to determine if an increase in expression of *bglA* could increase the overall cellulase activity during batch fermentation trials. The results in Figure 3 show that total cellulase activity of the +MCbglA was observed to be 1.7-, 2.3- and 1.6-fold significantly greater than the activity of WT during log, late log and stationary phases of growth, respectively,  $p < 0.05$  (Student's *t*-test). Thus, total cellulase activity was an average 1.9-fold greater for +MCbglA compared with the WT.

Analytical ethanol analysis for wild-type and +MCbglA *C. thermocellum* WT- and +MCbglA- *C. thermocellum* were grown in 1.5% cellobiose and 1% Avicel medium. Samples were

taken when the cultures reached log and stationary phases of growth and analyzed for ethanol concentration (Fig. 4). When +MC*bglA* reached stationary phase, the average ethanol concentration in the media was 2.5 g/l. This is slightly higher than what was observed for the WT *C. thermocellum* (1.9 g/l), but this difference was deemed not to be statistically significant. Likewise, +MC*bglA* produced more ethanol during log phase growth, but it was not significantly different from the WT. Ethanol production by +MC*bglA* was also investigated in Avicel medium, and it yielded similar results to the cellobiose trials. No significant differences were observed between the *bglA* copy number mutant and the WT in both the log and stationary phases. Little difference was observed between ethanol concentrations at log and stationary phases.

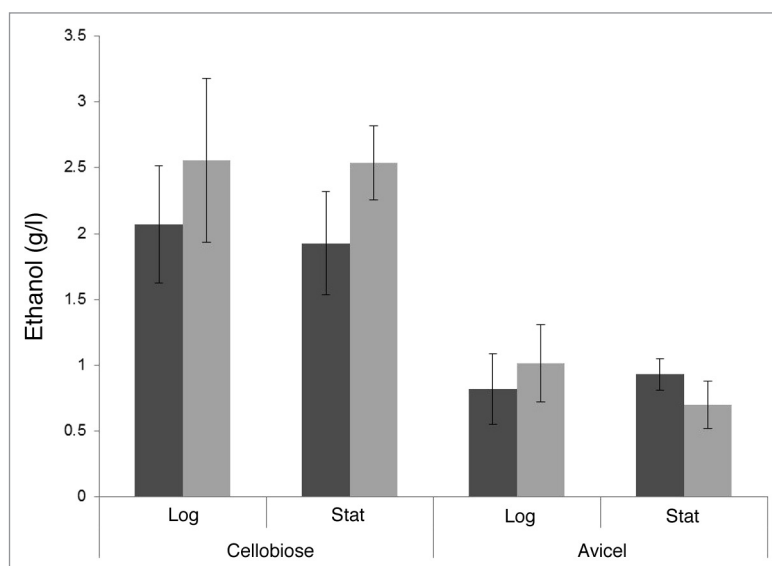
## Discussion

The opportunity to use *C. thermocellum* for CBP in the biorefining industry has exceptional potential if we can overcome some of the challenges facing its development. The majority of difficulty working with thermophilic anaerobic bacterial systems arises from the slow progress in genetic manipulation of these systems. Plasmid pIKM1 bearing a kanamycin cassette and with Gram negative and positive origins of replication was constructed by Mai et al. in 1997 and transformed into *Thermoanaerobacterium* sp strain JW/SL-YS485 a close thermophilic anaerobic strain to *C. thermocellum*.<sup>17</sup> Then, it was not until 2004, that Tyurin et al. developed an efficient protocol to transform *C. thermocellum* 27405 among two other *C. thermocellum* strains DSM 1313 and 4150 with plasmid pIKM1 using a uniquely designed electroporation system.<sup>14</sup> More recently in 2010, Lin et al. developed a minimally invasive ultrasound-based sonoporation method for simple and rapid transformation of thermophilic Gram positive anaerobes.<sup>18</sup> In doing so, they transformed *Thermoanaerobacterium* sp strain X514 with pIKM2 harboring a *C. thermocellum*  $\beta$ -1-4-glucanase gene, endoglucanase activity was observed in both electroporated and sonoporated X514 samples. Now for one of the first times reported, we expressed a functional gene ( $\beta$ -glucosidase A) from a Dam methylated plasmid pIB*glA* (constructed from pIKM1) in *C. thermocellum* 27405 using a modified electroporation protocol. In this research article, we strived to develop a *C. thermocellum* strain which can have greater total cellulase activity by reducing substrate specific end product inhibition. Thus, we proposed increasing the copy number of  $\beta$ -glucosidase. The *BglA* gene was chosen because it is fully sequenced and also because it's native to *C. thermocellum*. Thus, this gene is suitable for expression in its thermophilic host. Due to the current lack of confident recombinant systems for *C. thermocellum* and for a concern in disruption of vital genes we chose to use plasmid pIKM1 shuttle vector with low copy number to increase expression of *BglA* without overburdening the cell. Growth in ampicillin remained constant; however, the loss of ampicillin resistance when continuously subculture without antibiotics was



**Figure 3.** The total cellulase activity of WT (■) and MC*bglA* (■) during log, late log and stationary phases of growth and expressed in glucose equivalents ( $\mu$ M) released from 1% Avicel.

observed at approximately the 5th generation. One of the greatest limitations to using any whole microorganism for hydrolysis of cellulose and hemicellulose is the end product inhibition. Cellobiose is an inhibitor of cellulase activity in *C. thermocellum* and a previous report showed that the exogenous addition of  $\beta$ -glucosidase purified from *Aspergillus niger* could increase cellulase activity by 10-fold in *C. thermocellum*.<sup>7</sup> Moreover, in *Trichoderma reesei* transformants the heterologous expression of a  $\beta$ -glucosidase gene from *Penicillium decumbens* resulted in an average 30% increase in filter paper activity (representing total cellulase activity).<sup>19</sup> Therefore one may hypothesize that if there is an increase in copy number of  $\beta$ -glucosidase in *C. thermocellum*, there would also be an increase in  $\beta$ -glucosidase activity



**Figure 4.** The ethanol titers (g/l) of WT (■) and MC*bglA* (■) produced from batch fermentation trials on cellobiose and avicel containing mediums.

and this would ultimately increase total cellulase activity. In this study, the increase in copy number of *bglA* significantly increased both  $\beta$ -glucosidase activity as well as total cellulase activity during late log and stationary phases of growth by an average of 2.0-fold and 1.9-fold, respectively, for +MC*bglA* *C. thermocellum* over WT. Thus it appears the increase in  $\beta$ -glucosidase activity of *C. thermocellum* is also proportional to the observed increase in total cellulase activity. However, it was hypothesized here that the increase in total cellulase activity would also result in a likewise increase in ethanol production during batch fermentation trials, due to an increase in glucose catabolism. Nonetheless, there was no significant difference in ethanol production between WT- and +MC*bglA*- *C. thermocellum* suggesting that total cellulase activity is not directly proportional to fermentative metabolism of glucose under batch fermentation conditions. We suggest that this could be due to a metabolic overburden in +MC*bglA* from the presence of the shuttle vector pIB*bglA*. This could potentially decrease the resistance of +MC*bglA* to toxic end products such as ethanol, lactic and acetic acids. The toxicity of end products such as ethanol in the fermentation of glucose for ethanogenic microorganisms such as *C. thermocellum* has gained a lot of attention in research for biotechnological implications. Ethanol is known to inhibit glycolytic enzymes and cause damage to cell membranes, thus inhibiting cell growth.<sup>20,21</sup> From a commercial perspective titers of ethanol greater than 40 g/l are desired, for cost effective recovery.<sup>22</sup> Thus, researchers have found the need to develop greater ethanol tolerant *C. thermocellum* strains such as by adaptation to levels as high as 50–55 g/l.<sup>22,23</sup> However, to date, there remains a discrepancy whether increased ethanol tolerance can attribute to greater ethanol titers. The research presented here, also explored whether increased cellulase production could lend to an increase in ethanol. However, due to the lower levels of ethanol reported in this study, we suggest +MC*bglA* strain be produced in the future using recombinant DNA techniques to eliminate the stress of maintaining a plasmid.

Anaerobic catabolism is a challenging yet refined process in *C. thermocellum* where the modest availability of ATP needs to support growth, cellulase production and the uptake; a complex process which still requires exploration.<sup>24,25</sup> It has been shown that the uptake of oligosaccharides with the combined intracellular phosphorolytic cleavage of  $\beta$ -1,4-glucosidic bonds is bioenergetically favorable when *C. thermocellum* is specifically grown on cellulose.<sup>25</sup> Despite the lack of regeneration of ADP co-factors produced through the hydrolytic activity of BglA, a greater overall cellulase activity could be observed in +MC*bglA* compared with the WT due to a reduction in the cellulase end product inhibitor cellobiose. Additionally, the lack of increased ethanol production shown here further lends insights into the complex metabolism of glucose in *C. thermocellum*.

## Materials and Methods

**Media, strains and cultivation conditions.** The strain *Clostridium thermocellum* (ATCC 27405) was obtained from the American Type Culture Centre through Cedarlane in Canada. *C. thermocellum* cells were grown at 60°C in *Clostridium thermocellum*

Medium (ATCC media 1191). Either cellobiose or Avicel were included as the carbon source for appropriate experiments at a concentration of 0.5% and 1%, respectively.<sup>12,13</sup> The following antibiotics were used for all growth, experiments transformant to maintain selection: 100  $\mu$ g/ml ampicillin and 20  $\mu$ g/ml lincomycin (Sigma-Aldrich). All of the work in this study using *C. thermocellum* cells was done inside a Coy Anaerobic Chamber (Coy Laboratories) under 5% hydrogen, 95% nitrogen mixed atmosphere, except applying the electric potential to the cells, centrifugation of cells and genomic DNA or enzyme extraction. The other strain used in this study *Escherichia coli* JM109, was grown at 37°C in Luria Bertani broth or on Luria Burtani agar containing 100  $\mu$ g/ml of ampicillin for selection of transformants when appropriate.

**Cloning  $\beta$ -glucosidase A from *C. thermocellum*.** The genomic DNA of *C. thermocellum* was extracted from 3 ml of 48 h broth cultures using the Fungi/Yeast Genomic DNA Isolation Kit (Norgen Biotek Corporation) according to the instructions for Gram positive bacteria provided by the supplier. Two primers, BglIPFW and BglSRV (shown in Table 1), were used to amplify the complete sequence of *bglA* from *C. thermocellum* with promoter and terminator. The primers were designed to contain the restriction cut sites for PstI and SacI for BglIPFW and BglSRV, respectively, in addition to nucleotides complementary to *bglA*. The PCR reaction mixtures contained 10 ng of *C. thermocellum* genomic DNA, 10 pmol of both forward and reverse primers, 10 $\times$  Taq buffer with 500 mmol KCl, 25 mmol/l MgCl<sub>2</sub>, 0.2 mmol deoxynucleoside triphosphate, and 5 U *Pfu* DNA polymerase per 50  $\mu$ l reaction. The PCR program was as follows: primary denaturation 3 min at 95°C, followed by 35 amplification cycles consisting of denaturing at 95°C for 1 min, annealing for 1 min at 54°C, and extension at 72°C for 1 min, upon completion of 35 amplification cycles a final extension step was done at 72°C for 10 min. The resulting amplicon of approximately 1.3 kb was confirmed by sequencing on ABI 3730xl automatic sequencer (Eurofins MWG Operon). The complete *bglA* was confirmed by complementation and alignment of sequencing results using DNAMAN software. The *bglA* product was then digested with restriction enzymes PstI and SacI (Fermentas, Canada) by combining 5  $\mu$ l of *bglA* PCR product with 0.6  $\mu$ l of SacI and PstI and 2  $\mu$ l of 10 $\times$  Tango buffer, incubated for 3 h 37°C.

**Source and construction of plasmid pIKm1.** Plasmid pIKm1 was a gift from Lee Lynd (Dartmouth College, USA). The pIKm1 DNA was isolated from *E. coli* using Ultra Clean 6 Minute Mini Plasmid Kit (Mo Bio Laboratories) following the directions provided by the supplier. No sequence information was available for plasmid pIKm1 therefore we designed the primers KmFW and KmRV, (Table 1). The primers were designed within the kanamycin cassette gene to sequence the flanking multiple cloning sites. Restriction maps were produced from resulting sequences using DNAMAN software and cross referenced to the sequence of *bglA*. Two restriction endonucleases were chosen and used for digestion of pIKm1: PstI and SacI (Fermentas), restriction digest was performed by combining 0.8  $\mu$ g/ $\mu$ l of pIKm1 DNA with 6.3 U of SacI and 2  $\mu$ l of 10 $\times$  Tango Buffer (Fermentas), this mixture was then incubated at 37°C in a water bath for 1 h.



**Table 1.** Primers used in this study

DNA target	Forward 5'-3'	Reverse 5'-3'	Product (bp)
BglA	BglPFW-ACA GAG CTC AGC TCC ATT GTT GCT TAG C	BglSRV-AAT CTG CAG ACT GGT AAG TGA TTG CCG G	1,867
pIKM1	KmFWD- CTG GGA AGA AGA CAC TCC A	KmRV- TGG AGT GTC TTC TTC CCA G	N/A
Ampicillin	AmpFW- CGT TCA TCC ATA GTT GC	AmpRV- GCA CGA GTG GGT TAC ATC G	534

After 1 h time, 6.3 U of PstI was added and then the mixture was incubated for an additional 2 h at 37°C. Digestion resulted in two bands, one approximately 1.5 kb and the other approximately 5 kb. The 5 kb representing the remainder of the vector minus most of the kanamycin cassette was gel extracted using the NucleoSpin Extraction II kit (Clontech Laboratories,) following instructions provided by the distributor. Previously cloned, digested and cleaned *bglA* were ligated to the approximate 5 kb vector using T4 DNA ligase (Fermentas). The ligation reaction mixture contained 2 µl of ligation buffer, 5 U T4 DNA ligase, 15 µl of 80 ng µl *bglA* DNA and 2 µl of 100 ng µl of digested pIKM1 DNA, and allowed to incubate at ambient temperature for 3 h. After ligation, the resulting DNA was transformed to *E. coli* JM109 using 40 µl of prepared electrocompetent cells premixed with 1 µl of ligation reaction in a 0.4 cm cuvette at a capacitance of 25 µF using the Bio- Rad Gene Pulser apparatus (Bio-Rad Laboratories). Transformants were screened using colony PCR for the presence of two genes: *bglA* and ampicillin (*amp*) (Table 1).

**Electrotransformation of *C. thermocellum* with pIBglA.** Electrocompetent *C. thermocellum* cells were prepared precisely following the method described by Tyurin et al. in 2004, however no isoniacin was used.<sup>14</sup> Final cell suspension was approximately  $9 \times 10^{10}$  cells/ml and 40 µl aliquots were divided into 0.4 cm gap electroporation cuvettes and chilled on ice for 5 min. One microlitre of ~2 µg of pIBglA DNA extract was premixed under anaerobic conditions with the chilled 40 µl cells. The cuvettes with cell + DNA on ice were removed from the anaerobic chamber 120 and immediately place under a constant stream of N<sub>2</sub> where the Bio-Rad Gene Pulser apparatus was used to electroporate the cells at a capacitance of 25 µF. Still under N<sub>2</sub>, the cells were then immediately removed from the cuvette with a 1 ml syringe and injected through the rubber stopper of hungate tubes (Bellco Glass) in prewarmed (55°C) *C. thermocellum* media supplemented with 0.5% (w/v) cellobiose and 0.75% (w/v) agar and 100 µg/ml ampicillin and 20 µg/ml lincomycin.

**β-glucosidase activity of wild-type *C. thermocellum* and *C. thermocellum*+MC*bglA*.** The β-glucosidase activity of wild-type- (WT-) *C. thermocellum* and the transformant containing multiple copies of *bglA* (MC*bglA*-*C. thermocellum*) was assayed by measuring the increase of absorbance at 400 nm via the release of *p*-nitrophenol from *p*-nitrophenyl-β-D-glucopyranoside (PNPG).<sup>15</sup> Briefly, WT- and MC*bglA*- *C. thermocellum* were pre-cultured for 48 h in 6 ml of *Clostridium* broth with 1% (w/v) cellobiose as the sole carbon source (n = 3). Then 200 µl of each culture were subsequently inoculated in triplicate to 40 ml of the same broth. Growth was monitored over 48 h during batch fermentation and 3 ml of samples were collected for each strain

at early exponential phase (0.25 O.D.600 nm), late exponential phase (0.5 O.D.600 nm) and stationary phase (0.7 O.D.600 nm) in triplicate for enzyme analysis. To extract total cellular β-glucosidase, cells were harvested at 17,000 g for 1 min; then washed twice with chilled 100 mM PBS (pH 7.0) before final resuspension in 1 ml of PBS. Microbeads were filled to 0.5 µl mark of the 1.5 ml microcentrifuge tubes then samples were vortexed at full speed for 5 min, then chilled in an ice bath for 5 min; this procedure was repeated 2 more times for a total of 15 min vortexing. Following, the samples were centrifuged at 17,000 g for 1 min. In a 96 well microtiter plate, 50 µl of 100 mM PBS (pH 7.0) containing 4 mM PNPG was loaded per well, plus the addition of 50 µl of enzyme extract for each strain and each growth phase in triplicate. The microtiter plate was then incubated at 55°C for 30 min. Thereafter, the reaction was stopped by adding 100 µl of chilled 1M Na<sub>2</sub>CO<sub>3</sub>, followed with 10 min incubation at 4°C. The absorbance was measured on a Bio-Rad Laboratories xMark spectrophotometer at 400 nm. The β-glucosidase activity was defined as the amount of *p*-nitrophenol (PNP) released per 30 min incubation.<sup>15</sup>

**Total cellulase activity of wild-type *C. thermocellum* and *C. thermocellum*+MC*bglA*.** Total cellulase activity was defined as the amount of glucose and cellobiose released from 1% Avicel and expressed in glucose equivalents (µM). Wild-type *C. thermocellum* (WT) and *C. thermocellum*+MC*bglA* (+MC*bglA*) were cultured for 48 h in 6 ml of *C. thermocellum* media supplemented with 1% Avicel (w/v) as the sole carbon source (n = 3), then 200 µl of each strain was subsequently transferred in triplicate to a fresh new 40 ml of the same media for batch fermentation. Samples were collected in 1.5 ml aliquots from each vial to determine total cellulase activity during exponential (0.25 O.D.600 nm), late exponential (0.5 O.D.600 nm) and stationary (0.7 O.D.600 nm) phases of growth. A microplate assay using the di-nitrosalicylic acid (DNS) method to measure reducing sugars, modified from Xiao et al.<sup>16</sup> was used. Briefly, 60 µl of supernatant from each strain during each growth phase was added to a well in triplicate, a 120 µl of DNS was also added to each well. The plate was then incubated at 95°C for 5 min. Finally, 36 µl was removed from each well and added to 160 µl of ddH<sub>2</sub>O, mixed, and then the absorbance was read on a Bio-Rad xMark spectrophotometer at 545 nm.

**Analytical methods for ethanol.** Broth samples for ethanol analysis were collected from batch cultures used to measure enzyme activities from trials of WT- and +MC*bglA*- *C. thermocellum* on both cellobiose and Avicel containing media previously mentioned, by aliquoting 1.5 ml of culture supernatant into 1.5 ml Eppendorf tubes. All samples were stored at -20°C until analysis. The samples were then analyzed using an Agilent 6850 Gas Chromatograph fitted with a Carbowax column (30 min ×

0.32 mm, film thickness 0.25  $\mu\text{m}$ ) and flame ionization detector. In preparation for analysis, the samples were thawed at room temperature, centrifuged at 17,000 g for 5 min and 1 ml of each sample was transferred to a fresh 1.5 ml Eppendorf tube. Prior to injection, each sample was spiked with 100  $\mu\text{l}$  *n*-butanol, which acted as an internal standard. Injection volume was 1  $\mu\text{l}$  and the inlet was run splitless. Nitrogen was used as a carrier gas with a flow rate of 1.5 ml/min and the run time was 5 min/sample. The injection port temperature was set at 250°C, the column temperature was isothermally set at 75°C, and the detector temperature was 300°C. Standards were prepared the day of analysis using anhydrous ethanol and they were also spiked with 100  $\mu\text{l}$  *n*-butanol per 1 ml standard.

## Conclusion

Our work clearly demonstrates that by increasing expression of native BglA there will be a nearly proportion increase in total cellulase activity of *C. thermocellum* leading to the production of a more industrially applicable *C. thermocellum*. The hydrolysis step is a rate limiting step in the production of biofuels; however, more work on +MCbglA strain is required to increase ethanol titer for CBP potential. We will continue to test the following hypothesis: adapted increased tolerance to toxic end products of +MCbglA will lead to increased ethanol production, in hopes to lend more insight into the application of *C. thermocellum* in biofuel production.

## Disclosure of Potential Conflicts of Interest

No potential conflicts of interest were disclosed.

## References

- Wyman CE, Dale BE, Elander RT, Holtzapple M, Ladisch MR, Lee YY. Coordinated development of leading biomass pretreatment technologies. *Bioresour Technol* 2005; 96:1959-66; PMID:16112483; <http://dx.doi.org/10.1016/j.biortech.2005.01.010>.
- Maki M, Leung KT, Qin W. The prospects of cellulase-producing bacteria for the bioconversion of lignocellulosic biomass. *Int J Biol Sci* 2009; 5:500-16; PMID:19680472; <http://dx.doi.org/10.7150/ijbs.5.500>.
- Demain AL, Newcomb M, Wu JHD. Cellulase, clostridia, and ethanol. *Microbiol Mol Biol Rev* 2005; 69:124-54; PMID:15755956; <http://dx.doi.org/10.1128/MMBR.69.1.124-154.2005>.
- Ng TK, Ben-Bassat A, Zeikus JG. Ethanol Production by Thermophilic Bacteria: Fermentation of Cellulosic Substrates by Cocultures of *Clostridium thermocellum* and *Clostridium thermohydrosulfuricum*. *Appl Environ Microbiol* 1981; 41:1337-43; PMID:16345787.
- Mori Y. Characterization of a Symbiotic Coculture of *Clostridium thermohydrosulfuricum* YM3 and *Clostridium thermocellum* YM4. *Appl Environ Microbiol* 1990; 56:37-42; PMID:16348106.
- Petitdémange E, Tchunden T, Valles S, Pirson H, Raval G, Gay R. Effect of carbon sources on cellulase production by *clostridium cellulolyticum*. *Biomass Bioenerg* 1996; 3:393-402.
- Lamed R, Kenig R, Morgenstern E, Calzada JF, De Mico F, Bayer EA. Efficient cellulose solubilisation by a combined cellulosome- $\beta$ -glucosidase system. *Appl Biochem Biotechnol* 1990; 27:173-83; <http://dx.doi.org/10.1007/BF02921525>.
- Klapatch TR, Demain AL, Lynd LR. Restriction endonuclease activity in *Clostridium thermocellum* and *Clostridium thermosaccharolyticum*. *Appl Microbiol Biotechnol* 1996; 45:127-31; PMID:11536742; <http://dx.doi.org/10.1007/s002530050659>.
- Ozkan M, Desai SG, Zhang Y, Stevenson DM, Beane J, White EA, et al. Characterization of 13 newly isolated strains of anaerobic, cellulolytic, thermophilic bacteria. *J Ind Microbiol Biotechnol* 2001; 27:275-80; PMID:11781801; <http://dx.doi.org/10.1038/sj.jim.7000082>.
- Dunny GM, Lee LN, LeBlanc DJ. Improved electroporation and cloning vector system for gram-positive bacteria. *Appl Environ Microbiol* 1991; 57:1194-201; PMID:1905518.
- Löfblom J, Kronqvist N, Uhlén M, Ståhl S, Wernérus H. Optimization of electroporation-mediated transformation: *Staphylococcus carnosus* as model organism. *J Appl Microbiol* 2007; 102:736-47; PMID:17309623; <http://dx.doi.org/10.1111/j.1365-2672.2006.03127.x>.
- Brener D, Johnson BF. Relationship Between Substrate Concentration and Fermentation Product Ratios in *Clostridium thermocellum* Cultures. *Appl Environ Microbiol* 1984; 47:1126-9; PMID:16346540.
- Bernardez TD, Lyford KA, Lynd LR. Kinetics of the extracellular cellulases of *Clostridium thermocellum* acting on pretreated mixed hardwood and Avicel. *Appl Microbiol Biotechnol* 1994; 41:620-5; <http://dx.doi.org/10.1007/BF00178500>.
- Tyurin MV, Desai SG, Lynd LR. Electrotransformation of *Clostridium thermocellum*. *Appl Environ Microbiol* 2004; 70:883-90; PMID:14766568; <http://dx.doi.org/10.1128/AEM.70.2.883-890.2004>.
- Hang YD, Woodams EE. Apple pomace: A potential substrate for production of  $\beta$ -glucosidase by *Aspergillus foetidus*. *Food Sci Technol* 1994; 27:587-9.
- Xiao Z, Storms R, Tsang A. Microplate-based filter paper assay to measure total cellulase activity. *Biotechnol Bioeng* 2004; 88:832-7; PMID:15459905; <http://dx.doi.org/10.1002/bit.20286>.
- Mai V, Lorenz WW, Wiegel J. Transformation of *Thermoanaerobacterium* sp. strain JW/SL-YS485 with plasmid pK1M1 conferring kanamycin resistance. *FEMS Microbiol Lett* 1997; 148:163-7; <http://dx.doi.org/10.1111/j.1574-6968.1997.tb10283.x>.
- Lin L, Song H, Ji Y, He Z, Pu Y, Zhou J, et al. Ultrasound-mediated DNA transformation in thermophilic gram-positive anaerobes. *PLoS One* 2010; 5:e12582; PMID:20838444; <http://dx.doi.org/10.1371/journal.pone.0012582>.
- Ma L, Zhang J, Zou G, Wang C, Zhou Z. Improvement of cellulase activity in *Trichoderma reesei* by heterologous expression of a beta-glucosidase gene from *Penicillium decumbens*. *Enzyme Microb Technol* 2011; 49:366-71; PMID:22112562; <http://dx.doi.org/10.1016/j.enzmictec.2011.06.013>.
- Ingram LO. Ethanol tolerance in bacteria. *Crit Rev Biotechnol* 1990; 9:305-19; PMID:2178781; <http://dx.doi.org/10.3109/07388558909036741>.
- Jones RP. Biological principles for the effects of ethanol. *Enzyme Microb Technol* 1989; 11:130-51; [http://dx.doi.org/10.1016/0141-0229\(89\)90073-2](http://dx.doi.org/10.1016/0141-0229(89)90073-2).
- Shao X, Raman B, Zhu M, Mielenz JR, Brown SD, Guss AM, et al. Mutant selection and phenotypic and genetic characterization of ethanol-tolerant strains of *Clostridium thermocellum*. *Appl Microbiol Biotechnol* 2011; 92:641-52; PMID:21874277; <http://dx.doi.org/10.1007/s00253-011-3492-z>.
- Williams TI, Combs JC, Lynn BC, Strobel HJ. Proteomic profile changes in membranes of ethanol-tolerant *Clostridium thermocellum*. *Appl Microbiol Biotechnol* 2007; 74:422-32; PMID:17124583; <http://dx.doi.org/10.1007/s00253-006-0689-7>.
- Strobel HJ, Caldwell FC, Dawson KA. Carbohydrate transport by the anaerobic thermophile *Clostridium thermocellum* LQRI. *Appl Environ Microbiol* 1995; 61:4012-5; PMID:16535164.
- Zhang YH, Lynd LR. Cellulose utilization by *Clostridium thermocellum*: bioenergetics and hydrolysis product assimilation. *Proc Natl Acad Sci U S A* 2005; 102:7321-5; PMID:15883376; <http://dx.doi.org/10.1073/pnas.0408734102>.