



Online, real-time detection of volatile emissions from plant tissue

Frans J. M. Harren* and Simona M. Cristescu

Life Science Trace Gas Facility, IMM, Radboud University, Heyendaalseweg 135, 6525 AJ Nijmegen, The Netherlands

Received: 20 August 2012; **Revised:** 5 December 2012; **Accepted:** 4 January 2013; **Published:** 9 January 2013

Citation details: Harren FJM, Cristescu SM. 2013. Online, real-time detection of volatile emissions from plant tissue. *AoB PLANTS* 5: plt003; doi:10.1093/aobpla/plt003

Abstract

Trace gas monitoring plays an important role in many areas of life sciences ranging from agrotechnology, microbiology, molecular biology, physiology, and phytopathology. In plants, many processes can be followed by their low-concentration gas emission, for compounds such as ethylene, nitric oxide, ethanol or other volatile organic compounds (VOCs). For this, numerous gas-sensing devices are currently available based on various methods. Among them are the online trace gas detection methods; these have attracted much interest in recent years. Laser-based infrared spectroscopy and proton transfer reaction mass spectrometry are the two most widely used methods, thanks to their high sensitivity at the single part per billion level and their response time of seconds. This paper starts with a short description of each method and presents performances within a wide variety of biological applications. Using these methods, the dynamics of trace gases for ethylene, nitric oxide and other VOCs released by plants under different conditions are recorded and analysed under natural conditions. In this way many hypotheses can be tested, revealing the role of the key elements in signalling and action mechanisms in plants.

Keywords: Ethylene; laser-based detection; nitric oxide; plant volatiles; proton transfer reaction mass spectrometry real-time emission; trace gas detection; volatile organic compounds.

Introduction

Reliable monitoring of small quantities of trace gases in complicated gas mixtures is of great importance for all research areas of life sciences. Atmospheric chemists are interested in the origin of air pollution and its consequences, such as the global greenhouse warming or the depletion of the ozone layer. Medical researchers are searching for volatile exhaled biomarkers for non-invasive detection and treatment monitoring of various diseases. Biologists would like to know the physiological status of plant material, and how it is reacting in biotic and abiotic stress situations, such as drought, flooding, high/low temperatures, herbivore attack, fungal infestation, etc. Quality assurance in food production (e.g.

transport and storage) may improve its quality at reduced costs and ensure the safety of the consumers. In most of these situations, *in vivo*, online and non-invasive monitoring of trace gases is desired. Nowadays, laser-based and mass spectrometry-based methods can routinely detect trace gas quantities down to 1 part per billion by volume (ppbv; $1:10^9$) or lower at a timescale of seconds (Fall *et al.* 1999; Kosterev and Tittel 2002; Brown 2003; Tittel *et al.* 2003; Tholl *et al.* 2006; Cristescu *et al.* 2008; Loreto and Schnitzler 2010).

To study trace emissions of molecules produced by biological samples, highly sensitive detectors are required, owing to the sometimes very low emission rate or small amount of plant material available. A fast

* Corresponding author's e-mail address: F.Harren@science.ru.nl

response time is often required for accurate monitoring of the dynamics of the physiological process. The type and number of molecules emitted vary as much as their sources. Molecules from a wide range of volatile organic compounds (VOCs) can be released: alkanes, alkenes, alcohols, aldehydes, ketones, acids, esters, aromatics, halogenated hydrocarbons, sulfur- and nitrogen-containing compounds. Vapours can also be measured from the liquid phase; the necessary condition for the emission in gas phase is that at a specific temperature the vapour pressure should be sufficiently high. This is almost always the case, since the ppmv/ppbv vapour pressure level of the majority of gases is far below 0 °C (Lide 1993).

Many different methods have been developed for trace gas detection, ranging from electronic noses, infrared spectrometers, laser-based detectors to mass spectrometers, whether or not combined with gas chromatography. Some of the trace gas detectors are specialized on a specific molecule, resulting in highly sensitive detectors; others have a much more analytical approach, measuring many different compounds simultaneously. Here, we will consider the two most widely used approaches for sensitive online trace gas detection: laser-based infrared spectroscopy and mass spectrometry. A short description of laser-based spectroscopic methods and sensitive mass spectrometry is given, with emphasis on why these approaches are so selective and sensitive for the detection of trace gases. This brief technological approach is followed by a number of examples focused on specific applications and molecules related to plant physiological processes, such as ethylene, ethane, nitric oxide (NO), ethanol, acetaldehyde, etc.

Laser-based trace gas detection

A gaseous molecule that absorbs light/laser radiation is excited to a higher quantum state. This absorption causes a decrease in laser light intensity, which can be directly quantified via absorption spectroscopy (Werle 1998). More indirect methods are observing the depopulation of the excited state via fluorescence (i.e. fluorescence spectroscopy) or by collisional de-excitation. The latter gives rise to a temperature and pressure change in the gas that can be detected with a sensitive microphone (photoacoustic spectroscopy) (Fig. 1) (Miklos *et al.* 2001; Harren *et al.* 2012).

In general, laser spectroscopy is very specific; a molecular transition (and thus absorption frequencies of the light) can be determined with very high accuracy. Each molecular gas has thousands of specific absorption lines. For this reason, the infrared wavelength region

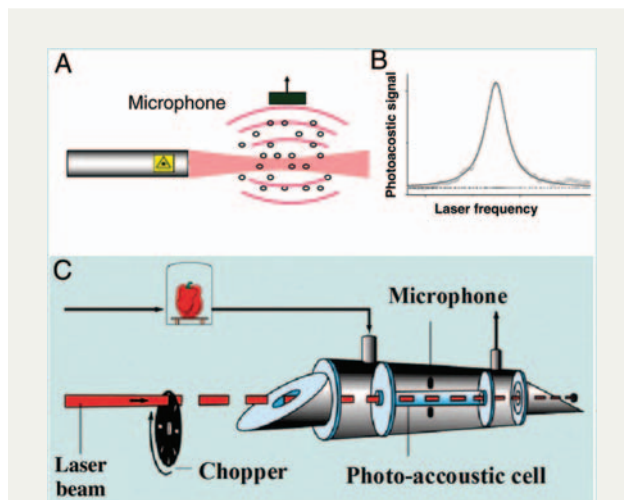


Fig. 1 Laser-based photoacoustic trace gas detection. (A) Generation of photoacoustic sound, (B) laser frequency scan over the absorption line of a molecule and (C) schematic view of an experimental set-up. When a gas molecule absorbs laser radiation, the molecule is excited to a higher quantum state. De-excitation of that level under atmospheric pressure by collisions causes the release of energy in the form of heat. In a closed volume this causes a pressure increase. When the light beam is modulated with a chopper at an audio frequency (C, e.g. 1 kHz), a pressure wave will be generated: sound will appear at a frequency of 1 kHz. The strength of the sound will be equal to the absorption strength (gas concentration), while the laser frequency gives the selectivity to distinguish the gas in a mixture of gases.

between 2 and 20 μm is called the fingerprint region; the molecule gives a unique, specific absorption pattern that can be clearly discriminated from other gases. On the other hand, if there is a complex mixture of gases, care has to be taken to choose a proper absorption line for the determination of the concentration, where there should be low or no interference with absorption lines of other gases (Rothman *et al.* 2009).

Next to its specificity, laser spectroscopy can achieve a very high sensitivity. Within absorption spectroscopy this is done by increasing the path length of the light through the gas. For this, mostly an absorption cell is used with high reflective mirrors in a multipass arrangement, combined with advanced modulation techniques. This type of absorption spectroscopy has evolved in a wide range of methods such as cavity enhanced spectroscopy, cavity ring down spectroscopy, wavelength modulation spectroscopy, etc.; an overview of these spectroscopic methods can be found elsewhere (Berden *et al.* 2000; Brown 2003). Alternatively, photoacoustic spectroscopy does not need a long absorption path length, due to its intrinsic high sensitivity with high laser power

(Bijnen *et al.* 1996; Harren *et al.* 2012). Moreover, it is a simple technique that can be used in compact and robust schemes for online trace gas detection (Cristescu *et al.* 2008).

To quantify gas concentrations, it is important to calibrate the sensor with a known gas mixture and to show the linearity of the detector signal with the concentration of the probed gas over orders of magnitude. As an example, the linear response of the photoacoustic sensor for low detection limits of ethane is presented in Fig. 2 (van Herpen *et al.* 2002).

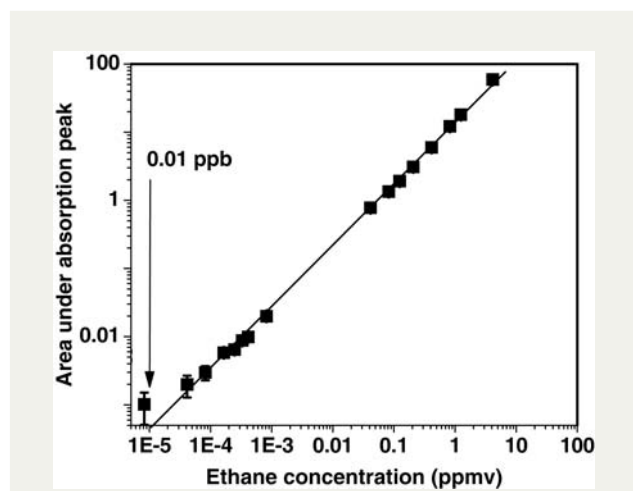


Fig. 2 Linearity of the laser-based photoacoustic system. The measured signal is displayed vs. the applied gas concentration over >6 orders of magnitude for ethane (van Herpen *et al.* 2002).

Proton transfer reaction mass spectrometry

Using mass spectrometry, electron ionization typically results in extensive fragmentation of the molecule under investigation, which can be an advantage for identifying single compounds. However, the interpretation of the mass spectra (i.e. the confirmation of molecular weight) can be difficult when only traces of a gas are available in complex gas mixtures, such as air. Fragmentation should then be avoided. One way is via soft chemical ionization; examples of this are ion mobility mass spectrometry (Kanu *et al.* 2008), selective ion flow tube mass spectrometry (Smith and Spanel 2005) or proton transfer reaction mass spectrometry (PTR-MS) (Lindinger *et al.* 1998; de Gouw *et al.* 2003).

Within PTR-MS, molecules typically form a protonated molecular ion $[M + H]^+$, with M being the molecular weight of the parent molecule. Next to its low fragmentation rate, PTR-MS has the advantage of being very efficient, resulting in very good performance for online trace gas detection. The strength of this technique is detection of trace gases from various chemical groups in the order of seconds at (sub)part per billion levels. In comparison, when using gas chromatographic methods the analytic capabilities are strongly enhanced, but the time response is increased to 20–30 min. Therefore, PTR-MS is best used with online, real-time experiments when a fast time response is expected, or when a number of samples are monitored in parallel.

The working principles of PTR-MS have been given in detail elsewhere (Lindinger *et al.* 1998; de Gouw *et al.* 2003; Boamfa *et al.* 2004; Blake *et al.* 2009) (see Fig. 3). The instrument consists of four parts: an ion

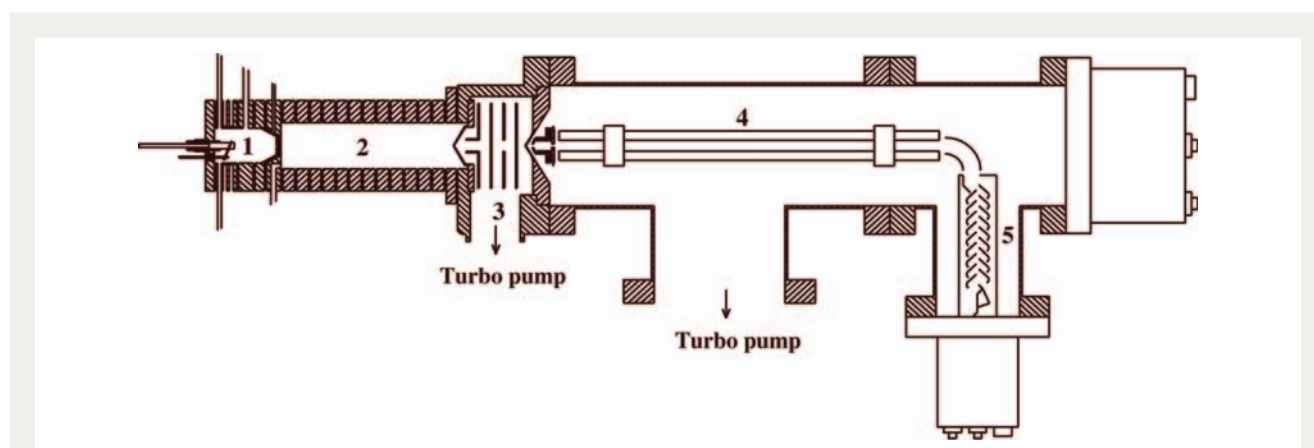


Fig. 3 Schematic view of the PTR-MS instrument. (1) The discharge source for the production of H_3O^+ ions; (2) the drift tube: the trace gases from the biological sample enter here and a proton transfer takes place with the ions from chamber (1); (3) the buffer chamber; (4) the mass spectrometer with quadrupole; and (5) the secondary electron multiplier.

source where H_3O^+ ions are produced, a drift tube section, a separately pumped transition chamber, and an ion detection section containing a quadrupole mass spectrometer and a secondary electron multiplier. In the drift tube, the trace gases from the sample gas are ionized by proton-transfer reactions with H_3O^+ ions: $\text{H}_3\text{O}^+ + \text{R} \rightarrow \text{RH}^+ + \text{H}_2\text{O}$. This reaction only takes place if the proton affinity (PA) of the trace compound R is higher than that of water (166.5 kcal/mol = 7.16 eV per molecule). A major advantage of using H_3O^+ as the reagent ion is that the PA of water is higher than the PA of the normal constituents of air: N_2 , O_2 , CO_2 , CH_4 , CO , NO and argon, and most of the typical organic compounds are ionized by the proton-transfer reaction, since their PA are in the range between 7 and 9 eV. The reaction rate can be measured or calculated and is known for many of the proton-transfer reactions of interest (Hunter and Lias 1998). Since the excess energy of the reaction is low, it results in only one or two characteristic ions per neutral molecule. For some molecular groups, dissociation can occur to form one or two fragments of significant intensity (e.g. alcohols can split off a water molecule). Owing to this soft ionization the matrix of signals is less complicated than with other mass spectrometric techniques. However, a drawback is that the compounds cannot always be identified uniquely, as each detected mass can sometimes be associated with more than one compound or compound fragment.

Detection of the plant hormone ethylene

One of the first and most successful applications of laser-based trace gas detection in biology is detection of ethylene (C_2H_4). Ethylene is a plant hormone that plays an important role in the regulation of many environmentally and developmentally induced processes, such as stress resistance, germination, ripening, senescence and abscission (Yang and Hoffman 1984). Ethylene production can also be induced by a variety of external factors such as mechanical wounding, environmental stresses and interaction with various micro-organisms. All tissue types and probably all cells of higher plants produce and liberate ethylene (Bleecker and Kende 2000). Many lower plants such as liverworts, mosses, ferns, lycopods and horse tails also are producers of ethylene, although the biosynthetic route seems to be different (Osborne et al. 1996). Ethylene is biosynthesized from the amino acid methionine to S-adenosyl-L-methionine (SAM) by the enzyme methionine adenosyltransferase. S-adenosyl-L-methionine is then converted into 1-aminocyclopropane-1-carboxylic acid (ACC) by the enzyme ACC synthase (ACS) (Yang and Hoffman 1984). The activity of ACS determines the

rate of ethylene production, and therefore regulation of this enzyme is key for ethylene biosynthesis. The final step to ethylene requires oxygen and involves the action of the enzyme ACC oxidase. Environmental stresses (physical, chemical and biological) and hormonal signals, such as auxin, cytokinin and even ethylene itself, stimulate the synthesis of the ACC synthase, thereby providing a means for autoregulation of its production (Ecker 1995).

With laser-based photoacoustic spectroscopy, ethylene can be detected with high sensitivity, high speed and very good selectivity. The use of this laser-based detector in combination with a flow-through system is proven to be unbeatable in sensitivity and time response in comparison with traditional methods such as gas chromatography, which is currently most widely used (Woltering et al. 1988; Bijnen et al. 1996; Cristescu et al. 2008). Briefly, traces of ethylene released by various biological samples absorb laser radiation inside the photoacoustic cell. The ethylene concentration is calculated from a comparison of the photoacoustic signals on various laser emission frequencies (at which ethylene has different absorption strengths). The laser-based instrument allows detection of ethylene emission in a continuous-flow system down to 0.01 ppbv over 90 s (Bijnen et al. 1996). In recent years, the laser-based ethylene detection system has been used within the Life Science Trace Gas Facility (www.ru.nl/tracegasfacility) for online measurement of ethylene in various dynamic processes in plants and micro-organisms.

One of the first and most appealing applications is detection of ethylene emission from flowers during their development, pollination and senescence. Owing to their low mass (~1 g) and sensitivity to ethylene they emit only small amounts of ethylene (nL h^{-1}). The ethylene emission could be observed at a very early stage, as was shown with orchid (*Cymbidium* cv. Mary Pinchess 'Del Rey') flowers after emasculation (removal of the pollinia plus anther cap) (Woltering et al. 1988). Within 3 h, an increase in ethylene emission could be observed, well before colouration of the labellum (after 8 h) or wilting of the petals and sepals (45 h). In a later study, it was shown that desiccation of the rostellum is responsible for post-emasculation phenomena in orchid flowers (Woltering and Harren 1989b). Studies on early changes in ethylene production during senescence of other orchid, carnation and petunia flowers followed (Woltering and Harren 1989a; Woltering et al. 1993) and in a later study pollination and stigma wounding were compared in petunia flowers (Woltering et al. 1997). In flowers of *Nicotiana tabacum* L., pollination induces a transient increase in ethylene production by the pistil (De Martinis et al. 2002). The characteristic ethylene

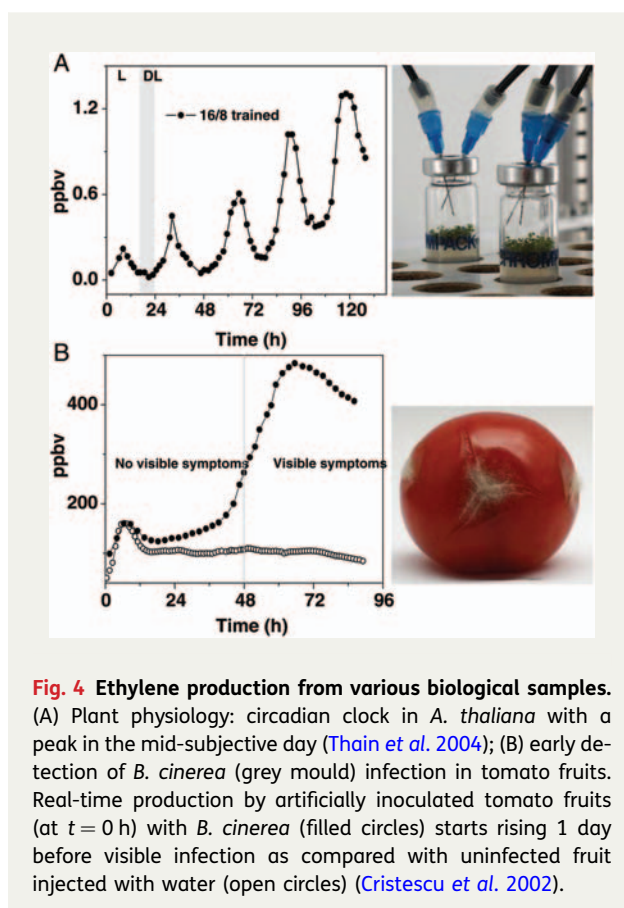
emission dynamics correspond to the pollen-tube journey into the pistil: penetration into the stigma, growth through the style, entry into the ovary and fertilization; it was shown that ethylene is synthesized *de novo* in the pistil.

Senescence of floral organs can be broadly divided into two groups: those that exhibit sensitivity to exogenous ethylene and those that do not (Wagstaff *et al.* 2005). Endogenous ethylene production by the former group is via a well-characterized biochemical pathway and is due either to developmental or pollination-induced senescence. Flowers from the ethylene-insensitive group do not appear to produce endogenous ethylene, or respond to exogenous ethylene treatments. From this group the role of ethylene in the senescence and abscission of *Alstroemeria peruviana* cv. Rebecca and cv. Samora tepals was investigated (Wagstaff *et al.* 2005). Results indicate that *Alstroemeria* is clearly sensitive to extremely small concentrations of endogenous and exogenous ethylene, although sensitivity develops late in the life of this flower.

Other processes that have been monitored online are seed germination (Gianinetti *et al.* 2007), fruit ripening (Iannetta *et al.* 2006), circadian rhythm in plants (Fig. 4A) (Thain *et al.* 2004), plant–pathogen interaction (Fig. 4B) (Cristescu *et al.* 2002; Montero *et al.* 2003), plant response to insect egg deposition (Schroder *et al.* 2007), interaction with other plant hormones (Vandenbussche *et al.* 2003a, b; Clarke *et al.* 2009; Roeder *et al.* 2009), dehydration and drought (Leprince *et al.* 2000; Balota *et al.* 2004), flooding (Voeselek *et al.* 1990, 1993) and programmed cell death (Yakimova *et al.* 2006). Based on this technology, a simple, robust and easy to maintain ethylene detector has been developed (Sensor Sense BV, Nijmegen, The Netherlands), and a number of the above-described studies have been performed with this commercial device. It achieves a noise equivalent minimum detection limit of 0.07 ppbv within a 5-s observation time (De Gouw *et al.* 2009).

Detection of methane isotope emission from plants

The detection of trace gases using laser-based detectors depends strongly on the overlap of the available wavelength region from the laser and the wavelength of the molecular absorption line. For the detection of methane, the 3- μm infrared wavelength region is the most favourable (Rothman *et al.* 2009). Recently, optical parametric oscillators (OPOs) were developed for this wavelength region to detect trace gases using photoacoustic spectroscopy (Ngai *et al.* 2006, 2007). An excellent detection limit of 0.01 ppbv for ethane



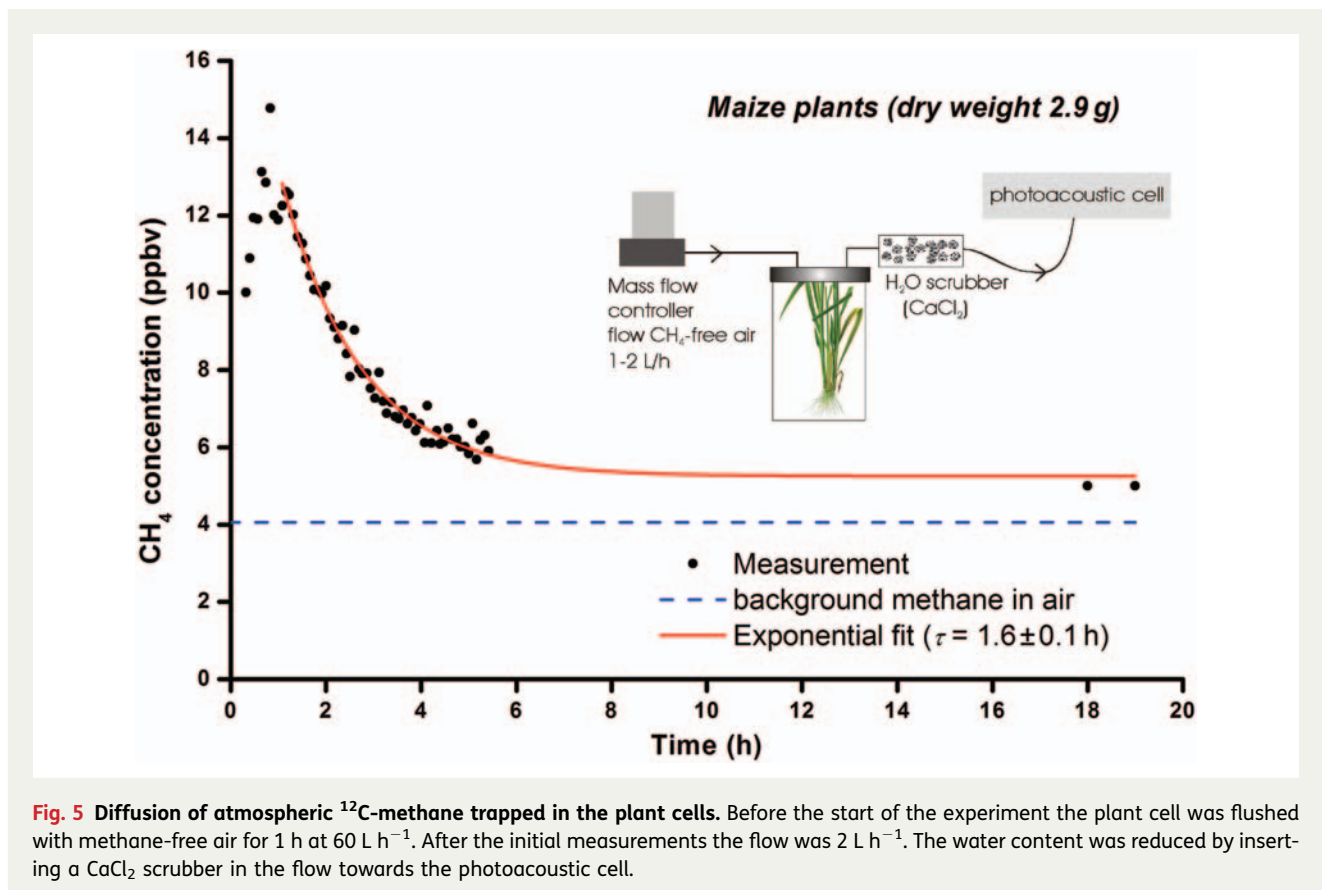
could be obtained in 40 s (van Herpen *et al.* 2002). In addition, this OPO system was used to monitor $^{12}\text{CH}_4$ and $^{13}\text{CH}_4$ emissions by plants, for which the system has a detection limit of 0.1 ppbv for both isotopes. The study of methane emissions from plants was provoked by an earlier study published by Keppler *et al.* (2006) which found that terrestrial plants can produce a large amount of methane in aerobic conditions. In collaboration with other groups, we re-examined this finding using an independent test (Dueck *et al.* 2007). For this study, ^{13}C -labelled plants grown under controlled conditions in an Experimental Soil Plant Atmosphere System (ESPAS; IsoLife BV, Wageningen, The Netherlands) (Gorissen *et al.* 1996) were used. When investigating possible methane emission, it is preferable to detect $^{13}\text{CH}_4$ from plants, since the natural atmospheric background concentration of $^{13}\text{CH}_4$ is only 20 ppbv, compared with a high level of 1.7 ppmv for $^{12}\text{CH}_4$. The ESPAS is a unique, hermetically sealed, plant growth chamber (3.5 m^3), specifically designed for growing full ^{13}C -plants, applying $^{13}\text{CO}_2$ in its atmosphere. For this research, various plant species (*Ocimum basilicum*, basil; *Salvia officinalis*, sage; *Triticum aestivum*, wheat; *Zea mays*, maize) were

grown from seeds in hydroponics for a 9-week period in a $^{13}\text{CO}_2$ atmosphere (99 % ^{13}C , 1 % ^{12}C), instead of a natural $^{12}\text{CO}_2$ atmosphere (1.1 % ^{13}C , 98.9 % ^{12}C). Since ~ 99 % of the carbon found in these plants was in the form of ^{13}C , we can expect that nearly 99 % of the methane emitted by these plants is in the form of $^{13}\text{CH}_4$. At the natural background concentration (20 ppbv), an accuracy of 3 ppbv for $^{13}\text{CH}_4$ could be obtained in 60 s (Ngai *et al.* 2006).

For the methane emission experiments, the plants were transferred from the ESPAS to a continuous-flow gas exchange cuvette and analysed for their $^{13}\text{CH}_4$ emission. We found that ^{13}C -methane concentrations in the cuvettes with plants were not significantly higher than those in control cuvettes without plants; the difference was close to the detection limit of the system. Based on this difference, the emission rates for the four species ranged from 10 to $42 \text{ ng g}^{-1} \text{ h}^{-1}$, with an overall mean of $21 \text{ ng g}^{-1} \text{ h}^{-1}$; this is 6–18 times lower than the emission rates published earlier (Keppler *et al.* 2006). To improve the accuracy, a second experiment was performed; a large number of plants from six species (*O. basilicum* L., basil; *T. aestivum* L., wheat;

Z. mays L., maize; *S. officinalis* L., sage; *Lycopersicon esculentum* Miller, tomato; *Oenothera biennis* L., common evening primrose) were grown in the ESPAS facility and the air was accumulated over a 6-day period. An increase over time of <1 ppbv $^{13}\text{CH}_4$ was found, which implies an emission rate of between 0.9 and $0.4 \text{ ng g}^{-1} \text{ h}^{-1}$, and 0.1–0.3 % of the expected emissions based on earlier data (Keppler *et al.* 2006). Additional tests were performed to eliminate the possibility of eventual $^{13}\text{CH}_4$ loss because of leakage or oxidation which showed neither of these. The results from these tests indicated that plants produce an insignificant amount of methane in aerobic conditions.

We have also made online measurements of $^{12}\text{CH}_4$ from ‘normal’ plants (not $^{13}\text{CH}_4$) placed in closed cuvettes and flushed with methane-free air before starting the experiment as well as during it. The only methane recorded (Fig. 5) was due to the flushing out of the atmospheric methane trapped in the plant cells for several hours. This could explain, in part, the overestimated methane reported in Keppler *et al.* (2006) as production instead of atmospheric methane diffusion from plant tissue.



Plant–pathogen interaction

After the first report of exhaled NO in animals and humans (Stewart *et al.* 1995), the interest in NO monitoring has increased. In plants, NO is a signalling molecule that plays an important role in plant growth and development, stomatal regulation, and protection against biotic and abiotic stresses (Besson-Bard *et al.* 2008; Wilson *et al.* 2008; Mur *et al.* 2011). The last decade has brought many new insights into pathways of NO production and function in plants, but many details have still to be elucidated. Nitric oxide, together with reactive oxygen intermediates, play a key role in the activation of disease resistance mechanisms (Delledonne *et al.* 1998). Plant diseases are a major source of crop loss worldwide and it is important to understand how plant defence mechanisms can neutralize infections. The most visible type of plant defence is the elicitation of a highly localized programmed cell death known as the hypersensitive response (HR). Nitric oxide has emerged as an important component of HR-associated defences, so that if its production is reduced, plant resistance may be compromised.

In 2005, a laser-based photoacoustic system was used for the first online, *in planta*, monitoring of the NO production from pathogen-infected tobacco leaves (Mur *et al.* 2005b). The conclusion of this work indicated that NO influenced the kinetics of cell death and resistance to both avirulent and virulent bacteria in tobacco, and suggested that NO is integral to the elicitation of cell death associated with these two bacterial pathogens in tobacco.

Detection of gaseous NO with chemiluminescence devices is considered the ‘gold standard’, providing sufficient accuracy and precision. A convenient alternative is offered by electrochemical sensors. In spite of their lower cost and the possibility for development of portable devices, electrochemical sensors suffer from a lack of sensitivity (detection limit >5 ppbv) (Mur *et al.* 2011). Chemiluminescence detectors demand high gas flow rates (>10 L h⁻¹), which make these systems unsuitable for the detection of a low amount of NO emission. Within laser-based technology, which has the same sub-ppbv detection level as chemiluminescence, low gas flow rates over the plant tissue are not a problem (Cristescu *et al.* 2008; Mur *et al.* 2011).

In standard plant experiments, isolated pathogen-challenged leaves are placed in a closed glass cuvette and flushed with air so that NO released in the head-space is transported to the laser-based system. However, the NO production following pathogen inoculation of intact plants (including the pot) is mainly due to the soil and roots (Fig. 6). When the plant was excised at

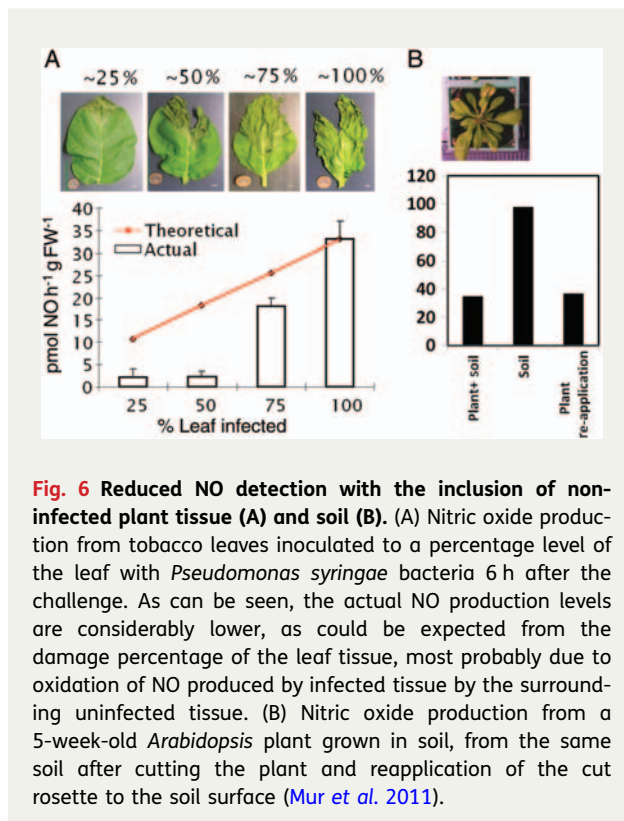


Fig. 6 Reduced NO detection with the inclusion of non-infected plant tissue (A) and soil (B). (A) Nitric oxide production from tobacco leaves inoculated to a percentage level of the leaf with *Pseudomonas syringae* bacteria 6 h after the challenge. As can be seen, the actual NO production levels are considerably lower, as could be expected from the damage percentage of the leaf tissue, most probably due to oxidation of NO produced by infected tissue by the surrounding uninfected tissue. (B) Nitric oxide production from a 5-week-old *Arabidopsis* plant grown in soil, from the same soil after cutting the plant and reapplication of the cut rosette to the soil surface (Mur *et al.* 2011).

the roots and removed, a higher NO emission from the soil was observed. Returning the excised plant to the cuvette reduced the NO emission again. This pattern shows that leaf tissues have the capacity to remove NO from the atmosphere (Fewson and Nicholas 1960; Mur *et al.* 2011). Therefore care must be exerted to make sure that as much as possible of the plant material under assessment is producing NO; otherwise NO uptake by healthy tissue would reduce the overall NO emission from the plant. In our case, we have always used heavily inoculated leaves (Mur *et al.* 2005a, b, 2008, 2011). We suggest that wherever possible, experimenters seeking to measure NO from the gas phase should maximize the proportion of plant material producing NO. In passing, these observations have implications regarding NO generation.

Fermentation products during low oxygen conditions

Under normal aerobic conditions (21% O₂), plants produce energy by stepwise oxidation of glucose to the final products CO₂ and H₂O (respiration). These steps include conversion of glucose to pyruvate, subsequent oxidation through the tricarboxylic acid cycle to CO₂, and oxidative phosphorylation, in which atmospheric

O₂ is used to produce H₂O. Under a lack of O₂, an alternative process occurs to provide the energy required to sustain the functions of life; pyruvate is converted into acetaldehyde, which is quickly reduced to ethanol, i.e. fermentation (Perata and Alpi 1993). The latter pathway, however, renders far less energy per molecule of glucose than respiration. The 'lost energy' is actually trapped in ethanol—the end product of fermentation—and could only be released by further oxidation to water and CO₂. The intermediate state, low oxygen concentrations, gives a delicate balance between respiration and fermentation. As certain plants slow down their metabolic processes under low-oxygen conditions, knowledge of the parameters determining the respiration to fermentation ratio is important.

The metabolic response and adaptation of plants to anaerobiosis have been reviewed extensively (Perata and Alpi 1993; Vartapetian and Jackson 1997; Pesis 2005). Here, we consider two cases: the influence of low-oxygen conditions on post-harvest conditions in fruit and the response of young plants in submergence conditions experiencing low oxygen concentrations.

Low oxygen concentrations are widely used in controlled-atmosphere storage of harvested fruit, e.g. apples, with the goal of prolonging fruit shelf-life (Toivonen 1997; Watada and Qi 1999) via the reduction of the respiration rate and the ethylene biosynthesis during controlled-atmosphere storage. Fermentation occurs in fruits when oxygen flux to respiring cells is reduced below a critical value. In bulky fruits under natural conditions hypoxia can occur during normal ripening, due to impaired gas exchange with the atmosphere. As certain crops are transported and stored under low-oxygen conditions to slow down metabolic processes such as ripening, knowledge of the parameters determining the respiration to fermentation ratio is of crucial importance for the conservation of the product. High levels of fermentative metabolites may affect the firmness, flavour and colour of the crop. Worldwide post-harvest losses, partly occurring in storage facilities, are estimated to amount to 30 % (Kader 2011).

The effects of ethanol and acetaldehyde on plant tissue under O₂ deprivation have been widely studied. The high reactivity of acetaldehyde is believed to cause cell death when it is present in relatively high amounts (Monk et al. 1987). On the other hand, depending on the concentration, acetaldehyde is believed to inhibit ripening in some crops such as tomato (Beaulieu et al. 1997) so that shelf-life can be prolonged by exogenously applying small amounts of this compound (Pesis 2005). In addition, acetaldehyde is known to be one of the (many) components determining the flavour of most fruits.

When fermenting plant tissue is transferred from an anoxic to an aerobic atmosphere, an increase in the acetaldehyde emission occurs as a result of oxidation of ethanol accumulated in the tissue during the exposure to anoxia (Pfister-Sieber and Brandle 1994; Boamfa et al. 2004). Such a post-anoxic acetaldehyde upsurge appears within a few minutes after transfer to normoxic conditions (Zuckermann et al. 1997) (see Fig. 7). This extremely fast reaction strengthened the belief that oxidation of ethanol by rapidly formed active oxygen species, such as hydrogen peroxide (Blokchina et al. 2001), stimulated by the enzyme catalase, is responsible for the acetaldehyde formation (Zuckermann et al. 1997).

Fermentation also occurs in plants during submergence. Rice, as a staple food and supporting ~700 million people, is such an example; 16 % of the total area cultivated for rice is potentially vulnerable to flooding. These so-called rain-fed lowland areas often suffer irregular flooding, and losses are severe if submergence lasts for periods longer than about a week (Setter et al. 1997; Ram et al. 2002). Plant survival of young seedlings depends not only on the depth and duration of submergence, but also on the quality of floodwater. Oxygen and CO₂ concentrations, turbulence and turbidity are the most important measures of floodwater quality. Oxygen deprivation is caused by an imbalance between the 10⁴ times slower diffusion of gases in water as compared with air, and the oxygen rate consumption by plants. To reduce the impact of oxygen deprivation stress, plants have evolved a wide range of characteristic responses that confer and extend tolerance to anoxia or allow adaptation and acclimation. Next to slowing down the metabolism of the plant, air is transported from the leaves above the water level to the roots via the aerenchyma, and the plant uses underwater photosynthesis to provide the leaves with oxygen (Jackson and Armstrong 1999). The final adaptation is to switch from respiration to the fermentation pathway.

Using laser-based gas detection, the impact of oxygen deprivation on young rice seedling (*Oryza sativa* L.) was investigated and its behaviour on the return to aerated conditions (Boamfa et al. 2003, 2005). For this, the dynamics of fermentation/respiration were investigated by monitoring oxygen, ethanol, acetaldehyde and CO₂ production. Young rice seedlings show clear fermentation under anaerobic conditions and a very specific post-anoxia behaviour, which greatly depends on the duration of anaerobiosis (see Fig. 8). Light can almost completely eliminate fermentation in anaerobic surroundings and also the post-anaerobic or post-submergence peaks in acetaldehyde production (Boamfa et al. 2003; Mustroph et al. 2006). It minimizes submergence damage by

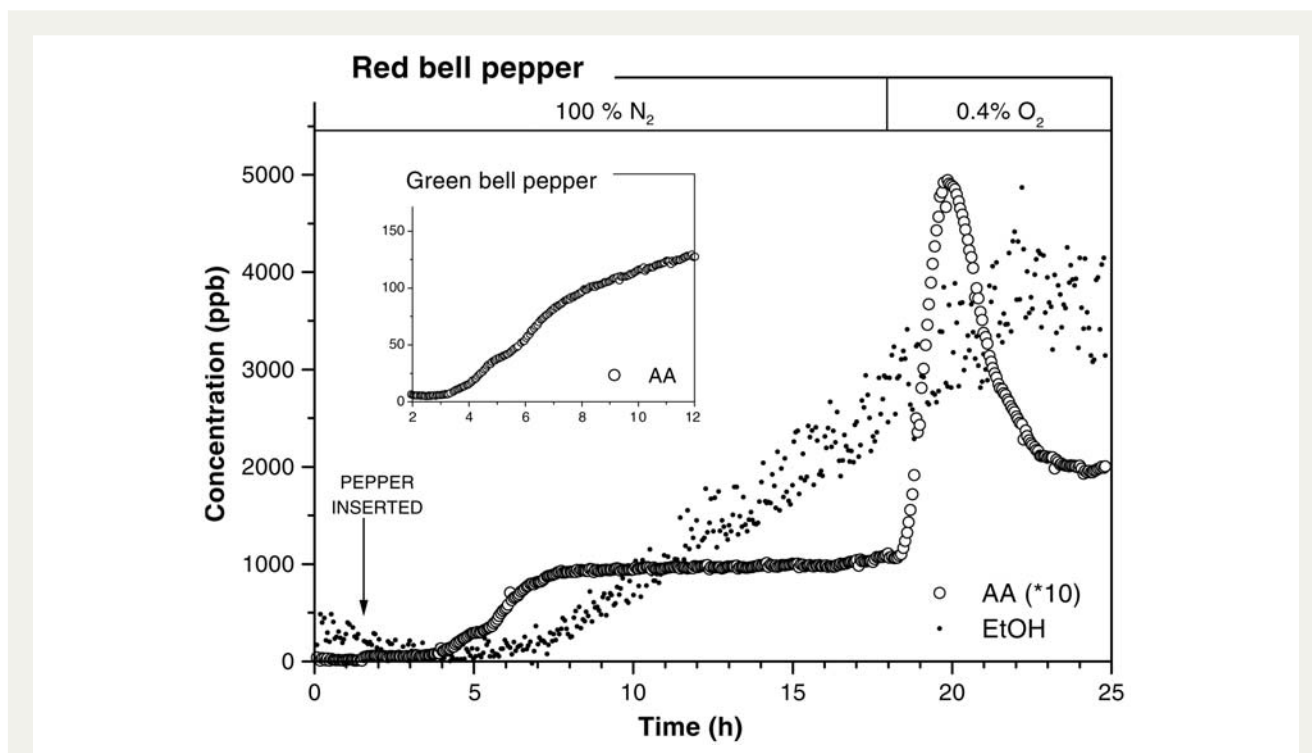


Fig. 7 Acetaldehyde (AA) and ethanol (EtOH) emission of a red bell pepper under zero-oxygen conditions. The pepper is inserted into the anoxic environment at $t = 1.5$ h. The plateau in the acetaldehyde emission indicates that there is a continuous ongoing fermentation process in which acetaldehyde is the intermediate step and ethanol the final product. Post-anoxic addition of as low as 0.4 % O₂ leads to a dramatic increase in acetaldehyde emission. In the presence of oxygen, ethanol is enzymatically converted back into ethanol. For clarity, acetaldehyde concentrations have been multiplied by 10 (Oomens *et al.* 1998).

almost completely depressing tissue anoxia by photo-synthetically generated O₂, utilizing respiratory CO₂.

The kinetics of ethanol and acetaldehyde were also investigated in rice seedlings under micro-aerobic conditions. Various species show different degrees of tolerance to low-oxygen conditions by expressing this in their difference in upsurge of acetaldehyde emission during and after micro-anaerobic conditions (0.05–0.15 %) (Boamfa *et al.* 2005). This release suggests a role for acetaldehyde production in tolerance of rice seedlings under these conditions. The extra acetaldehyde production from ethanol may help to divert the reactive oxygen species away from the damaging lipid peroxidation pathway.

Ethane as a marker for peroxidative damage

Indirect evidence that reactive oxygen species are present in post-anaerobic tissues of rice has come from results that show release of ethane (C₂H₆). Ethane is a marker for lipid peroxidation of polyunsaturated fatty acids from

cell membranes by free radicals such as superoxide (O₂⁻) (Pfister-Sieber and Brandle 1994; Halliwell and Gutteridge 2007).

Of submerged plants it often said that membrane injury from reactive oxygen species is a post-submergence phenomenon, occurring when oxygen is re-introduced after submergence-induced anoxia.

Using laser-based detection, it was found that ethane emission occurs from rice seedlings which were submerged for several days in the dark, indicating underwater membrane peroxidation and thus severely damaged tissue. In these experiments, submergence-susceptible and -tolerant cultivars were compared, in which higher ethane emissions correlated with observed higher leaf damage and lower survival of the plants (Santosa *et al.* 2007). Seedlings under anaerobic gas-phase conditions produced no ethane until re-aerated: then a small peak was observed followed by a low, steady ethane production. It was concluded that damage during submergence is not associated with extensive anoxia, but that injury is linked to membrane peroxidation in seedlings that are partially oxygen deficient while submerged.

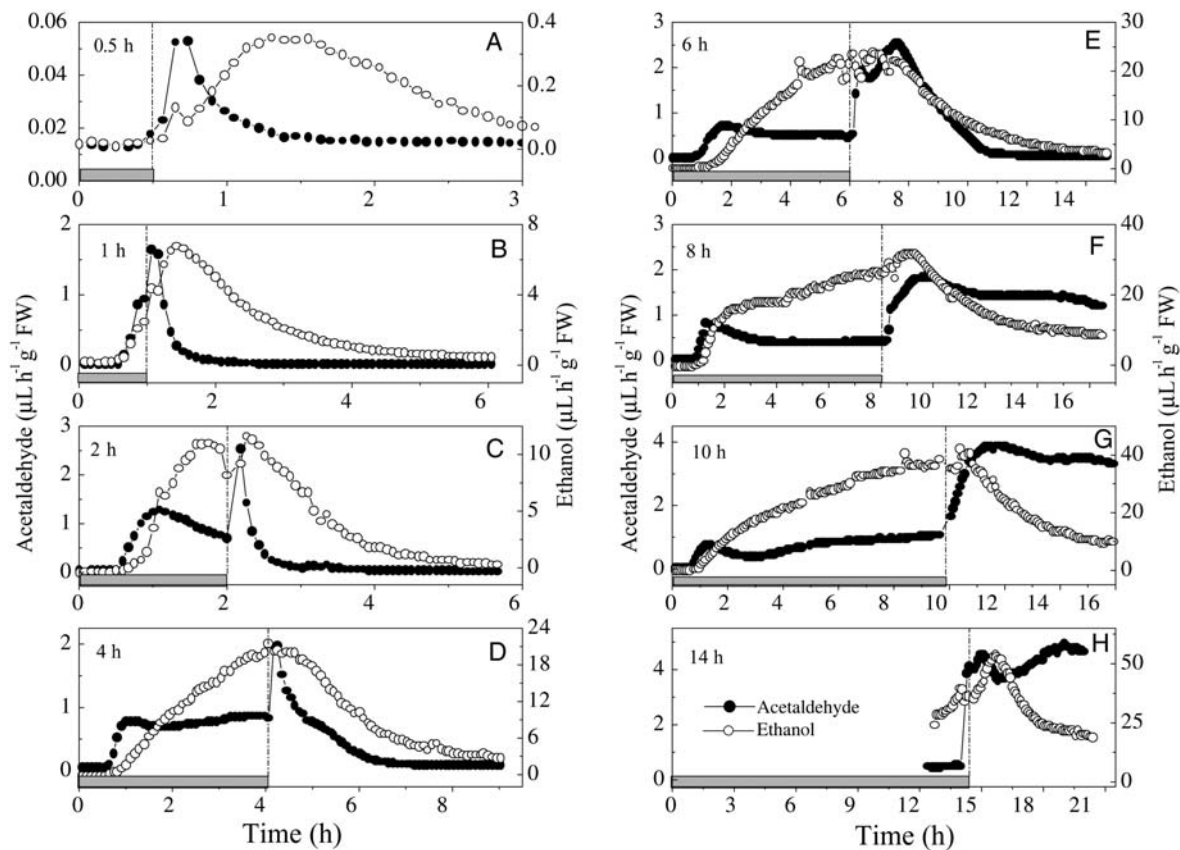


Fig. 8 Effect of anaerobic treatment and subsequent relief from anaerobiosis. The patterns of ethanol (open circles) and acetaldehyde (filled circles) emissions from single batches of three, 14-day-old, FR13A rice seedlings were measured by online laser photoacoustics. The plants were placed in the dark and given an anaerobic treatment for 0.5 h (A), 1 h (B), 2 h (C), 4 h (D), 6 h (E), 8 h (F), 10 h (G) or 14 h (H) by enclosing them in a cuvette supplied with nitrogen gas flowing at 2 L h^{-1} (grey horizontal bars). Afterwards, the plants were returned to a flow of air (2 L h^{-1}) while ethanol and acetaldehyde output continued to be measured (Boamfa *et al.* 2003).

Biogenic VOCs

Biogenic VOCs (BVOCs) provide important information about various processes in plants, such as the response to stress and signalling to its environment, next to information about the biological pathways of those compounds. On the other hand, BVOCs are also of interest to atmospheric scientists, due to the fact that they can be involved in mechanisms of ozone, aerosol and particle formation, affecting the local chemistry of the atmosphere (Guenther *et al.* 1995; de Gouw and Warneke 2007). Biogenic VOCs, other than CO and CO₂, consist (primarily) of isoprene and monoterpenes, as well as alkanes, alkenes, carbonyls, alcohols, esters, ethers and acids. Emission inventories show that isoprene and monoterpenes, which belong to the biochemical class of isoprenoids (or terpenoids), are the most prominent compounds (Lichtenthaler *et al.* 1997; Karl *et al.* 2002).

Isoprene (C₅H₈) is of interest for atmospheric chemists because of its high reactivity with other gases, and also for plant physiologists because of its light-dependent formation in chloroplasts, which indicates the amount of fixed carbon from CO₂. Despite the fact that the biochemistry of isoprene formation is known (Lichtenthaler *et al.* 1997), the role of isoprene biosynthesis in plants is still not clear. Isoprene emission represents a significant loss of energy and carbon from emitting plants, and it is assumed that plants must gain some benefits from its synthesis. Researchers hypothesize that plants benefit from isoprene emission because it helps photosynthesis to recover from short high-temperature episodes. The capability of PTR-MS to detect stable isotopes is potentially a very useful tool to study the biological pathways in relation to plant volatiles. Proton transfer reaction mass spectrometry was used to study the formation of ¹³C-isoprene during ¹³CO₂ fumigation, demonstrating

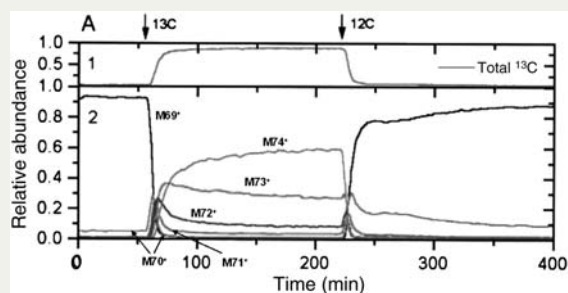


Fig. 9 Kinetics of labelling of oak leaf (*Quercus agrifolia*) isoprene following transfer to a ^{13}C environment and then back to ^{12}C . The figure shows PTR-MS data for masses from 69 to 74, which represent isoprene with zero to five ^{13}C carbons, respectively. As can be seen, ^{12}C isoprene (m/z 69) disappears rapidly after switching to ^{13}C , giving rise to isoprene molecules up to five ^{13}C atoms. This result is in agreement with the understanding that isoprene is synthesized in the chloroplasts. The species with one or two ^{13}C atoms disappear rapidly, after which in steady state fully labelled isoprene (m/z 74) summed only up to 60 % of the detected species. The experiment shows that isoprene synthesis is closely tied to the photosynthesis and photorespiration cycle (Karl *et al.* 2002).

the linkage between photosynthesis and isoprene emission in intact leaves from oak and cottonwood (Karl *et al.* 2002). The advantage of using PTR-MS in labelling experiments is its fast response, online capability and the ability to distinguish simultaneously unlabelled, and up to five ^{13}C -labelled, isoprene molecules. ^{13}C -labelling allows a detailed analysis of the kinetics of isoprene (Fig. 9).

Volatile organic compound emissions after leaf wounding and drying

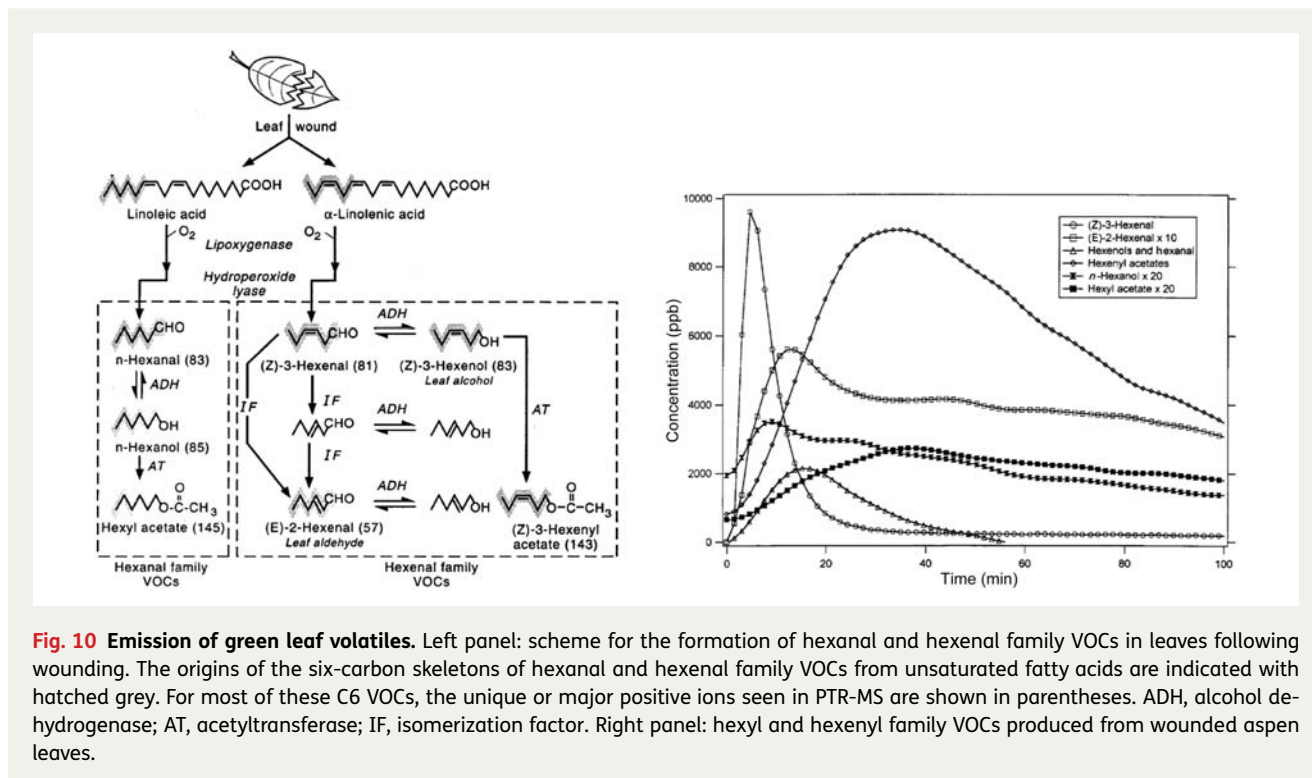
Most plants have a similar response to artificial wounding and drying. When considering VOC emission patterns, changes in both the composition and intensities of the emissions can be expected, as compared with non-stressed conditions. These compounds can be newly produced or produced at increased levels. Common compound emission indicates that these compounds occur as a general response to stress in plants and that they have connected metabolic pathways. When a leaf is wounded, the oxidative cleavage of membrane fatty acids (e.g. linoleic and α -linolenic acid) releases a series of aldehydes and alcohols containing C6 compounds (six carbon atoms) and derivatives, known as the hexanal and hexenal families (see Fig. 10; Fall *et al.* 1999). The physiological rationale for

the rapid formation of these compounds after wounding is that they have antibiotic properties and inhibit the invasion of bacteria and other microorganisms into damaged tissues (Croft *et al.* 1993). In Fig. 10 the emission of VOCs from the hexenal and hexenal families is shown after wounding of aspen leaves (Fall *et al.* 1999). A rapid peak of mass (Z)-3-hexenal emission is observed. This behaviour is consistent with the role of (Z)-3-hexenal as the precursor in the degradation process (see Fig. 10). The rapid decline in (Z)-3-hexenal takes place simultaneously with the rise of other hexenyl derivatives. The detection of hexenal is complicated by the lack of unique fragments, but the time evolution of *n*-hexanol and hexyl acetate can be independently observed at a mass to charge ratio m/z of 83 and 145, respectively. More recently, other studies have also been performed on VOC emission from potted plants and leaves after cutting (Karl *et al.* 2005; Brill *et al.* 2011).

During drying, similar C6 compounds to those from wounding are emitted by leaves, next to other VOCs. Drying emissions are more intense and longer lasting than the wounding emissions. This could be explained by the decline in water levels that takes place when leaves dry; there will be a point where cellular structures begin to collapse throughout the leaf. This collapse is likely to induce the formation of compounds from the hexenal and hexenal families by the same pathways that occur after leaf wounding, as well as other VOCs. Field drying studies have been performed together with cutting studies above mountain grassland (Bamberger *et al.* 2010), hay field (Karl *et al.* 2001), over grassland (de Gouw *et al.* 1999; Davison *et al.* 2008), alfalfa fields (Warneke *et al.* 2002) and after freeze-thaw wounding (Fall *et al.* 2001). Seco *et al.* (2007) recently reviewed emission and uptake by plants and atmospheric sources, sinks and concentrations.

Aroma and flavour compounds from fruits

Flavour is one of the most important criteria to define fruit quality. As fruit grows and ripens, a variety of chemical and structural changes take place inside the tissue. Simultaneously, volatile compounds are synthesized, and their composition and concentration will vary during the time course of ripening. Each volatile compound has a huge dynamic range (varying from a few ppbv to several ppmv) during the ripening process; therefore, both concentration level and volatile pattern are good indicators for determining the quality of fruit. The profile of volatile compounds is very complex, including a large diversity of compounds, such as alcohols,



aldehydes and esters (Buttery *et al.* 1987; Baldwin *et al.* 1991; Abbott 1999; Goff and Klee 2006).

The ability of PTR-MS to monitor and quantify simultaneously compounds from very diverse chemical groups with high sensitivity and non-invasively makes it an excellent method to monitor aroma-, flavour- and fermentation-related trace gases during growing, ripening or fruit storage. For example, in tomatoes, volatiles associated with flavours described as ‘tomato’, ‘green’ or ‘grassy’ are derived from linoleic acid (hexanal) and linolenic acid (*cis*-3-hexenal, *cis*-3-hexenol, *trans*-2-hexenal) via lipoxygenase activity (Chen *et al.* 2004). The C6 aldehydes and alcohols derived from free fatty acids are also important constituents of the flavours of a diverse group of plant products including apple, sweet cherry, olive, bay leaf and tea.

Proton transfer reaction mass spectrometry studies provided real-time monitoring of the emission of VOCs during post-harvest aging of berry fruit (Boschetti *et al.* 1999), olives (Vezzaro *et al.* 2011), apples (Boamfa *et al.* 2004; Zini *et al.* 2005), strawberries (Granitto *et al.* 2007), raspberries (Aprea *et al.* 2009) and tomatoes (Farneti *et al.* 2012). Recently, the volatiles emitted by 14 tomato varieties were analysed using multivariate statistics (principal component analysis and cluster analysis) and showed unambiguous separation between varieties. Moreover, a clear fingerprint specific to each tomato

type—round truss, cocktail and cherry tomatoes—was identified.

Plant–herbivore interaction

Ecologists are interested in the role of herbivore-induced volatiles in mediating interactions between plants, herbivores and their natural enemies (De Moraes *et al.* 1998; Kessler and Baldwin 2001). When those interactions occur, changes in both the composition and intensities of the emissions—as with abiotic stresses—can be expected. The defence of plants against feeding herbivores involves direct mechanisms, which include production of or increase in toxic compound levels. Indirect mechanisms can also be involved, such as the release of plant volatile compounds which will attract natural enemies (i.e. parasitoids and predators) of the attacking herbivores. Moreover, those volatiles can also act as ‘intermediates’ in plant-to-plant communication (Baldwin *et al.* 2006).

Using online PTR-MS it was shown that large quantities of VOCs were released when caterpillars were feeding on *Nicotiana attenuata* plants (von Dahl *et al.* 2006) and *Succisa pratensis* leaves (Penuelas *et al.* 2005). The most significant increase was in methanol released by attacked leaves at 24 h after caterpillars started feeding. Methanol production is most likely a

result of pectin demethylation in the cell walls and since this process occurs in the apoplast, methanol proves to be a common constituent of the transpiration stream in plants. All other increases in volatile emission rates were much lower than that of methanol, although most of them increased several-fold relative to unattacked plants (including volatile wound compounds and monoterpenes).

Root emissions

A large variety of VOCs, emitted by the aerial parts of green plants, have been extensively described and characterized (Kesselmeier and Staudt 1999; Dudareva *et al.* 2004, 2006). Induction from root systems received less attention. Although some root exudates have been characterized, especially secondary metabolites and proteins, much less is known about VOCs released by roots. Based on what is known about volatile-induced responses in aboveground plant parts, and the multitude of belowground organisms interacting with the roots in their natural environment, it may be expected that belowground volatile-induced responses are as common as aboveground induced responses.

Proton transfer reaction mass spectrometry was used to study VOC emissions of tree species online (Holzinger *et al.* 2000; Rottenberger *et al.* 2008). As such, emission of methanol, acetaldehyde, ethanol, acetone, acetic acid, isoprene, monoterpenes, toluene and C₁₀-benzenes could be identified next to other compounds. Of special interest was a change in the emission behaviour under changing environmental conditions such as flooding or fast light/dark changes. Flooding of the root system caused an up to 20 times increase in several VOCs, dominated by the emission of ethanol and acetaldehyde, which can be explained by the well-described production of ethanol under anoxic conditions of the root system, and subsequent transport and partial oxidation to acetaldehyde within the green leaves (Holzinger *et al.* 2000).

Plant roots create a carbon-rich environment for numerous rhizosphere organisms, including plant pathogens and symbiotic microbes. Proton transfer reaction mass spectrometry was involved in VOC emissions induced specifically as a result of compatible and non-compatible interactions between microbes and insects and *Arabidopsis thaliana* roots (Steeghs *et al.* 2004). Ethanol, acetaldehyde, acetic acid, ethyl acetate, 2-butanone, 2,3-butanedione and other VOCs were found to be produced constitutively regardless of the treatment. Compatible interactions with bacteria (*P. syringae*) and fungus (*Alternaria brassicola*) did lead to a change in the root volatile emissions. Also, when

roots were treated with aphids (*Diuraphis noxia*) specific VOCs were released, indicating that this aphid may be a compatible pest for *Arabidopsis* roots.

Roots undergoing herbivore attack were studied using *Brassica nigra* plants infested by cabbage root fly larvae (*Delia radicum*) (Crespo *et al.* 2012). Emitted VOCs were analysed with PTR-MS and gas chromatography–mass spectrometry and showed that several sulfur-containing compounds (methanethiol, dimethyl sulfide, dimethyl disulfide and dimethyl trisulfide) and glucosinolate breakdown products, such as thiocyanates and isothiocyanates, were emitted by the roots in response to infestation. The most typical marker for rapid responses was thiocyanic acid, which is also a prominent fragment of thiocyanates and isothiocyanates. Further investigations showed that the principal compounds emitted after root damage are determined by the plant species, and not by damage type or root glucosinolate composition (van Dam *et al.* 2012). Once they have been determined, the principal compounds may be used as markers for identifying damaged or infested plants. Further analyses of plant enzymes involved in the breakdown of sulfur compounds is needed to reveal the origin of sulfur-containing VOCs from plants.

Conclusions and forward look

Detection of VOCs released by plants in different conditions can provide valuable information about their physiological processes and the multitude of possible mechanisms of action and signalling, developed by plants in the course of evolution. New methods for online and real-time monitoring of trace gases are available nowadays and have demonstrated their ability in many applications. With the laser-based systems or PTR-MS instrumentation, the dynamics of low concentrations of volatiles are obtained in a time scale of seconds, without an accumulation period that could negatively influence the investigated process. These methods have demonstrated their advantages over the commonly used gas chromatograph in terms of sensitivity and time response. They are indispensable tools for specific applications where their strengths are required and cannot be fulfilled by existing technology, such as gas chromatography.

Significant advances remain to be made in plant research. As an example, hormone signalling and the role of NO are starting to emerge and we believe that online techniques will provide new insights into the understanding of the physiological mechanisms in plants.

Sources of funding

This work was supported by the GO-EFRO ‘Ultragas—gas analysis systems for quality control of agricultural products and medical diagnostics’ (project no. 2009-010034), the Q-Detect: FP7-KBBE-2009-3 ‘Developing quarantine pest detection methods for use by national plant protection organizations (NPPO) and inspection services’ (project no. 245047) and the EU-FP6-Infrastructures-5 program ‘Life Science Trace Gas Facility’ (project no. FP6-026183). Finally, we thank the Dutch Technology Foundation STW, the Dutch Royal Academy of Science and the Dutch Foundation for Fundamental Research on Matter for their financial support.

Contributions by the authors

F.J.M.H. and S.M.C. wrote the paper.

Acknowledgements

The authors thank M. B. Jackson for the invitation to write this paper for *AoB PLANTS* and J. Reuss for helpful discussions. Furthermore, we thank F. Bijnen, H de Vries, S. Persijn, T. Groot, E. Santosa, I. Boamfa, M. van Herpen, D. Arslanov, A. Ngai, B. Moeskops, D. Marchenko, E. Crespo, D. Samudrala, H. Zuckermann, J. Oomens, L. J. Laarhoven, S. te Lintel Hekkert and J. Mandon for their experimental support, and C. Sikkens, L. Gerritsen, and P. Claus for technical assistance.

Conflict of interest statement

None declared.

Literature cited

- Abbott JA. 1999.** Quality measurement of fruits and vegetables. *Postharvest Biology and Technology* **15**: 207–225.
- Apra E, Biasioli F, Carlin S, Endrizzi I, Gasperi F. 2009.** Investigation of volatile compounds in two raspberry cultivars by two headspace techniques: solid-phase microextraction/gas chromatography-mass spectrometry (SPME/GC-MS) and proton-transfer reaction-mass spectrometry (PTR-MS). *Journal of Agricultural and Food Chemistry* **57**: 4011–4018.
- Baldwin EA, Nisperoscarriedo MO, Moshonas MG. 1991.** Quantitative analysis of flavor and other volatiles and for certain constituents of 2 tomato cultivars during ripening. *Journal of the American Society for Horticultural Science* **116**: 265–269.
- Baldwin IT, Halitschke R, Paschold A, von Dahl CC, Preston CA. 2006.** Volatile signaling in plant–plant interactions: ‘Talking trees’ in the genomics era. *Science* **311**: 812–815.
- Balota M, Cristescu S, Payne WA, Hekkert STL, Laarhoven LJJ, Harren FJM. 2004.** Ethylene production of two wheat cultivars exposed to desiccation, heat, and paraquat-induced oxidation. *Crop Science* **44**: 812–818.
- Bamberger I, Hortnagl L, Schnitzhofer R, Graus M, Ruuskanen TM, Muller M, Dunkl J, Wohlfahrt G, Hansel A. 2010.** BVOC fluxes above mountain grassland. *Biogeosciences* **7**: 1413–1424.
- Beaulieu JC, Peiser G, Saltveit ME. 1997.** Acetaldehyde is a causal agent responsible for ethanol-induced ripening inhibition in tomato fruit. *Plant Physiology* **113**: 431–439.
- Berden G, Peeters R, Meijer G. 2000.** Cavity ring-down spectroscopy: experimental schemes and applications. *International Reviews in Physical Chemistry* **19**: 565–607.
- Besson-Bard A, Pugin A, Wendehenne D. 2008.** New insights into nitric oxide signaling in plants. *Annual Review of Plant Biology* **59**: 21–39.
- Bijnen FGC, Reuss J, Harren FJM. 1996.** Geometrical optimization of a longitudinal resonant photoacoustic cell for sensitive and fast trace gas detection. *Review of Scientific Instruments* **67**: 2914–2923.
- Blake RS, Monks PS, Ellis AM. 2009.** Proton-transfer reaction mass spectrometry. *Chemical Reviews* **109**: 861–896.
- Bleecker AB, Kende H. 2000.** Ethylene: a gaseous signal molecule in plants. *Annual Review of Cell and Developmental Biology* **16**: 1–18.
- Blokhina OB, Chirkova TV, Fagerstedt KV. 2001.** Anoxic stress leads to hydrogen peroxide formation in plant cells. *Journal of Experimental Botany* **52**: 1179–1190.
- Boamfa EI, Ram PC, Jackson MB, Reuss J, Harren FJM. 2003.** Dynamic aspects of alcoholic fermentation of rice seedlings in response to anaerobiosis and to complete submergence: relationship to submergence tolerance. *Annals of Botany* **91**: 279–290.
- Boamfa EI, Steeghs MML, Cristescu SM, Harren FJM. 2004.** Trace gas detection from fermentation processes in apples; an inter-comparison study between proton-transfer-reaction mass spectrometry and laser photoacoustics. *International Journal of Mass Spectrometry* **239**: 193–201.
- Boamfa EI, Veres AH, Ram PC, Jackson MB, Reuss J, Harren FJM. 2005.** Kinetics of ethanol and acetaldehyde release suggest a role for acetaldehyde production in tolerance of rice seedlings to micro-aerobic conditions. *Annals of Botany* **96**: 727–736.
- Boschetti A, Biasioli F, van Opbergen M, Warneke C, Jordan A, Holzinger R, Prazeller P, Karl T, Hansel A, Lindinger W, Iannotta S. 1999.** PTR-MS real time monitoring of the emission of volatile organic compounds during postharvest aging of berryfruit. *Postharvest Biology and Technology* **17**: 143–151.
- Brilli F, Ruuskanen TM, Schnitzhofer R, Muller M, Breitenlechner M, Bittner V, Wohlfahrt G, Loreto F, Hansel A. 2011.** Detection of plant volatiles after leaf wounding and darkening by proton transfer reaction ‘time-of-flight’ mass spectrometry (PTR-TOF). *Plos One* **6**: Article Number: e20419. doi:10.1371/journal.pone.0020419.
- Brown SS. 2003.** Absorption spectroscopy in high-finesse cavities for atmospheric studies. *Chemical Reviews* **103**: 5219–5238.
- Buttery RG, Teranishi R, Ling LC. 1987.** Fresh tomato aroma volatiles—a quantitative study. *Journal of Agricultural and Food Chemistry* **35**: 540–544.
- Chen GP, Hackett R, Walker D, Taylor A, Lin ZF, Grierson D. 2004.** Identification of a specific isoform of tomato lipoxygenase (TomloxC) involved in the generation of fatty acid-derived flavor compounds. *Plant Physiology* **136**: 2641–2651.

- Clarke SM, Cristescu SM, Miersch O, Harren FJM, Wasternack C, Mur LAJ. 2009. Jasmonates act with salicylic acid to confer basal thermotolerance in *Arabidopsis thaliana*. *New Phytologist* **182**: 175–187.
- Crespo E, Hordijk CA, de Graaf RM, Cristescu SM, Harren FJM, van Dam NM. 2012. On-line monitoring of root-induced volatiles in *Brassica nigra* plants infested with *Delia radicum* L. root fly larvae. *Phytochemistry* **84**: 68–77.
- Cristescu SM, De Martinis D, Hekkert ST, Parker DH, Harren FJM. 2002. Ethylene production by *Botrytis cinerea* *in vitro* and in tomatoes. *Applied and Environmental Microbiology* **68**: 5342–5350.
- Cristescu SM, Persijn ST, Hekkert STL, Harren FJM. 2008. Laser-based systems for trace gas detection in life sciences. *Applied Physics B—Lasers and Optics* **92**: 343–349.
- Croft KPC, Juttner F, Slusarenko AJ. 1993. Volatile products of the lipoxygenase pathway evolved from *Phaseolus vulgaris* (L) leaves inoculated with *Pseudomonas syringae* pv *phaseolicola*. *Plant Physiology* **101**: 13–24.
- Davison B, Brunner A, Ammann C, Spirig C, Jocher M, Neftel A. 2008. Cut-induced VOC emissions from agricultural grasslands. *Plant Biology* **10**: 76–85.
- de Gouw JA, Warneke C. 2007. Measurements of volatile organic compounds in the earth's atmosphere using proton-transfer-reaction mass spectrometry. *Mass Spectrometry Reviews* **26**: 223–257.
- de Gouw JA, Howard CJ, Custer TG, Fall R. 1999. Emissions of volatile organic compounds from cut grass and clover are enhanced during the drying process. *Geophysical Research Letters* **26**: 811–814.
- de Gouw JA, Warneke C, Karl T, Eerdeken G, van der Veen C, Fall R. 2003. Sensitivity and specificity of atmospheric trace gas detection by proton-transfer-reaction mass spectrometry. *International Journal of Mass Spectrometry* **223**: 365–382.
- de Gouw JA, Hekkert STL, Mellqvist J, Warneke C, Atlas EL, Fehsenfeld FC, Fried A, Frost GJ, Harren FJM, Holloway JS, Lefer B, Lueb R, Meagher JF, Parrish DD, Patel M, Pope L, Richter D, Rivera C, Ryerson TB, Samuelsson J, Walega J, Washenfelder RA, Weibring P, Zhu X. 2009. Airborne measurements of ethene from industrial sources using laser photoacoustic spectroscopy. *Environmental Science & Technology* **43**: 2437–2442.
- De Martinis D, Cotti G, Hekker ST, Harren FJM, Mariani C. 2002. Ethylene response to pollen tube growth in *Nicotiana tabacum* flowers. *Planta* **214**: 806–812.
- De Moraes CM, Lewis WJ, Pare PW, Alborn HT, Tumlinson JH. 1998. Herbivore-infested plants selectively attract parasitoids. *Nature* **393**: 570–573.
- Delledonne M, Xia YJ, Dixon RA, Lamb C. 1998. Nitric oxide functions as a signal in plant disease resistance. *Nature* **394**: 585–588.
- Dudareva N, Pichersky E, Gershenzon J. 2004. Biochemistry of plant volatiles. *Plant Physiology* **135**: 1893–1902.
- Dudareva N, Negre F, Nagegowda DA, Orlova I. 2006. Plant volatiles: recent advances and future perspectives. *Critical Reviews in Plant Sciences* **25**: 417–440.
- Dueck TA, de Visser R, Poorter H, Persijn S, Gorissen A, de Visser W, Schapendonk A, Verhagen J, Snel J, Harren FJM, Ngai AKY, Verstappen F, Bouwmeester H, Voeseek L, van der Werf A. 2007. No evidence for substantial aerobic methane emission by terrestrial plants: a C-13-labelling approach. *New Phytologist* **175**: 29–35.
- Ecker JR. 1995. The ethylene signal-transduction pathway in plants. *Science* **268**: 667–675.
- Fall R, Karl T, Hansel A, Jordan A, Lindinger W. 1999. Volatile organic compounds emitted after leaf wounding: on-line analysis by proton-transfer-reaction mass spectrometry. *Journal of Geophysical Research-Atmospheres* **104**: 15963–15974.
- Fall R, Karl T, Jordan A, Lindinger W. 2001. Biogenic C5VOCs: release from leaves after freeze-thaw wounding and occurrence in air at a high mountain observatory. *Atmospheric Environment* **35**: 3905–3916.
- Farneti B, Cristescu SM, Costa G, Harren FJM, Woltering EJ. 2012. Rapid tomato volatile profiling by using proton-transfer reaction mass spectrometry (PTR-MS). *Journal of Food Science* **77**: C551–C559.
- Fewson CA, Nicholas DJD. 1960. Utilization of nitric oxide by microorganisms and higher plants. *Nature* **188**: 794–796.
- Gianinetti A, Laarhoven LJJ, Persijn ST, Harren FJM, Petruzzelli L. 2007. Ethylene production is associated with germination but not seed dormancy in red rice. *Annals of Botany* **99**: 735–745.
- Goff SA, Klee HJ. 2006. Plant volatile compounds: sensory cues for health and nutritional value? *Science* **311**: 815–819.
- Gorissen A, Kuikman PJ, vanGinkel JH, vandeBeek H, Jansen AG. 1996. ESPAS—an advanced phytotron for measuring carbon dynamics in a whole plant–soil system. *Plant and Soil* **179**: 81–87.
- Granitto PM, Biasioli F, Aprea E, Mott D, Furlanello C, Mark TD, Gasperi F. 2007. Rapid and non-destructive identification of strawberry cultivars by direct PTR-MS headspace analysis and data mining techniques. *Sensors and Actuators B—Chemical* **121**: 379–385.
- Guenther A, Hewitt CN, Erickson D, Fall R, Geron C, Graedel T, Harley P, Klinger L, Lerdau M, McKay WA, Pierce T, Scholes B, Steinbrecher R, Tallamraju R, Taylor J, Zimmerman P. 1995. A global-model of natural volatile organic-compound emissions. *Journal of Geophysical Research—Atmospheres* **100**: 8873–8892.
- Halliwell B, Gutteridge JMC. 2007. *Free radicals in biology and medicine*. Oxford, New York: Oxford University Press.
- Harren FJM, Mandon J, Cristescu SM. 2012. Photoacoustic spectroscopy in trace gas monitoring. In: Meyers RA, ed. *Encyclopedia of analytical chemistry*. Chichester, UK: Wiley.
- Holzinger R, Sandoval-Soto L, Rottenberger S, Crutzen PJ, Kesselmeier J. 2000. Emissions of volatile organic compounds from *Quercus ilex* L. measured by proton transfer reaction mass spectrometry under different environmental conditions. *Journal of Geophysical Research—Atmospheres* **105**: 20573–20579.
- Hunter EPL, Lias SG. 1998. Evaluated gas phase basicities and proton affinities of molecules: an update. *Journal of Physical and Chemical Reference Data* **27**: 413–656.
- Iannetta PPM, Laarhoven LJ, Medina-Escobar N, James EK, McManus MT, Davies HV, Harren FJM. 2006. Ethylene and carbon dioxide production by developing strawberries show a correlative pattern that is indicative of ripening climacteric fruit. *Physiologia Plantarum* **127**: 247–259.
- Jackson MB, Armstrong W. 1999. Formation of aerenchyma and the processes of plant ventilation in relation to soil flooding and submergence. *Plant Biology* **1**: 274–287.

- Kader AA. 2011. *Postharvest technology of horticultural crops*. Oakland, CA: University of California, Agriculture and Natural Sources.
- Kanu AB, Dwivedi P, Tam M, Matz L, Hill HH. 2008. Ion mobility-mass spectrometry. *Journal of Mass Spectrometry* **43**: 1–22.
- Karl T, Guenther A, Lindinger C, Jordan A, Fall R, Lindinger W. 2001. Eddy covariance measurements of oxygenated volatile organic compound fluxes from crop harvesting using a redesigned proton-transfer-reaction mass spectrometer. *Journal of Geophysical Research—Atmospheres* **106**: 24157–24167.
- Karl T, Fall R, Rosenstiel TN, Prazeller P, Larsen B, Seufert G, Lindinger W. 2002. On-line analysis of the $^{13}\text{CO}_2$ labeling of leaf isoprene suggests multiple subcellular origins of isoprene precursors. *Planta* **215**: 894–905.
- Karl T, Harren F, Warneke C, de Gouw J, Grayless C, Fall R. 2005. Senescing grass crops as regional sources of reactive volatile organic compounds. *Journal of Geophysical Research—Atmospheres* **110**: Article Number: D15302.
- Keppler F, Hamilton JTG, Brass M, Rockmann T. 2006. Methane emissions from terrestrial plants under aerobic conditions. *Nature* **439**: 187–191.
- Kesselmeier J, Staudt M. 1999. Biogenic volatile organic compounds (VOC): an overview on emission, physiology and ecology. *Journal of Atmospheric Chemistry* **33**: 23–88.
- Kessler A, Baldwin IT. 2001. Defensive function of herbivore-induced plant volatile emissions in nature. *Science* **291**: 2141–2144.
- Kosterev AA, Tittel FK. 2002. Chemical sensors based on quantum cascade lasers. *IEEE Journal of Quantum Electronics* **38**: 582–591.
- Leprince O, Harren FJM, Buitink J, Alberda M, Hoekstra FA. 2000. Metabolic dysfunction and unabated respiration precede the loss of membrane integrity during dehydration of germinating radicles. *Plant Physiology* **122**: 597–608.
- Lichtenthaler HK, Schwender J, Disch A, Rohmer M. 1997. Biosynthesis of isoprenoids in higher plant chloroplasts proceeds via a mevalonate-independent pathway. *FEBS Letters* **400**: 271–274.
- Lide DR. 1993. *CRC handbook of chemistry and physics*. Boca Raton, FL: CRC Press.
- Lindinger W, Hansel A, Jordan A. 1998. On-line monitoring of volatile organic compounds at pptv levels by means of proton-transfer-reaction mass spectrometry (PTR-MS)—medical applications, food control and environmental research. *International Journal of Mass Spectrometry* **173**: 191–241.
- Loreto F, Schnitzler JP. 2010. Abiotic stresses and induced BVOCs. *Trends in Plant Science* **15**: 154–166.
- Miklos A, Hess P, Bozoki Z. 2001. Application of acoustic resonators in photoacoustic trace gas analysis and metrology. *Review of Scientific Instruments* **72**: 1937–1955.
- Monk LS, Braendle R, Crawford RMM. 1987. Catalase activity and postanoxic injury in monocotyledonous species. *Journal of Experimental Botany* **38**: 233–246.
- Montero C, Cristescu SM, Jimenez JB, Orea JM, Hekkert STL, Harren FJM, Urena AG. 2003. Trans-resveratrol and grape disease resistance. A dynamical study by high-resolution laser-based techniques. *Plant Physiology* **131**: 129–138.
- Mur LAJ, Laarhoven LJJ, Lloyd A, Harren F, Hall MA, Smith A. 2005a. NO interacts with salicylic acid to influence the kinetics of ethylene production during a hypersensitive response in tobacco. *Comparative Biochemistry and Physiology A—Molecular & Integrative Physiology* **141**: S244–S244.
- Mur LAJ, Santosa IE, Laarhoven LJJ, Holton NJ, Harren FJM, Smith AR. 2005b. Laser photoacoustic detection allows in planta detection of nitric oxide in tobacco following challenge with avirulent and virulent *Pseudomonas syringae* pathovars. *Plant Physiology* **138**: 1247–1258.
- Mur LAJ, Laarhoven LJJ, Harren FJM, Hall MA, Smith AR. 2008. Nitric oxide interacts with salicylate to regulate biphasic ethylene production during the hypersensitive response. *Plant Physiology* **148**: 1537–1546.
- Mur LAJ, Mandon J, Cristescu SM, Harren FJM, Prats E. 2011. Methods of nitric oxide detection in plants: a commentary. *Plant Science* **181**: 509–519.
- Mustroph A, Boamfa EI, Laarhoven LJJ, Harren FJM, Pors Y, Grimm B. 2006. Organ specific analysis of the anaerobic primary metabolism in rice and wheat seedlings—II: light exposure reduces needs for fermentation and extends survival during anaerobiosis. *Planta* **225**: 139–152.
- Ngai AKY, Persijn ST, Von Basum G, Harren FJM. 2006. Automatically tunable continuous-wave optical parametric oscillator for high-resolution spectroscopy and sensitive trace-gas detection. *Applied Physics B—Lasers and Optics* **85**: 173–180.
- Ngai AKY, Persijn ST, Lindsay ID, Kosterev AA, Gross P, Lee CJ, Cristescu SM, Tittel FK, Boller KJ, Harren FJM. 2007. Continuous wave optical parametric oscillator for quartz-enhanced photoacoustic trace gas sensing. *Applied Physics B—Lasers and Optics* **89**: 123–128.
- Oomens J, Zuckermann H, Persijn S, Parker DH, Harren FJM. 1998. CO-laser-based photoacoustic trace-gas detection: applications in postharvest physiology. *Applied Physics B—Lasers and Optics* **67**: 459–466.
- Osborne DJ, Walters J, Milborrow BV, Norville A, Stange LMC. 1996. Evidence for a non-ACC ethylene biosynthesis pathway in lower plants. *Phytochemistry* **42**: 51–60.
- Penuelas J, Filella I, Stefanescu C, Llusia J. 2005. Caterpillars of *Euphydryas aurinia* (Lepidoptera: Nymphalidae) feeding on *Succisa pratensis* leaves induce large foliar emissions of methanol. *New Phytologist* **167**: 851–857.
- Perata P, Alpi A. 1993. Plant-responses to anaerobiosis. *Plant Science* **93**: 1–17.
- Pesis E. 2005. The role of the anaerobic metabolites, acetaldehyde and ethanol, in fruit ripening, enhancement of fruit quality and fruit deterioration. *Postharvest Biology and Technology* **37**: 1–19.
- Pfister-Sieber M, Brandle R. 1994. Aspects of plant behavior under anoxia and postanoxia. *Proceedings of the Royal Society of Edinburgh Section B—Biological Sciences* **102**: 313–324.
- Ram PC, Singh BB, Singh AK, Ram P, Singh PN, Singh HP, Boamfa I, Harren F, Santosa E, Jackson MB, Setter TL, Reuss J, Wade LJ, Singh VP, Singh RK. 2002. Submergence tolerance in rainfed lowland rice: physiological basis and prospects for cultivar improvement through marker-aided breeding. *Field Crops Research* **76**: 131–152.
- Roeder S, Dreschler K, Wirtz M, Cristescu SM, van Harren FJM, Hell R, Piechulla B. 2009. SAM levels, gene expression of SAM synthetase, methionine synthase and ACC oxidase, and ethylene emission from *N. suaveolens* flowers. *Plant Molecular Biology* **70**: 535–546.

- Rothman LS, Gordon IE, Barbe A, Benner DC, Bernath PE, Birk M, Boudon V, Brown LR, Campargue A, Champion JP, Chance K, Coudert LH, Dana V, Devi VM, Fally S, Flaud JM, Gamache RR, Goldman A, Jacquemart D, Kleiner I, Lacombe N, Lafferty WJ, Mandin JY, Massie ST, Mikhailenko SN, Miller CE, Moazzen-Ahmadi N, Naumenko OV, Nikitin AV, Orphal J, Perevalov VI, Perrin A, Predoi-Cross A, Rinsland CP, Rotger M, Simeckova M, Smith MAH, Sung K, Tashkun SA, Tennyson J, Toth RA, Vandaele AC, Vander Auwera J. 2009. The HITRAN 2008 molecular spectroscopic database. *Journal of Quantitative Spectroscopy & Radiative Transfer* **110**: 533–572.
- Rottenberger S, Kleiss B, Kuhn U, Wolf A, Piedade MTF, Junk W, Kesselmeier J. 2008. The effect of flooding on the exchange of the volatile C-2-compounds ethanol, acetaldehyde and acetic acid between leaves of Amazonian floodplain tree species and the atmosphere. *Biogeosciences* **5**: 1085–1100.
- Santosa IE, Ram PC, Boamfa EI, Laarhoven LJJ, Reuss J, Jackson MB, Harren FJM. 2007. Patterns of peroxidative ethane emission from submerged rice seedlings indicate that damage from reactive oxygen species takes place during submergence and is not necessarily a post-anoxic phenomenon. *Planta* **226**: 193–202.
- Schroder R, Cristescu SM, Harren FJM, Hilker M. 2007. Reduction of ethylene emission from Scots pine elicited by insect egg secretion. *Journal of Experimental Botany* **58**: 1835–1842.
- Seco R, Penuelas J, Filella I. 2007. Short-chain oxygenated VOCs: emission and uptake by plants and atmospheric sources, sinks, and concentrations. *Atmospheric Environment* **41**: 2477–2499.
- Setter TL, Ellis M, Laureles EV, Ella ES, Senadhira D, Mishra SB, Sarkarung S, Datta S. 1997. Physiology and genetics of submergence tolerance in rice. *Annals of Botany* **79**: 67–77.
- Smith D, Spanel P. 2005. Selected ion flow tube mass spectrometry (SIFT-MS) for on-line trace gas analysis. *Mass Spectrometry Reviews* **24**: 661–700.
- Steeghs M, Bais HP, de Gouw J, Goldan P, Kuster W, Northway M, Fall R, Vivanco JM. 2004. Proton-transfer-reaction mass spectrometry as a new tool for real time analysis of root-secreted volatile organic compounds in arabidopsis. *Plant Physiology* **135**: 47–58.
- Stewart TE, Valenza F, Ribeiro SP, Wener AD, Volgyesi G, Mullen JBM, Slutsky AS. 1995. Increased nitric-oxide in exhaled gas as an early marker of lung inflammation in a model of sepsis. *American Journal of Respiratory and Critical Care Medicine* **151**: 713–718.
- Thain SC, Vandenbussche F, Laarhoven LJJ, Dowson-Day MJ, Wang ZY, Tobin EM, Harren FJM, Millar AJ, Van Der Straeten D. 2004. Circadian rhythms of ethylene emission in *Arabidopsis*. *Plant Physiology* **136**: 3751–3761.
- Tholl D, Boland W, Hansel A, Loreto F, Rose USR, Schnitzler JP. 2006. Practical approaches to plant volatile analysis. *Plant Journal* **45**: 540–560.
- Tittel FK, Richter D, Fried A. 2003. Mid-infrared laser applications in spectroscopy. *Solid-State Mid-Infrared Laser Sources* **89**: 445–510.
- Toivonen PMA. 1997. Non-ethylene, non-respiratory volatiles in harvested fruits and vegetables: their occurrence, biological activity and control. *Postharvest Biology and Technology* **12**: 109–125.
- van Dam NM, Samudrala D, Harren FJM, Cristescu SM. 2012. Real-time analysis of sulfur containing volatiles in *Brassica* plants infested with root feeding *Delia radicum* larvae using proton transfer reaction-mass spectrometry. *AoB Plants* **2012**: pls021; doi:10.1093/aobpla/pls021.
- van Herpen M, Li SC, Bisson SE, Harren FJM. 2002. Photoacoustic trace gas detection of ethane using a continuously tunable, continuous-wave optical parametric oscillator based on periodically poled lithium niobate. *Applied Physics Letters* **81**: 1157–1159.
- Vandenbussche F, Smalle J, Le J, Saibo NJM, De Paepe A, Chaerle L, Tietz O, Smets R, Laarhoven LJJ, Harren FJM, Van Onckelen H, Palme K, Verbelen JP, Van der Straeten D. 2003a. The *Arabidopsis* mutant alh1 illustrates a cross talk between ethylene and auxin. *Plant Physiology* **131**: 1228–1238.
- Vandenbussche F, Vriezen WH, Smalle J, Laarhoven LJJ, Harren FJM, Van Der Straeten D. 2003b. Ethylene and auxin control the *Arabidopsis* response to decreased light intensity. *Plant Physiology* **133**: 517–527.
- Vartapetian BB, Jackson MB. 1997. Plant adaptations to anaerobic stress. *Annals of Botany* **79**: 3–20.
- Vezzaro A, Boschetti A, Dell'Anna R, Canteri R, Dimauro M, Ramina A, Ferasin M, Giulivo C, Ruperti B. 2011. Influence of olive (cv Grignano) fruit ripening and oil extraction under different nitrogen regimes on volatile organic compound emissions studied by PTR-MS technique. *Analytical and Bioanalytical Chemistry* **399**: 2571–2582.
- Voeselek L, Harren FJM, Bogemann GM, Blom C, Reuss J. 1990. Ethylene production and petiole growth in rumex plants induced by soil waterlogging—the application of a continuous-flow system and a laser driven intracavity photoacoustic detection system. *Plant Physiology* **94**: 1071–1077.
- Voeselek L, Banga M, Thier RH, Mudde CM, Harren FJM, Barendse GWM, Blom C. 1993. Submergence-induced ethylene synthesis, entrapment, and growth in 2 plant-species with contrasting flooding resistances. *Plant Physiology* **103**: 783–791.
- von Dahl CC, Havecker M, Schlogl R, Baldwin IT. 2006. Caterpillar-elicited methanol emission: a new signal in plant-herbivore interactions? *Plant Journal* **46**: 948–960.
- Wagstaff C, Chanasut U, Harren FJM, Laarhoven LJ, Thomas B, Rogers HJ, Stead AD. 2005. Ethylene and flower longevity in *Alstroemeria*: relationship between tepal senescence, abscission and ethylene biosynthesis. *Journal of Experimental Botany* **56**: 1007–1016.
- Warneke C, Luxembourg SL, de Gouw JA, Rinne HJI, Guenther AB, Fall R. 2002. Disjunct eddy covariance measurements of oxygenated volatile organic compounds fluxes from an alfalfa field before and after cutting. *Journal of Geophysical Research-Atmospheres* **107**: Article Number: 4067. doi:10.1029/2001JD000594.
- Watada AE, Qi L. 1999. Quality of fresh-cut produce. *Postharvest Biology and Technology* **15**: 201–205.
- Werle P. 1998. A review of recent advances in semiconductor laser based gas monitors. *Spectrochimica Acta Part A—Molecular and Biomolecular Spectroscopy* **54**: 197–236.
- Wilson ID, Neill SJ, Hancock JT. 2008. Nitric oxide synthesis and signalling in plants. *Plant Cell and Environment* **31**: 622–631.
- Woltering EJ, Harren F. 1989a. Early changes in ethylene production during senescence of *Carnation* and *Phalaenopsis* flowers measured by laser photoacoustic detection. In: Clijsters H, ed.

Biochemical and physiological aspects of ethylene production in lower and higher plants. Dordrecht, The Netherlands: Kluwer Academic Publ..

- Woltering EJ, Harren F. 1989b.** Role of rostellum desiccation in emasculation-induced phenomena in orchid flowers. *Journal of Experimental Botany* **40**: 907–912.
- Woltering EJ, Harren F, Boerrigter HAM. 1988.** Use of a laser-driven photoacoustic detection system for measurement of ethylene production in cymbidium flowers. *Plant Physiology* **88**: 506–510.
- Woltering EJ, Vanhout M, Somhorst D, Harren F. 1993.** Roles of pollination and short-chain saturated fatty-acids in flower senescence. *Plant Growth Regulation* **12**: 1–10.
- Woltering EJ, deVrije T, Harren F, Hoekstra FA. 1997.** Pollination and stigma wounding: same response, different signal? *Journal of Experimental Botany* **48**: 1027–1033.

Yakimova ET, Kapchina-Toteva VM, Laarhoven LJ, Harren FM, Woltering EJ. 2006. Involvement of ethylene and lipid signalling in cadmium-induced programmed cell death in tomato suspension cells. *Plant Physiology and Biochemistry* **44**: 581–589.

Yang SF, Hoffman NE. 1984. Ethylene biosynthesis and its regulation in higher plants. *Annual Review of Plant Physiology and Plant Molecular Biology* **35**: 155–189.

Zini E, Biasioli F, Gasperi F, Mott D, Aprea E, Mark TD, Patocchi A, Gessler C, Komjanc M. 2005. QTL mapping of volatile compounds in ripe apples detected by proton transfer reaction-mass spectrometry. *Euphytica* **145**: 269–279.

Zuckermann H, Harren FJM, Reuss J, Parker DH. 1997. Dynamics of acetaldehyde production during anoxia and post-anoxia in red bell pepper studied by photoacoustic techniques. *Plant Physiology* **113**: 925–932.