

REVIEW

# Dynamics of branched tissue assembly

Sriram Manivannan<sup>1</sup> and Celeste M Nelson<sup>1,2,\*</sup>

## Abstract

The assembly of cells into tissues is a complex process controlled by numerous signaling pathways to ensure the fidelity of the final structure. Tissue assembly is also very dynamic, as exemplified by the formation of branched organs. Here we present two examples of tissue assembly in branched systems that highlight this dynamic nature: formation of the tracheal network in *Drosophila melanogaster* and the ducts of the mammary gland in mice. Extension of the branches during tracheal development is a stereotyped process that produces identical organ geometries across individuals, whereas elongation of the ducts of the pubertal mammary gland is a non-stereotyped process that produces unique patterns. By studying these two organs, we can begin to understand the dynamic nature of development of other stereotyped and non-stereotyped branching systems, including the lung, kidney, and salivary gland.

The self assembly of cells into tissues and organs is an elegant and intricate process that is vital for development and homeostasis. During organogenesis, the assembly of cells is controlled genetically as well as through cues from cell-cell and cell-matrix interactions [1,2]. Cells assemble into higher-order patterns that are either stereotyped such that there is little variation in the timing and final architecture between individuals, or non-stereotyped, which leads to differences in the details [3]. The branching of the ducts of the pubertal mammary gland is a non-stereotyped process in which the interactions between the ducts and their surrounding microenvironment produce unique tree-like architectures. In contrast, branching of the trachea in *Drosophila melanogaster* is a stereotyped process that is under strict genetic control. These two systems serve as excellent models with which

to investigate the dynamic interplay between cells during tissue formation, under two different modes of control.

## Formation of the trachea in *D. melanogaster*

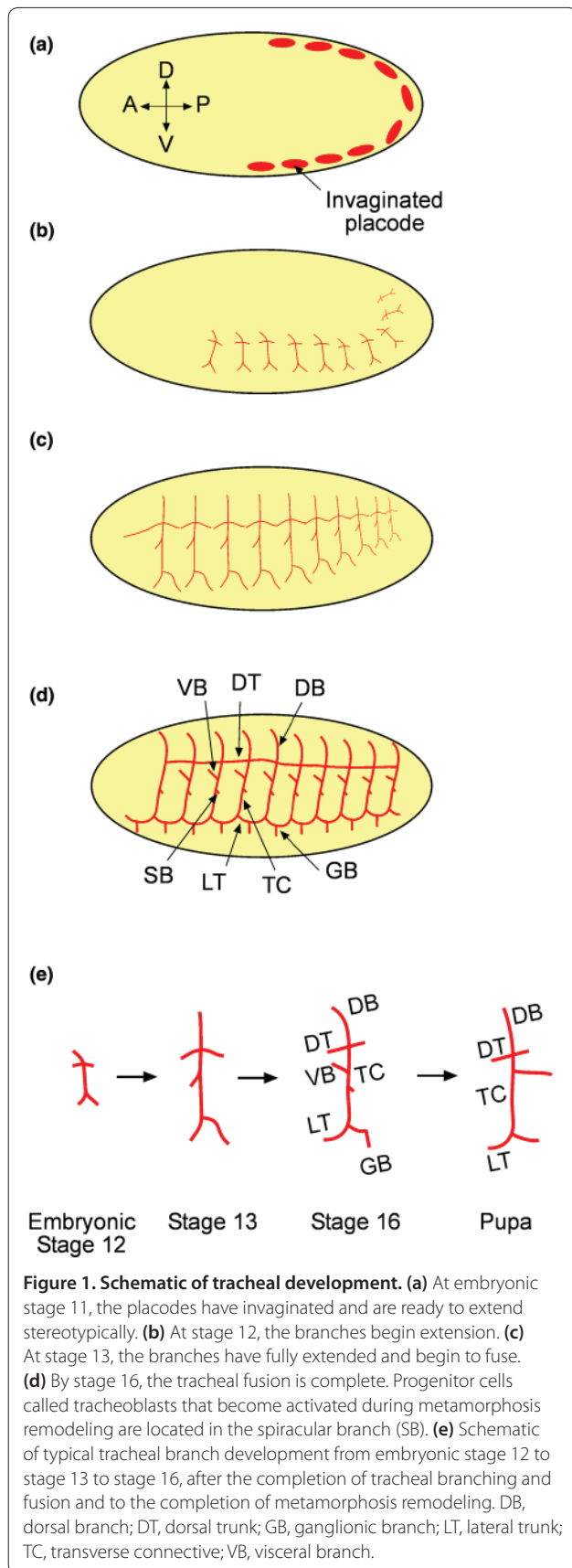
The trachea of the fruit fly is a ductal structure responsible for the delivery of oxygen to tissues. This organ forms during embryonic development and involves invagination, division, extension and fusion of select cells of placodes along the lateral ectoderm (Figure 1). The determination and positioning of the placodes as well as the choreographed steps that lead to the formation of the trachea is predominantly under the control of the gene *tracheiless* (*Trh*) [4,5]. At embryonic stage 11, through the activation of the gene *rhuboid* (*Rho*) by *Trh*, the 20 placodes containing approximately 40 cells each invaginate through apical constriction and undergo mitotic division to form 80-cell tracheal sacs [6-8]. The internalized cells then extend from the sites of invagination to form six distinct branches: the dorsal branch (DB), dorsal trunk (DT), visceral branch (VB), lateral trunk (LT), ganglionic branch (GB), and transverse connective (TC). The TC forms from the mid-region of each sac, and DTs extend along the anterior-posterior axis and fuse with DTs of the neighboring sacs to form the main throughway of the trachea. The cells of the DB migrate dorsally and select fusion cells that bind with their counterpart cells of DBs at the opposite side of the embryo [9], while the cells of the LT migrate ventrally and bind with their counterpart LT cells of neighboring metameres to the anterior and posterior, thus fusing the branches and forming additional contiguous pathways for circulation. The cells of the VB and GB do not fuse with those of the neighboring sacs but still branch and extend into the surroundings to complete the tracheal structure [7]. The extensions of the branches are guided by various signaling pathways, including *Breathless* (*Btl*) [10], *Decapentaplegic* (*Dpp*) [11] and *Slit* [12]. Even in a strictly stereotyped branching system such as this, however, the role of cellular dynamics is vital and can be seen in the extension and fusion of the DB.

The DB consists of approximately six cells and these cells migrate dorsally away from the sac toward the morphogen *Branchless* (*Bnl*), which acts as a chemo-attractant secreted by the surrounding cells [13]. However, the branch is able to extend normally even when all

\*Correspondence: celesten@princeton.edu

<sup>1</sup>Department of Chemical and Biological Engineering, Princeton University, Princeton, NJ 08544, USA

Full list of author information is available at the end of the article

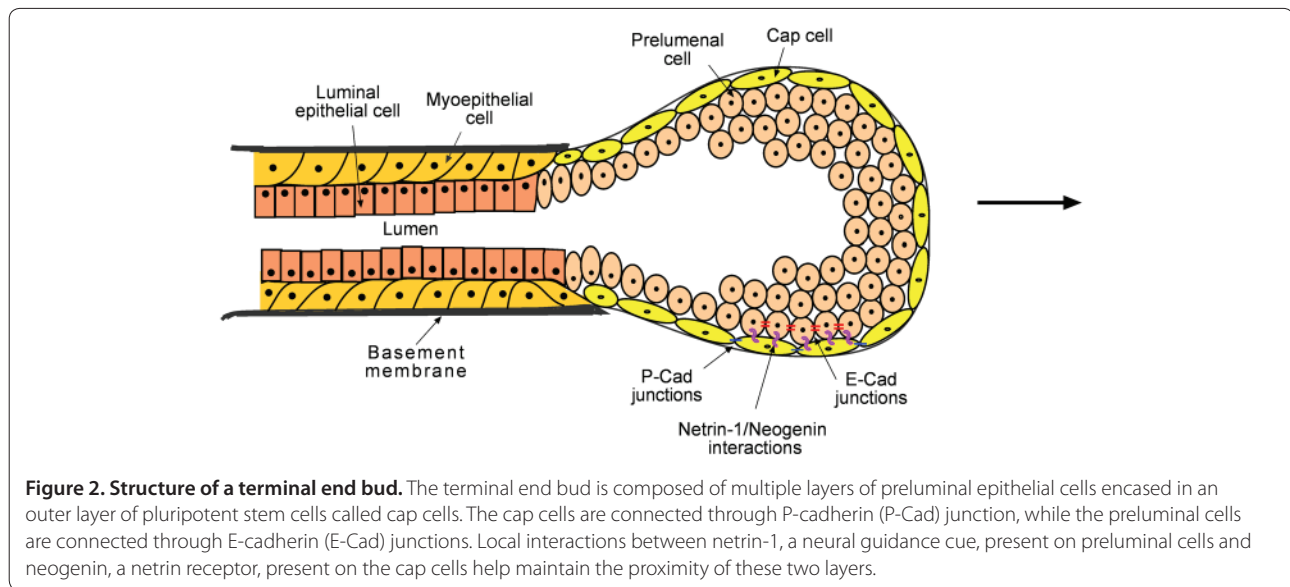


but one of the cells is devoid of Btl, the receptor for Bnl [14]. The cell with functional Btl receptors acts as a leader and is able to guide the rest of the cells. In wild-type embryos, a leader cell emerges even when every cell expresses Btl. At this stage of development, the cells of the DB are nearly identical and there is no predetermined leader; however, there are small differences in the expression level of Btl. By exploiting these small differences, the cells with the highest expression levels of Btl jockey for the lead position in the newly forming branch, while simultaneously amplifying the difference in the activation of Btl among the population through Notch-mediated lateral inhibition [14-17]. The activation of Btl by Bnl induces the production of Delta, a ligand that binds to and activates Notch in the neighboring cells. Activated Notch inhibits signaling downstream of the Btl receptor and production of Delta within that cell. Over time, this results in one cell with substantially higher Btl activity than its neighbors [16,17]. The successful cell assumes the role of the leader at the tip of the branch while the other cells form the stalk. This establishes a hierarchy and the leader cell is able to efficiently move the branch up the Bnl gradient. As the dorsal branch extends, one of the cells of the branch comes in contact with a cell from the neighboring branch and binds to it, thus fusing the branches to form a contiguous airway [9]. Notch signaling again plays a similar role by aiding Bnl and Dpp and ordaining the fusion cell fate [16,18,19].

During metamorphosis, the trachea once again undergoes significant remodeling. Posterior tracheal branches are lost while anterior branches expand to cover that space and new cells replace most of the cells in the existing branches. Progenitor cells called tracheoblasts that have remained quiescent during embryonic and larval development begin to proliferate and travel along the TC and VB under the guidance of Btl and replace the old cells [20,21]. However, the DBs are replaced not by progenitor cells but by differentiated DB cells that reenter the cell cycle and proliferate to replace the existing branch [21].

### Formation of the mammary ducts

The mammary gland is a ductal structure responsible for production and secretion of milk in mammals. The ducts of the mammary gland are composed of a hollow lumen surrounded by a layer of luminal epithelial cells, which are themselves surrounded by a layer of myoepithelial cells that create the basement membrane that separates the epithelium from the stroma. During puberty in rodents, hormones from the ovary and the pituitary gland induce the formation of bulbous terminal end buds (TEBs) at the tips of the rudimentary epithelial ducts [22]. Extension and branching of the TEBs into the surrounding mesenchyme sculpt the highly branched



成熟乳腺上皮树。TEB 由多层预腺上皮细胞包裹在外层多能干细胞（称为帽细胞）中（图 2）[23]。帽细胞和预腺上皮细胞高度增殖。快速增殖产生的力，加上在导管前端基底膜的侧向构建和细胞外基质的破坏，被认为推动导管以平均每天 500  $\mu\text{m}$  的速度向前延伸 [24,25]。随着 TEB 的延伸，帽细胞沿导管侧向移动并分化为肌上皮细胞，而预腺上皮细胞则分化为腺上皮细胞 [26]。TEB 的结构通过 E-钙粘蛋白和 P-钙粘蛋白介导的粘附连接以及 netrin-1/neogenin 相互作用得以维持。预腺细胞通过 E-钙粘蛋白相互作用，而帽细胞通过 P-钙粘蛋白相互作用 [27]。预腺细胞与 netrin-1（一种神经导向信号，存在于预腺细胞上）和 neogenin（一种 netrin 受体，存在于帽细胞上）之间的局部相互作用有助于维持预腺细胞与帽细胞的接近 [25]。丢失 netrin 或 neogenin 会导致帽细胞层与预腺层分离，从而破坏 TEB [25]。

雌激素和生长激素通过激活雌激素受体 ( $\text{ER}\alpha$ ) 和生长激素受体，分别在导管周围的间质细胞中启动导管延伸 [27-29]。生长激素受体的激活通过胰岛素样生长因子通路 [30]。雌激素信号导致上皮中孕激素受体的激活，从而诱导上皮增殖和导管运动。雌激素信号还刺激间质细胞通过 amphiregulin 和

表皮生长因子受体 [22]。间质细胞激活多种 MMPs，包括 MMP3 和 MMP14。MMP14 激活 MMP2，有助于导管延伸，通过防止导管内的细胞凋亡。MMP2 和 MMP3 还参与确定侧支分支的位点，MMP2 通过刺激转化生长因子 ( $\text{TGF}\beta$ ) 的产生来防止侧支分支的启动，而 MMP3 通过降解基底膜并允许细胞穿过脂肪垫 [31]。

与气管分支不同，没有证据表明存在一种全局趋化剂，它引导 TEBs 穿过脂肪垫 [32]。TEBs 穿过脂肪垫，沿导管延伸侧支并分叉，通过整合全局刺激信号与更多局部信号，包括来自邻近细胞、其环境和自身几何形状的信号 [32]。导管内固有的机械应力模式源于其几何形状与细胞收缩的耦合，以及它们通过粘附连接将这些力传递给邻居的能力 [33]。这些机械应力模式似乎调节了分支启动的位点。事实上，三维器官培养模型表明，分支从机械应力最高的区域启动 [32]，这些区域的细胞采用更具运动性的间质表型 [34,35]，增加信号传导，通过 focal adhesion kinase (FAK) [32]，并增加 MMPs 的生产以降解周围的基质，所有这些都能促进分支延伸 [36]。然而，虽然高机械应力对于分支启动是必要的，但它并不充分 [32]。分支启动和延伸还受局部

concentration of morphogens such as TGF $\beta$  [37]. High concentrations of TGF $\beta$  prevent branching of the ducts, and autocrine secretion of this inhibitory morphogen by the epithelial cells is thought to prevent aberrant branching and maintain proper spacing between ducts [37,38]. By responding to these various stimulatory and inhibitory cues, the TEBs navigate through the stroma until they reach the limits of the fat pad, where they regress and form terminal ducts. However, the ducts still maintain a certain population of undifferentiated stem cells that are capable of self-renewal and repopulation of the entire mammary gland [39,40]. These undifferentiated cells are thought to aid in the remodeling of the mammary gland during and after pregnancy, where further ductal expansion and regression occur, respectively [40].

### Conclusion

Branching of the trachea and the mammary gland highlight the dynamic process of tissue formation. These two systems show how stem cells, progenitor cells and differentiated cells come together, and through a combination of global and local guidance cues specify the final architecture of the tissue. During puberty in mammals, the pluripotent cap cells combined with other cell types of the TEB and through the regulation of the microenvironment produce the unique pattern of the ductal tree. In the formation of *D. melanogaster* trachea, even though the final architecture is fixed, the cells of the invaginated tracheal placodes have a high degree of freedom to determine the leaders, the fusion cells and those that will remain quiescent during the various branch formations. In addition to normal development, the dynamics of stem cells also come into play during tumor formation. Cancer stem cells (CSCs) are specialized cells within tumors that are capable of self-renewal and initiation of tumors [41]. CSCs have all the characteristics of normal stem cells and are even capable of generating non-malignant structures [42,43]. The origin of CSCs is still hotly debated. While the similarities between CSCs and normal stem cells might strongly suggest that CSCs arise through aberrant differentiation of normal stem cells, there is also evidence to suggest that CSCs might arise from progenitors or even through dedifferentiation of fully differentiated cells. Understanding the dynamics of cells during normal development will help in understanding CSCs and malignant development in general, as many of the processes involved in normal development are conserved in malignant development.

Thanks in large part to advances in technology, we are finally able to glimpse at the complexities of developmental processes. However, better *in vivo* imaging approaches are needed to fully answer most of the open questions, as it is near impossible to investigate dynamic

processes using still images. Advances in live imaging could help, for example, to study the formation and movement of the TEBs. Studies in culture have suggested that organization of the TEBs might involve cellular sorting to optimize the structure for invasion through the fatpad [44]; however, this has yet to be shown *in vivo*. Furthermore, the mechanism by which the TEB moves through the fatpad is still unclear [45]. In addition to imaging, advances in techniques to manipulate *in vivo* microenvironments might prove to be the most fruitful venture. The mechanics of the microenvironment integrate with molecular cues in the regulation of cell division, motility, branching, and stem cell differentiation [46]. Laser ablation studies in *D. melanogaster* have been used to show the involvement of tensile forces in tracheal branching [47-49]. At present, however, culture models still provide one of the best means of studying the effects of the mechanics of the microenvironment on these processes in a controlled and quantifiable manner. While they do suffer from drawbacks of artificiality, sophisticated three-dimensional culture models can aid to bridge the gap between the plastic world and the *in vivo* world, and could play an important role in studying the interplay between multiple cell types during development [50,51]. A better appreciation of the dynamic nature of tissue assembly will have a great impact on the study of normal and malignant development and may also will help advance the field of tissue engineering.

This article is part of a thematic series on *Physical influences on stem cells* edited by Gordana Vunjak-Novakovic. Other articles in the series can be found online at <http://stemcellres.com/series/physical>

### Abbreviations

BNL, Branchless; BTL, Breathless; CSC, cancer stem cell; DB, dorsal branch; DPP, Decapentaplegic; DT, dorsal trunk; GB, ganglionic branch; LT, lateral trunk; MMP, matrix metalloproteinase; TC, transverse connective; TEB, terminal end bud; TGF, transforming growth factor; Trh, Tracheless; VB, visceral branch.

### Competing interests

The authors declare that they have no competing interests.

### Acknowledgements

Work from the authors' lab was supported in part by the NIH (CA128660, GM083997, and HL110335), Susan G Komen for the Cure, the David and Lucile Packard Foundation, and the Alfred P Sloan Foundation. CMN holds a Career Award at the Scientific Interface from the Burroughs Wellcome Fund.

### Author details

<sup>1</sup>Department of Chemical and Biological Engineering, Princeton University, Princeton, NJ 08544, USA. <sup>2</sup>Department of Molecular Biology, Princeton University, Princeton, NJ 08544, USA.

Published: 31 October 2012

### References

1. Davies JA: **Self-organization as a tool in mammalian tissue engineering.** In *Advances in Regenerative Medicine*. Edited by Wislet-Gendebien S. In Tech; 2011:261-274.
2. Whitesides GM, Grzybowski B: **Self-assembly at all scales.** *Science* 2002, **295**:2418-2421.



3. Gjorevski N, Nelson CM: **Integrated morphodynamic signalling of the mammary gland.** *Nat Rev Mol Cell Bio* 2011, **12**:581-593.
4. Chung S, Chavez C, Andrew DJ: **Tracheless (Trh) regulates all tracheal genes during Drosophila embryogenesis.** *Dev Biol* 2011, **360**:160-172.
5. Nishimura M, Inoue Y, Hayashi S: **A wave of EGFR signaling determines cell alignment and intercalation in the Drosophila tracheal placode.** *Development* 2007, **134**:4273-4282.
6. Kerman BE, Cheshire AM, Andrew DJ: **From fate to function: the Drosophila trachea and salivary gland as models for tubulogenesis.** *Differentiation* 2006, **74**:326-348.
7. Maruyama R, Andrew DJ: **Drosophila as a model for epithelial tube formation.** *DevDynam* 2012, **241**:119-135.
8. Petit V, Ribeiro C, Ebner A, Affolter M: **Regulation of cell migration during tracheal development in Drosophila melanogaster.** *Int J Dev Biol* 2002, **46**:125-132.
9. Gervais L, Lebreton G, Casanova J: **The making of a fusion branch in the Drosophila trachea.** *Dev Biol* 2012, **362**:187-193.
10. Klambt C, Glazer L, Shilo BZ: **breathless, A Drosophila FGF receptor homolog, is essential for migration of tracheal and specific midline glial cells.** *Genes Dev* 1992, **6**:1668-1678.
11. Vincent S, Ruberte E, Grieder NC, Chen CK, Haerty T, Schuh R, Affolter M: **DPP controls tracheal cell migration along the dorsoventral body axis of the Drosophila embryo.** *Development* 1997, **124**:2741-2750.
12. Englund C, Steneberg P, Falileeva L, Xylourgidis N, Samakovlis C: **Attractive and repulsive functions of Slit are mediated by different receptors in the Drosophila trachea.** *Development* 2002, **129**:4941-4951.
13. Metzger RJ, Krasnow MA: **Genetic control of branching morphogenesis.** *Science* 1999, **284**:1635-1639.
14. Ghabrial AS, Krasnow MA: **Social interactions among epithelial cells during tracheal branching morphogenesis.** *Nature* 2006, **441**:746-749.
15. Hacohen N, Kramer S, Sutherland D, Hiromi Y, Krasnow MA: **sprouty encodes a novel antagonist of FGF signaling that patterns apical branching of the Drosophila airways.** *Cell* 1998, **92**:253-263.
16. Ikeya T, Hayashi S: **Interplay of Notch and FGF signaling restricts cell fate and MAPK activation in the Drosophila trachea.** *Development* 1999, **126**:4455-4463.
17. Ohshiro T, Emori Y, Saigo K: **Ligand-dependent activation of breathless FGF receptor gene in Drosophila developing trachea.** *Mech Dev* 2002, **114**:3-11.
18. Steneberg P, Hemphälä J, Samakovlis C: **Dpp and Notch specify the fusion cell fate in the dorsal branches of the Drosophila trachea.** *Mech Dev* 1999, **87**:153-163.
19. Samakovlis C, Manning G, Steneberg P, Hacohen N, Cantera R, Krasnow MA: **Genetic control of epithelial tube fusion during Drosophila tracheal development.** *Development* 1996, **122**:3531-3536.
20. Sato M, Kornberg TB: **FGF is an essential mitogen and chemoattractant for the air sacs of the Drosophila tracheal system.** *Dev Cell* 2002, **3**:195-207.
21. Weaver M, Krasnow MA: **Dual origin of tissue-specific progenitor cells in Drosophila tracheal remodeling.** *Science* 2008, **321**:1496-1499.
22. Sternlicht M: **Key stages in mammary gland development: The cues that regulate ductal branching morphogenesis.** *Breast Cancer Res* 2006, **8**:201.
23. Hinck L, Silberstein G: **Key stages in mammary gland development: The mammary end bud as a motile organ.** *Breast Cancer Res* 2005, **7**:245-251.
24. Silberstein G: **Role of the stroma in mammary development.** *Breast Cancer Res* 2001, **3**:218-224.
25. Srinivasan K, Strickland P, Valdes A, Shin G, Hinck L: **Netrin-1/neogenin interaction stabilizes multipotent progenitor cap cells during mammary gland morphogenesis.** *Dev Cell* 2003, **4**:371-382.
26. Richert MM, Schwertfeger KL, Ryder JW, Anderson SM: **An atlas of mouse mammary gland development.** *J Mammary Gland Biol* 2000, **5**:227-241.
27. Silberstein G: **Postnatal mammary gland morphogenesis.** *Microsc Res Techniq* 2001, **52**:155-162.
28. Wiseman BS, Werb Z: **Stromal effects on mammary gland development and breast cancer.** *Science* 2002, **296**:1046-1049.
29. Nelson CM, Bissell MJ: **Of extracellular matrix, scaffolds, and signaling: tissue architecture regulates development, homeostasis, and cancer.** *Annu Rev Cell Dev Biol* 2006, **22**:287.
30. Ruan W, Kleinberg DL: **Insulin-like growth factor I is essential for terminal end bud formation and ductal morphogenesis during mammary development.** *Endocrinology* 1999, **140**:5075-5081.
31. Wiseman BS, Sternlicht MD, Lund LR, Alexander CM, Mott J, Bissell MJ, Soloway P, Itoharu S, Werb Z: **Site-specific inductive and inhibitory activities of MMP-2 and MMP-3 orchestrate mammary gland branching morphogenesis.** *J Cell Biol* 2003, **162**:1123-1133.
32. Gjorevski N, Nelson CM: **Endogenous patterns of mechanical stress are required for branching morphogenesis.** *Integr Biol* 2010, **2**:424-434.
33. Nelson CM, Jean RP, Tan JL, Liu WF, Sniadecki NJ, Spector AA, Chen CS: **Emergent patterns of growth controlled by multicellular form and mechanics.** *Proc Natl Acad Sci U S A* 2005, **102**:11594-11599.
34. Gomez EW, Chen QK, Gjorevski N, Nelson CM: **Tissue geometry patterns epithelial-mesenchymal transition via intercellular mechanotransduction.** *J Cell Biochem* 2010, **110**:44-51.
35. Lee K, Gjorevski N, Boghaert E, Radisky DC, Nelson CM: **Snail1, Snail2, and E47 promote mammary epithelial branching morphogenesis.** *EMBO J* 2011, **30**:2662-2674.
36. Moore KA, Polte T, Huang S, Shi B, Alsberg E, Sunday ME, Ingber DE: **Control of basement membrane remodeling and epithelial branching morphogenesis in embryonic lung by Rho and cytoskeletal tension.** *Dev Dynam* 2005, **232**:268-281.
37. Nelson CM, VanDuijn MM, Inman JL, Fletcher DA, Bissell MJ: **Tissue geometry determines sites of mammary branching morphogenesis in organotypic cultures.** *Science* 2006, **314**:298-300.
38. Pavlovich AL, Boghaert E, Nelson CM: **Mammary branch initiation and extension are inhibited by separate pathways downstream of TGFβ in culture.** *Exp Cell Res* 2011, **317**:1872-1884.
39. Stingl J, Eirew P, Ricketson I, Shackleton M, Vaillant F, Choi D, Li HI, Eaves CJ: **Purification and unique properties of mammary epithelial stem cells.** *Nature* 2006, **439**:993-997.
40. Shackleton M, Vaillant F, Simpson KJ, Stingl J, Smyth GK, Asselin-Labat M-L, Wu L, Lindeman GJ, Visvader JE: **Generation of a functional mammary gland from a single stem cell.** *Nature* 2006, **439**:84-88.
41. Zucchi I, Sanzone S, Astigiano S, Pelucchi P, Scotti M, Valsecchi V, Barbieri O, Bertoli G, Albertini A, Reinbold RA, Dulbecco R: **The properties of a mammary gland cancer stem cell.** *Proc Natl Acad Sci U S A* 2007, **104**:10476-10481.
42. Kordon EC, Smith GH: **An entire functional mammary gland may comprise the progeny from a single cell.** *Development* 1998, **125**:1921-1930.
43. Charafe-Jauffret E, Ginestier C, Iovino F, Wicinski J, Cervera N, Finetti P, Hur M-H, Diebel ME, Monville F, Dutcher J, Brown M, Viens P, Xerri L, Bertucci F, Stassi G, Dontu G, Birnbaum D, Wicha MS: **Breast cancer cell lines contain functional cancer stem cells with metastatic capacity and a distinct molecular signature.** *Cancer Res* 2009, **69**:1302-1313.
44. Mori H, Gjorevski N, Inman JL, Bissell MJ, Nelson CM: **Self-organization of engineered epithelial tubules by differential cellular motility.** *Proc Natl Acad Sci U S A* 2009, **106**:14890-14895.
45. Silberstein G, Daniel C: **Glycosaminoglycans in the basal lamina and extracellular matrix of the developing mouse mammary duct.** *Dev Biol* 1982, **90**:215-222.
46. Lui C, Lee K, Nelson C: **Matrix compliance and RhoA direct the differentiation of mammary progenitor cells.** *Biomech Model Mechanobiol* 2011. [Epub ahead of print]
47. Caussinus E, Colombelli J, Affolter M: **Tip-cell migration controls stalk-cell intercalation during Drosophila tracheal tube elongation.** *Curr Biol* 2008, **18**:1727-1734.
48. Shaye DD, Casanova J, Llimargas M: **Modulation of intracellular trafficking regulates cell intercalation in the Drosophila trachea.** *Nat Cell Biol* 2008, **10**:964-970.
49. Baum B, Georgiou M: **Dynamics of adherens junctions in epithelial establishment, maintenance, and remodeling.** *J Cell Biol* 2011, **192**:907-917.
50. Pavlovich AL, Manivannan S, Nelson CM: **Adipose stroma induces branching morphogenesis of engineered epithelial tubules.** *Tissue Eng Pt A* 2010, **16**:3719-3726.
51. Bhowmick NA, Neilson EG, Moses HL: **Stromal fibroblasts in cancer initiation and progression.** *Nature* 2004, **432**:332-337.

doi:10.1186/scrt133

Cite this article as: Manivannan S, Nelson CM: Dynamics of branched tissue assembly. *Stem Cell Research & Therapy* 2012, **3**:42.