

Discrepant Fibrinolytic Response in Plasma and Whole Blood during Experimental Endotoxemia in Healthy Volunteers

Sisse R. Ostrowski^{1*}, Ronan M. G. Berg², Nis A. Windeløv³, Martin A. S. Meyer¹, Ronni R. Plovsing⁴, Kirsten Møller^{2,5}, Pär I. Johansson^{1,6}

1 Section for Transfusion Medicine, Capital Region Blood Bank, Rigshospitalet, Copenhagen, Denmark, **2** Centre of Inflammation and Metabolism, Dept. of Infectious Diseases, Section M7641, Rigshospitalet, Copenhagen, Denmark, **3** Department of Anesthesia, Centre of Head and Orthopedics, Rigshospitalet, Copenhagen, Denmark, **4** Intensive Care Unit, Section 4131, Department of Anesthesia, Rigshospitalet, Copenhagen, Denmark, **5** Neurointensive Care Unit, Department of Neuroanesthesiology, Rigshospitalet, Copenhagen, Denmark, **6** Department of Surgery, Center for Translational Injury Research (CeTIR), University of Texas Medical School at Houston, Houston, Texas, United States of America

Abstract

Background: Sepsis induces early activation of coagulation and fibrinolysis followed by late fibrinolytic shutdown and progressive endothelial damage. The aim of the present study was to investigate and compare the functional hemostatic response in whole blood and plasma during experimental human endotoxemia by the platelet function analyzer, Multiplate and by standard and modified thrombelastography (TEG).

Methods: Prospective physiologic study of nine healthy male volunteers undergoing endotoxemia by means of a 4-hour infusion of *E. coli* lipopolysaccharide (LPS, 0.5 ng/kg/hour), with blood sampled at baseline and at 4 h and 6 h. Physiological and standard biochemical data and coagulation tests, TEG (whole blood: TEG, heparinase-TEG, Functional Fibrinogen; plasma: TEG±tissue-type plasminogen activator (tPA)) and Multiplate (TRAPtest, ADPtest, ASPItest, COLtest) were recorded. Mixed models with Tukey post hoc tests and correlations were applied.

Results: Endotoxemia induced acute SIRS with increased HR, temperature, WBC, CRP and procalcitonin and decreased blood pressure. It also induced a hemostatic response with platelet consumption and reduced APTT while INR increased (all $p < 0.05$). Platelet aggregation decreased (all tests, $p < 0.05$), whereas TEG whole blood clot firmness increased (G, $p = 0.05$). Furthermore, during endotoxemia (4 h), whole blood fibrinolysis increased (clot lysis time (CLT), $p < 0.001$) and Functional Fibrinogen clot strength decreased ($p = 0.049$). After endotoxemia (6 h), whole blood fibrinolysis was reduced (CLT, $p < 0.05$). In contrast to findings in whole blood, the plasma fibrin clot became progressively more resistant towards tPA-induced fibrinolysis at both 4 h and 6 h ($p < 0.001$).

Conclusions: Endotoxemia induced a hemostatic response with reduced primary but enhanced secondary hemostasis, enhanced early fibrinolysis and fibrinogen consumption followed by downregulation of fibrinolysis, with a discrepant fibrinolytic response in plasma and whole blood. The finding that blood cells are critically involved in the vasculo-fibrinolytic response to acute inflammation is important given that disturbances in the vascular system contribute significantly to morbidity and mortality in critically ill patients.

Citation: Ostrowski SR, Berg RMG, Windeløv NA, Meyer MAS, Plovsing RR, et al. (2013) Discrepant Fibrinolytic Response in Plasma and Whole Blood during Experimental Endotoxemia in Healthy Volunteers. PLoS ONE 8(3): e59368. doi:10.1371/journal.pone.0059368

Editor: Samir M. Parikh, Beth Israel Deaconess Medical Center, United States of America

Received: October 24, 2012; **Accepted:** February 13, 2013; **Published:** March 15, 2013

Copyright: © 2013 Ostrowski et al. This is an open-access article distributed under the terms of the Creative Commons Attribution License, which permits unrestricted use, distribution, and reproduction in any medium, provided the original author and source are credited.

Funding: The study was supported by The Foundation of Merchant Jakob Ehrenreich and Grete Ehrenreich, The Foundation of 1870, The Toyota Foundation, Christian Larsen and Judge Ella Larsen's grant, The Classen Trust Jubilee Foundation, The P. Carl Petersen Foundation, University Hospital Rigshospitalet, and the Faculty of Health Sciences, University of Copenhagen. The study was further supported by the Danish Council for Independent Research – Medical Sciences, the Commission of the European Communities (grant agreement number 223576 – MYOAGE). CIM is part of the UNIK Project: Food, Fitness & Pharma for Health and Disease, supported by the Danish Ministry of Science, Technology, and Innovation. CIM is a member of DD2 – the Danish Center for Strategic Research in Type 2 Diabetes (the Danish Council for Strategic Research, grant number 09-067009 and 09-075724). The funders had no role in study design, data collection and analysis, decision to publish, or preparation of the manuscript.

Competing Interests: The authors have declared that no competing interests exist.

* E-mail: sisse.ostrowski@gmail.com

Introduction

Experimental human endotoxemia induced by intravenous administration of purified standard reference lipopolysaccharide (LPS) to healthy volunteers induces an acute systemic inflammatory response, which mimics the inflammatory response of early

sepsis as well as other acute inflammatory conditions [1–3]. Sepsis is associated with initial activation of coagulation and fibrinolysis followed by late fibrinolytic shutdown and exhaustion of the natural anticoagulant systems [4], the latter mainly due to progressive endothelial disruption and damage [5,6]. Conventional coagulation tests like activated partial thromboplastin time

(APTT), international normalized ratio (INR), platelet count, plasma fibrinogen and D-dimer neither reveal (changes in) fibrinolysis nor platelet (dys)function, both of which may contribute significantly to hyper- and hypocoagulability in critically ill patients. However, viscoelastic hemostatic whole blood tests, such as Thrombelastography (TEG[®], Hemoscope–Hemometrics, Niles, IL, US) and Rotation Thromboelastometry (ROTEM[®], TEM Inc., Durham, NC, US) [7] as well as platelet function tests, such as light transmission aggregometry and whole blood platelet function tests (e.g. Multiple Platelet function Analyzer; Multiplate[®], Verum Diagnostica GmbH, Munich, Germany) [8] reveal both fibrinolysis and platelet function. Several studies have characterized the coagulopathy in sepsis [9–22] and experimental human [23,24] and animal [25–29] endotoxemia by these tests.

In addition to fibrinolytic changes and platelet dysfunction, degradation of the endothelial glycocalyx may, through release of large amounts of heparin-like substances [30,31], induce endogenous heparinization that contributes to hypocoagulability in septic patients [32–37], and we recently reported similar findings in severely injured trauma patients [38].

Excessive sympathoadrenal activation is a hallmark of acute critical illness and the accompanying increase in circulating catecholamines induces widespread dose-dependent effects on metabolism and the vascular system [39–41]. Apparently, catecholamines induce opposite directed effects on the endothelium (progressive activation and damage) [42–44] and circulating blood (initial hypercoagulability followed by progressive hypocoagulability, hyperfibrinolysis and endogenous heparinization) [38,42,45–49] and we infer that this reflects an evolutionary adapted response aiming at maintaining blood flow through a damaged and procoagulant microvasculature in the (shocked) critically ill patient [42]. Similarly to the opposite directed effects of catecholamines on the vascular endothelium and circulating blood [38,42–49], the cells and fluid that constitutes the fluid phase of the vascular system i.e., the circulating blood, may also respond in opposite directions in acute inflammatory conditions in order to maintain homeostasis in the vascular system. In vitro studies of platelet function in sepsis and experimental endotoxemia have revealed that addition of septic plasma to control platelets can induce a pathologic response [28,50], and that removal of septic plasma from patient platelets can restore platelet function [28]. Also, fibrinolytic activity may both be enhanced and inhibited by circulating blood cells and cell-derived microparticles [51–55]. Thus, platelets protect the clot against tissue-type plasminogen activator (tPA)-induced fibrinolysis [51] and enhance the antifibrinolytic effect of exogenous FXIII in vitro [52] and red blood cells confer lytic resistance to fibrin resulting from modified fibrin structure and impaired plasminogen activation [56]. In contrast, other blood and endothelial cells, and their derived microparticles, promote fibrinolysis through the action of cell-associated urokinase-type plasminogen activator (uPA) and tPA [53–55] and leukocytes promote fibrinolysis through various alternative pathways [57]. Together, this emphasizes that platelets and other blood cells are critically involved in balancing the vaso-fibrinolytic response, which may contribute to discrepant findings when evaluating fibrinolysis in plasma and whole blood. Given that sepsis and other acute inflammatory conditions are characterized by excessive changes in hemostasis and the vascular system that may be differently driven by and detected in whole blood and plasma, improved understanding and characterization of this response is of critical importance for optimizing and potentially goal-directing therapy.

The primary aim of the present study was to investigate and compare the functional hemostatic response in whole blood and plasma during experimental human endotoxemia as evaluated by Multiplate and by standard and modified TEG analyses, respectively. We expected that endotoxemia would induce a hemostatic response comparable to that previously described [23,24] and given the role of blood cells for fibrinolysis [51–55], we hypothesized that fibrinolytic activity during endotoxemia would differ in plasma and whole blood.

Here we report that experimental endotoxemia by means of a 4-hour 0.5 ng/kg/hour LPS-infusion in healthy volunteers induced a hemostatic response with reduced primary but enhanced secondary hemostasis, enhanced early fibrinolysis and fibrinogen consumption followed by downregulation of fibrinolysis, with a discrepant fibrinolytic response in plasma and whole blood. Our findings indicate a critical role of platelets and/or other blood cells in the vaso-fibrinolytic response to acute inflammation. The finding here that platelets and other blood cells, not present in plasma, may enhance fibrinolysis in acute inflammatory conditions is important given that especially thrombocytopenia is a strong predictor of poor outcome including excessive non-bleeding mortality in critically ill patients [58–63]. Since thrombocytopenia in septic patients often coexists with bleeding and excessive thrombus formation, or even overt disseminated intravascular coagulation (DIC) [59], it is tempting to speculate that thrombocytopenia may directly contribute to tip the hemostatic balance in the circulating blood towards a reduction in fibrinolysis and thereby paradoxically contribute to enhanced thrombus formation in the microvasculature.

Materials and Methods

Experimental human endotoxemia

The study was approved by the Scientific Ethical Committee of Copenhagen and Frederiksberg Municipalities, Denmark (file number H-A-2009-020 with amendments) and The Danish Data Protection Agency and was performed in accordance with the Declaration of Helsinki.

Nine healthy male volunteers (mean \pm SD age 23 \pm 2 years) were enrolled after giving oral and written informed consent. All had an unremarkable medical history without signs of infection within 4 weeks ahead of the trial day and none took any regular medication. Before inclusion, volunteers underwent a thorough physical examination, a 12-lead electrocardiogram (ECG) was obtained and standard laboratory tests were performed. All tests were normal.

Endotoxemia: Following 12-hour overnight fast volunteers reported to the intensive care unit (ICU) at 7:30 am and were placed in bed. They were catheterized with an intravenous antecubital catheter (for LPS-infusion) and following local anesthesia (lidocaine, 20 mg/ml) an arterial line was inserted in the left radial artery. Heart rate (via a three-lead ECG), invasive blood pressure (mean arterial pressure, MAP) and peripheral oxygen saturation (SpO₂, by pulse oximetry) were continuously monitored and medically qualified personnel were present at all times. Experimental endotoxemia was induced by means of a 4-hour continuous intravenous infusion of purified *Escherichia coli* LPS (infusion rate 0.5 ng/kg/hour; Batch G2 B274, US Pharmacopeial Convention, Rockville, Maryland, US). In this model, plasma tumor necrosis factor (TNF)- α reaches its peak value at approximately 1 hour after cessation of the infusion [3,64]. As part of another sub-study, which investigated cerebral auto regulation (data reported elsewhere), noradrenaline was infused immediately after blood samples had been collected at baseline and 4 h as

previously described [65]. Given the short in vivo half-life of noradrenaline ($t_{1/2} = 2.5$ min in healthy individuals [66]) this drug could be assumed to be completely metabolized at the following blood sample time-points.

Blood was sampled for routine biochemistry and functional hemostatic measurements (TEG, Multiplate) at 0 h, 4 h and 6 h where 0 h denotes the time when LPS-infusion was initiated; thus 4 h corresponds to the cessation of the infusion (denoted “during endotoxemia”) and 6 h is two hours after cessation. Volunteers were allowed to drink tap water ad libitum during the study day. They were discharged after 12 hours following removal of catheters and a light meal. According to the Danish Legislation, volunteers were not allowed payment alone for their attendance in the study. However, they were compensated for the loss of earnings and for any pain and suffering associated with the study.

Blood samples and routine biochemistry

Blood was sampled from the radial artery catheter, to mimic the conditions under which blood is often sampled in the critically ill patient. Routine biochemistry were analyzed in a DS/EN ISO 15189 standardized laboratory as follows: Blood cell counts (XE-2100, Sysmex, Japan), C-reactive protein (CRP) (Modular P-modul, Roche, Switzerland), procalcitonin (IMFA, Kryptor, Immulite), D-dimer, fibrinogen, enzymatic active antithrombin (AT), activated partial thromboplastin time (APTT), international normalized ratio (INR) and coagulation factor II-VII-X (ACL TOP, Beckman Coulter, Inc., CA, US), ABG and lactate (Radiometer ABL 725/735, Copenhagen, Denmark).

Multiplate

Platelet aggregation in heparinized whole blood was analyzed by impedance aggregometry using a Multiple Platelet function Analyzer (Multiplate[®] analyzer, Dynabyte GmbH), applying commercially available platelet agonists, according to the manufacturers recommendations [normal range reported by Dynabyte GmbH]: TRAPtest (thrombin-receptor activating peptide (TRAP)-6 32 μ M [92–151 U]), ADPtest (ADP 6.5 μ M [55–117 U]), ASPItest (arachidonic acid 0.5 mM [79–141 U]) and COLtest (collagen 3.2 μ g/ml [61–108 U]). Results of each test were recorded as aggregation units (U) or as U per platelet (U/ 10^9 platelets, U divided by platelet count).

Thrombelastography (TEG)

TEG whole blood clot formation was evaluated simultaneously in 3.2% citrated blood samples by kaolin-activated (TEG), kaolin-heparinase-activated (heparinase-TEG) and tissue-factor (TF)-activated platelet-blocked (TEG Functional Fibrinogen[®], FF) analyses by a TEG[®] 5000 Hemostasis Analyzer System (Haemonetics Corp., MA, US), according to the manufacturers recommendations. All analyses were conducted at 37°C. The simultaneous TEG and heparinase-TEG analysis allowed investigation of endogenous heparinization as previously described [38] and the FF analysis allowed investigation of fibrinogen contribution to TEG clot strength. The variables recorded were [normal TEG range reported by Haemonetics Corp.]: Reaction time (R [3–8 min], rate of initial fibrin formation), angle (α [55–78 degrees], clot growth kinetics), clot strength (maximum amplitude (MA) [51–69 mm], maximum clot strength; shear elastic modulus strength G [4,600–10,900 dyn/cm²], global clot strength; FF MA [14–24 mm], fibrinogen clot strength) and fibrinolysis (clot lysis time (CLT [min], velocity of clot degradation reflecting fibrinolysis; Ly30/60 (%), percent lysis 30/60 min after MA)[7]. To estimate platelet contribution to clot strength (MA) we calculated platelet MA (mm) by subtracting FF MA from TEG

MA, with results reported as crude platelet MA and platelet MA per platelet (mm/ 10^9 platelets, platelet MA divided by platelet count).

The day-to-day coefficient of variation of whole blood TEG MA is <7% in our laboratory [67].

In addition, the clotting potential of citrated plasma i.e., the capacity for formation of a pure fibrin clot was investigated by TEG[®]. Briefly, citrated plasma samples were thawed from -80°C just before analysis and 340 μ l plasma was recalcified (20 μ l 0.2 M CaCl_2 , final concentration 11.1 mM) and activated with TF (lipidated recombinant human TF, Innovin, Dade Behring, Marburg, Germany; final dilution 1:42,500) and analyzed immediately at 37°C. To assess the clot resistance to fibrinolysis, citrated plasma samples were analyzed with or without addition of 1.8 nM tissue-type plasminogen activator (tPA, single-chain, American Diagnostica, Greenwich, US) as previously described [67]. The TEG variables described above were recorded.

Statistics

Statistical analysis was performed using SAS 9.1 (SAS Institute Inc., Cary, NC, US). Data from volunteers were investigated by repeated-measures (RM) analyses (PROC MIXED, autoregressive covariance structure, SAS) and Tukey post hoc tests. Goodness of fit of the mixed model was assessed by investigating the residuals. Correlations between variables were investigated by Pearson correlations, and reported by R and p-values. Data are presented as means \pm SD. P-values <0.05 were considered significant.

Results

Physiology, inflammation and routine coagulation tests

Endotoxemia induced a systemic inflammatory response syndrome (SIRS) as indicated by increased HR, temperature and white blood cell count and decreased MAP (Table 1). Furthermore, lymphocyte and monocyte counts decreased while CRP and procalcitonin increased. With regard to routine coagulation tests, platelet count, APTT and factor II, VII and X decreased and INR increased whereas plasma fibrinogen, D-dimer and antithrombin did not change (Table 1).

Hemostatic response in whole blood

Endotoxemia induced a decline in primary hemostasis (platelet adhesion and aggregation) as evaluated by Multiplate[®] TRAPtest, ADPtest, ASPItest and COLtest and it significantly reduced the per platelet response in the TRAPtest (Table 2).

Secondary hemostasis (fibrin-platelet clot formation in whole blood) also changed during and after endotoxemia as evaluated by standard and modified TEG[®] analysis (representative profiles displayed in Figure 1): TEG R-time decreased, G increased and CLT decreased during endotoxemia, indicating combined increases in coagulation factor activity, clot strength and clot lysis, respectively. In contrast, Functional Fibrinogen (whole blood, blocked platelet GPIIb/IIIa receptors) MA decreased after endotoxemia indicating reduced fibrinogen level and fibrin clot strength.

The calculated platelet contribution to TEG MA (platelet MA) increased during endotoxemia ($p = 0.006$) from 41 ± 5 mm at baseline (0 h) to 47 ± 5 mm at 4 h and 46 ± 2 mm at 6 h (both $p < 0.05$ compared to 0 h), probably explaining the discrepant increase in TEG MA and decline in FF MA (Table 2). Since platelet count decreased during endotoxemia, the platelet MA per platelet also increased ($p < 0.001$) from 0.19 ± 0.04 mm/ 10^9 platelets at baseline (0 h) to 0.25 ± 0.04 mm/ 10^9 platelets at 4 h

Table 1. Physiology and standard biochemistry in nine healthy volunteers before (0 h), during (4 h) and after (6 h) induction of experimental endotoxemia by means of a 4 h 0.5 ng/kg/hour LPS-infusion.

	Units	Endotoxemia (n = 9)			RM p-value	Tukey
		0 h	4 h	6 h		
Physiology						
HR	bpm	58±7	94±7	97±15	<0.001	a,b
MAP	mmHg	92±7	78±9	86±14	0.020	a
SpO ₂	%	0.98±0.00	0.97±0.01	0.97±0.01	0.090	
Temperature	°C	36.6±0.3	39.0±0.3	38.6±0.3	<0.001	a,b
SBE	mmol/l	1.1±1.1	0.3±1.2	0.8±1.3	0.003	a
pH		7.41±0.02	7.45±0.03	7.45±0.01	<0.001	a,b
Lactate	mmol/l	0.9±0.4	1.0±0.4	1.0±0.2	0.049	b
Inflammation						
WBC	10 ⁹ /l	5.4±0.9	6.8±3.0	12.4±2.7	<0.001	b,c
Neutrophils	10 ⁹ /l	3.1±0.9	6.1±2.8	11.7±2.5	<0.001	a,b,c
Progenitor cells	10 ⁹ /l	0.014±0.005	0.017±0.011	0.040±0.017	<0.001	b,c
Lymphocytes	10 ⁹ /l	1.7±0.5	0.6±0.3	0.4±0.1	<0.001	a,b
Monocytes	10 ⁹ /l	0.42±0.11	0.05±0.03	0.29±0.17	<0.001	a,c
CRP	mg/l	1.1±0.3	1.3±0.6	2.2±1.1	0.012	b
Procalcitonin	µg/l	0.1±0.0	ND	6.2±3.1	<0.001	b
Hemoglobin	mmol/l	8.9±0.7	8.8±0.7	8.9±0.7	NS	
Routine coagulation						
Platelets	10 ⁹ /l	218±35	188±32	177±31	<0.001	a,b
Fibrinogen	g/l	2.0±0.2	2.0±0.2	2.0±0.2	NS	
D-dimer	mg/l	0.2±0.1	2.8±4.7	1.5±1.2	0.162	
AT	10 ³ IU	1.02±0.07	0.99±0.06	1.01±0.07	0.102	
APTT	Sec	30±4	23±2	23±2	<0.001	a,b
INR	Ratio	1.1±0.1	1.2±0.1	1.2±0.1	<0.001	a,b
Factor II-VII-X	U	0.8±0.1	0.7±0.1	0.7±0.1	<0.001	a,b

Data are presented as means±SD. Data from volunteers were compared by repeated-measures analyses (RM) and Tukey post hoc tests: p<0.05 for 0 h vs. 4 h^a, 0 h vs. 6 h^b and 4 h vs. 6 h^c. P-values <0.2 are shown and in bold if p<0.05.

HR, heart rate; MAP, mean arterial blood pressure; SpO₂, peripheral oxygen saturation; SBE, standard base excess; WBC, white blood cells; CRP, c-reactive protein; AT, antithrombin; APTT, activated partial thromboplastin time; INR, international normalized ratio. NS, non-significant; ND, not done.

doi:10.1371/journal.pone.0059368.t001

and 0.27±0.05 mm/10⁹ platelets at 6 h (both p<0.001 compared to 0 h).

There was no evidence of endogenous heparinization as evaluated by the difference between TEG and heparinase-TEG (TEG minus heparinase-TEG) [38]: delta R at 4 h -0.1±0.2 and 6 h 0.4±1.2; delta angle at 4 h -0.5±3.9 and 6 h 0.3±8.3; delta MA at 4 h -3.0±5.4 and 6 h -4.4±4.0 (all non-significantly different from zero indicating that TEG and heparinase-TEG were comparable).

Hemostatic response in plasma

In contrast to the findings in whole blood, TEG Angle increased and TEG+tPA MA and G increased in plasma during and after endotoxemia indicating increased clot velocity and strength/firmness, respectively (Table 2). Furthermore, plasma TEG+tPA Ly30/60 decreased considerably whereas CLT increased during and after endotoxemia, indicating increased resistance towards the tPA-induced in vitro clot lysis (Figure 1 and Table 2).

Correlations between plasma fibrinogen, platelet count and TEG MA

The main determinants of TEG/ROTEM clot strength are fibrinogen and platelets (in addition to FXIII which we did not measure) [68–71]; we therefore investigated correlations between these variables and TEG MA during endotoxemia. At baseline, fibrinogen correlated significantly positively with TEG MA (r = 0.83, p = 0.006) whereas platelets did not (r = 0.14, p = NS). However, during (4 h) and after (6 h) endotoxemia, the contribution of fibrinogen to TEG MA decreased and became non-significant (r = 0.32 and r = 0.25, both p = NS) whereas the contribution of platelets to TEG MA increased non-significantly at 4 h (r = 0.55, p = 0.128), indicating increased platelet reactivity in the context of declining platelet count. After endotoxemia (6 h), TEG MA and platelet count did not correlate significantly (r = 0.18, p = NS).

Discussion

The main finding of the present study was that experimental endotoxemia, along with induction of SIRS, resulted in a

Table 2. Functional hemostatic assays in whole-blood (impedance aggregometry (Multiplate), Thrombelastography (TEG), Functional fibrinogen) and plasma (TEG with or without addition of tPA to induce fibrinolysis) in nine healthy volunteers before, during and after induction of experimental endotoxemia by means of a 4 h LPS-infusion (0.5 ng/kg/hour).

		Endotoxemia (n = 9)			RM p-value	Tukey
	Units	0 h	4 h	6 h		
Multiplate						
TRAPtest	U	125±24	85±19	89±21	<0.001	a,b
	U/platelet	0.59±0.15	0.45±0.08	0.51±0.11	0.008	a
ADPtest	U	79±15	57±12	55±10	<0.001	a,b
	U/platelet	0.37±0.10	0.30±0.04	0.32±0.06	0.064	
ASPItest	U	93±16	73±17	82±13	0.028	a
	U/platelet	0.42±0.10	0.37±0.07	0.45±0.04	0.117	
COLtest	U	84±14	64±14	70±13	<0.001	a,b
	U/platelet	0.40±0.10	0.34±0.04	0.40±0.06	0.060	
Whole blood TEG						
R	min	8.6±2.4	5.5±1.2	6.7±2.0	0.003	a
Angle	degrees	57±6	62±7	58±10	NS	
MA	mm	54±6	59±5	58±3	0.084	
G	dyn/cm ²	6,010±1,232	7,229±1,487	6,928±934	0.050	a
LY30	%	0.7±0.8	0.7±1.1	0.8±1.1	NS	
LY60	%	3.5±2.6	3.7±2.9	4.3±3.7	NS	
CLT	min	136±38	71±16	151±5	<0.001	a,c
Whole blood Functional Fibrinogen						
R	min	5.6±1.2	5.2±1.3	5.7±1.5	NS	
Angle	degrees	29±8	32±9	32±11	NS	
MA	mm	14±2	12±2	12±3	0.049	a
G	dyn/cm ²	787±151	688±157	671±210	0.051	
LY30	%	0±0	0±0	0±0	NS	
LY60	%	0±0	0±0	0±0	NS	
CLT	min	120±62	80±18	237±221	0.067	
Plasma TEG						
R	min	6.3±1.8	5.6±0.9	5.3±0.3	0.137	
Angle	degrees	45±13	52±8	56±7	0.013	a,b
MA	mm	19±3	19±3	20±3	0.151	
G	dyn/cm ²	1,162±221	1,172±217	1,250±245	0.149	
LY30	%	0±0	0±0	0±0	NS	
LY60	%	0±0	0±0	0±0	NS	
CLT	min	124±36	117±40	114±40	NS	
Plasma TEG +tPA						
R _{tPA}	min	6.2±2.1	5.6±0.8	5.1±0.5	0.178	
Angle _{tPA}	degrees	44±14	53±8	57±6	0.011	a,b
MA _{tPA}	mm	14±4	16±3	19±3	<0.001	a,b,c
G _{tPA}	dyn/cm ²	798±249	978±200	1,165±216	<0.001	a,b,c
LY30 _{tPA}	%	51.1±26.2	25.2±29.0	0.1±0.4	<0.001	a,b,c
LY60 _{tPA}	%	73.5±16.2	43.6±36.5	3.2±9.2	<0.001	a,b,c
CLT _{tPA}	min	26±14	68±58	117±40	<0.001	a,b,c

Data are presented as means±SD. Data from volunteers were compared by repeated-measures analyses (RM) and Tukey post hoc tests: p<0.05 for 0 h vs. 4 h^a, 0h vs. 6 h^b and 4 h vs. 6 h^c. P-values <0.2 are shown and in bold if p<0.05.

Different platelet agonists were applied in the Multiplate tests: TRAPtest, thrombin-receptor activating peptide; ADPtest, ADP; COLtest, collagen; ASPItest, arachidonic acid; TEG, thrombelastography; R, reaction time; Angle, α angle; MA, maximum amplitude; G, shear elastic modulus strength; CLT, clot lysis time; Ly30/60, percent lysis 30/60 min after MA;

tPA, tissue-type plasminogen activator. NS, non-significant.

doi:10.1371/journal.pone.0059368.t002

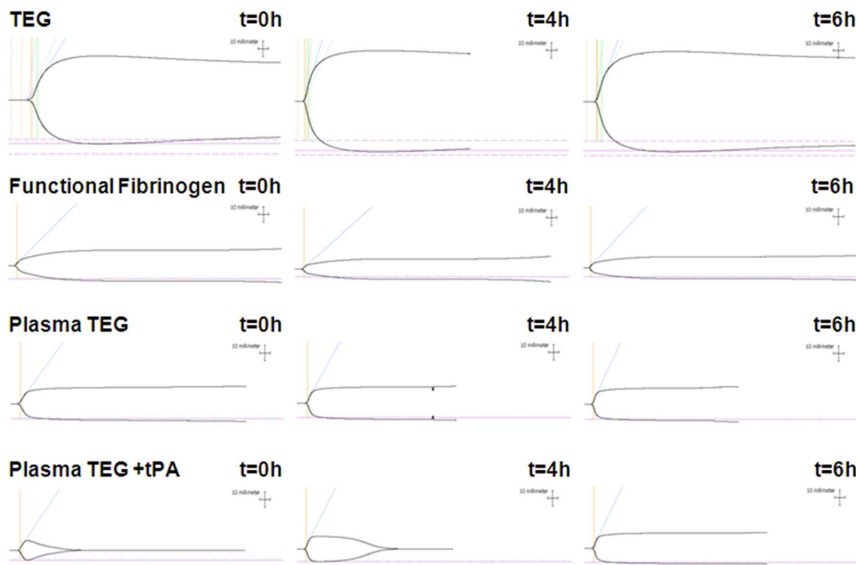


Figure 1. Representative profiles of TEG and modified TEG analyses in healthy volunteers before (t=0), during (t=4 h) and after (t=6 h) experimental endotoxemia induced by a 4-hour continuous intravenous infusion of purified *Escherichia coli* LPS (infusion rate 0.5 ng/kg/hour). TEG and Functional Fibrinogen were analyzed in whole blood whereas plasma TEG was analyzed in plasma with or without addition of 1.8 nM tPA to induce lysis of the clot i.e., allowing extended evaluation of clot resistance to fibrinolysis.
doi:10.1371/journal.pone.0059368.g001

hemostatic response in whole blood with reduced primary but enhanced secondary hemostasis, enhanced early fibrinolysis and fibrinogen consumption followed by inhibition of fibrinolysis. In plasma, however, endotoxemia resulted in a progressive increase in clot resistance towards tPA-induced fibrinolysis indicating that the early LPS/inflammation-induced increase in fibrinolytic activity may be mediated by cellular elements in the whole blood.

Sepsis is associated with vascular dysfunction and coagulopathy that may progress from an initially normal coagulation profile to hypercoagulability, hyperfibrinolysis and ultimately hypocoagulability with increasing disease severity [11–13,18]. This has been documented by TEG/ROTEM and has been reproduced in studies using experimental human [23] and animal [25–27] models of endotoxemia [23,25–27]. Also, platelet aggregation is profoundly reduced in septic patients [19–22] and decreases with disease severity [20–22], which has also been reproduced in experimental human [23,24] and animal [28,29] models of endotoxemia.

In the present study, experimental endotoxemia, by means of a 4-hour infusion of 0.5 ng/kg/hour LPS, reduced primary hemostasis (platelet aggregation, reduced by Multiplate) and enhanced secondary hemostasis (clot formation) in whole blood (reduced R time (enhanced coagulation initiation) and increased G (enhanced clot strength) at 4 h by TEG) in accordance with previous findings [23–25,27–29]. During endotoxemia, fibrinolysis was enhanced (increased breakdown of the platelet-fibrin clot, CLT reduced at 4 h by TEG), which probably explains the observed reduction in the functional fibrinogen level (reduced strength of the fibrin clot, MA reduced at 4 h by FF). However, after endotoxemia, fibrinolysis was inhibited (increased CLT at 6 h by TEG), in accordance with previous findings in human [23] and animal [25] studies of experimental endotoxemia.

In contrast to the reduction in platelet aggregation, platelet clot formation increased (the pure contribution of platelets to TEG clot strength, platelet MA increased at 4 h and 6 h) both in total and on a per platelet basis (i.e. each platelet became more reactive), in

accordance with the notion that the platelet fibrinogen receptor activity (GPIIb/IIIa) is enhanced in early sepsis [50].

Given that thrombosis may represent a critical component of innate immunity [72], the hemostatic changes observed in response to endotoxemia probably reflect part of a coordinated immune response. Thus, there is emerging evidence that platelet function goes far beyond hemostasis and that platelets are critically involved in and modulators of host defense and immune function [73–76]. Hence, Yaguchi and colleagues [21] suggested almost 10 years ago that sepsis induces a redistribution of platelet function from hemostasis toward other functions like e.g. vascular healing. We recently reported of an association between excessive sympathoadrenal activation and reduced hemostatic function of platelets in trauma patients [77,78] suggesting that catecholamines may promote a switch in platelet function from hemostasis to e.g. immunomodulation [42,76]. We infer that the change in hemostatic platelet function in critical illness may serve to sustain platelet circulation (avoiding consumption), thereby allowing platelets to exert other functions like e.g., vascular healing [21] and immunomodulation [76].

The oppositely directed responses in primary and secondary hemostasis observed in the present study probably reflect that we investigated an early hemostatic response to acute inflammation, in which it is well documented that secondary hemostasis is enhanced rather than reduced [11–13,23,25,27].

In contrast to the early increase (4 h) in and later downregulation (6 h) of fibrinolysis observed in whole blood by TEG, the resistance of the fibrin clot towards tPA-induced fibrinolysis increased progressively both during (4 h) and after (6 h) endotoxemia. This discrepancy indicates that blood cells and/or blood cell-derived microparticles and/or molecules enhance fibrinolysis in acute inflammation in accordance with the notion that inflammatory and endothelial cells and their derived microparticles can promote fibrinolysis [53–55]. Though platelets in some studies have been reported to enhance clot resistance towards fibrinolysis [51] it cannot be excluded that platelets under conditions characterized by systemic inflammation accompanied

by endothelial activation and damage may change their phenotype towards a more pro-fibrinolytic one to avoid clot formation in the microvasculature thereby ensuring adequate organ perfusion. Given that degranulation of platelets is a highly regulated process [79,80], it is also tempting to speculate that thrombocytopenia, depending on the context, may both enhance and reduce fibrinolysis. Besides platelets, other blood cells, leukocytes in particular, may also through mechanisms such as release of neutrophil elastase, enhance fibrinolysis and thereby contribute to a discrepant response in plasma and whole blood [57]. Finally, this discrepancy emphasizes the importance of evaluating hemostasis in whole blood, opposite plasma, while also taking the concurrent state of the vascular endothelium (pro- vs. anticoagulant) into account since the states of the fluid (circulating blood) and solid (endothelium) phases of the vascular system may, from a systems biology perspective, counterbalance each other [42]. Thus, in conditions with systemic inflammation and/or coagulation activation, progressive hypocoagulability and fibrinolysis of the circulating blood may serve to keep a progressively more damaged and procoagulant microvasculature open in order to maintain perfusion of critical organs [42]. This notion is in accordance with the progressive hypocoagulability and fibrinolysis reported in septic patients [11–13,18] and it also agrees with the finding of hyperfibrinolysis in trauma [77,81–90], cardiac arrest [91] and major surgical [92] patients and with the finding of enhanced protein C activation in patients with septic shock [93], during the reperfusion phase after cardio pulmonary bypass [94] and in cardiac arrest [95] or severely injured [77] patients. Despite thrombosis being a critical player in innate immunity [72], it is notable that several of the endothelial derived molecules that promote hypocoagulability exert potent antiinflammatory and cytoprotective functions [96–99] that may ultimately generate at survival advantage in critically ill patients.

We found no evidence to suggest that endotoxemia induces endogenous heparinization. This contrasts previous findings in septic [32–37] and trauma [38] patients. This discrepancy is likely explained by the presence of endothelial damage and hence glycocalyx degradation in patients with severe sepsis [5,6,100], which cannot be reproduced in human experimental endotoxemia since the LPS-doses required to mimic severe sepsis with regard to

endothelial damage and/or organ dysfunction are unsafe and ethically unacceptable [1–3].

The present study has several limitations. Firstly, only young male volunteers were investigated in the experimental part and consequently a possible age and/or gender difference in response to endotoxemia was not evaluated. Furthermore, the low number of volunteers investigated increases the risk of introducing both type I and II errors, emphasizing that the findings herein should be confirmed in a larger studies. Finally, though the administered noradrenaline infusion [65] was assumed completely metabolized before blood sampling [66], it cannot be excluded that the infused noradrenaline influenced platelet number and function as catecholamines including noradrenaline influence both platelet adhesion and activation [45].

In conclusion, induction of experimental endotoxemia by means of a 4-hour LPS-infusion at 0.5 ng/kg/hour induced a hemostatic response comparable to that observed in early sepsis, with reduced primary but enhanced secondary hemostasis, enhanced early fibrinolysis and fibrinogen consumption followed by downregulation of fibrinolysis. In plasma, however, endotoxemia resulted in a progressive increase in clot resistance towards tPA-induced fibrinolysis. We infer that the discrepant fibrinolytic response observed in plasma and whole blood reflects a critical role of platelets and/or other blood cells in the vasculo-fibrinolytic response to acute inflammation in accordance with the finding here of significantly altered platelet function in response to endotoxemia.

Acknowledgments

Karen Dyeremose and Marie Helena Andersson are thanked for the skilled technical assistance.

Author Contributions

Revised the manuscript critically: RMGB NAW RRP MASM KM. Read and approved the final manuscript: SRO RMGB NAW RRP MASM KM PIJ. Conceived and designed the experiments: SRO RMGB KM PIJ. Performed the experiments: RMGB NAW RRP MASM. Analyzed the data: SRO PIJ. Contributed reagents/materials/analysis tools: SRO KM PIJ. Wrote the paper: SRO PIJ.

References

1. Esmon CT (2004) Why do animal models (sometimes) fail to mimic human sepsis? *Crit Care Med* 32:S219–S222.
2. Rittirsch D, Hoedel LM, Ward PA (2007) The disconnect between animal models of sepsis and human sepsis. *J Leukoc Biol* 81:137–143.
3. Andreasen AS, Krabbe KS, Krogh-Madsen R, Taudorf S, Pedersen BK, et al. (2008) Human endotoxemia as a model of systemic inflammation. *Curr Med Chem* 15:1697–1705.
4. Schouten M, Wiersinga WJ, Levi M, van der PT (2008) Inflammation, endothelium, and coagulation in sepsis. *J Leukoc Biol* 83:536–545.
5. Faust SN, Levin M, Harrison OB, Goldin RD, Lockhart MS, et al. (2001) Dysfunction of endothelial protein C activation in severe meningococcal sepsis. *N Engl J Med* 345:408–416.
6. Ueno H, Hirasawa H, Oda S, Shiga H, Nakanishi K, et al. (2002) Coagulation/fibrinolysis abnormality and vascular endothelial damage in the pathogenesis of thrombocytopenic multiple organ failure. *Crit Care Med* 30:2242–2248.
7. Johansson PI, Stissing T, Bochsén L, Ostrowski SR (2009) Thrombelastography and tromboelastometry in assessing coagulopathy in trauma. *Scand J Trauma Resusc Emerg Med* 17:45.
8. Görlinger K, Jambor C, Hanke AA, Dirkmann D, Adamzik M, et al. (2007) Perioperative Coagulation Management and Control of Platelet Transfusion by Point-of-Care Platelet Function Analysis. *Transfus Med Hemother* 34:396–411.
9. Grant HW, Hadley GP (1997) Prediction of neonatal sepsis by thrombelastography. *Pediatr Surg Int* 12:289–292.
10. Collins PW, Macchiavello LI, Lewis SJ, Macartney NJ, Saayman AG, et al. (2006) Global tests of haemostasis in critically ill patients with severe sepsis syndrome compared to controls. *Br J Haematol* 135:220–227.
11. Gonano C, Sitzwohl C, Meitner E, Weinstabl C, Kettner SC (2006) Four-day antithrombin therapy does not seem to attenuate hypercoagulability in patients suffering from sepsis. *Crit Care* 10:R160.
12. Daudel F, Kessler U, Folly H, Lienert JS, Takala J, et al. (2009) Thromboelastometry for the assessment of coagulation abnormalities in early and established adult sepsis: a prospective cohort study. *Crit Care* 13:R42.
13. Sivula M, Pettila V, Niemi TT, Varpula M, Kuitunen AH (2009) Thromboelastometry in patients with severe sepsis and disseminated intravascular coagulation. *Blood Coagul Fibrinolysis* 20:419–426.
14. Johansson PI, Stensballe J, Vindelov N, Perner A, Espersen K (2010) Hypocoagulability, as evaluated by thrombelastography, at admission to the ICU is associated with increased 30-day mortality. *Blood Coagul Fibrinolysis* 21:168–174.
15. Sharma P, Saxena R (2010) A novel thromboelastographic score to identify overt disseminated intravascular coagulation resulting in a hypocoagulable state. *Am J Clin Pathol* 134:97–102.
16. Adamzik M, Eggmann M, Frey UH, Görlinger K, Brocker-Preuss M, et al. (2010) Comparison of thromboelastometry with procalcitonin, interleukin 6, and C-reactive protein as diagnostic tests for severe sepsis in critically ill adults. *Crit Care* 14:R178.
17. Adamzik M, Langemeier T, Frey UH, Görlinger K, Saner F, et al. (2011) Comparison of thrombelastometry with SAPS II and SOFA scores for the prediction of 30-day survival: a cohort study. *Shock* 35:339–342.
18. Ostrowski SR, Windelov NA, Ibsen M, Haase N, Perner A, et al. (2012) Consecutive thrombelastography clot strength profiles in patients with severe sepsis and their association with 28-day mortality: A prospective study. *J Crit Care*. Epub ahead of print.

19. Cowan DH, Bowman LS, Fratianne RB, Ahmed F (1976) Platelet aggregation as a sign of septicemia in thermal injury. A prospective study. *JAMA* 235:1230–1234.
20. Alt E, mann-Vesti BR, Madl C, Funk G, Koppensteiner R (2004) Platelet aggregation and blood rheology in severe sepsis/septic shock: relation to the Sepsis-related Organ Failure Assessment (SOFA) score. *Clin Hemorheol Microcirc* 30:107–115.
21. Yaguchi A, Lobo FL, Vincent JL, Pradier O (2004) Platelet function in sepsis. *J Thromb Haemost* 2:2096–2102.
22. Woth G, Varga A, Ghosh S, Krupp M, Kiss T, et al. (2011) Platelet aggregation in severe sepsis. *J Thromb Thrombolysis* 31:6–12.
23. Spiel AO, Mayr FB, Firbas C, Quehenberger P, Jilma B (2006) Validation of rotation thrombelastography in a model of systemic activation of fibrinolysis and coagulation in humans. *J Thromb Haemost* 4:411–416.
24. Spiel AO, Derhaschnig U, Schwameis M, Bartko J, Siller-Matula JM, et al. (2012) Effects of prasugrel on platelet inhibition during systemic endotoxemia: A randomized controlled trial. *Clin Sci (Lond)*.
25. Velik-Salchner C, Streif W, Innerhofer P, Maier S, Knotzer H, et al. (2009) Endotoxemia-induced changes in coagulation as measured by rotation thrombelastometry technique and conventional laboratory tests: results of a pilot study on pigs. *Blood Coagul Fibrinolysis* 20:41–46.
26. Eralp O, Yilmaz Z, Failing K, Moritz A, Bauer N (2011) Effect of experimental endotoxemia on thrombelastography parameters, secondary and tertiary hemostasis in dogs. *J Vet Intern Med* 25:524–531.
27. Tsai HJ, Tsao CM, Liao MH, Ka SM, Liaw WJ, et al. (2012) Application of thrombelastography in liver injury induced by endotoxin in rat. *Blood Coagul Fibrinolysis* 23:118–126.
28. Cicala C, Santacrose C, Itoh H, Douglas GJ, Page CP (1997) A study on rat platelet responsiveness following intravenous endotoxin administration. *Life Sci* 60:L31–L33.
29. Dong HP, Chunag IC, Wang DC, Huang LJ, Lee CI, et al. (2010) Lipopolysaccharide-stimulated leukocytes contribute to platelet aggregative dysfunction, which is attenuated by catalase in rats. *Kaohsiung J Med Sci* 26:584–592.
30. Becker BF, Chappell D, Bruegger D, Annecke T, Jacob M (2010) Therapeutic strategies targeting the endothelial glycocalyx: acute deficits, but great potential. *Cardiovasc Res* 87:300–310.
31. Reitsma S, Slaaf DW, Vink H, van Zandvoort MA, oude Egbrink MG (2007) The endothelial glycocalyx: composition, functions, and visualization. *Pflügers Arch* 454:345–359.
32. Rehm M, Bruegger D, Christ F, Conzen P, Thiel M, et al. (2007) Shedding of the endothelial glycocalyx in patients undergoing major vascular surgery with global and regional ischemia. *Circulation* 116:1896–1906.
33. Senzolo M, Coppell J, Cholongitas E, Riddell A, Triantos CK, et al. (2007) The effects of glycosaminoglycans on coagulation: a thromboelastographic study. *Blood Coagul Fibrinolysis* 18:227–236.
34. Zambruni A, Thalheimer U, Coppell J, Riddell A, Mancuso A, et al. (2004) Endogenous heparin-like activity detected by anti-Xa assay in infected cirrhotic and non-cirrhotic patients. *Scand J Gastroenterol* 39:830–836.
35. Agarwal S, Senzolo M, Melikian C, Burroughs A, Mallett SV (2008) The prevalence of a heparin-like effect shown on the thromboelastograph in patients undergoing liver transplantation. *Liver Transpl* 14:855–860.
36. Nelson A, Berkestedt I, Schmidtchen A, Ljunggren L, Bodelsson M (2008) Increased levels of glycosaminoglycans during septic shock: relation to mortality and the antibacterial actions of plasma. *Shock* 30:623–627.
37. Stepan J, Hofer S, Funke B, Brenner T, Henrich M, et al. (2011) Sepsis and Major Abdominal Surgery Lead to Flaking of the Endothelial Glycocalyx. *J Surg Res* 165:136–141.
38. Ostrowski SR, Johansson PI (2012) Endothelial glycocalyx degradation induces endogenous heparinization in patients with severe injury and early traumatic coagulopathy. *J Trauma Acute Care Surg* 73:60–66.
39. Cryer PE (1980) Physiology and pathophysiology of the human sympathoadrenal neuroendocrine system. *N Engl J Med* 303:436–444.
40. Dunser MW, Hasibeder WR (2009) Sympathetic overstimulation during critical illness: adverse effects of adrenergic stress. *J Intensive Care Med* 24:293–316.
41. Triposkiadis F, Karayannis G, Giamouzis G, Skoularigis J, Louridas G, et al. (2009) The sympathetic nervous system in heart failure physiology, pathophysiology, and clinical implications. *J Am Coll Cardiol* 54:1747–1762.
42. Johansson PI, Ostrowski SR (2010) Acute coagulopathy of trauma: Balancing progressive catecholamine induced endothelial activation and damage by fluid phase anticoagulation. *Med Hypotheses* 75:564–567.
43. Makhmudov RM, Mamedov Y, Dolgov VV, Repin VS (1985) Catecholamine-mediated injury to endothelium in rabbit perfused aorta: a quantitative analysis by scanning electron microscopy. *Cor Vasa* 27:456–463.
44. Kristova V, Kriska M, Canova R, Hejdova E, Kobzova D, et al. (1993) Endothelial changes following repeated effect of vasoconstrictive substances in vitro. *Acta Physiol Hung* 81:363–370.
45. von Kanel R, Dimsdale JE (2000) Effects of sympathetic activation by adrenergic infusions on hemostasis in vivo. *Eur J Haematol* 65:357–369.
46. Lowenstein CJ, Morrell CN, Yamakuchi M (2005) Regulation of Weibel-Palade body exocytosis. *Trends Cardiovasc Med* 15:302–308.
47. Hawkey CM, Britton BJ, Wood WG, Peele M, Irving MH (1975) Changes in blood catecholamine levels and blood coagulation and fibrinolytic activity in response to graded exercise in man. *Br J Haematol* 29:377–384.
48. Sefrin P (1987) Catecholamines in the serum of multiple trauma patients—mediators of ARDS? *Prog Clin Biol Res* 236:477–486.
49. van der PT, Levi M, Dentener M, Jansen PM, Coyle SM, et al. (1997) Epinephrine exerts anticoagulant effects during human endotoxemia. *J Exp Med* 185:1143–1148.
50. Gawaz M, Dickfeld T, Bogner C, Fatch-Moghadam S, Neumann FJ (1997) Platelet function in septic multiple organ dysfunction syndrome. *Intensive Care Med* 23:379–385.
51. Weisel JW (2007) Structure of fibrin: impact on clot stability. *J Thromb Haemost* 5 Suppl 1:116–24:116–124.
52. Dirkmann D, Gorlinger K, Gisbertz C, Dusse F, Peters J (2012) Factor XIII and Tranexamic Acid But Not Recombinant Factor VIIa Attenuate Tissue Plasminogen Activator-Induced Hyperfibrinolysis in Human Whole Blood. *Anesth Analg* 114:1182–1188.
53. Dejovencel T, Doeuve L, Lacroix R, Plawinski L, Dignat-George F, et al. (2010) Fibrinolytic cross-talk: a new mechanism for plasmin formation. *Blood* 115:2048–2056.
54. Lacroix R, Plawinski L, Robert S, Doeuve L, Sabatier F, et al. (2012) Leukocyte- and endothelial-derived microparticles: a circulating source for fibrinolysis. *Haematologica*.
55. Morel O, Toti F, Morel N, Freyssinet JM (2009) Microparticles in endothelial cell and vascular homeostasis: are they really noxious? *Haematologica* 94:313–317.
56. Wohner N, Sotonyi P, Machovich R, Szabo L, Tenekedjiev K, et al. (2011) Lytic resistance of fibrin containing red blood cells. *Arterioscler Thromb Vasc Biol* 31:2306–2313.
57. Gando S, Kameue T, Sawamura A, Hayakawa M, Hoshino H, et al. (2007) An alternative pathway for fibrinolysis is activated in patients who have undergone cardiopulmonary bypass surgery and major abdominal surgery. *Thromb Res* 120:87–93.
58. Bradbury AW, Bachoo P, Milne AA, Duncan JL (1995) Platelet count and the outcome of operation for ruptured abdominal aortic aneurysm. *J Vasc Surg* 21:484–491.
59. Levi M, Lowenberg EC (2008) Thrombocytopenia in critically ill patients. *Semin Thromb Hemost* 34:417–424.
60. Cotton BA, Au BK, Nunez TC, Gunter OL, Robertson AM, et al. (2009) Predefined massive transfusion protocols are associated with a reduction in organ failure and postinjury complications. *J Trauma* 66:41–48.
61. Salim A, Hadjizacharia P, DuBose J, Kobayashi L, Inaba K, et al. (2009) What is the significance of thrombocytosis in patients with trauma? *J Trauma* 66:1349–1354.
62. Nydam TL, Kashuk JL, Moore EE, Johnson JL, Burlew CC, et al. (2011) Refractory Postinjury Thrombocytopenia Is Associated With Multiple Organ Failure and Adverse Outcomes. *J Trauma* 70:401–407.
63. Brown LM, Call MS, Margaret KM, Cohen MJ, Holcomb JB, et al. (2011) A normal platelet count may not be enough: the impact of admission platelet count on mortality and transfusion in severely injured trauma patients. *J Trauma* 71:S337–S342.
64. Taudorf S, Krabbe KS, Berg RM, Pedersen BK, Moller K (2007) Human models of low-grade inflammation: bolus versus continuous infusion of endotoxin. *Clin Vaccine Immunol* 14:250–255.
65. Berg RM, Plovings RR, Ronit A, Bailey DM, Holstein-Rathlou NH, et al. (2012) Disassociation of Static and Dynamic Cerebral Autoregulatory Performance in Healthy Volunteers After Lipopolysaccharide Infusion and in Patients with Sepsis. *Am J Physiol Regul Integr Comp Physiol* 303:R1127–R1135.
66. Vendsalu A (1960) Studies on adrenaline and noradrenaline in human plasma. *Acta Physiol Scand Suppl* 49:1–123.
67. Johansson PI, Bochen L, Andersen S, Viuff D (2008) Investigation of the effect of kaolin and tissue factor-activated citrated whole blood, on clot forming variables, as evaluated by thromboelastography. *Transfusion* 48:2377–2383.
68. Chakroun T, Gerotziakas GT, Seghatchian J, Samama MM, Hatmi M, et al. (2006) The influence of fibrin polymerization and platelet-mediated contractile forces on citrated whole blood thromboelastography profile. *Thromb Haemost* 95:822–828.
69. Khurana S, Mattson JC, Westley S, O'Neill WW, Timmis GC, et al. (1997) Monitoring platelet glycoprotein IIb/IIIa-fibrin interaction with tissue factor-activated thromboelastography. *J Lab Clin Med* 130:401–411.
70. Nielsen VG, Cohen BM, Cohen E (2005) Effects of coagulation factor deficiency on plasma coagulation kinetics determined via thromboelastography: critical roles of fibrinogen and factors II, VII, X and XII. *Acta Anaesthesiol Scand* 49:222–231.
71. Johansson PI, Jacobsen N, Viuff D, Olsen EH, Rojkaer R, et al. (2008) Differential clot stabilising effects of rFVIIa and rFXIII-A in whole blood from thrombocytopenic patients and healthy volunteers. *Br J Haematol* 143:559–569.
72. Engelmann B, Massberg S (2013) Thrombosis as an intravascular effector of innate immunity. *Nat Rev Immunol* 13:34–45.
73. Leslie M (2010) Cell biology. Beyond clotting: the powers of platelets. *Science* 328:562–564.
74. Semple JW, Italiano JE, Freedman J (2011) Platelets and the immune continuum. *Nat Rev Immunol* 11:264–274.
75. Li Z, Yang F, Dunn S, Gross AK, Smyth SS (2011) Platelets as immune mediators: Their role in host defense responses and sepsis. *Thromb Res* 127:184–188.

76. Ostrowski SR, Johansson PI (2011) Rethinking platelet function: Thrombocytopenia induced immunodeficiency in critical illness. *Med Hypotheses* 77:798–802.
77. Ostrowski SR, Sorensen AM, Larsen CF, Johansson PI (2011) Thrombelaetography and biomarker profiles in acute coagulopathy of trauma: A prospective study. *Scand J Trauma Resusc Emerg Med* 19:64.
78. Johansson PI, Sorensen AM, Perner A, Welling KL, Wanscher M, et al. (2011) High sCD40L levels Early After Trauma are Associated with Enhanced Shock, Sympathoadrenal Activation, Tissue and Endothelial Damage, Coagulopathy and Mortality. *J Thromb Haemost* 10:207–216.
79. Munnix IC, Cosemans JM, Auger JM, Heemskerk JW (2009) Platelet response heterogeneity in thrombus formation. *Thromb Haemost* 102:1149–1156.
80. Jonnalagadda D, Izu LT, Whiteheart SW (2012) Platelet secretion is kinetically heterogeneous in an agonist-responsive manner. *Blood* 120:5209–5216.
81. Levrat A, Gros A, Rugeri L, Inaba K, Floccard B, et al. (2008) Evaluation of rotation thrombelaetography for the diagnosis of hyperfibrinolysis in trauma patients. *Br J Anaesth* 100:792–797.
82. Carroll RC, Craft RM, Langdon RJ, Clanton CR, Snider CC, et al. (2009) Early evaluation of acute traumatic coagulopathy by thrombelaetography. *Transl Res* 154:34–39.
83. Rugeri L, Levrat A, David JS, Delecroix E, Floccard B, et al. (2007) Diagnosis of early coagulation abnormalities in trauma patients by rotation thrombelaetography. *J Thromb Haemost* 5:289–295.
84. Schochl H, Frietsch T, Pavelka M, Jambor C (2009) Hyperfibrinolysis after major trauma: differential diagnosis of lysis patterns and prognostic value of thrombelaetometry. *J Trauma* 67:125–131.
85. Kashuk JL, Moore EE, Sawyer M, Wohlaer M, Pezold M, et al. (2010) Primary fibrinolysis is integral in the pathogenesis of the acute coagulopathy of trauma. *Ann Surg* 252:434–442.
86. Leemann H, Lustenberger T, Talving P, Kobayashi L, Bukur M, et al. (2010) The Role of Rotation Thrombelaetometry in Early Prediction of Massive Transfusion. *J Trauma* 69:1403–1409.
87. Brohi K, Cohen MJ, Ganter MT, Schultz MJ, Levi M, et al. (2008) Acute coagulopathy of trauma: hypoperfusion induces systemic anticoagulation and hyperfibrinolysis. *J Trauma* 64:1211–1217.
88. Raza I, Davenport R, Rourke C, Platton S, Manson J, et al. (2012) The incidence and magnitude of fibrinolytic activation in trauma patients. *J Thromb Haemost*:10.
89. Gando S, Sawamura A, Hayakawa M (2011) Trauma, Shock, and Disseminated Intravascular Coagulation: Lessons from the Classical Literature. *Ann Surg* 254:10–19.
90. Frith D, Brohi K (2012) The pathophysiology of trauma-induced coagulopathy. *Curr Opin Crit Care* 18:631–636.
91. Schochl H, Cadamuro J, Seidl S, Franz A, Solomon C, et al. (2012) Hyperfibrinolysis is common in out-of-hospital cardiac arrest: Results from a prospective observational thrombelaetometry study. *Resuscitation*:10.
92. Adam DJ, Haggart PC, Ludlam CA, Bradbury AW (2004) Coagulopathy and hyperfibrinolysis in ruptured abdominal aortic aneurysm repair. *Ann Vasc Surg* 18:572–577.
93. Mesters RM, Helterbrand J, Utterback BG, Yan B, Chao YB, et al. (2000) Prognostic value of protein C concentrations in neutropenic patients at high risk of severe septic complications. *Crit Care Med* 28:2209–2216.
94. Raivio P, Fernandez JA, Kuitunen A, Griffin JH, Lassila R, et al. (2007) Activation of protein C and hemodynamic recovery after coronary artery bypass surgery. *J Thorac Cardiovasc Surg* 133:44–51.
95. Adrie C, Monchi M, Laurent I, Um S, Yan SB, et al. (2005) Coagulopathy after successful cardiopulmonary resuscitation following cardiac arrest: implication of the protein C anticoagulant pathway. *J Am Coll Cardiol* 46:21–28.
96. Levi M, van der PT (2010) Inflammation and coagulation. *Crit Care Med* 38:S26–S34.
97. Mosnier LO, Zlokovic BV, Griffin JH (2007) The cytoprotective protein C pathway. *Blood* 109:3161–3172.
98. Kim YH, Park JH, Hong SH, Koh JY (1999) Nonproteolytic neuroprotection by human recombinant tissue plasminogen activator. *Science* 284:647–650.
99. Fitzgerald ML, Wang Z, Park PW, Murphy G, Bernfield M (2000) Shedding of syndecan-1 and -4 ectodomains is regulated by multiple signaling pathways and mediated by a TIMP-3-sensitive metalloproteinase. *J Cell Biol* 148:811–824.
100. Xing K, Murthy S, Liles WC, Singh JM (2012) Clinical utility of biomarkers of endothelial activation in sepsis—a systematic review. *Crit Care* 16:R7.