

Altered expression of transforming growth factor beta 1 and matrix metalloproteinase-9 results in elevated intraocular pressure in mice

Jennifer V. Robertson, Anuja Siwakoti, Judith A. West-Mays

Department of Pathology and Molecular Medicine, McMaster University Health Science Centre, Rm 1R10, 1200 Main St. West, Hamilton, ON, Canada

Purpose: Extracellular matrix remodeling is thought to have profound effects on tissue architecture and associated function. We have shown previously that overexpression of transforming growth factor beta (TGF β), which stimulates matrix accumulation, results in altered morphology, cataract, and ocular hypertension in rodents. We have further shown that TGF β -induced cataracts can be mitigated through inhibition of the matrix metalloproteinases (MMP) MMP-2 and MMP-9. We therefore sought to determine whether loss of MMP expression also altered TGF β -induced changes in intraocular pressure (IOP).

Methods: To carry out this study, TGF β 1 transgenic mice were bred onto a MMP-9 null background. IOP measurements were made at 1- to 2-, 2- to 3-, and 3- to 4-month time points using a TonoLab rebound tonometer. Histological and immunofluorescence findings were obtained at the same time points.

Results: Our results demonstrate that lens-specific expression of TGF β 1 in mice results in altered morphology of the anterior segment and an accompanying significant increase in IOP. TGF β 1 transgenic mice bred onto the MMP-9 null background exhibited a further increase in IOP. Interestingly, the MMP-9-deficient animals (without the TGF β transgene), which exhibited normal angle morphology, had increased IOP levels compared to their wild-type littermates.

Conclusion: These results indicate that TGF β and MMP-9 likely act independently in regulating IOP. Additionally, MMP-9 plays an important role in maintaining IOP, and further investigation into the mechanisms of MMP-9 activity in the anterior angle may give clues to how extracellular matrix remodeling participates in ocular hypertension and glaucoma.

Glaucoma is characterized by cupping of the optic nerve head and loss of retinal ganglion cells and is a leading cause of irreversible blindness, affecting approximately 70 million people worldwide [1,2]. Although the endpoint pathology in glaucoma occurs as damage to the retinal ganglion cells and optic nerve, glaucoma typically involves tissues in the front of the eye. Ocular fluid is produced by the ciliary body and flows from front part of the eye, around the iris, and drains out through the outflow pathway. The main aqueous outflow pathway of the eye consists of a series of endothelial cell-lined channels in the angle of the anterior chamber: the trabecular meshwork (TM), Schlemm's canal, the collector channels, and the episcleral venous system [3]. Disease often begins with a defect in this pathway, leading to reduced outflow facility, a subsequent rise in intraocular pressure (IOP), and followed by damage to the optic nerve. Changes in outflow facility can be due to physical closure of the angle (closed

angle glaucoma) or as a result of malfunction without obvious anatomical changes (open angle glaucoma).

It has been hypothesized that in the case of open angle glaucoma, the pathological changes leading to aqueous outflow deficiency are the result of accumulated damage to the TM and Schlemm's canal [4] that can involve chronic scarring and fibrosis of the TM. A known mediator of fibrosis, transforming growth factor beta (TGF β), is present in the aqueous humor [5,6] and TGF β levels have been elevated in patients with glaucoma [7-9]. In vitro studies involving perfused anterior segments [10,11] have also shown that following treatment with TGF β 2, outflow facility was decreased, IOP was increased, and expression of the extracellular matrix (ECM)-related genes plasminogen activator inhibitor-1 and fibronectin was increased. TGF β can also cause significant alterations in the normal anatomic architecture of the anterior segment [12-14]. For example, as our laboratory has shown, adenoviral gene transfer of TGF β 1 to the anterior segment of the rat eye results in ocular hypertension, accompanied by aberrant proliferation and migration of corneal endothelial cells and iridocorneal adhesions, reminiscent of peripheral anterior synechiae observed in human

Correspondence to: Judith A. West-Mays, Department of Pathology and Molecular Medicine, McMaster University, Health Sciences Centre, Room 1R10 Hamilton, ON, Canada; Phone: (905) 525-9140 ext. 26237; FAX: (905) 525-7400; email: westmayj@mcmaster.ca

patients with closed angle glaucoma [15]. TGF β has also been shown to modulate the expression of proteins involved in the turnover of the ECM in the TM, in particular the matrix metalloproteinases (MMPs), which are known to influence outflow resistance [16].

MMPs, including MMP-2 and -9 among others, are elevated in the aqueous humor [17-19], optic nerve head [20,21], and chamber angle [19] of patients with glaucoma. Indeed, patients (and animals) undergoing trabeculotomy and filtering bleb [22-24] surgery also have increased levels of TGF β and MMPs, suggesting that these molecules play a role in normal homeostatic responses in the eye. During normal wound healing, the ECM, both damaged and newly deposited, is remodeled by MMPs. When matrix remodeling becomes chronic, such as in the case of fibrosis, the levels of MMPs are often elevated, which may seem counterintuitive. However, elevated MMP activity is likely required to continually remodel the aberrant amount of matrix laid down during fibrosis. In fact, there is evidence that MMPs may enhance outflow facility in the short term [25]. With time, however, overexpression of MMPs can cause pathological tissue degradation and even fibrosis [26]. Moreover, since MMPs are now known to play additional roles, such as in activating cytokines and liberating growth factors from the matrix, MMPs may also function in stimulating the cascade of events involved in fibrosis of the outflow pathway, yet this is currently not well understood.

In this study, we used a transgenic mouse model that overexpresses TGF β 1 in the lens and aqueous humor [13] to initially determine whether the anatomical changes observed in the anterior segment of these mice results in elevated IOP. Transgenic expression of TGF β 1 resulted in altered anterior segment morphology and an accompanying increase in IOP. Since increased MMP expression, and specifically the gelatinase MMP-9, is commonly associated with TGF β -induced fibrosis, we bred the TGF β 1 transgenic mice onto an MMP-9 null background to determine the role of MMP-9 in the initiation and progression of the glaucomatous features associated with elevated levels of TGF β . Surprisingly, TGF β transgenic mice bred onto the MMP-9 null background exhibited a further increase in IOP. Interestingly, MMP-9 null mice, without the presence of the TGF β 1 transgene, also exhibited elevated IOP levels compared to their wild-type littermates. Unlike the TGF β transgenic mice, the MMP-9 null mice did not exhibit any overt changes in anterior segment morphology. Thus, normal expression of MMP-9 may be required to maintain IOP.

METHODS

Animal treatment: Mice overexpressing constitutively active TGF β 1 under the α A-crystallin promoter were generated previously [13]. Mice lacking MMP-9 were purchased from Jackson Laboratories (Bar Harbor, ME). These mice were purchased on an FVBn background and backcrossed onto C57BL/6 for more than ten generations. To create parental strains, TGF β transgenics (on C57BL/6 background) were crossed with MMP-9 knockout animals (C57BL/6 background) to give TGF β positive (+)/MMP-9 heterozygotes (+/-). The experimental animals were then created by breeding TGF β ⁺/MMP-9^{+/-} mice with TGF β ⁻/MMP-9^{+/-} mice. Fifty percent of each litter were used as experimental animals, and 50% remained as breeders. All animals were treated in accordance with the guidelines of the Canadian Council on Animal Care and according to the Association for Research in Vision and Ophthalmology Statement for the Use of Animals in Ophthalmic and Vision Research. All animals were housed under specific pathogen-free conditions, and rodent laboratory food and water were provided ad libitum. All animal procedures were performed under inhalation anesthesia with isoflurane (MTC Pharmaceuticals, Cambridge, Canada). IOP readings were taken under isoflurane inhalation after one drop of 0.5% proparacaine solution (P4554; Oakville, Canada) was applied to each eye. All readings were taken at 1-2, 2-3, and 3-4 months of age and were performed at the same time of the day. Readings were acquired with the

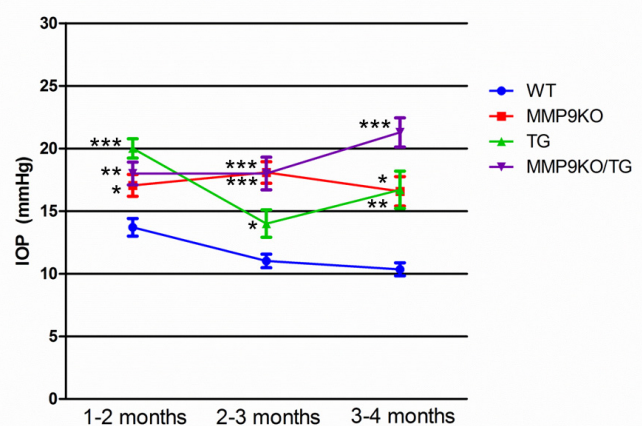


Figure 1. Intraocular pressure in mouse eyes over the course of 4 months. Data were obtained using the TonoLab under isoflurane anesthesia and represented as the mean intraocular pressure (IOP) in mm Hg. Error bars indicate the standard error of the mean (SEM). Transforming growth factor beta (TGF β) transgenic (TG) mice, matrix metalloproteinase-9 knockout (MMP-9KO)/TGF β 1 transgenic mice, and MMP-9KO mice all exhibited elevated IOP compared to wild-type (WT) mice at all three time points examined. *** $p < 0.001$; ** $p < 0.01$; * $p < 0.05$ (compared to WT).

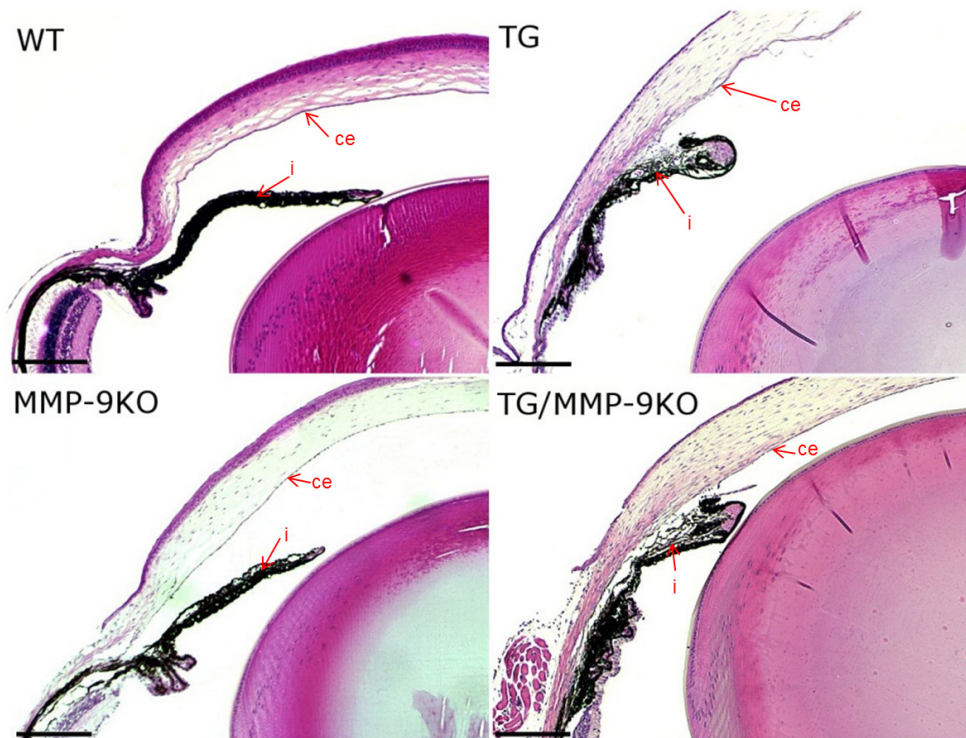


Figure 2. Hematoxylin and eosin-stained sections from 1- to 2-month-old mice. Adhesions between the iris (i) and corneal endothelium (ce) are easily visible in the transforming growth factor beta (TGF β) transgenic (TG) and matrix metalloproteinase-9 knockout (MMP-9KO)/TGF β 1 transgenic mice but are absent in the wild-type (WT) and MMP-9KO mice. 5X, bar=200 μ m.

Tonolab rebound tonometer (Topcon Canada, Inc, Waterloo, Canada). Several studies [27-29] have examined the reliability of the TonoLab to give consistent readings across a range of experimentally altered IOPs [30]. An average of nine independent valid readings was performed for each animal. Animals were euthanized at 1-2, 2-3, and 3-4 months of age by cervical dislocation, and their eyes were enucleated. One-way analysis of variance (ANOVA) was used to determine statistically significant differences between groups.

Histology: After fixation in 10% neutral buffered formalin for 48 h, tissues were embedded in paraffin by routine methods (sample size n=3 for each treatment and time point). Four-micrometer-thick mid-sagittal sections were cut and stained with hematoxylin and eosin to visualize general tissue architecture.

Immunohistochemistry: Studies to fluorescently localize alpha smooth muscle actin employed a monoclonal antibody conjugated to fluorescein isothiocyanate (clone 1A4; Sigma-Aldrich, Oakville, Canada; 1:200). In addition, sections were stained with polyclonal antibodies to collagen IV (Cedarlane Laboratories, Hornby, Canada; 1:200) and N-cadherin (Santa Cruz Biotechnologies, Santa Cruz, CA; 1:200). Secondary antibodies included goat anti-rabbit rhodamine and goat anti-rabbit fluorescein isothiocyanate (Bioshop Canada, Burlington, Canada; 1:500). All immunohistochemistry was

performed as follows: After dehydration in a graded series of xylene and ethanol, paraffin sections were washed three times for 5 min with PBS (Sigma Aldrich, St Louis, MO; pH 7.3), boiled for 20 min in 10 mM sodium citrate (pH 6.09) for antigen retrieval, and then washed an additional three times in PBS. Sections were then blocked with a solution of 5% normal goat serum in PBS for 1 h at room temperature. After three washes of 5 min in PBS, the primary antibody was added to the sections in a volume of 100 μ l and allowed to incubate overnight at 4 $^{\circ}$ C. After incubation, the sections were then washed three times for 5 min in PBS, and 100 μ l of secondary antibody solution was added. The sections were incubated for 1 h at room temperature. After incubation, the sections were then washed three times for 5 min in PBS and then coverslipped with Vectashield mounting medium with 4', 6-diamidino-2-phenylindole (DAPI) as a nuclear counterstain (Vector Laboratories, Burlingame, CA). A sample size (n) of three was used for each treatment and time point.

Microscopy: Fluorescently labeled sections were visualized using a Leica DMRA2 fluorescence microscope (Leica Microsystems Canada Inc., Richmond Hill, Canada) fitted with a Q-Imaging RETIGA 1300i FAST digital camera (Q-Imaging, Surrey, Canada). Images were captured using OpenLab software (PerkinElmer LAS, Shelton, CT). Cropping, rotating, and adding text to images were done using

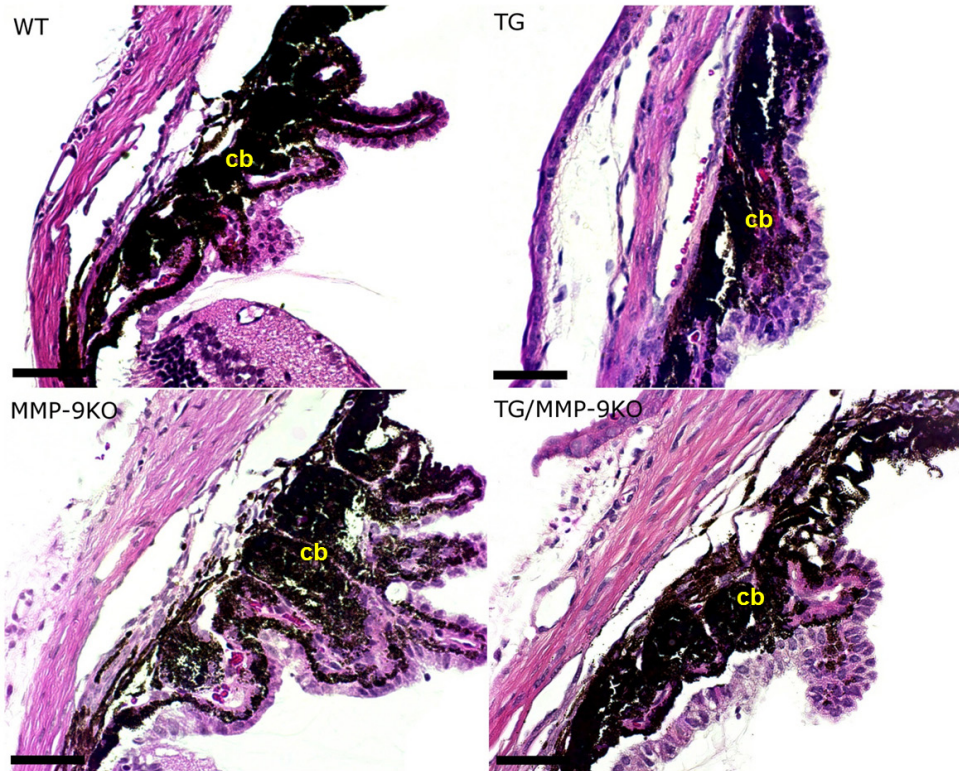


Figure 3. Hematoxylin and eosin-stained sections from 1- to 2-month-old mice. Altered development of the ciliary body (cb) is apparent in mice overexpressing transforming growth factor beta (TGF β); however, these features were absent in wild-type (WT) and matrix metalloproteinase-9 knockout (MMP-9KO) mice. 20X, bar=100 μ m.

Adobe Photoshop 8 (Adobe Systems Canada, Ottawa, Canada).

RESULTS

Intraocular pressure was measured in mice that overexpress constitutively active TGF β 1 under the α A-crystallin promoter in the lens (TG) at 1–2, 2–3, and 3–4 months of age and compared to measurements taken from their wild-type littermates (WT; Figure 1). At 1–2 months of age, TG mice (n=27) demonstrated significantly higher IOP than WT mice (n=20; $p<0.001$). At 2–3 months of age, the IOP in the TG (n=10) and WT (n=13) animals had decreased somewhat. However, the IOP in the TG animals remained significantly higher ($p<0.05$) than in the WT group. At the 3- to 4-month time point, the IOP in the TG (n=10) group had increased again and remained significantly ($p<0.01$) higher than that in the WT (n=3) animals.

Mice expressing the TGF β 1 transgene (TG) were bred onto an MMP-9 null (KO) background to determine whether the loss of MMP-9 altered in any way the elevated IOP in this line of mice. At 1–2 months of age, the TGF β transgenic/MMP9-KO (TG/MMP-9KO; n=17) mice exhibited IOP levels that were significantly higher than those of their WT (n=20) littermates (on the same mixed background; $p<0.01$; Figure

1). Importantly, the MMP-9 KO mice (n=16) without the TGF β transgene also exhibited a significantly higher IOP than their WT littermates ($p<0.05$). The IOP levels in the MMP-9 KO and TG/MMP-9KO mice were not significantly different from each other at this age ($p>0.05$). At 2–3 months of age and 3–4 months of age, the MMP-9 KO (2–3 month [n=9]; 3–4 month [n=6]) and TG/MMP-9KO (2–3 month [n=10]; 3–4 month [n=17]) groups demonstrated significantly higher IOP compared to the WT mice (MMP-9KO, $p<0.001$ and $p<0.05$, respectively; TG/MMP-9KO, $p<0.001$ and $p<0.001$, respectively). Interestingly, the TG/MMP-9KO group of animals exhibited the highest IOP among all groups at 3–4 months of age. Together, these data suggest that loss of MMP-9 on its own results in higher IOP, and this increase is further increased with the TGF β 1 transgene.

To determine morphological changes that may have led to the higher IOP observed in the TG and MMP-9KO mice, anterior segment morphology was examined using routine histological methods (Figure 2). At 1–2 months of age, all mice with the TGF β 1 transgene, the TG and TG/MMP-9KO groups, exhibited thicker corneas than the WT mice. The ciliary bodies in the TG and TG/MMP-9KO groups also appeared underdeveloped. Closer examination of the ciliary body (Figure 3) revealed that the pigmented and nonpigmented ciliary epithelial layers were present, and

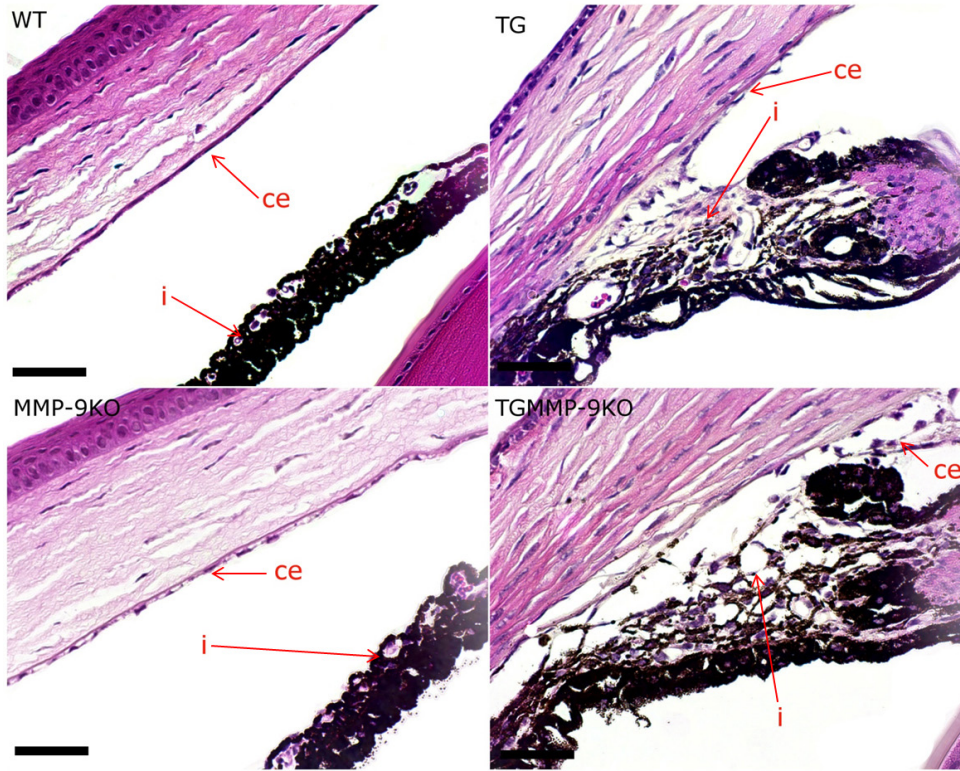


Figure 4. Hematoxylin and eosin-stained sections from 1- to 2-month-old mice. Adhesions seen in transforming growth factor beta (TGF β) transgenic (TG) and matrix metalloproteinase-9 knockout (MMP-9KO)/TGF β 1 transgenic mice clearly demonstrate a change in the corneal endothelium (ce) and a hypercellularity of the iris (i) epithelium. These features were absent in the wild-type (WT) and MMP-9KO mice. 40X, bar=50 μ m.

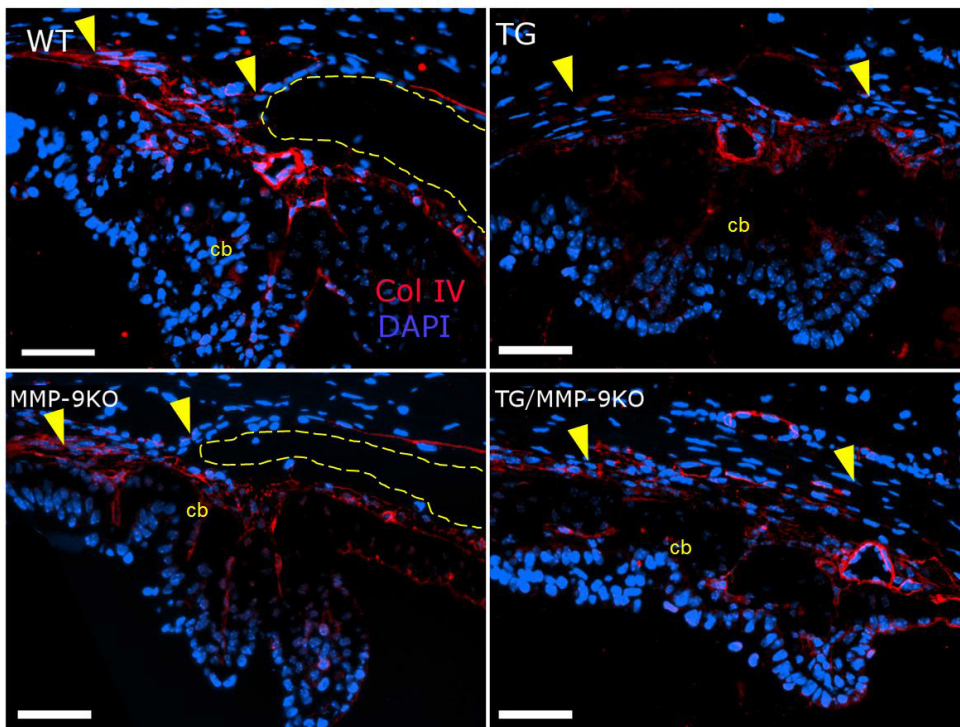


Figure 5. Immunolocalization of collagen IV (ColIV) in the ciliary body and angle of 1- to 2-month-old mice. Organized expression of ColIV can be seen in the trabecular meshwork (tm; region designated by the yellow arrowheads) and throughout the rays of the ciliary body (cb) in the open angles (yellow dashed line) of the wild-type (WT) and matrix metalloproteinase-9 knockout (MMP-9KO) mice. In the transgenic (TG) and TG/MMP-9KO mice, ColIV expression appears less organized. 40X, bar=50 μ m.

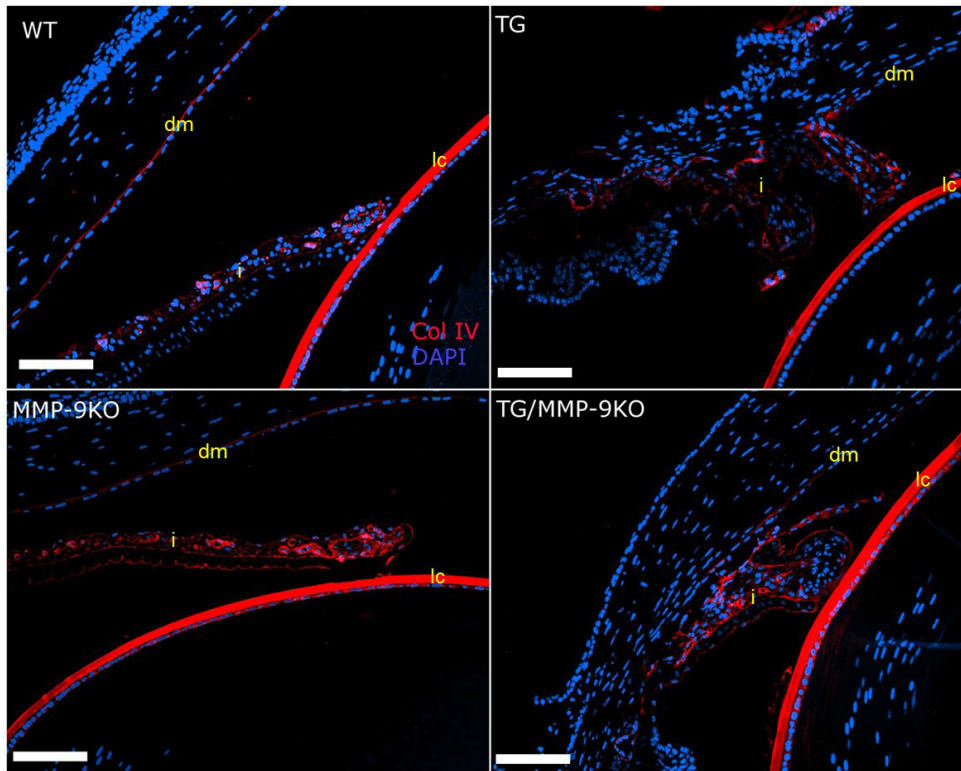


Figure 6. Immunolocalization of collagen IV (ColIV) in the iris of 1- to 2-month-old mice. Positive expression can be seen in the lens capsule (lc) in all groups of mice. Expression in the iris (i) and Descemet's membrane (dm) is organized in the wild-type (WT) and matrix metalloproteinase-9 knockout (MMP-9KO) mice. Expression is also apparent in the transgenic (TG) and TG/MMP-9KO mice. However, it is distorted, consistent with the tissue distortion in these animals. 20X, bar=100 μ m.

the lack of ciliary folds appeared concomitant with a striking deficiency in the ciliary process stroma. Additionally, the pars plana appeared to be lengthened (not shown), which was likely due to the lack of ciliary folds. These features were not evident in the WT mice or the MMP-9 KO mice, mice that did not express the TGF β 1 transgene. In addition, iridocorneal adhesions were evident and appeared to involve only the iris stromal layer as evidenced by the hyperproliferation of cells in this area, a feature absent in the anterior and posterior pigmented epithelia (Figure 4). Similar histological findings were found for the 3- to 4-month-old mice (data not shown).

In a previous study, we found that administering adenoviral-delivered TGF β 1 (AdTGF β 1) to the anterior chamber of the rat eye resulted in anterior segment changes that were similar to those described for the TGF β 1 transgenic mice, including corneal thickening and iridocorneal adhesions [15]. Altered expression in various fibroproliferative markers was also discovered in the AdTGF β 1 rat model. Thus, we examined the expression of these proteins in the TG and MMP-9KO groups at 1–2 months (Figures 5, Figure 6, Figure 7, and Figure 8) and 3–4 months (data not shown) of age. In the TM, collagen IV expression was observed in parallel bundles extending into the fold of the ciliary body in the WT and MMP-9 KO animals (Figure 5). In contrast, the TG and TG/MMP-9KO groups (all examined) demonstrated disorganized

expression of this molecule. In the iris and cornea (Figure 6), the WT animals showed normal distribution of collagen IV in the iris epithelia and surrounding the blood vessels. The MMP-9 KO animals appeared to demonstrate increased expression in this area. The TG and TG/MMP-9KO groups demonstrated abundant expression in the iridocorneal adhesions. Moreover, those animals in the TG/MMP-9KO group appeared to have increased collagen IV expression in this area compared to the TG animals. Similar findings were obtained for animals at 3–4 months of age (data not shown).

N-cadherin was next immunolocalized (Figure 7). The WT and MMP-9KO groups at 1–2 months of age showed typical expression of N-cadherin in the corneal endothelium, with minimal expression in the iris epithelium. In contrast, the TGF β 1 transgenic groups examined, TG and TG/MMP-9KO, demonstrated abundant expression of N-cadherin in the hypercellular region within the iridocorneal adhesions, similar to what we observed in the past in the AdTGF β 1-treated rats. Similar findings were obtained for the animals at 3–4 months of age (data not shown).

All of the groups at 1–2 months of age showed typical expression of alpha smooth muscle actin (α SMA) in the pupillary dilator muscle of the iris (Figure 8). However, in all of the TG and TG/MMP-9KO groups, α SMA expression was

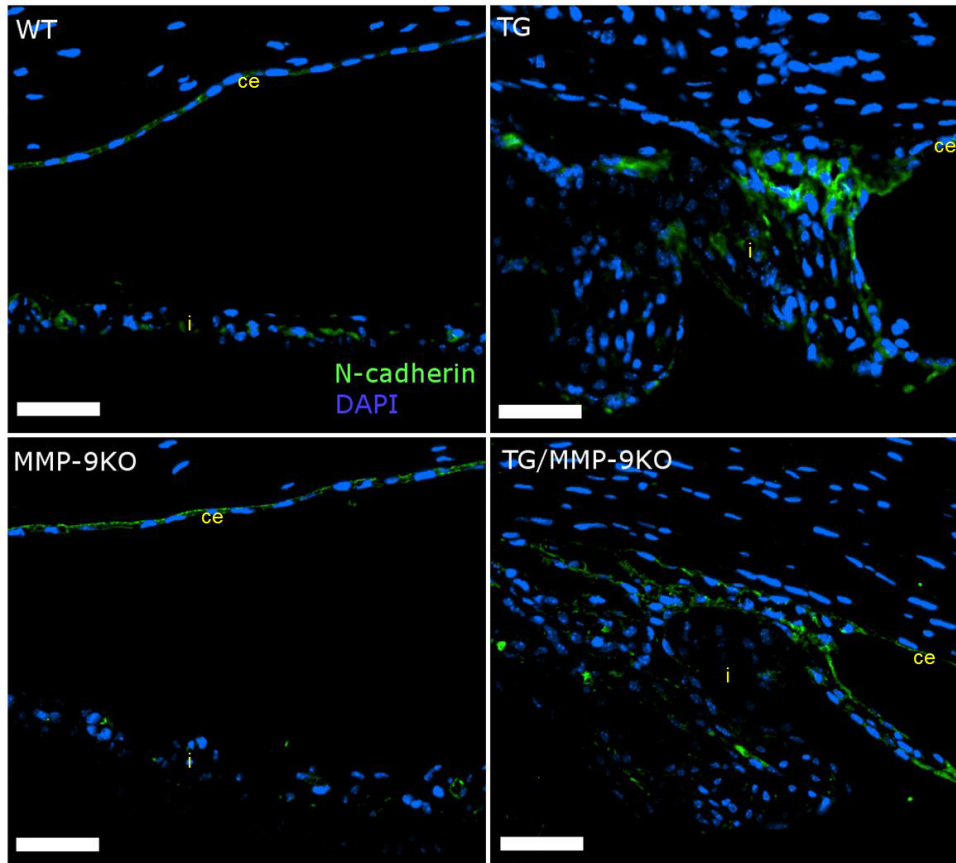


Figure 7. Immunolocalization of N-cadherin in eyes of 1- to 2-month-old mice. Expression of N-cadherin is detectable in the corneal endothelium (ce) and the iris (i) of wild-type (WT) and matrix metalloproteinase-9 knockout (MMP-9KO) mice. Increased expression is seen in the adhesion between the corneal endothelium and the iris epithelium in the transgenic (TG) and TG/MMP-9KO mice. 40X, bar=50 μ m.

also observed in the area of the iridocorneal adhesions. In the TM, the WT animals demonstrated typical, abundant expression of α SMA (Figure 9). However, the TG and MMP-9 KO animals showed somewhat less α SMA expression in this area, with animals in the TG/MMP-9KO group exhibiting the least expression of α SMA in the TM region. Similar findings were obtained for animals at 3–4 months of age (data not shown).

DISCUSSION

Maintaining IOP is critical for retinal health and normal vision. Discovery of the mechanisms that contribute to ocular hypertension is therefore critical for developing effective preventative and/or therapeutic treatments. In this study, we examined the contributions of TGF β 1 and MMP-9, two genes known to regulate the dynamics of the ECM and suspected of controlling aqueous outflow. Initially, we examined the effect of TGF β 1 overexpression on IOP using a previously developed transgenic mouse line in which active TGF β 1 is chronically expressed from the lens, under control of the α A-crystallin promoter [13]. As reported previously, we found that these mice exhibited several defects in the anterior segment of the eye, including anterior subcapsular cataracts

and iridocorneal adhesions resembling peripheral anterior synechiae formation in humans [13]. Importantly, we demonstrated that along with the dysmorphic changes in the anterior segment, the TGF β 1 transgenic mice exhibited significantly higher IOP than that of their wild-type littermates. The IOP levels in the TGF β 1 transgenic mice exhibited a decrease at the 2–3 month time point. However, this decrease was also observed in their wild-type littermates, and likely reflected a change in eye size in the mice as they were developing with age. The increased IOP in the TGF β 1 transgenic mice concurs with results of a previous study from our laboratory involving AdTGF β 1 to the anterior chamber of the rat eye in which similar changes in anterior segment morphology were observed and an accompanying increase in IOP [15]. Interestingly, a study using intracameral delivery of active AdTGF β 2 in rats also reported an induction in ocular hypertension [31]. However, these rats did not exhibit the anterior segment changes reported for the AdTGF β 1-injected rats. The authors further demonstrated that delivery of AdTGF β 2 reduced aqueous humor outflow facility in mice. Together, these findings indicate that overexpression of these TGF β isoforms (in active form) can induce changes that resemble

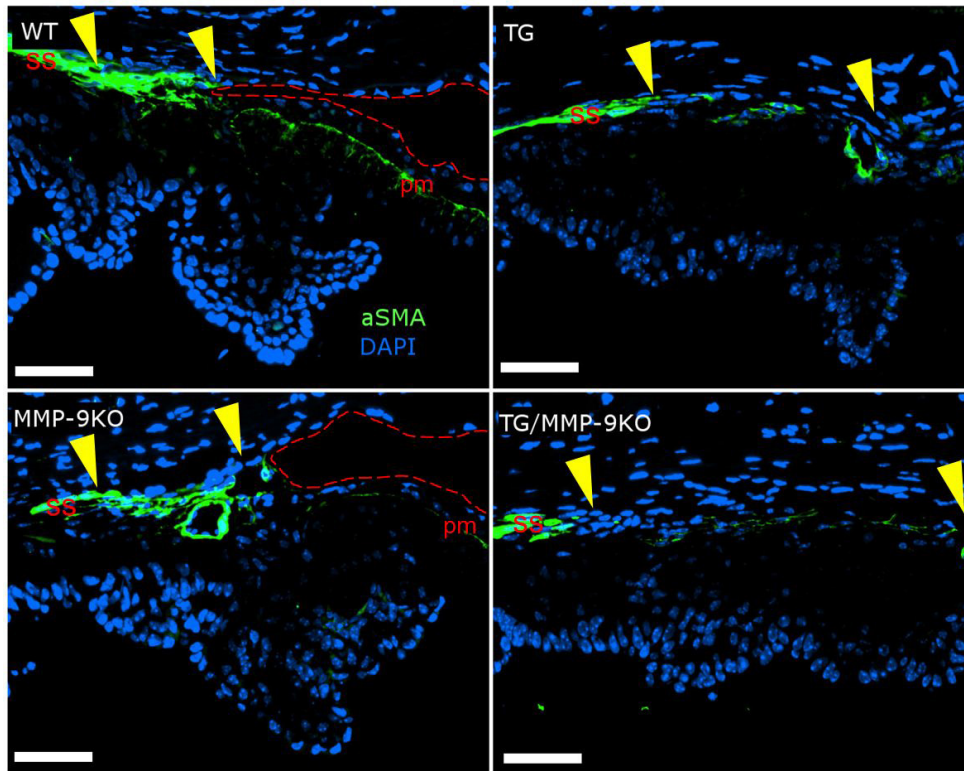


Figure 8. Immunolocalization of alpha smooth muscle actin in anterior chamber angles of 1- to 2-month-old mice. Expression of alpha smooth muscle actin (α SMA) is normal in wild-type (WT) mice, demonstrating a well-developed scleral spur (ss) and positive staining within the pupillary muscles (pm). Expression appears decreased in these areas in the matrix metalloproteinase-9 knockout (MMP-9KO) and transgenic (TG) mice. (The trabecular meshwork region is designated by the yellow arrowheads.) This decrease is exacerbated in the TG/MMP-9KO mice. An open chamber angle (red dashed line) can readily be seen in the WT and KO mice but not in TG and MMP-9KO/TG mice. 40X, bar=50 μ m.

open and closed angle forms of glaucoma, and this results in elevated IOP.

The TGF β 1 transgenic mice, as well as those bred onto the MMP-9 null background (TG/MMP-9KO), also exhibited thickened corneas. Previous detailed investigation of the corneal phenotype of lens-specific TGF β 1 transgenic mice demonstrated that the change in corneal thickness is due to an increase in the thickness of the corneal stroma [13]. Thickened corneas were also reported for rats injected with AdTGF β 1 [15] and AdTGF β 2 [31]. To address whether a thickened cornea affects tonometry readings, investigations were performed by Shepard and colleagues in which IOP readings obtained from cannulation were compared with those taken using the tonometer [31]. The findings from these studies revealed that the tonometer-generated readings correlated well with the actual IOP readings in uninjected eyes and eyes injected with active AdTGF β 2. Thus, although the animals overexpressing TGF β have thickened corneas, this is not likely to impact the accuracy of the tonometer readings [31].

In addition to the gross changes in the anterior chamber observed in the TGF β 1 transgenic mice, reduced expression of α SMA was observed in the TM compared to the wild-type littermates. This finding agrees with the decreased expression

of α SMA previously reported by our laboratory in the TM of AdTGF β 1-treated rat eyes [15]. α SMA, a contractile protein, is expressed in the normal TM of humans and other species [32-39]. This suggests α SMA may play a role in modulating the outflow facility of the aqueous humor [40]. The fact that α SMA expression was decreased in the TM of TGF β 1 transgenic mice and AdTGF β 1-treated rats, both of which have accompanying ocular hypertension, supports this notion. Interestingly, in glaucomatous dogs, as ocular hypertension progresses, there is a loss of α SMA expression in the outer uveal and inner corneoscleral TM cells [32]. These *in vivo* results are, however, in contrast to several *in vitro* studies that show that TM cells, when exposed to TGF β , express a higher level of α SMA [41]. Indeed TGF β is a well-known regulator of α SMA [42]. As we have proposed previously [15], one possibility for the different findings may be related to the amount and duration of TGF β elevation. For example, anterior segment tissues *in vivo* may show a different response to chronically elevated TGF β compared to *in vitro* stimulation, which is often shorter. Additionally, the environmental cues *in vitro* are absent, which could alter the responsiveness of a given cell type to TGF β stimulation.

Matrix metalloproteinases (MMPs) are elevated in the aqueous humor [17,18] and chamber angle [19] of patients with glaucoma, and MMPs are thought to control regulation of the

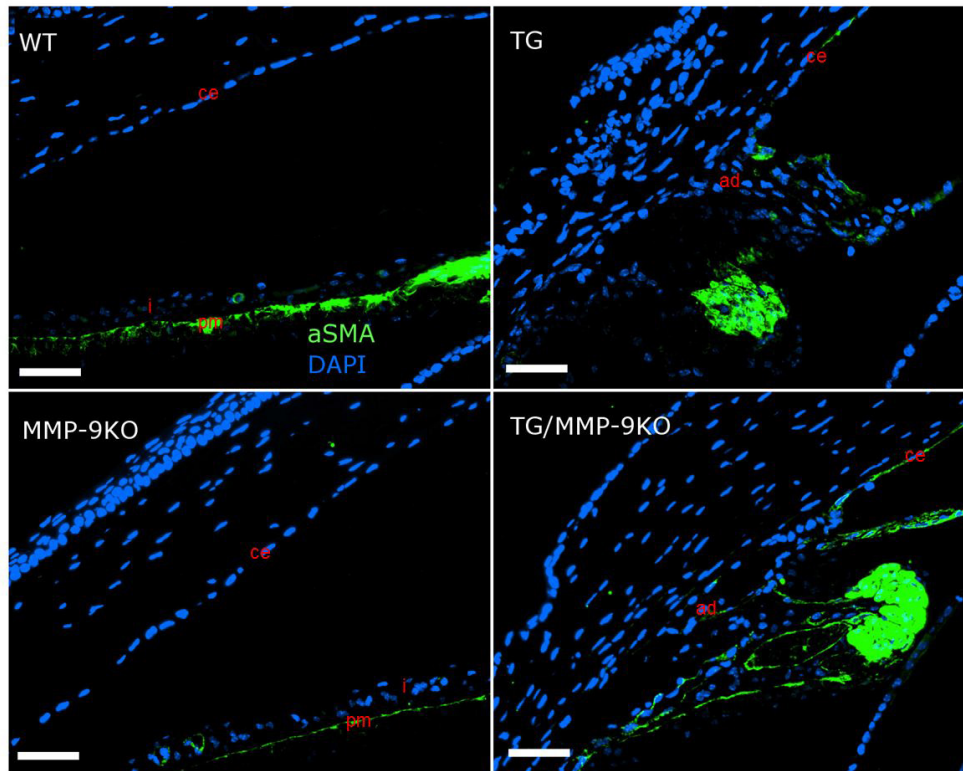


Figure 9. Immunolocalization of alpha smooth muscle actin in the iris and cornea of 1- to 2-month-old mice. The pupillary muscle (pm) is positively stained and easily discerned in the wild-type (WT) and matrix metalloproteinase-9 knockout (MMP-9KO) mice. The altered structure of the iris and adhesions (ad) between the anterior iris and the corneal endothelium resulted in aberrant expression of alpha smooth muscle actin (α SMA) in the transgenic (TG) and TG/MMP-9KO mice. 40X, bar=50 μ m.

aqueous outflow pathway. However, since MMPs have anti- and profibrotic functions, it was not clear what role MMPs may have in regulating IOP in vivo. Our laboratory has shown that MMP inhibition can suppress TGF β -stimulated fibrosis in the lens. For example, using a TGF β -induced model of anterior subcapsular cataracts in rats, we demonstrated that cotreatment with the MMP-2/9 specific inhibitor effectively prevented anterior subcapsular cataract formation and the associated deposition of matrix [43]. In addition, MMP inhibition has also been shown to prevent matrix deposition in injury-induced tissue remodeling [44,45]. We therefore hypothesized that MMP, and in particular MMP-9, deficiency, may attenuate the ocular phenotype and IOP levels observed in the TGF β 1 transgenic mice. We found the contrary; the TGF β 1 transgenic mice bred onto the MMP-9 null background exhibited the same fibrotic changes in the anterior segment as the TGF β 1 mice on the MMP-9 wild-type background. These findings demonstrate that MMP-9 does not play a role in mediating the fibroproliferative response in the anterior chamber of TGF β 1 transgenic mice.

Ocular hypertension was further elevated in the TG/MMP-9KO mice compared to the TG/MMP-9 WT mice. Furthermore, the MMP-9 KO mice, in the absence of the TGF β 1 transgene, exhibited increased IOP levels compared to

their wild-type littermates. This occurred without the alterations in anterior segment morphology that were detected in the TGF β 1 transgenic mice. These findings suggest that a mechanism independent of that induced by TGF β 1 is responsible for the elevated IOP in the MMP-9 KO mice. MMPs have been shown, in human eye perfusion models, to play a role in regulating trabecular outflow, which directly impacts IOP [46,47]. For example, increasing activity of MMP-2, MMP-9, and MMP-3 in culture media of anterior segment tissue resulted in increasing the outflow rate by 160% [47]. Furthermore, inhibiting MMP activity significantly reduced the outflow rate [47]. These findings suggest that MMPs participate in ECM turnover in the TM, and when their activity levels are reduced, ECM accumulates, impeding outflow. However, demonstration of this mechanism in vivo and in glaucomatous eyes has not been reported. We did not observe any overt changes in ECM deposition in the TM of the MMP-9 KO mice. The mouse and human TM have similar structures. However, the TM in the mouse is much reduced in size compared to that in humans. Thus, detailed ultrastructural studies are required to rule out subtle changes in matrix deposition that may affect outflow. Finally, although MMPs are principally known for their ability to remodel the ECM, they have also been shown to participate in numerous signaling events, mediated by the cleaving of cytokine

receptors or cell adhesion molecules and the activation of other MMPs. Thus, the loss of MMP-9 expression in the TM may alter cell signaling and thereby affect outflow and IOP.

In conclusion, we have demonstrated that alterations in expression levels of the extracellular matrix remodeling molecules, TGF β and MMP-9, can impact the regulation of IOP. In particular, the loss of MMP-9 expression resulted in increased IOP levels, in the absence of any overt morphological changes. Further detailed analysis of the TM structure and aqueous outflow facility of the MMP-9 KO mice will help to further understand the how this enzyme contributes to regulating IOP.

ACKNOWLEDGMENTS

This work was supported by the American Health Assistance Foundation- National Glaucoma Research Award (G2008-127; JWM). The TGF β 1 transgenic mice were a kind gift from P. Overbeek (Baylor College of Medicine, Houston TX). Special thanks to Dr. Christopher Reilly (University of California, Davis) for his assistance with preparation of a subset of ocular samples.

REFERENCES

1. Quigley HA, Broman AT. The number of people with glaucoma worldwide in 2010 and 2020. *Br J Ophthalmol* 2006; 90:262-7. [PMID: 16488940].
2. Kingman S. Glaucoma is second leading cause of blindness globally. *Bull World Health Organ* 2004; 82:887-8. [PMID: 15640929].
3. Tripathi RC. Ultrastructure of the exit pathway of the aqueous in lower mammals. (A preliminary report on the "angular aqueous plexus"). *Exp Eye Res* 1971; 12:311-4. [PMID: 5130275].
4. De La Paz MA, Epstein DL. Effect of age on superoxide dismutase activity of human trabecular meshwork. *Invest Ophthalmol Vis Sci* 1996; 37:1849-53. [PMID: 8759353].
5. Cousins SW, McCabe MM, Danielpour D, Streilein JW. Identification of transforming growth factor-beta as an immunosuppressive factor in aqueous humor. *Invest Ophthalmol Vis Sci* 1991; 32:2201-11. [PMID: 2071334].
6. Jampel HD, Roche N, Stark WJ, Roberts AB. Transforming growth factor-beta in human aqueous humor. *Curr Eye Res* 1990; 9:963-9. [PMID: 2276273].
7. Tripathi RC, Li J, Chan WF, Tripathi BJ. Aqueous humor in glaucomatous eyes contains an increased level of TGF-beta 2. *Exp Eye Res* 1994; 59:723-7. [PMID: 7698265].
8. Ochiai Y, Ochiai H. Higher concentration of transforming growth factor-beta in aqueous humor of glaucomatous eyes and diabetic eyes. *Jpn J Ophthalmol* 2002; 46:249-53. [PMID: 12063033].
9. Ozcan AA, Ozdemir N, Canataroglu A. The aqueous levels of TGF-beta2 in patients with glaucoma. *Int Ophthalmol* 2004; 25:19-22. [PMID: 15085971].
10. Gottanka J, Chan D, Eichhorn M, Lutjen-Drecoll E, Ethier CR. Effects of TGF-beta2 in perfused human eyes. *Invest Ophthalmol Vis Sci* 2004; 45:153-8. [PMID: 14691167].
11. Fleener DL, Shepard AR, Hellberg PE, Jacobson N, Pang IH, Clark AF. TGFbeta2-induced changes in human trabecular meshwork: implications for intraocular pressure. *Invest Ophthalmol Vis Sci* 2006; 47:226-34. [PMID: 16384967].
12. Flügel-Koch C, Ohlmann A, Piatigorsky J, Tamm ER. Disruption of anterior segment development by TGF-beta1 overexpression in the eyes of transgenic mice. *Dev Dyn* 2002; 225:111-25. [PMID: 12242711].
13. Srinivasan Y, Lovicu FJ, Overbeek PA. Lens-specific expression of transforming growth factor beta1 in transgenic mice causes anterior subcapsular cataracts. *J Clin Invest* 1998; 101:625-34. [PMID: 9449696].
14. Lütjen-Drecoll E. Morphological changes in glaucomatous eyes and the role of TGFbeta2 for the pathogenesis of the disease. *Exp Eye Res* 2005; 81:1-4. [PMID: 15978248].
15. Robertson JV, Golesic E, Gauldie J, West-Mays JA. Ocular gene transfer of active TGF-beta induces changes in anterior segment morphology and elevated IOP in rats. *Invest Ophthalmol Vis Sci* 2010; 51:308-18. [PMID: 19696167].
16. Keller KE, Aga M, Bradley JM, Kelley MJ, Acott TS. Extracellular matrix turnover and outflow resistance. *Exp Eye Res* 2009; 88:676-82. [PMID: 19087875].
17. Schlötzer-Schrehardt U, Lommatzsch J, Kuchle M, Konstas AG, Naumann GO. Matrix metalloproteinases and their inhibitors in aqueous humor of patients with pseudoexfoliation syndrome/glaucoma and primary open-angle glaucoma. *Invest Ophthalmol Vis Sci* 2003; 44:1117-25. [PMID: 12601038].
18. Määttä M, Tervahartiala T, Harju M, Airaksinen J, Autio-Harmainen H, Sorsa T. Matrix metalloproteinases and their tissue inhibitors in aqueous humor of patients with primary open-angle glaucoma, exfoliation syndrome, and exfoliation glaucoma. *J Glaucoma* 2005; 14:64-9. [PMID: 15650607].
19. Ronkko S, Rekonen P, Kaarniranta K, Puustjarvi T, Terasvirta M, Uusitalo H. Matrix metalloproteinases and their inhibitors in the chamber angle of normal eyes and patients with primary open-angle glaucoma and exfoliation glaucoma. *Graefe's archive for clinical and experimental ophthalmology = Albrecht Von Graefes Arch Klin Exp Ophthalmol* 2007; 245:697-704. .
20. Yan X, Tezel G, Wax MB, Edward DP. Matrix metalloproteinases and tumor necrosis factor alpha in glaucomatous optic nerve head. *Arch Ophthalmol* 2000; 118:666-73. [PMID: 10815159].
21. Agapova OA, Ricard CS, Salvador-Silva M, Hernandez MR. Expression of matrix metalloproteinases and tissue inhibitors of metalloproteinases in human optic nerve head astrocytes. *Glia* 2001; 33:205-16. [PMID: 11241738].

22. Chintala SK, Wang N, Diskin S, Mattox C, Kagemann L, Fini ME, Schuman JS. Matrix metalloproteinase gelatinase B (MMP-9) is associated with leaking glaucoma filtering blebs. *Exp Eye Res* 2005; 81:429-36. [PMID: 16185954].
23. MATHALONE N, Marmor S, Rahat MA, Lahat N, Oron Y, Geyer O. MMP expression in leaking filtering blebs and tears after glaucoma filtering surgery. *Graefes's archive for clinical and experimental ophthalmology Albrecht Von Graefes Arch Klin Exp Ophthalmol* 2011; 249:1047-55. .
24. Shima I, Katsuda S, Ueda Y, Takahashi N, Sasaki H. Expression of matrix metalloproteinases in wound healing after glaucoma filtration surgery in rabbits. *Ophthalmic Res* 2007; 39:315-24. [PMID: 17957131].
25. Keller KE, Bradley JM, Acott TS. Differential effects of ADAMTS-1, -4, and -5 in the trabecular meshwork. *Invest Ophthalmol Vis Sci* 2009; 50:5769-77. [PMID: 19553617].
26. Sivak JM, Fini ME. MMPs in the eye: emerging roles for matrix metalloproteinases in ocular physiology. *Prog Retin Eye Res* 2002; 21:1-14. [PMID: 11906808].
27. Saeki T, Aihara M, Ohashi M, Araie M. The efficacy of TonoLab in detecting physiological and pharmacological changes of mouse intraocular pressure—comparison with TonoPen and microneedle manometry. *Curr Eye Res* 2008; 33:247-52. [PMID: 18350435].
28. Morrison JC, Jia L, Cepurna W, Guo Y, Johnson E. Reliability and sensitivity of the TonoLab rebound tonometer in awake Brown Norway rats. *Invest Ophthalmol Vis Sci* 2009; 50:2802-8. [PMID: 19324849].
29. Pease ME, Cone FE, Gelman S, Son JL, Quigley HA. Calibration of the TonoLab tonometer in mice with spontaneous or experimental glaucoma. *Invest Ophthalmol Vis Sci* 2011; 52:858-64. [PMID: 20720229].
30. Ding C, Wang P, Tian N. Effect of general anesthetics on IOP in elevated IOP mouse model. *Exp Eye Res* 2011; 92:512-20. [PMID: 21457709].
31. Shepard AR, Millar JC, Pang IH, Jacobson N, Wang WH, Clark AF. Adenoviral gene transfer of active human transforming growth factor- β 2 elevates intraocular pressure and reduces outflow facility in rodent eyes. *Invest Ophthalmol Vis Sci* 2010; 51:2067-76. [PMID: 19959644].
32. Hassel B, Samuelson DA, Lewis PA, Gelatt KN. Immunocytochemical localization of smooth muscle actin-containing cells in the trabecular meshwork of glaucomatous and nonglaucomatous dogs. *Vet Ophthalmol* 2007; 10:Suppl 138-45. [PMID: 17973833].
33. Chen CC, Yeh LK, Liu CY, Kao WW, Samples JR, Lin SJ, Hu FR, Wang IJ. Morphological differences between the trabecular meshworks of zebrafish and mammals. *Curr Eye Res* 2008; 33:59-72. [PMID: 18214743].
34. Robertson JV, Nathu Z, Najjar A, Dwivedi D, Gaudie J, West-Mays JA. Adenoviral gene transfer of bioactive TGF β 1 to the rodent eye as a novel model for anterior subcapsular cataract. *Mol Vis* 2007; 13:457-69. [PMID: 17417606].
35. Flügel C, Tamm E, Lutjen-Drecoll E. Different cell populations in bovine trabecular meshwork: an ultrastructural and immunocytochemical study. *Exp Eye Res* 1991; 52:681-90. [PMID: 1855543].
36. de Kater AW, Shahsafaei A, Epstein DL. Localization of smooth muscle and nonmuscle actin isoforms in the human aqueous outflow pathway. *Invest Ophthalmol Vis Sci* 1992; 33:424-9. [PMID: 1740375].
37. Tamm E, Flügel C, Stefani FH, Rohen JW. Contractile cells in the human scleral spur. *Exp Eye Res* 1992; 54:531-43. [PMID: 1623940].
38. Selbach JM, Gottanka J, Wittmann M, Lutjen-Drecoll E. Efferent and afferent innervation of primate trabecular meshwork and scleral spur. *Invest Ophthalmol Vis Sci* 2000; 41:2184-91. [PMID: 10892861].
39. Ryland TR, Lewis PA, Chisholm M, Gelatt KN, Samuelson DA. Localization of smooth muscle actin in the iridocorneal angle of normal and spontaneous glaucomatous beagle dogs. *Vet Ophthalmol* 2003; 6:205-9. [PMID: 12950651].
40. Wiederholt M. Direct involvement of trabecular meshwork in the regulation of aqueous humor outflow. *Curr Opin Ophthalmol* 1998; 9:46-9. [PMID: 10180513].
41. Tamm ER, Siegner A, Baur A, Lutjen-Drecoll E. Transforming growth factor- β 1 induces alpha-smooth muscle-actin expression in cultured human and monkey trabecular meshwork. *Exp Eye Res* 1996; 62:389-97. [PMID: 8795457].
42. Biernacka A, Dobaczewski M, Frangogiannis NG. TGF- β signaling in fibrosis. *Growth Factors* 2011; 29:196-202. [PMID: 21740331].
43. Dwivedi DJ, Pino G, Banh A, Nathu Z, Howchin D, Margetts P, Sivak JG, West-Mays JA. Matrix metalloproteinase inhibitors suppress transforming growth factor- β -induced subcapsular cataract formation. *Am J Pathol* 2006; 168:69-79. [PMID: 16400010].
44. Corbel M, Caulet-Maugendre S, Germain N, Molet S, Lagente V, Boichot E. Inhibition of bleomycin-induced pulmonary fibrosis in mice by the matrix metalloproteinase inhibitor batimastat. *J Pathol* 2001; 193:538-45. [PMID: 11276015].
45. Wong TT, Mead AL, Khaw PT. Prolonged antiscarring effects of ilomastat and MMC after experimental glaucoma filtration surgery. *Invest Ophthalmol Vis Sci* 2005; 46:2018-22. [PMID: 15914618].
46. Bradley JM, Anderssohn AM, Colvis CM, Parshley DE, Zhu XH, Ruddat MS, Samples JR, Acott TS. Mediation of laser trabeculoplasty-induced matrix metalloproteinase expression by IL-1 β and TNF α . *Invest Ophthalmol Vis Sci* 2000; 41:422-30. [PMID: 10670472].
47. Bradley JM, Vranka J, Colvis CM, Conger DM, Alexander JP, Fisk AS, Samples JR, Acott TS. Effect of matrix metalloproteinases activity on outflow in perfused human organ culture. *Invest Ophthalmol Vis Sci* 1998; 39:2649-58. [PMID: 9856774].

Articles are provided courtesy of Emory University and the Zhongshan Ophthalmic Center, Sun Yat-sen University, P.R. China. The print version of this article was created on 21 March 2013. This reflects all typographical corrections and errata to the article through that date. Details of any changes may be found in the online version of the article.