

RESEARCH ARTICLE

Open Access

Cell stress molecules in the skeletal muscle of GNE myopathy

Charlotte Fischer¹, Konstanze Kleinschnitz^{1,2}, Arne Wrede³, Ingrid Muth¹, Niels Kruse^{2,3}, Ichizo Nishino⁴ and Jens Schmidt^{1,2*}

Abstract

Background: Mutations of the UDP-N-acetylglucosamine-2-epimerase/N-acetylmannosamine-kinase (GNE)-gene are causally related to GNE myopathy. Yet, underlying pathomechanisms of muscle fibre damage have remained elusive. In sporadic inclusion body myositis (sIBM), the pro-inflammatory cell-stress mediators α B-crystallin and inducible nitric oxide synthase (iNOS) are crucial markers of the disease pathology.

Methods: 10 muscle biopsies from GNE myopathy patients were analyzed for mRNA-expression of markers of cell-stress, inflammation and β -amyloid and compared to non-myopathic controls. Using double-labeling immunohistochemistry, serial sections of skeletal muscle biopsies were stained for amyloid precursor protein (APP), major histocompatibility complex (MHC)-I, α B-crystallin, neural cell adhesion molecule (NCAM), interleukin (IL)-1 β , β -amyloid, iNOS, and phosphorylated neurofilament (P-neurofilament) as well as hematoxylin/eosin histochemistry. Corresponding areas of all biopsies with a total of 2,817 muscle fibres were quantitatively assessed for all markers.

Results: mRNA-expression of APP, NCAM, iNOS, TNF- α and TGF- β was higher in GNE myopathy compared to controls, yet this was not statistically significant. The mRNA-expression of APP and α B-crystallin significantly correlated with the expression of several pro-inflammatory and cell-stress-associated markers as NCAM, IL-1 β , TGF- β , CCL-3, and CCL4. By immunohistochemistry, α B-crystallin and iNOS were co-upregulated and the number of fibres positive for α B-crystallin, NCAM, MHC-I and iNOS significantly correlated with each other. A large fraction of fibres positive for α B-crystallin were double positive for iNOS and vice-versa. Moreover, several fibres with structural abnormalities were positive for α B-crystallin and iNOS. Notably, particularly normal appearing fibres displayed an overexpression of these molecules.

Conclusions: The cell-stress molecules α B-crystallin and iNOS are overexpressed in GNE myopathy muscle and may identify early disease mechanisms. The data help to better understand the pathology of GNE myopathy.

Keywords: Cell stress, Nitric oxide, α B-crystallin, Myopathy, Skeletal muscle pathology

Background

GNE myopathy has previously been also termed quadriceps sparing myopathy, hereditary inclusion body myopathy, or distal myopathy with rimmed vacuoles. It is a slowly progressive myopathy that leads to wasting and weakness of distal and proximal muscles [1,2]. The disease mostly begins between the second and fourth decade of life and patients often lose ambulation after a disease course of 12 years or later [3]. Typical

hallmarks of the muscle pathology include formation of vacuoles and tubulofilamentous inclusions by electron microscopy [4]. So far no treatment is available to effectively ameliorate the disease progression [5,6]. Various mutations have been identified in the UDP-N-acetyl-glucosamine 2-epimerase/N-acetylmannosamine kinase (GNE)-gene, a key enzyme of sialylation which is believed to be a major causative factor of the disease pathology [7,8]. Accordingly, mice with a knockout of the GNE gene develop a myopathy with features of GNE myopathy [9]. Moreover, there is evidence of hyposialylation in myoblasts from patients with GNE myopathy [10], yet the precise mechanism of how

* Correspondence: j.schmidt@gmx.org

¹Department of Neurology, University Medical Center, Göttingen, Germany

²Department of Neuroimmunology, Institute for Multiple Sclerosis Research and Hertie Foundation, University Medical Center, Göttingen, Germany

Full list of author information is available at the end of the article

hyposialylation leads to damage of muscle fibers has yet remained elusive.

Inflammation is normally not present in GNE myopathy, although it is a typical hallmark in sporadic inclusion body myositis (sIBM), where it was recently shown that β -amyloid-associated molecules correlate with overexpression of inflammatory mediators [11]. Cell stress molecules such as α B-crystallin and nitric oxide (NO) have recently been identified in conjunction with the β -amyloid-associated pathology of sIBM [12,13]. NO can be produced in large amounts by inducible nitric oxide synthase (iNOS), which can be particularly upregulated under inflammatory conditions [14]. In view of previous evidence of a unique role of NO in GNE myopathy [15,16], we here searched for pro-inflammatory cell stress molecules in the muscle of GNE myopathy patients.

Methods

Patients and muscle biopsies

Diagnostic biopsies were used from skeletal muscle of 10 patients with GNE-mutations between 23–49 years of age, mean age of 33, six women and four men (Table 1). All samples were taken from the collection of the Department of Neuromuscular Research, National Center of Neurology and Psychiatry, National Institute of Neuroscience, Tokyo, Japan.

For the non-myopathic control group, nine muscle specimen were chosen from diagnostic muscle biopsies or orthopedic surgery at the University Medical Center, Göttingen, Germany: We used samples from six women and three men of 41–73 years of age, mean age of 52. The study was approved by the ethics committee of the Universities of Göttingen and Tokyo; an informed consent was not required.

Extraction of RNA and quantitative PCR

Total RNA was extracted from muscle biopsies using a kit (RNeasy from Qiagen, Valencia, CA, USA), following the supplier's instructions. The tissue was homogenized with a plastic tissue grinder and pestle (Kontes Glass

Company, Vineland, NJ, USA) in 350 μ l lysis buffer and the RNA was eluted in 30 μ l water and stored at -80°C .

cDNA synthesis from 200 ng RNA was carried out using SuperScript II reverse transcriptase (Invitrogen, Darmstadt, Germany), following the supplier's instructions. Originated cDNA was stored at -20°C and amplified in a 20 μ l reaction volume with master mix for real-time PCR (Invitrogen) using 6-carboxy-fluorescein (FAM)-labelled probes and specific primers (Applied Biosystems, Carlsbad, CA, USA): Glyceraldehyde-3-phosphate dehydrogenase (GAPDH, s99999905_m1); APP (Hs00169098_m1), TGF- β 1 (Hs00171257_m); IL-1 β (Hs00174097_m1); CCL-3 (Hs00234142_m1); ubiquitin (Hs00430290_m1); CXCL-9 (Hs00171065_m1); α B-crystallin (Hs00157107_m1); NCAM (Hs00169851_m1); desmin (Hs00157258_m1); CCL-4 (Hs00605740_g1); IFN- γ (Hs00174143_m1); TNF- α (Hs00174128_m1); IL-6 (Hs00174131_m1) iNOS (Hs00167257_m1); MHC-I (custom design: forward 5'-TGG AGT GGC TCC GCA GAT AC-3'; reverse 5'-AGT GTG ATC TCC GCA GGG TAG A-3'). Reactions were performed in duplicates on a SDS 7500 Sequence Detection System (Applied Biosystems), following the standard cycle protocol and instructions given by the supplier. The resulting mRNA-expression was quantified using the $\Delta\text{c(t)}$ method in relation to expression of GAPDH mRNA.

Staining of muscle tissue

For immunohistochemistry, 5 μ m frozen sections of all muscle biopsies were fixed either in PFA-methanol (4% PFA for 10 min, followed by methanol for 10 min) for iNOS and P-neurofilament (SMI-31) or in acetone at -20°C for 10 min for all other primary antibodies. Unspecific binding was reduced by 30 min incubation with 5% bovine serum albumin (BSA) and 3% goat serum (all from Jackson ImmunoResearch, West Grove, PA) in PBS. All primary and secondary antibodies were diluted in 1% BSA. Following primary antibodies were used at the respective concentration with an incubation time of one hour at room temperature unless stated otherwise: β -amyloid (mouse clone 6E10, Signet, Dedham, MA) at 10 μ g/ml for 24 hours at 4°C ; MHC class I (rat clone YTH 862.2 from Serotec, Oxford, UK) at 5 μ g/ml; APP (rabbit polyclonal from Serotec, Oxford, UK) at 10 μ g/ml; iNOS (rabbit polyclonal from Chemicon/Millipore, Billerica, MA) at 1/500 dilution; NCAM (mouse clone Eric-1 from Labvision/Neomarkers, Fremont, CA) at 2 μ g/ml; α B-crystallin (rabbit polyclonal from Serotec) at 1/1000 dilution; P-neurofilament (mouse clone SMI-31 from Covance, Princeton, NJ, USA) at 0.5 μ g/ml; IL-1 β (rabbit polyclonal from Abcam, Cambridge, USA) at 1/100 dilution for 24 hours at 4°C .

Consecutive sections of all GNE myopathy patients were double-labelled for 1) APP and MHC-I; 2) NCAM and α B-crystallin; 3) IL-1 β and β -amyloid; 4) iNOS and

Table 1 List of patients with GNE myopathy

Patient	Age	Gender	Mutation	
1	>30	F	D176V	A630T
2	\leq 30	M	V572L	V572L
3	>30	F	V572L	V572L
4	\leq 30	M	D176V	V331A
5	\leq 30	F	V572L	V572L
6	>30	M	V572L	c.769 + 4A > G (exon4 skipping)
7	\leq 30	M	V572L	V572L
8	\leq 30	F	V572L	V572L
9	>30	F	D176V	V572L
10	>40	M	D176V	D176V

The age range at biopsy, gender and mutation details are indicated.

SMI-31, followed by a hematoxylin/eosin histochemistry. Secondary reagents were goat-derived Alexa 594 or Alexa 488 secondary antibodies. Nuclear counterstaining was performed by DAPI for 45 s at 1:50/000, followed by mounting in Fluoromount G (Southern Biotech, Alabama, USA). Digital photography was performed on a Zeiss Axiophot microscope (Zeiss, Göttingen, Germany), using appropriate filters for green (488 nm), red (594 nm) and blue (350 nm) fluorescence, a cooled CCD digital camera (Retiga 1300, Qimaging, Burnaby, BC, Canada) and the ImageProPlus software (MediaCybernetics, Bethesda, MD). Microphotographs of representative and corresponding areas of all serial sections were taken from each patient's sample, yielding between 107 and 498 muscle fibres per patient. The expression of the respective markers was manually identified in a total of 2,817 fibres of all serial sections. A positive staining of individual fibers was judged by comparison with the signal intensities of the same biopsy, other samples from GNE-patients as well as normal control tissue.

Statistics

For statistical analysis (*t*-test, Pearson correlation), **P* < 0.05, ***P* < 0.01 and ****P* < 0.001 were used as significant values and all significant outliers (Grubb's test) were excluded prior to analysis (Graph Pad Prism V4, San Diego, CA, USA).

Results

mRNA-expression of disease relevant markers in GNE myopathy muscle compared to controls

Relevant markers of the β -amyloid-pathway (APP, UBB), muscle degeneration/regeneration (desmin/NCAM), cell-stress (α B-crystallin, MHC-I, iNOS) and inflammation (IFN- γ , IL-1 β , IL-6, TNF- α , TGF- β , CXCL-9, CCL-3, CCL-4) as recently analyzed in sIBM and other inflammatory myopathies and non-inflammatory muscular dystrophy [11] were measured by quantitative PCR. All markers were detectable in GNE myopathy and the highest mean values of expression were noted for the degeneration-/cell stress associated markers α B-crystallin (1.052), desmin (0.315), ubiquitin (0.263), and APP (0.0226) (Figure 1). The mean expression of MHC-I remained at a slightly lower level (0.00925). The fibrosis-associated cytokine TGF- β (0.000407) and the chemokine CXCL-9 (0.000345) displayed a moderate expression level, whereas all other inflammatory mediators and NCAM (0.0494) were expressed at lower levels in most patients. Compared to non-myopathic control muscle, a higher mean expression was noted for APP, NCAM, MHC-I, TNF- α , and TGF- β , but no statistical significance was reached.

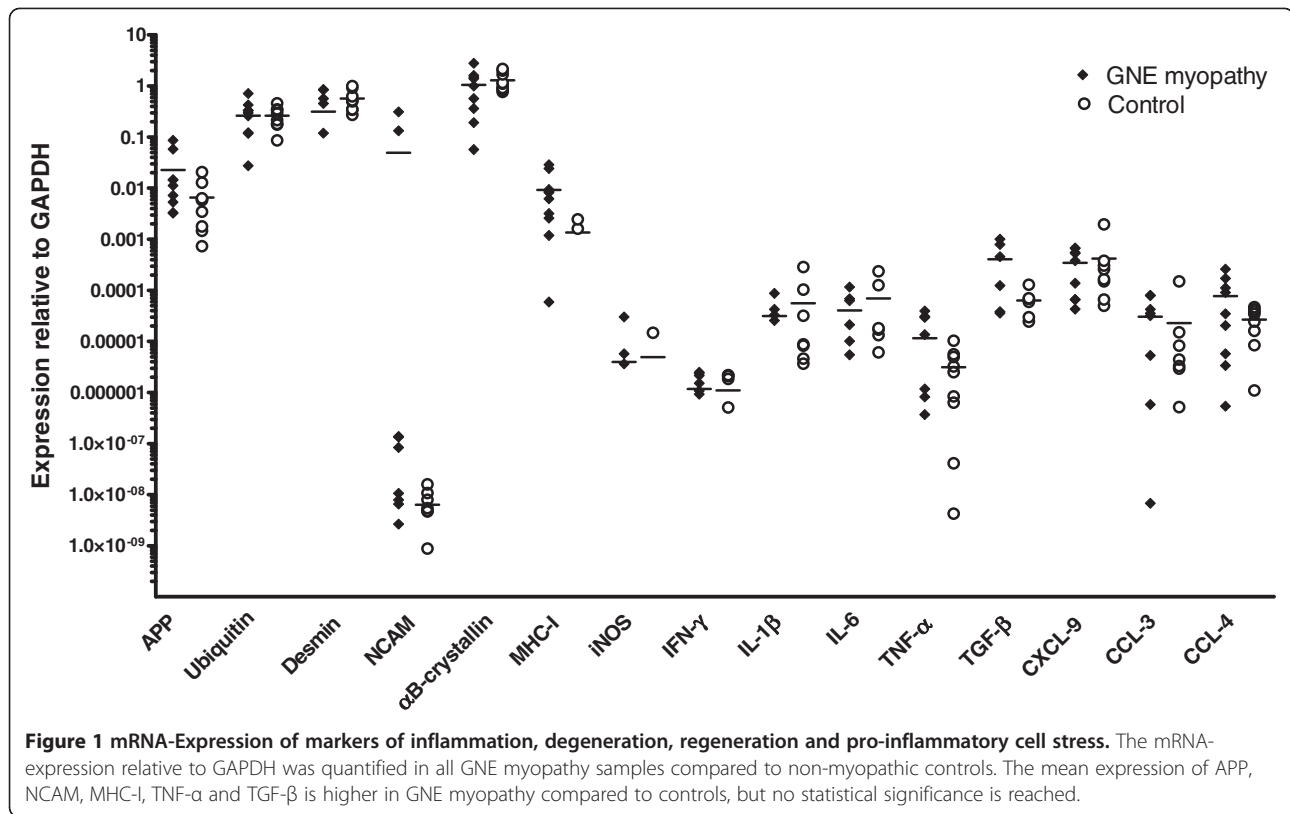
To address interrelationships between β -amyloid associated markers, cell-stress and inflammation, we performed a correlation analysis. As expected, the mRNA-expression of

APP significantly correlated with the tagging molecule ubiquitin (Figure 2A). Moreover, APP was significantly associated with the cell-stress molecule MHC-I and the chemokines CCL-3 and CCL-4. Other markers remained without significant association with APP (not shown). The mRNA-expression of the heat shock protein α B-crystallin significantly correlated with desmin, a marker used to identify e.g. degeneration/regeneration, with the cytokine IL-6, and the chemokine CCL-4 (Figure 2B). Other associations with α B-crystallin did not reach statistical significance (not shown). Within the group of inflammatory mediators, the mRNA-expression of TGF- β significantly correlated with CCL-3 ($r = 0.9786$, $P = 0.0007$), CCL-4 ($r = 0.9469$, $P = 0.0042$) and TNF- α ($r = 0.9080$, $P = 0.0123$) (not shown). No obvious association between the most prevalent mutation V572L vs. other mutations and any of the pathologic markers was noted (not shown).

Collectively, these data demonstrate that markers of β -amyloid-associated pathology, cell-stress and inflammation are present in GNE myopathy muscle and significantly correlate with each other, albeit no significant overexpression could be observed.

Protein expression of relevant markers of the disease

Protein expression was analyzed by serial staining of sections from biopsies of all GNE myopathy patients with immunohistochemical double labeling of 1) APP and MHC-I, 2) α B-crystallin and NCAM, 3) IL-1 β and β -amyloid, and 4) iNOS and P-neurofilament. In a consecutive fifth section, histochemical staining for H&E was performed (Figure 3). By photomicroscopy and manual analysis, all entire cross sections of all 5 stainings from all GNE myopathy patients were quantified with an analysis of a total of 2,817 fibers. The two markers with the highest rate of positive fibers were α B-crystallin with $10.2 \pm 2.0\%$ (mean \pm standard error) of all fibers and iNOS with $16.3 \pm 3.2\%$ of all fibers. NCAM was overexpressed in $4.8 \pm 2.4\%$ and P-neurofilament in $3.8 \pm 1.5\%$, whereas APP, β -amyloid, MHC-I and IL-1 β displayed a much lower expression (Figure 4A). A subtype analysis revealed that over a third of the fibers positive for α B-crystallin were double-positive for NCAM ($33.8 \pm 10.5\%$) and that $23.5 \pm 6.2\%$ were double-positive for iNOS. On the other hand, $15.9 \pm 3\%$ of the iNOS-positive fibers were double-positive for α B-crystallin and $10.7 \pm 4.1\%$ for NCAM. All other markers remained at a lower level. To further address the relevance of cell stress molecules, the correlation of their overexpression as reflected by immunohistochemistry was statistically analyzed. The number of fibers positive for the cell stress molecules iNOS and α B-crystallin highly significantly correlated with each other as well as with MHC-I and NCAM (Figure 4B). No significant association was observed for the other markers and no obvious association with the



most prevalent mutation V572L vs. other mutations and any of the pathologic markers was noted (not shown).

Collectively, these data show that α B-crystallin and iNOS are the most prevalent cell stress markers in GNE myopathy muscle and that they significantly correlate and/or co-localize with other markers of inflammation and cell stress.

Subtype analysis of fibers with or without structural abnormalities

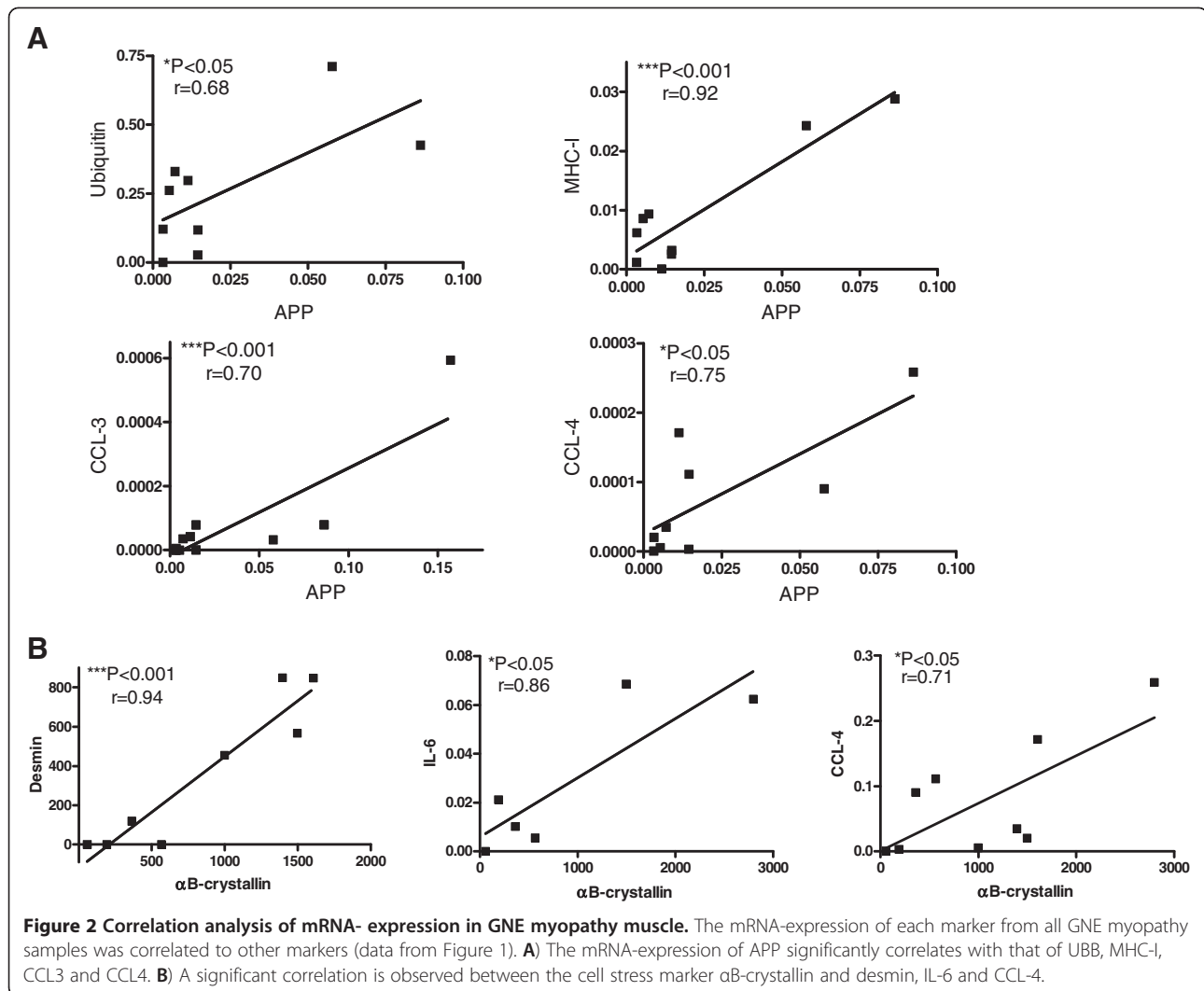
To evaluate early cell stress mechanisms in GNE myopathy muscle, the upregulation of all relevant markers was analyzed in fibers that did not display any signs of morphological abnormalities (Figure 5). The only two markers that were noticeably overexpressed were α B-crystallin ($5.5 \pm 1.3\%$) and iNOS ($10.7 \pm 2.8\%$). 11.7% of the fibers positive for α B-crystallin were double positive for iNOS (data not shown). The other markers remained at a lower level. To further address interrelationships between cell-stress molecules, protein aggregation and muscle degeneration, a subtype analysis of fibers with signs of atrophy or hypertrophy was performed. In atrophic fibers, an overexpression was observed for α B-crystallin with $24.4 \pm 4.7\%$ positive fibers as well as for iNOS with $21.5 \pm 7.0\%$ of the fibers (Figure 6A), whereas all other markers remained at a lower level. In vacuolated fibers, α B-crystallin was present in a fraction of

$20.2 \pm 9.3\%$, followed by iNOS with $11.8 \pm 8.8\%$ (Figure 6B); all other markers were not noticeably upregulated. In hypertrophic fibers, the level of overexpression of iNOS ($8 \pm 2.5\%$), P-neurofilament ($6.8 \pm 4.8\%$) and α B-crystallin ($6.8 \pm 3.9\%$) were comparably elevated in contrast to all other markers that remained at a negligible level (Figure 6C).

Collectively, these data demonstrate that iNOS and α B-crystallin are present in normal appearing fibers and may precede subsequent morphological changes including atrophy, hypertrophy and vacuolar transformation.

Discussion

We here demonstrate that α B-crystallin and iNOS are relevant cell stress markers in the muscle fibers of GNE myopathy patients. They are upregulated in normal appearing fibers as well as in those that had undergone atrophy, hypertrophy or vacuolar transformation. Pro-inflammatory cytokines and chemokines were expressed at levels comparable to control muscles, but some of these mediators were significantly associated with the markers for cell-stress or β -amyloid-associated degeneration. Collectively, our data suggest that a pro-inflammatory cell stress response with overexpression of α B-crystallin and iNOS is present in GNE myopathy muscle and precedes muscle degeneration with accumulation of β -amyloid.



The high frequency of an α B-crystallin signal in morphologically normal fibers is very similar to what has previously been demonstrated in sIBM [12,17] and suggests that an early underlying cell stress response is active in GNE myopathy. Since α B-crystallin has been shown to be important to protect from accumulation of unwanted proteins such as β -amyloid in muscle as well as in the brain [18-20], it is possible that muscle fibers upregulate α B-crystallin in order to downmodulate toxicity of APP and/or oligomers of β -amyloid, which may be present in muscle fibers even in absence of vacuoles or inclusion bodies [12]. This is in line with previous evidence that overexpression of APP in muscle cells led to an upregulation of α B-crystallin [21]. One fifth of the fibers with signs of an end-stage pathology with atrophic morphology and/or vacuoles were accompanied by an overexpression of α B-crystallin. This further substantiates that, once a cell stress response is instigated

in the cells, a subsequent detrimental accumulation of unwanted proteins including β -amyloid will follow. Such an association of protein accumulation and α B-crystallin has previously been demonstrated in the skeletal muscle from patients with other myopathies [22].

Our data demonstrate that NO-related cell stress is present in muscle fibers of GNE myopathy patients, which is in line with previous reports [15,16]. This cell stress response does not appear to be specific to GNE myopathy, but could be an underlying event with relevance to other myopathies: In sIBM, NO has recently been demonstrated to play an important pathogenic role as evidenced by an upregulation of the key NO-producing enzyme iNOS in muscle cells exposed to pro-inflammatory cytokines [13]. In other forms of myositis there is a similar production of NO upon overexpression of iNOS [23-25], which can be upregulated in response to inflammation. Since recent evidence has demonstrated that, in myositis,

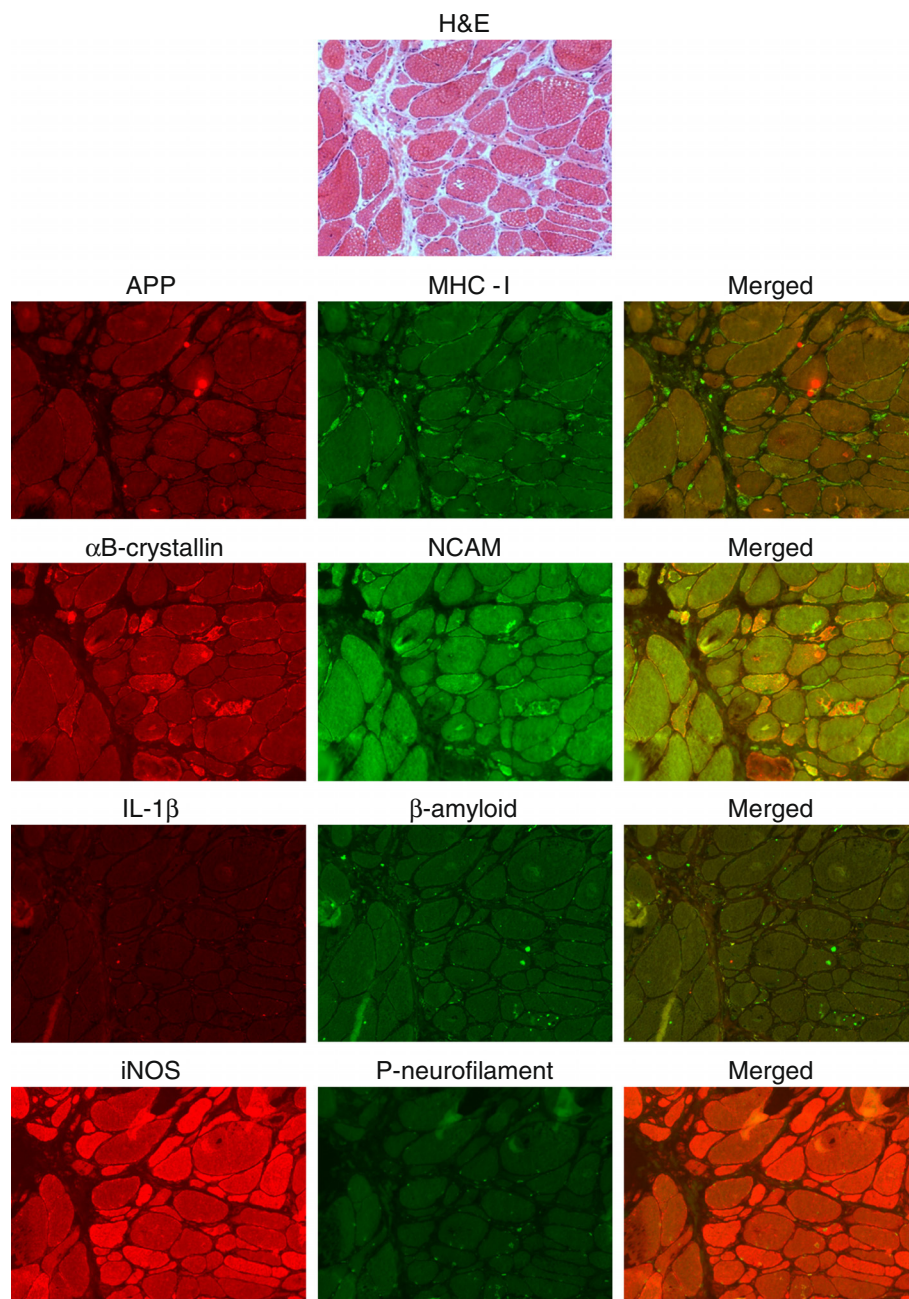


Figure 3 Fluorescent immunohistochemical double-labelling of serial sections in GNE myopathy muscle biopsy specimen. A representative GNE myopathy sample is shown with five consecutive sections that were stained for hematoxylin/eosin (first row); APP (red) and MHC-I (green) (second row); α B-crystallin (red) and NCAM (green) (middle row); IL-1 β (red) and β -amyloid (green) (fourth row); iNOS (red) and P-neurofilament (green) (last row). The highest number of positive staining signal is noted for iNOS, followed by α B-crystallin and NCAM. All other markers are present only in very few fibers.

muscle fibers themselves can produce chemokines and cytokines [11], it is generally possible that a similar overexpression of inflammatory mediators also occurs in GNE-myopathy, even in absence of cellular infiltration. Yet other triggering events are likely to be more relevant in this disorder. It is even possible that NO-stress is

a secondary event to accumulation of APP/ β -amyloid, which would be supported by previous evidence of co-localization of oxidative stress related molecules with vacuoles and intracellular aggregation of proteins such as β -amyloid [16,26]. However, this would be in contrast to our present observation that iNOS is present in a

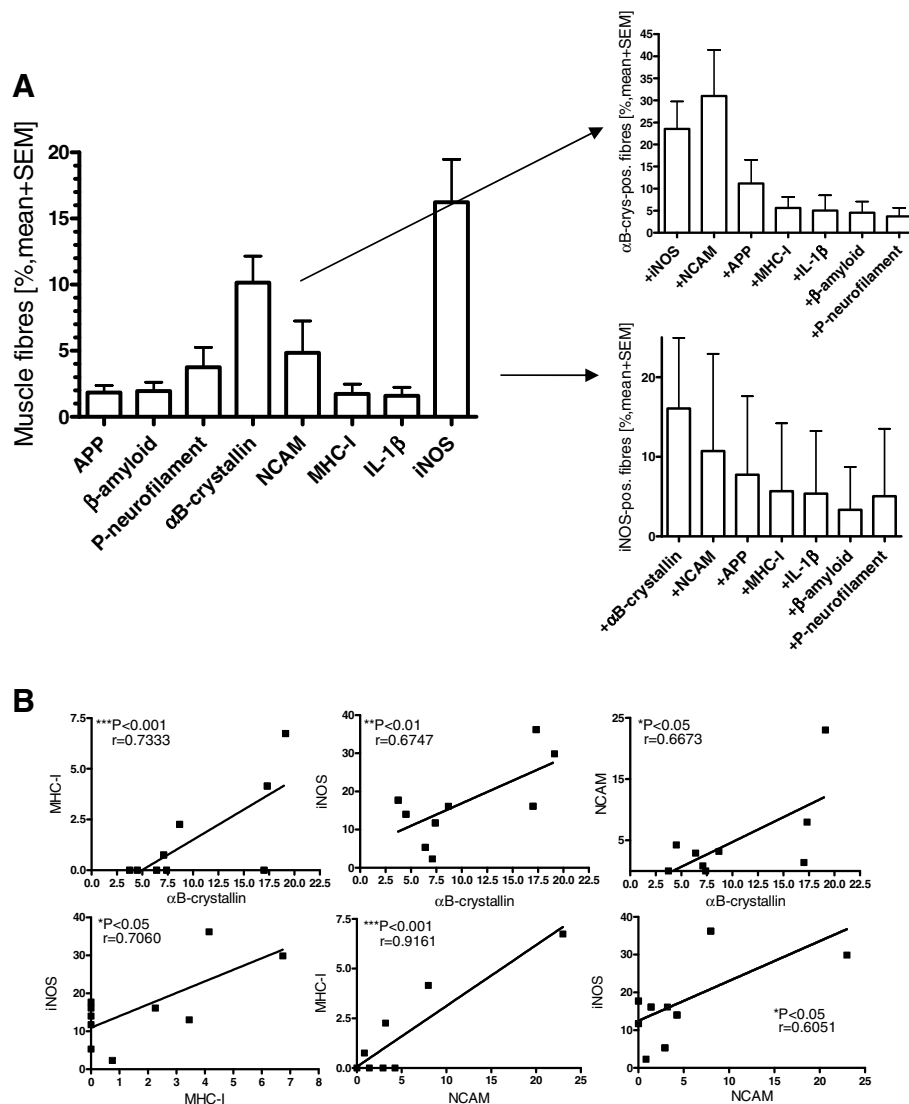
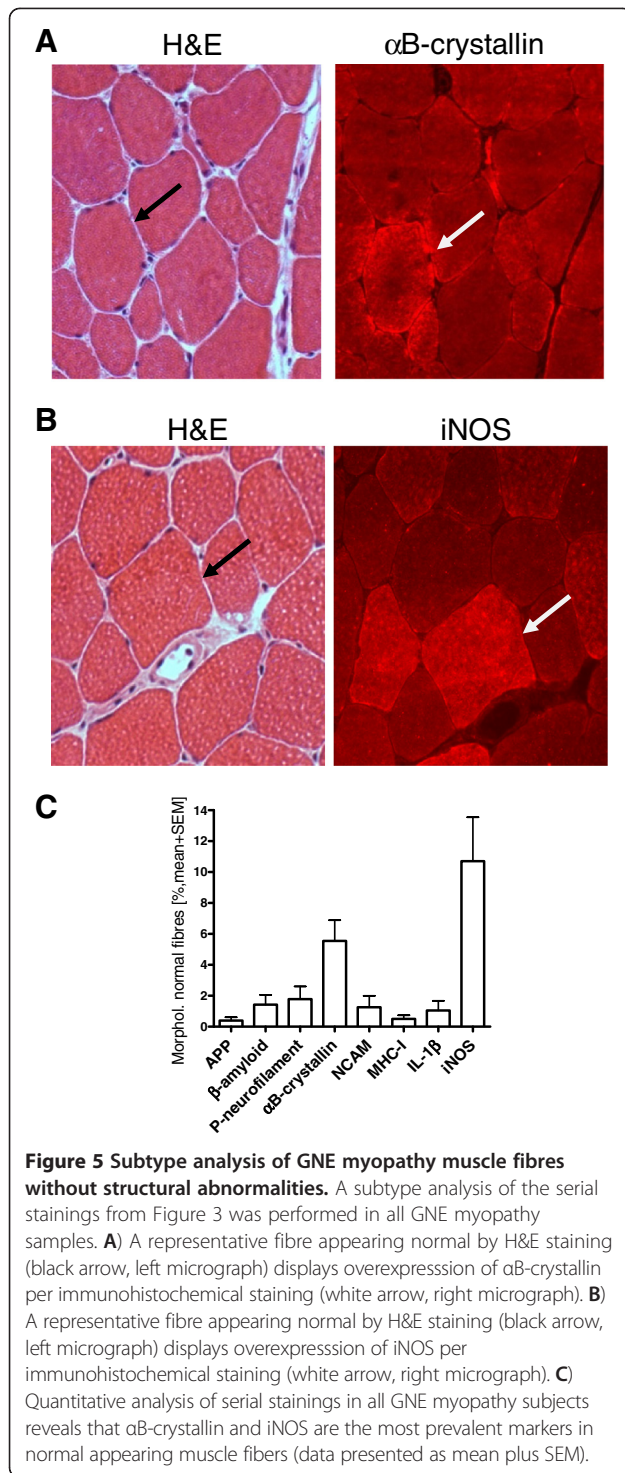


Figure 4 Quantitative assessment of immunohistochemical staining in GNE myopathy. The serial stainings as in Figure 3 were quantitatively assessed in all GNE myopathy samples. **A)** Percentages of all fibres positive for markers of degeneration, inflammation and cell stress in GNE myopathy (left panel, note the highest values for αB-crystallin and iNOS). Subtype analysis of fibres positive for αB-crystallin and iNOS (both panels on the right). Data presented as mean plus SEM. **B)** Correlation analysis of fibres positive for αB-crystallin, NCAM, MHC-I and iNOS by immunohistochemical staining demonstrates a significant association between these markers.

substantial fraction of morphologically normal fibers and, thus, likely precedes vacuolar transformation and protein aggregation. On the other hand it is possible that vacuoles are already present at a different location within the same fiber.

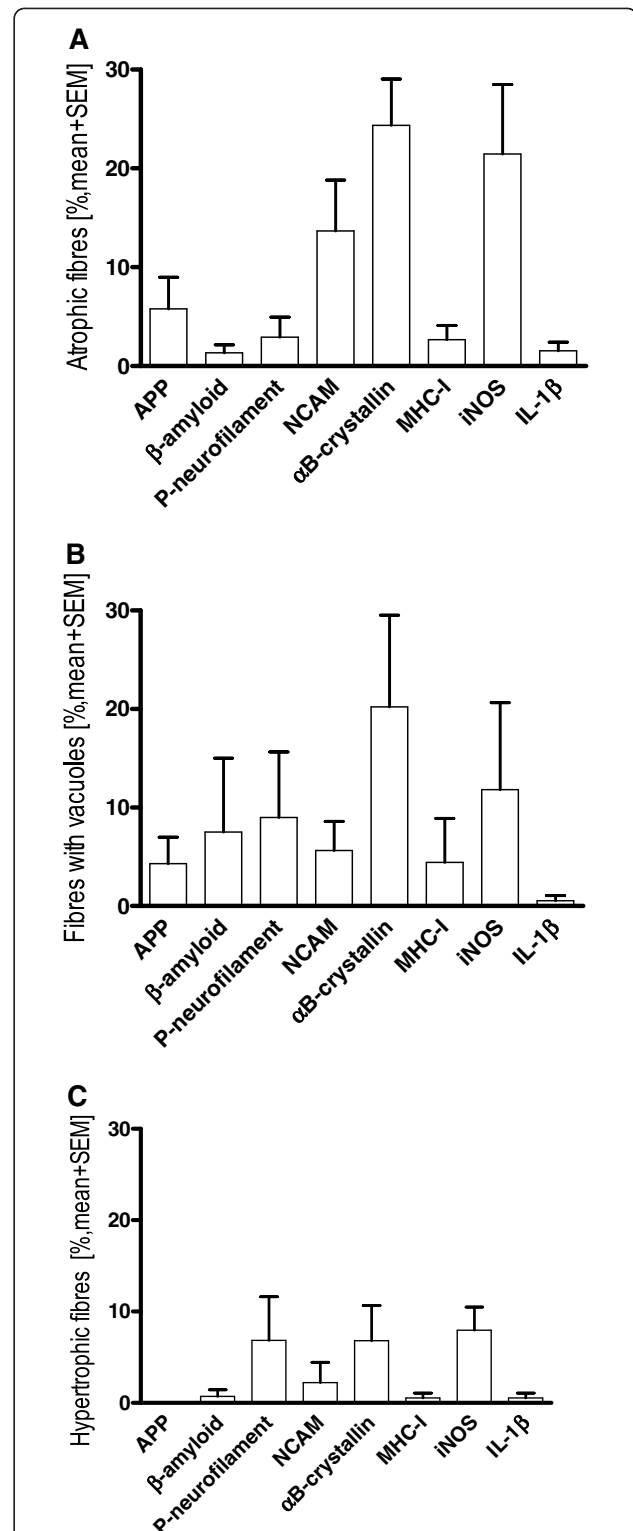
A large fraction of morphologically normal fibers were double positive for αB-crystallin and iNOS, which further suggests that, similar to sIBM, an underlying cell stress response is operative in GNE myopathy muscle fibers. It is possible that similar triggers exist for an overexpression of αB-crystallin as well as for intrafiber-production of NO, but it cannot be excluded that one

follows the other, e.g. that intracellular NO-toxicity leads to an overexpression of αB-crystallin and vice versa. The precise underlying conditions that lead to intracellular damage in GNE myopathy have yet remained elusive. A recent report has demonstrated that impaired sialylation leads to damage of the muscle tissue, which can be improved by sialic acid in a mouse model of the disease [27]. The same mechanism has also been shown to be operative in myoblasts from patients with GNE myopathy [7,10]. Thus, it is likely that hyposialylation precedes and is associated with a cell stress response around αB-crystallin and iNOS in GNE myopathy.



Conclusions

Taken together, we here demonstrate that α B-crystallin and iNOS are early markers of a cell stress response in skeletal muscle fibers of GNE myopathy patients. Their presence and co-localization in normal appearing fibers suggests that they take precedence over accumulation of β -amyloid and formation of vacuoles. Despite absence of



cellular immune response, mRNA-expression of several inflammatory markers is present in GNE myopathy and some of them significantly correlated with α B-crystallin on the one hand and with APP on the other. Further evaluation of cell stress mechanisms in GNE myopathy may help to better understand the pathology of the disease and provide a useful tool for preclinical assessment of treatment strategies.

Competing interests

The authors declare that they have no competing interests.

Authors' contributions

CF, KK, AW, IM, and NK conducted experiments. JS and CF wrote the manuscript. IN interpreted data and assisted in writing. JS designed the study. All authors approved the manuscript.

Acknowledgements

We thank Nicole Tasch and Fatima Betül Agdas for technical assistance. Parts of this study were supported by the Deutsche Forschungsgemeinschaft (DFG, SCHM 1669/2-1 to JS). Support by the Open Access Publication Funds of the Göttingen University is gratefully acknowledged.

Author details

¹Department of Neurology, University Medical Center, Göttingen, Germany.

²Department of Neuroimmunology, Institute for Multiple Sclerosis Research and Hertie Foundation, University Medical Center, Göttingen, Germany.

³Department of Neuropathology, Prion and Dementia Research Unit, University Medical Center, Göttingen, Germany. ⁴Department of Neuromuscular Research, National Institute of Neuroscience, Tokyo, Japan.

Received: 25 September 2012 Accepted: 4 March 2013

Published: 12 March 2013

References

1. Argov Z, Yarom R: "Rimmed vacuole myopathy" sparing the quadriceps. A unique disorder in Iranian Jews. *J Neurol Sci* 1984, **64**:33-43.
2. Sadeh M, Gadoth N, Hadar H, Ben David E: Vacuolar myopathy sparing the quadriceps. *Brain* 1993, **116**:217-232.
3. Nonaka I, Noguchi S, Nishino I: Distal myopathy with rimmed vacuoles and hereditary inclusion body myopathy. *Curr Neurol Neurosci Rep* 2005, **5**:61-65.
4. Broccolini A, Gidaro T, Morosetti R, Mirabella M: Hereditary inclusion-body myopathy: clues on pathogenesis and possible therapy. *Muscle Nerve* 2009, **40**:340-349.
5. Sparks S, Rakocevic G, Joe G, Manoli I, Shrader J, Harris-Love M, Sonies B, Ciccone C, Dorward H, Krasnewich D, Huizing M, Dalakas MC, Gahl WA: Intravenous immune globulin in hereditary inclusion body myopathy: a pilot study. *BMC Neurol* 2007, **7**:3.
6. Nemunaitis G, Maples PB, Jay C, Gahl WA, Huizing M, Poling J, Tong AW, Phadke AP, Pappen BO, Bedell C, Templeton NS, Kuhn J, Senzer N, Nemunaitis J: Hereditary inclusion body myopathy: single patient response to GNE gene Lipoplex therapy. *J Gene Med* 2010, **12**:403-412.
7. Nishino I, Malicdan MC, Murayama K, Nonaka I, Hayashi YK, Noguchi S: Molecular pathomechanism of distal myopathy with rimmed vacuoles. *Acta Myol* 2005, **24**:80-83.
8. Eisenberg I, Avidan N, Potikha T, Hochner H, Chen M, Olender T, Barash M, Shemesh M, Sadeh M, Grabov-Nardini G, Shmilevich I, Friedmann A, Karpatis G, Bradley WG, Baumbach L, Lancet D, Asher EB, Beckmann JS, Argov Z, Mitrani-Rosenbaum S: The UDP-N-acetylglucosamine 2-epimerase/N-acetylmannosamine kinase gene is mutated in recessive hereditary inclusion body myopathy. *Nat Genet* 2001, **29**:83-87.
9. Malicdan MC, Noguchi S, Nonaka I, Hayashi YK, Nishino I: A Gne knockout mouse expressing human GNE D176V mutation develops features similar to distal myopathy with rimmed vacuoles or hereditary inclusion body myopathy. *Hum Mol Genet* 2007, **16**:2669-2682.
10. Noguchi S, Keira Y, Murayama K, Ogawa M, Fujita M, Kawahara G, Oya Y, Imazawa M, Goto Y, Hayashi YK, Nonaka I, Nishino I: Reduction of UDP-N-acetylglucosamine 2-epimerase/N-acetylmannosamine kinase activity and sialylation in distal myopathy with rimmed vacuoles. *J Biol Chem* 2004, **279**:11402-11407.
11. Schmidt J, Barthel K, Wrede A, Salajegheh M, Bahr M, Dalakas MC: Interrelation of inflammation and APP in sIBM: IL-1 beta induces accumulation of beta-amyloid in skeletal muscle. *Brain* 2008, **131**:1228-1240.
12. Muth IE, Barthel K, Bahr M, Dalakas MC, Schmidt J: Proinflammatory cell stress in sporadic inclusion body myositis muscle: overexpression of alphaB-crystallin is associated with amyloid precursor protein and accumulation of beta-amyloid. *J Neurol Neurosurg Psychiatry* 2009, **80**:1344-1349.
13. Schmidt J, Barthel K, Zschuntzsch J, Muth IE, Swindle EJ, Hombach A, Sehmisch S, Wrede A, Luhder F, Gold R, Dalakas MC: Nitric oxide stress in sporadic inclusion body myositis muscle fibres: inhibition of inducible nitric oxide synthase prevents interleukin-1beta-induced accumulation of beta-amyloid and cell death. *Brain* 2012, **135**:1102-1114.
14. Kleinert H, Pautz A, Linker K, Schwarz PM: Regulation of the expression of inducible nitric oxide synthase. *Eur J Pharmacol* 2004, **500**:255-266.
15. Bastian A, Goebel HH: Protein aggregation in inclusion body myositis, a sporadic form among protein aggregate myopathies, and in myofibrillar myopathies—a comparative study. *Rom J Intern Med* 2010, **48**:377-384.
16. Yang CC, Alvarez RB, Engel WK, Heller SL, Askanas V: Nitric oxide-induced oxidative stress in autosomal recessive and dominant inclusion-body myopathies. *Brain* 1998, **121**:1089-1097.
17. Banwell BL, Engel AG: alpha B-crystallin immunolocalization yields new insights into inclusion body myositis. *Neurology* 2000, **54**:1033-1041.
18. Goldfarb LG, Vicart P, Goebel HH, Dalakas MC: Desmin myopathy. *Brain* 2004, **127**:723-734.
19. Fonte V, Kipp DR, Yerg J III, Merin D, Forrestal M, Wagner E, Roberts CM, Link CD: Suppression of in vivo beta-amyloid peptide toxicity by overexpression of the HSP-16.2 small chaperone protein. *J Biol Chem* 2008, **283**:784-791.
20. Wilhelmus MM, Boelens WC, Otte-Holler I, Kamps B, de Waal RM, Verbeek MM: Small heat shock proteins inhibit amyloid-beta protein aggregation and cerebrovascular amyloid-beta protein toxicity. *Brain Res* 2006, **1089**:67-78.
21. Wojcik S, Engel WK, McFerrin J, Paciello O, Askanas V: AbetaPP-overexpression and proteasome inhibition increase alphaB-crystallin in cultured human muscle: relevance to inclusion-body myositis. *Neuromuscul Disord* 2006, **16**:839-844.
22. Ferrer I, Martin B, Castano JG, Lucas JJ, Moreno D, Olive M: Proteasomal expression, induction of immunoproteasome subunits, and local MHC class I presentation in myofibrillar myopathy and inclusion body myositis. *J Neuropathol Exp Neurol* 2004, **63**:484-498.
23. Tews DS, Goebel HH: Cell death and oxidative damage in inflammatory myopathies. *Clin Immunol Immunopathol* 1998, **87**:240-247.
24. Wanchu A, Khullar M, Sud A, Bamberg P: Nitric oxide production is increased in patients with inflammatory myositis. *Nitric Oxide* 1999, **3**:454-458.
25. De Paepe B, Raczy GZ, Schroder JM, De Bleecker JL: Expression and distribution of the nitric oxide synthases in idiopathic inflammatory myopathies. *Acta Neuropathol (Berl)* 2004, **108**:37-42.
26. Tateyama M, Takeda A, Onodera Y, Matsuzaki M, Hasegawa T, Nunomura A, Hirai K, Perry G, Smith MA, Itoyama Y: Oxidative stress and predominant A beta 42(43) deposition in myopathies with rimmed vacuoles. *Acta Neuropathol (Berl)* 2003, **105**:581-585.
27. Malicdan MC, Noguchi S, Hayashi YK, Nonaka I, Nishino I: Prophylactic treatment with sialic acid metabolites precludes the development of the myopathic phenotype in the DMRV-hIBM mouse model. *Nat Med* 2009, **15**:690-695.

doi:10.1186/1471-2377-13-24

Cite this article as: Fischer et al.: Cell stress molecules in the skeletal muscle of GNE myopathy. *BMC Neurology* 2013 **13**:24.