

RESEARCH ARTICLE

Open Access

# The role of flagella and chemotaxis genes in host pathogen interaction of the host adapted *Salmonella enterica* serovar Dublin compared to the broad host range serovar *S. Typhimurium*

John Elmerdahl Olsen<sup>1\*</sup>, Kirsten Hobolt Hoegh-Andersen<sup>1</sup>, Josep Casadesús<sup>2</sup>, Jesper Rosenkrantz<sup>1</sup>, Mark Simon Chadfield<sup>1,3</sup> and Line Elnif Thomsen<sup>1</sup>

## Abstract

**Background:** The importance of flagella and chemotaxis genes in host pathogen interaction in *Salmonella enterica* is mainly based on studies of the broad host range serovar, *S. Typhimurium*, while little is known on the importance in host specific and host adapted serovars, such as *S. Dublin*. In the current study we have used previously characterized insertion mutants in flagella and chemotaxis genes to investigate this and possible differences in the importance between the two serovars.

**Results:** *fliC* (encoding the structural protein of the flagella) was essential for adhesion and *fliC* and *cheB* (*CheB* restores the chemotaxis system to pre-stimulus conformation) were essential for invasion of *S. Dublin* into epithelial Int407 cells. In *S. Typhimurium*, both lack of flagella (*fliC/fljB* double mutant) and *cheB* influenced adhesion, and invasion was influenced by lack of both *cheA* (the histidine-kinase of the chemotaxis system), *fliC/fljB* and *cheB* mutation. Uptake in J774A.1 macrophage cells was significantly reduced in *cheA*, *cheB* and *fliC* mutants of *S. Dublin*, while *cheA* was dispensable in *S. Typhimurium*. Removal of flagella in both serotypes caused an increased ability to propagate intracellular in J774 macrophage cells and decreased cytotoxicity toward these cells. Flagella and chemotaxis genes were found not to influence the oxidative response. The induction of IL-6 from J774A-1 cells depended on the presence of flagella in *S. Typhimurium*, whilst this was not the case following challenge with *S. Dublin*. Addition of *fliC* from *S. Typhimurium* *in trans* to a *fliC* mutant of *S. Dublin* increased cytotoxicity but it did not increase the IL-6 production. Flagella were demonstrated to contribute to the outcome of infection following oral challenge of mice in *S. Dublin*, while an *S. Typhimurium* *fliC/fljB* mutant showed increased virulence following intra peritoneal challenge.

**Conclusions:** The results showed that flagella and chemotaxis genes differed in their role in host pathogen interaction between *S. Dublin* and *S. Typhimurium*. Notably, lack of flagella conferred a more virulent phenotype in *S. Typhimurium* at systemic sites, while this was not the case in *S. Dublin*. *In vitro* assays suggested that this could be related to flagella-induced induction of the IL-6 pro-inflammatory response, but further *in vivo* studies are needed to confirm this.

\* Correspondence: jeo@sund.ku.dk

<sup>1</sup>Department of Veterinary Disease Biology, Faculty of Health and Medical Sciences, University of Copenhagen, Stigbøjlen 4, 1870 Frederiksberg C, Denmark

Full list of author information is available at the end of the article

## Background

The flagellum of *Salmonella enterica* is made up of a single protein, flagellin, which consists of approximately 490 amino acids, and which differs between serovars [1]. For example *fliC* of *S. Dublin* and *S. Typhimurium* shows 38 % identity at the DNA-level (BLASTN 2.2.1, NCBI) and 54 % identity at the amino acid level. *Salmonella* consist of more than 2500 serovars, most of which have two flagellin genes, *fliC* and *fliB*, allowing antigen alteration [2]. The latter has been lost by secondary deletion in some lineages [3], for example *S. Dublin* only expresses flagellin encoded by *fliC*. A recent review suggests an evolutionary model, where *fliC* is the original and preferred gene, and *fliB* is only used under particular environmental conditions [3]. Flagella confer the ability of the bacterium to swim in liquid media. Chemical information received at membrane-receptors influence the rotation of the flagellum motor, thus enabling the bacteria to respond to changes in the external environment by ordered motility. This signal transduction happens through the chemotaxis system (reviewed by Kojima and Blair [4]).

Flagella are recognized as PAMPs (pathogen associated molecular patterns) used by the host to recognize bacteria and besides their function in motility, flagella of *S. Typhimurium* have been shown to stimulate both the innate and adaptive immune system. Extracellular flagella activate toll-like receptor 5 (TLR-5) leading to a pro-inflammatory response with induction of cytokines (reviewed by Kawai and Akira [5]). Soluble flagellin in the cytosol induces pyroptotic cell death (see review by Miao *et al.* [6]) in a caspase-1-dependent manner through activation of the Nod like receptor NLR4. This is in particular relevant in relation to intracellular bacteria, such as *Salmonella*, and a strain of *S. Typhimurium* that was manipulated to be unable to down regulate *fliC* expression intracellular was demonstrated to be attenuated during systemic infection [7].

Conflicting results have been reported on the importance of chemotaxis, flagellation and motility in host pathogen interaction in *Salmonella*. Flagella were found to be important for *S. Typhimurium* invasion of MODE-K and Henle-407 cells, also when centrifugation was applied to maximize bacteria-to-cell contact. Hence the effect was considered unrelated to motility [8]. At the same time point, mutation of *fliC* and mutation of the motor protein *motA* did not to influence intracellular cell numbers of *S. Enteritidis* in CaCo-2 cells [9]. This may, however, be a strain or cell specific response, since mutants of another *S. Enteritidis* strain showed reduced invasion in both Hep-2 and Div-1 cells [10]. Early challenge experiments using C57BL/6J mice reported that flagella, whether functional or not, were virulence factors in *S. Typhimurium*, while chemotaxis genes were

dispensable [11]. However, subsequent studies, with other strains have not been able to confirm the flagella phenotype [8,12]. Flagella but not fimbriae and not motility were found to be essential for *S. Enteritidis* infections in chicken [13], and lack of flagella causes a disadvantage in the early stage of oral infection of rats and in cell culture invasion [14,15].

*Salmonella* serovars have very different epidemiology and life style, just as they display obvious differences with regard to motility and chemotaxis. The commonly studied *S. Typhimurium* infects numerous hosts and displays phase variation of its flagella antigens. The host-specific and host-adapted serovars, on the other hand, infect a single or few hosts, and do not rely on extra-animal survival to any great extent [16]. It may be that motility and chemotaxis play a different role during host pathogen interaction in different serovars, depending on their lifestyle.

The current understanding of the importance of flagella and chemotaxis genes in *Salmonella* host pathogen interaction is derived from studies of *S. Typhimurium* and *S. Enteritidis*, and results based on these serovars are taken as general for the genus. Since the lifestyle differs markedly between ubiquitous serovars and the host-specific/host-adapted ones, we hypothesized that this may be a wrong assumption. In order to investigate this, we characterized the importance of chemotaxis and flagella genes for host pathogen interaction of the host-adapted serovar *S. Dublin* compared to the well-characterized serovar *S. Typhimurium*.

## Results

### Interaction with epithelial cells

*Salmonella* normally infects through the faecal oral route. Several studies have reported that flagella are important for the intestinal phase of infection, mostly based on studies of the initial contact between cultured cells and flagella and motility mutants [8,17]. In this study we compared the adhesion and invasion of a wild type strain of *S. Dublin* to the smooth swimming *cheA* mutant, the tumbling *cheB* mutant and a mutant without flagella (*fliC* mutant). The corresponding mutants of *S. Typhimurium* were used as reference points. The results are shown in Table 1. The *S. Dublin* flagella mutant (*fliC*) was significantly reduced in adhesion and invasion, the constitutively tumbling *cheB* mutant was reduced in invasion, while the constitutively smooth swimming (*cheA* mutation) only showed a slight, non-significant reduction of adhesion and invasion. As can be seen from the Table 1, the flagella phenotype paralleled that of the flagella-less *S. Typhimurium* mutant, while *cheA*-mutation caused significantly reduced invasion and *cheB*-mutation both reduced adhesion and invasion in this serotype.

**Table 1 Adhesion and invasion of *S. Dublin* (SDu) and *S. Typhimurium* (STm) WT and flagella and chemotaxis mutants<sup>a</sup> in cultured epithelial Int407 cells**

Strain	Adhesion (% of wild type)	Invasion (% of wild type)
SDu <i>cheA</i>	47.8 ± 5.6	83.4 ± 8.0
SDu <i>cheB</i>	19.5 ± 7.8	2.4 ± 0.9***
SDu <i>fliC</i>	6.0 ± 3.3***	1.0 ± 0.3***
STm <i>cheA</i>	76.2 ± 33.5	40.8 ± 10.9**
STm <i>cheB</i>	15.6 ± 2.7***	1.2 ± 1.3***
STm <i>fliC/fljB</i>	12.5 ± 1.9***	0.4 ± 0.3***

a: Performance of mutant strains was compared statistically to the wild type strain of the same serovar. \*\*: p<0.01; \*\*\*: p<0.001. The inoculum of each strain was between Log<sub>10</sub> 7.9 and Log<sub>10</sub> 8.2 with no significant difference between strains.

### Uptake and survival inside macrophages

Once *Salmonella* has invaded the host, professional phagocytic cells quickly take up the bacteria. Especially the uptake by macrophages has been considered important, deduced from the fact that all *S. Typhimurium* mutants that are attenuated for macrophage survival have turned out to be non-virulent in challenge experiments [18]. To investigate whether macrophage interaction depended on the presence of flagella and chemotaxis genes, we conducted experiments with cultured J774A.1 cells. The results are shown in Table 2. *S. Dublin* strains with mutation in *cheA*, *cheB* and *fliC* were taken up by macrophages in significantly lower numbers than the wild type strain. The mutants of *S. Typhimurium* were found to have the same general uptake phenotypes, however, the differences between the wild type strain and the *cheA* mutant were not significant. All strains increased in numbers from 3 to 24 hours, but due to relatively large standard deviations, only the difference in net growth of the *S. Typhimurium fliC/fljB* mutant was statistically different from that of the wild type strain. At 48 hours, wild type and chemotaxis mutants decreased in

numbers, however, the *cheB* mutant of *S. Typhimurium* was significantly less reduced compared to the wild type strain. Contrary to this, flagella-less mutants of both serotypes showed net growth, but only the *S. Typhimurium* strains was significantly different from the wild type strains.

### Cytotoxicity towards macrophage cell line J774A.1

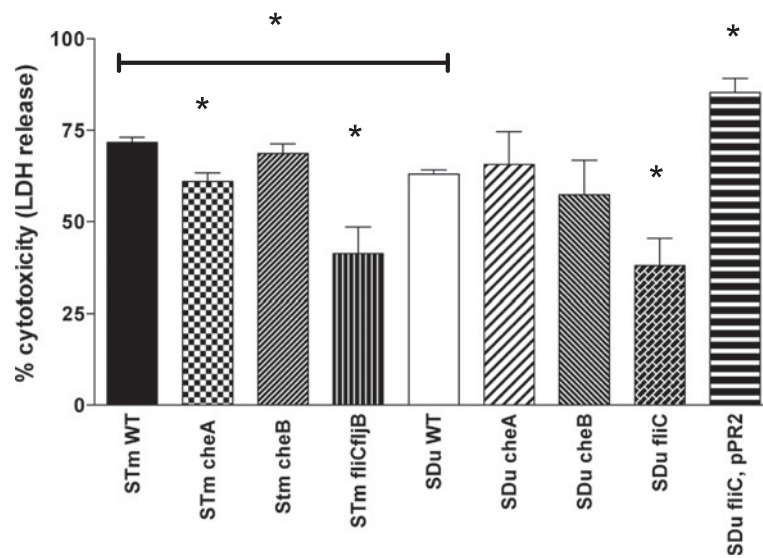
Results of the macrophage assays above may be influenced by cytotoxicity of the strain, since strains that kill the macrophages subject themselves to the action of the antibiotic gentamicin in the culture medium. A comparison of cytotoxicity towards the J774A.1 cells after 24 hours is shown in Figure 1. The non-flagellated mutants of *S. Dublin* and *S. Typhimurium* were less cytotoxic than the wild type strains, in line with previous observations that flagella influence *Salmonella* induction of macrophage cell death [19]. The net growth of flagella mutants in the survival assays above could thus be a result of decreased killing of macrophages. The chemotaxis mutants of *S. Dublin* did not differ significantly from the wild type strain, while the *cheA* mutant of *S. Typhimurium* was slightly, but significantly, less cytotoxic than the wild type strain.

Wild type *S. Dublin* was less cytotoxic than wild type *S. Typhimurium* (Figure 1). To investigate whether this was related to the flagella type, we provided the *fliC* mutant of *S. Dublin* with *S. Typhimurium fliC in trans* on the plasmid pPR2. The *fliC* mutant itself was negative with H:*p,g* (*S. Dublin* flagella antigen) and H:*i*, H:2 (*S. Typhimurium* flagella antigen) by serotyping and Western blot, while the complemented strain was positive with H:*i* and H:2 typing sera. It was non-motile but expressed a high number of flagella as demonstrated by electron microscopy (data not shown). It did not differ significantly from the wild type strain in interactions with epithelial cells or macrophages (data not shown).

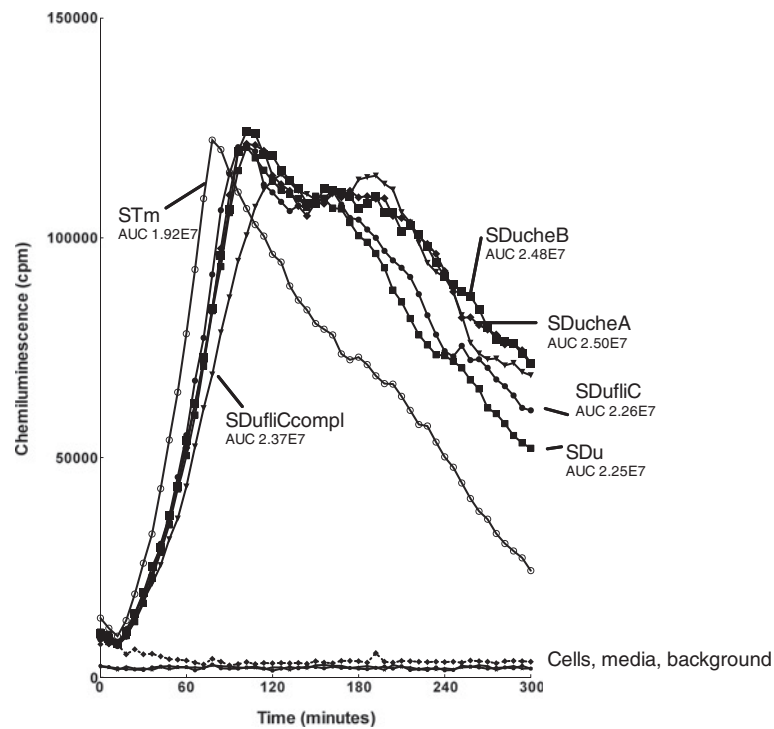
**Table 2 Uptake and survival of *S. Dublin* 3246 (SDu) and *S. Typhimurium* (STm) wildtype and flagella and chemotaxis mutants in cultured J774A.1 macrophages<sup>a</sup>**

Strain	Uptake 3h (Percent of wild type strain)	Survival 24 h (Percent of same strain at 3h)	Survival 48 h (Percent of same strain at 3 h)
SDu WT	100	124.1 ± 43.5	20.7 ± 4.7
SDu <i>cheA</i>	53.9 ± 15.1**	279.8 ± 65.8	53.8 ± 16.5
SDu <i>cheB</i>	1.4 ± 1.0**	307.7 ± 90.2	248.8 ± 39.8
SDu <i>fliC</i>	1.0 ± 0.2***	450.5 ± 255.0	615.3 ± 325.8
STm WT	100	114.0 ± 42.6	2.8 ± 1.72.8
STm <i>cheA</i>	72.4 ± 22.4	100.2 ± 31.0	12.2 ± 3.1
STm <i>cheB</i>	19.0 ± 9.3**	309.8 ± 231.5	81.7 ± 6.9*
STm <i>fliC/fljB</i>	0.2 ± 0.1***	490.9 ± 111.6*	702.9 ± 53.0***

a: Uptake of mutant strains was expressed relatively to and compared statistically to the wild type strain of the same serovar. Survival at 24 and 48 hours was expressed relatively to the number of bacteria determined at 3 hours and compared statistically to the survival capability of the wild type strain of the same serotype. \*: p<0.05; \*\*: p<0.01 \*\*\*: p<0.001.



**Figure 1 Cytotoxicity of strains of *S. Dublin* (SDu) and *S. Typhimurium* (STm) in J774A.1 macrophages.** Cytotoxicity was measured 24 hours post challenge with flagellar (SDu *fliC* and STm *fliC/fliB*) and chemotaxis mutants (*cheA* and *cheB*) and the wild type strains. Significant ( $p < 0.05$ ) differences between wild type and mutant strains are shown with \*. The cytotoxicity of the two wild type strains was also compared, and this was shown to be statistically different, as indicated by the \* in the top of the figure.



**Figure 2 Oxidative responses of J774A.1 macrophages following challenge with wild type and chemotaxis and flagella mutant of *S. Dublin* (SDu) and *S. Typhimurium* (STm).** The response is measured in arbitrary chemiluminescence units. Positive and negative controls are indicated.

The complemented *fliC* mutant of *S. Dublin* was significantly more cytotoxic than the wild type strain of *S. Dublin*, above the level of the wild type strain of *S. Typhimurium* (Figure 1).

#### The importance of chemotaxis and flagella genes for induction of oxidative burst in macrophages

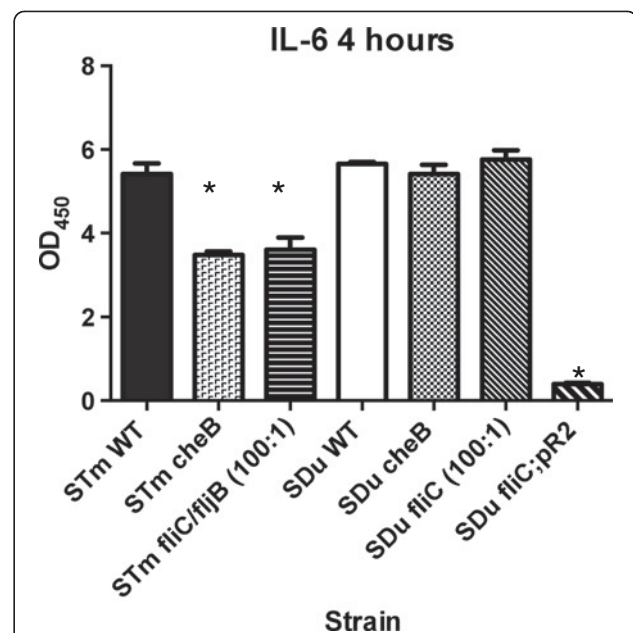
The ability of the strains to stimulate the oxidative burst in J774A.1 cells was investigated. Wild type strains differed in induction of oxidative response in the sense that the wild type strain of *S. Typhimurium* peaked early compared to the wild type strain of *S. Dublin*, and showed a significantly lower area under the response curve (AUC). Only relative small differences in the oxidative burst were observed between *S. Dublin* wild type and mutant strains, and none of the differences were statistically significant (Figure 2). Knock out of flagella and chemotaxis genes also did not influence the oxidative burst significantly in *S. Typhimurium* (data not shown). When the *S. Dublin fliC* mutant was complemented with *S. Typhimurium fliC*, the response peaked later but the magnitude of response (AUC) was not affected (Figure 2).

#### Induction of cytokines IL-6 response in cultured J774A.1 macrophages

As mentioned in the introduction, flagellin has been reported to stimulate a pro-inflammatory response with induction of cytokines including IL-6 [5]. We wanted to investigate how the IL-6 response depended on the presence of flagella and chemotaxis genes. After 1 hour, no significant IL-6 production was seen in any of the strains (data not shown), however, after 4 hours, strains of both serovars had induced a strong production of IL-6 (Figure 3). In *S. Typhimurium*, mutation in both flagella genes independently or together, as well as mutation of *cheB*, caused a reduced IL-6 response, while surprisingly, lack of flagella did not cause a reduction in *S. Dublin*. IL-6 levels following challenge of cells with ten times higher doses of *S. Typhimurium fliC/fljB* and *S. Dublin fliC* mutants did not change the responses compared to the normal challenge dose. Complementation of *fliC* in *S. Dublin* with *fliC* from *S. Typhimurium in trans* caused a dramatic reduction of IL-6 from the infected macrophages.

#### Oral and intra peritoneal challenge of mice

The chemotaxis mutants did not differ significantly from the wild type strains following oral challenge. The *S. Dublin fliC* mutant showed lower CFU in the spleen 4–5 days post challenge (CI: 0.46 ( $p < 0.01$ )), while the *S. Typhimurium fliC/fljB* mutant did not differ markedly from the wild type strain (CI: 1.12), however, the difference was statistically significant. Lack of flagella has



**Figure 3** Induction of IL-6 response in J774A.1 cells 4 hours post challenge with wild type and chemotaxis and flagella mutants of *S. Dublin* and *S. Typhimurium*. *cheA* mutants that had not given any phenotype in cell culture and mice assays were omitted from this analysis. As a control for level of uptake, the cells were challenged with flagella mutants of both serovars with MOIs of both 10:1 and 100:1. Results from the two testings were not significantly different. Only 100:1 results are shown in the figure. Significant ( $p < 0.05$ ) differences to the wild type strain of the same serovar are indicated by \*.

been reported to increase fitness of *S. Typhimurium* during systemic infection of mice [8]. We therefore also investigated the importance of flagella genes using intra peritoneal challenge, thereby bypassing the intestine. The *S. Typhimurium fliC/fljB* mutant showed increased numbers of bacteria in the spleen (CI: 1.78;  $p < 0.0001$ ), which corroborates previous studies [8]. The corresponding flagella-less *S. Dublin* mutant did not show this phenotype (CI: 0.91) (Table 3).

#### Discussion

In the current study we used chemotaxis and flagella mutants of the host adapted serovar *S. Dublin* and corresponding mutants of the broad host range serovar *S. Typhimurium* to study possible serovar differences in the importance of these genes for host pathogen interaction. The studies were based on defined mutants in one strain of each serovar, and we cannot rule out that there may be strain differences within serovar.

The constitutively tumbling *cheB* *S. Dublin* mutant, but not the constitutively smooth swimming *cheA* mutant, was negatively affected in invasion of epithelial cells. Since *cheA* has previously been shown to be important for *S. Typhimurium* cell invasion [20], which we



**Table 3 Virulence phenotypes of flagella and chemotaxis mutants of *S. Dublin* (SDu) and *S. Typhimurium* (STm) in C57/B6 mice**

Mutant	Challenge route <sup>a</sup>	CI <sup>b</sup> S.Du	CI <sup>b</sup> STm
<i>cheA</i>	p.o.	1.03	1.09
<i>cheB</i>	p.o.	0.97	1.05
<i>fliC</i>	p.o.	0.46**	-
<i>fliC</i>	i.p.	0.91	-
<i>fliC/fljB</i>	p.o.	-	1.12**
<i>fliC/fljB</i>	i.p.	-	1.78***

a: p.o. = per oral challenge; i.p. = intraperitoneal challenge.

b: The competitive index was calculated as the ratio of mutant to wild type in the spleen 4–5 days post infection divided by the ratio of mutants to wild type strain in the input pool. Indexes where the output was significantly different from the input pool are marked with \*\* (p<0.01) and \*\*\* (p<0.001).

also observed in our studies, *S. Typhimurium* and *S. Dublin* apparently differ with respect to the role of *cheA* in epithelial cell invasion. Lack of flagella (*fliC* mutation) caused reduced adhesion, which is in accordance with previously reported results for the effect of *fliC/fljB* mutation in *S. Typhimurium* [17] and our observations on the role of flagella in this serotype.

It has previously been reported that it is the flagella and not motility, which are important for cell adhesion and invasion [17], but it is currently unknown how precisely flagella influence this in a motility independent way, at least in cell culture experiments. Since we used centrifugation to maximize cell contact, it is also unlikely that our results were caused by reduced motility, which would lead to a reduction in number of contacts between bacteria and cells. Flagella in *S. Typhimurium* are expressed inside epithelial cells and can be demonstrated in infected cultured HeLa cells [21]. During *in vivo* invasion, the stimulation of TLR-5 by flagellin and the following pro-inflammatory response may be important. However, invasion by *S. Typhimurium* in cell culture experiments happens within 15 minutes [22], and it is unlikely to be influenced by secretion of stimulating factors. A more likely explanation is down-regulation of SPI1 in flagella mutants, as suggested by Kim *et al.* [23]. This down regulation can be caused by several regulatory systems, which control both flagella and virulence gene expression [24,25].

Whether motility *per se* can be ruled out as important for invasion is still controversial since motility was shown to be essential for invasion of *S. Typhi* into cultured epithelial cells [26]. A recent study with *S. Typhimurium* also suggests a requirement for motility in infection of epithelial cells. The invading population was demonstrated to consist of two populations. Some cells were only infected with few bacteria, which did not multiply to any great extent. These bacteria showed down-regulation of SPI-1 and *fliC* transcription. A

fraction of approximately 10% of cells, however, was infected with bacteria that were motile, expressed invasion genes, possessed flagella, and multiplied at high rate. A speculation is that these cells may be ready to re-enter the lumen of the intestine to re-infect other cells [22]. Whether a similar picture can be seen for *S. Dublin* remains to be investigated.

Similar to invasion into epithelial cells, mutation of chemotaxis and flagella genes caused reduced uptake by macrophage cells. The reason for this is unknown. The flagella and chemotaxis genes are down regulated once *S. Typhimurium* is inside a macrophage [27], probably to prolong the time the bacterium can stay inside the macrophage protected from neutrophil killing in the extracellular environment [7]. The intracellular down regulation is controlled by the gene *ydiV*, which prevents transcription of the flagellin promoter [28]. It is currently unknown how *S. Dublin* regulates its flagella expression in response to macrophage uptake. Despite the down regulation, flagella of *S. Typhimurium* are important for the outcome of the systemic phase of an infection, since lack of flagella leads to a decrease in the percentage of CD14+ and CD54+ cells resulting in a reduction of uptake of soluble antigens by these cells and fewer bacteria accumulating intracellularly [29,30]. Flagellin induces I- $\kappa$ B $\alpha$  degradation and subsequent NF- $\kappa$ B nuclear translocation, and induction of nitric oxide synthase [31–33]. This induces rapid *de novo* synthesis of tumour necrosis factor alpha (TNF- $\alpha$ ), interferon gamma (IFN- $\gamma$ ), interleukin-1 $\beta$  (IL-1 $\beta$ ) followed by IL-6 and IL-10, which is typical for a systemic inflammatory response.

Lack of flagella was found to allow net growth inside the macrophages over a 48 hours period, while wild type and chemotaxis mutant strains were reduced in numbers. The SPI-1 encoded type three-secretion system and flagella are important for rapid host cell death by pyroptosis seen after cell infection with *S. Typhimurium* [19]. In the present investigation, lack of flagella caused reduced extracellular levels of lactate dehydrogenase, the intracellular enzyme used as an indicator of macrophage cell death, and this reduced killing can be the reason for the net growth observed with flagella-less mutants. The present investigation does not allow us to conclude which underlying mechanism that was responsible for the reduced cell death when flagella were absent. Wild type *S. Typhimurium* was significantly more cytotoxic than *S. Dublin*. When *S. Dublin* expressed *S. Typhimurium fliC*, the cytotoxicity increased above *S. Typhimurium* levels. This indicates that *fliC* is important for the level of cytotoxicity, however, the complemented strain used to show this had a higher number of flagella than the wild type strain, and we cannot rule out that this causes the increase in cytotoxicity. The plasmid used for complementation was based on pMF3, which

has previously been used to complement knock out phenotypes in *S. Typhimurium* without adverse effects [34]. More detailed studies are needed to demonstrate how these serotype differences relate to differences in the flagella sequence.

Significant cytokine production is generally assumed to require phagocytosis of the bacteria [35]. This corresponds to uptake in our assays, and as pointed out by Winther *et al.* [36] knock out mutants are not well suited to distinguish between lack-of-stimulation and lack-of-internalization responses. The flagella mutant of *S. Typhimurium* caused a reduced IL-6 cytokine production, but it also showed reduced uptake. We therefore included a control experiment where a 10 times higher challenge dose of the flagella mutant was used. The high challenge dose did not increase the IL-6 production, indicating that the lack of response was most likely not related to invasion levels. In support of this conclusion, the *fliC* and *cheB* mutants of *S. Dublin* also showed significantly reduced invasion, but absence of these genes in *S. Dublin* did not influence cytokine production. This result points to a fundamental difference between *S. Dublin* and *S. Typhimurium* in the way the flagella stimulates the host response, and calls for more detailed studies on structural functional relations in the signaling to the host.

The *S. Dublin fliC* mutant with *S. Typhimurium* provided *in trans* induced a lower response than the wild type strain. This result was surprising. Its phenotype is similar to a *motA* mutation, i.e. structurally the flagella appears normal, but they do not move. Naturally occurring *motA* mutants of *S. Enteritidis* stimulated transcriptional pro-inflammatory responses in Caco-2 cells [37], and there is no obvious reason why the complemented *S. Dublin* strain should not do the same. In cell culture experiment, a *motA* mutant of *S. Typhimurium* was non-invasive [19], which differs from the phenotype of our complemented mutant, and further studies are needed to clarify this observation.

Lack of stimulation of IL-6 expression has previously been seen with the host-specific serovar *S. Gallinarum* in a comparison to *S. Typhimurium* and *S. Enteritidis* after infection of a primary chicken cell line [38]. No control was included in that study for the fact that *S. Gallinarum* contrary to *S. Typhimurium* and *S. Enteritidis* lacks flagella. Our results indicate that lack of IL-6 induction may be a general feature of host adapted/ host specific serotypes. Host specific serovar has been speculated to perform stealth like infection (i.e. down regulates several host responses) in comparison to the ubiquitous serovars [39]. The lower cytotoxicity and lack of IL-6 responses support this assumption. In contrast to the role in IL-6 induction, none of the mutants differed significantly from the wild type strains in induction of oxidative

responses. This result suggested that flagellin was not important for induction of the oxidative response.

Results on the role of flagella and chemotaxis genes in *Salmonella* host pathogen interaction have been contradictory (compare [12] and [8] with [11]), and we purposely looked for a sensitive assay to show subtle differences between strains. Co-infection assays have been shown to be more sensitive than assays where strains are tested individually [40]. Using this assay, we found that flagella significantly influenced the number of bacteria that could be isolated from the spleen 4–5 days post oral infection of mice with *S. Dublin*, but not with *S. Typhimurium*. Chemotaxis genes were found to be dispensable in this assay, as previously reported for *S. Typhimurium* [11]. Animal welfare regulations dictated us to scarify mice when they were severely affected by infection, and this prevented us from using one single end-point of infection. Potentially, this may have influenced the competitive indexes for *S. Typhimurium*, since this serovar propagated at different speed at systemic sites depending on the presence of flagella genes (see below). However, all mice were killed within a 24 hours period, and we do not believe that this significantly influenced our results.

Like *cheA* mutation, mutation of *cheR* confers a constitutively smooth swimming phenotype. We have not included this gene in our investigation, and we cannot rule out that it may have a different role in host pathogen interaction than *cheA*. We have performed preliminary testing of an *S. Dublin cheR* mutant and found that it corresponds to *cheA* with respect to phenotypes in cell assays and oral challenge of mice (unpublished), however, we do not have *S. Typhimurium* results to compare it to.

Flagella have been found to be important for the outcome of oral infection with *S. Typhimurium* in streptomycin treated mice, which is a model for studies of the entero-patogenesis of *Salmonella* [41]. In this model flagella are essential for initiation of inflammation, creating an environment in which *Salmonella* prevails over the normal flora, and in this model, chemotaxis genes were also essential for the outcome of infection. Cattle are the natural host for *S. Dublin*, and in addition to differences caused by the choice of animal model, studies have shown that virulence factors may differ depending on the host [42]. This must be taken into account when concluding on the current results. The changes in virulence observed when flagella were removed were relatively modest. We have previously demonstrated that flagella do not play an important role during extra animal survival [43], and we believe that selection for stable maintenance of the flagella apparatus must happen during the interaction with the host. It thus appears that these small differences are enough to provide the selective force.

It has previously been reported that a flagella mutant of *S. Typhimurium* is hyper virulent following intraperitoneal challenge of mice [8] and we confirmed this result. In contrast, the *S. Dublin* flagella mutant was not different from the wild type strain after intraperitoneal challenge. In conjunction with the results of IL-6 induction and cytotoxicity, this indicates that flagella are most important for *S. Dublin* in the initial invasion phase in the intestine, while it plays a minor role during the systemic phase. We suggest that a likely explanation for the contradicting results on the role of flagella in virulence of *S. Typhimurium* is that the results depends very much on the time point where bacterial load is measured. At early time points, lack of flagella causes a lower invasion, but at later time points, this is balanced by a higher ability to grow in the systemic phase.

## Conclusion

The results show that flagella but not chemotaxis genes influence the outcome of *S. Dublin* infection following oral challenge in the mouse model, and that *S. Dublin* flagella do not appear to be important during the systemic phase of infection. This points to fundamental differences in bacteria host signalling between *Salmonella* serotypes, and shows that results from studies of *S. Typhimurium* cannot be assumed to be general to the genus.

## Methods

### Strains and growth conditions

Well characterized flagella and chemotaxis insertion mutants of *S. Dublin* 3246 and *S. Typhimurium* 4/74 (Table 4) were obtained from a previous study [43]. The pMF3 derived plasmid pPR2 (TH2422) encoding *S. Typhimurium fliC* was kindly provided by Dr. Kelly T. Hughes, Washington University, Seattle, USA and was used to provide this gene *in trans* to *S. Dublin*. Plasmid extraction was performed with the QIAgen purification

kit, as described by the manufacturer and electroporation was carried out as described by Maloy *et al.* [44].

Unless otherwise stated, strains were cultured in LB broth (Difco) overnight at 37°C. Stock cultures were maintained frozen at -80°C in LB supplemented with glycerol (33 % w/v). To prepare inoculate for *in vivo* and *in vitro* studies, stocks were thawed and inoculated on LB-agar containing 1,5% agar (Difco) and plates were incubated overnight at 37°C. Single representative colonies were inoculated into fresh LB broth and incubated overnight at 37°C. Media were supplemented with relevant antibiotics (Sigma) at concentrations: kanamycin (50 µg/ml), tetracycline (20 µg/ml), ampicillin (50 µg/ml) and chloramphenicol (20 µg/ml).

### Motility measurement

Motility was assayed in Heart Infusion broth with 0.25 % agar (Difco) and on Swarm agar (Statens Serum Institute, DK) as described [43].

### Expression of flagella antigens

Serotyping was performed as previously described [43]. Western blot was performed using NuPAGE™ 12,5% Tris-HCl gels (Novex) as instructed by the manufacturer and specific flagella antisera (H:i, H:2 or H:p,g), (Statens Serum Institute (SSI), Denmark).

### Demonstration of flagella by electron microscopy

To demonstrate flagella, bacteria were negatively stained with uranyl acetate 2% and examined by transmission electron microscopy at an instrumental magnification of 27500.

### Adhesion and survival properties *in vitro*

Comparison of *in vitro* adhesion, invasion (uptake) and survival of bacteria inside cells was performed using the epithelial cell line Int407 and the macrophage-like cell line, J774A.1, as previously described [46]. Before experiments with macrophages, bacteria were opsonised with

**Table 4 Bacterial strains and their motility phenotypes**

Strain	Description; Relevant genotype	Motility phenotype	Source
JEO 3774	Wild-type <i>Salmonella</i> Typhimurium 4/74	Wild type	[45]
JEO 3665	Wild-type <i>Salmonella</i> Dublin 3246	Wild type	[45]
JEO880	JEO 3774 ( <i>cheA</i> ::Tn10 <sup>a</sup> )	Smooth	[43]
JEO881	JEO 3774 ( <i>cheB</i> ::Tn10 <sup>a</sup> )	Tumbling	[43]
JEO885	JEO 3774 ( <i>fliC</i> ::MudJ; <i>fliB</i> ::MudJ <sup>c</sup> )	None	[43]
JEO886	JEO 3665 ( <i>fliC</i> ::MudJ <sup>b</sup> )	None	[43]
JEO887	JEO 3665 ( <i>fliC</i> ::MudJ; pPR2 <sup>d</sup> )	None	This study
JEO888	JEO 3665 ( <i>cheA</i> ::Tn10 <sup>a</sup> )	Smooth	[43]
JEO889	JEO 3665 ( <i>cheB</i> ::Tn10 <sup>a</sup> )	Tumbling	[43]

<sup>a</sup> Tet<sup>r</sup>; <sup>b</sup> Kan<sup>r</sup>; <sup>c</sup> Chloram<sup>r</sup>; <sup>d</sup> Kan<sup>r</sup>,Amp<sup>r</sup>; <sup>e</sup> Kan<sup>r</sup>,Chloram.<sup>r</sup>



10 % heat treated foetal calf serum (Invitrogen) for 30 min at 37°C prior to addition to the cells. Infections were performed at a multiplicity of infection (m.o.i.) of 10:1 with the macrophage cell line and 100:1 with Int407 cells. For all experiments, cells were centrifuged at 1500 rpm for 2 min. immediately after infection to allow close contact of the bacteria with the cells. Each bacterial strain was assayed in triplicate and experiments were repeated once.

#### Cytotoxicity

Cytotoxicity to macrophages was determined by release of lactate dehydrogenase (LDH) by the monolayers into supernatants using the CytoTox 96<sup>®</sup> Non-Radioactive Cytotoxicity Assay (Promega G1780). Results were expressed as the percentage of LDH released by infected monolayers compared to LDH release by lysis buffer treated (lysed) monolayers at 24 hours [(A<sub>495</sub> test sample - A<sub>495</sub> medium control) / (A<sub>495</sub> macrophage+lysis buffer - A<sub>495</sub> medium+lysis buffer)] × 100.

#### Induction of oxidative radicals (chemiluminescence)

The method described by Chadfield and Olsen [47] was used. Opsonized zymosan (Sigma) and phorbol myristate acetate (PMA)(Sigma) was used as positive control stimuli. A Lucigenin probe (Sigma) dissolved in DMSO (Sigma) and diluted in Hanks balanced salt solution (HBBS) (Gibco Life Technologies) to final assay concentrations of 150 µg/ml was used. Cells used in the assays were J774A.1. The luminometer (AUTOLUMAT LB 953, Berthold) was set at 37°C. The reading intervals were minutes and the duration of the assays were 300 minutes. The response was expressed as the area under the response curve (AUC) and the time where the response peaked.

#### Induction of IL-6 production

A macrophage invasion assay was conducted with J774A.1. After 1 hour and 4 hours of incubation, the last 3 hours with gentamicin present in the medium, supernatants were removed and assayed for the presence of cytokine IL-6 using a commercially available kit (Promokine, mouse IL-6 ELISA kit). Positive controls consisted of purified IL-6 supplied with the kit, and negative controls consisted of wells not infected with bacteria.

#### Animal challenge experiments

Per oral and intraperitoneal virulence were assessed using competitive challenge assays with five C57BL/6 female mice (Taconic Black6 mice) of 6–8 weeks of age per group. The protocol followed the instructions of Jelsbak *et al.* [48] for intra peritoneal challenge, while a challenge dose of 8 × 10<sup>6</sup> CFU was used for per oral challenges. In all experiments, *S. Dublin* was given a 10

times reduced dose compared to *S. Typhimurium*. The ratio between the wild type and the mutant strain in the broth used for challenge as well as the ratio in the spleen 4–5 days post challenge was determined by patching of 100 colonies from the broth and from the spleen of each mice onto LB agar without antibiotic and 100 colonies onto LB agar with the relevant antibiotic. For statistical analysis of the difference between input and output ratios, an estimate of the variation on the input ratio was needed. This was obtained by combining the results from the patching of all input pools into one distribution and using this as an average input ratio. The animal experimentation was conducted with permission from the Animal Experiments Inspectorate (<http://www.foedevarestyrelsen.dk/Dyr/Dyrevelfaerd/Dyreforsogstilsynet/Sider/forside.aspx>) in accordance with Danish law (license number: 2009/561–1675).

#### Statistical analysis

Statistical analyses were made using the statistical software package GraphPath Prism 5. Mean CFU of bacterial strains in cell assays and cytotoxicity levels were compared using Bonferroni's multiple comparison test. Comparison of mean competitive index between wild type and mutant strains and oxidative responses were done using unpaired T-test. P<0.05 was considered significant.

#### Abbreviations

CI: Competitive index; AUC: Area under curve; CFU: Colony forming units.

#### Competing interests

The authors declare that they have no competing interests.

#### Authors' contributions

KH-H-A and JC constructed the strains, KH-HA, MSC and JEO conducted cell culture adhesion and invasion experiments, MSC measured the oxidative response in macrophages, JEO measured cytokine responses, KH-HA, JEO and JR conducted mice challenge experiments, JEO drafted the manuscript and all authors read and commented on this. All authors approved the final manuscript.

#### Acknowledgments

Tony Bønnelycke and Gitte Pedersen are thanked for skillful technical assistance. Kelly T. Hughes, Washington University, Seattle, WA is thanked for providing the plasmid pPR2 with *S. Typhimurium fliC*. José Breschiani is thanked for help with the electron-microscopy pictures.

#### Author details

<sup>1</sup>Department of Veterinary Disease Biology, Faculty of Health and Medical Sciences, University of Copenhagen, Stigbøjlen 4, 1870 Frederiksberg C, Denmark. <sup>2</sup>Department of Genetics, Faculty of Biology, University of Seville, Apartado 1095, 41080 Sevilla, Spain. <sup>3</sup>Novo Nordic, Krogshøjvej 51, 2880 Bagsværd, Denmark.

Received: 4 July 2012 Accepted: 19 March 2013

Published: 25 March 2013

#### References

1. Joys TM: The covalent structure of the phase-1 filament protein of *Salmonella Typhimurium* and its comparison with other flagellins. *J Biol Chem* 1985, **260**:15758–15761.
2. Popoff MY: *LL: Antigenic formulas of the Salmonella serovars*. Paris: WHO collaboration Centre for reference and research on Salmonella; 2007.

3. McQuiston JR, Fields PI, Tauxe RV, Logsdon JM: Do *Salmonella* carry spare tyres. *Trends Microbiol* 2008, **16**:142–148.
4. Kojima S, Sblair DF: The bacterial flagellar motor: structure and function of a complex molecular machine. *Int Rev Cyt* 2004, **233**:93–134.
5. Kawai T, Akira S: Toll-like receptors and their crosstalk with other innate receptors in infection and immunity. *Immune Int Rev Cytol* 2011, **34**:637–650.
6. Miao EA, Rajan JV, Aderem A: Caspase-1-induced pyroptotic cell death. *Immunol Rev* 2011, **243**:206–214.
7. Miao EA, Leaf IA, Treuting PM, Moad DP, Dors M, Sarkar A, Warren SE, Wewers MD, Aderem A: Caspase-1-induced pyroptosis is an innate immune effector mechanism against intracellular bacteria. *Nat Immunol* 2010, **11**:1136–1143.
8. Schmidt CK, Ikeda JS, Darnell SC, Watson PR, Bispham J, Wallis TS, Weinstein DL, Metcalf ES, O'Brien AD: Absence of all components of the flagellar export and synthesis machinery differentially alters virulence of *Salmonella enterica* serovar Typhimurium in models of typhoid fever, survival in macrophages, tissue culture invasiveness, and calf enterocolitis. *Infect Immune* 2001, **69**:5619–5625.
9. Van Asten FJ, Hendriks HG, Koninkx JF, Van der Zeijst BA, Gastra W: Inactivation of the flagellin gene of *Salmonella enterica* serovar Enteritidis strongly reduces invasion into differentiated Caco-2 cells. *FEMS Microbiol Lett* 2000, **185**:175–179.
10. La Ragione RM, Cooley WA, Velge P, Jepson MA, Woodward MJ: Membrane ruffling and invasion of human and avian cell lines is reduced for aflagellate mutants of *Salmonella enterica* serovar Enteritidis. *Int J Med Microbiol* 2003, **293**:261–272.
11. Carsiotis M, Stocker BAD, Weinstein DL, O'Brien AD: Flagella of *Salmonella typhimurium* are a virulence factor in infected C57BL/6J mice. *Infect Immun* 1984, **46**:814–818.
12. Lockman HA, Curtiss R 3rd: Virulence of non-type 1-fimbriated and nonfimbriated nonflagellated *Salmonella typhimurium* mutants in murine typhoid fever. *Infect Immun* 1988, **60**:491–496.
13. Allen-Vercoe E, Sayers AR, Woodward MJ: Virulence of *Salmonella enterica* serovar Enteritidis aflagellate and afimbriated mutants in a day-old chick model. *Epidemiol Infect* 1999, **122**:395–402.
14. Robertson JM, Grant G, Allen-Vercoe E, Woodward MJ, Pusztai A, Flint HJ: Adhesion of *Salmonella enterica* serovar Enteritidis strains lacking fimbriae and flagella to rat ileal explants cultured at the air interface or submerged in tissue culture medium. *J Med Microbiol* 2000, **49**:691–696.
15. Robertson JM, McKenzie NM, Duncan M, Allen-Vercoe E, Woodward MJ, Flint HJ, Grant G: Lack of flagella disadvantages *Salmonella enterica* serovar Enteritidis during the early stages of infection in the rat. *J Med Microbiol* 2003, **52**:91–99.
16. Uzzau S, Brown DJ, Wallis T, Rubino S, Leori G, Bernard S, Casadesús J, Platt DJ, Olsen JE: Host adapted serovars of *Salmonella enterica*. *Epidemiol Infect* 2000, **125**:229–255.
17. Khoramian-Falsafi T, Harayama S, Kursukake K, Pechère JC: Effect of motility and chemotaxis on the invasion of *Salmonella typhimurium* into HeLa cells. *Microbial Pathog* 1990, **9**:47–53.
18. Fields PI, Swanson RV, Hardaris CG, Heffron F: Mutants of *Salmonella typhimurium* that cannot survive within the macrophage are avirulent. *Proc Nat Acad Sci, USA* 1986, **83**:5189–5193.
19. Fink SL, Cookson BT: Pyroptosis and host cell death responses during *Salmonella* infection. *Cell Microbiol* 2007, **9**:2562–2570.
20. Jones BD, Lee CA, Falkow S: Invasion by *Salmonella typhimurium* is affected by the direction of flagellar rotation. *Infect Immun* 1992, **60**:2475–2480.
21. Hautefort I, Thompson A, Eriksson-Ygberg S, Parker ML, Lucchini S, Danino V, Bongaerts RJ, Ahmad N, Rhen M, Hinton JC: During infection of epithelial cells *Salmonella enterica* serovar Typhimurium undergoes a time-dependent transcriptional adaptation that results in simultaneous expression of three type 3 secretion systems. *Cell Microbiol* 2008, **10**:958–984.
22. Knodler LA, Vallance BA, Celli J, Winfree S, Hansen B, Montero M, Steele-Mortimer O: Dissemination of invasive *Salmonella* via bacterial-induced extrusion of mucosal epithelia. *Proc Nat Acad Sci, USA* 2010, **107**:17733–17738.
23. Kim M, Lim S, Kim D, Choy HE, Ryu S: A *tdcA* mutation reduces the invasive ability of *Salmonella enterica* serovar Typhimurium. *Mol Cells* 2009, **28**:89–395.
24. Mangan MW, Lucchini S, Croinin TO, Fitzgerald S, Hinton JCD, Dorman CJ: The nucleoid-associated protein HU controls three regulons that coordinate virulence, response to stress and general physiology in *Salmonella enterica* serovar Typhimurium. *Microbiol* 2011, **175**:1075–1087.
25. Webber MA, Bailey AM, Blair JMA, Morgan E, Stevens MP, Hinton J, Ivens A, Wain J, Piddock LJV: The global consequence of disruption of the AcrAB-TolC efflux pump in *Salmonella enterica* includes reduced expression of SPI-1 and other attributes required to infect the host. *J Bac* 2009, **191**:4276–4285.
26. Liu SL, Ezaki T, Miura H, Matsui K, Yabuuchi X: Intact motility as a *Salmonella typhi* invasion-related factor. *Infect Immun* 1988, **56**:1967–1973.
27. Eriksson S, Lucchini S, Thompson A, Rhen M, Hinton JC: Unraveling the biology of macrophage infection by gene expression profiling of intracellular *Salmonella enterica*. *Mol Microbiol* 2003, **47**:103–118.
28. Stewart MK, Cummings LA, Johnson ML, Berezow AB, Cookson BT: Regulation of phenotypic heterogeneity permits *Salmonella* evasion of the host caspase-1 inflammatory response. *PNAS* 2011, **108**:20742–20747.
29. Wyant TL, Tanner MK, Szein MB: *Salmonella typhi* flagella are potent inducers of proinflammatory cytokine secretion by human monocytes. *Infect Immun* 1999, **67**:3619–3624.
30. Metcalfe HJ, Best A, Kanellos T, La Ragione RM, Werling D: Flagellin expression enhances *Salmonella* accumulation in TLR5-positive macrophages. *Develop Compar Immunol* 2010, **34**:797–804.
31. Eaves-Pyles T, Murthy K, Liaudet L, Virag L, Ross G, Soriano FG, Szal C, Salzman AL: Flagellin, a novel mediator of *Salmonella*-induced epithelial activation and systemic inflammation: I kappa B alpha degradation, induction of nitric oxide synthase, induction of proinflammatory mediators, and cardiovascular dysfunction. *J Immunol* 2001, **166**:1248–1260.
32. Gewirtz AT, Navas TA, Lyons S, Godowski PJ, Madara JL: Cutting edge: Bacterial flagellin activates basolaterally expressed *tlr5* to induce epithelial proinflammatory gene expression. *J Immunol* 2001, **167**:1882–1885.
33. Hayashi F, Smith KD, Ozinsky A, Hawn TR, Yi EC, Goodlett DR, Eng JK, Akira S, Underhill DM, Aderem A: The innate immune response to bacterial flagellin is mediated by Toll-like receptor 5. *Nat* 2001, **410**:1099–1103.
34. Jones BD, Falkow S: Identification and characterization of a *Salmonella typhimurium* oxygen-regulated gene required for bacterial internalization. *Infect Immune* 1994, **62**:37–45.
35. Yrild U, Svensson M, Johansson C, Wick MJ: *Salmonella* infection of bone marrow-derived macrophages and dendritic cells: influence on antigen presentation and initiation of immune response. *FEMS Immun Med Microbiol* 2000, **27**:313–320.
36. Winter SE, Thiennimitr P, Nuccio S-P, Haneda T, Winter MG, Wilson RP, Russel JM, Henry T, Tran QT, Lawhon SD, Adams LG, Bäumlér AJ: Contribution of flagellin pattern recognition to intestinal inflammation during *Salmonella enterica* infection. *Infect Immun* 2009, **77**:1904–1916.
37. Yim L, Betancor L, Martinez A, Bryant C, Maskell D, Chabalgoity JA: Naturally occurring motility-defective mutants of *Salmonella enterica* serovar Enteritidis isolated preferentially from nonhuman rather than human sources. *Appl Environment Microbiol* 2011, **77**:7740–7748.
38. Kaiser P, Rothwell L, Galyov EE, Barrow PA, Burnside J, Wigley P: Differential cytokine expression in avian cells in response to invasion by *Salmonella typhimurium*, *Salmonella enteritidis* and *Salmonella gallinarum*. *Microbiol* 2000, **146**:3217–3226.
39. Tsois RM, Young GM, Solnick JV, Bäumlér AJ: From bench to bedside: stealth of enteroinvasive pathogens. *Nat Rev Microbiol* 2008, **6**:883–892.
40. Beuzón CR, Holden DW: Use of mixed infections with *Salmonella* strains to study virulence genes and their interactions *in vivo*. *Microb Infect* 2001, **3**:1345–1352.
41. Stecher B, Hapfelmeier S, Müller C, Kremer M, Stallmach T, Hardt W-D: Flagella and chemotaxis are required for efficient induction of *Salmonella enterica* serovar Typhimurium colitis in the streptomycin-treated mice. *Infect Immun* 2004, **72**:4138–4150.
42. Pullinger GD, Dziva F, Charleston B, Wallis TS, Stevens MP: Identification of *Salmonella enterica* serovar Dublin specific sequences by subtractive hybridization and analysis of their role in intestinal colonization and systemic translocation in cattle. *Infect Immun* 2008, **76**:5310–5321.
43. Olsen JE, Hoegh-Andersen KH, Casadesús J, Thomsen LE: The importance of motility and chemotaxis for extra animal survival of *Salmonella*

- enterica* serovar Typhimurium and Dublin. *J Appl Microbiol* 2012, **113**:560–568.
44. Maloy SR, Stewart VJ, Tayler RK: *Genetic analysis of pathogenic bacteria*. New York: Cold Spring Harbor Press; 1996.
45. Watson PR, Paulin SM, Bland AP, Jones PW, Wallis TS: Characterization of intestinal invasion by *Salmonella* Typhimurium and *Salmonella* Dublin and the effect of a mutation in the *invH* gene. *Infect Immun* 1995, **63**:2743–2754.
46. Chadfield MS, Brown DJ, Aabo S, Christensen JP, Olsen JE: Comparison of intestinal invasion and macrophage response of *Salmonella* Gallinarum and other host adapted *Salmonella enterica* serovars in the avian host. *Vet Microbiol* 2003, **92**:49–64.
47. Chadfield MS, Olsen JE: Determination of the oxidative burst chemiluminescent response of avian and murine-derived macrophages versus corresponding cell-lines in relation to stimulation with *Salmonella* serovars. *Vet Immunol Immunopathol* 2001, **80**:289–308.
48. Jelsbak L, Thomsen LE, Wallrodt I, Jensen PR, Olsen JE: Polyamines are required for virulence in *Salmonella enterica* serovar Typhimurium. *PLoS One* 2012, **7**:e36149.

doi:10.1186/1471-2180-13-67

**Cite this article as:** Olsen *et al.*: The role of flagella and chemotaxis genes in host pathogen interaction of the host adapted *Salmonella enterica* serovar Dublin compared to the broad host range serovar *S. Typhimurium*. *BMC Microbiology* 2013 **13**:67.

Submit your next manuscript to BioMed Central  
and take full advantage of:

- Convenient online submission
- Thorough peer review
- No space constraints or color figure charges
- Immediate publication on acceptance
- Inclusion in PubMed, CAS, Scopus and Google Scholar
- Research which is freely available for redistribution

Submit your manuscript at  
[www.biomedcentral.com/submit](http://www.biomedcentral.com/submit)

