

CASE REPORT

Acute respiratory distress syndrome in one patient with gout complicated by severe pulmonary tuberculosis: report of one case and literature review

Wei Wang, Yu Zhou, Zhenjiao Su, Li Luo, Ling Zhao

Department of Intensive Care Unit, Zhuhai Hospital of Jinan University, Zhuhai People's Hospital, Zhuhai 519000, China

J Thorac Dis 2013;5(2):E50-E52. doi: 10.3978/j.issn.2072-1439.2012.07.14

Introduction

The prevalence of tuberculosis (TB) infection has increased in recent years. Meanwhile, due to reasons including the presence of concomitant chronic diseases and immune dysfunction and the irregular application of anti-TB therapies, an increasing number of atypical and severe TB infection cases have been reported. Recently, a patient who had received long-term analgesic and hormone-based therapies for his gout was admitted in our hospital due to dyspnea. His condition was initially diagnosed as bacterial or viral infection because of the short duration and rapid progression, but ultimately proved to be tubercle bacillus infection. The patient died 63 hrs after emergency treatment.

Case report

A 38-year-old male admitted to our hospital due to "fever, cough, expectoration, chest distress, and shortness of breath". He had a history of gout and long-term irregular use of analgesic and hormonal drugs. The patient denied of any history of allergy to food or drugs. Seven days ago, the patient developed fever, cough, expectoration, chest distress and shortness of breath of no apparent cause. Four days prior to admission, the patient had a fever up to 39.5 °C at night, with thick sticky phlegm that was difficult to expectorate; meanwhile, the shortness of breath also made the patient unable to be kept in a supine position. Physical examination on admission showed body temperature 37.3 °C, heart rate 121 times/min, respiration 28 times/min, blood pressure 94/60 mmHg and blood oxygen 60%. He also

had apparent orthopnea and cyanosis of the lips, symmetrical bilateral lung breath sounds, moist rales, and phlegm rales. Chest X-ray showed "diffuse bilateral lung disease, pulmonary edema?" (Figure 1). Routine blood test showed white blood cell count (WBC) $4.11 \times 10^9/L$, neutrophils (GRAN) 90.3%, lymphocytes (LYM) 7.33%, mono-cytes (MONO) 1.78%, Hb 127 g/L, PLT $94.6 \times 10^9/L$. Blood gas tests showed pH 7.27, PaO₂ 43 mmHg, PaCO₂ 42 mmHg, SO₂ 72.1%, oxygenation index PaO₂/FIO₂ 86. Other findings included AST 343 U/L, CREA 91 μmol/L, CRP 201 mg/L, PCT 34.5 ng/mL, and CTNI 0.09 μg/L. After having been transferred to the intensive care unit (ICU), the patient received tracheal intubation and mechanical ventilation. Fiberoptic bronchoscopy showed a large quantity of sputum in the airway. Then the patient's sputum specimen was sent for laboratory tests and the patient received empiric antibiotic therapy (initially piperacillin-tazobactam and then changed to imipenem-cilastatin, teicoplanin and ribavirin therapy). Twenty-four hours after admission, the disease was not improved and the transcutaneous blood oxygen was maintained at 75-80%; other measurements included CVP 20 cm H₂O, CI 4.0 L/min/m², CO 7 L/min, and SVR 747 dynes-sec-cm⁻⁵ under ventilator support (A/C, VT 350 mL, FIO₂ 65%, and PEEP 15 cm H₂O). The patient was given pressor agents to maintain blood pressure, with a urine output <0.5 mL/kg/hr. The bedside CRRT was applied. Then, the test results were WBC $1.88 \times 10^9/L$, Hb 118 g/L, PLT $66 \times 10^9/L$, AST 1,224 U/L, TBIL 65.5 mmol/L, hepatitis B surface antigen negative, HIV antigen negative, influenza A negative. Chest radiography was re-performed (Figure 2). Cardiac ultrasound showed AO 27 mm, PA 21mm, PAV 90 cm/S, LVPWD 9 mm, and EF 80%. Forty-eight hours after admission, the patient was in a coma, with body temperature of 36.5 °C, heart rate 140 beats/min, blood pressure 78/54 mmHg, blood oxygen undetectable. CVP 23 cm H₂O, CI 2.1 L/min/m², CO 3.4 L/min, SVR 1,809 dynes-sec-cm⁻⁵. Blood gas pH 7.26, PaO₂ 60 mmHg, PaCO₂ 51 mmHg, SO₂ 86%, oxygenation index 60. WBC $2.61 \times 10^9/L$, Hb 115 g/L, PLT $39.5 \times 10^9/L$. AST 1,800 U/L, CK 1044 U/L, CTNI 0.44 μg/L. Widal test and Weil-Felix Test (-),

Corresponding to: Ling Zhao. Department of Intensive care unit, Zhuhai Hospital of Jinan University, Zhuhai People's Hospital, Zhuhai 519000, China. Email: dr.zhaoling@126.com.

Submitted May 13, 2012. Accepted for publication Jun 21, 2012.
Available at www.jthoracdis.com

ISSN: 2072-1439

© Pioneer Bioscience Publishing Company. All rights reserved

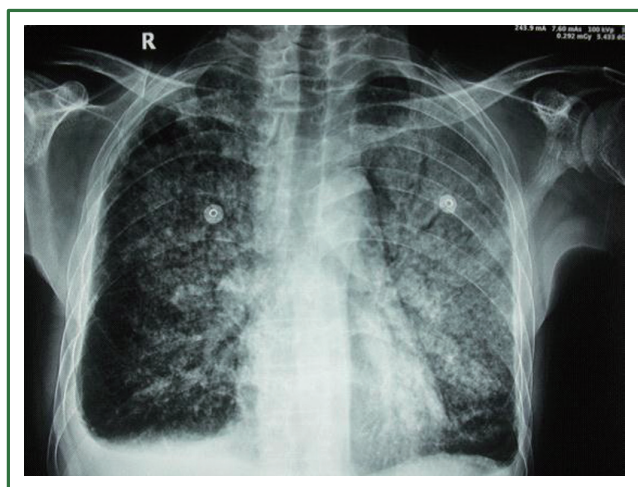


Figure 1. Diffuse and patchy intensity in the middle and lower lungs, with ill-defined border and blunting of bilateral costophrenic angles.

(1-3)- β -D-glucan <10 pg/mL (normal range, 0-10 pg/mL). Anti-“O” and rheumatoid factors were normal. Three consecutive sputum samples showed acid-fast bacilli. The patient was also given isoniazid, rifampicin, streptomycin and pyrazinamide as anti-TB treatment. Sadly, the patient died 63 hrs after transfer to the ICU. Sputum culture and blood culture showed no bacterial growth. The final diagnosis is severe pulmonary TB, acute respiratory distress syndrome (ARDS), and multiple organ dysfunction syndrome.

Discussion

Today, the world still faces an annual toll of 9 million new TB cases and 2 million TB deaths. According to the World Health Organization (WHO), 9.27 million new TB cases were identified in 2007, including about 1.3 million in China, secondary only to India (1). Results of the 4th National TB Epidemiological Survey in China suggested that the number of patients infected by tubercle bacillus was larger than 7.9 million (2). According to current diagnostic criteria of ARDS (3) (pulmonary exudative lesions; non-cardiogenic pulmonary edema; oxygenation index $\text{PaO}_2/\text{FIO}_2 < 200$), Sharma *et al.* (4) reported that among the 2,733 cases of TB, only 29 cases (1%) developed ARDS; in China, however, the percentage was reported to be 5% (5), indicating that cases with TB-induced ARDS infection is uncommon. It has been suggested that a history of chronic diseases, miliary TB, low lymphocyte count and liver dysfunction are high risk factors of ARDS (4). When the disease condition becomes worse and the nutritional status such as albumin and hemoglobin levels can not be well maintained, the prognosis can be poor (6). According to Sun *et al.* (7) the prognostic factors of death in critically ill TB patients included fungal infection

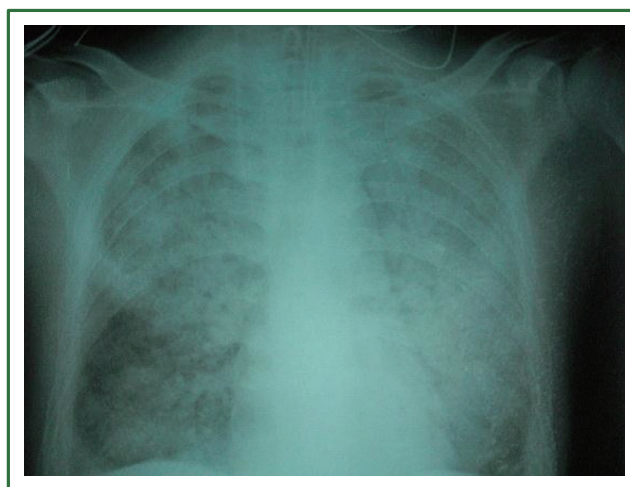


Figure 2. Diffuse and patchy intensity throughout both lungs, with ill-defined border and blunting of bilateral costophrenic angles.

(HR=3.44, 95% CI: 1.23-9.62), type II respiratory failure (HR=4.03, 95% CI: 1.56-10.38), liver damage (HR=3.96, 95% CI: 1.30-12.10), and high APACHEII score (>25) (HR=4.91, 95% CI: 1.99-12.11). In patients with delayed diagnosis and significantly deteriorating treatment, Greenaway *et al.* (8) found that the overall mortality rate was 12%, but reached 40-50% among those who were transferred to ICU, which was considered to be due to delayed diagnosis and treatment. A recent study has concluded that the condition of systemic organ function in ARDS (SOFA score) is correlated with a patient's prognosis (OR 0.809, 95% CI: 0.691-0.946, P=0.008) (9). The prognosis of patients with ARDS is not only affected by high risk factors, but also related to treatment time and treatment conditions, resulting in significant discrepancies in the mortality rate of patients in corresponding studies. For instance, Agarwal *et al.* (10) found that among 187 ARDS patients, 9 had TB infection including 8 miliary TB; after treatment, 7 patients (78%) were cured and only 2 (22%) died. However, some other studies showed higher mortality rates. According to Erbes *et al.* (11), 50% of patients died in 32 days. In another case-series study, the ICU and hospital mortality rates of critically ill patients were 58% and 63%, respectively (9). In our current case, the patient had a history of gout and long-term use of analgesics and hormone-based drugs. Many studies have confirmed that the long-term use of hormones can impair the immune defense (such as T lymphocytes and macrophage function suppression) and are likely to lead to tubercle bacillus infection and spread in human tissue (12,13). It can be speculated that the patient's disease was overlooked by himself and his family members due to the atypical infection symptoms. The patient was sent to our hospital until his condition became worse. Soon after admission, the patient developed acute respiratory distress symptoms and

multiple organ dysfunction, which were not improved after potent anti-infection or TB treatment. Ultimately, all efforts to revive him were futile. The patient did not receive CT examination and his family members refused an autopsy after his death, so we are unable to further clarify whether there was an infection of extrapulmonary TB. As for critically ill patients, in addition to complex treatment combining anti-TB medication and ventilatory support, hormone treatment might be feasible for patients with severe TB (14). It has recently been reported that patients with severe TB complicated by ARDS can be rescued by extracorporeal membrane oxygenation (ECMO), but its indications and risks need further clarification (15).

Conclusions

The mortality rate of severe TB with ARDS remains high, although this condition is often neglected. Early diagnosis and treatment can help improve the prognosis. In clinical practice, infection with tubercle bacillus should be carefully excluded in pulmonary infection patients accompanied with immune dysfunction or chronic diseases. Severe patients should be consolidated with anti-TB therapy and supportive therapy and the effectiveness of hormone and ECMO treatment should be further investigated.

Acknowledgements

Disclosure: The authors declare no conflict of interest.

References

1. Global tuberculosis control: epidemiology, strategy, financing: WHO report 2009 (Publication no. WHO/HTM/TB/2009.411.). Geneva: World Health Organization, 2009.
2. National Technic Steering Group Of The Epidemiological Sampling Survey For Tuberculosis, Duanmu H. Report on fourth national epidemiological sampling survey of tuberculosis. *Zhonghua Jie He He Hu Xi Za Zhi* 2002;25:3-7.
3. Bernard GR, Artigas A, Brigham KL, et al. The American-European Consensus Conference on ARDS. Definitions, mechanisms, relevant outcomes, and clinical trial coordination. *Am J Respir Crit Care Med* 1994;149:818-24.
4. Sharma SK, Mohan A, Banga A, et al. Predictors of development and outcome in patients with acute respiratory distress syndrome due to tuberculosis. *Int J Tuberc Lung Dis* 2006;10:429-35.
5. Zhang J, Xi X, Han F, et al. Multivariate analysis of acute respiratory distress syndrome in patients with pulmonary tuberculosis. *The journal of the Chinese antituberculosis association* 2008;30:48-52.
6. Mehta JB, Fields CL, Byrd RP Jr, et al. Nutritional status and mortality in respiratory failure caused by tuberculosis. *Tenn Med* 1996;89:369-71.
7. Sun J, Fang K, Ren DH, et al. A study of the prognostic factors associated with mortality in critically ill patients with tuberculous. *Zhonghua Jie He He Hu Xi Za Zhi* 2011;34:39-42.
8. Greenaway C, Menzies D, Fanning A, et al. Delay in diagnosis among hospitalized patients with active tuberculosis--predictors and outcomes. *Am J Respir Crit Care Med* 2002;165:927-33.
9. Lee K, Kim JH, Lee JH, et al. Acute respiratory distress syndrome caused by military tuberculosis: a multicentre survey in South Korea. *Int J Tuberc Lung Dis* 2011;15:1099-103.
10. Agarwal R, Gupta D, Aggarwal AN, et al. Experience with ARDS caused by tuberculosis in a respiratory intensive care unit. *Intensive Care Med* 2005;31:1284-7.
11. Erbes R, Oettel K, Raffenberg M, et al. Characteristics and outcome of patients with active pulmonary tuberculosis requiring intensive care. *Eur Respir J* 2006;27:1223-8.
12. Targeted tuberculin testing and treatment of latent tuberculosis infection. This official statement of the American Thoracic Society was adopted by the ATS Board of Directors, July 1999. This is a Joint Statement of the American Thoracic Society (ATS) and the Centers for Disease Control and Prevention (CDC). This statement was endorsed by the Council of the Infectious Diseases Society of America. (IDSA), September 1999, and the sections of this statement. *Am J Respir Crit Care Med* 2000;161:S221-47.
13. Jick SS, Lieberman ES, Rahman MU, et al. Glucocorticoid use, other associated factors, and the risk of tuberculosis. *Arthritis Rheum* 2006;55:19-26.
14. Kim YJ, Pack KM, Jeong E, et al. Pulmonary tuberculosis with acute respiratory failure. *Eur Respir J* 2008;32:1625-30.
15. Mauri T, Foti G, Zanella A, et al. Long-term extracorporeal membrane oxygenation with minimal ventilator support: a new paradigm for severe ARDS? *Minerva Anestesiol* 2012;78:385-9.



Cite this article as: Wang W, Zhou Y, Su ZJ, Luo L, Zhao L. Acute respiratory distress syndrome in one patient with gout complicated by severe pulmonary tuberculosis: report of one case and literature review. *J Thorac Dis* 2013;5(2):E50-E52. doi: 10.3978/j.issn.2072-1439.2012.07.14