

Geometric control of vascular networks to enhance engineered tissue integration and function

Jan D. Baranski^{a,1}, Ritika R. Chaturvedi^{a,1}, Kelly R. Stevens^{b,1}, Jeroen Eyckmans^a, Brian Carvalho^b, Ricardo D. Solorzano^a, Michael T. Yang^a, Jordan S. Miller^a, Sangeeta N. Bhatia^{b,c,d,e,f}, and Christopher S. Chen^{a,2}

^aDepartment of Bioengineering, School of Engineering and Applied Science, University of Pennsylvania, Philadelphia, PA 19104; ^bHarvard-MIT Health Sciences and Technology, Institute for Medical Engineering and Science, Massachusetts Institute of Technology, Cambridge, MA 02139 ^cHoward Hughes Medical Institute, Cambridge, MA 02139; ^dDepartment of Electrical Engineering and Computer Science, Massachusetts Institute of Technology, Cambridge, MA 02139; ^eDavid H. Koch Institute for Integrative Cancer Research, Massachusetts Institute of Technology, Cambridge, MA 02139; and ^fDepartment of Medicine, Brigham and Women's Hospital, Harvard Medical School, Boston, MA 02115

Edited by Michael A. Gimbrone, Brigham and Women's Hospital, Harvard Medical School, Boston, MA, and approved March 27, 2013 (received for review October 16, 2012)

Tissue vascularization and integration with host circulation remains a key barrier to the translation of engineered tissues into clinically relevant therapies. Here, we used a microtissue molding approach to demonstrate that constructs containing highly aligned "cords" of endothelial cells triggered the formation of new capillaries along the length of the patterned cords. These vessels became perfused with host blood as early as 3 d post implantation and became progressively more mature through 28 d. Immunohistochemical analysis showed that the neovessels were composed of human and mouse endothelial cells and exhibited a mature phenotype, as indicated by the presence of alpha-smooth muscle actin-positive pericytes. Implantation of cords with a prescribed geometry demonstrated that they provided a template that defined the neovascular architecture in vivo. To explore the utility of this geometric control, we implanted primary rat and human hepatocyte constructs containing randomly organized endothelial networks vs. ordered cords. We found substantially enhanced hepatic survival and function in the constructs containing ordered cords following transplantation in mice. These findings demonstrate the importance of multicellular architecture in tissue integration and function, and our approach provides a unique strategy to engineer vascular architecture.

tissue engineering | regenerative medicine | angiogenesis | vascular biology | liver

Engineered tissues are emerging as a viable approach to address the scarce supply of heterologous donor organs available for transplantation (1). However, the field has not yet identified an effective strategy to vascularize such tissue constructs, thus limiting current successes primarily to thin, avascular tissues (2). In vascularized tissues, it is estimated that cells must be located within 150–200 μm of the nearest capillary to survive and function optimally (3), although this distance may vary depending on the metabolic demands of different cell types. Although some tissues can function with lower capillary densities, adequate perfusion of metabolically active tissue requires intimate localization of parenchymal cells to a dense vasculature in a highly organized manner (1, 4, 5). For example, the liver has a precisely defined organization in which hepatocytes and microvessels are interdigitated in a highly aligned microarchitecture (2, 6). In addition, the architecture of the vasculature itself—the branching frequency and angles, alignment of vessels, and tortuosity—constrains gradients of metabolite exchange and the overall flow fields through the tissue. Engineering such tissues therefore will require approaches to define the geometric architecture of vascular networks for tissue-specific applications.

Although several strategies have been explored to enhance tissue vascularization, including immobilization or controlled release of proangiogenic factors (3, 7, 8), studies in which the tissue is seeded with exogenous endothelial and mural cells before implantation have been particularly promising (9–12). Recent

progress suggests that allowing vascular cells to form rudimentary vascular networks either in vitro ("prevascularization"), or in vivo, results in enhanced integration of grafted endothelial cells (ECs) with host vasculature and parenchymal cell survival following implantation (12–16). Although these strategies demonstrate potential, they rely on the spontaneous self-organization of randomly seeded cells and leave open the question as to whether more directed control over network formation might allow further improvement to their function.

Here, we report the development of a unique approach for rapidly creating spatially organized vascular architectures within engineered tissues in vivo. Our approach uses micropatterning techniques to organize ECs into geometrically defined "cords," which in turn act as a template after implantation for the guided formation of patterned capillaries integrated with host tissue. We demonstrate that spatial patterning of vascular architecture within engineered hepatic tissues leads to significantly increased levels of albumin activity, a marker of differentiated hepatocyte function, for at least 3 wk in vivo compared with nonpatterned controls. These findings demonstrate that geometric control of vascular architecture modulates the function of engineered tissues and therefore has broad application in the translation of cell-based regenerative therapies.

Results

Patterned Assemblies of EC Cords Induces a Vascular Response. Adapting a previously developed approach (1, 17), geometrically defined cords of ECs that encase a collagen core were generated by seeding a suspension of human umbilical vein ECs (HUVECs) and mouse mesenchymal cells (C3H10T1/2) in liquid type I collagen into 150- μm -wide microchannels by centrifugation (Fig. 1A). After the collagen was polymerized and upon culture, the cells rapidly self-assembled into cords over approximately 4 h, during which they contracted to roughly 50% of their original diameter (Fig. 1B). This cord contraction was driven by myosin-mediated contractile activity, as cells treated with a nonmuscle myosin inhibitor (blebbistatin) or a Rho-associated protein kinase (ROCK) inhibitor (Y27632) immediately after seeding failed to form cords (Fig. S1). Time-lapse imaging of fluorescently labeled cells showed that the small

Author contributions: J.D.B., R.R.C., K.R.S., S.N.B., and C.S.C. designed research; J.D.B., R.R.C., K.R.S., J.E., B.C., R.D.S., and M.T.Y. performed research; J.D.B., R.R.C., K.R.S., and J.S.M. contributed new reagents/analytic tools; J.D.B., R.R.C., K.R.S., J.E., B.C., and R.D.S. analyzed data; and J.D.B., R.R.C., K.R.S., S.N.B., and C.S.C. wrote the paper.

The authors declare no conflict of interest.

This article is a PNAS Direct Submission.

¹J.D.B., R.R.C., and K.R.S. contributed equally to this work.

²To whom correspondence should be addressed. E-mail: chrischen@seas.upenn.edu.

This article contains supporting information online at www.pnas.org/lookup/suppl/doi:10.1073/pnas.1217796110/-DCSupplemental.

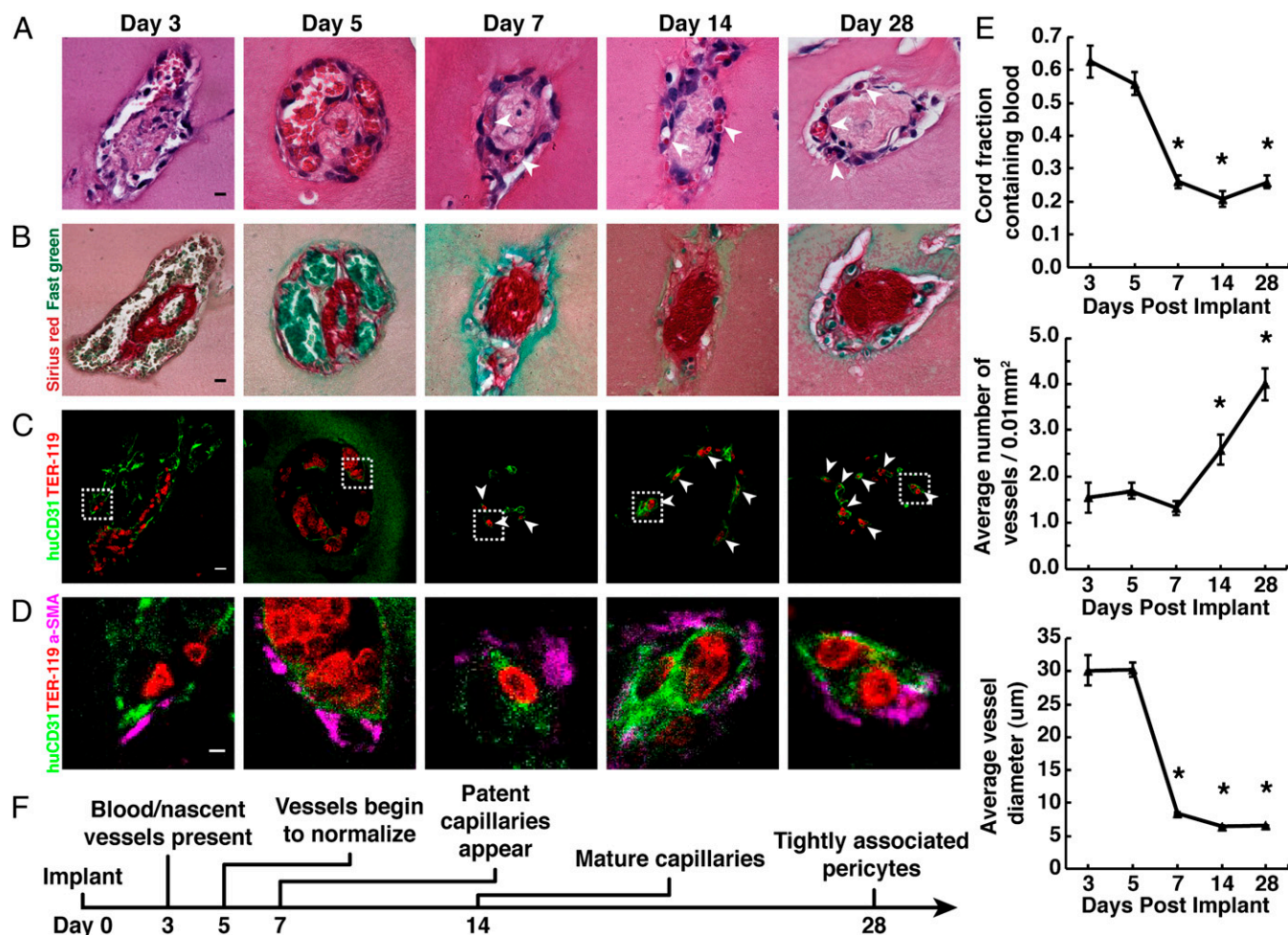


Fig. 2. Implanted EC cords drive formation of stable capillaries. (A) H&E staining of EC cords resected at days 3, 5, 7, 14, and 28 PI suggests the presence of blood within vessels that organize into small capillaries by day 7 (arrowheads) (bar, 10 μ m). (B) Sirius red/fast-green staining of collagen within the cords after harvest (bar, 10 μ m). (C) Ter-119 (red) and human-specific CD31 (green) staining positively identify RBCs and ECs and suggest that vessels were of human origin (bar, 10 μ m). (D) α -SMA-positive (magenta) cells with a perivascular localization are seen at higher magnification (bar, 20 μ m). (E) Quantification of blood area, vessel diameter, and vessel numbers over 28 d. * $P < 0.05$ for comparison of days 7, 14, and 28 vs. 3 and 5 in blood area and vessel diameter measurements, and days 14 and 28 vs. 3, 5, and 7 in vessel number measurements. Error bars: SEM, $n \geq 20$, one-way ANOVA followed by Tukey's post hoc test. (F) Timeline representation of vessel maturation.

as well as geometric definition of cord structure, contribute to the robust vessel formation and graft–host integration.

Geometrically Defined EC Cords in Vitro Yield to Patterned, Perfused Vessels in Vivo After Implantation. To observe more convincingly whether these newly formed capillaries lining the cords had functionally anastomosed with the host vasculature and were perfused, we performed injections of 150 kDa FITC-dextran via the tail vein at day 14 PI and then immediately imaged the implant site. FITC-dextran injections of control mice implanted with fibrin gels containing randomly seeded HUVECs and 10T1/2s resulted in random assembly of vessels exhibiting some degree of perfusion, but such perfusion was observed only near the periphery of implanted constructs (Fig. 3A, *Left*). Conversely, FITC-dextran injection of mice containing tissue constructs with cords demonstrated extensive perfusion of capillaries that spanned the entire length of the constructs. The dextran was contained exclusively within the intraluminal space of the neovessels, demonstrating that blood was not leaking into the interstitium. Importantly, we noted that the original network architecture of the cords visibly templated the new capillary vasculature. Constructs containing parallel arrays of cords resulted in a largely parallel

capillary network, and introducing a single cord with a bifurcation resulted in a perfused branch point (Fig. 3A, *Center and Right*). For parallel cords, the resulting capillary network did not remain exclusively along the cords, as we observed occasional sprouts containing blood extending between adjacent parallel cords at day 14 (Fig. 3A, *Center*) and day 7 (Fig. S3) PI.

To determine the contribution of grafted and host ECs to the vascular interface of perfused capillaries, we injected mouse- and human-specific lectins [*Helix pomatia* agglutinin (HPA)–Alexa Fluor 488 and *Ulex europaeus* agglutinin I (UEA-I)–TRITC, respectively] via tail vein at day 14 PI and performed fluorescent imaging. Perfused microvascular networks in the graft area were composed of a parallel array of patent capillaries that appeared chimeric in composition (Fig. 3B). Stretches of capillaries that bound solely to UEA-1 or to HPA were visible throughout the constructs, suggesting that regions of perfused vessels were composed primarily of human or mouse ECs and confirmed previously reported species specificity of UEA-1 or HPA in our samples (18, 19). In addition, large stretches of capillaries colabeled with both lectins suggested chimeric composition of host and implanted cells in some vessels. Outside the boundary of the implant and cords, vessels were of mouse origin and individual vessels appeared to

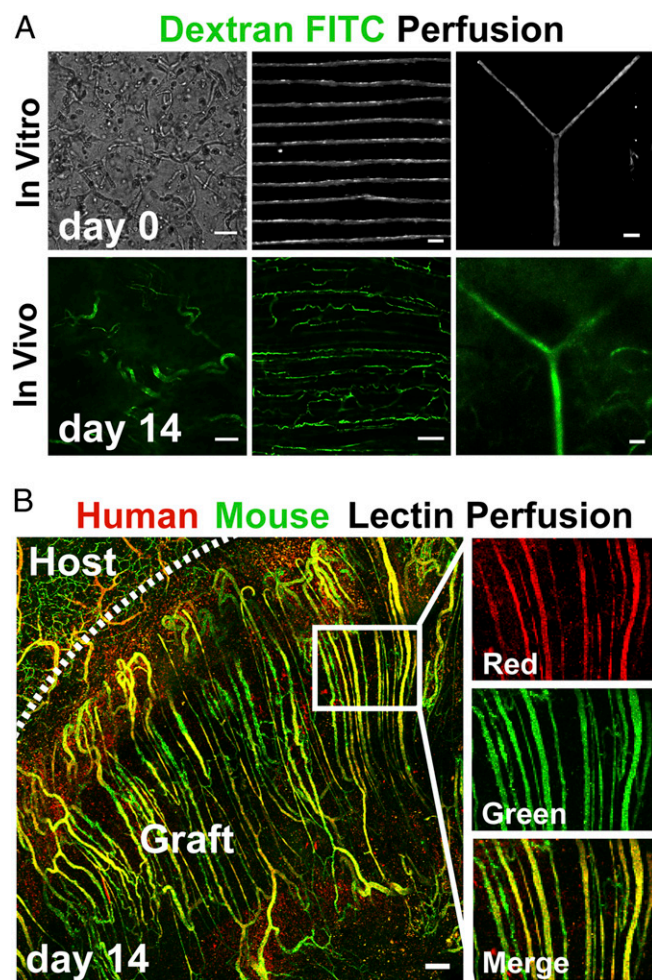


Fig. 3. Patterned EC cords integrate with host vasculature. (A) Bright field images of fibrin gels in vitro before implantation, which contain self-organized networks of HUVECs and 10T1/2s, patterned EC cords, or EC cords patterned into a branched topology (Upper row; bars: 250 μ m, 500 μ m, and 500 μ m, respectively). (Upper row) These samples were implanted in the intraperitoneum of nude mice, and after 14 d FITC-dextran was perfused via tail vein injection. (Lower row) Representative FITC-dextran images (bars, 100 μ m). (B) To further distinguish human from mouse endothelium, gels containing parallel arrays of cords were implanted, and mice were perfused with human-specific lectin (UEA-1-TRITC) and mouse-specific lectin (HPA-Alexa 488) via tail vein injection at 14 d PI. Representative images demonstrate that the resultant perfused microvascular network of the graft is composed of a parallel array of patent capillaries that are chimeric in composition (red, human; green, mouse; bar, 150 μ m).

anastomose with multiple cord-associated capillaries. Imaging of host adipose tissue confirmed the lack of cross-reactivity between UEA-I and mouse vessels (Fig. S4). Further immunostaining using antibodies specific to mouse or human CD31 confirmed that both mouse and human ECs contributed extensively to capillaries in the graft (Fig. S5). Together, these results demonstrate that geometrically controlled engineered vessels are perfused after implantation and that implanted cords anastomose with host tissue via a mechanism that involves, at least in part, ingrowth of host vessels into tissue constructs and connection to regions of vessels lined with a chimeric mixture of both graft- and host-derived endothelium.

Spatially Patterned Endothelial Cords in Engineered Hepatic Tissues Improves Hepatocyte Function. We next sought to test whether geometrically controlled prevascularization of tissue constructs

could affect parenchymal tissue survival and function (Fig. 4). Primary hepatocytes expressing luciferase under the control of a modified albumin promoter were aggregated into spheroids (Fig. 4A) to promote maintenance of their differentiated function (2, 20). To assess whether endothelial cords would support primary hepatocytes after implantation, tissue constructs containing rat hepatocyte aggregates and endothelial cords were sutured to the parametrial fat pad in athymic mice and were compared with control constructs containing rat hepatocyte aggregates only. Histological assessment of tissues explanted at day 20 revealed the presence of patterned collagen structures similar to those found in constructs with cords alone in earlier experiments (Fig. 4B, Left; black arrows). Collagen structures were closely associated with capillaries carrying fast-green-positive blood (Fig. 4B, white arrows) and cellular aggregates (Fig. 4B, dotted line). Immunofluorescent staining for RBCs and hepatocytes [Ter-119 and arginase 1 [ARG-1], respectively) suggested the presence of perfused neovessels directly adjacent to hepatocyte aggregates (Fig. 4B, Right). Hepatic tissues containing EC cords exhibited significantly greater albumin promoter activity for at least 20 d PI compared with tissues with no EC cords (Fig. 4C), suggesting a direct benefit from the cords.

To explore whether this vascularization strategy has potential to enable applications such as human tissue replacement or humanized mouse models, we tested whether coimplantation of EC cords could support primary human hepatocytes. Similar to constructs with rat hepatocytes and EC cords, constructs with human hepatocytes and EC cords exhibited Sirius red-positive collagen cores in graft areas (Fig. 4D, Left; black arrows). Further staining with both Sirius red and fast green suggested the presence of capillaries containing blood (white arrows) as well as cellular aggregates (dotted line) adjacent to collagen-rich cores (Fig. 4D, Center; black arrows). Importantly, triple immunostaining demonstrated that capillaries in the graft were lined with human endothelium (huCD31, red), contained erythrocytes (Ter-119, white), and were close to aggregates containing hepatocytes (ARG-1, green) (Fig. 4D, Right). Tissue constructs containing human hepatocyte aggregates and EC cords (“EC Cord”) exhibited significantly higher levels of albumin promoter activity compared with both constructs without cords (“No EC”) and constructs with randomly seeded endothelial and 10T1/2 cells (“Random EC”; Fig. 4E). To test whether enhanced hepatic function in animals with EC cords was the result of direct paracrine signaling between adjacent EC cords and hepatocytes or of improved access to a blood supply, we severed the parametrial fat pad upstream of our constructs immediately after implantation to reduce blood supply (“EC Cord Ligated”; Fig. 4E). Bioluminescence imaging was performed 20 min after luciferin injection at each time point, which we confirmed to be adequate time for diffusion-based permeation of the construct in ligated control tissues by DAPI (a small molecule similar in size to luciferin; Fig. S6). Poor functional performance of ligated control constructs suggested that enhanced hepatocyte activity in the presence of EC cords was a result of improved access to blood-carrying vasculature (Fig. 4E). Taken together, these results show that geometric control of endothelial and mural cells during prevascularization of tissue constructs enhances vascular blood supply and improves survival and function of human hepatic tissue.

Discussion

Several recent studies have shown that combining randomly distributed ECs with supportive stromal cells provides a means to induce the formation of stable vasculature in a tissue engineered implant (3, 9, 13, 15, 16, 21). Allowing these cells to form interconnected networks in culture before implantation (prevascularization) appears to improve the rapidity and extent of the vascularization response (1, 4, 5, 10). Here, we introduce the concept of prepatterning the cells using microfabrication

Intricate interactions among hepatocytes, ECs, and other nonparenchymal cell populations are critical for efficient macromolecular and drug transport as well as response to regenerative cues in the liver. For example, hypoxic hepatocytes express angiogenic factors that recruit ECs (and other nonparenchymal cells) in liver injury and repair, and liver sinusoidal ECs secrete “angiocrine” signals that mediate liver regeneration (29, 30). Furthermore, the 3D spatial arrangement of these cells is tightly regulated in development, has been suggested to at least partially coordinate regeneration, and is dysfunctional in pathological states such as cirrhosis (31). Although models have been developed to “prevascularize” engineered hepatic and hepatoma tissue using ECs in vitro (32, 33), the fate of prevascularized constructs after in vivo implantation had not been documented before our study. Here, we demonstrate that implantation of engineered tissue containing primary hepatocytes and geometrically defined endothelial cords stabilized by stromal cells augments hepatic albumin activity following transplantation. Importantly, vessel organization and perfusion with blood were both critical to functional benefit, as this effect was not seen in constructs containing randomly seeded ECs or with cords lacking a blood supply. Thus, by improving tissue perfusion through the geometric control over implanted cells, this work provides a strategy to enable improved tissue integration function due to enhanced blood supply.

Materials and Methods

EC cords were micropatterned as previously described (17). HUVECs and 10T1/2s were suspended at a ratio of 50:1 in 2.5 mg/mL liquid collagen (BD Biosciences) and centrifuged into PDMS channels pretreated with 0.01% Pluronic F-127. Excess unpolymerized collagen and cells were removed by dewetting the surface of the substrate. The collagen was polymerized, growth medium was added, and constructs were incubated for 4–6 h. The newly formed cords were removed from the PDMS substrates by inverting onto a drop of unpolymerized 7.5 mg/mL bovine fibrin (Sigma-Aldrich). After the fibrin was polymerized, the PDMS was removed, and a second layer of unpolymerized fibrin was added and polymerized to fully encase the cords. The embedded cords were cut with a 6-mm biopsy punch before implantation. To include hepatocytes in the constructs, hepatic aggregates comprising ~100 hepatocytes and 25 J2 fibroblasts were formed in AggreWell micromodels overnight and suspended at a concentration of 15K/mL in the fibrin gel. Random HUVEC conditions included 2×10^6 HUVECs per milliliter and 10T1/2s at a 50:1 ratio in fibrin. For decellularization, constructs were immersed in 8 mM CHAPS, 1 M NaCl, and 25 mM EDTA in PBS and placed on an orbital shaker overnight. Excess cellular debris and detergent were then removed by soaking the constructs multiple times in PBS on an orbital shaker for several hours. For more details, please see *SI Materials and Methods*.

ACKNOWLEDGMENTS. We thank C. Choi, M. Wozniak, H. Fleming, and E. Vasile for helpful discussions, the P. Zandstra laboratory for AggreWell micromodels, and Charles Rice for lentivirus. This work was supported by National Institutes of Health (NIH) Grants EB08396 and EB00262. Individual fellowship support was provided by NIH National Research Service Award 1F32DK091007 (to K.R.S.) and 5T32AR007132-35 (to R.R.C.). S.N.B. is a Howard Hughes Investigator.

- Vacanti JP, Langer R (1999) Tissue engineering: The design and fabrication of living replacement devices for surgical reconstruction and transplantation. *Lancet* 354(Suppl 1):S132–S134.
- Lovett M, Lee K, Edwards A, Kaplan DL (2009) Vascularization strategies for tissue engineering. *Tissue Eng Part B Rev* 15(3):353–370.
- Jain RK (1999) Transport of molecules, particles, and cells in solid tumors. *Annu Rev Biomed Eng* 1:241–263.
- Folkman J (2002) Looking for a good endothelial address. *Cancer Cell* 1(2):113–115.
- Radisic M, et al. (2003) High-density seeding of myocyte cells for cardiac tissue engineering. *Biotechnol Bioeng* 82(4):403–414.
- Reid LM, Fiorino AS, Sigal SH, Brill S, Holst PA (1992) Extracellular matrix gradients in the space of Disse: Relevance to liver biology. *Hepatology* 15(6):1198–1203.
- Richardson TP, Peters MC, Ennett AB, Mooney DJ (2001) Polymeric system for dual growth factor delivery. *Nat Biotechnol* 19(11):1029–1034.
- Lee KY, Peters MC, Anderson KW, Mooney DJ (2000) Controlled growth factor release from synthetic extracellular matrices. *Nature* 408(6815):998–1000.
- Koike N, et al. (2004) Tissue engineering: Creation of long-lasting blood vessels. *Nature* 428(6979):138–139.
- Chen X, et al. (2009) Prevascularization of a fibrin-based tissue construct accelerates the formation of functional anastomosis with host vasculature. *Tissue Eng Part A* 15(6):1363–1371.
- Melero-Martin JM, et al. (2008) Engineering robust and functional vascular networks in vivo with human adult and cord blood-derived progenitor cells. *Circ Res* 103(2):194–202.
- Kang K-T, Allen P, Bischoff J (2011) Bioengineered human vascular networks transplanted into secondary mice reconnect with the host vasculature and re-establish perfusion. *Blood* 118(25):6718–6721.
- Levenberg S, et al. (2005) Engineering vascularized skeletal muscle tissue. *Nat Biotechnol* 23(7):879–884.
- Kaufman-Francis K, Koffler J, Weinberg N, Dor Y, Levenberg S (2012) Engineered vascular beds provide key signals to pancreatic hormone-producing cells. *PLoS One* 7(7):e40741.
- Koffler J, et al. (2011) Improved vascular organization enhances functional integration of engineered skeletal muscle grafts. *Proc Natl Acad Sci USA* 108(36):14789–14794.
- Stevens KR, et al. (2009) Physiological function and transplantation of scaffold-free and vascularized human cardiac muscle tissue. *Proc Natl Acad Sci USA* 106(39):16568–16573.
- Raghavan S, Nelson CM, Baranski JD, Lim E, Chen CS (2010) Geometrically controlled endothelial tubulogenesis in micropatterned gels. *Tissue Eng Part A* 16(7):2255–2263.
- Debbage PL, et al. (2001) Intravital lectin perfusion analysis of vascular permeability in human micro- and macro- blood vessels. *Histochem Cell Biol* 116(4):349–359.
- Debbage PL, et al. (1998) Lectin intravital perfusion studies in tumor-bearing mice: Micrometer-resolution, wide-area mapping of microvascular labeling, distinguishing efficiently and inefficiently perfused microregions in the tumor. *J Histochem Cytochem* 46(5):627–639.
- Brophy CM, et al. (2009) Rat hepatocyte spheroids formed by rocked technique maintain differentiated hepatocyte gene expression and function. *Hepatology* 49(2):578–586.
- Chen X, et al. (2010) Rapid anastomosis of endothelial progenitor cell-derived vessels with host vasculature is promoted by a high density of cotransplanted fibroblasts. *Tissue Eng Part A* 16(2):585–594.
- Cheng G, et al. (2011) Engineered blood vessel networks connect to host vasculature via wrapping-and-tapping anastomosis. *Blood* 118(17):4740–4749.
- Vacanti JP (2012) Tissue engineering and the road to whole organs. *Br J Surg* 99(4):451–453.
- Chen RR, Silva EA, Yuen WW, Mooney DJ (2007) Spatio-temporal VEGF and PDGF delivery patterns blood vessel formation and maturation. *Pharm Res* 24(2):258–264.
- Jeong JH, et al. (2012) “Living” microvascular stamp for patterning of functional neovessels; orchestrated control of matrix property and geometry. *Adv Mater (Deerfield Beach Fla)* 24(1):58–63, 1.
- White SM, et al. (2012) Longitudinal in vivo imaging to assess blood flow and oxygenation in implantable engineered tissues. *Tissue Eng Part C Methods* 18(9):697–709.
- Intaglietta M, Johnson PC, Winslow RM (1996) Microvascular and tissue oxygen distribution. *Cardiovasc Res* 32(4):632–643.
- Pittman RN (1995) Influence of microvascular architecture on oxygen exchange in skeletal muscle. *Microcirculation* 2(1):1–18.
- Rosmorduc O, Housset C (2010) Hypoxia: A link between fibrogenesis, angiogenesis, and carcinogenesis in liver disease. *Semin Liver Dis* 30(3):258–270.
- Ding B-S, et al. (2010) Inductive angiocrine signals from sinusoidal endothelium are required for liver regeneration. *Nature* 468(7321):310–315.
- Matsumoto K, Yoshitomi H, Rossant J, Zaret KS (2001) Liver organogenesis promoted by endothelial cells prior to vascular function. *Science* 294(5542):559–563.
- McGuigan AP, Sefton MV (2006) Vascularized organoid engineered by modular assembly enables blood perfusion. *Proc Natl Acad Sci USA* 103(31):11461–11466.
- Nahmias Y, Berthiaume F, Yarmush ML (2007) Integration of technologies for hepatic tissue engineering. *Adv Biochem Eng Biotechnol* 103:309–329.