

RESEARCH ARTICLE

Open Access

Variants in the 3' UTR of *General Transcription Factor IIF, polypeptide 2* affect female calving efficiency in Japanese Black cattle

Shinji Sasaki^{1,5*}, Takayuki Ibi², Toshio Watanabe^{1,5}, Tamako Matsuhashi³, Shogo Ikeda⁴ and Yoshikazu Sugimoto¹

Abstract

Background: Calving efficiency can be described as the measure of a cow's ability to produce viable offspring within a specific period of time. This trait is crucial in beef cattle because calves are necessary both for the production of beef and for heifer replacements. Recently, the number of calves produced at 4 years of age (NCP₄) has been used to evaluate the calving efficiency of Japanese Black cattle. To identify variants associated with calving efficiency in Japanese Black cattle, we conducted a genome-wide association study (GWAS) using 688 animals with extreme NCP₄ values selected from 15,225 animals.

Results: We identified genetic variants on bovine chromosome 12 (BTA12) that were associated with NCP₄. The *General Transcription Factor IIF, polypeptide 2* (*GTF2F2*), located in the 132 kbp-associated region, proved to be in strong linkage disequilibrium. We found 15 associated variants in the promoter and the 3' UTR regions. Consistent with this finding, transcripts of *GTF2F2* derived from the haplotype (*Q*) with the increased number of calves were 1.33-fold more abundant than *q*-derived transcripts. Furthermore, luciferase assays revealed that the activity of the 3' UTR, a region that includes nine SNPs, was higher in constructs with the *Q* haplotype than in those with the *q* haplotype by approximately 1.35-fold. In contrast, the activity of the promoter region did not differ between haplotypes. The association was replicated in an independent sample of 827 animals that were randomly selected from the remainder of the cohort from the same farms used in the GWAS. In the replicated population, the frequency of the *Q* haplotype is 0.313, and this haplotype accounts for 2.69% of the total phenotypic variance. The effect of the *Q* to *q* haplotype substitution on NCP₄ was 0.054 calves. These findings suggest that variants in the 3' UTR of *GTF2F2* affect the level of *GTF2F2* mRNA, which is associated with calving efficiency.

Conclusions: This GWAS has identified variants in the 3' UTR of *GTF2F2* that were associated with the NCP₄ of Japanese Black cattle, and this association was validated in an independent sample. The *Q* haplotype will be immediately useful in improving the calving efficiency of Japanese Black cattle.

Keywords: Calving efficiency, Number of calves produced at 4 years of age (NCP₄), Genome-wide association study, *General Transcription Factor IIF, polypeptide 2* (*GTF2F2*), Beef cattle

* Correspondence: sasakis@siag.or.jp

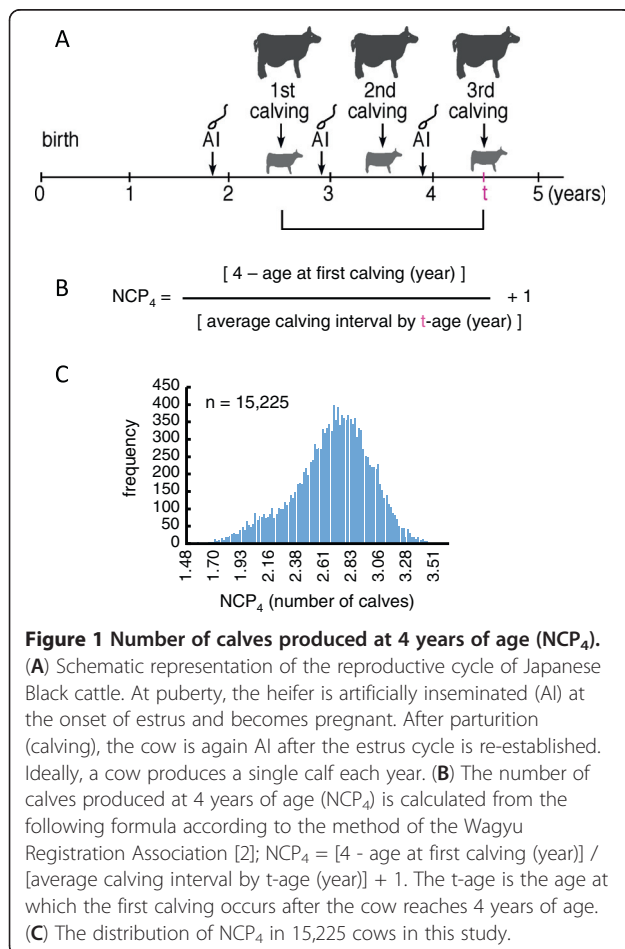
¹Shirakawa Institute of Animal Genetics, Japan Livestock Technology Association, Odakura, Nishigo, Fukushima 961-8061, Japan

⁵Present address: National Livestock Breeding Center, Odakura, Nishigo, Fukushima 961-8511, Japan

Full list of author information is available at the end of the article

Background

Calving efficiency is a major factor in determining the efficiency of beef cattle reproduction and directly connected to farm profitability because cow-calf producers sell their calves in calf markets in Japan. Recently, Oyama et al. developed a new index for calving efficiency, which is the measure of the number of calves produced at a specified age (NCP) [1]. Since 2008, the Wagyu Registry Association in Japan has been evaluating the calving efficiency of Japanese Black cattle nationwide according to the number of calves produced at 4 years of age (NCP₄) [1], a slight modification of the original formula (Figure 1A,B) [2]. The heritability of this trait for Japanese Black cattle was estimated to be approximately 0.1 [1,2]. This level of heritability is relatively high compared to those of other reproductive traits, such as days open and calving interval, the heritability of which were estimated to be 0.047 in the population [3]. Furthermore, NCP₄ maintains a high genetic correlation with subsequent calving performance [1], suggesting that NCP₄ may be an effective index for genetic analysis and for predicting calving efficiency.



To identify and confirm variants associated with calving efficiency in Japanese Black cattle, we conducted a genome-wide association study (GWAS) with selective genotyping for NCP₄ and a validation study of the association in an independent sample.

Results

A GWAS identified a quantitative trait locus (QTL) for NCP₄ on bovine chromosome 12 (BTA12) in Japanese Black cattle

The heritability of NCP₄ was estimated to be 0.11 using the numerator relationship matrix among 15,225 animals based on pedigree information, which was consistent with previous reports for Japanese Black cattle [1,2]. As shown in Figure 1C, the distribution was sufficiently wide to discriminate between higher- and lower-performance groups. We genotyped 357 cows from the upper extreme (93.3rd percentile) of the distribution and 331 cows from the lower extreme (6.68th percentile) among 15,225 records of NCP₄ using BovineSNP50K BeadChips. The 33,303 SNPs on autosomes that fulfilled our criteria were used for the association study.

The analysis was performed using EMMAX software [4], which is based on a linear mixed model approach using a genetic relationship matrix estimated by SNP genotypes to model the correlation between the phenotypes of the sample subjects. The genomic inflation factor (λ GC) in this analysis was 0.9964, indicating that the sample was not stratified in the population and thus was appropriate for an association study. The quantile-quantile (Q-Q) plot showed that three SNPs deviated from the distribution under the null hypothesis (Additional file 1). In this study, we used a genome-wide significance threshold at the $P < 2.5 \times 10^{-5}$ level [5-7]. Three SNPs on BTA12 reached genome-wide significance ($P < 8.4 \times 10^{-6} - 9.7 \times 10^{-6}$) (Figure 2, Table 1). The three SNPs were located within a 57-kbp window from 15,405,850 bp to 15,462,779 bp on BTA12 and proved to be in strong LD with each other ($D'=1$, r^2 ranging from 0.95 to 0.99). The region consisted of three haplotypes defined by the genotypes of the three associated SNPs (Table 1) in the GWAS sample; the frequencies of the Q haplotype and q haplotype were 0.36 and 0.63, respectively.

To define the region in more detail, the genotypes of 33,303 SNPs were imputed with haplotype information inferred from 586,812 SNPs in 1,041 Japanese Black cattle as a reference. The results showed that the average allelic matching error was 0.28%, and the average genotypic matching error was 0.55% across all of the chromosomes (Additional file 2), indicating that the imputation was highly accurate. Consequently, 35 SNP associations were detected within the 132-kbp window from 15,334,835 bp to 15,467,060 bp on BTA12 ($D'=1$,

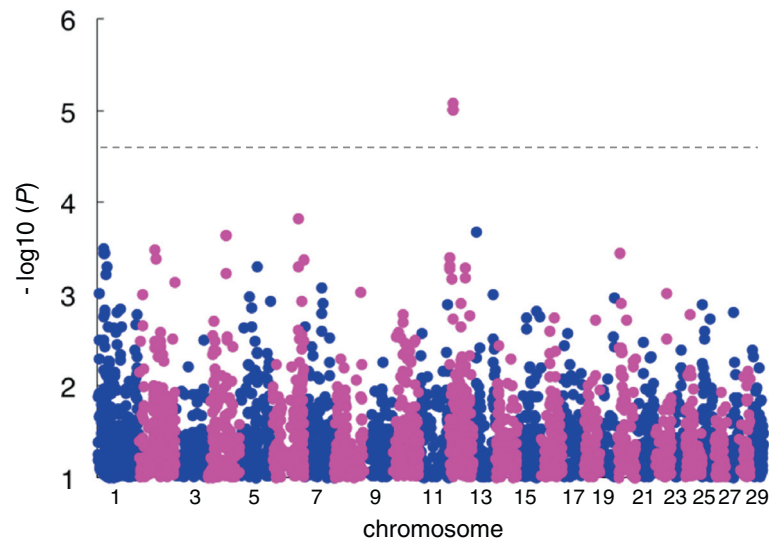


Figure 2 Manhattan plot of the association of 33,303 SNPs with NCP₄ in 688 Japanese Black cattle. The chromosomes are distinguished with alternating colors (blue, odd numbers; red, even numbers). The chromosome number is indicated on the x-axis. The dashed line is the genome-wide significance threshold ($-\log_{10}(P) = 4.60$) [5-7]. The vertical axis is broken for P values below $-\log_{10}(1)$.

r^2 ranging from 0.95 to 1.00) (Figure 3A,B, Additional file 3).

We then performed a conditioned analysis to ascertain whether there were any other associated SNPs of significance in the region. The genotype of one of the most closely associated SNPs, *BovineHD1200004575* (15,353,468 bp) on BTA12 (Figure 3C, Additional file 3), was individually included as a covariate in the linear mixed model. After conditioning, the associations of the other SNPs disappeared (Figure 3C, Additional file 3), indicating that the region contains a single QTL.

Variants in the *GTF2F2* region were associated with NCP₄

The LD region harbors two genes: *General Transcription Factor IIF, polypeptide 2 (GTF2F2)* and *Potassium Channel Tetramerization domain containing 4 (KCTD4)*, which is located in intron 4 of *GTF2F2* and is transcribed in the opposite direction (Figure 3A). To detect association polymorphisms in *GTF2F2* and *KCTD4*, we

sequenced all of the exons and upstream regions, beginning 3 kbp upstream of the start codon of each gene in three animals with Q - and q -homozygous haplotype that were defined by the genotypes of *BovineHD1200004575* (15,353,468 bp) and *BovineHD1200004611* (15,465,327 bp) (Additional files 3 and 4). In the *GTF2F2* region, we found one synonymous SNP in the coding region, five SNPs and one indel in the upstream region, and we found nine SNPs in the 3' UTR (Additional file 5). We also found a non-synonymous SNP (Ile 189 Val) and one indel in the region upstream of *KCTD4* (Additional file 5). To determine whether these variants of *GTF2F2* and *KCTD4* are associated with NCP₄, we genotyped the variants in the GWAS samples and analyzed the association with NCP₄ using EMMAX software with a genetic relationship matrix among animals. There was a total of 16 variants of the *GTF2F2* region that produced a highly significant signal ($P = 4.1 \times 10^{-5} - 5.28 \times 10^{-6}$), whereas the two variants of *KCTD4* were not associated with NCP₄

Table 1 SNPs with genome-wide significant associations with NCP₄ on BTA12

BTA	SNP-id	Position (bp)_UMD3.1	Allele in upper extreme	Minor allele frequency in upper extreme	Minor allele frequency in lower extreme	Allele in lower extreme	Odds ratio	P-value
12	<i>ARS-BFGL-NGS-94479</i>	15405850	A	0.3599	0.2523	G	1.667	8.401E-06
12	<i>Hapmap39990-BTA-31570</i>	15441597	A	0.3697	0.2628	C	1.645	9.787E-06
12	<i>Hapmap36290-SCAFFOLD191599_16698</i>	15462779	A	0.3697	0.2628	G	1.645	9.787E-06

SNPs positions are based on the UMD3.1 assembly of the bovine genome.

The upper extremes and lower extremes correspond to NCP₄ values above the 93.3rd percentile and below the 6.68th percentile, respectively.

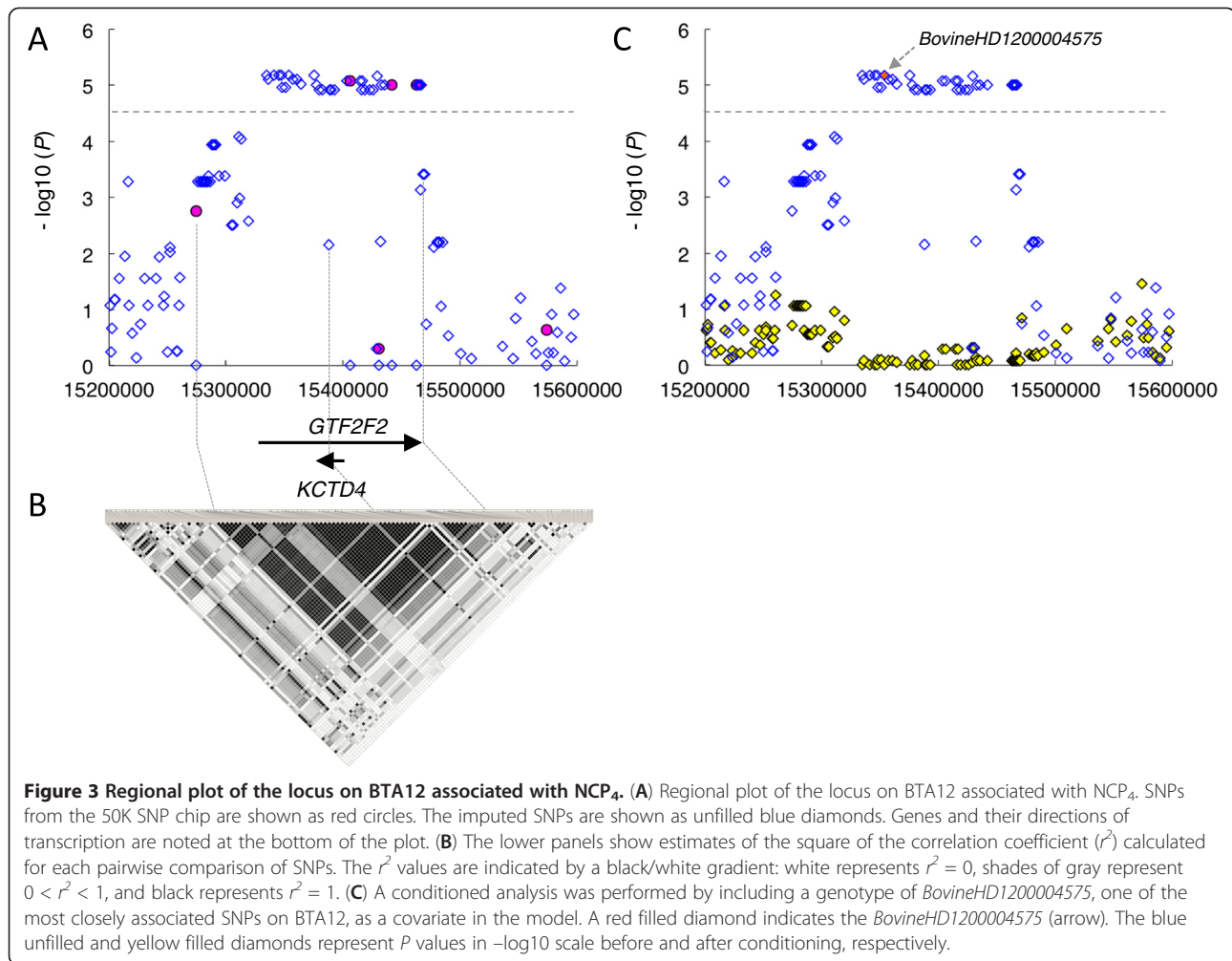


Figure 3 Regional plot of the locus on BTA12 associated with NCP₄. (A) Regional plot of the locus on BTA12 associated with NCP₄. SNPs from the 50K SNP chip are shown as red circles. The imputed SNPs are shown as unfilled blue diamonds. Genes and their directions of transcription are noted at the bottom of the plot. (B) The lower panels show estimates of the square of the correlation coefficient (r^2) calculated for each pairwise comparison of SNPs. The r^2 values are indicated by a black/white gradient: white represents $r^2 = 0$, shades of gray represent $0 < r^2 < 1$, and black represents $r^2 = 1$. (C) A conditioned analysis was performed by including a genotype of *BovineHD1200004575*, one of the most closely associated SNPs on BTA12, as a covariate in the model. A red filled diamond indicates the *BovineHD1200004575* (arrow). The blue unfilled and yellow filled diamonds represent P values in $-\log_{10}$ scale before and after conditioning, respectively.

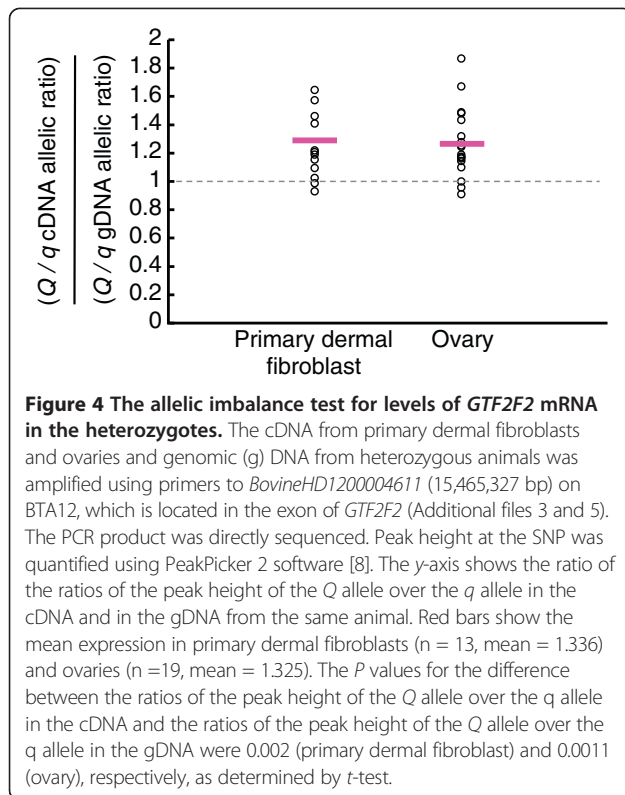
($P = 0.02 - 0.03$). These association studies suggest that the causative variants are located within the *GTF2F2* region.

Allelic imbalance level of *GTF2F2* mRNA

We observed that *GTF2F2* was expressed in the female reproductive organs as well as other tissues and cells, including fibroblasts (Additional file 6). Using an allelic imbalance test [8,9], we compared the relative abundance of *Q*- versus *q*-derived transcripts of *GTF2F2* in primary dermal fibroblasts ($n = 13$) and ovaries ($n = 19$) from heterozygotes. We isolated samples of genomic (g) DNA and cDNA derived from the same heterozygotes and amplified an SNP in the exon of *GTF2F2* (15,465,327 bp, Additional file 5), which is in strong LD with other *Q* alleles ($r^2 = 0.95 - 1$). We then compared their allelic ratios using PeakPicker2 software [8]. The results revealed that the *Q*-derived transcripts of *GTF2F2* were 1.33-fold more abundant than *q*-derived transcripts in both primary dermal fibroblasts and ovaries (Figure 4).

Variants in the 3' UTR of *GTF2F2* were involved in the allelic imbalance of the level of *GTF2F2* mRNA

In the *GTF2F2* region, we detected five SNPs and one indel in the upstream region and nine SNPs in the 3' UTR (Figure 5A and Additional file 5). The variants in the promoter region and the 3' UTR may affect promoter activity or mRNA stability, and they may contribute to the allelic imbalance of level of *GTF2F2* mRNA. To determine whether the variants are involved in the level of *GTF2F2* mRNA, we cloned the promoter region, beginning 2,964 bp upstream of the start codon, and 935 bp of the 3' UTR from both the *Q* and *q* haplotypes into luciferase reporter constructs (Figure 5A and Additional file 5). We then transfected HeLa cells (Figure 5B,C) and primary bovine endometrial epithelial cells (Figure 5D,E), expressing endogenous *GTF2F2* (Additional file 6), with these constructs and measured the resulting luciferase activity 24 hr after transfection. The activity of the 3' UTR was approximately 1.35-fold higher for the *Q* constructs than for the *q* constructs; *t*-test, $P = 0.009$ and 0.023 , respectively (Figure 5C,E). In



contrast, similar levels of luciferase activity were stimulated by the promoter regions from both haplotypes (Figure 5B,D). These results suggest that the variants, including the nine SNPs in the 3' UTR of *GTF2F2*, affect the level of *GTF2F2* mRNA, which may lead to an allelic imbalance in the levels of *GTF2F2* mRNA.

The associated SNP was replicated in an independent sample set

Cross-validation of the GWAS results from independent samples may decrease the rate of false positives. We examined whether the Q haplotype, defined by *BovineHD1200004575* (15,353,468 bp) and *BovineHD1200004611* (15,465,327 bp; the SNP is located in the 3' UTR of *GTF2F2*) (Additional files 3, 4 and 5), is associated with NCP_4 in an independent sample set. We genotyped 827 animals that were randomly selected from the remainder of the cohort from the same farms used in the GWAS (Additional file 7). The distribution of the phenotypic values of the samples was similar to that of the parent population (Figure 1C and Additional file 7). The result showed that the Q-homozygous haplotype (A-G) was significantly associated with NCP_4 compared to the q-homozygous haplotype (G-A); Tukey-Kramer post-hoc test, $P = 0.0207$ (Table 2). The haplotype frequency of Q is 0.313, indicating that the haplotype is common

in Japanese Black cattle. We fitted a linear mixed model to the NCP_4 values in the additive model and used restricted maximum likelihood (REML) to estimate the variance explained by the haplotype. We estimated the proportion of phenotypic variance explained by the haplotype as 0.0269 (Table 2), indicating that the haplotype accounts for 27% of the total genetic variance. The Q to q haplotype substitution effect on NCP_4 was 0.054 calves (Table 2).

Discussion

A substantial fraction of the environmental variance in NCP_4 is attributed to farm variance [1], implying that minimizing the farm effect is particularly important in QTL mapping for NCP_4 . In this study, we collected a large number of reproductive records from 11 farms that were directly and uniformly managed by a single farming company.

In the current GWAS, we found that three SNPs in *GTF2F2* on BTA12 were associated with NCP_4 in Japanese Black cattle (Figure 2 and Table 1). In Japanese Black cattle, the effective population size is small [10], and concomitantly, the number of haplotypes is limited. Accordingly, highly accurate imputation could be achieved with fine resolution using 1,041 animals with high-density genotypes as a reference (Additional file 2). The current imputation analysis revealed that additional 32 SNPs were also associated with NCP_4 within a 132-kbp window, and they proved to be in strong LD with each other (Figure 3A,B and Additional file 3). Furthermore, a conditioned analysis revealed that a single QTL was present in the region (Figure 3C and Additional file 3).

We did not find any non-synonymous amino acid substitutions in the exons of *GTF2F2*. This observation is consistent with the increasing evidence that regulatory DNA variants controlling gene expression play a significant role in complex traits [9,11,12]. We compared the allelic mRNA ratio within the same heterozygous sample using an allelic imbalance test because it is more sensitive than quantitative RT-PCR and it is less affected by variation among samples [8,9]. We found larger amounts of *GTF2F2* mRNA from the Q allele (approximately 1.33-fold more) than *GTF2F2* mRNA bearing the q allele (Figure 4). In an attempt to identify the mechanism underlying this difference in the level of *GTF2F2* mRNA, we found that the level of luciferase activity driven by the 3' UTR of *GTF2F2* that included nine SNPs was higher for the Q haplotype than for the q haplotype (Figure 5C,E). These results suggest that the variants in the 3' UTR of *GTF2F2* may affect the level of *GTF2F2* mRNA, which, in turn, may influence calving efficiency. Recently accumulated evidence suggests that polymorphisms in the 3' UTR can alter RNA secondary structure

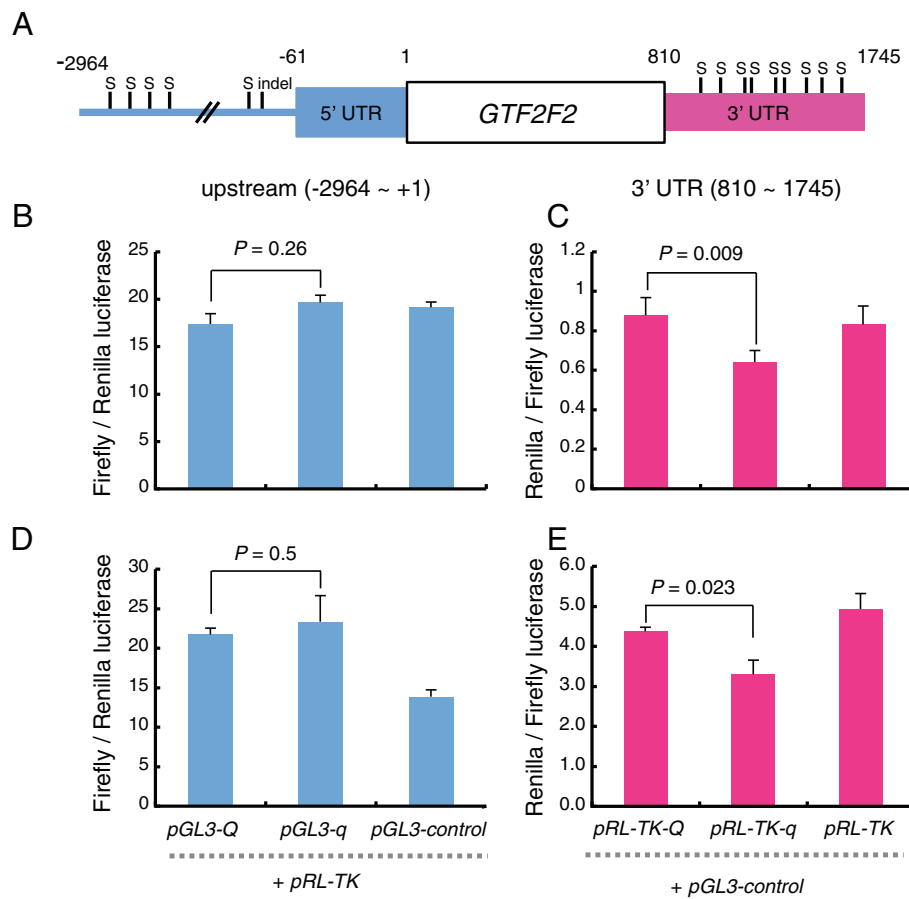


Table 2 The proportion of phenotypic variance attributed to haplotype associated with *NCP₄*

BTA	Haplotype	Position (bp)_UMD3.1	Q haplotype	Number of animals genotyped for the SNP	Q haplotype frequency	Heritability (h^2)	Haplotype effect on total phenotypic variance ¹	Q to q haplotype substitution effect (calves) ²	P-value ³
12	BovineHD1200004575 and BovineHD1200004611	15353468 and 15465327	A-G	827	0.313	0.11	0.0269	0.054	0.0207

¹The effect of the haplotype was estimated as the least square mean values of GLM analysis. The statistical model for GLM analysis included fixed effects for the farm, birth year and haplotype. The genetic variance explained by the haplotype was calculated based on estimates of the haplotype effect and the frequency of the haplotype [40]. Total genetic variance was estimated by MTDf-REML programs. The effect size of a haplotype was estimated as the proportion of genetic variance explained by the haplotype.

²The average *NCP₄* values for QQ and qq are 2.789 days and 2.683 calves.

³The results were tested by a one-way ANOVA, followed by a Tukey-Kramer test for multiple comparisons.

as well as the miRNA binding site [12-14]. At present, we have not found any regulatory RNA motifs or miRNA binding sites in the 3' UTR of *GTF2F2* that differ between the *Q* and *q* haplotypes using databases such as RegRNA [15], Patrocle [16] or mirBase [17]. However, many SNPs associated with a broad range of complex traits alter the RNA structure [18]. Because the variants in the 3' UTR influence its expression level, the variant should have the functional effect.

The level of luciferase activity driven by the 3' UTR of *GTF2F2* that included nine SNPs was approximately 1.35-fold higher for the *Q* haplotype than for the *q* haplotype (Figure 5C,E). This magnitude is comparable to that observed in the allelic imbalance test (Figure 4). Recently, causative variants affecting bovine stature have been identified in the promoter of *PLAG1*, and the level of *PLAG1* mRNA of the *Q* allele was slightly larger (approximately 1.36- to 1.81-fold) than that of the *q* allele in bone and muscle [9]. The quantitative difference between the *Q* and *q* animals was similar to that observed in our study, implying that a slight difference in the level of mRNA may have a large effect on phenotypic variance in some circumstances.

GTF2F2 is ubiquitously expressed in bovine tissues (Additional file 6). *GTF2F2*, together with general transcription factor IIF, polypeptide 1 (*GTF2F1*), forms a heteromeric general transcription initiation factor (TFIIF) [19,20] that binds to DNA-dependent RNA polymerase II [21], the enzyme responsible for synthesizing mRNA. *GTF2F2* has been shown to be necessary for initiation and elongation in gene transcription [22,23]. Although an increase in the expression of *GTF2F2* by allelic imbalance may lead to a slight augmentation of the activity of the polymerase, many genes driven by RNA polymerase II throughout the body could be widely affected and in turn could affect calving efficiency. Further studies about *GTF2F2* could help elucidate the mechanisms underlying *GTF2F2* function in calving efficiency.

Calving efficiency is influenced by several factors, including the onset of puberty; the ability to conceive, gestate, deliver a calf, re-enter the estrous cycle for the next pregnancy; and the duration of each of these reproductive phases. To date, particular attention has been focused on finding QTLs associated with each component, and several QTLs have been identified previously [6,7,24-29]. Although each trait is of interest in improving reproductive performance, comprehensive traits for calving efficiency, such as NCP_4 , may be effective indices for beef cattle breeding because NCP_4 is directly calculated by measuring the ability of a cow to produce viable offspring.

Finally, we confirmed that the association was replicated in an independent, randomly selected sample (Table 2 and Additional file 7), which further strengthens the evidence

for this location being the QTL. In the population, the frequency of the *Q* haplotype is 0.313 (Table 2), indicating that the haplotype is common in the Japanese Black cattle population. This QTL can be considered the major determinant for NCP_4 in Japanese Black cattle, as this haplotype accounts for one fourth of the total genetic variance. Importantly, the *Q* haplotype does not have an adverse effect on calf production. Taken together, these markers will be useful for marker-assisted selection for NCP_4 in Japanese Black cattle.

Conclusions

This genome-wide association study demonstrated that the variants in the 3' UTR of *GTF2F2* were associated with NCP_4 , and this association was validated in an independent sample. The use of the *Q* haplotype will be immediately beneficial in improving calving efficiency in Japanese Black cattle.

Methods

Ethics statement

All animal experiments were performed according to the Guidelines for the Care and Use of Laboratory Animals of Shirakawa Institute of Animal Genetics, and this research was approved by Shirakawa Institute of Animal Genetics Committee on Animal Research (H21-2).

Collection of phenotypic data

Data were collected from farms managed by a large cooperative farming company raising Japanese Black cattle in Japan. The management system for Japanese Black cattle was described in a previous study [30,31]. The original data included 63,775 records of reproductive females born from 1992 to 2006. The data were selected using the following nine criteria for analysis: 1) data should be present for the cow from the first calving to the first calving after the age of 4 years; 2) the cow should not have had twins in parturition; 3) the cow should not have received any embryo transfers; 4) the cow should not have had abortions; 5) the length of all gestations should range from 261 to 310 days; 6) the calving interval should range from 276 to 730 days; 7) the age of the cow at the first calving should be less than 1,128 days; 8) the cow should be reared at a single farm; and 9) each breeding farm should have more than 10 records from each birth year.

After applying these selection criteria, the final dataset contained 15,225 records. The number of calves produced at 4 years of age (NCP_4) was calculated from the following formula according to the Wagyu Registration Association [2]: $NCP_4 = [4 - \text{age at first calving (year)}] / [\text{average calving interval by (t-age)} + 1]$ (Figure 1A,B). The t-age is the age at first calving after the age of 4 years. Each NCP_4 value was corrected for the effects of

farm and birth year. These effects were calculated as solutions of the REML procedure using MTDf-REML programs [32]. In this analysis, pedigree information was traced back two generations. The statistical model included fixed effects for the farm (174 farms) and birth year (1992 to June 2006). Direct genetic and residual effects were included as random effects.

Selection of samples for GWAS and collection of DNA samples

Samples were selected from the 6.68% most extreme upper and lower performance values among 15,225 records of NCP₄ from 11 farms directly managed by the cooperative farming company. To reduce population stratification, we selected fewer than five cows derived from a single sire in each extreme, resulting in 357 cows for the upper extreme and 331 cows for the lower extreme. The upper extreme included the offspring of 150 sires, and the lower extreme included the offspring of 128 sires. Whole blood was collected from each cow, and genomic DNA was isolated using the Easy-DNA kit (Invitrogen, cat# K1800-01).

Genotypes and quality control

The DNA samples for the GWAS from 688 Japanese Black cattle were genotyped using the BovineSNP50K BeadChip (version 1, Illumina). Additionally, DNA samples for imputation from 1,041 Japanese Black cattle were genotyped using the BovineHD BeadChip (Illumina). The UMD3.1 assembly [33] was used to map the position of the SNPs. The SNP flanking sequences were provided by Illumina, Inc. (Additional file 8). The data were analyzed using PLINK v1.07 software [34]. The SNPs fulfilled our quality control criteria, which required a call rate greater than 99%, a minor allele frequency (MAF) greater than 0.01, and a chi-square test for Hardy-Weinberg equilibrium (HWE) *P* value greater than 0.001. Among the 777,962 SNPs on the BovineHD BeadChip, 586,812 autosomal SNPs fulfilled our quality control criteria. Among 54,001 SNPs on the BovineSNP50 BeadChip, 33,303 autosomal SNPs fulfilled our quality control and inclusion criteria, which required that the SNPs be included in the 586,812 SNPs on the BovineHD BeadChip.

GWAS for NCP₄

An association analysis was performed for the 688 samples using EMMAX software [4] based on a linear mixed model with a genetic relationship matrix. The software carried out the tests in the spirit of Armitage using a simple standard linear regression framework with 0–1 quantitative response variables representing the upper and lower extremes. In a conditioned analysis, the

genotype of the SNP associated with NCP₄ was included as a covariate.

We used the Lander and Kruglyak method to identify genome-wide significance thresholds [5]. This method accounts for the effective number of tests within the genome. The genome-wide significance level is $\mu(T) = [C + 2\rho GT^2]\alpha(T)$, where *T* is the value of the test statistic, *C* is the number of chromosomes, *G* is the length of the genome in Morgans (excluding the sex chromosomes), and ρ is the expected rate of recombination, which was taken as 2 [6,7]. The point-wise significance level of exceeding *T* is $\alpha(T)$. The genome-wide 5% significance threshold corresponds to 2.5×10^{-5} .

Linkage disequilibrium and diplotype analysis

Haploview 4.2 [35] was used to analyze the linkage disequilibrium among the SNPs. The diplotypes of the GWAS samples were estimated using fastPHASE 1.2 software [36] and BEAGLE 3.3.2 software [37,38].

Imputation and evaluation of imputation accuracy

The genotypes of 33,303 SNPs were imputed using BEAGLE 3.3.2 software [37,38], with haplotype information inferred from 586,812 SNPs in 1041 Japanese Black cattle used as a reference.

The imputation accuracy was evaluated in 793 animals from the high-density dataset (BovineHD BeadChip) to assess the quality of the imputed genotypes. Genotypes were masked for all SNPs except the 33,303 SNPs corresponding to the BovineSNP50K BeadChip (version 1). Genotypes for the 553,509 masked SNPs were inferred using BEAGLE 3.3.2, and imputed genotypes were compared with true genotypes using CalcMatch software developed by Yun Li [39].

Expression analysis

For real-time quantitative PCR, we extracted total RNA from cow tissues using RNeasy mini kits (QIAGEN, cat#74104), and total RNA was treated with DNase I. The cDNA was synthesized from 50 ng RNA using ReverTra Ace- α (TOYOBO, cat#FSK-101) with random primers according to the manufacturer's instructions. *GTF2F2* was amplified with the following primers and probe: forward, 5'-gctggagaactcgacactgac-3'; reverse, 5'-agccattgctgcgacaaa-3'; and probe, 5'-ttaggaaaccttgaccagccactcgcg-3'. Real-time PCR was performed on a 7900HT Real-Time PCR system (Applied Biosystems) using the comparative Ct method with *glyceraldehyde-3-phosphate dehydrogenase* (*GAPD*) as the internal control.

Allelic imbalance test

To quantify the allelic imbalance of *GTF2F2* transcripts, we designed PCR primers to *BovineHD1200004611*

(15465327 bp) on BTA12, located in the 3' UTR of *GTF2F2* (Additional files 3 and 5). The forward primer was 5'-aaaacaggtggtgtgtctca-3', and the reverse primer was 5'-ccttaccctacaacctctct-3'. We used 50 ng of template cDNA from primary dermal fibroblasts and ovaries and 10 ng of genomic DNA from heterozygous animals for PCR amplification with the TaKaRa Ex Taq HS DNA polymerase (TaKaRa, cat#RR006). The PCR product was directly sequenced. The peak height at the polymorphic site was quantified using PeakPicker 2 software [8]. Allelic imbalance was estimated as the ratio of the ratios of the peak height of the *Q* allele over the *q* allele in the cDNA and in the genomic DNA (gDNA) from the same animal. Calibration curves were generated using data obtained by mixing varying amounts of gDNA from *Q* and *q* homozygotes [9].

Luciferase reporter assay

To measure the effects of the five SNPs and one indel within the upstream region (2,964 bp upstream of the start codon) and the nine SNPs within the 3' UTR of *GTF2F2* (935 bp) on transcription (Additional file 5), each haplotype (*Q* haplotype and *q* haplotype) was PCR amplified from gDNA. The following primers were used for the upstream region: forward primer (5'-GGGGTAC Cctatccatggggttctccag-3'; uppercase indicates the *KpnI* linker) and reverse primer (5'-TCCCCCGGGgacctgcgga cttagagcag-3'; uppercase indicates the *SmaI* linker). The following primers were used for the 3' UTR: forward primer (5'- GCTCTAGAgagcccgctaacagaact-3'; uppercase indicates the *XbaI* linker) and reverse primer (5'- GCTCTAGAaccatggacaggtattgtttt-3'; uppercase indicates the *XbaI* linker). The PCR products were digested with *KpnI-SmaI* or *XbaI* and then cloned into the *KpnI-SmaI* site of pGL3-basic (Promega, cat#E1751) or the *XbaI* site of pRL-TK (Promega, cat#E2241), respectively. The sequence of the insert and the direction were confirmed by sequencing. For cell culture, HeLa S3 cells were maintained in Dulbecco's modified Eagle's medium (DMEM) with 10% fetal calf serum (FCS) supplemented with 2 mM glutamine, penicillin (100 units/ml) and streptomycin (100 mg/ml). Bovine endometrial epithelial cells (BEnEpC, Cell Application, Inc., cat# B932-05) were maintained according to the manufacturer's instructions. Using Lipofectamine 2000 (Invitrogen, cat#11668-019), we transfected 1×10^5 cells per well in a 24-well plate with a mixture of 400 ng of the reporter and 40 ng of pRL-TK Renilla or of pGL3-control firefly luciferase to calibrate transfection efficiency. The luciferase assay was performed 24 hr after transfection using the Dual Luciferase Reporter Assay system (Promega, cat#E1910) and GloMax (Promega).

Replication study

For the replication study, we used 827 samples from the remainder of the cohort from the same farms used in the GWAS (Additional file 7). *BovineHD1200004575* (15,353,468 bp) and *BovineHD1200004611* (15,465,327 bp) were genotyped by direct sequencing of PCR products using each primer pair (Additional file 4). PCR products were sequenced using BigDye Terminator v.3.1 Cycle Sequencing Kits (Applied Biosystems), followed by electrophoresis using an ABI 3730 sequencer (Applied Biosystems), and typed using SeqScape V2.5 (Applied Biosystems).

Estimation of the genetic variance explained by haplotype and effect size of haplotype

The effect of the haplotype were estimated as the least square mean values of generalized linear model (GLM) analyses. The statistical model for GLM analysis included fixed effects for the farm, birth year and haplotype. The genetic variance explained by the haplotype was calculated based on estimates of the haplotype effect and the frequency of the haplotype [40]. Total genetic variance was estimated by MTDF-REML. The effect size of a haplotype was estimated as the proportion of genetic variance explained by the haplotype.

Additional files

Additional file 1: Quantile-quantile plots of the genome-wide association results for NCP₄. The red dots represent the observed $-\log_{10} P$ values, and the straight line represents the expected $-\log_{10} P$ values under the null hypothesis.

Additional file 2: Accuracy of imputation. Imputation accuracy was evaluated among 793 animals from the high-density dataset (BovineHD BeadChip) to assess the quality of the imputed genotypes. Genotypes were masked for all SNPs except for the 33,303 SNPs corresponding to the 50K BeadChip (version1, Illumina). Genotypes for the 553,509 masked SNPs were inferred using BEAGLE 3.3.2 [37,38], and imputed genotypes were compared with true genotypes using CalcMatch software [39]. The allelic discordance rate was calculated as follows: $1 - \text{matched allele} / 2 / \text{masked genotype}$. The genotypic discordance rate was calculated as follows: $1 - \text{matched genotype} / \text{masked genotype}$.

Additional file 3: The imputed SNPs associated with NCP₄ on BTA12. SNPs belonging to the BovineSNP50K BeadChip (version 1) are designated by *. The SNP positions are based on the UMD3.1 assembly of the bovine genome. The upper extremes and lower extremes correspond to NCP₄ values above the 93.3rd percentile and below the 6.68th percentile, respectively.

Additional file 4: Primer information for *BovineHD1200004575* and *BovineHD1200004611*.

Additional file 5: The positions of the variants in *GTF2F2* and *KCTD4* on BTA12. The SNPs positions are based on the UMD3.1 assembly of the bovine genome. The upper extremes and lower extremes correspond to NCP₄ values above the 93.3rd percentile and below the 6.68th percentile, respectively. Synonymous substitution is represented by *. *KCTD4* is located in intron 4 of *GTF2F2* and is transcribed in the opposite direction.

Additional file 6: Relative expression of *GTF2F2* in cow tissues and cells. Tissues and cells are indicated on the y-axis. Total RNA was

extracted from tissues (1–17) and primary dermal fibroblasts (18) derived from two female Japanese Black cattle and from bovine primary endometrial epithelial cells (19). All samples and genes were analyzed in triplicate. Relative gene expression levels in the different tissues are shown as the mean quantity relative to the value obtained from the ovarian sample (dotted line).

Additional file 7: The distribution of NCP₄ in 827 cows for the replication study. A sample (n = 827) was derived from the remainder of the cohort from the same farms used in the GWAS.

Additional file 8: SNP information associated with NCP₄. SNP positions are based on the UMD3.1 assembly of the bovine genome. SourceSeq are SNP flanking sequences, which were provided by Illumina, Inc. Nucleotides in the SNPs are shown in brackets.

Abbreviations

GWAS: Genome-wide association study; NCP₄: Number of calves produced at 4 years of age; QTL: Quantitative trait locus or loci; BTA: Bovine (*Bos taurus*) chromosome; SNP: Single nucleotide polymorphism; LD: Linkage disequilibrium; PCR: Polymerase chain reaction.

Competing interests

The authors declare no conflicts of interest.

Authors' contributions

SS, TI, TW and YS designed the research; SS performed the GWAS analysis; TI collected and analyzed the data; SS and TI performed replication studies; SS, TM and SI performed expression analyses; and SS, TI and YS wrote the manuscript. All authors read and approved the final manuscript.

Acknowledgements

We would like to thank Shota Nishimura for helping with the GWAS analysis and other members of the Shirakawa Institute of Animal Genetics, Mayumi Sugimoto, and Naohiko Kobayashi for their valuable suggestions. We are grateful to Emiko Watanabe, Kanako Yoshida, and Tomoko Masumoto for technical assistance. This work was supported by the Japan Racing and Livestock Promotion.

Author details

¹Shirakawa Institute of Animal Genetics, Japan Livestock Technology Association, Odakura, Nishigo, Fukushima 961-8061, Japan. ²Graduate School of Environmental and Life Science, Okayama University, Tsushima-naka, Okayama 700-8530, Japan. ³Gifu Prefectural Livestock Research Institute, Kiyomi, Takayama, Gifu 506-0101, Japan. ⁴Cattle Breeding Development Institute of Kagoshima Prefecture, Osumi, So, Kagoshima 899-8212, Japan. ⁵Present address: National Livestock Breeding Center, Odakura, Nishigo, Fukushima 961-8511, Japan.

Received: 21 December 2012 Accepted: 6 May 2013

Published: 10 May 2013

References

- Oyama K, Fujiwara S, Katsuta T, Honda T, Mukai F: **Number of calves produced at specified age as a measure of reproductive performance in beef cattle under artificially-inseminated breeding scheme.** *Asian-Aust J Anim Sci* 2009, **22**(2):162–167.
- Wagyu Registry Association: **The breeding value estimation for the number of calves produced at specified age (in Japanese).** *Wagyu* 2010, **252**(61):40–48.
- Oyama K, Katsuta T, Anada K, Mukai F: **Heritability and repeatability estimates for reproductive traits of Japanese Black cows.** *Asian-Aust J Anim Sci* 2002, **15**:1680–1685.
- Kang HM, Sul JH, Service SK, Zaitlen NA, Kong SY, Freimer NB, Sabatti C, Eskin E: **Variance component model to account for sample structure in genome-wide association studies.** *Nat Genet* 2010, **42**(4):348–354.
- Lander E, Kruglyak L: **Genetic dissection of complex traits: guidelines for interpreting and reporting linkage results.** *Nat Genet* 1995, **11**(3):241–247.
- Kim ES, Berger PJ, Kirkpatrick BW: **Genome-wide scan for bovine twinning rate QTL using linkage disequilibrium.** *Anim Genet* 2009, **40**(3):300–307.
- Schulman NF, Sahana G, Iso-Touru T, McKay SD, Schnabel RD, Lund MS, Taylor JF, Virta J, Vilkki JH: **Mapping of fertility traits in Finnish Ayrshire by genome-wide association analysis.** *Anim Genet* 2011, **42**(3):263–269.
- Ge B, Gurd S, Gaudin T, Dore C, Lepage P, Harmsen E, Hudson TJ, Pastinen T: **Survey of allelic expression using EST mining.** *Genome Res* 2005, **15**(11):1584–1591.
- Karim L, Takeda H, Lin L, Druet T, Arias JA, Baurain D, Cambisano N, Davis SR, Farnir F, Grisart B, et al: **Variants modulating the expression of a chromosome domain encompassing PLAG1 influence bovine stature.** *Nat Genet* 2011, **43**(5):405–413.
- Nomura T, Honda T, Mukai F: **Inbreeding and effective population size of Japanese Black cattle.** *J Anim Sci* 2001, **79**(2):366–370.
- Emison ES, McCallion AS, Kashuk CS, Bush RT, Grice E, Lin S, Portnoy ME, Cutler DJ, Green ED, Chakravarti A: **A common sex-dependent mutation in a RET enhancer underlies Hirschsprung disease risk.** *Nature* 2005, **434**(7035):857–863.
- Clop A, Marcq F, Takeda H, Pirottin D, Tordoir X, Bibe B, Bouix J, Caiment F, Elsen JM, Eychenne F, et al: **A mutation creating a potential illegitimate microRNA target site in the myostatin gene affects muscularity in sheep.** *Nat Genet* 2006, **38**(7):813–818.
- Abelson JF, Kwan KY, O'Roak BJ, Baek DY, Stillman AA, Morgan TM, Mathews CA, Pauls DL, Rasin MR, Gunel M, et al: **Sequence variants in SLITRK1 are associated with Tourette's syndrome.** *Science* 2005, **310**(5746):317–320.
- Yu Z, Li Z, Jolicoeur N, Zhang L, Fortin Y, Wang E, Wu M, Shen SH: **Aberrant allele frequencies of the SNPs located in microRNA target sites are potentially associated with human cancers.** *Nucleic Acids Res* 2007, **35**(13):4535–4541.
- RegRNA*. <http://regrna.mbc.nctu.edu.tw/html/about.html>.
- Patrocle*. <http://www.patrocles.org/Patrocles.htm>.
- mirBase*. <http://www.mirbase.org/>.
- Halvorsen M, Martin JS, Broadaway S, Laederach A: **Disease-associated mutations that alter the RNA structural ensemble.** *PLoS Genet* 2010, **6**(8):e1001074.
- Burton ZF, Killeen M, Sopta M, Ortolan LG, Greenblatt J: **RAP30/74: a general initiation factor that binds to RNA polymerase II.** *Mol Cell Biol* 1988, **8**(4):1602–1613.
- Sopta M, Burton ZF, Greenblatt J: **Structure and associated DNA-helicase activity of a general transcription initiation factor that binds to RNA polymerase II.** *Nature* 1989, **341**(6241):410–414.
- Killeen MT, Greenblatt JF: **The general transcription factor RAP30 binds to RNA polymerase II and prevents it from binding nonspecifically to DNA.** *Mol Cell Biol* 1992, **12**(1):30–37.
- Tan S, Aso T, Conaway RC, Conaway JW: **Roles for both the RAP30 and RAP74 subunits of transcription factor IIF in transcription initiation and elongation by RNA polymerase II.** *J Biol Chem* 1994, **269**(41):25684–25691.
- Flores O, Maldonado E, Burton Z, Greenblatt J, Reinberg D: **Factors involved in specific transcription by mammalian RNA polymerase II. RNA polymerase II-associating protein 30 is an essential component of transcription factor IIF.** *J Biol Chem* 1988, **263**(22):10812–10816.
- Olsen HG, Hayes BJ, Kent MP, Nome T, Svendsen M, Lien S: **A genome wide association study for QTL affecting direct and maternal effects of stillbirth and dystocia in cattle.** *Anim Genet* 2010, **41**(3):273–280.
- Huang W, Kirkpatrick BW, Rosa GJ, Khatib H: **A genome-wide association study using selective DNA pooling identifies candidate markers for fertility in Holstein cattle.** *Anim Genet* 2010, **41**(6):570–578.
- Sahana G, Guldbandsen B, Lund MS: **Genome-wide association study for calving traits in Danish and Swedish Holstein cattle.** *J Dairy Sci* 2011, **94**(1):479–486.
- Sahana G, Guldbandsen B, Bendixen C, Lund MS: **Genome-wide association mapping for female fertility traits in Danish and Swedish Holstein cattle.** *Anim Genet* 2010, **41**(6):579–588.
- Olsen HG, Hayes BJ, Kent MP, Nome T, Svendsen M, Larsgard AG, Lien S: **Genome-wide association mapping in Norwegian Red cattle identifies quantitative trait loci for fertility and milk production on BTA12.** *Anim Genet* 2011, **42**(5):466–474.
- Fortes MR, Li Y, Collis E, Zhang Y, Hawken RJ: **The IGF1 pathway genes and their association with age of puberty in cattle.** *Anim Genet* 2013, **44**(1):91–95.
- Ibi T, Hirooka H, Kahi AK, Sasaie Y, Sasaki Y: **Genotype x environment interaction effects on carcass traits in Japanese Black cattle.** *J Anim Sci* 2005, **83**(7):1503–1510.

31. Ibi T, Kahi AK, Hirooka H: **Effect of carcass price fluctuations on genetic and economic evaluation of carcass traits in Japanese Black cattle.** *J Anim Sci* 2006, **84**(12):3204–3211.
32. Boldman KG, Kriese LA, Van Vleck LD, Kachman SD: *A Manual for Use of MTDFREML. A Set of Programs to Obtain Estimates of Variances and Covariances [Draft]*. Washington, DC: USDA-ARS; 1993.
33. *Center for Bioinformatics and Computational Biology at University of Maryland.* http://www.cbcb.umd.edu/research/bos_taurus_assembly.shtml.
34. Purcell S, Neale B, Todd-Brown K, Thomas L, Ferreira MA, Bender D, Maller J, Sklar P, de Bakker PI, Daly MJ, et al: **PLINK: a tool set for whole-genome association and population-based linkage analyses.** *Am J Hum Genet* 2007, **81**(3):559–575.
35. Barrett JC, Fry B, Maller J, Daly MJ: **Haploview: analysis and visualization of LD and haplotype maps.** *Bioinformatics* 2005, **21**(2):263–265.
36. Scheet P, Stephens M: **A fast and flexible statistical model for large-scale population genotype data: applications to inferring missing genotypes and haplotypic phase.** *Am J Hum Genet* 2006, **78**(4):629–644.
37. Browning SR, Browning BL: **Rapid and accurate haplotype phasing and missing-data inference for whole-genome association studies by use of localized haplotype clustering.** *Am J Hum Genet* 2007, **81**(5):1084–1097.
38. Browning BL, Browning SR: **A unified approach to genotype imputation and haplotype-phase inference for large data sets of trios and unrelated individuals.** *Am J Hum Genet* 2009, **84**(2):210–223.
39. *CalcMatch.* <http://www.sph.umich.edu/csg/yli/software.html>.
40. Falconer DS, Mackay TFC: *Introduction to quantitative genetics*. 4th edition. Essex, UK: Longman Group Ltd; 1996.

doi:10.1186/1471-2156-14-41

Cite this article as: Sasaki et al.: Variants in the 3' UTR of *General Transcription Factor IIF, polypeptide 2* affect female calving efficiency in Japanese Black cattle. *BMC Genetics* 2013 **14**:41.

Submit your next manuscript to BioMed Central and take full advantage of:

- Convenient online submission
- Thorough peer review
- No space constraints or color figure charges
- Immediate publication on acceptance
- Inclusion in PubMed, CAS, Scopus and Google Scholar
- Research which is freely available for redistribution

Submit your manuscript at
www.biomedcentral.com/submit

