

# Multiple copies of BCR-ABL fusion gene on two isodicentric Philadelphia chromosomes in an imatinib mesylate-resistant chronic myeloid leukemia patient

WALID AL-ACHKAR<sup>1</sup>, ABDULSAMAD WAFI<sup>1</sup>, FATEN MOASSASS<sup>1</sup>, ELISABETH KLEIN<sup>2</sup> and THOMAS LIEHR<sup>2</sup>

<sup>1</sup>Department of Molecular Biology and Biotechnology, Human Genetics Division, Atomic Energy Commission, Damascus, Syria; <sup>2</sup>Jena University Hospital, Friedrich Schiller University, Institute of Human Genetics, D-07743 Jena, Germany

Received December 4, 2011; Accepted June 12, 2012

DOI: 10.3892/ol.2013.1225

**Abstract.** The so-called Philadelphia (Ph) chromosome is present in more than 90% of chronic myeloid leukemia (CML) cases. Amplification or duplication of the BCR-ABL gene has been found to be one of the key factors leading to drug resistance to imatinib mesylate (IM). In the present study, we identified the presence of isodicentric Ph chromosomes [idic(Ph)] in an IM-resistant patient. Fluorescence *in situ* hybridization (FISH) analysis on metaphase chromosomes confirmed the heterogeneity and amplification of the fused BCR-ABL gene. FISH analysis superimposed on G-banding confirmed the presence of idic(Ph) chromosomes. Reverse transcription-polymerase chain reaction (RT-PCR) products revealed the presence of the BCR-ABL fusion transcript b3a2. The idic(Ph) chromosomes in CML were shown to be fused at the satellite regions of the short arms. The patient did not respond to IM chemotherapy and did not achieve remission. In this study, the impact of the idic(Ph) chromosomes on genomic instability, heterogeneity and amplification of the BCR-ABL gene in IM-resistant patients is discussed.

## Introduction

Chronic myeloid leukemia (CML) is an acquired myeloproliferative disorder that originates in an abnormal pluripotent bone marrow stem cell and is consistently associated with the presence of the Philadelphia (Ph) chromosome, usually leading to a BCR-ABL gene fusion. The Ph chromosome is the result of a balanced t(9;22)(q34;q11) translocation, and is observed in more than 90% of CML cases, with variant Ph translocations

being observed in the remainder (1). The BCR-ABL fusion gene is formed by the transposition of the 3' portion of the ABL oncogene from 9q34 to the 5' portion of the BCR gene on chromosome 22, and this fusion gene encodes a constitutively active tyrosine kinase (2).

The progression of CML from the chronic phase (CP) to blast crisis (BC) is frequently associated with non-random secondary chromosomal aberrations, including +8, i(17q), +19 and an extra Ph chromosome (3).

The isodicentric Ph chromosome [idic(Ph)] is a rare cytogenetic aberration formed by the duplication and fusion of two identical Ph chromosomes with retention of their centromeres. Idic(Ph) chromosomes have been previously observed in CML patients (4-10).

Targeted therapy has been realized with imatinib mesylate (IM) (Glivec, formerly STI571), which forms a complex with the ABL part of the fused gene and inactivates it (11). IM is a highly effective therapy that has demonstrated a complete cytogenetic response in 87% of patients with newly-diagnosed CP CML (12). A complete hematological response with IM therapy has been observed in 95% of patients with CP CML following failure of interferon- $\alpha$ , 71% of accelerated phase (AP) patients and 31% of patients in myeloid blast crisis (BC) (13-15).

Resistance to chemotherapy occurs as a result of increased expression of the BCR-ABL kinase from genomic amplification, clonal chromosomal evolution, or mutations in the ABL kinase of the BCR-ABL gene affecting drug interaction or kinase activity (16).

In the present study, we describe a rare case of isoderivative Ph chromosome [ider(22)]-positive CML, which was further characterized by fluorescence *in situ* hybridization (FISH) and reverse transcription-polymerase chain reaction (RT-PCR). The patient did not respond to IM chemotherapy.

## Materials and methods

**Case report.** A 33-year-old male was diagnosed as suffering from CP CML. In May 2010, the white blood cell (WBC) count of the patient was  $25.5 \times 10^9/l$ , consisting of 78.5% neutrophils, 16.8% lymphocytes and 4.7% monocytes. The platelet count was  $432 \times 10^9/l$  and the hemoglobin level was 14.1 g/dl.

---

*Correspondence to:* Dr Walid Al-Achkar, Department of Molecular Biology and Biotechnology, Human Genetics Division, Atomic Energy Commission of Syria, P.O. Box 6091, Damascus, Syria  
E-mail: ascientific@aec.org.sy

**Key words:** chronic myeloid leukemia, isodicentric Philadelphia chromosomes, fluorescence *in situ* hybridization, imatinib mesylate

A previous physical examination revealed splenomegaly, loss of weight and fever. The patient was treated with IM at 400 mg/day for a total of 54 months, following which the previous relevant symptoms appeared to have improved. In July 2011, the patient presented for the second time with a WBC of  $14.6 \times 10^9/l$  consisting of 46.1% neutrophils, 27.7% lymphocytes, 22.2% monocytes, 0.9% eosinophiles and 3.1% basophiles. The platelet count was  $117 \times 10^9/l$  and the hemoglobin level was 13.3 g/dl. The serum lactate dehydrogenase (LDH) level was 613 U/l (normal level up to 414 U/l) and the serum alkaline phosphatase level was 83 U/l (normal level up to 128 U/l). The patient was treated with IM at 800 mg/day for a total of 6 months. The patient had a brother diagnosed with CML in 1994 who succumbed following 6 months of chemotherapy.

**Cytogenetic analysis.** Chromosome analysis using GTG-banding was performed according to standard procedure (17). A total of 20 metaphase cells derived from the unstimulated bone marrow of the patient were analyzed. Karyotypes were described according to the international system for human cytogenetic nomenclature (18).

**Molecular cytogenetics.** FISH using a LSI BCR-ABL dual-color dual-fusion translocation probe (Abbott Molecular/Vysis, Des Plaines, IL, USA) was performed according to the manufacturer's instructions (17). Furthermore, a probe specific to all acrocentric short chromosome arms (midi54) was applied as previously reported (19). A total of 20 metaphase spreads were analyzed using a fluorescence microscope (AxioImager.Z1 mot, Zeiss, Hertfordshire, UK) equipped with appropriate filter sets to discriminate between a maximum of five fluorochromes and the counterstain DAPI. Image capturing and processing were carried out using an ISIS imaging system (MetaSystems, Altlusheim, Germany).

**Immunohistochemistry.** The immunohistochemical tests were performed on Carnoy fixed cell suspension as previously described (20). A rabbit polyclonal to CENP-B antibody (Abcam, Cambridge, UK) was used to stain all centromeres. The specific staining of the active centromeres was performed with the anti-CENP-C antibody. FITC-labeled goat anti-rabbit IgG and CyTM3-conjugated AffiniPure goat anti-guinea pig IgG (Dianova, Hamburg, Germany) were applied as secondary antibodies.

**Reverse transcription-polymerase chain reaction (RT-PCR) for BCR-ABL fusion transcripts.** RT-PCR was carried out as previously described (21).

## Results

Karyotyping was performed following the chemotherapy treatment, revealing the following karyotypic changes. A complex karyotype  $47,XY,t(9;22),-22,+der(22)x2[13]/46,XY,t(9;22)[7]$  was determined by GTG-banding (Fig. 1) and was further specified by molecular cytogenetic studies (Fig. 2A and B). Dual-color FISH using a probe specific to BCR and ABL revealed that two atypical Ph chromosomes with four BCR-ABL fusion genes were present, i.e., there were two

isoderivative chromosome 22 [ider(22)] and the final karyotype obtained was:  $47,XY,der(9)t(9;22)(q34.13;q11.23),-22+der(22)(9qter->9q34.13::22q11.23->22p12~13::22p12~13->22q11.23::9q34.13->9qter)x2[13]/46,XY,t(9;22)(q34;q11)[7]$ .

RT-PCR analysis of the fusion transcript revealed a band corresponding to the b3a2 transcript (data not shown).

Immunohistochemistry revealed that the two centromeres on ider(22) were active (Fig. 2C).

## Discussion

According to the literature, reports of idic(Ph) chromosomes in CML have been infrequent, with most of them formed as a result of a fusion in the short arm of chromosome 22. From a cytogenetic viewpoint, idic(Ph) chromosomes formed by fusion at band q11 have rarely been observed, and have been reported in CML (4-9) and in acute lymphoblastic leukemia (ALL) (10).

Idic(Ph) chromosomes appear to be created by fusion or translocation of double Ph chromosomes (6). Furthermore, in certain cases of CML, idic(Ph) chromosomes are also duplicated, and double or triple idic(Ph) chromosomes are found (4,6,7). The formation of idic(Ph) chromosomes may play a crucial role in the amplification and heterogeneity of the BCR-ABL gene, leading to resistance to IM therapy in CML patients (8). However, the resistance can be primary or secondary (following an initial response). The two types of resistance occur most frequently in the BC phase of CML (7). Multiple mechanisms of resistance to IM have been described (10).

Cytogenetic studies often provide evidence of the progression of disease at an earlier phase than hematological markers. It is known that the expression of BCR-ABL is elevated in progenitor cells in the BC phase, compared to the CP phase of CML (22). While the findings involving the peripheral blood and bone marrow of the patient were suggestive of CP CML, given the presence of multiple copies of the idic(Ph) chromosome, it was possible that cytogenetics indicated the progression of the disease towards an accelerated phase. Despite the absence of mutations in the drug-binding site, the presence of multiple copies of the BCR-ABL oncogene is indicative of a poor prognosis and higher possibility of resistance to drug treatment (23).

The causative factor in the formation of isodicentric chromosomes is unknown. Isodicentric chromosomes may lead to breakage and reunion cycles during mitosis, potentially forming ring chromosomes and thus leading to genomic instability and heterogeneity in the cell population. Furthermore, these isodicentric chromosomes may be heterogeneous in copy number, leading to the amplification and duplication of the hybrid BCR-ABL genes on the idic(Ph) chromosome. Gene amplification and genomic heterogeneity are known to be associated with drug resistance (6,24). To the best of our knowledge, no acquired dicentric chromosome has yet been studied for its centromeric activity. Notably, in the two ider(22) both centromeres were active. According to previous studies on inborn dicentrics the two centromeres are active if a distance between approximately 1.4 and 13 Mb is present; in case of distances larger than 15 Mb one centromere becomes inactive (20).

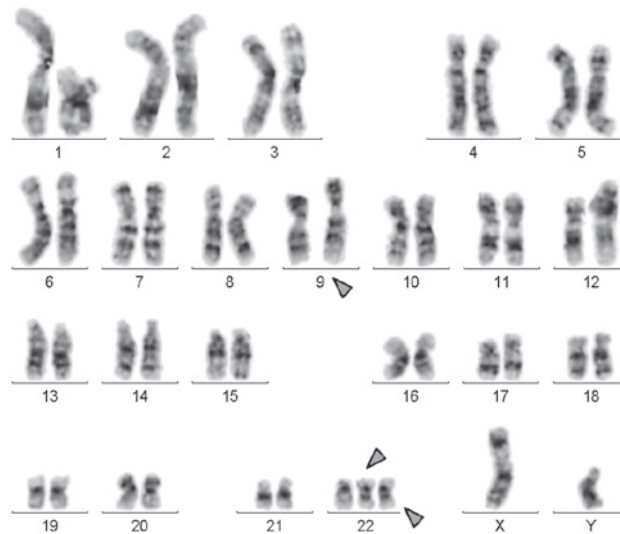


Figure 1. GTG-banding revealed a karyotype 47,XY,t(9;22),-22,+der(22)x2[13]/46,XY,t(9;22)[7] involving one further chromosome in addition to chromosomes 9 and 22. Derivative chromosomes are indicated by the arrowheads.

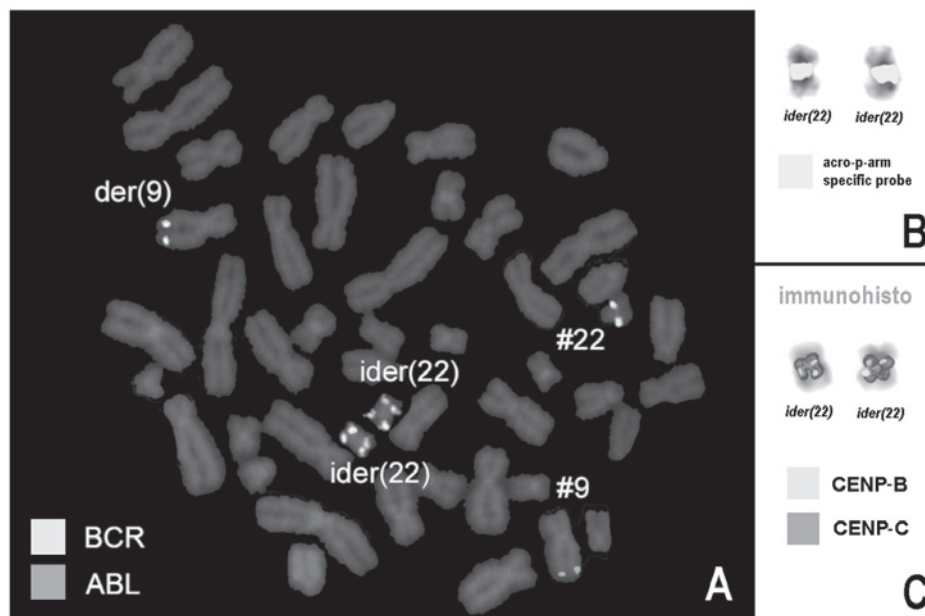


Figure 2. (A) Fluorescence *in situ* hybridization (FISH) using probes for BCR (green) and ABL (red) revealed 5 copies of BCR-ABL on the ider(22) chromosome in this case. (B) Using a probe for all acrocentric short arms, the breakpoints of ider(22) were shown to be located in the short arms. (C) Using immunohistochemistry, the dicentric character of the ider(22)s was proven. The CENP-B antibody stains all centromeres apart from that of the Y-chromosome, while the CENP-C antibody stains only active centromeres. Thus, it was also proven that the two centromeres were active on the ider(22). #, chromosome; der, derivative chromosome; ider, isoderivative chromosome.

The problem of gene amplification and genomic instability may be overcome by administering higher doses of IM to patients who develop this subcategory of IM resistance (8). However, if IM is evident in the etiology of the chromosomal breakpoints, inducing non-random breakpoints at the subtelomere or telomere region of the Philadelphia chromosomes, alternative therapies should be investigated. The elucidation of these specific disease mechanisms may assist in yielding additional therapies, possibly to be co-administered with IM (8).

In conclusion, we reported a rare case of isoderivative Ph chromosome-positive CML in AP, which was further characterized by FISH and RT-PCR. The patient did not respond to IM chemotherapy.

#### Acknowledgements

We thank Professor I. Othman, Director General of the Atomic Energy Commission of Syria (AECS) and Dr. N. Mirali, Head of the Molecular Biology and Biotechnology Department for

their support. This study was supported by the AECS and in parts by the Stefan-Morsch-Stiftung, Monika-Kutzner-Stiftung and the DAAD (D/07/09624).

## References

- O'Brien S, Thall PF and Siciliano MJ: Cytogenetics of chronic myelogenous leukaemia. *Baillieres Clin Hematol* 10: 259-276, 1997.
- Shtivelman E, Lifshitz B, Gale RP and Canaani E: Fused transcript of *abl* and *bcr* genes in chronic myelogenous leukemia. *Nature* 315: 550-554, 1985.
- Anastasi J, Feng J, Le Beau MM, Larson RA, Rowley JD and Vardiman JW: The relationship between secondary chromosomal abnormalities and blast transformation in chronic myelogenous leukemia. *Leukemia* 9: 628-633, 1995.
- Whang-Peng J, Knutsen TA and Lee EC: Dicentric Ph1 chromosome. *J Natl Cancer Inst* 51: 2009-2012, 1973.
- Becher R, Ohl S, Schaefer UW, Wendehorst E, Quiskamp F, Mahmoud HK, Schüning F and Schmidt CG: Clonal evolution with isodicentric Ph1 chromosome in Ph1-positive CML: karyotypic conversion after bone marrow transplantation. *Blut* 48: 247-250, 1984.
- Kovacs G, Georgii A and Mainzer K: Three isodicentric Philadelphia chromosomes in acute phase of chronic myeloid leukemia: a case report. *Cancer Genet Cytogenet* 20: 29-33, 1986.
- Pernice F, Squadrito G, Saitta A, Mazza G and Musolino C: Isodicentric Philadelphia chromosome in accelerated phase of chronic myeloid leukemia. *Cancer Genet Cytogenet* 66: 113-116, 1993.
- Szych CM, Liesveld JL, Iqbal MA, Li L, Siebert S, Asmus C, O'Malley J, Lee A and Wang N: Isodicentric Philadelphia chromosomes in imatinib mesylate (Gleevec)-resistant patients. *Cancer Genet Cytogenet* 174: 132-137, 2007.
- Li Ming Chua C, Tan YY, Chua SP, Ma HB, Koay E, Li Min Poon M, Liu TC and Gole L: Multiple copies of a rare rearrangement of Philadelphia chromosome in a chronic myeloid leukemia patient: a case report. *Cancer Genet Cytogenet* 199: 66-68, 2010.
- Yamamoto K, Nagata K, Morita Y, Inagaki K and Hamaguchi H: Isodicentric Philadelphia chromosome in acute lymphoblastic leukemia with *der(7;12)(q10;q10)*. *Leuk Res* 31: 713-718, 2007.
- Gambacorti-Passerini CB, Gunby RH, Piazza R, Galiotta A, Rostagno R and Scapozza L: Molecular mechanisms of resistance to imatinib in Philadelphia-chromosome-positive leukaemias. *Lancet Oncol* 4: 75-85, 2003.
- O'Brien SG, Guilhot F, Larson RA, Gathmann I, Baccarani M, Cervantes F, Cornelissen JJ, Fischer T, Hochhaus A, Hughes T, Lechner K, Nielsen JL, Rouselot P, Reiffers J, Saglio G, Shepherd J, Simonsson B, Gratwohl A, Goldman JM, Kantarjian H, Taylor K, Verhoef G, Bolton AE, Capdeville R, Druker BJ; IRIS Investigators: Imatinib compared with interferon and low-dose cytarabine for newly diagnosed chronic-phase chronic myeloid leukemia. *N Engl J Med* 348: 994-1004, 2003.
- Kantarjian H, Sawyers C, Hochhaus A, Guilhot F, Schiffer C, Gambacorti-Passerini C, Niederwieser D, Resta D, Capdeville R, Zoellner U, Talpaz M and Druker B: Hematologic and cytogenetic responses to imatinib mesylate in chronic myelogenous leukemia. *N Engl J Med* 346: 645-652, 2002.
- Talpaz M, Silver RT, Druker BJ, Goldman JM, Gambacorti-Passerini C, Guilhot F, Schiffer CA, Fischer T, Deininger MWN, Lennard AL, *et al*: Imatinib induces durable hematologic and cytogenetic responses in patients with accelerated phase chronic phase chronic myeloid leukemia: results of a phase 2 study. *Blood* 99: 1928-1937, 2002.
- Sawyers CL, Hochhaus A, Feldman E, Goldman JM, Miller CB, Ottmann OG, Schiffer CA, Talpaz M, Guilhot F, Deininger MWN *et al*: Imatinib induces hematologic and cytogenetic responses in patients with chronic myelogenous leukemia in myeloid blast crisis: results of a phase II study. *Blood* 99: 3530-3539, 2002.
- Hochhaus A, Kreil S, Corbin AS, La Rosée P, Müller MC, Lahaye T, Hanfstein B, Schoch C, Cross NCP, Berger U, Gschaidmeier H, Druker BJ and Hehlmann R: Molecular and chromosomal mechanisms of resistance to imatinib (STI571) therapy. *Leukemia* 16: 2190-2196, 2002.
- Al-Achkar W, Wafa A and Nweder MS: A complex translocation *t(5;9;22)* in Philadelphia cells involving the short arm of chromosome 5 in a case of chronic myelogenous leukemia. *J Exp Clin Cancer Res* 26: 411-415, 2007.
- Shaffer L, Slovak M and Campbell L (eds): *ISCN (2009): An International System for Human Cytogenetic Nomenclature*. S. Karger, Basel, 2009.
- Trifonov V, Seidel J, Starke H, Martina P, Beensen V, Ziegler M, Hartmann I, Heller A, Nietzel A, Claussen U and Liehr T: Enlarged chromosome 13 p-arm hiding a cryptic partial trisomy 6p22.2-pter. *Prenat Diagn* 23: 427-430, 2003.
- Ewers E, Yoda K, Hamid AB, Weise A, Manvelyan M and Liehr T: Entomere activity in dicentric small supernumerary marker chromosomes. *Chromosome Res* 18: 555-562, 2010.
- Al-Achkar W, Wafa A, Ali BY, Manvelyan M and Liehr T: A rare chronic myeloid leukemia case with Philadelphia chromosome, *BCR-ABL e13a3* transcript and complex translocation involving four different chromosomes. *Oncol Lett* 1: 797-800, 2010.
- Barnes DJ, Palaiologou D, Panousopoulou E, Schultheis B, Yong AS, Wong A, Pattacini L, Goldman JM and Melo JV: *Bcr-Abl* expression levels determine the rate of development of resistance to imatinib mesylate in chronic myeloid leukemia. *Cancer Res* 65: 8912-8919, 2005.
- Le Coutre P, Tassi E, Varella-Garcia M, Barni R, Mologni L, Cabrita G, Marchesi E, Supino R and Gambacorti-Passerini C: Induction of resistance to the Abelson inhibitor STI571 in human leukemic cells through gene amplification. *Blood* 95: 1758-1766, 2000.
- Campbell LJ, Patsouris C, Rayeroux KC, Somana K, Januszewicz EH and Szer J: *BCR/ABL* amplification in chronic myelocytic leukemia blast crisis following imatinib mesylate administration. *Cancer Genet Cytogenet* 139: 30-33, 2002.