

RESEARCH

Open Access

Predictive impact of polymorphism of PNPLA3 on HCC development after interferon therapy in Japanese patients with chronic hepatitis C

Yuki Moritou¹, Fusao Ikeda^{1,2*}, Yoshiaki Iwasaki³, Nobuyuki Baba⁴, Kouichi Takaguchi⁴, Tomonori Senoh⁴, Takuya Nagano⁴, Yasuto Takeuchi¹, Tetsuya Yasunaka¹, Hideki Ohnishi^{1,2}, Yasuhiro Miyake¹, Akinobu Takaki¹, Kazuhiro Nouse^{1,2} and Kazuhide Yamamoto^{1,2}

Abstract

The impact of single-nucleotide polymorphisms (SNP) of patatin-like phospholipase domain-containing protein 3 (PNPLA3) on development of hepatocellular carcinoma (HCC) is not clarified for Japanese patients with chronic hepatitis C. The present study investigated the associations of rs738409 PNPLA3 with HCC development after the antiviral therapy with peg-interferon and ribavirin for Japanese patients with hepatitis C virus serotype 1 and high viral load. Of the 271 patients enrolled in the study, 20 patients developed HCC, during a median follow-up period of 4.6 years. Multivariate analysis in the proportional hazards models revealed that sex, body mass index, platelet counts, and alpha feroprotein (AFP) had significant associations with HCC development ($p = 0.011, 0.029, 0.0002$, and 0.046 , respectively). Multivariate regression analysis revealed that PNPLA3 148 M was significantly associated with serum AFP level ($p = 0.032$), other than body mass index, platelet count, and alanine aminotransferase ($p = 0.0006, 0.0002$, and 0.037 , respectively), and that serum AFP level was significantly associated with PNPLA3 148 M ($p = 0.017$). Serum AFP level is an important factor in predicting HCC development after the antiviral therapy for Japanese patients with chronic hepatitis C, the mechanism of which might involve its significant associations with the SNP genotype of PNPLA3.

Keywords: PNPLA3, Interferon, HCC, HCV

Introduction

Hepatitis C virus (HCV) infection causes chronic hepatitis, and may progress to liver cirrhosis and hepatocellular carcinoma (HCC). More than 170 million people worldwide are infected with HCV, creating a serious global health problem (Kato 2001). Combination therapy with pegylated interferon alpha and ribavirin has a sustained virological response (SVR) in 50% of patients with HCV genotype 1 (Firpi & Nelson 2007). Recent therapeutic regimens using direct-acting antiviral agents have improved the SVR up to 80% (Ghany et al. 2011a; Zeuzem et al. 2011; Kumada et al. 2012).

Recently, the single-nucleotide polymorphism (SNP) of rs738409 patatin-like phospholipase domain-containing protein 3 (PNPLA3) has been identified for its significant associations with liver steatosis and fibrosis in patients with fatty liver disease and alcoholic liver disease (Romeo et al. 2008; Valenti et al. 2010). As for patients with chronic hepatitis C, associations of this SNP genotype with liver steatosis, fibrosis, and the outcome of interferon therapy have also been suggested (Trépo et al. 2011; Valenti et al. 2011). These results were mostly obtained from the analyses of patients of European origins; however, analysis of Japanese patients could yield somehow different results. A recent genome-wide association study for Japanese patients with non-alcoholic fatty liver disease by Kawaguchi et al. revealed that the risk variant of PNPLA3 148 M is significantly associated with non-alcoholic steatohepatitis, but did not show significant differences in liver steatosis or fibrosis among the patients

* Correspondence: fikeda@md.okayama-u.ac.jp

¹Department of Gastroenterology and Hepatology, Okayama University Graduate School of Medicine, Dentistry and Pharmaceutical Sciences, 2-5-1, Shikata-cho, Okayama 700-8558, Japan

²Department of Molecular Hepatology, Okayama University Graduate School of Medicine, Dentistry and Pharmaceutical Sciences, Okayama, Japan

Full list of author information is available at the end of the article

with non-alcoholic fatty liver disease (Kawaguchi et al. 2012). Miyashita et al. studied the associations of the SNP genotype of PNPLA3 with liver fibrosis and inflammation for Japanese patients with chronic hepatitis C, without significant associations in the results (Miyashita et al. 2012). Takeuchi et al. reported that the SNP genotype of PNPLA3 might not affect HCC prognosis in Japanese patients with hepatitis B virus, HCV, or non-alcoholic fatty liver diseases (Takeuchi et al. 2013). Thus, it is possible that ethnic differences exist in the genetic background of the pathogenesis of chronic liver diseases.

Prediction or early detection of HCC development after antiviral therapy is increasingly needed because of recent improvement of antiviral therapy. The present study investigated the associations of the SNP genotype of PNPLA3 with HCC development after interferon therapy in Japanese patients with chronic hepatitis C, in order to clarify the predictive impact of the SNP genotype of PNPLA3 on HCC development in Japanese patients with chronic hepatitis C.

Methods

Patients

The present study enrolled 271 Japanese patients suffering from chronic hepatitis C with HCV serotype 1 and a high viral load 5.0 log IU/mL in real-time PCR. All patients received 48 weeks of antiviral therapy with standard doses of pegylated interferon alpha-2a (180 µg/week) or 2b (1.5 µg/body weight/week) with ribavirin (600-1000 mg/day) at either Okayama University Hospital or Kagawa Prefectural Central Hospital. The outcomes of the interferon therapy were evaluated, according to the practice guidelines by the American association for the study of liver diseases, and the Japan society of hepatology (Ghany et al. 2011b). Hepatocellular carcinoma was ruled out using dynamic computed tomography, magnetic resonance imaging or ultrasonography prior to the start of the interferon therapy. Heavy alcohol-drinking behavior was defined as daily alcohol intake >70 grams. Patients with hepatitis B virus co-infection, human immunodeficiency virus co-infection, or autoimmune liver disease were not included in the study. The study was performed in accordance with the Helsinki Declaration, and the protocols were approved by the ethics committees of the participating institutes. All patients provided informed consent before enrolment into the study.

Diagnosis of liver histology

Liver histology was evaluated for 219 patients prior to the start of the interferon therapy. Liver fibrosis stage and hepatitis activity grade were assigned for all patients by two pathologists according to the criteria of Desmet et al. (1994). The severity grade of hepatic steatosis was defined according to the criteria used by Valenti et al. (2011).

Genotyping of single nucleotide polymorphism

Genomic DNA was extracted from whole-blood samples by means of a QIAamp DNA Mini Kit according to the manufacturer's protocol (Qiagen, Tokyo, Japan). The SNPs of rs8099917 IL28B, and rs738409 PNPLA3 were genotyped using the TaqMan predesigned SNP genotyping assays, as recommended by the manufacturer (Applied Biosystems, Tokyo, Japan). The SNP genotypes of all the samples could be obtained with these systems.

Variations of the amino acid 70 of HCV core

For the 241 patients in the study, variations of the amino acid 70 of HCV core (arginine or glutamine) were determined with direct sequence method. The amplifications of HCV core in the serum were performed as previously reported (Ikeda et al. 2010), and direct sequencing was carried out by Big Dye termination cycle sequencing using an ABI Prism 310 genetic analyzer (Applied Biosystems, Foster City, CA).

Follow-up and HCC diagnosis

In accordance with the clinical practice manual from the Japan Society of Hepatology (Makuuchi et al. 2010), HCC diagnosis was done using ultrasonography, computed tomography, magnetic resonance imaging, hepatic angiography, and/or tumor biopsy, in combination with the detection of serum levels of alpha-fetoprotein (AFP), AFP-L3, and des gamma-carboxy prothrombin (DCP). Only the patients without HCC at 1 year or longer after interferon therapy were included in the study. This follow-up period was defined as the time between the cessation of interferon therapy and HCC diagnosis or the latest confirmation of survival.

Statistical analysis

Data are expressed as means ± standard deviations. Proportional hazards models were utilized to identify the factors associated with HCC development during the follow-up period after interferon therapy. The incidences of HCC development were also estimated using the Kaplan–Meier method and compared with the log-rank test. Factors associated with the SNP genotype of PNPLA3 and AFP were analyzed by stepwise logistic regression analysis. A value of $p < 0.05$ was considered significant. Statistical analysis was performed with JMP software (SAS Institute, Cary, NC).

Results

Patient characteristics of the patients enrolled in the study

The characteristics of patients enrolled in the study are shown in Table 1. Their average age was 57 years, and 131 patients (48%) were female. Interferon therapy resulted in sustained virological responses in 126 patients (46.5%), relapse in 77 patients, and null or partial

Table 1 Characteristics of the patients enrolled in the study

Patient characteristics	N = 271
Age (years)	57 ± 10 [†]
Sex (male/female)	140/131
Body mass index	24 ± 3 [†]
Liver fibrosis (Stage 1/2/3/4)	71/82/60/6
Hepatitis activity (Grade 1/2/3)	164/49/6
rs 8099917 of IL28B (TT/TG/GG)	198/72/1
rs 738409 of PNPLA3 (CC/CG/GG)	81/136/54
HCV core amino acids 70 (arginine/glutamine)	150/91
Alanine aminotransferase (IU/L)	66 ± 55 [†]
Platelet count (10000 /mm ³)	17 ± 6 [†]
Alpha fetoprotein (ng/mL)	11 ± 19 [†]
HOMA-IR	4.2 ± 8.4 [†]
Therapeutic outcome (SVR/relapse/NVR)	126/77/68

[†]: Mean ± standard deviation; PNPLA3, patatin-like phospholipase domain-containing protein 3; HOMA-IR, homeostasis model assessment insulin resistance; SVR, sustained virological response; NVR, null or partial virological response.

virological response (NVR) in 68 patients. During the follow-up after the interferon therapy (median period of 4.6 year), the development of HCC was observed in 20 patients (16%). The results of AFP-L3 prior to interferon therapy were undetectable or below the lower limit of quantification for all patients. Consistent with previous reports (Makuuchi et al. 2010; He et al. 2009; Nishiguchi et al. 2001), SVR contributed to lowering the risk of HCC development (Hazards ratio 0.13, $p = 0.0067$, Table 2),

while patients with NVR showed a high incidence of HCC (Hazards ratio 2.4, $p = 0.048$). The incidences of HCC development were compared among patient groups formed according to interferon therapy outcomes (Figure 1A). The NVR patients had much higher incidence of HCC development than the SVR or relapse patients ($p = 0.0055$, the log-rank test). The SVR and relapse patients had similar risks of HCC development during the first 2 years after interferon therapy, while relapse patients had increased risk thereafter.

Patient characteristics associated with HCC development after interferon therapy

We compared the patient characteristics related to HCC development in proportional hazards models (Table 2). Male gender, high body mass index (BMI), advanced liver fibrosis, low platelet counts, and high levels of AFP had significant associations with HCC development in univariate analysis (Hazards ratio 5.6, $p = 0.0062$, Hazards ratio 1.2, $p = 0.0086$, Hazards ratio 3.8, $p < 0.0001$, Hazards ratio 0.77, $p < 0.0001$, and Hazards ratio 1.1, $p = 0.0002$, respectively). The incidence of HCC development was significantly lower in the patients with PNPLA3 148 M than in those with PNPLA3 148I (Hazards ratio 0.4, $p = 0.043$). Liver steatosis and amino acid 70 of HCV core affected HCC development slightly (Hazards ratio 2.1, $p = 0.067$, and Hazards ratio 3.4, $p = 0.082$, respectively), while the SNP genotype of IL28B was not associated with the risk of HCC development (Hazards ratio 0.62, $p = 0.31$). Stepwise multivariate analysis revealed that male gender, high BMI, low platelet

Table 2 Proportional hazards model for the development of hepatocellular carcinoma

Factors	Univariate analysis		Multivariate analysis	
	Hazards ratio (range [†])	p	Hazards ratio (range [†])	p
Age (years)	1.0 (0.99-1.1)	0.12		
Sex (1: male)	5.6 (1.6-19)	0.0062	5.5 (1.5-21)	0.011
Body mass index	1.2 (1.0-1.3)	0.0086	1.2 (1.0-1.3)	0.029
Liver fibrosis	3.8 (1.9-7.3)	<0.0001		
Hepatitis activity	1.1 (0.44-2.6)	0.88		
Liver steatosis (>30%)	2.1 (0.95-4.8)	0.067		
rs 8099917 of IL28B (TT)	0.62 (0.25-1.6)	0.31		
rs 738409 of PNPLA3 (148 M)	0.40 (0.17-0.97)	0.043		
Amino acid 70 of HCV core (glutamine)	3.4 (0.86-14)	0.082		
Alanine aminotransferase (>40 IU/L)	1.2 (0.68-2.2)	0.51		
Platelet count (10 ⁴ /mm ³)	0.77 (0.69-0.87)	<0.0001	0.76 (0.66-0.88)	0.0002
Alpha fetoprotein (ng/mL)	1.1 (1.0-1.1)	0.0002	1.1 (1.0-1.1)	0.046
HOMA-IR	0.97 (0.79-1.2)	0.76		
Sustained virological response	0.13 (0.03-0.57)	0.0067		
Null or partial virological response	2.4 (1.0-5.9)	0.048		

[†]: 95% confidence interval; PNPLA3, patatin-like phospholipase domain-containing protein 3; HOMA-IR, homeostasis model assessment insulin resistance.

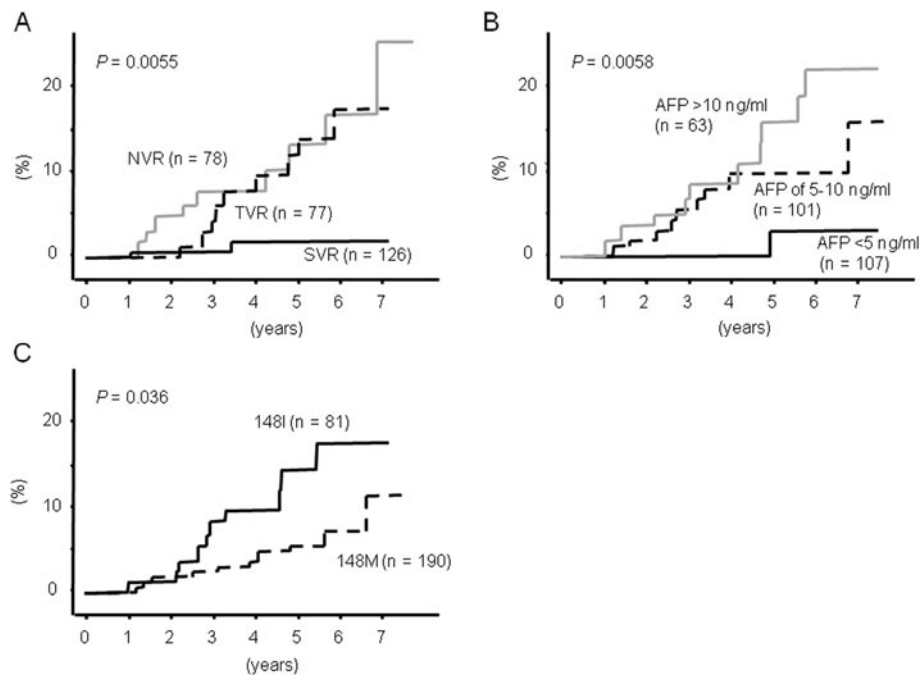


Figure 1 The incidence of HCC development after interferon therapy. The incidence of HCC development after interferon therapy was presumed by the Kaplan–Meier method for each group by dividing the patients by the outcomes of the interferon therapy (A), serum levels of alpha fetoproteins prior to the interferon therapy (B), and the SNP genotypes of PNPLA3 (C).

counts, and high levels of AFP had significant associations with HCC development (Hazards ratio 5.5, $p = 0.011$, Hazards ratio 1.2, $p = 0.029$, Hazards ratio 0.76, $p = 0.0002$, and Hazards ratio 1.1, $p = 0.046$, respectively).

PNPLA3 148 M is independently associated with low levels of AFP

Serum AFP levels prior to the interferon therapy were significantly associated with HCC development after interferon therapy ($p = 0.0058$, the log-rank test, Figure 1B). Especially, patients with AFP <5 ng/mL prior to interferon therapy showed significantly lower incidence of HCC development than those with AFP ≥ 5 ng/mL (Hazards ratio 0.09, $p = 0.021$). We further examined the patient characteristics prior to the interferon therapy regarding associations with serum AFP by stepwise logistic regression analysis (Table 3). The results showed several significant factors associated with serum AFP, such as BMI, platelet count, and alanine aminotransferase ($p = 0.0006$, 0.0002, and 0.037, respectively). The SNP genotype of PNPLA3 was also an independent factor associated with serum AFP ($p = 0.032$). Therefore, we studied the patient characteristics associated with the PNPLA3 148 M genotype (Table 4). Low levels of AFP >5 ng/mL were significantly associated with PNPLA3 148 M in stepwise multivariate logistic regression analysis ($p = 0.017$). Advanced liver fibrosis was also associated with PNPLA3 148 M in univariate analysis ($p = 0.028$), although this

association did not show statistical significance in multivariate analysis ($p = 0.20$).

Discussion

The impact of the SNP of PNPLA3 on interferon therapy and HCC development after interferon therapy is still undetermined for Japanese patients with chronic hepatitis C. The present study investigated the factors associated with HCC development after interferon therapy for Japanese patients with chronic hepatitis C, and is the first to clarify significant associations of the SNP of PNPLA3 with HCC development after interferon therapy.

The incidence of HCC development was significantly lower in the patients with PNPLA3 148 M than in those with PNPLA3 148 I (Table 2, and Figure 1C). Considering the roles of the SNP genotype of PNPLA3 with HCV-related HCC, a previous report by He et al. revealed impaired triglyceride hydrolysis in those with PNPLA3 148 M (He et al. 2009), which might work against direct regulation of HCV in hepatic lipid metabolism, and suppress HCC development. We explored clinical characteristics as they related to the SNP genotype of PNPLA3. In general, advanced liver fibrosis, high age, and male gender have been reported as risk factors of HCC development for patients with chronic hepatitis C (Nishiguchi et al. 2001; Imai et al. 1998; Yoshida et al. 1999). Liver steatosis, inflammation, insulin

Table 3 Stepwise logistic regression analysis of the factors related to alpha fetoprotein > 5 ng/mL

Factors	Univariate analysis		Multivariate analysis	
	Odds ratio (range [†])	p	Odds ratio (range [†])	p
Age (years)	1.0 (1.0-1.1)	0.0024	1.0 (1.0-1.1)	0.064
Sex (1: male)	0.95 (0.58-1.6)	0.84		
Body mass index	1.2 (1.1-1.3)	0.0005	1.2 (1.1-1.3)	0.0006
Liver fibrosis	2.8 (1.9-4.2)	<0.0001		
Hepatitis activity	1.1 (0.61-1.9)	0.83		
Liver steatosis (1: >30%)	1.8 (1.1-3.0)	0.026	1.3 (0.72-2.4)	0.37
rs 8099917 of IL28B (1: TT)	1.1 (0.65-2.0)	0.67		
rs738409 of PNPLA3 (1: 148 M)	0.36 (0.20-0.65)	0.0007	0.46 (0.22-0.93)	0.032
Amino acid 70 of HCV core (1: glutamine)	1.1 (0.58-2.2)	0.71		
Alanine aminotransferase (1: >40 IU/L)	2.3 (1.6-3.3)	<0.0001	1.6 (1.0-2.4)	0.037
Platelet count (1: >1.5x10 ⁵ /mm ³)	0.33 (0.22-0.50)	<0.0001	0.34 (0.19-0.60)	0.0002
HOMA-IR	1.0 (0.97-1.1)	0.33		

[†]: 95% confidence interval; PNPLA3, patatin-like phospholipase domain-containing protein 3; HOMA-IR, homeostasis model assessment insulin resistance.

resistance, and excessive body composition may accelerate HCC development. Among those factors, we could find none significantly associated with the SNP genotype of PNPLA3 as previously reported (Miyashita et al. 2012; Kotronen et al. 2009).

Serum AFP was only the factor we found to be significantly associated with the PNPLA3 genotype in the present study; patients with PNPLA3 148 M had lower levels of serum AFP than those with PNPLA3 148I. Meanwhile, multiple factors such as advanced liver fibrosis, inflammation, and body composition were significantly associated with serum AFP. Only the SNP genotype of PNPLA3 is the significant factor that is genetically determined. The associations of serum AFP with HCC development and the mechanisms by which the SNP genotypes of PNPLA3 contribute to serum AFP are still unknown, and need to be clarified in a future study.

Recent studies on Caucasian patients have shown that PNPLA3 148 M was significantly associated with liver steatosis (Poynard et al. 2003; Valenti et al. 2012; Clark et al. 2012), while the present study on Japanese patients showed no significant impact of the SNP genotype of PNPLA3 on liver steatosis for the patients with chronic hepatitis C. The high distribution of PNPLA3 148 M in Japanese patients might be associated with ethnic differences in the role of PNPLA3 in the pathogenesis of chronic liver disease; in the Hap Map study the prevalence of PNPLA3 148 M was found to be 43% in the Japanese, much higher than its prevalence in Caucasians (23%).

In conclusion, serum AFP level is an important factor in predicting HCC development after the antiviral therapy for Japanese patients with chronic hepatitis C, the mechanism of which might involve its significant associations with the SNP genotype of PNPLA3.

Table 4 Stepwise logistic regression analysis of the factors related to PNPLA3 148 M

Factors	Univariate analysis		Multivariate analysis	
	Odds ratio (range [†])	p	Odds ratio (range [†])	p
Age (years)	0.98 (0.95-1.0)	0.12		
Sex (1: male)	0.69 (0.41-1.2)	0.17		
Body mass index	1.0 (0.93-1.1)	0.73		
Liver fibrosis	0.68 (0.48-0.96)	0.028	0.78 (0.54-1.1)	0.20
Hepatitis activity	1.3 (0.70-2.3)	0.43		
Liver steatosis (1: >30%)	0.96 (0.55-1.7)	0.87		
Amino acid 70 of HCV core (1: glutamine)	0.80 (0.38-1.7)	0.56		
Alanine aminotransferase (1: >40 IU/L)	0.72 (0.51-1.0)	0.068		
Platelet count (1: >1.5x10 ⁵ /mm ³)	2.1 (0.93-4.7)	0.076		
Alpha fetoprotein (1: >5 ng/mL)	0.36 (0.20-0.65)	0.0007	0.42 (0.21-0.85)	0.017
HOMA-IR	0.18 (0.92-1.0)	0.18		

[†]: 95% confidence interval; PNPLA3, patatin-like phospholipase domain-containing protein 3; HOMA-IR, homeostasis model assessment insulin resistance.

Abbreviations

HCV: Hepatitis C virus; HCC: Hepatocellular carcinoma; SVR: Sustained virological response; SNP: Single-nucleotide polymorphisms; PNPLA3: Patatin-like phospholipase domain-containing protein 3; AFP: Alpha fetoprotein; DCP: Des gamma-carboxy prothrombin; NVR: Null or partial virological response; BMI: Body mass index.

Competing interests

The authors declare that no competing interests exist.

Authors' contributions

YM and FI designed the project, carried out research and drafted the manuscript. YW contributed to project design, and revised the drafted manuscript. NB, KT, TS, TN, YT, TY, HO, YM, AT, and KN contributed to data collections. KY contributed to project design. All authors read and approved the final manuscript.

Acknowledgements

This work was supported in part by the Research Program of Intractable Disease sponsored by the Ministry of Health, Labor, and Welfare of Japan, and by a Grant-in-Aid (22590733) for Scientific Research from the Ministry of Education, Culture, Sports, Science and Technology of Japan (to Y. I.). We thank Chizuru Mori for technical assistance and Toshie Ishi for valuable help in data collection.

Author details

¹Department of Gastroenterology and Hepatology, Okayama University Graduate School of Medicine, Dentistry and Pharmaceutical Sciences, 2-5-1, Shikata-cho, Okayama 700-8558, Japan. ²Department of Molecular Hepatology, Okayama University Graduate School of Medicine, Dentistry and Pharmaceutical Sciences, Okayama, Japan. ³Health and Environment Center, Okayama University, Okayama, Japan. ⁴Department of Internal Medicine, Kagawa Prefectural Central Hospital, Takamatsu, Japan.

Received: 19 April 2013 Accepted: 28 May 2013

Published: 1 June 2013

References

- Clark PJ, Thompson AJ, Zhu Q, Vock DM, Zhu M, Patel K, Harrison SA, Naggie S, Ge D, Tillmann HL, Urban TJ, Shianna K, Fellay J, Goodman Z, Novello S, Pedicone LD, Afdhal N, Sulkowski M, Albrecht JK, Goldstein DB, McHutchison JG, Muir AJ (2012) The association of genetic variants with hepatic steatosis in patients with genotype 1 chronic hepatitis C infection. *Dig Dis Sci* 57:2213–2221
- Desmet VJ, Gerber M, Hoofnagle JH, Manns M, Scheuer PJ (1994) Classification of chronic hepatitis: diagnosis, grading and staging. *Hepatology* 19:1513–1520
- Firpi RJ, Nelson DR (2007) Current and future hepatitis C therapies. *Arch Med Res* 38:678–690
- Ghany MG, Nelson DR, Strader DB, Thomas DL, Seeff LB, American Association for Study of Liver Diseases (2011a) An update on treatment of genotype 1 chronic hepatitis C virus infection: 2011 practice guideline by the American Association for the Study of Liver Diseases. *Hepatology* 54:1433–1444
- Ghany MG, Nelson DR, Strader DB, Thomas DL, Seeff LB, American Association for Study of Liver D (2011b) An update on treatment of genotype 1 chronic hepatitis C virus infection: 2011 practice guideline by the American Association for the Study of Liver Diseases. *Hepatology* 54:1433–1444
- He S, McPhaul C, Li JZ, Garuti R, Kinch LN, Grishin NV et al (2009) A sequence variation (I148M) in PNPLA3 associated with nonalcoholic fatty liver disease disrupts triglyceride hydrolysis. *J Biol Chem* 285:6706–6715
- Ikeda F, Dansako H, Nishimura G, Mori K, Kawai Y, Ariumi Y et al (2010) Amino acid substitutions of hepatitis C virus core protein are not associated with intracellular antiviral response to interferon- α in vitro. *Liver Int* 30:1324–1331
- Imai Y, Kawata S, Tamura S et al (1998) Relation of interferon therapy and hepatocellular carcinoma in patients with chronic hepatitis C. *Ann Intern Med* 129:94–99
- Kato N (2001) Molecular virology of hepatitis C virus. *Acta Med Okayama* 55:133–159
- Kawaguchi T, Sumida Y, Umemura A, Matsuo K, Takahashi M, Takamura T, Yasui K, Saibara T, Hashimoto E, Kawanaka M, Watanabe S, Kawata S, Imai Y, Kokubo M, Shima T, Park H, Tanaka H, Tajima K, Yamada R, Matsuda F, Okanoue T, Japan Study Group of Nonalcoholic Fatty Liver Disease (2012) Genetic polymorphisms of the human PNPLA3 gene are strongly associated with severity of non-alcoholic fatty liver disease in Japanese. *PLoS One* 7:e38322
- Kottronen A, Johansson LE, Johansson LM, Roos C, Westerbacka J, Hamsten A et al (2009) A common variant in PNPLA3, which encodes adiponutrin, is associated with liver fat content in humans. *Diabetologia* 52:1056–1060
- Kumada H, Toyota J, Okanoue T, Chayama K, Tsubouchi H, Hayashi N (2012) Telaprevir with peginterferon and ribavirin for treatment-naive patients chronically infected with HCV of genotype 1 in Japan. *J Hepatol* 56:78–84
- Makuuchi M, Kokudo N, Arii S (2010) Clinical practice guidelines for hepatocellular carcinoma - the Japan society of hepatology 2009 update. *Hepatol Res* 40:2–144
- Miyashita M, Ito T, Sakaki M, Kajiwara A, Nozawa H, Hiroishi K, Kobayashi M, Kumada H, Imawari M (2012) Genetic polymorphism in cyclooxygenase-2 promoter affects hepatic inflammation and fibrosis in patients with chronic hepatitis C. *J Viral Hepat* 19:608–614
- Nishiguchi S, Shiomi S, Nakatani S et al (2001) Prevention of hepatocellular carcinoma in patients with chronic active hepatitis C and cirrhosis. *Lancet* 357:196–197
- Poynard T, Ratziu V, McHutchison J, Manns M, Goodman Z, Zeuzem S, Younossi Z, Albrecht J (2003) Effect of treatment with peginterferon or interferon alfa-2b and ribavirin on steatosis in patients infected with hepatitis C. *Hepatology* 38:75–85
- Romeo S, Kozlitina J, Xing C, Pertsemlidis A, Cox D, Pennacchio LA, Boerwinkle E, Cohen JC, Hobbs HH (2008) Genetic variation in PNPLA3 confers susceptibility to nonalcoholic fatty liver disease. *Nat Genet* 40:1461–1465
- Takeuchi Y, Ikeda F, Moritou Y, Hagihara H, Yasunaka T, Kuwaki K, Miyake Y, Ohnishi H, Nakamura S, Shiraha H, Takaki A, Iwasaki Y, Nouse K, Yamamoto K (2013) The impact of patatin-like phospholipase domain-containing protein 3 polymorphism on hepatocellular carcinoma prognosis. *J Gastroenterol* 48:405–412
- Trépo E, Pradat P, Potthoff A, Momozawa Y, Quertinmont E, Gustot T, Lemmers A, Berthillon P, Amininejad L, Chevallier M, Schlué J, Kreipe H, Devière J, Manns M, Trépo C, Sninsky J, Wedemeyer H, Franchimont D, Moreno C (2011) Impact of patatin-like phospholipase-3 (rs738409 C > G) polymorphism on fibrosis progression and steatosis in chronic hepatitis C. *Hepatology* 54:60–69
- Valenti L, Alisi A, Galmozzi E, Bartuli A, Del Menico B, Alterio A, Dongiovanni P, Fargion S, Nobili V (2010) I148M patatin-like phospholipase domain-containing 3 gene variant and severity of pediatric nonalcoholic fatty liver disease. *Hepatology* 52:1274–1280
- Valenti L, Rumi M, Galmozzi E, Aghemo A, Del Menico B, De Nicola S, Dongiovanni P, Maggioni M, Fracanzani AL, Rametta R, Colombo M, Fargion S (2011) Patatin-like phospholipase domain-containing 3 I148M polymorphism, steatosis, and liver damage in chronic hepatitis C. *Hepatology* 53:791–799
- Valenti L, Aghemo A, Stättermayer AF, Maggioni P, De Nicola S, Motta BM, Rumi MG, Dongiovanni P, Ferenci P, Colombo M, Fargion S (2012) Implications of PNPLA3 polymorphism in chronic hepatitis C patients receiving peginterferon plus ribavirin. *Aliment Pharmacol Ther* 35:1434–1442
- Yoshida H, Shiratori Y, Moriyama M et al (1999) Interferon therapy reduces the risk for hepatocellular carcinoma: National surveillance program of cirrhotic and noncirrhotic patients with chronic hepatitis C. *Ann Intern Med* 131:174–181
- Zeuzem S, Andreone P, Pol S, Lawitz E, Diago M, Roberts S, Focaccia R, Younossi Z, Foster GR, Horban A, Ferenci P, Nevens F, Müllhaupt B, Pockros P, Terg R, Shouval D, van Hoek B, Weiland O, Van Heeswijk R, De Meyer S, Luo D, Boogaerts G, Polo R, Picchio G, Beumont M, REALIZE Study Team (2011) Telaprevir for retreatment of HCV infection. *N Engl J Med* 364:2417–2428

doi:10.1186/2193-1801-2-251

Cite this article as: Moritou et al.: Predictive impact of polymorphism of PNPLA3 on HCC development after interferon therapy in Japanese patients with chronic hepatitis C. *SpringerPlus* 2013 2:251.