



Published in final edited form as:

Nat Commun. 2013 ; 4: 1909. doi:10.1038/ncomms2916.

Sam68 modulates the promoter specificity of NF- κ B and mediates expression of CD25 in activated T cells

Kai Fu^{1,6}, Xin Sun^{1,6}, Wenxin Zheng^{1,6}, Eric M. Wier¹, Andrea Hodgson¹, Dat Q. Tran², Stéphane Richard^{3,4,5}, and Fengyi Wan¹

¹Department of Biochemistry and Molecular Biology, Bloomberg School of Public Health, Johns Hopkins University, Baltimore, MD 21025 USA

²Department of Pediatrics, University of Texas-Houston Medical School, Houston, TX 77030

³Terry Fox Molecular Oncology Group and the Bloomfield Center for Research on Aging, Lady Davis Institute for Medical Research, Sir Mortimer B. Davis Jewish General Hospital

⁴Department of Oncology, McGill University, Montréal, Québec, H3T1E2, Canada

⁵Department of Medicine, McGill University, Montréal, Québec, H3T1E2, Canada

Abstract

CD25, the alpha chain of the interleukin-2 receptor, is expressed in activated T cells and plays a significant role in autoimmune disease and tumorigenesis; however, the mechanisms regulating transcription of *CD25* remain elusive. Here we identify the Src-associated substrate during mitosis of 68kDa (Sam68) as a novel non-Rel component in the nuclear factor-kappaB (NF- κ B) complex that confers *CD25* transcription. Our results demonstrate that Sam68 plays an essential role in the induction and maintenance of CD25 in T cells. T cell receptor engagement triggers translocation of the inhibitor of NF- κ B kinase alpha (IKK α) from the cytoplasm to the nucleus, where it phosphorylates Sam68, causing complex formation with NF- κ B in the nucleus. These findings reveal the important roles of KH domain-containing components and their spatial interactions with IKKs in determining the binding targets of NF- κ B complexes, thus shedding novel insights into the regulatory specificity of NF- κ B.

Users may view, print, copy, download and text and data- mine the content in such documents, for the purposes of academic research, subject always to the full Conditions of use: http://www.nature.com/authors/editorial_policies/license.html#terms

Correspondence and requests for materials should be addressed to F.W. Department of Biochemistry and Molecular Biology, Bloomberg School of Public Health, Johns Hopkins University, 615 N. Wolfe Street, W8041, Baltimore, MD 21025 USA. Tel: 410-955-5848; FAX: 410-955-2926; fwan@jhsph.edu.

⁶These authors contributed equally to this work.

Author contributions

K.F., X.S., W.Z., E.M.W., A.H., and F.W. performed the experiments and analyzed the data. D.Q.T. and S.R. helped with critical reagents. F.W. oversaw the project, designed the experiments, and wrote the manuscript. K.F., X.S., and W.Z. contributed equally to this study. All authors discussed the results and commented on the manuscript.

Competing financial interests

The authors declare that they have no conflict of interest.

Introduction

CD25, the alpha chain of interleukin-2 receptor (IL-2R), is inducibly expressed and required for formation of the high affinity IL-2R. Elevated expression of CD25 has been detected in T cells in an array of autoimmune diseases, allograft rejection and lymphoid neoplasms ¹, and a large variety of cancers ². Moreover, soluble CD25 shed from the cell surface has been proposed as a prognostic indicator in cancer patients, with high plasma levels correlating with poor survival rates ². It is well known that the promoter in the *CD25* gene contains multiple DNA regulatory elements that bind to key transcription factors, in particular nuclear factor-kappaB (NF-κB) and nuclear factor of activated T-cells (NF-AT); however, the mechanism(s) governing the specific transcription of *CD25* in normal and tumor cells remains elusive.

Diverse stimuli can activate NF-κB and induce an ever-increasing list of target genes, which involve manifold biological activities ³⁻⁶. NF-κB binds 10 nucleotide cognate sites called κB sites that appear to be a minimal requirement for regulation, but insufficient for gene induction ^{7, 8}. It is still a long-standing question how NF-κB selectively recognizes a small subset of relevant κB sites from the large excess of potential binding sites ⁶. Furthermore, the molecular size and affinity of the native NF-κB complex are of greater magnitude than can be accounted for by reconstituted heterodimers of Rel proteins ^{9, 10}. Beyond the Rel components, we recently identified ribosomal protein S3 (RPS3) as an integral and functional component in NF-κB complexes ⁷. RPS3 appears to select particular genomic κB sites to be activated and preferentially directs high affinity binding to κB sites with certain sequence specificities, therefore serving as a “specifier” subunit of NF-κB ⁷. The identification of RPS3 suggested a new mechanism in which DNA binding activity could be regulated within NF-κB complexes by the synergistic interactions between Rel and non-Rel components ^{7, 8}. Moreover, the significance of RPS3-dependent specific NF-κB transcription has been highlighted in an increasing number of key pathophysiological processes ^{7, 11-18}. However, the full regulatory spectra of NF-κB cannot be fully explained by the inclusion of RPS3. There are conditions in which NF-κB accumulates in the nucleus while there is no CD25 expression, implying that NF-κB is necessary but not sufficient for CD25 induction ². In particular, *CD25* is among those NF-κB target genes whose transcription does not require RPS3 during T cell activation ⁷. Given its critical role in autoimmune diseases and diverse malignancies, deciphering the NF-κB-mediated specific transcription of *CD25* will better our understanding of the regulatory specificity of NF-κB and elucidate novel target molecules for pharmacological interventions.

Sam68 (Src-associated substrate during mitosis of 68 kDa) belongs to the heteronuclear ribonucleoprotein particle K (hnRNP K) homology (KH) domain family of RNA-binding proteins ^{19, 20}. Sam68 is versatile protein functioning in a variety of cellular processes, ranging from regulating RNA stability, RNA alternative splicing, adipogenesis, spermatogenesis, carcinogenesis, and others ¹⁹⁻²⁹. Emerging evidence suggests Sam68 functions as a signaling molecule in multiple signaling pathways ³⁰, in particular a recently-revealed role of Sam68 in both NF-κB activation and apoptosis initiated through the TNF receptor ³¹. However, it remains largely unknown whether Sam68, as a preferentially nuclear protein, plays an important role in signal transduction and gene regulation in the

nucleus, in spite of its emerging role in regulating transcriptional activity implicated by recent studies^{32–34}.

Here we identify Sam68 as a novel DNA binding component that is critical for NF- κ B to specifically recognize the *CD25* κ B site. T cell receptor (TCR) engagement triggered the inhibitor of NF- κ B kinase alpha (IKK α) translocate from the cytoplasm to the nucleus, where it phosphorylated Sam68. Phosphorylated Sam68 associated with nuclear translocated NF- κ B complexes, and facilitated binding to the *CD25* κ B site for full gene induction. Our results demonstrate there can be at least two biochemically distinct p65-p50 NF- κ B complexes in the nucleus of the same cells at the same time, reinforcing the notion that NF- κ B consists of both Rel and non-Rel subunits that actually comprise multiple protein complexes with different gene activation specificities.

Results

Recognition of *CD25* κ B DNA by NF- κ B does not depend on RPS3

We recently identified RPS3 as non-Rel component of NF- κ B that targets the NF- κ B DNA binding complex to certain κ B motifs⁷. To examine whether RPS3 is required for recruiting the NF- κ B complex to target genes during T cell activation, we performed chromatin immunoprecipitation (ChIP) to analyze the endogenous p65 recruitment to the promoters of known NF- κ B target genes *CD25*, *IL8*, and *NFKBIA*^{35–37}. Knockdown of RPS3 by small interfering RNAs (siRNA) remarkably attenuated the TCR stimulation-induced p65 recruitment to the κ B regions of *NFKBIA* and *IL8* promoters⁷ (Fig. 1a). The p65 enrichment was specific since there was negligible recruitment of p65 to the *ACTB* promoter that does not contain any κ B sites (Fig. 1a). By contrast, the transcription and the recruitment of p65 to the *CD25* κ B site was undiminished and perhaps even slightly augmented⁷ (Fig. 1a). Moreover, ablation of RPS3 specifically abolished the TCR stimulation-induced NF- κ B gel shift complex formed with *NFKBIA* κ B probe (Fig. 1b, compare lanes 2 and 4), without affecting the complex formed with *CD25* κ B probe (Fig. 1c, compare lanes 6 and 8). These data suggest that RPS3 is not required for NF- κ B to form a stable complex with *CD25* κ B DNA. We performed supershift assays and determined that both p65 and p50 exist in the *CD25* κ B DNA binding complex (Fig. 1c, lanes 10 and 11). Of note, the migration of the complexes formed with the *NFKBIA* κ B site and the *CD25* κ B site opens up the possibility that they have different biochemical compositions (Fig. 1b–c). Furthermore, heterodimers formed by recombinant p65 and p50 bind poorly, whereas the nuclear extracts from NF- κ B constitutively activated HUT102 lymphoma cells exhibit high-affinity to *CD25* κ B DNA (Fig. 1d, lanes 12 and 13). These data suggest that Rel components are not sufficient for the high affinity to *CD25* κ B DNA. Therefore, at least one other RPS3-like “specifier” component in the NF- κ B complex could confer the recognition of *CD25* κ B DNA.

Sam68 is associated with the *CD25* κ B DNA binding complex

To explore this possibility, we utilized the human T-lymphotropic virus type I (HTLV-I)-carrying T-cell lymphoma cell line HUT102, where the NF- κ B signaling and *CD25* expression are constitutively activated³⁸ (Fig. 1d, 2a). We hypothesized the NF- κ B complex binding to *CD25* κ B DNA could contain other KH domain proteins, as KH

domains can bind both proteins and nucleic acids and therefore can potentially serve as a platform facilitating protein/protein-protein/DNA interaction³⁹, and they have been illustrated as essential functional components of several transcriptional complexes⁴⁰. To evaluate this hypothesis, we immunoprecipitated p65 from nuclear extracts derived from HUT102 cells and screened the immunoprecipitate with antibodies against various KH domain proteins (Table 1). RPS3 was shown to interact strongly with p65 (Table 1), indicating the active transcription of some RPS3-dependent genes in HUT102 cells. In support of this notion, the *IL2* gene, whose transcription requires RPS3⁷, is consistently activated by NF- κ B in HUT102 cells³⁸. Interestingly, Sam68, another KH domain protein with remarkable nucleic acid binding capability^{41, 42}, exhibited strong interaction with p65 (Table 1, Fig. 2b). Moreover, the specific Sam68-p65 interaction was verified by a pull-down assay using GST-tagged Sam68 and HUT102 cell nuclear extracts (Supplementary Fig. S1).

To examine whether Sam68 is a protein component that determines the recognition of *CD25* κ B DNA by NF- κ B, we separated the nuclear extracts from HUT102 cells into sequential fractions. The *CD25* κ B DNA binding active fractions were collected for a subsequent DNA affinity purification to separate the potential binding protein(s) (Fig. 2c). Unexpectedly, the peaks of the *CD25* κ B DNA binding activities in the sequential nuclear fractions through gel filtration (Fig. 2d) did not coincide with the distribution peaks of neither p65 nor p50 in the fractions (Fig. 2e), suggesting that the p65 or p50 is not the limiting factor for NF- κ B to bind the *CD25* κ B site as long believed. In contrast, the distribution of Sam68 better approximated the *CD25* κ B DNA binding activities (Fig. 2e), which hints that Sam68 could be a prerequisite for NF- κ B recognizing the *CD25* κ B DNA. We then isolated the putative candidate(s) conferring NF- κ B binding specificity to the *CD25* κ B site by DNA affinity purification using the enriched active fractions (26 to 30 in Fig. 2d). Both p65 and Sam68 were enriched in the affinity eluate from biotin-labeled double-stranded DNA containing 5 copies of *CD25* κ B sites but not in the control DNA (Fig. 2f). RPS3 was not observed in the NF- κ B complex binding to the *CD25* κ B DNA (Fig. 2f), independently demonstrating that RPS3 is not required for NF- κ B binding to the *CD25* κ B site⁷, despite the fact that abundant RPS3 was in the nucleus and associated with p65 (Table 1). These results suggest that Sam68 could be an integral component of NF- κ B DNA binding complex to the *CD25* κ B site.

Sam68 is an integral component in the *CD25* NF- κ B complex

Provided that Sam68 preferentially localizes in the nucleus (Supplementary Fig. S2)¹⁹, we first performed chromatin immunoprecipitation (ChIP) assays to examine whether Sam68 could be recruited to the *CD25* promoter. We found precipitation of either p65 or Sam68, but not isotype control, gave almost identical signal for the 200–300 base-pair *CD25* promoter region containing κ B sites, in HUT102 cells (Fig. 3a). In contrast, neither Sam68 nor p65 gave a significant enrichment signal for the *ACTB* promoter that lacks κ B sites (Fig. 3a). These results suggest that Sam68 could be a component of the NF- κ B complex formed at the *CD25* κ B site, which validates, in intact nuclear chromatin, our biochemical observation that both Sam68 and p65 were co-enriched in the affinity purification eluate using *CD25* κ B DNA (Fig. 2f).

To determine whether Sam68 is incorporated into the NF- κ B DNA-binding complex, we utilized electrophoretic mobility shift assays (EMSAs) with nuclear extracts derived from either resting or stimulated Jurkat cells. PMA stimulation strongly induced formation of an NF- κ B band as probed by *CD25* κ B oligonucleotides (Fig. 3b, compare lane 2 and to lane 1). The specificity of the band was confirmed by cold oligonucleotide competition: *CD25* κ B oligonucleotides competed away, whereas OCT1 oligonucleotides did not diminish, the induced band (Supplementary Fig. S3). The addition of p65 antibody indicated that the induced band contains the NF- κ B p65 subunit (Fig. 3b, lane 3), consistent with previous reports⁷. More importantly, Sam68 antibody blocked the formation of *CD25* κ B DNA binding complexes, in a dose-dependent manner (Fig. 3b, lanes 4 and 5), verifying that endogenous Sam68 is an integral component for the NF- κ B complex that forms with the *CD25* κ B oligonucleotides. A similar result was obtained in nuclear extracts from HUT102 cells, where *CD25* is constitutively activated through NF- κ B (Fig. 3b, lanes 7–10). Of note, the distinct migration of PMA-induced *CD25* κ B DNA binding complex in Jurkat cells and constitutively activated *CD25* κ B DNA binding complex in HUT102 cells (Fig. 3b, compare lane 2 and to lane 7), suggests again that other component(s) beyond Rel subunits complex with the *CD25* κ B DNA and at least Sam68 is one of such protein(s).

The notion that Sam68 and p65 could be jointly recruited as an NF- κ B complex to the *CD25* κ B site was further supported by a structure-function study (Fig. 3c–e, Supplementary Fig. S4). Using various truncations of Sam68, we sought to understand the key domain(s) in Sam68 for its interaction with p65. We detected the association of full length, N, and C truncated Sam68 to p65, but not GFP vehicle (Fig. 3d). In contrast, deletion of the essential core of KH domain (a.a. 165–224) of Sam68 abolished the Sam68-p65 association (Fig. 3d). In a reverse immunoprecipitation, we obtained similar results (Fig. 3e), thus confirming the KH domain of Sam68 is required for p65 binding. The corresponding analysis of p65 revealed the Rel homolog domain (RHD, a.a. 1–311) was necessary, whereas neither the N-terminal portion nor the dimerization domain of p65 was sufficient for Sam68 binding (Supplementary Fig. S4). The RHD domain of p65 and the KH domain of Sam68 both possess nucleic acid binding capabilities, thus Sam68 could regulate the binding of NF- κ B complexes to *CD25* κ B DNA.

Sam68 is critical for *CD25* gene transcription

To evaluate the role of Sam68 in NF- κ B-mediated *CD25* gene transcription, we examined luciferase reporter genes in Jurkat cells following Sam68 knockdown. Corresponding to the knockdown efficiency (Fig. 4a), Sam68 silencing dramatically attenuated p65 overexpression-induced luciferase reporter expression driven by a *CD25* κ B promoter (Fig. 4b). By contrast, knockdown of Sam68 did not decrease the induced expression of a luciferase reporter driven by either the activator protein 1 (AP-1) or NF-AT promoter (Supplementary Fig. S5). Moreover, Sam68 knockdown remarkably attenuated the *CD25* mRNA levels in Jurkat cells stimulated with PMA plus ionomycin (PMA/I) (Fig. 4c) and HUT102 cells (Supplementary Fig. S6). Taken together, these data indicate a specific role of Sam68 in *CD25* transcription.

CD25, a transmembrane protein, is critical for hematologic cells to achieve a high affinity binding of IL-2 (ref 1). TCR engagement causes resting human T lymphocytes to transcriptionally upregulate several activation/proliferation mediators, in particular CD25 whose inducible expression depends on p65 but not RPS3 (ref 7). Interestingly, knockdown of either Sam68 or p65, compared to non-specific scramble siRNA oligonucleotides, retarded the PMA/I-or TCR engagement-induced CD25 induction in human T lymphocytes (Fig. 4d and Supplementary Fig. S7). Consequently, attenuated cell surface CD25 expression due to Sam68 or p65 knockdown impaired TCR-induced human T lymphocyte proliferation (Fig. 4d). We further examined whether Sam68 is required to maintain the elevated CD25 in lymphocytes by transfecting siRNAs into activated human CD4⁺CD25⁺ cells. As expected, nonspecific siRNA silenced cells still maintained high surface CD25 expression (Fig. 4e). In contrast, Sam68 knockdown markedly attenuated surface CD25 expression, to a similar extent as p65 knockdown⁷ (Fig. 4e). Together these results indicate that Sam68 is an important component of the CD25 NF-κB complex in both resting and activated T lymphocytes.

To assess the impact of Sam68 on the TCR engagement-induced NF-κB gene transcription, which is critical for lymphocyte activation and proliferation^{7, 43, 44}, we examined the effect of Sam68 knockdown on the induction of a subset of NF-κB genes in Jurkat cells. Compared to non-specific scramble siRNA transfected cells, Sam68 knockdown significantly attenuated the TCR stimulation-induced *CD25*, *BIRC3*, *NFKB2*, and *CD83* genes (Supplementary Fig. S8). In contrast, Sam68 knockdown augmented the *BIRC2* and *IL8* gene expression, and had no effect on the induction of *CCL1*, *USP12*, *NFKBIA*, and *TNFAIP3* genes (Supplementary Fig. S8). Analogous with RPS3, as we reported previously^{7, 8}, Sam68 appears to control transcription of a selective subset of NF-κB target genes, in line with the evidence that it was only detected in a fraction of NF-κB DNA binding complexes (Fig. 2e).

Sam68 does not function as an adaptor in TCR signaling

Containing several consensus domains to interact with SH3 domain-containing proteins and tyrosine kinases, Sam68 was proposed to function as an adaptor protein in lymphocyte activation signaling^{19, 34}. Moreover, Sam68 was recently shown to participate in the TNF signaling pathway³¹. We thus tested whether it functions as a signaling adaptor in TCR engagement-induced NF-κB signaling. We first verified that the Sam68 expression was not regulated during T cell activation (Fig. 5a and Supplementary Fig. S9). The CD3/CD28 antibodies and PMA/I-induced IκBα degradation in Jurkat cells with Sam68 knockdown was identical, if not more dramatic, to that in the cells transfected with nonspecific siRNA (Fig. 5a). Moreover, PMA/I-induced an identical portion of p65 translocation from the cytosol to the nucleus in the control and Sam68 knockdown Jurkat cells (Fig. 5b). We further verified this result by immunofluorescence staining of p65 in Jurkat cells (Fig. 5c), and our quantified results showed that PMA/I-triggered a significant p65 nuclear translocation in Sam68 knockdown cells, similar to the control cells (Fig. 5d). Together all these results demonstrate that Sam68 is not essential for the TCR engagement-initiated cytoplasmic signaling, which suggests that Sam68 most likely does not function as an adaptor molecule for TCR stimulation-induced NF-κB signaling.

Sam68 is phosphorylated by IKK α in the nucleus

Sam68 appeared to not be associated with p65 in resting Jurkat cells; however, they complexed in the nucleus upon stimulation (Supplementary Fig. S10), indicating an inducible interaction between Sam68 and p65 during T cell activation. To understand how Sam68 participates in the NF- κ B complex for *CD25* gene transcription, we explored the post-translational modulation(s) of Sam68 during TCR engagement-induced NF- κ B activation. Phosphorylation of Sam68 was previously shown to be critical for its nucleic acid binding activity^{19, 24}, which led us to examine Sam68 phosphorylation during NF- κ B activation. Our results revealed that Sam68 was phosphorylated at certain serine residue(s) in the nucleus following PMA/I stimulation (Fig. 6a). The IKK complex is an important group of serine/threonine kinases in NF- κ B activation, which mainly consists of a regulatory subunit IKK γ and two catalytic subunits, IKK α and IKK β ^{4, 5}. Among them, IKK β is almost an entirely cytoplasmic protein, whereas IKK α possesses a nuclear localization sequence (NLS)^{4, 5} that permits its nuclear translocation for NF- κ B-dependent gene transcription^{45, 46}. In line with these findings, we observed a dramatic nuclear translocation of IKK α , in contrast to a modest nuclear accumulation of IKK β in stimulated Jurkat cells, as shown by subcellular fractionation (Fig. 6b) and immunofluorescence microscopy (Fig. 6c). Moreover, Sam68, which preferentially localizes in the nucleus, did not appear to move from the cytoplasm in response to stimulation (Fig. 5b, c), thus apparently ruling out the possibility that IKK β could phosphorylate Sam68 in the cytoplasm. Furthermore, the Sam68 serine-phosphorylation occurred in parallel with increased IKK α nuclear accumulation in activated Jurkat cells (Fig. 6a, b), hinting that IKK α could phosphorylate Sam68 in the nucleus. In support of this notion, IKK α as well as its active form was detected in the nucleus of HUT102 cells with high *CD25* expression, but not Jurkat cells with low levels of surface *CD25* (Supplementary Fig. S11). Together these results suggest a potential link between IKK α nuclear translocation and *CD25* expression via the phosphorylation of Sam68.

By sequence alignment, a region within Sam68 (a. a. 112–117) was revealed to be similar to the characterized IKK consensus motif, DpSG μ XpS/T⁴ (Fig. 6d). We therefore examined whether Sam68 could be a novel substrate of IKK α by an *in vitro* kinase assay. Besides autophosphorylation, recombinant IKK α strongly phosphorylated GST-Sam68, but not GST control (Fig. 6e), indicating that Sam68 is an IKK α substrate. To address the importance of the serines 113 and 117 (S113/S117) phosphorylation for Sam68's function in NF- κ B signaling, we generated a S113A/S117A (SSAA) mutant Sam68 with the serines substituted with alanines, and examined the association of Sam68 to p65 and its ability to drive the *CD25* κ B site-luciferase reporter expression. The p65-Sam68 interaction was substantially attenuated by the alanine substitution in the stimulated Jurkat cells (Fig. 6f). This result suggests that the S113/S117 phosphorylation is critical for Sam68 to associate with p65, in line with the induced Sam68-p65 interaction during T cell activation (Supplementary Fig. S10). Moreover, ectopic expression of wild-type Sam68, together with p65, induced the *CD25* κ B-driven luciferase reporter expression. By contrast, the SSAA mutant Sam68 overexpression induced luciferase reporter gene expression was reduced 55%, compared with the wild-type Sam68 (Fig. 6g), suggesting that the alanine substitution dampens the Sam68- and p65-dependent *CD25* reporter gene transactivation. Similarly, the induction of

the *CD25* κ B luciferase reporter gene by overexpression of p65 with the KH truncated Sam68, another mutant with diminished interaction with p65 (Fig. 3d–e), was also markedly attenuated (Supplementary Fig. S12). Our results hence suggest that the S113/S117 phosphorylation is key for the Sam68-p65 association and its conferred *CD25* gene transcription.

To examine whether endogenous Sam68 was phosphorylated by IKK α , we generated an antibody that recognizes the S113/S117 phosphorylated form of Sam68. Indeed, we confirmed that endogenous Sam68 was S113/S117 phosphorylated in a time-dependent manner upon TCR activation in Jurkat cells (Fig. 6h). Thus, our results illustrate the serine phosphorylation of Sam68 by IKK α in the nucleus is critical for the NF- κ B-mediated selective transcription of the *CD25* gene, thus adding a new layer of specificity to the TCR-induced NF- κ B activation.

Discussion

Sam68 is involved in various cellular processes including signal transduction, transcription, RNA metabolism, cell cycle regulation and apoptosis^{19, 20}, however, its physiological role, especially in lymphocyte activation has been enigmatic. Emerging evidences implicate that Sam68 plays a critical role in transcriptional regulation. Specifically, Sam68 binds to hnRNP K and subsequently inhibits the latter's function in transactivation of *c-myc* target genes³². Moreover, Sam68 was proposed to function as a transcriptional coregulator to enhance the transcriptional activity of the androgen receptor and mixed lineage leukemia (MLL) complex^{33, 34}. Here we show that Sam68 is recruited to the *CD25* promoter and facilitates p65 binding to *CD25* κ B DNA in normal and transformed human T cells, suggesting a novel role of Sam68 in NF- κ B gene regulation. More importantly, we now discovered a major physiological role for Sam68 in human lymphocyte activation. Of note, our preliminary study indicates that Sam68 appears dispensable for receptor engagement induced CD25 expression in mouse T cells. The different requirement for Sam68 in the *CD25* promoter recognition could be due to the distinct usage of the NF- κ B Rel components to initiate *CD25* gene transactivation in human versus mouse T cells. The p65 and p50 subunits are the major NF- κ B Rel components in the *CD25* κ B DNA binding complex in the normal and transformed human T cells (Fig. 1c, Fig. 2e, Fig. 3b), and knockdown of Sam68 markedly impairs the CD25 upregulation, cell activation and proliferation in human T cells (Fig. 4c–e). In contrast, c-Rel was proposed to be the key NF- κ B subunit supporting *CD25* gene expression in mouse T cells^{47, 48}. Hence our results reveal an important role of Sam68 in regulating human T cell signaling and CD25 expression. The Sam68 function in mice and the distinct roles of Sam68 in human and mouse T cell signaling are certainly worth further investigation.

The IKK complex contains three major components: catalytic subunits IKK α and IKK β and regulatory subunit IKK γ ^{4, 49}. IKK β is the major kinase that phosphorylates I κ B α and appears to be almost an entirely cytoplasmic protein^{4, 50}; whereas recent studies demonstrate that IKK α can enter the nucleus with a functional NLS⁵¹. The nuclear IKK α has been thought to largely remove negative regulators of NF- κ B-dependent gene transcription by phosphorylating the transcriptional repressor complex⁵², chromatin-bound

p65⁵³, or CREB-binding protein⁴⁶. Strikingly, IKK α was shown to be recruited, together with p65, onto NF- κ B target gene promoters where IKK α -mediated phosphorylation of histone H3 thus modulates chromatin accessibility^{45, 54}. More recently, a promoter-specific function of IKK α in the nucleus was highlighted by the finding that nuclear IKK α was required for p65 DNA binding in a gene-specific manner albeit with no involvement of the histone H3 modification⁵⁵. Here we demonstrated Sam68, a preferentially nuclear protein, is a novel substrate of IKK α . Therefore, IKK α appears to play a more sophisticated role in specifying NF- κ B transcription by modulating multiple proteins in the nucleus.

CD25 plays a significant role in both hematopoietic malignancies and solid tumors². CD25 expression and aberrant NF- κ B signaling in the tumors themselves can lead to increased proliferation, anti-apoptotic protein expression and drug resistance. Monoclonal antibodies against CD25 are a significant treatment for patients with CD25-expressed cancers⁵⁶; however, inadequate delivery of the antibody directly to the tumor site may still be problematic, especially in patients with solid tumors expressing CD25. Sam68, a non-Rel component of NF- κ B that confers CD25 gene transcription, could be a novel target for pharmacological interventions. Small molecule inhibitors targeting the p65-Sam68 association may be used to extinguish CD25 expression, in particular in tumors that depend on CD25 for survival.

Methods

Cells and Reagents

Jurkat E6.1, CEM, MT-2, HEK293T (purchased from ATCC) and HUT102 (kindly provided by T. Waldmann at NCI) cells were cultured in RPMI 1640 medium containing 10% fetal calf serum, 2 μ M glutamine, and 100 U/ml each of penicillin and streptomycin. Human peripheral blood lymphocytes were isolated from healthy donor blood as previously described⁷. Antibodies used were: p65, p50, Sam68, I κ B α and (Santa Cruz); β -actin, FLAG, and HA (Sigma); CD25, Caspase3, IKK α , IKK β , and PARP (BD); phospho-Serine (Millipore); MYC and PKC θ (Cell Signaling) and GFP (Roche). RPS3 rabbit antibody was as described⁷. The rabbit polyclonal antibody specific for S113 and S117 phosphorylated Sam68 was generated and affinity purified using the peptide NH₂-CAEKD(Sp)LDP(Sp)FTH-COOH by Primm (Cambridge, MA). Recombinant p65 and p50 proteins were purchased from Active Motif Inc.

Plasmid Constructs

The pEGFP-p65 as well as various p65 truncation constructs, and pGEX-Sam68, pMYC-Sam68, pEGFP-Sam68 as well as various Sam68 truncation constructs were described previously^{7, 57}. The SSAA mutant of Sam68 was generated by site-directed mutagenesis using the Quick Change Kit (Stratagene) with appropriate primers for S113A/S117A, and verified by DNA sequencing.

RNA Interference and Transfection

The siRNA (sense-strand sequence) Sam68-duplex1, 5'-CCUGCACCAGAAACAUACGAAGAUU-3'; Sam68-duplex2, 5'-

GAGAGCAUCCAUAUGGACGUUAUUA -3'; Sam68-duplex3, 5'-GAGACUGGUGCAAAGAUCUCUGUAU -3' (Life Technologies). CD25 pool siRNA was purchased from Santa Cruz. The siRNA sequences for human RPS3 and p65 have been described ⁷. Transient transfection of siRNA and/or DNA constructs into Jurkat cells, HEK293T cells, resting and activated human peripheral blood lymphocytes were performed as described previously ⁷.

Subcellular Fractionation and DNA Affinity Purification

Subcellular fractionation was performed by differential centrifugation as described ⁷. In brief, cells were resuspended in ice-cold Buffer A (10 mM HEPES pH7.9, 10 mM KCl, 1.5 mM MgCl₂, 0.1 mM EDTA, 0.5 mM DTT, 0.4% NP-40, 0.5 mM PMSF, 1 × complete protease inhibitor cocktail [Roche]). Pellets were incubated in Buffer C (20 mM HEPES pH7.9, 420 mM NaCl, 1.5 mM MgCl₂, 25% glycerol, 0.5 mM PMSF, 0.2 mM EDTA, 0.5 mM DTT, 1 × complete protease inhibitor cocktail). The nuclear extract from HUT102 cells was adjusted to 20 mM HEPES buffer (pH7.9) containing 150 mM NaCl, 10% glycerol, 0.5 mM DTT, 0.2 mM EDTA, 0.5 mM PMSF, 0.5 mM MgCl₂ and fractionated on Superose 6 column (GE Healthcare) by gel filtration chromatography. Fractions were separated by SDS-PAGE followed by western blotting or assayed for specific CD25 κB DNA-binding activity using EMSAs. Active fractions (24 to 28) were pooled and then further purified by DNA affinity. Following a preincubation with 30 μg/ml poly(dI-dC) competitor DNA, protein fractions were further purified with biotin-labeled vehicle oligonucleotides or double-stranded DNA containing 5 copies of CD25 κB sites and Streptavidin Sepharose (GE Healthcare) at 4°C with gentle agitation for 2h. The affinity-purified polypeptides were electrophoresed on SDS-PAGE followed by Western Blotting.

Luciferase Reporter Gene Assays

Luciferase reporter gene assays were performed as previously described ⁷. Briefly, cells were cotransfected at a ratio of 10:1 with various promoter-driven firefly luciferase constructs to the renilla luciferase pTKRL plasmid, together with indicated cDNA under some conditions. Cells were cultured for 1–2 days and then stimulated in triplicate before harvest. Lysates were analyzed using the Dual-Luciferase Kit (Promega).

Chromatin Immunoprecipitation (ChIP)

ChIP assays were performed as described ⁷. The following primers were used to amplify the promoter region adjacent to the corresponding κB site: human CD25 promoter (–437 to –234): 5' - GAATATTGGAGGCTGCCTGA -3' and 5' - TCAGCTACGCCATAAAAGG -3' ⁵⁸, human NFKBIA promoter (–316 to –15): 5'-GACGACCCCAATTCAAATCG-3' and 5' -TCAGGCTCGGGGAATTTCC-3'; human IL8 promoter (–121 to +61): 5'-GGGCCATCAGTTGCAAATC-3' and 5'-TTCCTTCCGGTGGTTTCTTC-3'; and human ACTB promoter (–980 to –915): 5' -TGCACTGTGCGGCGAAGC-3' and 5' -TCGAGCCATAAAAGGCAA-3' ⁷.

Electrophoretic Mobility Shift Assays (EMSAs)

EMSAs were carried out as described^{7, 59}. Double-stranded oligonucleotide probes (sense strand shown) used were *NFKBIA*-κB, 5'-CTGGTCGGAAGGACTTCCAGCCAC-3'; *CD25*-κB, 5'-CGGCAGGGGAATCTCCCTCTCC-3'. Samples were resolved on 6% DNA retardation gel (Life Technologies) in 0.25 × TBE buffer, and autoradiography was carried out on dried gels.

Immunofluorescence Microscopy

Confocal microscopy was performed as previously describe⁷. Briefly, cells were fixed with 4 % paraformaldehyde in PBS and then Cellspin mounted onto slides. After a 5-min permeabilization with 0.05 % Triton X-100 in PBS, the fixed cells were stained with appropriate primary antibodies for 45 min, and FITC- or AlexaFluor 594-conjugated secondary antibodies (Life Technologies) for 45 min together with 1 μg/ml of Hoechst 33342 (Sigma) for 5 min at 25 °C. The slides were then rinsed with PBS three times and cover mounted for fluorescence microscopy.

Immunoprecipitation and Western Blot

The cells were harvested and lysed on ice by 0.4 ml of TNTG lysis buffer (30 mM Tris-HCl [pH 8.0], 150 mM NaCl, 1% Triton X-100, and 10% glycerol, 1 × complete protease inhibitor cocktail) for 30 min. The lysates were centrifuged at 10,000 × *g* at 4°C for 10 min. The protein-normalized lysates were subjected to immunoprecipitation by adding 10 μg/ml of the appropriate antibody, 30 μl of protein G-agarose (Roche), and rotating for more than 2 hr in the cold room. The precipitates were washed at least five times with cold TNTG lysis buffer followed by a separation by SDS-PAGE under reduced and denaturing conditions. The resolved protein bands were transferred onto nitrocellulose membranes, probed as described previously^{7, 58} and developed by the Super Signaling system (Pierce, Rockford, IL) according to the manufacturer's instructions.

Real-Time PCR

The RNA isolation and cDNA preparation were as described⁷. Real-time PCR reactions were performed in triplicate using the SYBR Green PCR Master Mix (Applied Biosystems) in a 7900HT sequence detection system (Applied Biosystems) with the following primers: *GAPDH*-f, 5'-CACATCAAGAAGGTGGTG-3'; and *GAPDH*-r, 5'-TGTCATACCAGGAAATGA-3'; *CD25*-f, 5'-CCAGAGATCCCACACGCCACATTCAAAG-3'; and *CD25*-r, 5'-GCATTGACATTGGTTGTCCCAGGACGAG-3'. The relative transcription level was calculated using the Ct method.

In Vitro Kinase Assay

Kinase-active recombinant IKKα protein was purchased from Millipore (Billerica, MA). Bacterially purified glutathione *S*-transferase (GST) and GST-Sam68 were used as substrates. *In vitro* kinase assay was performed as described¹¹. Briefly, enzyme (100 ng) and substrate (2 μg) were incubated in reaction buffer (25 mM Tris-HCl [pH 8.0], 50 mM KCl, 10 mM MgCl₂, 1 mM DTT, 1 mM Na₃VO₄, 1 mM ATP) with 0.5 μCi ³²P-γ-ATP (GE

Healthcare) added at 37°C for 30 min. The reactions were resolved by SDS–PAGE and visualized by autoradiography.

Supplementary Material

Refer to Web version on PubMed Central for supplementary material.

Acknowledgements

We are grateful to Michael J. Lenardo (National Institute of Allergy and Infectious Diseases) for support in initiating this work; Thomas Waldmann (National Cancer Institute) for providing the HUT102 cells; Lily Koo (National Institute of Allergy and Infectious Diseases) for help with fluorescence microscopy; Pierre Coulombe (Johns Hopkins University) for use of equipment. F.W. was supported by a Research Scholar Grant, RSG-13-052-01-MPC from the American Cancer Society. E.M.W. and A.H. are Hopkins Sommer Scholars. This work was supported in part by National Institutes of Health Grant R00CA137171 (to F.W.) and T32CA009110 (to E.M.W.).

References

1. Morris JC, Waldmann TA. Advances in interleukin 2 receptor targeted treatment. *Ann. Rheum. Dis.* 2000; 59(Suppl 1):i109–i114. [PubMed: 11053100]
2. Kuhn DJ, Dou QP. The role of interleukin-2 receptor alpha in cancer. *Front. Biosci.* 2005; 10:1462–1474. [PubMed: 15769637]
3. Wan F, Lenardo MJ. The nuclear signaling of NF-kappaB: current knowledge, new insights, and future perspectives. *Cell Res.* 2010; 20:24–33. [PubMed: 19997086]
4. Hayden MS, Ghosh S. Shared principles in NF-kappaB signaling. *Cell.* 2008; 132:344–362. [PubMed: 18267068]
5. Vallabhapurapu S, Karin M. Regulation and function of NF-kappaB transcription factors in the immune system. *Annu. Rev. Immunol.* 2009; 27:693–733. [PubMed: 19302050]
6. Smale ST. Hierarchies of NF-kappaB target-gene regulation. *Nat. Immunol.* 2011; 12:689–694. [PubMed: 21772277]
7. Wan F, et al. Ribosomal protein S3: a KH domain subunit in NF-kappaB complexes that mediates selective gene regulation. *Cell.* 2007; 131:927–939. [PubMed: 18045535]
8. Wan F, Lenardo MJ. Specification of DNA binding activity of NF-kB proteins. *Cold Spring Harb. Perspect. Biol.* 2009; 1:a000067. [PubMed: 20066093]
9. Phelps CB, Sengchanthalangsy LL, Malek S, Ghosh G. Mechanism of kappa B DNA binding by Rel/NF-kappa B dimers. *J. Biol. Chem.* 2000; 275:24392–24399. [PubMed: 10825175]
10. Urban MB, Schreck R, Baeuerle PA. NF-kappa B contacts DNA by a heterodimer of the p50 and p65 subunit. *Embo J.* 1991; 10:1817–1825. [PubMed: 2050119]
11. Wan F, et al. IKKbeta phosphorylation regulates RPS3 nuclear translocation and NF-kappaB function during infection with Escherichia coli strain O157:H7. *Nat. Immunol.* 2011; 12:335–343. [PubMed: 21399639]
12. Cadera EJ, et al. NF-kappaB activity marks cells engaged in receptor editing. *J. Exp. Med.* 2009; 206:1803–1816. [PubMed: 19581408]
13. Mokhtari D, Barbu A, Mehmeti I, Vercamer C, Welsh N. Overexpression of the nuclear factor-kappaB subunit c-Rel protects against human islet cell death in vitro. *Am. J. Physiol. Endocrinol. Metab.* 2009; 297:E1067–E1077. [PubMed: 19706790]
14. Sen N, et al. Hydrogen sulfide-linked sulfhydration of NF-kappaB mediates its antiapoptotic actions. *Mol. Cell.* 2012; 45:13–24. [PubMed: 22244329]
15. Perkins ND. Cysteine 38 holds the key to NF-kappaB activation. *Mol. Cell.* 2012; 45:1–3. [PubMed: 22244324]
16. Gao X, et al. Bacterial effector binding to ribosomal protein s3 subverts NF-kappaB function. *PLoS Pathog.* 2009; 5:e1000708. [PubMed: 20041225]

17. Pham TH, et al. Functional differences and interactions between the Escherichia coli type III secretion system effectors NleH1 and NleH2. *Infect. Immun.* 2012; 80:2133–2140. [PubMed: 22451523]
18. Wier EM, Neighoff J, Sun X, Fu K, Wan F. Identification of an N-terminal truncation of the NF-kappaB p65 Subunit that specifically modulates ribosomal protein S3-dependent NF-kappaB gene expression. *J. Biol. Chem.* 2012; 287:43019–43029. [PubMed: 23115242]
19. Lukong KE, Richard S. Sam68, the KH domain-containing superSTAR. *Biochim. Biophys. Acta.* 2003; 1653:73–86. [PubMed: 14643926]
20. Rajan P, et al. Regulation of gene expression by the RNA-binding protein Sam68 in cancer. *Biochem. Soc. Trans.* 2008; 36:505–507. [PubMed: 18481990]
21. Huot ME, et al. The Sam68 STAR RNA-binding protein regulates mTOR alternative splicing during adipogenesis. *Mol. Cell.* 2012; 46:187–199. [PubMed: 22424772]
22. Iijima T, et al. SAM68 regulates neuronal activity-dependent alternative splicing of neurexin-1. *Cell.* 2011; 147:1601–1614. [PubMed: 22196734]
23. Bielli P, Busa R, Paronetto MP, Sette C. The RNA-binding protein Sam68 is a multifunctional player in human cancer. *Endocr. Relat. Cancer.* 2011; 18:R91–R102. [PubMed: 21565971]
24. Henao-Mejia J, et al. Suppression of HIV-1 Nef translation by Sam68 mutant-induced stress granules and nef mRNA sequestration. *Mol. Cell.* 2009; 33:87–96. [PubMed: 19150430]
25. Richard S. Reaching for the stars: Linking RNA binding proteins to diseases. *Adv. Exp. Med. Biol.* 2010; 693:142–157. [PubMed: 21189691]
26. Sette C. Post-translational regulation of star proteins and effects on their biological functions. *Adv. Exp. Med. Biol.* 2010; 693:54–66. [PubMed: 21189685]
27. Matter N, Herrlich P, Konig H. Signal-dependent regulation of splicing via phosphorylation of Sam68. *Nature.* 2002; 420:691–695. [PubMed: 12478298]
28. Paronetto MP, et al. Sam68 regulates translation of target mRNAs in male germ cells, necessary for mouse spermatogenesis. *J. Cell Biol.* 2009; 185:235–249. [PubMed: 19380878]
29. He JJ, Henao-Mejia J, Liu Y. Sam68 functions in nuclear export and translation of HIV-1 RNA. *RNA Biol.* 2009; 6:384–386. [PubMed: 19535902]
30. Najib S, Martin-Romero C, Gonzalez-Yanes C, Sanchez-Margalet V. Role of Sam68 as an adaptor protein in signal transduction. *Cell Mol. Life Sci.* 2005; 62:36–43. [PubMed: 15619005]
31. Ramakrishnan P, Baltimore D. Sam68 is required for both NF-kappaB activation and apoptosis signaling by the TNF receptor. *Mol. Cell.* 2011; 43:167–179. [PubMed: 21620750]
32. Yang JP, Reddy TR, Truong KT, Suhasini M, Wong-Staal F. Functional interaction of Sam68 and heterogeneous nuclear ribonucleoprotein K. *Oncogene.* 2002; 21:7187–7194. [PubMed: 12370808]
33. Rajan P, et al. The RNA-binding and adaptor protein Sam68 modulates signal-dependent splicing and transcriptional activity of the androgen receptor. *J. Pathol.* 2008; 215:67–77. [PubMed: 18273831]
34. Cheung N, Chan LC, Thompson A, Cleary ML, So CW. Protein arginine-methyltransferase-dependent oncogenesis. *Nat. Cell Biol.* 2007; 9:1208–1215. [PubMed: 17891136]
35. Tan TH, et al. Kappa B site-dependent activation of the interleukin-2 receptor alpha-chain gene promoter by human c-Rel. *Mol. Cell. Biol.* 1992; 12:4067–4075. [PubMed: 1508203]
36. Kunsch C, Lang RK, Rosen CA, Shannon MF. Synergistic transcriptional activation of the IL-8 gene by NF-kappa B p65 (RelA) and NF-IL-6. *J. Immunol.* 1994; 153:153–164. [PubMed: 8207232]
37. Haskill S, et al. Characterization of an immediate-early gene induced in adherent monocytes that encodes I kappa B-like activity. *Cell.* 1991; 65:1281–1289. [PubMed: 1829648]
38. Bunn PA Jr, Foss FM. T-cell lymphoma cell lines (HUT102 and HUT78) established at the National Cancer Institute: history and importance to understanding the biology, clinical features, and therapy of cutaneous T-cell lymphomas (CTCL) and adult T-cell leukemia-lymphomas (ATLL). *J. Cell. Biochem.* 1996; 24:12–23.
39. Glisovic T, Bachorik JL, Yong J, Dreyfuss G. RNA-binding proteins and post-transcriptional gene regulation. *FEBS Lett.* 2008; 582:1977–1986. [PubMed: 18342629]

40. Moumen A, Masterson P, O'Connor MJ, Jackson SP. hnRNP K: an HDM2 target and transcriptional coactivator of p53 in response to DNA damage. *Cell*. 2005; 123:1065–1078. [PubMed: 16360036]
41. Taylor SJ, Shalloway D. An RNA-binding protein associated with Src through its SH2 and SH3 domains in mitosis. *Nature*. 1994; 368:867–871. [PubMed: 7512694]
42. Fumagalli S, Totty NF, Hsuan JJ, Courtneidge SA. A target for Src in mitosis. *Nature*. 1994; 368:871–874. [PubMed: 7512695]
43. Cheadle C, et al. Control of gene expression during T cell activation: alternate regulation of mRNA transcription and mRNA stability. *BMC Genomics*. 2005; 6:75. [PubMed: 15907206]
44. Lam LT, et al. Compensatory IKKalpha activation of classical NF-kappaB signaling during IKKbeta inhibition identified by an RNA interference sensitization screen. *Proc. Natl. Acad. Sci. USA*. 2008; 105:20798–20803. [PubMed: 19104039]
45. Yamamoto Y, Verma UN, Prajapati S, Kwak YT, Gaynor RB. Histone H3 phosphorylation by IKK-alpha is critical for cytokine-induced gene expression. *Nature*. 2003; 423:655–659. [PubMed: 12789342]
46. Huang WC, Ju TK, Hung MC, Chen CC. Phosphorylation of CBP by IKKalpha promotes cell growth by switching the binding preference of CBP from p53 to NF-kappaB. *Mol. Cell*. 2007; 26:75–87. [PubMed: 17434128]
47. Gerondakis S, et al. Rel-deficient T cells exhibit defects in production of interleukin 3 and granulocyte-macrophage colony-stimulating factor. *Proc. Natl. Acad. Sci. USA*. 1996; 93:3405–3409. [PubMed: 8622948]
48. Liou HC, et al. c-Rel is crucial for lymphocyte proliferation but dispensable for T cell effector function. *Int. Immunol*. 1999; 11:361–371. [PubMed: 10221648]
49. Scheidereit C. IkappaB kinase complexes: gateways to NF-kappaB activation and transcription. *Oncogene*. 2006; 25:6685–6705. [PubMed: 17072322]
50. Gloire G, Dejardin E, Piette J. Extending the nuclear roles of IkappaB kinase subunits. *Biochem. Pharmacol*. 2006; 72:1081–1089. [PubMed: 16846590]
51. Sil AK, Maeda S, Sano Y, Roop DR, Karin M. IkappaB kinase-alpha acts in the epidermis to control skeletal and craniofacial morphogenesis. *Nature*. 2004; 428:660–664. [PubMed: 15071597]
52. Hoberg JE, Yeung F, Mayo MW. SMRT derepression by the IkappaB kinase alpha: a prerequisite to NF-kappaB transcription and survival. *Mol. Cell*. 2004; 16:245–255. [PubMed: 15494311]
53. Lawrence T, Bebien M, Liu GY, Nizet V, Karin M. IKKalpha limits macrophage NF-kappaB activation and contributes to the resolution of inflammation. *Nature*. 2005; 434:1138–1143. [PubMed: 15858576]
54. Anest V, et al. A nucleosomal function for IkappaB kinase-alpha in NF-kappaB-dependent gene expression. *Nature*. 2003; 423:659–663. [PubMed: 12789343]
55. Gloire G, et al. Promoter-dependent effect of IKKalpha on NF-kappaB/p65 DNA binding. *J. Biol. Chem*. 2007; 282:21308–21318. [PubMed: 17537731]
56. Waldmann TA. Daclizumab (anti-Tac, Zenapax) in the treatment of leukemia/lymphoma. *Oncogene*. 2007; 26:3699–3703. [PubMed: 17530023]
57. Chen T, Boisvert FM, Bazett-Jones DP, Richard S. A role for the GSG domain in localizing Sam68 to novel nuclear structures in cancer cell lines. *Mol. Biol. Cell*. 1999; 10:3015–3033. [PubMed: 10473643]
58. Ainbinder E, et al. Mechanism of rapid transcriptional induction of tumor necrosis factor alpha-responsive genes by NF-kappaB. *Mol. Cell. Biol*. 2002; 22:6354–6362. [PubMed: 12192035]
59. Lenardo MJ, Fan CM, Maniatis T, Baltimore D. The involvement of NF-kappa B in beta-interferon gene regulation reveals its role as widely inducible mediator of signal transduction. *Cell*. 1989; 57:287–294. [PubMed: 2495183]

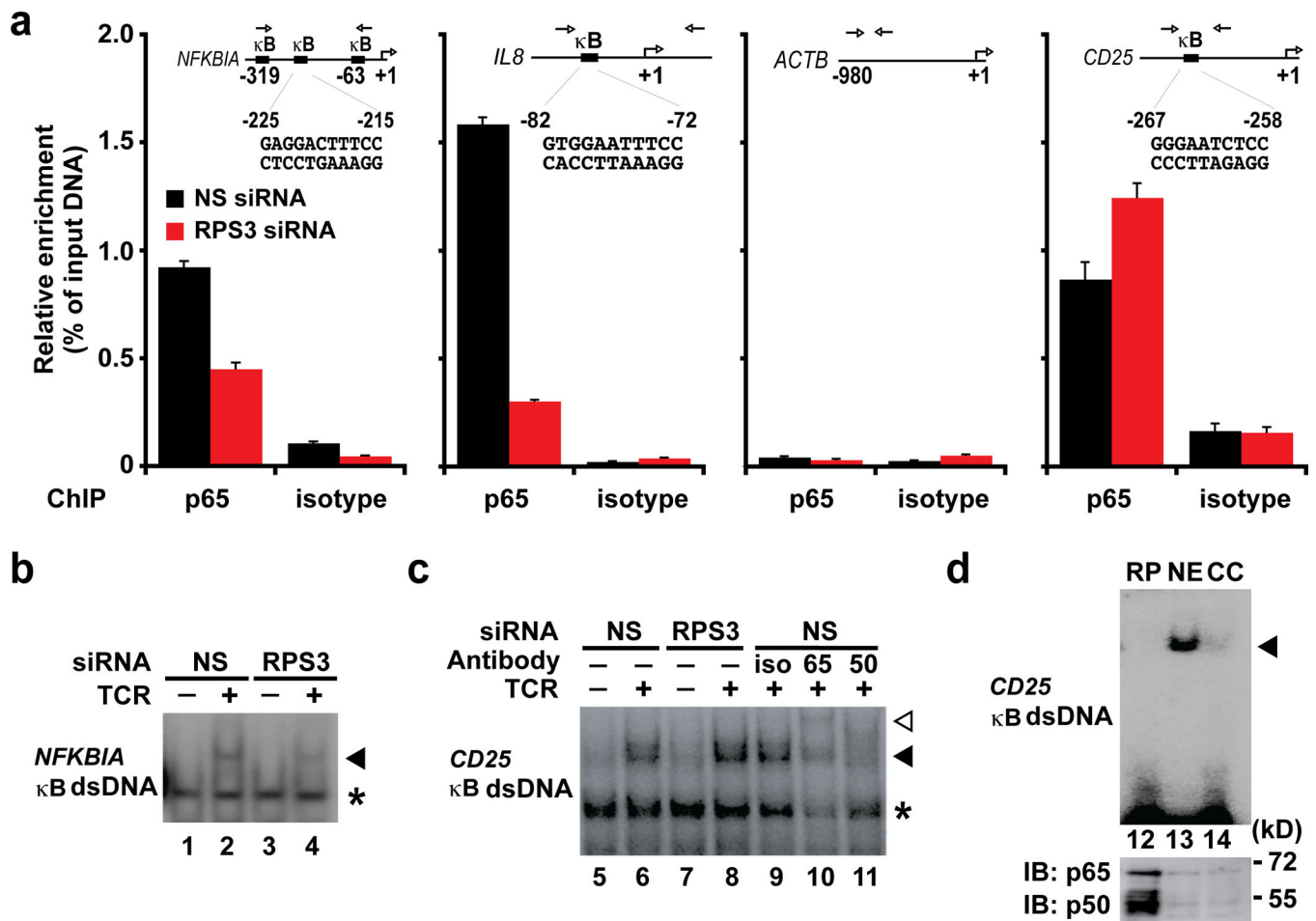


Figure 1. Recognition of *CD25* κ B DNA requires Rel components but does not depend on RPS3
(a) Jurkat cells transfected with nonspecific (NS) or RPS3 siRNAs were stimulated with α CD3/CD28 (1 μ g/ml each). The recruitment of endogenous p65 to the promoters of *NFKBIA*, *IL8*, *ACTB*, and *CD25* genes were analyzed by chromatin immunoprecipitation (ChIP) with either isotype or p65 antibodies. Diagrams inside show the sequences and locations of κ B sites in corresponding promoters. The p65-bound DNA was analyzed by quantitative real-time PCR (primers, above diagramed) and normalized to input DNA (mean \pm S.D., n = 3). **(b–c)** Jurkat cells were left untreated (–) or stimulated (+) as in (a), after transfection with siRNAs. The nuclear extracts were analyzed by EMSA with a 32 P-labeled *NFKBIA* κ B probe (b) or *CD25* κ B probe (c). The nonspecific bands and corresponding κ B DNA complexes were labeled with asterisks and arrowheads, respectively. In (c), the supershift *CD25* κ B bands by isotype (iso), p65 (65), or p50 (50) antibodies were labeled with an open arrowhead. **(d)** Recombinant p65 and p50 proteins (RP) or nuclear extracts (NE) from HUT102 cells was subjected to an EMSA with a 32 P-labeled *CD25* κ B double-stranded DNA, in some cases with 100-fold unlabeled *CD25* κ B oligonucleotide competitor (CC). The *CD25* κ B site specific NF- κ B DNA binding complex is labeled with a triangle. The amount of p65 and p50 proteins in recombinant proteins and nuclear extracts were immunoblotted (IB) with indicated antibodies.

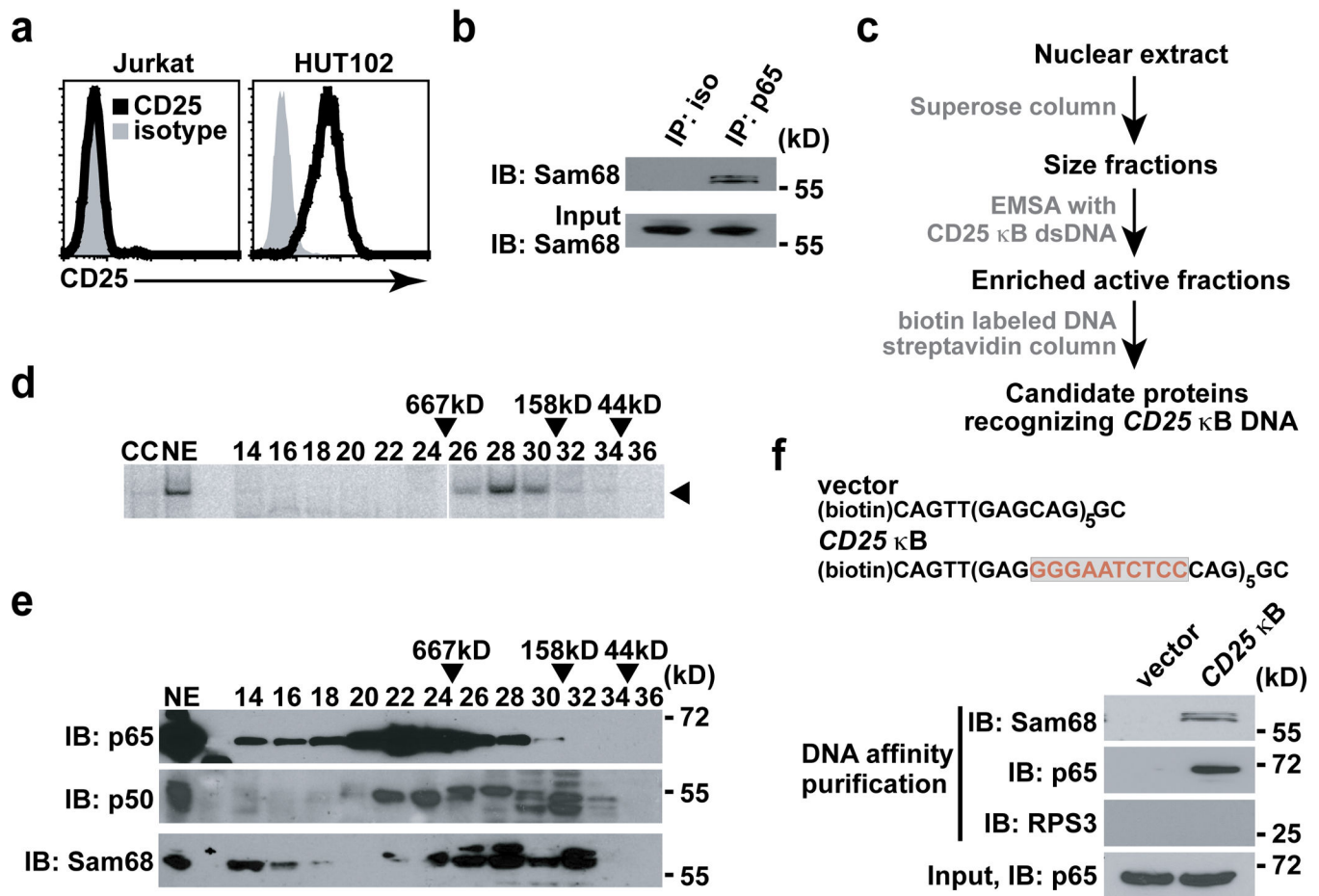


Figure 2. Sam68 is a novel p65-interacting protein in the NF-κB complex binding to the CD25 κB site

(a) The cell surface CD25 expression in resting Jurkat A3 cells and HUT102 cells was stained with isotype antibody or PE-conjugated CD25 antibody, and analyzed by FACS. (b) Nuclear extracts from HUT102 cells were immunoblotted (IB) directly or after immunoprecipitation (IP) with isotype (iso) or p65 antibody for Sam68. (c) The purification scheme for proteins specifically recognizing CD25 κB DNA by gel filtration and DNA affinity purification in the HUT102 cells. (d) Nuclear extracts prepared from HUT102 cells were separated on a Superose 6 gel filtration column. The fractions 14 to 36 were interrogated for CD25 κB DNA binding activity in EMSAs. The unfractionated nuclear extract (NE) was also analyzed with ³²P-labeled CD25 κB probe or with 100-fold unlabeled CD25 κB oligonucleotide competitors (CC). The CD25 κB complex was indicated by a triangle and the elution positions of protein standards are indicated. (e) The Superose 6 fractions 14 through 36 were immunoblotted (IB) with p65, p50, and Sam68 antibodies and the elution positions of protein standards are indicated. NE indicates the unfractionated nuclear extract. (f) Schematic diagram of vector double-stranded DNA or that contains 5 copies of CD25 κB sites. Immunoblot (IB) of the elution after DNA affinity purification for

indicated proteins from pooled fractions from 24 to 30 harboring high *CD25* κ B DNA binding activity.

Author Manuscript

Author Manuscript

Author Manuscript

Author Manuscript

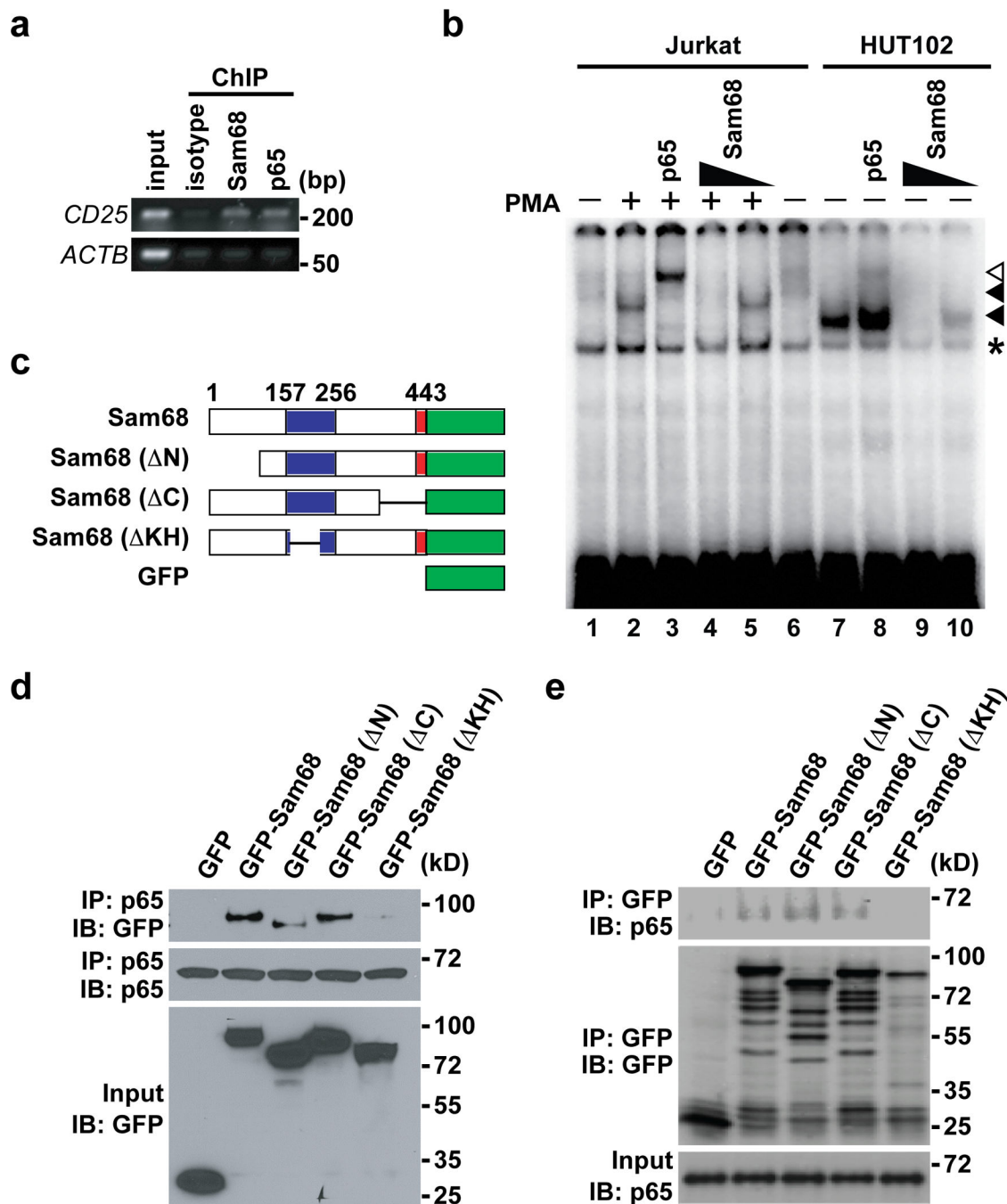


Figure 3. Sam68 is an integral component in the NF- κ B complex binding to the *CD25* κ B site
(a) HUT102 cells were used for ChIP assays with indicated antibodies. The recruitment of indicated proteins to the κ B region of *CD25* promoter or *ACTB* promoter in the immunoprecipitates was detected by PCR. **(b)** Nuclear extracts of HUT102 cells (lanes 7–10) and Jurkat cells (lanes 1–6) treated with (+) or without (–) PMA (50 ng/ml, 30 min) were analyzed by EMSA with 32 P-labeled *CD25* κ B oligonucleotides. Supershift analysis was conducted with p65 or different doses of Sam68 antibodies (lanes 3–5 and 8–10). *CD25* κ B DNA binding complexes in Jurkat cells and HUT102 cells are labeled with filled

triangles, and the supershifted bands and nonspecific bands are labeled with an open triangle and an asterisk, respectively. (c) Schematic diagram of the full-length and truncated mutants (N lacks residues 1–102, C lacks residues 347–443, and KH lacks residues 165–224) of Sam68 fused with EGFP. The hnRNP K homology (KH) domain (residues 157–256) and nuclear localization signal (NLS) are labeled in blue and red, respectively. (d–e) Whole cell lysates from HEK293T cells transfected with GFP vehicle or indicated GFP-fused full-length or truncated Sam68, were immunoblotted (IB) directly or after immunoprecipitation (IP) with p65 antibody (d) or GFP antibody (e) for indicated proteins.

Author Manuscript

Author Manuscript

Author Manuscript

Author Manuscript

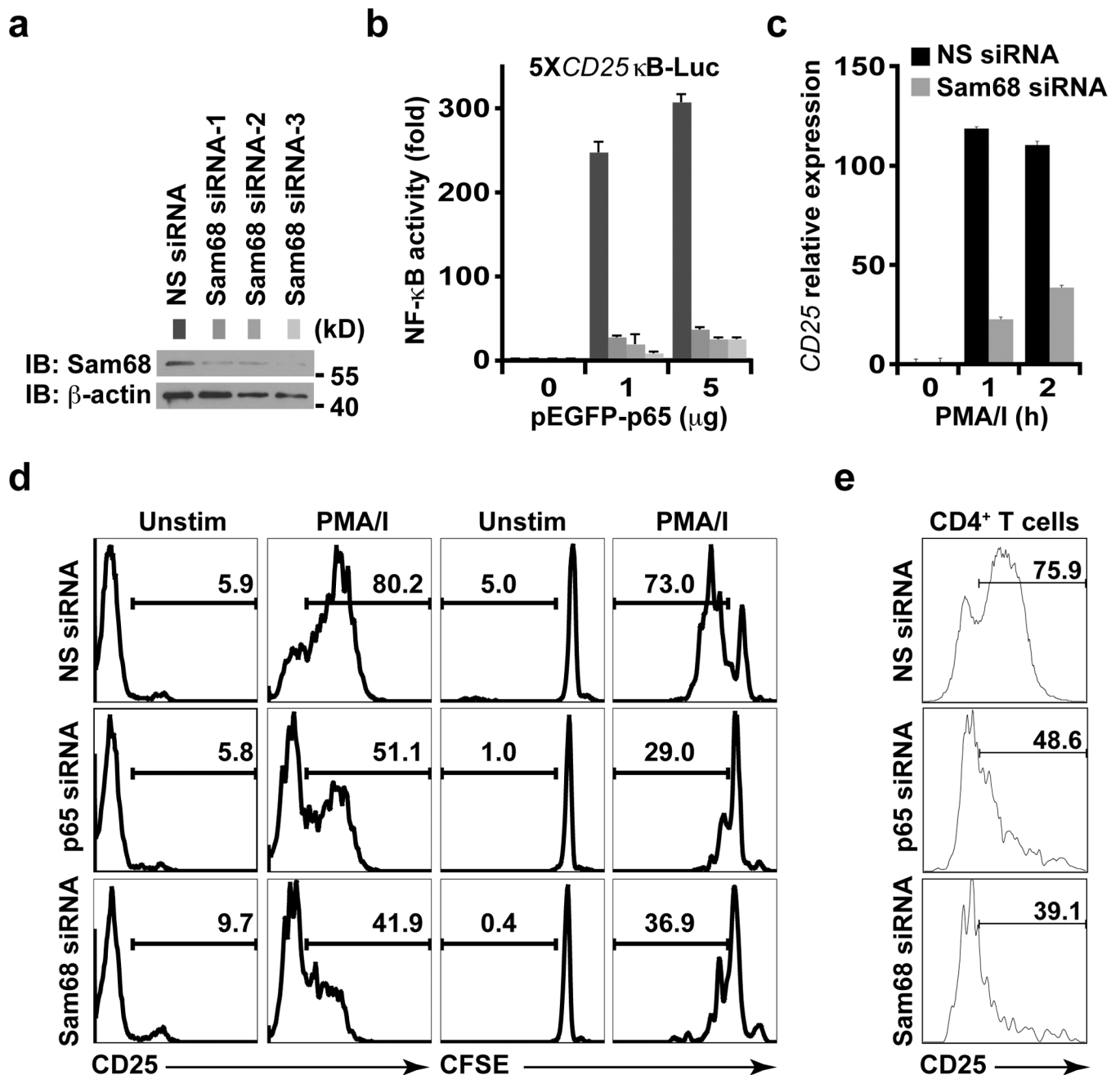


Figure 4. The critical role of Sam68 in the expression of the *CD25* gene in T cells
(a) Jurkat cells were transfected with nonspecific (NS) or three different Sam68 specific siRNAs. 72 hr later, the knockdown of Sam68 was examined by immunoblot (IB) for Sam68 with β -actin as a loading control. **(b)** NF- κ B luciferase assay (mean \pm S.D., $n = 3$) of Jurkat cells transfected with nonspecific (NS) or Sam68 siRNAs, together with indicated amount of p65 plasmids and a luciferase reporter gene driven by $5 \times CD25 \kappa B$ sites. **(c)** Real-time PCR quantization (mean \pm S.D., $n = 3$) of mRNA level of *CD25* normalized to *GAPDH* in Jurkat cells silenced with NS or pooled Sam68 siRNAs and stimulated by 50 ng/ml PMA plus 1.5 μ M ionomycin (PMA/I) for indicated time. **(d)** Human peripheral blood

T lymphocytes were transfected with nonspecific (NS), p65, or Sam68 siRNAs and then stimulated with PMA/I or left unstimulated (Unstim). Flow cytometry histograms of T cells with CD25 induction and carboxyfluorescein succinimidyl ester (CFSE) dilution were assessed 12 hr and 72 hr later, respectively. The percentage of CD25⁺ cells and of dividing cells is shown. (e) Flow-sorted *in vitro* activated human CD4⁺CD25⁺ cells were transfected with nonspecific (NS), p65, or Sam68 siRNAs. The surface CD25 expression was analyzed at 72 hr, and the percentage of CD25⁺ cells is shown.

Author Manuscript

Author Manuscript

Author Manuscript

Author Manuscript

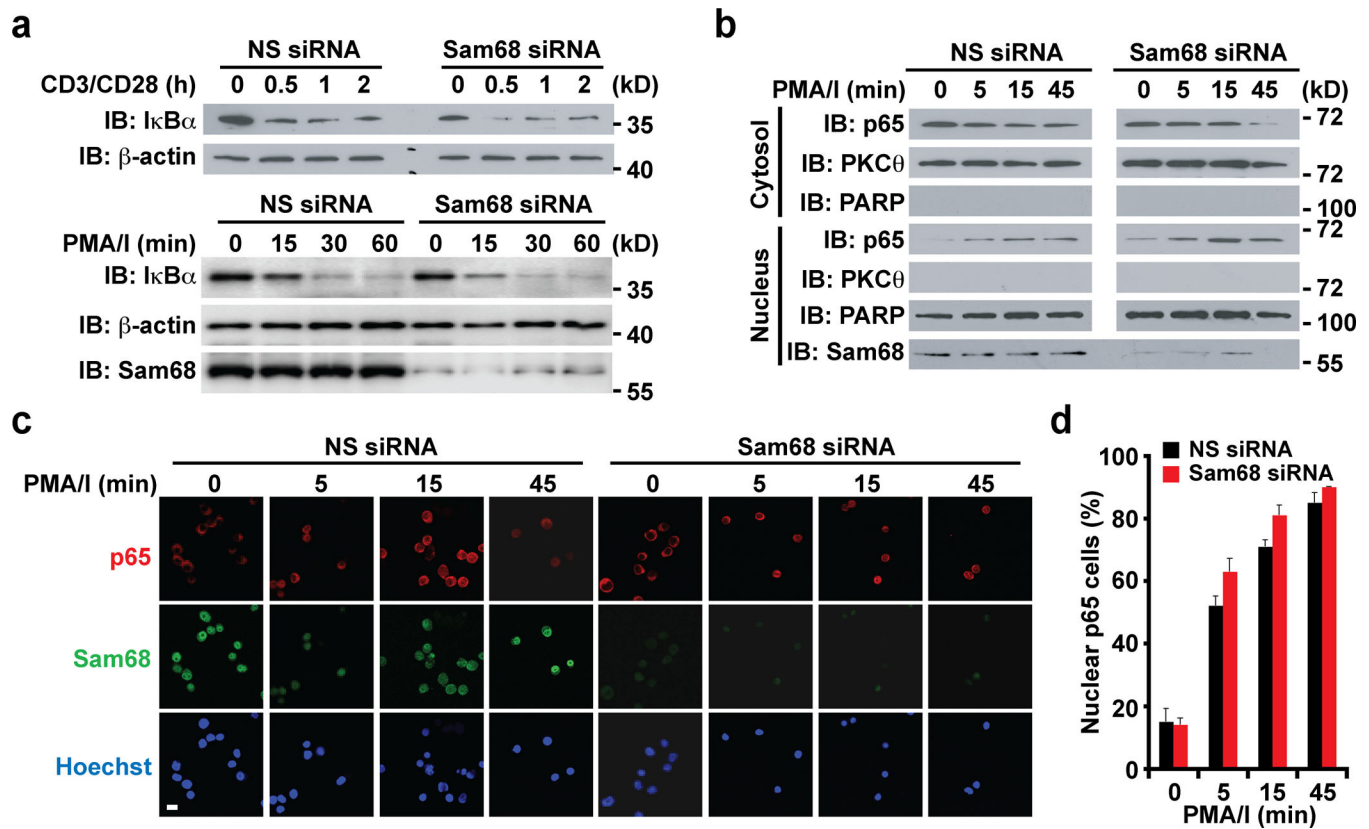


Figure 5. Knockdown of Sam68 does not impair the TCR-engagement-induced NF- κ B signaling and p65 nuclear translocation

(a) Jurkat cells expressing either nonspecific (NS) or Sam68 specific siRNA were stimulated with anti-CD3/CD28 (1 μ g/ml each, top panel) or 50 ng/ml PMA plus 1.5 μ M ionomycin (PMA/I, bottom panel) for indicated periods. Whole cell lysates were extracted and immunoblotted (IB) for I κ B α and Sam68, with β -actin as a loading control. (b) Immunoblots using indicated antibodies of cytosolic and nuclear fractions derived from Jurkat cells transfected with indicated siRNAs and left unstimulated or stimulated with PMA/I for indicated periods. PKC θ and PARP served as cytosolic and nuclear markers, respectively. (c) Confocal micrographs of Jurkat cells silenced and stimulated as in (b). The fixed cells were stained for Sam68, p65, and nuclei. (d) Percentage (mean \pm S.D., n = 3) of Jurkat cells (n > 200) with nuclear p65 with nonspecific or Sam68 specific siRNA expression was quantified.

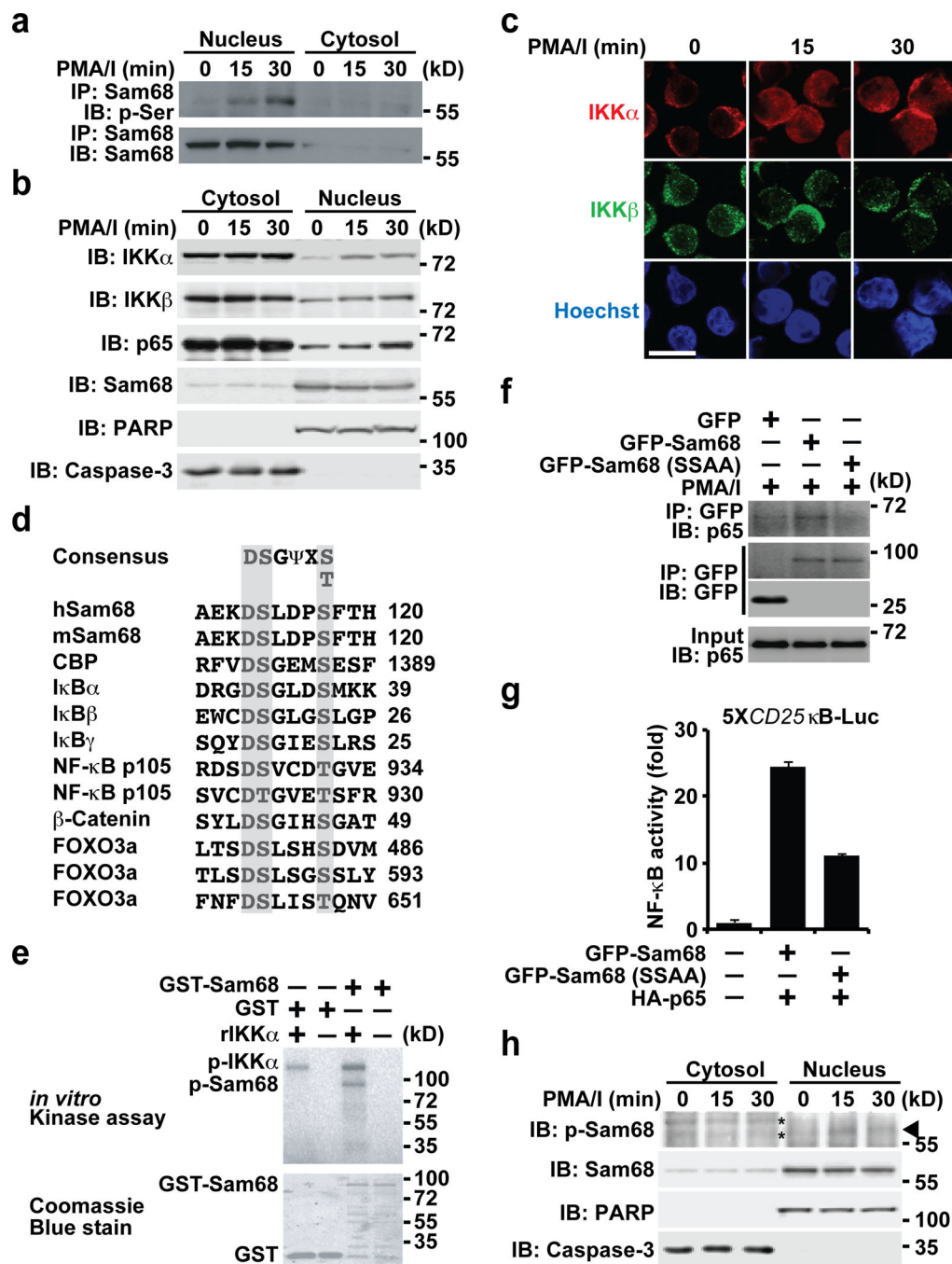


Figure 6. IKK α phosphorylates Sam68 in the nucleus during TCR engagement-induced NF- κ B activation

(a) Jurkat cells stimulated with PMA plus ionomycin (PMA/I) for indicated periods were fractionated into cytosolic and nuclear subcellular fractions, and then analyzed by immunoprecipitation (IP) and immunoblotted (IB) with antibodies specific for Sam68 and serine-phosphorylated proteins (p-Ser). (b) Cytosolic and nuclear fractions derived from Jurkat cells stimulated as indicated were directly immunoblotted (IB) for indicated proteins. Full-length Caspase 3 and PARP served as cytosolic and nuclear markers, respectively. (c)

Confocal micrographs of Jurkat cells stimulated as indicated, and the fixed cells were stained for IKK α , IKK β , and nuclei. **(d)** Consensus motif of IKK phosphorylation sites. The sequence of Sam68 is aligned with those of CBP, I κ Bs, and other known substrates for comparison. The conserved phosphorylation motif for IKK is highlighted in gray (Ψ , hydrophobic amino acid; X, any amino acid). The numbers at right show the position in the amino acid sequence of the last residues depicted. **(e)** Autoradiograph (upper panel) and Coomassie blue-stained gel (bottom panel) of *in vitro* kinase assays performed with recombinant GST or GST-Sam68 protein using recombinant human IKK α as kinase. The phosphorylated IKK α and Sam68 were labeled respectively. **(f)** Whole cell lysates from Jurkat cells expressing either GFP vehicle or indicated GFP-fused wild type or mutant Sam68, were stimulated with PMA/I for 30 min and immunoblotted (IB) directly or after immunoprecipitation (IP) with GFP antibody for indicated proteins. **(g)** NF- κ B luciferase assay (mean \pm S.D., n = 3) of Jurkat cells transfected with p65 and indicated GFP-fused wild type or mutant Sam68 plasmids together with a luciferase reporter gene driven by 5 \times CD25 κ B sites. **(h)** Cytosolic and nuclear fractions derived from Jurkat cells stimulated as indicated were directly immunoblotted (IB) for Sam68 phosphorylation with antibodies specific for S113/S117 phosphorylated Sam68 and general Sam68. Full-length Caspase 3 and PARP served as cytosolic and nuclear markers, respectively. Phosphorylated Sam68 is labeled by a triangle, and asterisks label nonspecific bands.

Table 1

Interactions of selected KH-domain containing proteins with p65 in HUT102 cells

KH domain proteins	p65 interaction
Ribosomal protein S3 (RPS3)	++
Src-associated substrate during mitosis of 68 kDa (Sam68)	++
Quaking homology, KH domain RNA binding (QKI)	-
ERA G protein like 1 (ERAL1)	-
KH domain containing, RNA binding, signal transduction associated 3	-
Activating signal cointegrator 1 complex subunit 1	-
ES cell associated transcript 1	-
Splicing factor 1	-
HRB2	-
Far upstream element binding protein 1 (FUBP1)	-
Far upstream element binding protein 3 (FUBP3)	-
Heterogeneous nuclear ribonucleoprotein K (hnRNP K)	+

Nuclear extracts derived from HUT102 cells were immunoprecipitated with p65 antibody. The immunoprecipitates were separated on SDS-PAGE gel and immunoblotted by antibodies against indicated KH domain-containing proteins. Their binding capabilities to p65 were summarized from three experiments as ++, strong interaction; +, detectable interaction; -, undetectable interaction.