

Diversity and distribution of amphibians in Romania

Dan Cogălniceanu¹, Paul Székely¹, Ciprian Samoilă¹, Ruben Iosif¹, Marian Tudor¹, Rodica Plăiașu², Florina Stănescu¹, Laurențiu Rozyłowicz³

1 *University Ovidius Constanța, Faculty of Natural Sciences and Agricultural Sciences, Al. Universității 1, corp B, Constanța 900470, Romania* **2** *Institute of Speleology, Romanian Academy, Calea 13 Septembrie 13, Bucharest 050711, Romania* **3** *University of Bucharest, Center for Environmental Research and Impact Studies, 1 N. Bălcescu, Bucharest 010041, Romania*

Corresponding author: *Laurențiu Rozyłowicz* (laurentiu.rozyłowicz@g.unibuc.ro)

Academic editor: *F. Andreone* | Received 17 February 2013 | Accepted 22 April 2013 | Published 30 April 2013

Citation: Cogălniceanu D, Székely P, Samoilă C, Iosif R, Tudor M, Plăiașu R, Stănescu F, Rozyłowicz L (2013) Diversity and distribution of amphibians in Romania. *ZooKeys* 296: 35–57. doi: 10.3897/zookeys.296.4872

Abstract

Nineteen species of amphibians inhabit Romania, 9 of which reach their range limit on this territory. Based on published occurrence reports, museum collections and our own data we compiled a national database of amphibian occurrences. We georeferenced 26779 amphibian species occurrences, and performed an analysis of their spatial patterns, checking for hotspots and patterns of species richness. The results of spatial statistic analyses supported the idea of a biased sampling for Romania, with clear hotspots of increased sampling efforts. The sampling effort is biased towards species with high detectability, protected areas, and large cities. Future sampling efforts should be focused mostly on species with a high rarity score in order to accurately map their range. Our results are an important step in achieving the long-term goals of increasing the efficiency of conservation efforts and evaluating the species range shifts under climate change scenarios.

Keywords

Amphibia, species distribution, species range, biodiversity data, species richness, rarity

Introduction

Biodiversity studies have intensified after the Convention on Biological Diversity was signed at the 1992 World Summit in Rio de Janeiro. Despite repeated attempts to halt biodiversity loss, the 2010 targets have not been met (Barbault 2011). The new Aichi Biodiversity Targets provide more detailed and focused targets for 2020, but achieving them requires detailed data and information on biodiversity. Several global scale initiatives have been started to compile the vast biodiversity datasets held in museums and herbaria, publications or data resulting from intensive field surveys e.g., GBIF, EOL (Franklin 2009). The increased amount of biodiversity data available is accompanied by progress in computation that allows not only the proper management of data (Matin et al. 2012) but also its advanced and precise analysis (Reese et al. 2005). Basic knowledge of the species distributions within a region is required for a proper management of biodiversity, e.g., to predict species extinction under habitat loss, to understand the potential impacts of climate change on biodiversity, to prioritize conservation efforts and design conservation areas (Margules and Pressey 2000, Primack 2010).

Mapping species distribution data is a popular and successful way of assembling and presenting spatial information on a variety of organisms, including amphibians (Gasc et al. 1997). While most mapping projects end with the production of an atlas, the occurrence data can be further analyzed or transformed (e.g., Araújo 2004, Arntzen 2006). The species distribution maps allow answering fundamental questions in ecology and macroecology, such as patterns of abundance, rarity, richness, turn-over and assemblage composition at different spatial scales (Elith et al. 2010, Baselga et al. 2012, Denoël 2012). Moreover, databases of species occurrences have been used in conservation planning, investigation and testing the performance of different methodologies (Jones-Farrand et al. 2011) especially the selection of protected areas (Williams et al. 2000, Araújo et al. 2004), providing a framework for survey design, assessing species-environment associations, and modeling species distribution (Sillero et al. 2005, Popescu and Gibbs 2009). Comprehensive data on species occurrences are required for the identification of threatened taxa. Two of the five sets of criteria used by IUCN (Red List Criteria version 3.1, IUCN 2001) are based on geographic range and shifts in range (i.e., Extent of Occurrence and Area of Occupancy). Making the existing information available to the broader scientific community for use in conservation, education and sustainable development is a priority. Nevertheless, the data need to fulfill minimal criteria to be exploitable. For example Stork et al. (1996) cited three reasons for which actions affecting biodiversity and conservation are based on inadequate information: (1) the data necessary for informed decision-making are unavailable, incomplete, or unreliable, (2) the data are not presented in a format that policy-makers and managers can use, and (3) the data are incorrectly interpreted.

Eastern European countries do not usually provide quality distribution data due to less uniform and intensive recording effort (Williams et al. 2000). This is also valid for Romania (Ioja et al. 2010) where, after publishing the volume on Amphibians in

the series Fauna of Romania (Fuhn 1960), only two papers updated the distribution of amphibians using the UTM 10 × 10 km grid (i.e., Cogălniceanu 1991, Cogălniceanu et al. 2000), and few up-to-date reviews are available on the distribution of single species (e.g., Sas et al. 2008, Sas 2010) or for the herpetofauna of given areas (e.g., Ghira et al. 2002, Covaciu-Marcov et al. 2006, Székely et al. 2009). Despite a significant increase in the inventory effort in Romania, mostly in the years after 2000, there is no available distribution database, nor a published atlas. Considering the needs for an updated overview of diversity and distribution of amphibians in Romania, we compiled a database with species occurrences, mapped the amphibian species occurrences in Romania, and analyzed the spatial patterns of the data.

Methods

Mapping species occurrences

We used occurrence records from four major sources: published data, museum collections, personal communications from specialists, and our own unpublished field data. The records were stored and managed in a Microsoft Access database and later imported in a GIS environment as geodatabase. For spatial representation we used the Universal Transverse Mercator (UTM) grid system which is the most frequently used cartographic framework for mapping species distributions (Franklin 2009). The occurrences were aggregated and georeferenced to the UTM 5 × 5 km grid system.

The distribution records with a spatial resolution $\leq 25 \text{ km}^2$ were georeferenced and assigned the corresponding alphanumeric UTM 5 × 5 km grid cell code. The occurrences with a spatial resolution $> 25 \text{ km}^2$ were assigned in Google Earth (Google Earth v7.0.2, Google Inc., CA) to a single grid cell, based on expert knowledge of the species' habitat requirements (Scott et al. 2002, Franklin 2009). The occurrences were classified as old, if recorded before 1990 and recent, if after 1990, based on the year of observation. If the year of observation was not mentioned in the publication, we subtracted 3 to 5 years from the date of publication.

Several records were not used for mapping species distributions when they could not be referenced to a specific locality or toponymy (e.g., distribution records assigned to mountain ranges, geographical provinces or hydrographic basins, without a finer scale reference), or unspecified taxa within a genera, while other records were doubtful or erroneous (for a detailed description of errors see Chapman 2005). A final visual check was done on maps that allowed tracking erroneous records. We identified two sources of errors: (1) author related errors (e.g., errors in identification or transcription errors), and (2) our transcription errors. Most frequent misidentification involved the hybridizing species (*Bombina bombina* and *B. variegata*, *Triturus cristatus* and *T. dobrogicus*), the brown frogs (*Rana dalmatina*, *R. temporaria* and *R. arvalis*), water frogs (*Pelophylax* kl. *esculentus*), and juveniles or larvae. Most out-of-range reports, sometimes based on a single individual, were not considered until further confirmation.

Three pairs of amphibian species hybridize in Romania: *Bombina bombina* with *B. variegata*, *Lissotriton vulgaris* with *L. montandoni*, and *Triturus cristatus* with *T. dobrogicus*. In most cases, occurrences were assigned to a hybrid based on the analysis of morphological features. The grid cells in which hybrids occurred were mapped distinctly for both parental species. The data used for mapping the hybrid zones varied in quality: while some reports refer to “hybrids” or “intergrades”, others were identified based on reports of both parental species occurring in the same grid cell. Since the large water frogs of the *Pelophylax* complex (*esculentus* and *ridibundus*) are difficult to distinguish (Pagano and Joly 1999), we decided to consider *P. lessonae* separately, while the other two taxa (*esculentus* and *ridibundus*) were mapped together (similar to Cogălniceanu and Tesio 1993). *Lissotriton vulgaris* and *L. v. ampelensis* were plotted with different symbols as the second is a taxon of European conservation interest, i.e., protected under the European Habitats Directive (92/43/EEC 1992). In all other analyses we considered them as a single taxonomic unit, i.e., *L. vulgaris*.

Spatial patterns analysis

To identify the potential bias in sampling effort, we first counted the number of amphibian records per grid cell. Then, we used Global Moran's I to assess the general trend of spatial autocorrelation in occurrences across the entire country. If the Moran's I test is statistically significant the spatial pattern of amphibian records per grid cell can be spatially clustered ($Z > 0$), dispersed ($Z < 0$) or random ($Z = 0$) (ESRI 2012). To further evaluate the local spatial association in sampling effort, we used Getis Ord G_i^* spatial statistic (Ord and Getis 1995). Thus, we identified clusters of grid cells where the sampling effort is significantly higher (i.e., hotspots of occurrences) or lower (i.e., coldspots of occurrences) than expected by random chance. We set up the distance threshold to 7100 m as to include eight neighbors of a grid cell (Getis and Ord 2010).

The mean altitude of 5×5 km grid cells was extracted from SRTM data (Jarvis et al. 2008) in order to review the altitudinal range of the species. The grid cells exceeding the Romanian boundary were excluded from the analysis.

We calculated the Extent of Occurrence (EOO) as a 100% minimum convex polygon using the state boundary as a mask, in order to remove the areas outside Romania, where no sampling was accounted. We estimated the Area of Occupancy (AOO) as the total area of 5×5 km grid cells where a species was reported (IUCN 2001).

To map species richness we aggregated the data to a spatial resolution of 50×50 km UTM grid cells. Mapping the species richness at a coarser resolution reduced the potential bias in sampling effort and allowed a better understanding and visualization of regional patterns (Graham and Hijmans 2006). To compare the individual species range size with the country area, we computed a rarity index for the same 50 km grid resolution. The index takes value between 0 (i.e., widespread species) and 100 (i.e., absent species) (Romano et al. 2012).

All spatial analyses were performed in ArcGIS Desktop 10 (ESRI, CA), with $\alpha = 0.05$.

Results

Species occurrences

In total, 26779 amphibian occurrences were compiled and stored in a geodatabase. We collected 20868 records from 201 published papers (Appendix 1). Most papers (59%) were published after 2000 (Fig. 1). We compiled further 5381 unpublished records from our own field surveys and 530 museum collection records. The majority of occurrences were dated after 1990 (89%) and only 11% represented old records collected before 1990. The detailed occurrence statistics for each species are presented in Table 1. Our database increased the average number of amphibian records per 100 km² compared with GBIF dataset (<http://data.gbif.org>, accessed 15.02.2013) from 0.123 in the GBIF dataset to 11.2 in our database (Table 2).

Spatial patterns in species occurrences

From a total of 9977 UTM 5 × 5 km grid cells covering the Romanian territory, 3013 grid cells (i.e., 30.1%) contain amphibian sightings (Fig. 2). The number of records per cell is highly skewed (skewness = 31.25). Global Moran's I test revealed a clustered pattern in the number of amphibian records per cell ($Z = 66.91$, $p < 0.001$), thus suggesting a strong bias in nationwide sampling effort. Since 73% of the country surface had

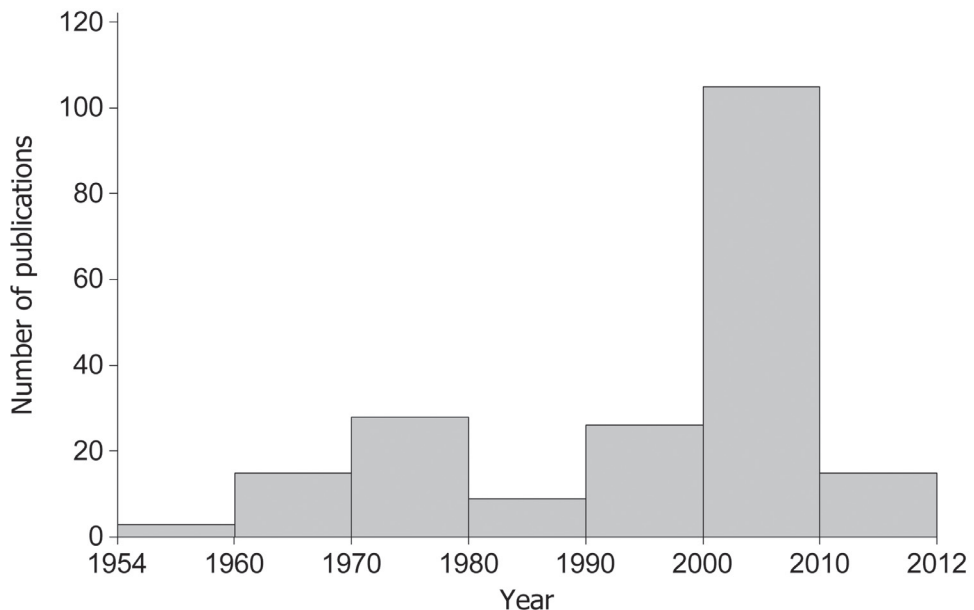


Figure 1. Number of publications containing amphibians' distribution data (1954–2012).

Table 1. The occurrences and measures of amphibian species range in Romania. Extent of Occurrence (EOO) was estimated as 100% minimum convex polygon, and Area of Occupancy (AOO) as the total area of 5 × 5 km UTM cell containing species records. Since not all grid cells matched the 25 km² area, the computed AOO is not a multiple of this value.

Species	Total number of records	New records (after 1990)	Total number of UTM5 cells	EOO (km ²)	AOO (km ²)	Rarity index
<i>Salamandra salamandra</i>	1200	1033	775	132910	29769	50.5
<i>Triturus cristatus</i>	1639	1404	436	190721	40763	31.7
<i>Triturus dobrogicus</i>	209	180	145	189130	4974	75.6
<i>Ichtyosaura alpestris</i>	768	629	962	108965	19161	59.3
<i>Lissotriton vulgaris</i>	2114	1846	1220	228999	52377	17.1
<i>Lissotriton montandoni</i>	569	429	284	56773	14163	78.9
<i>Bombina bombina</i>	1720	1569	936	235347	42033	21.9
<i>Bombina variegata</i>	3116	2811	1445	151826	77580	43.1
<i>Pelobates fuscus</i>	618	518	399	230794	14957	40.7
<i>Pelobates syriacus</i>	153	122	59	48292	3546	87.9
<i>Bufo bufo</i>	2128	1968	1291	223802	52561	24.4
<i>Bufo viridis</i>	2006	1791	1299	235801	48864	12.2
<i>Hyla arborea</i>	1801	1676	1156	233887	44265	11.4
<i>Rana dalmatina</i>	2027	1833	1270	225426	49982	25.2
<i>Rana arvalis</i>	351	270	215	88423	8638	69.1
<i>Rana temporaria</i>	1806	1614	1020	132586	44930	49.6
<i>Pelophylax lessonae</i>	203	195	108	190870	4867	73.2
<i>Pelophylax</i> kl. <i>esculentus</i>	4351	3981	1928	236441	105855	5.7
Total	26779	23869	-	-	-	-

Table 2. The bias in amphibian species occurrence data for several European countries extracted from GBIF (downloaded on January 30, 2013).

Country	GBIF records	Country area (km ²)	Average number of records per 100 km ²
Luxembourg	8119	2666.7	304.461
United Kingdom	101305	260565.6	38.878
Spain	37764	544571.2	6.934
France	24928	570427.7	4.370
Poland	6753	314347.5	2.148
Hungary	160	93374.6	0.171
Romania	293	237318.9	0.123
Ukraine	737	600856.2	0.122
Turkey	452	794961.2	0.056
Greece	61	133552.6	0.045

≤ 2 records per cell, the Getis Ord G_i^* spatial statistic did not identify the coldspots of sampling efforts as being statistically significant, at the specified threshold distance of 7100 m, but it effectively identified the hotspots of sampling effort (Fig. 3). Among

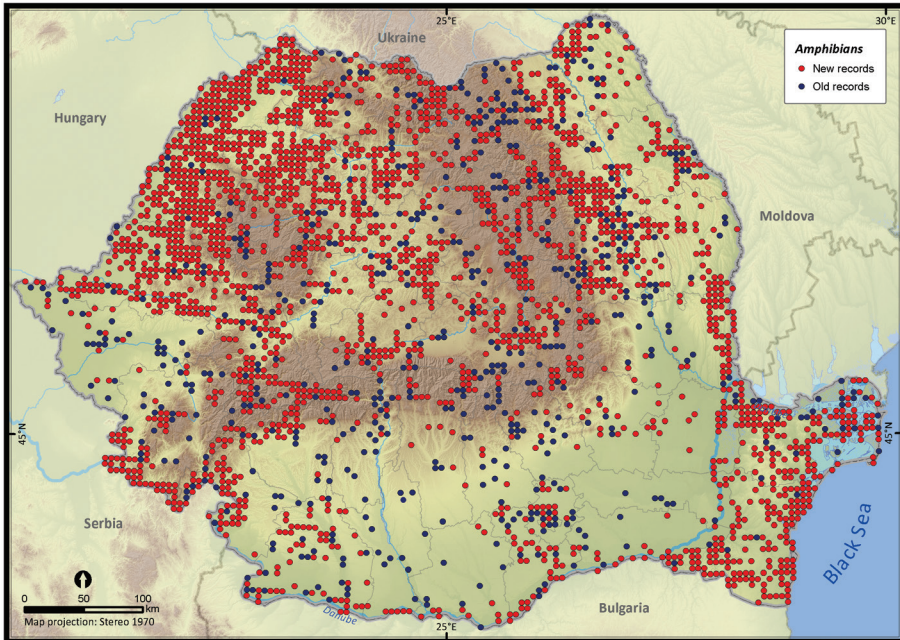


Figure 2. Amphibian occurrences in Romania. Records reported before 1990 were plotted as old records whereas those reported after 1990 were considered new records.

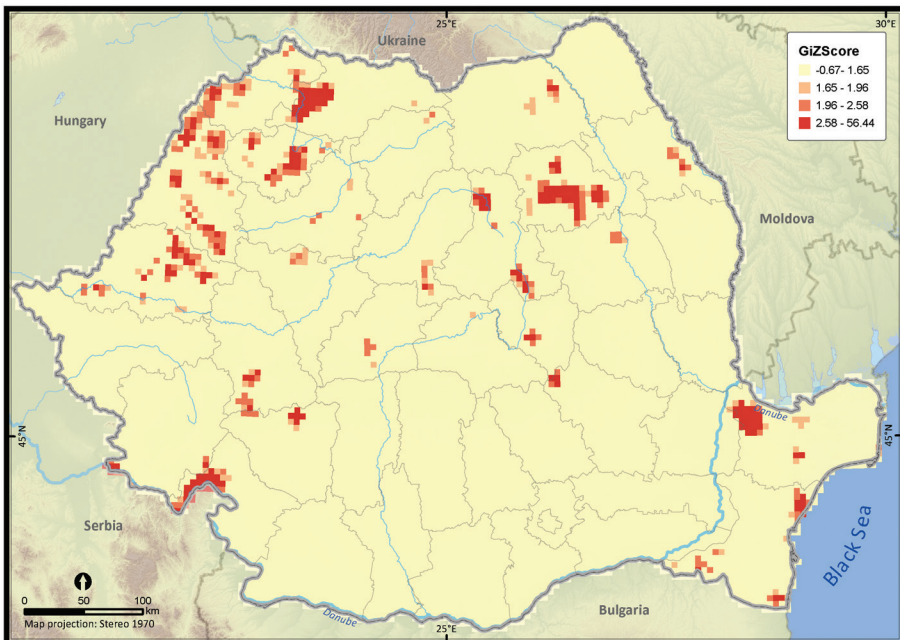


Figure 3. Hotspots of sampling efforts within Romania. The p value is < 0.05 when Z scores take values between 1.65 and 56.44, suggesting a highly clustered pattern in the number of amphibian occurrences per UTM 5×5 grid cell.

these hotspots, the Măcin Mountains National Park had the highest sampling effort (mean $Z = 24.36$). Other hotspots of sampling effort were the Jiului Gorge National Park (mean $Z = 2.47$) and the Iron Gates Natural Park (mean $Z = 1.68$). There was an obvious trend of clustering the number of records in close proximity to cities (e.g., Iași, Piatra Neamț, Oradea and Satu Mare) (see Fig. 3).

The species richness represented on the 50×50 km grid, excluding the incomplete grid cells, ranged from 3 to 16 (Fig. 4). Individual species (i.e., excluding *Pelophylax kl. esculentus*) had different distribution patterns with the Extent of Occurrence ranging from 48292 km² (*Pelobates syriacus*) to 235801 km² (*Bufo viridis*), the Area of Occupancy ranging from 3546 km² (*Pelobates syriacus*) to 77580 km² (*Bombina variegata*), and the rarity index ranging from 75.6 (*Triturus dobrogiscus*, the rarest species) to 11.4 (*Hyla arborea*, the widespread species) (see Table 1).

Taking into account the mean altitude of 5×5 km occupied grid cells, the altitudinal gradient of amphibians varied between 0 and 2007 m, with *Ichtyosaura alpestris* and *Rana temporaria* occurring over 2000 m (Fig. 5). The amphibian species occurrence maps in Romania are presented in Figs 6–23. Several species are widespread within the entire country (e.g., *Lissotriton vulgaris*, *Bufo viridis*) while others are restricted only to higher slopes (e.g., *Lissotriton montandoni*, *Ichtyosaura alpestris*, *Salamandra salamandra*), to plains (e.g., *Pelobates syriacus*) or floodplains (e.g., *Triturus dobrogiscus*).

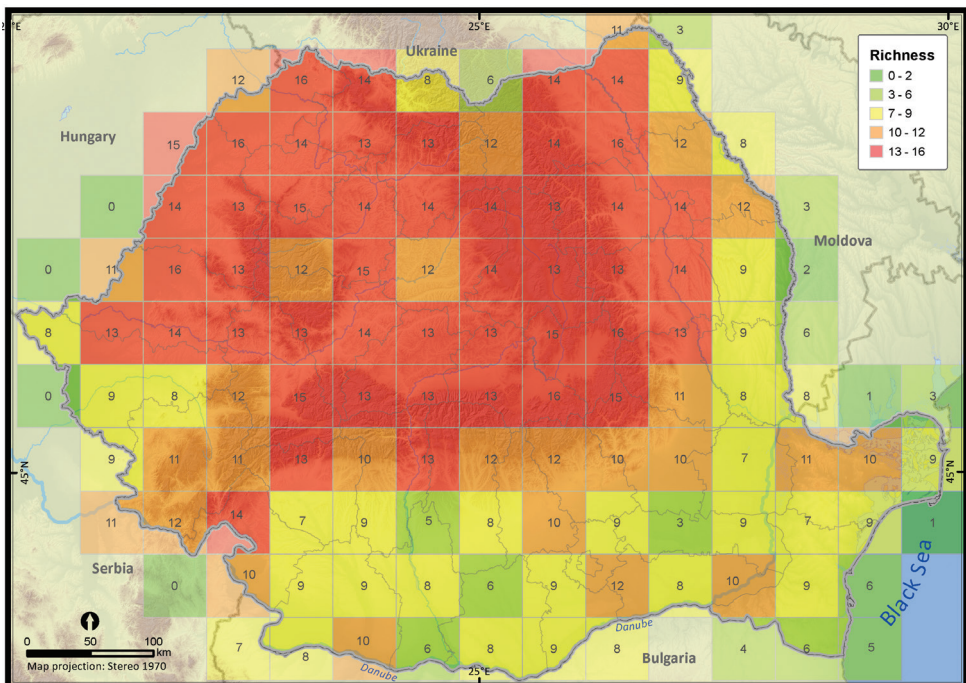


Figure 4. Amphibian species richness within Romania at a 50×50 km grid resolution.

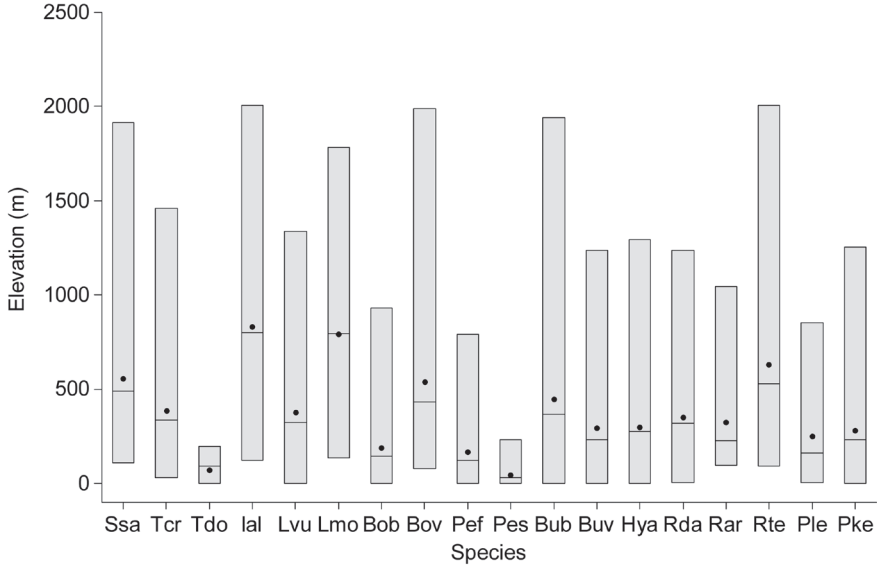


Figure 5. Altitudinal distribution of amphibian species in Romania (dot – mean, horizontal line – median, vertical bar – range, Ssa – *Salamandra salamandra*, Tcr – *Triturus cristatus*, Tdo – *Triturus dobrogicus*, Ial – *Ichtyosaura alpestris*, Lvu – *Lissotriton vulgaris*, Lmo – *Lissotriton montandoni*, Bob – *Bombina bombina*, Bov – *Bombina variegata*, Pef– *Pelobates fuscus*, Pes – *Pelobates syriacus*, Bub – *Bufo bufo*, Buv – *Bufo viridis*, Hya – *Hyla arborea*, Rda – *Rana dalmatina*, Rar – *Rana arvalis*, Rte – *Rana temporaria*, Ple – *Pelophylax lessonae*, Pke – *Pelophylax kl. esculentus*).

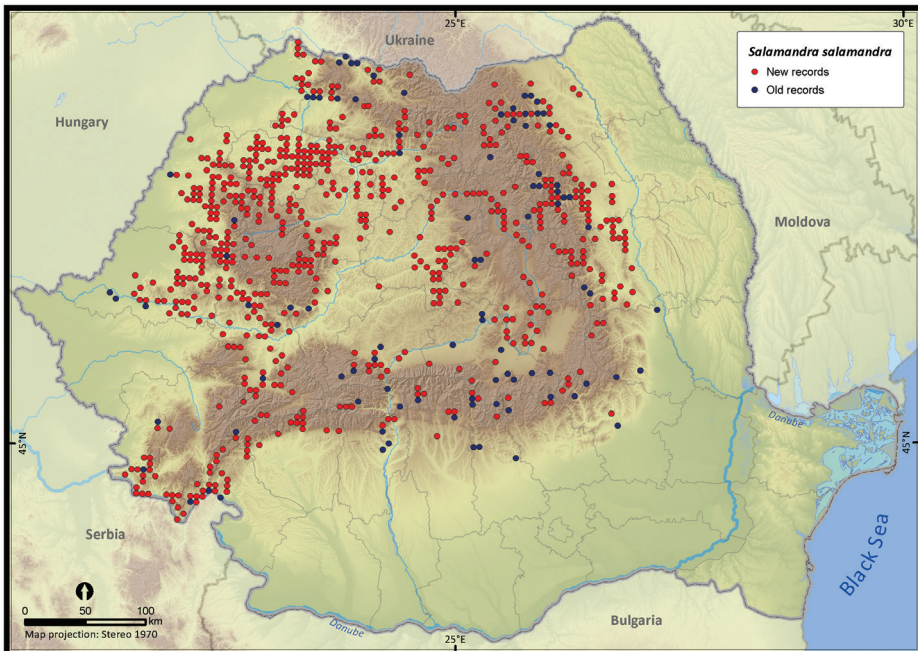


Figure 6. *Salamandra salamandra*.

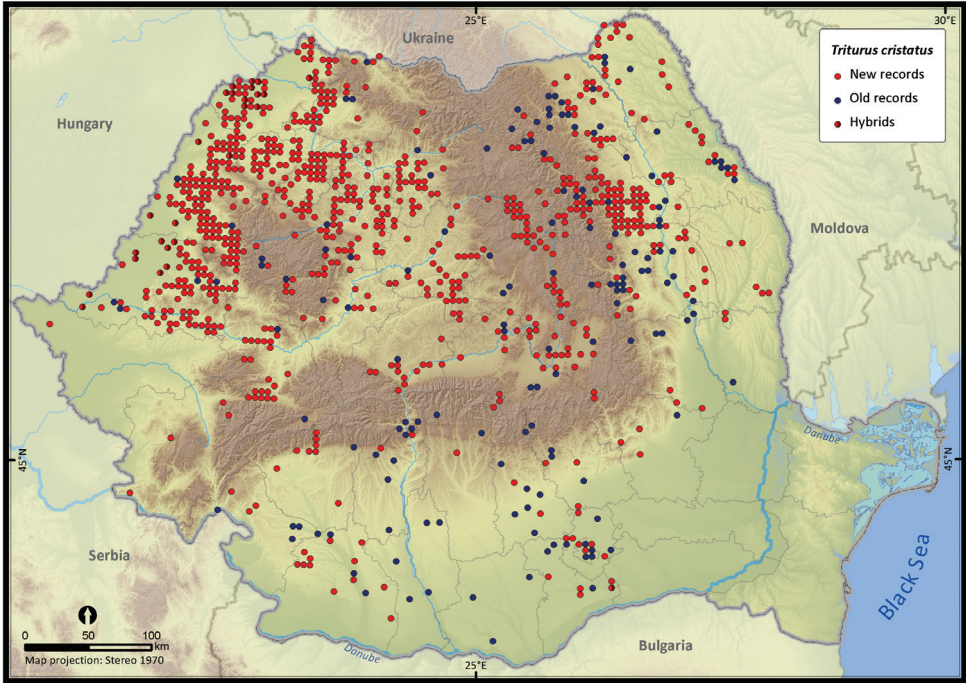


Figure 7. *Triturus cristatus*.

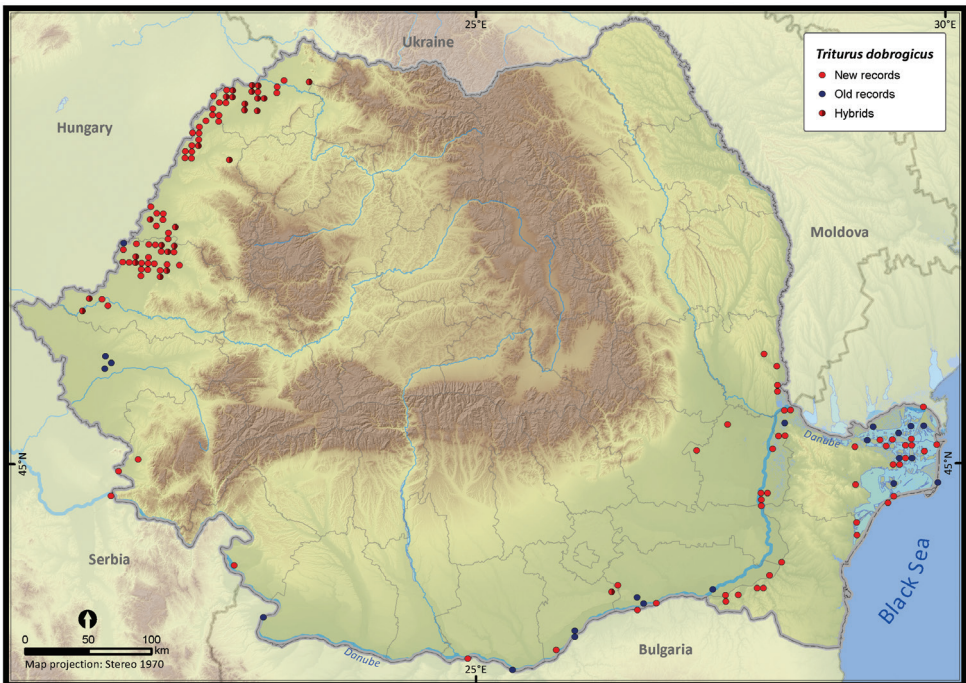


Figure 8. *Triturus dobrogicus*.

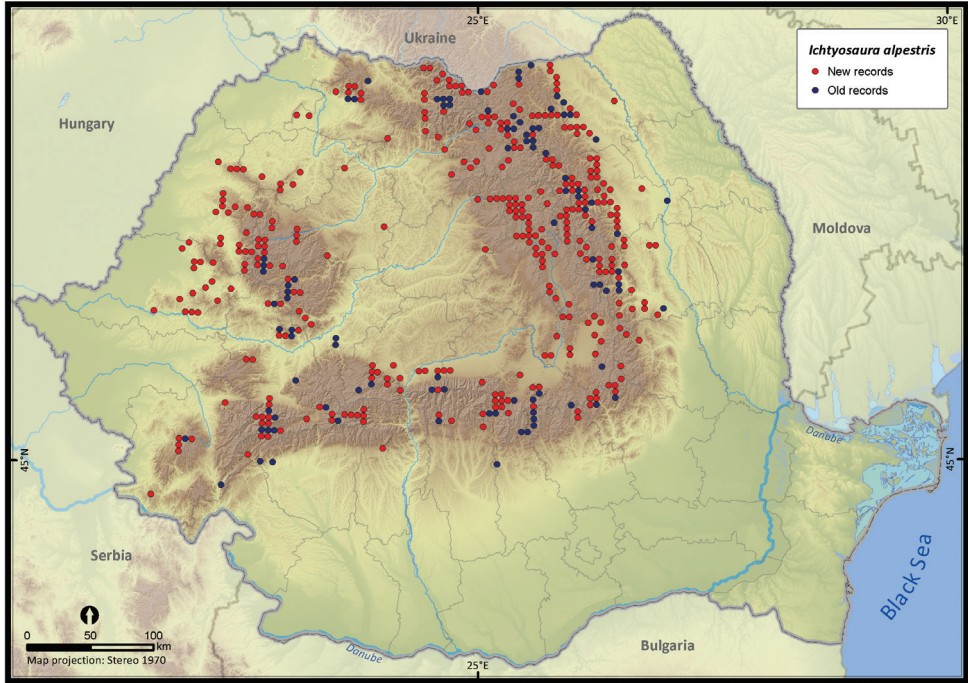


Figure 9. *Ichthyosaura alpestris*.

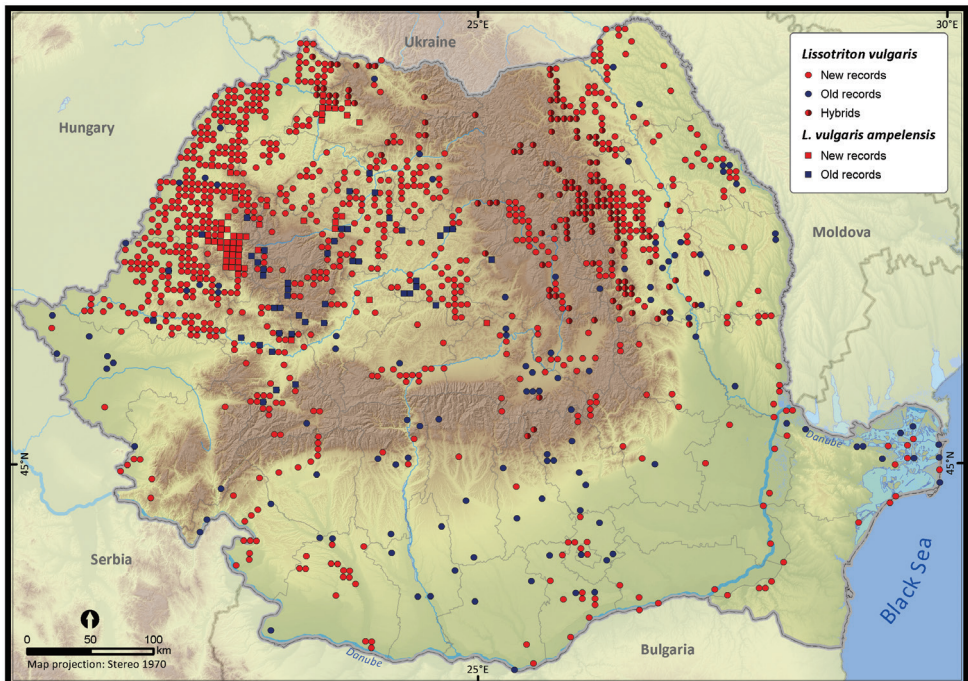


Figure 10. *Lissotriton vulgaris*.

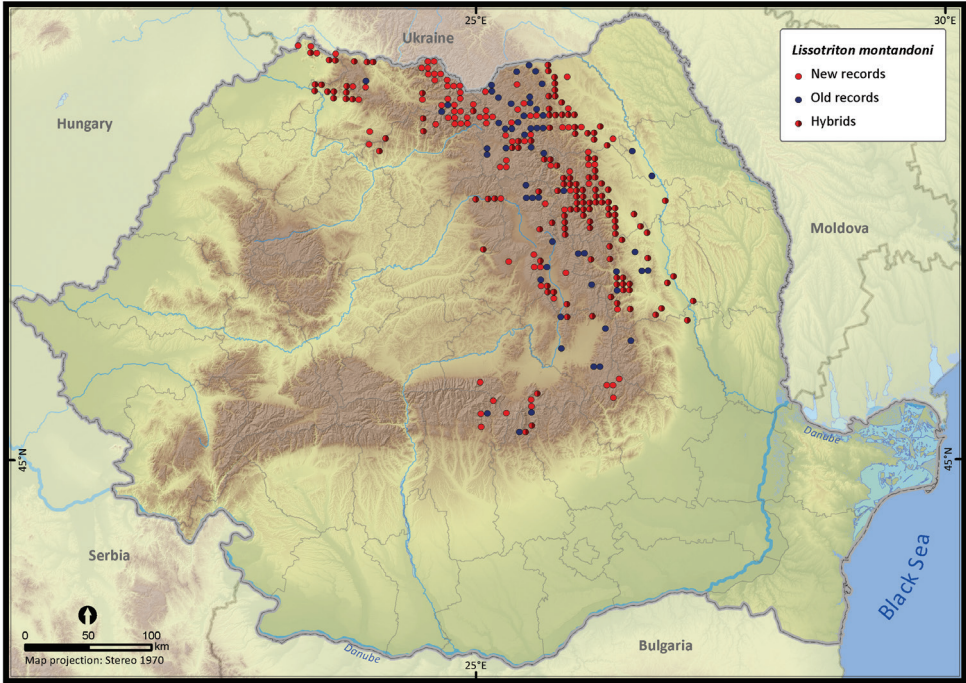


Figure 11. *Lissotriton montandoni*.

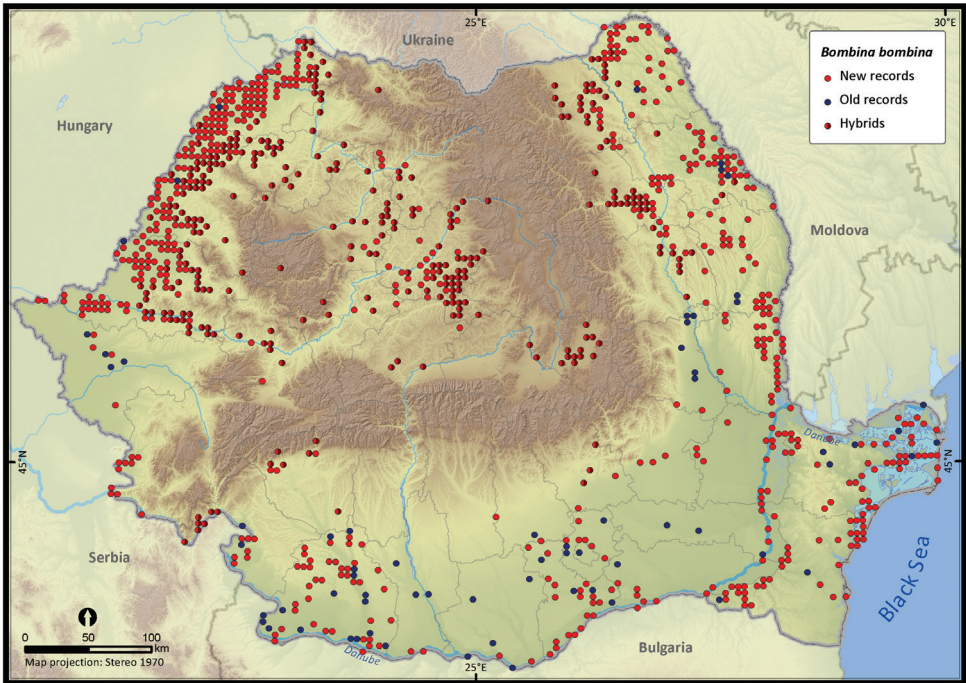


Figure 12. *Bombina bombina*.

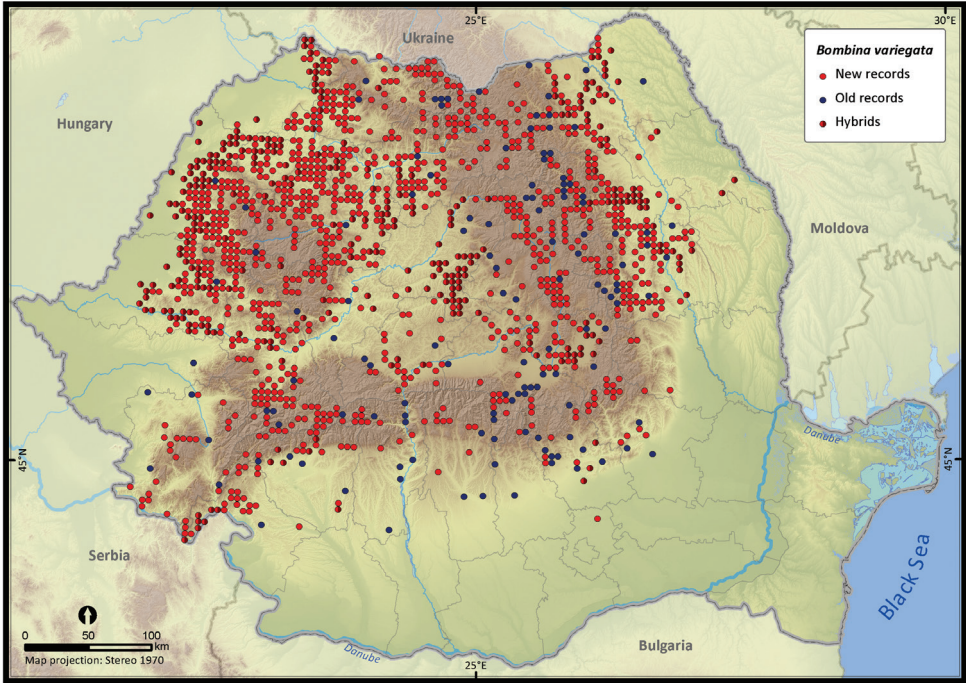


Figure 13. *Bombina variegata*.

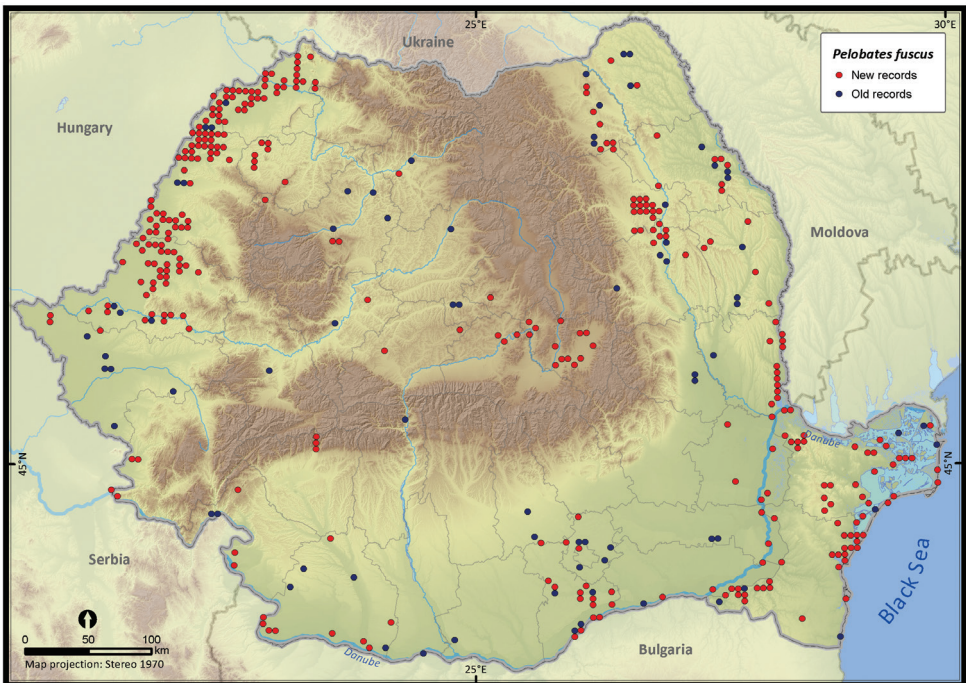


Figure 14. *Pelobates fuscus*.

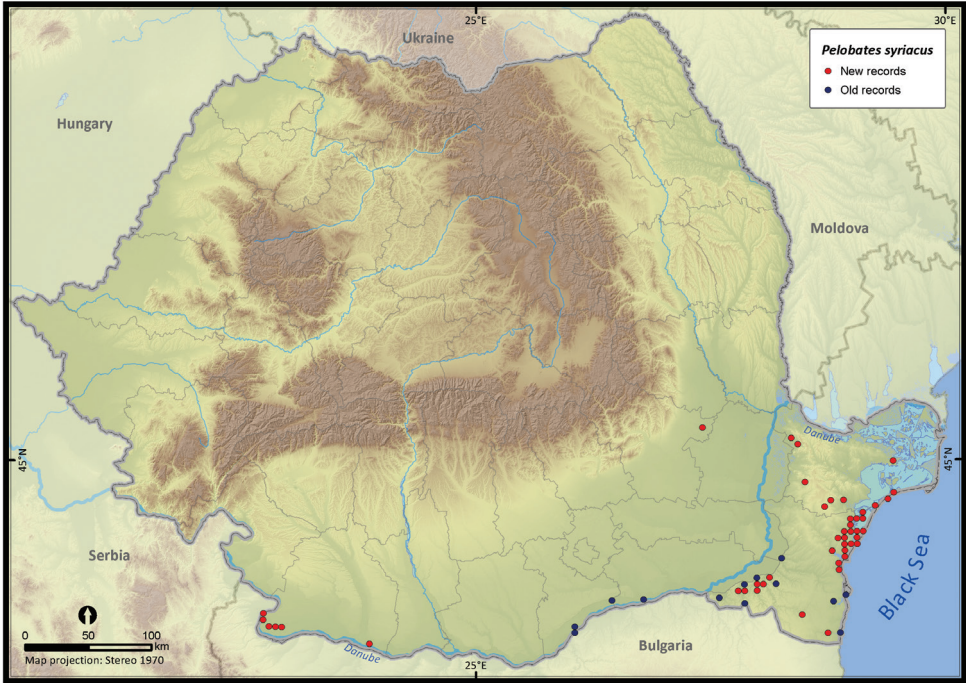


Figure 15. *Pelobates syriacus*.

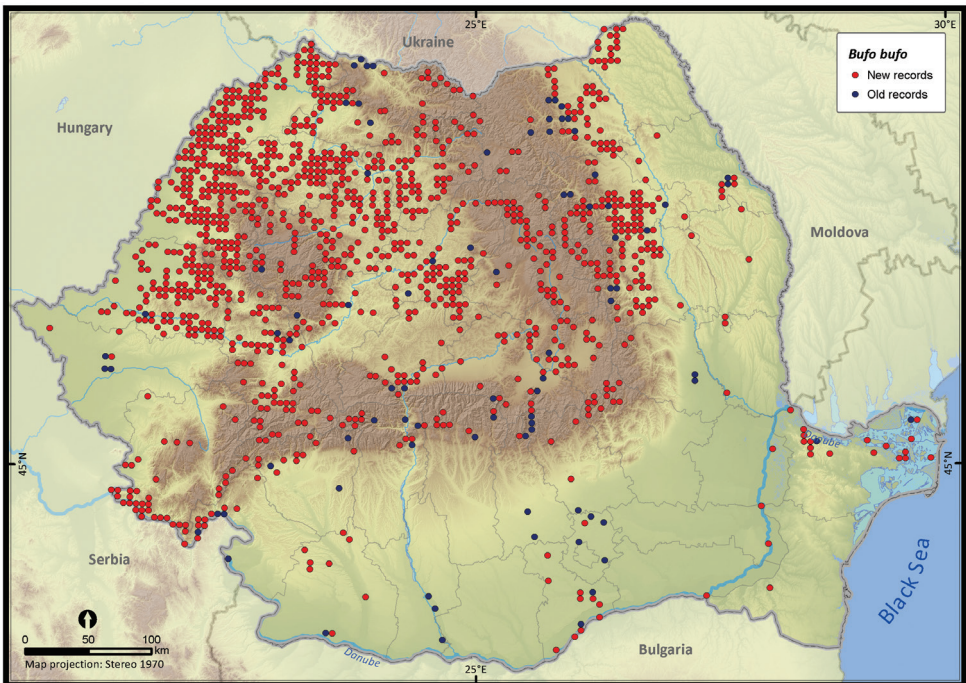


Figure 16. *Bufo bufo*.

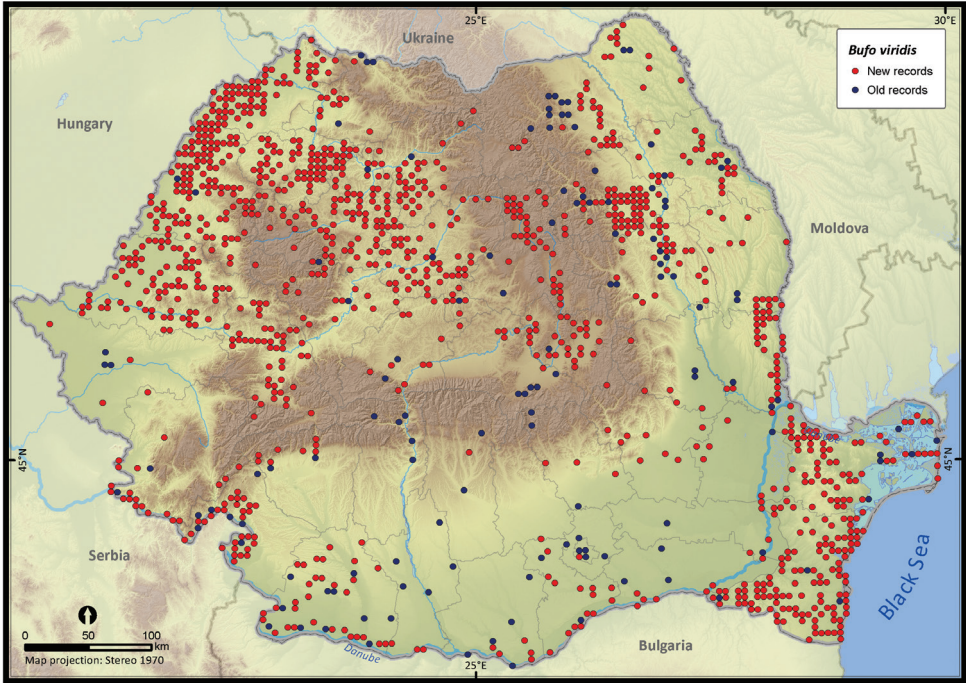


Figure 17. *Bufo viridis*.

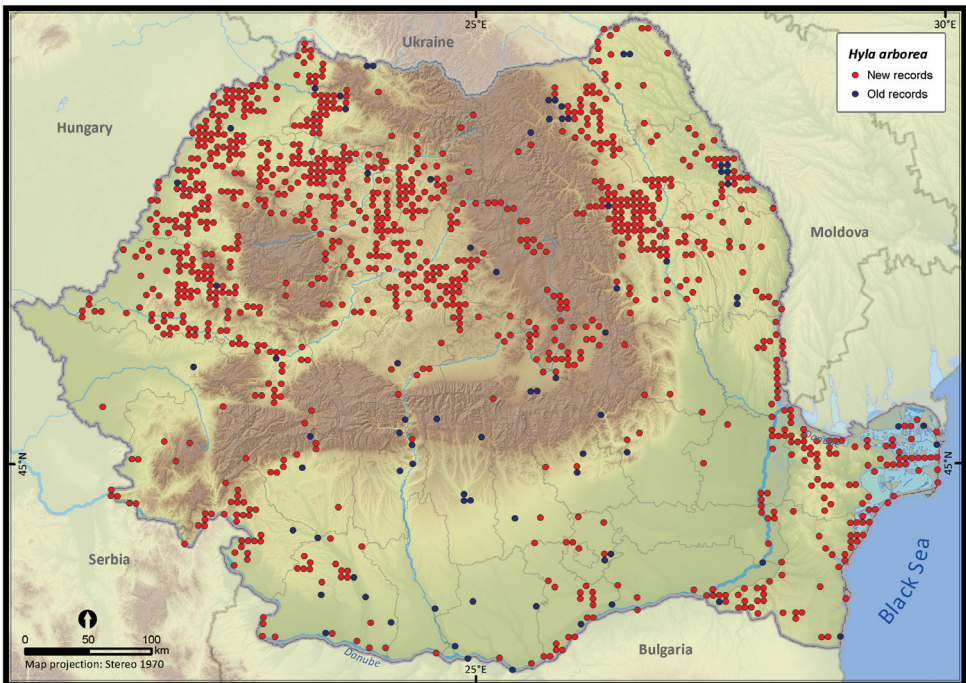


Figure 18. *Hyla arborea*.

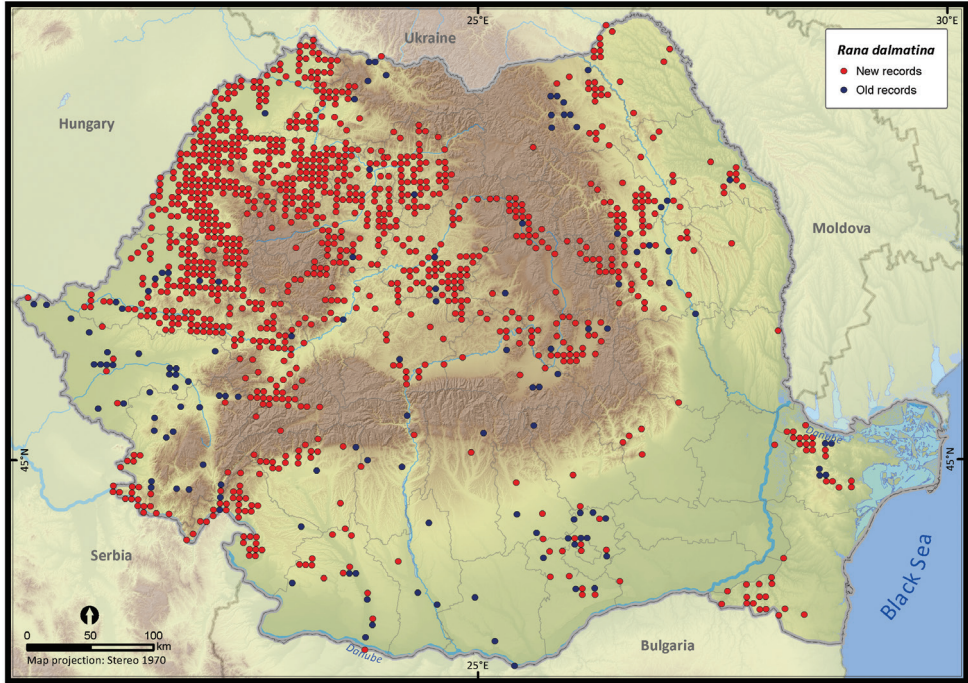


Figure 19. *Rana dalmatina*.

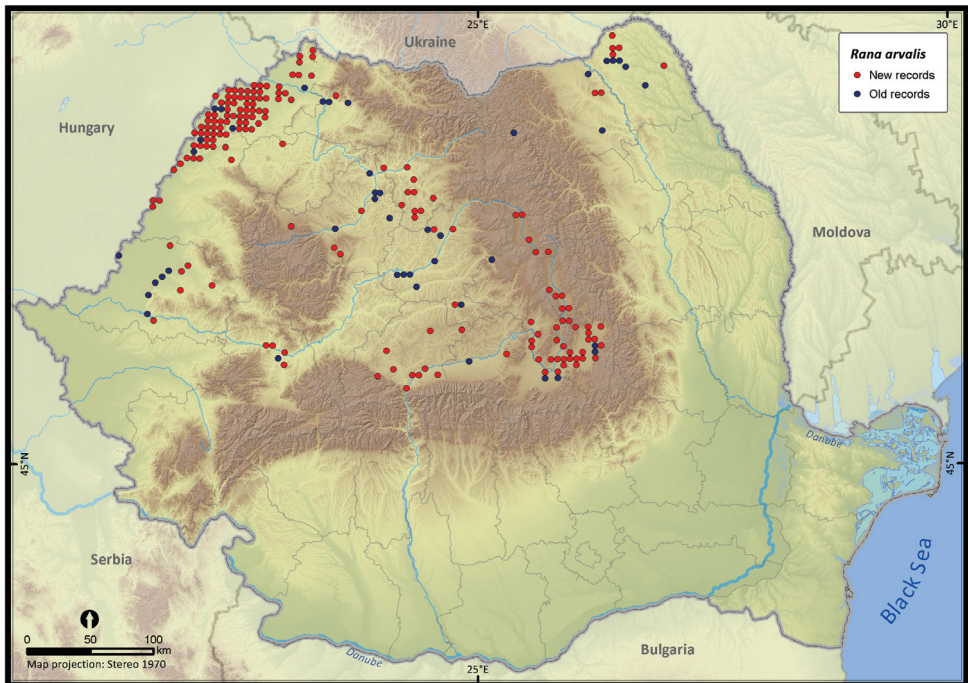


Figure 20. *Rana arvalis*.

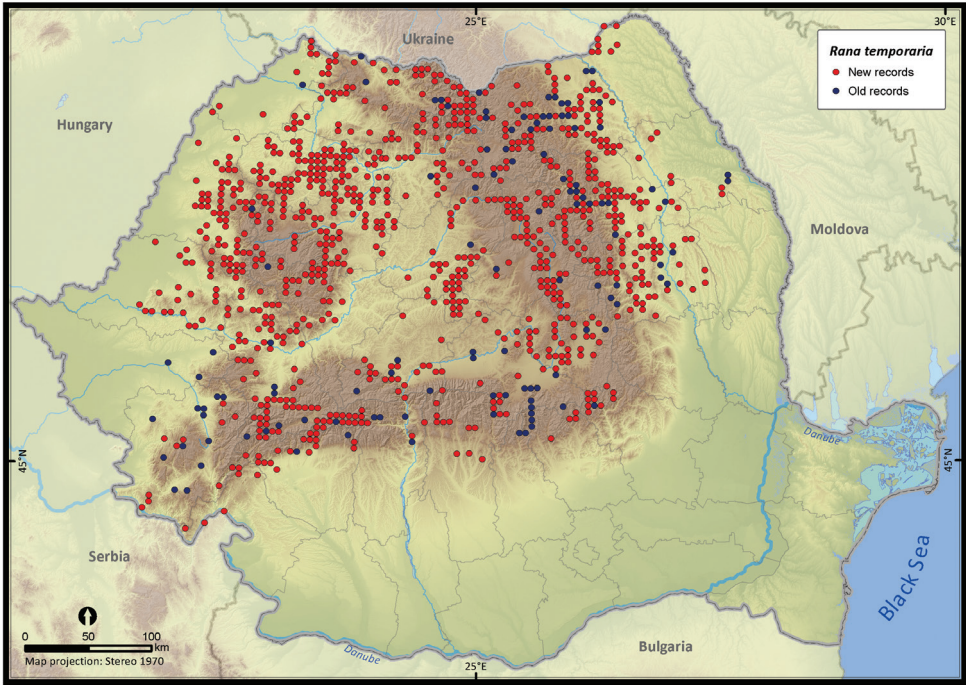


Figure 21. *Rana temporaria*.

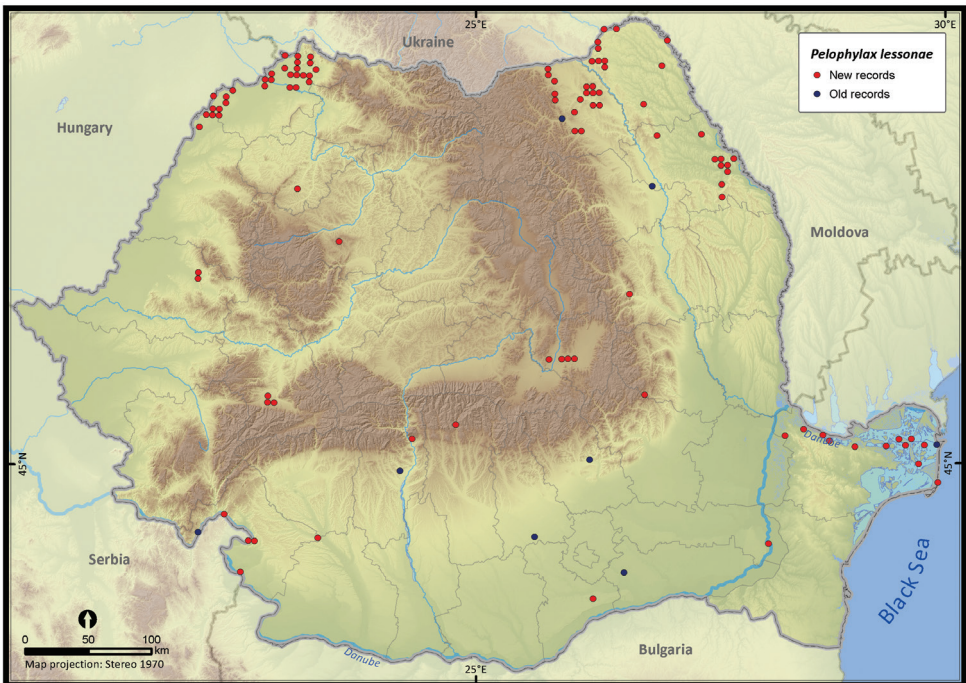


Figure 22. *Pelophylax lessonae*.

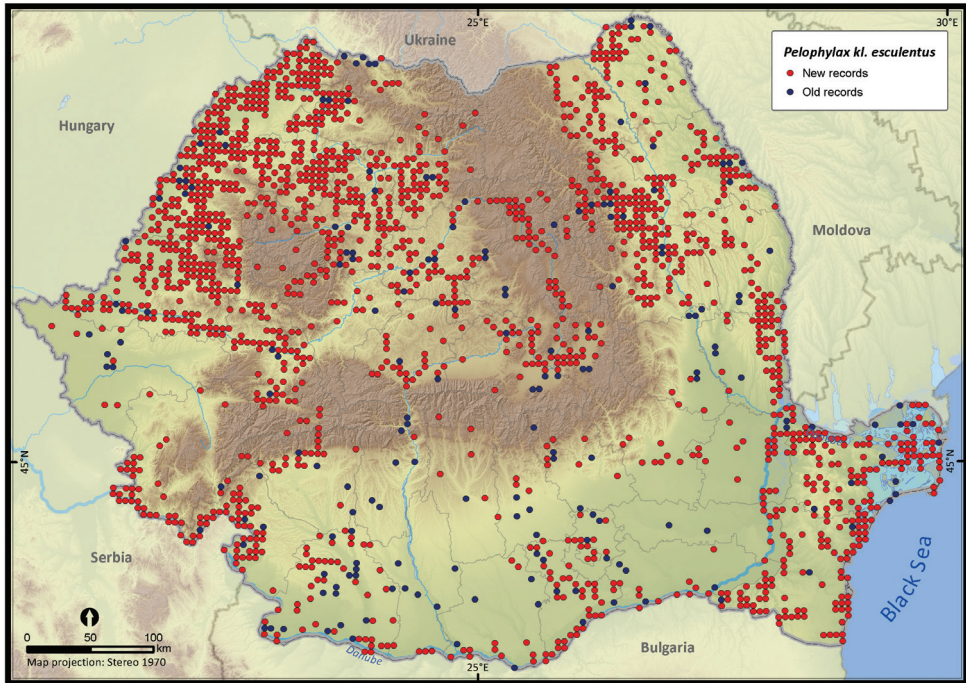


Figure 23. *Pelophylax kl. esculentus* and *ridibundus*.

Discussion

By compiling the current database of amphibian distribution in Romania, we made available comprehensive distribution maps for further analyses, and provided the first nationwide spatial statistical analysis of the amphibians' occurrence records.

The number of occurrences varies among species, the largest number of records (i.e., 16%) being that of *Pelophylax kl. esculentus*, a taxon including two species (*P. esculentus* and *P. ridibundus*). The altitudinal range of *Pelophylax kl. esculentus* varies between 0 and 1255 m. The highest number of single taxa occurrences belongs to *Bombina variegata* (i.e., 12%), a species with a broad altitudinal gradient (80–1988 m). Despite the large number of occurrences, *B. variegata* is not the most common species in Romania (rarity index = 43.1), yet it has a high detectability (i.e., easy to recognize, is active during the day and occurs mostly on the road-side temporary ponds (Hartel 2008)). The next species with more than 2000 records in our database are *Bufo bufo*, *Lissotriton vulgaris*, *Rana dalmatina*, and *Bufo viridis*, species with a wide altitudinal range, inhabiting both forests and open habitats (Cogălniceanu et al. 2000) (see Fig. 5).

The number of occurrences per species is negatively correlated with the rarity index (Spearman $\rho = -0.8$, $p < 0.001$), indicating that the range of many species is scarcely known. For some species, the large number of occurrences is not reflected in a high rarity score. However, the ranges of *Bombina variegata* and *Rana temporaria* seem to be accurate since they have a high number of occurrences, but a moderate rarity score. At

the species level, the future sampling effort should be focused mostly on species with a high rarity score in order to accurately map their range.

A general feature of a research study is that data are considered as a means to an end (i.e., publication), and are therefore treated as consumables (Michener 2000). This feature seems to affect our mapping project. We identified two major faults in our long-term nationwide sampling effort: (1) the bias in data collection, and (2) the lack of standards in publication. Since much of the occurrence data were collected opportunistically rather than systematically, large spatial biases occurred (e.g., Botts et al. 2011, Chapman 1999, Williams et al. 2002). For example, a similar study that conducted an analysis of the data quality obtained in the South African Frog Atlas Project showed a significantly higher sampling intensity near cities and roads and some protected areas (Botts et al. 2011). This geographic bias limits the applicability of an atlas for fine scale conservation planning. The results of our spatial statistic analyses supported the idea of a biased sampling within Romania, with clearly delineated hotspots of sampling effort. Our analysis showed further that the species richness is higher in those areas where the three pairs of species hybridize and lower in the agriculture-dominated plains.

The incomplete and biased species inventory in Romania may have several causes: difficult access due to low road density, complex landscape (with 15% of the territory above 800 m), limited funds available for large-scale inventory and monitoring projects, and lack of institutional support. For instance, no species distribution databases are publicly available at the Romanian Ministry of the Environment (Melinte et al. 2004).

The low quality of biodiversity datasets and the lack of standards in publication and data management limit their usefulness (Palmer and Richardson 2012). There is a growing interest in standards for taxonomic information (e.g., Taxonomic Databases Working Group 2007) and hopefully the quality of datasets will improve in the near future. The geospatial database and outputs presented in this paper as occurrence records fill a gap in our knowledge. In addition, our mapping exercise may allow future predictions of species range shifts under climate change scenarios, as well as prioritization of conservation efforts and identification of important conservation areas for amphibians.

Acknowledgements

We are grateful to the following persons for sharing their distribution data with us: Dr Arntzen Jan, Dr Bănărescu Petru, Dr Bereş Iosif, Buhaciuc Elena, Dr Gâldean Nicolae, Dr Hartel Tibor, Dr Kyek Martin, Dr Pârvulescu Lucian, Dr Oşel Vasile, Dr Skolka Marius, Sós Tibor, Talbot Neil, and Tallowin Oliver. We thank Dr Franco Andreone, Dr Antonio Romano, and an anonymous reviewer for their constructive comments on the paper. This work was supported by two grants of the Romanian National Authority for Scientific Research, CNCS-UEFISCDI, project number PN-II-RU-TE-2011-3-0183 (principal investigator Laurenţiu Rozyłowicz) and CNCS-UEFISCDI, project number PN-II-ID-PCE-2011-3-0173 (principal investigator Dan Cogălniceanu).

References

- 92/43/EEC (1992) Council Directive 92/43/EEC of 21 May 1992 on the conservation of natural habitats and of wild fauna and flora, vol 92/43/EEC. Official Journal, L 206, 22.7.1992
- Araújo MB (2004) Matching species with reserves—uncertainties from using data at different resolutions. *Biological Conservation* 118: 533–538. doi: 10.1016/j.biocon.2003.10.006
- Araújo MB, Thuiller W, Williams PH, Reginster I (2004) Downscaling European species atlas distributions to a finer resolution: implications for conservation planning. *Global Ecology and Biogeography* 14: 17–30. doi: 10.1111/j.1466-822X.2004.00128.x
- Arntzen J (2006) From descriptive to predictive distribution models: a working example with Iberian amphibians and reptiles. *Frontiers in Zoology* 3: 8. doi: 10.1186/1742-9994-3-8
- Barbault R (2011) Conserver la biodiversité: un défi enfin pris au sérieux. *Biofutur*: 35–36.
- Baselga A, Lobo JM, Svenning JC, Araújo MB (2012) Global patterns in the shape of species geographical ranges reveal range determinants. *Journal of Biogeography* 39: 760–771. doi: 10.1111/j.1365-2699.2011.02612.x
- Botts EA, Erasmus BF, Alexander GJ (2011) Geographic sampling bias in the South African Frog Atlas Project: Implications for conservation planning. *Biodiversity and Conservation* 20: 119–139. doi: 10.1007/s10531-010-9950-6
- Chapman AD (1999) Quality control and validation of point-sourced environmental resource data. In: Lowell K, Jaton A (Eds) *Spatial accuracy assessment Land information uncertainty in natural resources*. Ann Arbor Press, Chelsea, MI, 409–418.
- Chapman AD (2005) *Uses of primary species-occurrence data*. version 1.0. Report for the Global Biodiversity Information Facility, Copenhagen, 106 pp.
- Cogălniceanu D (1991) A preliminary report on the geographical distribution of amphibians in Romania. *Revue Roumaine de Biologie Serie de Biologie Animale* 36: 39–50.
- Cogălniceanu D, Aioanei F, Bogdan M (2000) *Amfibienii din România*. Determinator. Ed Ars Docendi, București, 99 pp.
- Cogălniceanu D, Tesio C (1993) On the presence of *Rana lessonae* in Romania. *Amphibia-Reptilia* 14: 90–93. doi: 10.1163/156853893X00237
- Covaciu-Marcov SD, Ghira I, Cicort-Lucaciu AS, Sas I, Strugariu A, Bogdan HV (2006) Contributions to knowledge regarding the geographical distribution of the herpetofauna of Dobruđa, Romania. *North-Western Journal of Zoology* 2: 88–125.
- Denoël M (2012) Newt decline in Western Europe: highlights from relative distribution changes within guilds. *Biodiversity and Conservation* 21: 2887–2898. doi: 10.1007/s10531-012-0343-x
- Elith J, Kearney M, Phillips S (2010) The art of modelling range shifting species. *Methods in Ecology and Evolution* 1: 330–342. doi: 10.1111/j.2041-210X.2010.00036.x
- ESRI (2012) *Spatial Autocorrelation (Morans I) (Spatial Statistics)*. <http://ednesricom/indexcfm?fa=docLibrarygateway> [accessed 15.02.2013]
- Franklin J (2009) *Mapping species distributions: spatial inference and prediction*. Cambridge University Press Cambridge, 338 pp.
- Fuhn IE (1960) *Amphibia*. Editura Academiei RPR, București, 228 pp.

- Gasc JP, Cabela A, Crnobrnja-Isailovic J, Dolmen D, Grossenbacher K, Haffner P, Lescure J, Martens H, Martínez Rica JP, Maurin H, Oliveira ME, Sofianidou TS, Veith M, Zuiderwijk A (Eds) (1997) Atlas of amphibians and reptiles in Europe. Societas Europaea Herpetologica, Muséum National d'Histoire Naturelle & Service du Patrimoine Naturel, Paris, 496 pp.
- Getis A, Ord JK (2010) The analysis of spatial association by use of distance statistics. *Geographical Analysis* 24: 189–206. doi: 10.1111/j.1538-4632.1992.tb00261.x
- Ghira I, Venczel M, Covaciu-Marcov SD, Mara G, Ghile P, Hartel T, Török Z, Farkas L, Rác T, Farkas Z, Brad T (2002) Mapping of Transylvanian herpetofauna. *Nymphaea Folia naturae Bihariae* 29: 145–201.
- Graham CH, Hijmans RJ (2006) A comparison of methods for mapping species ranges and species richness. *Global Ecology and Biogeography* 15: 578–587. doi: 10.1111/j.1466-8238.2006.00257.x
- Hartel T (2008). Movement activity in a *Bombina variegata* population from a deciduous forested landscape. *North-Western Journal of Zoology* 4: 79–90.
- Iojă CI, Pătroescu M, Rozyłowicz L, Popescu VD, Vergheteș M, Zotta MI, Felciuc M (2010) The efficacy of Romania's protected areas network in conserving biodiversity. *Biological Conservation* 143: 2468–2476. doi: 10.1016/j.biocon.2010.06.013
- IUCN (2001) IUCN Red list categories and criteria: version 3.1. <http://www.iucnredlist.org/technical-documents/categories-and-criteria/2001-categories-criteria> [accessed 15.02.2013]
- Jarvis A, Reuter HI, Nelson A., Guevara E (2008) Hole-filled SRTM for the globe Version 4, available from the CGIAR-CSI SRTM 90m Database. <http://srtm.csi.cgiar.org>
- Jones-Farrand DT, Fearer TM, Thogmartin WE, III FRT, Nelson MD, Tirpak JM (2011) Comparison of statistical and theoretical habitat models for conservation planning: the benefit of ensemble prediction. *Ecological Applications* 21: 2269–2282. doi: 10.1890/10-1047.1
- Margules CR, Pressey RL (2000) Systematic conservation planning. *Nature* 405: 243–253. doi: 10.1038/35012251
- Matin S, Chitale VS, Behera MD, Mishra B, Roy PS (2012) Fauna data integration and species distribution modelling as two major advantages of geoinformatics-based phytobiodiversity study in today's fast changing climate. *Biodiversity and Conservation* 21: 1229–1250. doi: 10.1007/s10531-012-0233-2
- Melinte I, Mladin C, Zisu D, Serban R, Vlădescu G, Blujdea V, Kleps C, Băbeanu N, Crutu G, Manoleli D, Nistor D, Cogălniceanu D, Gâldean N (2004) Thematic Assessment Reports for the Implementation of the UN Conventions for Climate Change, for Biodiversity Conservation and to Combat Desertification. UNDP/GEF, Bucharest, 75 pp.
- Michener WK (2000) Research design: translating ideas to data. In: Michener WK, Brunt JW (Eds) *Ecological data: Design, management and processing*. Blackwell Science, Oxford, 1–24.
- Ord JK, Getis A (1995) Local spatial autocorrelation statistics: distributional issues and an application. *Geographical analysis* 27: 286–306. doi: 10.1111/j.1538-4632.1995.tb00912.x
- Pagano A, Joly P (1999) Limits of the morphometric method for field identification of water frogs. *Alytes* 16: 130–138.
- Palmer MW, Richardson JC (2012) Biodiversity Data in the Information Age: Do 21st Century Floras Make the Grade? *Castanea* 77: 46–59. doi: 10.2179/11-035

- Popescu VD, Gibbs JB (2009) Interactions between climate, beaver activity, and pond occupancy of the cold-adapted mink frog in New York State, USA. *Biological Conservation* 142: 2059–2068. doi: 10.1016/j.biocon.2009.04.001
- Primack RB (2010) *Essentials of conservation biology*, 5th edition. Sinauer Associates Sunderland, 538 pp.
- Reese GC, Wilson KR, Hoeting JA, Flather CH (2005) Factors affecting species distribution predictions: a simulation modeling experiment. *Ecological Applications* 15: 554–564. doi: 10.1890/03-5374
- Romano A, Bartolomei R, Conte AL, Fulco E (2012). Amphibians in Southern Apennine: distribution, ecology and conservation notes in the “Appennino Lucano, Val d’Agri e Lagonegrese” National Park (Southern Italy). *Acta Herpetologica* 7: 203–219.
- Sas I, Covaciu-Marcov SD, Demeter L, Cicort-Lucaciu AS, Strugariu A (2008) Distribution and status of the moor frog (*Rana arvalis*) in Romania. *Zeitschrift für Feldherpetologie* 13: 337–354.
- Sas I (2010) The *Pelophylax esculentus* complex in North-Western Romania: distribution of the population systems. *North-Western Journal of Zoology* 6: 294–308.
- Scott JM, Heglund P J, Morrison ML et al. (2002). *Predicting species occurrences: issues of scale and accuracy*. Island Press. Washington DC, 840 pp.
- Sillero N, Celaya L, Martin-Alfageme S (2005) Using Geographical Information System (GIS) to make an atlas: a proposal to collect, store, map and analyse chorological data for herpetofauna. *Revista Española de Herpetología* 19: 87–101.
- Stork NE, Samway MJ, Eeley HA (1996) Inventorying and monitoring biodiversity. *Trends in Ecology & Evolution* 11: 39–40. doi: 10.1016/0169-5347(96)81070-6
- Székely P, Plaiiașu R, Tudor M, Cogălniceanu D (2009) The distribution and conservation status of amphibians in Dobrudja (Romania). *Turkish Journal of Zoology* 33: 147–156.
- Taxonomic Databases Working Group (2007) Darwin Core. *Biodiversity Information Standards*. <http://www.tdwg.org/> [accessed 15.02.2013]
- Williams P, Humphries C, Araújo M, Lampinen R, Hagemeyer W, Gasc J, Mitchell-Jones T (2000) Endemism and important areas for representing European biodiversity: a preliminary exploration of atlas data for plants and terrestrial vertebrates. *Belgian Journal of Entomology* 2: 21–46.
- Williams P, Margules C, Hilbert D (2002) Data requirements and data sources for biodiversity priority area selection. *Journal of Biosciences* 27: 327–338. doi: 10.1007/BF02704963

Appendix

Publications used to compile distribution of amphibian species native to Romania. (doi: 10.3897/zookeys.296.4872.app) File format: Microsoft Word document (doc).

Copyright notice: This dataset is made available under the Open Database License (<http://opendatacommons.org/licenses/odbl/1.0/>). The Open Database License (ODbL) is a license agreement intended to allow users to freely share, modify, and use this Dataset while maintaining this same freedom for others, provided that the original source and author(s) are credited.

Citation: Cogălniceanu D, Székely P, Samoilă C, Iosif R, Tudor M, Plăiașu R, Stănescu F, Rozyłowicz L (2013) Diversity and distribution of amphibians in Romania. *ZooKeys* 296: 35–57. doi: 10.3897/zookeys.296.4872.app
